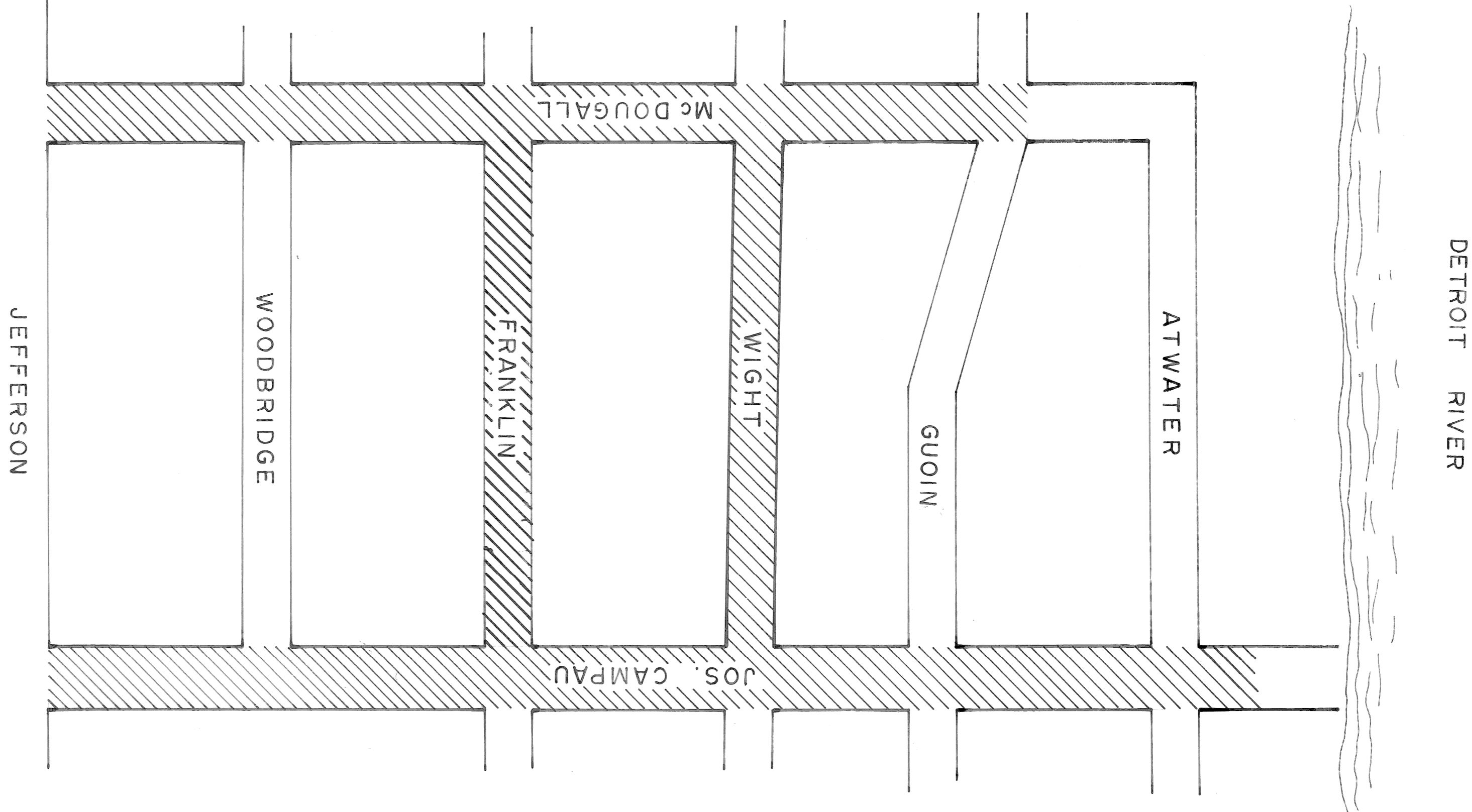


**CITY OF DETROIT
 COLEMAN A. YOUNG - MAYOR
 CITY ENGINEERING DEPARTMENT**

PLANS FOR PROPOSED
 RESURFACING AND MISCELLANEOUS
 CONSTRUCTION
 JOS. CAMPAU, McDUGALL, WIGHT, AND FRANKLIN ST.
 RIVER PLACE DEVELOPMENT



INDEX OF SHEETS

1	TITLE SHEET
2	QUANTITY AND SECTION SHEET
3-4	UTILITY PLAN
5-6	REMOVAL PLAN
7	INTERSECTION REMOVAL PLAN
8-11a	PAVING PLAN
12-13	INTERSECTION CONSTRUCTION PLAN
14-27	P.L.D. ALTERATIONS

PROJECT: RESURFACING AND MISCELLANEOUS CONSTRUCTION JOS. CAMPAU, McDUGALL, WIGHT, AND FRANKLIN ST. RIVER PLACE DEVELOPMENT
CONTRACT NO. PW 6727

**PLANS PREPARED BY
 CITY ENGINEERING DEPARTMENT**

RECOMMENDED FOR APPROVAL	ENGINEER OF INSPECTION	DATE
RECOMMENDED FOR APPROVAL	ENGINEER OF STREETS	DATE
APPROVED	ASSISTANT CITY ENGINEER	DATE
APPROVED	DEPUTY DIRECTOR	DATE

DATE 6-22-87

DRWG. NO. 1 OF 27

JOS. CAMPAU

QUANTITY SHEET

ITEM NO.	DESCRIPTION	UNIT	JOS CAMPANU	MCDUGALL	WIGHT	FRANKLIN	TOTAL
1	EXCAVATION	Cyds	50	100	100	50	300
2	FILL (GRADE 'A')	Cyds	128	121	390	50	689
3	SIDEWALK REMOVAL	SFT	24490	17281	1758	7825	51354
4	DRIVEWAY REMOVAL	SFT	3875	816	220	1367	6278
5	STREET PAVT. REMOVAL-UNREINFORCED	Syds	550	380	407		1287
6	SEPARATE TYPE CURB REMOVAL	LFT			100		100
7	RAILROAD TRACK REMOVAL	LFT	280				280
8	RAILROAD TRACK BASE REMOVAL	Syds	125				125
9	TREE REMOVAL 18"-24" DIA.	EACH	1	2			3
10	STUMP REMOVAL	EACH	1				1
11	STRIPPING	Syds	41	34			75
12	STRIP AND ADJUST ASPHALT SURFACE	Syds	25	58			83
13	REMOVING BITUMINOUS SURFACE	Syds	5730	3182	1160	1458	11530
14	REMOVE EXISTING CONCRETE BASE	Syds					50
15	REPLACE CONCRETE BASE WITH GRADE 'A' CONCRETE	Syds					50
16	RESETTING CATCH BASINS-ALL TYPES	EACH	9	10			21
17	RESETTING MANHOLES	EACH	23	37	2		64
18	RESETTING STOP BOXES	EACH	1	4	1	3	9
19	BUILDING CATCH BASINS	EACH					1
20	SEMI-REBUILD CATCH BASIN	EACH					1
21	BITUMINOUS BOND COAT	GAL	964	784	220	227	2195
22	SHEET ASPHALT WEARING SURFACE MIXT.	TON	10	5			25
23	SIDEWALKS-4" STANDARD **	SFT	27600	17991	7530	8776	61897
24	SIDEWALKS-6" STANDARD **	SFT	2497	2051	168	527	5243
25	DRIVEWAY-8" STANDARD	SFT	3875	2069	478	6422	6422
26	SEPARATE TYPE CURB REPL-NONREINF.	LFT	2344	1711	1000	942	5997
27	9" UNIF. CONCRETE BASE PAVEMENT	Syds	550	319	40		909
28	PAVEMENT-9" UNIFORM CONCRETE	Syds	125				125
29	BRICK PAVERS	SFT	2993	1773			4766
30	CATCH BASIN ABANDONMENT	EACH	4	4			4
31	CATCH BASIN 18"x12" SPECIAL "Y"	EACH	4	4			4
32	SEWERS 12" PIPE C-76-III	LFT	20	20			20
33	MANHOLE ADJUSTMENT	EACH	13	8			23
34	STOP BOX ADJUSTMENT	EACH	6	11			17
35	JOINT SAWING	LFT	820	492	1100	100	2512
36	CLEANING EXISTING SURFACE	Syds	597	545	300		1442
37	CONDITION EXISTING SURFACE	Syds	199	182	25		406
38	MANHOLE RECONSTRUCT CONE	EACH	1	1			2
39	CLEANING STRUCTURES	EACH	1	1			2
40	SODDING	Syds	15	15			15
41	TOP SOIL	Cyds		5			5
42	MAINTAINING TRAFFIC	Lump Sum					
43	WEARING SURFACE MIXTURE	Lump Sum					
44	(BINDER COURSE MIXTURE)	TONS	325	196	75	76	672
	a) 25A(MOD)-SLAG-1" AVE THICKNESS	TONS	325	196	75	76	672
	b) 25A(MOD)-NATURAL 1" AVE THICKNESS	TONS	354	214	79	83	730
	c) 1100T, 20A*-1 1/2" AVE THICKNESS	TONS	531	321	119	125	1096
	a) 31A(CD)-SLAG-1" AVE THICKNESS	TONS	334	202	77	78	694
	b) 31A(CD)-NATURAL-1" AVE THICKNESS	TONS	354	214	79	83	730
	c) 1100T, 20A*-1 1/2" AVE THICKNESS	TONS	531	321	119	125	1096
	PLD ALTERATIONS FOR QUANTITIES SEE SHEET *16						

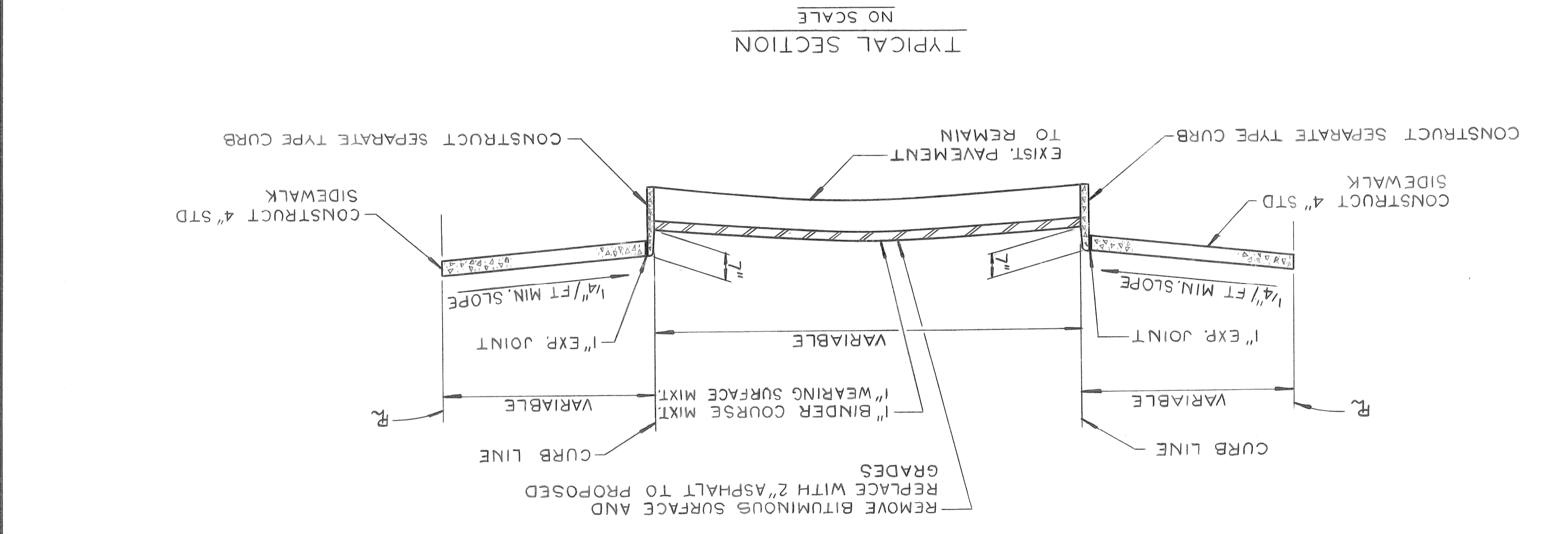
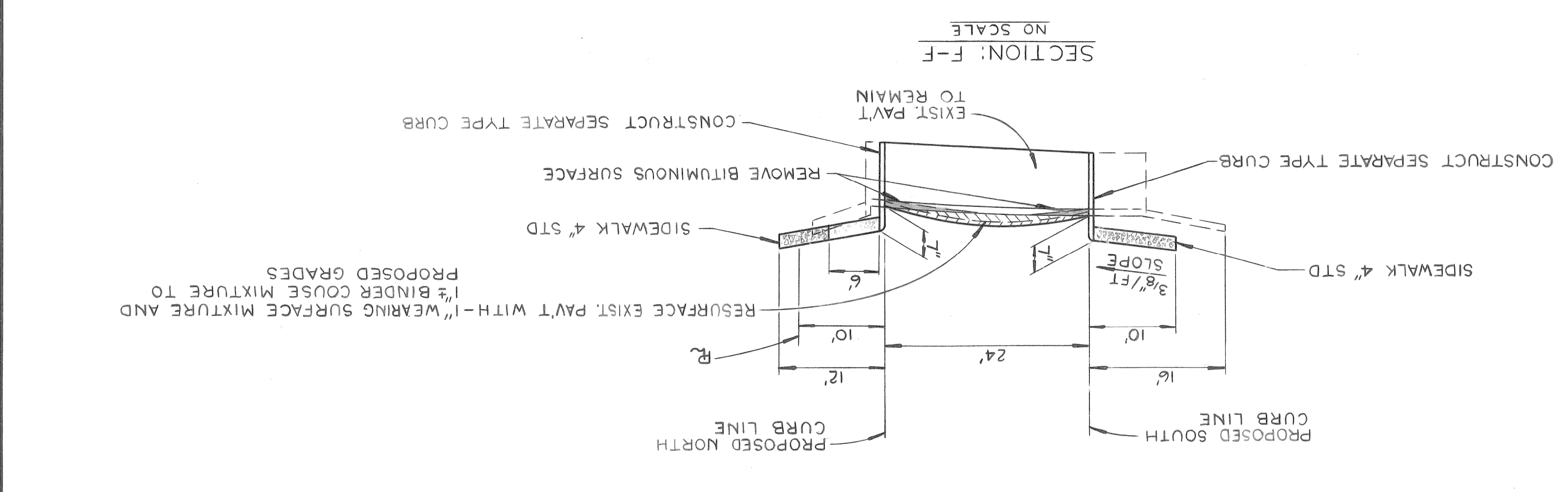
* In accordance with Michigan Department of Transportation 1984 Standard Specification for Construction
* * Construction Only

REVISIONS LOCATED BY COORDINATES ON SHEET	NO.	DATE	DESCRIPTION

APPROVED: *J.C.M.*
ENGINEER OF STREETS

CITY OF DETROIT
CITY ENGINEERING DEPARTMENT
BUREAU OF STREETS AND HIGHWAYS
FOR

RESURFACING AND MISCELLANEOUS CONSTRUCTION
JOS. CAMPANU, MCDUGALL, WIGHT, AND FRANKLIN ST.
RIVER PLACE DEVELOPMENT
QUANTITY AND SECTION SHEET
DATE 6-22-87
SHEET 2 OF 27 SHEETS
CONTRACT NO. PW 6727
ASSIGNMENT NO. 84-14-20



0
1
2
3
4
5
6
7
8
9
10
11

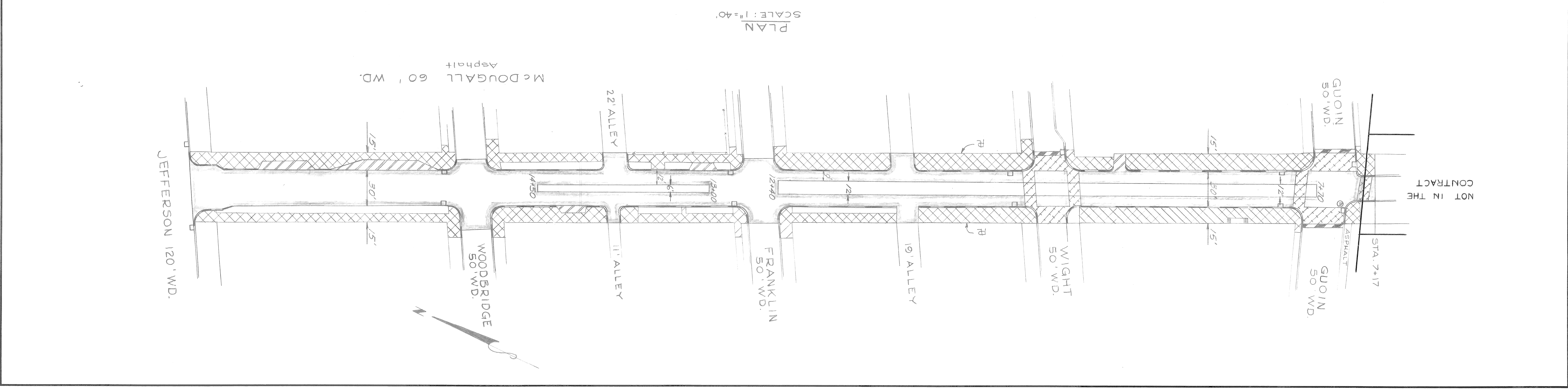
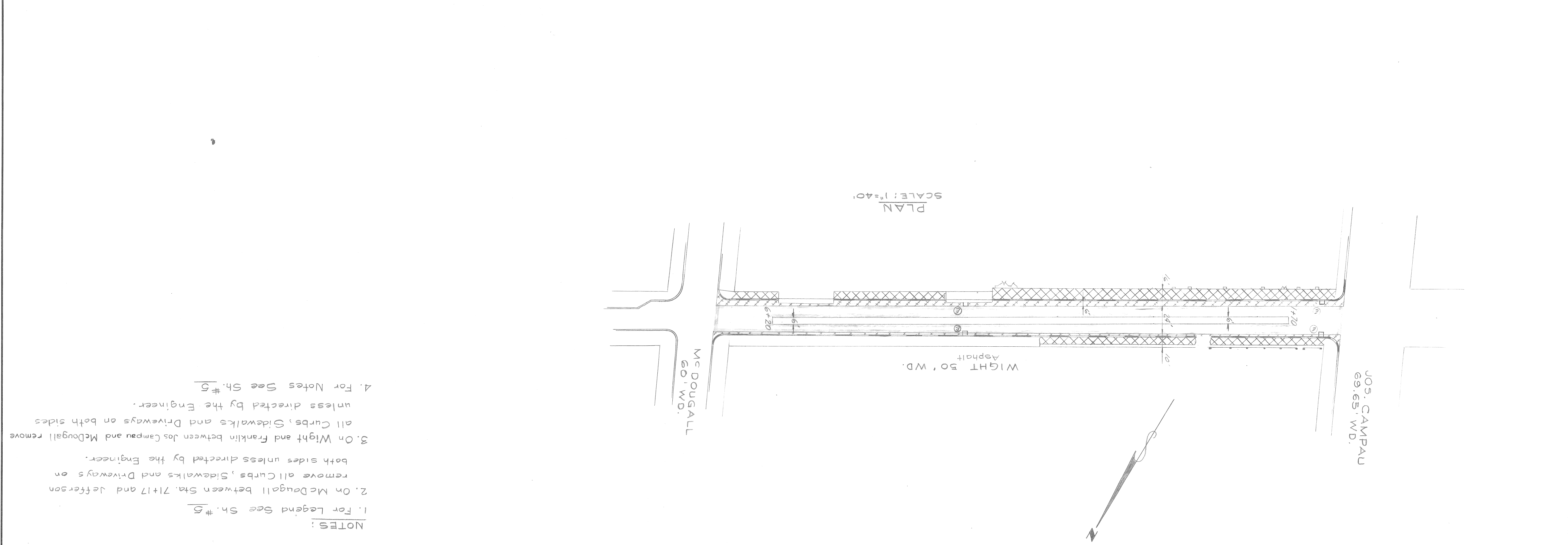
REVISIONS LOCATED BY COORDINATES ON SHEET	1	2	3	4	5	6	7	8	9	10	11
DESCRIPTION											
DATE											
BY											
DATE											
BY											
DATE											
BY											
DATE											
BY											
DATE											
BY											
DATE											
BY											
DATE											
BY											
DATE											
BY											
DATE											
BY											
DATE											
BY											
DATE											
BY											
DATE											
BY											
DATE											
BY											
DATE											
BY											
DATE											
BY											
DATE											
BY											
DATE											
BY											
DATE											
BY											
DATE											
BY											
DATE											
BY											
DATE											
BY											
DATE											
BY											
DATE											
BY											
DATE											
BY											
DATE											
BY											
DATE											
BY											
DATE											
BY											
DATE											
BY											
DATE											
BY											
DATE											
BY											
DATE											
BY											
DATE											
BY											
DATE											
BY											
DATE											
BY											
DATE											
BY											
DATE											
BY											
DATE											
BY											
DATE											
BY											
DATE											
BY											
DATE											
BY											
DATE											
BY											
DATE											
BY											
DATE											
BY											
DATE											
BY											
DATE											
BY											
DATE											
BY											
DATE											
BY											
DATE											
BY											
DATE											
BY											
DATE											
BY											
DATE											
BY											
DATE											
BY											
DATE											
BY											
DATE											
BY											
DATE											
BY											
DATE											
BY											
DATE											
BY											
DATE											
BY											
DATE											
BY											
DATE											
BY											
DATE											
BY											
DATE											
BY											
DATE											
BY											
DATE											
BY											
DATE											
BY											
DATE											
BY											
DATE											
BY											
DATE											
BY											
DATE											
BY											
DATE											
BY											
DATE											
BY											
DATE											
BY											
DATE											
BY											
DATE											
BY											
DATE											
BY											
DATE											
BY											
DATE											
BY											
DATE											
BY											
DATE											
BY											
DATE											
BY											
DATE											
BY											
DATE											
BY											
DATE											
BY											
DATE											
BY											
DATE											
BY											
DATE											
BY											
DATE											
BY											
DATE											
BY											
DATE					</						

REVISIONS LOCATED BY COORDINATES ON SHEET		3	08.11	CHECKED BY	
COORD.	DESCRIPTION	DATE		TRACED BY	
				DRAWN BY	J. NIX
				DESIGNED BY	B. E. U.
				APPROVED:	M. O. M.
					ENGINEER OF STREETS

CITY OF DETROIT
CITY ENGINEERING DEPARTMENT
FOR
BUREAUS OF STREETS AND HIGHWAYS

RESURFACING AND MISCELLANEOUS CONSTRUCTION
JOS. CAMPAU, McDUGALL, WIGHT, AND FRANKLIN ST.
RIVER PLACE DEVELOPMENT
REMOVAL PLAN

SHEET 6 OF 27 SHEETS
CONTRACT PW 6127
ASSIGNMENT NO. 84-14-20
DATE 6-22-87



NOTES:
1. For Legend See Sh. #5
2. On McDougall between Sta. 71+17 and Jefferson remove all Curbs, Sidewalks and Driveways on both sides unless directed by the Engineer.
3. On Wight and Franklin between Jos Campau and McDougall remove all Curbs, Sidewalks and Driveways on both sides unless directed by the Engineer.
4. For Notes See Sh. #5

NOT IN THE CONTRACT

JOS. CAMPAU
69.65' WD.

Mc DUGALL
60' WD.

WIGHT 50' WD.
Asphalt

PLAN
SCALE: 1"=40'

Mc DUGALL 60' WD.
Asphalt

JEFFERSON 120' WD.

WOODBIDGE
50' WD.

11' ALLEY

FRANKLIN
50' WD.

19' ALLEY

WIGHT
50' WD.

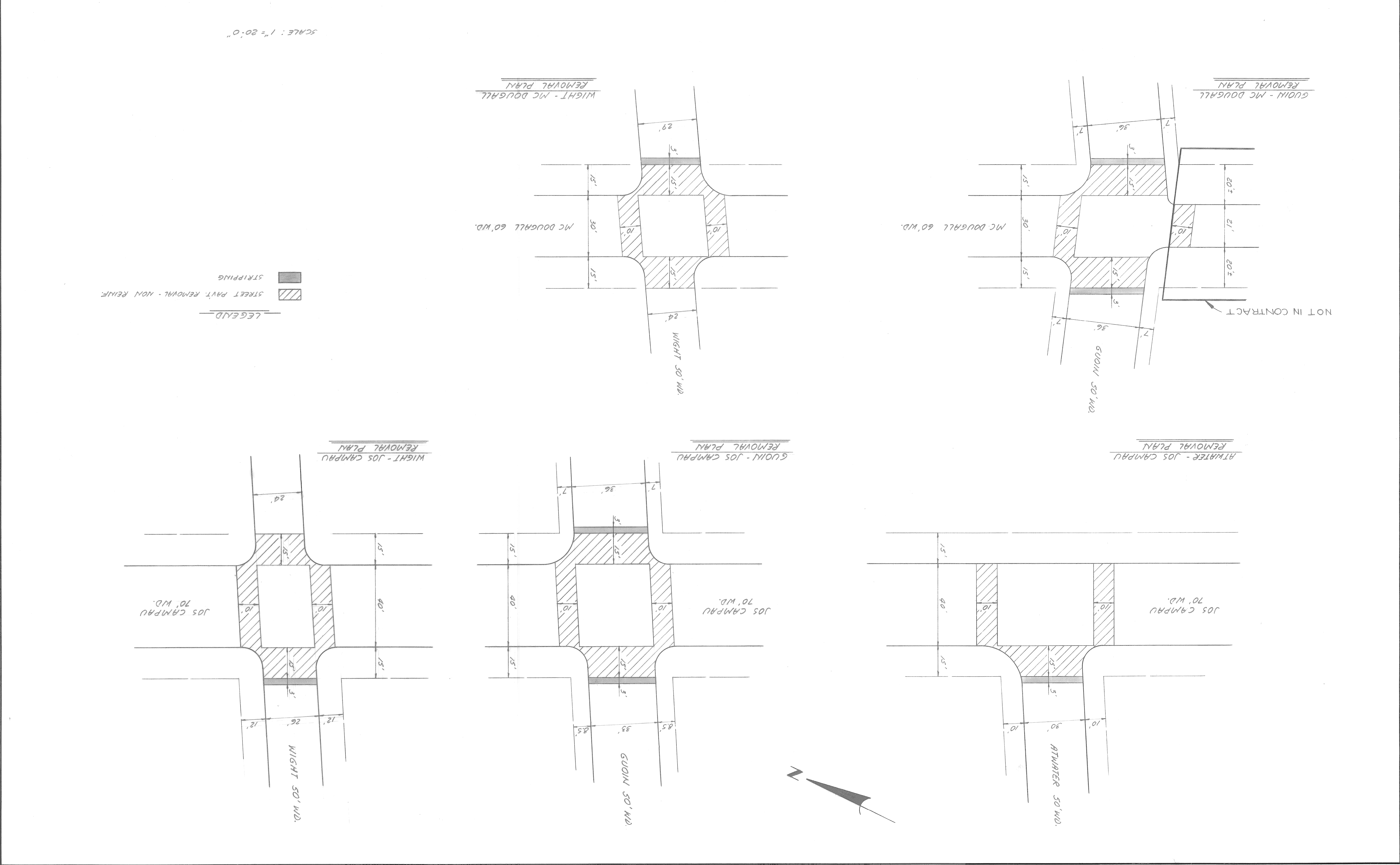
GUOIN
50' WD.

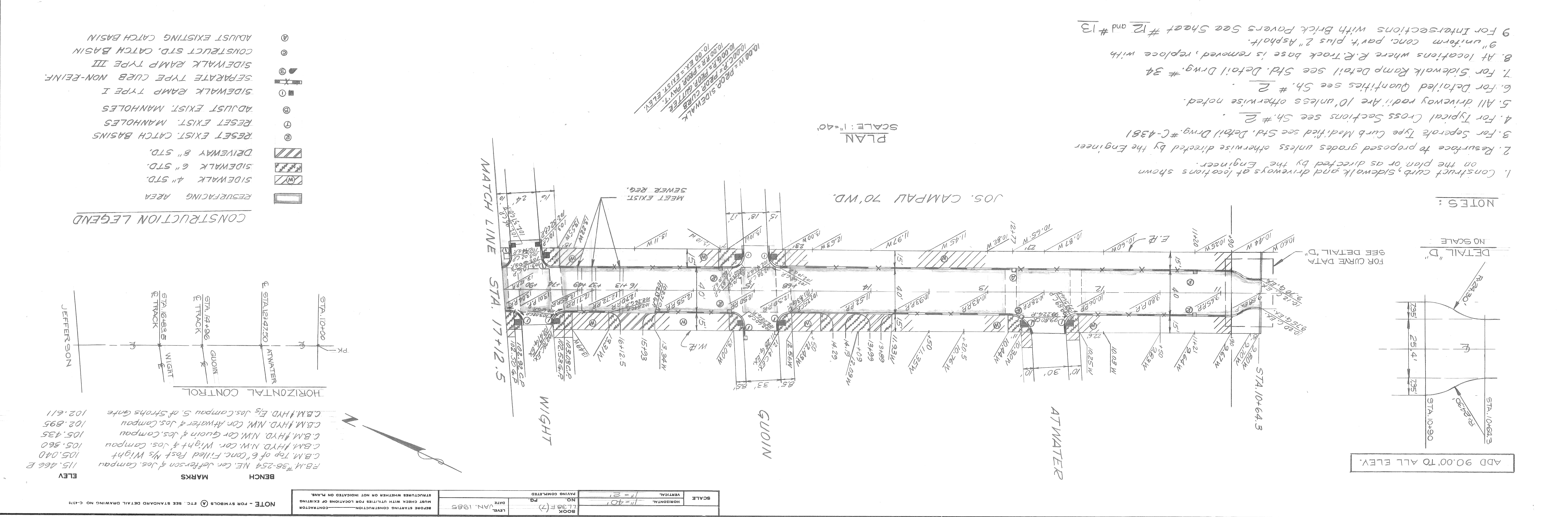
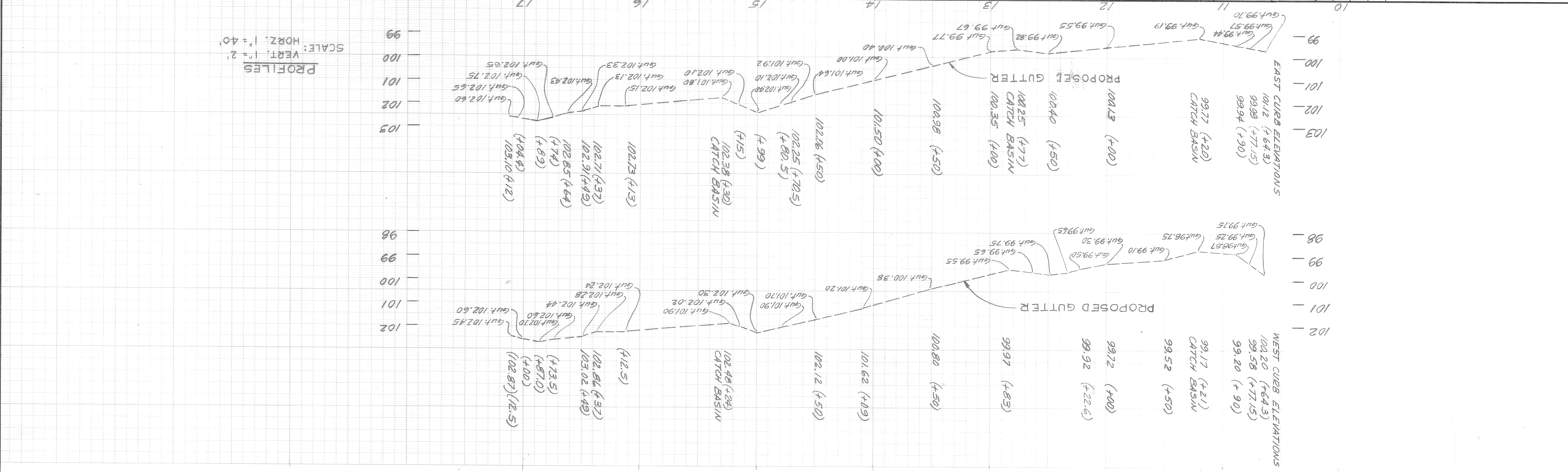
GUOIN
50' WD.

STA. 7+17

ASPHALT

DATE 6-22-87		ASSIGNMENT NO. 84-14-20		CONTRACT NO. PW-6727		SHEET 7 OF 27 SHEETS	
RESURFACING AND MISCELLANEOUS CONSTRUCTION JOS. CAMPANU, MCDUGALL, WIGHT, AND FRANKLIN ST. RIVER PLACE DEVELOPMENT				INTERSECTION REMOVAL PLAN			
CITY OF DETROIT CITY ENGINEERING DEPARTMENT BUREAU OF STREETS AND HIGHWAYS				FOR			
APPROVED: <i>M.M.</i> ENGINEER OF STREETS				DRAWN BY: <i>A.G.</i>			
CHECKED BY: <i>B.G.</i>				TRACED BY:			
DESIGNED BY: <i>B.G.</i>				DRAWN BY: <i>A.G.</i>			
REVISIONS LOCATED BY COORDINATES ON SHEET				COORD.			
DESCRIPTION				BRN. CKD. APVD. DATE			





- CONSTRUCTION LEGEND**
- RESURFACING AREA
 -
 -
 -
 - RESET EXIST. CATCH BASINS
 - ADJUST EXIST. MANHOLES
 - SIDEWALK RAMP TYPE I
 - SEPARATE TYPE CURB NON-REINF.
 - SIDEWALK RAMP TYPE III
 - SIDEWALK RAMP TYPE III
 - ADJUST EXISTING CATCH BASIN

- NOTES:**
- Construct curb, sidewalk and driveways at locations shown on the plan or as directed by the Engineer.
 - Resurface to proposed grades unless otherwise directed by the Engineer.
 - For Separate Type Curb Modified see Std. Detail Drng. # C-4381.
 - For Typical Cross Sections see Sh. # 2.
 - All driveway radii are 10' unless otherwise noted.
 - For Detailed Quantities see Sh. # 2.
 - For Sidewalk Ramp Detail see Std. Detail Drng. # 34.
 - At locations where R.E. Track base is removed, replace with 9" uniform conc. pav't, plus 2" Asphalt.
 - For Intersections with Brick Pavers see Sheet # 12 and # 13.

BOOK	LC38(F-7)
DATE	JAN. 1985
LEVEL	
PAVING COMPLETED	
NO.	11-401
SCALE	HORIZONTAL 1" = 40'
	VERTICAL 1" = 2'

MARKS

ELEV	MARKS
115.466 E	P.B.M. 38-254 NE. Cor. Jefferson & Jos. Campau
105.040	C.B.M. Top of 6" Conc. Filled Fast 1/2" Wight
105.560	C.B.M. HYD. N.W. Cor. Wight & Jos. Campau
105.435	C.B.M. HYD. N.W. Cor. Guoin & Jos. Campau
102.895	C.B.M. HYD. N.W. Cor. Atwater & Jos. Campau
102.611	C.B.M. HYD. Egs. Jos. Campau S. of Strohs Gate



ADD 90.00' TO ALL ELEV.

FOR CURVE DATA SEE DETAIL "D"

DETAIL "D" NO SCALE

STA. 10+64.3

STA. 10+90

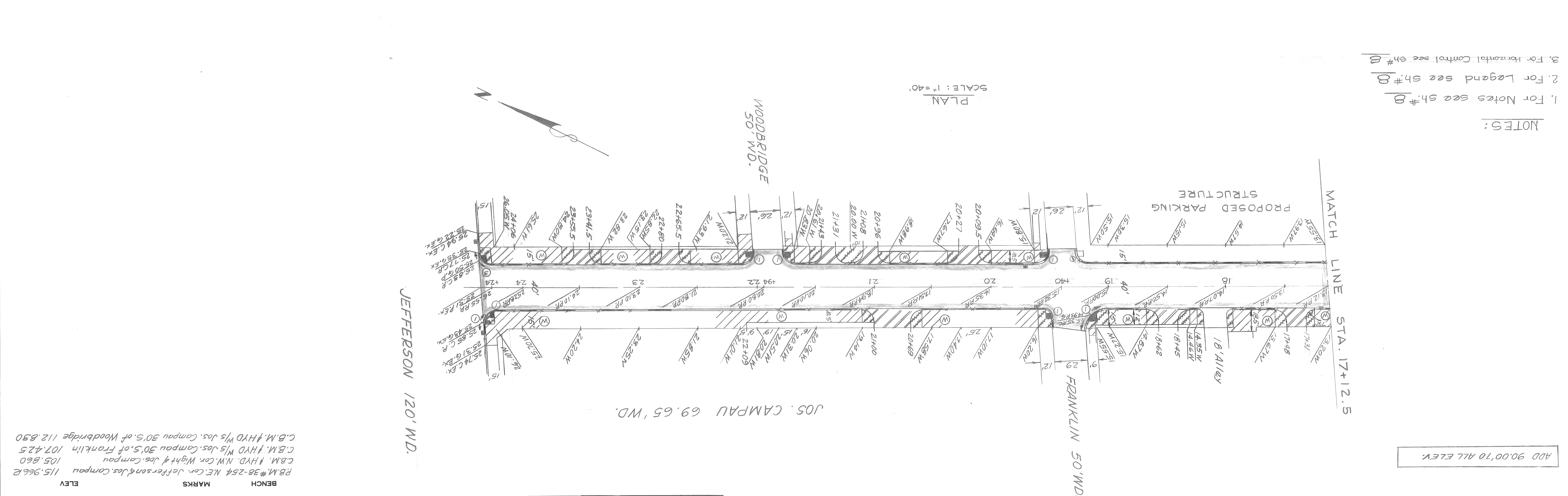
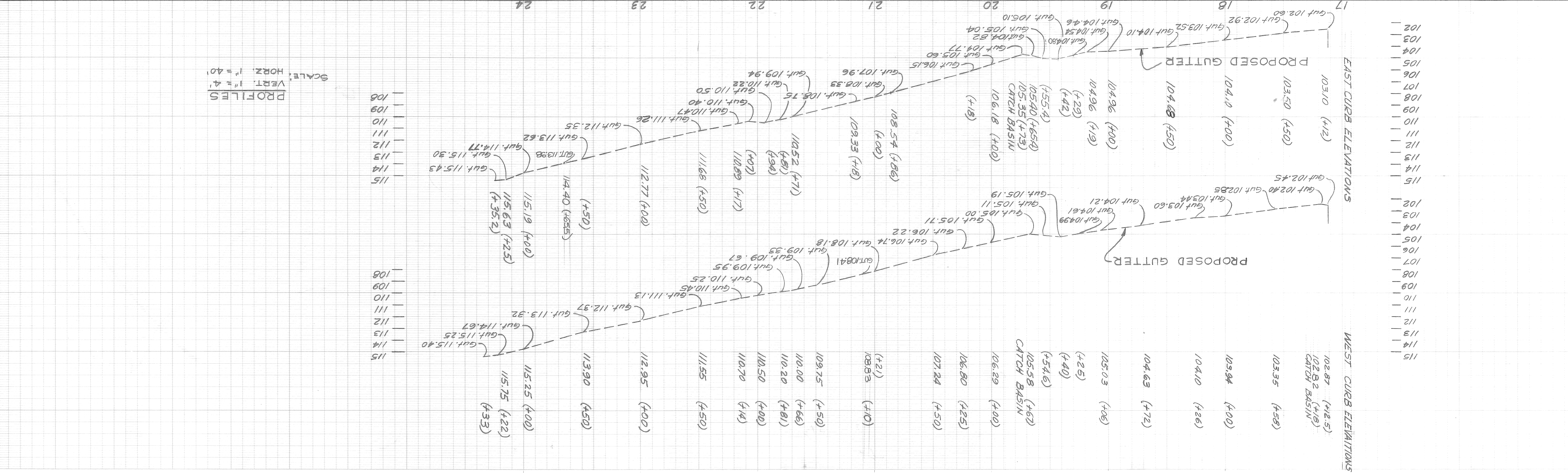
STA. 10+92.3

25' 4"

25' 4"

25' 4"

DATE 6-22-87	INDEX NO. 84-14-20	ASSIGNMENT NO. PW 6727	CONTRACT NO. 9 OF 27 SHEETS
RESURFACING AND MISCELLANEOUS CONSTRUCTION JOS. CAMPAU, McDOUGALL, WIGHT, AND FRANKLIN ST.			
PAVING PLAN			



NOTE - FOR SYMBOLS SEE STANDARD DETAIL DRAWING NO. CL15

BOOK 138(F) DATE JAN 1985

SCALE HORIZONTAL 1" = 40' VERTICAL 1" = 4'

BEFORE STARTING CONSTRUCTION CONTRACTOR MUST CHECK WITH UTILITIES FOR LOCATIONS OF EXISTING STRUCTURES WHETHER OR NOT INDICATED ON PLAN.

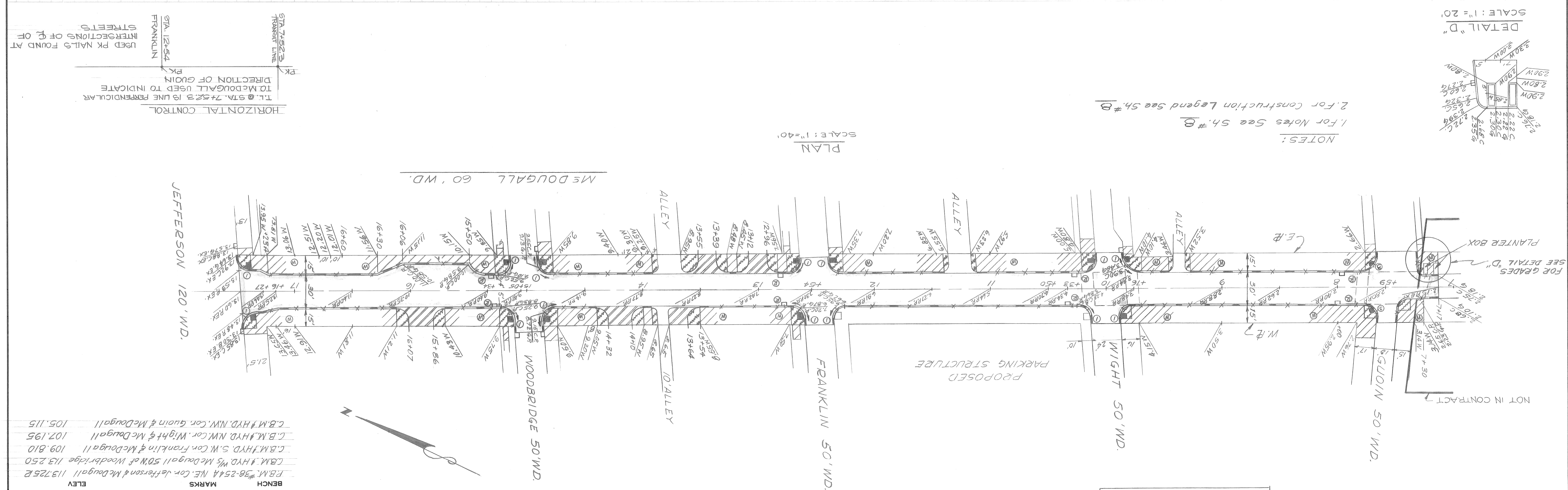
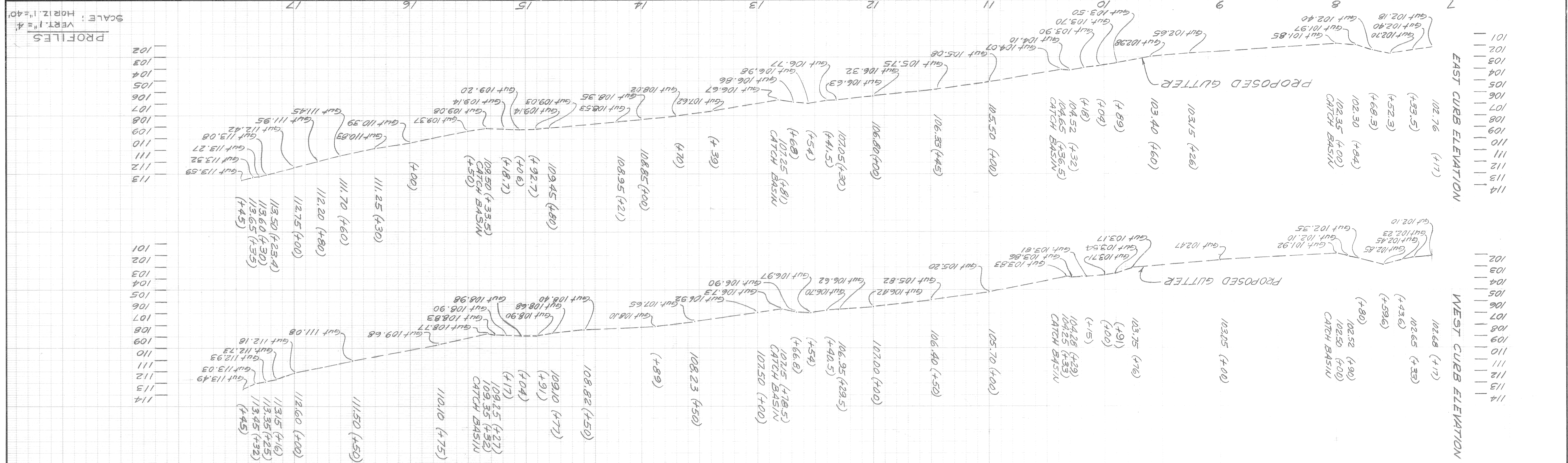
BENCH MARKS ELEV. RB.M.#38-254 N.E. Cor. Jefferson & Jos. Campau 115.9662 C.B.M. HYD. N.W. Cor. Wight & Jos. Campau 105.860 C.B.M. HYD W/S Jos. Campau 30'S of Franklin 107.425 C.B.M. HYD W/S Jos. Campau 30'S of Woodbridge 112.830

ADD 90.00' TO ALL ELEV.

NOTES:

1. For Notes see sh.# B
2. For Legend see sh.# B
3. For Horizontal Control see sh.# B

DATE 6-22-87		NO. 84-14-20		ASSIGNMENT		CONTRACT PW6727		SHEET 10 OF 27 SHEETS	
RESURFACING AND MISCELLANEOUS CONSTRUCTION JES CAMPANU, MC DOUGALL, WIGHT, AND FRANKLIN ST RIVER PLACE DEVELOPMENT PAVING PLAN									
CITY OF DETROIT ENGINEERING DIVISION-D.P.W. BUREAUS OF STREETS AND HIGHWAYS FOR									
APPROVED		CHECKED BY		BY		GRADE		ESTIMATE	
PLAN		GRADE		ESTIMATE		REVISIONS		DESCRIPTION	



NOTE - FOR SYMBOLS ETC. SEE STANDARD DETAIL DRAWING NO. C-175

CONTRACTOR MUST CHECK WITH UTILITIES FOR LOCATIONS OF EXISTING STRUCTURES WHETHER OR NOT INDICATED ON PLAN.

LEVL. JAN. 1985

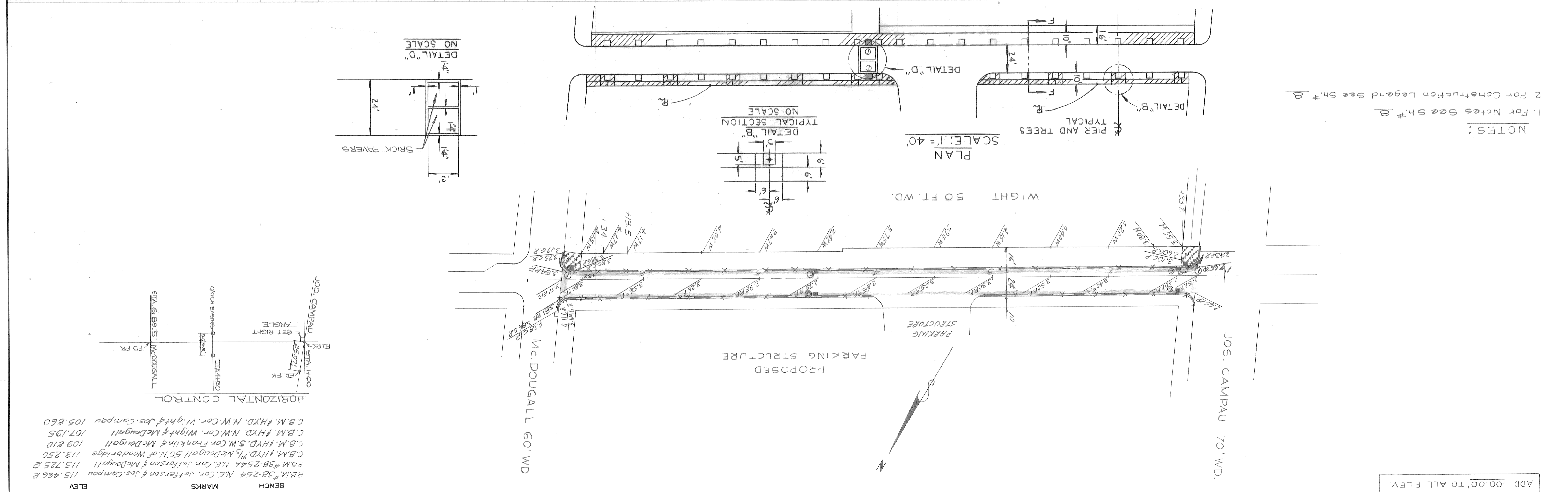
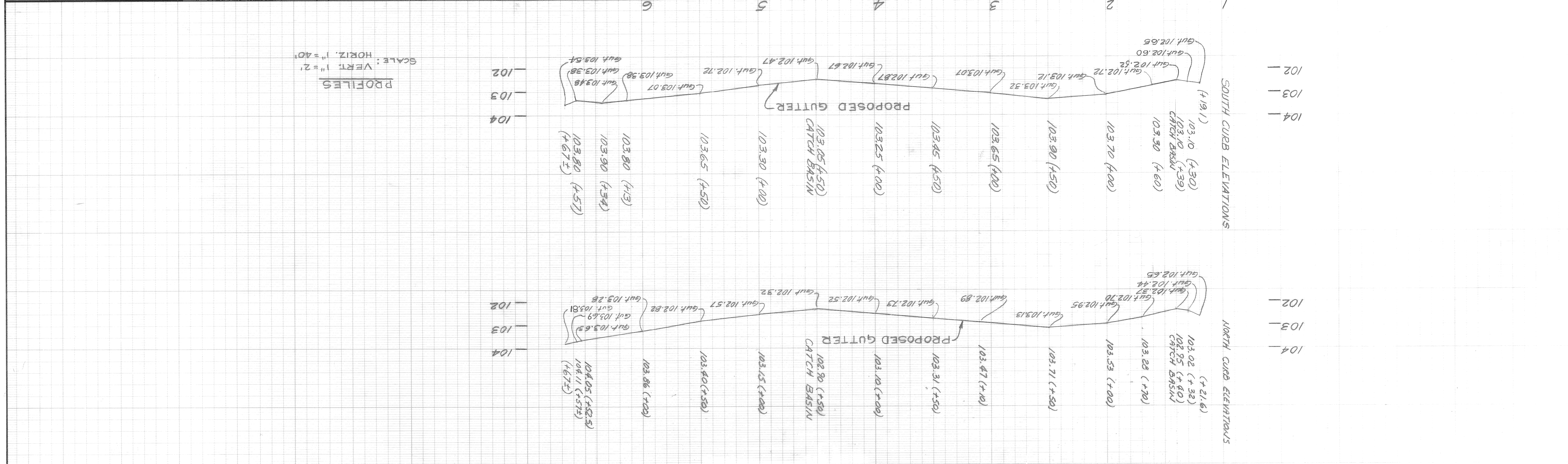
BOOK 138 FT

SCALE: HORIZONTAL 1"=40' VERTICAL 1"=4'

BENCH MARKS: F.B.M. #36-254 NE. Cor. Jefferson & McDougall 113.7252; C.B.M. #36-254 NE. Cor. Jefferson & McDougall 109.810; C.B.M. #36-254 NE. Cor. Wight & McDougall 107.195; C.B.M. #36-254 NE. Cor. Guoin & McDougall 105.115

ADD 100.00' TO ALL ELEV.

REVISIONS		DESCRIPTION	DATE	BY	CHECKED BY	APPROVED BY	M.O.W.	ENGINEER OF STREETS	CITY ENGINEERING DIVISION - D.P.W.	FOR BUREAUS OF STREETS AND HIGHWAYS	CITY OF DETROIT	RESURFACING AND MISCELLANEOUS CONSTRUCTION	JOS. CAMPAU, Mc DOUGALL, WIGHT, AND FRANKLIN ST.	RIVER PLACE DEVELOPMENT	PAVING PLAN		
NO.	CHG.																



DATE	NO.	DESCRIPTION
8-22-87	1	PAVING PLAN
8-14-20	2	ASSIGNMENT
PW 67 27	3	CONTRACT
11	4	SHEET

REVISIONS LOCATED BY COORDINATES ON SHEET		
COORD.	DESCRIPTION	DATE

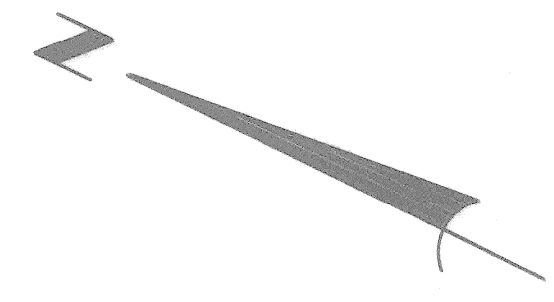
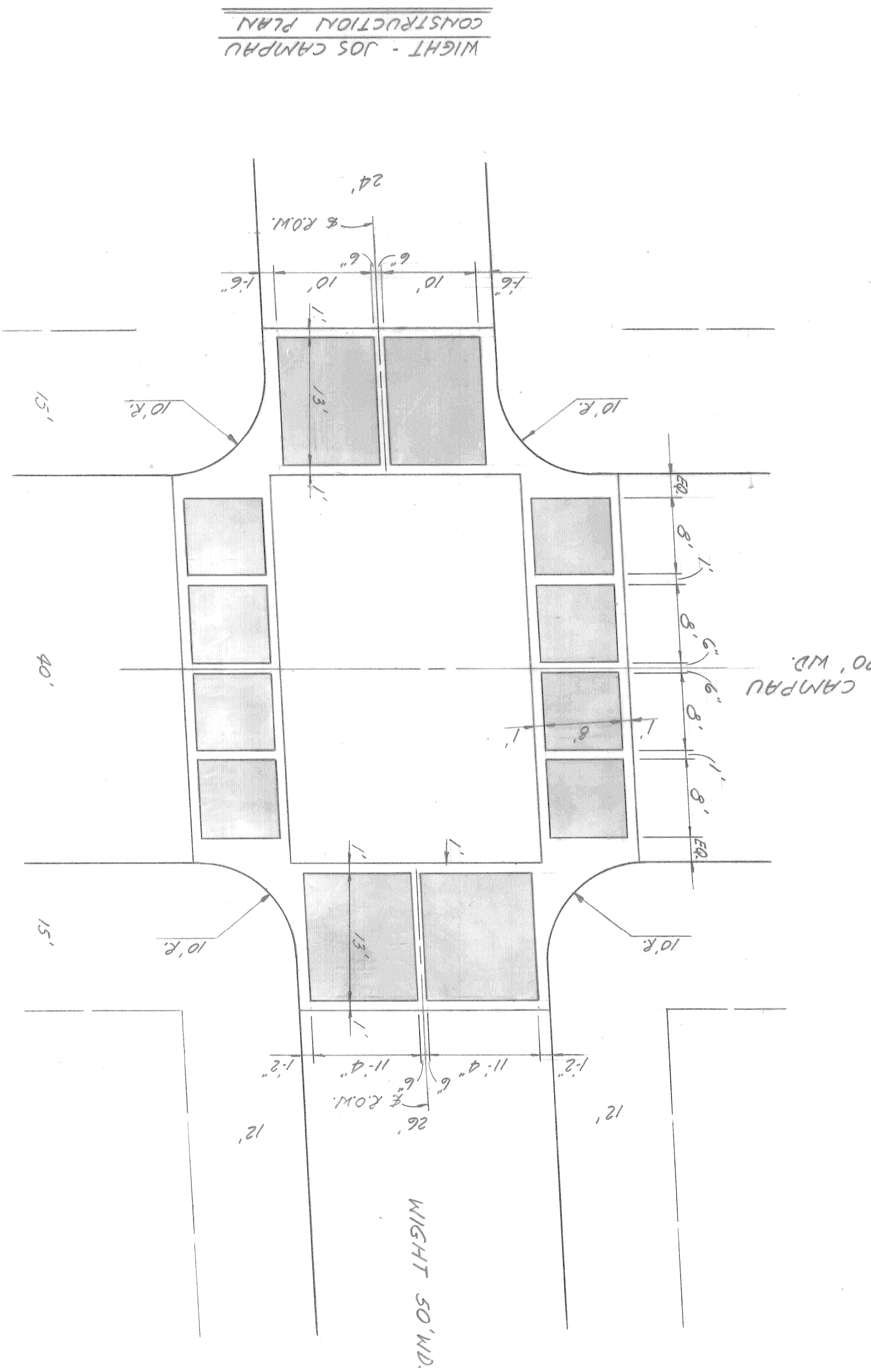
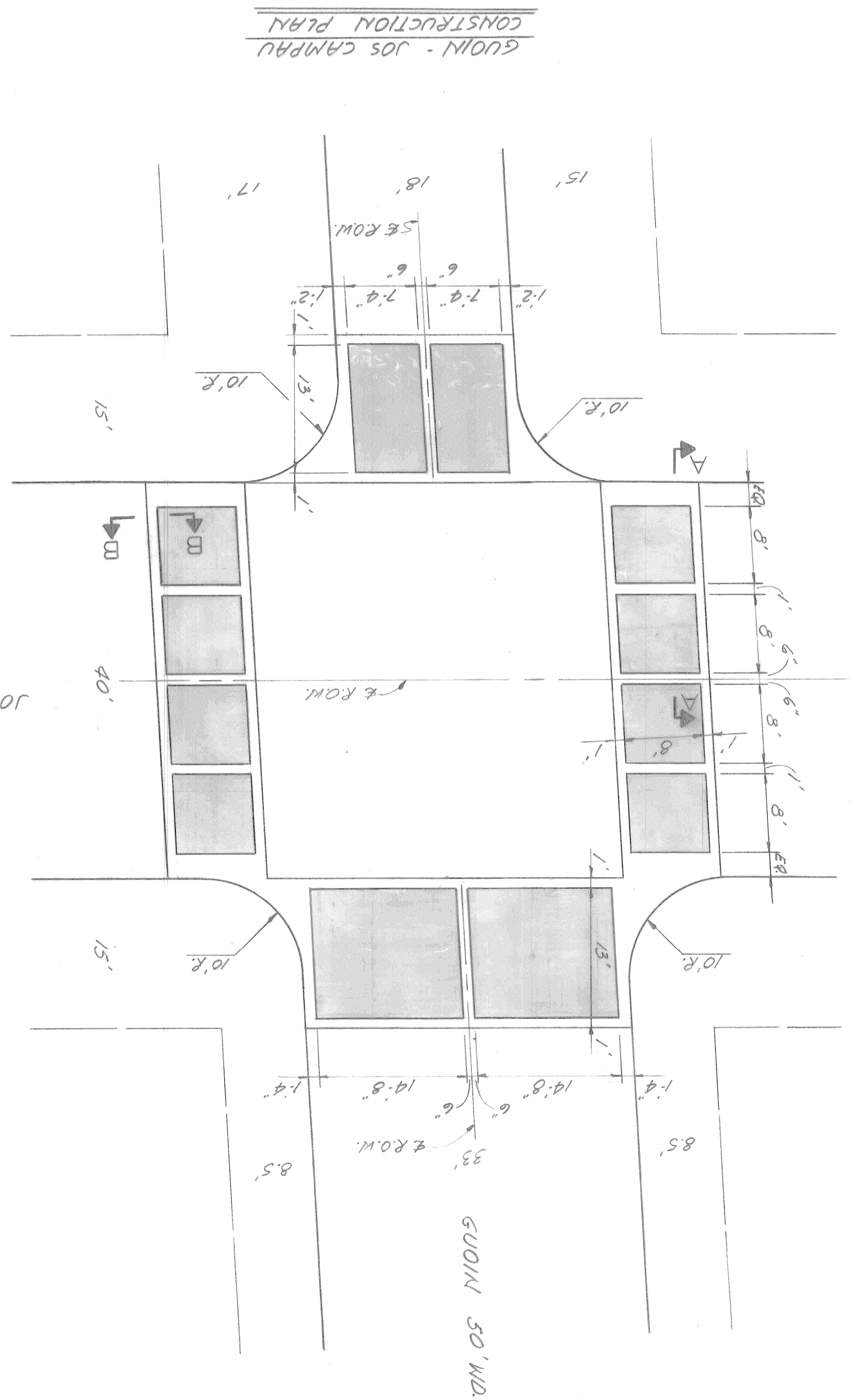
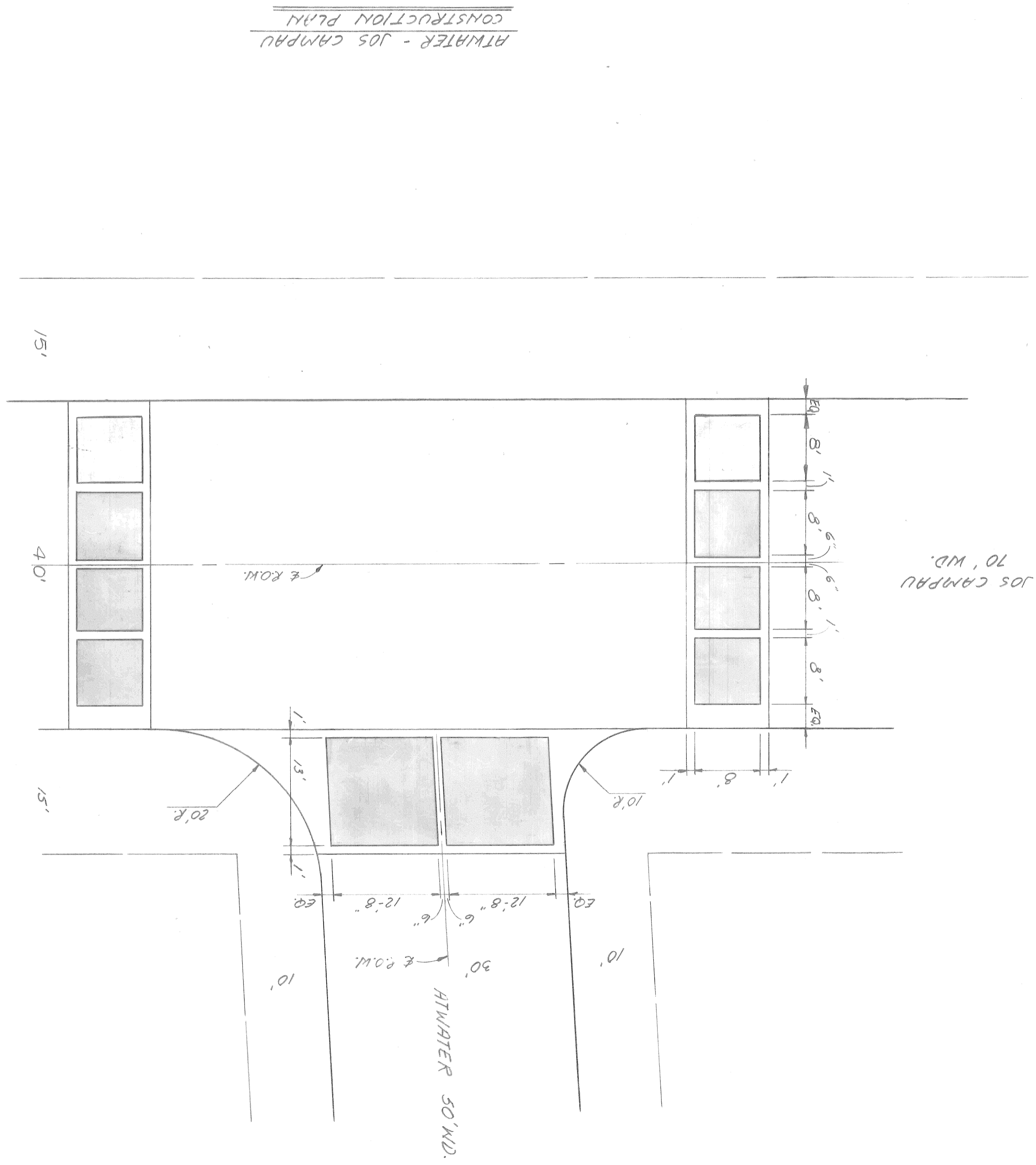
REFERENCE	DRAWINGS	DESIGNED BY	DRAWN BY	TRACED BY	CHECKED BY
			A.G.		R.G.U.

APPROVED: *M.O.W.*
ENGINEER OF STREETS

CITY OF DETROIT
CITY ENGINEERING DEPARTMENT
BUREAU OF STREETS AND HIGHWAYS
FOR

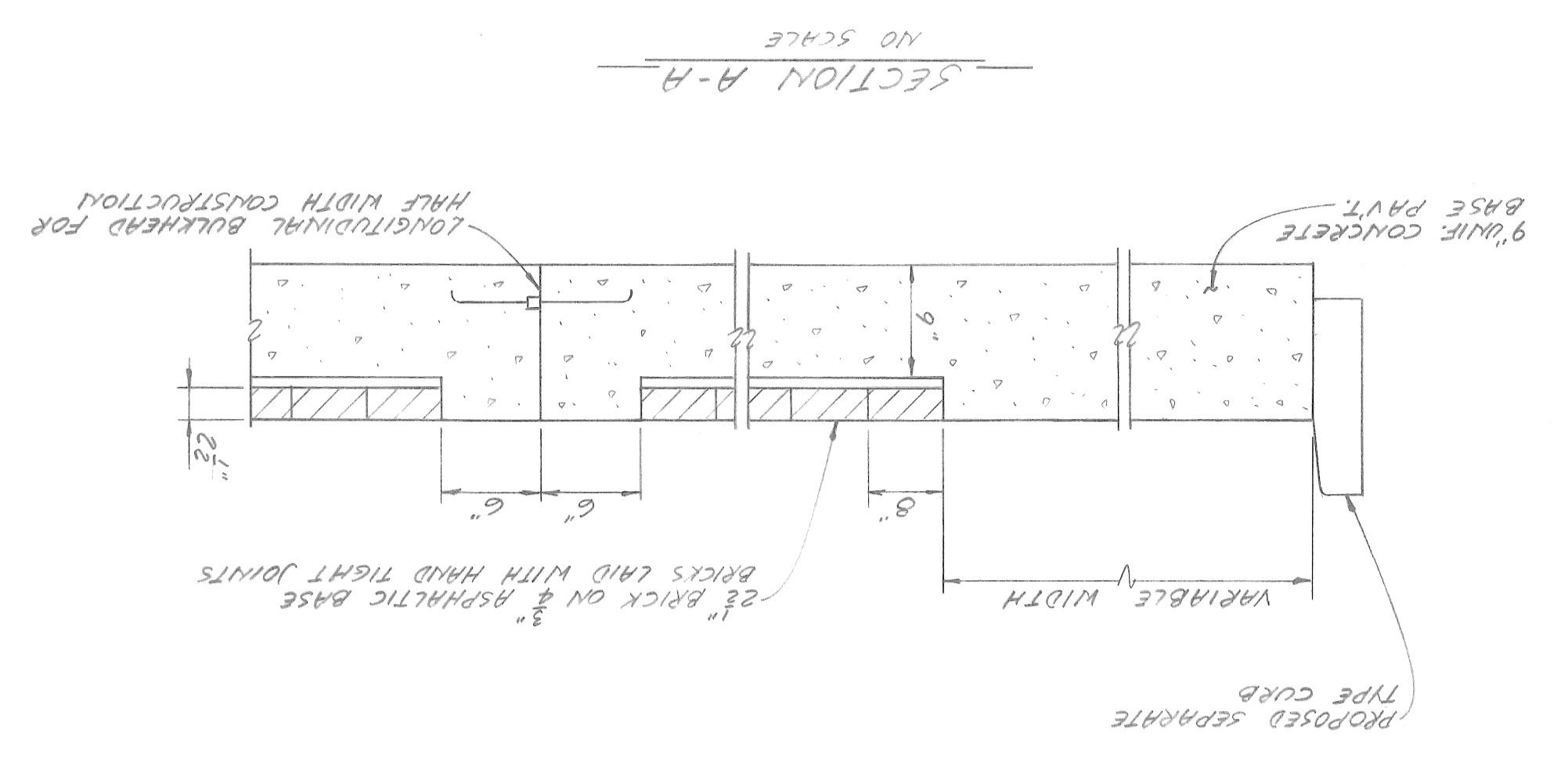
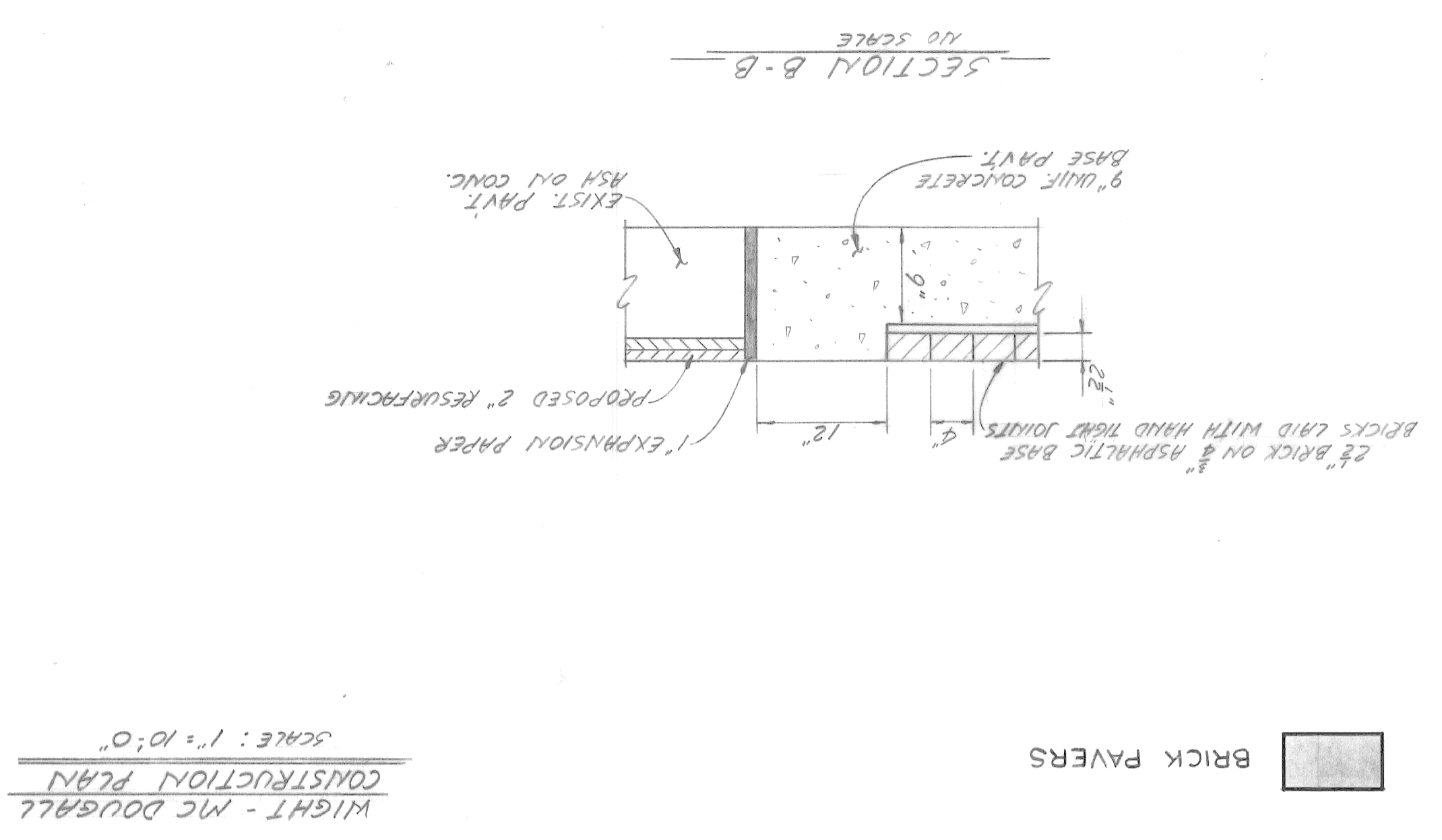
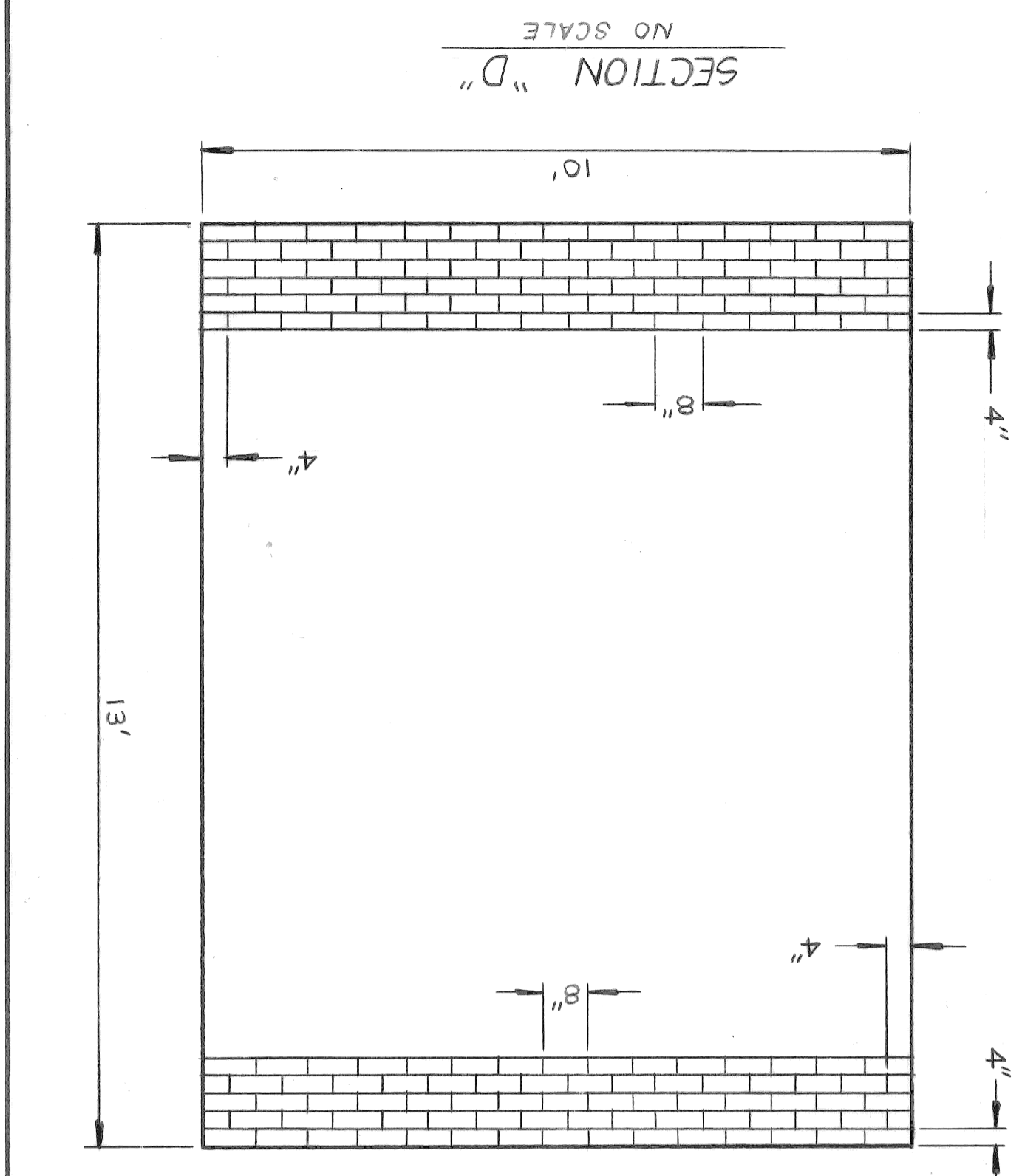
RESURFACING AND MISCELLANEOUS CONSTRUCTION
JOS. CAMPAU, MCDUGALL, WIGHT, AND FRANKIN ST.
RIVER PLACE DEVELOPMENT
INTERSECTION CONSTRUCTION PLAN

SHEET 12 OF 27 SHEETS
CONTRACT NO. PW-6727
ASSIGNMENT NO. 84-14-20
DATE 6-22-57



SCALE: 1"=10'-0"

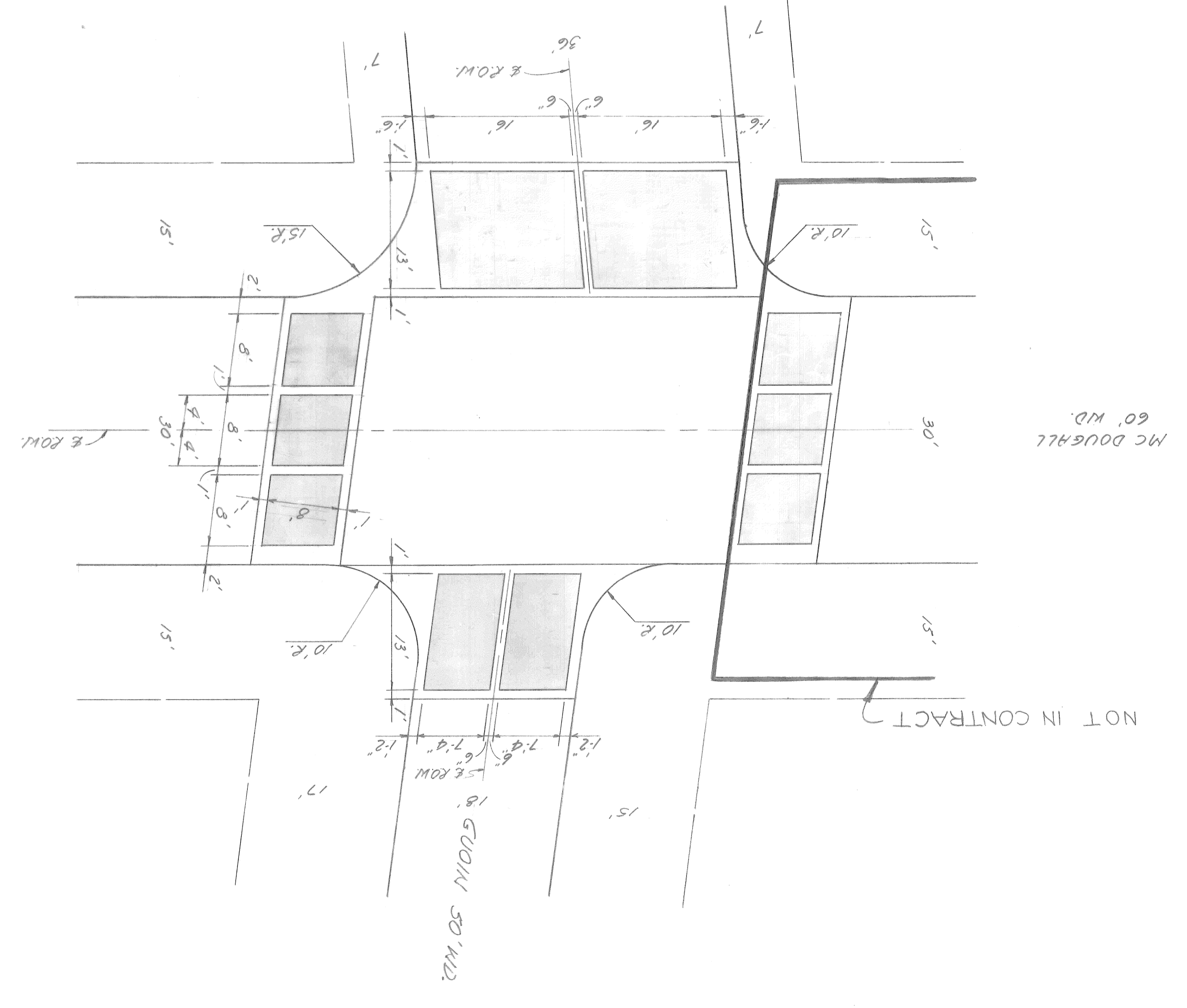
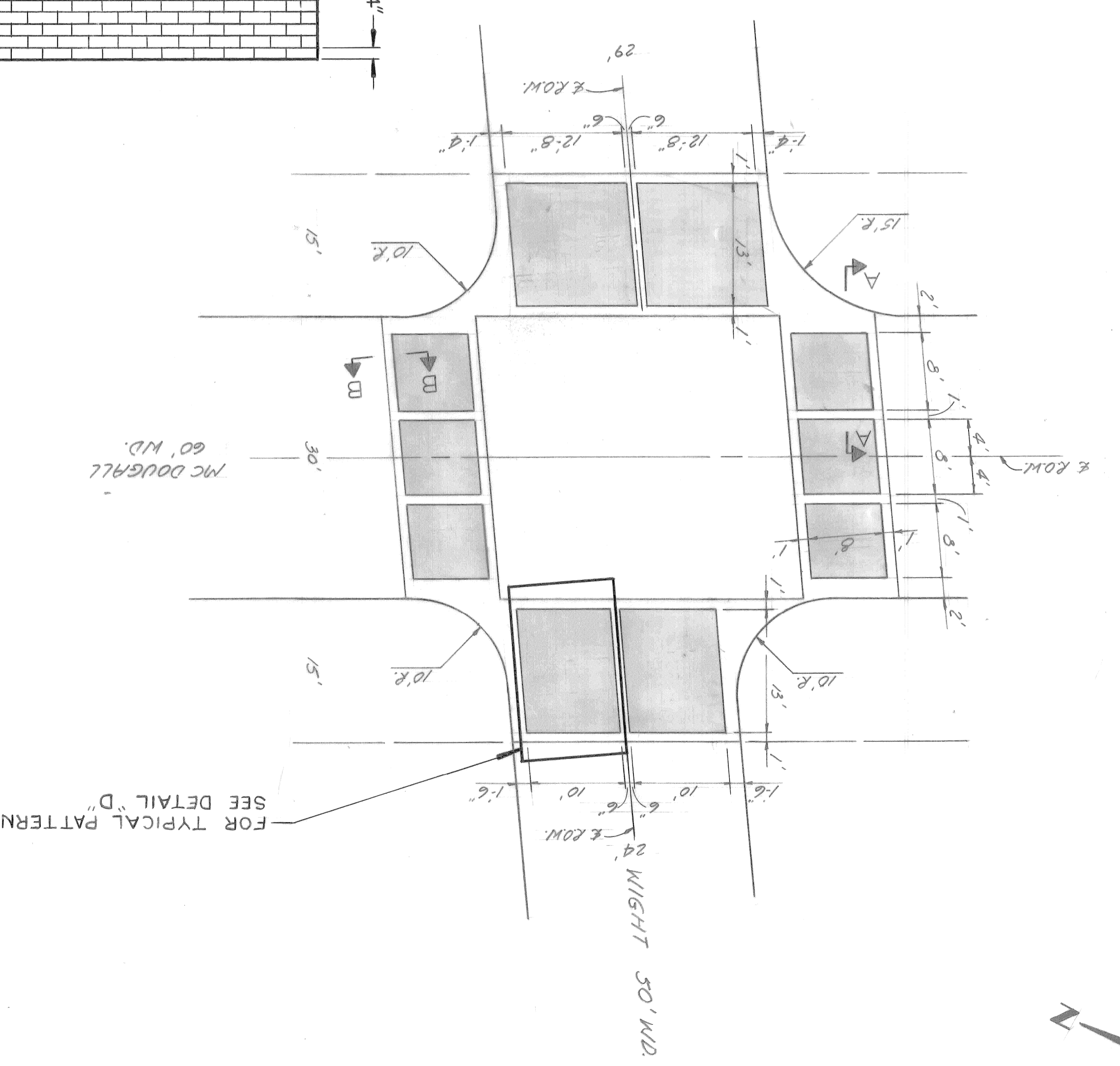
DATE 6-22-87		INTERSECTION CONSTRUCTION PLAN		CITY OF DETROIT		APPROVED: M.O.M.		DESIGNED BY: A.G.		REVISIONS	
ASSIGNMENT NO. 84-14-20		RESURFACING AND MISCELLANEOUS CONSTRUCTION		FOR		ENGINEER OF STREETS		DRAWN BY: A.G.		DRAWINGS	
CONTRACT NO. PW-6727		JOS. CAMPAN, MCDUGALL, WIGHT, AND FRANKLIN ST.		BUREAUS OF STREETS AND HIGHWAYS				TRACED BY:		REFERENCES	
SHEET 13 OF 27 SHEETS		RIVER PLACE DEVELOPMENT		CITY OF DETROIT				CHECKED BY:		REVISIONS LOCATED BY COORDINATES ON SHEET	



WIGHT - MC DOUGALL
CONSTRUCTION PLAN
SCALE: 1" = 10' 0"

GUION - MC DOUGALL
CONSTRUCTION PLAN
SCALE: 1" = 10' 0"

BRICK PAVERS



NOT IN CONTRACT