

CITY OF DETROIT
COLEMAN A. YOUNG - MAYOR
CITY ENGINEERING DEPARTMENT

PLANS FOR PROPOSED

**PAVING OF MACK FROM ALLEY WEST OF RIOPELLE TO
 GRAND TRUNK R.R., ALSO DEQUINDRE
 FROM MACK TO CANFIELD, AND MISCELLANEOUS
 CONSTRUCTION, FOREST PARK REHABILITATION PROJECT**



INDEX OF SHEETS

- 1 TITLE SHEET
- 2 CONSTRUCTION SEQUENCE
- 3-5 ALIGNMENT SHEETS
- 6 TYPICAL SECTIONS
- 7-8 UTILITY AND REMOVAL SHEETS
- 9-13 PAVING PLANS
- 14 RUSSELL CUL-DE-SAC - UTILITY, REMOVAL, AND ALIGNMENT
- 15 RUSSELL CUL-DE-SAC - PAVING PLAN AND TYPICAL SECTION
- 16 PAVEMENT MARKINGS
- 17 QUANTITY SHEET
- 18 SEWER ALTERATIONS
- 19-26 WATER SYSTEM ALTERATIONS
- 27-56 P.L.D. PLANS AND STANDARDS

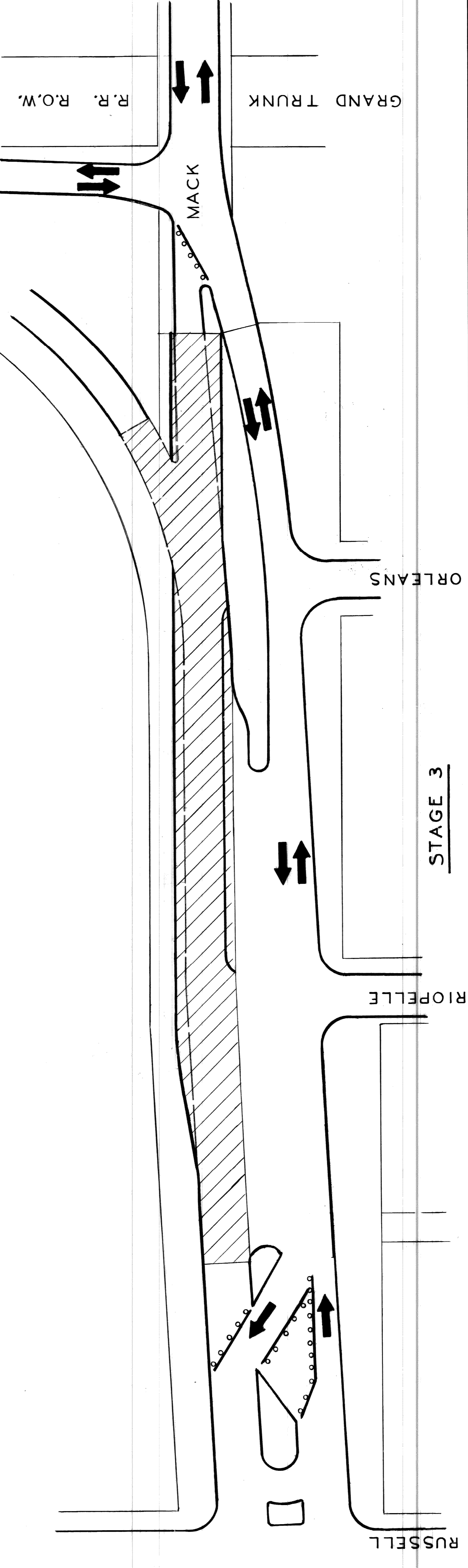
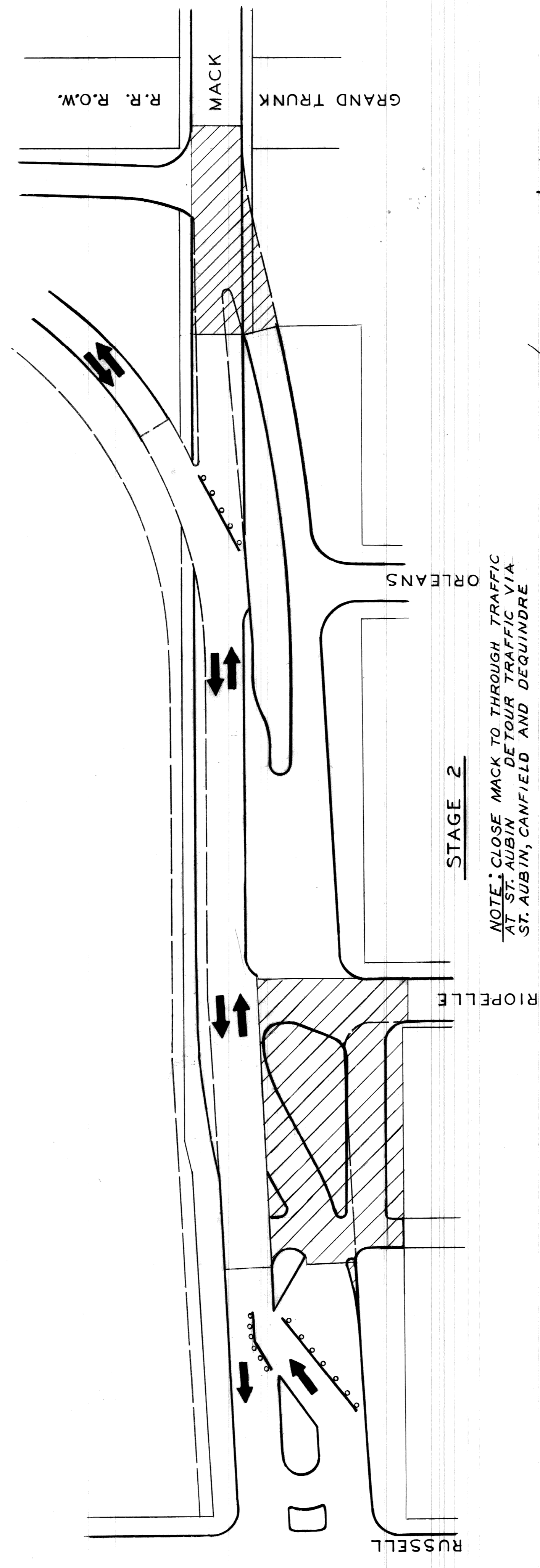
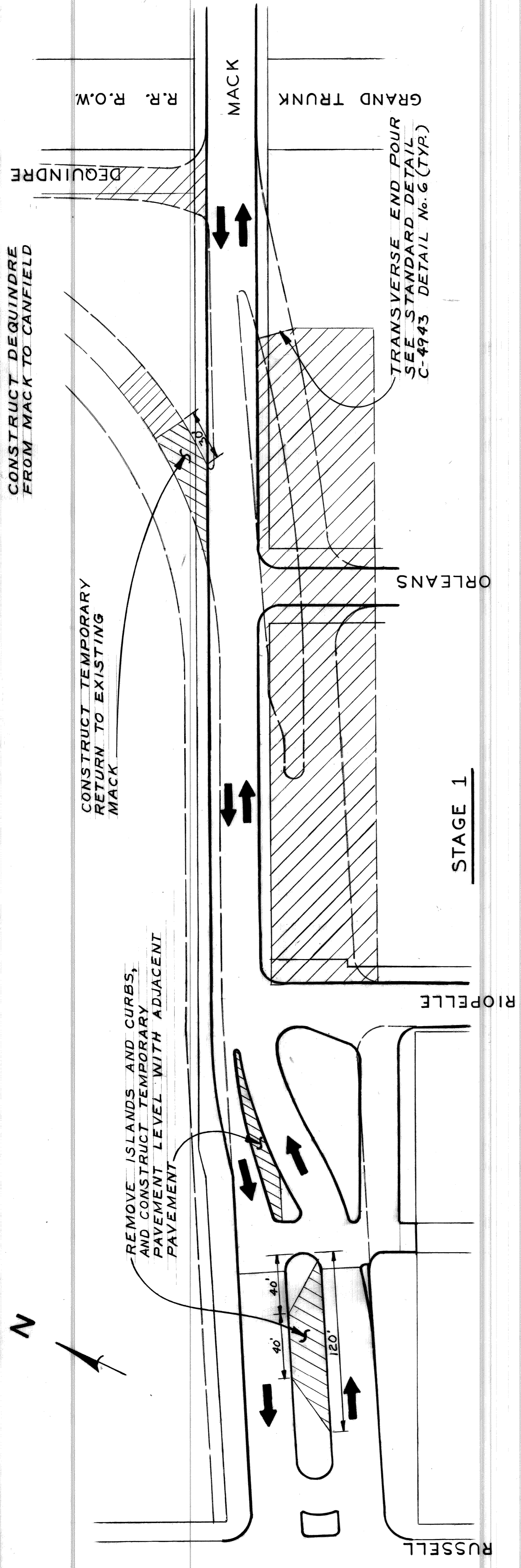
PROJECT: PAVING OF MACK FROM ALLEY WEST OF RIOPELLE TO GRAND TRUNK R.R. ALSO DEQUINDRE FROM MACK TO CANFIELD, AND MISCELLANEOUS CONSTRUCTION

CONTRACT NO. PW 6691

PLANS PREPARED BY
CITY ENGINEERING DEPARTMENT

RECOMMENDED FOR APPROVAL	<i>[Signature]</i>	4-1-90
ENGINEER OF INSPECTION		DATE
RECOMMENDED FOR APPROVAL	<i>[Signature]</i>	4/1/90
ENGINEER OF STREETS		DATE
APPROVED	<i>[Signature]</i>	4/1/90
DEPUTY DIRECTOR		DATE
APPROVED	<i>[Signature]</i>	4/1/90
DIRECTOR		DATE

DATE: APRIL, 1990 **DRWG. NO. 1 OF 50**



LEGEND

- CONSTRUCTION AREA
- TEMPORARY PAVEMENT 9" UNIFORM CONCRETE WITH INTEGRAL CURB
- BEAM BARREL BARRICADE
- EXISTING PAVEMENT OR PAVEMENT CONSTRUCTED IN A PREVIOUS STAGE
- PROPOSED FINAL ALIGNMENT

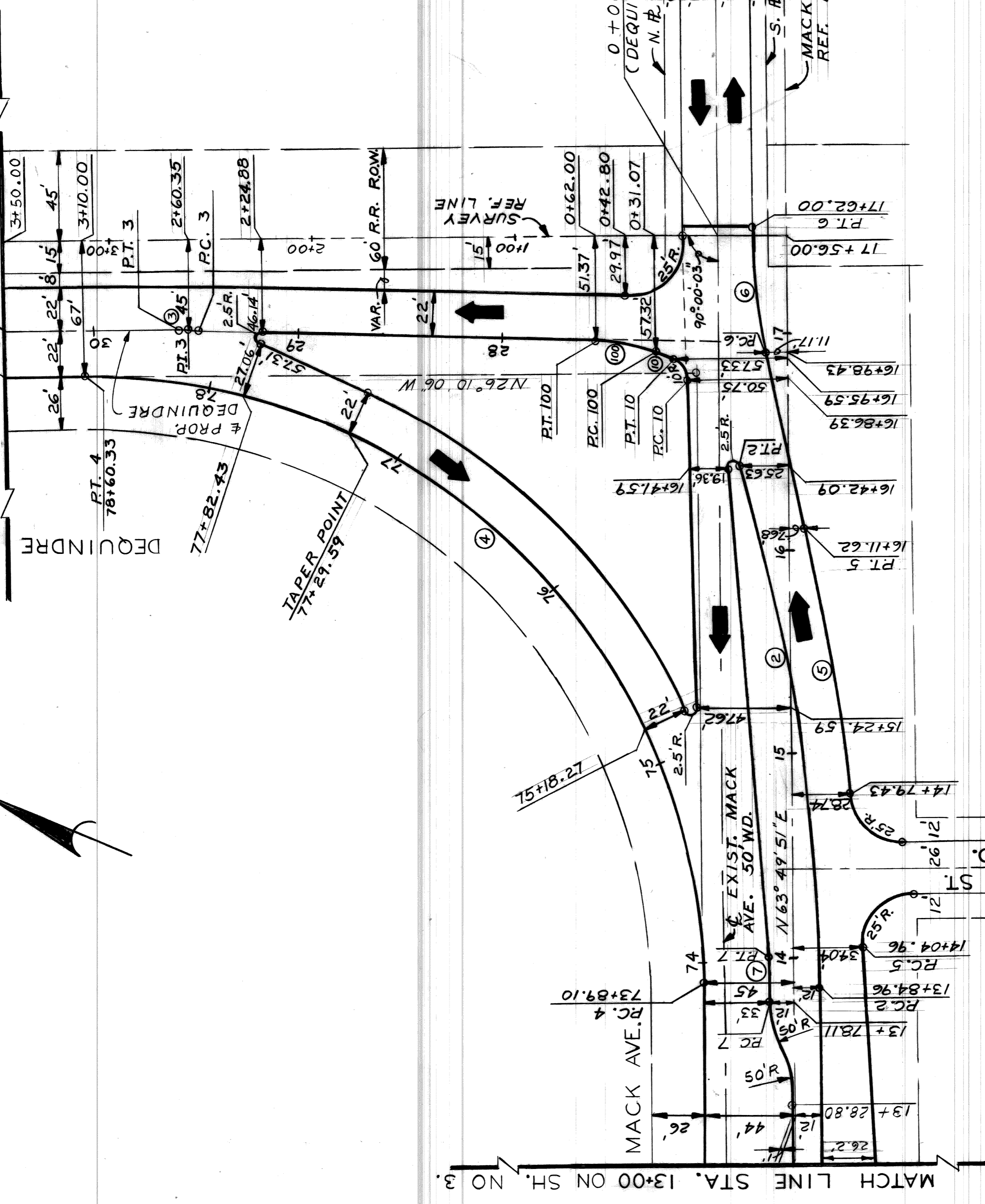
NOTE
SEE TRAFFIC RESTRICTIONS INCLUDED IN THE SPECIAL NOTICE TO BIDDERS.
PLANS NOT TO SCALE

STAGE 4
REBUILD ISLAND WEST OF RIOPELLE

SHEET 2 OF 56 SHEETS CONTRACT NO. PW 6691 ASSIGNMENT NO. 90-14-08 DATE APRIL, 1990		PAVING OF MACK FROM ALLEY WEST OF RIOPELLE TO GRAND TRUNK RR, ALSO DEQUINDRE FROM MACK TO CANFIELD, AND MISCELLANEOUS CONSTRUCTION FOREST PARK REHABILITATION PROJECT	
CITY OF DETROIT CITY ENGINEERING DEPARTMENT BUREAU OF STREETS AND HIGHWAYS		CONSTRUCTION SEQUENCE	
APPROVED: ENGINEER OF STREETS	DESIGNED BY: LISTON DRAWN BY: R Rosik 1/2/87 TRACED BY: CHECKED BY: LISTON/WLT	1 2 3 4 5 6 7 8 9 10 11	1 2 3 4 5 6 7 8 9 10 11

MATCH LINE STA. 3+50 ON SH. NO. 5

STA. 30+44.34



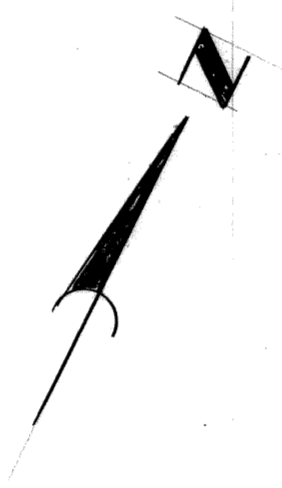
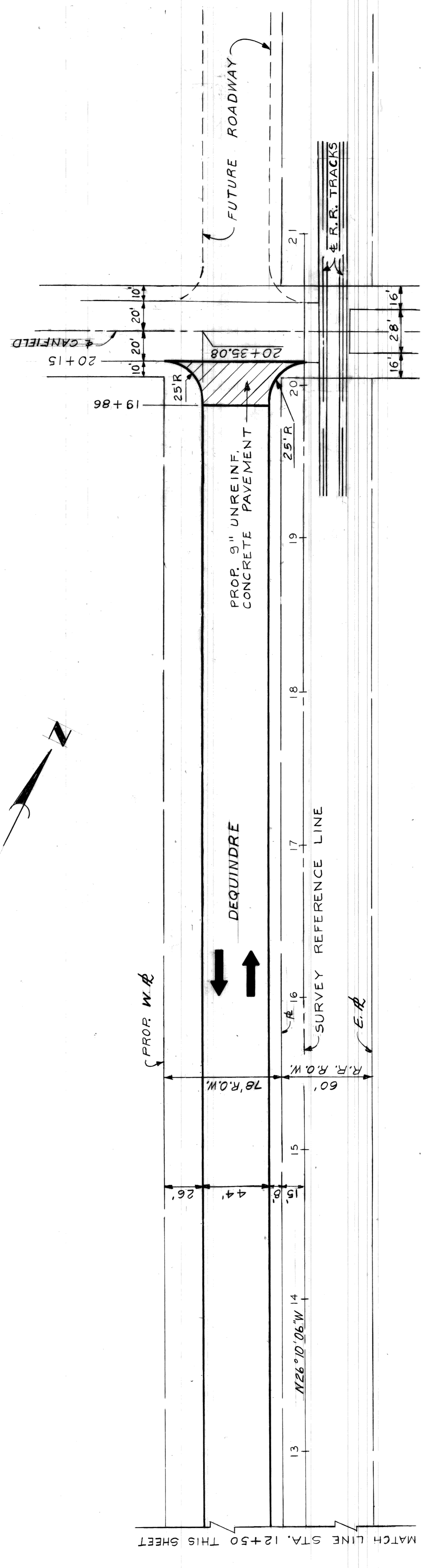
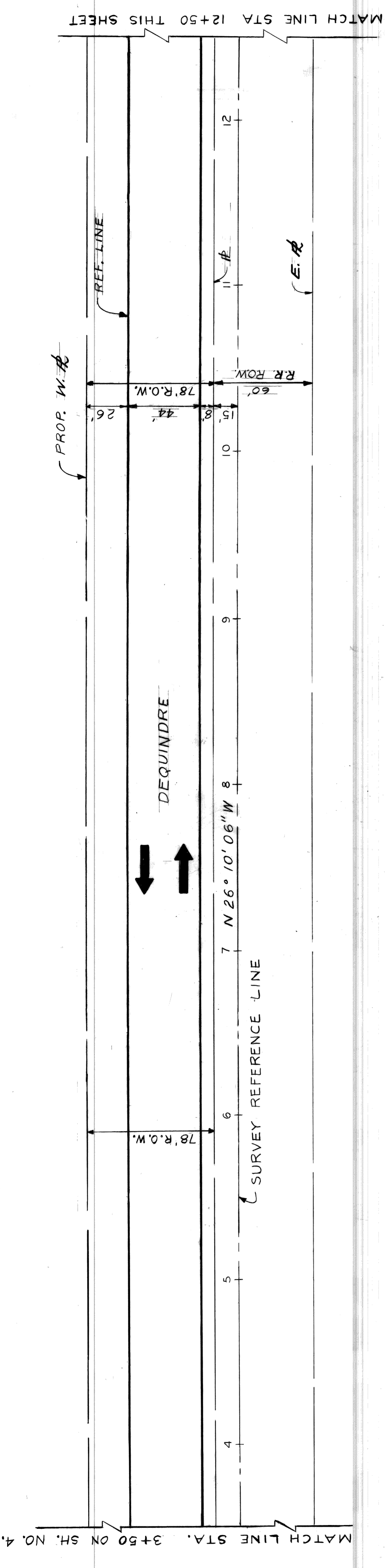
CURVE DATA

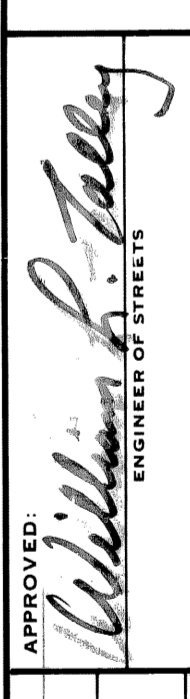
CURVE # 2	CURVE # 3	CURVE # 4	CURVE # 5
R = 900'	R = 200'	R = 300'	R = 1200'
$\Delta = 16^{\circ}37'34.5''$	$\Delta = 1^{\circ}50'20.9''$	$\Delta = 89^{\circ}59'57''$	$\Delta = 9^{\circ}57'82.8''$
T = 131.51'	T = 3.21'	T = 300'	T = 104.55'
A = 261.16'	A = 6.42'	A = 471.23'	A = 208.58'
S = 1642.0'	S = 2.94'	S = 19314.16'	S = 629.24'

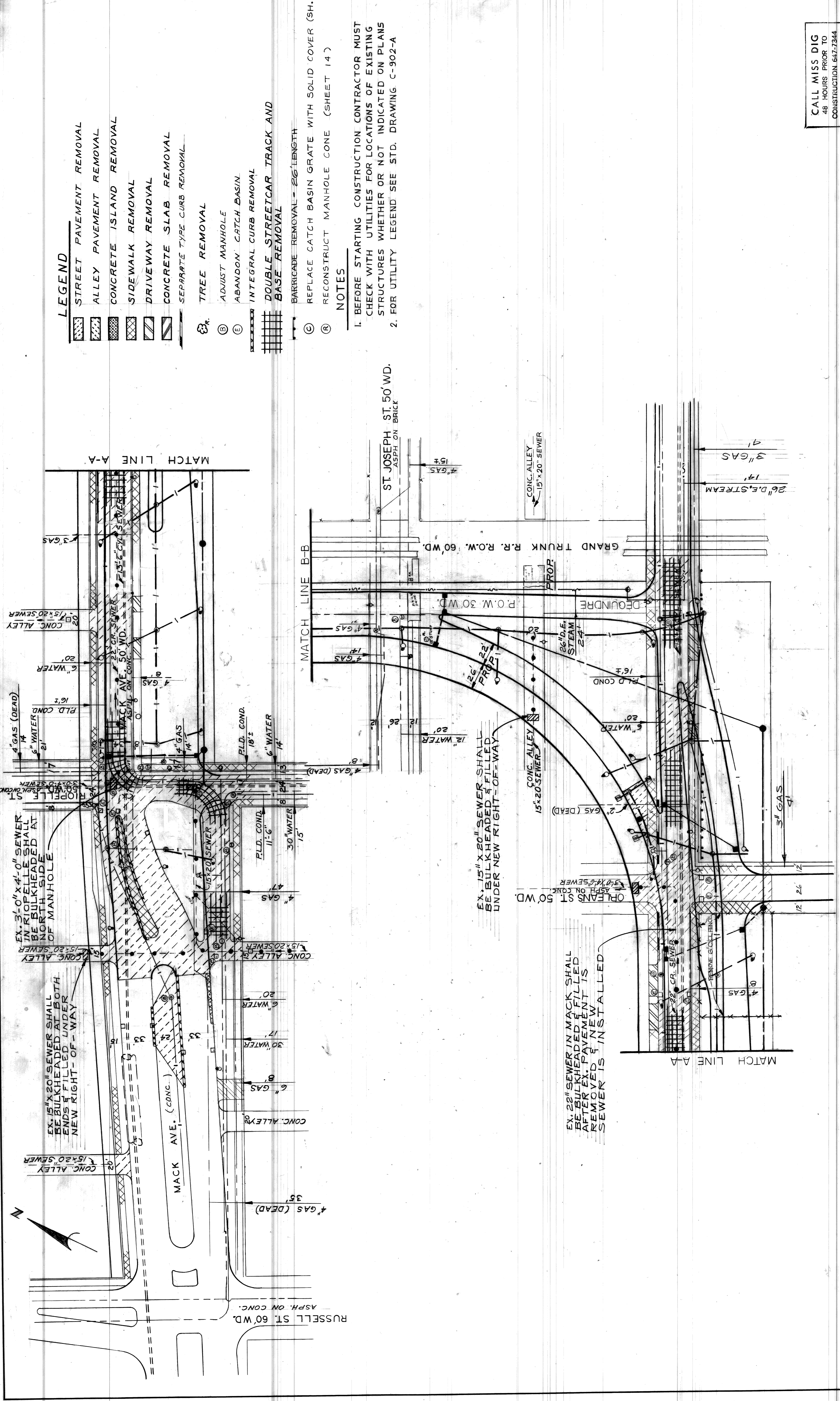
CURVE # 6	CURVE # 7	CURVE # 10	CURVE # 100
R = 300'	R = 300'	R = 10'	R = 100'
$\Delta = 12^{\circ}15'1.8''$	$\Delta = 4^{\circ}11'39.3''$	$\Delta = 68^{\circ}55'47.7''$	$\Delta = 18^{\circ}7'20.4''$
T = 32.19'	T = 10.99'	T = 6.86'	T = 15.95'
A = 64.14'	A = 21.97'	A = 12.03'	A = 31.63'
S = 73.14'	S = 2.94'	S = 13.47'	S = 26.24'

PLAN
SCALE 1"=40'

DESIGNED BY A.B.P. LISTON	APPROVED <i>William L. Talley</i> ENGINEER OF STREETS	CITY OF DETROIT CITY ENGINEERING DEPARTMENT BUREAU OF STREETS AND HIGHWAYS	PAVING OF MACK FROM ALLEY WEST OF RIOPELLE TO THE GRAND TRUNK R.R., ALSO DEQUINDRE FROM MACK TO CANFIELD, AND MISCELLANEOUS CONSTRUCTION FOREST PARK REHABILITATION PROJECT
DRAWN BY R. ROSIK			
TRACED BY			
CHECKED BY LISTON			
REVISIONS LOCATED BY COORDINATES ON SHEET			
CONTRACT NO. PW 6691			
ASSIGNMENT NO. 90-14-08			
SHEET 4 OF 56 SHEETS			
DATE APRIL, 1990			



SHEET 5 OF 56 SHEETS CONTRACT NO. PW 6691 ASSIGNMENT NO. 90-14-08 DATE APRIL, 1990		PAVING OF MACK FROM ALLEY WEST OF RIOPELLE TO GRAND TRUNK RR., ALSO DEQUINDRE FROM MACK TO CANFIELD, AND MISCELLANEOUS CONSTRUCTION FOREST PARK REHABILITATION PROJECT	
CITY OF DETROIT CITY ENGINEERING DEPARTMENT BUREAU OF STREETS AND HIGHWAYS		ALIGNMENT SHEET	
APPROVED  ENGINEER OF STREETS	DESIGNED BY RBP	DRAWN BY L.G.	CHECKED BY E.O./W.B.
REFERENCE DRAWINGS	TRACED BY	REVISIONS LOCATED BY COORDINATES ON SHEET	DATE
1	2	3	4
5	6	7	8
9	10	11	



- LEGEND**
- STREET PAVEMENT REMOVAL
 - ALLEY PAVEMENT REMOVAL
 - CONCRETE ISLAND REMOVAL
 - SIDEWALK REMOVAL
 - DRIVEWAY REMOVAL
 - CONCRETE SLAB REMOVAL
 - SEPARATE TYPE CURB REMOVAL
 - TREE REMOVAL
 - ADJUST MANHOLE
 - ABANDON CATCH BASIN
 - INTEGRAL CURB REMOVAL
 - DOUBLE STREETCAR TRACK AND BASE REMOVAL
 - BARRICADE REMOVAL - 26' LENGTH
 - REPLACE CATCH BASIN GRATE WITH SOLID COVER (SH. 14)
 - RECONSTRUCT MANHOLE CONE (SHEET 14)

- NOTES**
1. BEFORE STARTING CONSTRUCTION CONTRACTOR MUST CHECK WITH UTILITIES FOR LOCATIONS OF EXISTING STRUCTURES WHETHER OR NOT INDICATED ON PLANS
 2. FOR UTILITY LEGEND SEE STD. DRAWING C-902-A

ST. JOSEPH ST. 50' WD.
ASPH. ON BRICK

EX. 15" X 20" SEWER SHALL BE BULKHEADED & FILLED UNDER NEW RIGHT-OF-WAY

EX. 22" SEWER IN MACK SHALL BE BULKHEADED & FILLED AFTER EX. PAVEMENT IS REMOVED & NEW SEWER IS INSTALLED

EX. 15" X 20" SEWER SHALL BE BULKHEADED & FILLED UNDER NEW RIGHT-OF-WAY

EX. 3'-0" X 4'-0" SEWER IN RIOPELLE SHALL BE BULKHEADED AT NORTH SIDE OF MANHOLE

EX. 15" X 20" SEWER ENDS & FILLED UNDER NEW RIGHT-OF-WAY

CALL MISS DIG 48 HOURS PRIOR TO CONSTRUCTION 647-7344

NO.	DESCRIPTION	DATE
1	REVISIONS LOCATED BY COORDINATES ON SHEET	
2		
3		
4		
5		
6		
7		
8		
9		
10		
11		

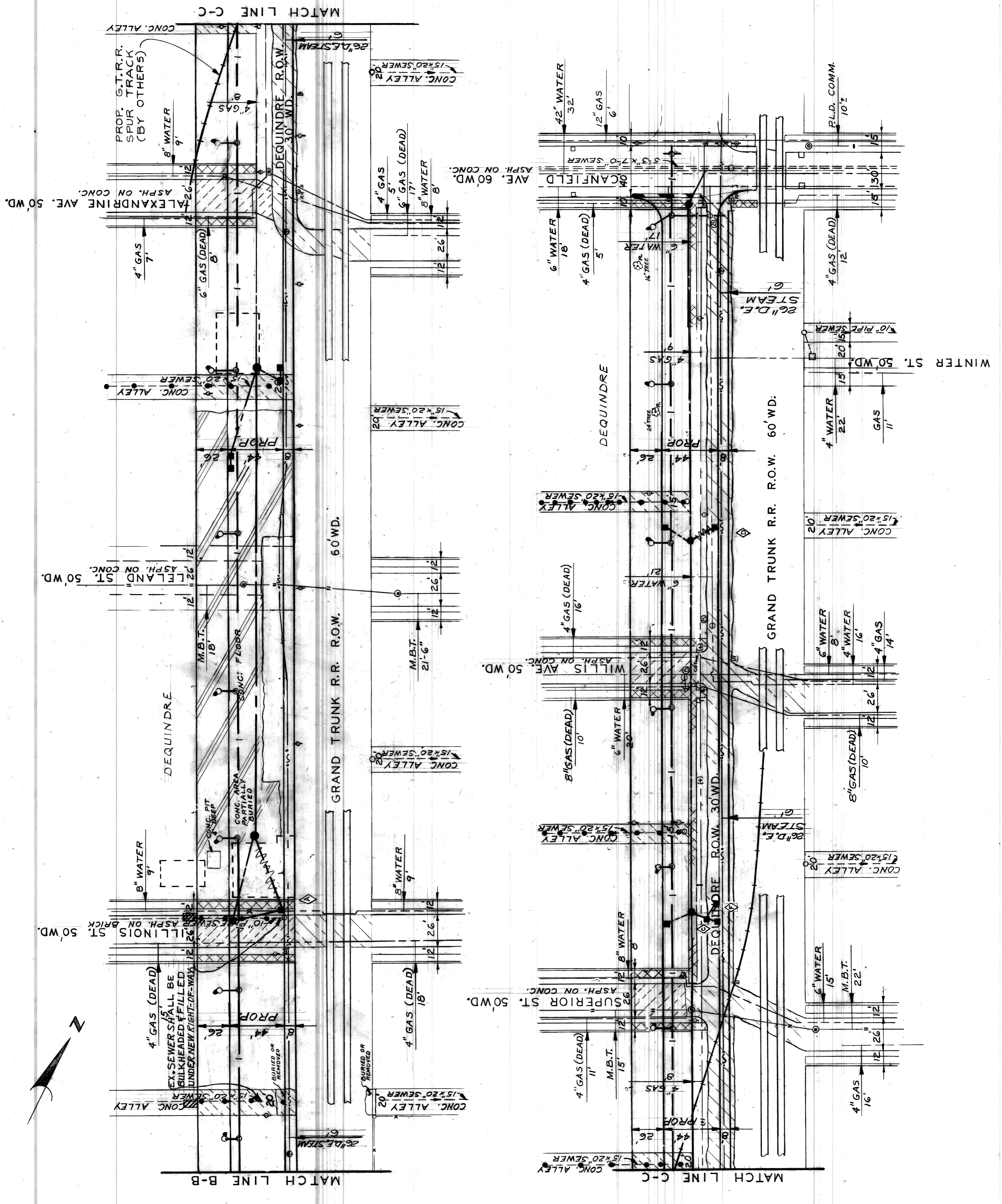
DESIGNED BY	DESIGNED BY	DESIGNED BY	DESIGNED BY
DRAWN BY	DRAWN BY	DRAWN BY	DRAWN BY
TRACED BY	TRACED BY	TRACED BY	TRACED BY
CHECKED BY	CHECKED BY	CHECKED BY	CHECKED BY

APPROVED:	APPROVED:	APPROVED:	APPROVED:
<i>William L. Talley</i>	<i>R. Rosik</i>	<i>L. Iston</i>	
ENGINEER OF STREETS			

REFERENCE DRAWINGS	CONTRACT NO.	SHEET 7 OF 56 SHEETS
	PW 6691	
	ASSIGNMENT NO.	90-14-08
		DATE APRIL, 1990

CITY OF DETROIT
CITY ENGINEERING DEPARTMENT
BUREAU OF STREETS AND HIGHWAYS

UTILITY AND REMOVAL



FOR NOTES AND LEGEND SEE SHEET 1

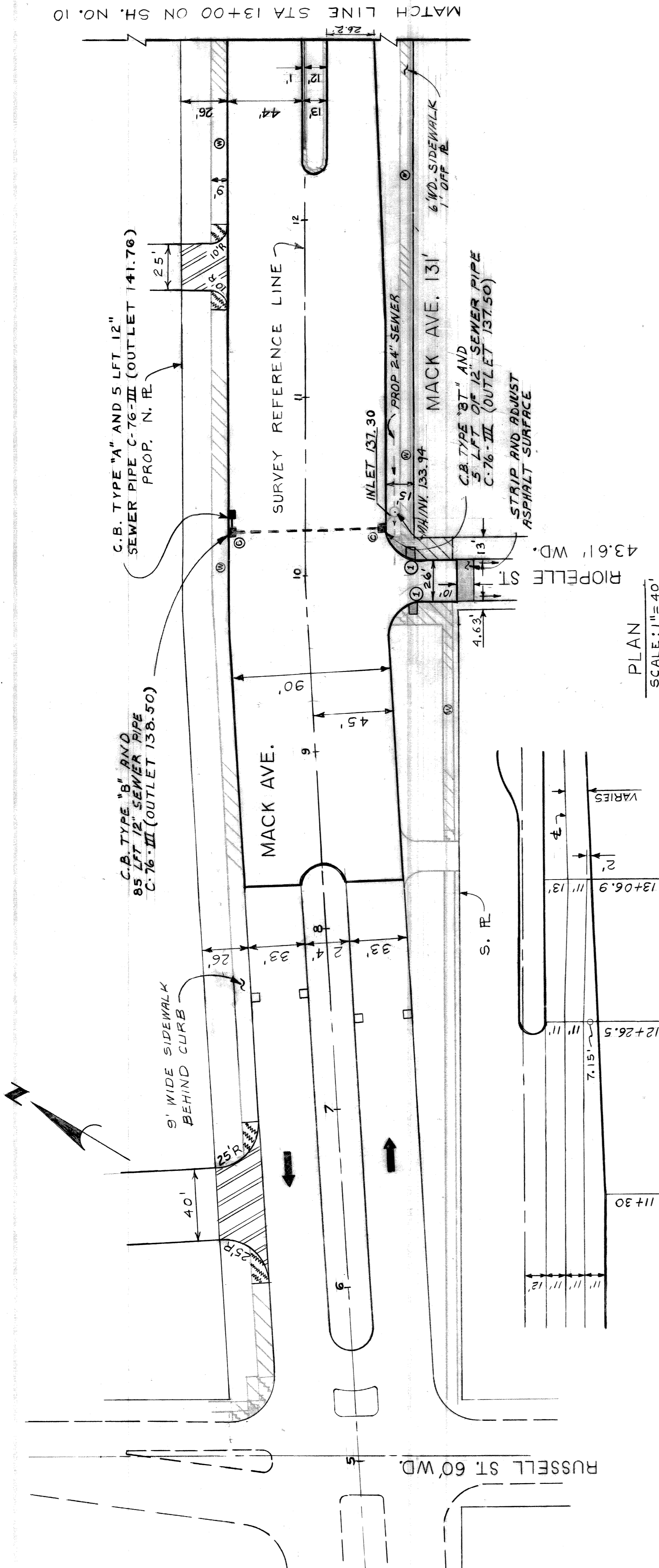
REVISIONS LOCATED BY COORDINATES ON SHEET REVISIONS LOCATED BY COORDINATES ON SHEET REVISIONS LOCATED BY COORDINATES ON SHEET REVISIONS LOCATED BY COORDINATES ON SHEET	DESCRIPTION DESCRIPTION DESCRIPTION DESCRIPTION	DATE DATE DATE DATE	DRAWN DRAWN DRAWN DRAWN	CHECKED BY CHECKED BY CHECKED BY CHECKED BY	TRACED BY TRACED BY TRACED BY TRACED BY	DRAWN BY R Rosik 11/10/88	DESIGNED BY DESIGNED BY	APPROVED: <i>William H. Talley</i> ENGINEER OF STREETS	CITY OF DETROIT CITY ENGINEERING DEPARTMENT BUREAU OF STREETS AND HIGHWAYS	PAVING OF MACK FROM ALLEY WEST OF RIOPELLE TO GRAND TRUNK R.R. ALSO DEQUINDRE FROM MACK TO CANFIELD, AND MISCELLANEOUS CONSTRUCTION FOREST PARK REHABILITATION PROJECT	UTILITY AND REMOVAL
1	2	3	4	5	6	7	8	9	10	11	12

SHEET 8 OF 56 SHEETS
 CONTRACT NO. PW 6691
 ASSIGNMENT NO. 90-14-08
 DATE APRIL, 1990

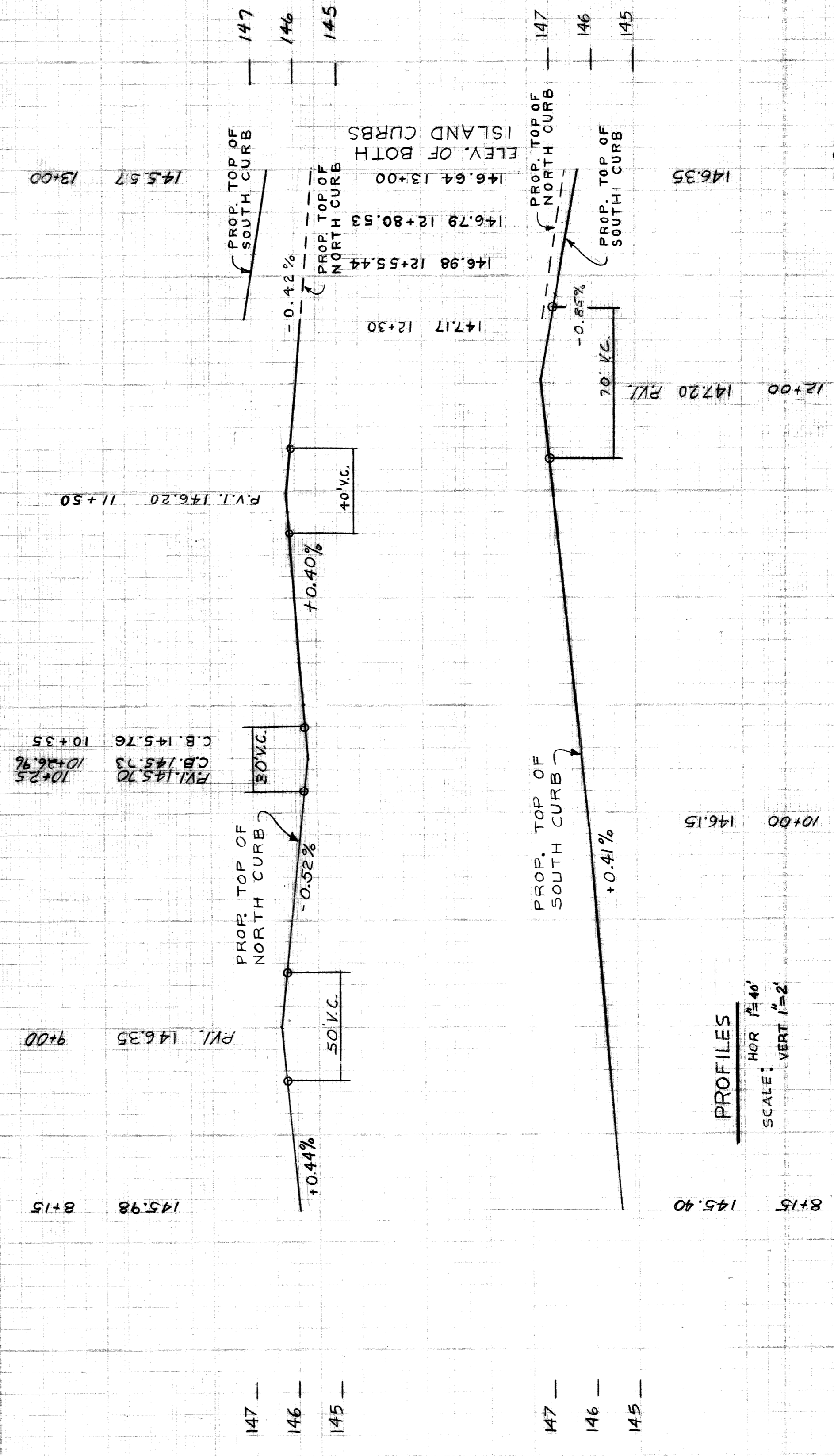
BENCH MARKS
 HYD E-SIDE RUSSELL 1.80' N OF MACK EL. 148.87
 HYD E-SIDE RUSSELL 1.80' N OF MACK EL. 148.50
 R.R. SPK IN U. POLE ±150' S OF MACK AVE ±50' W PL-ORLEANS EL. 147.50
 R.R. SPK U. POLE E. SIDE RR. ROW AT STA. 11+50N EL. 149.83
 F.B.M. # 40-350 LELAND BRG. # 1-75 AT N. B.D. SERVICE DR. EL. 149.10

- CONSTRUCTION LEGEND**
- ① CONSTRUCT 4" STD. SIDEWALK
 - ② CONSTRUCT 6" STD. SIDEWALK
 - ③ CONSTRUCT SIDEWALK RAMP TYPE I
 - ④ CONSTRUCT CATCH BASIN
 - ⑤ CONSTRUCT SEWER PIPE
 - ⑥ CONSTRUCT STD. SEWER MANHOLE
 - ⑦ CONSTRUCT SIDEWALK RAMP TYPE III
 - ⑧ PROPOSED RAIL-ROAD SPIKE TRACK
 - ⑨ CONSTRUCT 9" UNIFORM UNREINF. CONC. PAVEMENT W/UNREINF. CONC. CURB
 - ⑩ STRIP & ADJUST ASPHALT SURFACE
 - ⑪ CONSTRUCT 8" CONCRETE DRIVEWAY

- CONSTRUCTION NOTES:**
1. CONSTRUCT SIDEWALK AT LOCATIONS SHOWN OR AS DIRECTED BY THE ENGINEER. PAVEMENT TO BE 9" UNIFORM REINFORCED CONCRETE WITH INTEGRAL CURB UNLESS OTHERWISE NOTED.
 2. ALL SIDEWALK RAMP TYPES WILL BE TYPE III UNLESS OTHERWISE NOTED.
 3. FOR TYPICAL SECTIONS SEE SHEET # 6
 4. FOR QUANTITIES SEE SHEET # 17
 5. SEE ALIGNMENT ON SHEETS # 3-5
 6. FOR LAWN MOWER RAMPS SEE STREET PAVING STANDARD DRAWING # C-5239
 7. EXACT LOCATIONS OF PROPOSED DRIVEWAYS TO BE DETERMINED IN THE FIELD BY THE ENGINEER.



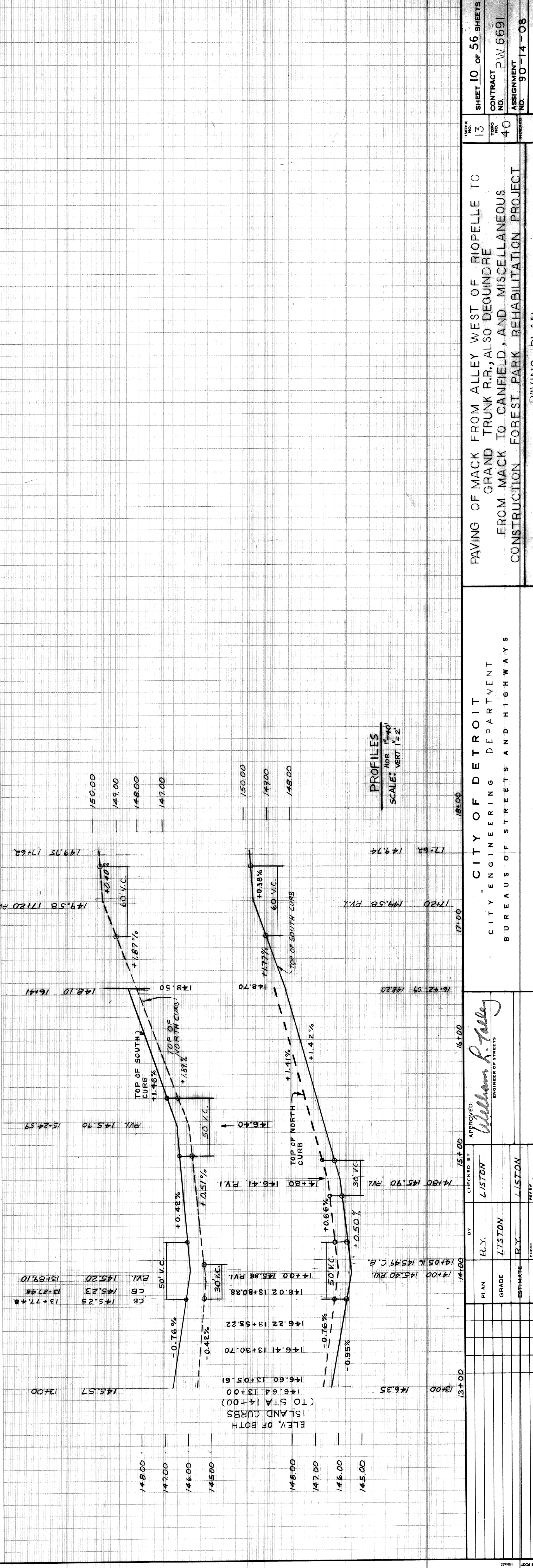
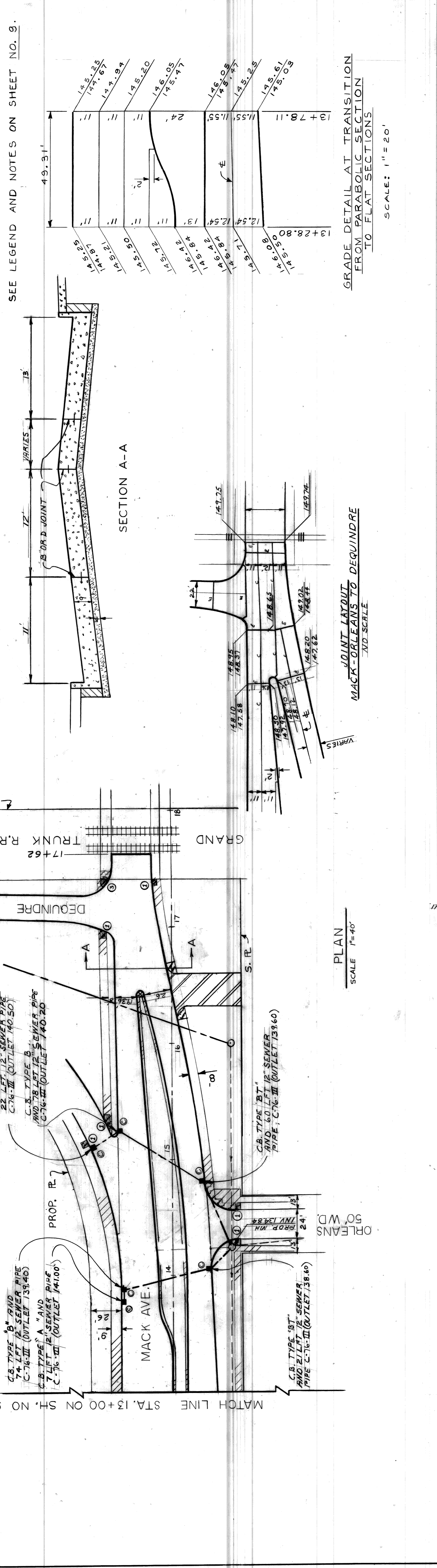
PLAN SCALE: 1" = 40'
 JOINT LAYOUT EASTBOUND MACK - RIPELLE TO ORLEANS SCALE: 1" = 40'



PROFILES SCALE: HOR 1" = 40' VERT 1" = 2'

DESCRIPTION	DATE	BY	CHECKED BY	APPROVED:	CITY OF DETROIT CITY ENGINEERING DEPARTMENT BUREAUS OF STREETS AND HIGHWAYS	PAVING OF MACK FROM ALLEY WEST OF RIPELLE TO GRAND TRUNK P. ALSO DEQUINRE FROM MACK TO CANFIELD, AND MISCELLANEOUS CONSTRUCTION FOREST PARK REHABILITATION PROJECT	SHEET 9 OF 56 SHEETS CONTRACT NO. PW 6691 ASSIGNMENT NO. 90-14-08 DATE APRIL, 1990
REVISIONS		R.Y. LISTON	L. LISTON	William S. Talley ENGINEER OF STREETS			
		R.Y. LISTON	L. LISTON				
		R.Y. LISTON	L. LISTON				

MARKS: BENCH, ELEV
 R.R. SPK U. POLE E. SIDE R.R. ROW AT STA 14+50.00 EL. 149.83
 HYD N. SIDE MACK ±50' E. OF R.R. TRACK EL. 150.67
 SEE LEGEND AND NOTES ON SHEET NO. 9.



DESCRIPTION	DATE	BY	CHECKED BY	APPROVED BY
REVISIONS				William S. Tally
		PLAN	BY R.Y. LISTON	
		GRADE	BY R.Y. LISTON	
		ESTIMATE	BY R.Y. LISTON	
		FINAL	BY R.Y. LISTON	
			REVIEW	TALLEY

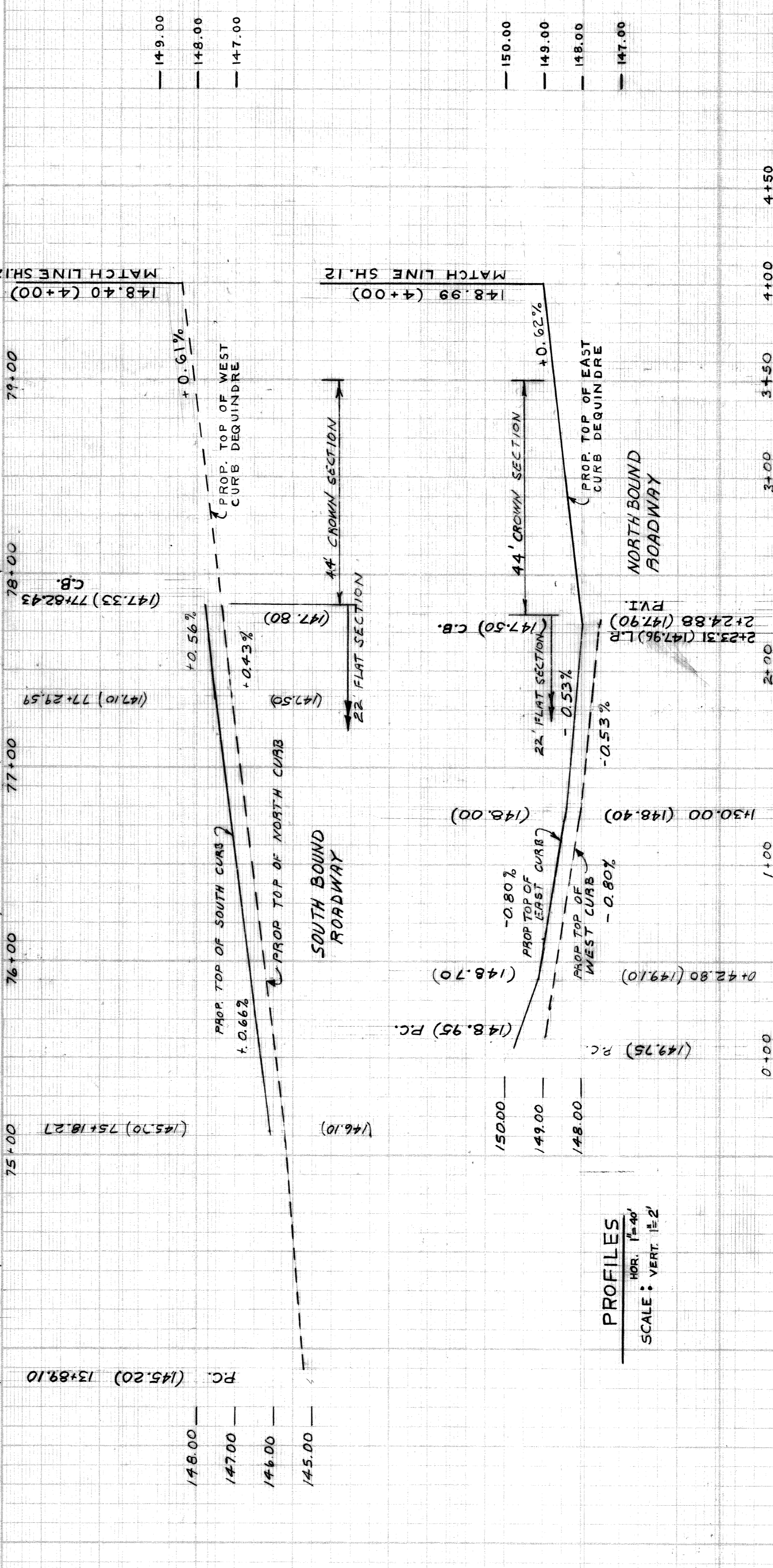
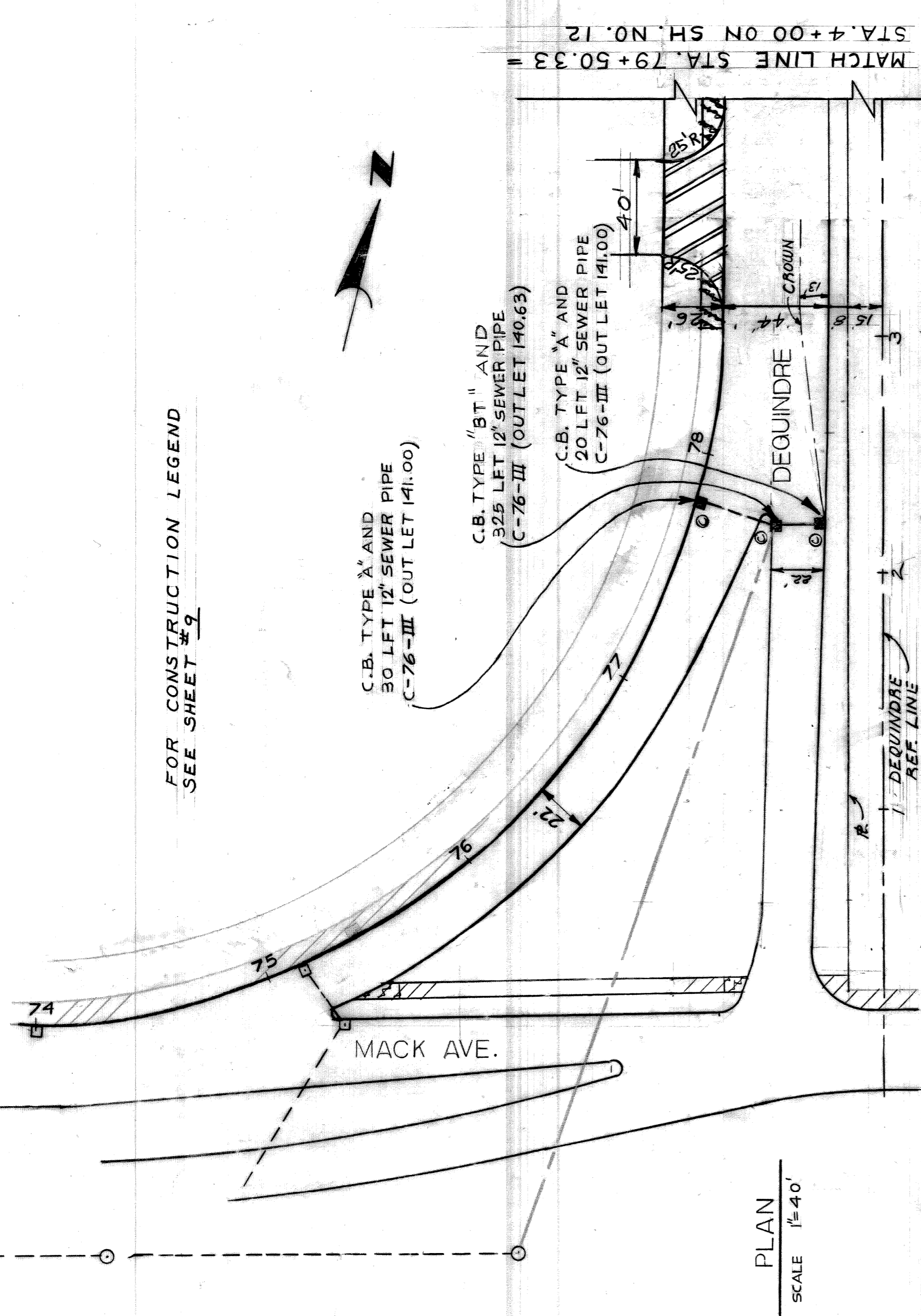
BOOK L.L. 40.D (U) LEVEL JULY-82

NOTE - FOR SYMBOLS (C) ETC. SEE STANDARD DETAIL DRAWING NO. C-471

CONTRACT NO. PW 6691

DATE APRIL, 1990

BENCH MARKS



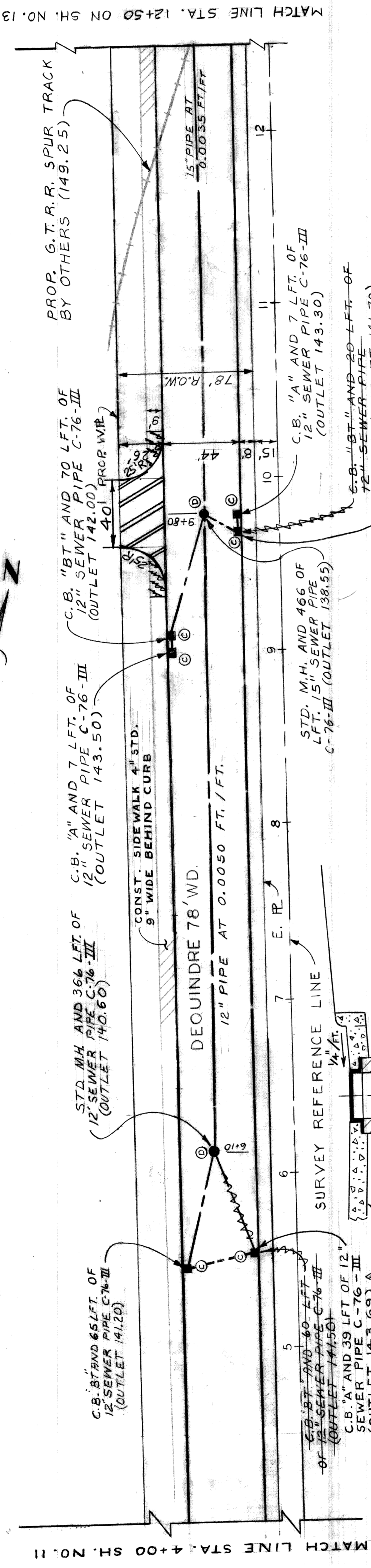
DATE	2-10-84	DESCRIPTION	REVISIONS
BY	R.Y. LISTON	PLAN	
CHECKED BY	LISTON	GRADE	
APPROVER	William S. Talley	ESTIMATE	
ENGINEER OF STREETS		FINAL	
CITY OF DETROIT			
CITY ENGINEERING DEPARTMENT			
BUREAU OF STREETS AND HIGHWAYS			
PROJECT	PAVING OF MACK FROM ALLEY WEST OF RIOPELLE TO GRAND TRUNK R.R., ALSO DEQUINDRE FROM MACK TO CANFIELD, AND MISCELLANEOUS CONSTRUCTION FOREST PARK REHABILITATION PROJECT		
INDEXED	40	SHEET	11 OF 56 SHEETS
NO.	40	CONTRACT	PW 6691
ASSIGNMENT	NO. 90-14-08	DATE	APRIL, 1990

BOOK LL 140 D (J) LEVEL JULY - 82 DATE
 BEFORE STARTING CONSTRUCTION CONTRACTOR
 MUST CHECK WITH UTILITIES DEPARTMENT
 STRUCTURES SHOWN ARE NOT INDICATED ON P.L.S.

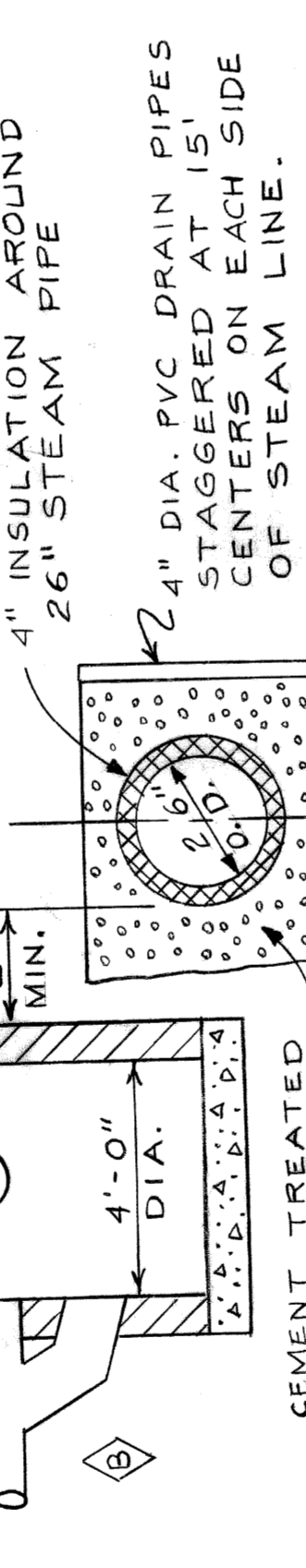
SCALE
 HORIZONTAL 1" = 40'
 VERTICAL 1" = 20'

MARKS	ELEV
RR, SPK ON U. POLE E. SIDE RR. ROW. AT STA. 11+50N	149.83
SPK IN POLE E. SIDE RR. ROW. AT STA. 9+20N	149.51
PK IN POLE W. SIDE RR. ROW. AT STA. 9+35	151.40
SPK IN POLE E. SIDE RR. ROW. AT STA. 11+65	150.44
SPK IN POLE E. SIDE RR. ROW. AT STA.	152.63
SPK IN POLE N. OF N. CURB CANFIELD-	153.51
±20' E.R.R. ROW.	

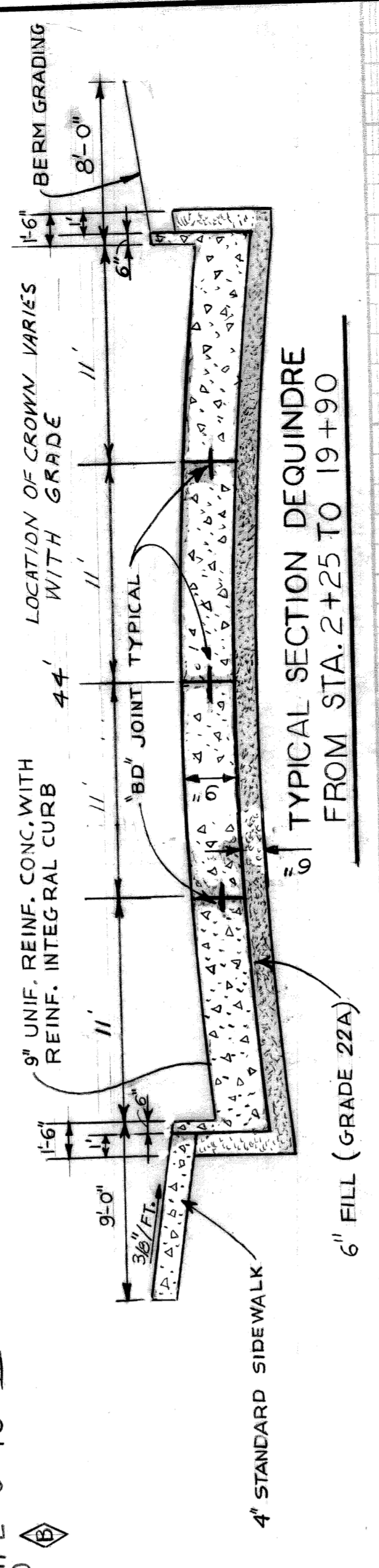
FOR CONSTRUCTION LEGEND SEE SHEET 9



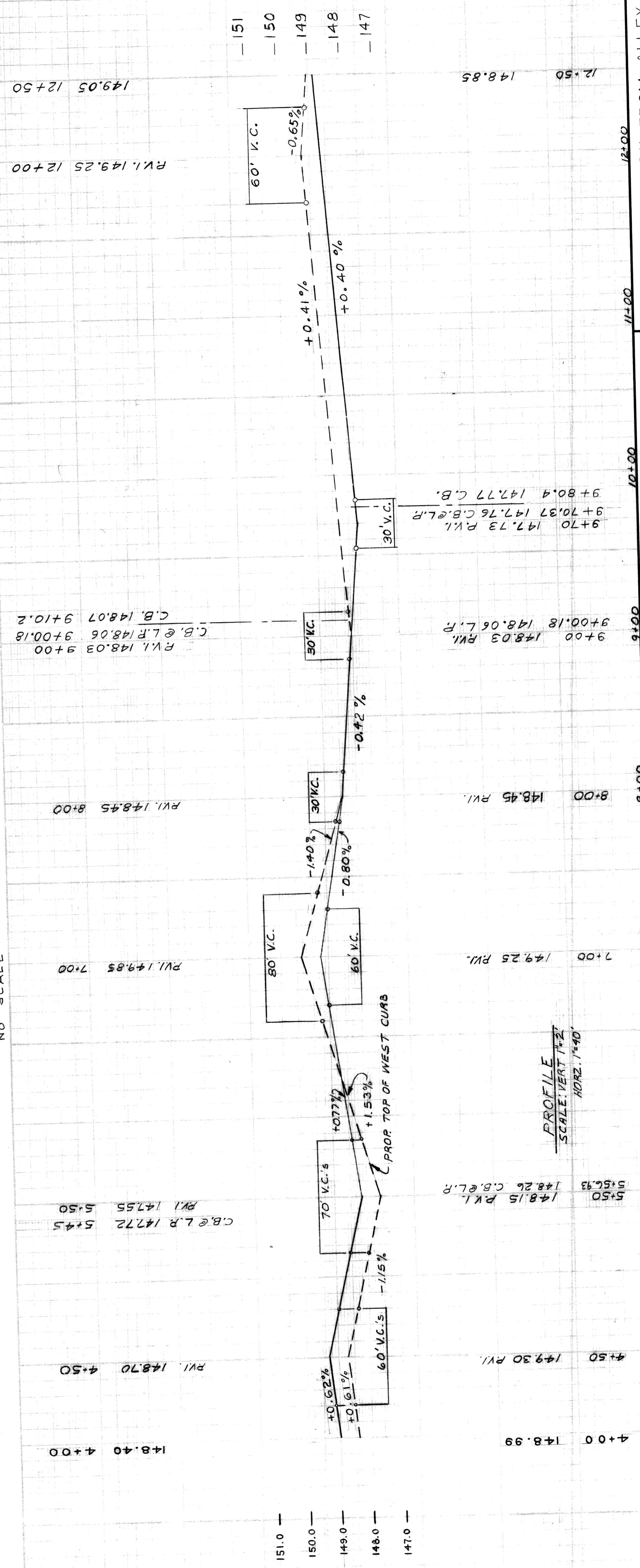
PLAN SCALE 1"=40'



DETAIL OF CATCH BASIN WITH OFFSET CORBEL (SEE ALSO CITY OF DETROIT PAVING STANDARDS, DRAWING NO. C-5028) NO SCALE



TYPICAL SECTION DEQUINDRE FROM STA. 2+25 TO 19+90



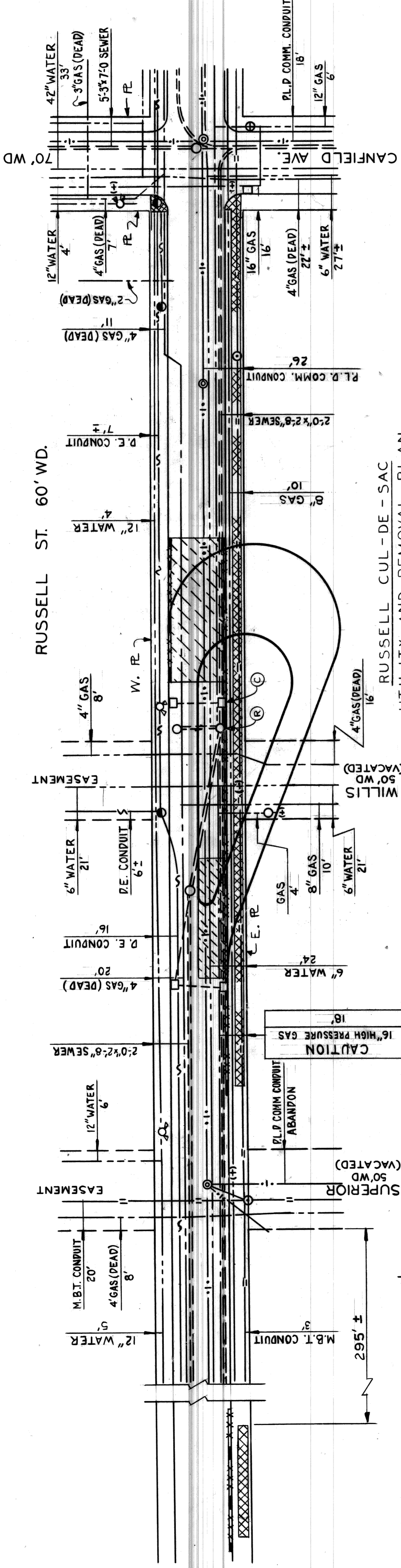
PROFILE SCALE: VERT 1"=2' HORIZ. 1"=40'

REVISED PROP. CATCH BASIN TYPE	BY	CHECKED BY	APPROVED BY	CITY OF DETROIT	PAVING PLAN	NO. 13	SHEET 12 OF 56 SHEETS
OUTLET ELEVATION & LENGTH	R.Y.	LISTON	William S. Talley	CITY ENGINEERING DEPARTMENT	GRAND TRUNK R.R., ALSO DEQUINDRE FROM MACK TO CANFIELD, AND MISCELLANEOUS CONSTRUCTION FOREST PARK REHABILITATION PROJECT	40	CONTRACT PW 6691
DIRECTION OF PROP. SEWER AS SHOWN	L.Y.	LISTON		BUREAU OF STREETS AND HIGHWAYS			ASSIGNMENT NO. 90-14-08
MODIFIED PROP. CATCH BASIN AS SHOWN	R.Y.	LISTON					DATE APRIL, 1990
INSERTED DETAIL	NW						
DESCRIPTION							
REVISIONS							

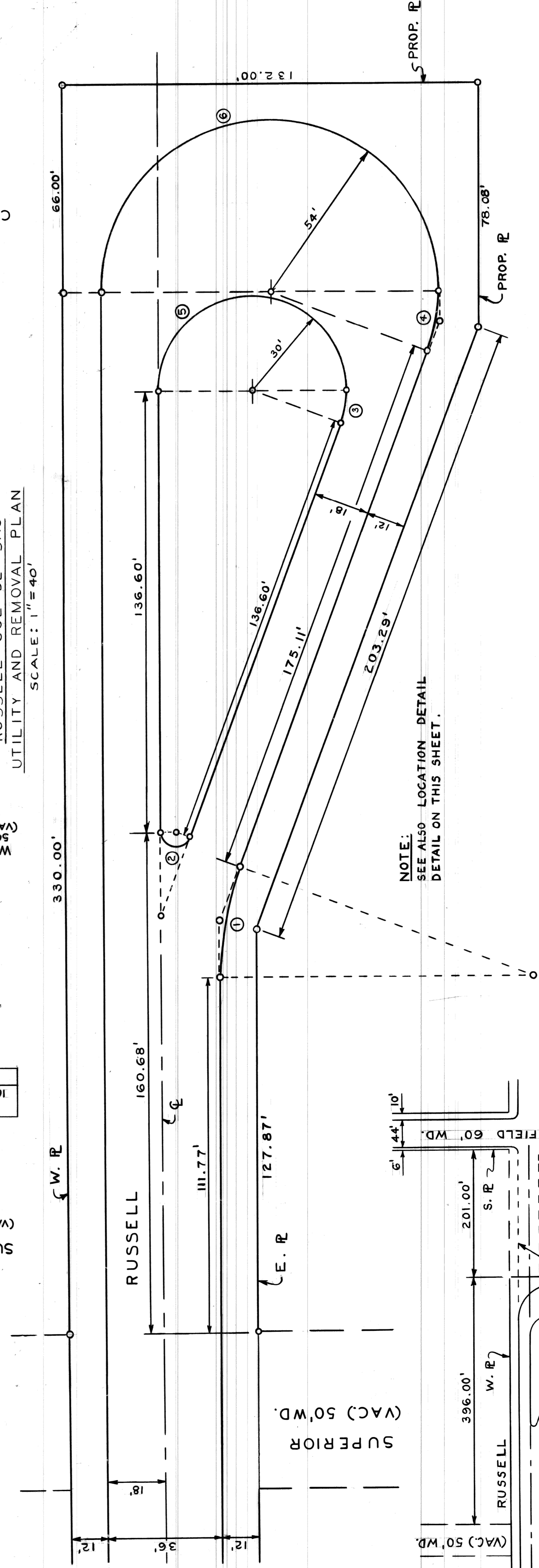
BENCH MARKS

P.B.M. # 40-350 LELAND BRG. ± I-75 @ N. BD.
 SER. DR. EL. 149.10
 C.B.M. HYD. S.S. CANFIELD ± 20' W. OF R
 RUSSELL EL. 152.77
 C.B.M. HYD. W.S. RUSSELL ± 585' S. OF R
 CANFIELD EL. 150.18
 P.B.M. # 40-253 N.E. COR. ST. AUBIN AND
 ALEXANDRINE EL. 145.19

NOTE:
 FOR REMOVAL LEGEND SEE SHEET NO. 7.



RUSSELL CUL-DE-SAC
 UTILITY AND REMOVAL PLAN
 SCALE: 1" = 40'



ALIGNMENT OF RUSSELL CUL-DE-SAC
 SCALE: 1" = 20'

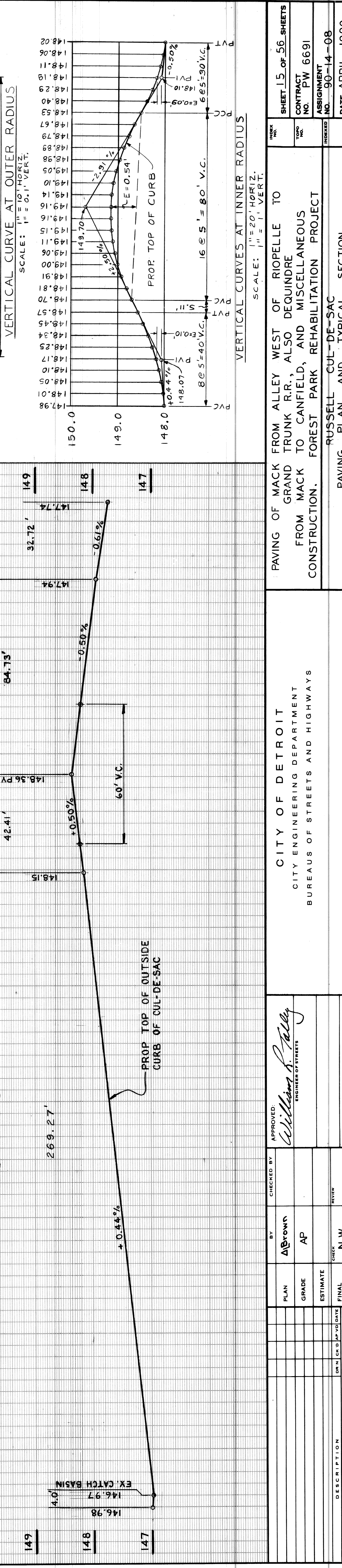
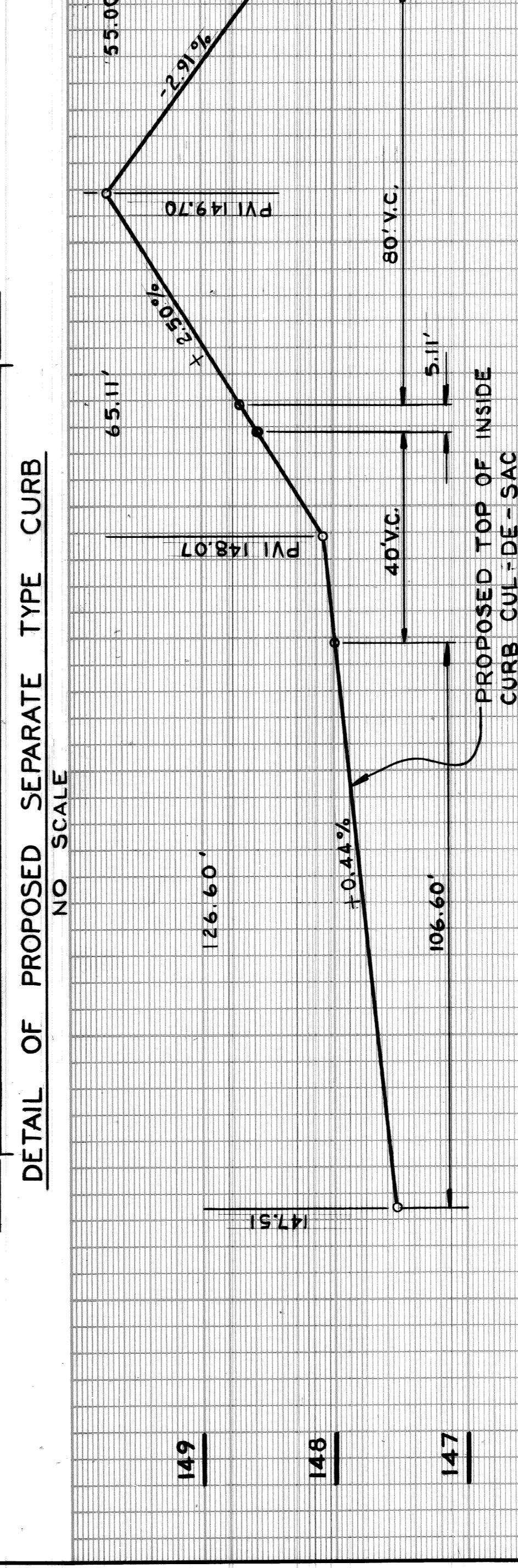
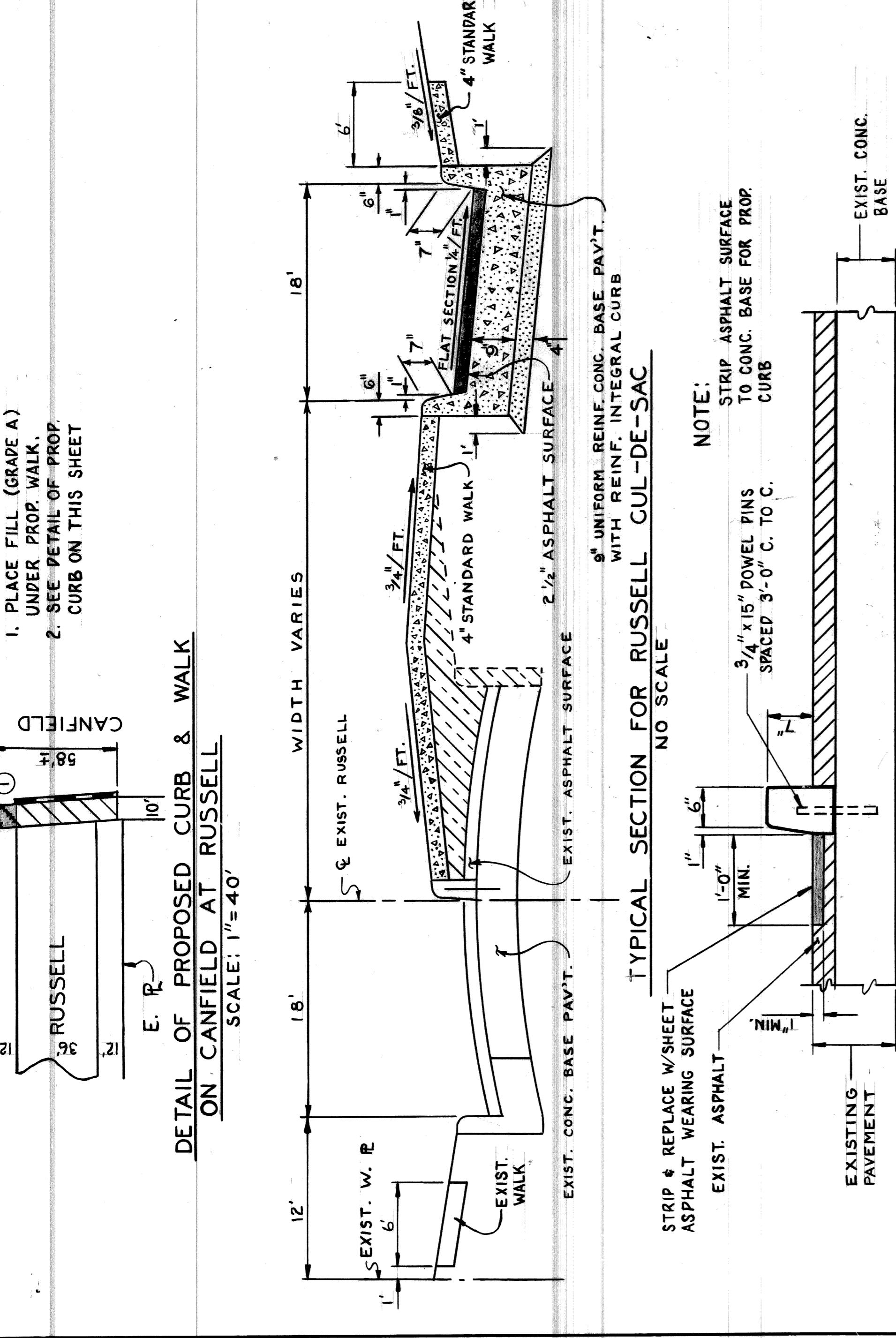
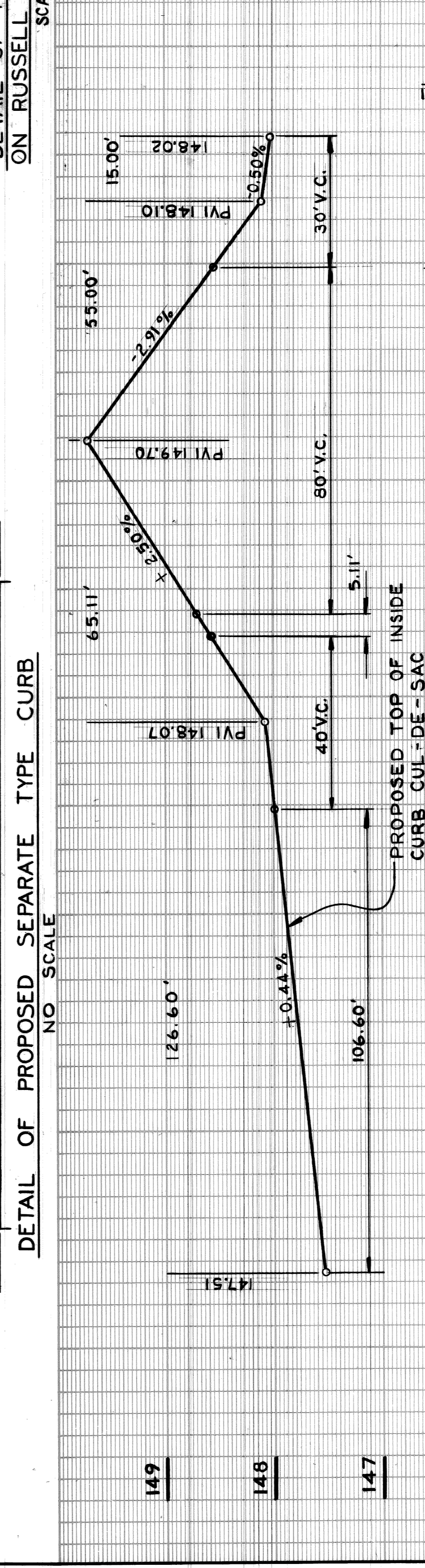
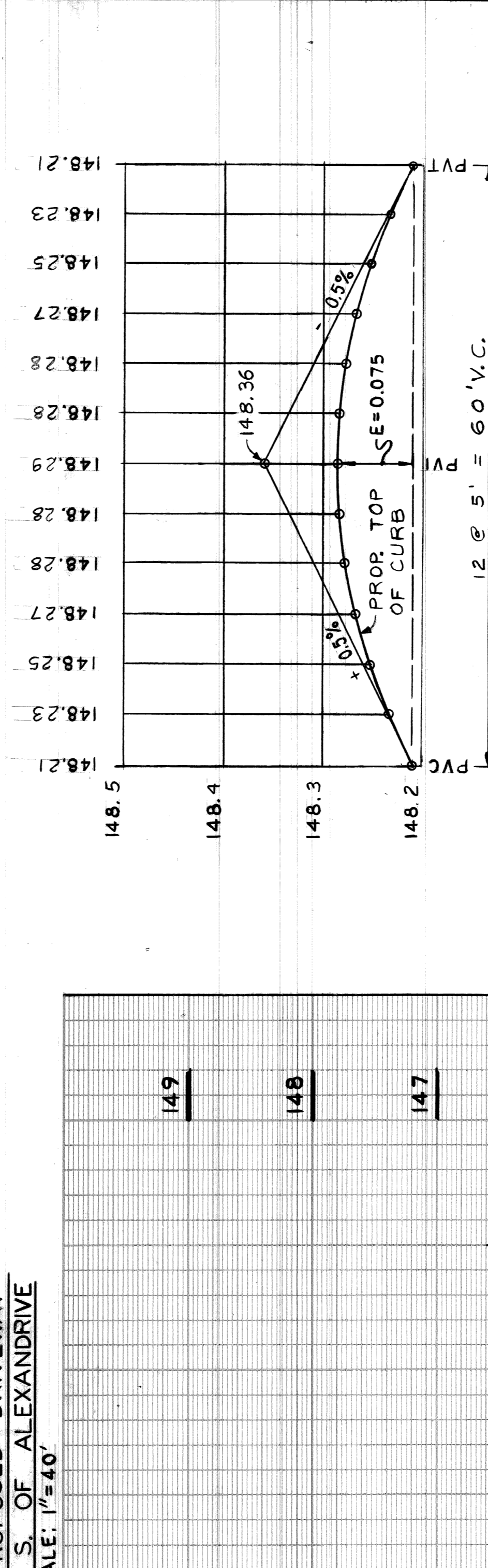
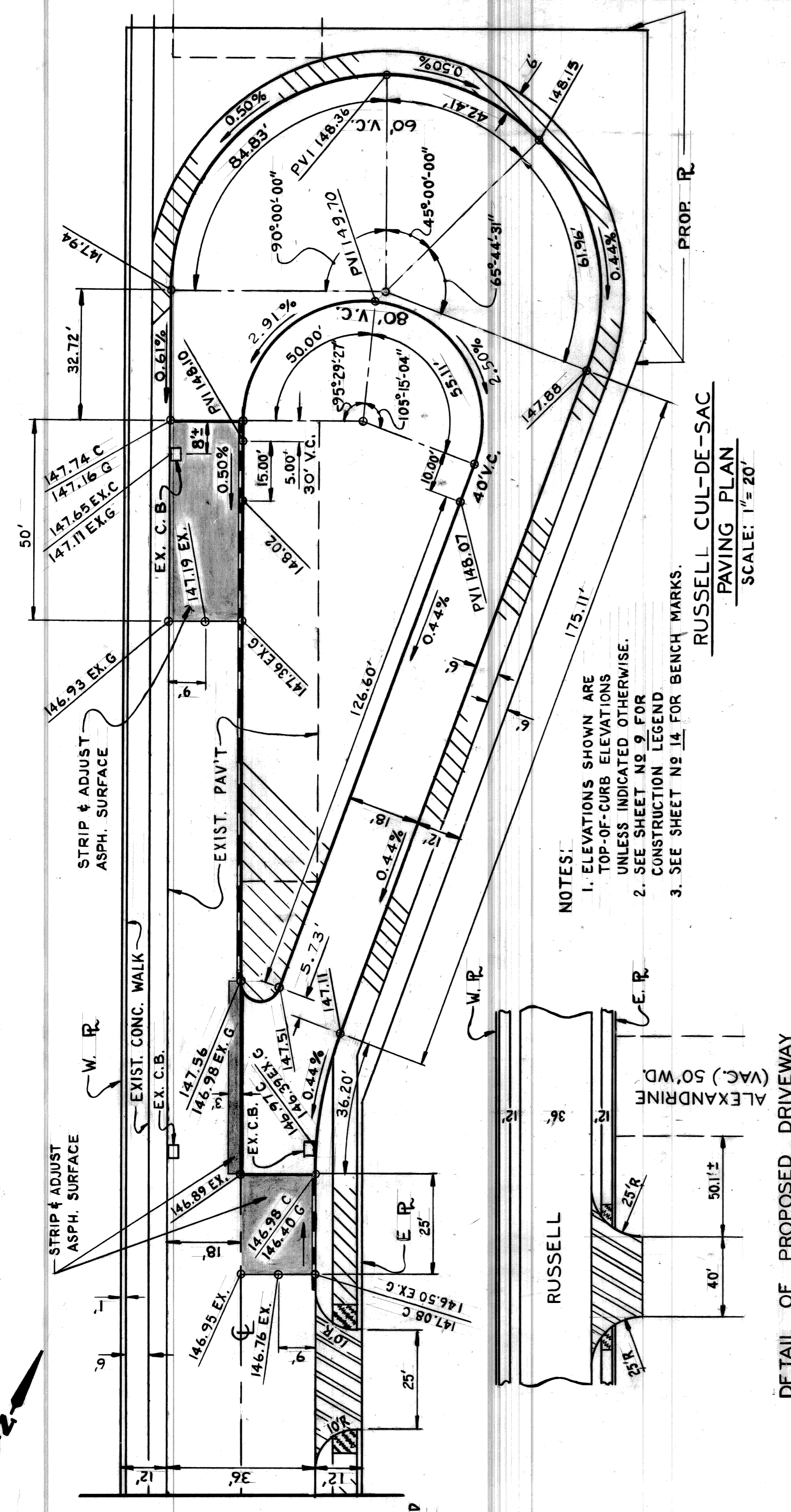
CURVE DATA

Curve No.	Δ	R	T	L	C
No 1	20° - 44' - 31"	100.00'	18.30'	36.20'	71.22'
No 2	159° - 15' - 29"	5.00'	27.32'	13.90'	9.84'
No 3	20° - 44' - 31"	30.00'	5.49'	10.86'	10.80'
No 4	180° - 00' - 00"	54.00'	9.88'	19.55'	19.44'
No 5	180° - 00' - 00"	30.00'	94.25'	54.00'	169.65'
No 6	180° - 00' - 00"	54.00'	54.00'	54.00'	169.65'

NOTE:
 SEE ALSO LOCATION DETAIL
 DETAIL ON THIS SHEET.

RUSSELL CUL-DE-SAC
 LOCATION DETAIL
 SCALE 1" = 100'

DESIGNED BY	M. K.	APPROVED	William R. Tally ENGINEER OF STREETS	CITY OF DETROIT	PAVING OF MACK FROM ALLEY WEST OF RIOPELLE TO
DRAWN BY	ABROWN			CITY ENGINEERING DEPARTMENT	GRAND TRUNK RR., ALSO DEQUINDRE
TRACED BY				BUREAUS OF STREETS AND HIGHWAYS	FROM MACK TO CANFIELD, AND MISCELLANEOUS
CHECKED BY	N.W.				CONSTRUCTION FOREST PARK REHABILITATION PROJECT
DESCRIPTION					RUSSELL CUL-DE-SAC - UTILITY AND REMOVAL
DATE					PLAN AND ALIGNMENT
REVISIONS LOCATED BY COORDINATES ON SHEET					
CONTRACT NO.	PW 6691	SHEET 14 OF 56 SHEETS			
ASSIGNMENT NO.	90-14-06				
DATE	APRIL, 1990				



NO.	DATE	DESCRIPTION	REVISIONS

