

NOTES:

- ON CLARK AVE. BETWEEN JEFFERSON AND FORT REMOVE ALL CURB, SIDEWALKS, AND DRIVEWAYS ON BOTH SIDES UNLESS DIRECTED BY THE ENGINEER. REPLACE CURBS, SIDEWALKS AND DRIVEWAYS AS SHOWN ON THE PLAN OR AS DIRECTED BY THE ENGINEER.
- FOR SEPARATE TYPE CURB MODIFIED SEE STANDARD DRAWING NO. C-4381.
- RESURFACE CLARK AVE. WITH A MINIMUM OF 3 1/2" BITUMINOUS CONCRETE UNLESS OTHERWISE DIRECTED BY THE ENGINEER. FOR TYPICAL CROSS SECTIONS SEE SHEET #2
- FOR RAMP DETAIL SEE STANDARD DETAIL DRAWING NO. 34.
- ALL CURB HEIGHTS ARE 7" UNLESS OTHERWISE NOTED.
- ON CLARK AVE. BETWEEN JEFFERSON AND FORT REMOVE BITUMINOUS SURFACE ENTIRE WIDTH AT AN AVERAGE DEPTH OF 4".
- ALL DRIVEWAY RADII ARE 10' UNLESS OTHERWISE NOTED.
- FOR DETAILED QUANTITIES SEE SHEET #2

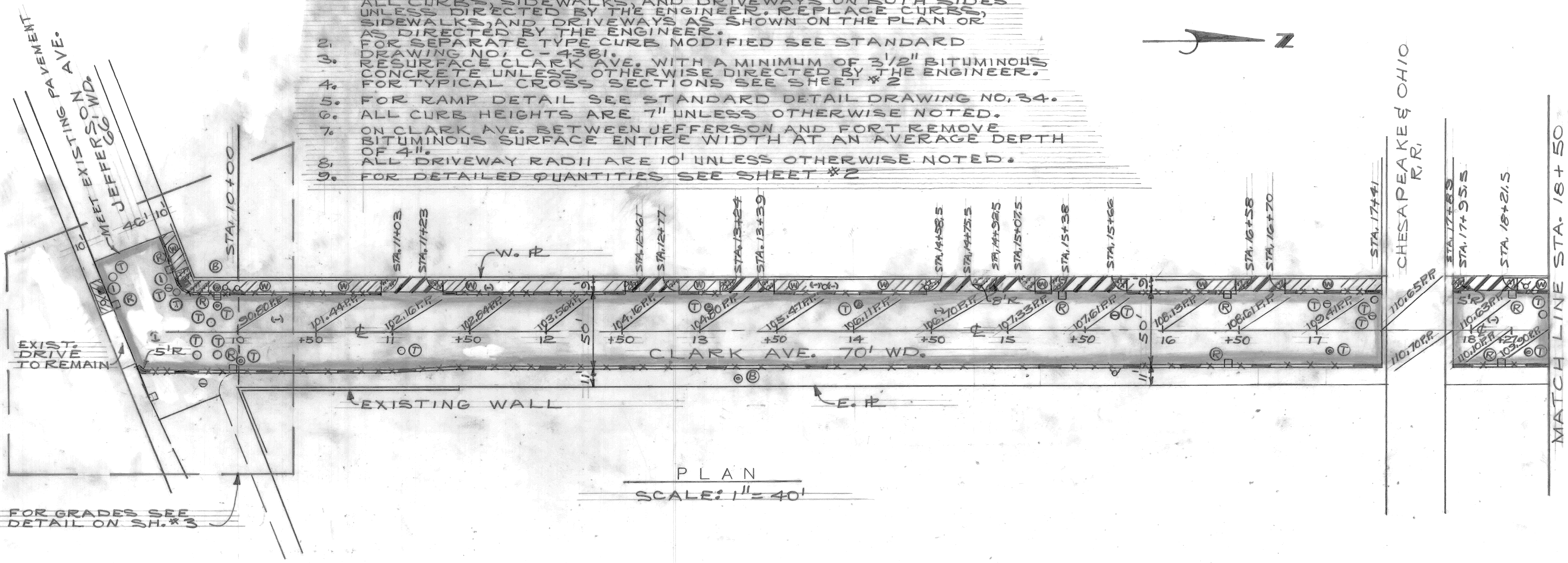
SCALE: HORIZONTAL 1" = 40' VERTICAL 1" = 4'
 BOOK: 11-19 PG. 1-11-84
 DATE: 1-11-84
 BEFORE STARTING CONSTRUCTION CONTRACTOR MUST CHECK WITH UTILITIES FOR LOCATIONS OF EXISTING STRUCTURES WHETHER OR NOT INDICATED ON PLANS.

NOTE - FOR SYMBOLS (A) ETC. SEE STANDARD DETAIL DRAWING NO. C-411

BENCH MARKS	ELEV
P.B.M. #18-250 N.E. COR. SCOTTEN & JEFFERSON	EL. 101.54
C.B.M. #HYD. 100'± W. SCOTTEN N.S. JEFFERSON	EL. 104.21
C.B.M. #HYD. N.W. COR. JEFFERSON & CLARK	EL. 103.65
C.B.M. #HYD. *140 CLARKS. END W/S	EL. 109.41
C.B.M. #HYD. 40'± N.R.R. W/S	EL. 112.87
C.B.M. #HYD. *105 CLARK W/S	EL. 110.51
C.B.M. #HYD. N.W. COR. FORT & CLARK	EL. 109.37

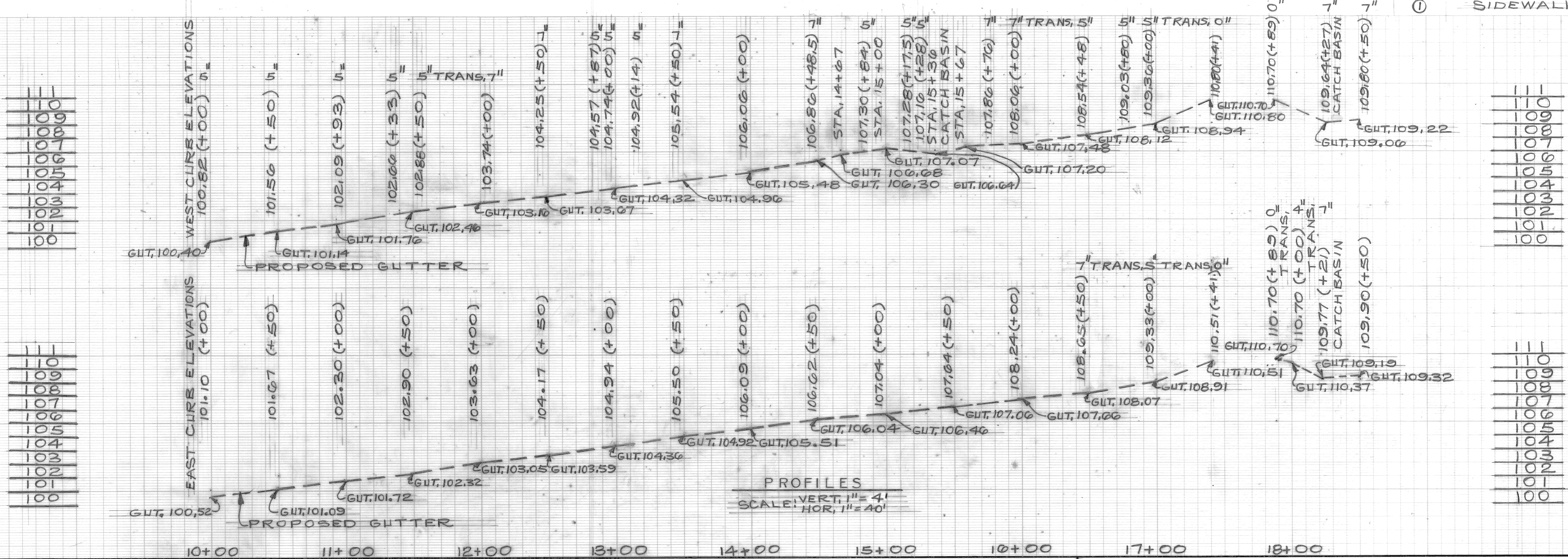
CONSTRUCTION LEGEND

- RESURFACING AREA
- SIDEWALK - 4" STANDARD
- SIDEWALK - 6" STANDARD
- DRIVEWAY - 8" STANDARD
- 9" REINFORCED CONCRETE BASE PLUS 3 1/2" ASPHALT
- SEPARATE TYPE CURB NON-REINFORCED
- RESET EXISTING CATCH BASINS
- RESET EXISTING MANHOLES
- ADJUST EXISTING MANHOLES
- ADJUST EXISTING CATCH BASINS
- SIDEWALK RAMP TYPE III
- SIDEWALK RAMP TYPE I



PLAN SCALE: 1" = 40'

FOR GRADES SEE DETAIL ON SH. #3



PROFILES SCALE: VERT. 1" = 4' HOR. 1" = 40'

NO.	DESCRIPTION	DATE

BY: JONES	CHECKED BY: D.P.U.	APPROVED: William R. Kelly
GRADE: D.P.U.	ESTIMATE: D.P.U.	FINAL: TAKEY

CITY OF DETROIT
 CITY ENGINEERING DEPARTMENT
 BUREAUS OF STREETS AND HIGHWAYS
 FOR

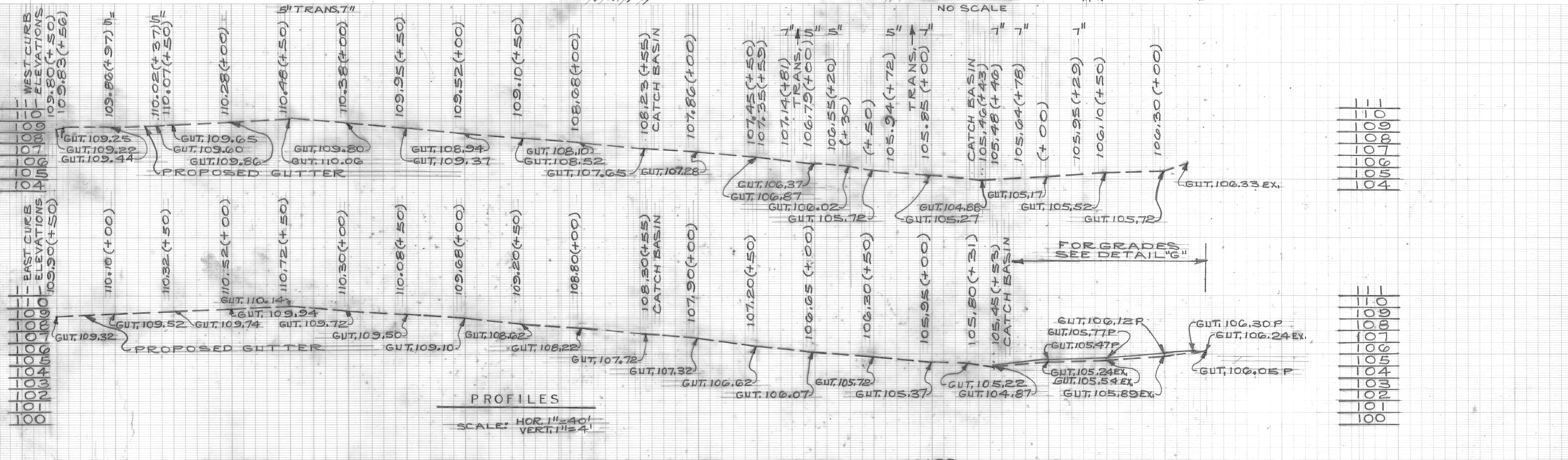
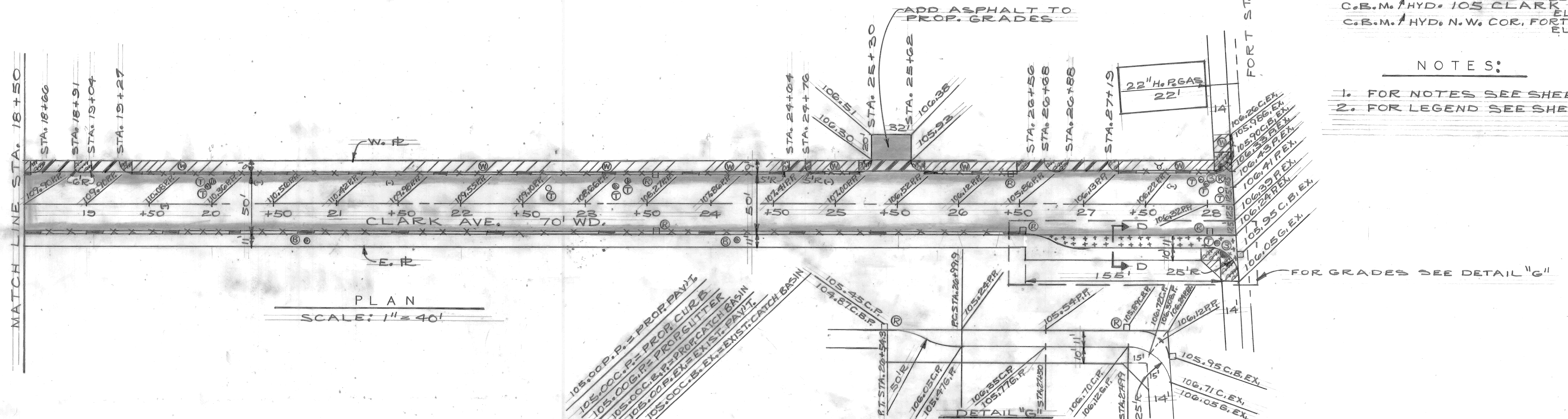
PORT IMPROVEMENTS IN THE AREA BOUNDED BY
 W - CLARK E - SCOTTEN
 S - JEFFERSON N - FORT
 PLAN

INDEX NO. 41	SHEET 5 OF 6 SHEETS
CONTRACT NO. 10	PW 6690
ASSIGNMENT NO.	83-14-19
DATE	3-26-84

BENCH MARKS	ELEV
P.B.M. *18-250 N.E. COR. SCOTTEN & JEFFERSON	EL. 101.94
C.B.M. / HYD. 100'± W. SCOTTEN 1/3 JEFFERSON	EL. 104.21
C.B.M. / HYD. N.W. COR. JEFFERSON & CLARK	EL. 103.05
C.B.M. / HYD. 140 CLARK S. END W/S	EL. 109.41
C.B.M. / HYD. 40'± N. R.R. W/S	EL. 112.87
C.B.M. / HYD. 105 CLARK W/S	EL. 110.51
C.B.M. / HYD. N.W. COR. FORT & CLARK	EL. 109.37

NOTES:

- FOR NOTES SEE SHEET #5
- FOR LEGEND SEE SHEET #5



NO.	DESCRIPTION	DATE

BY	JONES	CHECKED BY	W. G. U.	APPROVED	Williams L. Kelly
GRADE	W. G. U.	ESTIMATE	W. G. U.	FINAL	TALES

CITY OF DETROIT
CITY ENGINEERING DEPARTMENT
BUREAUS OF STREETS AND HIGHWAYS
FOR

PORT IMPROVEMENTS IN THE AREA BOUNDED BY
W - CLARK E - SCOTTEN
S - JEFFERSON N - FORT
PLAN

INDEX NO.	41	SHEET	6 OF 6 SHEETS
CONTRACT NO.	PW 6690	ASSIGNMENT NO.	83-14-19
DATE	3-20-84		