

# SIXTH STREET BRIDGE OVER JEFFERSON AVE. BH - 273

COLEMAN A. YOUNG, MAYOR  
**CITY OF DETROIT**

**CITY ENGINEERING DEPARTMENT**  
CLYDE R. HOPKINS, DIRECTOR

APPROVED  
*[Signature]*  
ASSISTANT CITY ENGINEER

*[Signature]*  
DATE

*[Signature]*  
DIRECTOR

3-27-84  
DATE

**CONTRACT**

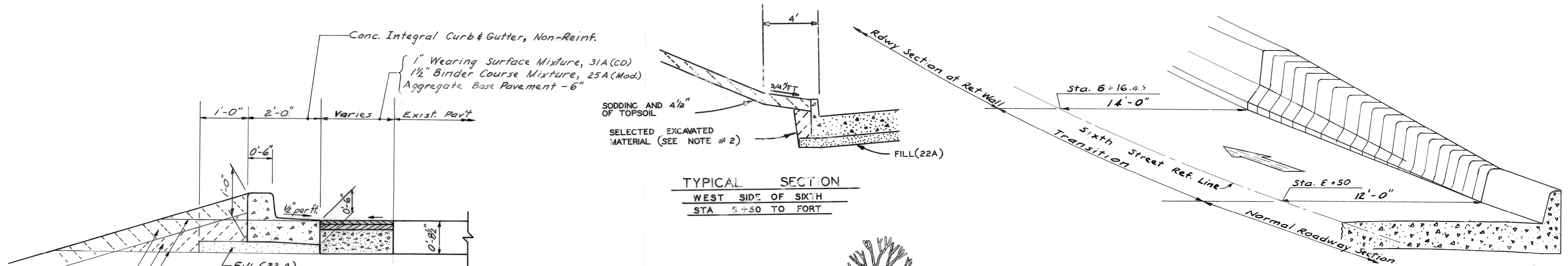
**PW - 6687**

**MARCH 1984**

SCHEDULE OF DRAWINGS

<u>SHEET NO.</u>	<u>ROAD WORK</u>
R-1	TYPICAL CROSS SECTIONS
R-2	ALIGNMENT
R-3	SOUTH APPROACH PLAN - REMOVALS - UTILITIES - CONTOURS
R-4	NORTH APPROACH REMOVAL - UTILITIES
R-5	NORTH APPROACH PLAN - CONTOURS
R-6	PROFILE
R-7	SOUTH APPROACH DETAILED GRADES
R-8	NORTH APPROACH DETAILED GRADES
R-9	WEST JEFFERSON AVE. MEDIAN MODIFICATIONS
R-10	WEST JEFFERSON ALIGNMENT - (REFERENCE DRAWING)
<u>WATER SYSTEM ALTERATIONS</u>	
W-1	GENERAL NOTES
W-2	8" WATER LINE RELOCATION
W-3	MISCELLANEOUS DETAILS
<u>BRIDGE WORK</u>	
5-1	GENERAL DRAWING
5-2	GENERAL PLAN OF SITE
5-3	LOG OF SOIL BORINGS
5-4	GENERAL PLAN OF STRUCTURE
5-5	GENERAL PLAN OF STRUCTURE DETAILS
5-6	GENERAL PLAN OF RETAINING WALLS AND DETAILS
5-7	EXISTING UTILITIES AND PROPOSED ALTERATIONS
5-8	PILES LAYOUT PLAN AND DETAILS
5-9	PILE DETAILS
5-10	SOUTH ABUTMENT 'A' DETAILS
5-11	PIER #1 DETAILS
5-12	PIER #2 DETAILS
5-13	PIER #3 DETAILS
5-14	PIER #4 DETAILS
5-15	PIER #5 AND #6 DETAILS
5-16	NORTH ABUTMENT 'B' DETAILS
5-17	STEEL REINFORCEMENT DETAILS
5-18	RETAINING WALL 'A' AND DETAILS
5-19	RETAINING WALL 'B' AND DETAILS
5-20	RETAINING WALL 'C' AND DETAILS
5-21	RETAINING WALL 'D' AND DETAILS
5-22	RETAINING WALLS TYP. SECTION - DETAILS A, B, C & D
5-23	FASCIA WALL 'E' AND DETAILS
5-24	FASCIA WALL 'F' AND DETAILS
5-25	STRUCT. STEEL DETS. & GIRDER CAMBER, DEFLECTION AND EL. DIAGRAM - SPAN 1, 2 & 3
5-26	STRUCT. STEEL DETS., BM. CAMBER, DEFLECTION AND EL. DIAGRAM - SPAN 4 & 5
5-27	STRUCT. STEEL DETS., BM. CAMBER, DEFLECTION AND EL. DIAGRAM - SPAN 6 & 7
5-28	STRUCTURAL STEEL DETAILS, ELEVATION - SPAN 1, 2 & 3
5-29	STRUCTURAL STEEL DETAILS, ELEVATION - SPAN 4, 5, 6 & 7
5-30	STRUCTURAL STEEL DETAILS, BEARING DETAILS
5-31	STRUCTURAL STEEL DETAILS, DIAGRAM AND MISCELLANEOUS DETAILS
5-32	SUPERSTRUCTURE DETS., TYP. CROSS SECTION, SPAN 1, 2 & 3 AND SPAN 4, 5, 6 & 7
5-33	SUPERSTRUCTURE DETAILS, SPAN 1
5-34	SUPERSTRUCTURE DETAILS, SPAN 2
5-35	SUPERSTRUCTURE DETAILS, SPAN 3
5-36	SUPERSTRUCTURE DETAILS, SPAN 4
5-37	SUPERSTRUCTURE DETAILS, SPAN 5
5-38	SUPERSTRUCTURE DETAILS, SPAN 6
5-39	SUPERSTRUCTURE DETAILS, SPAN 7
5-40	SUPERSTR. DETS., BOTT. OF SLAB, SCREED, TOP OF SLAB FINAL ELS., SPAN 1, 2 & 3
5-41	SUPERSTR. DETS., BOTT. OF SLAB, SCREED, TOP OF SLAB FINAL ELS., SPAN 4 & 5
5-42	SUPERSTR. DETS., BOTT. OF SLAB, SCREED, TOP OF SLAB FINAL ELS., SPAN 6 & 7
5-43	BRIDGE RAILING STANDARDS
5-44	DRAIN CASTING STANDARDS
5-45	EXPANSION JOINT DETAILS
<u>ELECTRICAL WORK</u>	
E-1	LEGEND
E-2	GENERAL INFORMATION
E-3 THRU E-5	GENERAL PLAN
E-6	TRAFFIC SIGNALS AT FORT AND 6TH
E-7	TRAFFIC SIGNALS AT JEFFERSON - EAST OF CABACIER
E-8 THRU E-22	TYPICAL DETAILS AND STANDARDS
<u>LAWN SPRINKLER SYSTEM</u>	
M-1	IRRIGATION SYSTEM MODIFICATIONS
M-2	IRRIGATION SYSTEM MODIFICATIONS
<u>QUANTITY SHEETS</u>	
Q-1	QUANTITIES
Q-2	QUANTITIES

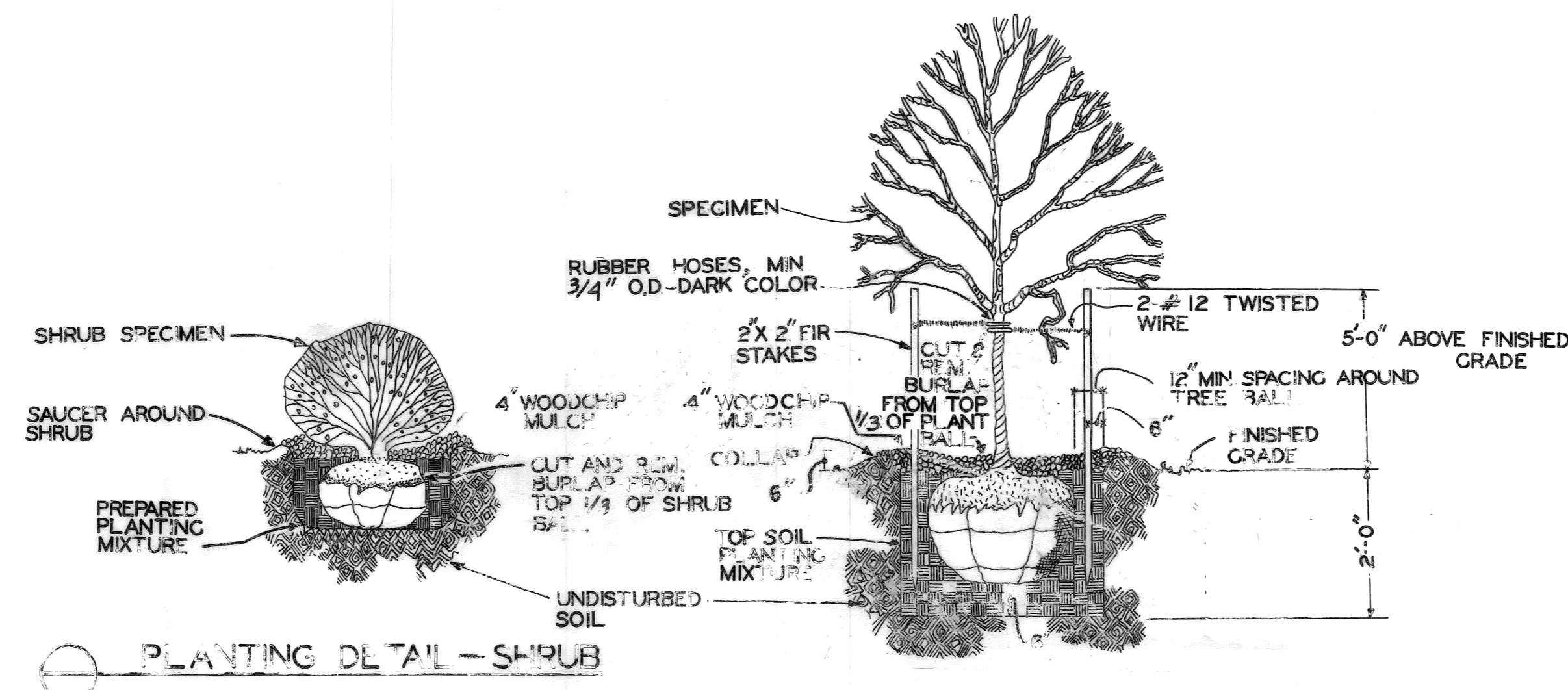




**TYPICAL SECTIONS**  
 PARKING LOT CURB & GUTTER  
 PARKING LOT PAVEMENT

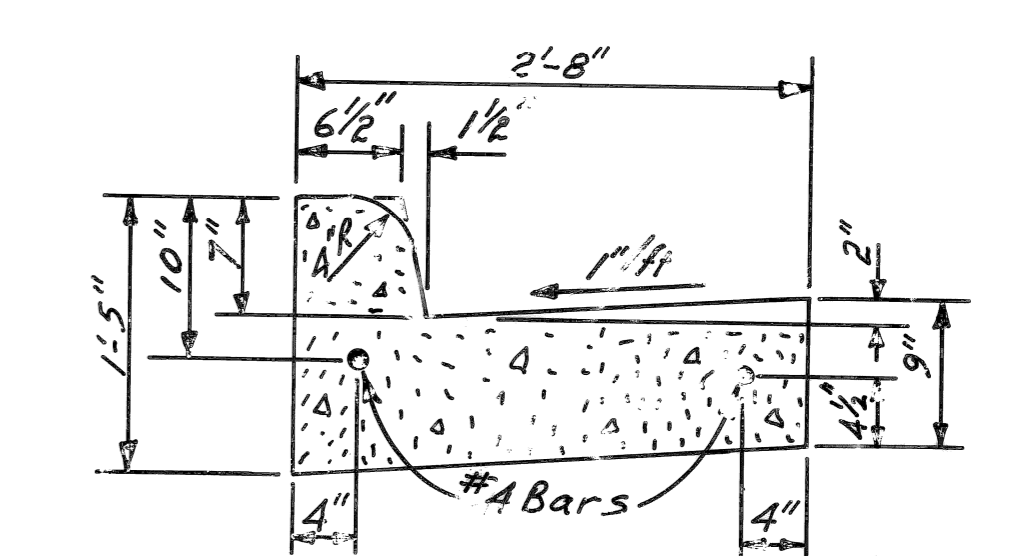
**TYPICAL SECTION**  
 WEST SIDE OF SIXTH  
 STA 8+30 TO FORT

**TRANSITION DETAIL**  
 RETAINING WALL TO CURB  
 S'D SIXTH ST., S. OF FORT ST.

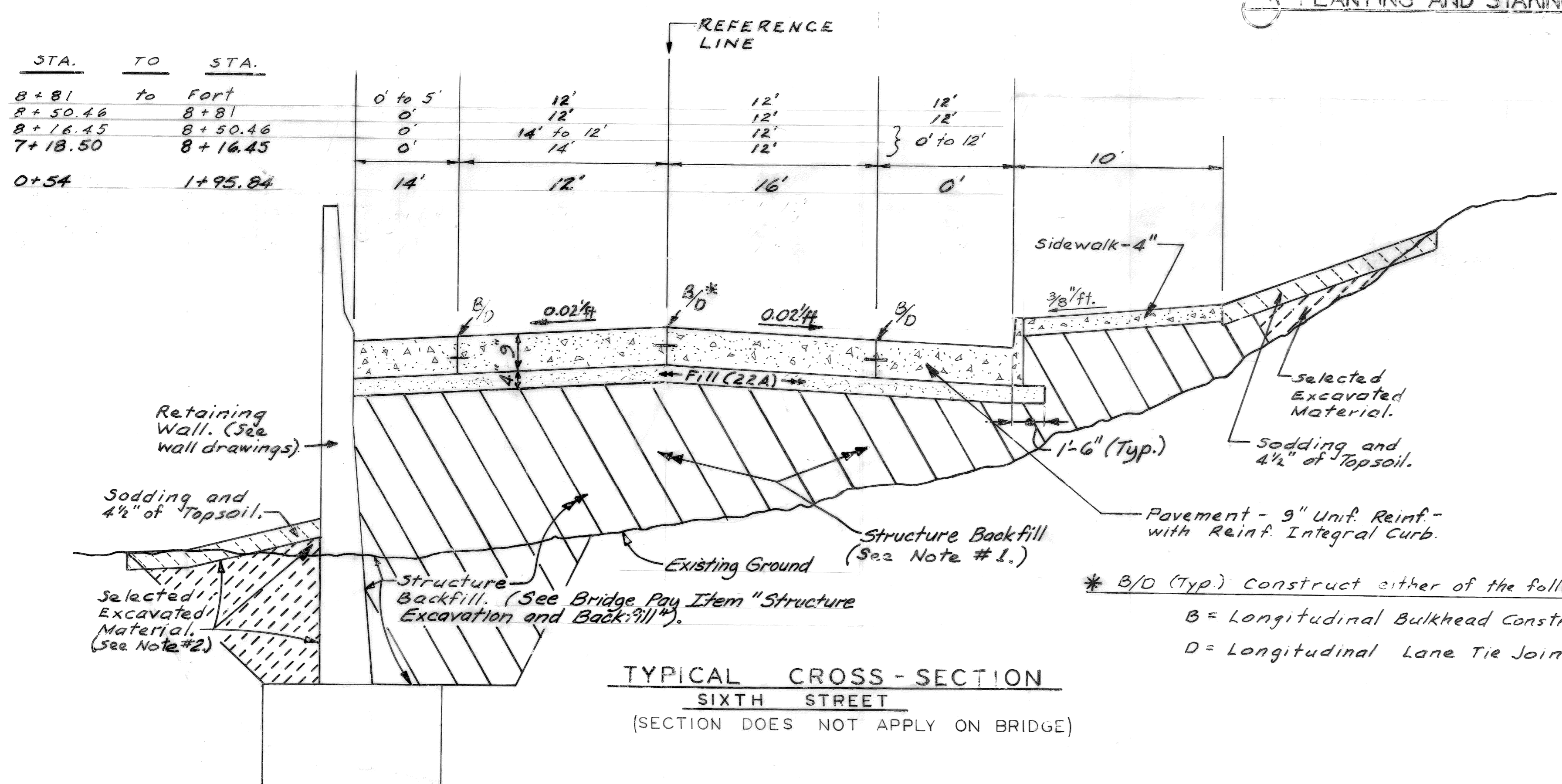


**PLANTING DETAIL - SHRUB**

**PLANTING AND STAKING DETAIL - TREE**



**INTEGRAL CURB & GUTTER - REINFORCED**  
 (See Sheet No. R-9, "West Jefferson Avenue  
 Median Modifications")



**TYPICAL CROSS-SECTION**  
 SIXTH STREET  
 (SECTION DOES NOT APPLY ON BRIDGE)

**NOTES:**

- Where Sixth St. is between retaining walls (walls on both sides of the pavement), all of the fill between the walls below the 4" of "Fill (22A)" (immediately under the pavement) and below the sidewalk shall be "Structure Backfill", which is billed with the bridge and wall plans. The 4" of "Fill (22A)" is billed with the road plans, as is the pavement and sidewalk.
- This fill shall be "Structure Backfill" if under sidewalk.

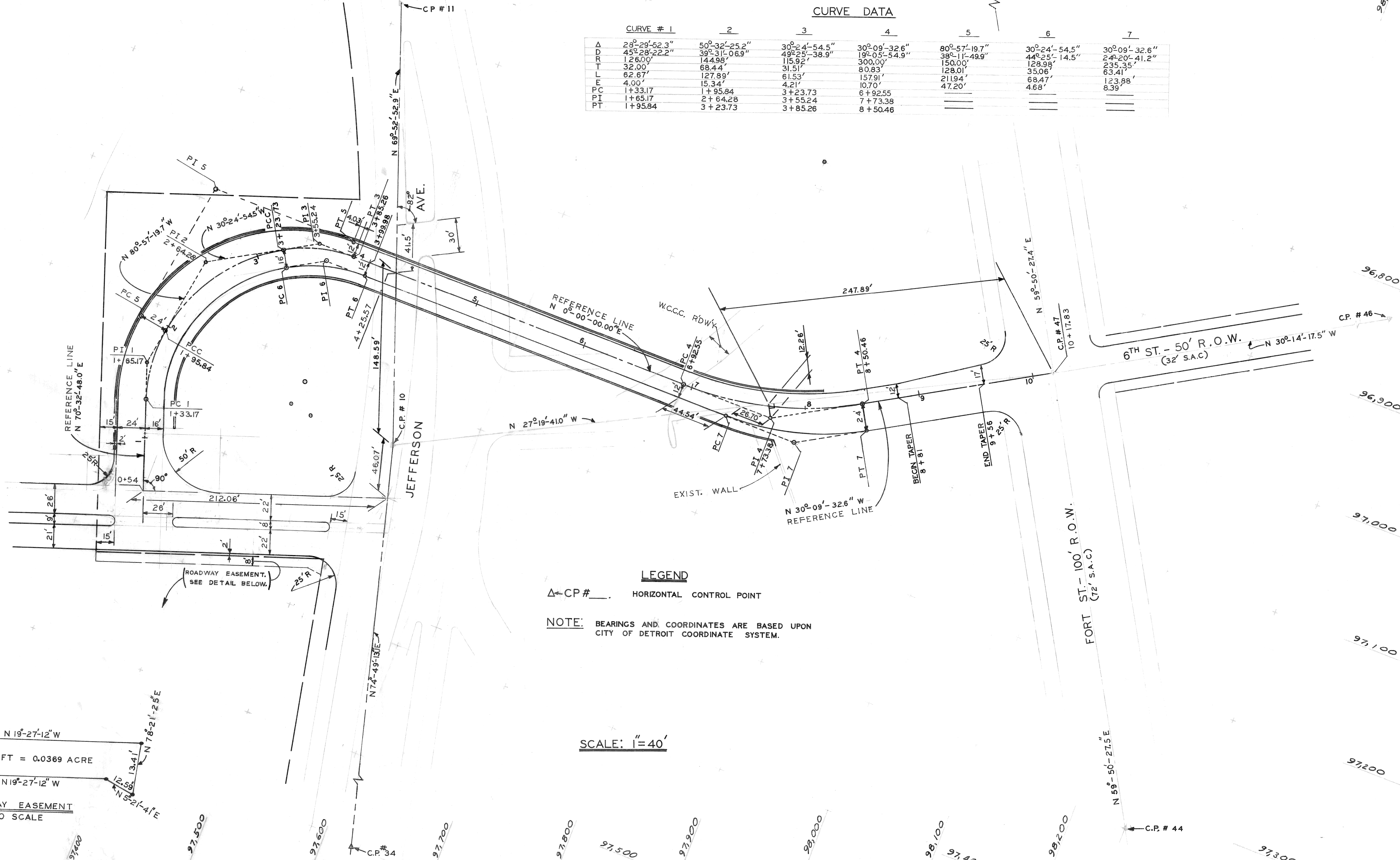
\* B/D (Typ) Construct either of the following:  
 B = Longitudinal Bulkhead Construction Joint.  
 D = Longitudinal Lane Tie Joint.

ALL SECTIONS NOT TO SCALE

REVISIONS LOCATED BY COORDINATES ON SHEET TELDYNE POST 1101125		REFERENCE DRAWINGS DESIGNED BY <b>RBP</b> DRAWN BY <b>RBP</b> TRACED BY CHECKED BY <b>WB</b>	APPROVED:  ENGINEER OF STREETS HIGHWAY ENGINEER	CITY OF DETROIT CITY ENGINEERING BUREAU OF STREETS AND HIGHWAYS	<b>SIXTH STREET BRIDGE OVER JEFFERSON AVE.</b>	SHEET <u>2</u> OF <u>85</u> SHEETS CONTR. NO. <b>PW 6687</b> <b>R-1</b> DATE <u>March, 1984</u>
---	--	--	--	---	--	--

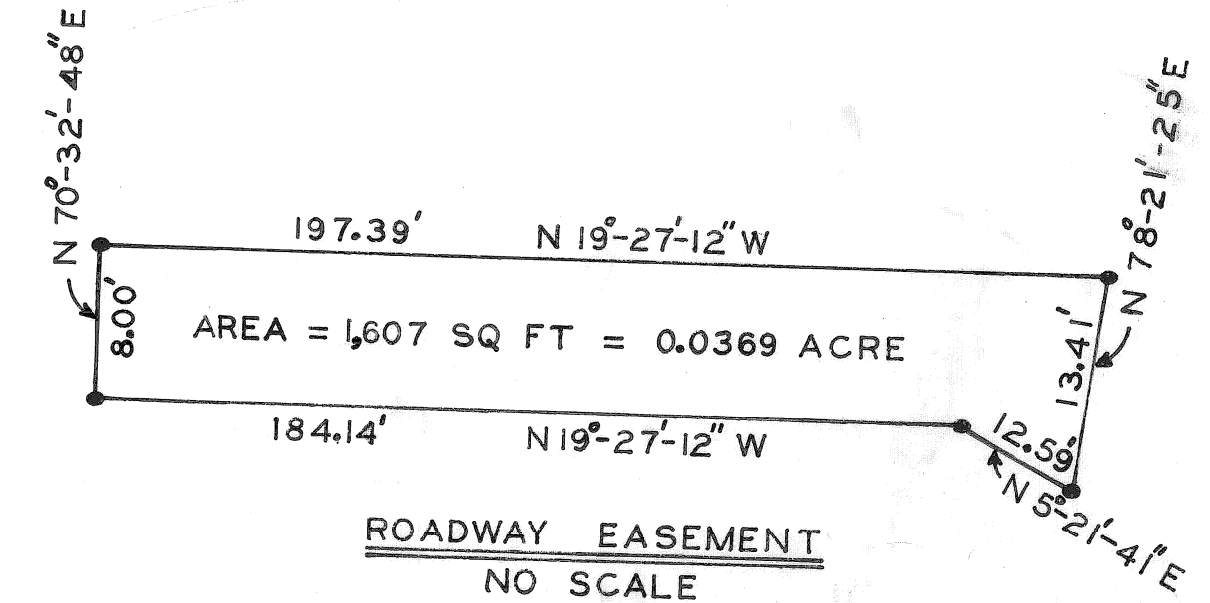


CURVE #	1	2	3	4	5	6	7
Δ	29°-29'-52.3"	50°-32'-25.2"	30°-24'-54.5"	30°-09'-32.6"	80°-57'-19.7"	30°-24'-54.5"	30°-09'-32.6"
D	45°-28'-22.2"	39°-31'-06.9"	49°-25'-38.9"	19°-05'-54.9"	38°-11'-49.9"	44°-25'-14.5"	24°-20'-41.2"
R	126.00'	144.98'	115.92'	300.00'	150.00'	128.98'	235.35'
T	32.00'	68.44'	31.51'	80.83'	128.01'	35.06'	63.41'
L	62.67'	127.89'	61.53'	157.91'	211.94'	68.47'	123.88'
E	4.00'	15.34'	4.21'	10.70'	47.20'	4.68'	8.39'
PC	1+33.17	1+95.84	3+23.73	6+92.55			
PI	1+65.17	2+64.28	3+55.24	7+73.38			
PT	1+95.84	3+23.73	3+85.26	8+50.46			



**LEGEND**  
 Δ-CP# \_\_\_\_\_ HORIZONTAL CONTROL POINT  
**NOTE:** BEARINGS AND COORDINATES ARE BASED UPON CITY OF DETROIT COORDINATE SYSTEM.

SCALE: 1"=40'



COORD	DESCRIPTION	DRN	CK'D	AP'D	DATE

DESIGNED BY	RP
DRAWN BY	RP
TRACED BY	
CHECKED BY	WB

CITY OF DETROIT  
 CITY ENGINEERING  
 BUREAU OF STREETS AND HIGHWAYS

APPROVED:  
  
 HIGHWAY ENGINEER

SIXTH STREET BRIDGE OVER JEFFERSON AVE.  
 ALIGNMENT

SHEET 3 OF 85 SHEETS  
 CONTRACT NO. PW 6687  
 R-2  
 DATE March, 1984