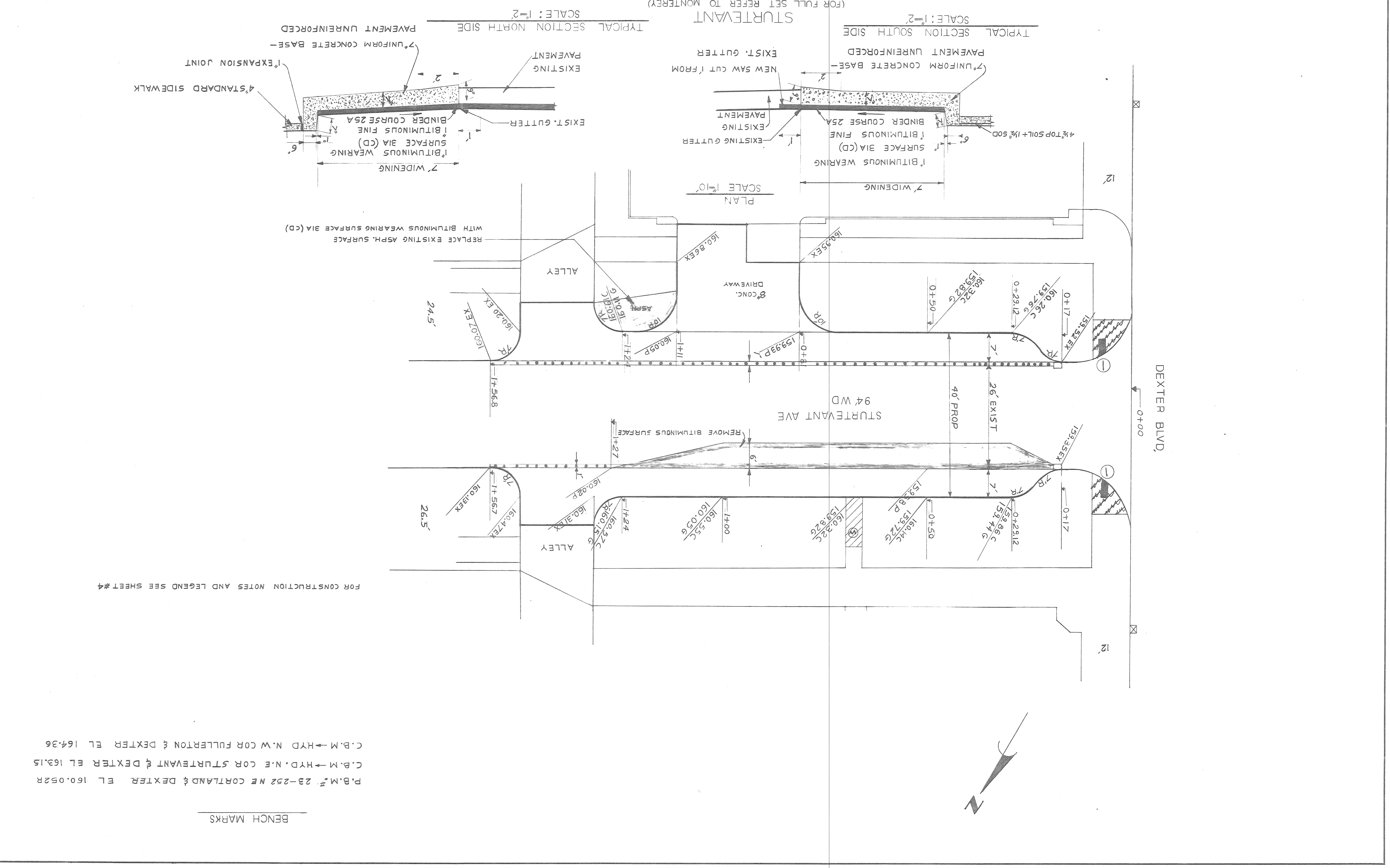


DATE 10-21-82	ASSIGNMENT NO. 82-14-09	CONTRACT NO. PW 6663	SHEET 6 OF 6 SHEETS
WIDENING OF STURTEVANT, RICHTON AND MONTEREY FROM DEXTER TO 120' EAST OF DEXTER AND MISCELLANEOUS CONSTRUCTION DAY-LIN-JOY-DEX PROJECT			
CITY OF DETROIT CITY ENGINEERING DIVISION-D.P.W. BUREAUS OF STREETS AND HIGHWAYS FOR COMMUNITY AND ECONOMIC DEVELOPMENT DEPARTMENT			
DESIGNED BY R.G.	DRAWN BY R.G.	TRACED BY R.G.	CHECKED BY R.G.
APPROVED <i>James X. [Signature]</i>	ENGINEER OF STREETS		



BENCH MARKS
 P.B.M. # 23-252 NE CORTLAND & DEXTER EL. 160.052R
 C.B.M. → HYD. N.E. COR STURTEVANT & DEXTER EL. 163.15
 C.B.M. → HYD. N.W. COR FULLERTON & DEXTER EL. 164.36

FOR CONSTRUCTION NOTES AND LEGEND SEE SHEET #4

Sewer Approval
[Signature]
 10/20/82