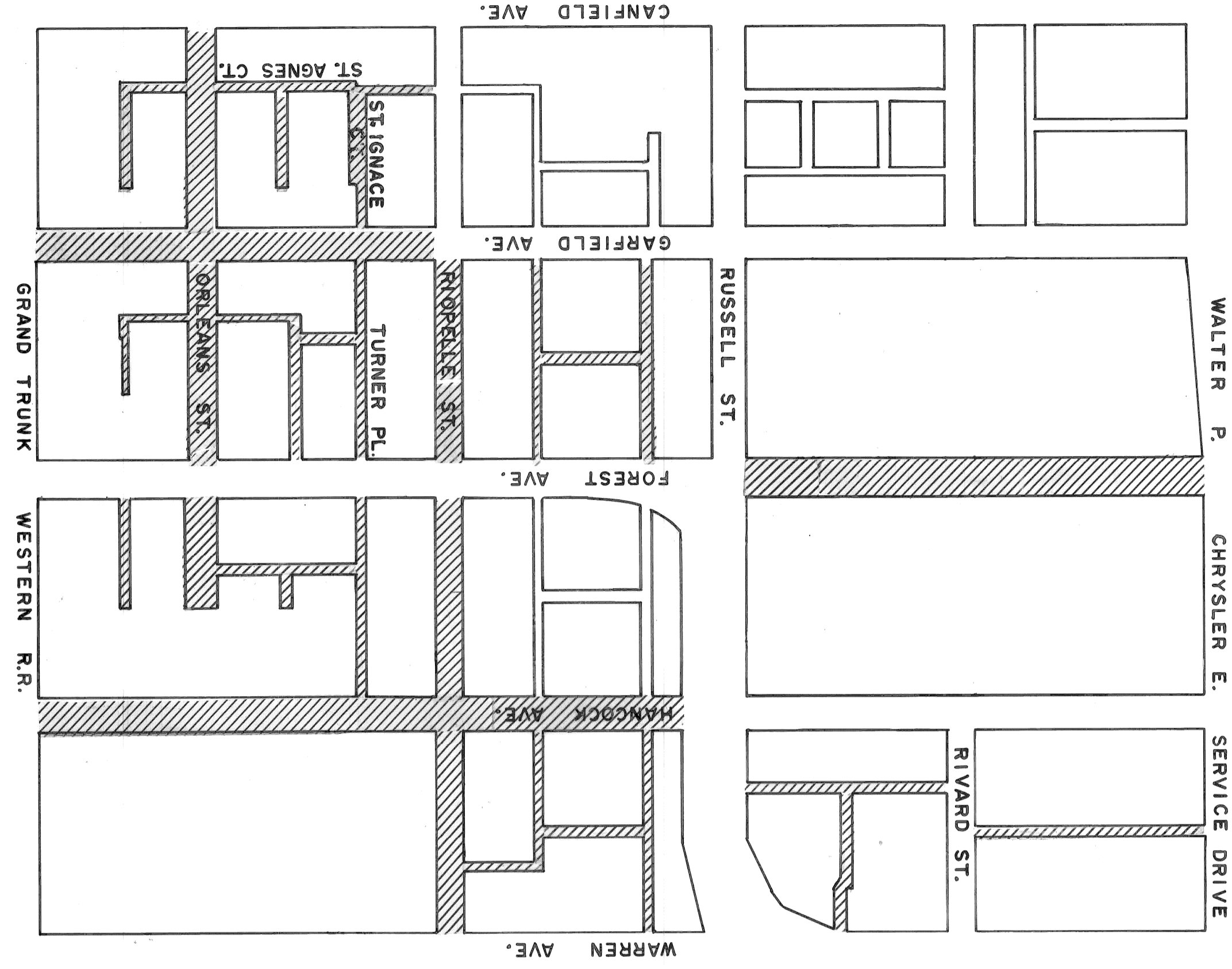


CITY OF DETROIT

CITY ENGINEERING DIVISION - DPW

PLANS FOR PROPOSED

FOREST AVENUE PAVEMENT REPLACEMENT
 CHRYSLER SERVICE DRIVE TO RUSSELL, AND
 MISCELLANEOUS CONSTRUCTION, FOREST PARK
 REHABILITATION PROJECT NO. 2 MICH. R-138



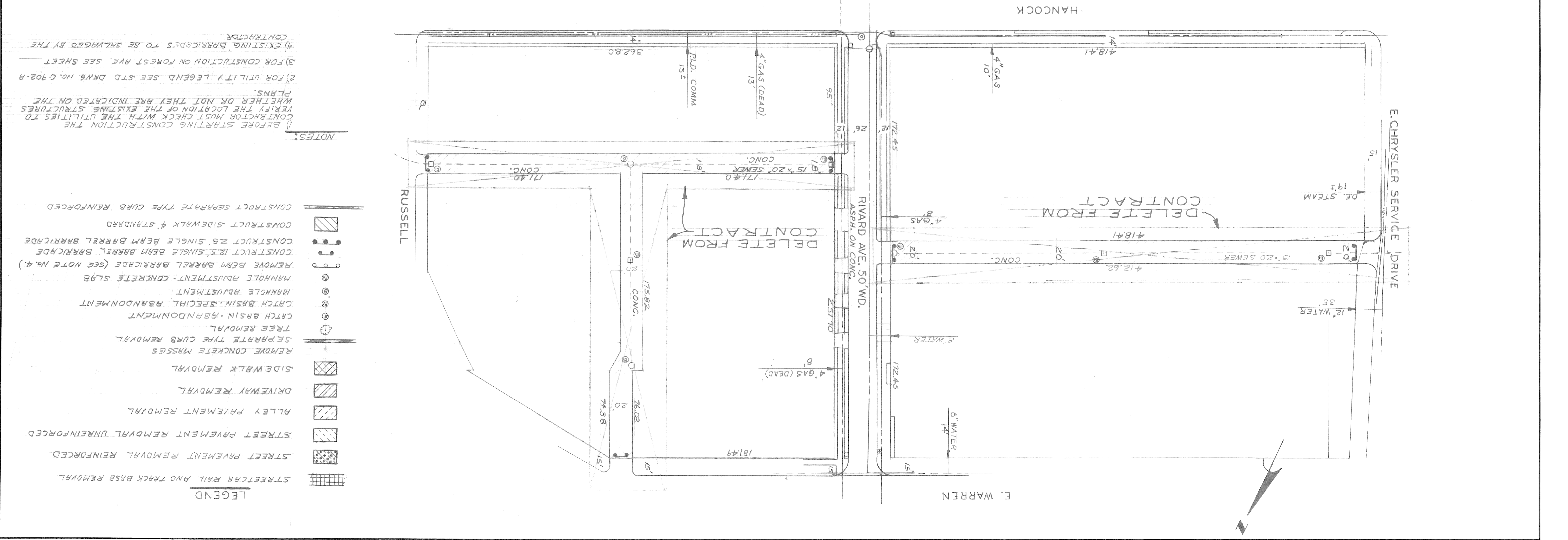
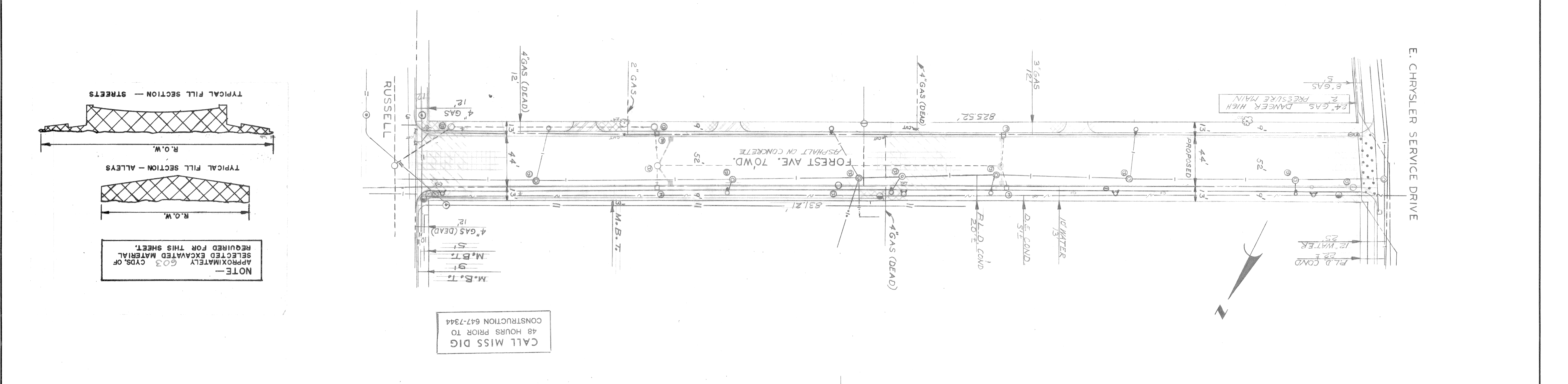
FOREST

DATE JUNE 5, 1981		DRWG. NO. 1 OF 8
RECOMMENDED FOR APPROVAL	ENGINEER OF INSPECTION	DATE
RECOMMENDED FOR APPROVAL	ENGINEER OF STREETS	DATE
APPROVED	ASSISTANT CITY ENGINEER	DATE
APPROVED	CITY ENGINEER	DATE
PLANS PREPARED BY CITY ENGINEERING DIVISION - DPW		
PROJECT: FOREST AVENUE PAVEMENT REPLACEMENT CHRYSLER SERVICE DRIVE TO RUSSELL, AND MISCELLANEOUS CONSTRUCTION, FOREST PARK REHABILITATION PROJECT NO. 2 MICH. R-138		
CONTRACT NO.		PW 6644

- INDEX OF SHEETS
- 1 TITLE SHEET
 - 2-6 REMOVAL AND UTILITY
 - 7 CONSTRUCTION
 - 8 QUANTITY SHEET

DATE JUNE 5, 1981		REVISIONS LOCATED BY COORDINATES ON SHEET		CITY OF DETROIT		APPROVED <i>William J. ...</i> ENGINEER OF STREETS		DRAWN BY LISTON ROSIK		CHECKED BY LISTON	
ASSIGNMENT NO. 80-14-22 B		DESCRIPTION ALLEYS DELETED, M.B.T. ADDED, ...		CITY ENGINEERING DIVISION - D.P.W.		BUREAUS OF STREETS AND HIGHWAYS		RETRACED BY		DRAWINGS	
CONTRACT NO. PW 6644		REHABILITATION PROJECT NO. 2 MICH. R-138		CITY OF DETROIT		CITY ENGINEERING DIVISION - D.P.W.		DESIGNED BY		REFERENCE	
SHEET 2 OF 8 SHEETS		FOREST AVENUE PAVEMENT REPLACEMENT CHRISLER SERVICE DRIVE TO RUSSELL, AND MISCELLANEOUS CONSTRUCTION, FOREST, PARK		CITY OF DETROIT		CITY ENGINEERING DIVISION - D.P.W.		DESIGNED BY		REFERENCE	

SCALE: 1"=40'

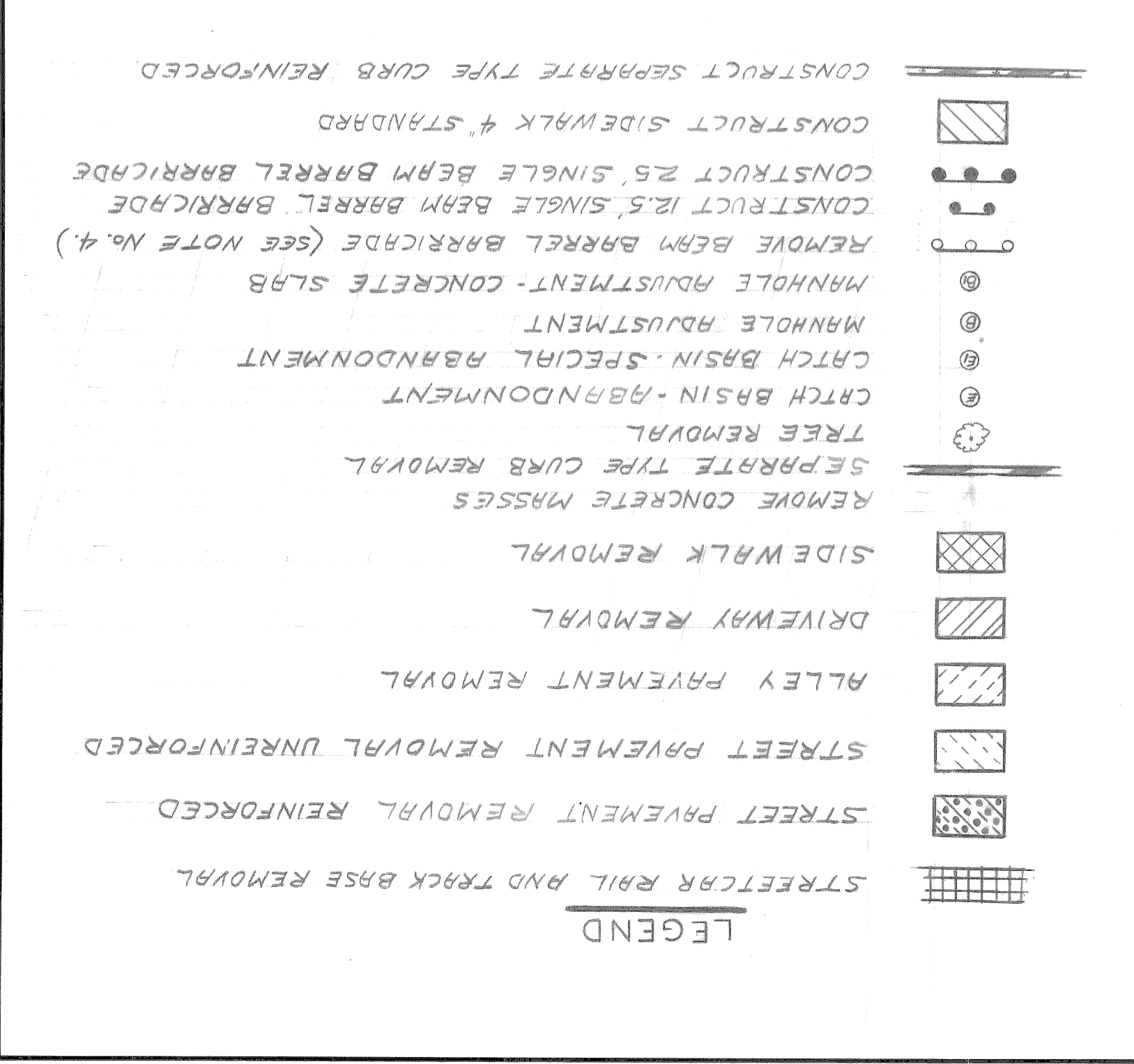


LEGEND

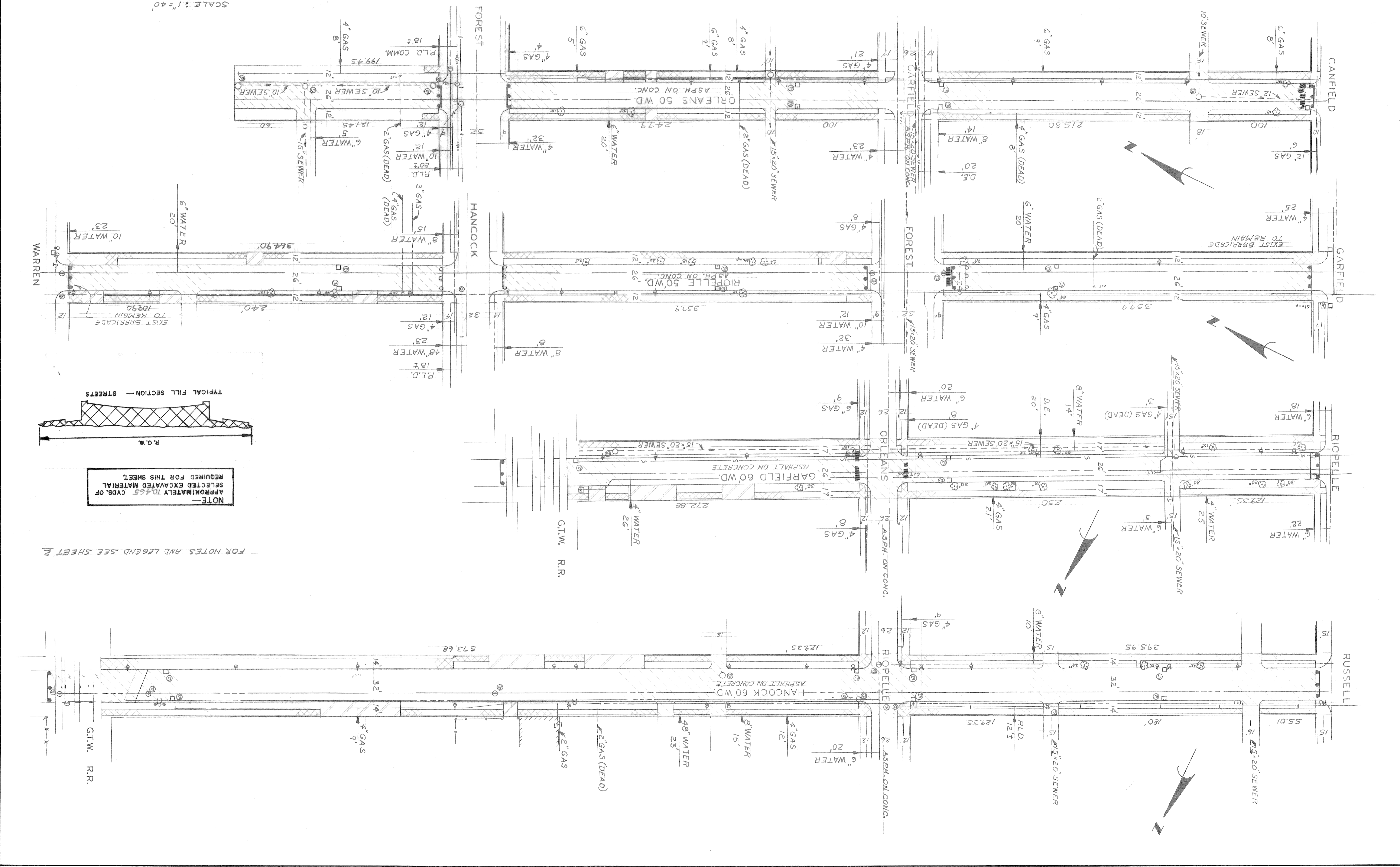
- STREETCAR RAIL AND TRACK BASE REMOVAL
- STREET PAVEMENT REMOVAL UNREINFORCED
- STREET PAVEMENT REMOVAL REINFORCED
- ALLEY PAVEMENT REMOVAL
- DRIVEWAY REMOVAL
- SIDEWALK REMOVAL
- REMOVE CONCRETE MASSES
- SEPARATE TYPE CURB REMOVAL
- TREE REMOVAL
- CATCH BASIN - ABANDONMENT
- CATCH BASIN - SPECIAL ABANDONMENT
- MANHOLE ADJUSTMENT - CONCRETE SLAB
- MANHOLE ADJUSTMENT
- REMOVE BEAM BARREL BARRICADE (SEE NOTE NO. 4)
- CONSTRUCT 2.5' SINGLE BEAM BARREL BARRICADE
- CONSTRUCT 4' STANDARD SIDEWALK
- CONSTRUCT SEPARATE TYPE CURB REINFORCED

NOTES:

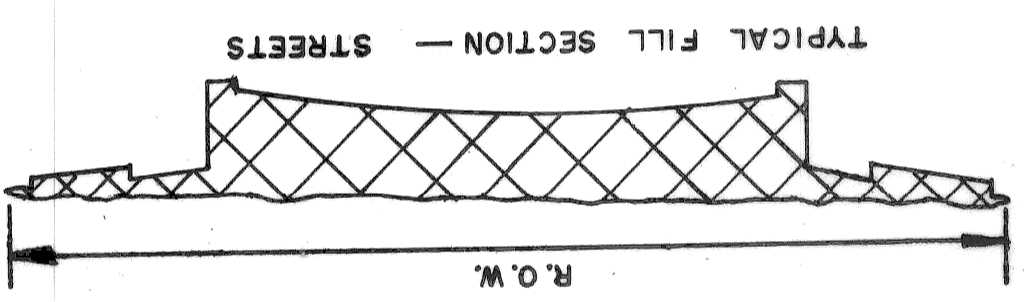
- BEFORE STARTING CONSTRUCTION THE CONTRACTOR MUST CHECK WITH THE UTILITIES TO VERIFY THE LOCATION OF THE EXISTING UTILITIES TO WHETHER OR NOT THEY ARE INDICATED ON THE PLANS.
- FOR UTILITY LEGEND SEE STD. DRWG. NO. C-902-H
- FOR CONSTRUCTION ON FOREST AVE. SEE SHEET
- EXISTING BARRICADES TO BE SALVAGED BY THE CONTRACTOR



REVISIONS LOCATED BY COORDINATES ON SHEET COORD. DESCRIPTION DRN. CRD. APP'D. DATE		CHECKED BY LISTON		ENGINEER OF STREETS APPROVED: <i>James J. Kallala</i>	
DRAWINGS DESIGNED BY		DRAWN BY ROSIK		CITY ENGINEERING DIVISION - D.P.W. BUREAU OF STREETS AND HIGHWAYS	
REFERENCE		TRACED BY		CITY OF DETROIT FOREST AVENUE PAVEMENT REPLACEMENT MISCELLANEOUS CONSTRUCTION, FOREST, PARK REHABILITATION PROJECT NO. 2 MICH. R-138	
SHEET 3 OF 8 SHEETS		CONTRACT NO. PW 6644		REMOVAL AND UTILITY	
ASSIGNMENT NO. 80-14-22 B		DATE JUNE 5, 1981		11 10 9 8 7 6 5 4 3 2 1	

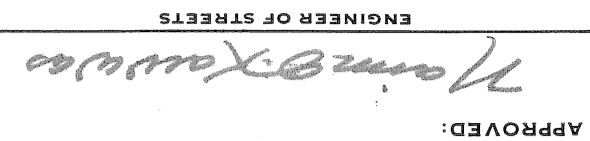


SCALE: 1" = 40'



NOTE - APPROXIMATELY 10,465 CYDS. OF SELECTED EXCAVATED MATERIAL REQUIRED FOR THIS SHEET.

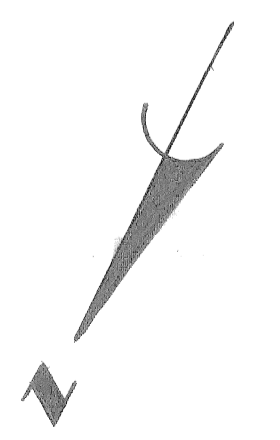
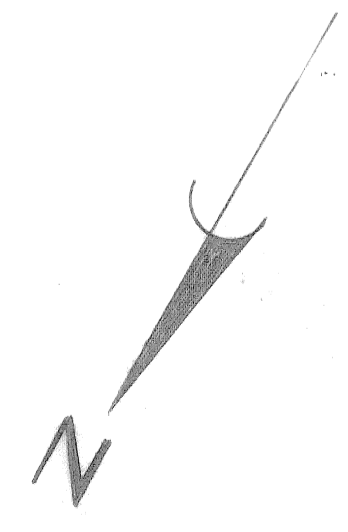
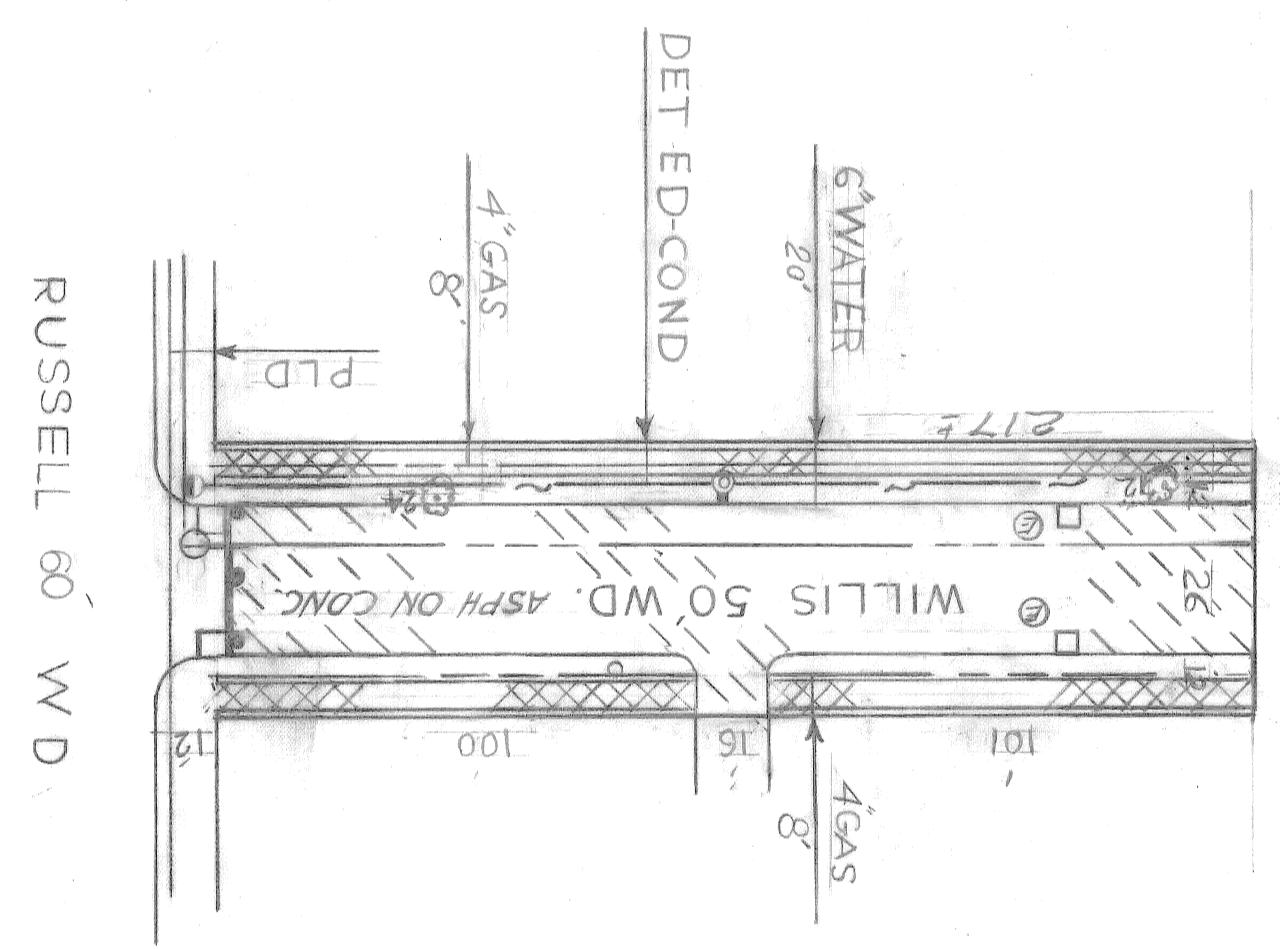
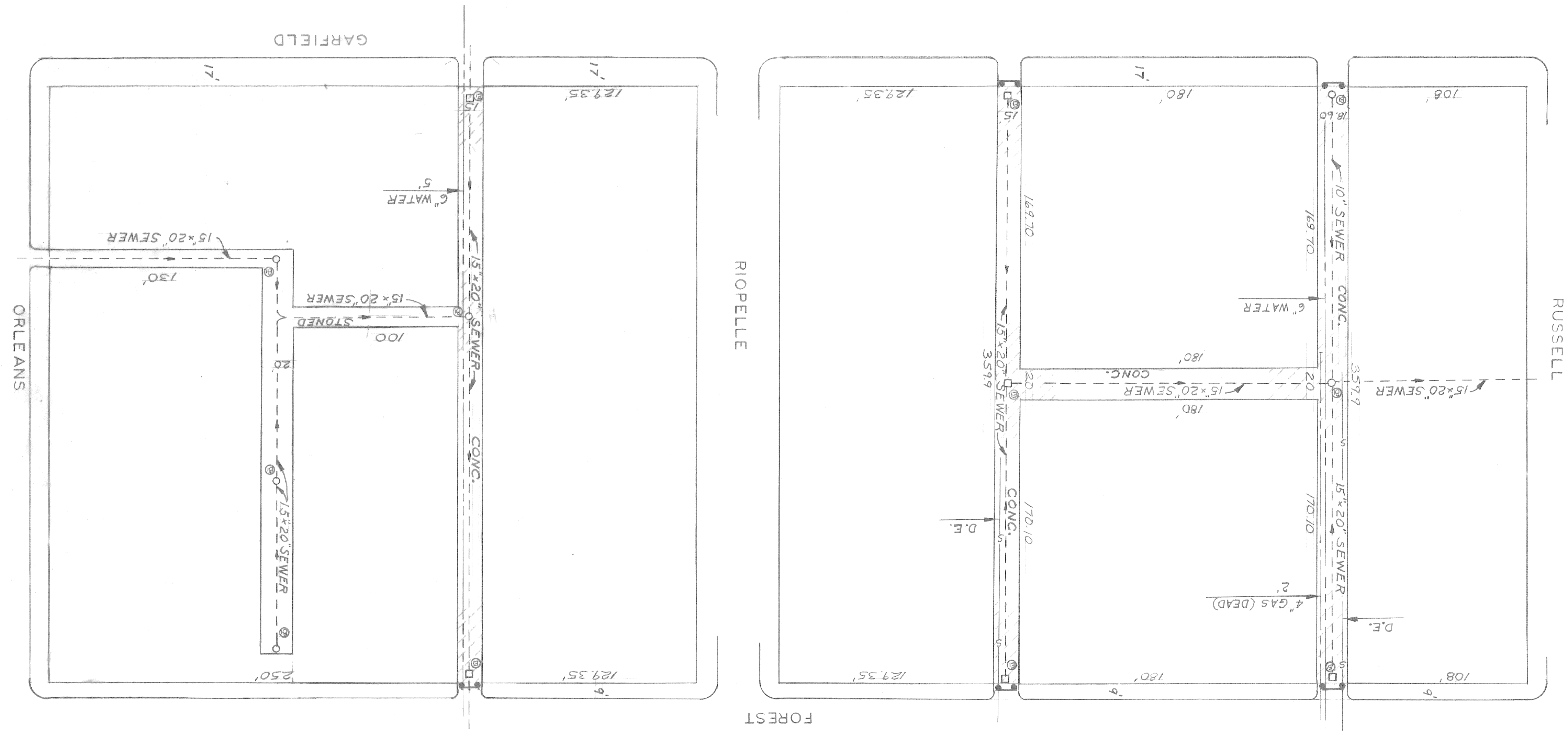
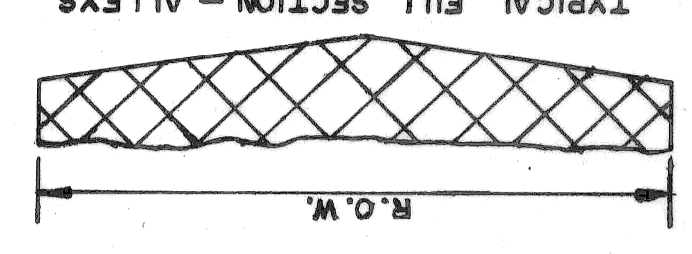
FOR NOTES AND LEGEND SEE SHEET 2

REVISIONS LOCATED BY COORDINATES ON SHEET COORD. DESCRIPTION REMOVAL OF WILLS ABDEB RY LL 2/16/77		CHECKED BY LISTON
DRAWINGS DESIGNED BY Rosik		DRAWN BY Rosik
APPROVED:  ENGINEER OF STREETS		TRACED BY
CITY OF DETROIT CITY ENGINEERING DIVISION-D.P.W. BUREAUS OF STREETS AND HIGHWAYS		
FOREST AVENUE PAVEMENT REPLACEMENT MISCELLANEOUS CONSTRUCTION, FOREST PARK CHRYSLER SERVICE DRIVE TO RUSSELL, AND REHABILITATION PROJECT NO. 2 MICH. R-138 REMOVAL AND UTILITY		
SHEET 4 OF 8 SHEETS	CONTRACT NO. PW 6644	ASSIGNMENT NO. 80-14-22 B
DATE JUNE 5, 1981	11	10 9 8 7 6 5 4 3 2 1

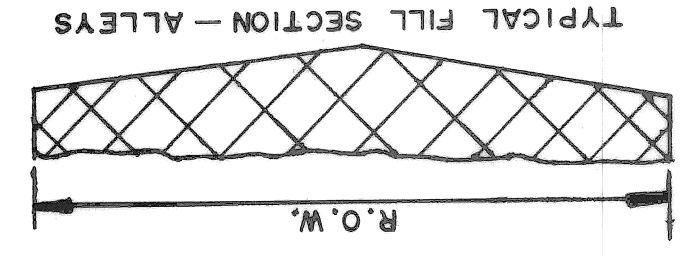
SCALE: 1"=40'

FOR NOTES AND LEGEND SEE SHEET 2

NOTE—
 APPROXIMATELY 650 CYDS. OF
 SELECTED EXCAVATED MATERIAL
 REQUIRED FOR THIS SHEET.



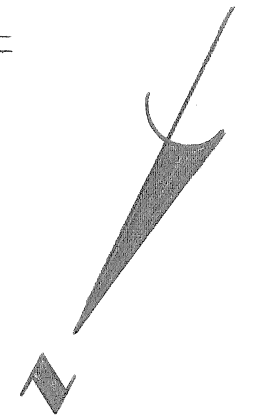
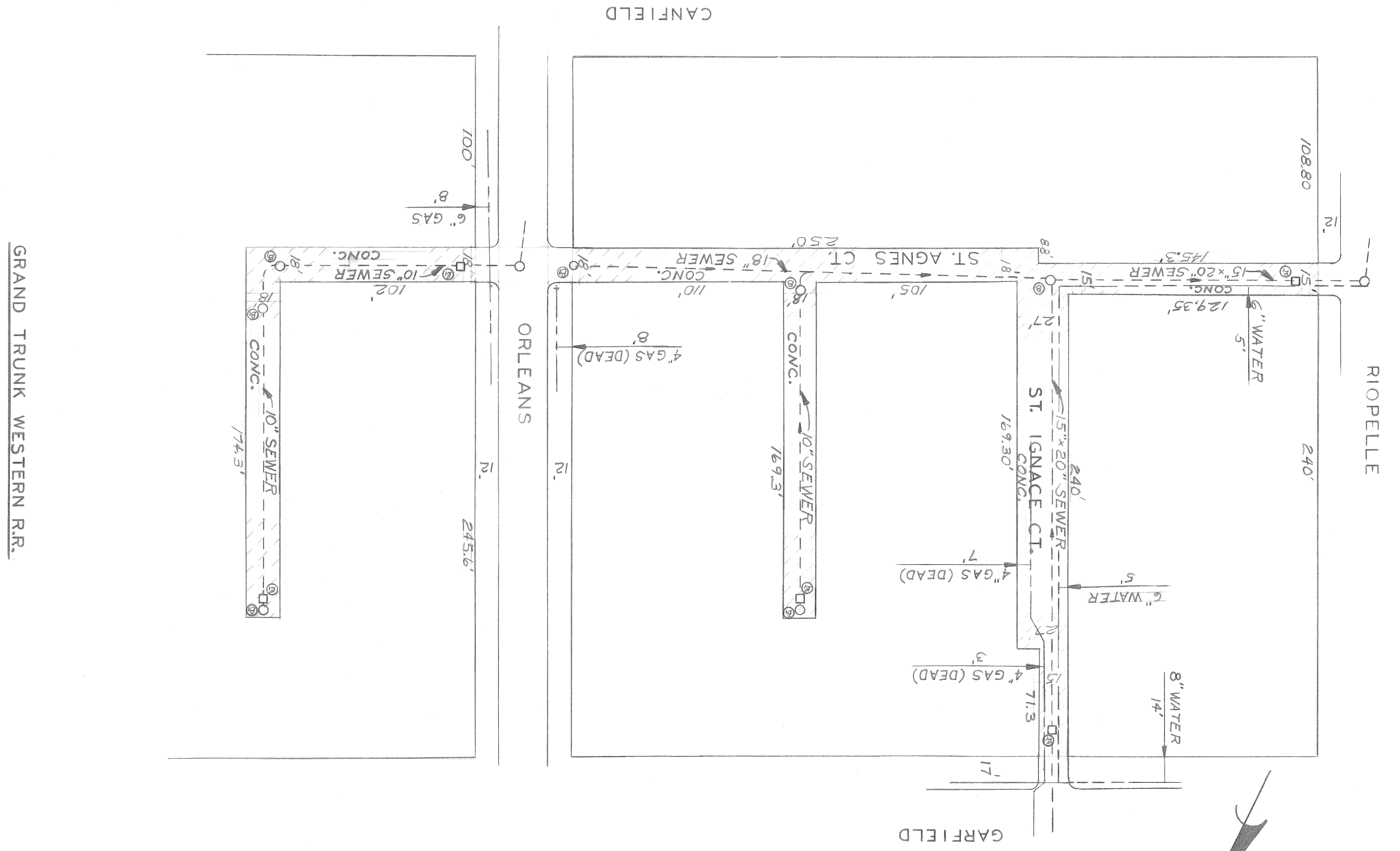
REVISIONS LOCATED BY COORDINATES ON SHEET		2	3	4	5	6	7	8	9	10	11
COORD.	DESCRIPTION	DRN. CNO.	APVD. DATE	CHECKED BY	TRACED BY	DRAWN BY	DESIGNED BY	APPROVED:	CITY OF DETROIT ENGINEER OF STREETS		
				LITSTON		Rosik		<i>[Signature]</i>	FOREST AVENUE PAVEMENT REPLACEMENT MISCELLANEOUS CONSTRUCTION, FOREST PARK CHRYSLER SERVICE DRIVE TO RUSSELL, AND REHABILITATION PROJECT NO. 2 MICH. R-138 REMOVAL AND UTILITY		
SHEET 6 OF 8 SHEETS		CONTRACT NO. PW 6644		ASSIGNMENT NO. 80-14-22 B		DATE JUNE 5, 1981					



NOTE—
APPROXIMATELY 635 CYDS. OF
SELECTED EXCAVATED MATERIAL
REQUIRED FOR THIS SHEET.

FOR NOTES AND LEGEND SEE SHEET 2

SCALE : 1"=40'



Y
B
C
D
E
F
G

ITEM NO.	DESCRIPTION OF ITEM	UNIT	SHEET 2	SHEET 3	SHEET 4	SHEET 5	SHEET 6	SHEET 7	TOTAL
1	EXCAVATION	CYDS	234	234	—	—	—	—	234
2	STREET PAVEMENT REMOVAL UNREINFORCED	SYDS	3422	13,110	—	—	—	—	16,532
3	STREET PAVEMENT REMOVAL REINFORCED	SYDS	110	—	—	—	—	—	110
4	STREETCAR TRACK BASE REMOVAL	SYDS	1,548	—	—	—	—	—	1,548
5	STREETCAR RAIL REMOVAL	LFT	3344	—	—	—	—	—	3344
6	ALLEY PAVEMENT REMOVAL	SYDS	2209	—	2,344	2,884	2,290	—	9,727
7	SIDEWALK REMOVAL	SFT	1,3873	42,682	—	—	—	—	56,555
8	DRIVEWAY REMOVAL	SFT	699	6,150	—	—	—	—	6,849
9	TREE REMOVAL 4" TO 12"	EACH	4	—	—	—	—	—	4
10	TREE REMOVAL 13" TO 18"	EACH	7	—	—	—	—	—	7
11	TREE REMOVAL 24"	EACH	5	—	—	—	—	—	5
12	TREE REMOVAL 30"	EACH	9	—	—	—	—	—	9
13	TREE REMOVAL 36"	EACH	1	—	—	—	—	—	1
14	TREE REMOVAL 42"	EACH	1	—	—	—	—	—	1
15	TREE REMOVAL 54"	EACH	1	—	—	—	—	—	1
16	STUMP REMOVAL	EACH	1	—	—	—	—	—	1
17	LARGE CONC. DEBRIS REMOVAL (ABOVE GROUND)	CYDS	27	—	—	—	—	—	27
18	LITTER REMOVAL	CYDS	—	—	—	—	—	—	10
19	FILL GRADE "A"	CYDS	—	—	—	—	—	—	237
20	GRADING ABANDONED STREETS	SYDS	—	23,666	—	—	—	—	23,666
21	GRADING ABANDONED ALLEYS	SYDS	2,209	—	2,344	2,884	2,290	—	9,727
22	MANHOLE RECONSTRUCT CONE	EACH	—	—	—	—	—	—	1
23	CATCH BASIN ABANDONMENT	EACH	4	—	—	—	—	—	4
24	CATCH BASIN SPECIAL ABANDONMENT	EACH	5	21	6	9	5	—	46
25	MANHOLE ADJUSTMENT	EACH	12	—	—	—	—	—	12
26	MANHOLE ADJUSTMENT CONC. SLAB	EACH	3	12	3	3	7	—	28
27	CATCH BASIN TYPE "L"	EACH	—	—	—	—	—	2	2
28	CATCH BASIN 18"x12" SPECIAL "Y"	EACH	—	—	—	—	—	1	1
29	CATCH BASIN "A"	EACH	—	—	—	—	—	1	1
30	CATCH BASIN "B" WITH TRAP & MANHOLE COVER	EACH	—	—	—	—	—	1	1
31	SEWER PIPE 12" C-76-III	LFT	—	—	—	—	—	90	90
32	PAVEMENT 9" UNIFORM-REINFORCED *	SYDS	—	—	—	—	—	4,298	4,298
33	SIDEWALK 4" STANDARD *	SFT	—	—	—	—	—	17,185	17,185
34	SIDEWALK 6" STANDARD *	SFT	—	—	—	—	—	634	634
35	DRIVEWAY 6" STANDARD	SFT	—	—	—	—	—	926	926
36	SINGLE BERM BARREL BARRICADE	LFT	63	250	—	—	—	—	313
37	TEST CORES	EACH	—	—	—	—	—	2	2
38	CLEANING STRUCTURES	EACH	—	—	—	—	—	—	1
39	MAINTAINING TRAFFIC	LUMP SUM	—	—	—	—	—	—	—

* INCLUDES REINFORCED INTEGRAL CURB (SEE STD. DWG. N. 4943)
 ** CONSTRUCTION ONLY

L* = DISTANCE FROM FACE OF CURB (ON HIGH SIDE) TO CROWN

PAVEMENT WIDTH	CURB FACE	L*											
		T	A	B	C	D	E	F	G	S	L*		
44"	7"	0	5 1/8"	3 1/4"	2 5/8"	2 5/8"	2 5/8"	3 1/8"	2 5/8"	3 1/8"	5 1/8"	2 5/8"	22'
		.1	6 1/8"	4 5/8"	3 5/8"	3 5/8"	3 5/8"	4"	5 1/4"	3 1/8"	3 1/8"	20.5'	
		.2	7 3/16"	5 1/2"	4 3/8"	3 13/16"	3 3/4"	4 5/8"	5 3/8"	3 3/4"	3 3/4"	19'	
		.3	8 1/2"	6 3/8"	5 1/8"	4 3/8"	4 1/2"	4 5/8"	5 1/2"	4 1/2"	4 1/2"	17.5'	
		.4	9 1/4"	7 5/8"	5 7/8"	5"	4 1/2"	4 7/8"	5 1/2"	4 1/2"	4 1/2"	16'	

ELEMENTS FOR 44" PAVEMENT

