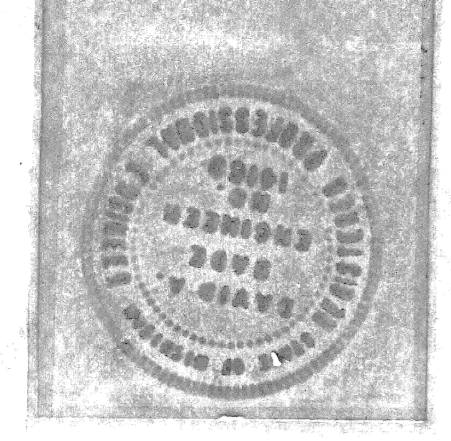


PROJECT NAME  
MULTI-PURPOSE TALL  
SACRED HEART PARISH  
DETROIT MICHIGAN

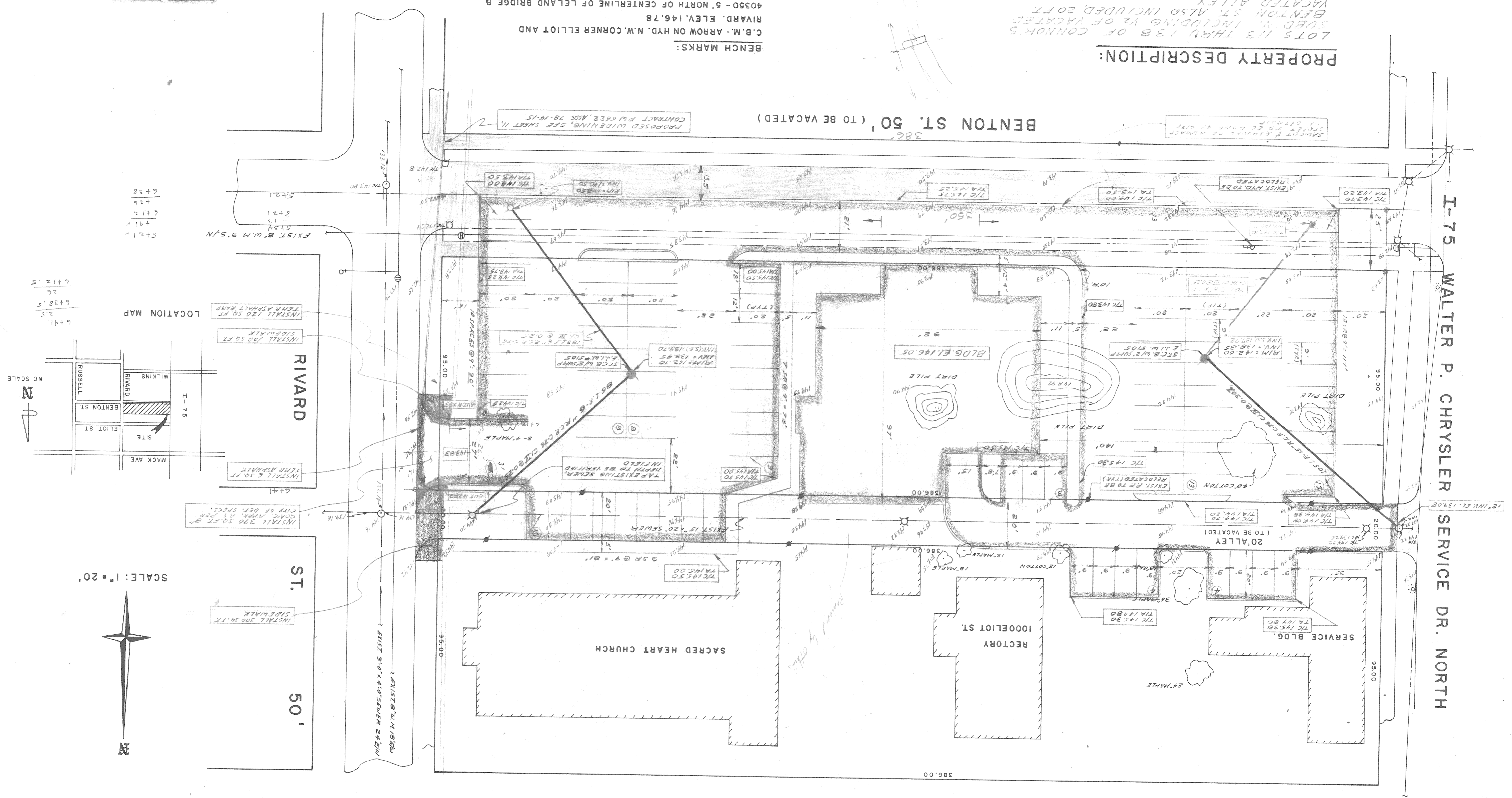
**SHOPLIFT 2000**

ARCHITECTS & PLANNERS  
45100 STERRITT SUITE 204  
DTICA, MI 48087 739-0200



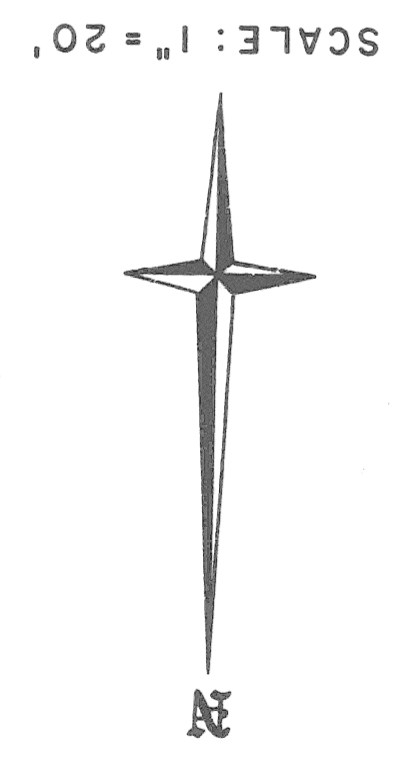
PROPERTY DESCRIPTION:  
LOTS 113 THRU 138 OF CONNOR'S  
SUBD. N. INCLUDING 1/2 OF VACATED  
BENTON ST. ALSO INCLUDED SOFT  
VACATED ALLEY.

BENCH MARKS:  
C.B.M. - ARROW ON HYD. N.W. CORNER ELLIOT AND  
RIVARD, ELEV. 146.78  
40350 - 5' NORTH OF CENTERLINE OF LELAND BRIDGE &  
14' WEST OF SERVICE CHRYSLER DRIVE NORTH E.L. 149.10  
SET BENCH MARK - ARROW ON HYDRANT, NORTH SIDE OF  
BENTON ST. 55' EAST OF SERVICE DR. E.L. 146.28  
C.B.M. - ARROW ON HYD. N.W. CORNER WATT AND  
RIVARD, ELEV. 144.69



LOCATION MAP

6+41.1	2.5	6+38.5	2.6	6+32.5
6+41.1	2.5	6+38.5	2.6	6+32.5



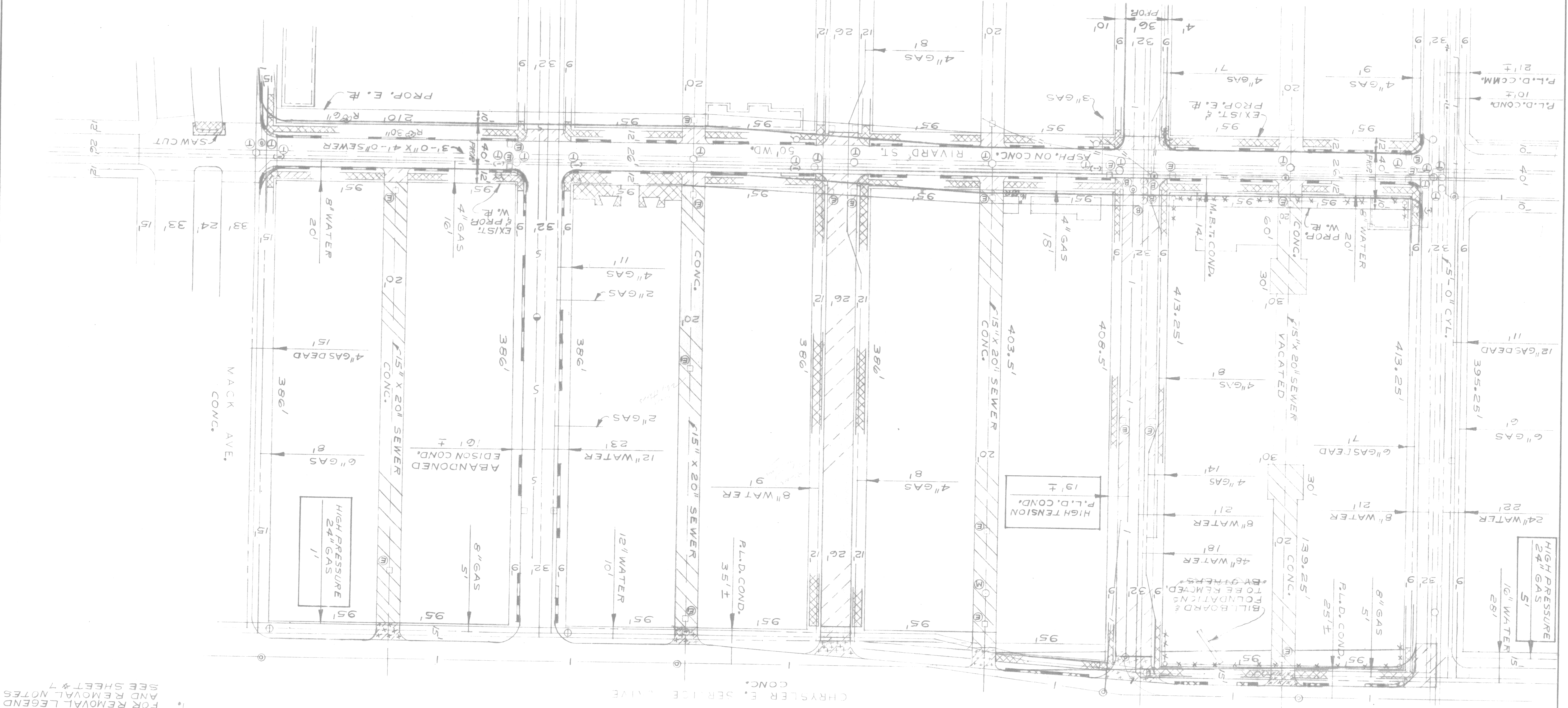
I-75  
WALTER P. CHRYSLER  
SERVICE DR. NORTH

ELLIOT ST. 50'

DATE AUG. 1, 1980	ASSIGNMENT NO. 78-14-15	CONTRACT NO. PW 6622	SHEET 8 OF 44 SHEETS
WIDENING OF CHRYSLER E. SERVICE DRIVE, RIVARD, AND PAVING OF RUSSELL AND MISCELLANEOUS CONSTRUCTION			
WHOLESALE DISTRIBUTION CENTER NO. 2 MICH. R-165			
REMOVAL PLAN			

CITY OF DETROIT  
 BUREAUS OF STREETS AND HIGHWAYS  
 CITY ENGINEERING DIVISION-D.P.W.  
 FOR  
 COMMUNITY AND ECONOMIC DEVELOPMENT DEPARTMENT

DESIGNED BY	JONES
DRAWN BY	JONES
TRACED BY	
CHECKED BY	L. STON
APPROVED	<i>James A. ...</i>
ENGINEER OF STREETS	
DESCRIPTION	
REVISED	
DATE	
BY	
REVISIONS LOCATED BY COORDINATES ON SHEET	



PLAN  
 SCALE: 1" = 40'

NOTE - APPROXIMATELY 2959 CYDS. OF SELECTED EXCAVATED MATERIAL REQUIRED FOR THIS SHEET.

CONSTRUCTION 847-383  
 48 HOUR PERM  
 CALL MISS DIS

WATSON ST.  
 50' WD.  
 ASPH. ON CONC.

ERSKINE ST.  
 50' WD.  
 ASPH. ON CONC.

BENTON ST.  
 50' WD.  
 ASPH. ON CONC.

ELIOT ST.  
 50' WD.  
 ASPH. ON CONC.

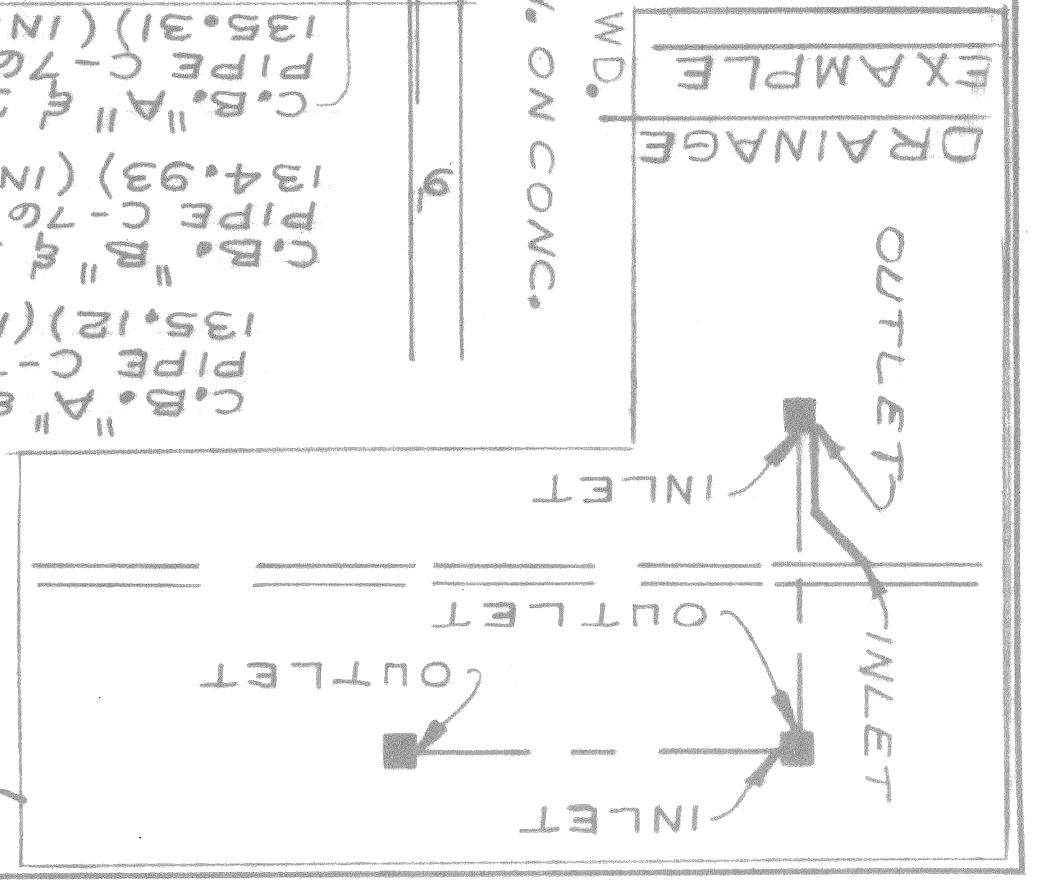
SEE SHEET # 9

TYPICAL FILL SECTION - ALLEYS  
 R.O.W. VARIES

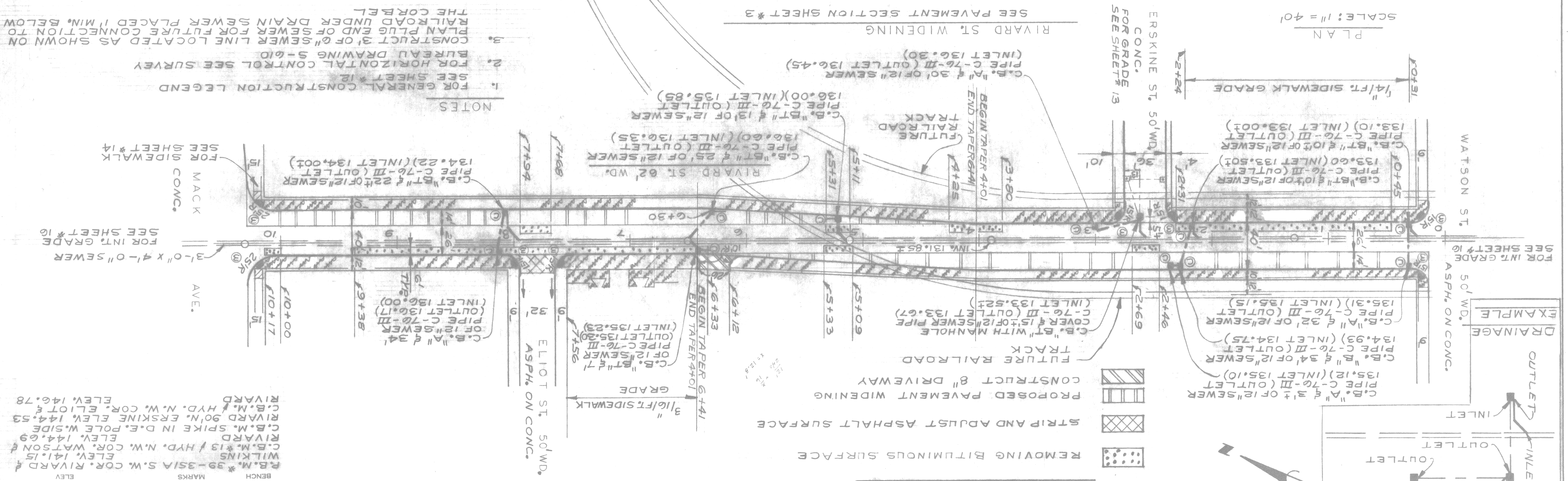
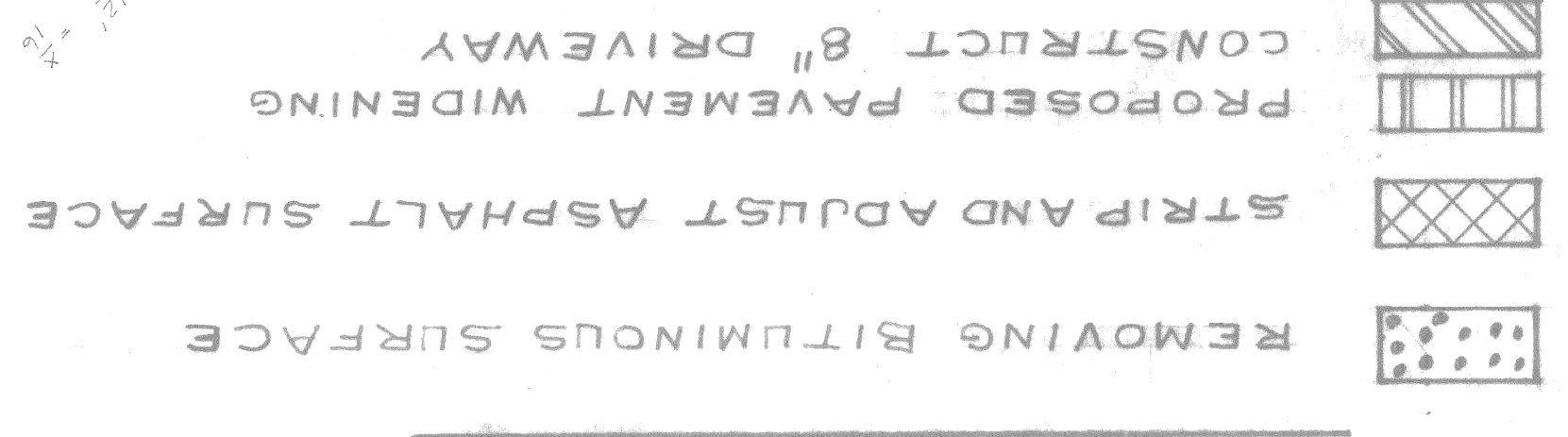
TYPICAL FILL SECTION - STREETS  
 R.O.W. VARIES

CHRYSLER E. SERVICE DRIVE  
 CONC.

FOR REMOVAL LEGEND AND REMOVAL NOTES SEE SHEET # 7



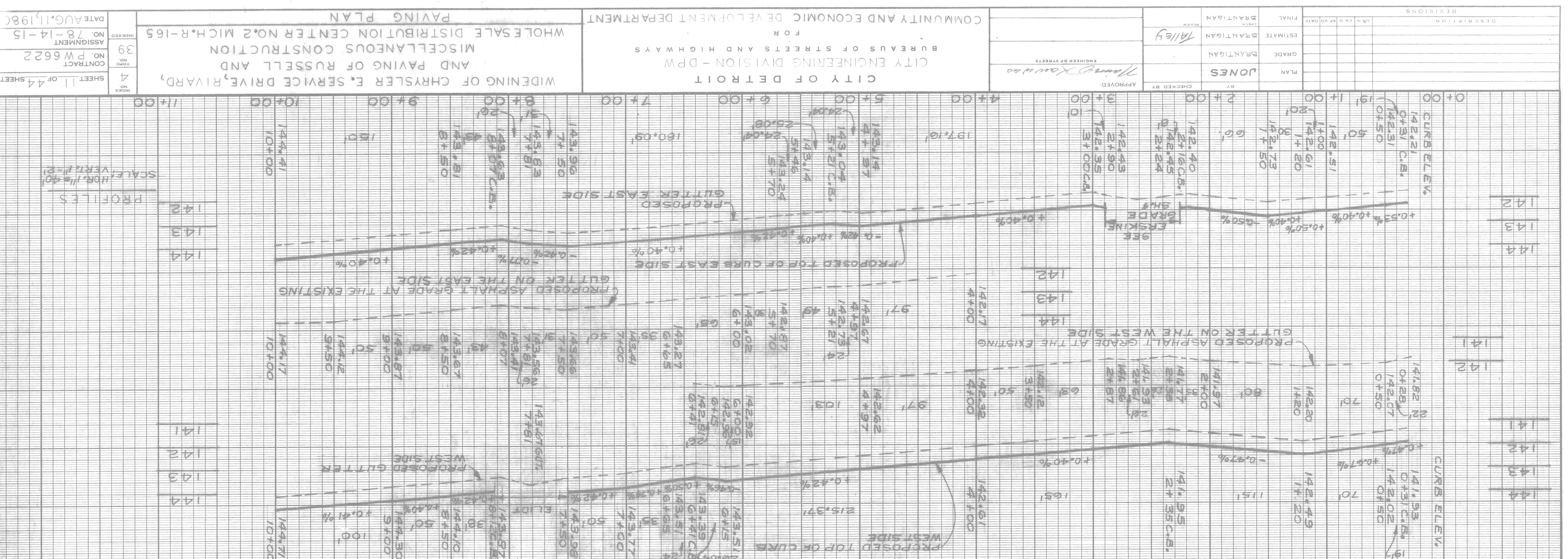
CONSTRUCTION LEGEND



- NOTES
1. FOR GENERAL CONSTRUCTION LEGEND SEE SHEET # 12
  2. FOR HORIZONTAL CONTROL SEE SURVEY BUREAU DRAWING S-610
  3. CONSTRUCT 3' OF 6" SEWER LINE LOCATED AS SHOWN ON PLAN PLUG END OF SEWER FOR FUTURE CONNECTION TO RAILROAD UNDER DRAIN SEWER PLACED 1" MIN. BELOW THE CORBEL

- MARKS
- BENCH
- R.B.M.\* 39-351A S.W. COR. RIVARD & WILKINS ELEV. 141.15
  - C.B.M.\* 13 / HYD. N.W. COR. WATSON & RIVARD ELEV. 144.69
  - C.B.M. SPIKE IN D.E. POLE W. SIDE RIVARD ELEV. 144.53
  - RIVARD 90' N. ERSKINE ELEV. 144.53
  - C.B.M. / HYD. N.W. COR. ELIOT & RIVARD ELEV. 146.78
- FOR INT. GRADE ASPH. ON CONC. SEE SHEET # 10
- FOR INT. GRADE SEE SHEET # 16
- FOR INT. GRADE SEE SHEET # 14
- FOR INT. GRADE SEE SHEET # 14

BOOK	LT 39C(G)
NO.	113 401
DATE	DEC 1978
LEVEL	CONTRACTOR
SCALE	HORIZONTAL 1" = 40'
	VERTICAL 1" = 2'



APPROVED BY	APPROVED
CHECKED BY	INDEX NO.
DESIGNED BY	4
ESTIMATE	39
PLAN	CONTRACT
GRADE	NO. PW 6622
FINAL	ASSIGNMENT
REVISIONS	NO. 78-14-15
	DATE AUG 11, 1980