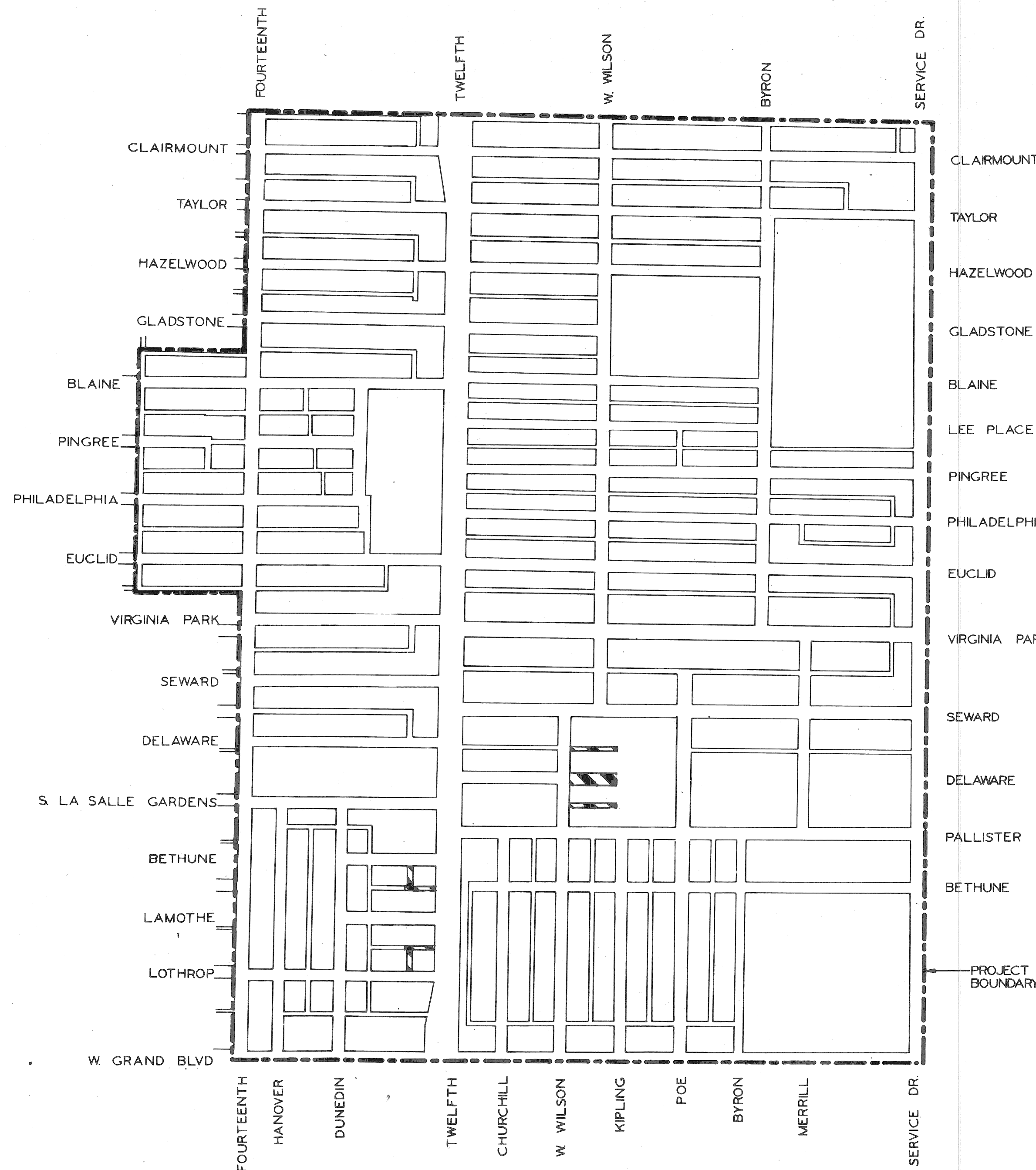


CITY OF DETROIT
DEPARTMENT OF PUBLIC WORKS
CITY ENGINEERS OFFICE

PLANS FOR PROPOSED
ALLEY PAVING, PAVEMENT REMOVAL
AND MISCELLANEOUS CONSTRUCTION
IN THE AREA BOUNDED BY
DUNEDIN - POE - LOTHROP - SEWARD
VIRGINIA PARK N.D.P. MICH. A-4-2
FOR
COMMUNITY AND ECONOMIC DEVELOPMENT DEPARTMENT



[Hatched Box] CONSTRUCTION AREA

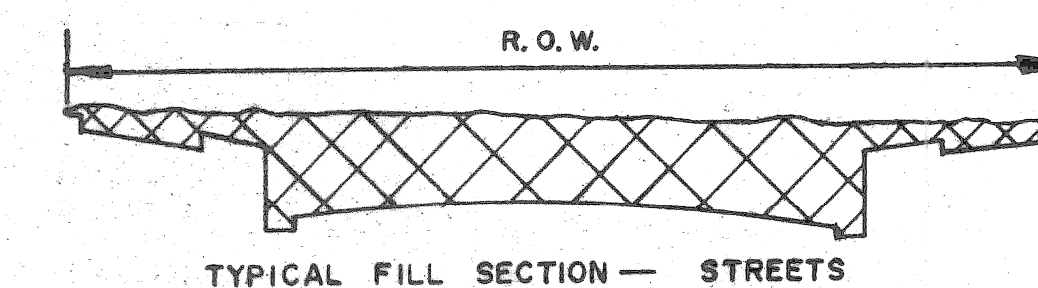
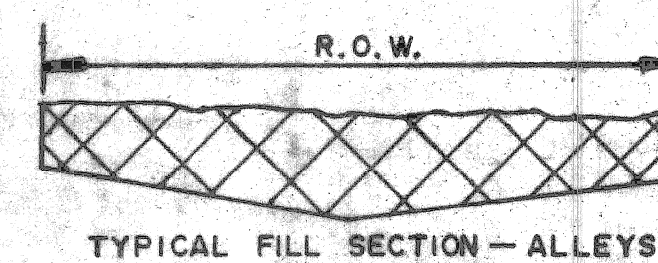
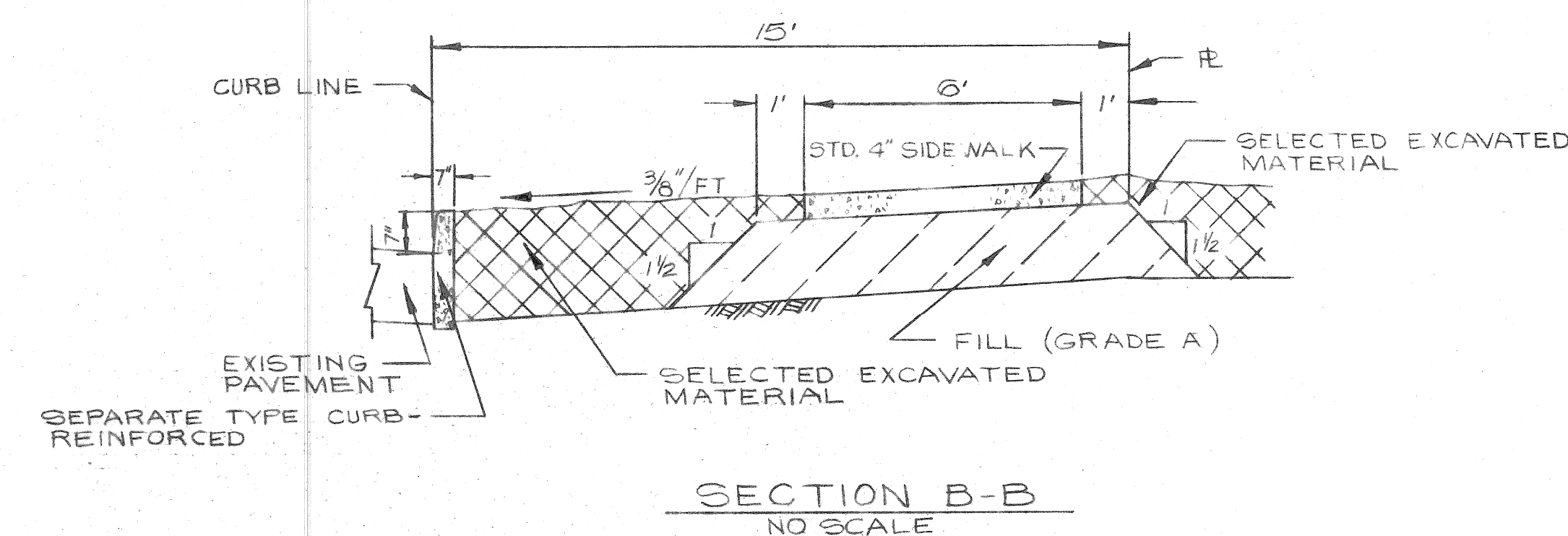
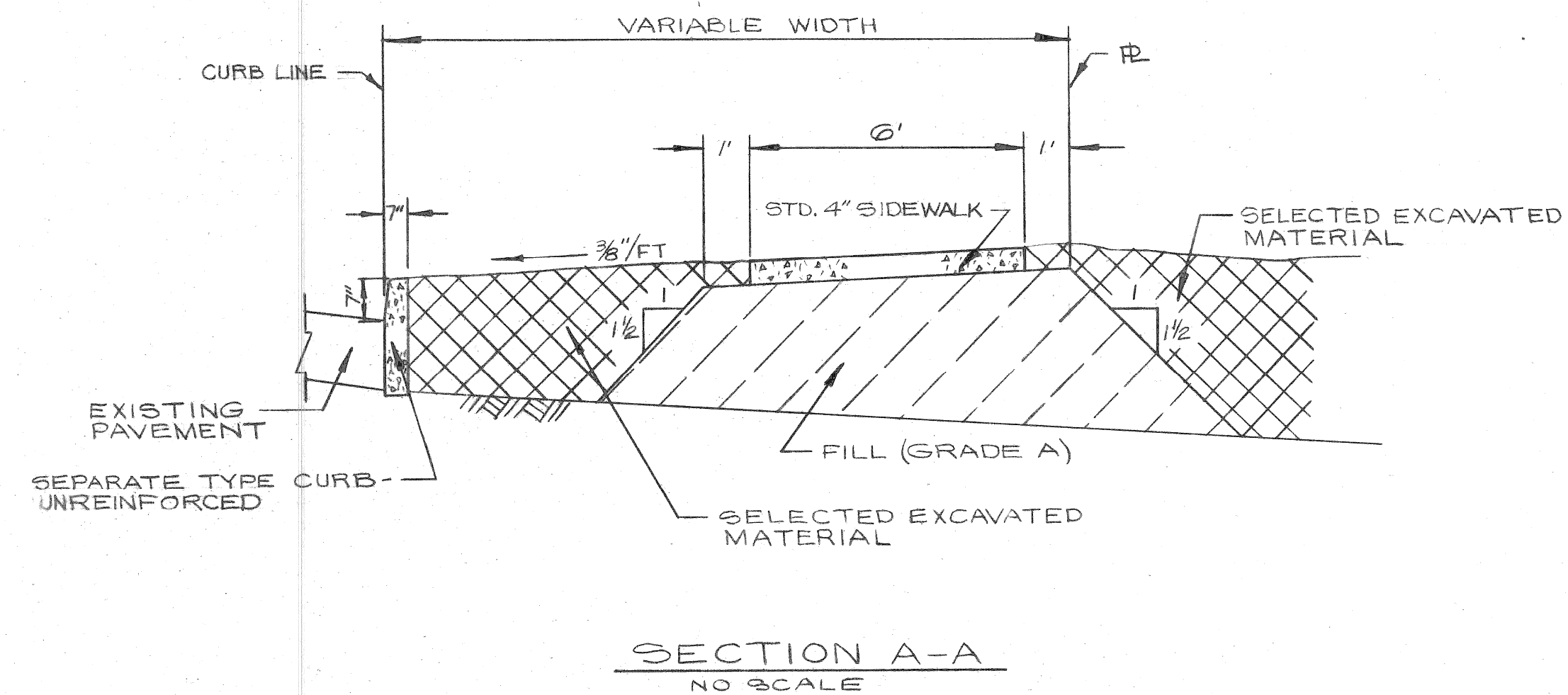
INDEX OF SHEETS

1. TITLE SHEET
2. QUANTITY AND SECTION SHEET
3. PAVING PLAN
4. REMOVAL AND UTILITY SHEET
- 5-6. SEWER ALTERATIONS

PROJECT ALLEY PAVING, PAVEMENT REMOVAL AND MISCELLANEOUS CONSTRUCTION IN THE AREA BOUNDED BY DUNEDIN-POE-LOTHROP-SEWARD	CONTRACT NO. <p style="text-align: center; font-size: 1.2em;">PW 6619</p>
PLANS PREPARED BY DEPARTMENT OF PUBLIC WORKS CITY ENGINEERS OFFICE	
RECOMMENDED FOR APPROVAL ENGINEER OF INSPECTION _____ DATE _____	RECOMMENDED FOR APPROVAL <i>Naim O. Kawaas</i> ENGINEER OF STREETS _____ DATE 7/29/80
APPROVED ASSISTANT CITY ENGINEER _____ DATE 7/29/80	APPROVED _____ DATE 7/29/80 CITY ENGINEER
DATE JULY 28, 1980	
DRWG. NO. 1 OF 6	

QUANTITIES					
NO.	DESCRIPTION	UNIT	SHEET #3	SHEET #4	TOTAL
1.	EXCAVATION	CYDS	667		667
2.	STREET PAVT. REM'L. - UNREINFORCED	SYDS	80	1022	1102
3.	ALLEY PAVT. REM'L.	SYDS	674	1217	1891
4.	SIDEWALK REMOVAL	SFT	785	2328	3113
5.	DRIVEWAY REMOVAL	SFT			100
6.	INT. CURB AND SIDEWALK REMOVAL	LFT	90		90
7.	NON-REINF CONC. REMOVAL	CYDS	7		7
8.	TREE REMOVAL 4"-12" DIA.	EA	1		1
9.	STUMP REMOVAL	EA	3		3
10.	FILL (GRADE A)	CYDS	410	22	432
11.	GRADING ABANDONED ALLEYS	SYDS	516	1217	1733
12.	GRADING ABANDONED STREETS	SYDS		200.0	2000
13.	MANHOLE ADJUSTMENT - CONCRETE SLAB	EA	1		1
14.	MANHOLE ABANDONMENT	EA	1	1	2
15.	MANHOLE RECONSTRUCT CONE	EA			1
16.	CATCH BASIN ABANDONMENT	EA		7	7
17.	CATCH BASIN SPECIAL ABANDONMENT	EA	1		1
18.	CATCH BASIN 18'X12" SPECIAL "Y"	EA	2		2
19.	SEWER - 12" PIPE C-76-III	LFT	129		129
20.	PAVEMENT - 6" UNIFORM CONCRETE	SYDS	954		954
21.	LONGITUDINAL DUMMY GROVE CONTRACTION JOINT	LFT	250		250
22.	SEPARATE TYPE CURB - REINFORCED	LFT	80		80
23.	SEPARATE TYPE CURB - NON-REINFORCED	LFT		98	98
24.	TEST CORES	EA	2		2
25.	SIDEWALK - 4" STANDARD *	SFT	578	780	1356
26.	SIDEWALK - 6" STANDARD *	SFT	240		240
27.	BULKHEAD FROM MANHOLE	EA		2	2
28.	BULKHEAD AND EXCAVATION	EA		5	5
29.	LITTER REMOVAL	CYDS			50
30.	CLEANING STRUCTURES	EA			1
31.	MAINTAINING TRAFFIC	LUMP SUM			
SEWER ALTERATIONS - FOR SEWER ITEMS SEE SHEET 6 OF 6					

* CONSTRUCTION ONLY



REFERENCE DRAWINGS		DESIGNED BY	APPROVED:	<p align="center">CITY OF DETROIT CITY ENGINEERING DIVISION - EPMD BUREAUS OF STREETS AND HIGHWAYS</p> <p align="center">FOR COMMUNITY AND ECONOMIC DEVELOPMENT DEPARTMENT</p>	<p align="center">ALLEY PAVING, PAVEMENT REMOVAL AND MISCELLANEOUS CONSTRUCTION IN THE AREA BOUNDED BY DUNEDIN - POE - LOTHROP - SEWARD</p> <p align="center">QUANTITY AND SECTION SHEET</p>	SHEET 2 OF 6 SHEETS
		DRAWN BY <i>D. C. U.</i>	<i>Ham O'Kaw</i> ENGINEER OF STREETS			CONTRACT NO. PW 6619
		TRACED BY				ASSIGNMENT NO. 80-14-04 & 80-14-05
		CHECKED BY <i>TALLEY</i>				DATE 7-28-80
COORD	DESCRIPTION	DRN	CK'D	AP'D	DATE	
REVISIONS LOCATED BY COORDINATES ON SHEET						

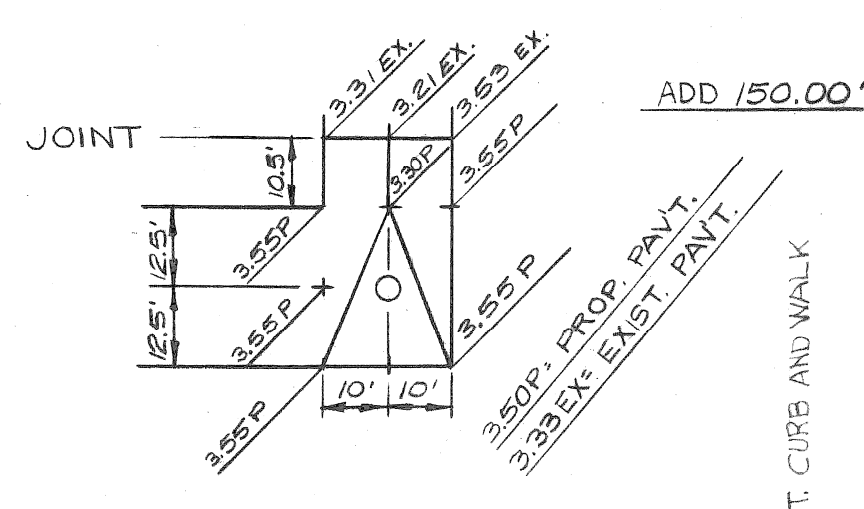
NOTE - APPROXIMATELY 158 CYDS OF FILL (EARTH MATERIAL) ARE REQUIRED FOR THIS SHEET.

CALL MISS DIG 48 HOURS PRIOR TO CONSTRUCTION 647-7344

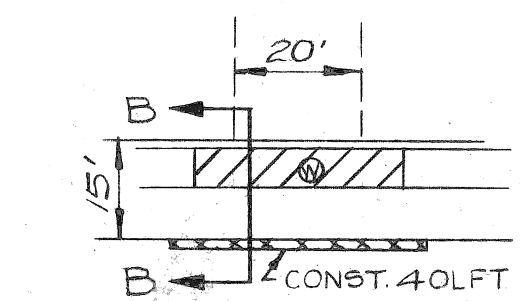
SCALE	HORIZONTAL 1" = 40'	VERTICAL 1" = 2'
BOOK	LL 21A (2)	1-G
NO.	PG	DATE 3-3-80
BEFORE STARTING CONSTRUCTION... CONTRACTOR MUST CHECK WITH UTILITIES FOR LOCATIONS OF EXISTING STRUCTURES WHETHER OR NOT INDICATED ON PLANS.		

NOTE - FOR SYMBOLS (A) ETC. SEE STANDARD DETAIL DRAWING NO. C-111

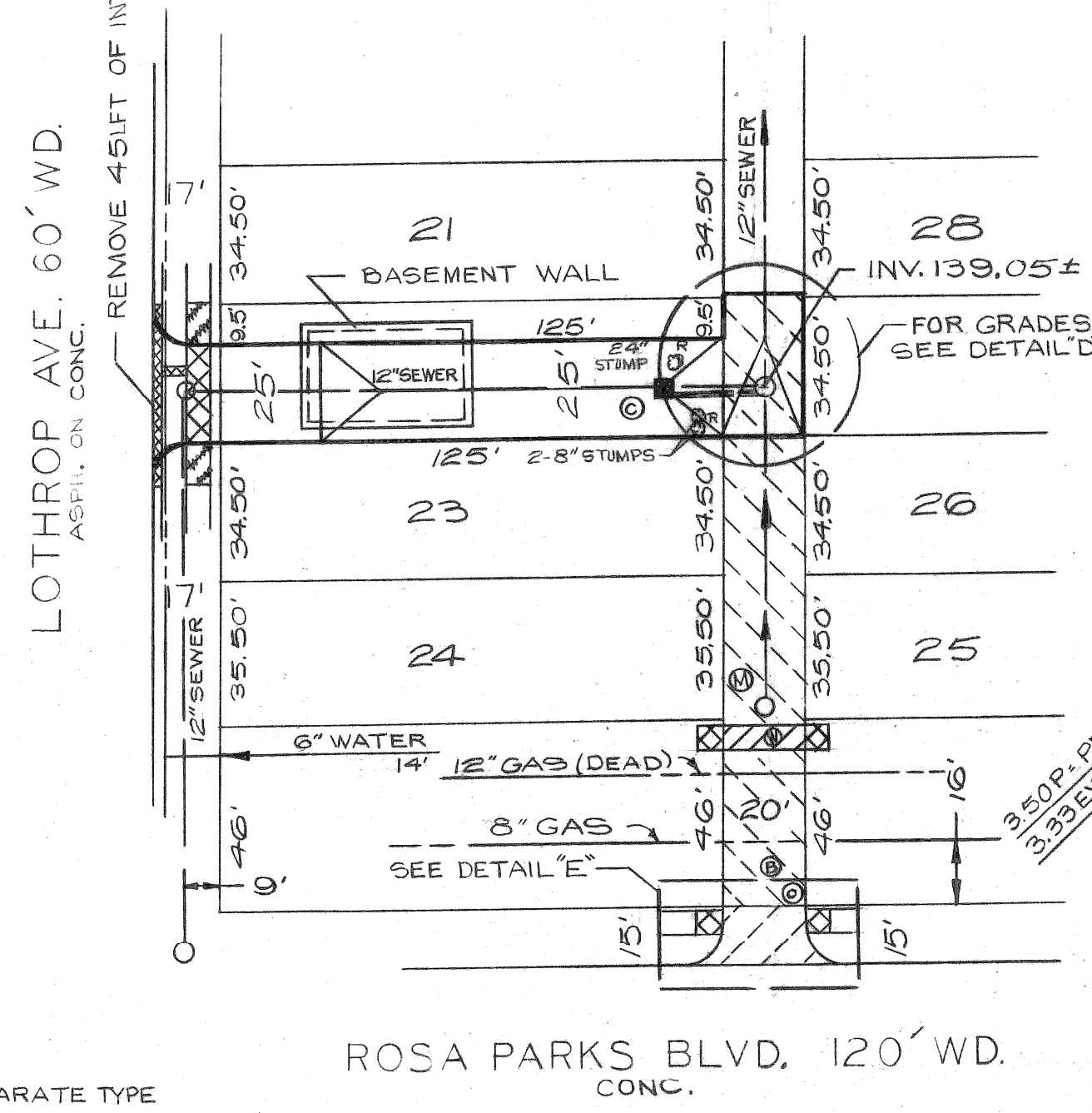
BENCH MARKS	ELEV
F.B.M. #31-251A N.E. COR. GD. BLVD. & WOODROW WILSON	150.967
F.B.M. #31-251B N.E. COR. GD. BLVD. & ROSA PARKS BLVD.	151.068
C.B.M. #HYD. N.W. COR. ROSA PARKS BLVD. & BETHUNE	156.26
C.B.M. #HYD. S.W. COR. ROSA PARKS BLVD. & LA MOTHE	155.01
C.B.M. #HYD. S.W. COR. ROSA PARKS BLVD. & LOTHROP	155.32



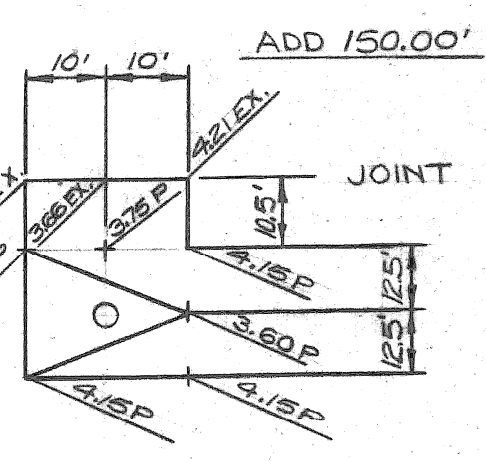
DETAIL 'D' NO SCALE



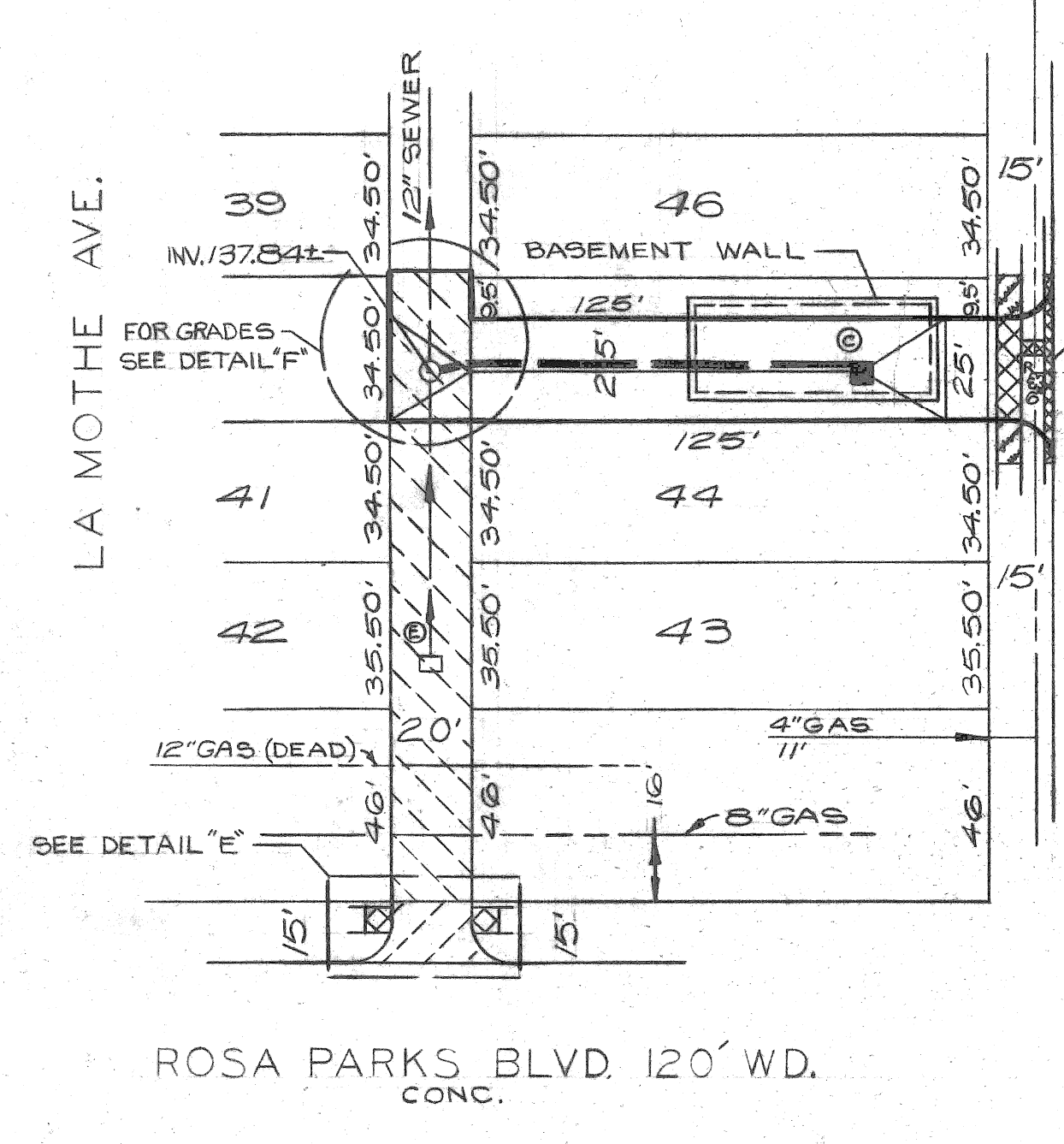
DETAIL 'E' NO SCALE



LA MOTHE AVE.

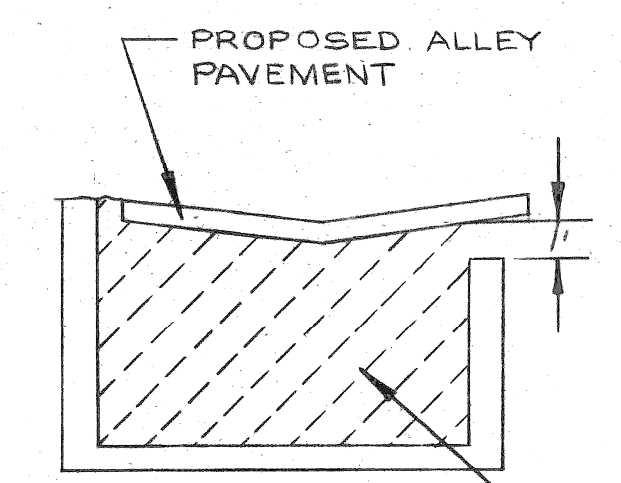


DETAIL 'F' NO SCALE

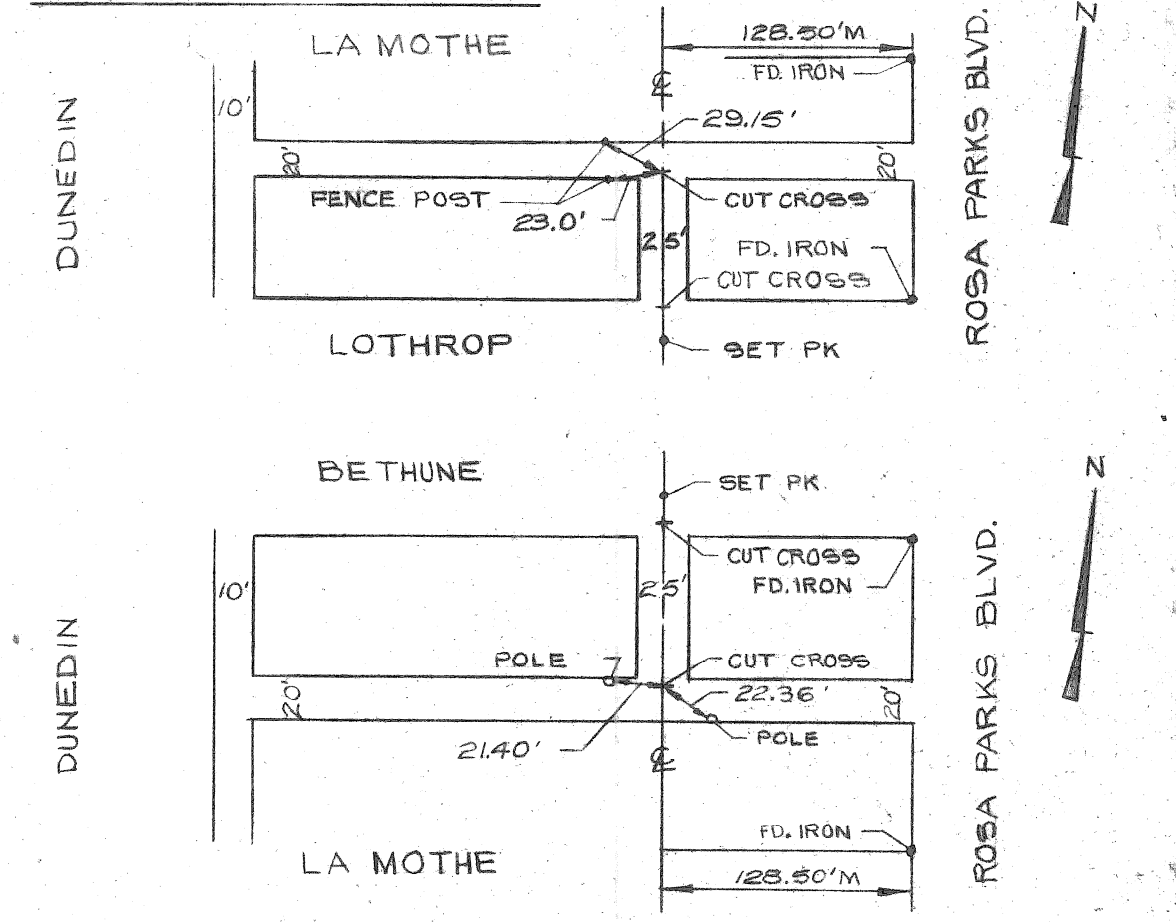


BETHUNE AVE.

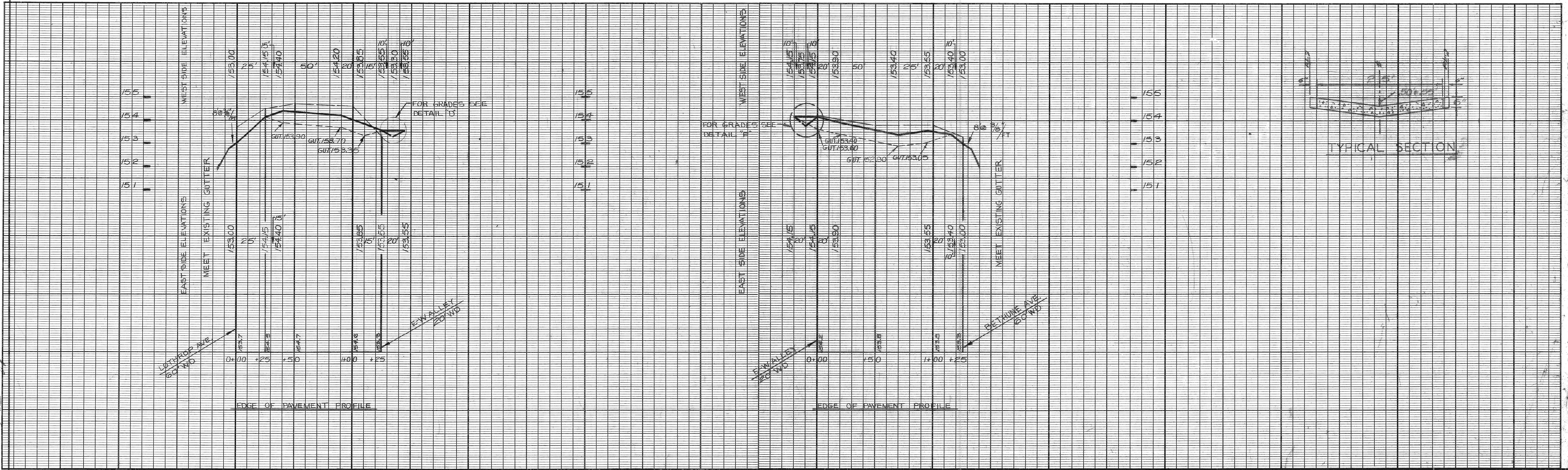
- LEGEND**
- [Hatched Box] STREET PAV'T. REMOVAL-UNREINFORCED
 - [Hatched Box] ALLEY PAV'T. REMOVAL
 - [Hatched Box] SIDEWALK REMOVAL
 - [Hatched Box] DRIVEWAY REMOVAL
 - [Hatched Box] CONSTRUCT SIDEWALK 4" STANDARD
 - [Hatched Box] CONSTRUCT SIDEWALK 6" STANDARD
 - [Hatched Box] BUILDING WITH BASEMENT
 - [Circle with X] MANHOLE ADJUSTMENT- CONCRETE SLAB
 - [Circle with X] CONSTRUCT STD. CATCH BASIN 18"x12" SPECIAL"
 - [Circle with X] CONSTRUCT SEWER PIPE
 - [Circle with X] TREE OR STUMP REMOVAL
 - [Circle with X] CATCH BASIN ABANDONMENT
 - [Circle with X] CATCH BASIN SPECIAL ABANDONMENT
 - [Circle with X] MANHOLE ABANDONMENT



IF BASEMENT EXISTS REMOVE RUBBLE FROM BASEMENT AND FILL WITH GRADE A MATERIAL



- NOTES:**
1. FOR UTILITY LEGEND SEE STD. DRAWING C-902-A
 2. REPLACE SIDEWALK AS SHOWN ON THE PLANS OR AS DIRECTED BY THE ENGINEER
 3. FOR QUANTITIES SEE SHEET #2
 4. FOR SEPARATE TYPE CURB DETAIL SEE STD. DRAWING C-4381
 5. FOR TYPICAL SECTIONS SEE SHEET #2
 6. ALL ALLEY RADII ARE 10' UNLESS OTHERWISE NOTED.

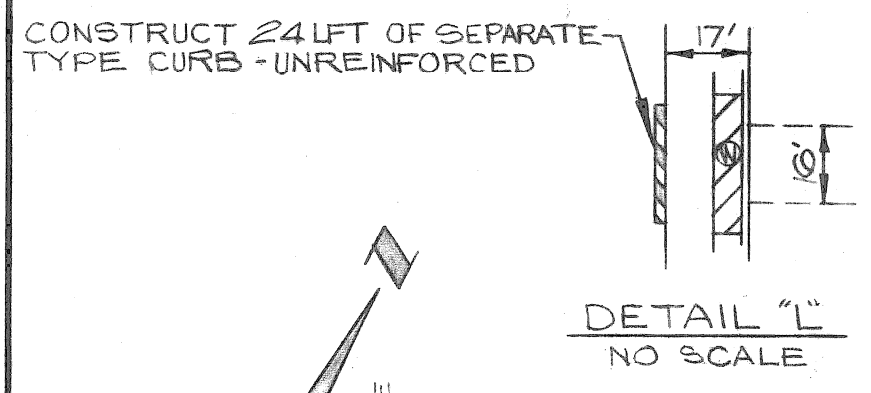


Sewer Approved
7/21/80
D.D.W.

PLAN	BY D.G.U.	CHECKED BY D.G.U.	APPROVED: [Signature]
GRADE	D.G.U.		ENGINEER OF STREETS
ESTIMATE	D.G.U.		
DESCRIPTION	DRN	CK	D
REVISIONS	DATE		

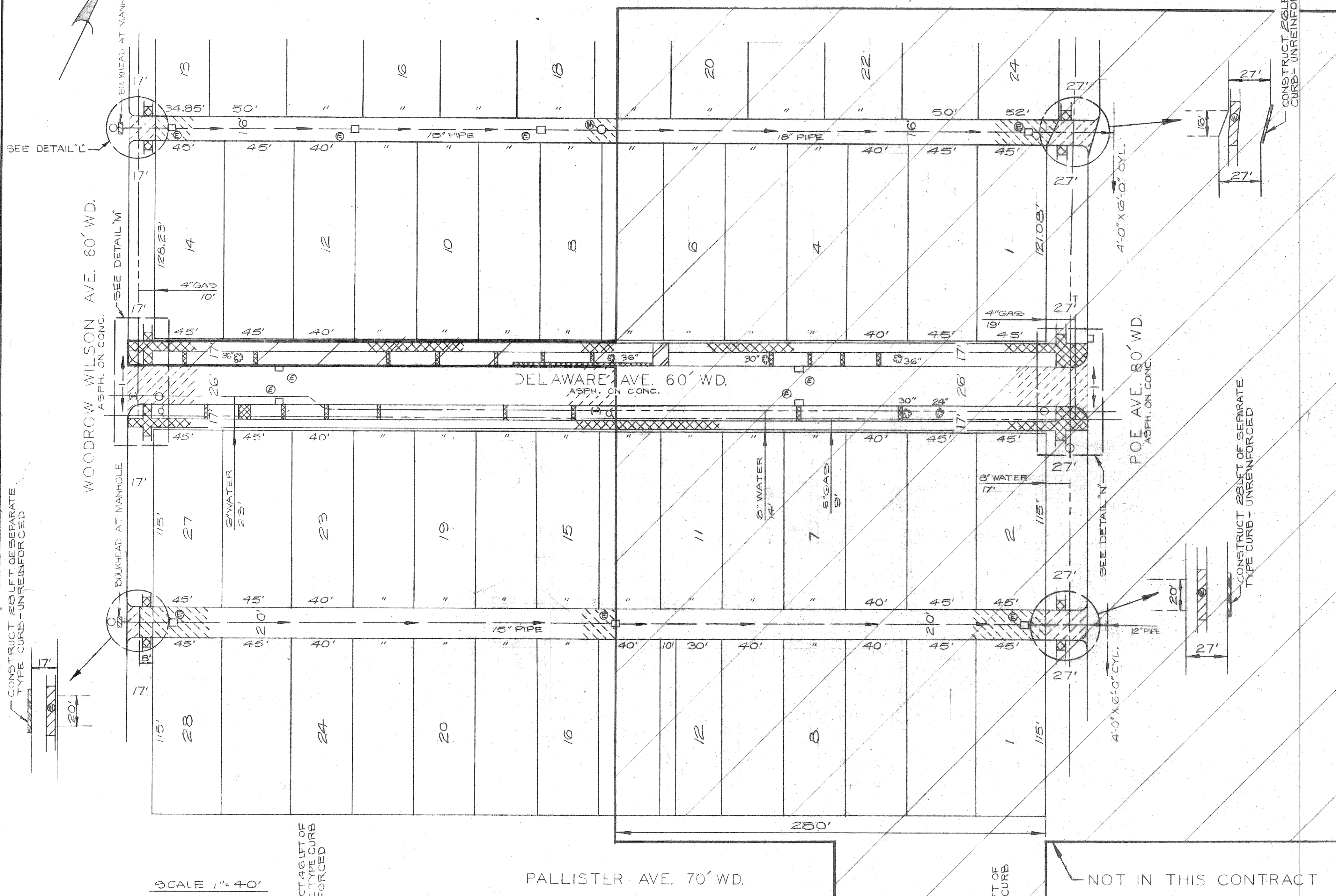
CITY OF DETROIT
CITY ENGINEERING DIVISION D.P.W.
BUREAUS OF STREETS AND HIGHWAYS
FOR
COMMUNITY AND ECONOMIC DEVELOPMENT DEPARTMENT

PAVING OF 2 N-S ALLEYS AND MISCELLANEOUS CONSTRUCTION IN THE AREA BOUNDED BY W- DUNEDIN E- ROSA PARKS BLVD. S- LOTHROP N- BETHUNE	
INDEX NO.	SHEET 3 OF 6 SHEETS
CONTRACT NO.	PW 6619
ASSIGNMENT NO.	80-14-04
DATE	7-28-80

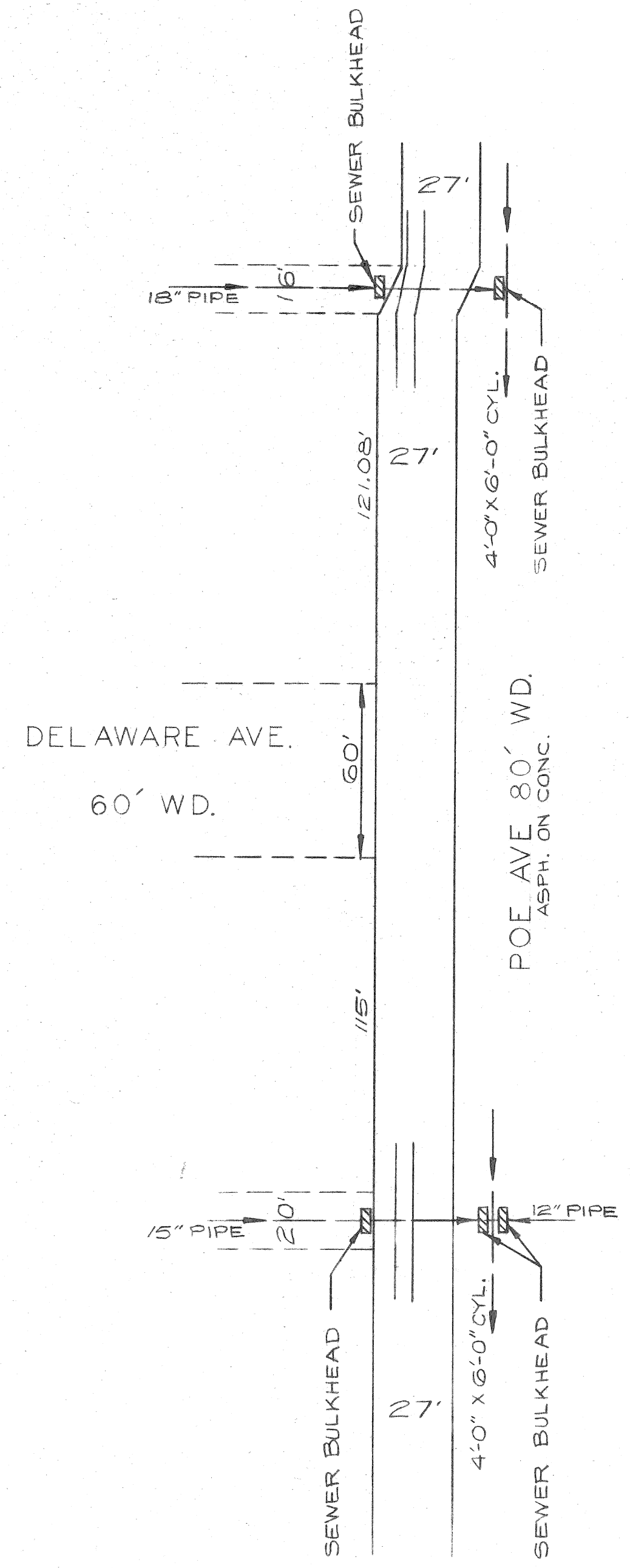
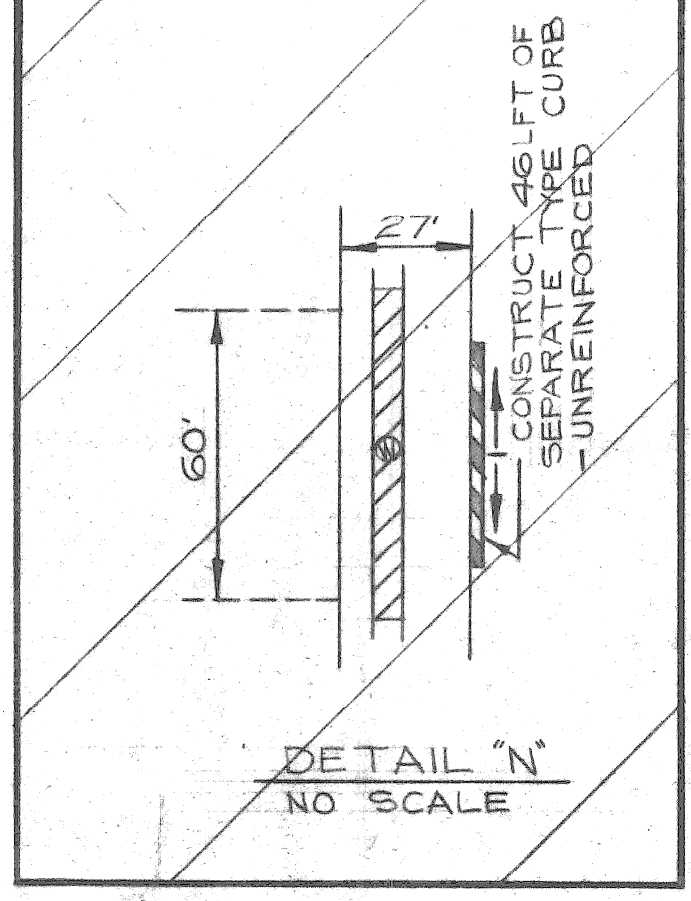
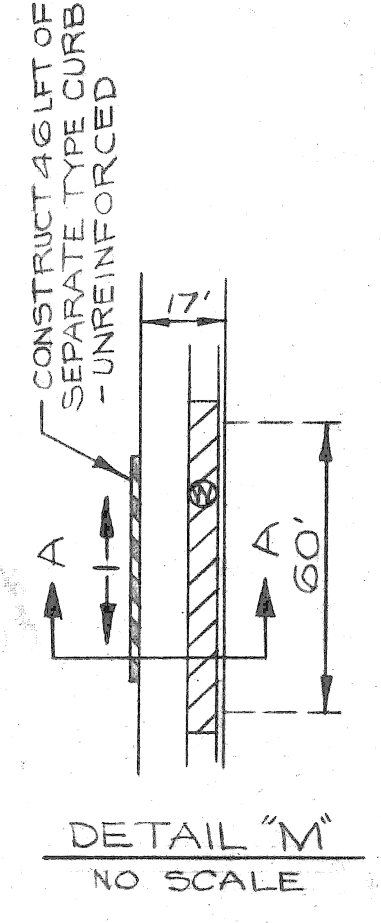


NOTE—
APPROXIMATELY 1183 CYDS. OF
SELECTED EXCAVATED MATERIAL
REQUIRED FOR THIS SHEET.

FOR NOTES SEE SHEET # 10
FOR LEGEND SEE SHEET # 10



SCALE 1" = 40'



BEFORE STARTING CONSTRUCTION - CONTRACTOR MUST CHECK WITH UTILITIES FOR LOCATIONS OF EXISTING STRUCTURES WHETHER OR NOT INDICATED ON PLANS

CALL MISS DIG
48 HOURS PRIOR TO
CONSTRUCTION 647-7344

DESIGNED BY	D. G. U.
DRAWN BY	D. G. U.
TRACED BY	
CHECKED BY	TALLEY
APPROVED:	<i>Y. J. O'Connell</i> ENGINEER OF STREETS

CITY OF DETROIT
CITY ENGINEERING DIVISION - D.P.W.
BUREAUS OF STREETS AND HIGHWAYS
FOR
COMMUNITY AND ECONOMIC DEVELOPMENT DEPARTMENT

ALLEY PAVING, PAVEMENT REMOVAL
AND MISCELLANEOUS CONSTRUCTION
IN THE AREA BOUNDED BY
DUNEDIN - POE - LOTHROP - SEWARD
REMOVAL AND UTILITY SHEET

SHEET	4	OF	6	SHEETS
CONTRACT NO.	PW 6619			
ASSIGNMENT NO.	80-14-05			
DATE	7-28-80			

SEWER BULKHEADS

SEWER BULKHEADS SHALL BE CONSTRUCTED OF BRICK OR CONCRETE TO THE SPECIFIED THICKNESS AS SHOWN ON THE PLANS OR AS INDICATED BY THE ENGINEER.

BRICK BULKHEADS

THE SURFACE OF CONTACT OF THE SEWER WALL WITH THE BULKHEAD SHALL BE ROUGHENED BY BUSH HAMMERING OR CHISELING AND THEN CLEANED JUST PRIOR TO THE BULKHEAD CONSTRUCTION. SUCH BULKHEADS SHALL BE VERTICAL WITH ALTERNATE HEADER AND STRETCHER COURSES LAID IN MORTAR. VERTICAL JOINTS IN ADJACENT COURSES SHALL BE STAGGERED. BRICK SHALL BE LAID WITH FULL MORTAR JOINTS. ALL AVAILABLE BEARING AREAS SHALL BE COVERED WITH MORTAR SPREAD IN AN EVEN LAYER WITHOUT SPLITTING OR FURROWING, AND ALL VERTICAL AND INTERIOR JOINTS SHALL ALSO BE SOLIDLY FILLED WITH MORTAR. THE COURSES SHALL BE LAID EVEN. BULKHEADS SHALL BE CONSTRUCTED AS PLUMB AS IS PRACTICAL.

CONCRETE BULKHEADS

ALL BULKHEADS SHALL BE CONSTRUCTED WITH GRADE "A" CONCRETE TO A THICKNESS OF AT LEAST ONE-THIRD THE DIAMETER OF THE PIPE BUT IN NO CASE LESS THAN TWELVE INCHES. SEWER WALLS SHOULD BE BRUSH CLEANED BEFORE CONCRETE BULKHEADS ARE POURED. (THAT IS ALL THE SLUDGE AND DEBRIS SHOULD BE OUT OF THE WAY)

DETROIT EDISON COMPANY
PHONE: 237-8000

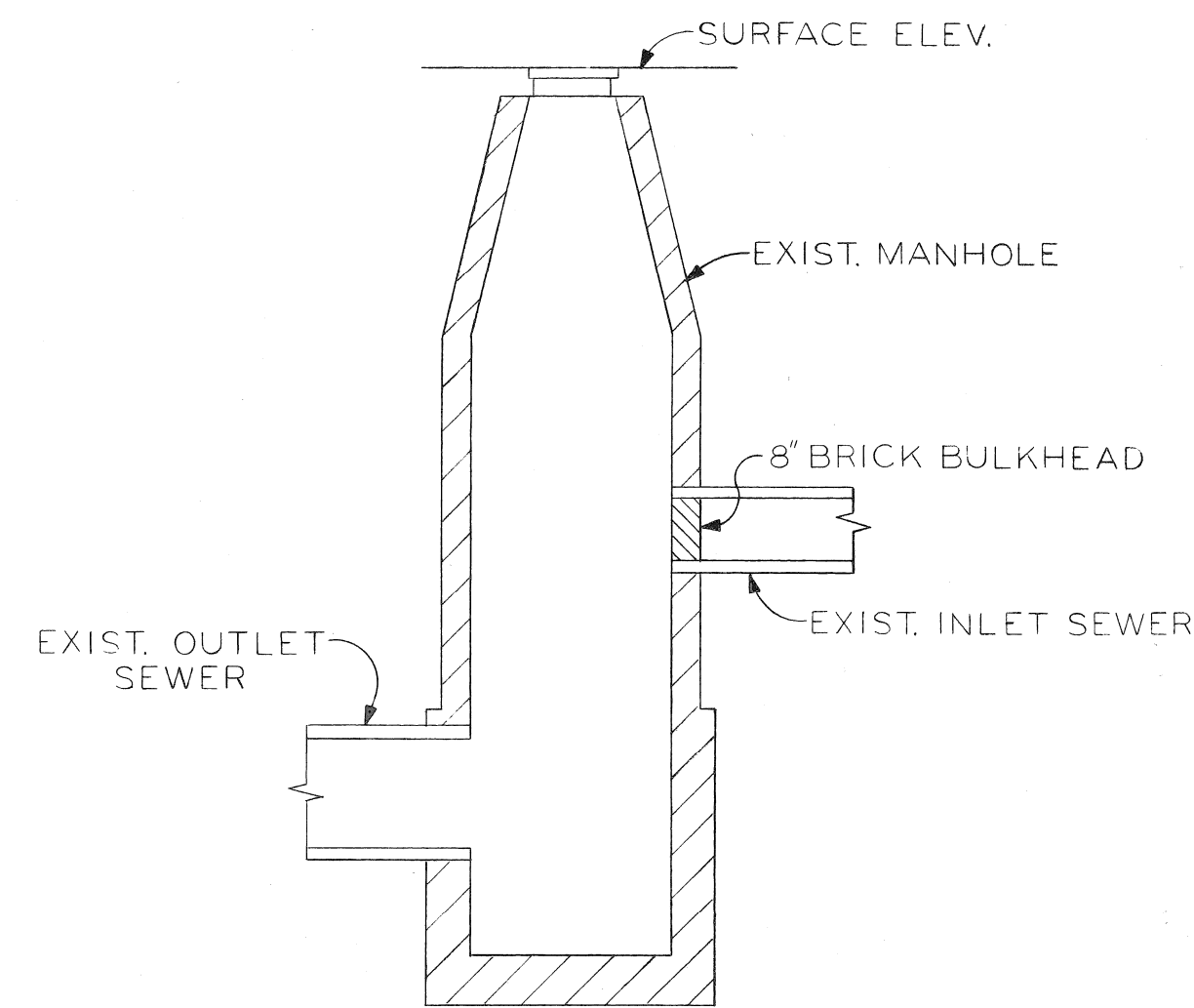
MICHIGAN CONSOLIDATED GAS COMPANY
PHONE: 965-8000

MICHIGAN BELL TELEPHONE COMPANY
PHONE: 372-8703

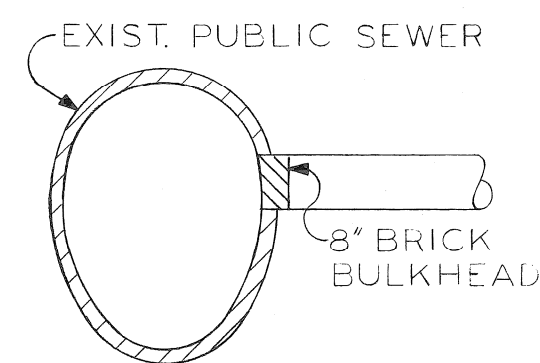
PUBLIC LIGHTING COMMISSION
PHONE: 875-0972

GENERAL NOTES

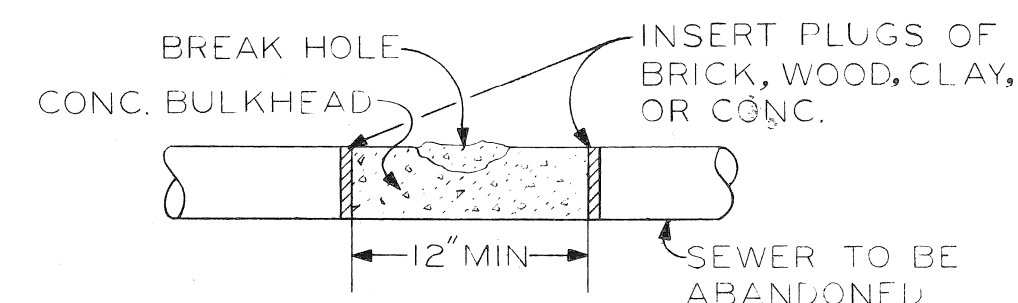
1. IN COMPLIANCE WITH PUBLIC ACT 53 OF THE STATE OF MICHIGAN (EFFECTIVE AUG. 1, 1974) THE CONTRACTOR SHALL NOTIFY IN ADVANCE OF CONSTRUCTION, ALL PUBLIC AND PRIVATE OWNERS HAVING EXISTING FACILITIES IN OR, NEAR THE IMMEDIATE WORKING AREA. FOR CONVENIENCE THE KNOWN UTILITY OWNERS ARE LISTED ON THIS DRAWING. THIS LISTING DOES NOT, HOWEVER, RELIEVE THE CONTRACTOR OF THE RESPONSIBILITY OF VERIFYING UTILITY LOCATIONS AND NOTIFYING ALL UTILITY OWNERS AND MISS-DIG. (PHONE: 482-7171 IN AREA CODE 800.)
2. LOCATIONS OF EXISTING CATCH BASIN DRAINS ARE APPROXIMATE.
3. UTILITIES CROSSING THE SEWERS TO BE CONSTRUCTED IN OPEN CUT ARE SHOWN IN PROFILE. ELEVATIONS AND LOCATIONS ARE APPROXIMATE.
4. VERIFY EXISTING INVERT ELEVATIONS PRIOR TO START OF CONSTRUCTION.



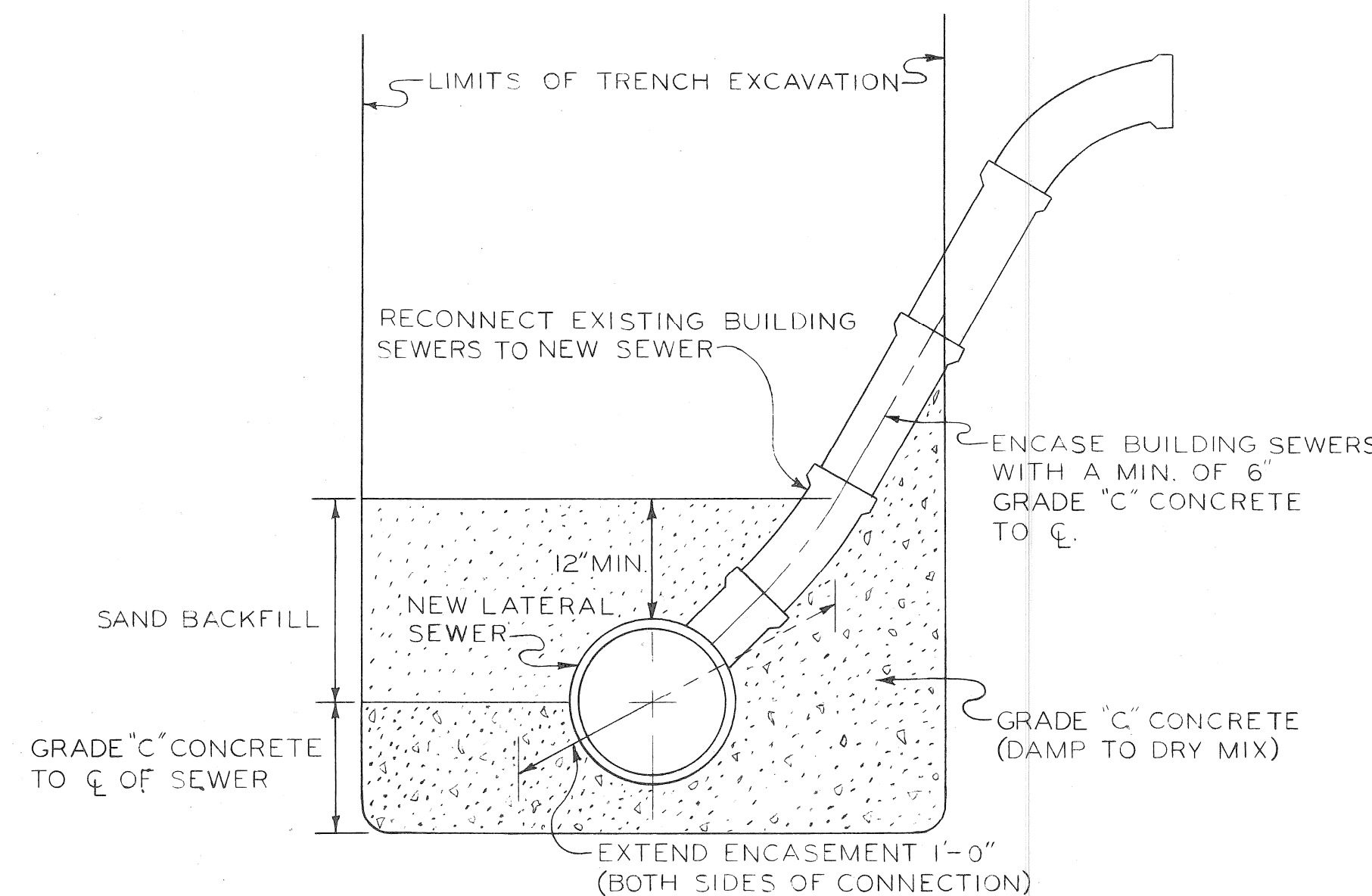
BULKHEAD CONSTRUCTED FROM WITHIN MANHOLE
NO SCALE



TYPICAL CROSS SECTION OF BULKHEAD CONSTRUCTED FROM WITHIN THE SEWER
NO SCALE



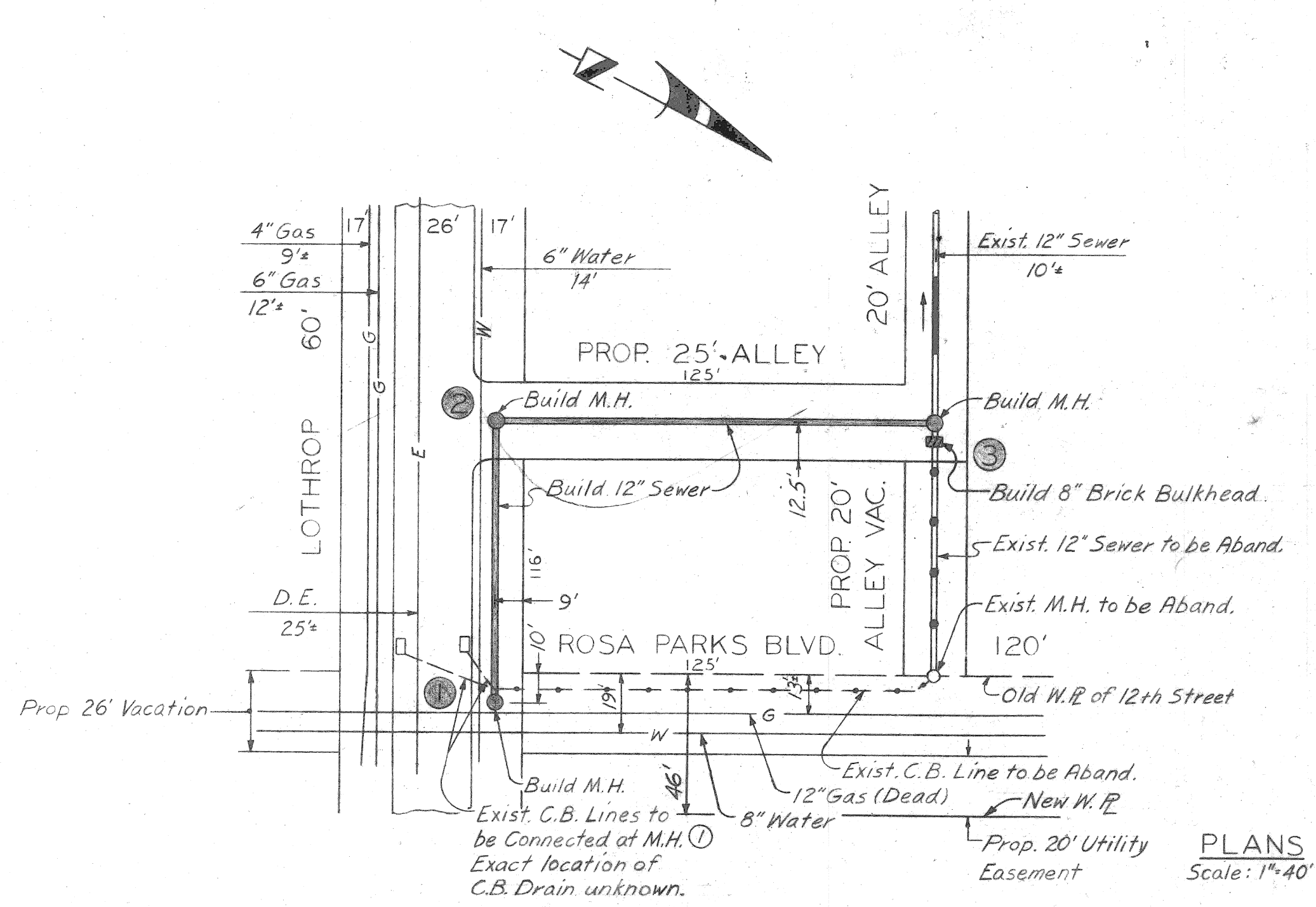
TYPICAL DETAIL OF BULKHEAD CONSTRUCTED AND POURED FROM OUTSIDE SEWER AFTER EXCAVATING TO SEWER DEPTH
NO SCALE



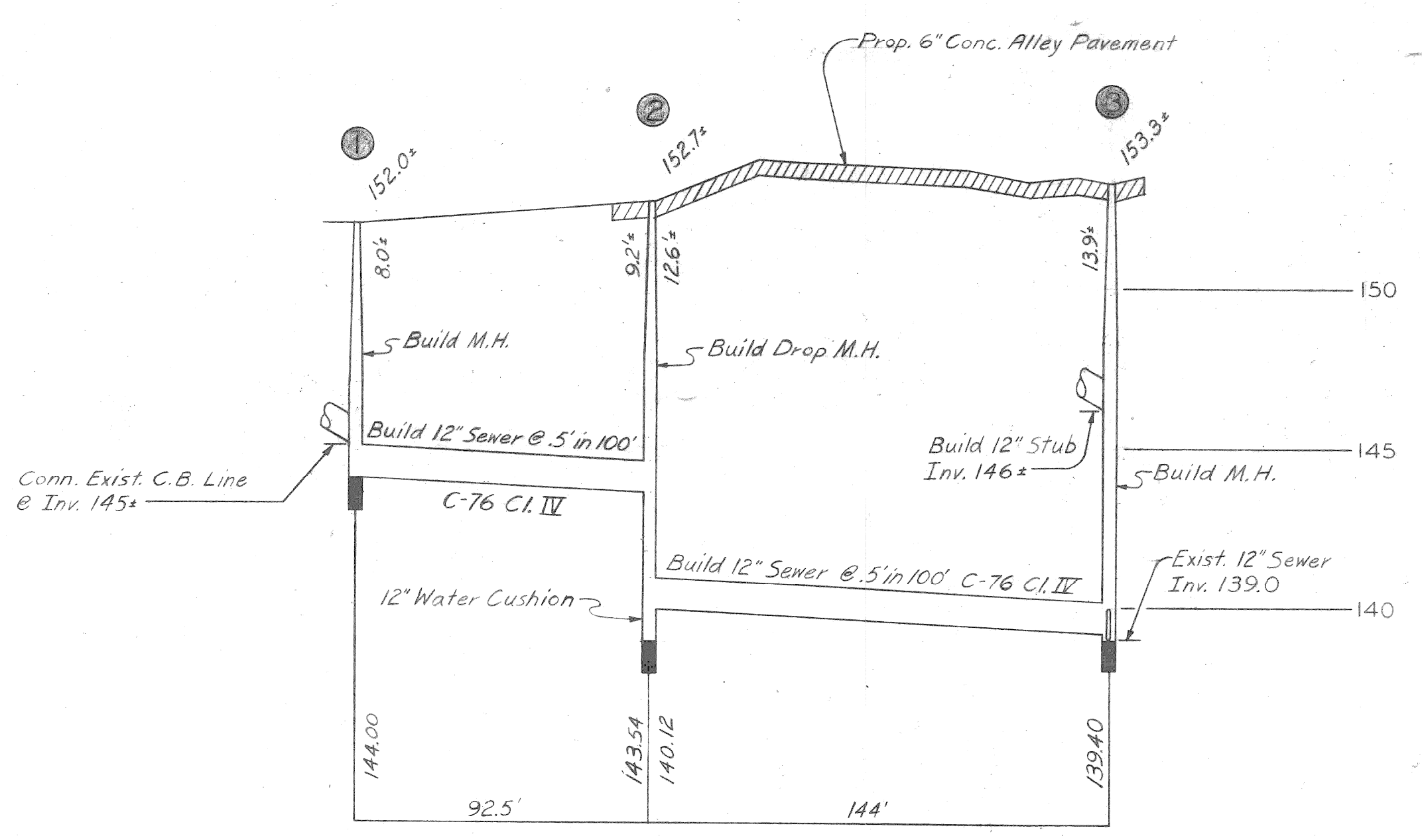
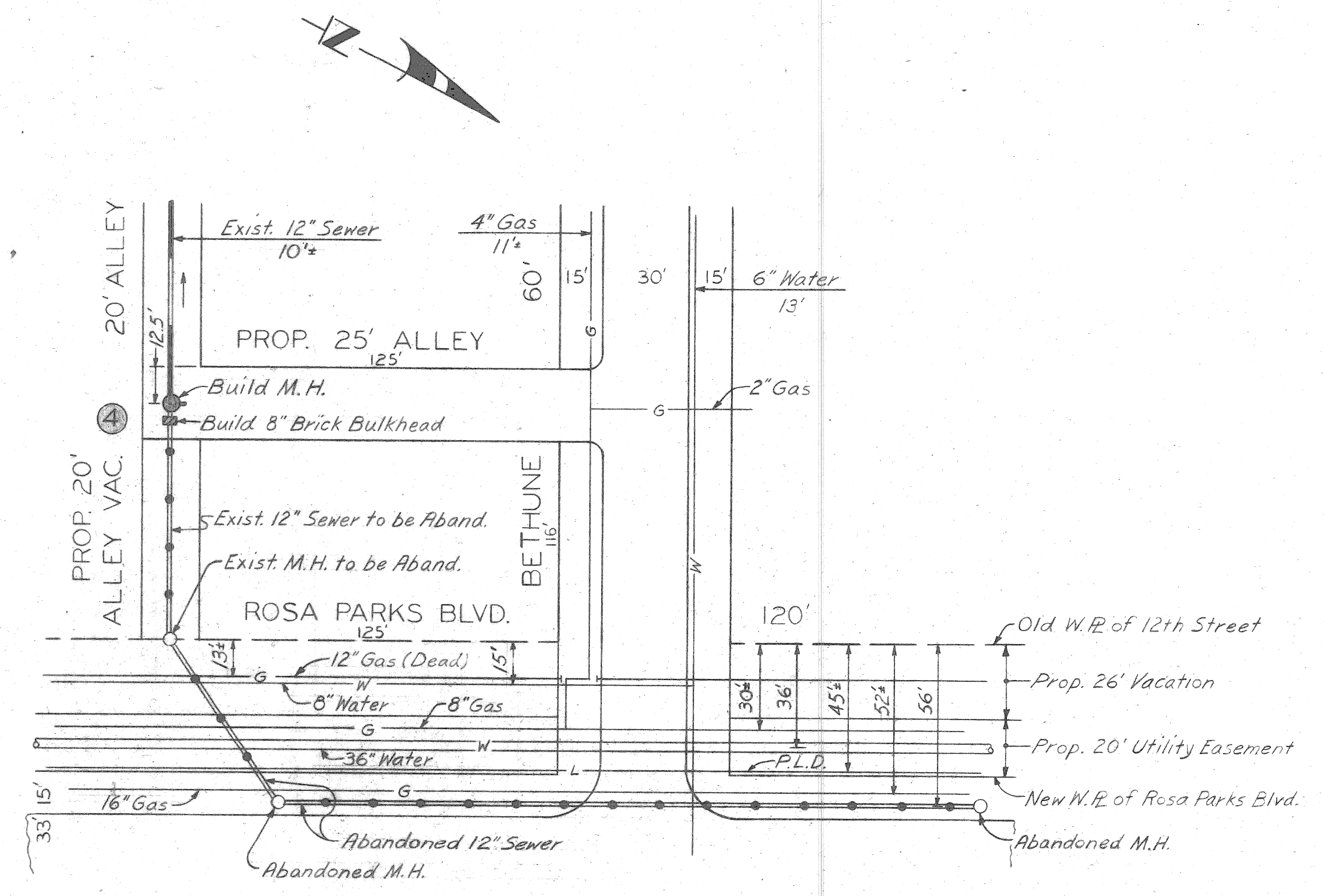
DETAIL OF WYE CONNECTION
NO SCALE

SHEET 5 OF 6 SHEETS

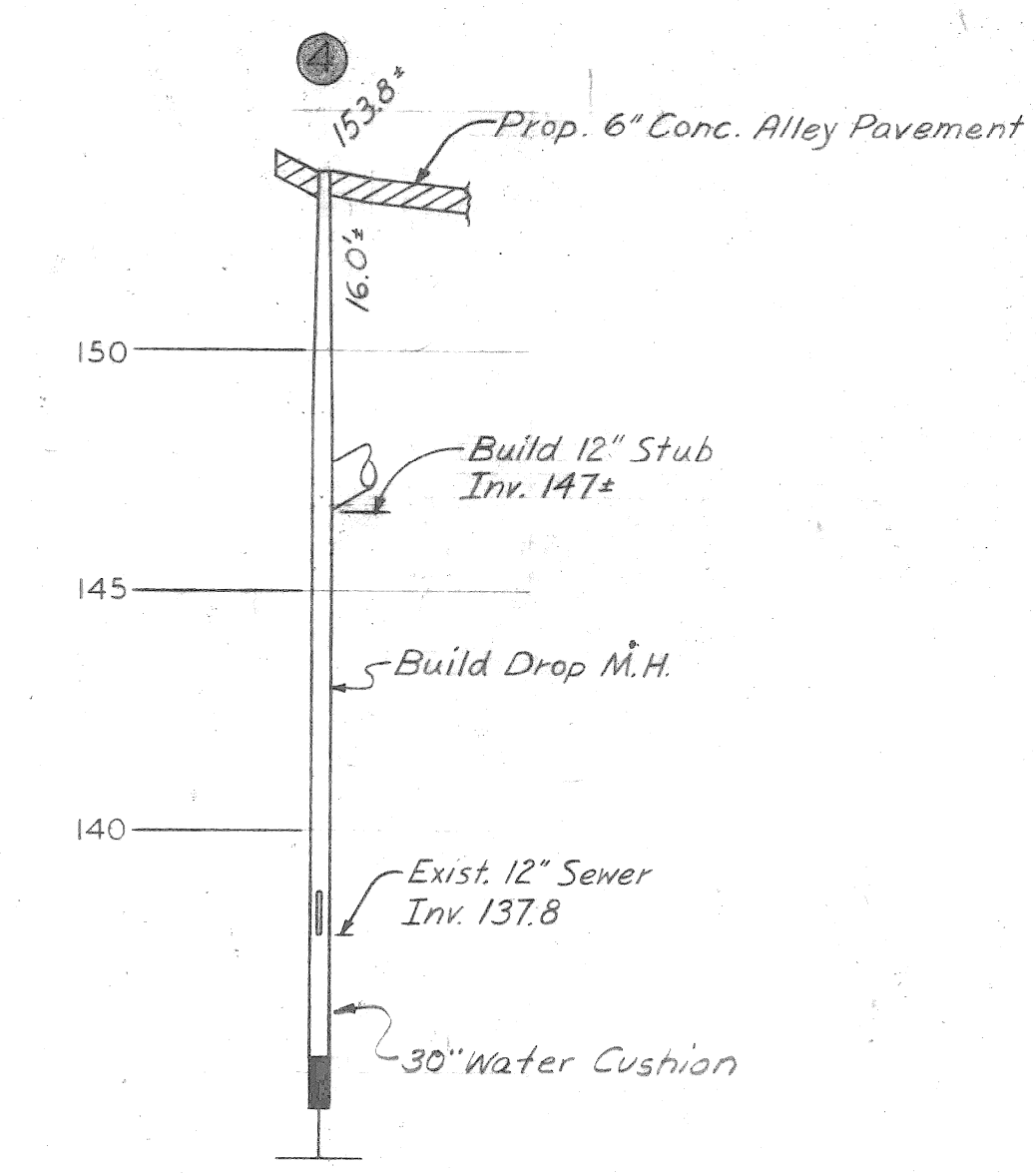
DESIGNED BY		APPROVED		PAVING OF 2 N-S ALLEYS & MISCELLANEOUS CONSTRUCTION IN THE AREA BOUNDED BY W-DUNEDIN E-ROSA PARKS BLVD. S-LOTHROP N-BETHUNE SEWER ALTERATIONS - PLAN & PROFILE				CITY OF DETROIT WATER AND SEWERAGE DEPARTMENT ENGINEERING DIVISION				M.D.P.H. PERMIT NO.									
DRAWN BY <i>William Baker Jr.</i>		<i>D. Seiler</i> DIRECTOR OF ENGINEERING										FED. REF. NO.		CONTRACT NO. PW 6619							
CHECKED BY <i>DWD</i>		DATE		SCALE AS SHOWN				SECTION MAP		TOWN		RANGE		SECTION		PORTION CODE		WORK ORDER NO.		D-	
CO-OR.		DESCRIPTION REVISIONS		APRVD.		DATE		2		A		H		J		S-136-7323					



PLANS
Scale: 1"=40'



PROFILES
Hor. 1"=40'
Scale: Vert. 1"=4'



<table border="1"> <tr> <td>F</td> <td></td> <td></td> <td></td> </tr> <tr> <td>E</td> <td></td> <td></td> <td></td> </tr> <tr> <td>D</td> <td></td> <td></td> <td></td> </tr> <tr> <td>C</td> <td></td> <td></td> <td></td> </tr> <tr> <td>B</td> <td></td> <td></td> <td></td> </tr> <tr> <td>A</td> <td></td> <td></td> <td></td> </tr> </table>				F				E				D				C				B				A				DESIGNED BY <i>W.D.</i> DRAWN BY <i>William Baker Jr. 4-2-80</i> CHECKED BY <i>J.C. Duka 8-10-80</i> ENGINEER - WASTEWATER SYSTEM		APPROVED <i>J.L. Carethers</i> 4/10/80 HEAD ENGINEER DIVISION ENGINEER		PAVING OF 2 N-S ALLEYS & MISCELLANEOUS CONSTRUCTION IN THE AREA BOUNDED BY W-DUNEDIN E-ROSA PARKS BLVD. S-LOTHROP N-BETHUNE SEWER ALTERATIONS - PLAN & PROFILE SCALE: AS SHOWN				CITY OF DETROIT WATER AND SEWERAGE DEPARTMENT ENGINEERING DIVISION				M.D.P.H./D.N.R. PERMIT NO. FED. REF. NO. CONTRACT NO. PW6619 FILE NO.	
F																																									
E																																									
D																																									
C																																									
B																																									
A																																									
DESCRIPTION REVISIONS CHK'D APRVD. DATE				SECTION MAP 2 1 - A		TOWN RANGE SECTION PORTION CODE		WORK ORDER NO. S-136-7323		SHEET 6 OF 6 SHEETS D-																															