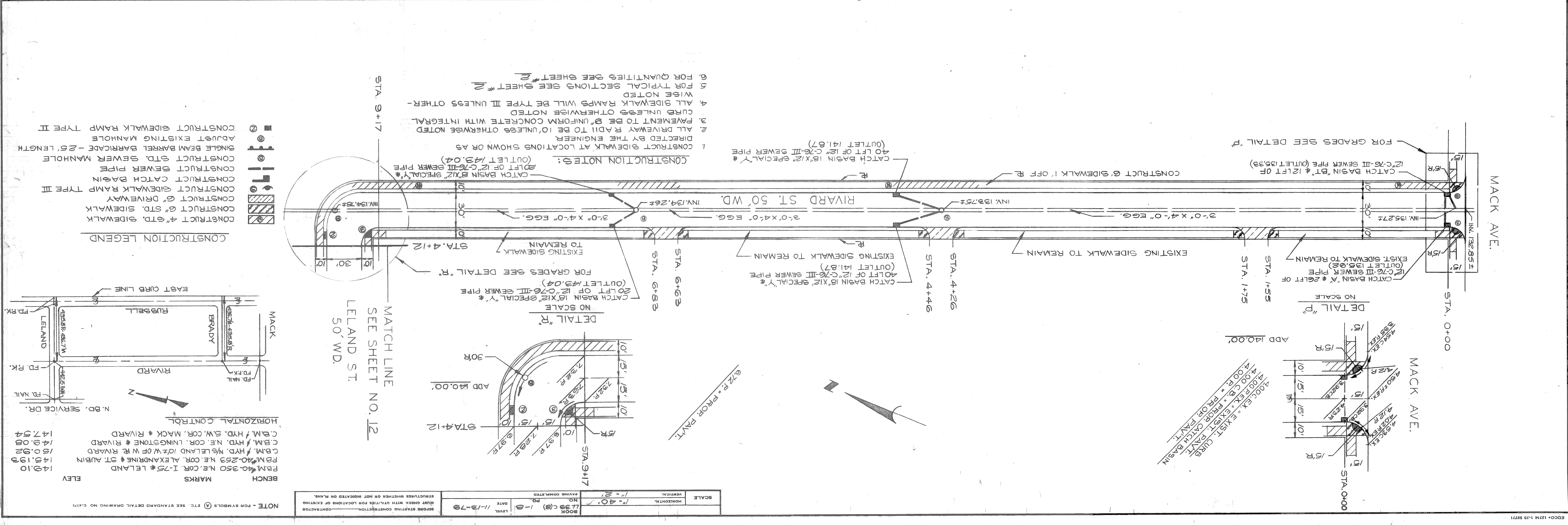
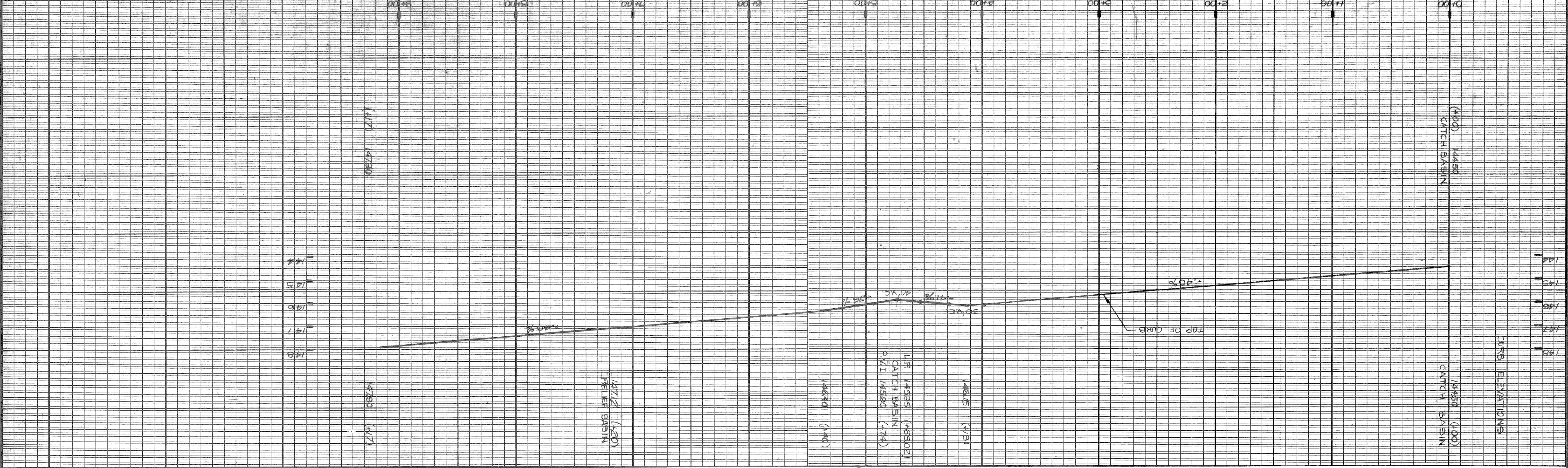


Sever Design  
10/21/80

DATE 10-16-80		INCHES 3/8"		SHEET 11 OF 34 SHEETS		CONTRACT PW 6614		ASSIGNMENT 79-14-15	
NO. 39		NO. 4		NO. 11		NO. 11		NO. 11	
NO. 39		NO. 4		NO. 11		NO. 11		NO. 11	



SCALE: HORIZONTAL 1" = 40'	VERTICAL 1" = 2'	DATE 11-13-78	LEVEL 11-13-78	BOOK 11-13-78	NO. 11-13-78	FIG. 11-13-78	NO. 11-13-78
----------------------------	------------------	---------------	----------------	---------------	--------------	---------------	--------------

**CONSTRUCTION LEGEND**

- CONSTRUCT 4" STD. SIDEWALK
- CONSTRUCT 6" STD. SIDEWALK
- CONSTRUCT 8" DRIVEWAY
- CONSTRUCT SIDEWALK RAMP TYPE III
- CONSTRUCT CATCH BASIN
- CONSTRUCT SEWER PIPE
- CONSTRUCT STD. SEWER MANHOLE
- SINGLE BEAM BARRIERS BARRICADE - 25' LENGTH
- ADJUST EXISTING MANHOLE
- CONSTRUCT SIDEWALK RAMP TYPE II

**MARKS**

B.M. #40-253 N.E. COR. ALEXANDRINE & ST. AUBIN 148.199

B.M. #40-253 N.E. COR. I-75 & LELAND 149.10

C.B.M. # HD. N.E. LELAND 102' W. OF W. RIVARD 150.092

C.B.M. # HD. N.E. COR. LINGSTONE & RIVARD 149.08

C.B.M. # HD. S.W. COR. MACK & RIVARD 147.54

N. D. SERVICE DR. 147.54

**HORIZONTAL CONTROL**

MACK

BRADY

RIVARD

LELAND

FD. MAIL

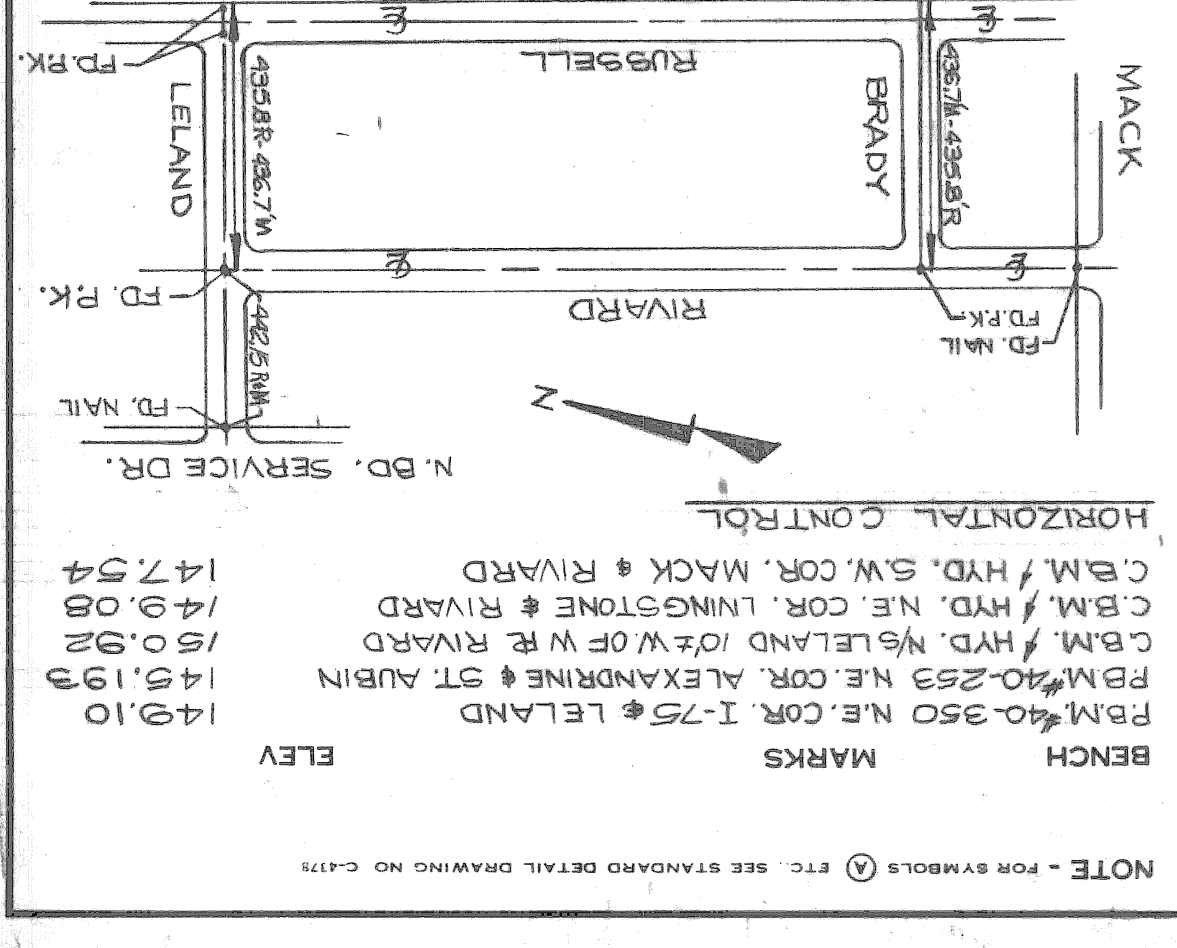
FD. PK.

FD. PK.

FD. PK.

EAST CURB LINE

- CONSTRUCTION NOTES:**
- CONSTRUCT SIDEWALK AT LOCATIONS SHOWN OR AS DIRECTED BY THE ENGINEER
  - ALL DRIVEWAY RADIUS TO BE 10' UNLESS OTHERWISE NOTED
  - PAVEMENT TO BE 8" UNIFORM CONCRETE WITH INTEGRAL CURB UNLESS OTHERWISE NOTED
  - ALL SIDEWALK RAMPS WILL BE TYPE III UNLESS OTHERWISE NOTED
  - FOR TYPICAL SECTIONS SEE SHEET # 2
  - FOR QUANTITIES SEE SHEET # 2



NOTE - FOR SYMBOLS (A) ETC. SEE STANDARD DETAIL DRAWING NO. C-117

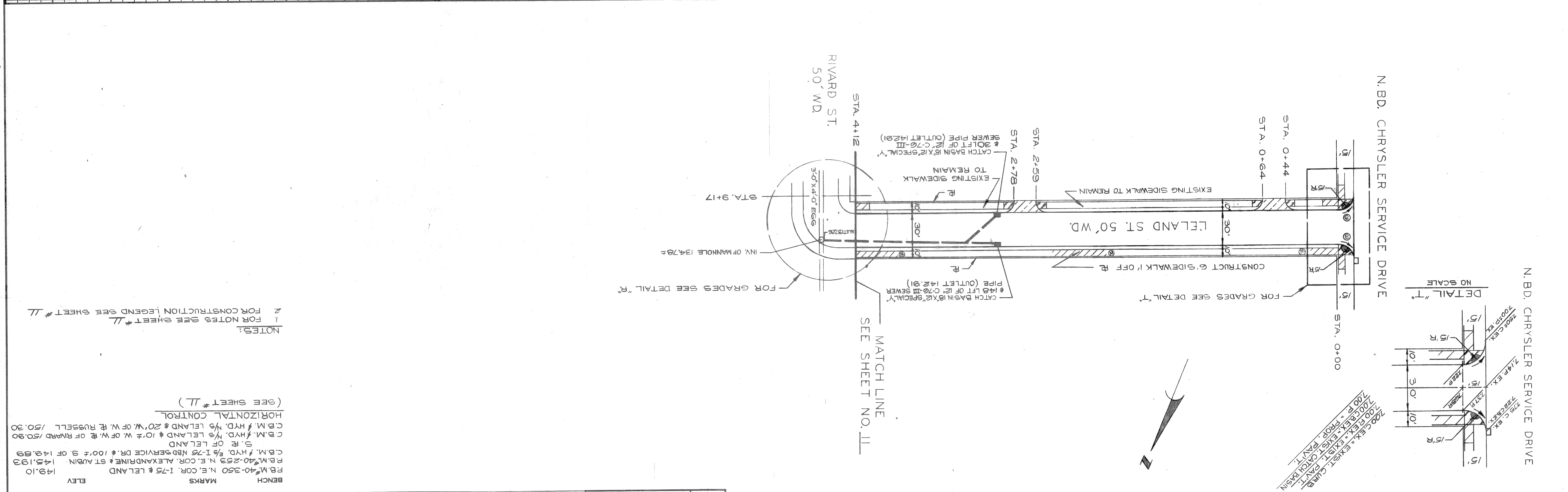
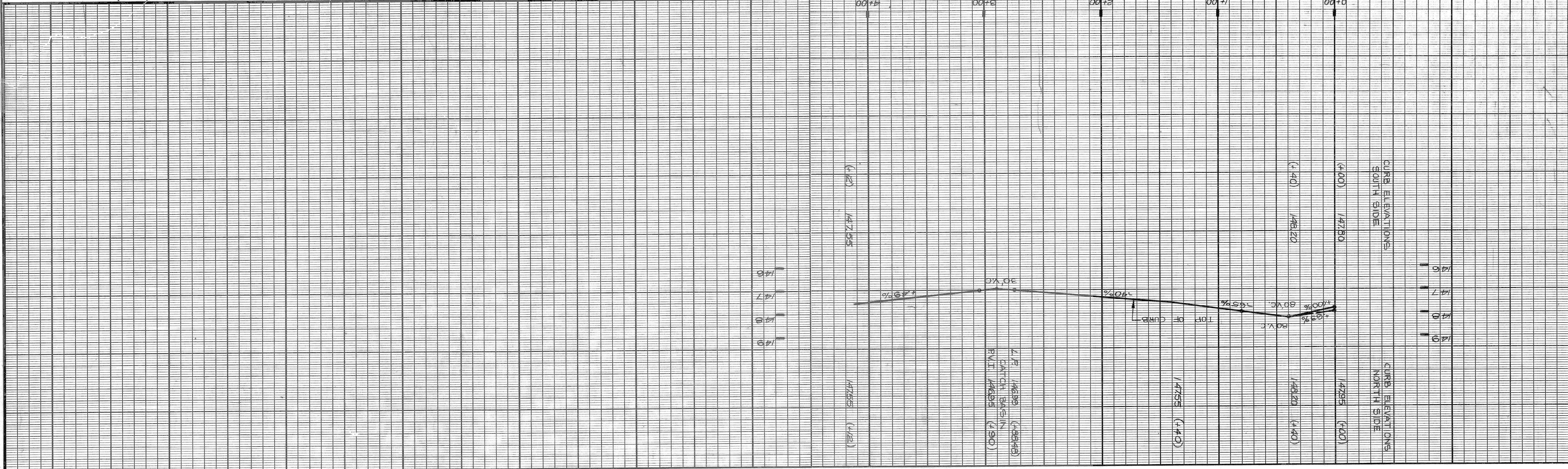
REPAIR EXISTING CONSTRUCTION - CONTRACTOR

STRUCTURES WHETHER OR NOT INDICATED OR MARK.



Sewer Design  
A. D. Dwyer  
10/21/80

REVISIONS	DESCRIPTION	DATE	BY	CHECKED BY	APPROVED BY
PLAN	PLAN		BY	CHECKED BY	APPROVED BY
GRADE	GRADE				
ESTIMATE	ESTIMATE				
FINAL	FINAL				



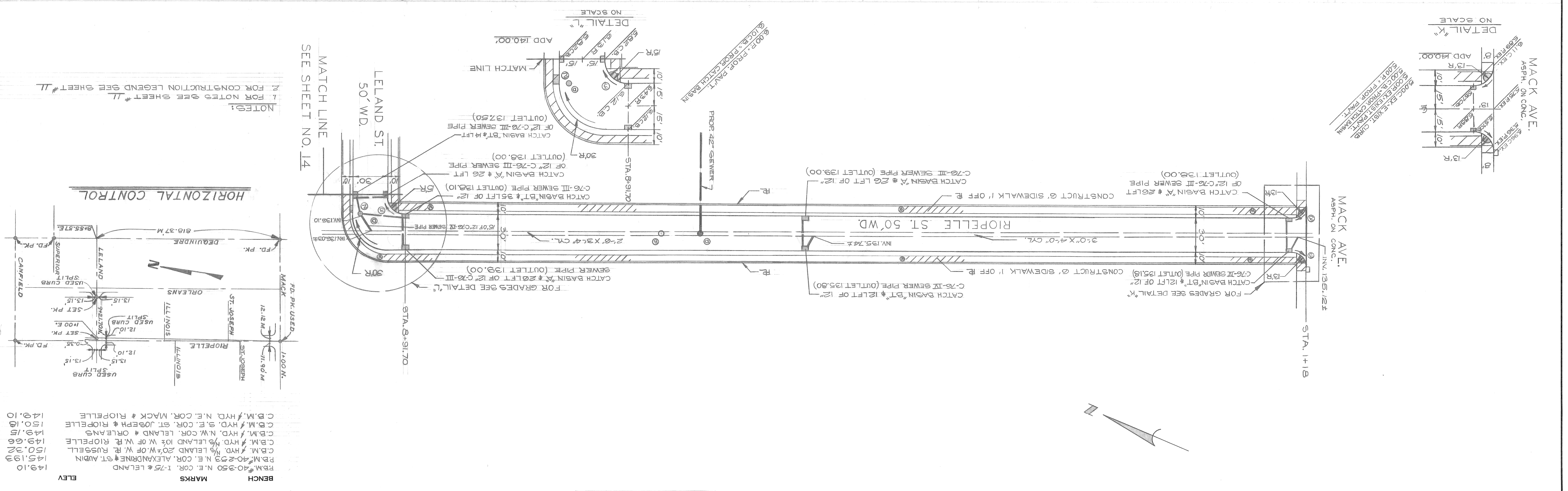
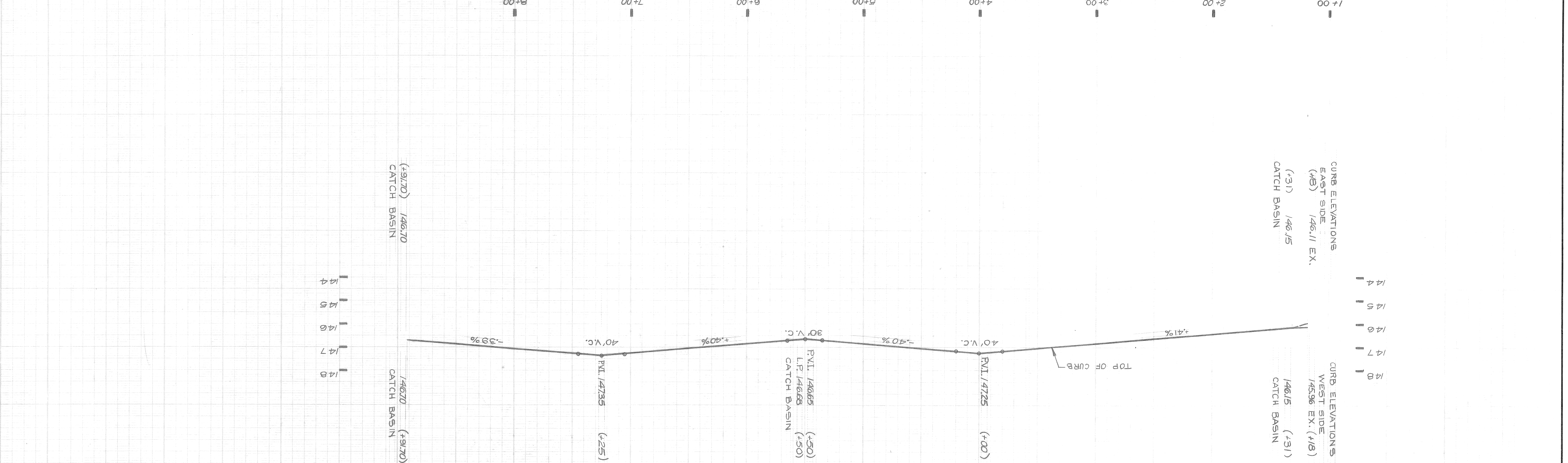
NOTE - FOR SYMBOLS & ETC. SEE STANDARD DETAIL DRAWING NO. C-1173	CONTRACTOR	DATE	LEVEL	BOOK	PG.
		11-13-79	1-B	11-39C(5)	1-8
BEFORE STARTING CONSTRUCTION					
STRUCTURES WHETHER OR NOT INDICATED ON PLAN					
SCALE	HORIZONTAL	VERTICAL			
	1" = 40'	1" = 2'			
PAVING COMPLETED					

BENCH MARKS  
 149.10 R.B.M. #40-360 N.E. COR. 1-75 & LELAND  
 145.193 R.B.M. #40-253 N.E. COR. ALEXANDRINE & ST. AUDIN  
 C.B.M. #HYD. 5/8-1-75 NBD SERVICE DR. # 100' ± S. OF 149.89  
 S. R. OF LELAND  
 C.B.M. #HYD. 10' ± W. OF W. R. OF RIVARD / 50.90  
 C.B.M. #HYD. 1/8 LELAND & 20' W. OF W. R. RUSSELL / 50.30  
 HORIZONTAL CONTROL  
 (SEE SHEET # 11)  
 NOTES:  
 1 FOR NOTES SEE SHEET # 11  
 2 FOR CONSTRUCTION LEGEND SEE SHEET # 11



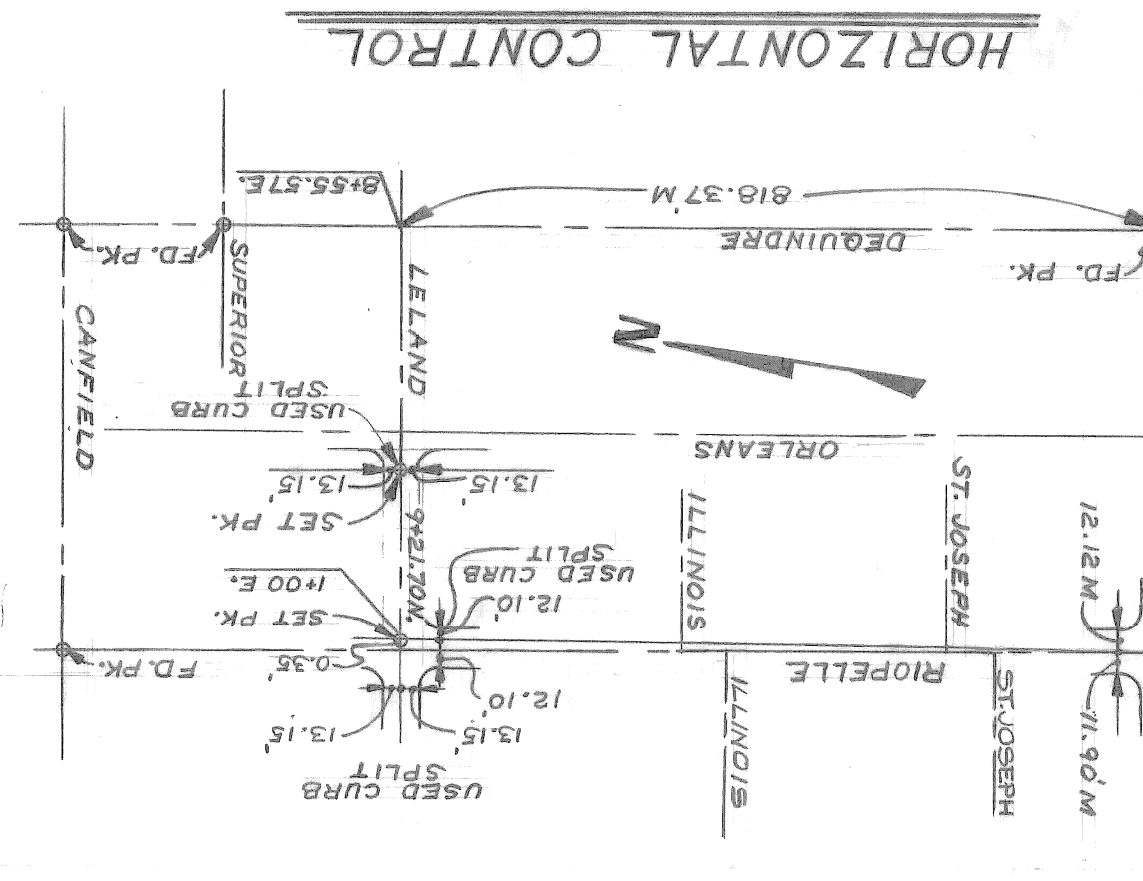
Sewer Design  
*A. DeWitt*  
 10/11/80

DATE 10-16-80		INDEXED		NO. 39		ASSIGNMENT 79-14-15		CONTRACT NO. PW 6614		SHEET 13 OF 34 SHEETS	
PAVING PLAN		LELAND - ORLEANS REHABILITATION PROJECT		RIVARD AND RIOPELLE PAVING AND MISCELLANEOUS CONSTRUCTION		CITY OF DETROIT		CITY ENGINEERING DIVISION D.P.W.		BUREAUS OF STREETS AND HIGHWAYS	
COMMUNITY AND ECONOMIC DEVELOPMENT DEPARTMENT		FOR		ENGINEER OF STREETS		APPROVED:		CHECKED BY:		BY:	
REVISIONS		DESCRIPTION		PLAN		GRADE		ESTIMATE		FINAL	



BOOK 1-39 (7)	PG. 1-9	DATE 10-16-79	LEVEL
SCALE	HORIZONTAL 1" = 40'	VERTICAL 1" = 2'	
NOTE - FOR SYMBOLS ETC. SEE STANDARD DETAIL DRAWING NO. C-173			
BEFORE STARTING CONSTRUCTION CONTRACTOR MUST CHECK WITH UTILITIES FOR LOCATIONS OF EXISTING STRUCTURES WHETHER OR NOT INDICATED ON PLANS.			

BENCH MARKS	ELEV
R.B.M. 40-2-50 N.E. COR. ALEXANDRINE & ST. AUDIN	145.193
C.B.M. HYD. 1/8 LELAND 20' W. OF W. R. RUSSELL	150.32
C.B.M. HYD. 1/8 LELAND 10' W. OF W. R. RUSSELL	149.66
C.B.M. HYD. N.W. COR. LELAND & ORLEANS	149.15
C.B.M. HYD. S.E. COR. ST. JOSEPH & RIOPELLE	150.16
C.B.M. HYD. N.E. COR. MACK & RIOPELLE	149.10



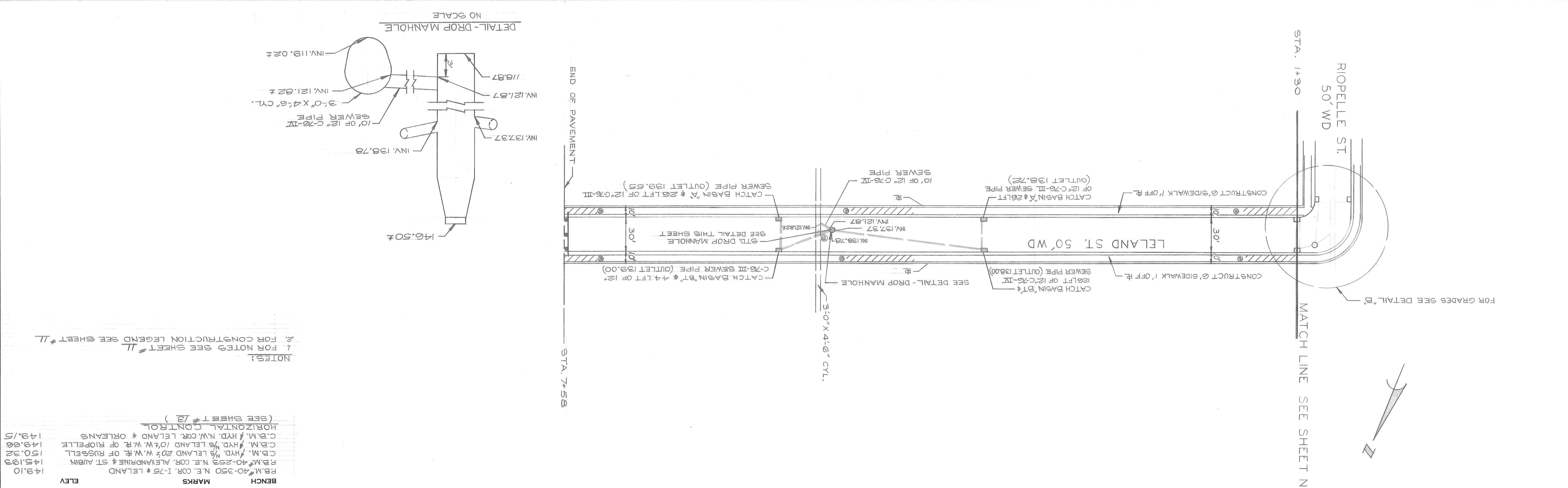
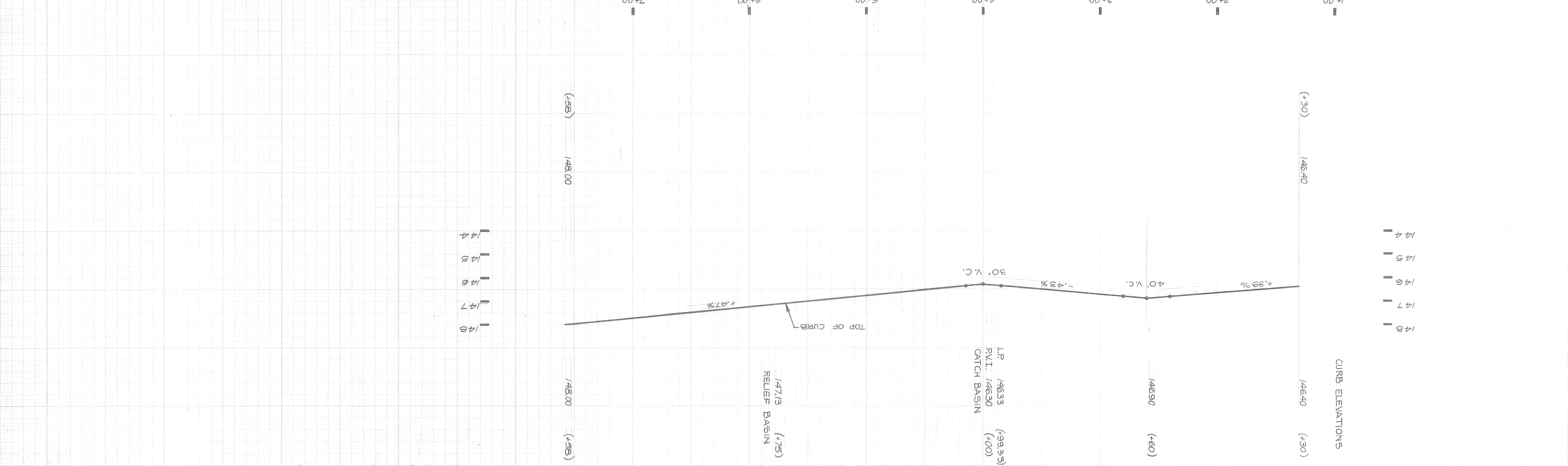
NOTES:  
 1. FOR NOTES SEE SHEET # 11  
 2. FOR CONSTRUCTION LEGEND SEE SHEET # 11

MATCH LINE  
 SEE SHEET NO. 14



Sewer Design  
C. B. ...  
10/21/80

DATE 10-16-80		INDEXED NO. 39		CONTRACT NO. PW 6614		SHEET 14 OF 34 SHEETS	
PAVING PLAN				COMMUNITY AND ECONOMIC DEVELOPMENT DEPARTMENT			
LELAND - ORLEANS REHABILITATION PROJECT				CITY OF DETROIT			
AND MISCELLANEOUS CONSTRUCTION				BUREAUS OF STREETS AND HIGHWAYS			
RIVARD AND RIOPELLE PAVING				CITY ENGINEERING DIVISION D.P.W.			
FOR				ENGINEER OF STREETS			
APPROVED BY:				CHECKED BY:			
BY:				BY:			
REVIEW:				REVIEW:			
FINAL:				FINAL:			
DESCRIPTION				REVISIONS			
DR. N. CK. D. AP. VO. DATE							



BOOK NO. 1-98(7)	LEVEL 1-9	DATE 10-16-79	SCALE: HORIZONTAL 1"=40', VERTICAL 1"=8'
CONTRACTOR	DATE 10-16-79	PG. 1-9	SCALE: HORIZONTAL 1"=40', VERTICAL 1"=8'
CONTRACTOR	DATE 10-16-79	PG. 1-9	SCALE: HORIZONTAL 1"=40', VERTICAL 1"=8'
CONTRACTOR	DATE 10-16-79	PG. 1-9	SCALE: HORIZONTAL 1"=40', VERTICAL 1"=8'

- NOTES:
- FOR NOTES SEE SHEET # 11
  - FOR CONSTRUCTION LEGEND SEE SHEET # 11
- BENCH MARKS
- R.B.M. #40-250 N.E. COR. I-75 & LELAND 149.10
  - R.B.M. #40-253 N.E. COR. ALEXANDRINE & ST. AUBIN 145.193
  - C.B.M. #HYD. 1/8 LELAND 20 1/2 W. W.R. OF RIOPELLE 150.32
  - C.B.M. #HYD. 1/8 LELAND 10 1/2 W. W.R. OF RIOPELLE 149.66
  - C.B.M. #HYD. N.W. COR. LELAND & ORLEANS 149.15
- HORIZONTAL CONTROL (SEE SHEET # 12)