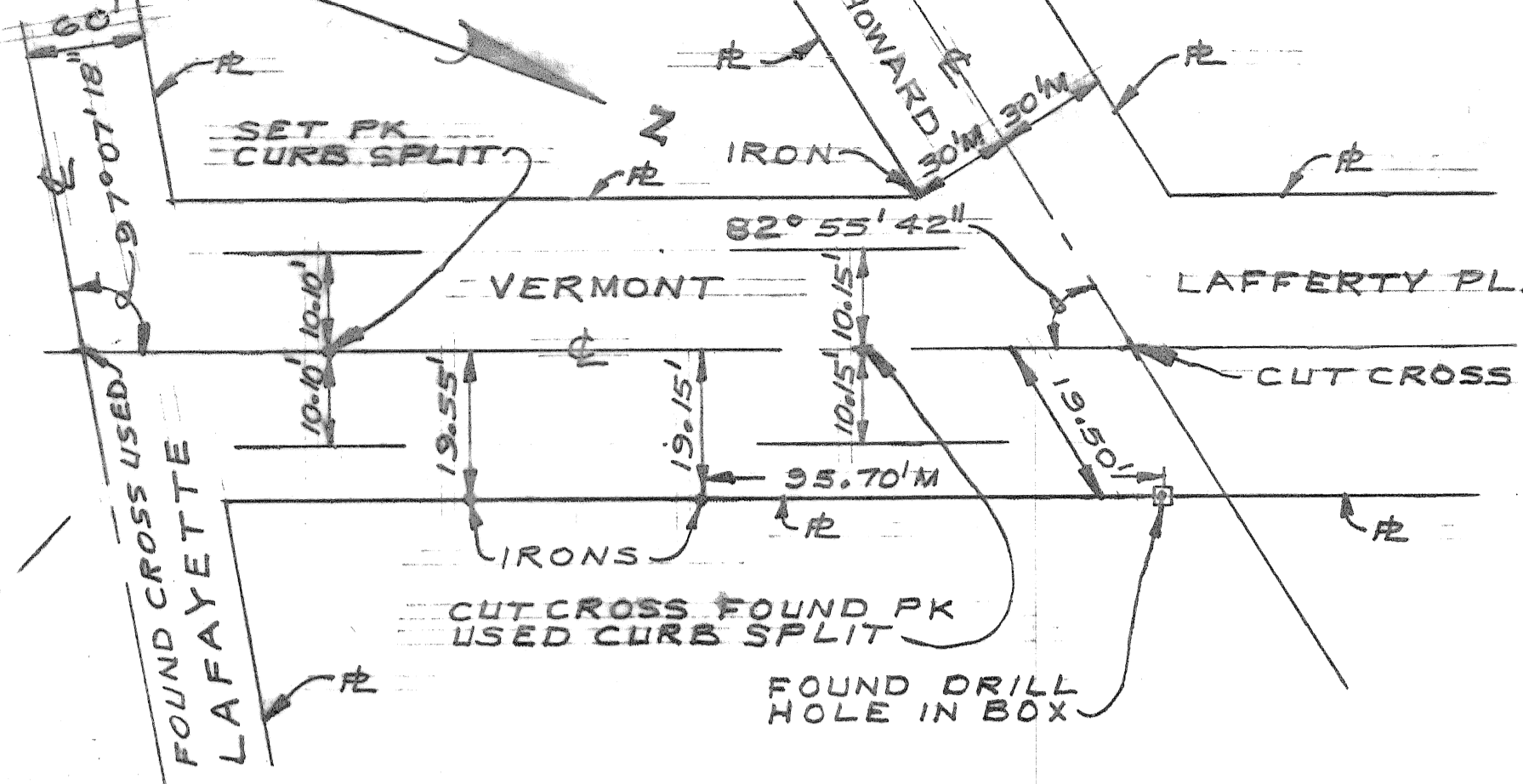
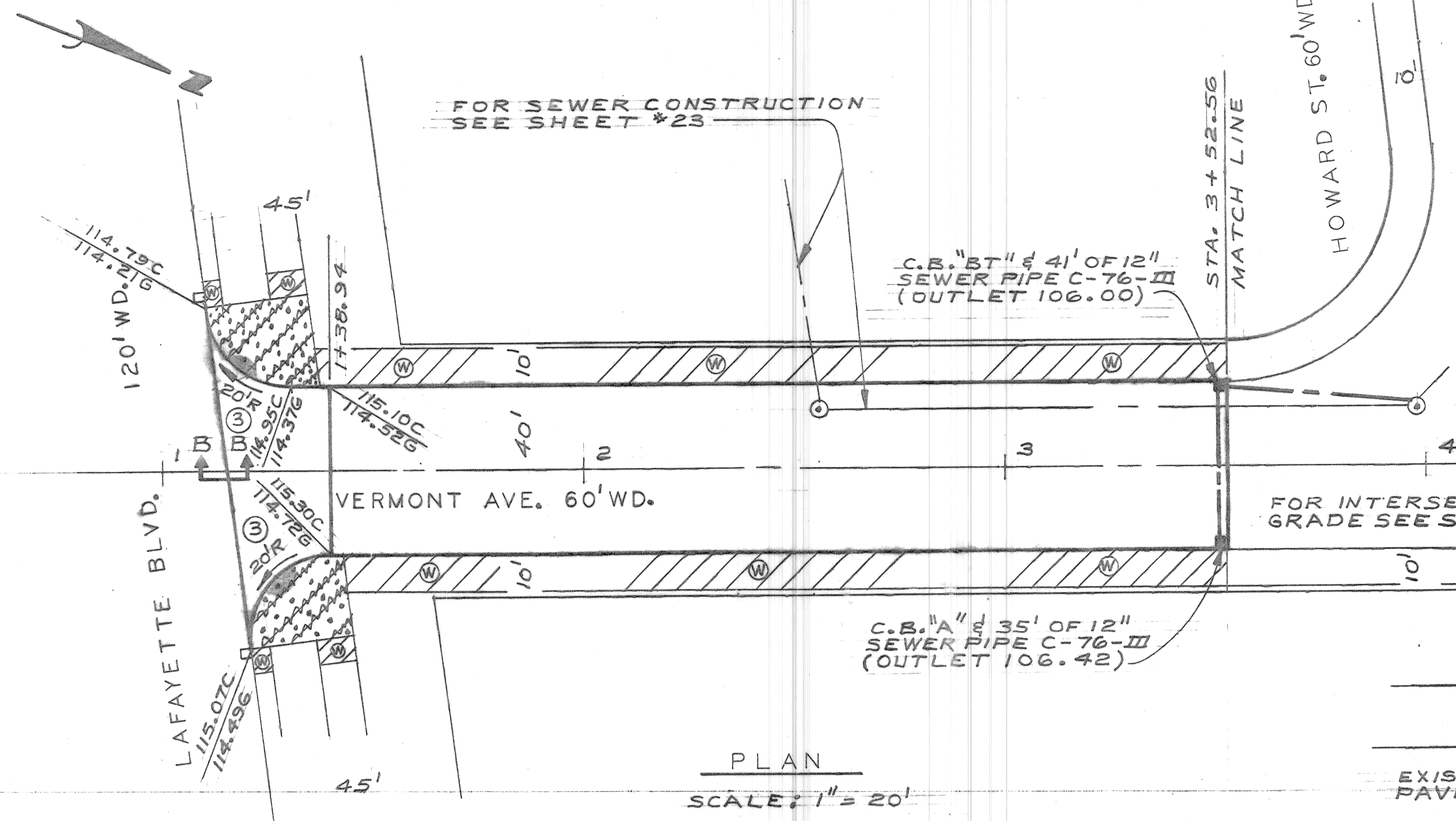


NOTE - FOR SYMBOLS @ ETC., SEE STANDARD DETAIL DRAWING NO. C-478

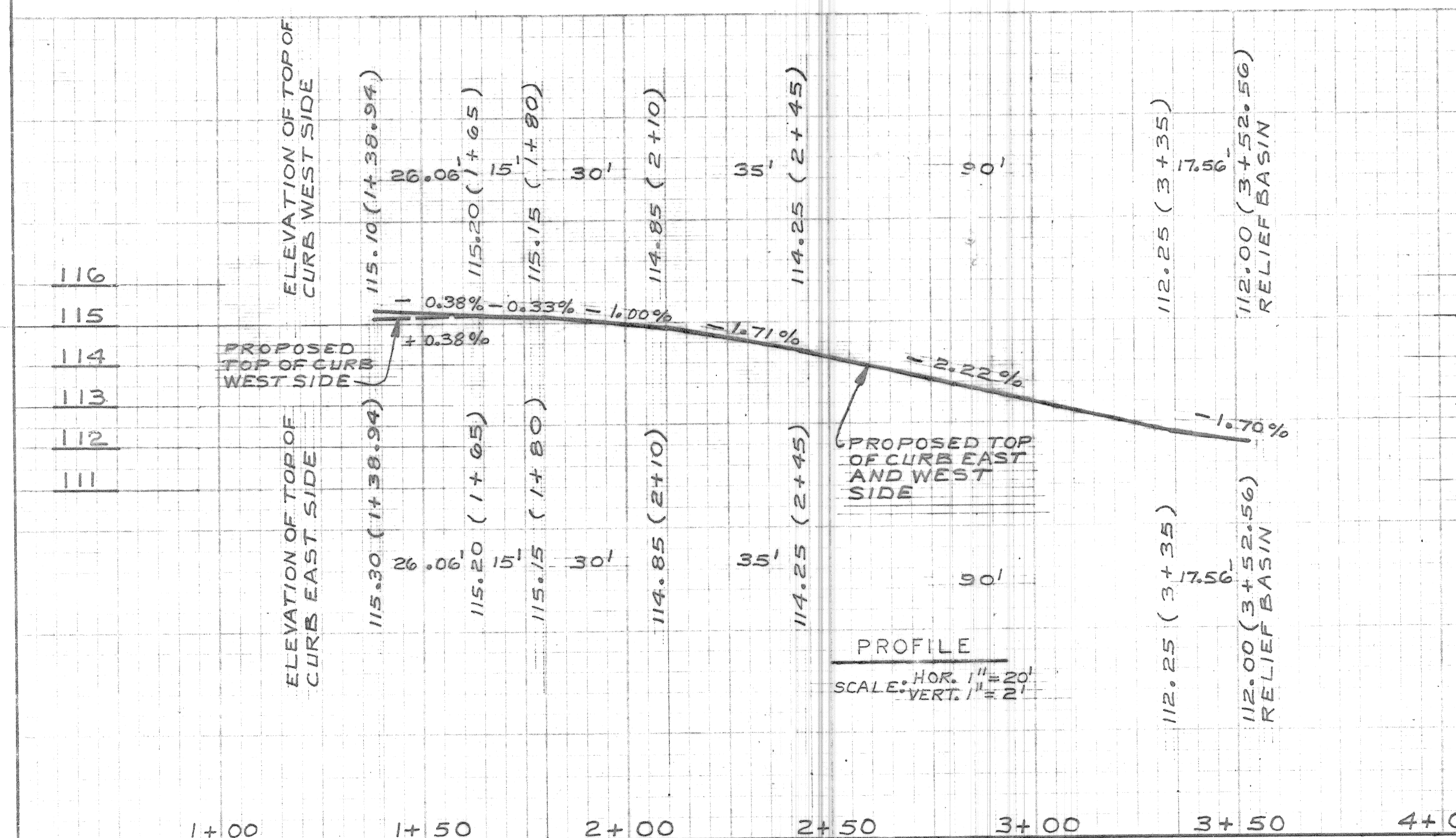
BENCH MARKS	ELEV
P.B.M. #19-254 S.E. COR. 18 TH & NEWARK	EL. 103.347R
P.B.M. #19-254A S.W. COR. NEWARK & 16 TH	EL. 111.882R
C.B.M. HYD. N.E. COR. VERMONT & HOWARD	EL. 113.91
C.B.M. HYD. N.E. COR. LAFAYETTE & VERMONT	EL. 118.90
P.B.M. #18-355A HOWARD & 10 TH	EL. 111.65R



- NOTES:
- FOR CONSTRUCTION LEGEND AND CONSTRUCTION NOTES SEE SHEET 5
 - FOR SEWER CONSTRUCTION SEE SHEET 23

PLAN
SCALE: 1" = 20'

SECTION B-B
NO SCALE



PROFILE
SCALE: HOR. 1" = 20'
VERT. 1" = 2'

Sewer Approved
8/27/79
C. Jones

BY	JONES	CHECKED BY	[Signature]	APPROVED	[Signature]
PLAN		GRADE		ESTIMATE	
DESCRIPTION	REVISIONS	DN	CK	AP	VSJ
DATE	FINAL	CHECK	[Signature]	[Signature]	[Signature]

CITY OF DETROIT
CITY ENGINEERING DIVISION EPMD
BUREAU OF STREETS AND HIGHWAYS
FOR
COMMUNITY AND ECONOMIC DEVELOPMENT DEPARTMENT

PAVING OF FOURTEENTH, HOWARD, VERMONT,
AND MISCELLANEOUS CONSTRUCTION
WEST SIDE INDUSTRIAL PROJECT NO. 2
STREET PAVING PLAN

INDEX NO.	42	SHEET 8 OF 28 SHEETS
CONTRACT NO.	PW 6605	
ASSIGNMENT NO.	73-14-03	
DATE	JUNE 12, 1979	