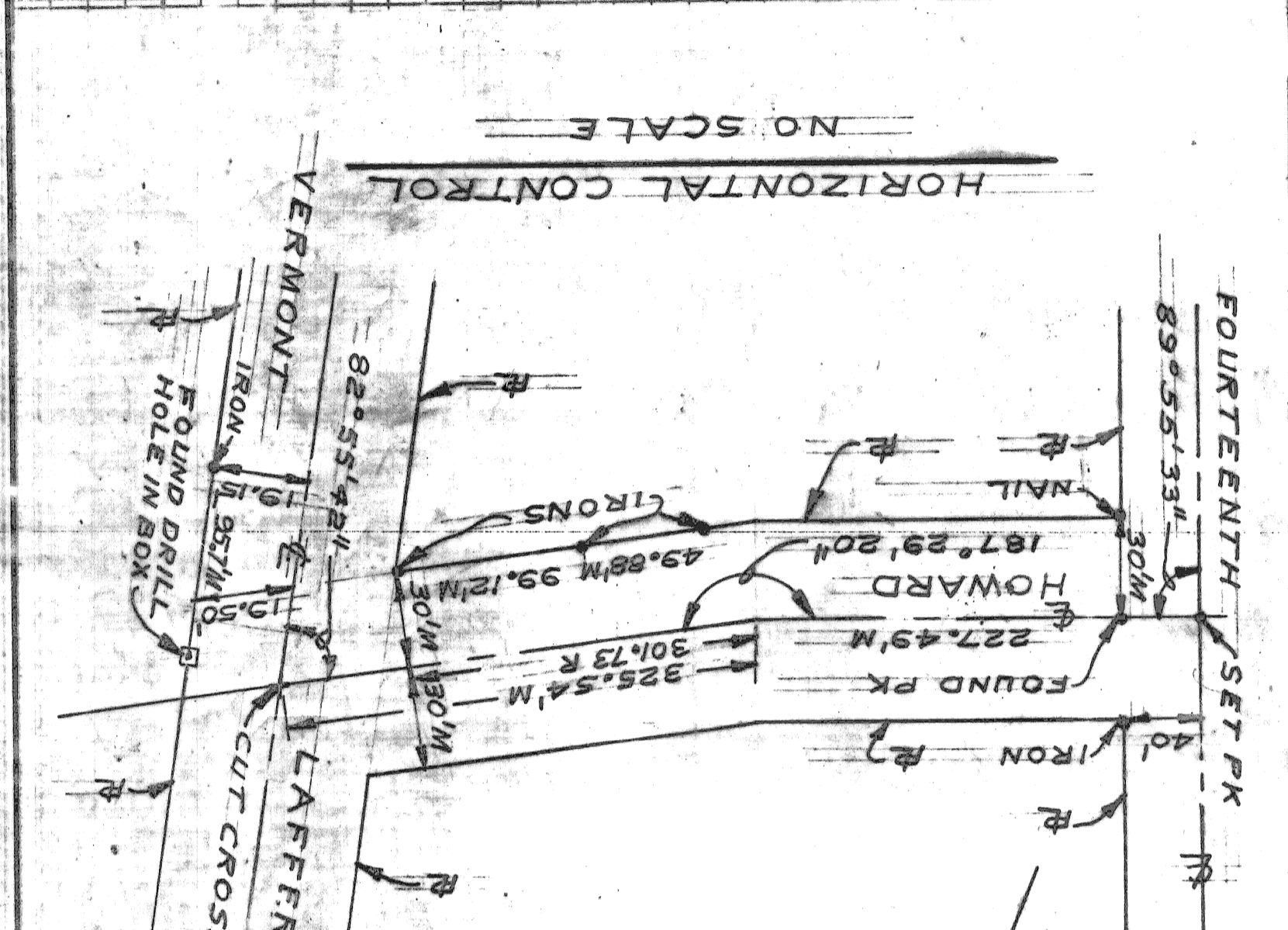
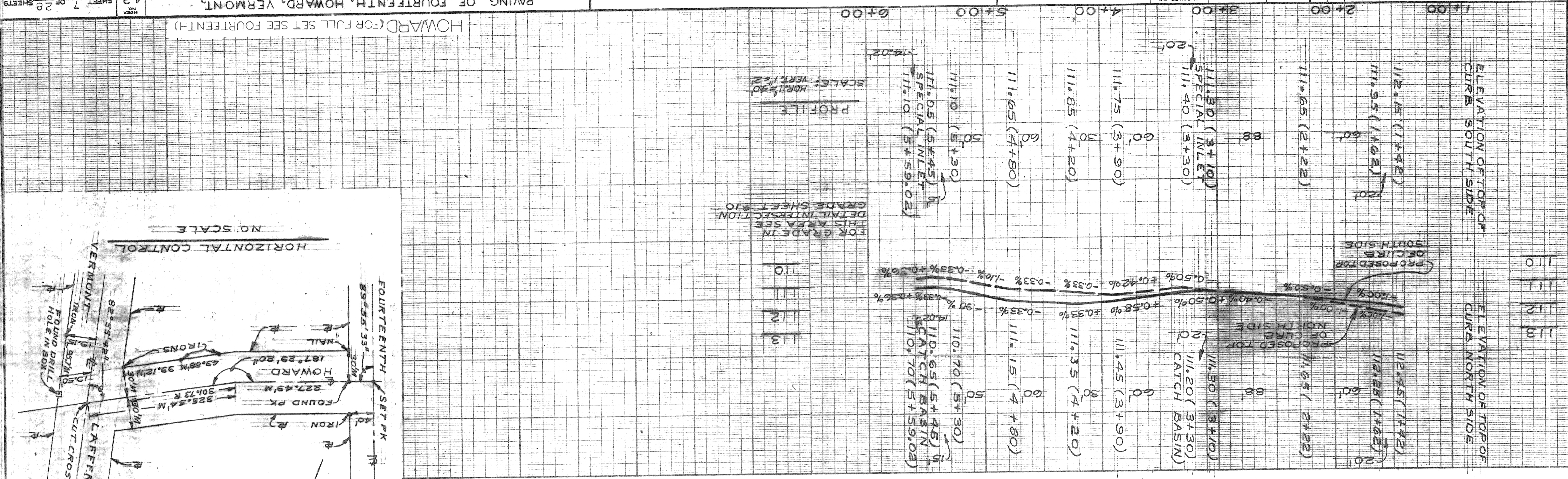


Sever Approved
C. J. Bluff
2/5/79

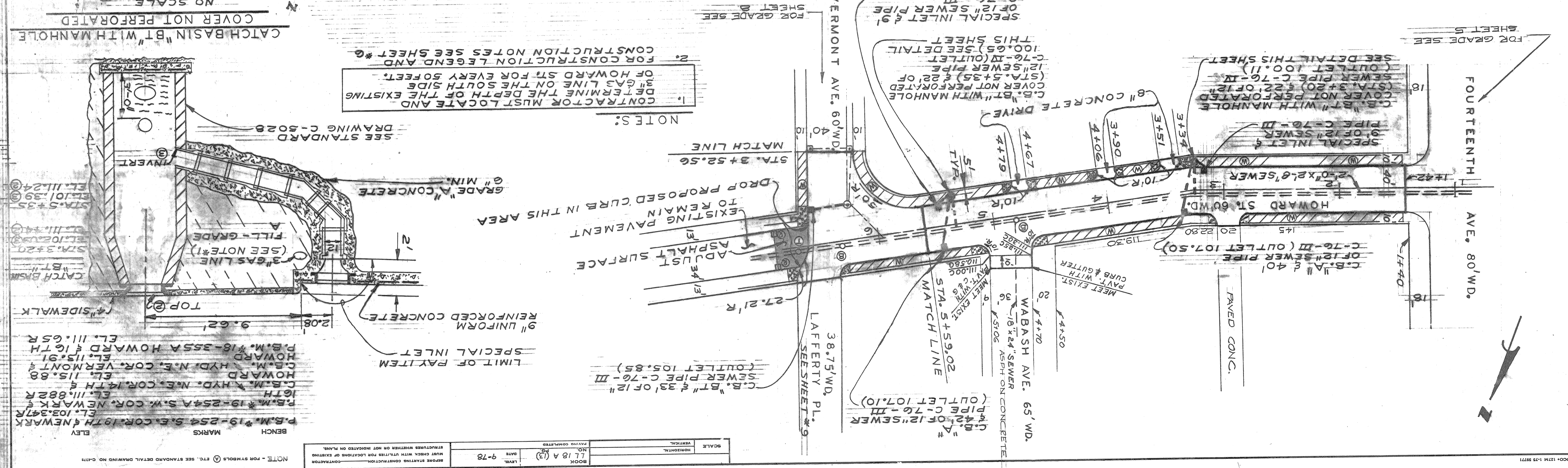
REVISIONS	
DESCRIPTION	DATE
WABASH RETURN AND GRADE ADJUST	APR 22 1978
ALERT RETURN ADDED	APR 11 1978
ESTIMATE	APR 11 1978
PLAN	JONES
GRADE	
BY	JONES
CHECKED BY	W. G. M.
APPROVED BY	W. G. M.

CITY OF DETROIT
CITY ENGINEERING DIVISION, E.P.M.D.
BUREAUS OF STREETS AND HIGHWAYS
FOR
COMMUNITY AND ECONOMIC DEVELOPMENT DEPARTMENT

STREET PAVING PLAN
PAVING OF FOURTEENTH, HOWARD, VERMONT,
AND MISCELLANEOUS CONSTRUCTION
WEST SIDE INDUSTRIAL PROJECT NO. 2
CONTRACT NO. PW 6605
SHEET 7 OF 28 SHEETS
ASSIGNMENT NO. 78-14-03
DATE JUNE 12, 1979



PLAN SCALE 1" = 40'



NOTES:
1. CONTRACTOR MUST LOCATE AND DETERMINE THE DEPTH OF THE EXISTING 3" GAS LINE ON THE SOUTH SIDE OF HOWARD ST FOR EVERY 50 FEET.
2. FOR CONSTRUCTION NOTES SEE SHEET #6.
3. SEE STANDARD DRAWING C-502B.
COVER NOT PERFORATED
CATCH BASIN "BT" WITH MANHOLE
COVER NOT PERFORATED

MARKS	ELEV
P.B.M. #19-254 S.E. COR. 19TH & NEWARK	EL. 103.347R
P.B.M. #19-254 S.W. COR. NEWARK & 16TH	EL. 111.882R
C.B.M. & HYD. N.E. COR. 14TH & HOWARD	EL. 115.88
C.B.M. & HYD. N.E. COR. VERMONT & HOWARD	EL. 115.91
P.B.M. #16-355A HOWARD & 16TH	EL. 111.65R
9" UNIFORM CONCRETE	
SPECIAL INLET	
3" GAS LINE (SEE NOTE #1)	
4" SIDEWALK	
CATCH BASIN "BT"	
STA. 3+20	EL. 110.240
STA. 5+35	EL. 111.240

BOOK	LL 18 A (3)
LEVEL	9-78
DATE	
SCALE	HORIZONTAL
SCALE	VERTICAL
NOTE - FOR SYMBOLS, ETC. SEE STANDARD DETAIL DRAWING NO. C-473	
BEFORE STARTING CONSTRUCTION - CONTRACTOR MUST CHECK WITH UTILITIES FOR LOCATION OF EXISTING STRUCTURES WHETHER OR NOT INDICATED ON PLAN.	