

CITY OF DETROIT

CITY ENGINEERING DIVISION (E.P.M.D.)

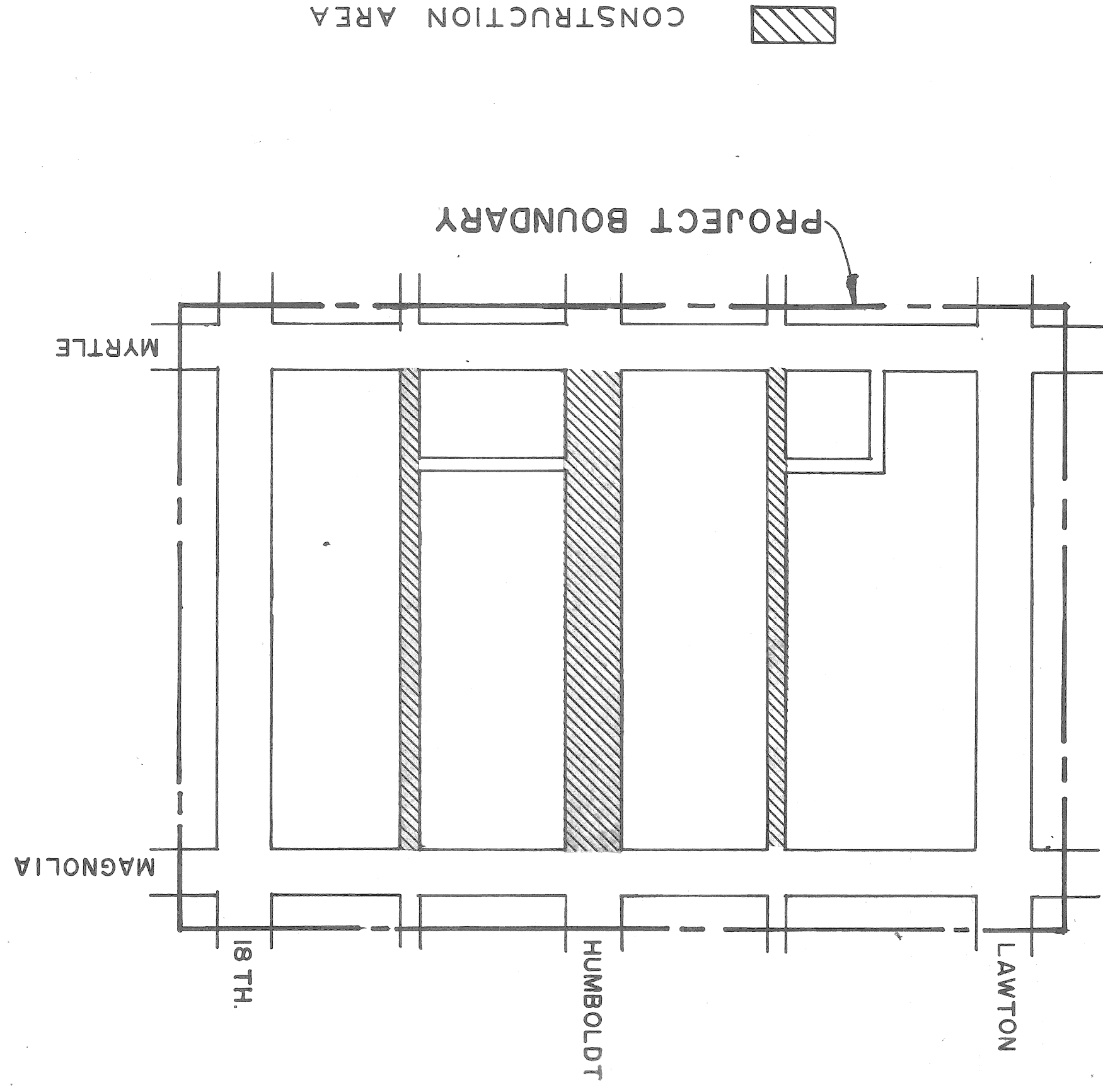
PLANS FOR PROPOSED

PAVEMENT REMOVAL AND MISCELLANEOUS CONSTRUCTION

MYRTLE-HUMBOLDT REHABILITATION PROJECT R-224(3)

FOR

COMMUNITY AND ECONOMIC DEVELOPMENT DEPARTMENT



- INDEX OF SHEETS
- 1. TITLE SHEET
 - 2. REMOVAL, UTILITIES AND QUANTITIES

PROJECT: PAVEMENT REMOVAL
AND MISCELLANEOUS CONSTRUCTION
MYRTLE-HUMBOLDT REHABILITATION
PROJECT R-224(3)
CONTRACT NO. PW 6577

PLANS PREPARED BY

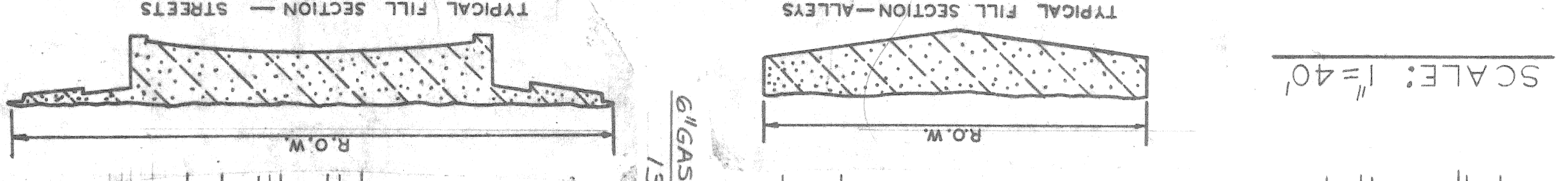
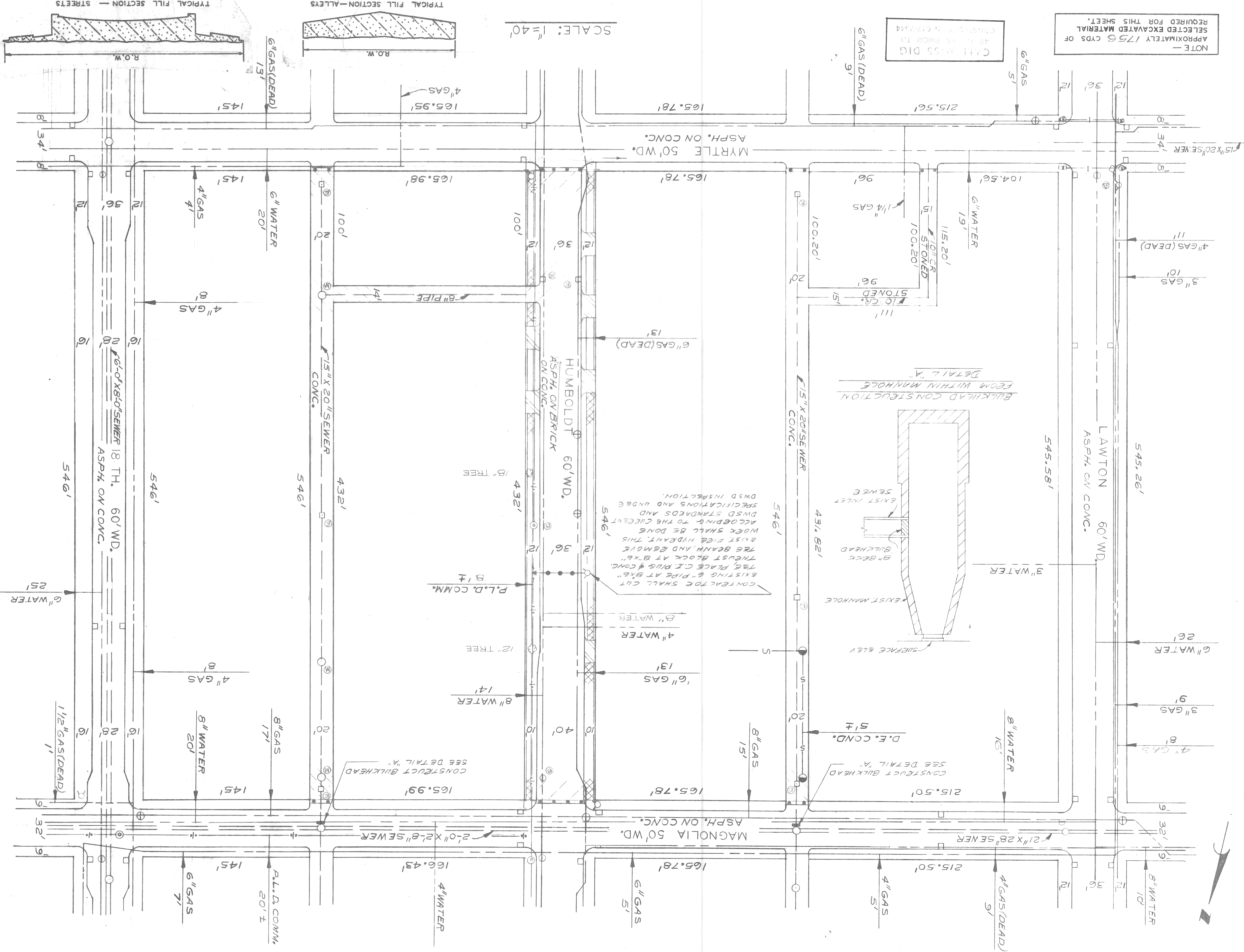
CITY ENGINEERING DIVISION (E.P.M.D.)

DATE	6-1-76	ENGINEER OF INSPECTION	R.S. [Signature]	RECOMMENDED FOR APPROVAL
DATE	6-1-76	ENGINEER OF STREETS	[Signature]	RECOMMENDED FOR APPROVAL
DATE	6-1-76	ASSISTANT CITY ENGINEER	[Signature]	APPROVED
DATE	6-1-76	CITY ENGINEER	[Signature]	APPROVED

Sewer Approved
05/16/64

NOTE - APPROXIMATELY 1756 CYDS OF SELECTED EXCAVATED MATERIAL REQUIRED FOR THIS SHEET.

CALL THIS DIG 48' AS PRIOR TO CONSTRUCTION.



NO.	DESCRIPTION OF ITEM	UNIT	TOTAL
1.	STREET PAVEMENT REMOVAL - UNREINFORCED	SQ. YD.	2428
2.	ALLEY PAVEMENT REMOVAL	SQ. YD.	2428
3.	TREE REMOVAL 4" - 12" DIA.	EACH	1
4.	TREE REMOVAL 13" - 16" DIA.	EACH	1
5.	DRIVEWAY REMOVAL	SFT.	1441
6.	SIDEWALK REMOVAL	SFT.	6079
7.	GRADING ABANDONED ALLEYS	SQ. YD.	3640
8.	GRADING ABANDONED STREETS	SQ. YD.	2428
9.	CATCH BASIN ABANDONMENT	EACH	8
10.	MANHOLE ABANDONMENT	EACH	3
11.	MANHOLE ADJUSTMENT	EACH	1
12.	MANHOLE RE CONSTRUCT CONE	EACH	1
13.	SINGLE BEAM BARRIEL BARRICADE - 40' LENGTH	EACH	1
14.	SINGLE BEAM BARRIEL BARRICADE - 30' LENGTH	EACH	3
15.	SINGLE BEAM BARRIEL BARRICADE - 20' LENGTH	EACH	5
16.	CLEANING STRUCTURES	EACH	1
17.	MAINTAINING TRAFFIC	SQ. YD.	1
18.	FIRE HYDRANT ABANDONMENT	EACH	1
19.	BULKHEADING ABANDONED LAT. SEWER @ MH. EACH	EACH	2

GENERAL NOTES:

- BEFORE STARTING CONSTRUCTION THE CONTRACTOR MUST CHECK WITH THE UTILITY COMPANIES TO VERIFY THE LOCATION OF EXISTING STRUCTURES, WHETHER OR NOT INDICATED ON THE PLANS.
- FOR UTILITY LEGEND, SEE DRAWING C902-A.

