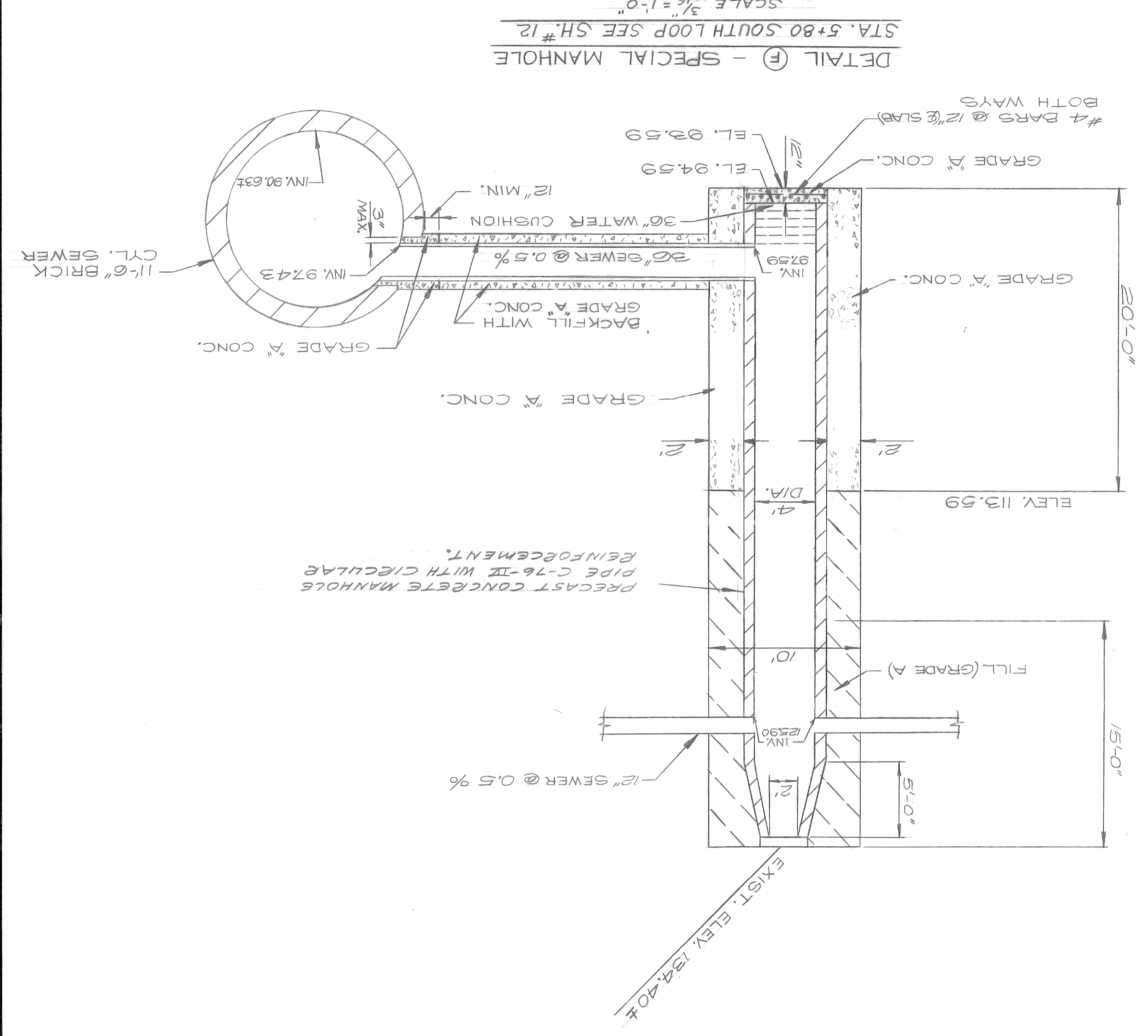
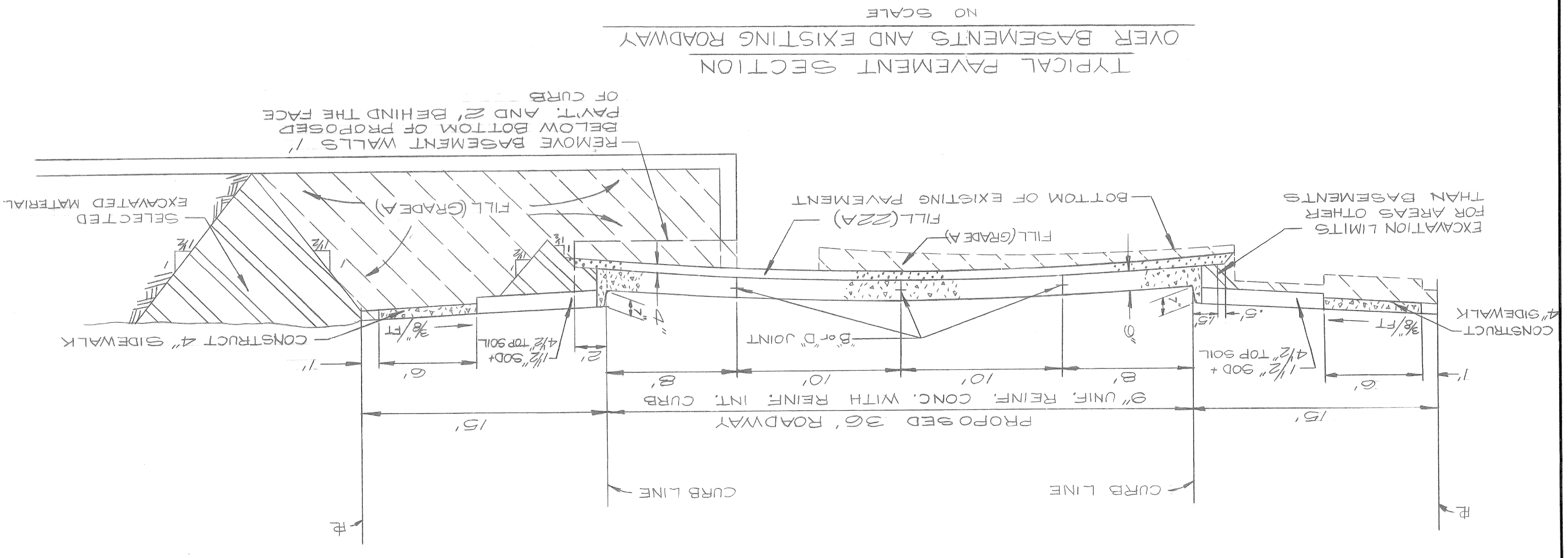
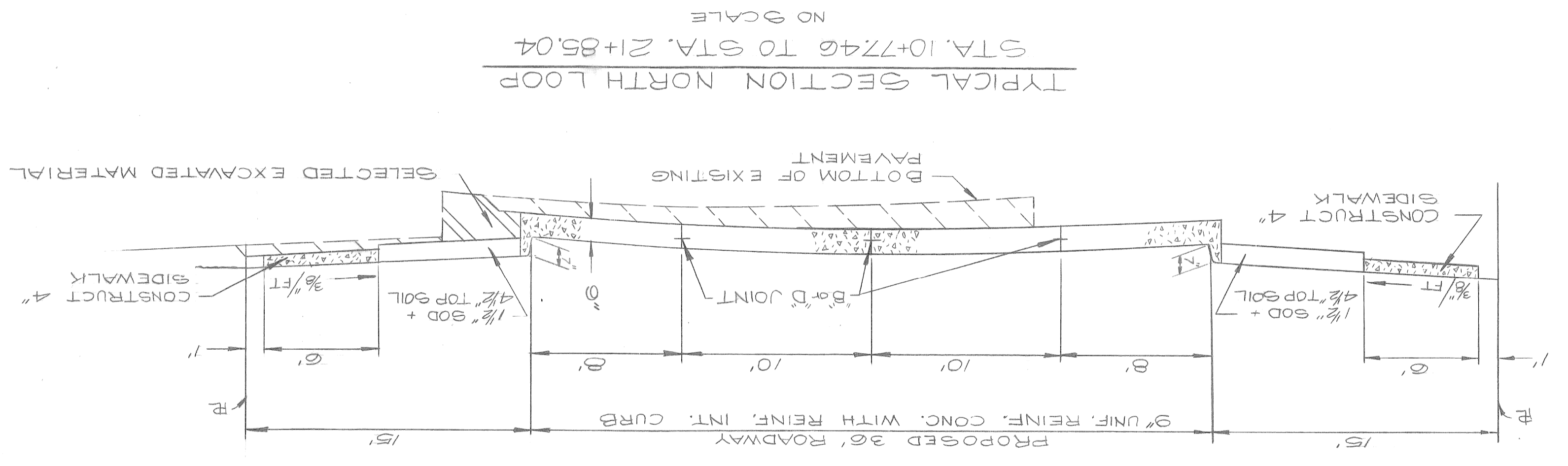
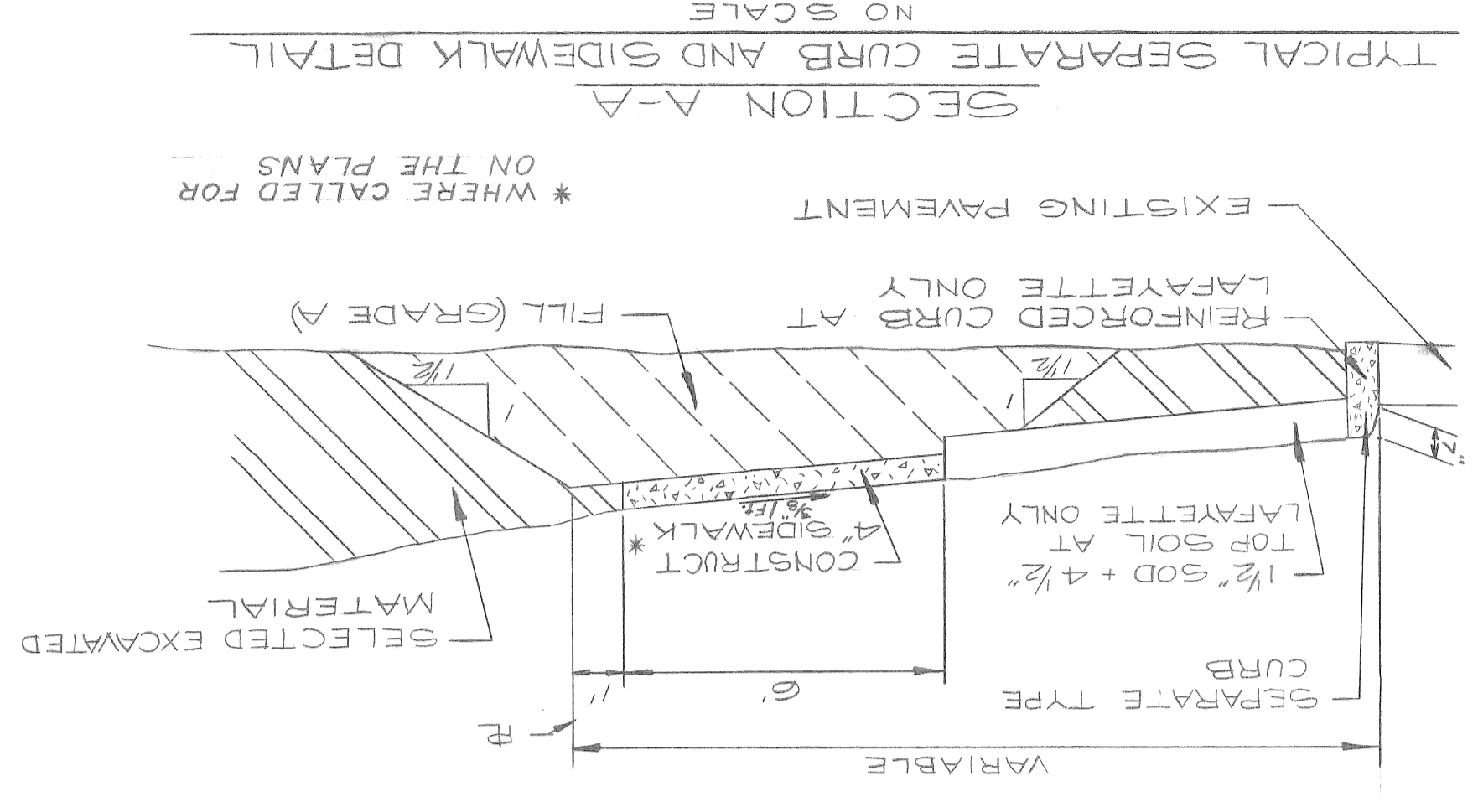


REVISIONS LOCATED BY COORDINATES ON SHEET NO. DESCRIPTION SPECIAL MANHOLE DETAIL (REVISED)		CHECKED BY WLT	
TRACED BY		DRAWN BY D.E.V.	
DESIGNED BY		APPROVED <i>Mamun B. Kamruzzaman</i> ENGINEER OF STREETS	

CITY OF DETROIT
 CITY ENGINEERING DEPARTMENT
 FOR
 COMMUNITY AND ECONOMIC DEVELOPMENT DEPARTMENT

PAVING OF THE MC DOUGALL-MULLETT LOOP
 THE MC DOUGALL-MAPLE LOOP AND
 MISCELLANEOUS CONSTRUCTION
 ELMWOOD PARK REHABILITATION PROJECT
 NO. 3 MICH. R-123
 TYPICAL SECTIONS

DATE	12-15-75
NO.	AO.2295
ASSIGNMENT	PW6575
CONTRACT	
NO.	
SHEET	2 OF 103 SHEETS



EARTHWORK LEGEND

	SELECTED EXCAVATED MATERIAL
	FILL (22A)
	FILL (GRADE A)

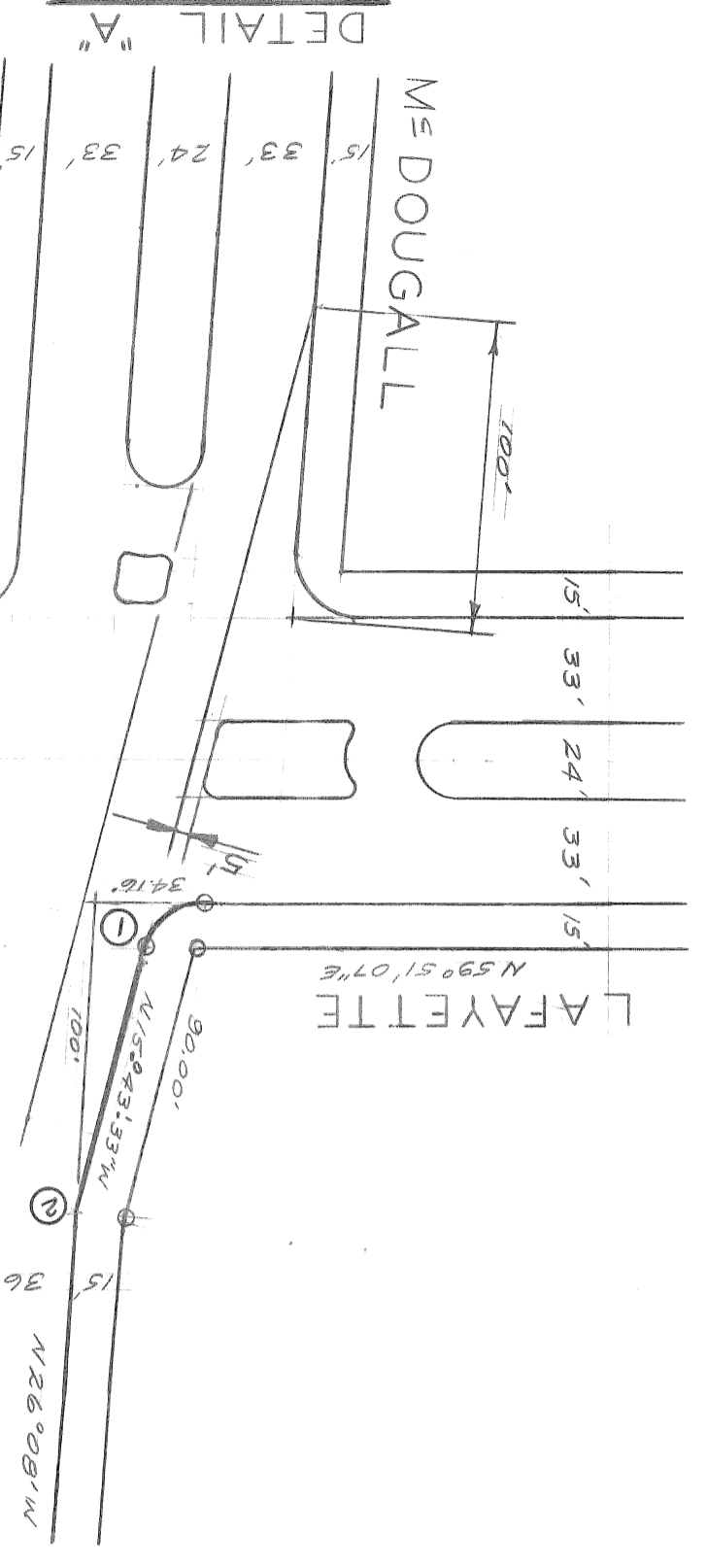
NO.	DESCRIPTION	DATE

DESIGNED BY	
DRAWN BY	Talley
TRACED BY	
CHECKED BY	

APPROVED: *Travis Kawano*
 ENGINEER OF STREETS

CITY OF DETROIT
 CITY ENGINEERING DEPARTMENT
 FOR
 COMMUNITY AND ECONOMIC DEVELOPMENT DEPARTMENT

ALIGNMENT SHEET
 PAVING OF THE MC DOUGALL - MULLETT LOOP
 THE MC DOUGALL - MAPLE LOOP AND
 MISCELLANEOUS CONSTRUCTION
 ELMWOOD PARK REHABILITATION PROJECT
 NO. 3 MICH. R-123
 CONTRACT PW6575
 ASSIGNMENT A.O. 2294
 No. 12-15-75



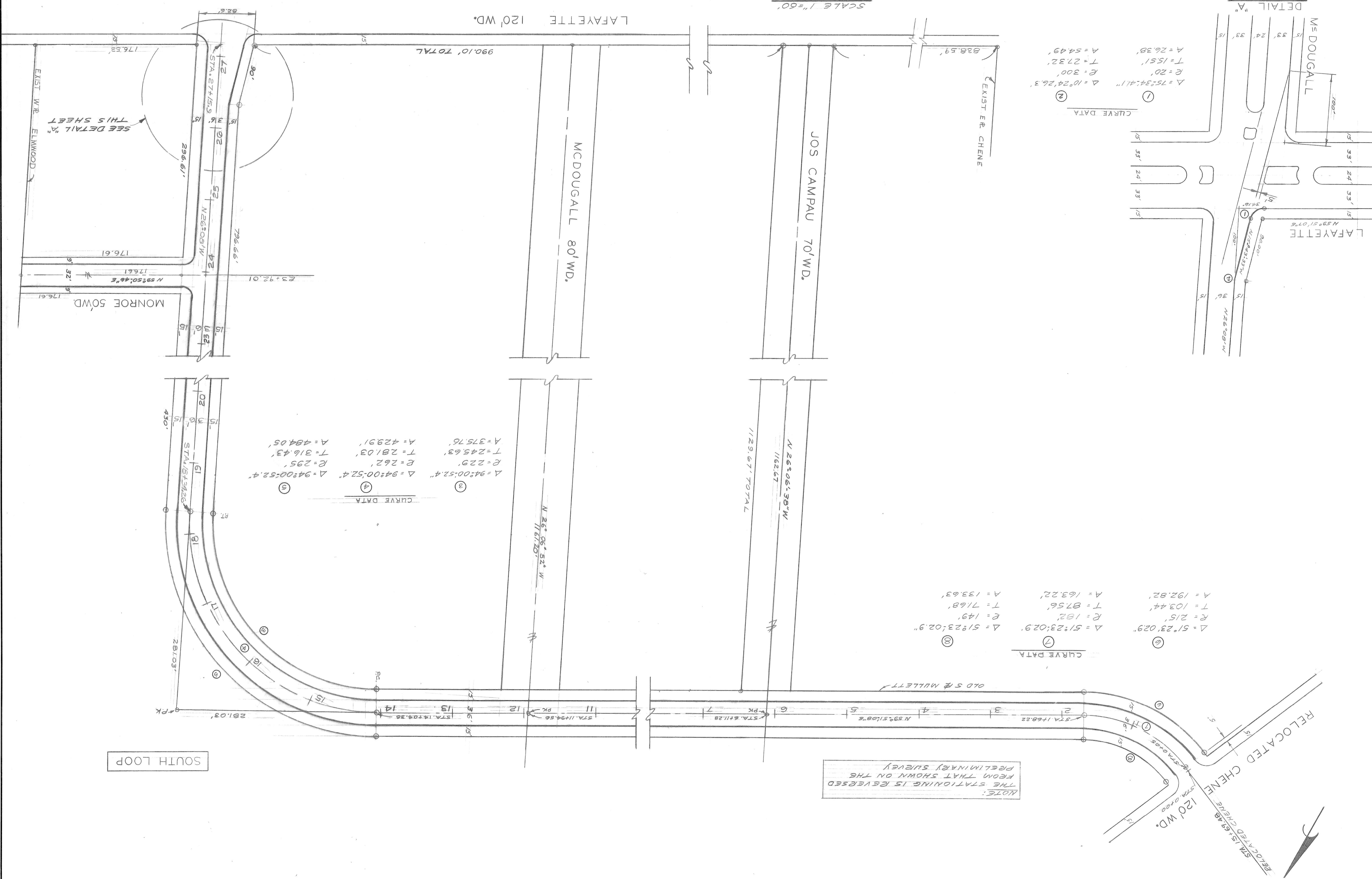
CURVE DATA
 ①
 $\Delta = 75^\circ 34' 41.1''$ $\Delta = 10^\circ 24' 26.3''$
 R = 20' E = 300'
 T = 27.32' A = 54.49'
 A = 26.38'

CURVE DATA
 ⑥
 $\Delta = 51^\circ 23' 02.9''$
 R = 215' E = 182'
 T = 103.44' A = 163.22'
 A = 192.82'

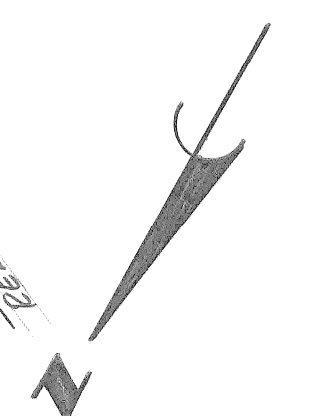
⑦
 $\Delta = 51^\circ 23' 02.9''$
 R = 149' E = 149'
 T = 71.68' A = 133.63'
 A = 133.63'

CURVE DATA
 ④
 $\Delta = 94^\circ 00' 52.4''$
 R = 229' E = 295'
 T = 281.03' A = 429.91'
 A = 375.76'

⑤
 $\Delta = 94^\circ 00' 52.4''$
 R = 229' E = 295'
 T = 316.43' A = 484.05'



NOTE:
 THE STATIONING IS REVERSED
 FROM THAT SHOWN ON THE
 PRELIMINARY SURVEY



DATE 12-15-75
 SHEET 3 OF 10 SHEETS
 CONTRACT PW6575
 ASSIGNMENT A.O. 2294
 No. 12-15-75