

CITY OF DETROIT
CITY ENGINEERING DEPARTMENT

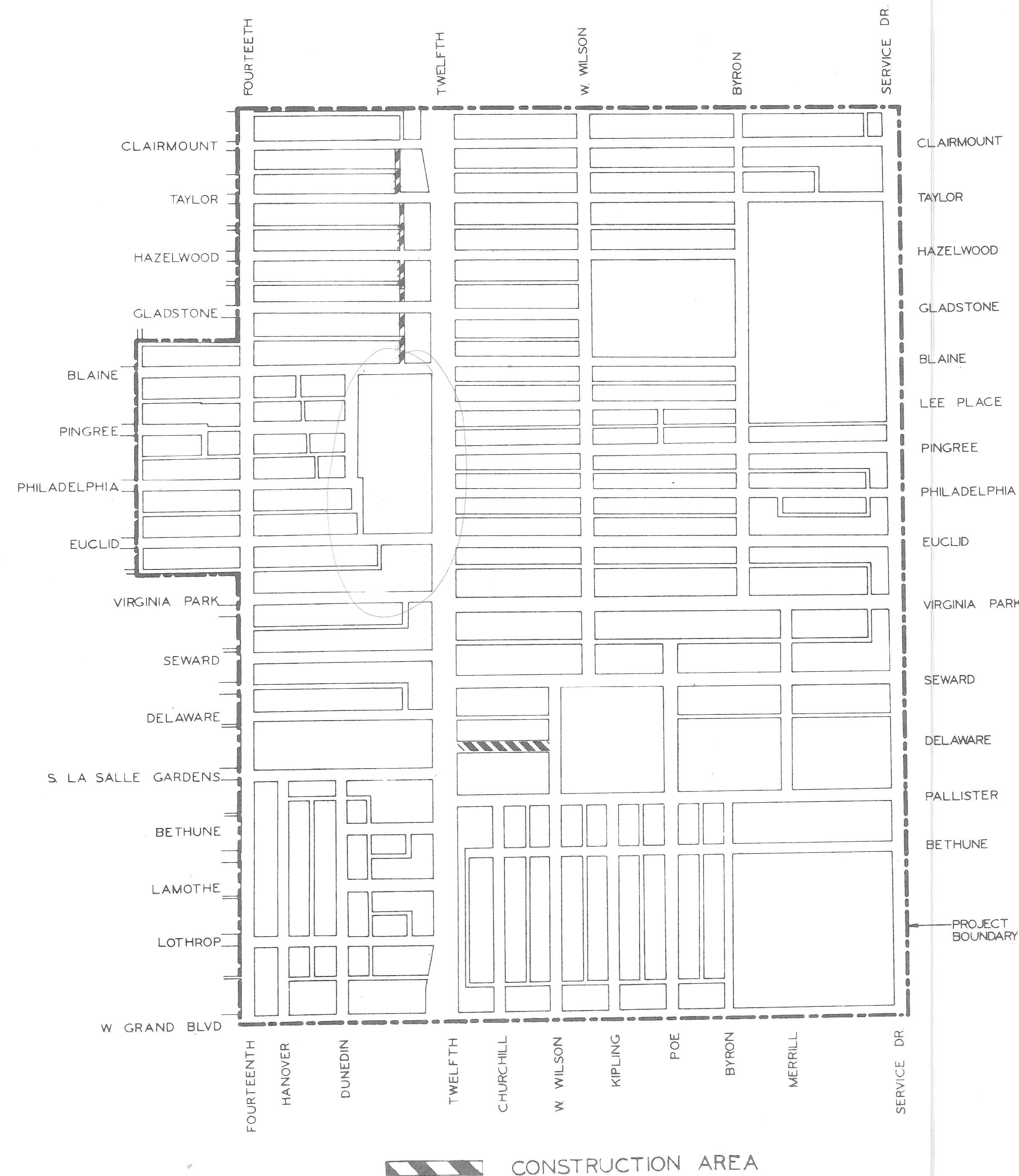
PLANS FOR PROPOSED

ALLEY PAVEMENT RECONSTRUCTION
AND MISCELLANEOUS CONSTRUCTION

VIRGINIA PARK REHABILITATION PROJECT NDP MICH. A-4-2

FOR

COMMUNITY AND ECONOMIC DEVELOPMENT DEPARTMENT



INDEX OF SHEETS

- 1 TITLE SHEET
- 2-3 PAVING PLANS
- 4 REMOVAL PLAN, TYPICAL SECTIONS AND QUANTITIES
- 5 SEWER ALTERATIONS

AO.2328

PROJECT :
ALLEY PAVEMENT RECONSTRUCTION
& MISCELLANEOUS CONSTRUCTION
VIRGINIA PARK REHABILITATION
PROJECT NDP MICH. A-4-2

CONTRACT
NO. PW 6572

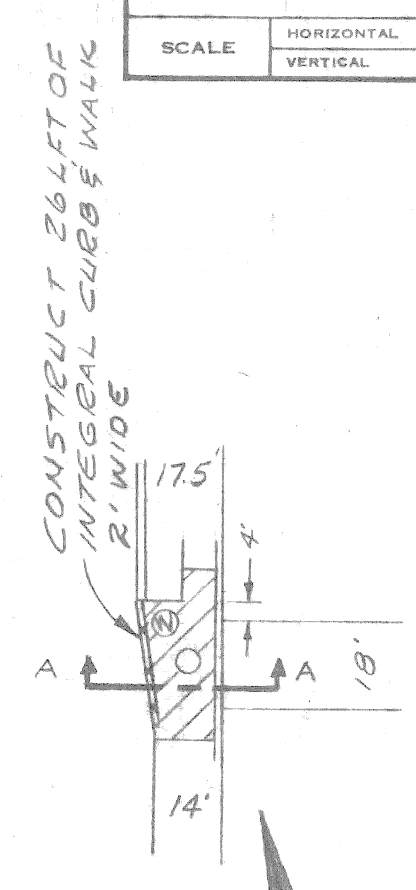
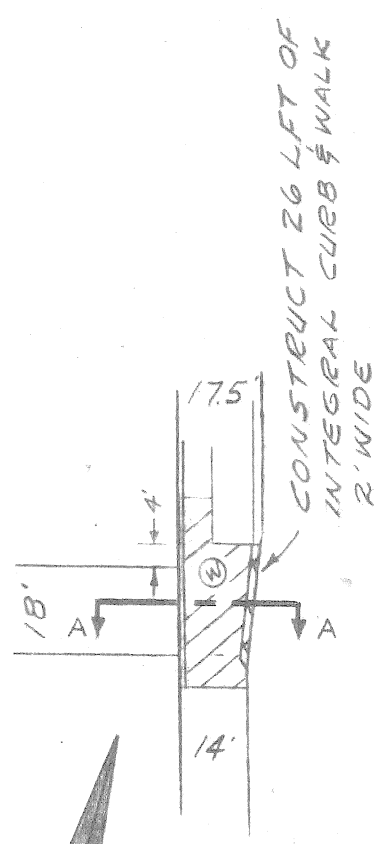
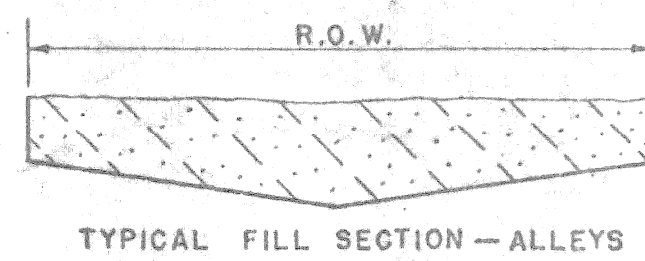
PLANS PREPARED BY
CITY ENGINEERING DEPARTMENT

RECOMMENDED FOR APPROVAL	ENGINEER OF INSPECTION	DATE
RECOMMENDED FOR APPROVAL	<i>Martin D. Swales</i> ENGINEER OF STREETS	9/5/75
APPROVED	DEPUTY DIRECTOR	DATE
APPROVED	DIRECTOR	DATE

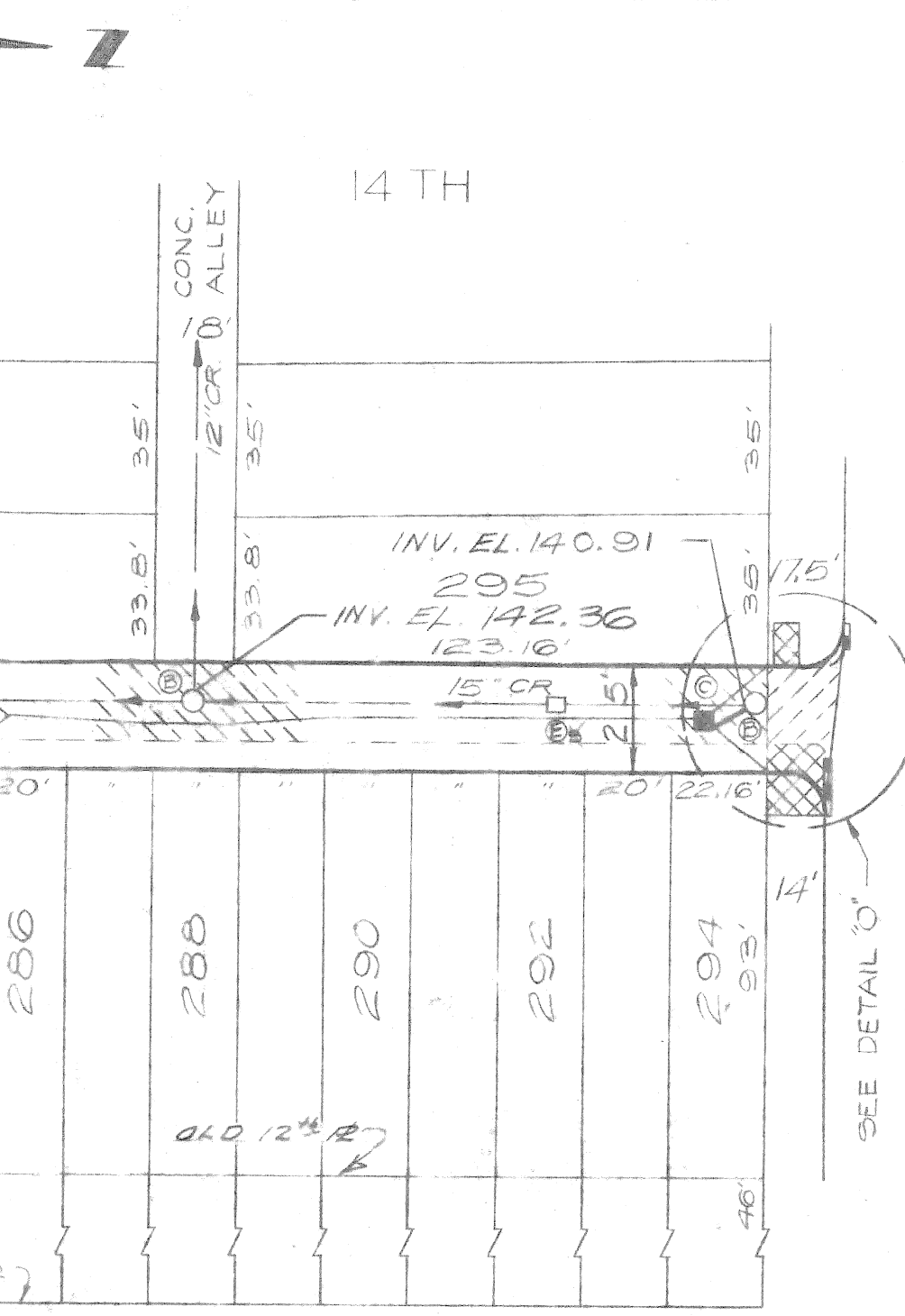
DATE 9-5-75

DRWG. NO. 1 OF 5

NOTE - APPROXIMATELY 119 CYDS. OF SELECTED ETC. MATERIAL ARE REQUIRED FOR THIS SHEET.



SECTION STA. 1+23 TO STA. 1+41
GLADSTONE-HAZELWOOD ALLEY



NOTE - FOR SYMBOLS (A) ETC. SEE STANDARD DETAIL DRAWING NO. C-478

BENCH MARKS	ELEV
P.B.M. 32-250 N.E. COR. 12 TH & EUCLID	152.82
C.B.M. 1 HYD. N.W. COR. 12 TH & BLAINE	157.35
C.B.M. 1 HYD. S.W. COR. 12 TH & GLADSTONE	156.92
C.B.M. 1 HYD. N.W. COR. 12 TH & HAZELWOOD	156.88
P.B.M. 32-251 N.E. COR. 12 TH & ATKINSON	154.987

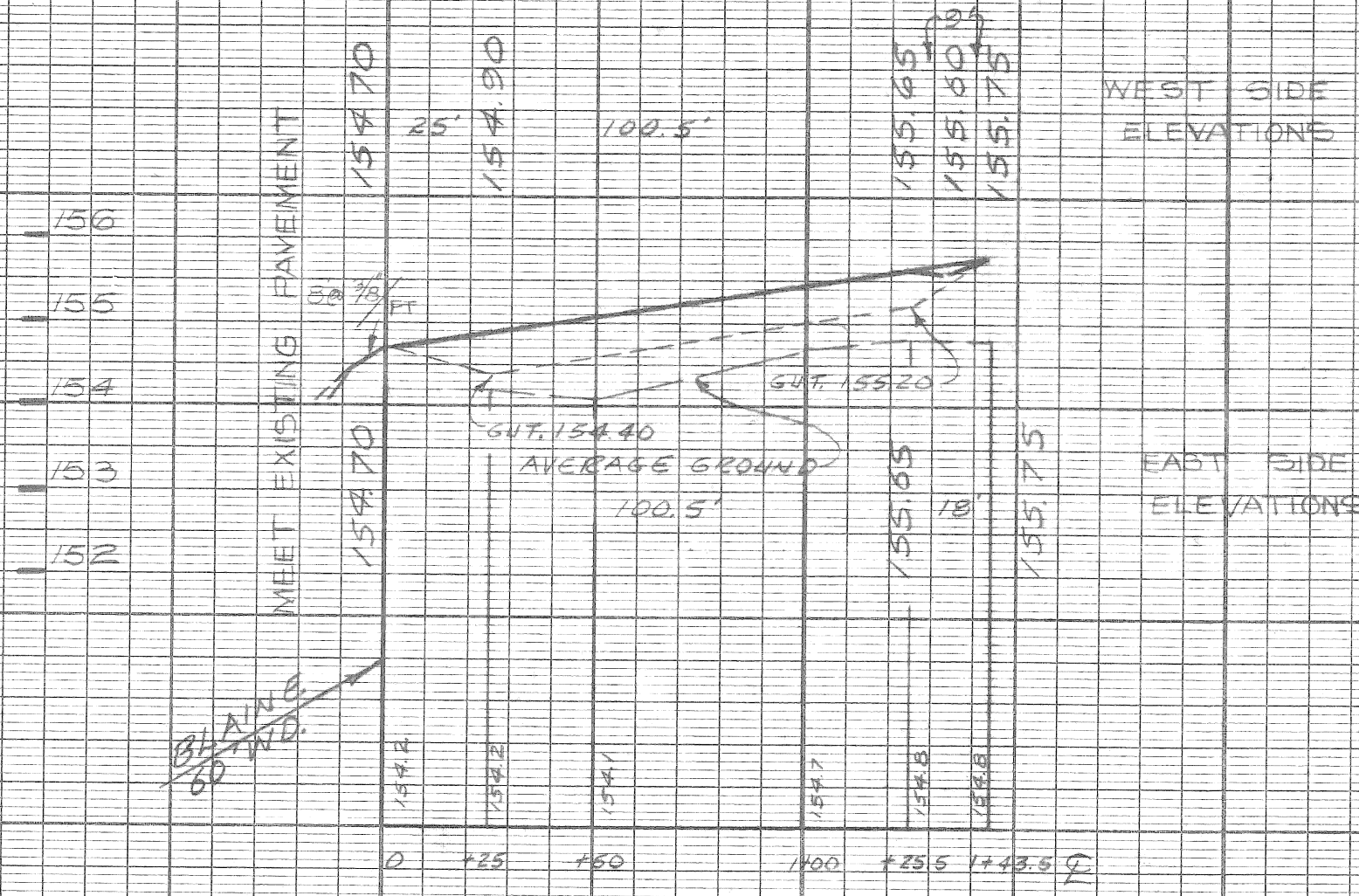
HORIZONTAL CONTROL
PK NAILS ARE LOCATED AT THE INTERSECTION OF THE EXISTING ALLEY C AND E OF THE INTERSECTING STREETS

NOTES
FOR DETAILED QUANTITIES AND CROSS SECTIONS SEE SHEET #4
FOR SECTION A-A SEE SHEET #4

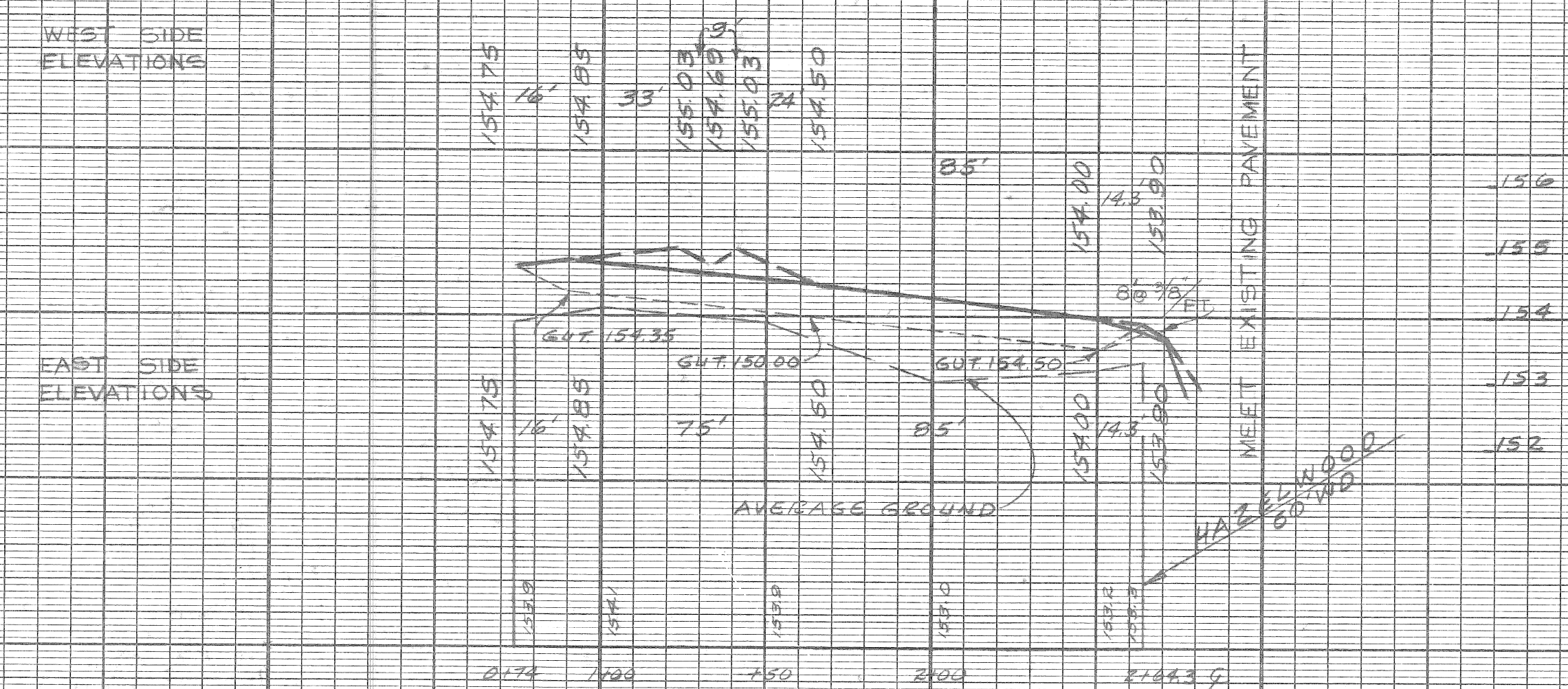
LEGEND

[Symbol]	DRIVEWAY REMOVAL
[Symbol]	STREET PAVEMENT REMOVAL (UNREINF.)
[Symbol]	ALLEY PAVEMENT REMOVAL
[Symbol]	SIDEWALK REMOVAL
[Symbol]	SEPARATE TYPE CURB REMOVAL
[Symbol]	INT. CURB AND WALK - 2' WIDE
[Symbol]	CONSTRUCT 4" STD. SIDEWALK
[Symbol]	CONSTRUCT 6" SIDEWALK
[Symbol]	PROP. CATCH BASIN + 12" SEWER PIPE
[Symbol]	CONSTRUCT STD. C.B. 18" ALI" SPECIALTY
[Symbol]	ABANDON EXISTING CATCH BASIN
[Symbol]	ADJUST EXISTING MANHOLE
[Symbol]	CATCH BASIN SPECIAL ABANDONMENT
[Symbol]	TREE REMOVAL
[Symbol]	BEAM BARRER BARRICADE REMOVAL

Sewer Approved
O'Brien
8/25/75



EDGE OF PAVEMENT PROFILE



DESCRIPTION	DATE	BY	CHECKED BY	APPROVED
PLAN		D.E.U.	W.L.T.	Norm J. Nowas
GRADE		D.E.U.	W.L.T.	ENGINEER OF STREETS
ESTIMATE		W.L.T.	D.E.U.	
FINAL		W.L.T.		

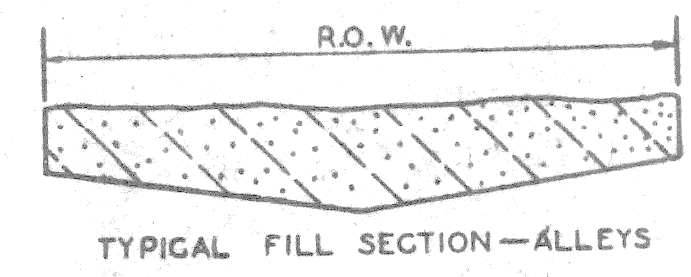
CITY OF DETROIT
CITY ENGINEERING DEPARTMENT
BUREAU OF STREETS AND HIGHWAYS
FOR
COMMUNITY AND ECONOMIC DEVELOPMENT DEPARTMENT

ALLEY PAVEMENT RECONSTRUCTION AND MISCELLANEOUS CONSTRUCTION
VIRGINIA PARK REHABILITATION PROJECT NDP MICH. A-4-2
PAVING PLAN
ALLEYS BOUNDED BY
W-14 TH. E-12 TH. W-14 TH. E-12 TH.
S-BLAINE N-GLADSTONE S-GLADSTONE N-HAZELWOOD

INDEX NO.	48	SHEET	2 OF 5 SHEETS
CONTRACT NO.	318	CONTRACT NO.	PW 6572
ASSIGNMENT NO.	32	ASSIGNMENT NO.	AO 2328
DATE	9-5-75		

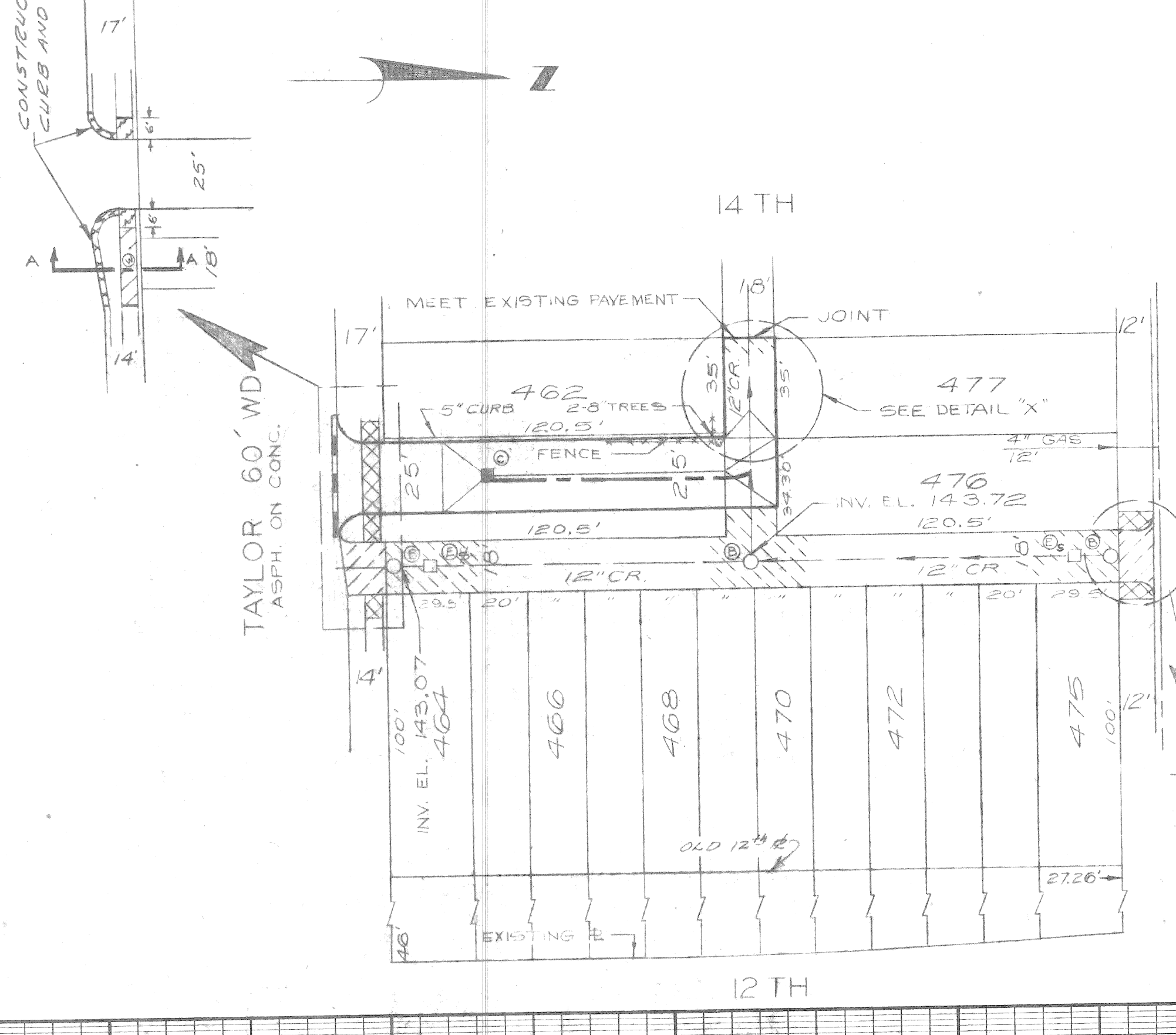
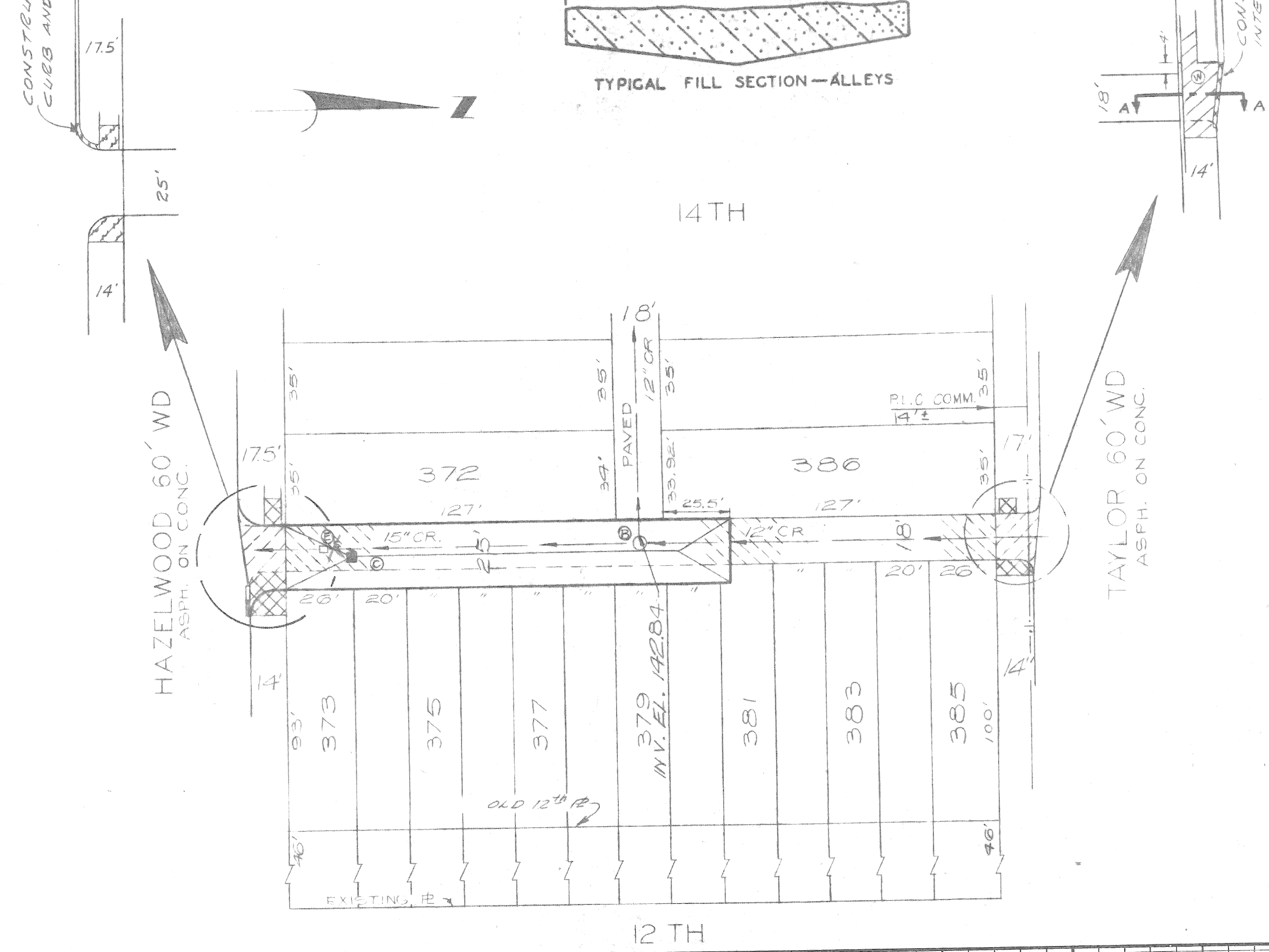
CONSTRUCT INTEGRAL
 CURB AND WALK-2' WIDE

NOTE -
 APPROXIMATELY 206 CYDS OF
 SELECTED EXC. MATERIAL ARE
 REQUIRED FOR THIS SHEET.



CONSTRUCT 26' LFT OF
 INTEGRAL CURB AND
 WALK-2' WIDE

CONSTRUCT INTEGRAL
 CURB AND WALK-2' WIDE

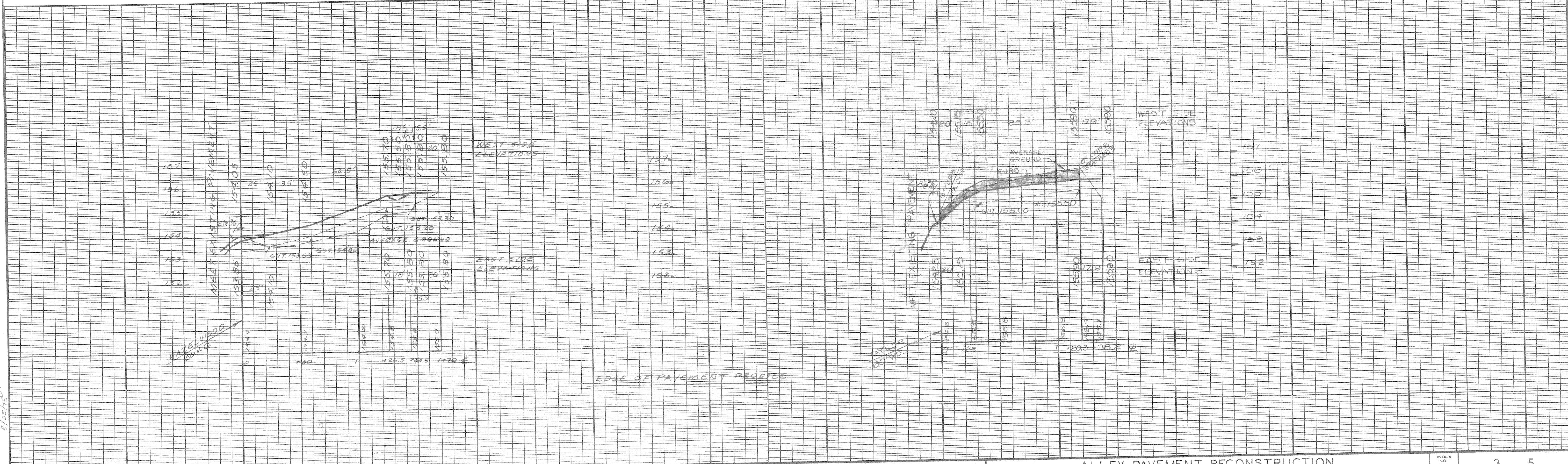
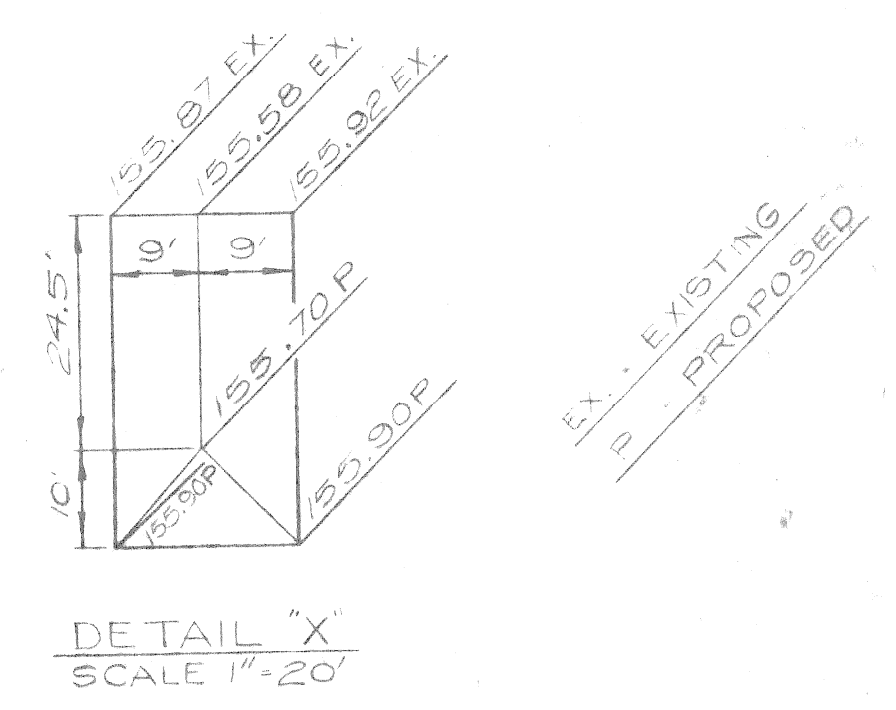


BENCH MARKS

BENCH	MARKS	ELEV
P.B.M.	#32-250 N.E. COR. 12 TH & EUCLID	152.82
C.B.M.	#HYD. N.W. COR. 12 TH & HAZELWOOD	156.88
C.B.M.	#HYD. N.W. COR. 12 TH & TAYLOR	156.48
C.B.M.	#HYD. S.W. COR. 12 TH & CLAIRMOUNT	157.50
P.B.M.	#32-251 N.E. COR. 12 TH & ATKINSON	154.987

HORIZONTAL CONTROL
 PK NAILS ARE LOCATED AT THE INTERSECTION OF
 THE EXISTING ALLEY E AND F OF THE INTERSECTING
 STREETS

NOTES
 FOR DETAILED QUANTITIES AND CROSS-
 SECTIONS SEE SHEET #4
 FOR LEGEND SEE SHEET #2



Sewer Approved
 G. B. W. 8/25/75

PLAN	BY: W.C. L.	CHECKED BY: W.L.T.	APPROVED: W. J. ...
GRADE	W.L.T.	W.C. L.	ENGINEER OF STREETS
ESTIMATE	W.L.T.	G.B.W.	FOR
DESCRIPTION	DATE	DATE	COMMUNITY AND ECONOMIC DEVELOPMENT DEPARTMENT

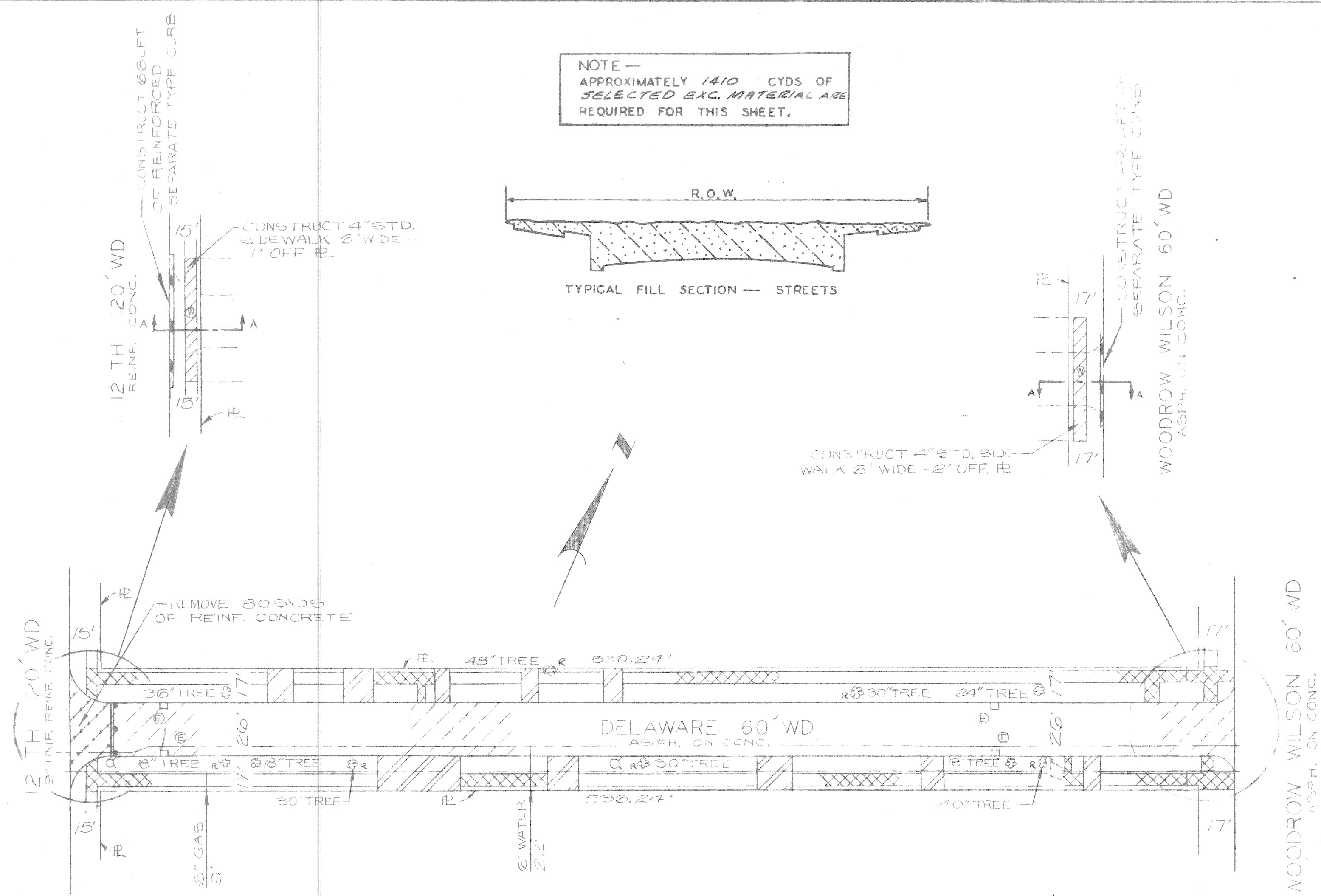
CITY OF DETROIT
 CITY ENGINEERING DEPARTMENT
 BUREAUS OF STREETS AND HIGHWAYS
 FOR
 COMMUNITY AND ECONOMIC DEVELOPMENT DEPARTMENT

ALLEY PAVEMENT RECONSTRUCTION
 AND MISCELLANEOUS CONSTRUCTION
 VIRGINIA PARK REHABILITATION PROJECT NDP MICH. A-4-2
 PAVING PLAN
 ALLEYS BOUNDED BY
 W-14 TH. E-12 TH. S-HAZELWOOD N-TAYLOR. S-TAYLOR N-CLAIRMOUNT

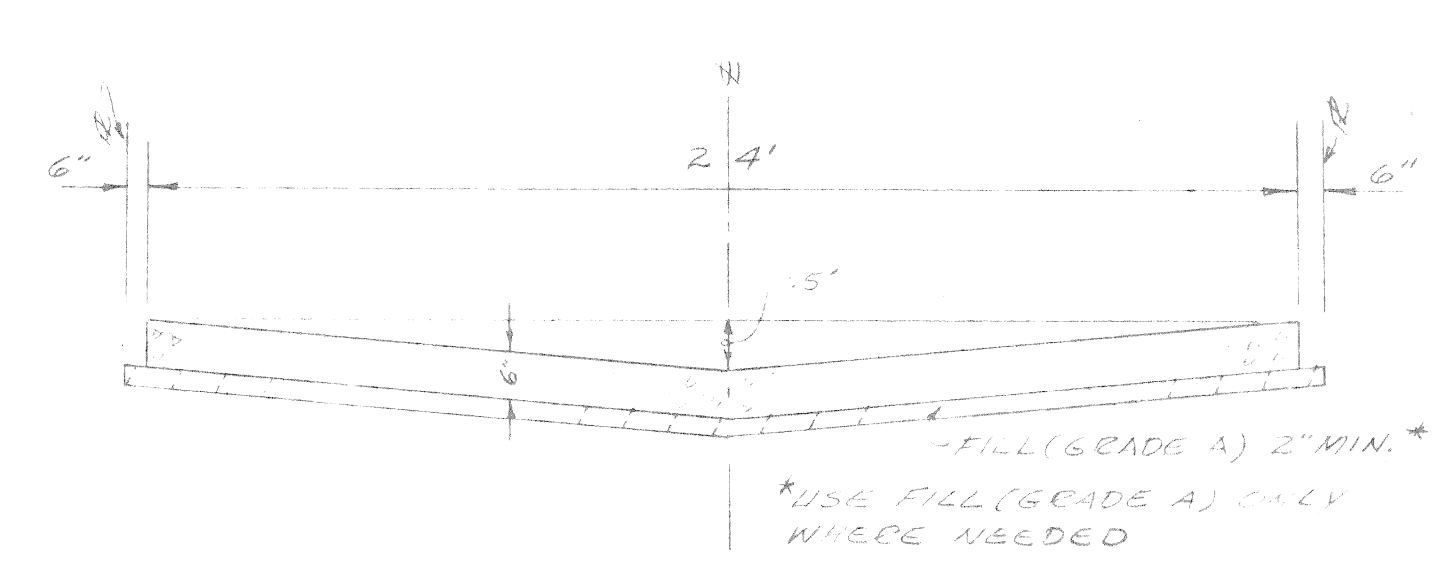
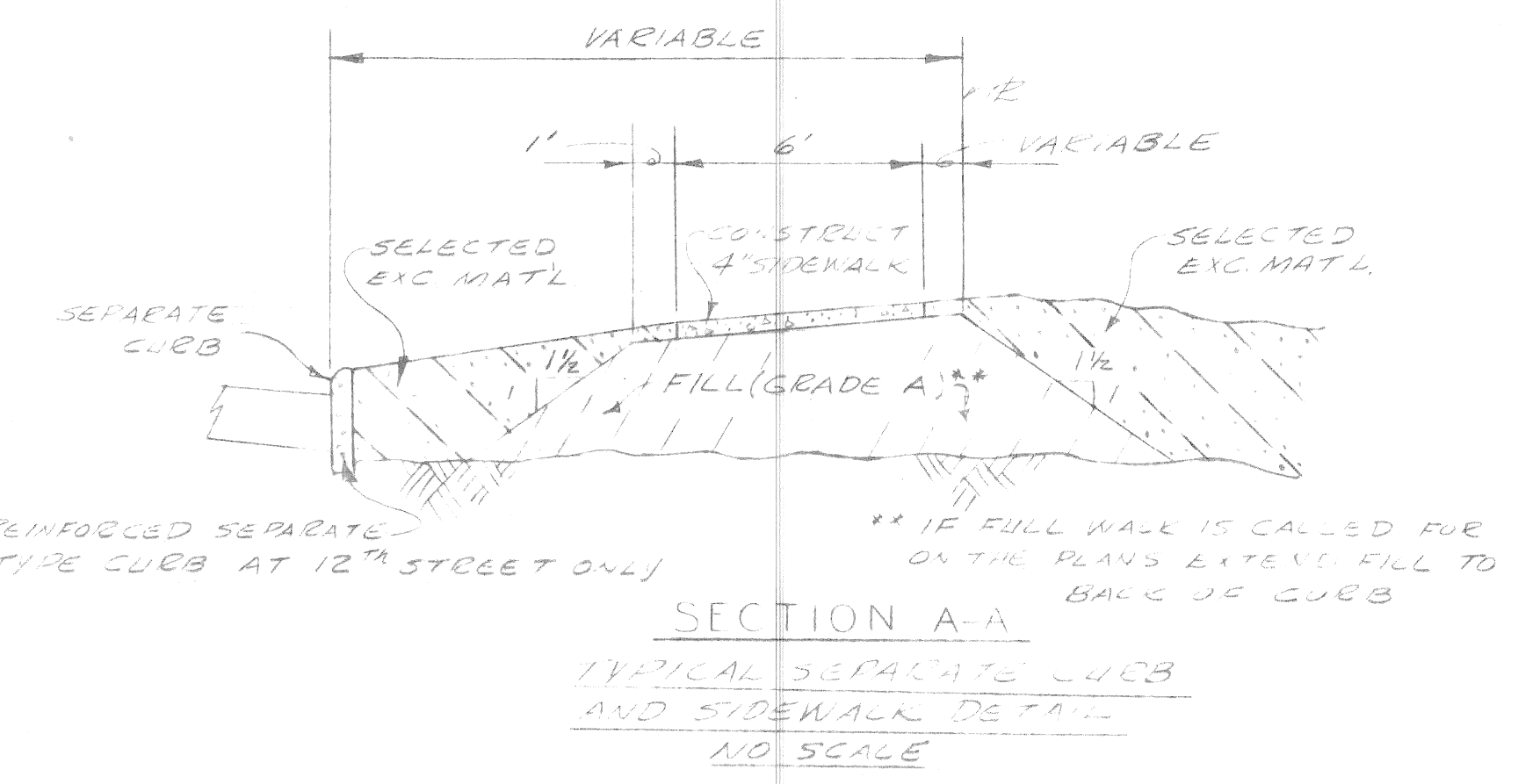
INDEX NO.	18	SHEET 3 OF 5 SHEETS
FORM NO.	318	CONTRACT NO. PW 6572
INDEXED	32	ASSIGNMENT NO. A0 2328
		DATE 9-5-75

ITEM NO.	DESCRIPTION	UNIT	14 TH -12 TH BLANE GLADSTONE	14 TH -12 TH GLADSTONE HAZELWOOD	14 TH -12 TH HAZELWOOD TAYLOR	14 TH -12 TH TAYLOR CLAREMOUNT	DELAWARE	TOTAL
1	EXCAVATION	CYDS	143	125	153	128		549
2	BEEM GRADING	SYDS				34		34
3	STREET PAV'T REMOVAL-UNREINFORCED	SYDS	65	66	66	60	1671	1928
4	STREET PAV'T REMOVAL-REINFORCED	SYDS					80	80
5	ALLEY PAVEMENT REMOVAL	SYDS	567	529	544	658		2298
6	SIDEWALK REMOVAL	SFT	138	155	276	222	6241	7032
7	DRIVEWAY REMOVAL	SFT					2175	2175
8	SEPARATE TYPE CURB EML-UNREINF	LFT	21	21		45		87
9	INTEGRAL CURB AND WALK REMOVAL	LFT			21			21
10	NON-REINFORCED CONCRETE EML.	CYDS	10	10	10			30
11	TREE REMOVAL 13"-18" DIA.	EACH					1	1
12	TREE REMOVAL 30" DIA.	EACH					3	3
13	TREE REMOVAL 40" DIA.	EACH					1	1
14	TREE REMOVAL 48" DIA.	EACH					1	1
15	GRADING ABANDONED STREETS	SYDS					3575	3575
16	GRADING ABANDONED ALLEYS	SYDS	279	148	204	533		1169
17	FILL-(GRADE A)	CYDS	103	34	101	9		307
18	MANHOLE ADJUSTMENT	EACH	2	3	1	3		9
19	MANHOLE-RECONSTRUCT CONE	EACH						1
20	CATCH BASIN-ABANDONMENT	EACH	2	2	2	2	4	311
21	CATCH BASIN-SPECIAL ABANDONMENT	EACH	2	2	2	2		32
22	CATCH BASIN-18"x13" SPECIAL 'Y'	EACH	1	1	1	1		4
23	SEWERS-12" PIPE C-76 III	LFT	25	15	25	35		160
24	SIDEWALK-4" STANDARD	SFT	378	378	372	216	720	2264
25	SIDEWALK-6" STANDARD	SFT	72	155	155	72		454
26	PAVEMENT-6" UNIFORM CONCRETE	SYDS	383	508	455	441		1786
27	PAVEMENT-6" UNIF CONC WITH INT. CURB	SYDS	43	50	50	54		203
28	SEPARATE TYPE CURB-NON-REINFORCED	LFT					46	46
29	SEPARATE TYPE CURB-REINFORCED	LFT					66	66
30	INTEGRAL CURB AND WALK-2' WIDE	LFT	26	26	36	83		171
31	INTEGRAL CURB-TYPE IV-5" HEIGHT	LFT				120		120
32	TEST CORES	EACH	1	1	1	1		4
33	LONGITUDINAL DUMMY-GROVE CONT. ST.	LFT	144	130	170	174		678
34	BEAM BARCEL BARRICADE REMOVAL	EACH					1	1
35	MAINTAINING TRAFFIC	L.S.						LUMP SUM
36	SEWER ALTERATIONS	L.S.						FOR QUANTITIES SEE SHEET #5

NOTE - APPROXIMATELY 1410 CYDS OF SELECTED EXC. MATERIAL ARE REQUIRED FOR THIS SHEET.



REMOVAL PLAN
SCALE 1/4"=1'-0"



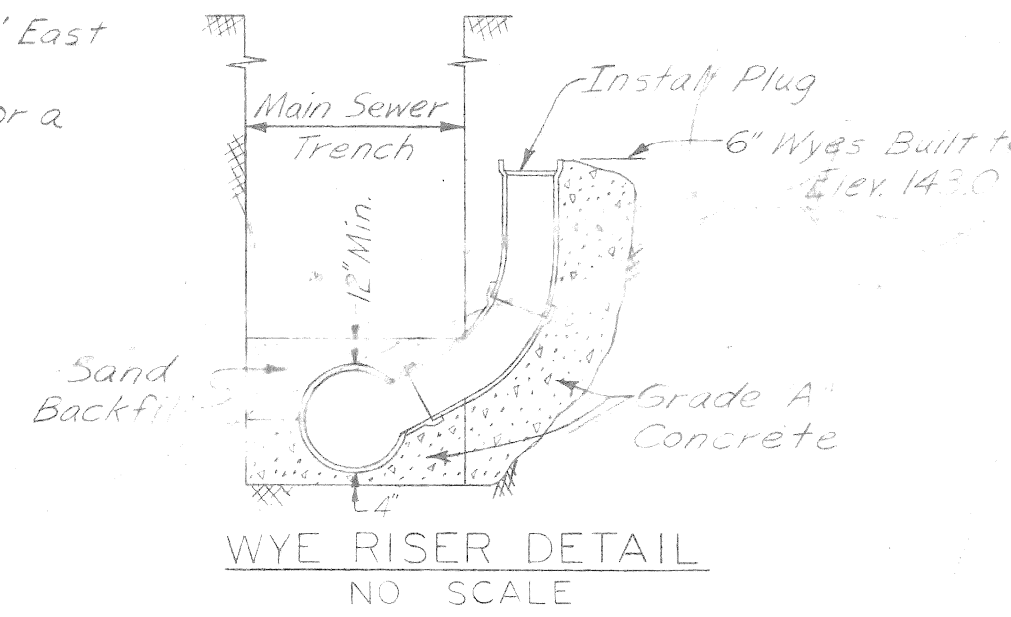
NOTES
1. IF BASEMENTS ARE ENCOUNTERED IN THE PROPOSED ALLEY ROW EXCAVATION, AND BACKFILL AS DIRECTED BY THE ENGINEER.
2. FOR LEGEND SEE SHEET #2.

Sewer Approved
C. Gilbert
12/15/75

REVISIONS LOCATED BY COORDINATES ON SHEET COOR. DESCRIPTION 1 2 3 4 5 6 7 8 9 10 11		REFERENCE DRAWINGS DESIGNED BY DRAWN BY TRACED BY CHECKED BY W.L.T.	APPROVED: <i>James R. ...</i> ENGINEER OF STREETS	CITY OF DETROIT CITY ENGINEERING DEPARTMENT FOR COMMUNITY AND ECONOMIC DEVELOPMENT DEPARTMENT	ALLEY PAVEMENT RECONSTRUCTION AND MISCELLANEOUS CONSTRUCTION VIRGINIA PARK REHABILITATION PROJECT NDP MICH. A-4-2 REMOVAL PLAN, TYPICAL SECTIONS, AND QUANTITIES	SHEET 4 OF 5 SHEETS CONTRACT No. PW 6572 ASSIGNMENT NO. AO 2328 DATE 9-5-75
---	--	---	---	--	--	--

Notes Continued:

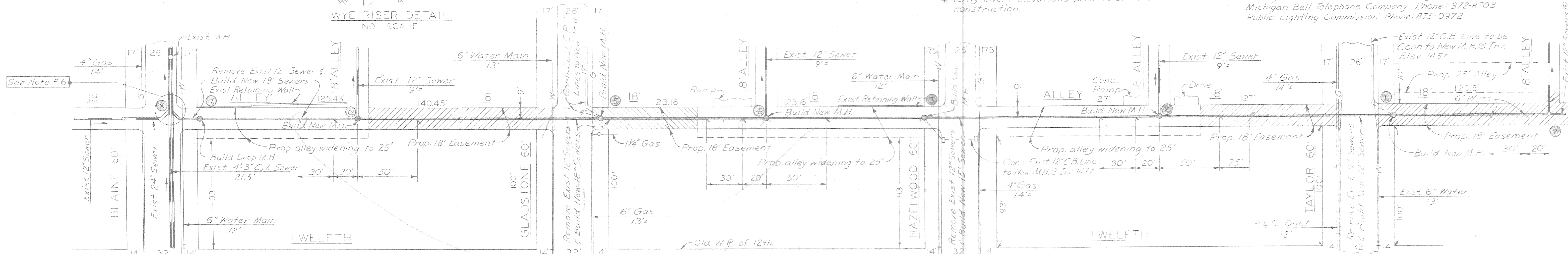
6. 18" connection shall be made a Min. of 4.5' East or West of the Exist. 24" connection. The connection can be made at either a 45° or a 60° angle in order to satisfy the above condition.



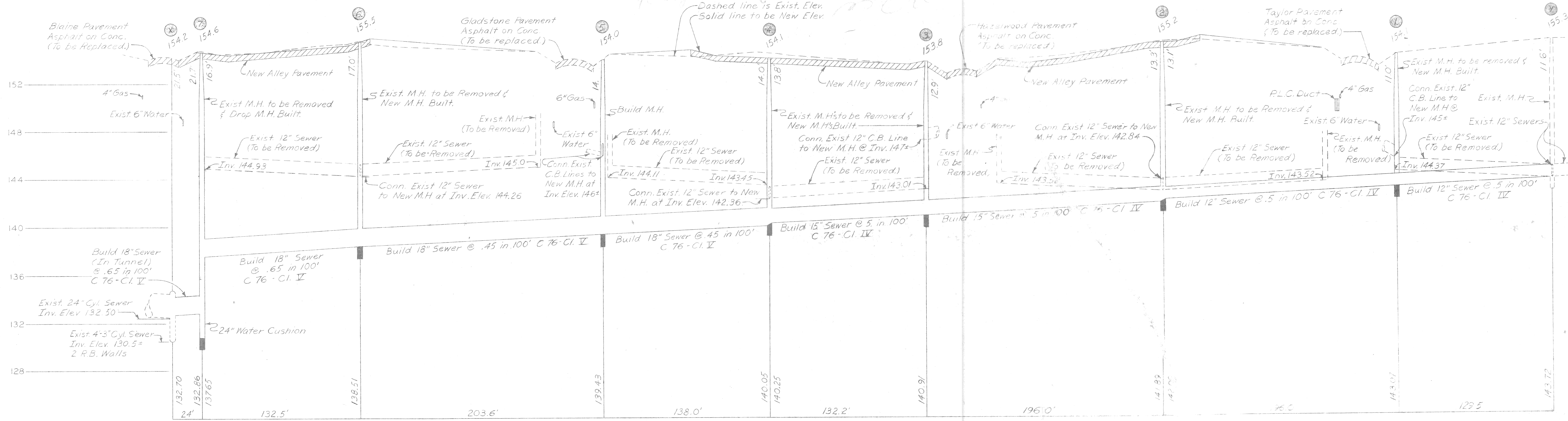
Notes:

- 6" wyes shall be placed at the locations shown in plan. Wyes shall be extended up to elevation 143.0. The Wyes shall be C-200 extra strength clay pipe.
- Connect all existing live connections to the new sewer.
- The utilities and their locations are shown in accordance with the best available records. No guarantee is made as to completeness or accuracy.
- Verify invert elevations prior to start of construction.

5. In compliance with Public Act 53 of the State of Michigan (Effective Aug. 1, 1974) the contractor shall notify, in advance of construction, all private and public owners having existing facilities in or near the immediate working area. For convenience, the known utility owners are listed on this drawing. This listing does not, however, relieve the contractor of the responsibility of verifying utility locations and notifying all utility owners and "MISS-DIG" (Phone 6477-344 in area code 313).
 Detroit Edison Company Phone: 237-8000
 Michigan Consolidated Gas Company Phone: 965-8000
 Michigan Bell Telephone Company Phone: 372-8703
 Public Lighting Commission Phone: 875-0972



g. ...
 PLAN Scale: 1"=40'
A. Fong will review
to be allowed



DESIGNED BY <i>W.D.</i>		APPROVED <i>W.D. Wilson</i>		DETROIT METRO WATER DEPARTMENT ENGINEERING DIVISION CENTRAL DISTRICT SECTION MAP TOWN RANGE SECTION SECTION CODE WORK ORDER NO.				M.S.P. PERMIT NO.
DRAWN BY <i>William Baker Jr.</i>		HEAD ENGINEER-WATER SYSTEM						ALLEY PAVEMENT RECONSTRUCTION AND MISCELLANEOUS CONSTRUCTION VIRGINIA PARK REHABILITATION PROJECT NDP MICH A-4-2 SEWER ALTERATIONS-LATERAL SEWER NO. 7280
CHECKED BY <i>W.D.</i>		DIRECTOR OF ENGINEERING		SCALE AS SHOWN DATE OCTOBER 1, 1975				CONTRACT NO.
CO-OR.	DESCRIPTION REVISIONS	APRVD.	DATE	ENGINEER-WATER SYSTEM				D-