

CITY OF DETROIT
ENGINEERING DEPARTMENT
COMMUNITY AND ECONOMIC DEVELOPMENT DEPARTMENT

FOR
CANNIF AVENUE WIDENING
PROFILES, OAKLAND AVE. TO STA. 510+00

DATE NOV 17 1975
ASSIGNMENT 2193(2)
CONTRACT No. RW.6569

CHECKED BY R.B.P.
TRACED BY
DRAWN BY M.A.P./J.R.D.
DESIGNED BY COMPLY/I.H.K.

APPROVED:
ENGINEER OF EXPRESSWAYS

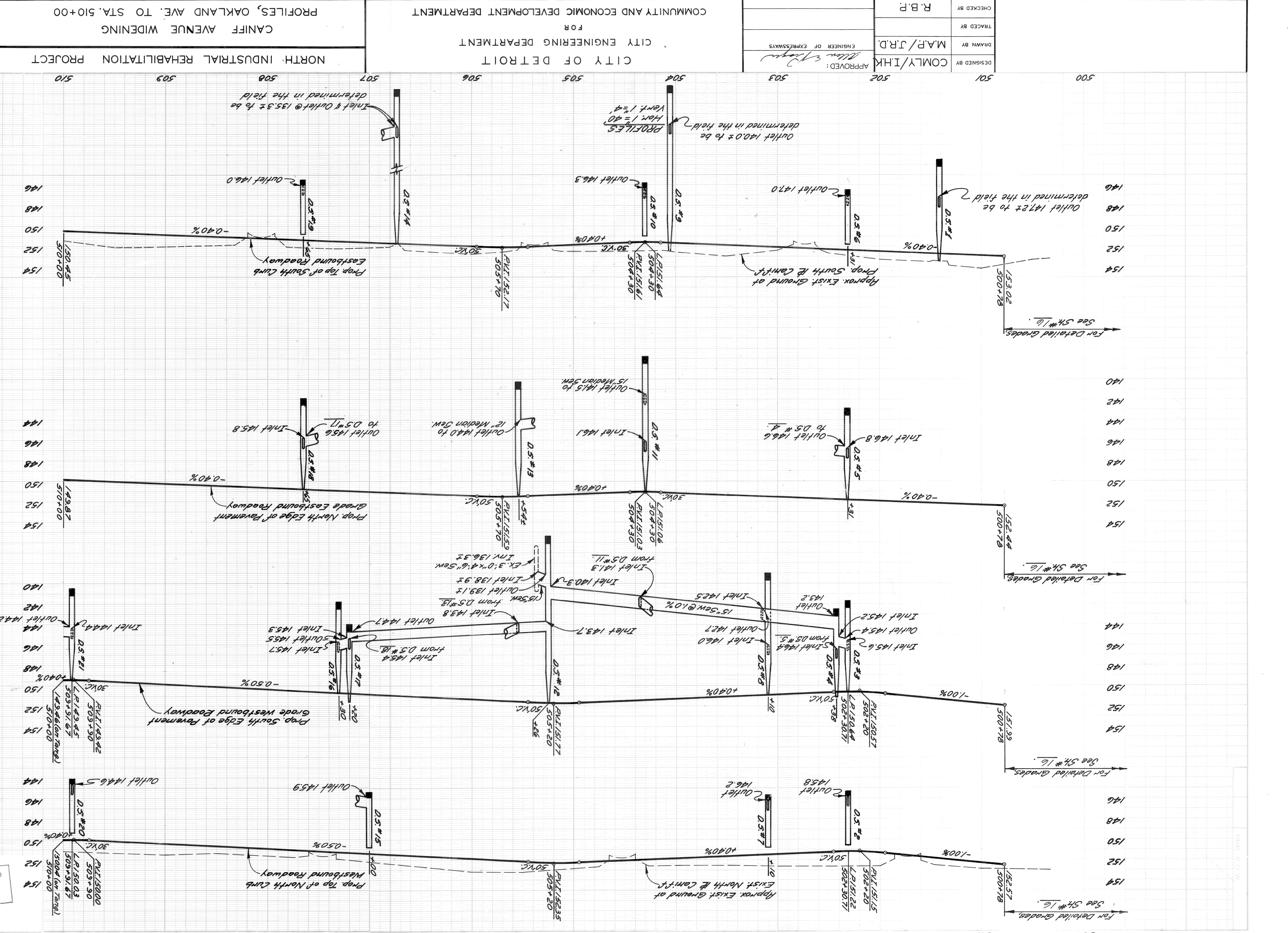
CITY OF DETROIT
ENGINEERING DEPARTMENT
COMMUNITY AND ECONOMIC DEVELOPMENT DEPARTMENT

FOR
CANNIF AVENUE WIDENING
PROFILES, OAKLAND AVE. TO STA. 510+00

DATE NOV 17 1975
ASSIGNMENT 2193(2)
CONTRACT No. RW.6569

CHECKED BY R.B.P.
TRACED BY
DRAWN BY M.A.P./J.R.D.
DESIGNED BY COMPLY/I.H.K.

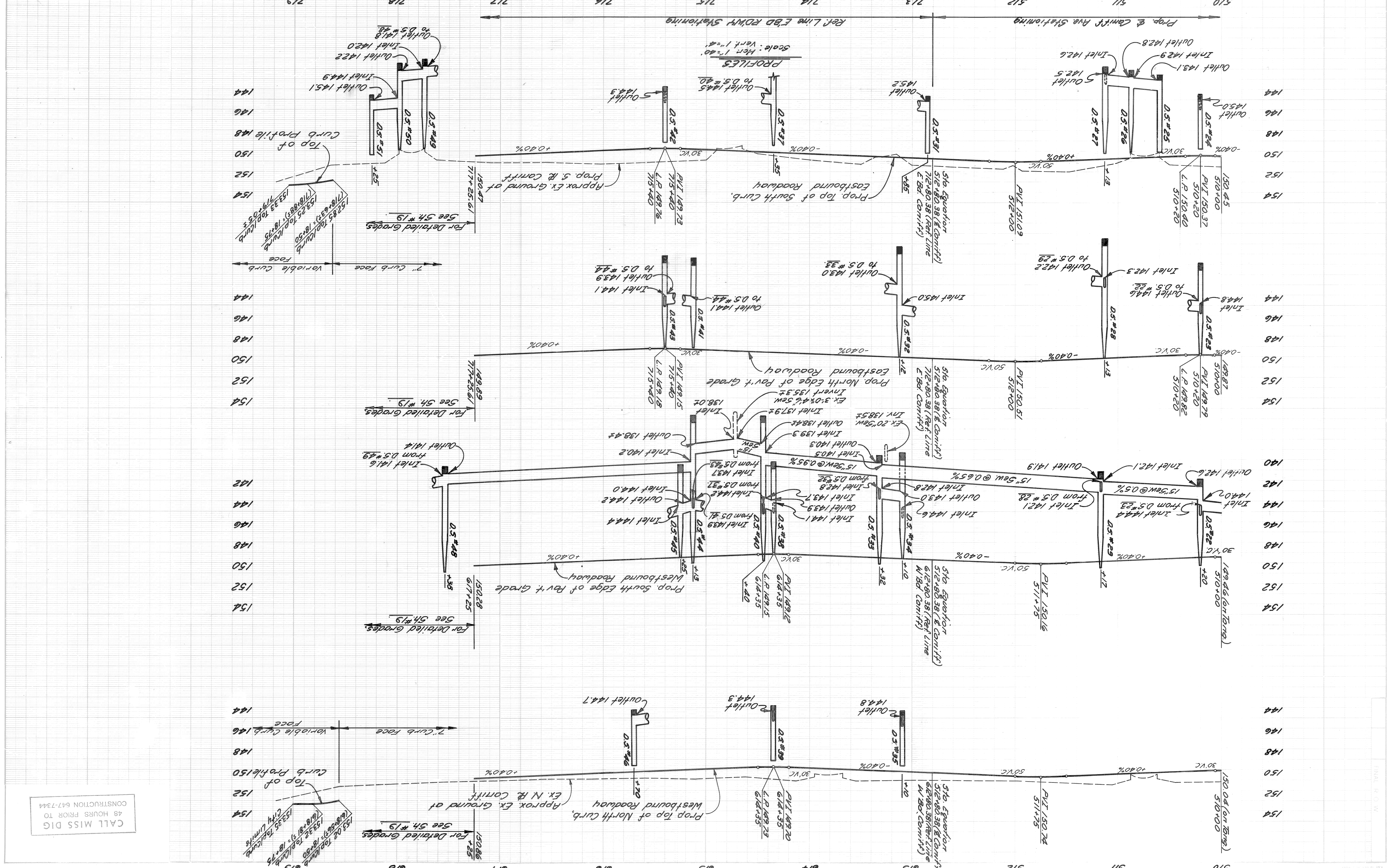
APPROVED:
ENGINEER OF EXPRESSWAYS



CALL MISS DIG
48 HOURS PRIOR TO
CONSTRUCTION 647-7344

PLAN
R.O.V.

DATE NOV 17 1975	ASSIGNMENT No. 2193 (2)	CONTRACT No. FW6569	SHEET 15 OF 95 SHEETS
CANIFF AVENUE WIDENING NORTH INDUSTRIAL REHABILITATION PROJECT			
CITY OF DETROIT CITY ENGINEERING DEPARTMENT			
COMMUNITY AND ECONOMIC DEVELOPMENT DEPARTMENT FOR			
PROFILES, STA. 510+00 TO DETROIT CITY LIMITS			
DESIGNED BY	COMLY/IHK	APPROVED:	<i>[Signature]</i>
DRAWN BY	M.S.	ENGINEER OF	EXPRESSWAYS
TRACED BY			
CHECKED BY	R.B.P.		

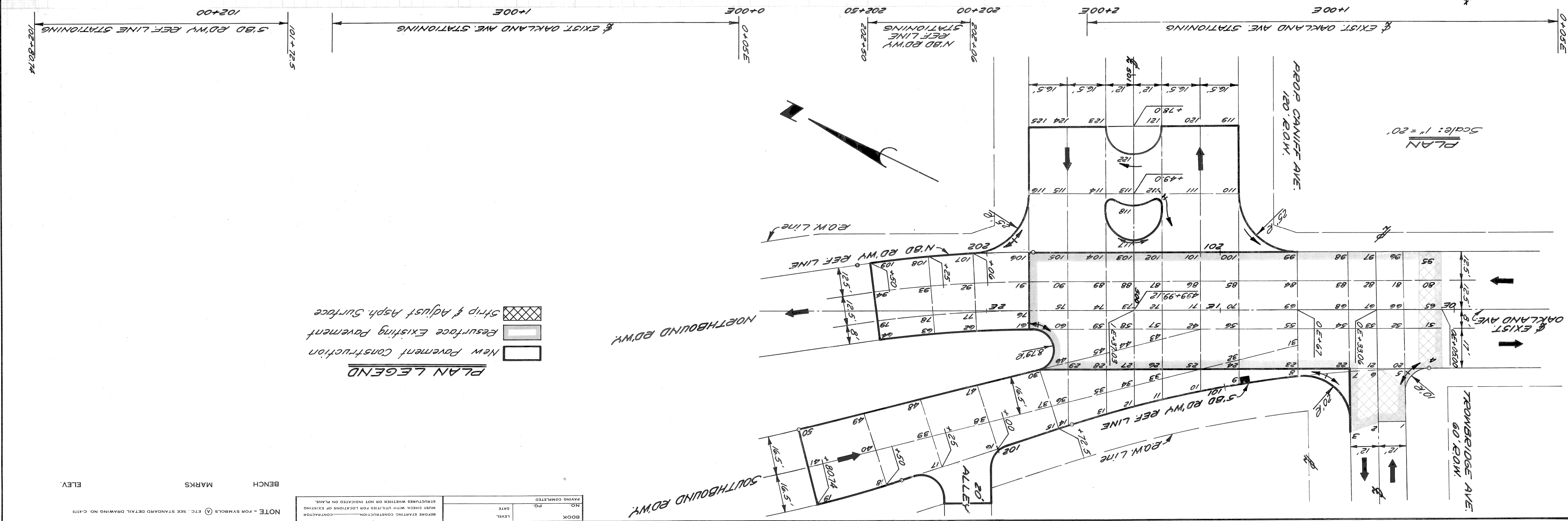
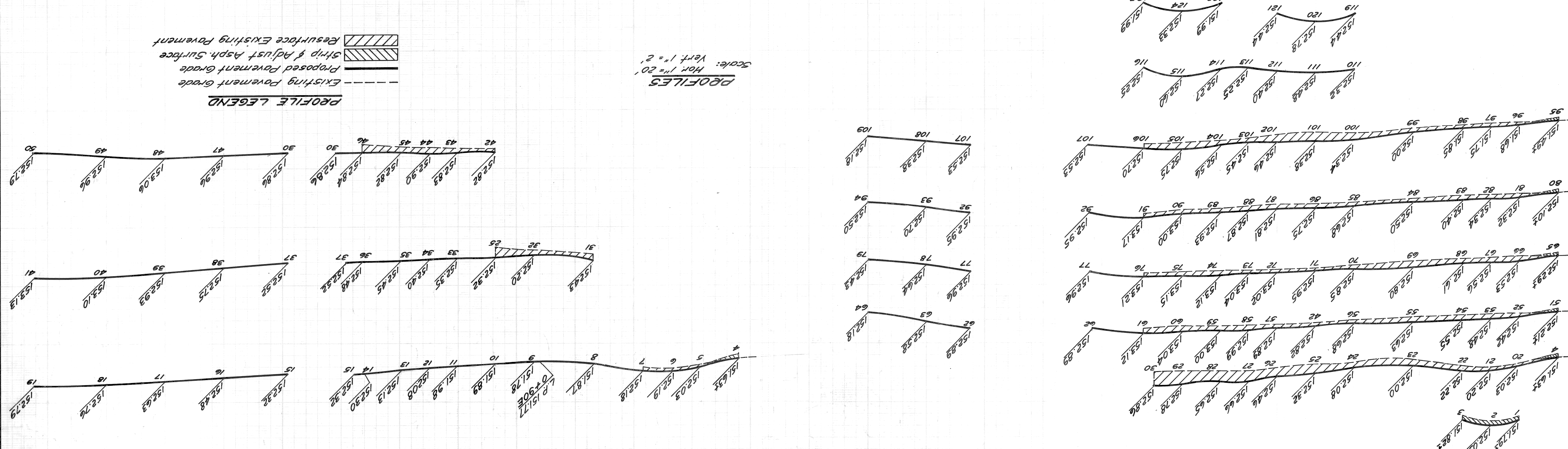


DATE	NOV 17 1975
ASSIGNMENT NO.	2193 (2)
CONTRACT NO.	R.W.6569
SHEET OF SHEETS	16 OF 95

OAKLAND AVENUE WIDENING
NORTH INDUSTRIAL REHABILITATION PROJECT

CITY OF DETROIT
CITY ENGINEERING DEPARTMENT
FOR
COMMUNITY AND ECONOMIC DEVELOPMENT DEPARTMENT

APPROVED BY	Checked by	PLAN	BY
<i>M. E. [Signature]</i>	COMPLY	M.A.P.	COMPLY
ENGINEER OF EXPRESSWAYS	ENGINEER	GRADE	D.R.L.
		ESTIMATE	COMPLY
		REVISIONS	



NOTE - FOR SYMBOLS (A) ETC. SEE STANDARD DETAIL DRAWING NO. C-177
 BOOK NO. _____ LEVEL _____ DATE _____
 DRAWING COMPLETED BY _____ CONTRACTOR _____
 MUST CHECK WITH UTILITIES FOR LOCATIONS OF EXISTING STRUCTURES WHETHER OR NOT INDICATED ON PLANS.
 BEFORE STARTING CONSTRUCTION.