

CITY OF DETROIT

CITY ENGINEERING DEPARTMENT

PLANS FOR PROPOSED

PAVING OF HANCOCK FROM BRUSH TO ST. ANTOINE,
CURB AND SIDEWALK REPLACEMENT ON BRUSH FROM CANFIELD
TO WARREN, AND MISCELLANEOUS PAVEMENT REMOVAL
MEDICAL CENTER REHABILITATION PROJECT NO. 3

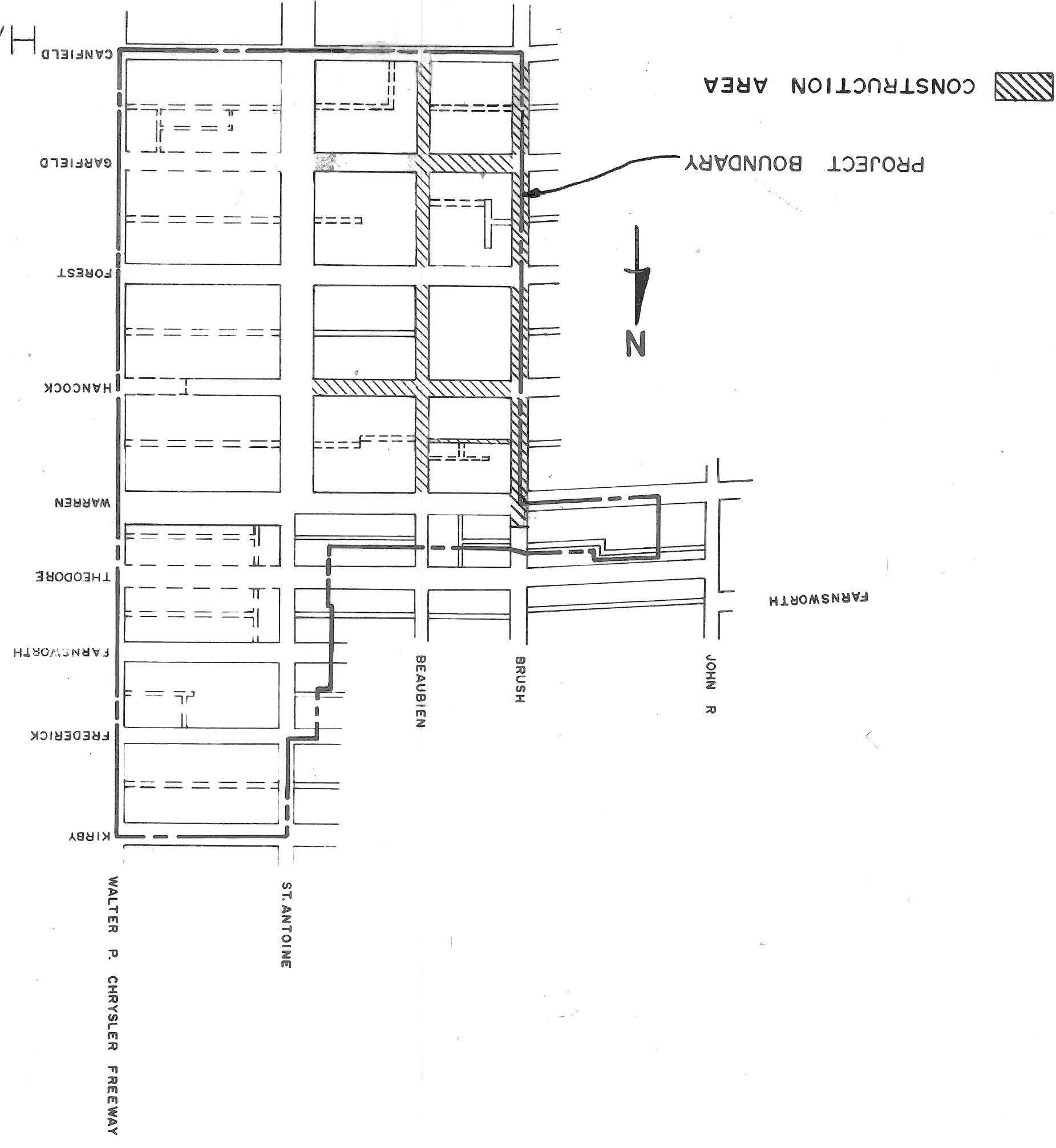
MICH. R-112

FOR

COMMUNITY AND ECONOMIC DEVELOPMENT DEPARTMENT

INDEX OF SHEETS

1. TITLE SHEET
2. TYPICAL SECTIONS OF HANCOCK
3. REMOVAL & UTILITIES OF HANCOCK
4. PAVING PLAN
5. P.L.D. PLANS
6. TREE LAYOUT
7. CURB & SIDEWALK REPLACEMENT
8. SEWER ALTERATIONS
- 9-15. WATER SYSTEM ALTERATIONS
16. REMOVAL & UTILITIES OF BEAUBIEN
GARFIELD AND ALLEY
17. QUANTITY SHEET
18. P.L.D. STANDARDS

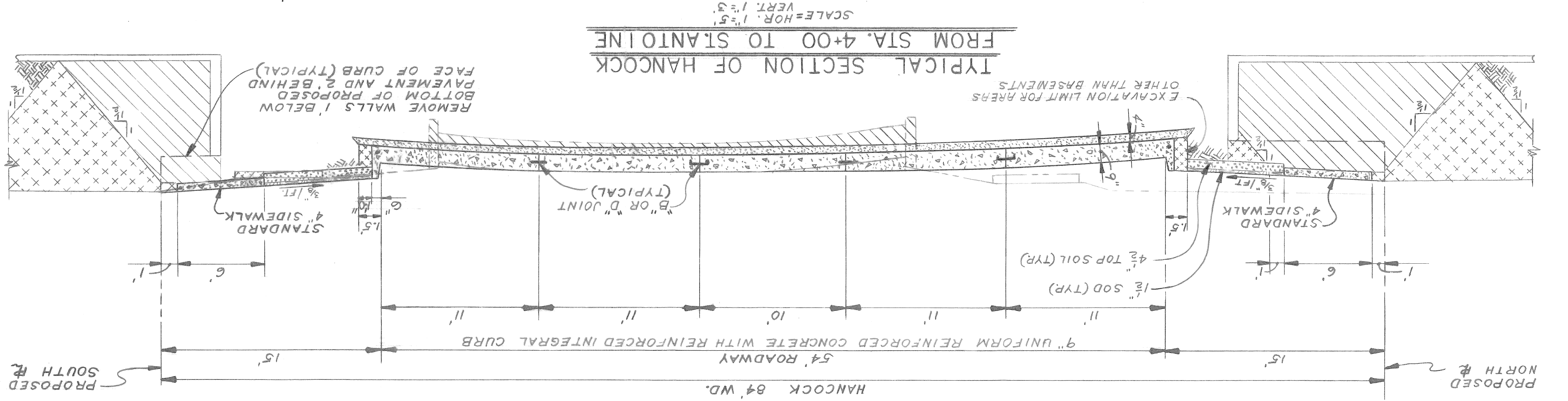
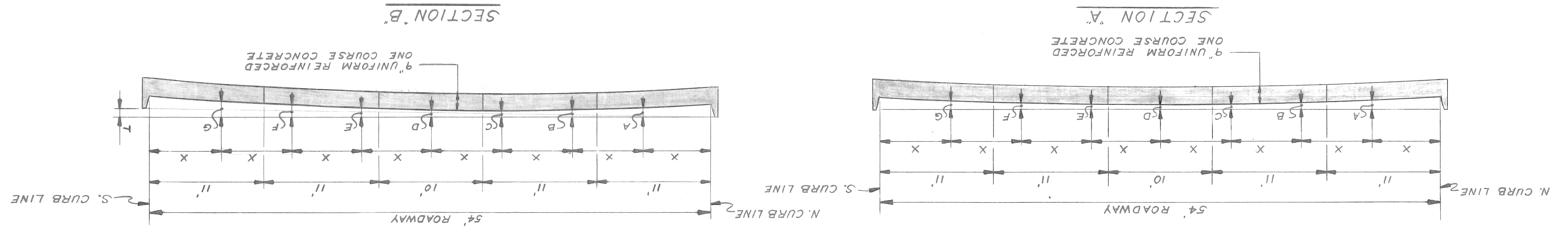


PROJECT: PAVING OF HANCOCK FROM BRUSH TO ST. ANTOINE, CURB AND SIDEWALK REPLACEMENT ON BRUSH FROM CANFIELD TO WARREN, AND MISCELLANEOUS PAVEMENT REMOVAL MEDICAL CENTER REHABILITATION PROJECT NO. 3 MICH. R-112	
CONTRACT NO.	P W 6564
PLANS PREPARED BY CITY ENGINEERING DEPARTMENT	
RECOMMENDED FOR APPROVAL ENGINEER OF INSPECTION DATE: 1/14/75 G.C. Morrison	
RECOMMENDED FOR APPROVAL ENGINEER OF STREETS DATE: 1/14/75 Norm B. Rawlins	
APPROVED DEPUTY DIRECTOR DATE: 1/14/75 W.B. [Signature]	
APPROVED DIRECTOR DATE: 1/14/75 H.T. Cobby	
DATE JANUARY 6, 1975	
DRWG. NO. 101 OF 17	

SHEET 2 OF 17 SHEETS CONTRACT NO. PW 6564 ASSIGNMENT NO. AO 2052 A DATE 1-6-75	CITY OF DETROIT FOR CITY ENGINEERING DEPARTMENT COMMUNITY AND ECONOMIC DEVELOPMENT DEPARTMENT	<table border="1" style="width:100%; border-collapse: collapse;"> <tr> <th style="text-align: left;">DESIGNED BY</th> <th style="text-align: left;">DRAWN BY</th> <th style="text-align: left;">CHECKED BY</th> </tr> <tr> <td>M. H. Morris III</td> <td>R. Rosik</td> <td>M. H. Morris III</td> </tr> <tr> <td style="text-align: center;">APPROVED</td> <td colspan="2"></td> </tr> <tr> <td style="text-align: center;">ENGINEER OF STREETS</td> <td colspan="2"></td> </tr> </table>	DESIGNED BY	DRAWN BY	CHECKED BY	M. H. Morris III	R. Rosik	M. H. Morris III	APPROVED			ENGINEER OF STREETS		
DESIGNED BY	DRAWN BY	CHECKED BY												
M. H. Morris III	R. Rosik	M. H. Morris III												
APPROVED														
ENGINEER OF STREETS														
PAVING OF HANCOCK FROM BRUSH TO ST. ANTOINE MEDICAL CENTER REHABILITATION PROJECT NO. 3 MICH R-112														
TYPICAL SECTIONS FOR HANCOCK														

ELEMENTS OF CONCRETE SLAB SECTION

PAVEMENT WIDTH	CURB FACE	T	A	B	C	D	E	F	G
54" A	7"	6:9"	0	4 5/8"	2 1/8"	1 5/8"	1 5/8"	1 5/8"	4 5/8"
54" B	7"	6:9"	0.4'	5 3/4"	3 3/4"	4"	4 1/8"	6 9/16"	6 13/16"
* DISTANCE BELOW TOP OF CURB AT LETTERED POINTS IN SECTION "A" AND BELOW TOP OF HIGH CURB IN SECTION "B"									



NOTES:

- 1 CONCRETE PAVEMENT SHALL BE REINFORCED IN ACCORDANCE WITH DETAIL DRAWING C-4942.
- 2 INTEGRAL REINFORCED CONCRETE CURB SHALL BE IN ACCORDANCE WITH STANDARD DETAIL DRAWING C-4943.
- 3 JOINTS IN THE PAVEMENT SHALL BE IN ACCORDANCE WITH STANDARD DETAIL DRAWINGS C-4991, C-4992, AND C-4943.
- 4 SEE SHEET 4 OF PAVING PLANS FOR LOCATION OF STANDARD 6" SIDEWALKS.

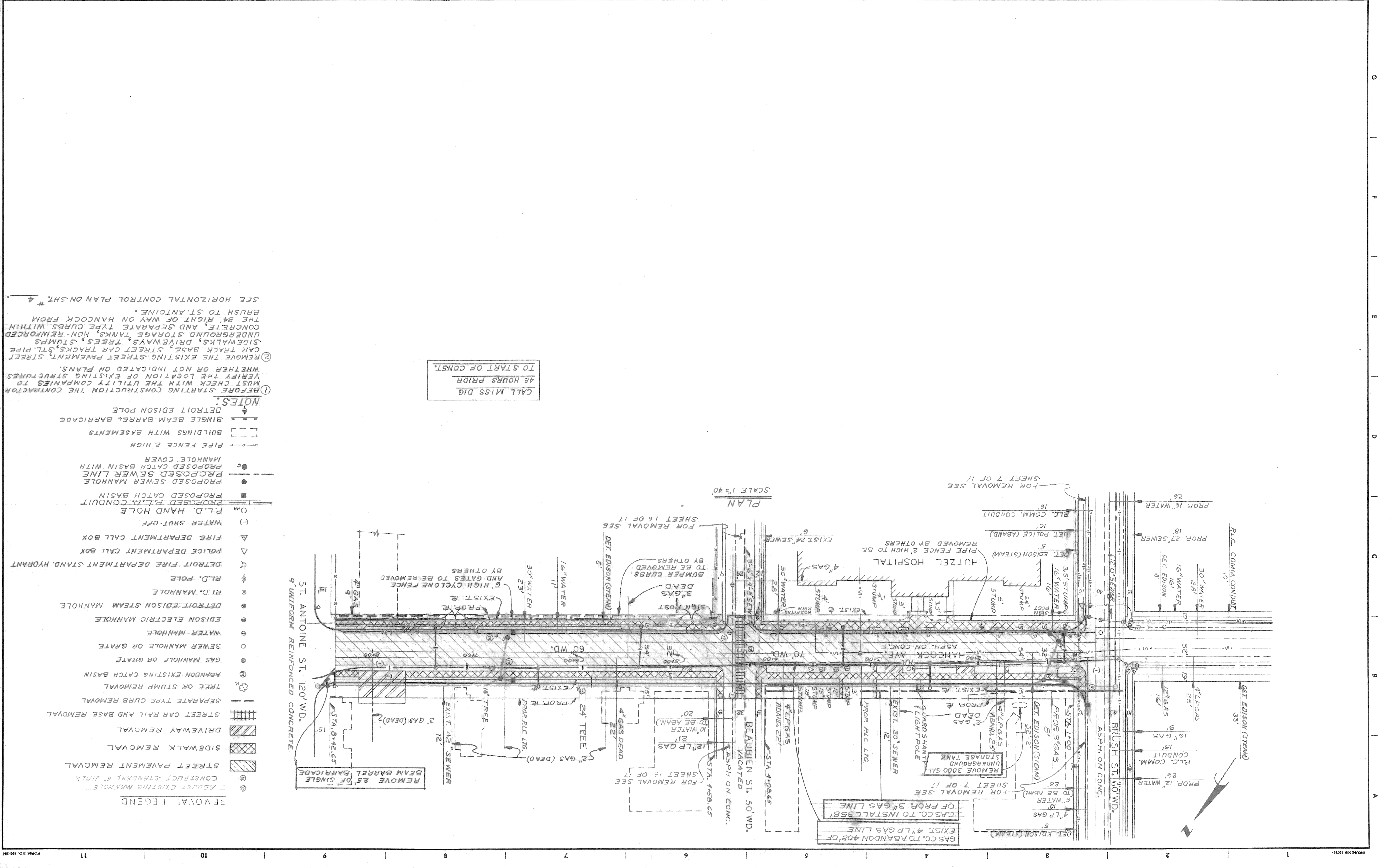
JOINT LEGEND

- B = LONGITUDINAL BULKHEAD CONSTRUCTION JOINT, ACCORDING TO STANDARD DETAIL DRAWING C-4943 DETAIL NO. 2.
- D = LONGITUDINAL LANE TIE JOINT, ACCORDING TO STANDARD DETAIL DRAWING C-4943 DETAIL NO. 1.

EARTHWORK LEGEND

- FILL (GRADE A)
- FILL (22 A)
- FILL - SELECTED EXCAVATED MATERIAL

REVISIONS LOCATED BY COORDINATES ON SHEET	DATE	NO.	DESCRIPTION
			GAS CO. TO INSTALL 3581 OF 4" GAS
			ABANDON 402 OF 4" GAS
			GAS CO. TO INSTALL 3581 OF 3" GAS
DESIGNED BY	APPROVED	ENGINEER OF STREETS	
DRAWN BY	JONES		
TRACED BY			
CHECKED BY			



NOTES:

- BEFORE STARTING CONSTRUCTION THE CONTRACTOR MUST CHECK WITH THE UTILITY COMPANIES TO VERIFY THE LOCATION OF EXISTING STRUCTURES WHETHER OR NOT INDICATED ON PLANS.
- REMOVE THE EXISTING STREET PAVEMENT, STREET CAR TRACK BASE, STREET CAR TRACKS, STL PIPE SIDEWALKS, DRIVEWAYS, TREES, STUMPS, UNDERGROUND STORAGE TANKS, NON-REINFORCED CONCRETE, AND SEPARATE TYPE CURBS WITHIN THE 84' RIGHT OF WAY ON HANCOCK FROM BRUSH TO ST. ANTOINE.

SEE HORIZONTAL CONTROL PLAN ON SHT. # 4

CALL MISS DIG
48 HOURS PRIOR
TO START OF CONST.

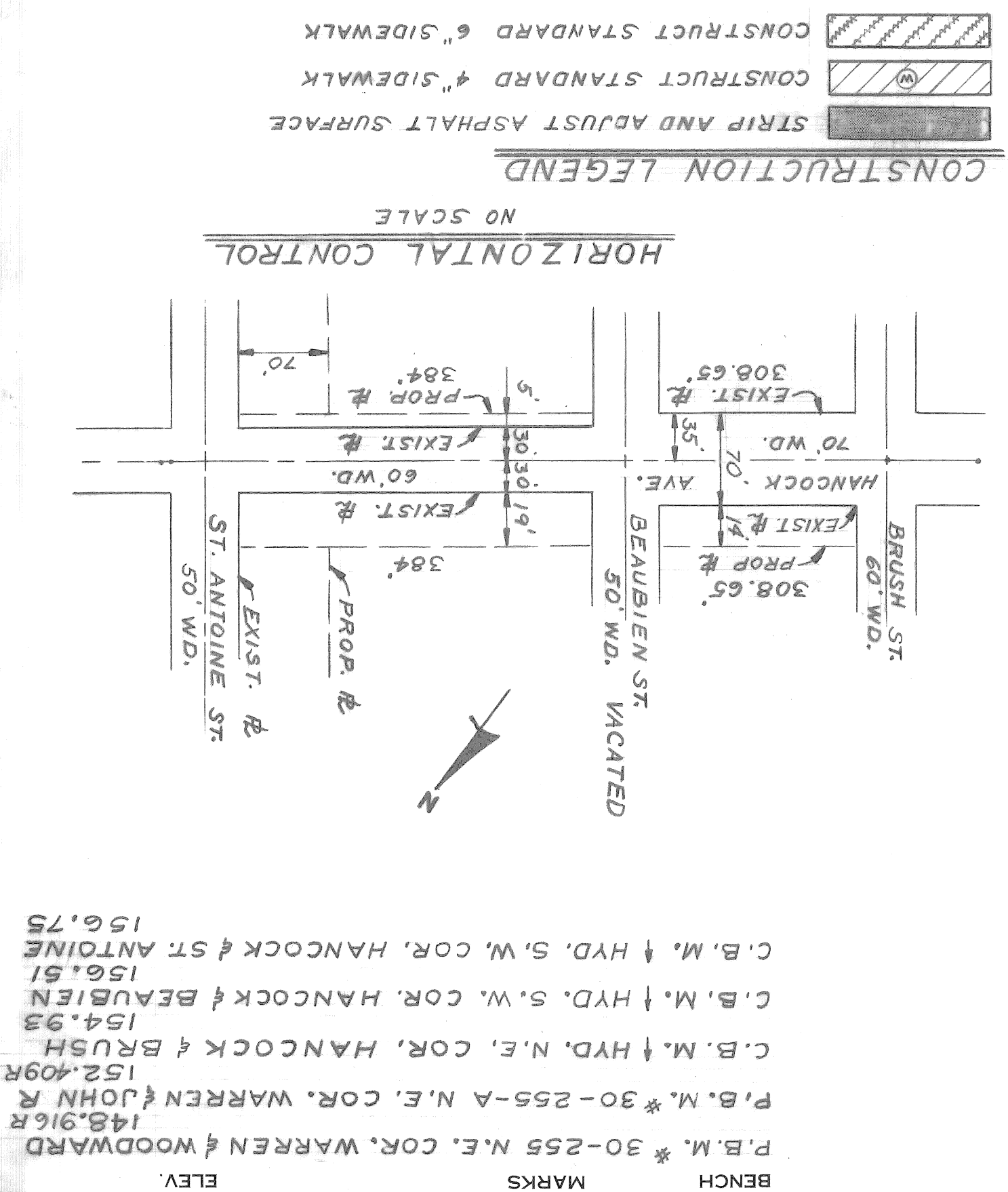
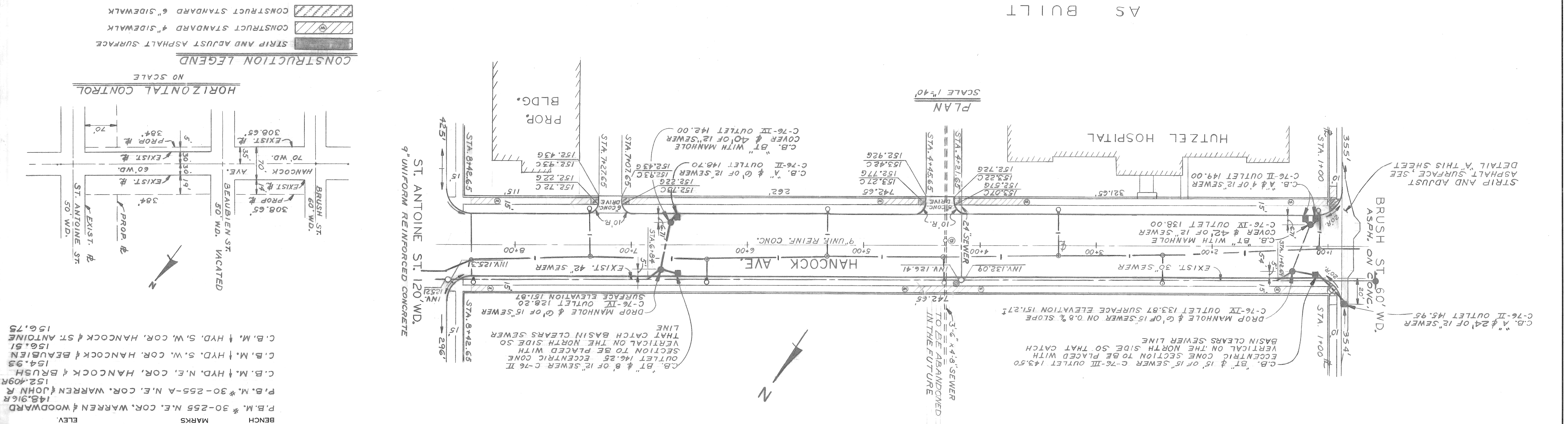
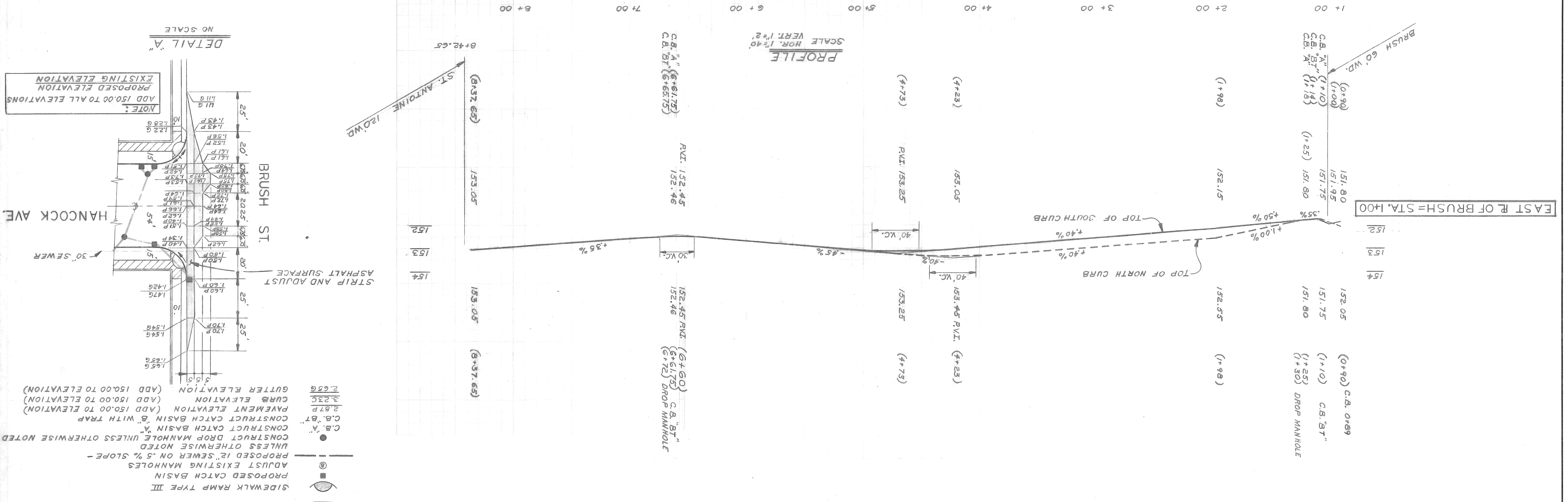
- REMOVAL LEGEND**
- ADJUST EXISTING MANHOLE
 - CONSTRUCT STANDARD 4" WALK
 - ▨ STREET PAVEMENT REMOVAL
 - ▨ SIDEWALK REMOVAL
 - ▨ DRIVEWAY REMOVAL
 - ▨ STREET CAR RAIL AND BASE REMOVAL
 - ▨ SEPARATE TYPE CURB REMOVAL
 - TREE OR STUMP REMOVAL
 - ABANDON EXISTING CATCH BASIN
 - GAS MANHOLE OR GRATE
 - SEWER MANHOLE OR GRATE
 - WATER MANHOLE
 - DETROIT EDISON STEAM MANHOLE
 - R.L.D. MANHOLE
 - R.L.D. POLE
 - DETROIT FIRE DEPARTMENT STAND. HYDRANT
 - △ POLICE DEPARTMENT CALL BOX
 - △ FIRE DEPARTMENT CALL BOX
 - (-) WATER SHUT-OFF
 - P.L.D. HAND HOLE
 - ▨ PROPOSED P.L.D. CONDUIT
 - ▨ PROPOSED CATCH BASIN
 - ▨ PROPOSED SEWER MANHOLE
 - ▨ PROPOSED SEWER LINE
 - ▨ PROPOSED CATCH BASIN WITH MANHOLE COVER
 - PIPE FENCE 2' HIGH
 - ▨ BUILDINGS WITH BASEMENTS
 - SINGLE BEAM BARREL BARRICADE
 - DETROIT EDISON POLE

Sewer Approved
C. DeWitt
4/10/74

REVISIONS		DESCRIPTION	DRN. OR D. APPROV. DATE

CITY OF DETROIT
CITY ENGINEERING DEPARTMENT
FOR
COMMUNITY AND ECONOMIC DEVELOPMENT DEPARTMENT

DATE 1-0-75	INDEXED	ASSIGNMENT NO. AO 2052A
CONTRACT NO. PW 6564	30	CONTRACT NO. PW 6564
SHEET 4 OF 17 SHEETS	6	FORM NO. 6



NOTE - FOR SYMBOLS (⊙) ETC. SEE STANDARD DETAIL DRAWING NO. C-113

SCALE
 HORIZONTAL 1"=40'
 VERTICAL 1"=2'

BOOK LL 30P
 LEVEL PG.
 DATE 1-10-72
 PAVING COMPLETED

CONTRACTOR
 BEFORE STARTING CONSTRUCTION
 MUST CHECK WITH UTILITIES FOR LOCATIONS OF EXISTING STRUCTURES WHETHER OR NOT INDICATED ON PLANS.

BENCH MARKS
 ELEV.
 P.B.M. * 30-255 N.E. COR. WARREN & WOODWARD 148.916R
 P.B.M. * 30-255-A N.E. COR. WARREN & JOHN R. 152.409R
 C.B.M. * HYD. N.E. COR. HANCOCK & BRUSH 154.93
 C.B.M. * HYD. S.W. COR. HANCOCK & BEAUBIEN 150.51
 C.B.M. * HYD. S.W. COR. HANCOCK & ST. ANTOINE 150.75

SHEET 5 OF 17 SHEETS

LEGEND

INSTALL CODE 009-00 STREET LIGHTING STANDARDS, 6 FT CLAMP-ON BRACKET ARM WITH 3'-0" RISE & 400W TYPE II MERCURY VAPOR LUMINAIRE ON NEW FOUNDATION

REMOVE FOUNDATION

EXISTING STREET LIGHT TO REMAIN

BUILD CONCRETE ENCASED CONDUIT NUMBER AND SIZE AS INDICATED

BUILD 1-3" CONCRETE ENCASED CONDUIT

BUILD HIGH TENSION MANHOLE (2-WAY)

BUILD ROUND HANDHOLE

BUILD 6" SEWER (LIGHTING)

EXISTING MANHOLE OR HANDHOLE AS INDICATED

INSTALL UNDERGROUND CABLE, NO. AND SIZE AS INDICATED

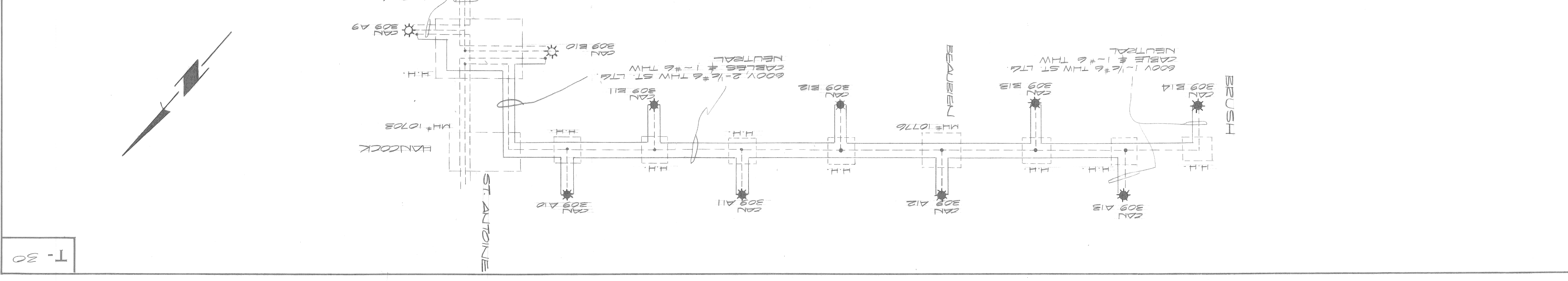
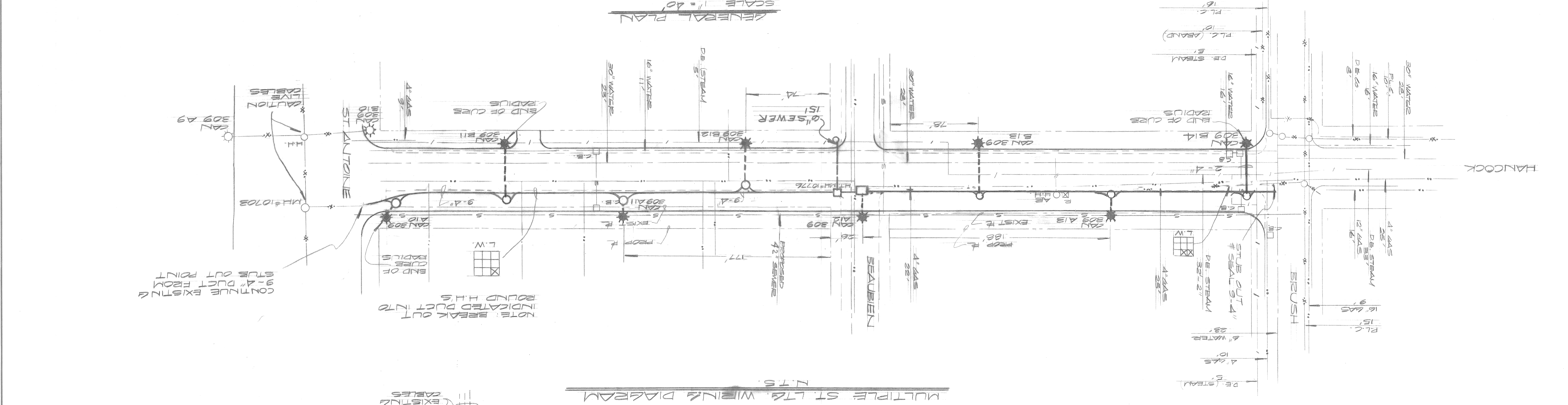
MANHOLE OR HANDHOLE AS INDICATED

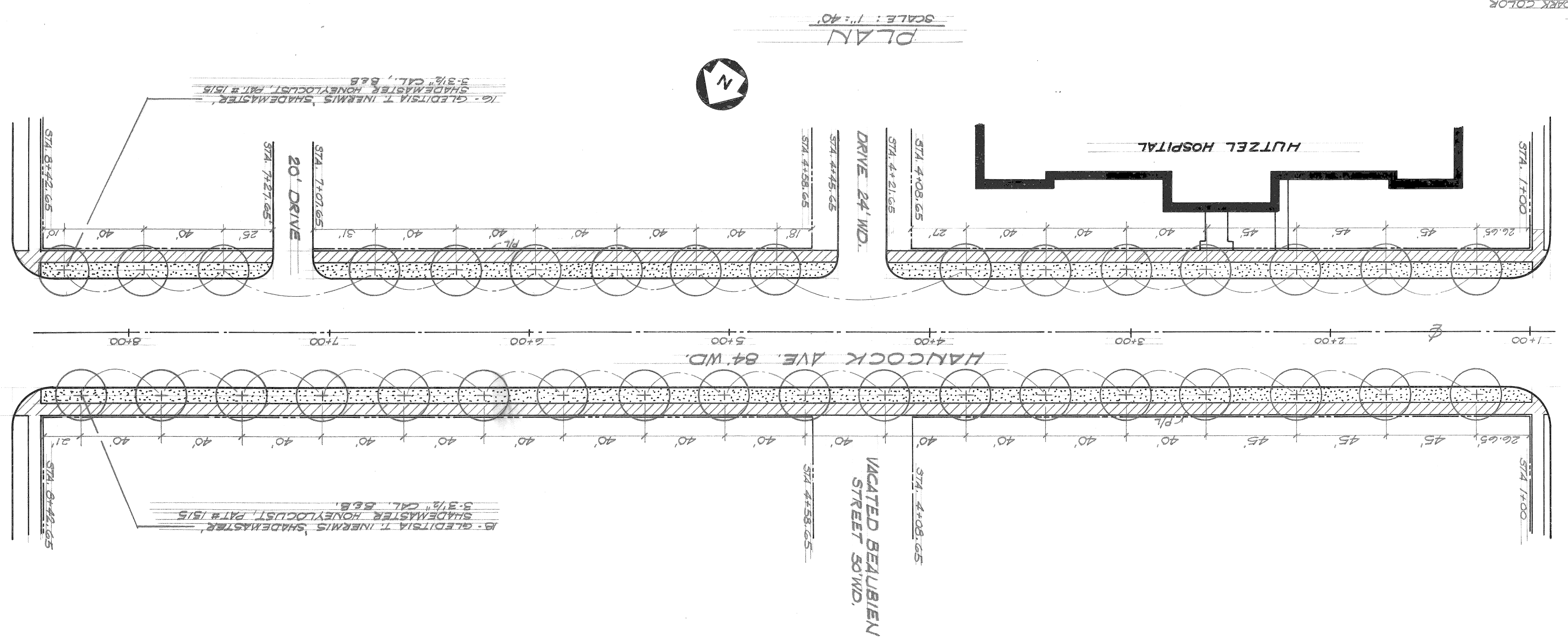
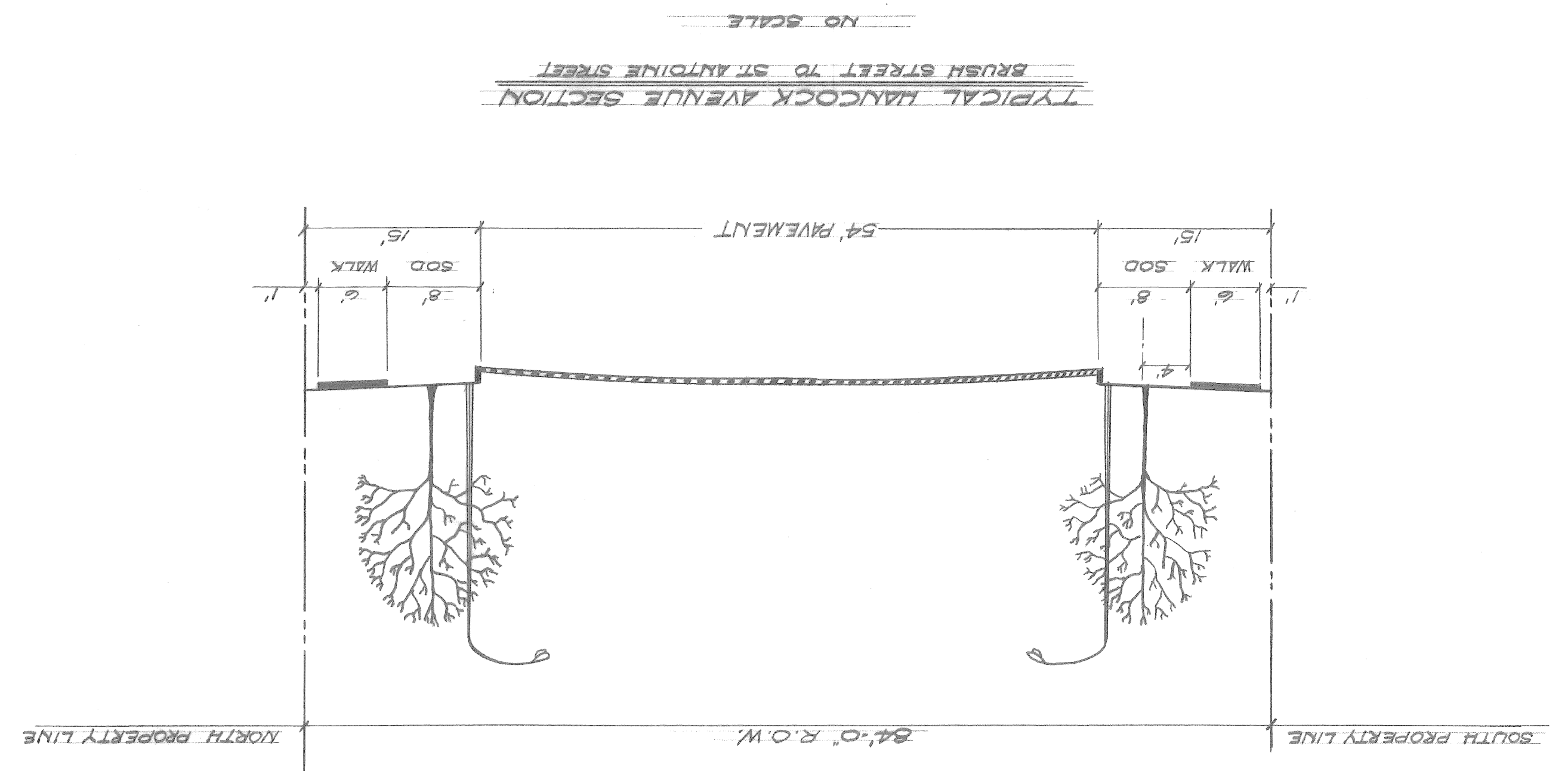
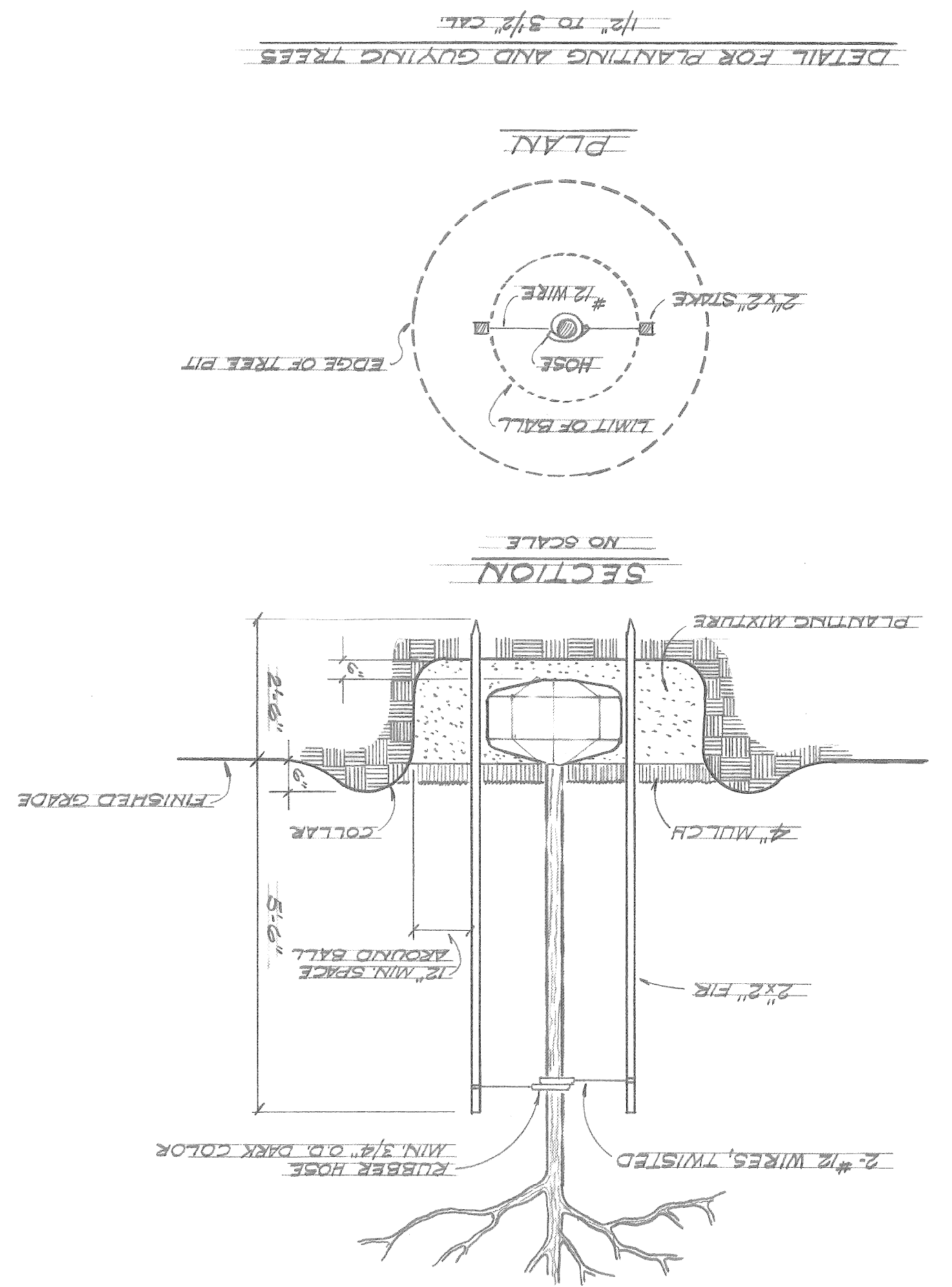
ABANDON HANDHOLE

BILL OF MATERIALS

ITEM	QUANTITY	UNIT
9-4" CONCRETE ENCASED CONDUIT	182	LN. FT.
1-3" CONCRETE ENCASED CONDUIT	1	LN. FT.
2-WAY HIGH TENSION MANHOLE	7	EACH
ROUND HANDHOLE	15	LN. FT.
6" SEWER (LIGHTING)	1	EACH
REMOVE POB FOUNDATION	1	EACH
ABANDON HANDHOLE	1	EACH
2-4" CONCRETE ENCASED CONDUIT	35	LN. FT.
CODE 009-00 STREET LIGHTING STANDARD ON NEW FOUNDATION (FDN. ONLY)	8	EACH
600V 1-1/2" #6 THW ST. LTR. CABLE #	180	LN. FT.
600V 2-1/2" #6 THW ST. LTR. CABLE #	970	LN. FT.

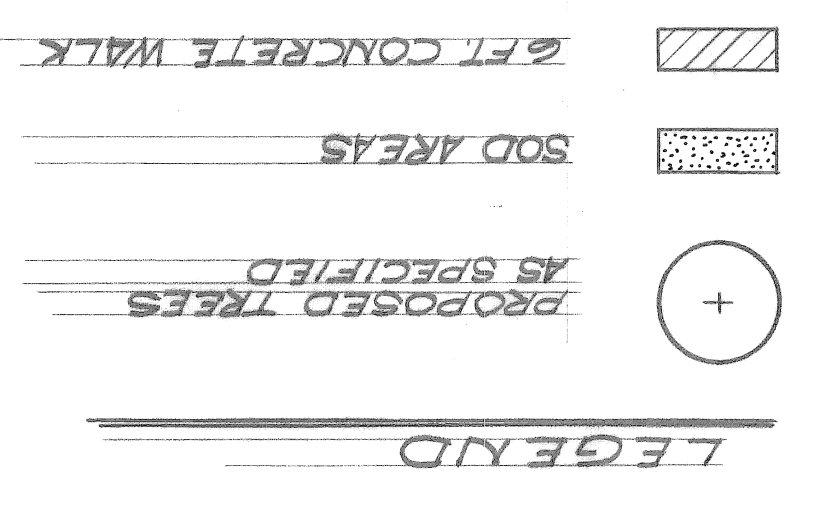
- NOTES**
1. P.L.R. WILL FURNISH CODE 009-00 STDS. 6 FT. CLAMP-ON BRACKET ARMS WITH 3'-0" RISE AND 400W TYPE II MERCURY VAPOR LUMINAIRE. CONTRACTOR IS TO INSTALL STDS AND MAKE ALL WIRING CONNECTIONS.
 2. NOTIFY P.L.D. SYSTEM OPERATOR 961-1860 IN ADVANCE OF MAKING CONNECTIONS TO EXISTING CIRCUITS.
 3. ALL CABLES SHALL BE TAGGED IN ALL MANHOLES & HANDHOLES.
 4. ALL U.G. FED ST. LTR. STDS ARE TO BE STENCILED AS PER PLANS. STENCILING OF U.G. - FED ST. LTR. STDS IS INCIDENTAL TO INSTALLATION. TYPICAL STENCIL SHOWN BELOW.





MATERIALS LIST

QUANTITY	DESCRIPTION
34 EA.	GLEDTISIA T. INERMIS, SHADEMASTER
	SHADEMASTER HONEYLOCUST, PATR 1515
	3-3 1/2\"/>



GENERAL NOTES:

THE 6 FT. WIDE AREA BETWEEN THE CURB AND SIDEWALK SHALL RECEIVE A MINIMUM OF 4 1/2\"/>

1/1/35
Sewer Approved
P. Dwyer

NO. 11	NO. 10	NO. 9	NO. 8	NO. 7	NO. 6	NO. 5	NO. 4	NO. 3	NO. 2	NO. 1	
DATE 1-6-75	ASSIGNMENT NO. AO 2052D	CONTRACT NO. PW 6564	CITY OF DETROIT FOR COMMUNITY AND ECONOMIC DEVELOPMENT DEPARTMENT			CITY ENGINEERING DEPARTMENT			DESIGNED BY Kingfield Morris III	DRAWN BY R. Rosik	CHECKED BY [Signature]
CURB AND SIDEWALK REPLACEMENT ON BRUSH FROM CANFIELD TO WARREN PROJECT NO. 3 MICH R-112			CURB AND SIDEWALK REPLACEMENT			APPROVED: [Signature]			REVISIONS LOCATED BY COORDINATES ON SHEET		
SHEET 7 OF 17 SHEETS			SHEET 7 OF 17 SHEETS			ENGINEER OF STREETS [Signature]			DESCRIPTION		

BEFORE STARTING CONSTRUCTION THE CONTRACTOR MUST CHECK WITH THE UTILITY COMPANIES TO VERIFY THE LOCATION OF EXISTING STRUCTURES WHETHER OR NO INDICATED ON PLANS. [CALL MISS DIG.]
AT 1 REMOVE AND REPLACE EXISTING DRIVEWAY.
CONSTRUCT INTEGRAL CURB AND SIDEWALK AND 4" SIDEWALK ON BRUSH FROM CANFIELD TO WARREN IN THIS CONTRACT AS SHOWN ON THE TYPICAL SECTION.
CALL DEPT OF TRANS-PORTION BEFORE REMOVING PARKING METERS ON BRUSH BETWEEN FOREST AND HANCOCK.
REMOVE AND REPLACE ALL EXISTING CURBS, SIDEWALKS, AND DRIVEWAYS ON BOTH SIDES OF BRUSH FROM THE NORTH CURB LINE OF CANFIELD TO THE PROPOSED SOUTH PROPERTY LINE OF WARREN UNLESS OTHERWISE NOTED ON THE DRAWING.

NOTES:

- PROPOSED CATCH BASIN
- ⊕ CONSTRUCT STANDARD 4" SIDEWALK
- ◆ DETROIT EDISON POLE
- PARKING METER
- + TRAFFIC SIGN POST
- R.L.C. LIGHT POLE
- ⊙ TRAFFIC SIGNAL ON LIGHT POST
- ⊙ TRAFFIC SIGNAL LIGHT
- ⊙ GAS DRIP
- (-) WATER SHUT-OFF
- △ FIRE DEPARTMENT CALL BOX
- ▽ POLICE DEPARTMENT CALL BOX
- ⊙ DETROIT FIRE DEPARTMENT STANDARD HYDRANT
- ⊙ R.L.C. MANHOLE
- ⊙ EDISON ELECTRIC MANHOLE
- ⊙ SEWER MANHOLE
- ⊙ GAS MANHOLE OR GRATE
- ⊙ SIDEWALK RAMP TYPE III
- ⊙ SIDEWALK RAMP TYPE I
- ▨ STREET PAVEMENT REMOVAL UNREINFORCED
- ▨ CONSTRUCT 6" STANDARD DRIVEWAY EXCEPT AS SHOWN
- ▨ CONSTRUCT 6" STANDARD SIDEWALK
- ▨ DRIVEWAY REMOVAL
- ▨ SIDEWALK REMOVAL

LEGEND

