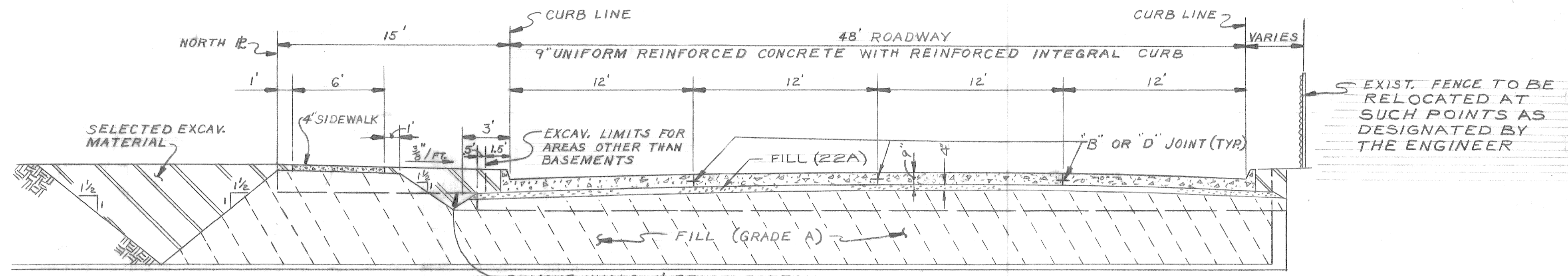
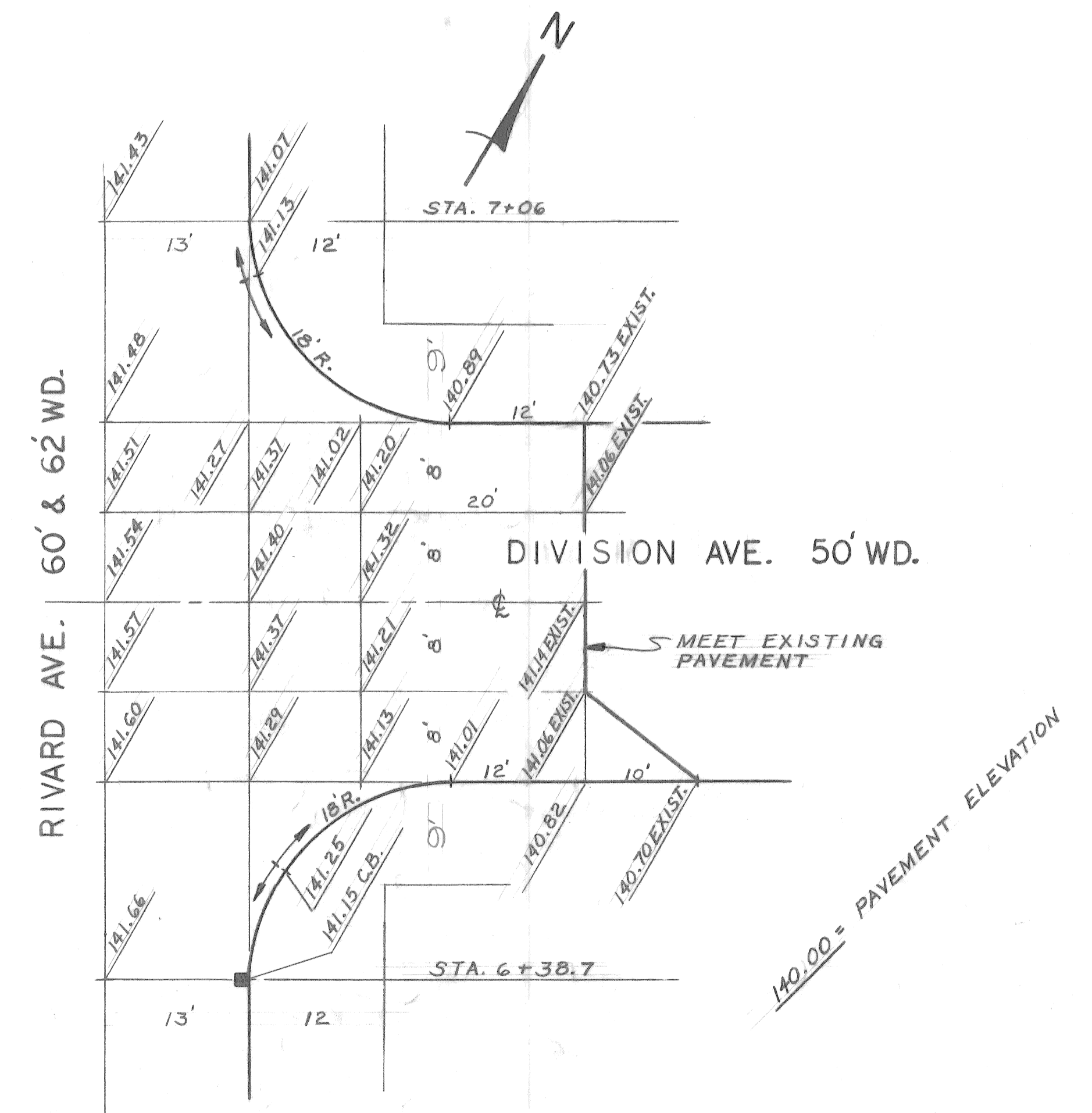
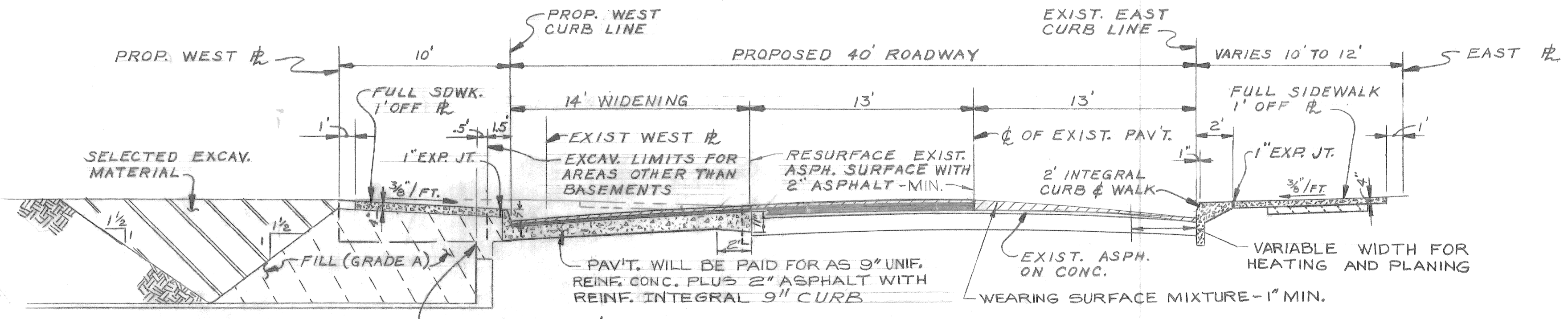


- EARTHWORK LEGEND**
- FILL (GRADE A)
 - FILL (22 A)
 - FILL SELECTED EXCAVATED MATERIAL
- JOINT LEGEND**
- "B" LONGITUDINAL BULKHEAD CONSTRUCTION JOINT- ACCORDING TO STANDARD DETAIL DRAWING C-4943 DETAIL No. 2
 - "D" LONGITUDINAL LANE TIE JOINT- ACCORDING TO STANDARD DETAIL DRAWING C-4943 DETAIL No. 1



TYPICAL PAVEMENT AND BACKFILL SECTION OF CHRYSLER EAST SERVICE DRIVE
 STA. 1+20 TO STA. 6+46.80
 NO SCALE



TYPICAL PAVEMENT AND BACKFILL SECTION OF RIVARD
 NO SCALE

INTERSECTIONS RESURFACING DETAILS
 SCALE 1"=10'

DESIGNED BY	<i>R. Rosik</i>	APPROVED:	<i>M. J. ...</i> ENGINEER OF STREETS
DRAWN BY	<i>R. Rosik</i>		
TRACED BY	<i>R. Rosik</i>		
CHECKED BY	<i>R. Rosik</i>		

CITY OF DETROIT
 CITY ENGINEERING DEPARTMENT
 FOR
 COMMUNITY AND ECONOMIC DEVELOPMENT DEPARTMENT

PAVING OF CHRYSLER EAST SERVICE DRIVE FROM ADELAIDE TO RIVARD
 WIDENING OF RIVARD FROM FISHER SERVICE DRIVE TO WATSON
 WHOLESALE DISTRIBUTION CENTER NO. 1 MICH. R-86
 TYPICAL SECTION AND DETAIL SHEET

SHEET	3	OF	48	SHEETS
CONTRACT	No. PW 6563			
ASSIGNMENT	No. 1840(C)&(D)			
DATE	3-3-75			

REMOVAL LEGEND

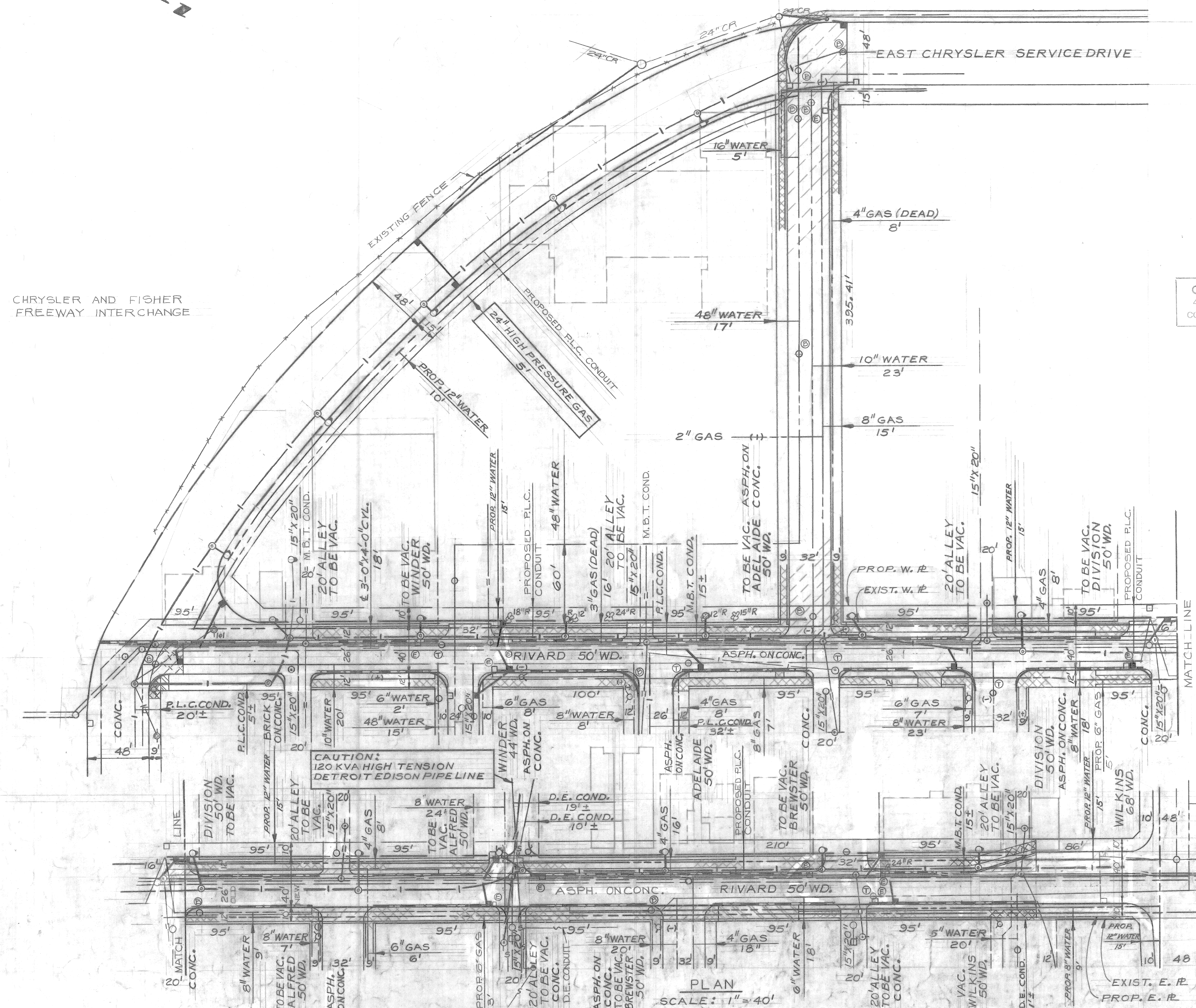
- BUILDING WITH BASEMENTS
- BUILDING WITH FOUNDATION
- DRIVEWAY REMOVAL
- STREET PAVEMENT REMOVAL (UNREINFORCED)
- ALLEY PAVEMENT REMOVAL
- SIDEWALK REMOVAL
- SEPARATE TYPE CURB REMOVAL
- ABANDON EXISTING CATCH BASINS
- RESET EXISTING MANHOLES AND HANDHOLES
- ADJUST EXISTING MANHOLES AND HANDHOLES
- TREE AND STUMP REMOVAL
- STREET PAVEMENT REMOVAL (REINFORCED)

CALL MISS DIG
48 HOURS PRIOR TO
CONSTRUCTION 647-7344

GENERAL NOTE:
BEFORE STARTING CONSTRUCTION — CONTRACTOR MUST CHECK
WITH UTILITIES FOR LOCATION OF EXISTING STRUCTURES
WHETHER OR NOT INDICATED ON PLANS

NOTES:
1. FOR UTILITY LEGEND SEE STD. DRWG. C-902-A
2. FOR DETAILED QUANTITIES SEE SHEET #10
3. ALL CATCH BASIN ABANDONMENTS IN RIVARD
ARE TO BE AS LISTED IN THE PROPOSAL 'CATCH
BASIN - SPECIAL ABANDONMENT.'

CHRYSLER AND FISHER
FREEWAY INTERCHANGE



PLAN
SCALE: 1" = 40'

NO.	DESCRIPTION	DATE
1	PROP. 6" GAS LINE ON WATSON ADDED	2/11/75
2	LOCATION OF 50' DRIVE ON RIVARD AT WATSON ADDED	2/11/75
3	SYMBOL FOR REINF. PAV'T. REM'L. ADDED	2/11/75
4	D.E. CONDUIT ADDED	2/11/75

DESIGNED BY	J.C.U.
DRAWN BY	J.C.U.
TRACED BY	
CHECKED BY	J.C.U.

APPROVED:
Wm. J. Harris
ENGINEER OF STREETS

CITY OF DETROIT
CITY ENGINEERING DEPARTMENT
FOR
COMMUNITY AND ECONOMIC DEVELOPMENT DEPARTMENT

MISCELLANEOUS CONSTRUCTION
WHOLESALE DISTRIBUTION CENTER NO. 1 MICH. R-86
REMOVAL AND UTILITY PLAN

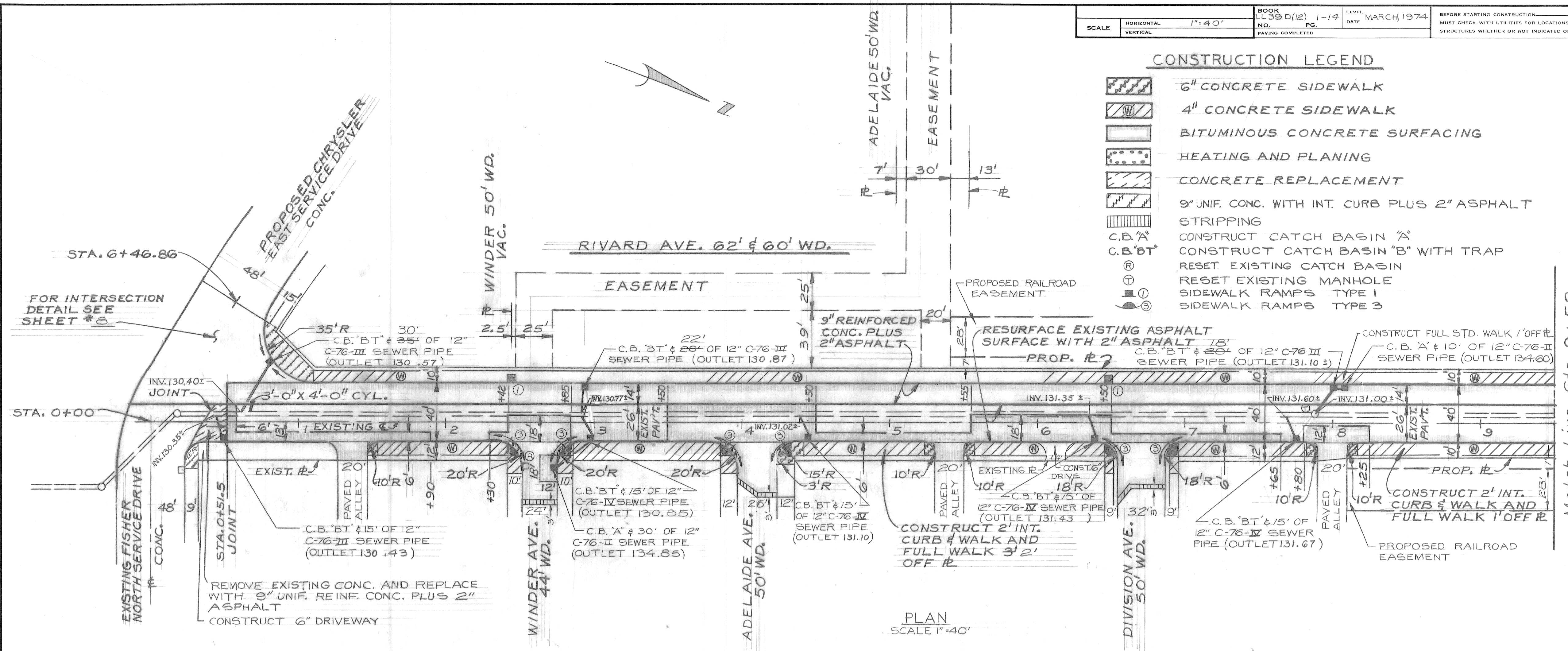
SHEET 4 OF 48 SHEETS
CONTRACT NO. PW 6563
ASSIGNMENT NO. 1840(C)&(D)
DATE 3-3-75

CONSTRUCTION LEGEND

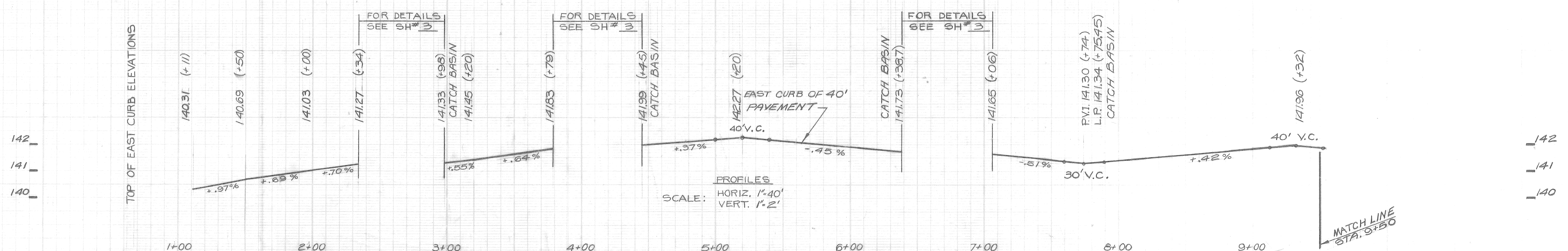
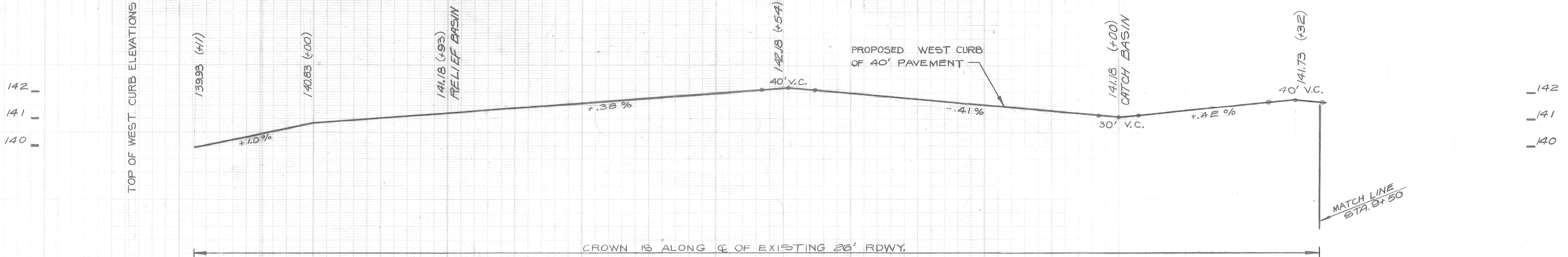
- 6" CONCRETE SIDEWALK
- 4" CONCRETE SIDEWALK
- BITUMINOUS CONCRETE SURFACING
- HEATING AND PLANING
- CONCRETE REPLACEMENT
- 9" UNIF. CONC. WITH INT. CURB PLUS 2" ASPHALT STRIPPING
- C.B. 'A' CONSTRUCT CATCH BASIN 'A'
- C.B. 'B' CONSTRUCT CATCH BASIN 'B' WITH TRAP
- RESET EXISTING MANHOLE
- RESET EXISTING MANHOLE SIDEWALK RAMP TYPE 1
- SIDEWALK RAMP TYPE 3

BENCH MARKS	ELEV.
P.B.M. #39-251A N.W. COR WILKINS & RIVARD	140.80 REC.
C.B.M. # HYD. N.E. COR. FISHER & RIVARD	142.54
C.B.M. # HYD. 20' N. N. R. WINDER & RIVARD	144.42
C.B.M. # HYD. N.W. COR. ADELAIDE & RIVARD	144.91
C.B.M. # HYD. S.E. COR. ALFRED & RIVARD	144.45
C.B.M. # HYD. S.E. COR. BREWSTER & RIVARD	144.36
C.B.M. # HYD. N.W. COR. WATSON & RIVARD	144.65

NOTES:
1. FOR HORIZONTAL CONTROL SEE ALIGNMENT SHEET # 2



PLAN SCALE 1"=40'



PROFILES SCALE: HORIZ. 1"=40' VERT. 1"=2'

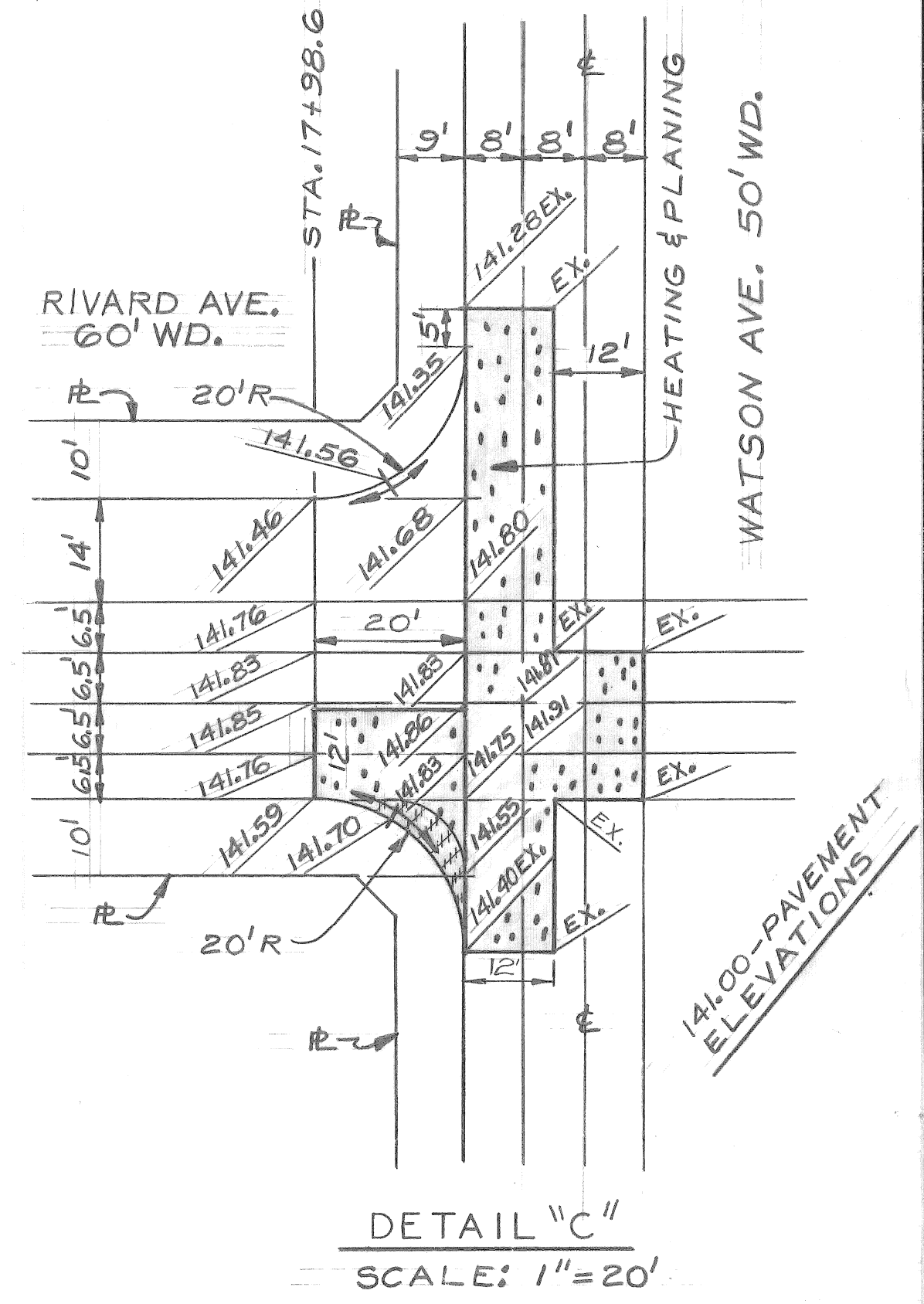
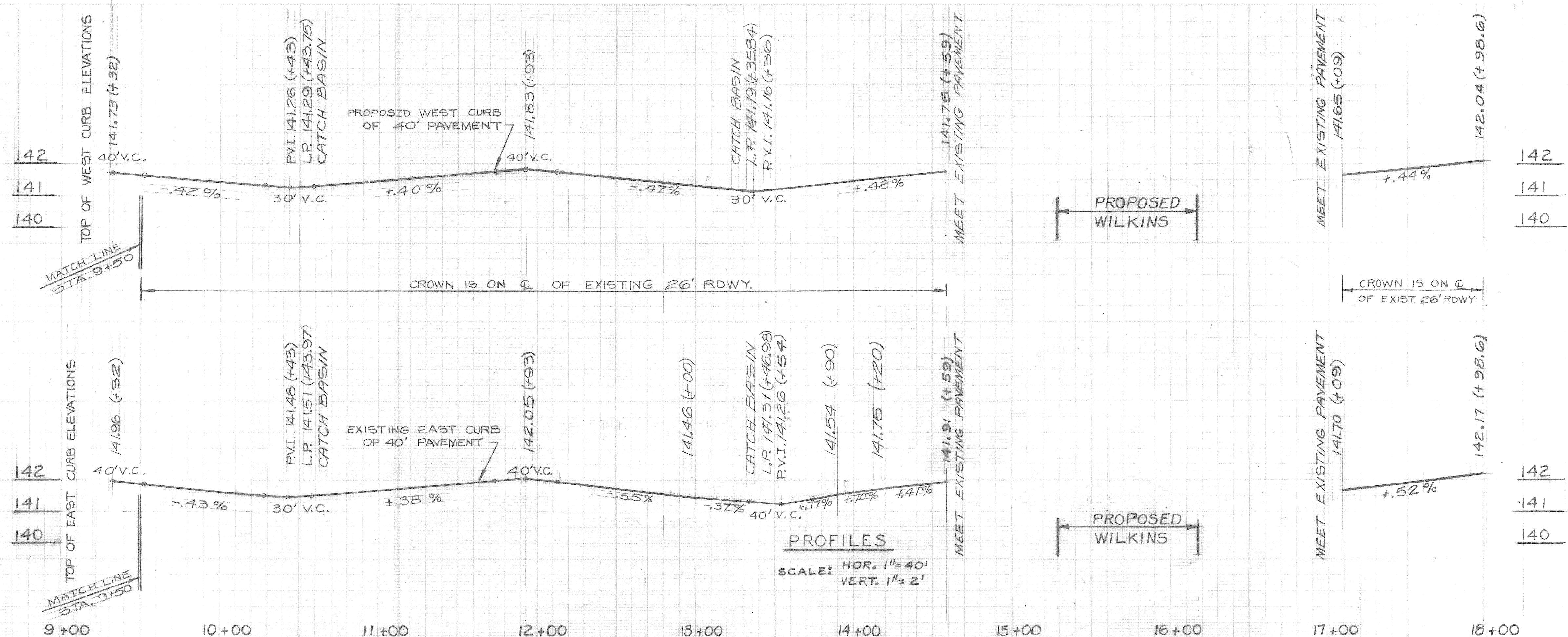
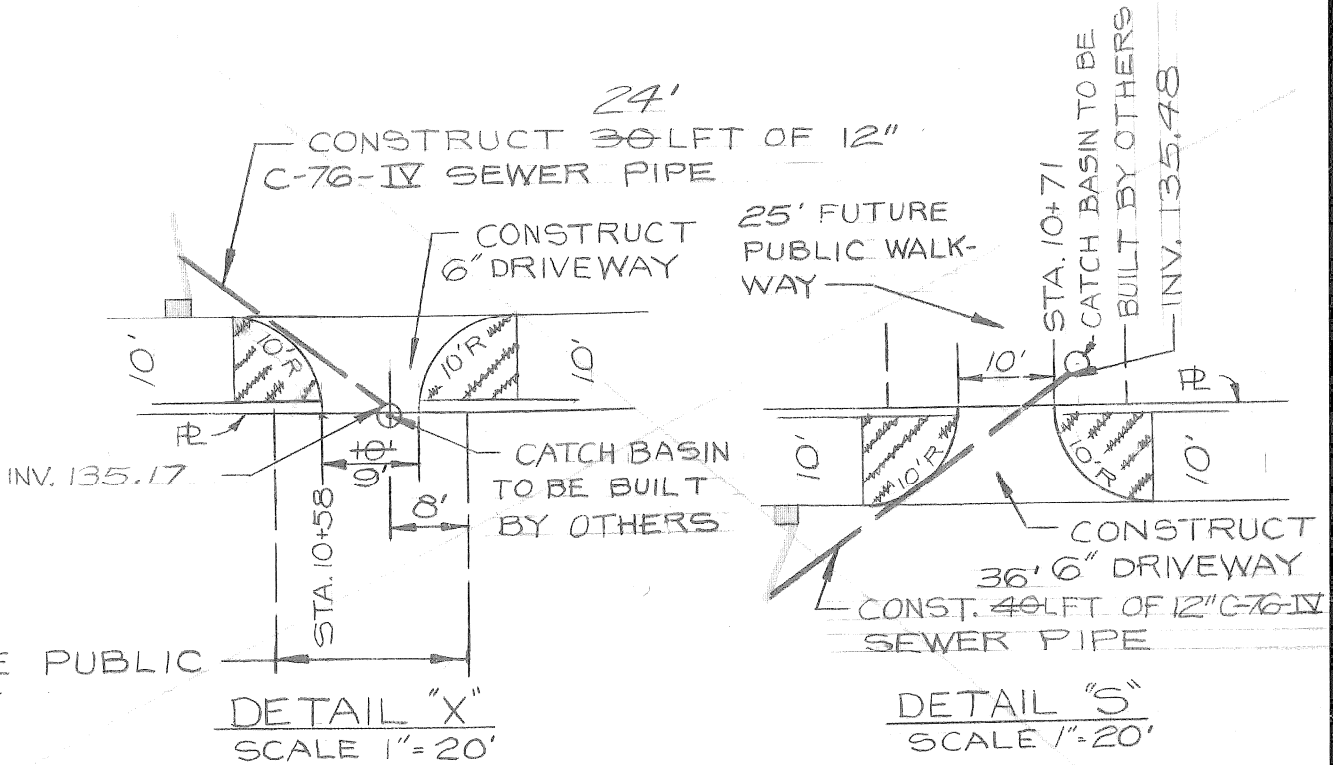
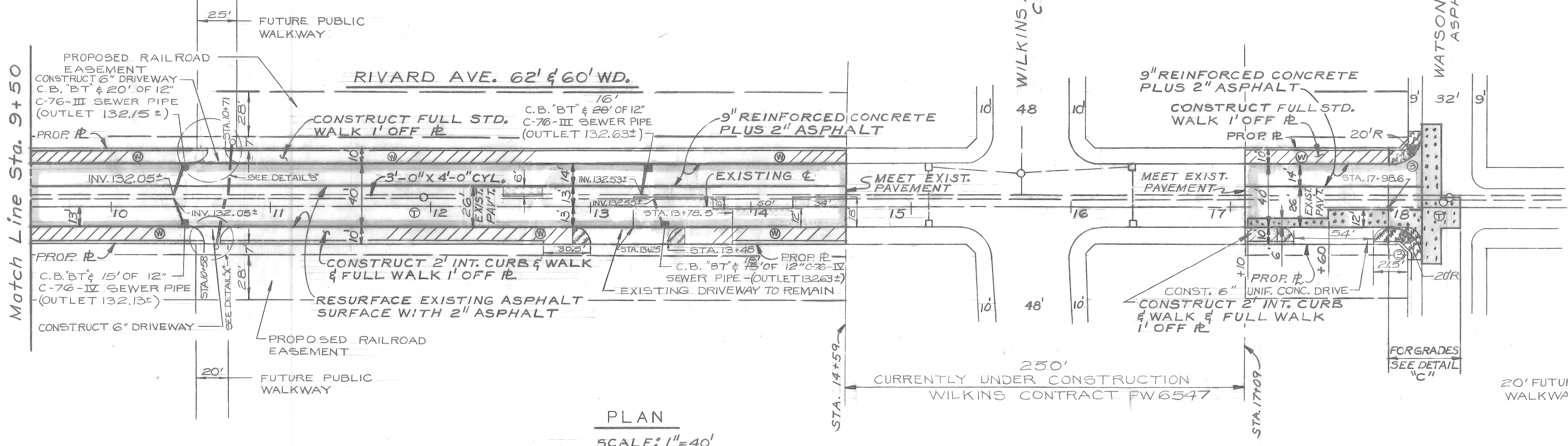
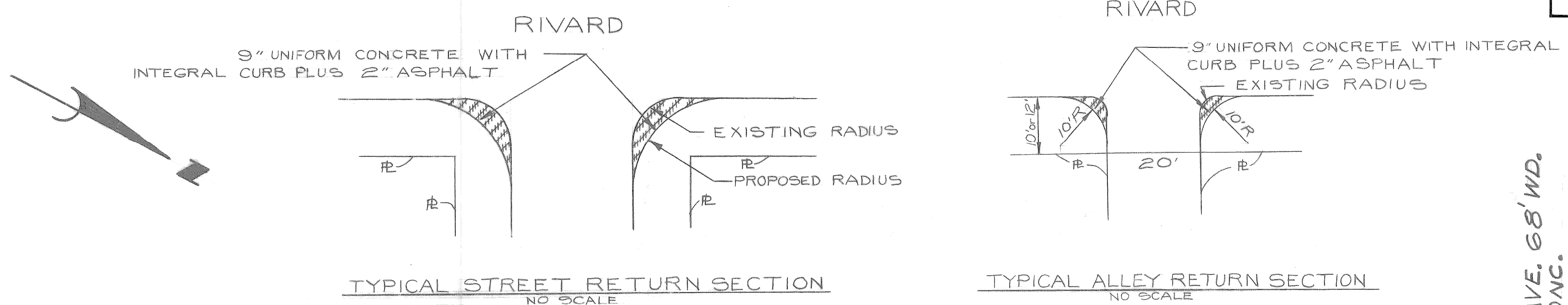
2/6/75 Sewer Approved

<p>BY: <i>D.E.U.</i> CHECKED BY: <i>Taim Khan</i> APPROVED: <i>Taim Khan</i> ENGINEER OF STREETS</p>		<p>CITY OF DETROIT CITY ENGINEERING DEPARTMENT FOR COMMUNITY AND ECONOMIC DEVELOPMENT DEPARTMENT</p>	<p>WIDENING OF RIVARD FROM FISHER SERVICE DRIVE TO WATSON WHOLESALE DISTRIBUTION CENTER NO. 1 MICH. R-86</p>	<p>INDEX NO. 4 TOP NO. 39 ASSIGNMENT NO. 1840 (D) DATE 3-3-75</p>
<p>PLAN</p>	<p>GRADE</p>			
<p>AS BUILT</p>		<p>REVISIONS</p>		<p>PLAN AND PROFILE</p>

NOTE - FOR SYMBOLS (A) ETC. SEE STANDARD DETAIL DRAWING NO. C-4175

BENCH MARKS ELEV.
 P.B.M. * 39-251A N.W. COR. WILKINS & RIVARD 140.80 REC.
 C.B.M. * HYD. S.E. COR BREWSTER & RIVARD 144.36
 C.B.M. * HYD. N.W. COR. WATSON & RIVARD 144.65

NOTES:
 1. FOR HORIZONTAL CONTROL SEE ALIGNMENT SHEET # 2
 2. FOR CONSTRUCTION LEGEND SEE SHEET # 5



216175
 Sewer Approved
 C.D. [Signature]

BY: <i>D.E.U.</i> CHECKED BY: <i>D.E.U.</i> APPROVED: <i>Naim J. Kawara</i> ENGINEER OF STREETS		CITY OF DETROIT CITY ENGINEERING DEPARTMENT FOR COMMUNITY AND ECONOMIC DEVELOPMENT DEPARTMENT		WIDENING OF RIVARD FROM FISHER SERVICE DRIVE TO WATSON WHOLESALE DISTRIBUTION CENTER NO. 1 MICH. R-86		INDEX NO. 4 SHEET 6 OF 48 SHEETS
PLAN		ESTIMATE		ASSIGNMENT NO. 1840 (D)		CONTRACT NO. PW 6563
REVISIONS		FINAL		PLAN AND PROFILE		DATE 3-3-75

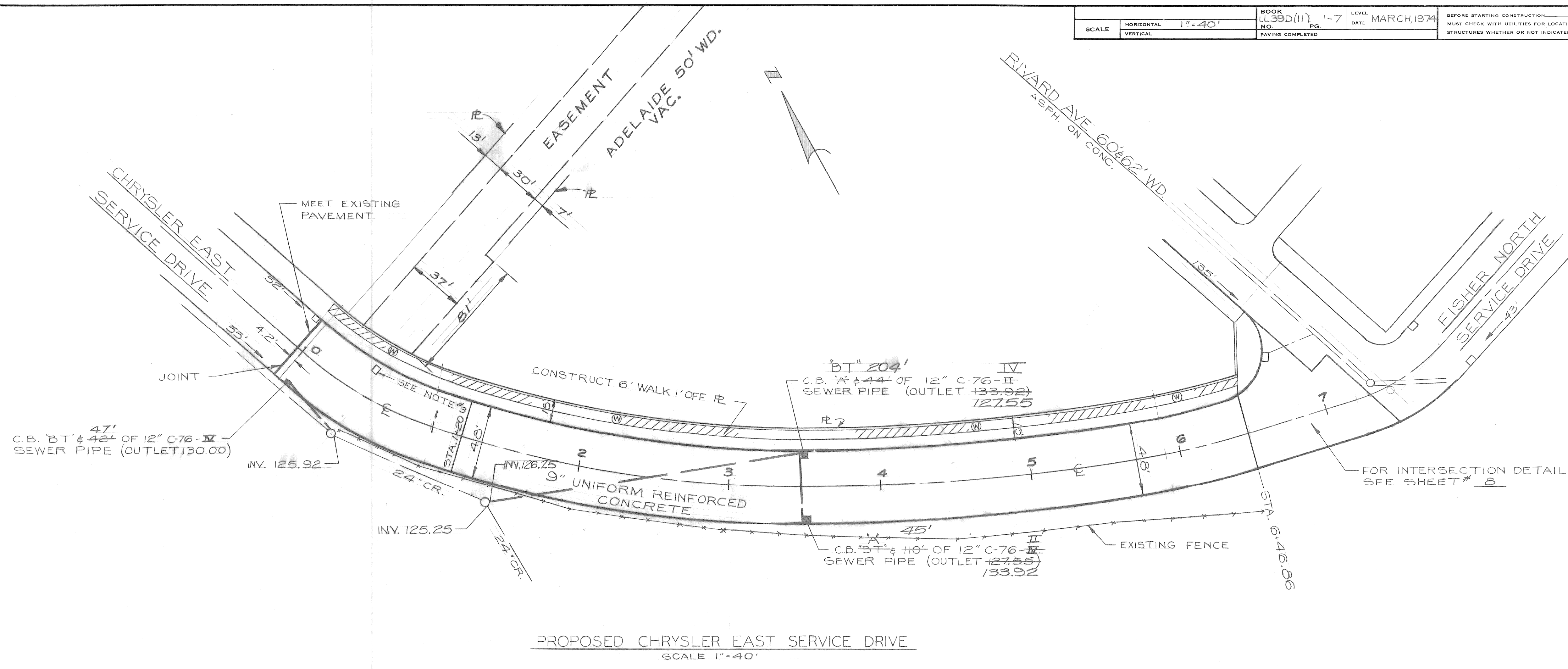
SCALE	HORIZONTAL 1"=40'	BOOK 1-39D(11)	LEVEL DATE MARCH, 1974
	VERTICAL	NO. 1-7	PG. 1-7

BEFORE STARTING CONSTRUCTION CONTRACTOR MUST CHECK WITH UTILITIES FOR LOCATIONS OF EXISTING STRUCTURES WHETHER OR NOT INDICATED ON PLANS.

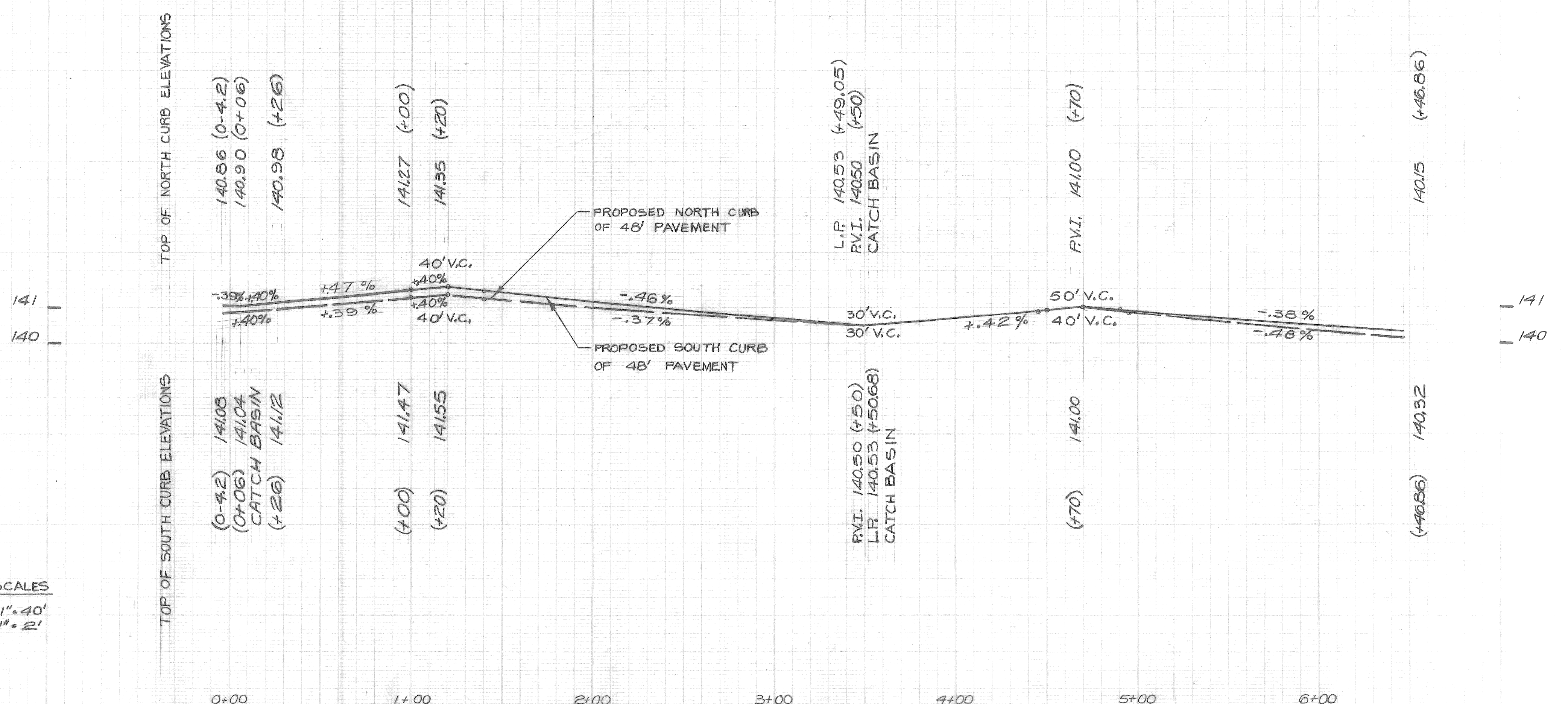
NOTE - FOR SYMBOLS (A) ETC. SEE STANDARD DETAIL DRAWING NO. C-473

BENCH MARKS	ELEV.
P. D. M. #39-251A N.W. COR. WILKINS & RIVARD	140.80R
C. B. M. #HYD. N.W. COR. RIVARD & WATSON	144.63
C. B. M. #R.R. SPK. IN POLE 100' N. OF WILKINS 20' E. OF CHRYSLER	143.95
C. B. M. #HYD. 5/8 CHRYSLER 250' S. OF WILKINS	143.53
C. B. M. #HYD. 1/2 ADELAIDE 60' E. OF CHRYSLER	144.15
C. B. M. #CROSS IN FWAY SIGN BASE (OVERHEAD)	139.17
C. B. M. #HYD. 1/2 COR. FISHER & RIVARD	142.54
C. B. M. #HYD. 20' N. N.E. WINDER, E. OF RIVARD	144.42
C. B. M. #HYD. N.W. COR. ADELAIDE & RIVARD	144.91

- NOTES:
- FOR HORIZONTAL CONTROL SEE ALIGNMENT SHEET # 2
 - FOR CONSTRUCTION LEGEND SEE SHEET # 5
 - ADJUST EXISTING CATCH BASIN AND REPLACE CATCH BASIN FRAME & COVER WITH STD. MANHOLE FRAME & COVER (MANHOLE FRAME & COVER INCIDENTAL TO ADJUSTMENT)



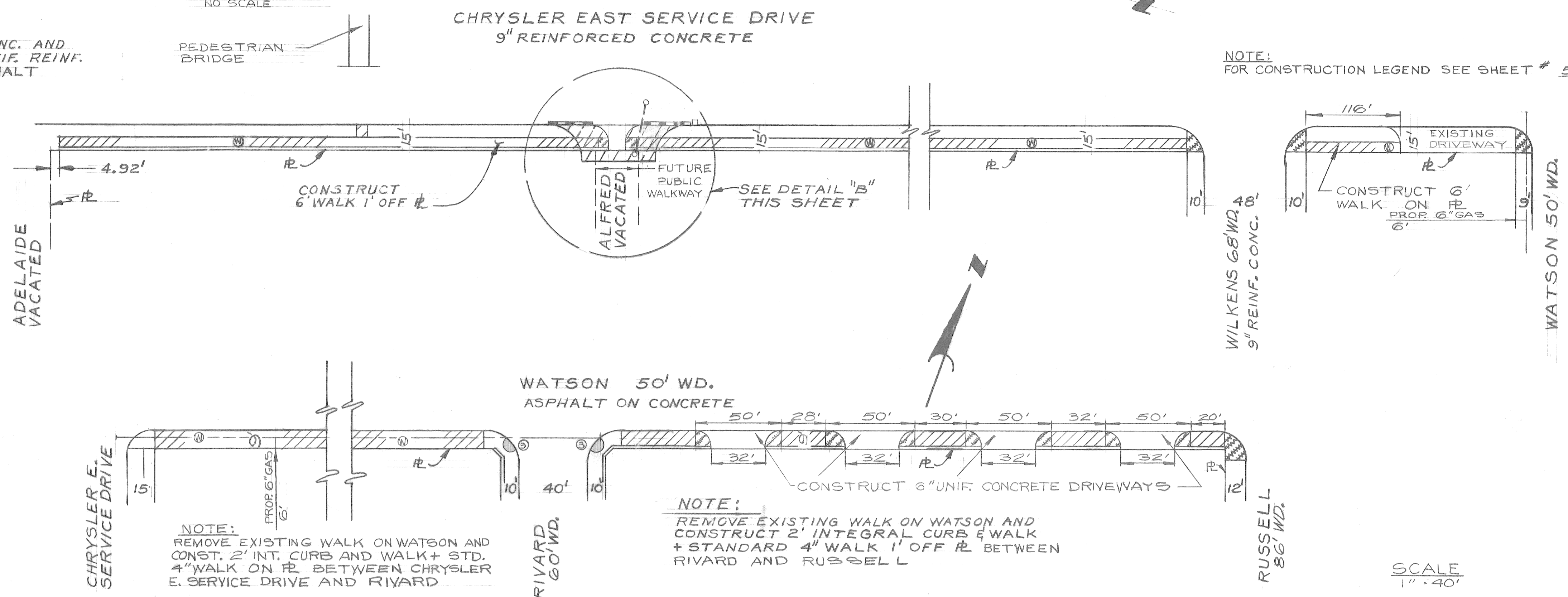
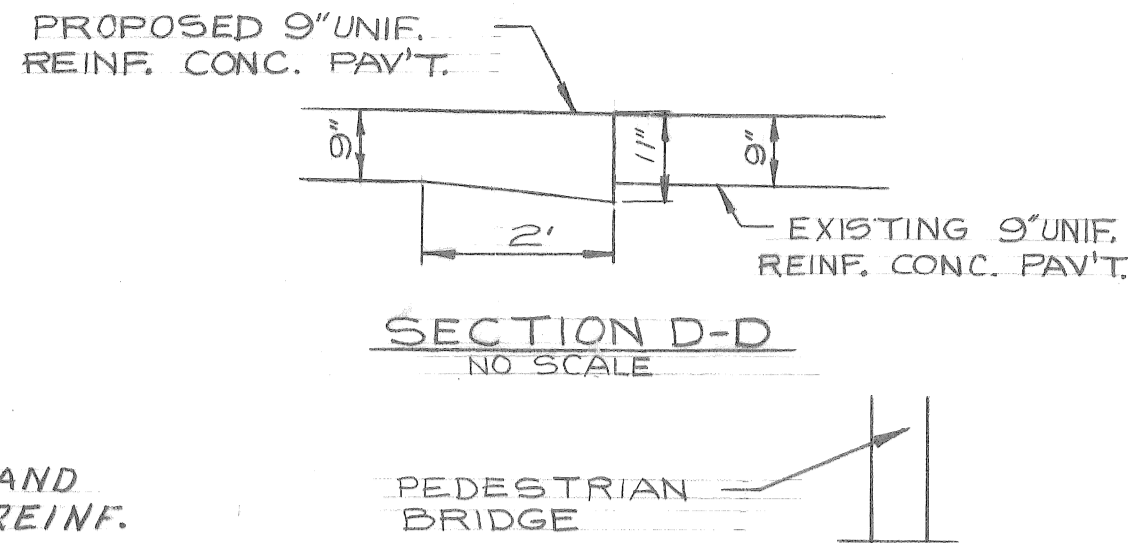
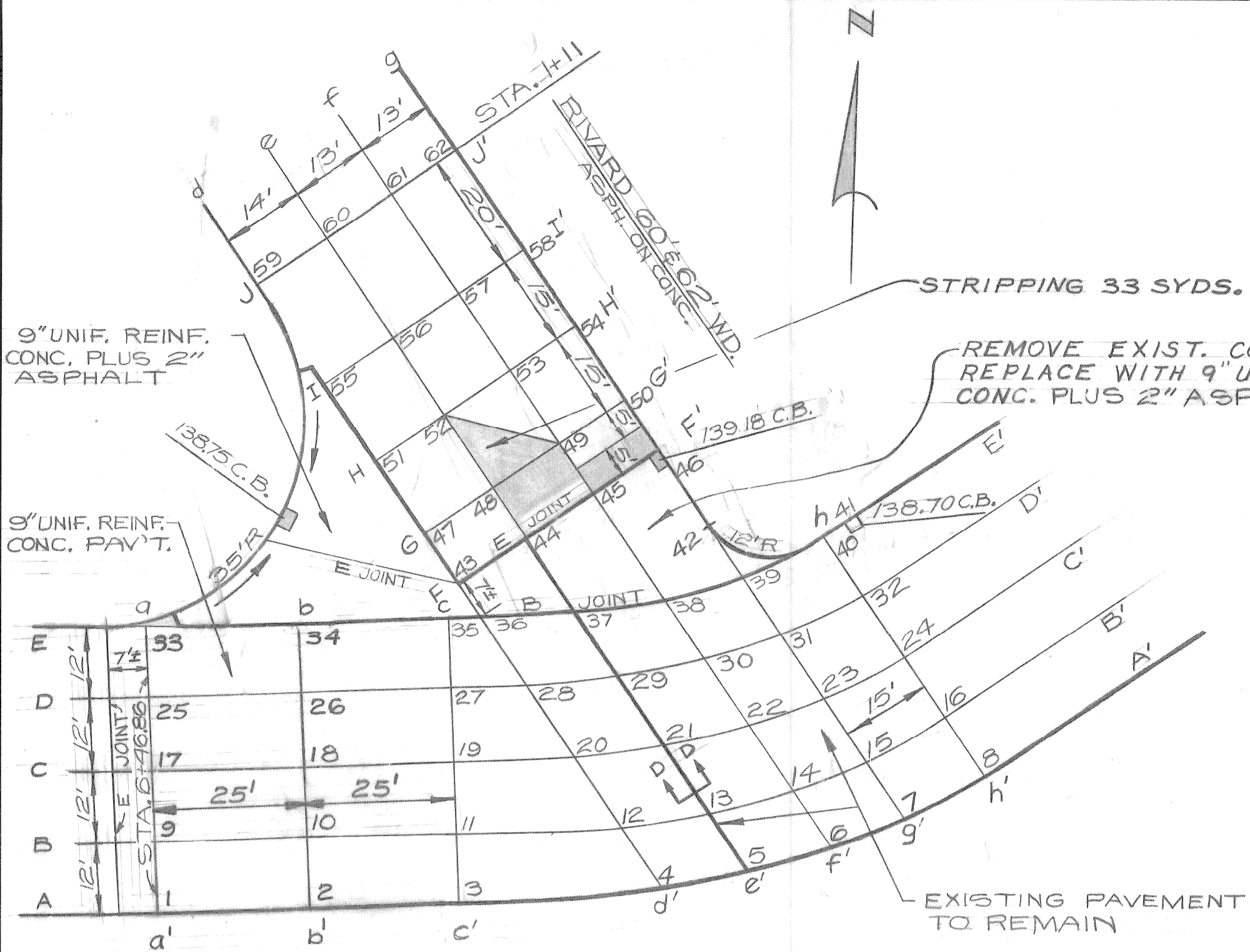
NOTE: ALL STATIONING IS ALONG THE CL OF THE PROPOSED 48' ROADWAY



PROFILE SCALES
HORIZ. 1"=40'
VERT. 1"=2'

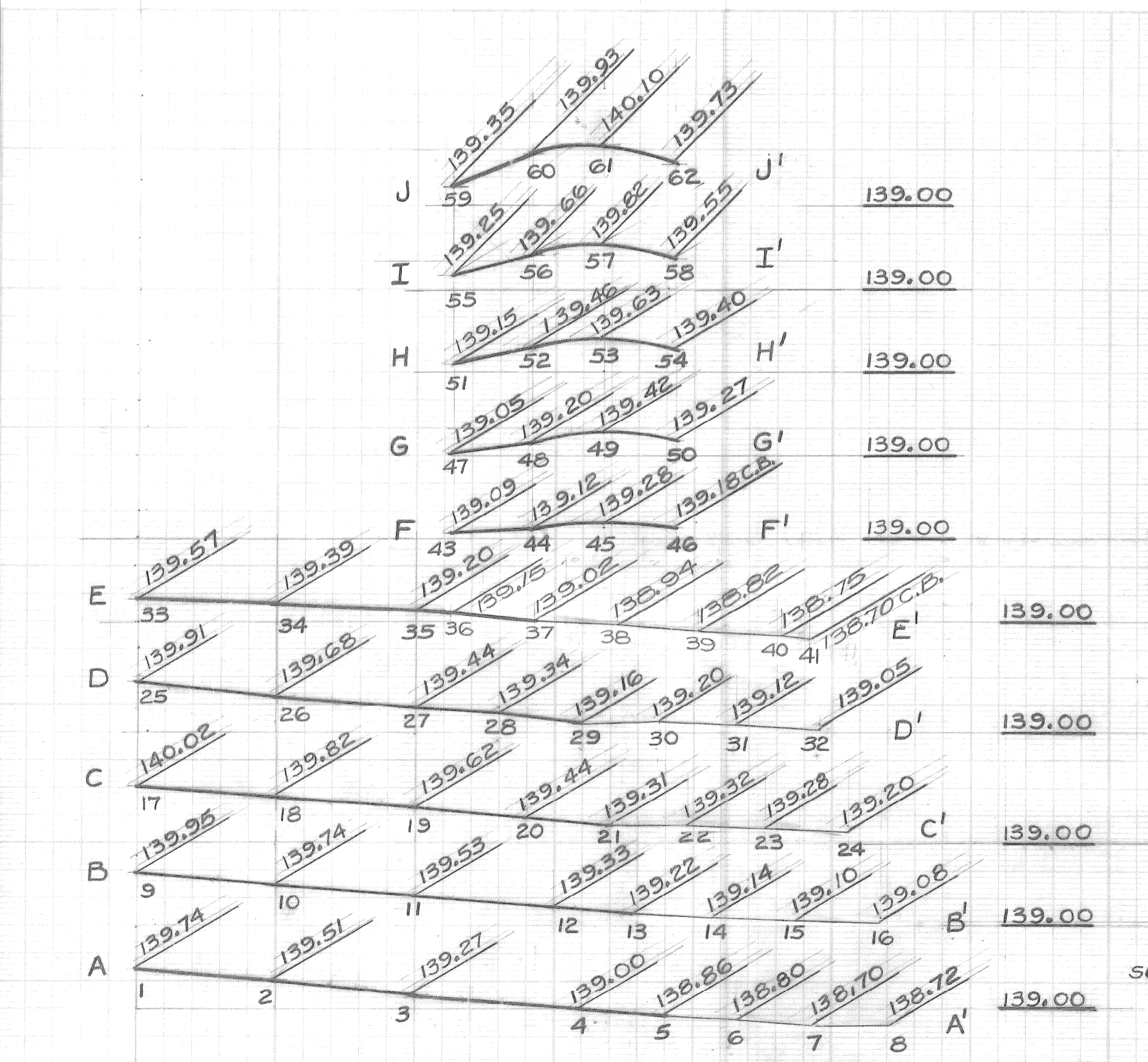
2/6/75
Sewer Approved
P. D. M.

PLAN BY: J.P.H. CHECKED BY: J.P.H. APPROVED: <i>William P. Kawas</i> ENGINEER OF STREETS		CITY OF DETROIT CITY ENGINEERING DEPARTMENT FOR COMMUNITY AND ECONOMIC DEVELOPMENT DEPARTMENT	PAVING OF CHRYSLER EAST SERVICE DRIVE FROM ADELAIDE TO RIVARD WHOLESALE DISTRIBUTION CENTER NO. 1 MICH. R-86	INDEX NO. 4 SHEET 7 OF 48 SHEETS CONTRACT NO. PW 6563 ASSIGNMENT NO. 1840 (C) DATE 3-3-75
ESTIMATE BY: J.P.H. CHECKED BY: J.P.H. REVIEW: J.P.H.				

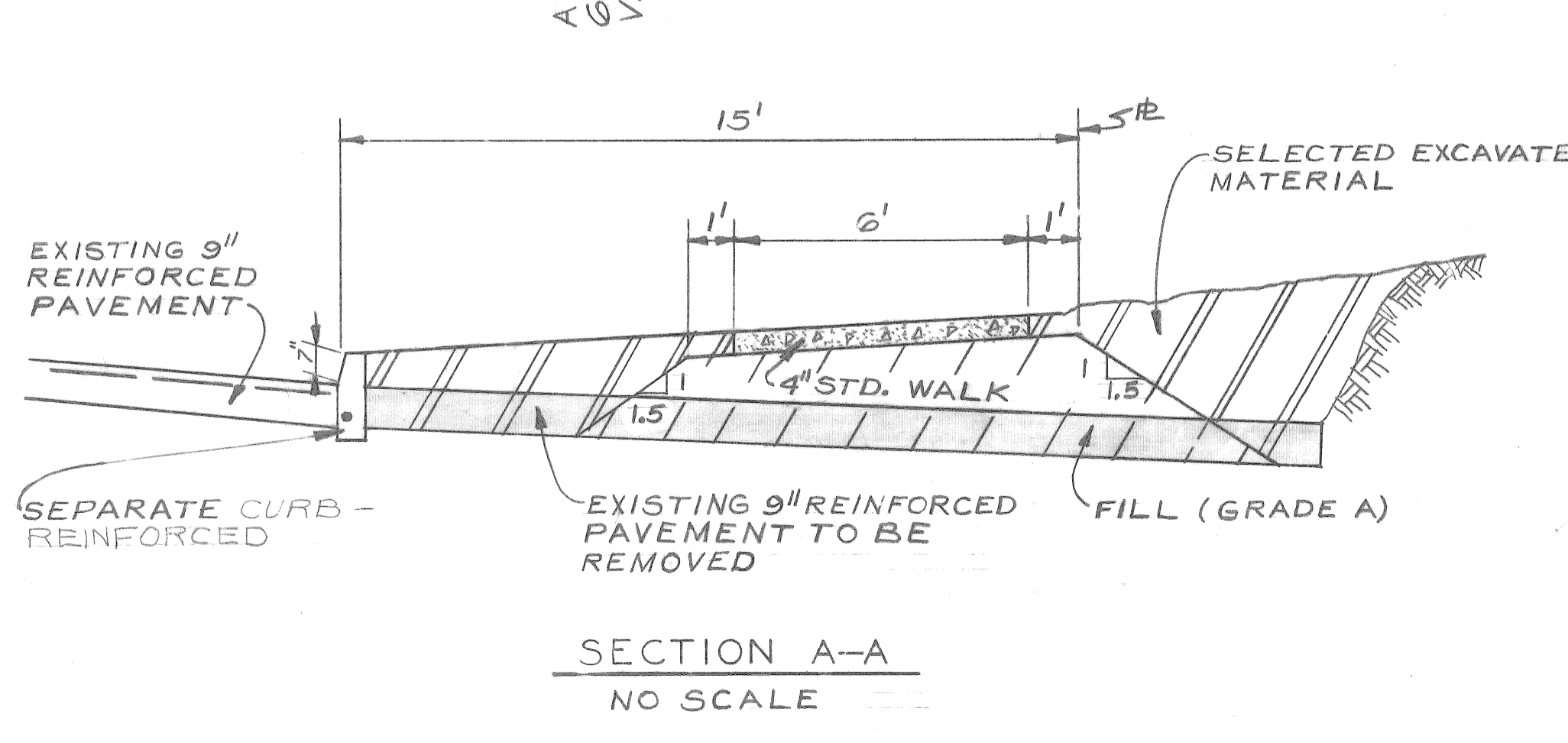
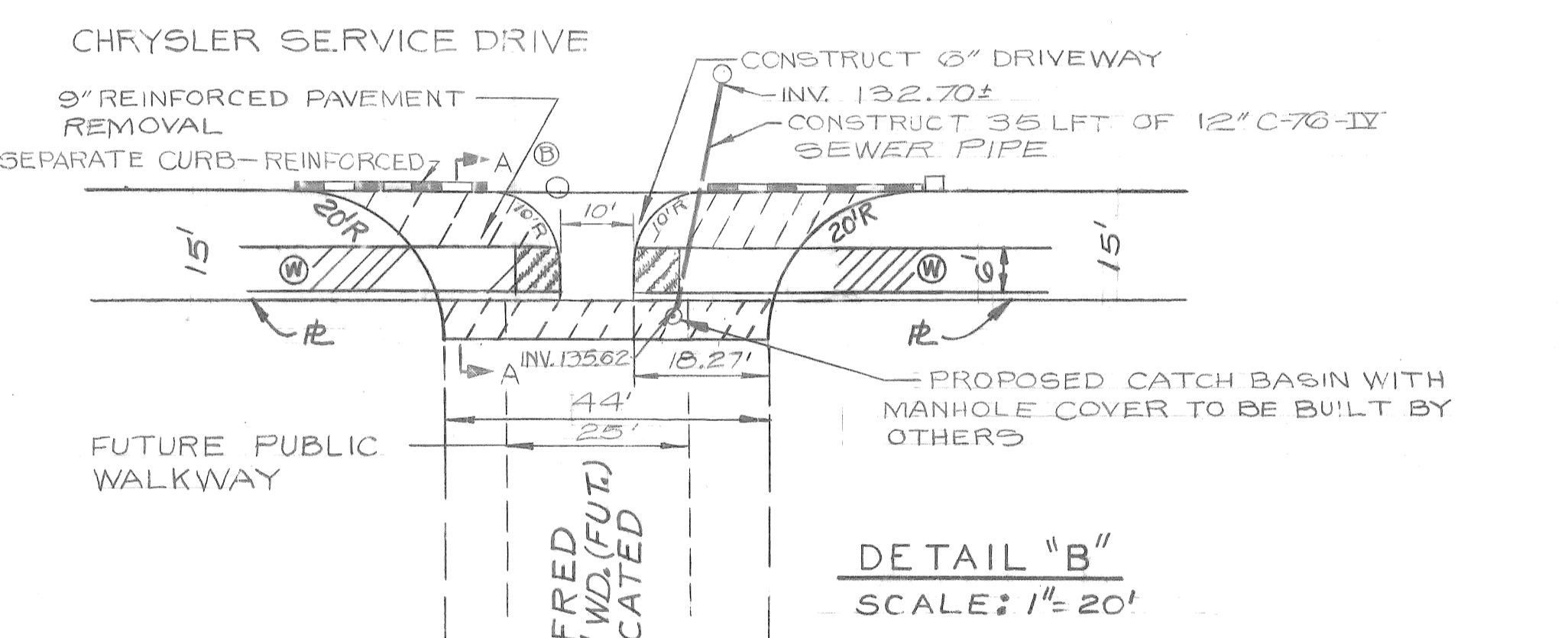
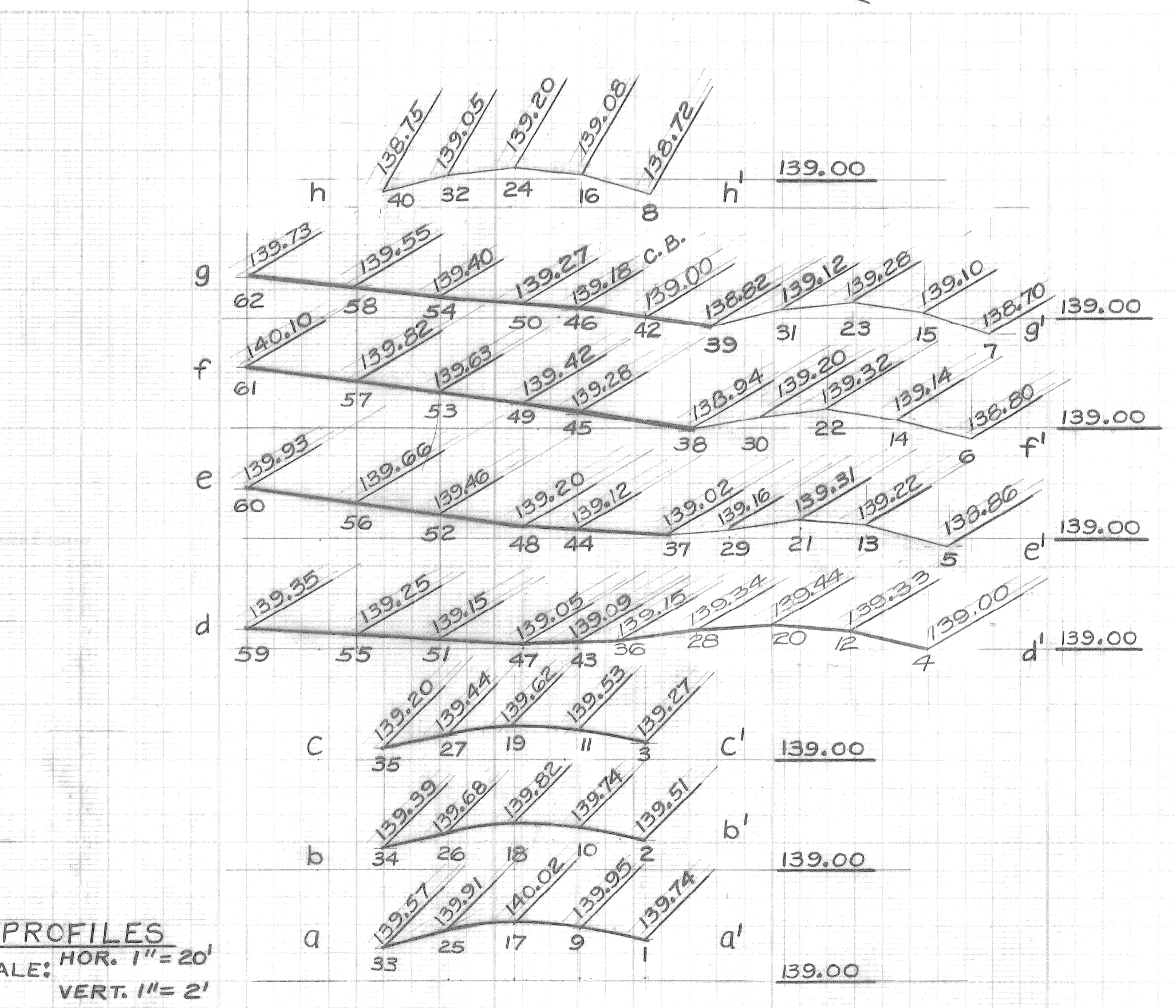


EXT. - CHRYSLER EAST SERVICE DRIVE
9\"/>

RIVARD-CHRYSLER SERVICE DRIVE INTERSECTION
SCALE: 1" = 20'



PROFILES
SCALE: HOR. 1" = 20'
VERT. 1" = 2'



AS BUILT	BY	CHECKED BY	APPROVED:				
4 DRIVEWAYS ADDED ON WATSON THICKNESS CHANGED	D.W.		<p>CITY OF DETROIT CITY ENGINEERING DEPARTMENT FOR COMMUNITY AND ECONOMIC DEVELOPMENT DEPARTMENT</p> <p><i>Naim J. Rawwas</i> ENGINEER OF STREETS</p>				
PROP. 6\"/>							
4 DRIVEWAYS ADDED ON WATSON BET. RIVARD & RUSSELL	D.W.						
DELETED 4\"/>							
REVISIONS	DESCRIPTION	DRN	CK'D	AP'VD	DATE	FINAL	REVIEW
1							

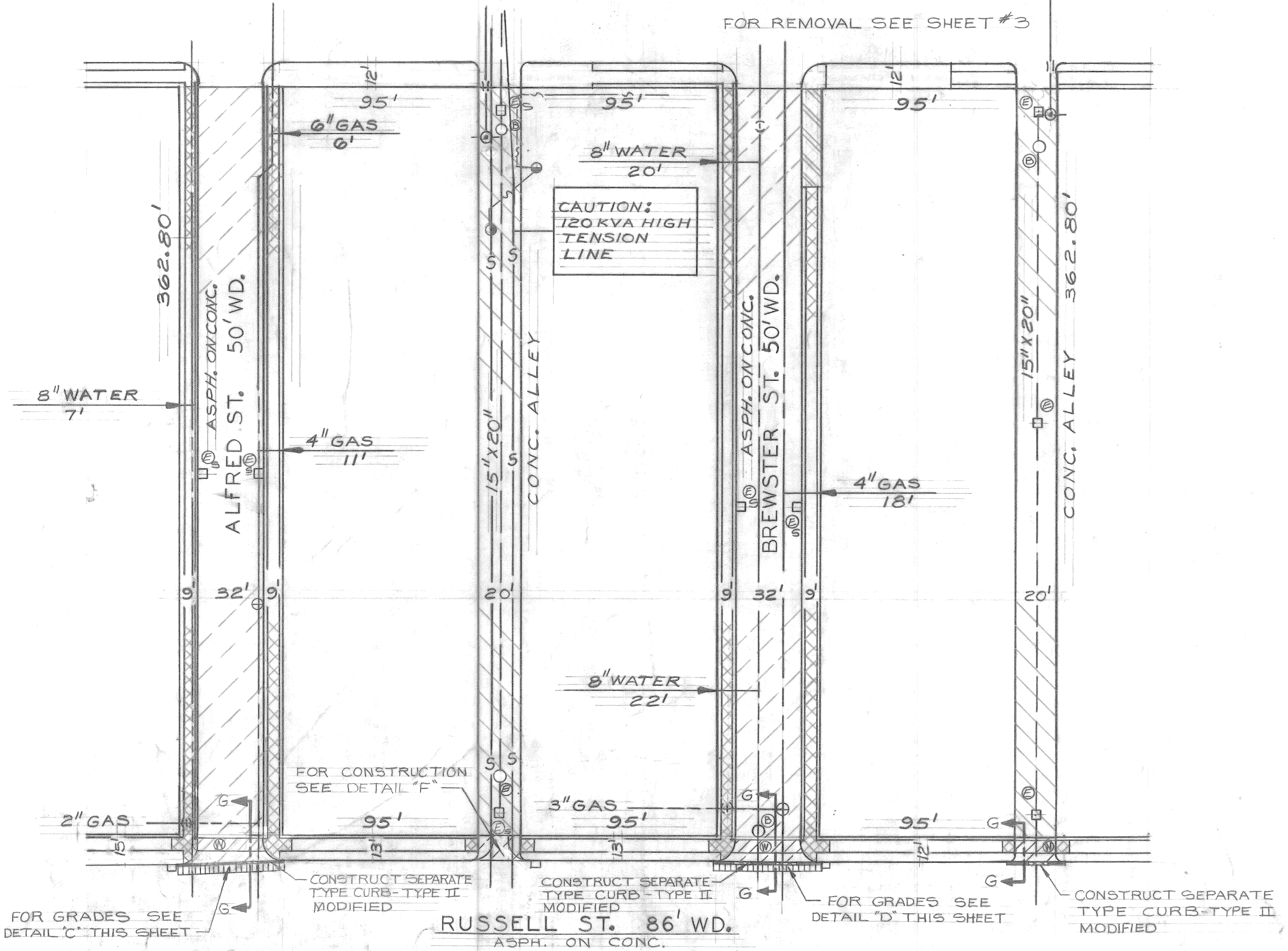
CITY OF DETROIT
CITY ENGINEERING DEPARTMENT
FOR
COMMUNITY AND ECONOMIC DEVELOPMENT DEPARTMENT

MISCELLANEOUS CONSTRUCTION		INDEX NO.	4
WHOLESALE DISTRIBUTION CENTER NO. 1 MICH. R-86		SHEET	8 OF 48 SHEETS
		CONTRACT NO.	PW 6563
		ASSIGNMENT NO.	1840(C)&(D)
		DATE	3-3-75

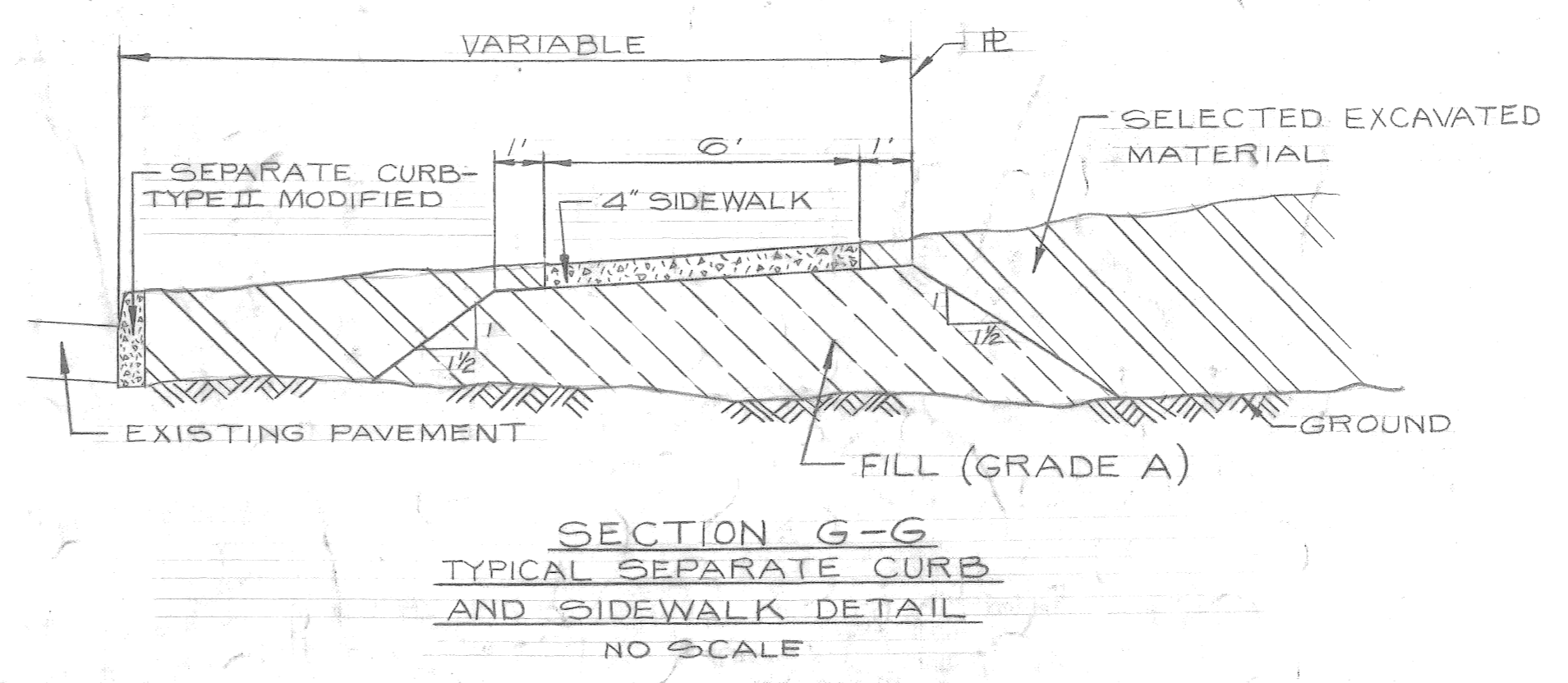
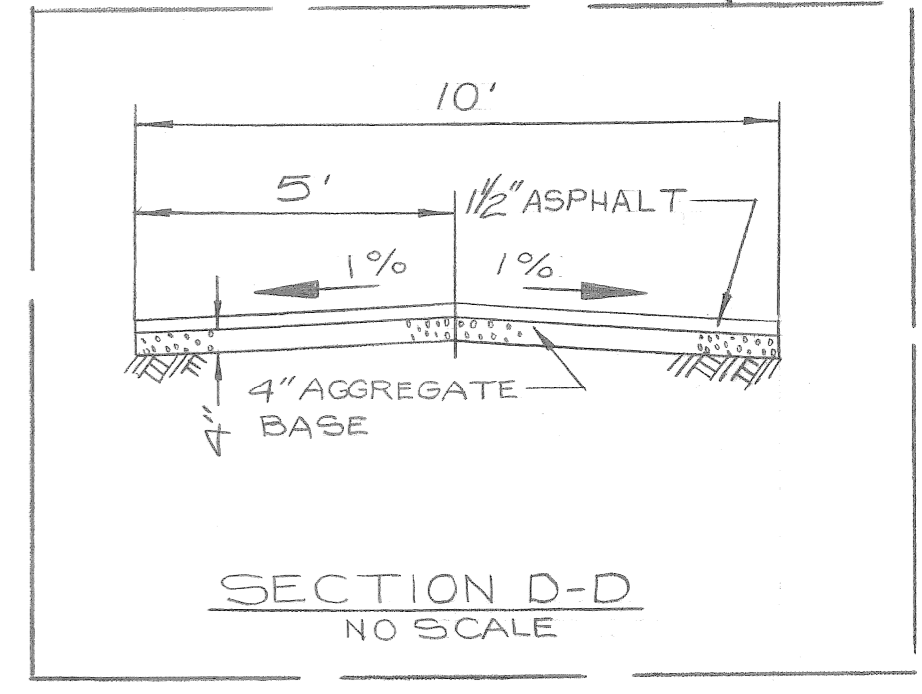
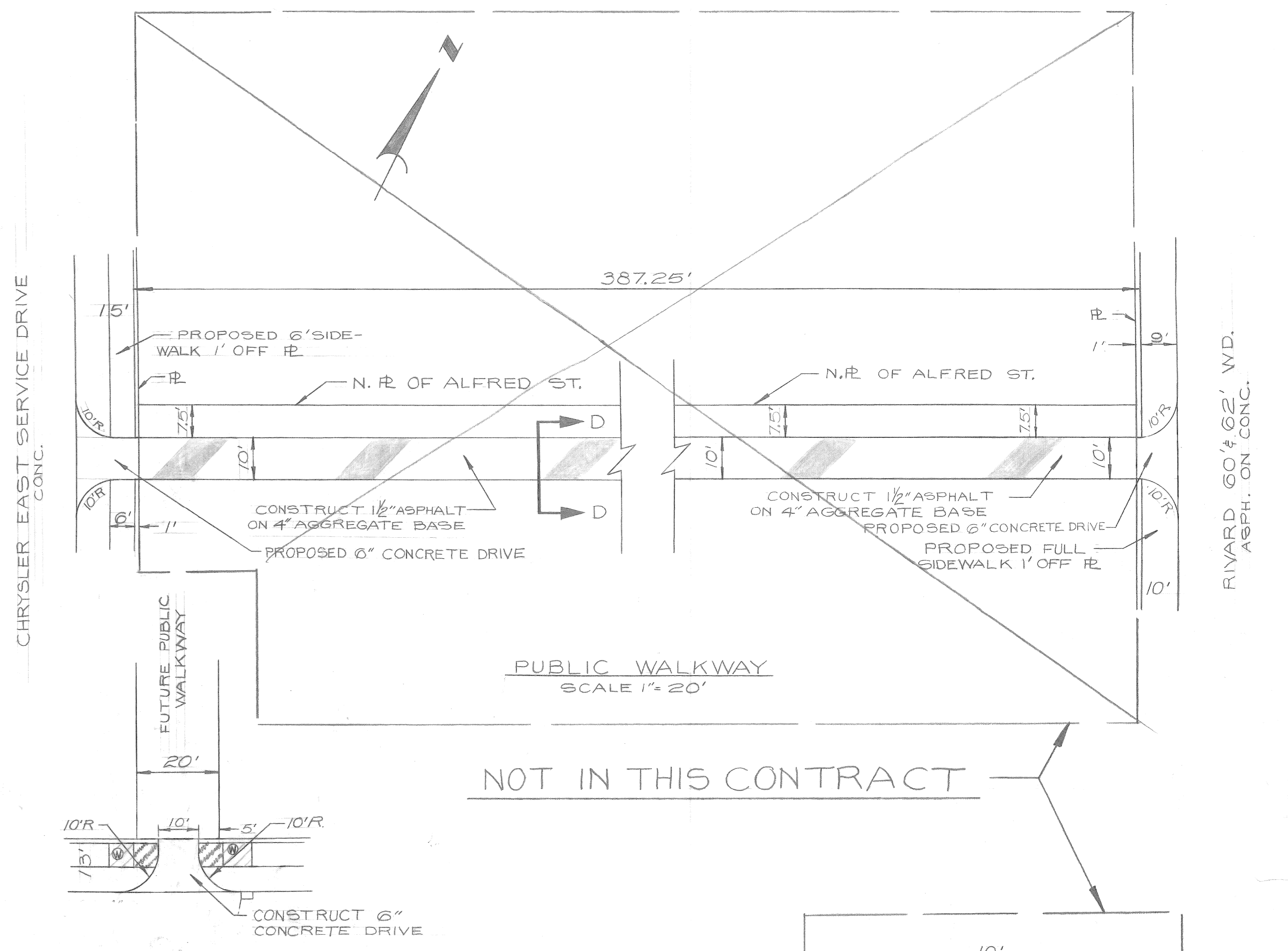
2/6/75
Sewer Approved
D.D.

- NOTES:**
1. FOR REMOVAL LEGEND SEE SHEET # 4
 2. FOR GENERAL NOTE SEE SHEET # 4
 3. FOR UTILITY LEGEND SEE STD. DRWG. C-902-A
 4. FOR DETAILED QUANTITIES SEE SHEET # 10
 5. FOR CONSTRUCTION LEGEND SEE SHEET # 5
 6. FOR EARTHWORK LEGEND SEE SHEET # 3

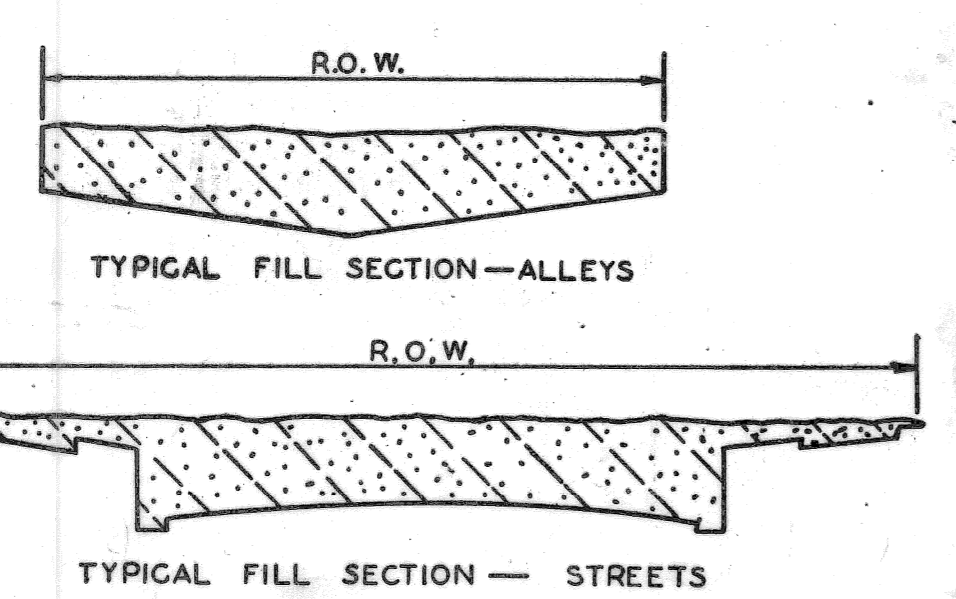
RIVARD ST. 50' WD.



SCALE 1" = 40'



NOTE - APPROXIMATELY 2250 CYDS OF FILL (EARTH MATERIAL) ARE REQUIRED FOR THIS SHEET.



CALL MISS DIG
48 HOURS PRIOR TO
CONSTRUCTION 647-7344

⊙ - CATCH BASIN - SPECIAL ABANDONMENT

REVISIONS LOCATED BY COORDINATES ON SHEET AS BUILT PUBLIC WALKWAY DELETED DELETED 4" CAST IRON PIPE AT RUSSELL		DESIGNED BY: <i>D. E. U.</i> DRAWN BY: <i>D. E. U.</i> TRACED BY: CHECKED BY: <i>D. E. U.</i>	APPROVED: <i>Naim O. Kawas</i> ENGINEER OF STREETS	CITY OF DETROIT CITY ENGINEERING DEPARTMENT FOR COMMUNITY AND ECONOMIC DEVELOPMENT DEPARTMENT	MISCELLANEOUS CONSTRUCTION WHOLESALE DISTRIBUTION CENTER NO. 1 MICH. R-86 REMOVAL, UTILITY AND MISCELLANEOUS CONSTRUCTION SHEET	SHEET 9 OF 48 SHEETS CONTRACT NO. PW 6563 ASSIGNMENT NO. 1840 (D) DATE 3-3-75
---	--	--	--	--	---	--

ITEM NO.	DESCRIPTION	UNIT	SHEET #4	SHEET #5	SHEET #6	SHEET #7	SHEET #8	SHEET #9	TOTAL
1	EXCAVATION	CYDS		1214	1278	5383	280	792	8947
2	BERM GRADING	SYDS				646			646
3	STREET PAVEMENT REMOVAL - UNREINFORCED	SYDS	1830	162	351			2852	5195
4	STREET PAVEMENT REMOVAL REINFORCED	SYDS		58			120		178
5	SEPARATE TYPE CURB REMOVAL UNREINF.	LFT		1269	1414			1612	2683
6	ALLEY PAVEMENT REMOVAL	SYDS							179
7	NON-REINFORCED CONCRETE REMOVAL	CYDS		38	50	91			76
8	INTEGRAL TYPE CURB REMOVAL REINF.	LFT		70					2
9	TREE REMOVAL 4"-12" DIA.	EA		2					2
10	TREE REMOVAL 13"-18" DIA.	EA		2					1
11	TREE REMOVAL 24" DIA	EA		1					1
12	STUMP REMOVAL	EA			1				1
13	SIDEWALK REMOVAL	SFT	5389	6442	10004			8945	30780
14	DRIVEWAY REMOVAL	SFT		259	744			423	1426
15	FILL (GRADE A)	CYDS		426	649	2159	27	36	3297
16	GRADING ABANDONED ALLEYS	SYDS						1036	1636
17	GRADING ABANDONED STREETS	SYDS	2347					4031	6378
18	CATCH BASIN ADJUSTMENT	EA				1			1
19	CATCH BASIN ABANDONMENT	EA	1					9	10
20	MANHOLE ADJUSTMENT	EA	5	3	2		1	3	14
21	MANHOLE RECONSTRUCT CONE	EA							1
22	CATCH BASIN "A"	EA		2		1			3
23	CATCH BASIN "B" WITH TRAP	EA		8	4	2			14
24	SEWER 12" PIPE C-76 II	LFT		40		44			84
25	SEWER 12" PIPE C-76 III	LFT		80	30				110
26	SEWER 12" PIPE C-76-IX	LFT				152			152
27	SEWER UNDER PAVEMENT 12" PIPE C-76 III	LFT		10	10				20
28	SEWER UNDER PAVEMENT 12" PIPE C-76-IV	LFT		60	30				90
29	PAVEMENT 9" UNIFORM REINFORCED ***	SYDS		82		413			4215
30	CONC. BASE PAV'T. 9" UNIF. REINF. ***	SYDS		1445	1007				2452
31	CONC. BASE PAV'T. 9" UNIF. NON-REINF. *	SYDS		48	7				55
32	SEPARATE CURB - REINFORCED	LFT					54		54
33	TEST CORES	EA		4	3	3			10
34	SIDEWALKS 4" STANDARD **	SFT		11626	9778	3665	10911	990	36476
35	SIDEWALKS 6" STANDARD **	SFT		755	194		405		1354
36	SIDEWALK RAMP - 4"	EA		2					2
37	SIDEWALK RAMP - 6"	EA		6	2				8
38	CLEAN AND CONDITION EXISTING SURFACE	SYDS		2104	1594				3698
39	RESETTING CATCH BASINS - ALL TYPES	EA		1					1
40	RESETTING MANHOLES	EA		5	6				11
41	RESETTING STOP BOXES	EA							1
42	REMOVING EXISTING CONCRETE BASE	SYDS							30
43	REPL. CONC. BASE WITH GRADE "A" CONC.	SYDS							30
44	REBUILD CATCH BASIN	EA							1
45	SEMI-REBUILD CATCH BASIN	EA							1
46	BITUMINOUS BOND COAT	GAL		663	447				1110
47	HEATING AND PLANING	SYDS		909	337				1246
48	SHEET ASPH. WEARING SURFACE MIXTURE	TONS							15
49	STRIPPING	SYDS		28				35	63
50	BITUMINOUS PRIME COAT	GAL						142	142
51	AGGREGATE BASE PAVEMENT - 4"	SYDS						430	430
52	FILL (22A)	CYDS				392			392
53	INTEGRAL CURB AND 4" SIDEWALK - 2' WIDE	LFT		524	599		683		1806
54	INTEGRAL CURB AND 6" SIDEWALK - 2' WIDE	LFT		253	30		24		307
55	DRIVEWAYS - 6" STANDARD	SFT			286		193		652
56	SEPARATE CURB NON-REINF. TYPE II MOD.	LFT						132	132
57	MAINTAINING TRAFFIC	LUMP SUM							LUMP SUM
58	RESURFACING MIXTURE IN PLACE (ALL NATURAL AGGREGATE)	TONS		193	143				336
59	WEARING SURFACE MIXTURE - 3IA (CD)	TONS		243	164			36	443
60	RESURFACING MIXTURE IN PLACE (ALL SLAG AGGREGATE)	TONS		177	131				308
61	WEARING SURFACE MIXTURE - 3IA(CD)	TONS		229	155			34	418
62	SEWER - 4' PIPE C 13	LFT			55				135
63	SEWER UNDER PAVEMENT 4' PIPE C 13	LFT			15				35
64	RELOCATE CHAIN LINK FENCE - 4 FT. HEIGHT	LFT					10		10
65	CATCH BASIN - SPECIAL ABANDONMENT	EA					55		55
	WATER ITEMS			4	4				8
	ELECTRICAL ITEMS								
	LANDSCAPE ITEMS								

FOR QUANTITIES SEE SHEET # 11
 FOR QUANTITIES SEE SHEET # 20
 FOR QUANTITIES SEE SHEET # 47

NOTES:
 * INCLUDES TYPE III CURBS, SEE STD. DRAWINGS C-4380 OR C-4381.
 ** CONSTRUCTION ONLY.
 *** INCLUDES REINFORCED INTEGRAL CURBS, SEE STD. DRAWING C-4943.
 DUE TO LACK OF INFORMATION ON VACANT LOT - WE HAVE INCLUDED IN THE ESTIMATE ADDITIONAL QUANTITIES FOR EXCAVATION, BACKFILL, AND WALL REMOVAL

CHANGED SHEET NUMBERS 214, 464, 113, 124		REVISIONS LOCATED BY COORDINATES ON SHEET	REFERENCE DRAWINGS	DESIGNED BY R Rosik	TRACED BY DEW	CHECKED BY DEW	APPROVED: Naim K. Rawas ENGINEER OF STREETS	CITY OF DETROIT CITY ENGINEERING DEPARTMENT FOR COMMUNITY AND ECONOMIC DEVELOPMENT DEPARTMENT	PAVING OF CHRYSLER EAST SERVICE DRIVE FROM ADELAIDE TO RIVARD AND WIDENING OF RIVARD FROM FISHER SERVICE DRIVE TO WATSON AND MISCELLANEOUS CONSTRUCTION WHOLESALE DISTRIBUTION CENTER NO.1 MICH. R-86	SHEET 10 OF 48 SHEETS CONTRACT NO. PW 6563 ASSIGNMENT NO. 1840 (C) & (D) DATE 3-3-75
---	--	---	--------------------	------------------------	------------------	-------------------	---	--	---	---