

REMOVAL LEGEND

- SINGLE STREETCAR TRACK AND BASE REMOVAL
- DOUBLE STREETCAR TRACK AND BASE REMOVAL
- ALLEY PAVEMENT REMOVAL
- STREET PAVEMENT REMOVAL
- SIDEWALK REMOVAL
- DRIVEWAY REMOVAL
- BLDG. WITHOUT BASEMENT
- BLDG. WITH BASEMENT
- TREE REMOVAL
- ABANDON EXISTING CATCH BASIN
- ADJUST EXISTING MANHOLES
- ABANDON EXISTING MANHOLES

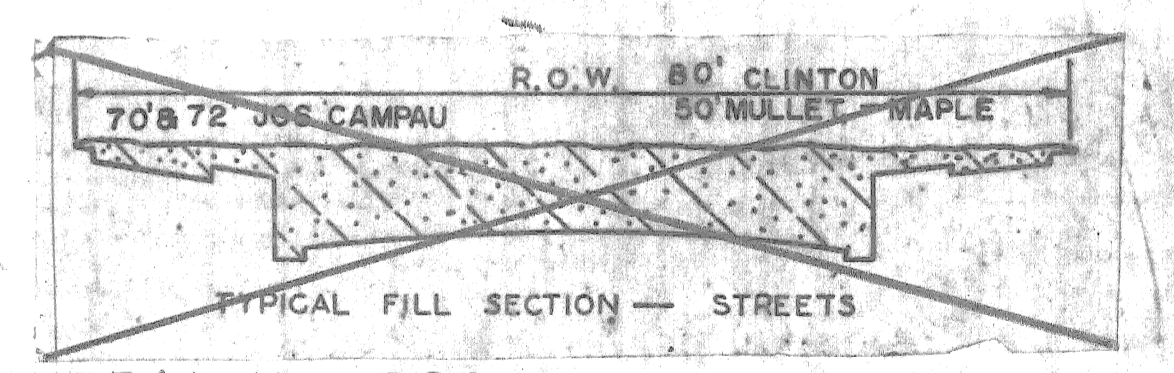
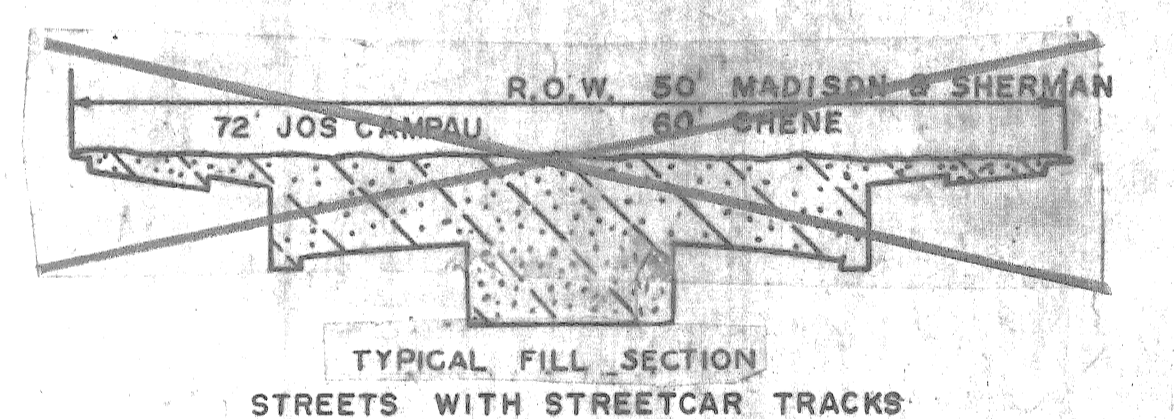
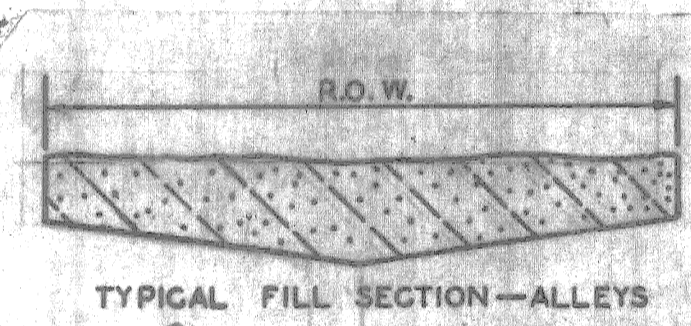
DO NOT REMOVE STREET PAVEMENT

CALL MISS DIG 48 HOURS PRIOR TO CONSTRUCTION 647-7344

LIMITS OF PARCEL #12 BULKHEADING ABANDONED LATERAL SEWER

NOTE - APPROXIMATELY 200 CYDS OF SELECTED EXCAVATED MATERIAL REQUIRED FOR THIS SHEET.

CHANGE ORDER



GENERAL NOTES:

IN PARCEL #12 REMOVE THE EXISTING ALLEY PAVEMENTS, ABANDON CATCH BASINS, MANHOLES, BULKHEAD ABANDONED LATERAL SEWERS, AND GRADE ABANDONED ALLEYS.

BEFORE STARTING CONSTRUCTION THE CONTRACTOR MUST CHECK WITH THE UTILITY COMPANIES TO VERIFY THE LOCATION OF EXISTING STRUCTURES, WHETHER OR NOT INDICATED ON THE PLANS. FOR LEGEND SEE STD. DRWG. C 102-7

REMOVE THE EXISTING STREET AND ALLEY PAVEMENTS, STREET CAR TRACK BASE AND RAILS, CURBS, SIDEWALKS, DRIVEWAYS FROM CLINTON TO VERNOR, AND FROM CHENE TO JOS CAMPAU.

DO NOT REMOVE THE TREES OR STUMPS UNLESS THEY ARE IN RELOCATED CHENE OR MAPLE CUL-DE-SAC PAVING AREA.

SUPPLEMENTAL CONTRACT DRAWING

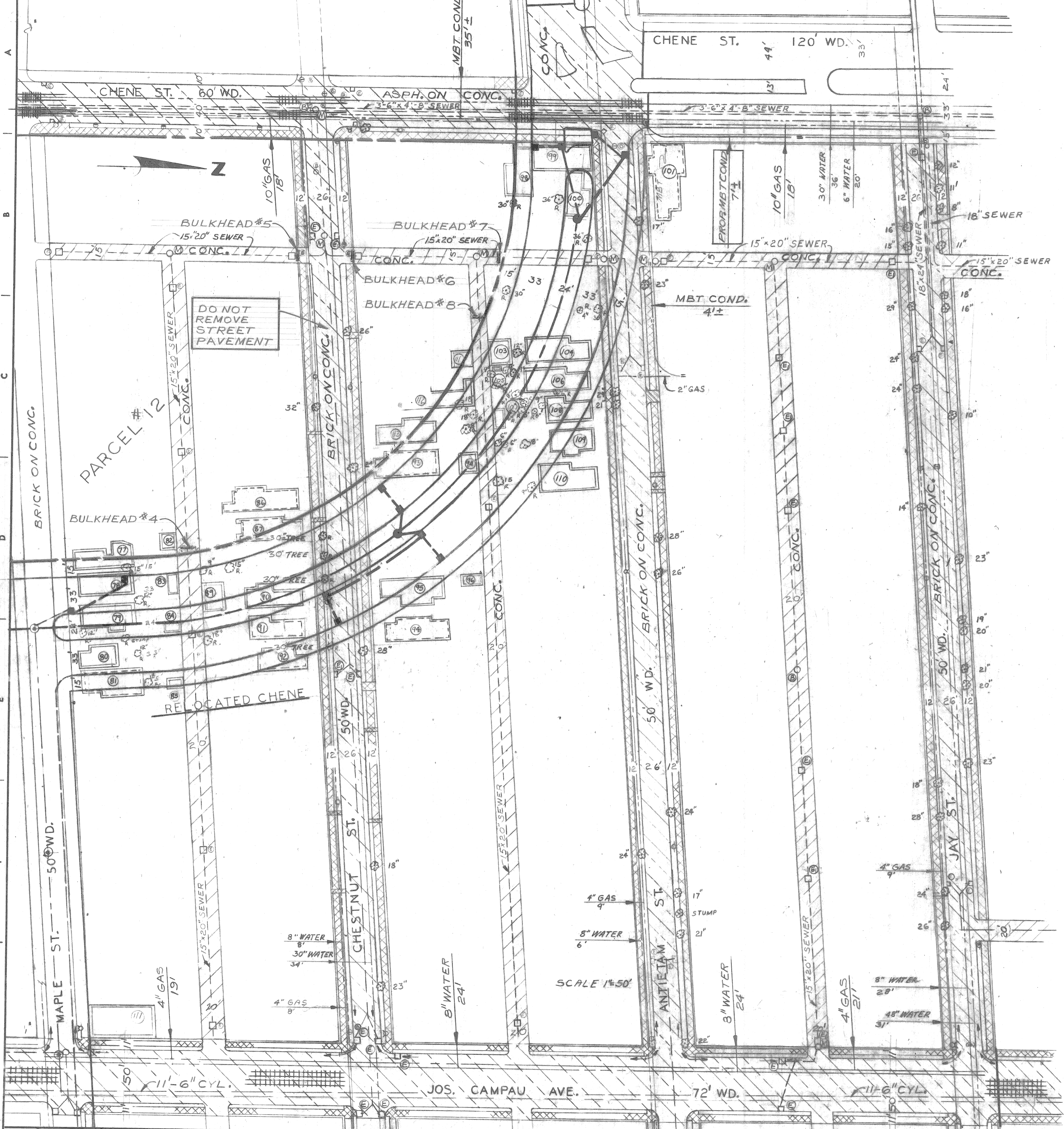
DESIGNED BY	LISTON	APPROVED:	<i>Norm O. Kawwos</i> ENGINEER OF STREETS
DRAWN BY	LISTON	CHECKED BY	<i>W.R. Morris</i>
TRACED BY			
COORD	DESCRIPTION	DWN	CHKD
REVISIONS LOCATED BY COORDINATES ON SHEET			

CITY OF DETROIT
CITY ENGINEERING DEPARTMENT
FOR
COMMUNITY AND ECONOMIC DEVELOPMENT DEPARTMENT

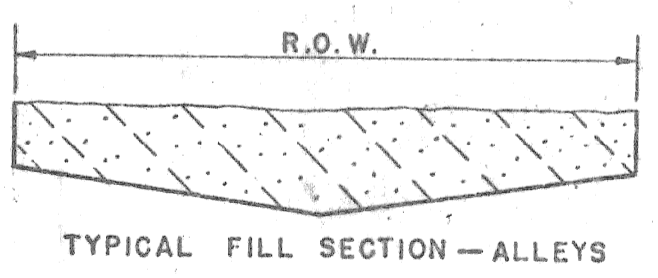
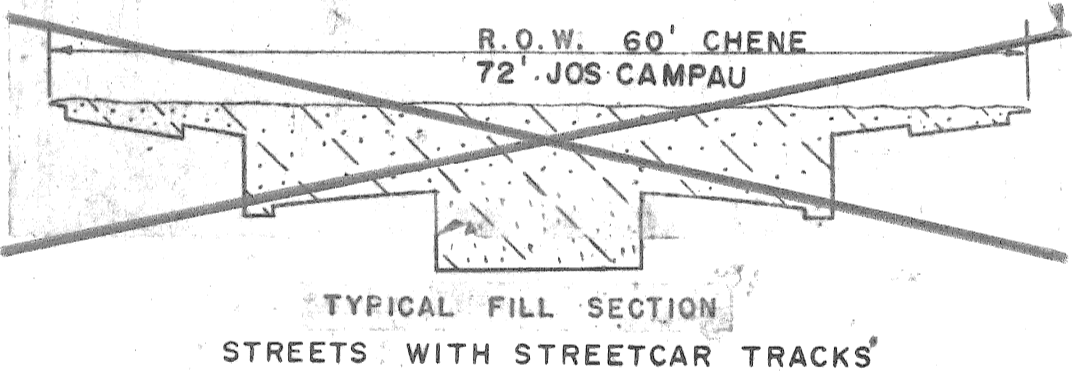
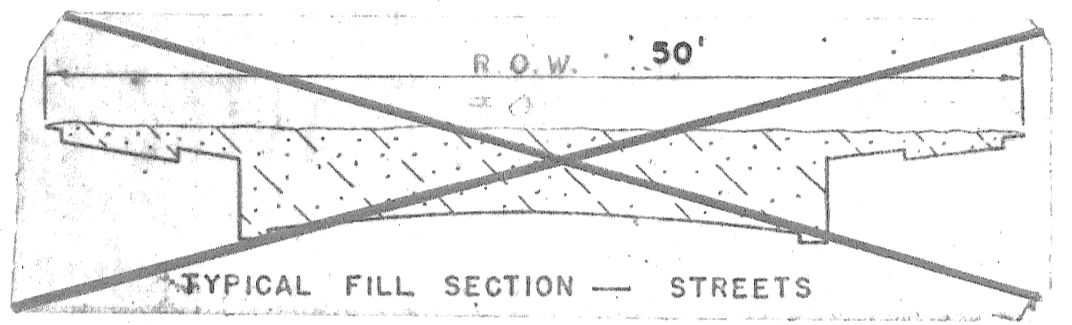
REMOVALS AND SITE IMPROVEMENTS
NORTH SIDE INDUSTRIAL REHABILITATION PROJECT
MICH. R-119

REMOVAL AND UTILITIES

SHEET	7A	OF	7
CONTRACT No.	PW.6561		
ASSIGNMENT No.			
DATE	10-17-75		



NOTE -
APPROXIMATELY 300 CYDS. OF
SELECTED EXCAVATED MATERIAL
REQUIRED FOR THIS SHEET.
CHANGE ORDER



CALL MISS DIG
48 HOURS PRIOR TO
CONSTRUCTION 647-7344

NOTES:
1. FOR REMOVAL LEGEND SEE SHEET #7A
2. FOR GENERAL NOTES SEE SHEET #7A

SCALE: 1/4"=30'

NO.	DESCRIPTION	DATE

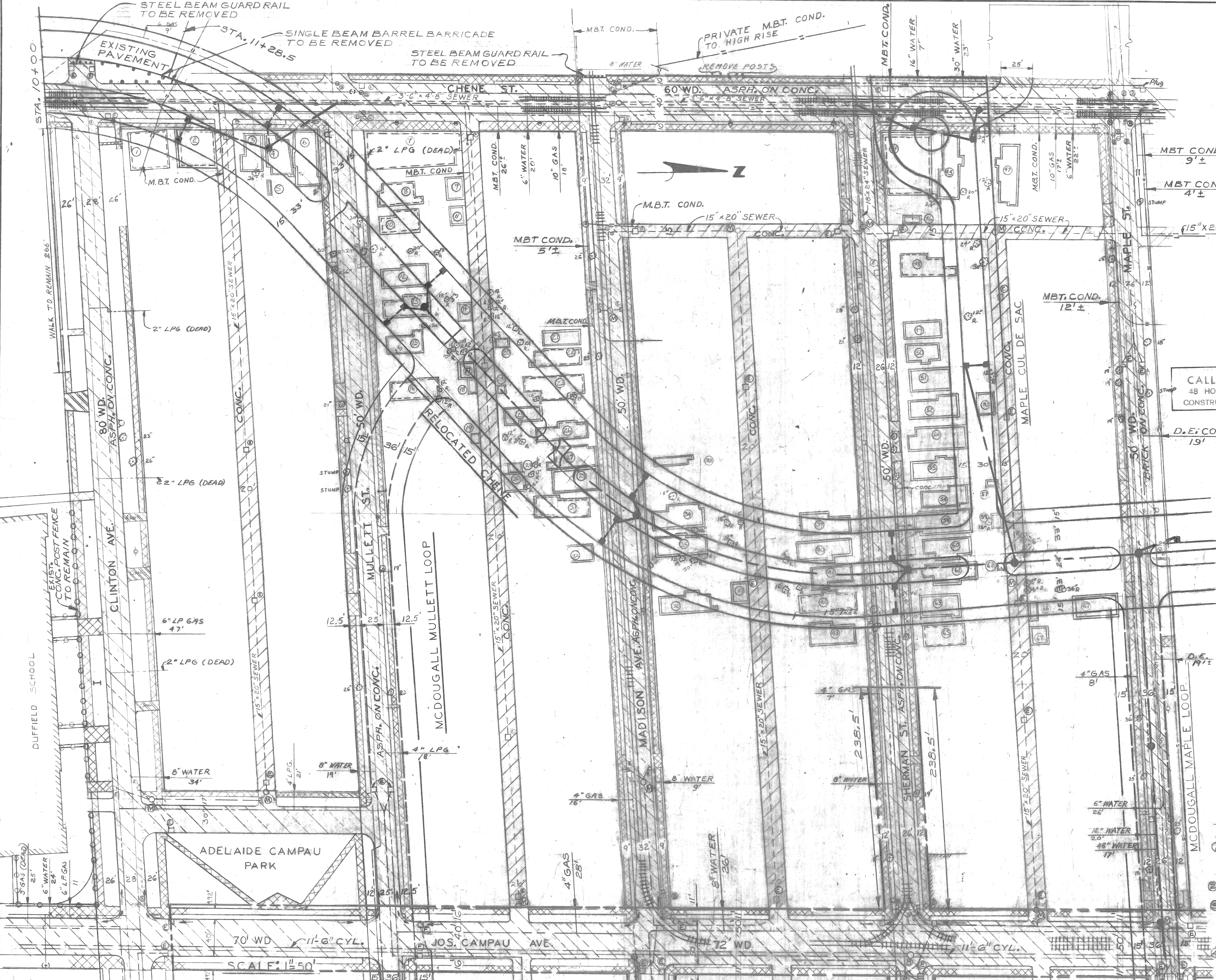
DESIGNED BY	LISTON
DRAWN BY	
TRACED BY	
CHECKED BY	

APPROVED:
William J. Kawras
ENGINEER OF STREETS

CITY OF DETROIT
CITY ENGINEERING DEPARTMENT
FOR
COMMUNITY AND ECONOMIC DEVELOPMENT DEPARTMENT

SUPPLEMENTAL CONTRACT DRAWING
REMOVALS AND SITE IMPROVEMENTS
NORTH SIDE INDUSTRIAL REHABILITATION PROJECT
MICH. R-119
REMOVAL AND UTILITIES

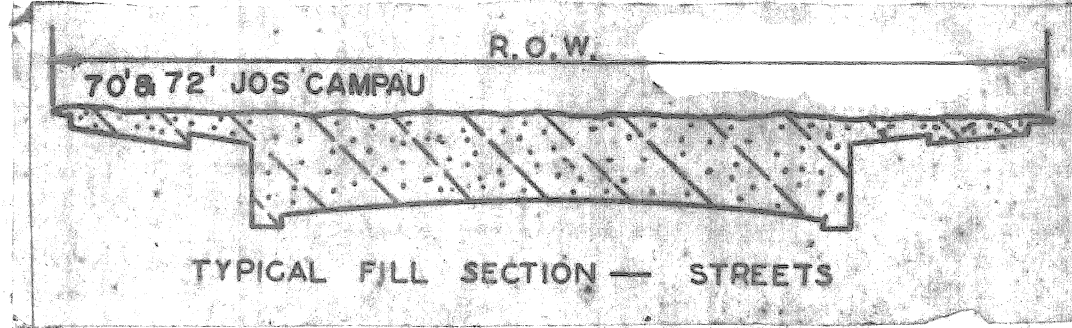
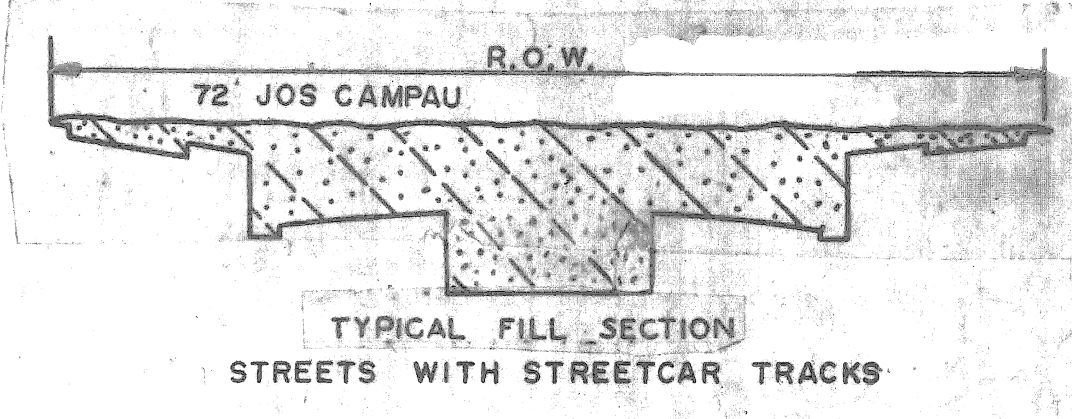
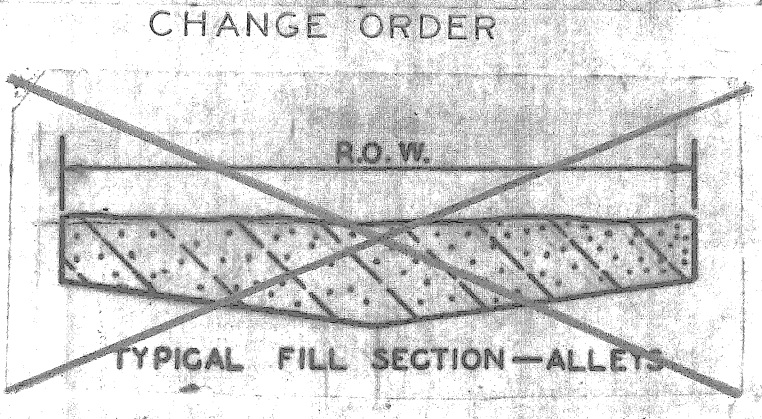
SHEET 8A OF 8 SHEETS
CONTRACT No. PW6561
ASSIGNMENT No.
DATE 10-17-75



- REMOVAL LEGEND**
- SINGLE STREETCAR TRACK AND BASE REMOVAL
 - DOUBLE STREETCAR TRACK AND BASE REMOVAL
 - ALLEY PAVEMENT REMOVAL
 - STREET PAVEMENT REMOVAL
 - SIDEWALK REMOVAL
 - DRIVEWAY REMOVAL
 - BLDG. WITHOUT BASEMENT
 - BLDG. WITH BASEMENT
 - TREE REMOVAL
 - Ⓔ ABANDON EXISTING CATCH BASIN
 - Ⓑ ADJUST EXISTING MANHOLES
 - Ⓜ ABANDON EXISTING MANHOLES
 - LIMITS OF REMOVAL

CALL MISS DIG
48 HOURS PRIOR TO
CONSTRUCTION 647-7344

NOTE —
APPROXIMATELY 4141 CYDS OF
SELECTED EXCAVATED MATERIAL
REQUIRED FOR THIS SHEET.



JOS. CAMPAU FROM NORTH PROPERTY LINE OF CLINTON TO NORTH PROPERTY LINE OF MAPLE AND SHERMAN 238.5' WEST OF WEST PROPERTY LINE OF JOS. CAMPAU TO THE WEST PROPERTY LINE OF JOS. CAMPAU ARE THE LIMITS OF REMOVAL FOR THIS SHEET.

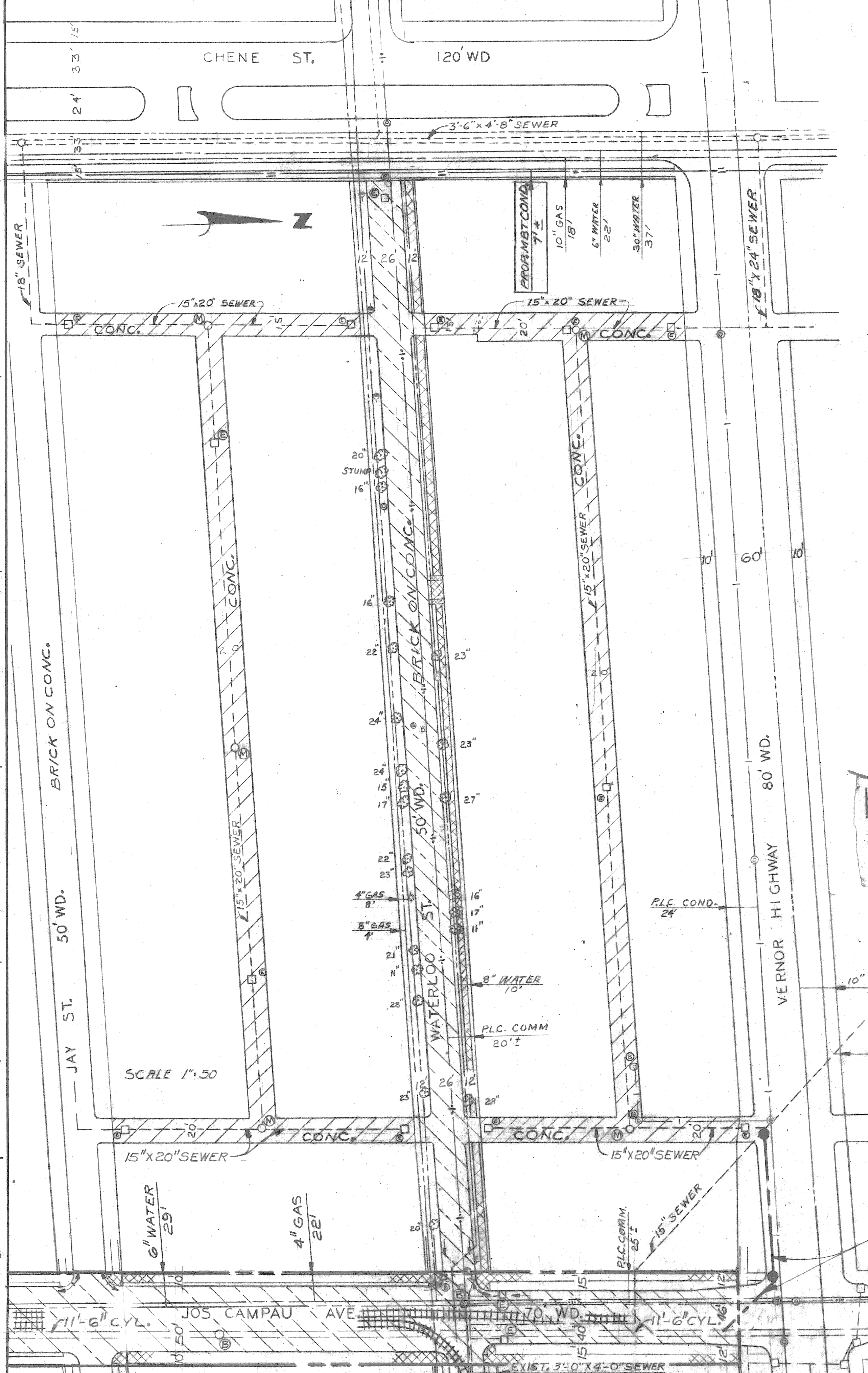
- GENERAL NOTES:**
- 1 BEFORE STARTING CONSTRUCTION THE CONTRACTOR MUST CHECK WITH THE UTILITY COMPANIES TO VERIFY THE LOCATION OF EXISTING STRUCTURES, WHETHER OR NOT INDICATED ON THE PLANS.
 - 2 FOR LEGEND SEE STD. DRWG. C 902-A
 - 3 REMOVE THE EXISTING STREET AND ALLEY PAVEMENT, STREET CAR TRACK BASE AND RAILS, CURBS, SIDEWALKS, DRIVEWAYS FROM CLINTON TO VERNOR AND FROM CHENE TO JOS CAMPAU.
 - 4 DO NOT REMOVE THE TREES OR STUMPS UNLESS THEY ARE IN RELOCATED CHENE OR MAPLE CUL-DE-SAC PAVING AREA.

DESIGNED BY	LISTON
DRAWN BY	
TRACED BY	
CHECKED BY	
APPROVED:	<i>W. D. Kawas</i> ENGINEER OF STREETS

CITY OF DETROIT
CITY ENGINEERING DEPARTMENT
FOR
COMMUNITY AND ECONOMIC DEVELOPMENT DEPARTMENT

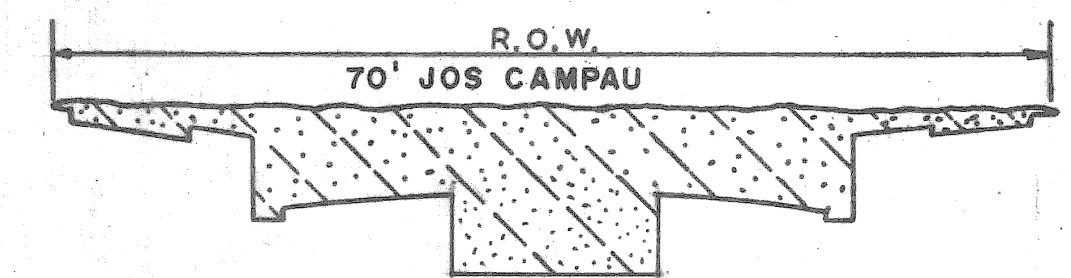
REMOVALS AND SITE IMPROVEMENTS
NORTH SIDE INDUSTRIAL REHABILITATION PROJECT
MICH. R-119

SHEET	9A	OF	9	SHEETS
CONTRACT NO.	PW 6561			
ASSIGNMENT NO.	REMOVAL AND UTILITIES			
DATE	10-23-75			

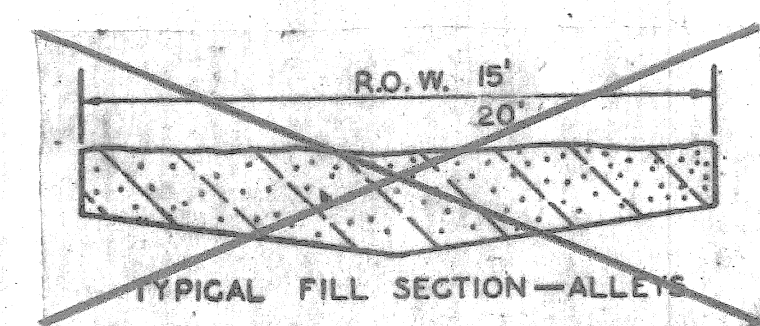


NOTE — APPROXIMATELY 1790 CYDS OF SELECTED EXCAVATED MATERIAL REQUIRED FOR THIS SHEET.

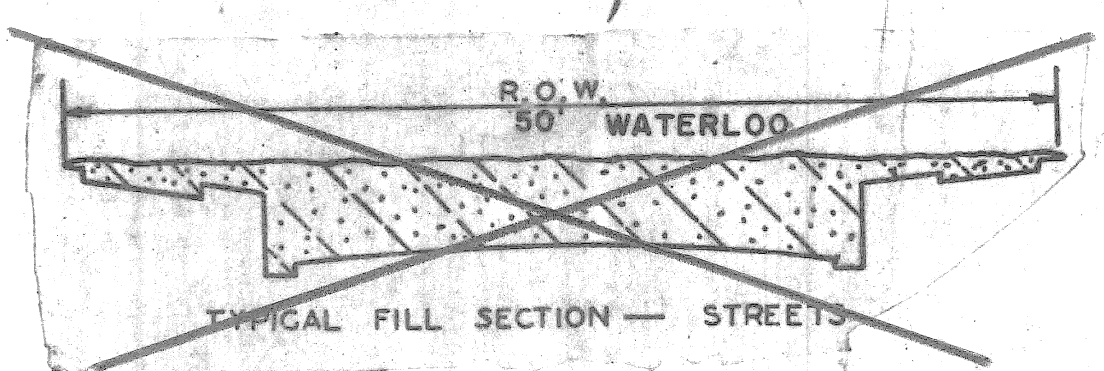
CHANGE ORDER



TYPICAL FILL SECTION STREETS WITH STREETCAR TRACKS



TYPICAL FILL SECTION — ALLEYS



TYPICAL FILL SECTION — STREETS

NOTES:

1. FOR REMOVAL LEGEND SEE SHEET * 9A
2. FOR GENERAL NOTES SEE SHEET * 9A

JOS. CAMPAU FROM NORTH PROPERTY LINE OF JAY TO THE SOUTH PROPERTY LINE OF VERNOR ARE THE LIMITS OF REMOVAL FOR THIS SHEET.

CALL MISS DIG 48 HOURS PRIOR TO CONSTRUCTION 647-7344

SEWER CONSTRUCTION SEE SHEET OF

SCALE: 1"=50'

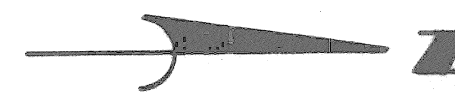
SUPPLEMENTAL CONTRACT DRAWING

DESIGNED BY	LISTON	APPROVED:	<i>Norm D. Kawwas</i> ENGINEER OF STREETS
DRAWN BY	LISTON	CITY ENGINEER	
TRACED BY			
CHECKED BY	<i>Angelo J. ...</i>		

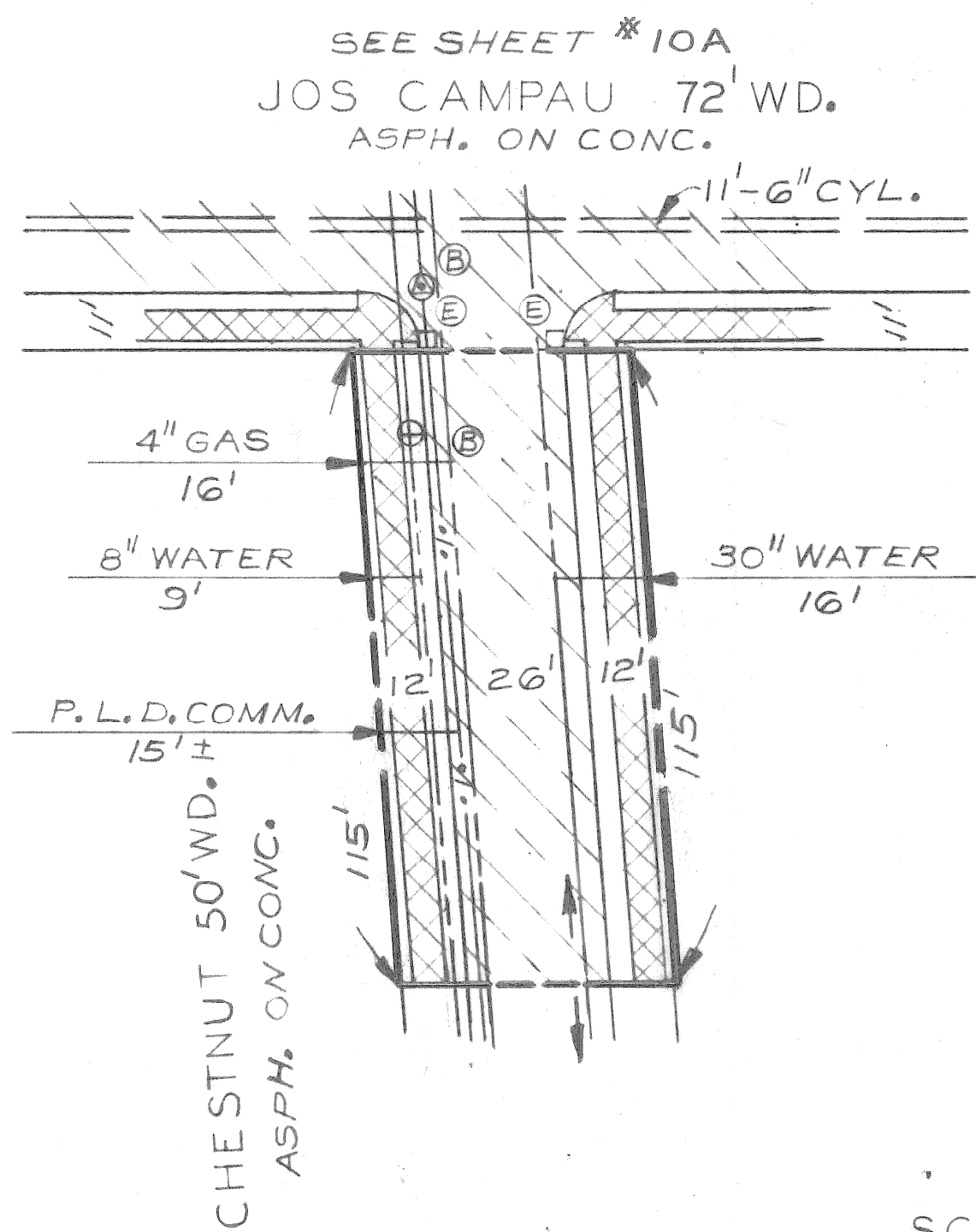
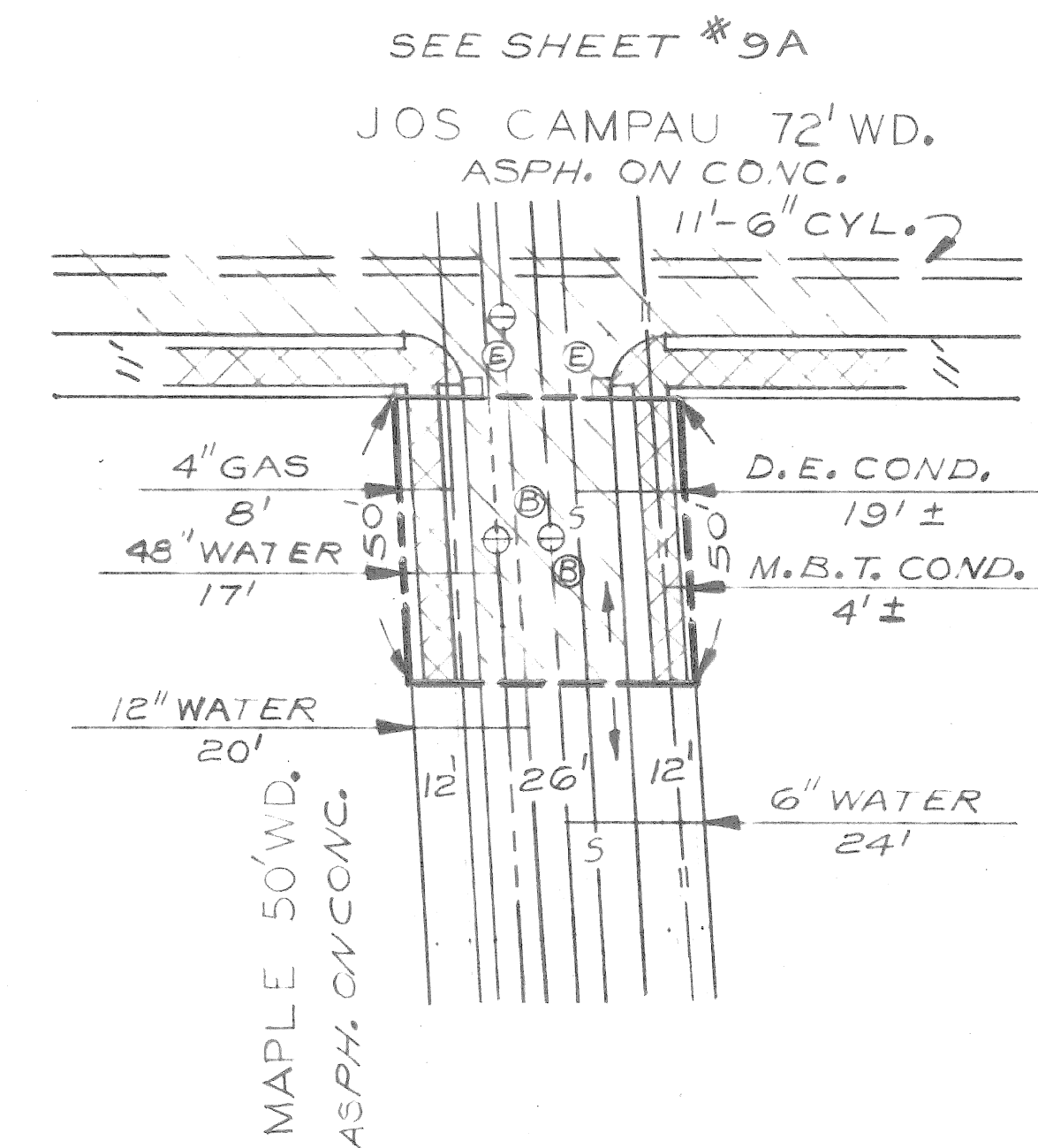
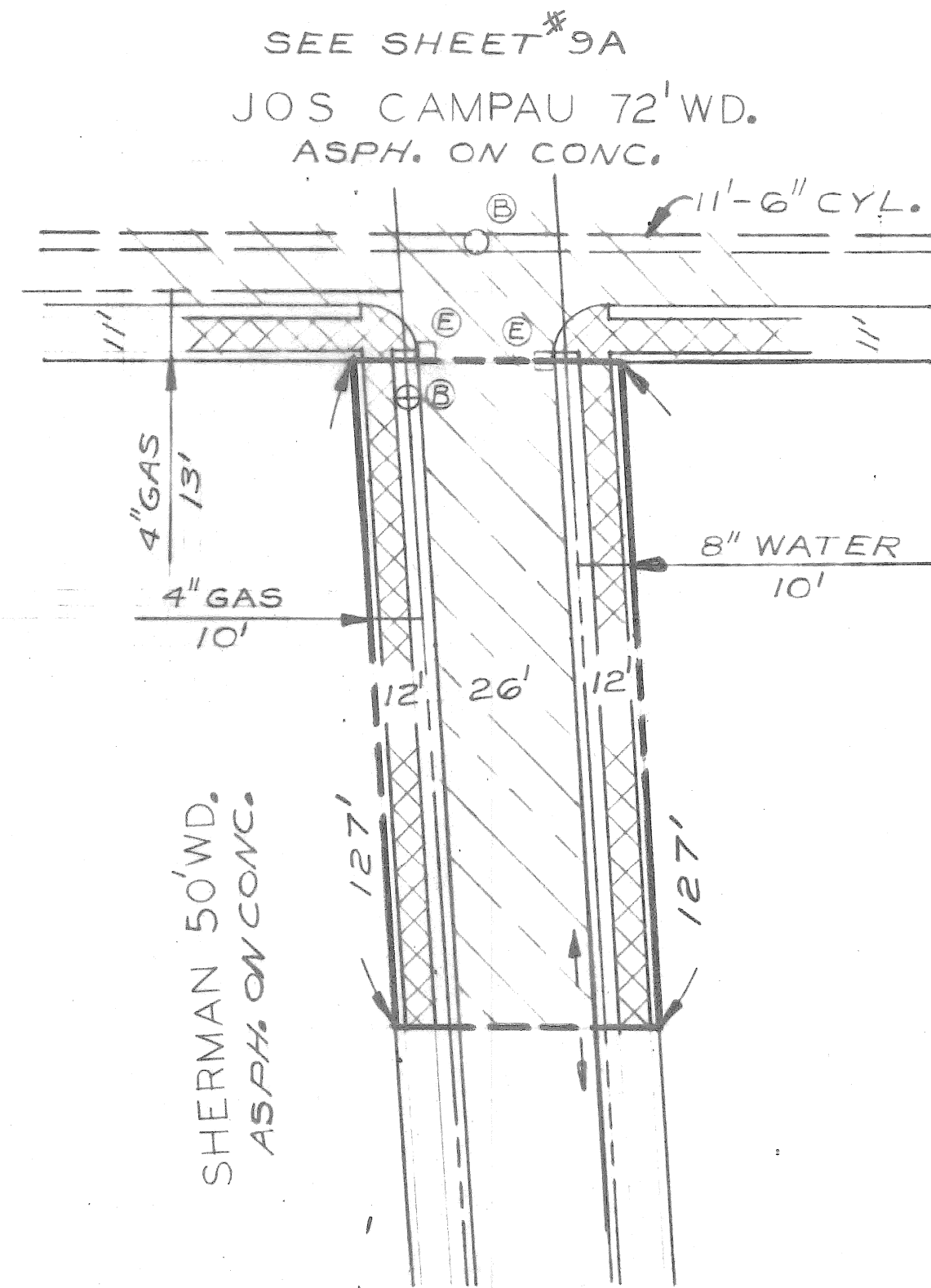
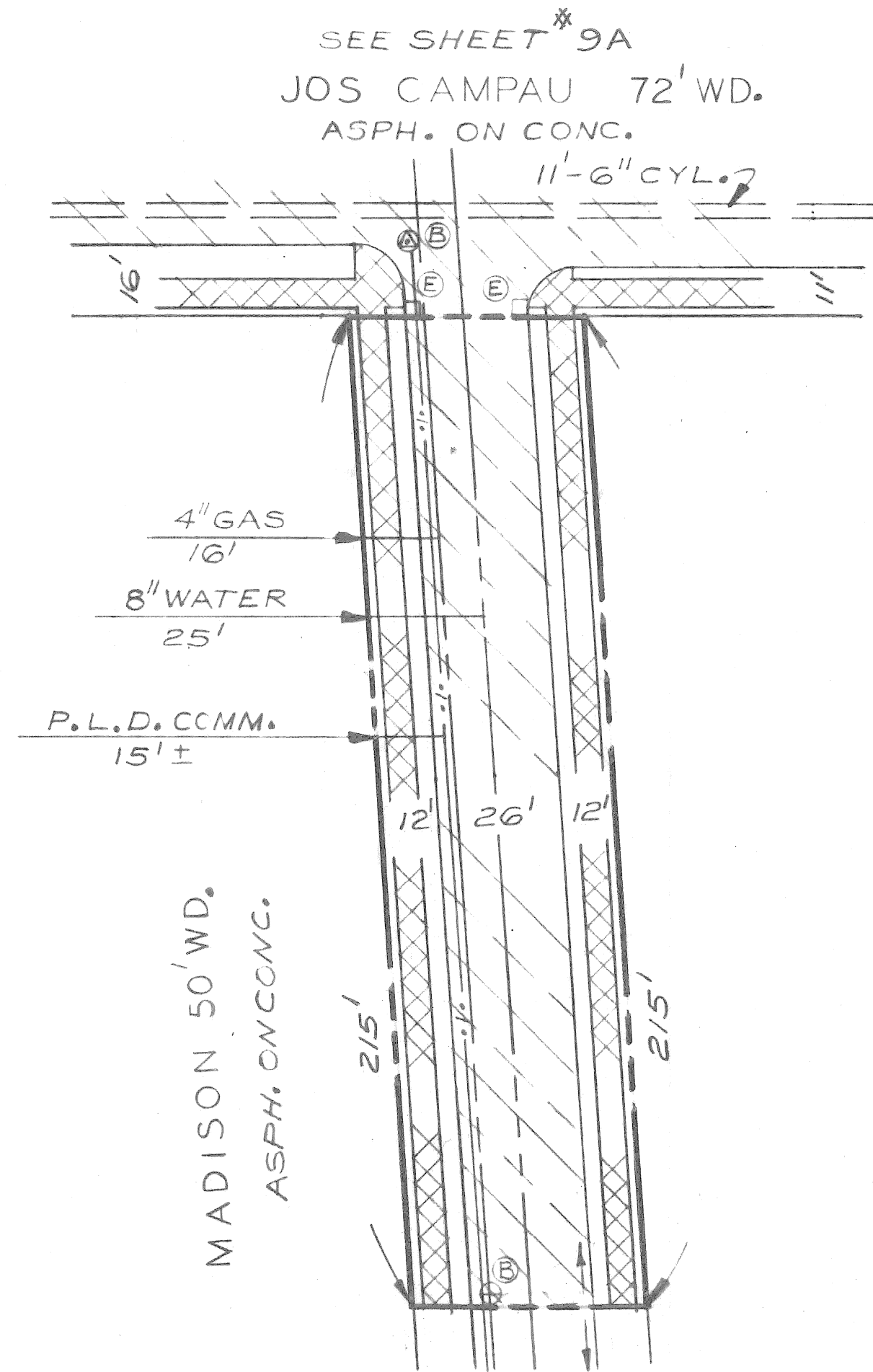
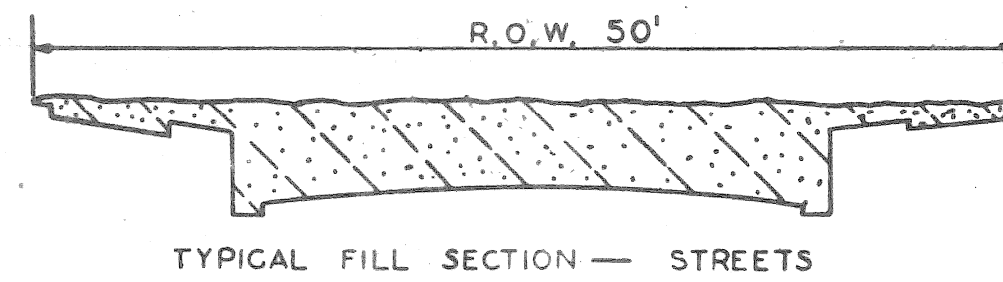
CITY OF DETROIT
CITY ENGINEERING DEPARTMENT
FOR
COMMUNITY AND ECONOMIC DEVELOPMENT DEPARTMENT

REMOVALS AND SITE IMPROVEMENTS
NORTH SIDE INDUSTRIAL REHABILITATION PROJECT
MICH. R-119
REMOVAL AND UTILITIES

SHEET	11A	OF	11	SHEETS
CONTRACT No.	PW 6561			
ASSIGNMENT No.				
DATE	10-23-75			



NOTE —
APPROXIMATELY 1,052 CYDS OF
SELECTED EXCAVATED MATERIAL
REQUIRED FOR THIS SHEET.



CALL MISS DIG
48 HOURS PRIOR TO
CONSTRUCTION 647-7344

- NOTES:
1. FOR REMOVAL LEGEND SEE SHEET *9A
 2. FOR GENERAL NOTES SEE SHEET *9A

THE FOLLOWING STREETS, MADISON, SHERMAN, MAPLE AND CHESTNUT EAST OF JOS. CAMPAU TO THE HIGH POINT ARE THE LIMITS OF REMOVAL FOR THIS SHEET.

SCALE: 1"=30'

SUPPLEMENTAL CONTRACT DRAWING

DESIGNED BY DRAWN BY TRACED BY CHECKED BY				APPROVED: <i>Mason D. Kawas</i> ENGINEER OF STREETS		CITY OF DETROIT CITY ENGINEERING DEPARTMENT FOR COMMUNITY AND ECONOMIC DEVELOPMENT DEPARTMENT			REMOVALS AND SIDE IMPROVEMENTS NORTH SIDE INDUSTRIAL REHABILITATION PROJECT MICH. R-119 REMOVAL AND UTILITIES			SHEET 12A OF ___ SHEETS CONTRACT NO. PW 6561 ASSIGNMENT NO. DATE 10-23-75	
REVISIONS LOCATED BY COORDINATES ON SHEET													