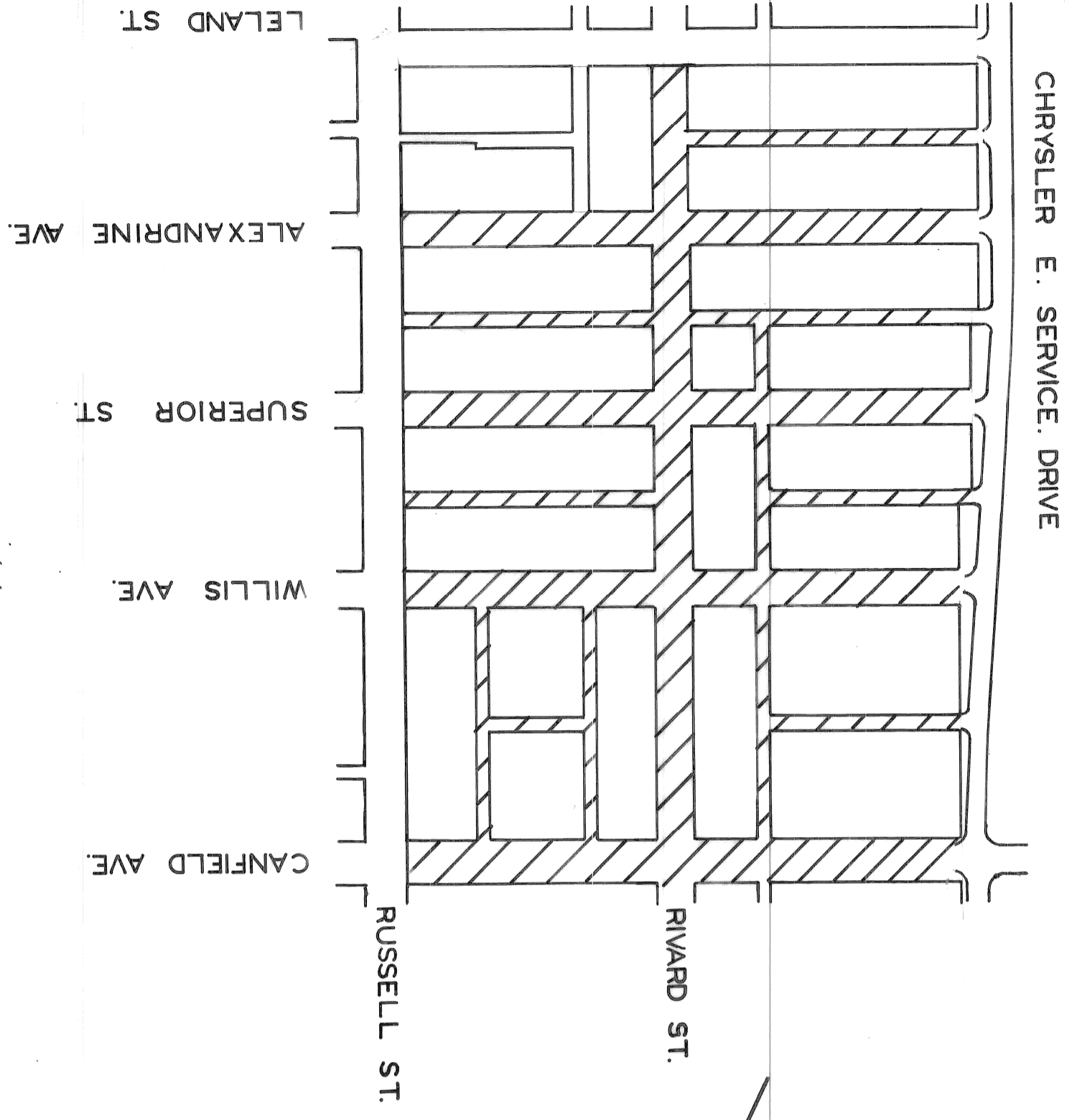


CITY OF DETROIT
 DEPARTMENT OF PUBLIC WORKS
 CITY ENGINEERS OFFICE
 PLANS FOR PROPOSED
 CANFIELD AVE. WIDENING, CHRYSLER TO RUSSELL,
 AND STREET AND ALLEY REMOVALS
 FOREST PARK REHABILITATION PROJECT NO. TWO N.D.P. MICH. A-4-2
 FOR
 COMMUNITY DEVELOPMENT COMMISSION



CONSTRUCTION AREA

- INDEX OF SHEETS
- 1. TITLE SHEET
 - 2. TYPICAL CROSS SECTION
 - 3-4. REMOVALS & UTILITIES
 - 5. CANFIELD PLAN & PROFILES
 - 6. STREET & ALLEY CLOSINGS
 - 7. WATER SYSTEM GENERAL NOTES
 - 8. WATER SYSTEM GENERAL PLAN
 - 9-13. WATER SYSTEM ALTERATIONS
 - 14. WATER SYSTEM MISC. DETAILS
 - 15. P.L.C. GENERAL INFORMATION
 - 16. P.L.C. GENERAL PLAN
 - 17. P.L.C. TRAFFIC SIGNALS
 - 18-31. P.L.C. DETAILS
 - 32. QUANTITY SHEET

AO 2184

PROJECT:
 CANFIELD AVE. WIDENING,
 CHRYSLER TO RUSSELL,
 AND STREET AND ALLEY
 REMOVALS; FOREST PARK
 REHAB. PROJECT NO. 2
 CONTRACT NO. PW. 6556

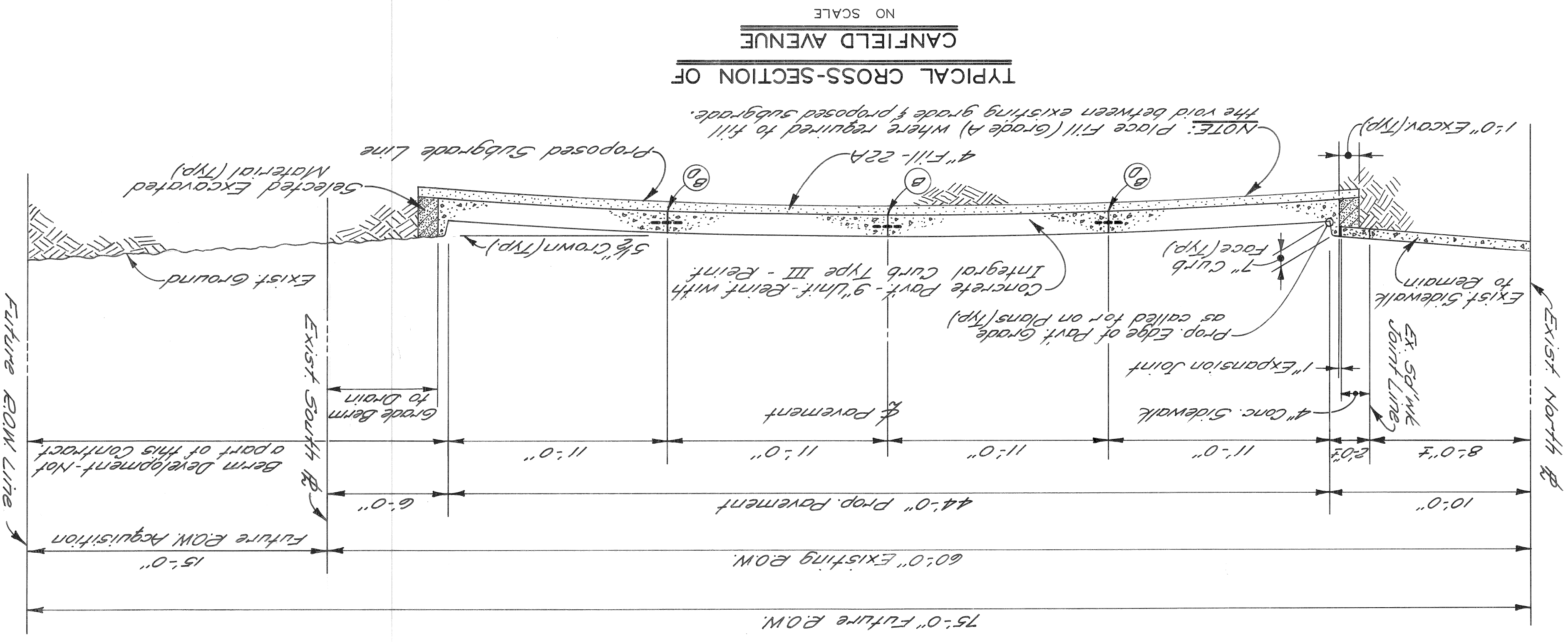
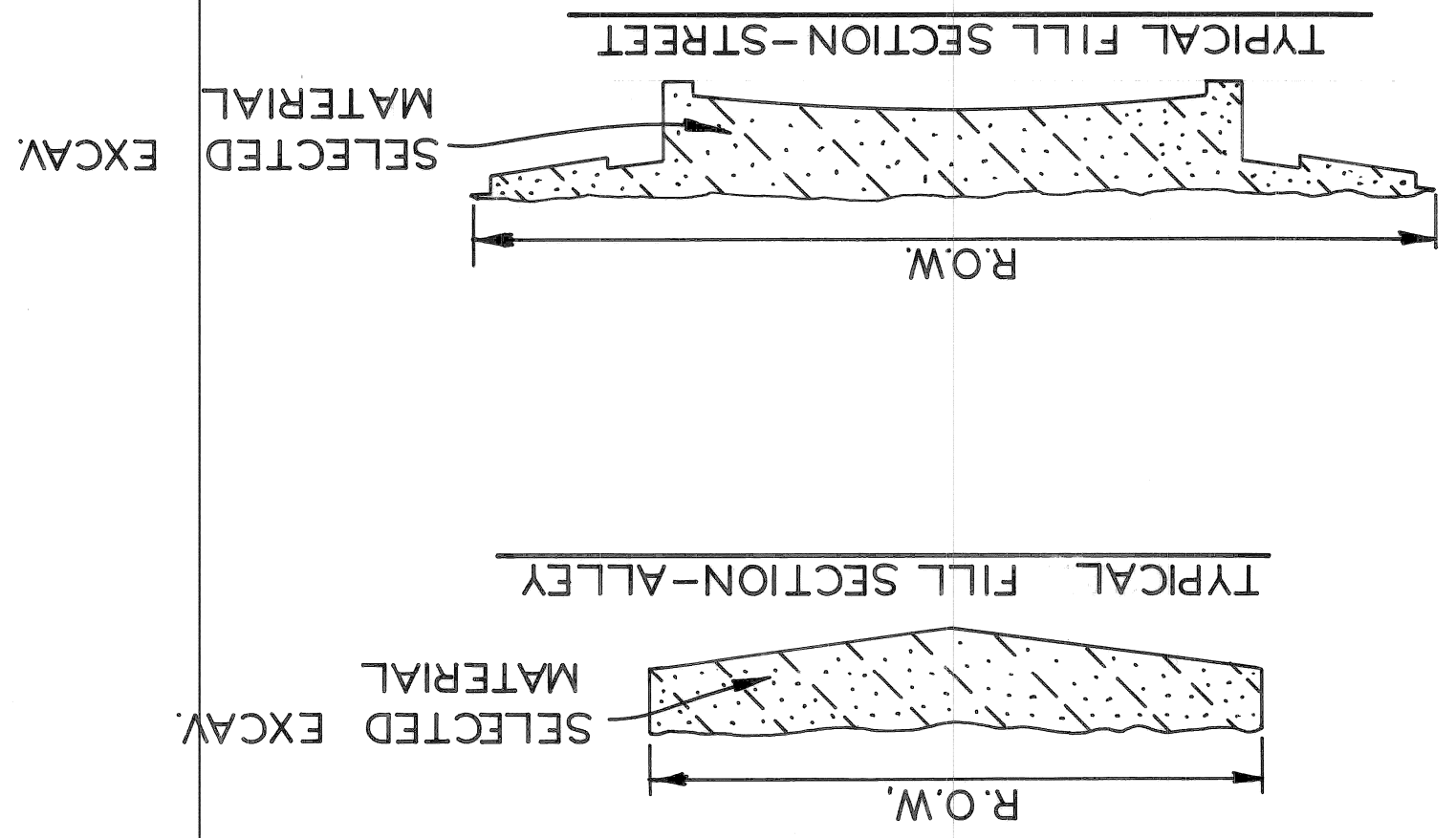
PLANS PREPARED BY
 DEPARTMENT OF PUBLIC WORKS
 CITY ENGINEERS OFFICE

RECOMMENDED FOR APPROVAL	R.C. Mendenhall P.E.	DATE	3-25-74
RECOMMENDED FOR APPROVAL	ENGINEER OF INSPECTION	DATE	3-25-74
RECOMMENDED FOR APPROVAL	HIGHWAY ENGINEER	DATE	3-25-74
APPROVED	ASSISTANT CITY ENGINEER	DATE	3-25-74
APPROVED	CITY ENGINEER	DATE	3-26-74

DATE 3 - 25 - 74 DRWG. NO. 1 OF 32

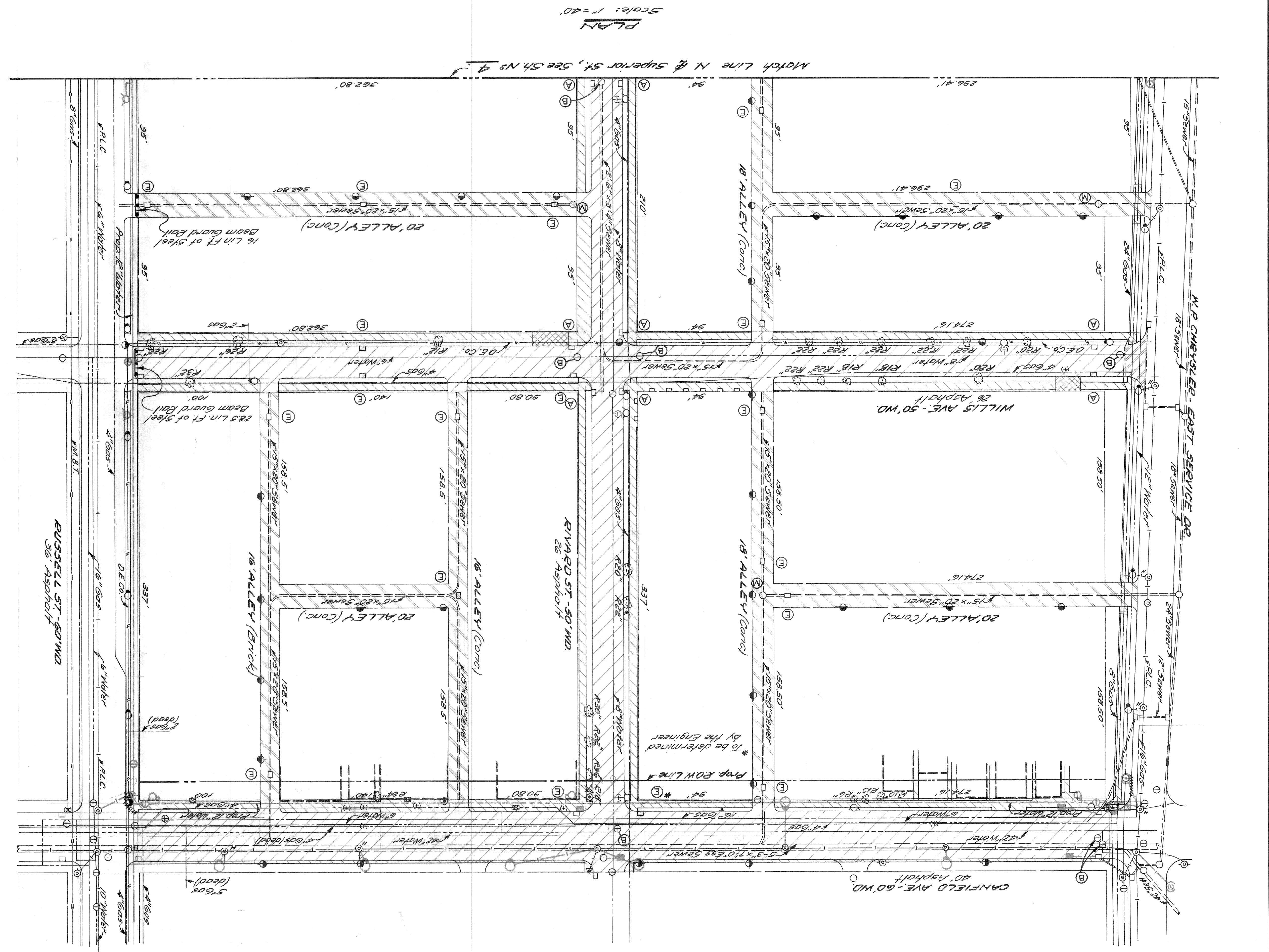
REVISIONS LOCATED BY COORDINATES ON SHEET		APPROVED: <i>[Signature]</i>	ENGINEER OF EXPRESSWAYS	CITY OF DETROIT	DEPARTMENT OF PUBLIC WORKS	CITY ENGINEERS OFFICE	FOR	COMMUNITY DEVELOPMENT COMMISSION
NO.	DESCRIPTION	DESIGNED BY	DRAWN BY	DESIGNED BY	TRACED BY	CHECKED BY	R.B.P.	
							M.A.P.	
DATE	NO.	ASSIGNMENT	CONTRACT NO.	SHEET NO.	FOREST PARK REHABILITATION PROJECT No 2			
3-25-74	2184		PW 6556	2 of 3	TYPICAL CROSS-SECTION			

BEFORE STARTING CONSTRUCTION — CONTRACTOR MUST CHECK WITH UTILITIES FOR LOCATIONS OF EXISTING STRUCTURES WHETHER OR NOT INDICATED ON PLANS



JOINT LEGEND

- ⓑ Longitudinal Bulkhead Construction Joint, according to C&D Standard Drawing.
- ⓓ Longitudinal Lane Tie Joint (with Tie Bars), according to C&D Standard Drawing.
- ⓔ Optional, B or D.

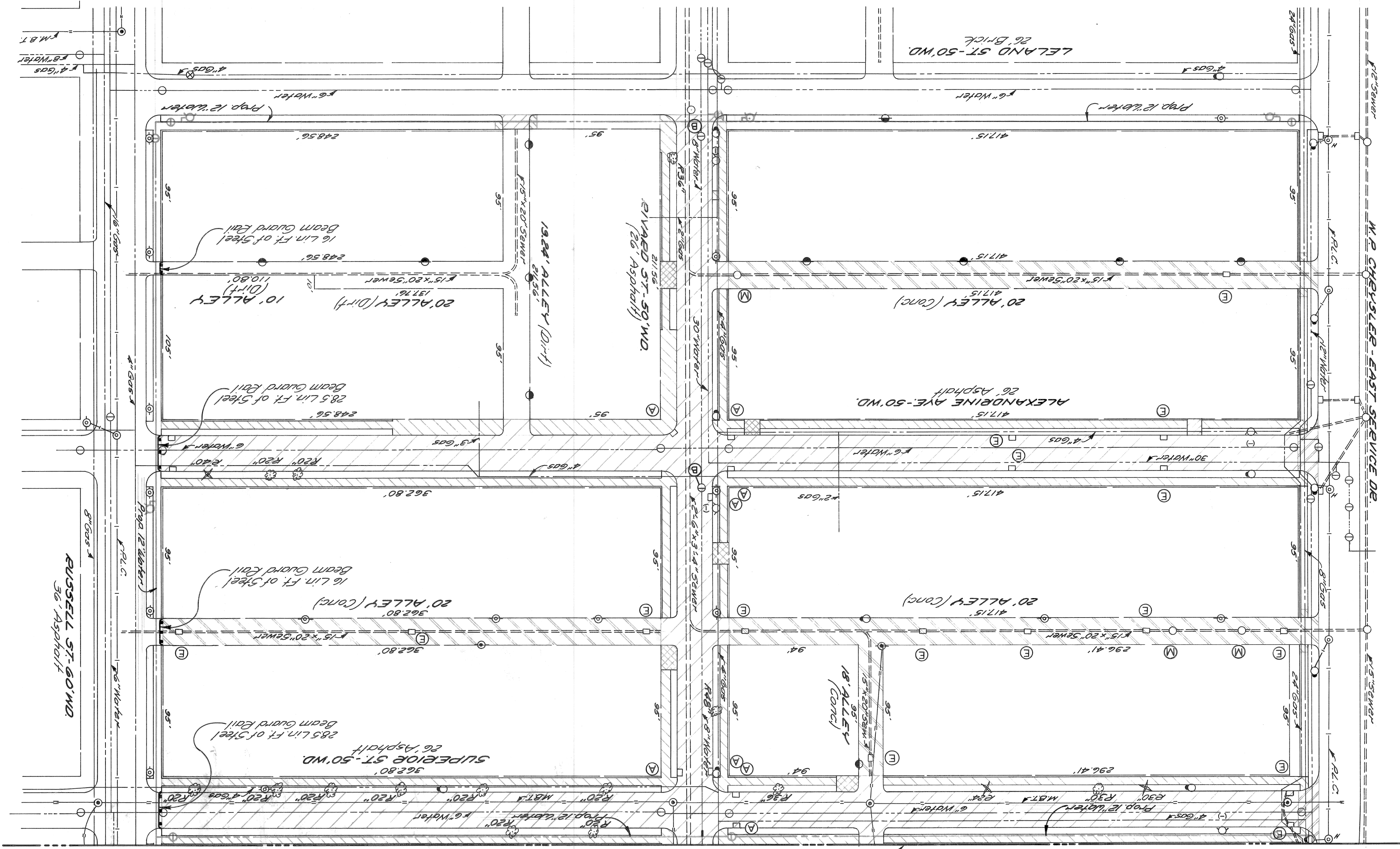


The removal of Willis, per Russell & deleted from this contract due to people will bring them. The note should remain here until the "Go-Bucks" are added to these tracings. Mily/VanHoe/PP 11-14-78

Approx 1421 cu yds. of Selected Excavated Material is needed for backfill on this sheet.

REVISIONS LOCATED BY COORDINATES ON SHEET		DESIGNED BY	APPROVED:	CITY OF DETROIT DEPARTMENT OF PUBLIC WORKS CITY ENGINEERS OFFICE FOR COMMUNITY DEVELOPMENT COMMISSION	REMOVAL PLAN, LELAND ST TO N. SUPERIOR ST.	DATE
NO.	DESCRIPTION	DATE	ENGINEER OF EXPRESWAYS			3-25-74
NO.	DESCRIPTION	DATE	DESIGNED BY	CITY OF DETROIT DEPARTMENT OF PUBLIC WORKS CITY ENGINEERS OFFICE FOR COMMUNITY DEVELOPMENT COMMISSION	FOREST PARK REHABILITATION PROJECT No 2	ASSIGNMENT
NO.	DESCRIPTION	DATE	DRAWN BY			2184
NO.	DESCRIPTION	DATE	TRACED BY	CITY OF DETROIT DEPARTMENT OF PUBLIC WORKS CITY ENGINEERS OFFICE FOR COMMUNITY DEVELOPMENT COMMISSION	FOREST PARK REHABILITATION PROJECT No 2	CONTRACT NO.
NO.	DESCRIPTION	DATE	CHECKED BY			PW 6556
NO.	DESCRIPTION	DATE	REFERENCE DRAWINGS	CITY OF DETROIT DEPARTMENT OF PUBLIC WORKS CITY ENGINEERS OFFICE FOR COMMUNITY DEVELOPMENT COMMISSION	FOREST PARK REHABILITATION PROJECT No 2	SHEET NO.
NO.	DESCRIPTION	DATE	REFERENCE DRAWINGS			4
NO.	DESCRIPTION	DATE	REFERENCE DRAWINGS	CITY OF DETROIT DEPARTMENT OF PUBLIC WORKS CITY ENGINEERS OFFICE FOR COMMUNITY DEVELOPMENT COMMISSION	FOREST PARK REHABILITATION PROJECT No 2	OF SHEETS
NO.	DESCRIPTION	DATE	REFERENCE DRAWINGS			32

PLAN
Scale: 1"=40'

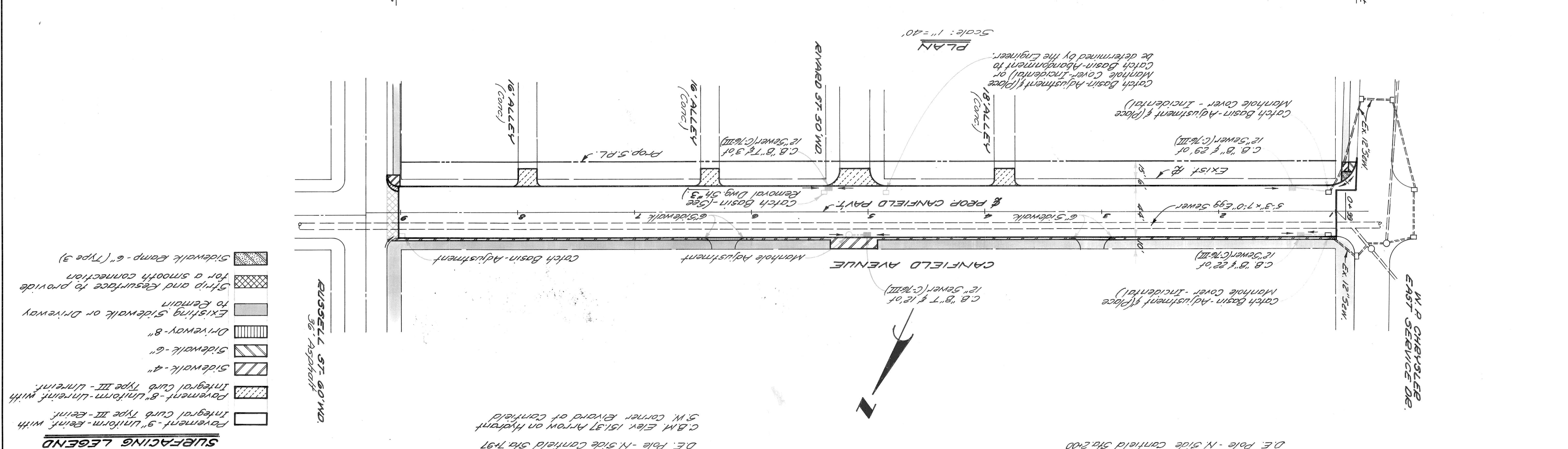
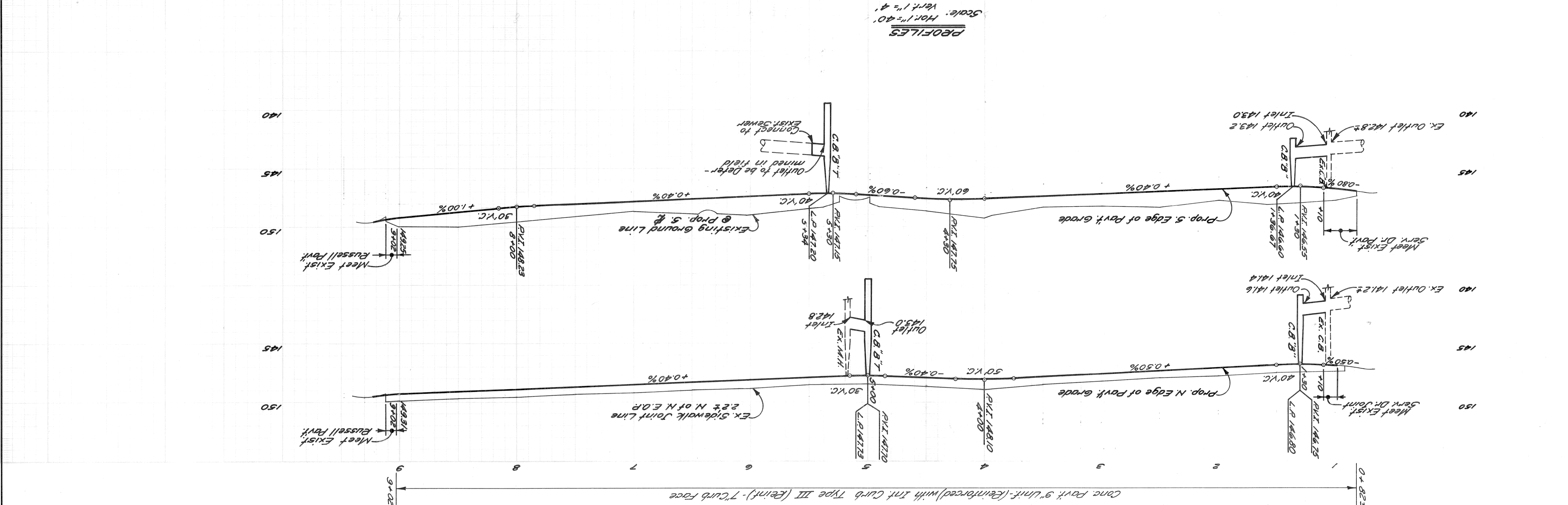


Match line N. R. Superior St, See 5th No 3.

Approx. 5,831 cu. yds. of selected
Excavated Material is needed
for backfill on this sheet.

- REMOVAL LEGEND**
- Street Pavement Removal - Reinforced
 - Street Pavement Removal - Unreinforced
 - Alley Pavement Removal
 - Sidewalk Removal
 - Driveway Removal
 - Tree Removal
 - Stump Removal
 - Catch Basin - Abandonment
 - Catch Basin - Special Abandonment
 - Manhole (Sewer) Abandonment
 - Manhole - Adjustment

DATE 3-25-74		INDEXED		ASSIGNMENT NO. 2184		CONTRACT NO. PW 6556		SHEET 5 OF 32 SHEETS	
PLAN & PROFILES CANFIELD AVE.-CHRYSLER TO RUSSELL		INDEXED		FOREST PARK REHABILITATION PROJECT No 2		PAVEMENT REMOVAL & CONSTRUCTION & UTILITY RELOCATION		CITY OF DETROIT DEPARTMENT OF PUBLIC WORKS FOR CITY ENGINEERS OFFICE COMMUNITY DEVELOPMENT COMMISSION	
REVISIONS	DESCRIPTION	DRN	CHK'D	AP'D	DATE	FINAL	CHECKED	REVIEW	APPROVED BY
									M.A.P. R.B.P.
									M.A.P. R.B.P.
									M.A.P. R.B.P.
									M.A.P. R.B.P.



SURFACING LEGEND

[Pattern]	Pavement - 9" Uniform-Rein. with Integral curb Type III-Rein.
[Pattern]	Pavement - 8" Uniform-Linreint. with Integral curb Type III-Linreint.
[Pattern]	Sidewalk - 4"
[Pattern]	Sidewalk - 6"
[Pattern]	Driveway - 8"
[Pattern]	Existing Sidewalk or Driveway to Remain
[Pattern]	Strip and Resurface to provide for a smooth connection
[Pattern]	Sidewalk Ramp - 6" (Type 3)

C.B.M. Elev 149.13 R.E. Spk. on D.E. Pole - N. Side Canfield Sta. 200
 C.B.M. Elev 150.38 R.E. Spk. on S.W. corner Elyard of Canfield
 C.B.M. Elev 151.37 Arrow on Hydrant
 RUSSELL ST. 50' W.D. 56 Asphalt

SHEET 6 OF 32 CONTRACT NO. P.W. 6556 ASSIGNMENT No. 2184 DATE 3-25-74	FOREST PARK REHABILITATION PROJECT No 2 PAVEMENT REMOVAL & CONSTRUCTION & UTILITY RELOCATION STREET AND ALLEY CLOSINGS	CITY OF DETROIT DEPARTMENT OF PUBLIC WORKS FOR CITY ENGINEERS OFFICE COMMUNITY DEVELOPMENT COMMISSION	DESIGNED BY M.A.P.	CHECKED BY R.B.P.	REVISIONS LOCATED BY COORDINATES ON SHEET
			DRAWN BY M.A.P.	TRACED BY	

