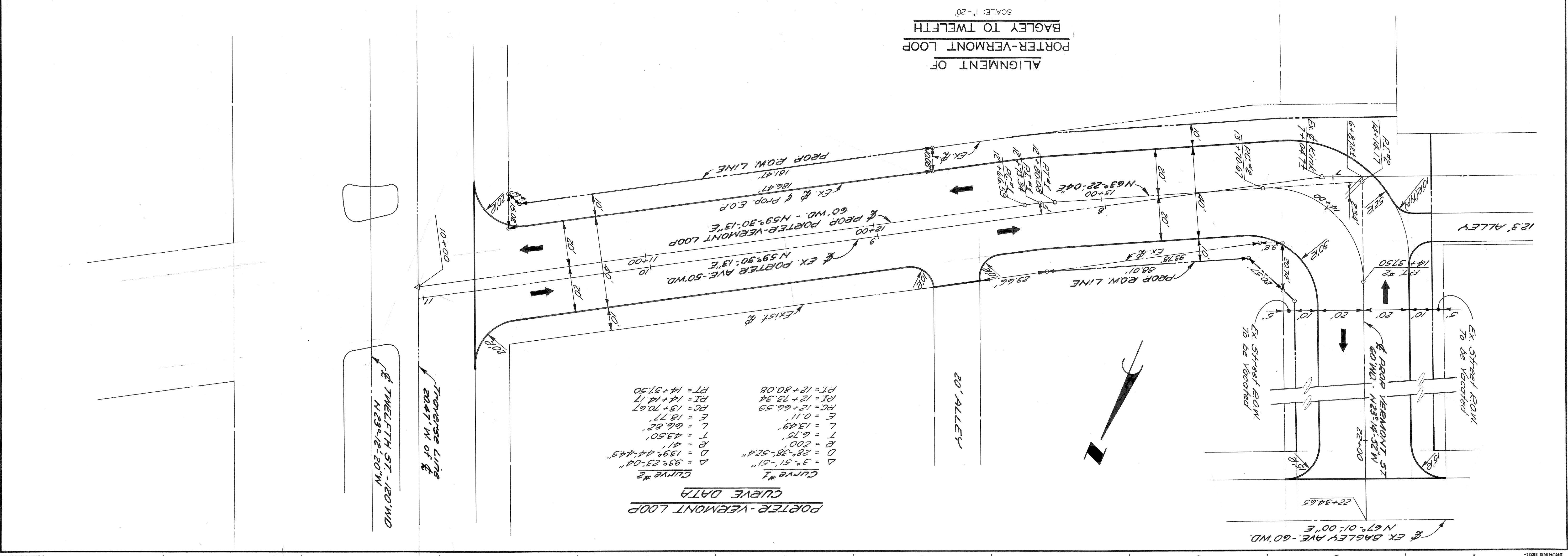
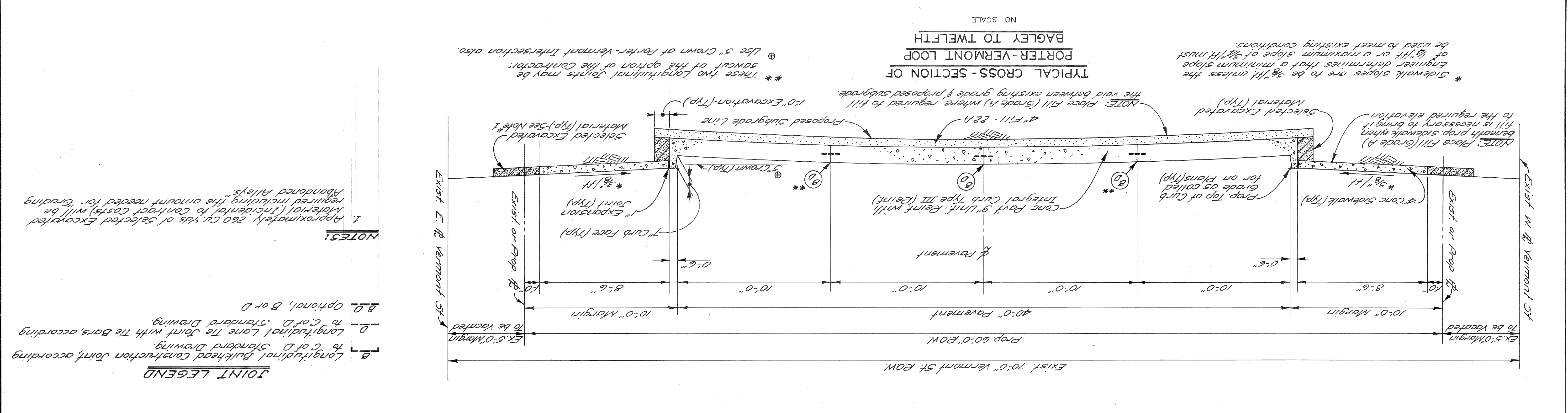


DATE 11-30-73		ALIGNMENT AND TYPICAL CROSS-SECTION		COMMUNITY DEVELOPMENT COMMISSION		CITY OF DETROIT		APPROVED: <i>Alan S. [Signature]</i>		DESIGNED BY: <i>M.A.P.</i>		DRAWN BY: <i>M.A.P.</i>		CHECKED BY: <i>R.H.C.</i>		REVISIONS LOCATED BY COORDINATES ON SHEET	
ASSIGNMENT NO. 1865 (A)		PAVEMENT CONSTRUCTION & UTILITY RELOCATION		FOR CITY ENGINEERS OFFICE		DEPARTMENT OF PUBLIC WORKS		ENGINEER OF EXPRESSWAYS		REVISIONS		REVISIONS		REVISIONS		REVISIONS	
CONTRACT NO. RW.6551		PORTER-VERMONT LOOP		CITY OF DETROIT		DEPARTMENT OF PUBLIC WORKS		ENGINEER OF EXPRESSWAYS		REVISIONS		REVISIONS		REVISIONS		REVISIONS	
SHEET 2 OF 44		WEST SIDE INDUSTRIAL REHABILITATION PROJECT NO. 2		CITY OF DETROIT		DEPARTMENT OF PUBLIC WORKS		ENGINEER OF EXPRESSWAYS		REVISIONS		REVISIONS		REVISIONS		REVISIONS	



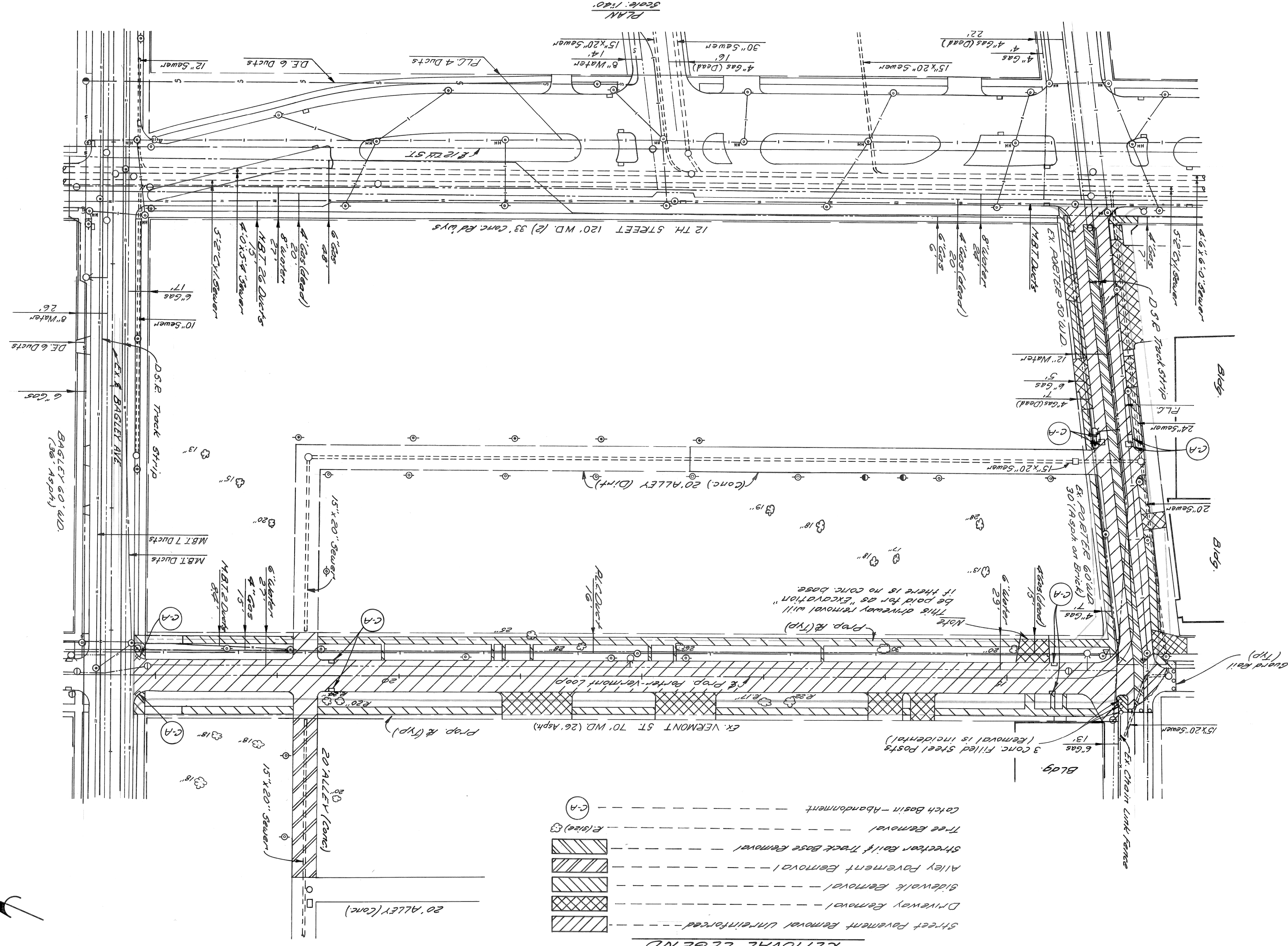
NO.	DATE	DESCRIPTION

DATE 11-30-73	ASSIGNMENT NO. 1865(B)
CONTRACT NO. PW.6551	CONTRACT NO. PW.6551
SHEET 3 OF 4 SHEETS	

CITY OF DETROIT
DEPARTMENT OF PUBLIC WORKS
FOR CITY ENGINEERS OFFICE
COMMUNITY DEVELOPMENT COMMISSION

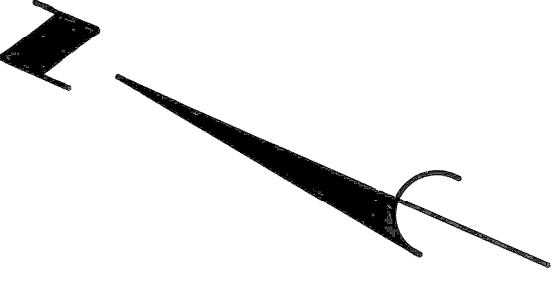
APPROVED: *[Signature]*
ENGINEER OF EXPRESSWAY
M.S.
R.R.C.

WEST SIDE INDUSTRIAL REHABILITATION PROJECT NO. 2
PORTER - VERMONT LOOP
PAVEMENT CONSTRUCTION & UTILITY RELOCATION
REMOVALS, TWELFTH ST. TO BAGLEY AVE.



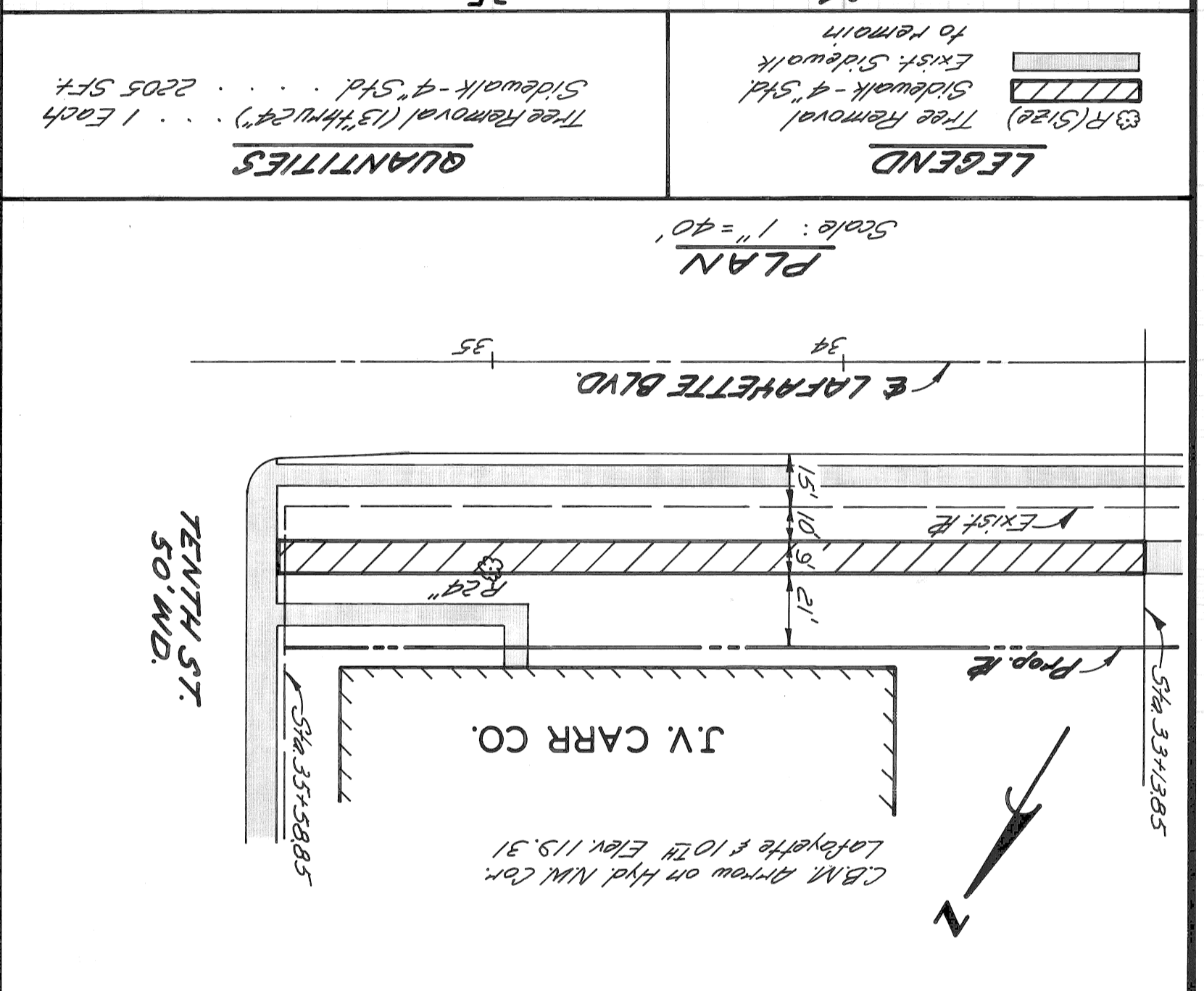
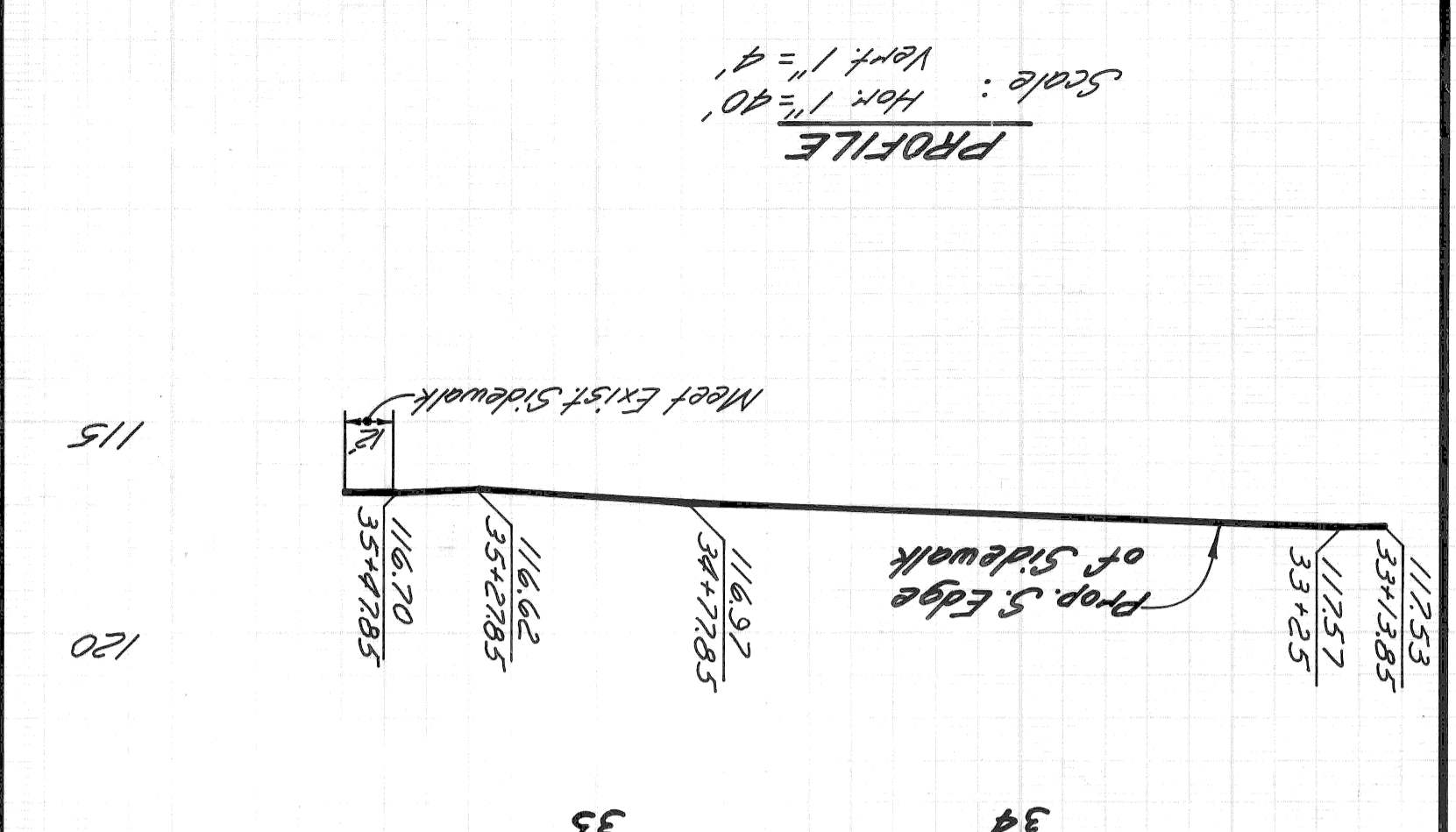
- REMOVAL LEGEND**
- Street Pavement Removal Unreinforced
 - Driveway Removal
 - Sidewalk Removal
 - Alley Pavement Removal
 - Streetcar Rail & Track Base Removal
 - Tree Removal
 - Catch Basin - Abandonment

Note: This driveway removal will be paid for as "excavation" if there is no conc. base.
Prop. R (Typ.)
30" (9 sq ft on B-10)
EX. PORTER 60' WID.
EX. PORTER 30' WID.
EX. CHAIN LINK FENCE
EX. VERMONT ST. 70' WID. (26' ASPH.)
EX. VERMONT ST. 20' WID. (26' ASPH.)
EX. PORTER 60' WID. (26' ASPH.)



Y
A
B
C
D
E
F
G
11
10
9
8
7
6
5
4
3
2
1
11
10
9
8
7
6
5
4
3
2
1

11
10
9
8
7
6
5
4
3
2
1
11
10
9
8
7
6
5
4
3
2
1



LEGEND

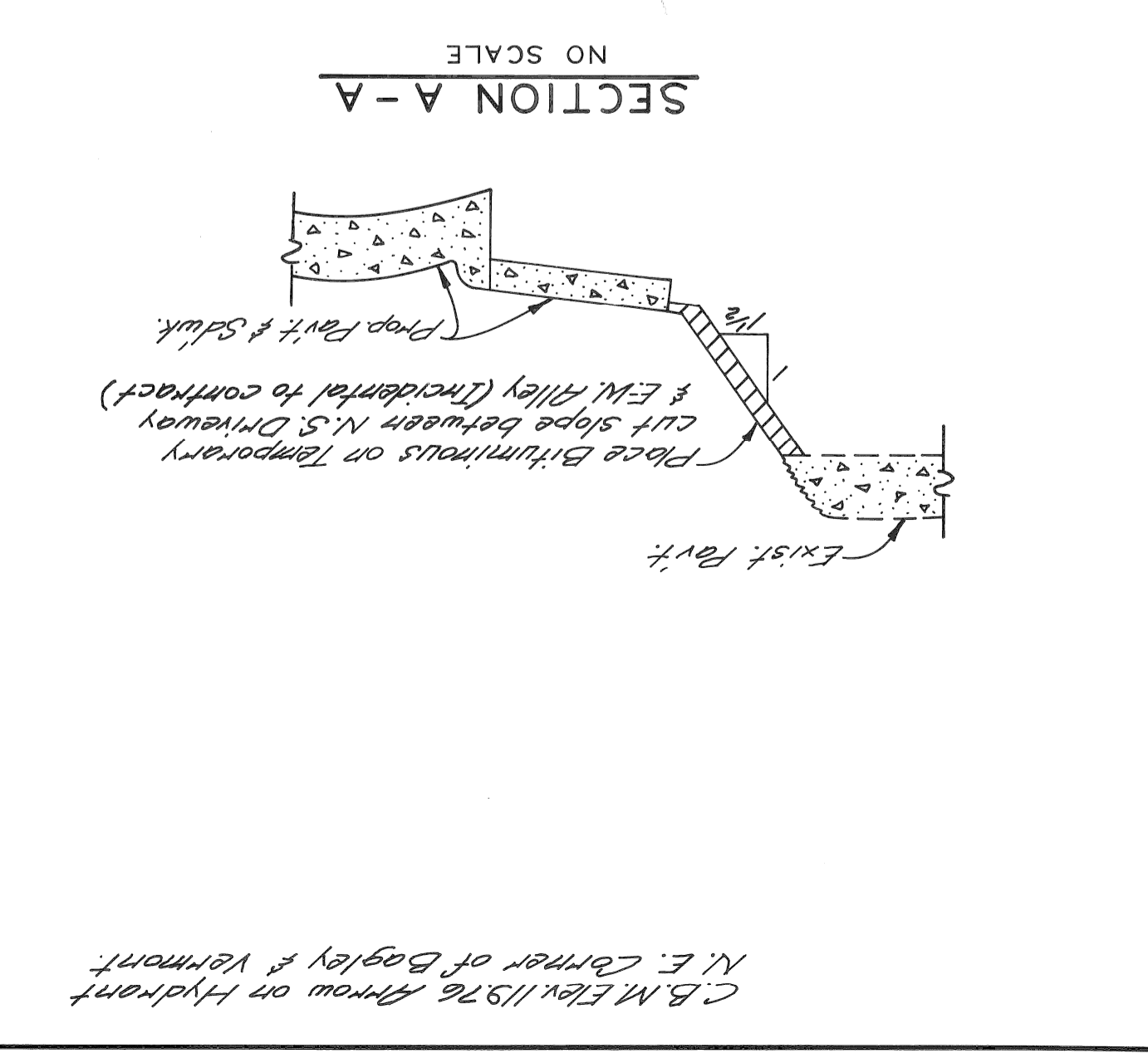
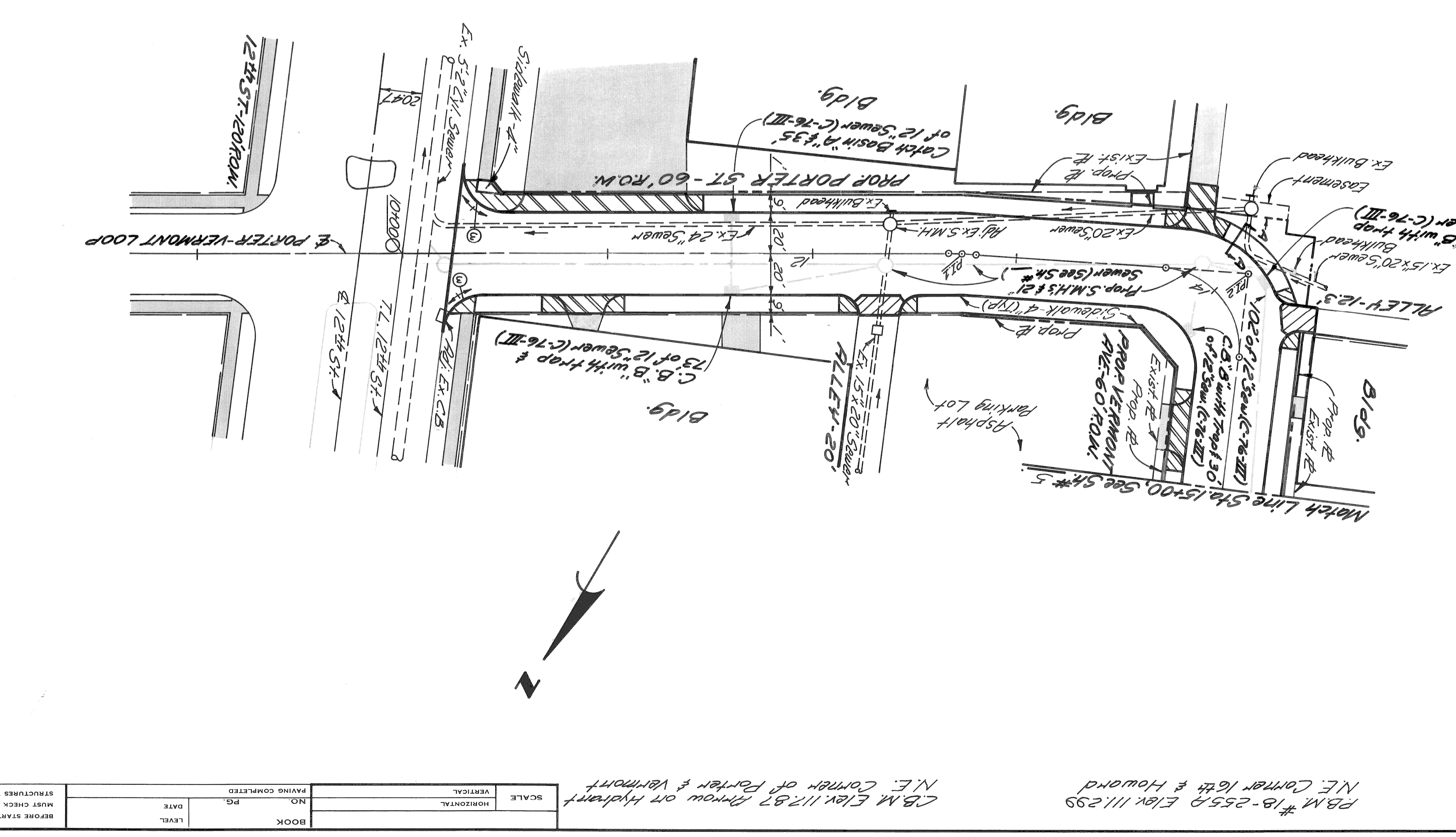
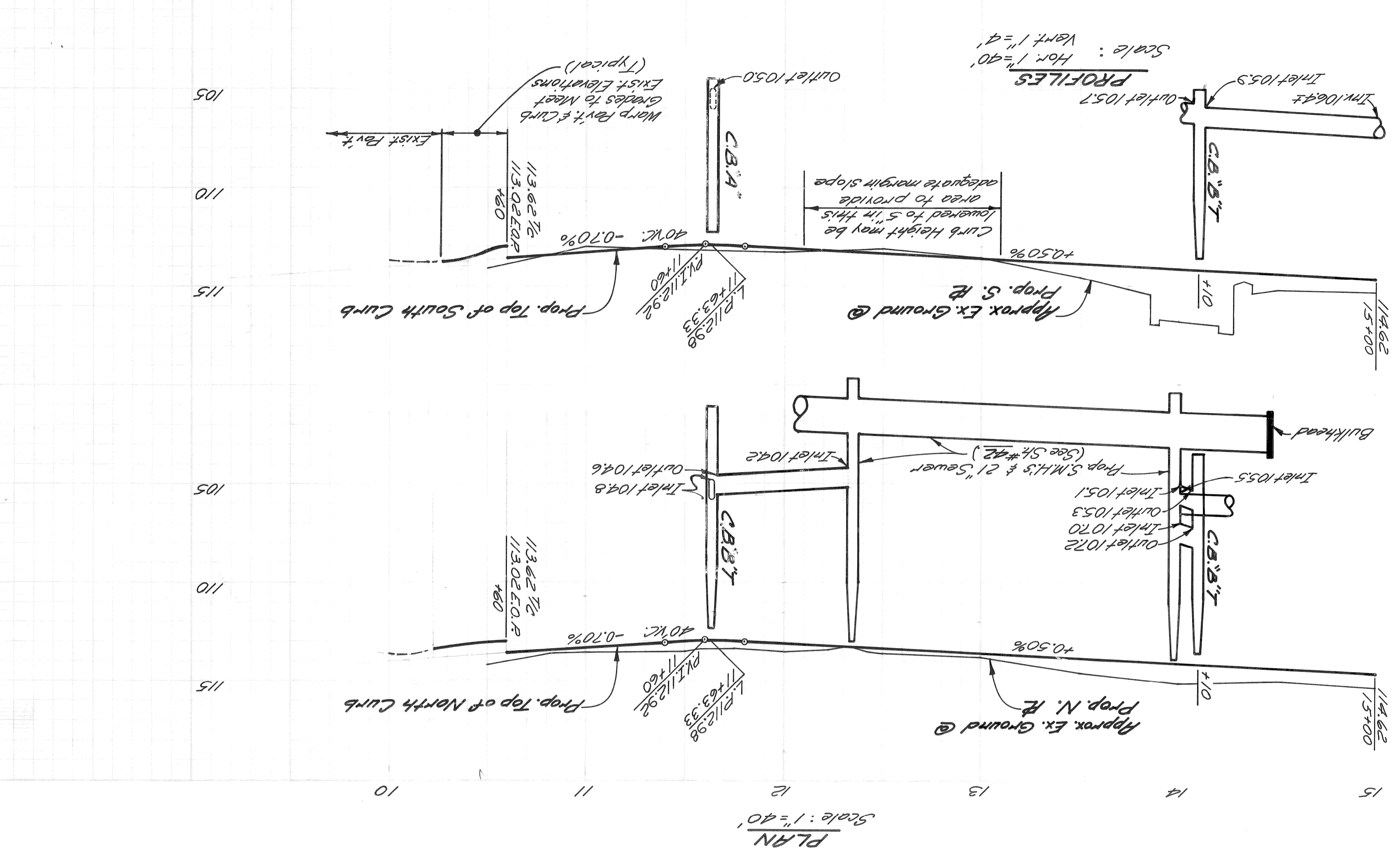
	Exist. Sidewalk or Driveway to remain
	Strip & Adjust Asphalt Surface
	Comp. Pavt. - 9" Limit (Reinf.) with Type III Curb - Integral (Reinf.)
	Comp. Pavt. - 9" Limit (Non-Reinf.)
	Sidewalk - 6"
	Driveway - 8" Limit (Commercial)
	Sidewalk Ramps - Types 1, 2 or 3
	(See Special Detail Sheet)

NOTES:

- For Alignment, See SH # 2
- For Utility adjustments or reconstructions, See SH # 6
- For Typical Driveway Details, See SH # 7

QUANTITIES

Tree Removal (13" thru 24") ... 1 Each
Sidewalk - 4" SHd ... 2205 SF4

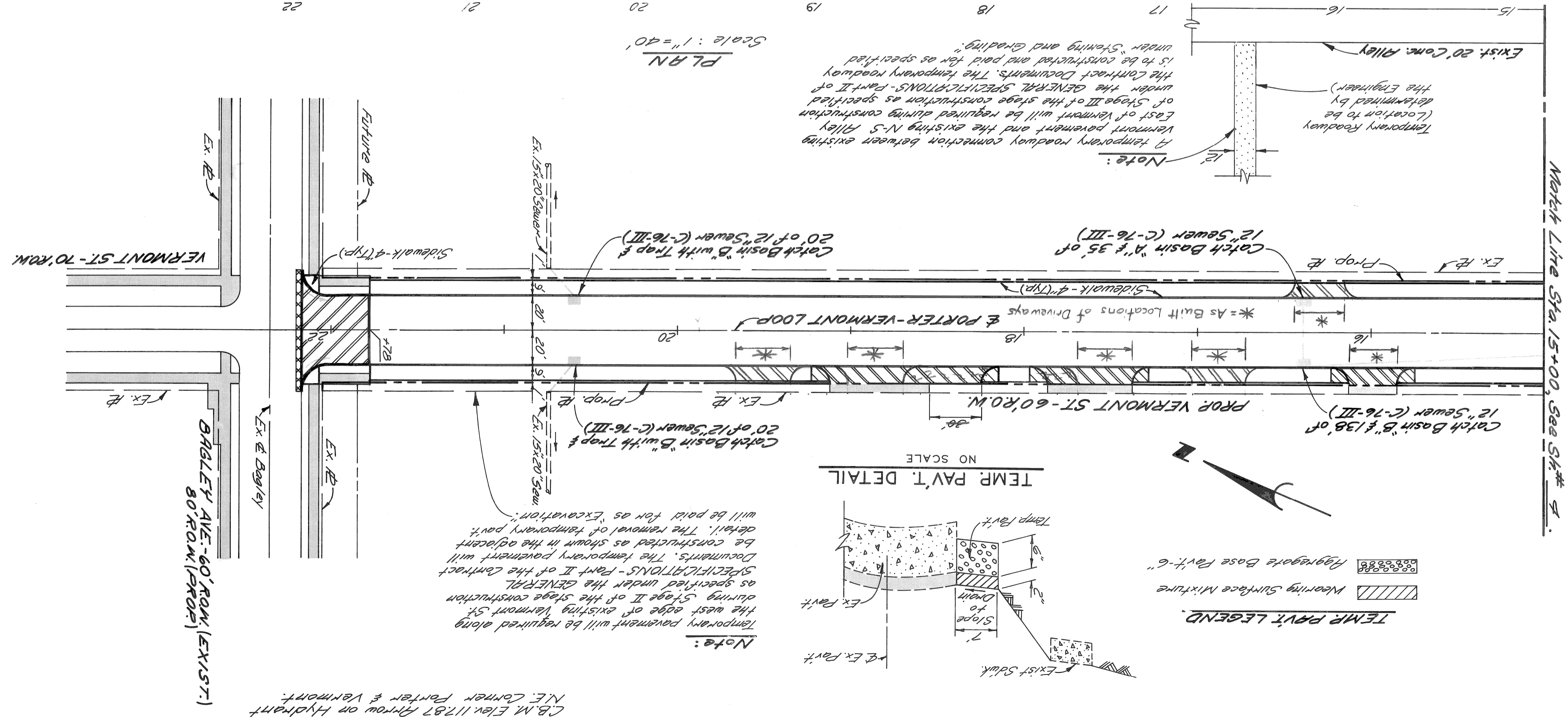
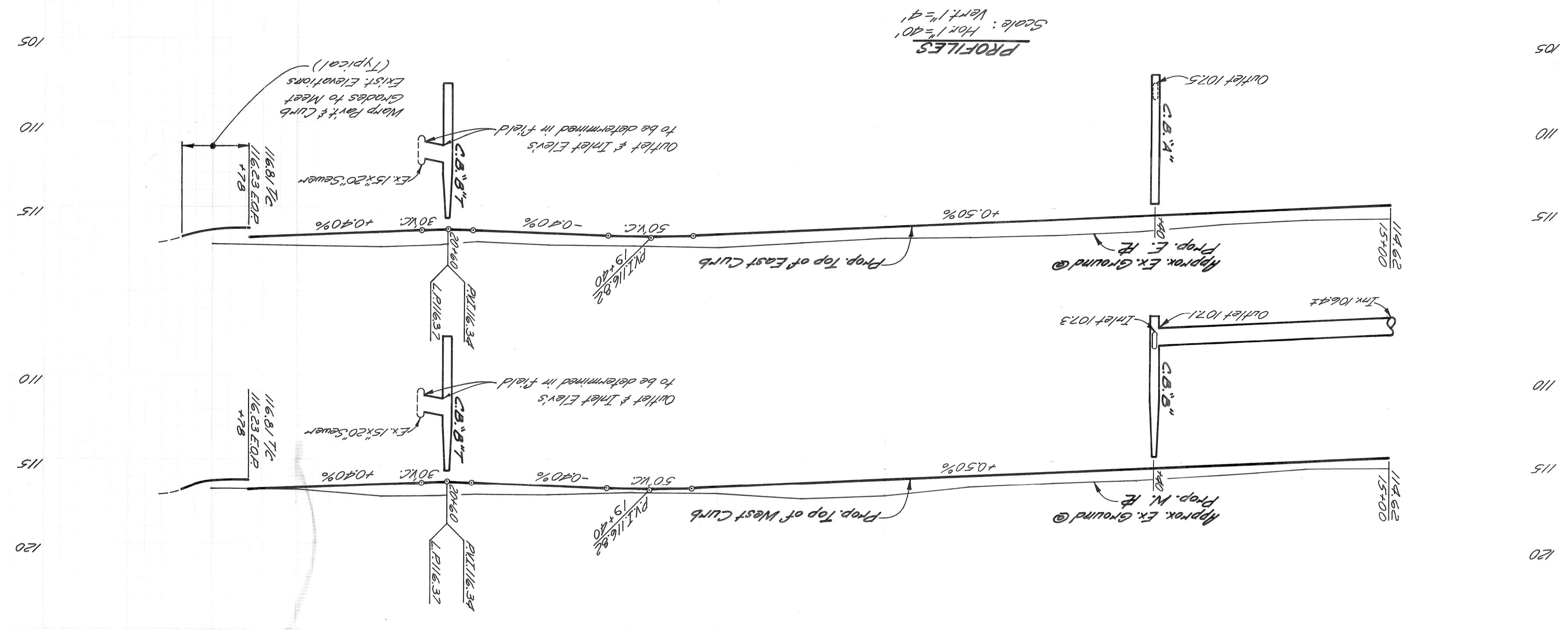


DATE 11-30-73	INDEXED
ASSIGNMENT NO. A.O.1865 (B)	NO.
CONTRACT NO. PW.6551	NO.
SHEET 5 OF 44 SHEETS	INDEXED

WEST SIDE INDUSTRIAL REHABILITATION PROJECT NO.2
 PORTER - VERMONT LOOP
 PAVEMENT CONSTRUCTION & UTILITY RELOCATION

CITY OF DETROIT
 DEPARTMENT OF PUBLIC WORKS
 CITY ENGINEERS OFFICE
 FOR
 COMMUNITY DEVELOPMENT COMMISSION

APPROVED BY: <i>[Signature]</i>	ENGINEER OF EXPRESSEWAYS
CHECKED BY: J.R.D. R.A.C.	GRADE
BY: J.R.D. R.A.C.	PLAN
REVISIONS	DESCRIPTION
1	Add 30' of driveway to existing drive on west side of Vermont @ Sta. 15+83.2



LEGEND

- Strip & Adjust Asphalt Surface
- Exist Sidewalk or Driveway to remain
- Comp. Pavt. - 9" Limit (Integral Reinft) with Type III Curb - Integral (Non-Reinft)
- Comp. Pavt. - 8" Limit (Commercial)
- Sidewalk - 6"
- Comp. Pavt. - 9" Limit (Non-Reinft)
- Comp. Pavt. - 8" Limit (Non-Reinft) with Type III Curb - Integral (Non-Reinft)

NOTES:

- For Alignment, See Sht. # 2.
- For Utility adjustments or reconstructions, See Sht. # 6.
- For Typical Driveway Details, See Sht. # 7.