

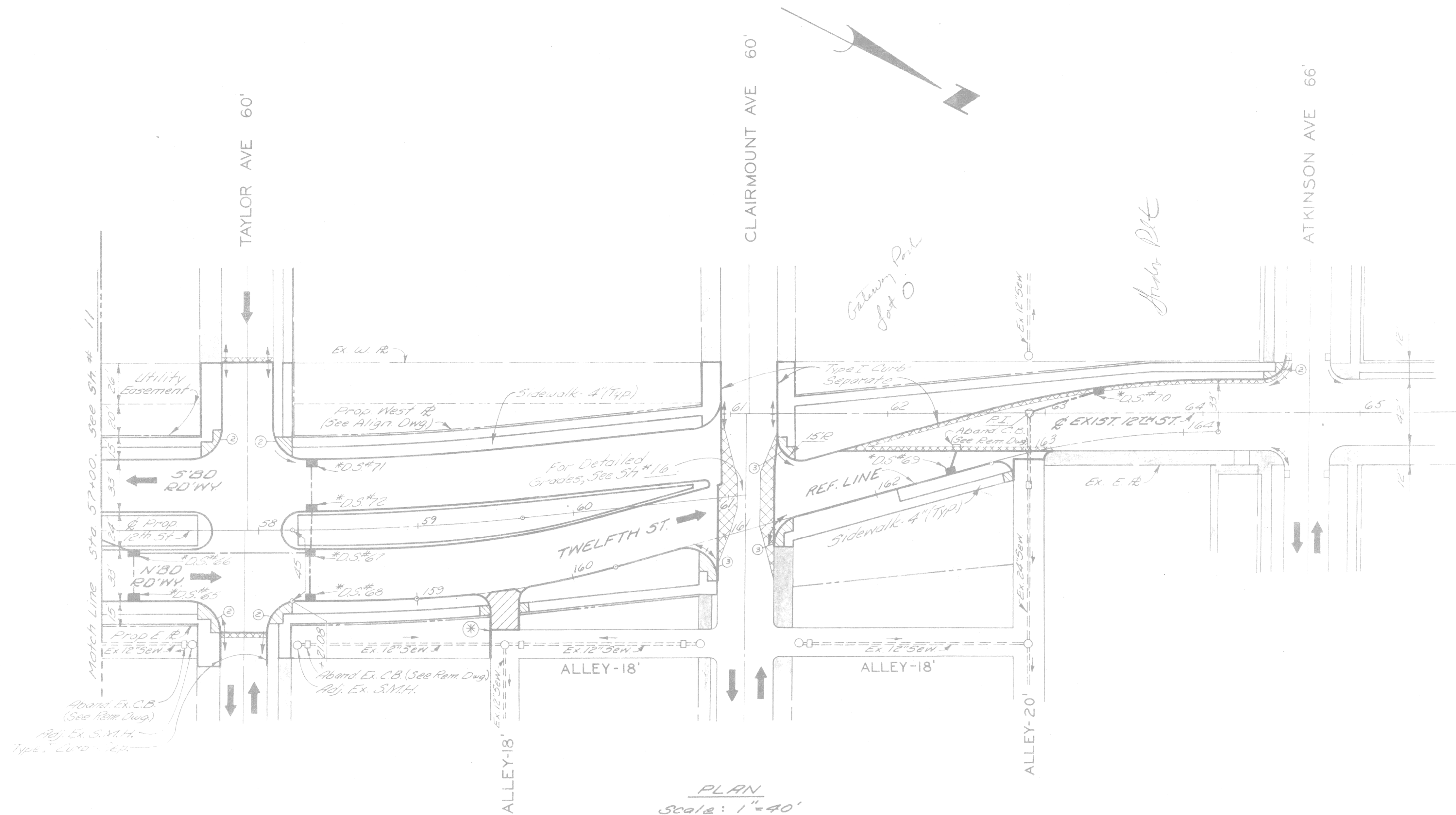
C.B.M. #5 Elev 156.48 Arrow on Hydrant
N.W. Corner Twelfth St of Taylor Ave.

C.B.M. #16 Elev 157.50 Arrow on Hydrant
S.W. Corner Twelfth St of Clairmount Ave

P.B.M. # 32-251 Elev 154.99 NE
Corner Twelfth St of Atkinson Ave

LEGEND

- Strip and Adjust Asphalt Surface
- Concrete Pavement, 3" Uniform, Non Reinforced
- Sidewalk - 6" (Sidewalk Ramp areas are paid for separately)
- Existing Sidewalk or Driveway to Remain
- Concrete Pavement 3" Uniform, Reinforced with Type II Curb Integral (Reinforced)
- Sidewalk Ramps (Ford) - Types 1, 2 or 3.



PLAN
Scale: 1"=40'

NOTES:

1. All proposed street return shall be 20' unless otherwise noted.
2. For utility adjustments or reconstruction, see Sht #13.
3. For Alignment, see Sht #4.

⊛ See Detail, Sht #9.

* D.S. refers to Drainage Structure with Sewer as shown in the table below.

DRAINAGE STRUCTURE NUMBER	TYPE OF STRUCTURE	WITH OR WITHOUT TRAP	SEW. LENGTH & TYPE LEAVING D.S.		COMMENTS
			LENGTH (F.T.)	SIZE (IN.) CLASS	
65	C.B.'A'	Without	28	12 C-16 III	
66	C.B.'B'	With	20	12 "	
67	C.B.'B'	Without	108	12 "	With Sump
68	C.B.'A'	"	28	12 "	
69	C.B.'B'	With	12	12 "	
70	C.B.'B'	"	43	12 "	All Sewer is Sewer Under Pav't
71	C.B.'B'	Without	28	12 "	
72	C.B.'B'	"	22	12 "	

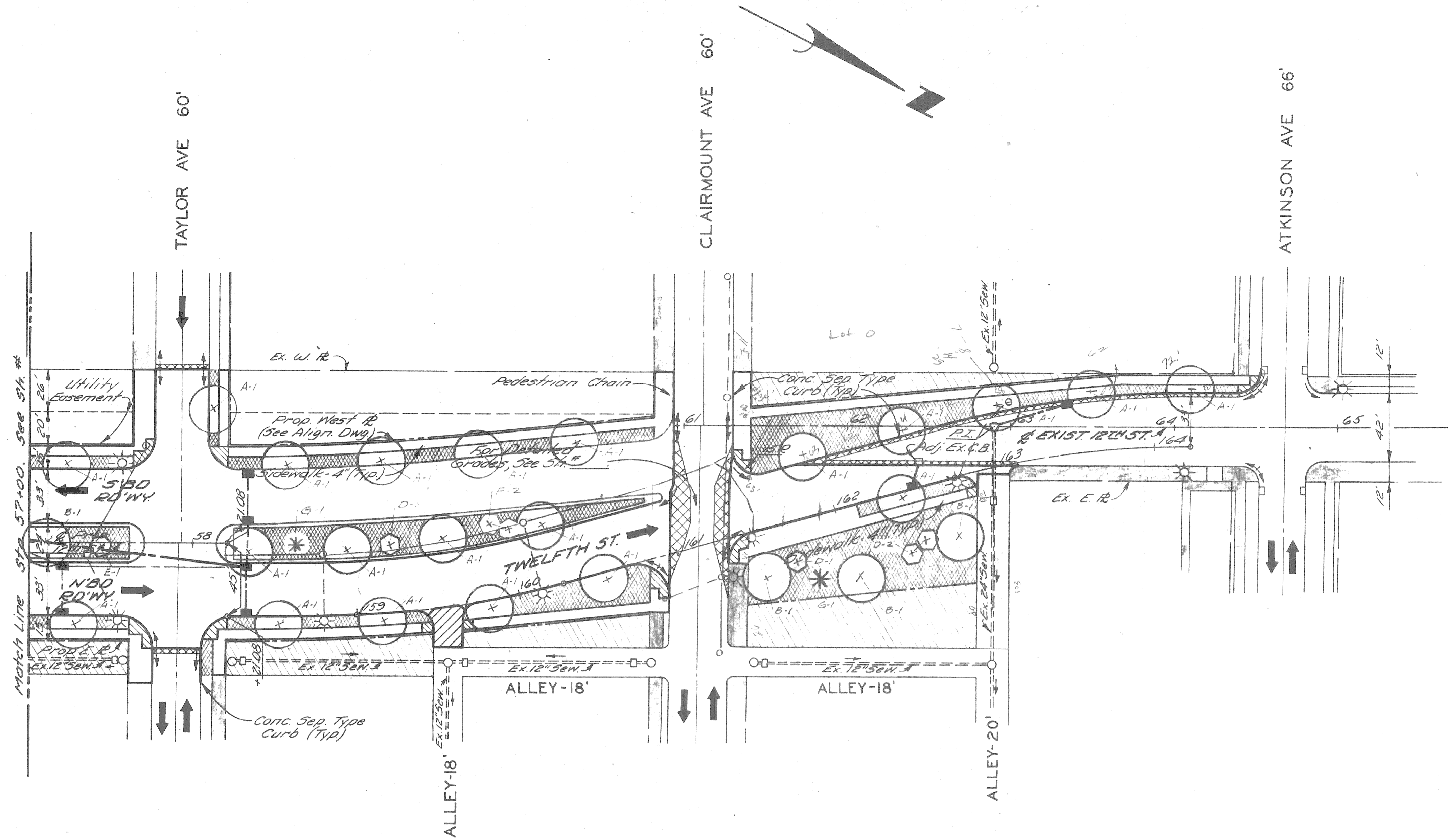
⊕ Consists of 12" Sewer to Match Line only

DESIGNED BY M. S.	APPROVED: <i>[Signature]</i> ENGINEER OF EXPRESSWAYS	CITY OF DETROIT DEPARTMENT OF PUBLIC WORKS CITY ENGINEERS OFFICE FOR COMMUNITY DEVELOPMENT COMMISSION	TWELFTH STREET WIDENING EUCLID AVE. TO ATKINSON.	SHEET 13 OF 74 SHEETS
TRACED BY CHECKED BY R. A. C.			PLAN, STA 57+00 TO ATKINSON	CONTRACT No. P.W.6549 ASSIGNMENT No. A.O.2091 DATE 2-18-74

C.B.M. #15 Elev. 156.48 Arrow on Hydrant
N.W. Corner Twelfth St. at Taylor Ave.

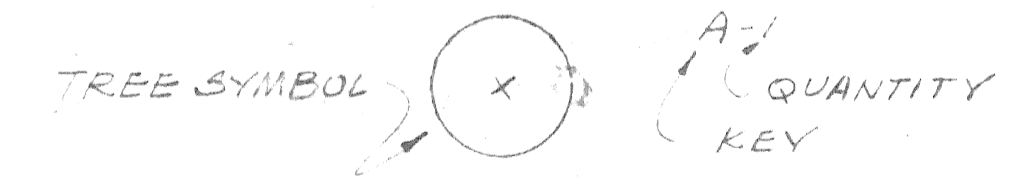
C.B.M. #16 Elev. 157.50 Arrow on Hydrant
S.W. Corner Twelfth St. at Clairmount Ave.

P.B.M. # 32-251 Elev. 154.99 NE.
Corner Twelfth St. at Atkinson Ave.



- NOTES:**
1. All proposed street return radii are 20' unless otherwise noted
 2. For utility adjustments or reconstruction, See 5th.
 3. For Alignment, See 5th.

PLAN
Scale 1"=40'



PLANT MATERIALS LEGEND

KEY	PLANT NAME
A	GREENSPIRE LINDEN
B	KENTUCKY COFFEE TREE
C	NORWAY MAPLE
D	JAPANESE FLOWERING CRABAPPLE
E	SCHIEDECKER CRABAPPLE
F	WASHINGTON HAWTHORNE
G	COLORADO SPRUCE

REFERENCE DRAWINGS DESIGNED BY <i>wjg</i> DRAWN BY TRACED BY CHECKED BY <i>E.H. VALL</i>		APPROVED: ENGINEER OF EXPRESSWAYS		CITY OF DETROIT DEPARTMENT OF PUBLIC WORKS CITY ENGINEERS OFFICE FOR COMMUNITY DEVELOPMENT COMMISSION			TWELFTH STREET WIDENING EUCLID TO ATKINSON PLAN, LANDSCAPE CONSTRUCTION			SHEET <u>23</u> OF <u>74</u> SHEETS CONTRACT No. P.W.6549 ASSIGNMENT No. A.O.2091 DATE 2-18-74	
23/C-6 ADD 5 BC 15TH ALT LANDS. DEV. 1970 COORD. DESCRIPTION REVISIONS LOCATED BY COORDINATES ON SHEET											