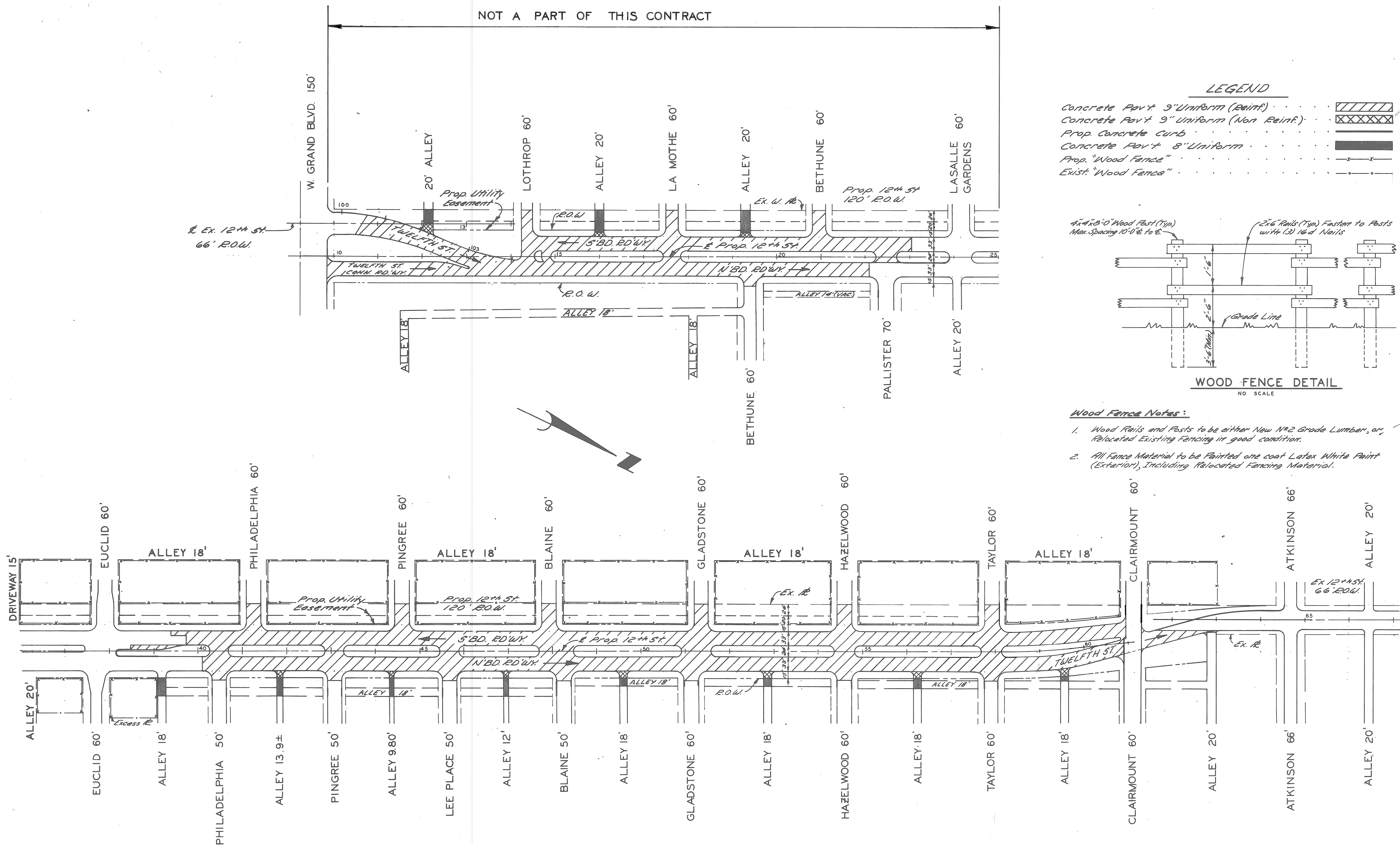
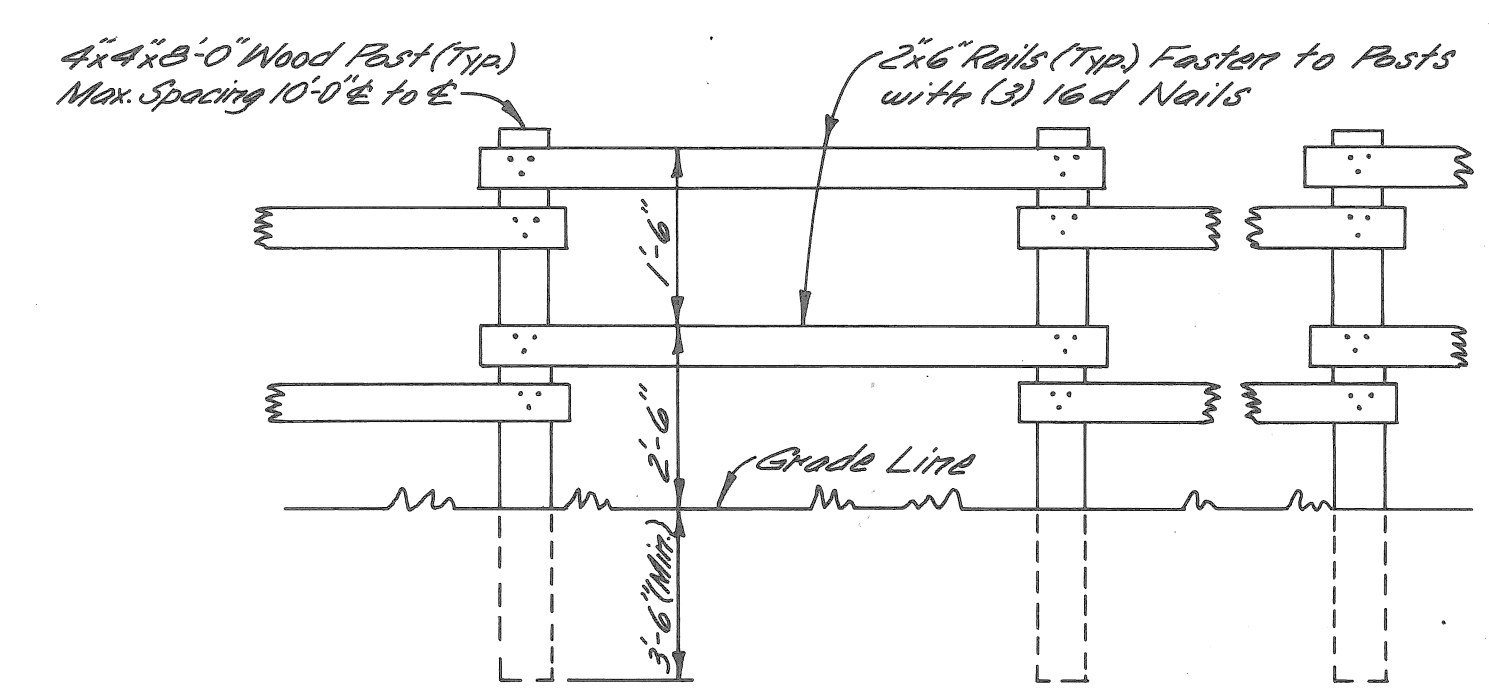


NOT A PART OF THIS CONTRACT



LEGEND

- Concrete Pav't 9" Uniform (Reinf.)
- Concrete Pav't 9" Uniform (Non Reinf.)
- Prop. Concrete Curb
- Concrete Pav't 8" Uniform
- Prop. "Wood Fence"
- Exist. "Wood Fence"



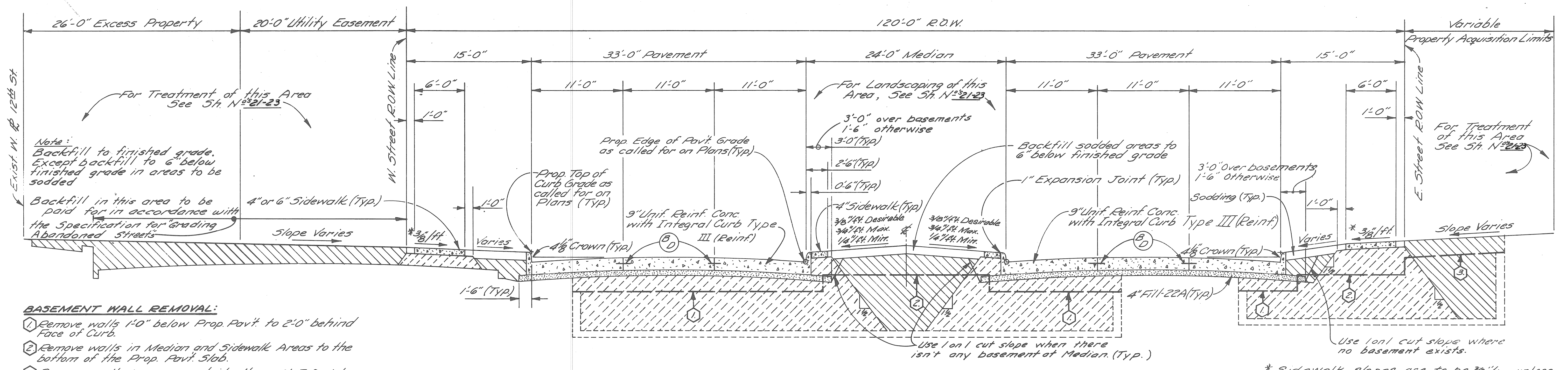
WOOD FENCE DETAIL
NO SCALE

Wood Fence Notes:

1. Wood Rails and Posts to be either New No. 2 Grade Lumber, or, Relocated Existing Fencing in good condition.
2. All Fence Material to be Painted one coat Latex White Paint (Exterior), including Relocated Fencing Material.

PLAN
Scale: 1" = 100'

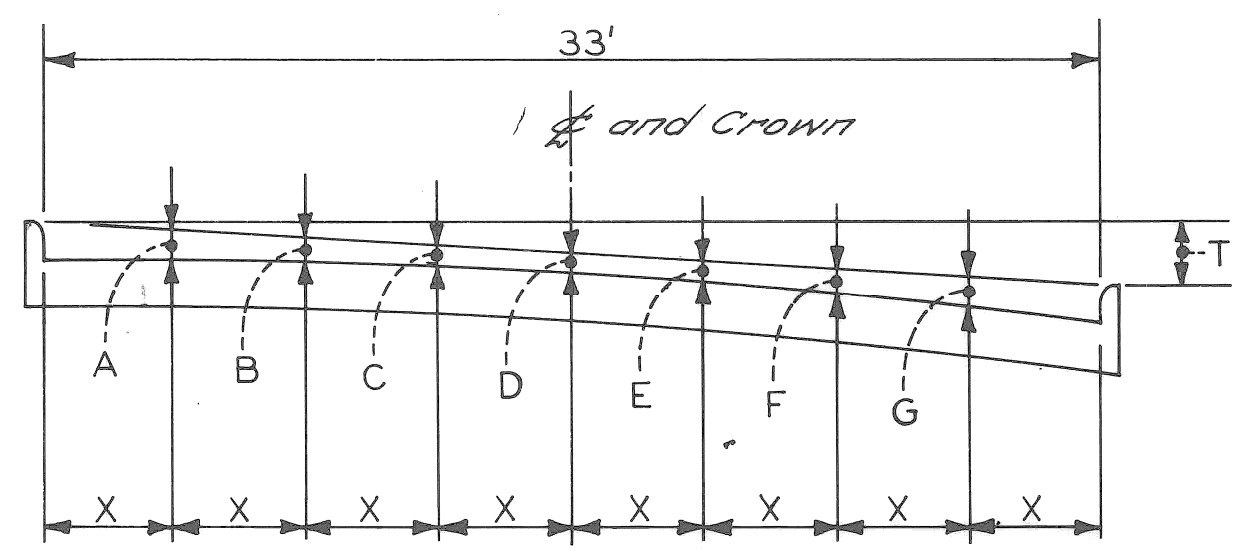
REVISIONS LOCATED BY COORDINATES ON SHEET 18-110 Added 5'bd 12" ST, Paver to Clairmont MS, I.K. 4/80	REFERENCE DRAWINGS	DESIGNED BY M. Svecach	APPROVED: ENGINEER OF EXPRESSWAYS	CITY OF DETROIT DEPARTMENT OF PUBLIC WORKS CITY ENGINEERS OFFICE FOR COMMUNITY DEVELOPMENT COMMISSION	TWELFTH STREET WIDENING EUCLID AVE. TO ATKINSON GENERAL PLAN	SHEET 2 OF 74 SHEETS
	CHECKED BY R.B.P.	TRACED BY	CONTRACT No. P.W. 6549			ASSIGNMENT No. A.O. 2091



- BASEMENT WALL REMOVAL:**
- 1 Remove walls 1'-0" below Prop. Pav't. to 2'-0" behind Face of Curb.
 - 2 Remove walls in Median and Sidewalk Areas to the bottom of the Prop. Pav't. Slab.
 - 3 Remove walls in areas outside the 120' R.O.W. to 1'-0" below the Prop. Surface Elevations.

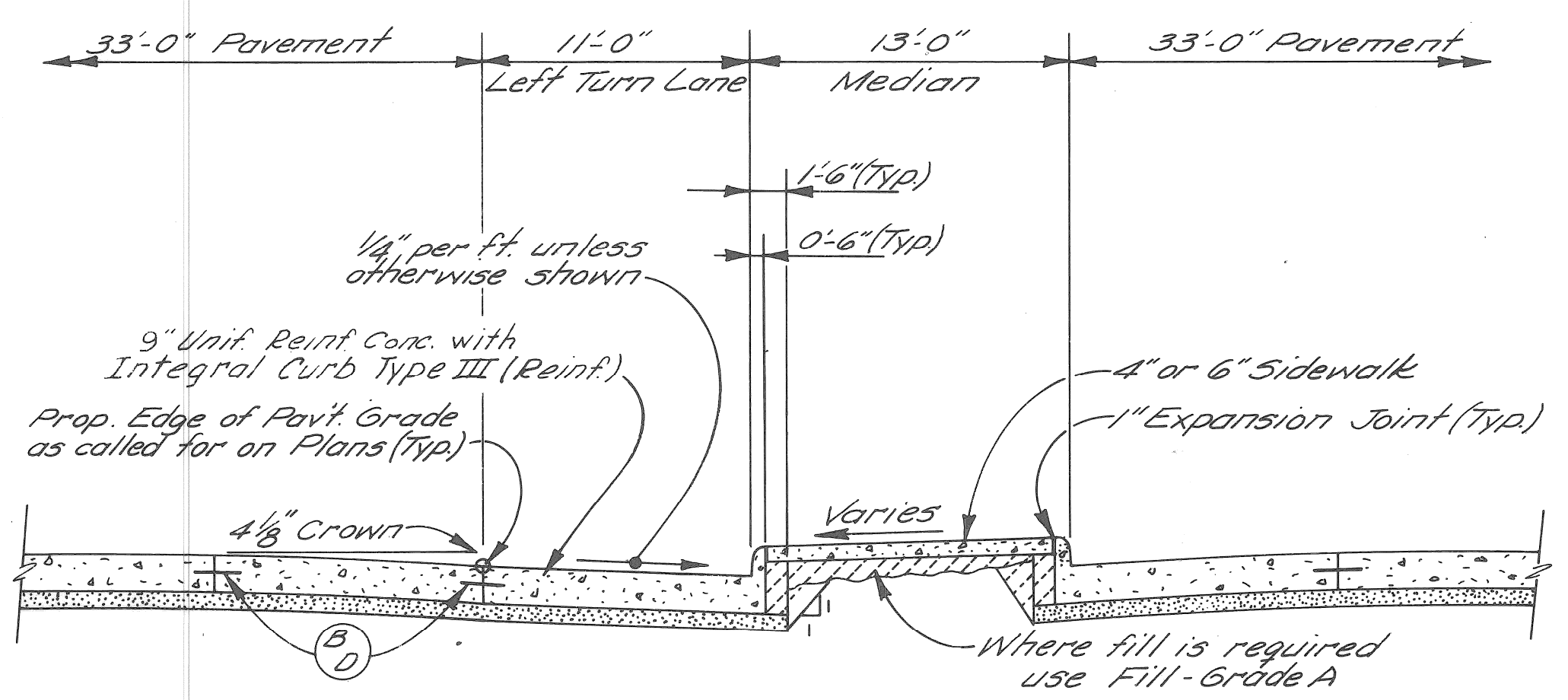
* Sidewalk slopes are to be 3/8" unless the engineer determines that a minimum slope of 1/4" or a maximum slope of 3/4" must be used to meet existing conditions

TYPICAL CROSS-SECTION OF TWELFTH ST. RELOCATION
EUCLID AVE. TO ATKINSON
NO SCALE



PAV'T WIDTH	CURB HEIGHT	X	T	A	B	C	D	E	F	G
33'	7"	4 1/2"	0.0	5 1/4"	3 7/8"	3 1/8"	2 7/8"	3 3/8"	3 3/8"	5 1/4"

ELEMENTS OF 33' PAVEMENT



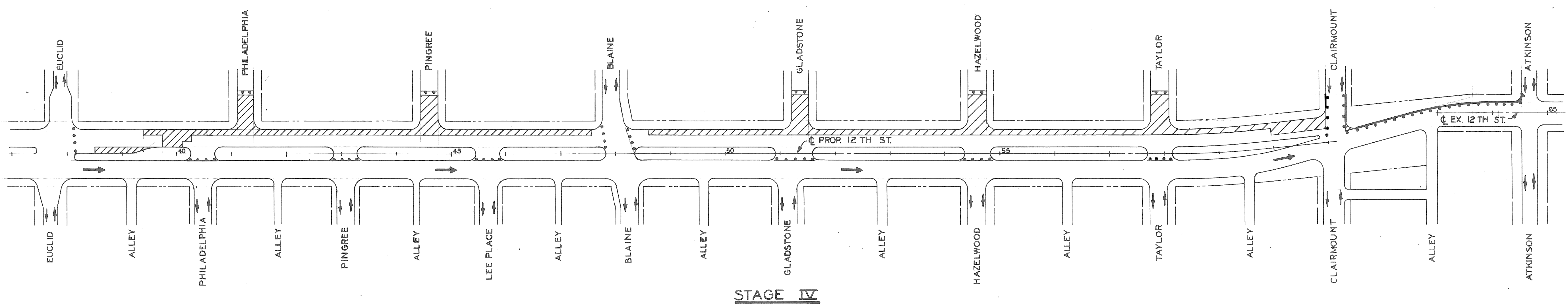
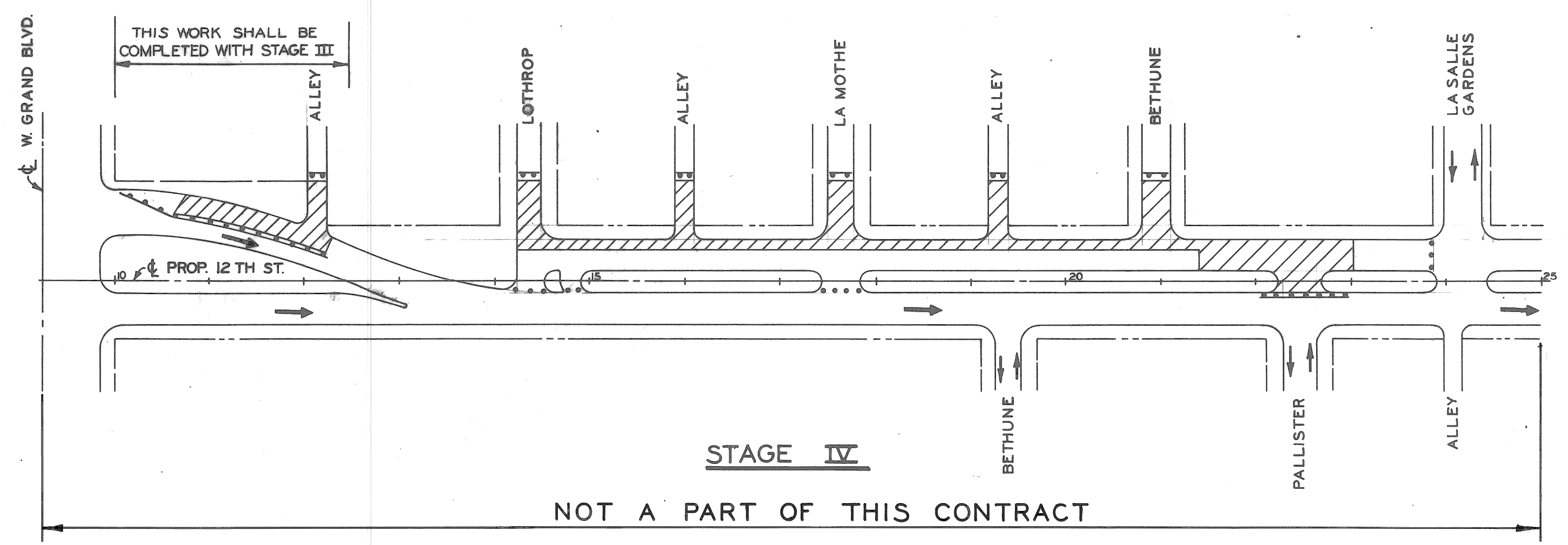
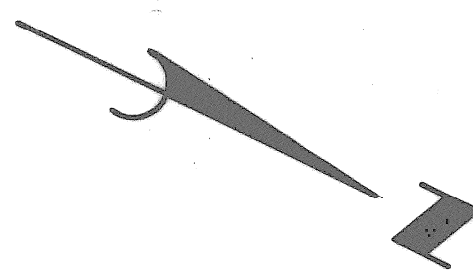
TYPICAL CROSS-SECTION OF LEFT TURN LANE
NO SCALE

- EARTHWORK LEGEND**
- Fill - Grade A
 - Fill - 22A
 - Selected Excavated Materials (See Note Below)

- JOINT LEGEND**
- B - Longitudinal Bulkhead Construction Joint
 - D - Longitudinal Lane Tie Joint

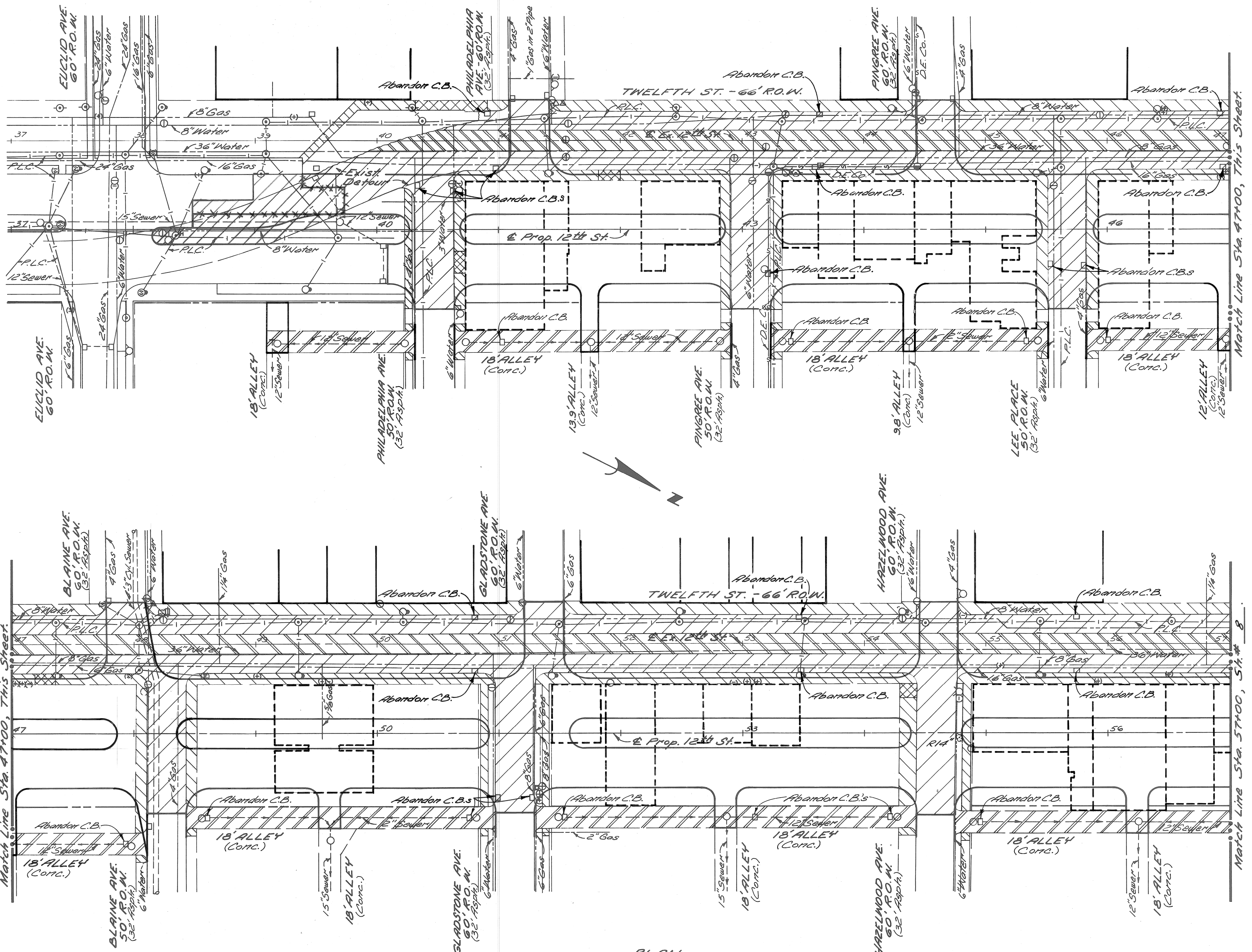
- NOTES:**
1. If the excavated material is in insufficient quantities for backfilling basements, or does not meet the specified requirements, suitable fill material shall be furnished at no additional cost.
 2. Approximately 5300 cu. yds. of Selected Excavated Material will be required for this contract.

DESIGNED BY		APPROVED:		CITY OF DETROIT DEPARTMENT OF PUBLIC WORKS CITY ENGINEERS OFFICE FOR COMMUNITY DEVELOPMENT COMMISSION		TWELFTH STREET WIDENING EUCLID AVE. TO ATKINSON TYPICAL CROSS-SECTIONS		SHEET 3 OF 74 SHEETS	
DRAWN BY		M. P.						CONTRACT No. P.W. 6549	
CHECKED BY		R. B. P.						ASSIGNMENT No. A.O. 2091	
FINAL REVIEW						DATE		2-18-74	



NOTE:
For Legend, See Sh. #5.

REVISIONS LOCATED BY COORDINATES ON SHEET COORD. DESCRIPTION DRN CKD APVD DATE 08-D10 Paved 5' wd 12th St. Taylor to Clairmount M.S. I.K. 3/6/74		DESIGNED BY M.A.P.	APPROVED: ENGINEER OF EXPRESSWAYS	CITY OF DETROIT DEPARTMENT OF PUBLIC WORKS CITY ENGINEERS OFFICE FOR COMMUNITY DEVELOPMENT COMMISSION	TWELFTH STREET WIDENING EUCLID AVE. TO ATKINSON CONSTRUCTION SEQUENCE	SHEET 6 OF 74 SHEETS
		DRAWN BY M.A.P.				CONTRACT No. P.W.6549 ASSIGNMENT No. A.O.2091 DATE 2-18-74



REMOVAL LEGEND

Streetcar Rail and Track Base Removal	
Street Pavement Removal (Unreinf.)	
Driveway Removal	
Sidewalk Removal	
Alley Pavement Removal	
Existing Basement	
Existing Building to Remain	
Tree Removal	

NOTES:

1. For Utility Legend, See Sta. N# 17.
2. The removal of trees less than 4" in dia. is incidental to the contract.

PLAN
Scale: 1"=40'

As Built/Additional Pav't Removal	W.B.C.	8/3/77
38+50 to 39+75		
COORD	DESCRIPTION	DN
REVISIONS LOCATED BY COORDINATES ON SHEET		

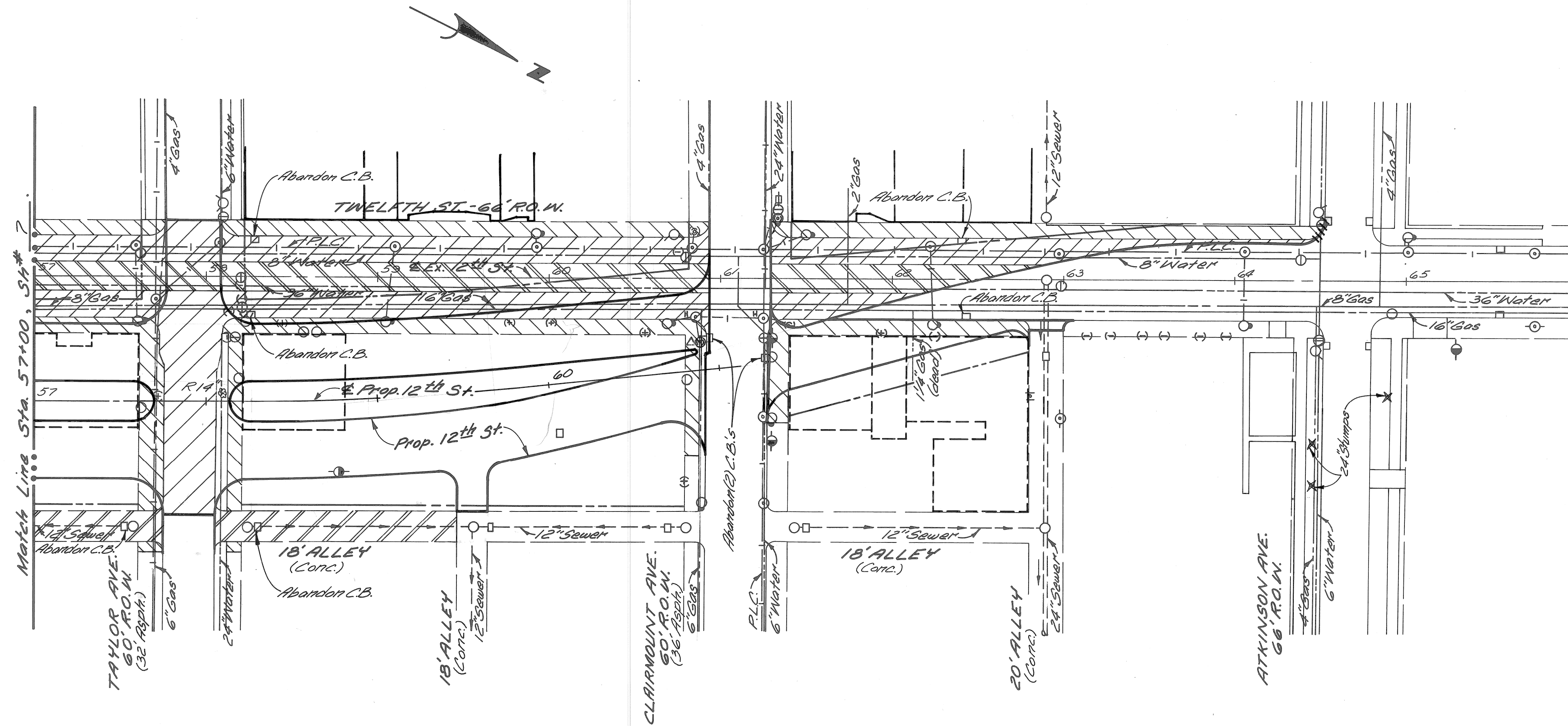
DESIGNED BY	J.R.D.
DRAWN BY	J.R.D.
TRACED BY	
CHECKED BY	J.H.K.

APPROVED:
Allen E. Proger
ENGINEER OF EXPRESSWAYS

CITY OF DETROIT
DEPARTMENT OF PUBLIC WORKS
CITY ENGINEERS OFFICE
FOR
COMMUNITY DEVELOPMENT COMMISSION

TWELFTH STREET WIDENING
EUCLID AVE. TO ATKINSON
REMOVALS, EUCLID AVE. TO STA. 57+00

SHEET 7 OF 74 SHEETS
CONTRACT NO. P.W. 6549
ASSIGNMENT No. A.O. 2091
DATE 2-18-74



LEGEND

- Streetcar Rail and Track Base Removal
- Street Pavement Removal (Unreitt)
- Sidewalk Removal
- Alley Pavement Removal
- Existing Basement
- Existing Building to Remain
- Separate Type Curb Removal

PLAN
Scale: 1" = 40'

- NOTES:**
1. For Utility Legend, See Sta No 18.
 2. The removal of trees less than 4" in dia. is incidental to the contract.

DESIGNED BY J.R.D.		APPROVED: ENGINEER OF EXPRESSWAYS	CITY OF DETROIT DEPARTMENT OF PUBLIC WORKS CITY ENGINEERS OFFICE FOR COMMUNITY DEVELOPMENT COMMISSION	TWELFTH STREET WIDENING EUCLID AVE. TO ATKINSON		SHEET 8 OF 74 SHEETS
DRAWN BY J.R.D.				REMOVALS, STA. 57 + 00 TO ATKINSON AVE.		CONTRACT NO. PW. 6549
TRACED BY						ASSIGNMENT NO. AO. 2091
CHECKED BY J.H.K.						DATE 2-18-74
REVISIONS LOCATED BY COORDINATES ON SHEET						

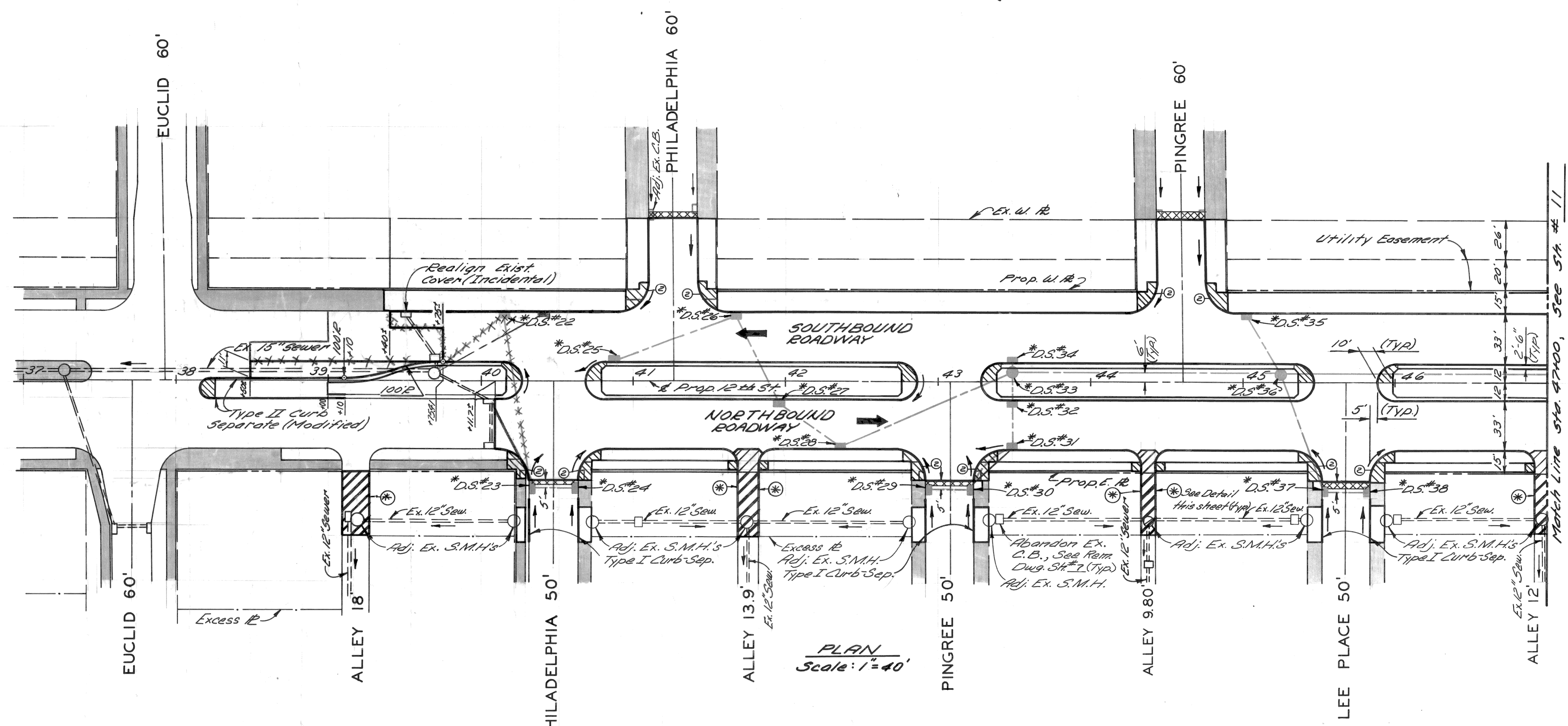
P.B.M. #32-250 Elev. 152.80 N.E.
Corner 12th St. at Euclid Ave.

C.B.M. Elev. 156.14 Arrow on Hydrant
N.W. Corner 12th St. at Philadelphia.

C.B.M. Elev. 157.65 Arrow on Hydrant
S.W. Corner 12th St. at Pingree.

NOTES

1. All street return radii are 20'.
2. For utility adjustments or reconstruction, See St. # 17.
3. For Alignment, See St. # 4.



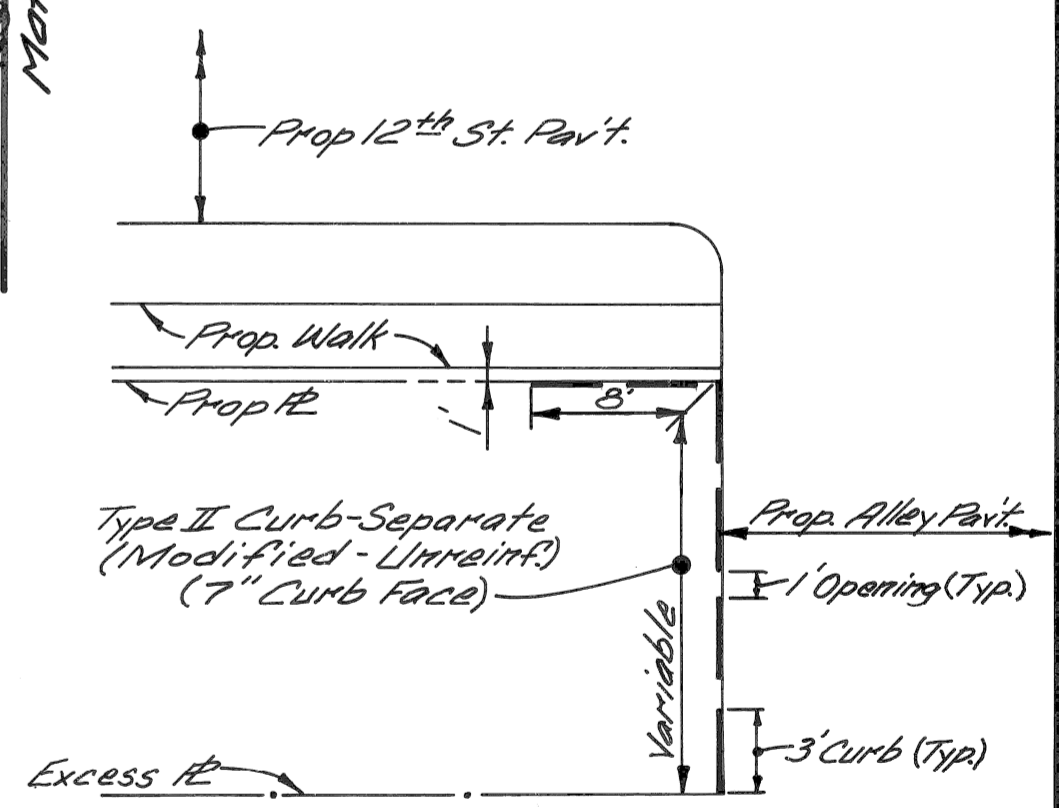
PLAN
Scale: 1"=40'

* D.S. refers to Drainage Structure with Sewer as shown in the table below.

DRAINAGE STRUCTURE NUMBER	TYPE OF STRUCTURE	WITH OR WITHOUT TRAP	SEW. LENGTH & TYPE LEAVING D.S.			COMMENTS
			LENGTH (FT.)	SIZE (IN)	CLASS	
22	C.B.'B"	With	56	12	C-76/III	
23	C.B.'B"	Without	111	12	"	Sew. length includes 3' of "Sew. under Pavt."
24	C.B.'A"	"	27	12	"	All Sewer is "Sewer under Pavt."
25	C.B.'A"	"	83	12	"	
26	C.B.'B"	"	61	12	"	
27	C.B.'B"	"	44	12	"	
28	C.B.'B"	With	120	12	"	
29	C.B.'A"	Without	27	12	"	All Sewer is "Sewer under Pavt."
30	C.B.'B"	"	34	12	"	Sew. length includes 3' of Sewer under Pavt.
31	C.B.'B"	"	27	12	"	
32	C.B.'B"	With	15	12	"	
33	M.H.-Drop	Without	182	18	"	
34	C.B.'B"	With	3	12	"	
35	C.B.'B"	"	41	12	"	
36	M.H.-Drop	Without	173	18	"	
37	C.B.'B"	With	79	12	"	Sew. length includes 3' of "Sew. under Pavt."
38	C.B.'A"	Without	27	12	"	All Sewer is "Sewer Under Pavt."

⊕ Consists of 18" Sewer to Match Line only.

*** DETAIL OF CURB ALONG ALLEYS**
NO SCALE



LEGEND

- Strip & Adjust Asphalt Surface.
- Conc. Pav't - 3" Unif. (Norm. Reinf.).
- Sidewalk - 6" (Sdwt Ramp areas are paid for Separately)
- Exist. Sidewalk or Driveway to Remain.
- Conc. Pav't - 3" Unif. (Reinf.) with Type III Curb. Integral (Reinf.).
- Conc. Pav't - 3" Unif. (Norm. Reinf.).
- Sidewalk Ramps - 6", Types 1, 2 or 3

DESCRIPTION	DWN	CK'D	APVD	DATE
D.S.#23 Drains To Ex. C.B.	M.S.W.B.			8/17/77
D.S.#22 Moves 27' North	M.S.W.B.			8/17/77
Extra Paving - Southbound Roadway	W.B.C.			8/17/77
Sta. 38+50 to 39+75				

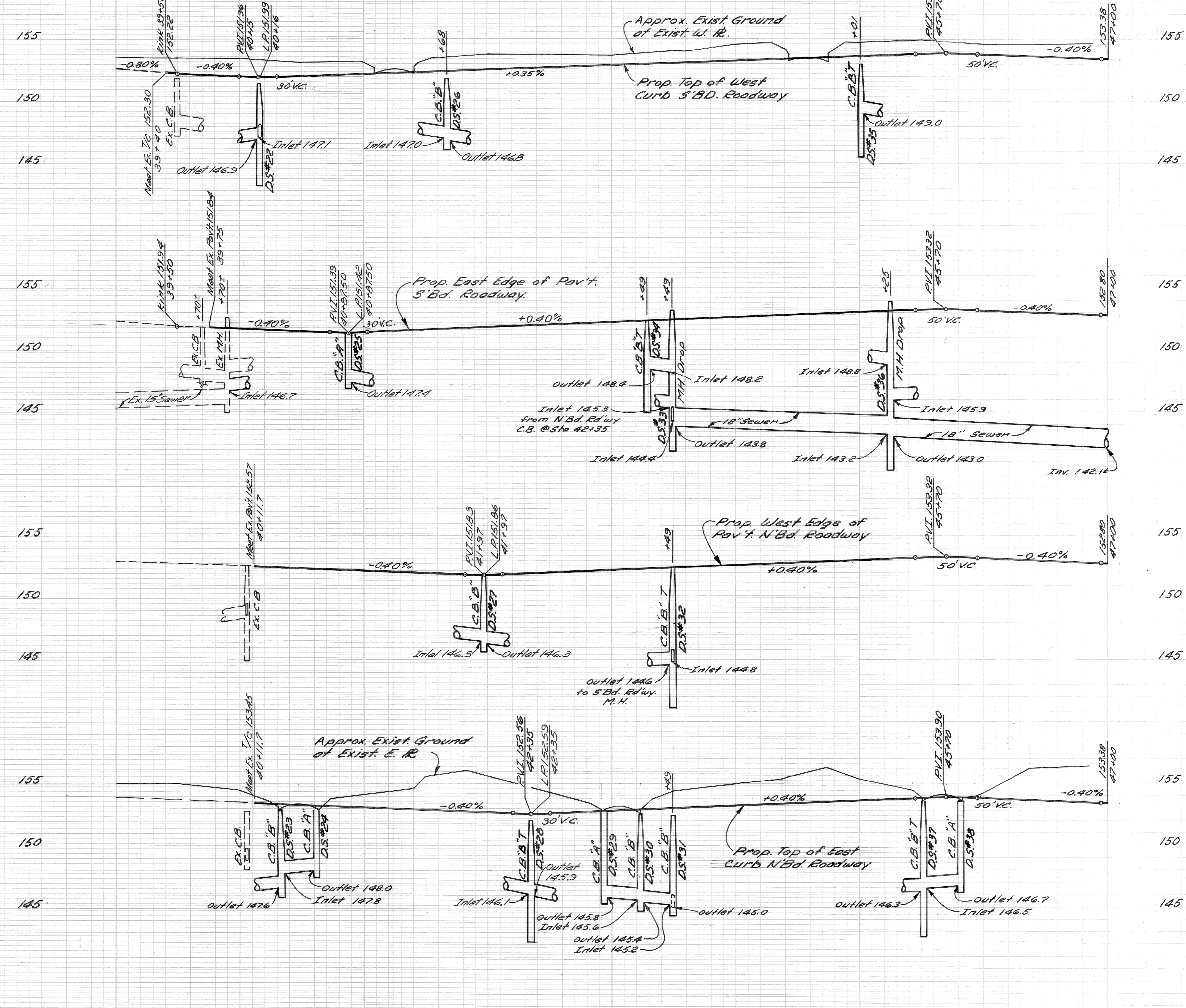
DESIGNED BY	M. S.	APPROVED:	<i>William E. Proger</i> ENGINEER OF EXPRESSWAYS
DRAWN BY	M. S.		
TRACED BY			
CHECKED BY	R.A.C.		

CITY OF DETROIT
DEPARTMENT OF PUBLIC WORKS
CITY ENGINEERS OFFICE
FOR
COMMUNITY DEVELOPMENT COMMISSION

TWELFTH STREET WIDENING
EUCLID AVE. TO ATKINSON
PLAN, EUCLID AVE. TO STA. 47+00

SHEET 9 OF 74 SHEETS
CONTRACT NO. P.W. 6549
ASSIGNMENT No. A.O. 2091
DATE 2-18-74

39+00 40+00 41+00 42+00 43+00 44+00 45+00 46+00 47+00



DESIGNED BY		APPROVED:	<i>Allen Proger</i>
DRAWN BY	M. S.	ENGINEER OF EXPRESSWAYS	
TRACED BY			
CHECKED BY	R. B. P.		

CITY OF DETROIT
 DEPARTMENT OF PUBLIC WORKS
 CITY ENGINEERS OFFICE
 FOR
 COMMUNITY DEVELOPMENT COMMISSION

TWELETH STREET WIDENING
 EUCLID AVE. TO ATKINSON
 PROFILES EUCLID AVE. TO STA. 47+00

SHEET <u>10</u> OF <u>74</u> SHEETS
CONTRACT No. P.W. 6549
ASSIGNMENT NO. A.O. 2091
DATE 2-18-74

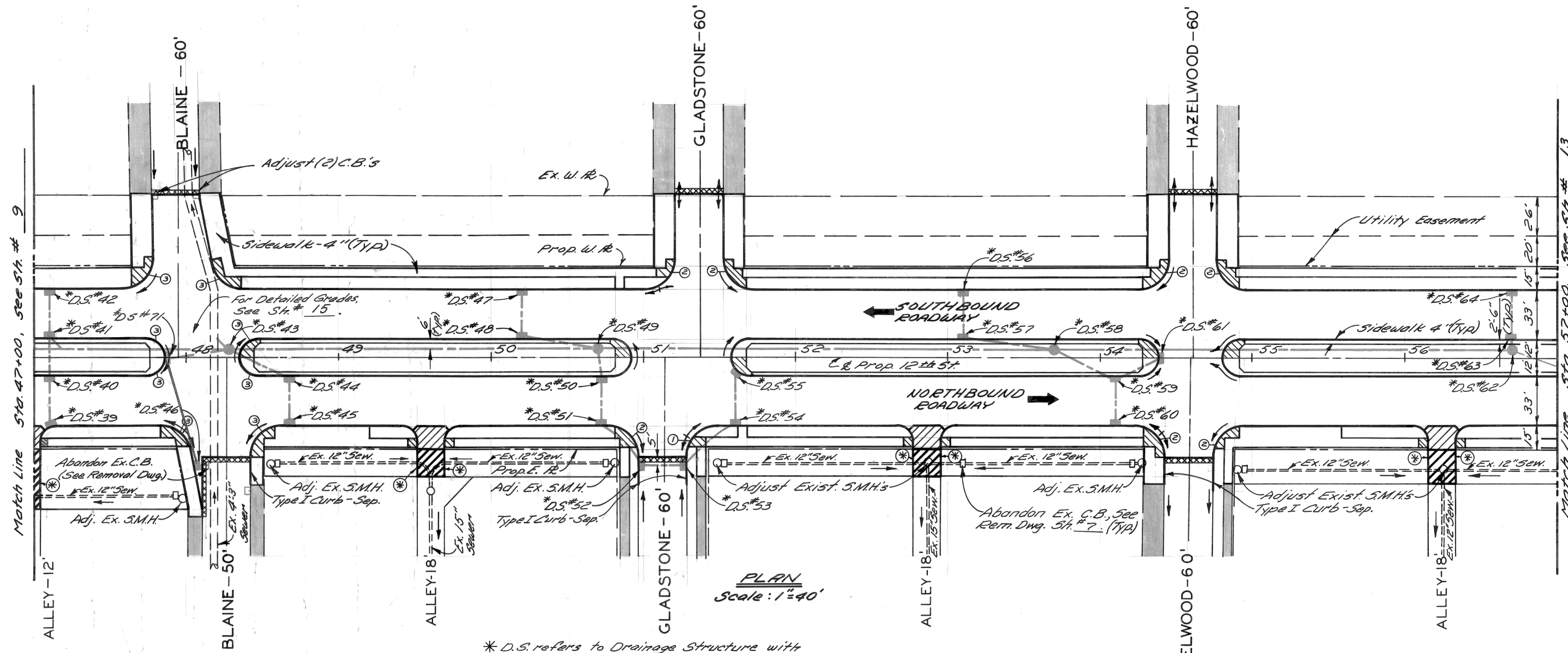
C.B.M. #12 Elev. 157.35 Arrow on Hydrant
N.W. Corner Twelfth St. at Blaine Ave.

C.B.M. #13 Elev. 156.92 Arrow on Hydrant
S.W. Corner Twelfth St. at Gladstone Ave.

C.B.M. #14 Elev. 156.88 Arrow on Hydrant
N.W. Corner Twelfth St. at Hazelwood Ave.

NOTES

1. All Street Return Radii are 20'
2. For Utility adjustments or reconstructions, see Sh.# 17
3. For Alignment, see Sh.# 4



PLAN
Scale: 1"=40'

* D.S. refers to Drainage Structure with Sewer as shown in the table below.

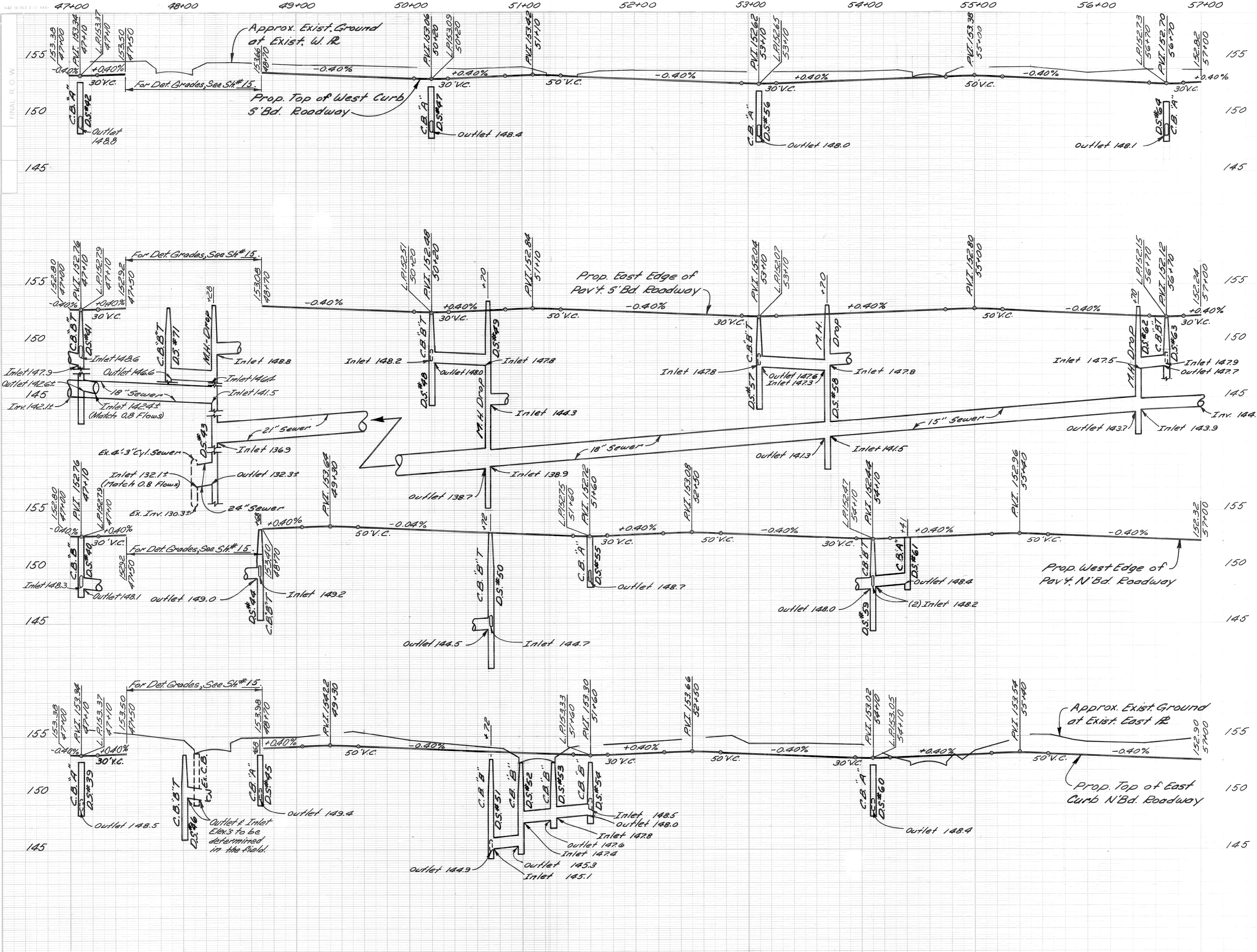
DRAINAGE STRUCTURE NUMBER	TYPE OF STRUCTURE	WITH OR WITHOUT TRAP	SEW. LENGTH & TYPE LEAVING D.S.		CLASS	COMMENTS
			LENGTH (FT.)	SIZE (IN)		
39	CB'A"	Without	28	12	C-76-III	
40	CB'B"	"	22	12	"	
41	CB'B"	With	10	12	"	
42	CB'A"	Without	28	12	"	
43	M.H.-Drop	"	126	10	C-76-III	126' of 10" Sewer from match line to D.S.#43.
44	CB'B"	With	40	12	C-76-III	
45	CB'A"	Without	28	12	"	
46	CB'A"	With	3	12	"	
47	CB'A"	Without	28	12	"	
48	CB'B"	With	46	12	"	
49	M.H.-Drop	Without	239	21	C-76-III	
50	CB'B"	With	15	12	C-76-III	
51	CB'B"	Without	27	12	"	
52	CB'B"	"	34	12	"	Sew. length includes 3' of Sew. Under Pav't
53	CB'B"	"	26	12	"	All Sewer is Sewer Under Pav't
54	CB'B"	"	38	12	"	
55	CB'A"	"	31	12	"	
56	CB'A"	"	28	12	"	
57	CB'B"	With	56	12	"	
58	M.H.-Drop	Without	296	18	"	
59	CB'B"	With	39	12	"	
60	CB'A"	Without	28	12	"	
61	CB'A"	"	28	12	"	
62	M.H.-Drop	"	296	29	15/12	29' of 12" Sewer from match line to D.S.#62.
63	CB'B"	With	3	12	"	
64	CB'A"	Without	28	12	"	
71	CB'B"	With	38	12	"	

⊙ See Curb Detail, Sh.# 9

LEGEND

- ⊗ Strip & Adjust Asphalt Surface
- ▨ Conc. Pav't - 9" Unif. (Non-Reinf.)
- ▧ Sidewalk - 6" (Sloak Ramp areas are paid for Separately)
- ▩ Exist. Sidewalk or Driveway to Remain.
- ▭ Conc. Pav't - 9" Unif. (Reinf.) with Type III Curb. Integral (Reinf.)
- ▨ Conc. Pav't - 8" Unif. (Non-Reinf.)
- ⊙ ⊙ ⊙ Sidewalk Ramps (6" or 6") - Types 1, 2 or 3.

As Built D.S.#46 Drains to D.S.# 71 MS, W.B. 8/17/77	DESIGNED BY M. S.	APPROVED: ENGINEER OF EXPRESSWAYS	CITY OF DETROIT DEPARTMENT OF PUBLIC WORKS CITY ENGINEERS OFFICE FOR COMMUNITY DEVELOPMENT COMMISSION	TWELFTH STREET WIDENING EUCLID AVE. TO ATKINSON PLAN, STA. 47+00 TO STA. 57+00	SHEET 11 OF 74 SHEETS CONTRACT NO. P.W. 6549 ASSIGNMENT No. A.O. 2091 DATE 2-18-74
DRAWN BY M. S.		CHECKED BY R.A.C.		REVISIONS LOCATED BY COORDINATES ON SHEET	



DESIGNED BY	
DRAWN BY	M. S.
TRACED BY	
CHECKED BY	R. B. P.

APPROVED:

 ENGINEER OF EXPRESSWAYS

CITY OF DETROIT
 DEPARTMENT OF PUBLIC WORKS
 CITY ENGINEERS OFFICE
 FOR
 COMMUNITY DEVELOPMENT COMMISSION

TWELETH STREET WIDENING
 EUCLID AVE. TO ATKINSON
 PROFILES STA. 47+00 TO STA. 57+00

SHEET	12 OF 74	SHEETS
CONTRACT No.	PW. 6549	
ASSIGNMENT NO.	AD. 2091	
DATE	2-18-74	

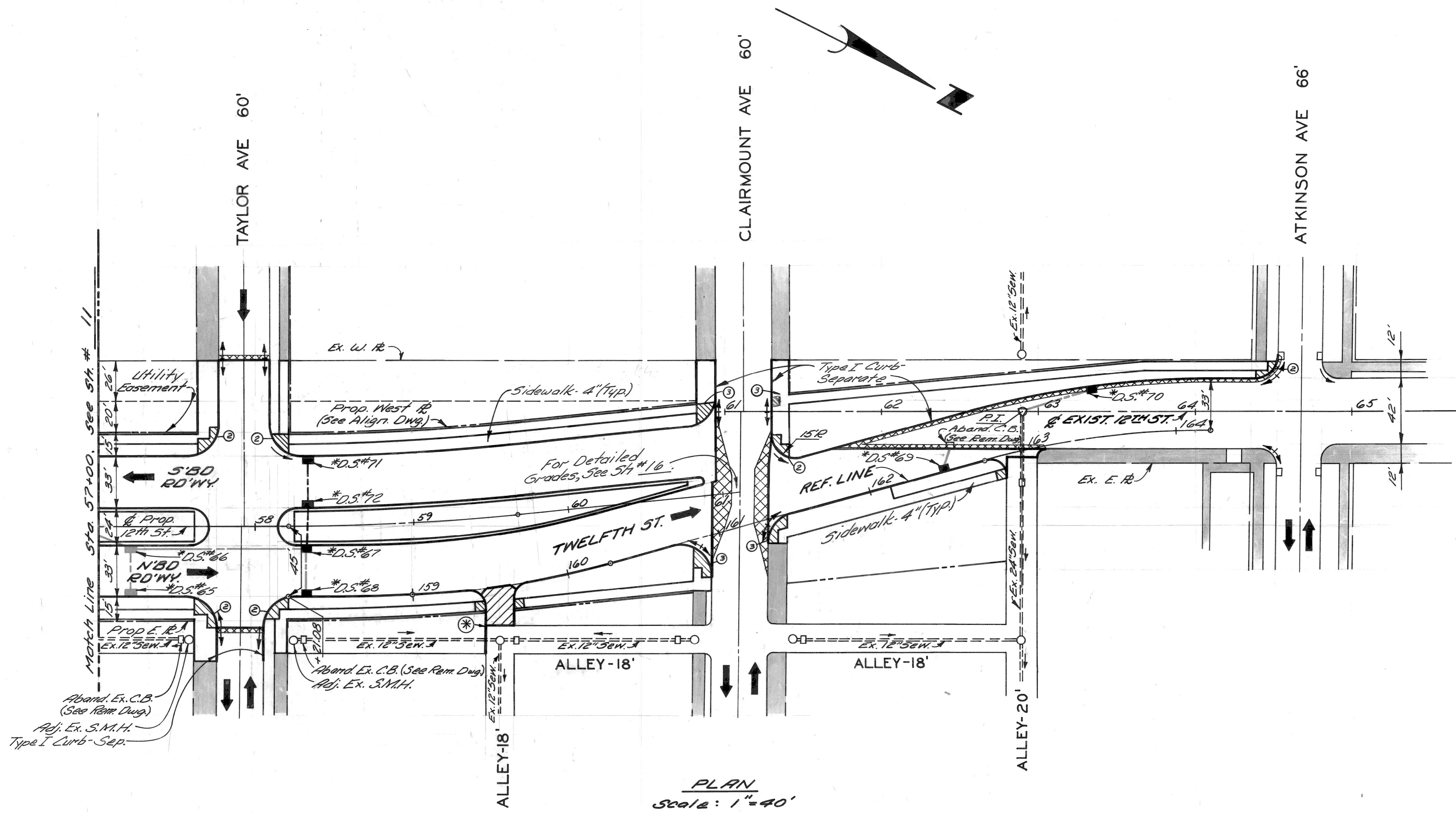
C.B.M. #15 Elev. 156.48 Arrow on Hydrant
N.W. Corner Twelfth St. at Taylor Ave.

C.B.M. #16 Elev. 157.50 Arrow on Hydrant
S.W. Corner Twelfth St. at Clairmount Ave.

P.B.M. # 32-251 Elev. 154.99 N.E.
Corner Twelfth St. at Atkinson Ave.

LEGEND

- Strip and Adjust Asphalt Surface
- Concrete Pavement, 9" Uniform (Non-Reinforced)
- Sidewalk - 6" (Sdwlk Ramp areas are paid for Separately)
- Existing Sidewalk or Driveway to Remain
- Concrete Pavement, 9" Uniform (Reinforced) with Type III Curb Integral (Reinforced)
- ① ② ③ Sidewalk Ramps (4' or 6') - Types 1, 2 or 3.



PLAN
Scale: 1" = 40'

NOTES:

1. All proposed street return radii are 20' unless otherwise noted.
2. For utility adjustments or reconstruction, See St. # 18.
3. For Alignment, See St. # 4.

⊙ See Detail, St. # 9.

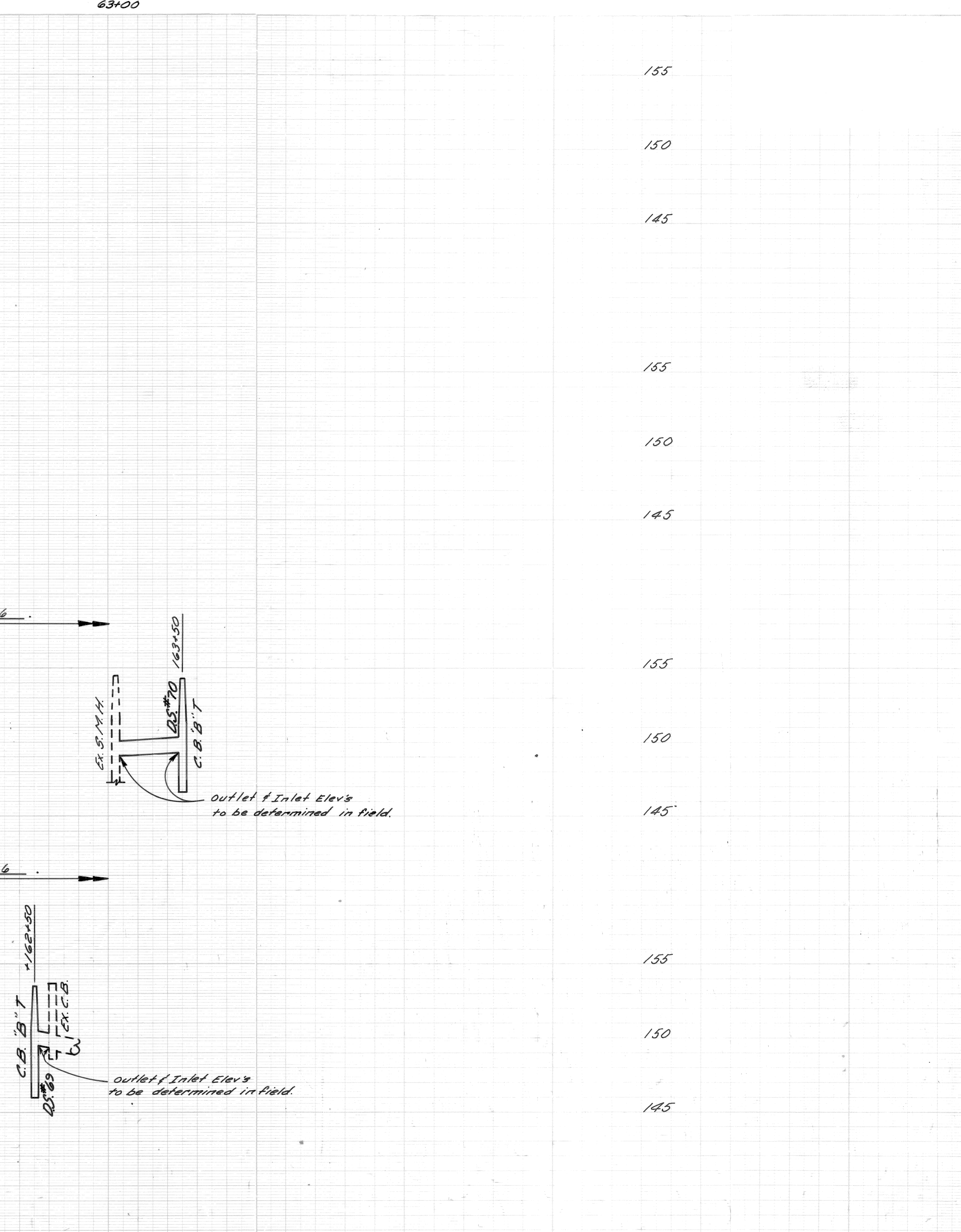
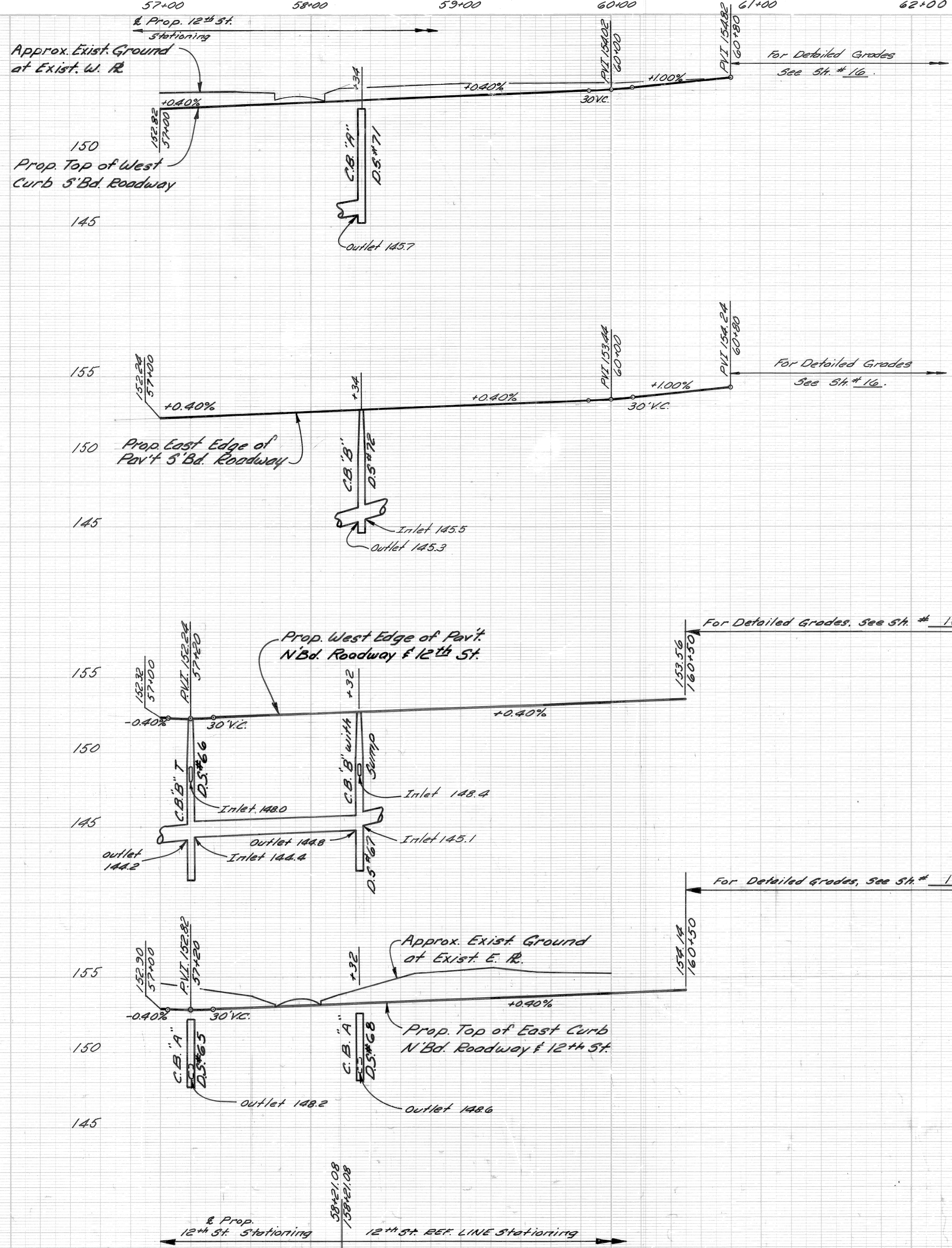
* D.S. refers to Drainage Structure with Sewer as shown in the table below.

DRAINAGE STRUCTURE NUMBER	TYPE OF STRUCTURE	WITH OR WITHOUT TRAP	SEW. LENGTH & TYPE LEAVING D.S.			COMMENTS
			LENGTH (FT.)	SIZE (IN)	CLASS	
65	C.B.'A"	Without	28	12	C-76-III	
66	C.B.'B"	With	20	12	"	
67	C.B.'B"	Without	108	12	"	With SUMP
68	C.B.'A"	"	28	12	"	
69	C.B.'B"	With	12	12	"	
70	C.B.'B"	"	43	12	"	All Sewer is Sewer Under Rev. F.
71	C.B.'A"	Without	28	12	"	
72	C.B.'B"	"	22	12	"	

⊙ Consists of 12" Sewer to Match Line only

<p>REVISIONS LOCATED BY COORDINATES ON SHEET</p>	<p>REFERENCE DRAWINGS</p>	<p>DESIGNED BY M.S.</p>	<p>APPROVED: <i>Allen E. Pagan</i> ENGINEER OF EXPRESSWAYS</p>	<p>CITY OF DETROIT DEPARTMENT OF PUBLIC WORKS CITY ENGINEERS OFFICE FOR COMMUNITY DEVELOPMENT COMMISSION</p>	<p>TWELFTH STREET WIDENING EUCLID AVE. TO ATKINSON PLAN, STA. 57+00 TO ATKINSON</p>	<p>SHEET 13 OF 74 SHEETS CONTRACT No. P.W.6549 ASSIGNMENT No. A.O.2091 DATE 2-18-74</p>
--	---------------------------	------------------------------------	--	--	--	--

FINAL R.O.W.



155
150
145
155
150
145
155
150
145
155
150
145
155
150
145

57+00 58+00 59+00 60+00 61+00 62+00 63+00
 & Prop. 12th St. Stationing
 12th St. REF. LINE Stationing
 57+00 58+00 59+00 60+00 61+00 62+00 63+00

DESIGNED BY	M.S.
DRAWN BY	M.S.
TRACED BY	
CHECKED BY	R.A.C.

APPROVED
Alan E. Progan
 ENGINEER OF EXPRESSWAYS

CITY OF DETROIT
 DEPARTMENT OF PUBLIC WORKS
 CITY ENGINEERS OFFICE
 FOR
 COMMUNITY DEVELOPMENT COMMISSION

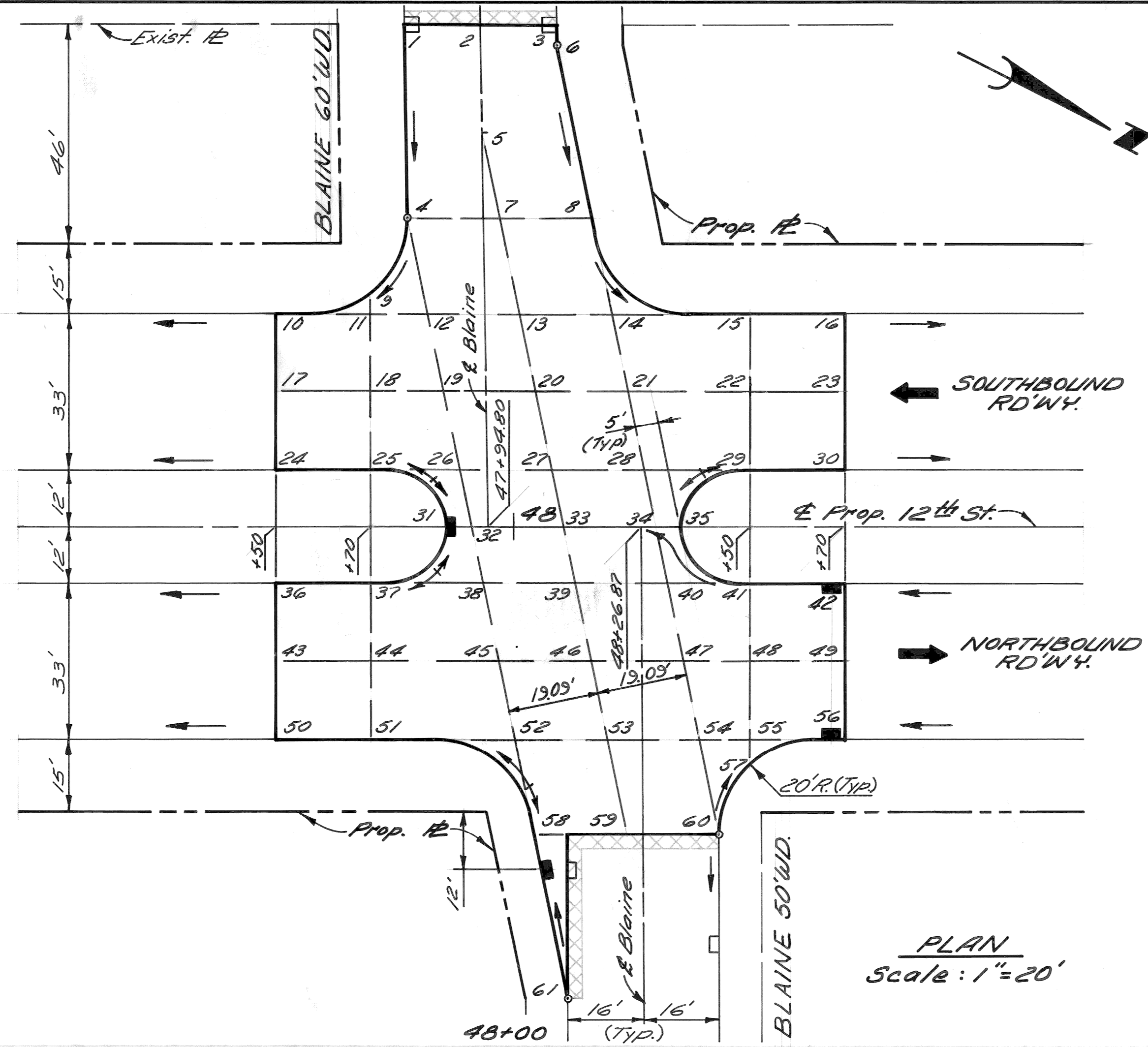
TWELETH STREET WIDENING
 EUCLID AVE TO ATKINSON
 PROFILES STA. 57+00 TO ATKINSON

SHEET 14 OF 74 SHEETS
CONTRACT No. PW. 6549
ASSIGNMENT NO. A.O. 2091
DATE 2-18-74

SCALE	HORIZONTAL	BOOK NO.	LEVEL DATE
	VERTICAL	PG. PAVING COMPLETED	

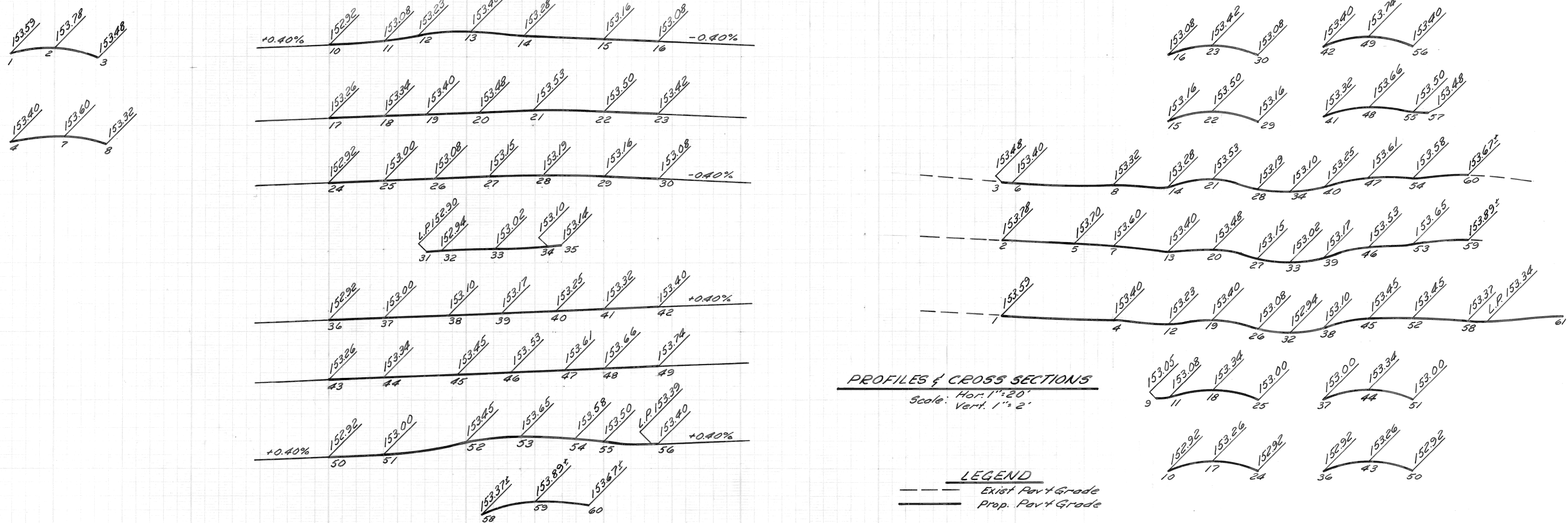
NOTE - FOR SYMBOLS (A) ETC. SEE STANDARD DETAIL DRAWING NO. C-4179

BENCH MARKS ELEV.



LEGEND
Strip & Adjust Asphalt Surface

PLAN
Scale: 1"=20'



PROFILES & CROSS SECTIONS
Scale: Hor. 1"=20', Vert. 1"=2'

LEGEND
--- Exist Pavt Grade
— Prop. Pavt Grade

PLAN	BY M.S.	CHECKED BY R.A.C.	APPROVED: <i>Allen E. Papp</i>
GRADE	BY M.S.	CHECKED BY R.A.C.	ENGINEER OF EXPRESSWAYS
ESTIMATE			
DESCRIPTION	DRN	CK'D	AP'VD
REVISIONS	DATE	CHECK	REVIEW

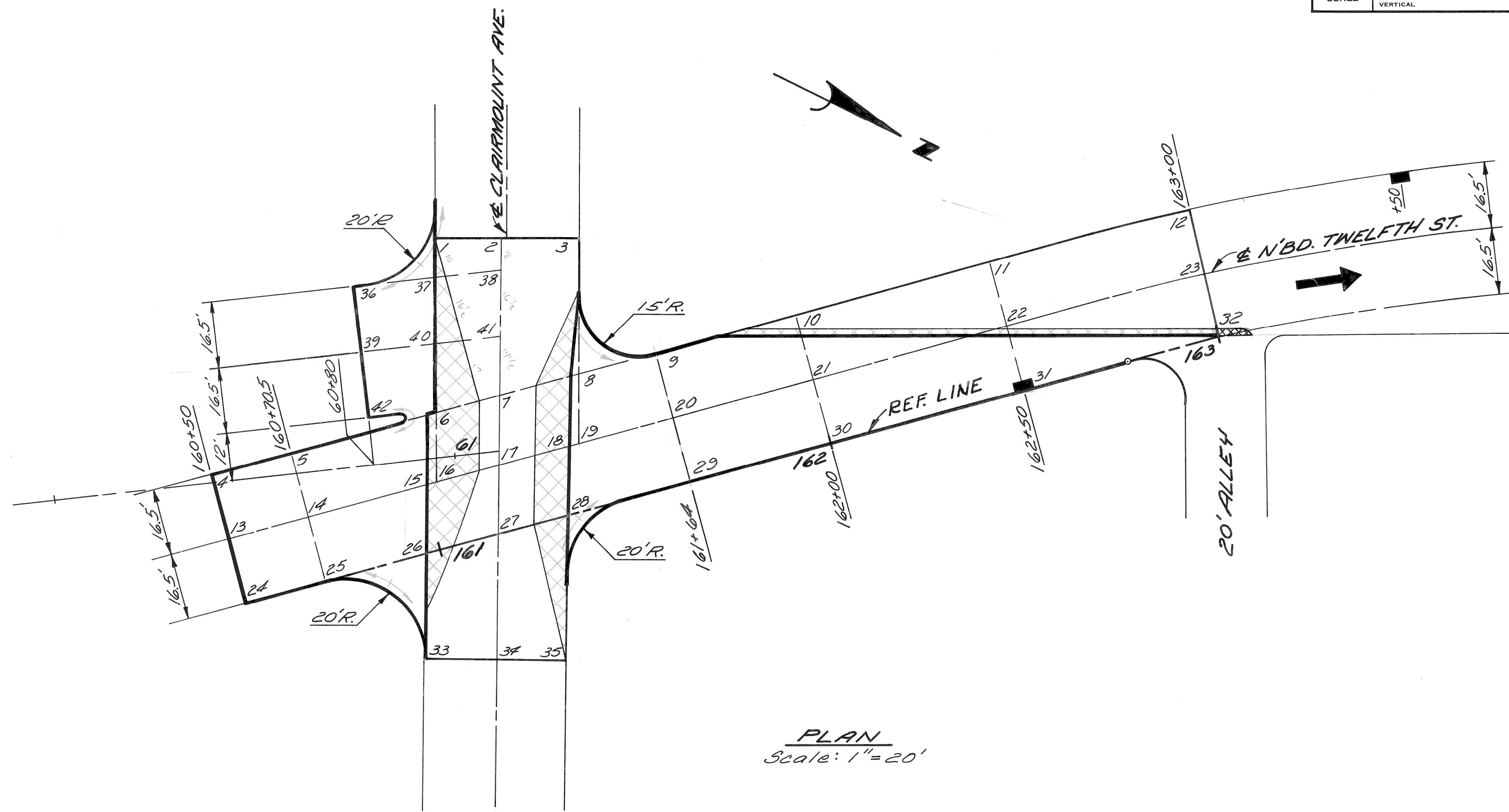
CITY OF DETROIT
DEPARTMENT OF PUBLICWORKS
CITY ENGINEERS OFFICE
FOR
COMMUNITY DEVELOPMENT COMMISSION

TWELFTH STREET WIDENING
EUCLID AVE TO ATKINSON
DETAILED GRADES FOR TWELFTH ST. AT BLAINE AVE.

INDEX NO.	SHEET 15 OF 74 SHEETS
CONTRACT NO.	P.W. 6549
ASSIGNMENT NO.	A.O. 2091
DATE	2-18-74

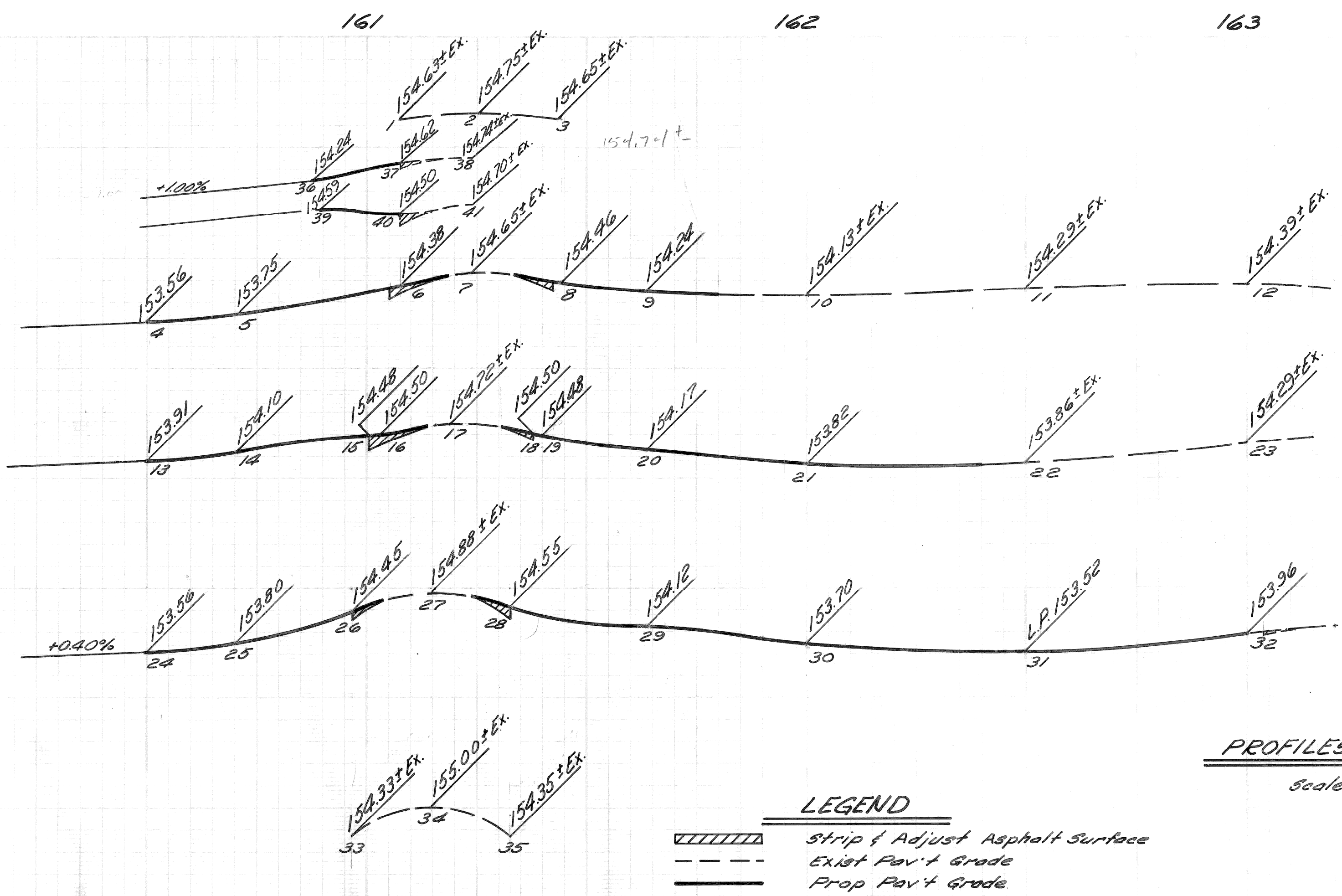
SCALE	HORIZONTAL	BOOK NO.	LEVEL	DATE	BEFORE STARTING CONSTRUCTION... CONTRACTOR MUST CHECK WITH UTILITIES FOR LOCATIONS OF EXISTING STRUCTURES WHETHER OR NOT INDICATED ON PLANS.	NOTE - FOR SYMBOLS (A) ETC. SEE STANDARD DETAIL DRAWING NO. C-4175
	VERTICAL	NO. PG.				
		PAVING COMPLETED				

BENCH MARKS ELEV.

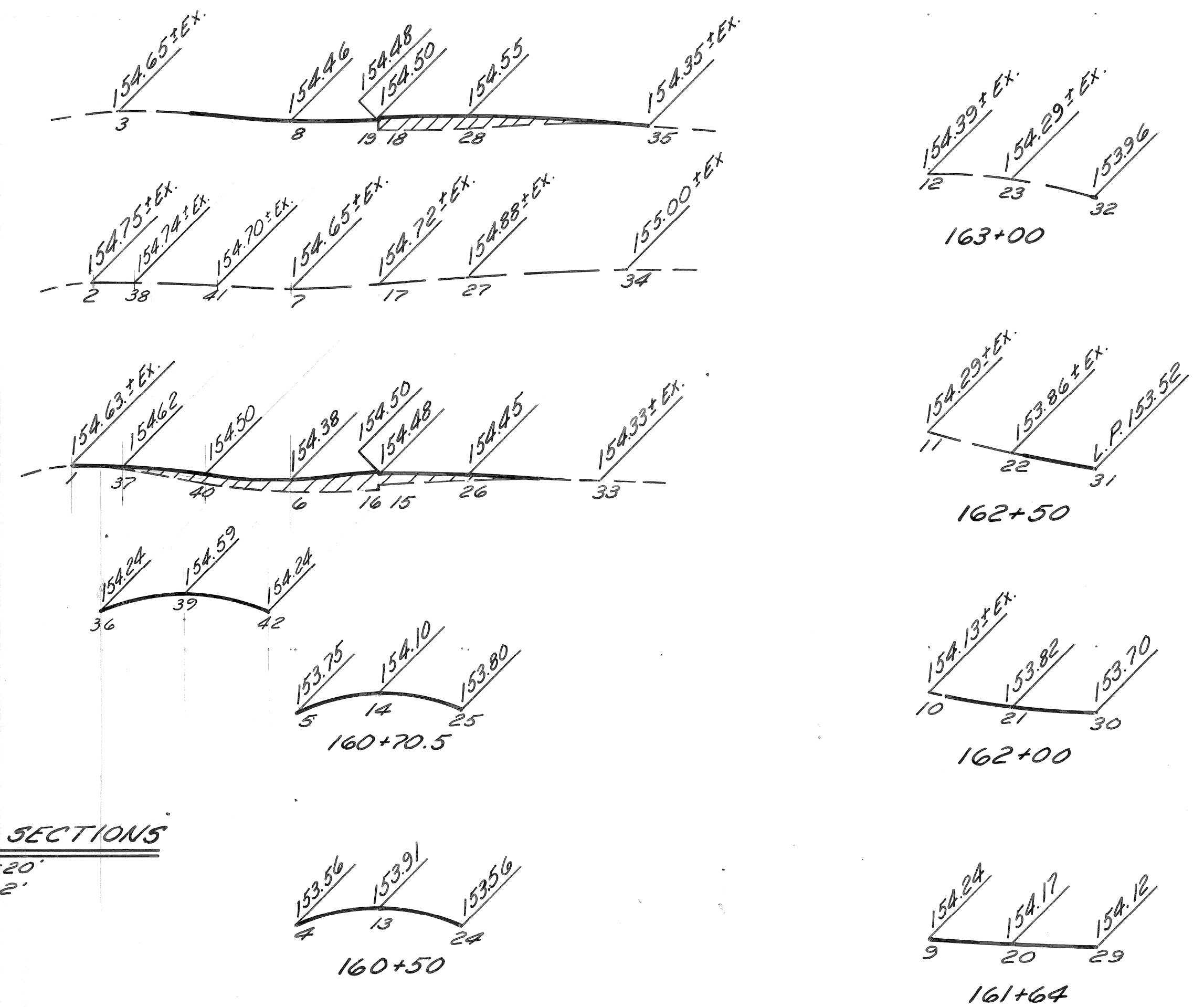


PLAN
Scale: 1" = 20'

LEGEND
Strip & Adjust Asphalt Surface



PROFILES & CROSS SECTIONS
Scale: Hor. 1" = 20'
Vert 1" = 2'



BY	CHECKED BY	APPROVED:
J.D.	R.A.C.	<i>Allen E. Prokop</i>
PLAN		ENGINEER OF EXPRESSWAYS
GRADE	M.S.	R.A.C.
ESTIMATE		
DESCRIPTION	DRN	CK'D
REVISIONS	AP'D	DATE

CITY OF DETROIT
DEPARTMENT OF PUBLIC WORKS
CITY ENGINEERS OFFICE
FOR
COMMUNITY DEVELOPMENT COMMISSION

TWELFTH STREET WIDENING EUCLID AVE TO ATKINSON		INDEX NO.	SHEET 16 OF 74 SHEETS
DETAILED GRADES FOR TWELFTH ST. AT CLAIRMOUNT AVE.		CONTRACT NO.	P.W. 6549
		ASSIGNMENT NO.	AO. 2091
		DATE	2-18-74