

NO.	DATE	DESCRIPTION
1		
2		
3		
4		
5		
6		
7		
8		
9		
10		
11		

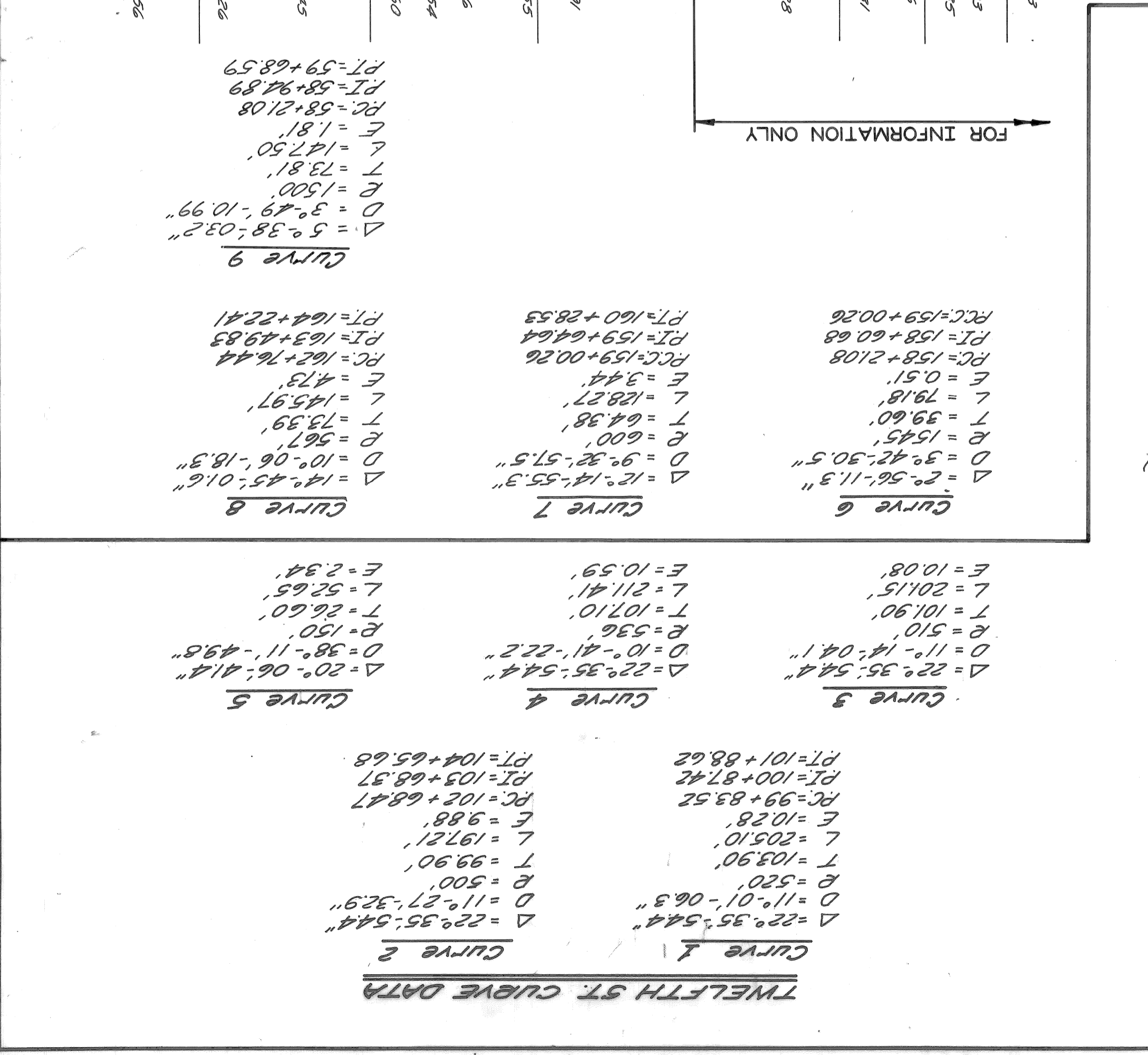
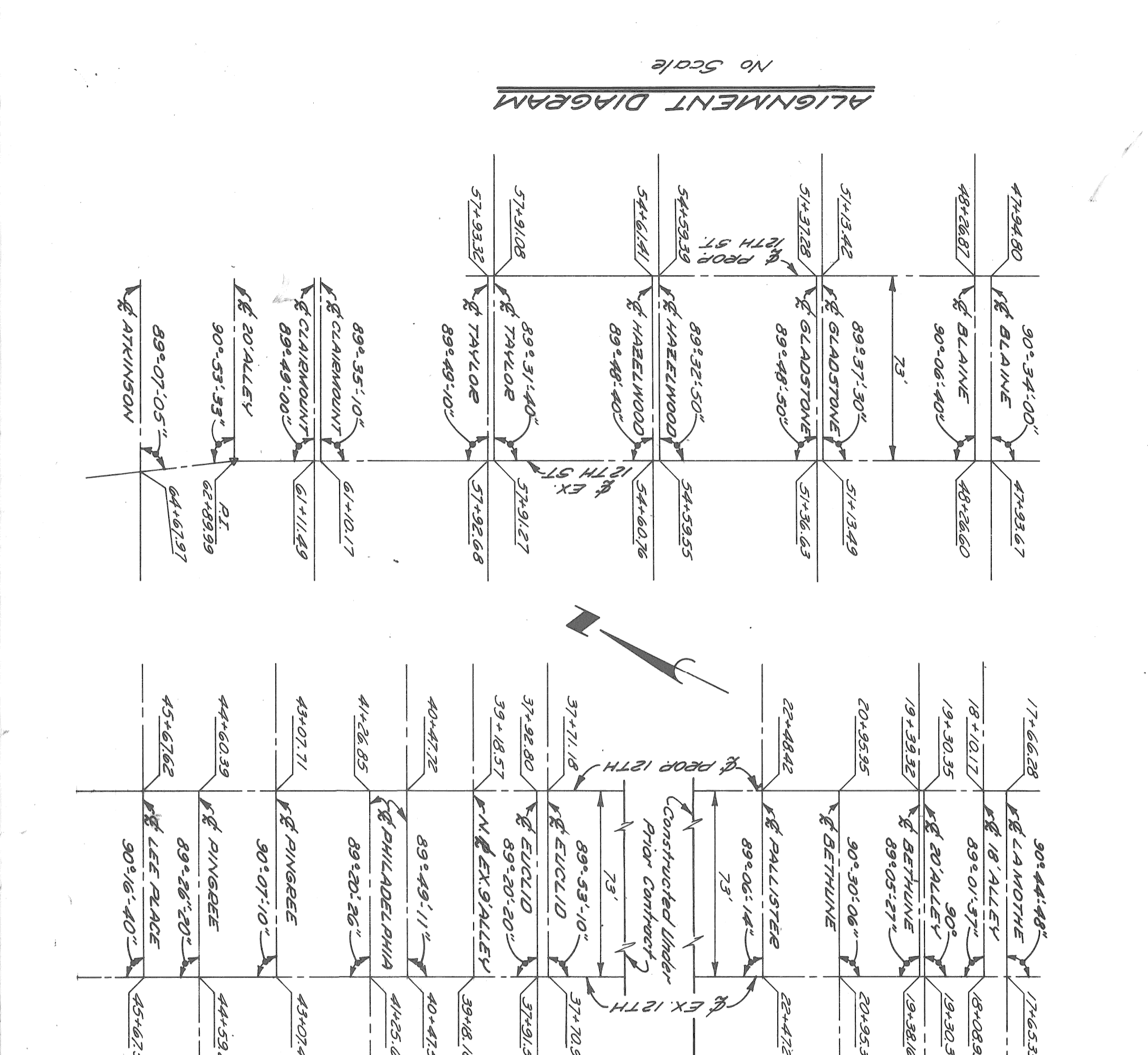
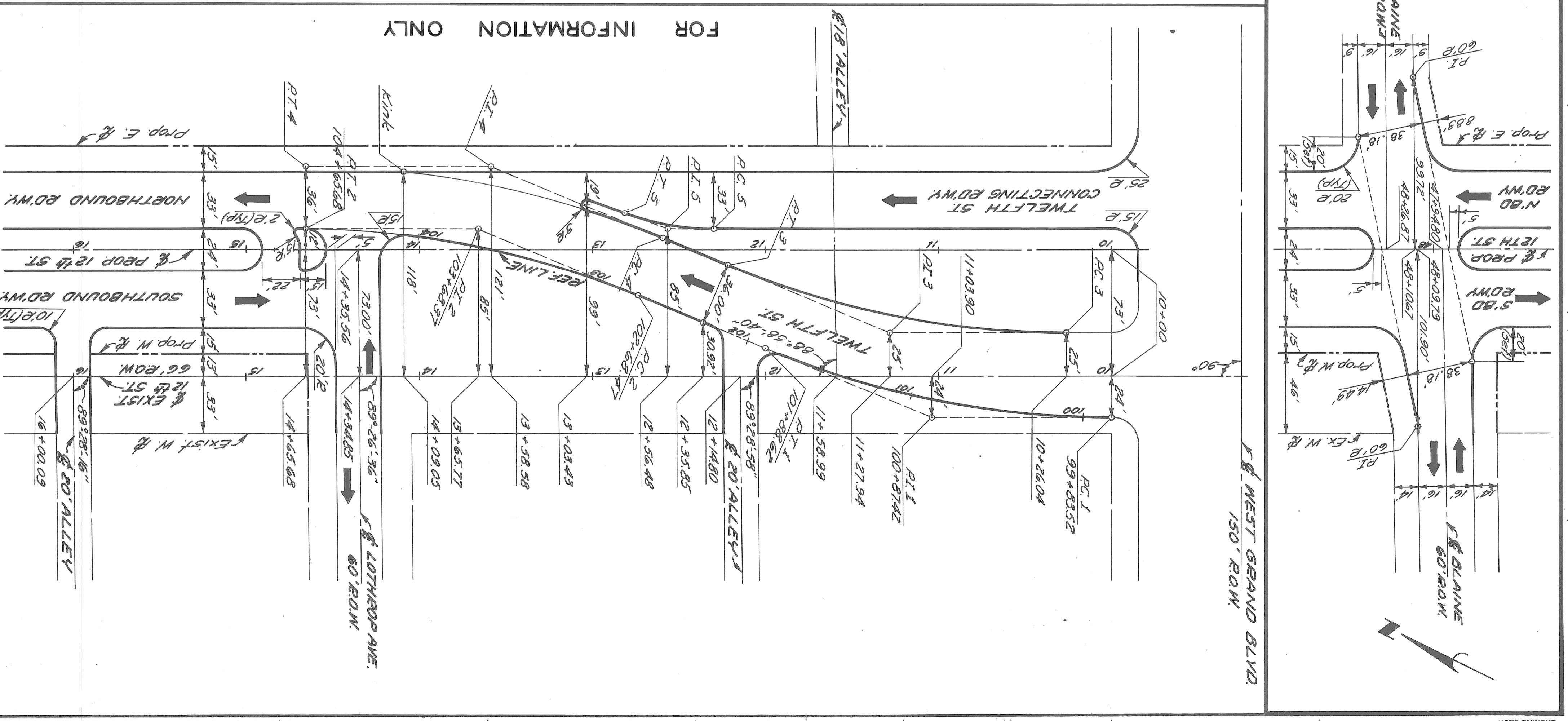
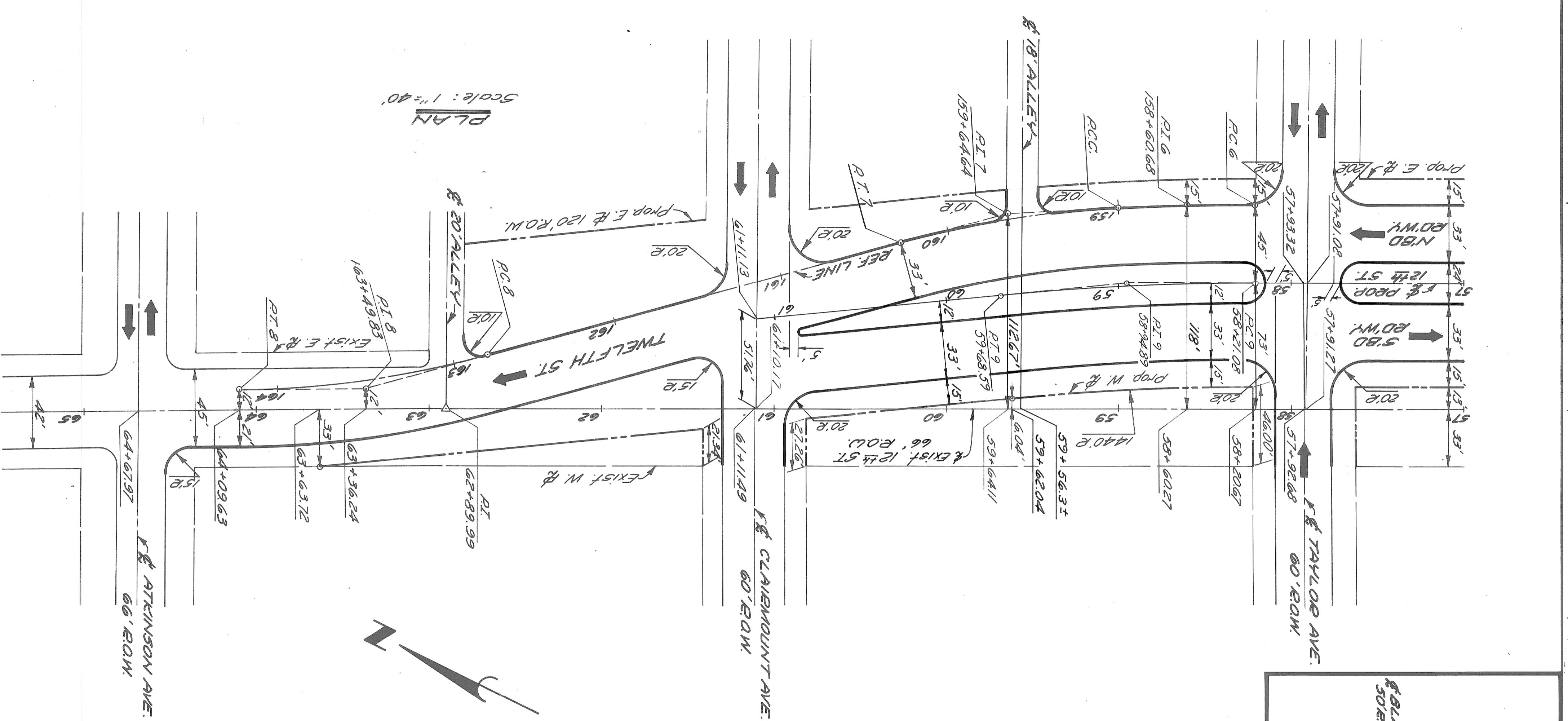
DESIGNED BY	M.A.P.
DRAWN BY	
TRACED BY	
CHECKED BY	R.A.C.

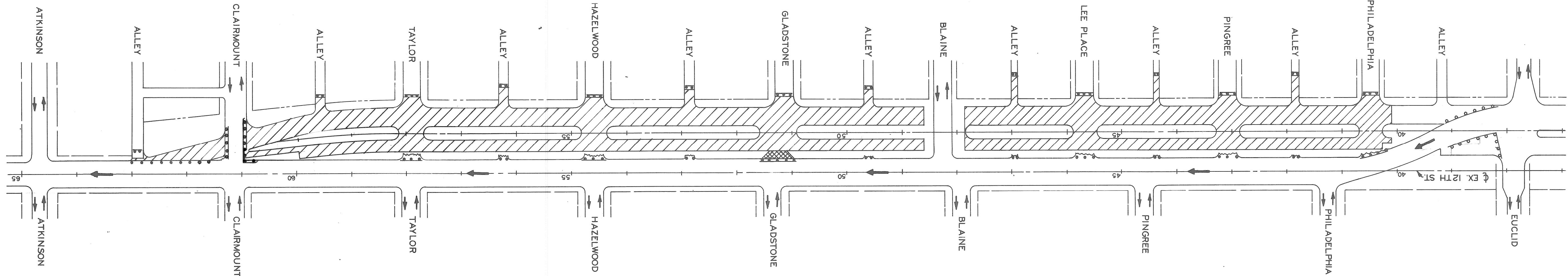
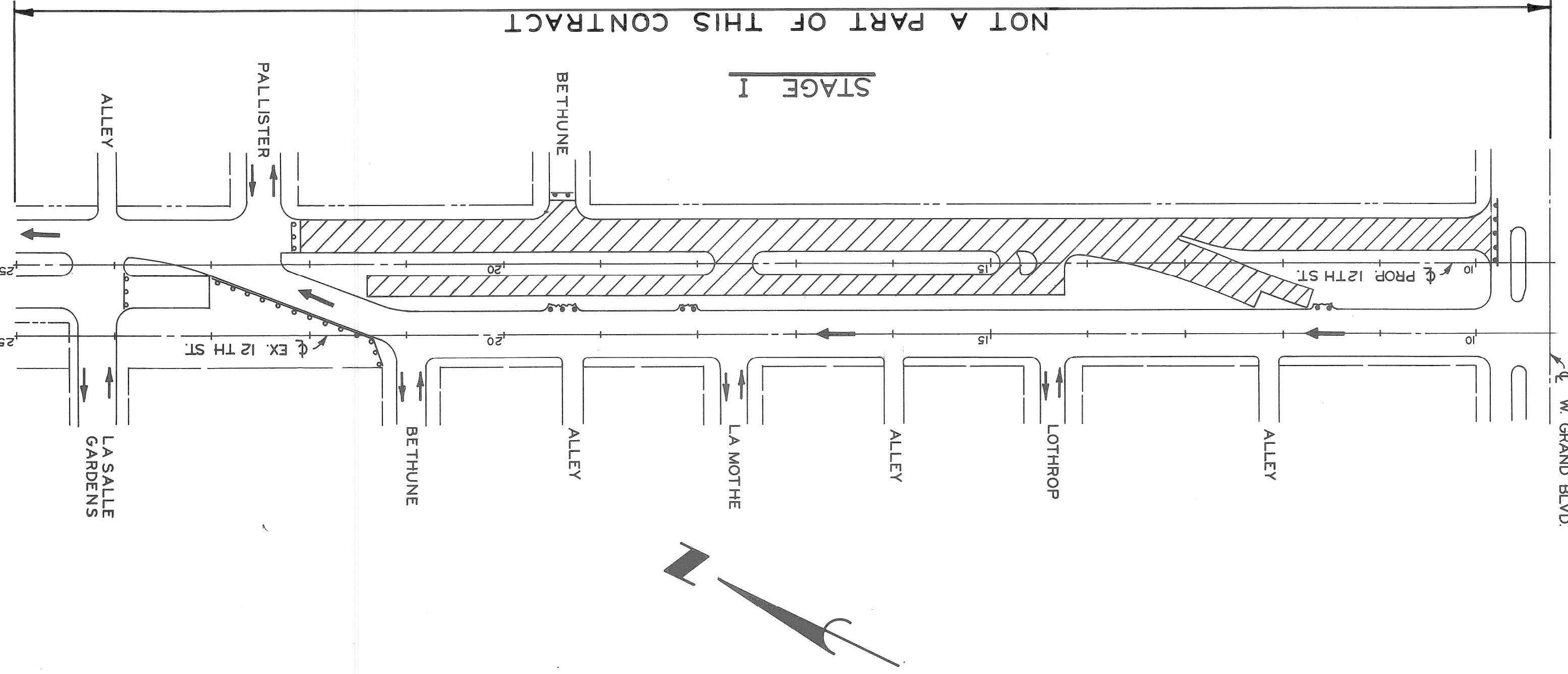
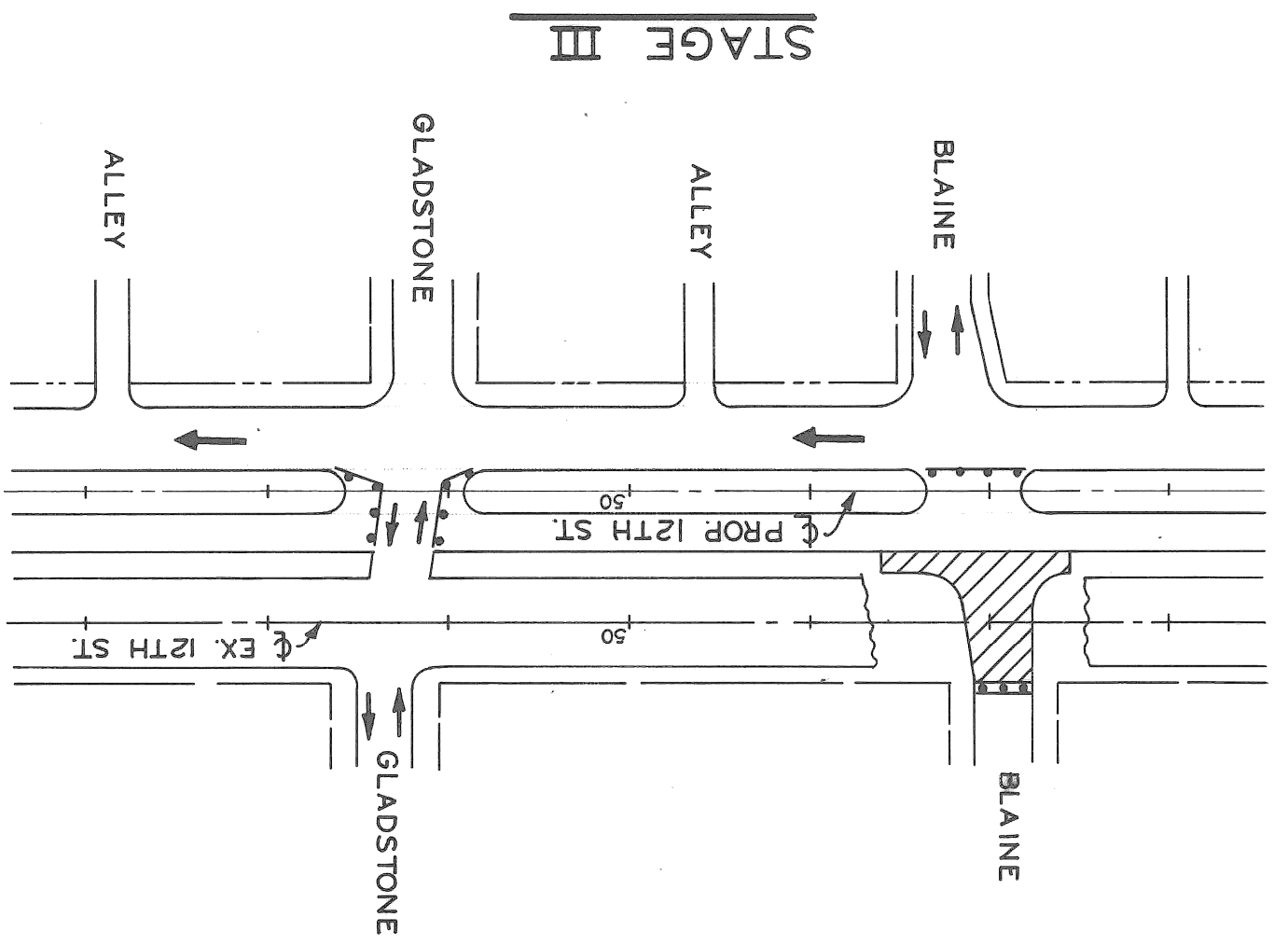
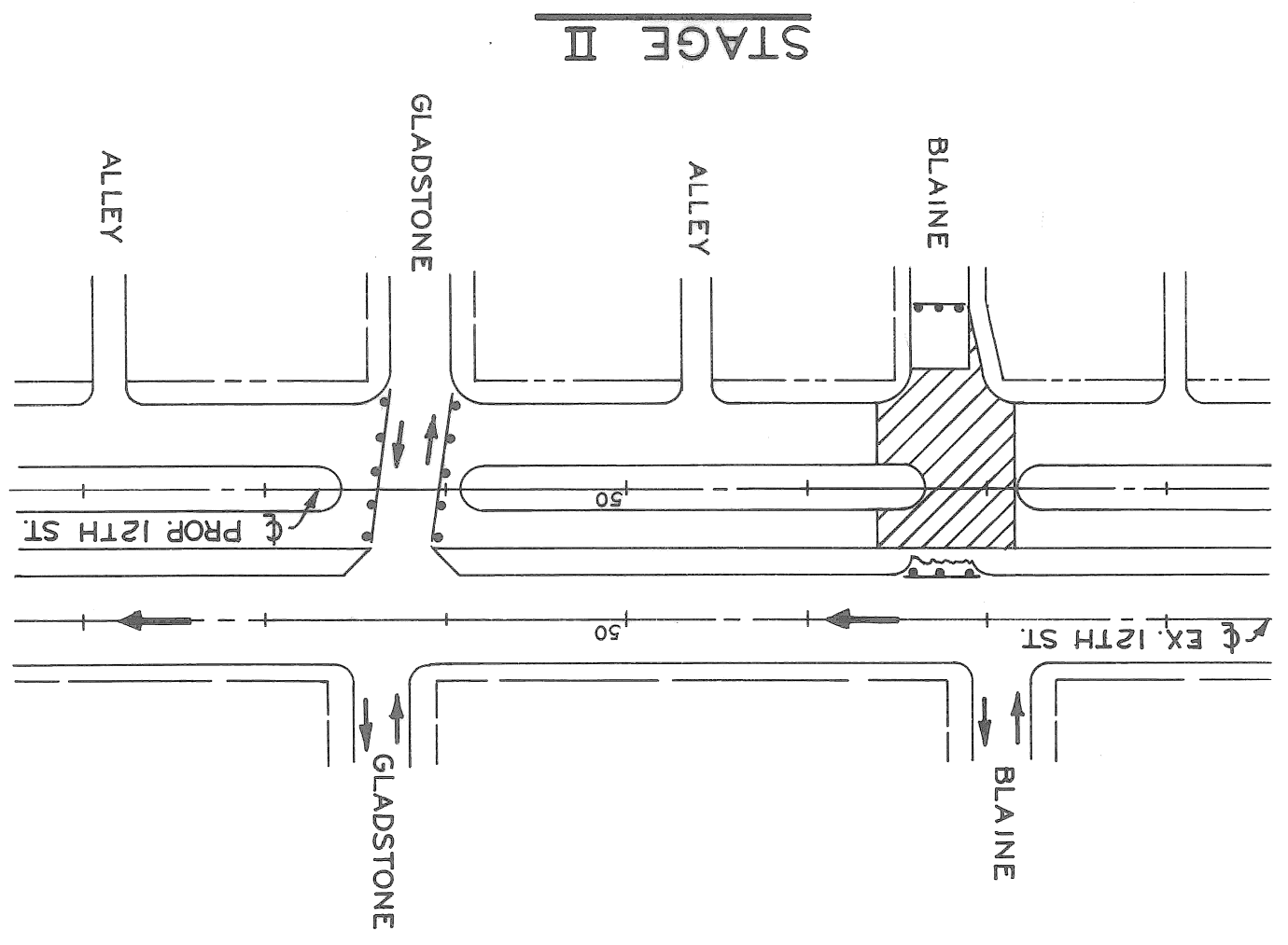
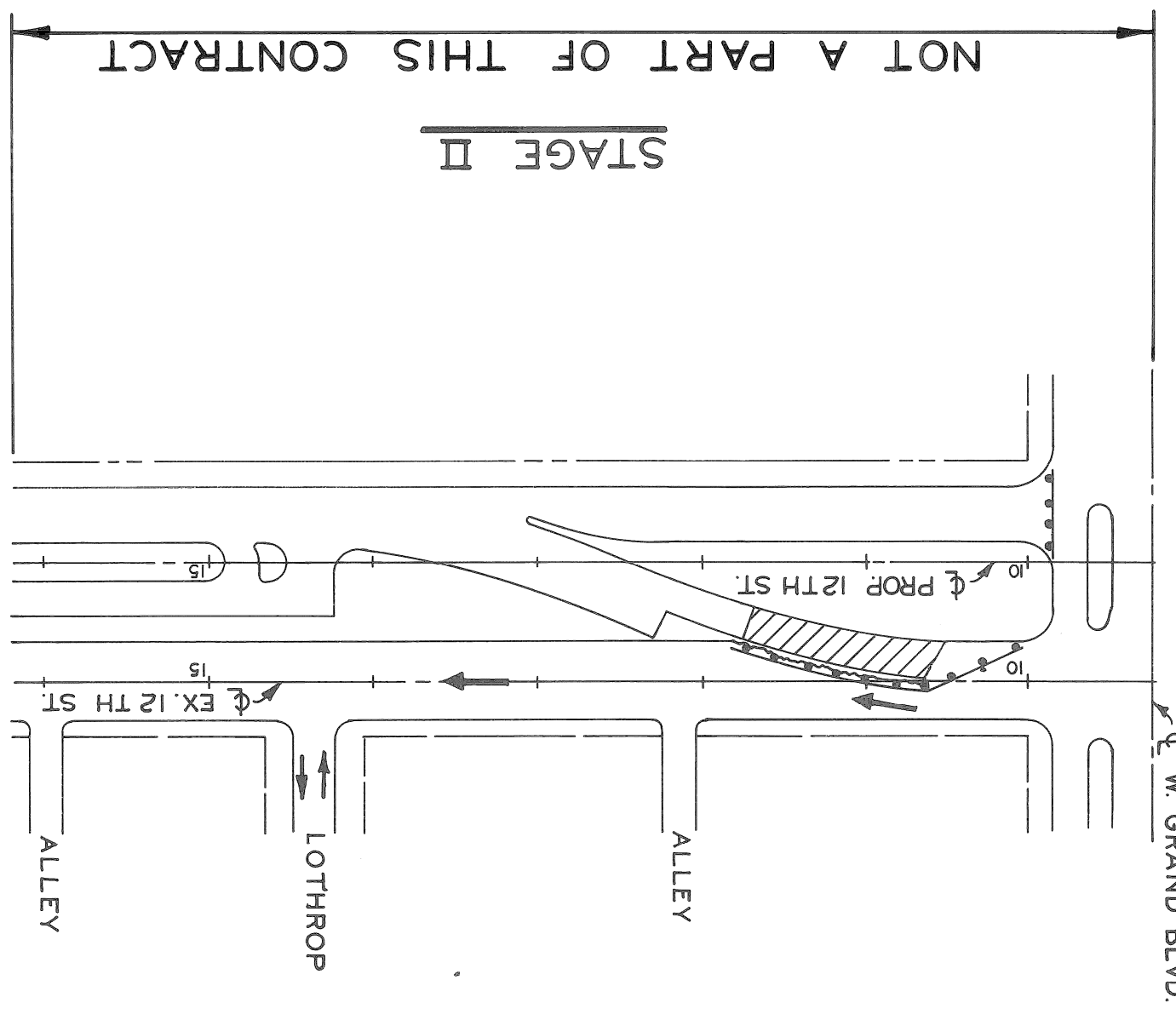
APPROVED: *Blair E. [Signature]*
 ENGINEER OF EXPRESSWAYS

CITY OF DETROIT
 DEPARTMENT OF PUBLIC WORKS
 CITY ENGINEERS OFFICE
 FOR
 COMMUNITY DEVELOPMENT COMMISSION

TWELFTH STREET WIDENING
 ALIGNMENT TO ATKINSON

SHEET OF 74
CONTRACT NO. P.W.6549
ASSIGNMENT NO. A.O.2091
DATE 2-18-74





LEGEND

- PERMANENT PAVEMENT
- TEMPORARY PAVEMENT (8" UNIF.-NON REINF.)
- TEMP SINGLE BEAM BARRIEL BARRICADE (INCIDENTAL)
- BARRIEL BARRICADE (INCIDENTAL)
- SINGLE BEAM BARRIEL BARRICADE (EXISTING)
- PROPOSED CONCRETE CURRB

NOTE:
Approximately 16 Test Cores will be needed for this contract.

DESIGNED BY	M.A.P.
DRAWN BY	
TRACED BY	
CHECKED BY	R.A.C.

APPROVED:
Allen E. Rogers
ENGINEER OF EXPRESSWAYS

CITY OF DETROIT
DEPARTMENT OF PUBLIC WORKS
CITY ENGINEERS OFFICE
FOR
COMMUNITY DEVELOPMENT COMMISSION

TWELFTH STREET WIDENING
EUCLID AVE. TO ATKINSON
CONSTRUCTION SEQUENCE

SHEET 5 OF 74 SHEETS
CONTRACT NO. RW.6549
ASSIGNMENT NO. AO.2091
DATE 2-18-74

REVISIONS LOCATED BY COORDINATES ON SHEET	
DESCRIPTION	
DATE	
APP'D	
CHK'D	
DATE	