

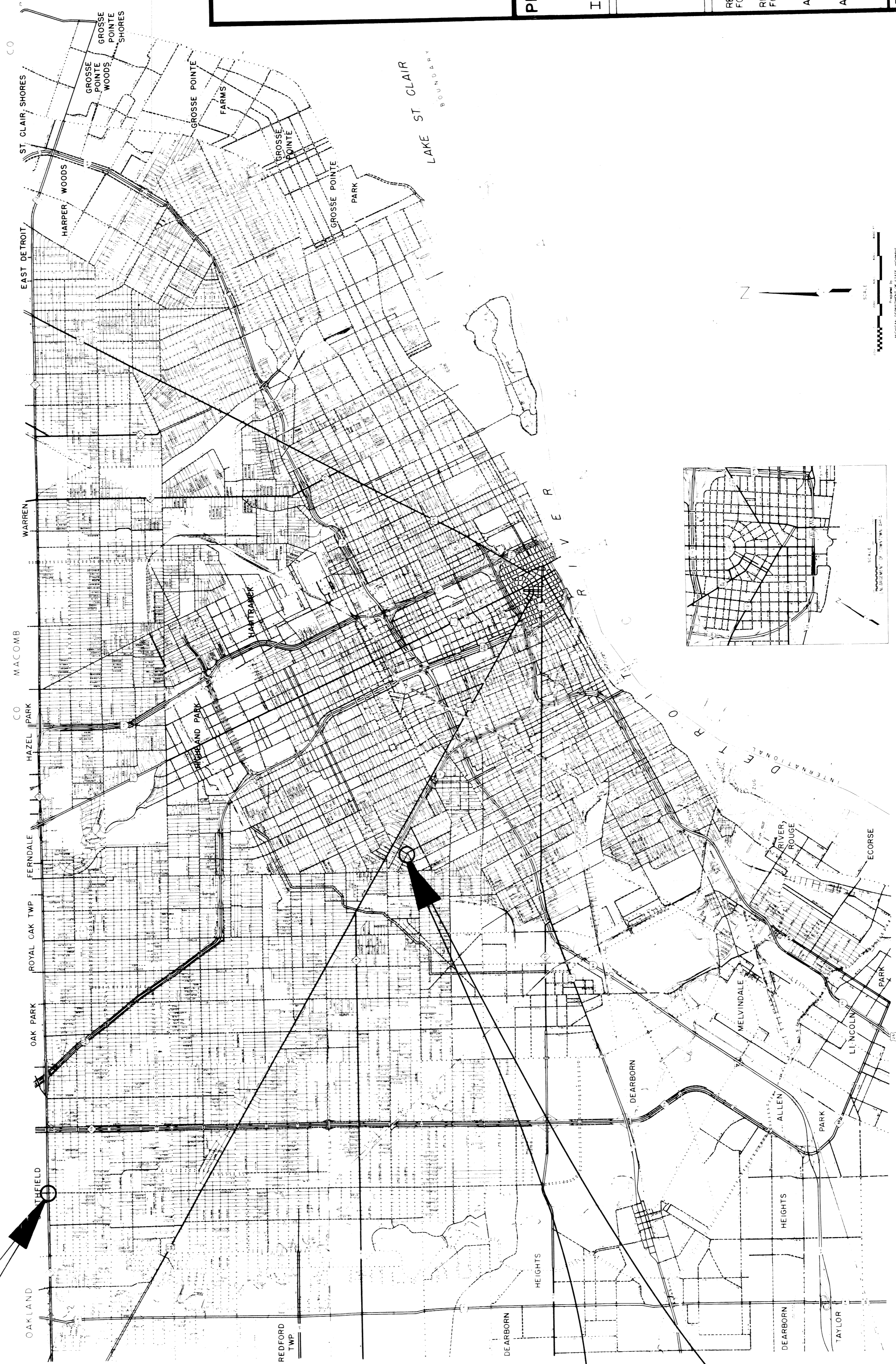
**CITY OF DETROIT  
DEPARTMENT OF PUBLIC WORKS**  
IN CO-OPERATION WITH  
**MICHIGAN DEPARTMENT OF STATE HIGHWAYS**  
AND  
**FEDERAL HIGHWAY ADMINISTRATION**

PLAN AND PROFILE OF PROPOSED

**FEDERAL AID TOPICS PROJECT NO. MICHIGAN T 4000-28 AWP 3**  
**T 4000-29 AWP 4**

EVERGREEN  
AT 8 MILE,  
SEE SHEET  
No. 2

JOY  
-NORTHFIELD-  
DAILEY, SEE  
SHEET  
No. 3



PREPARED UNDER SUPERVISION OF  
*Alan E. Pagan*  
REGISTERED PROFESSIONAL ENGINEER REGISTRATION NO. 9201

CITY OF DETROIT ORGANIZATION  
DETROIT, MICHIGAN ADDRESS  
(SEAL)

PROJECT: RIGHT TURN LANE - CONTRACT NO. EVERGREEN AT 8 MILE JOY - NORTHFIELD - DAILEY INTERSECTION IMPROVEMENT P.W. 6522

PLANS PREPARED BY  
DEPARTMENT OF PUBLIC WORKS  
CITY ENGINEERS OFFICE

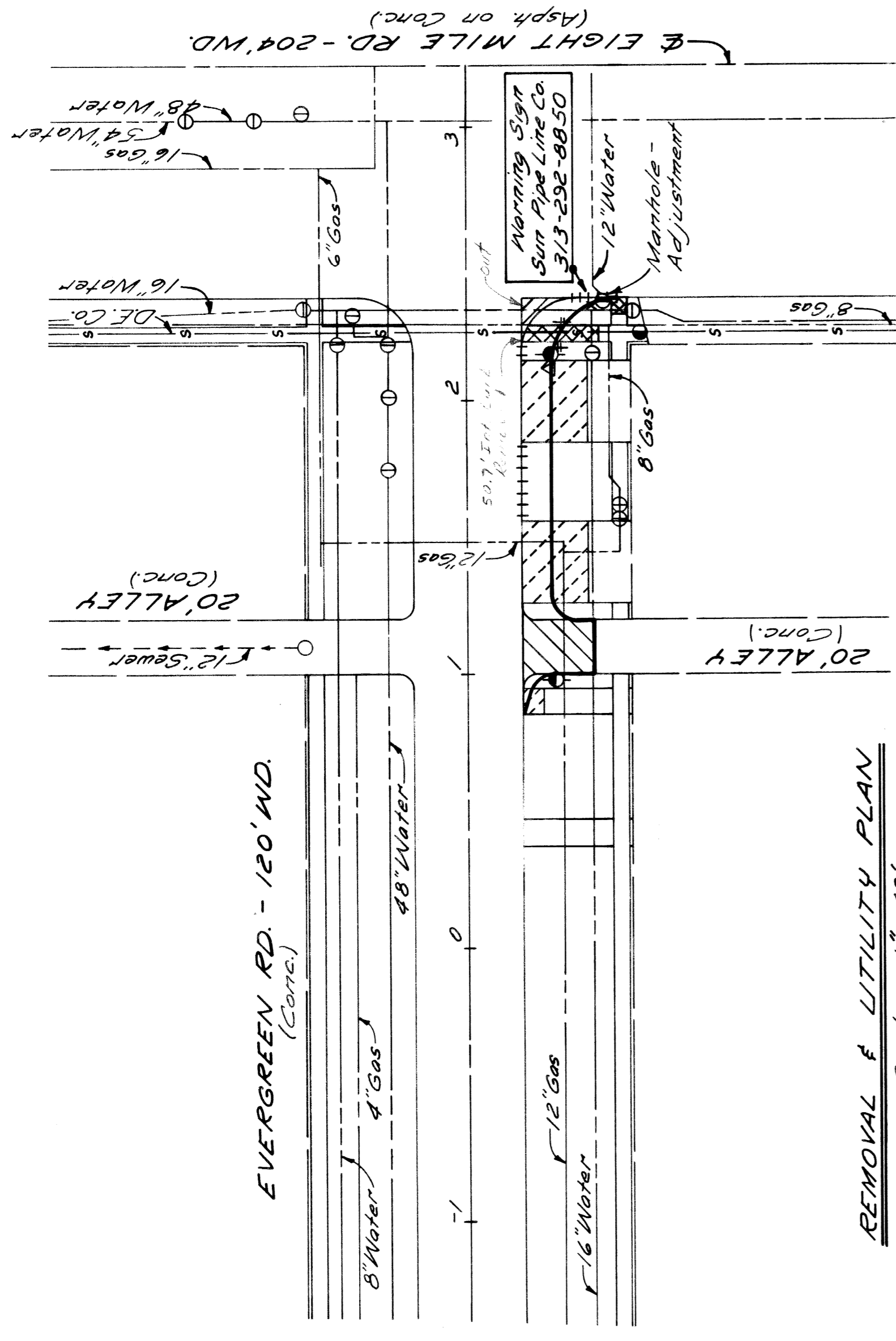
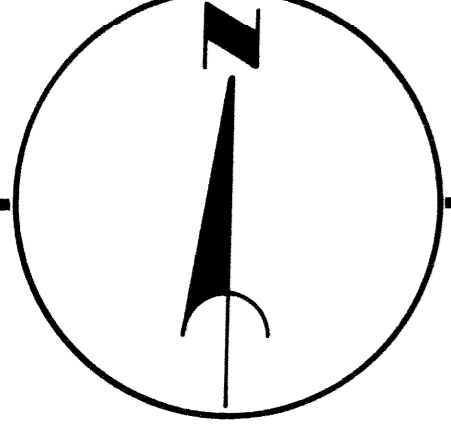
RECOMMENDED FOR APPROVAL  
ENGINEER OF INSPECTION  
*Alan E. Pagan*  
HIGHWAY ENGINEER  
DATE: 12/14/72

RECOMMENDED FOR APPROVAL  
ASSOCIATE CITY ENGINEER  
DATE

APPROVED  
CITY ENGINEER  
DATE

DATE DEC. 7, 1972 DRWG. NO. 1 OF 4

P.B.M. #115-253 Elev. 178.908 S.E.  
Corner Eight Mile Rd. & Evergreen Rd.

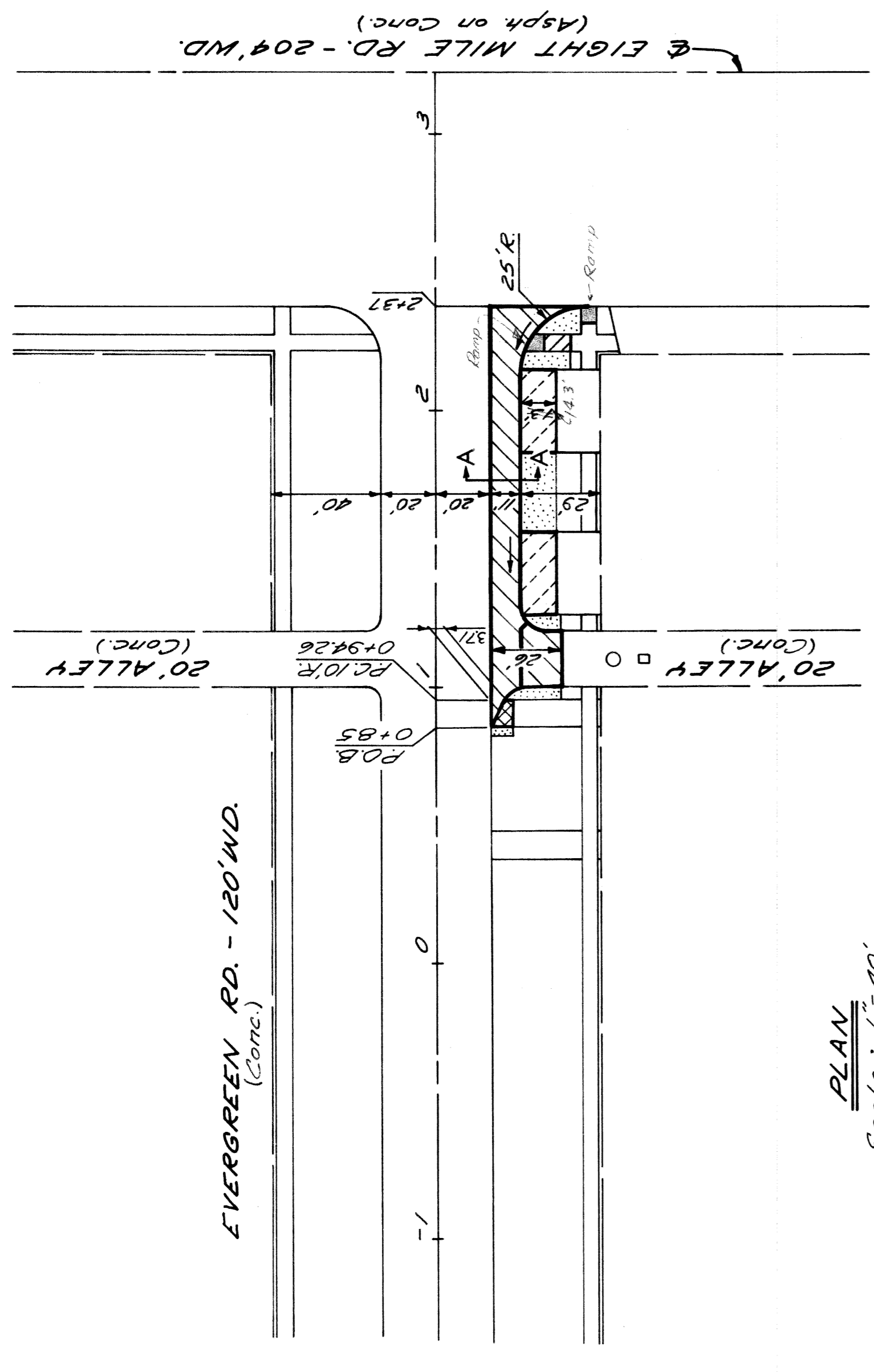


**REMOVAL & UTILITY PLAN**  
Scale: 1" = 40'

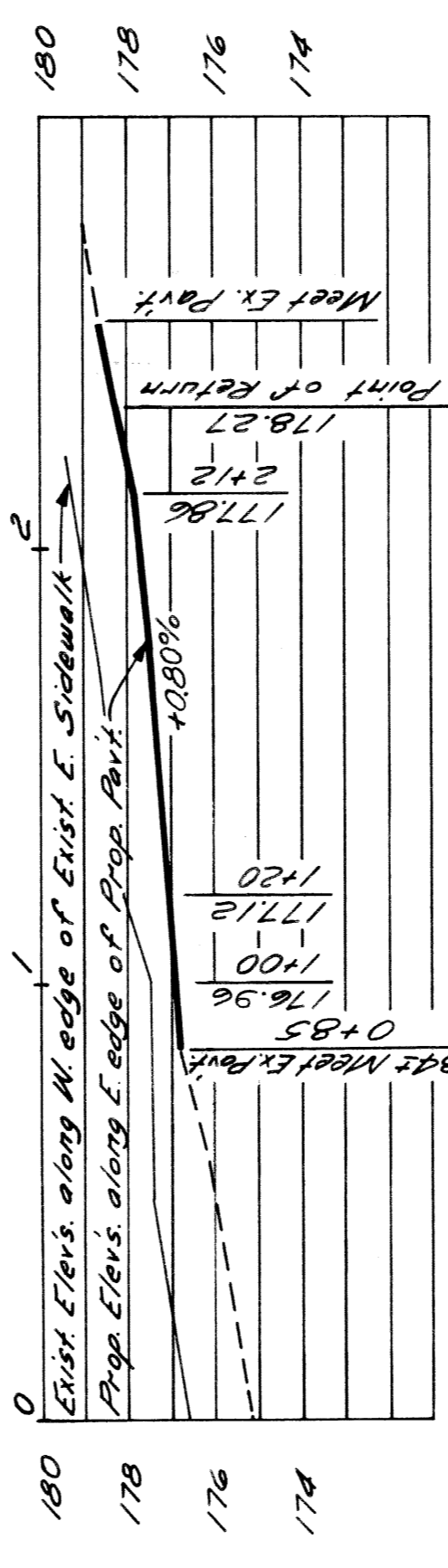
**LEGEND**

- DRIVEWAY REMOVAL
- SIDEWALK REMOVAL
- ALLEY PAVEMENT REMOVAL
- STREET PAV'T. REMOVAL (UNREINF.)
- +++++ SEPARATE TYPE CURB REMOVAL (UNREINF.) AND/OR INTEGRAL TYPE CURB REMOVAL.

**NOTES:**  
For Utility Legend, See City Standards.



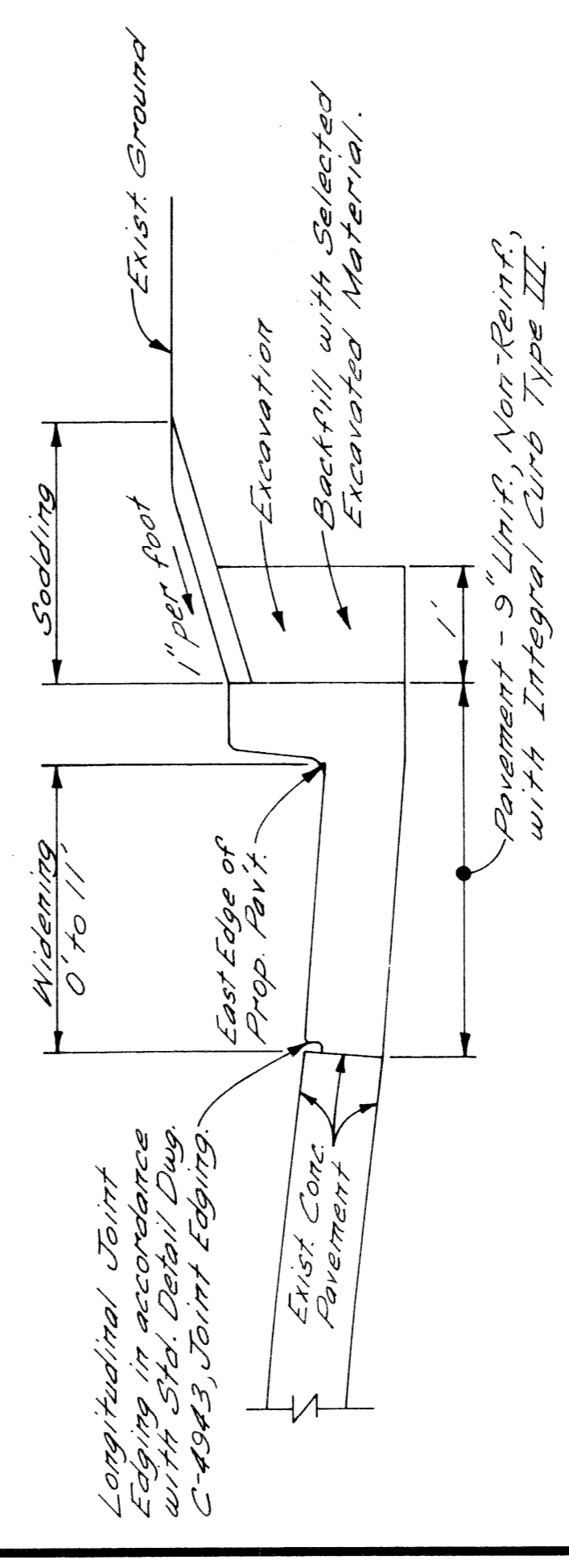
**PLAN**  
Scale: 1" = 40'



**PROFILE**  
Scale: Hor. 1" = 40',  
Vert. 1" = 4'

**LEGEND**

- SODDING
- SIDEWALKS - 6"
- DRIVEWAYS - 8" UNIF, NON - REINF.
- SIDEWALKS - 4"
- DRIVEWAYS - 6" UNIF, NON - REINF.
- PAVEMENT - 9" UNIF, NON - REINF. WITH INTEGRAL CURB TYPE III

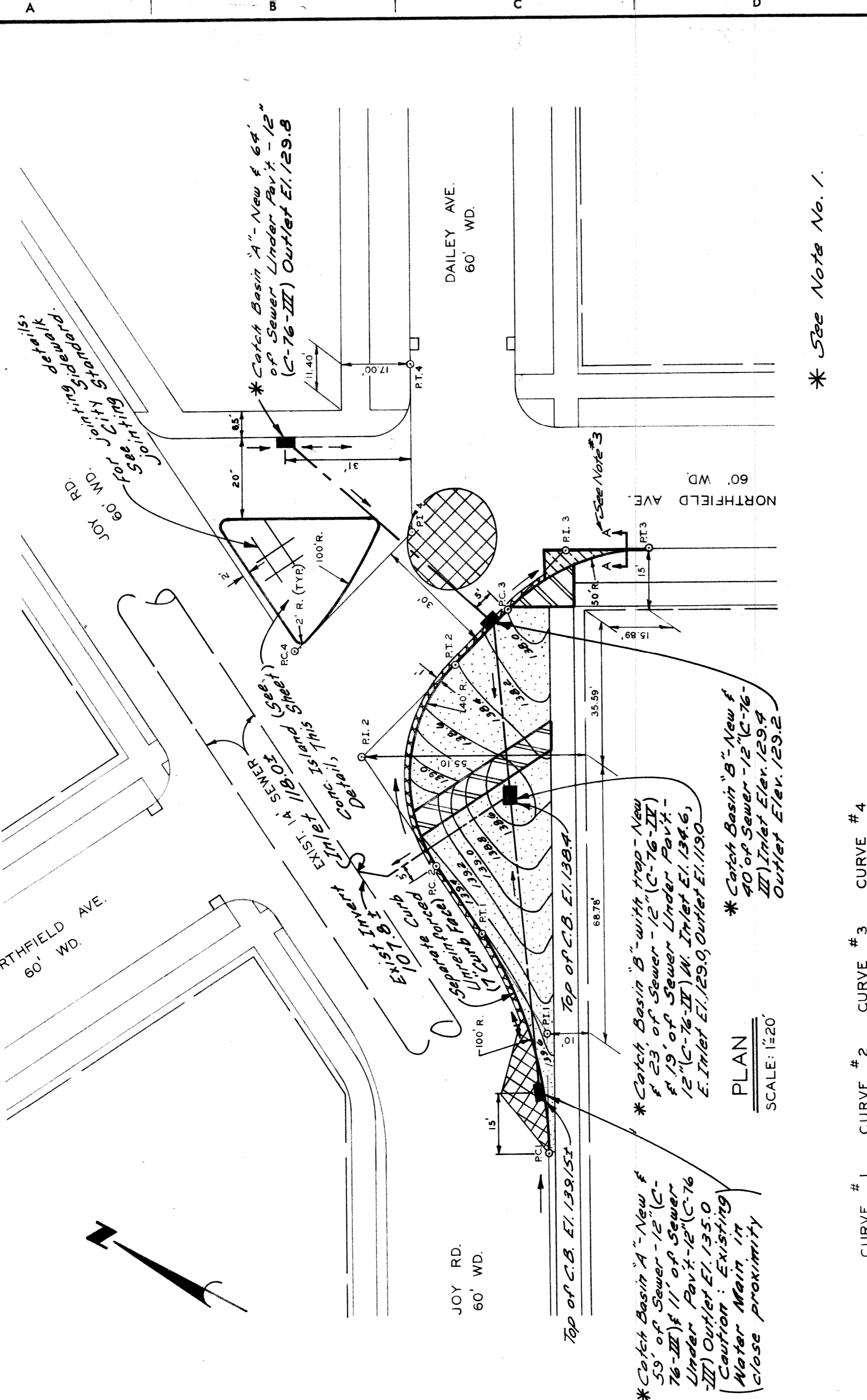
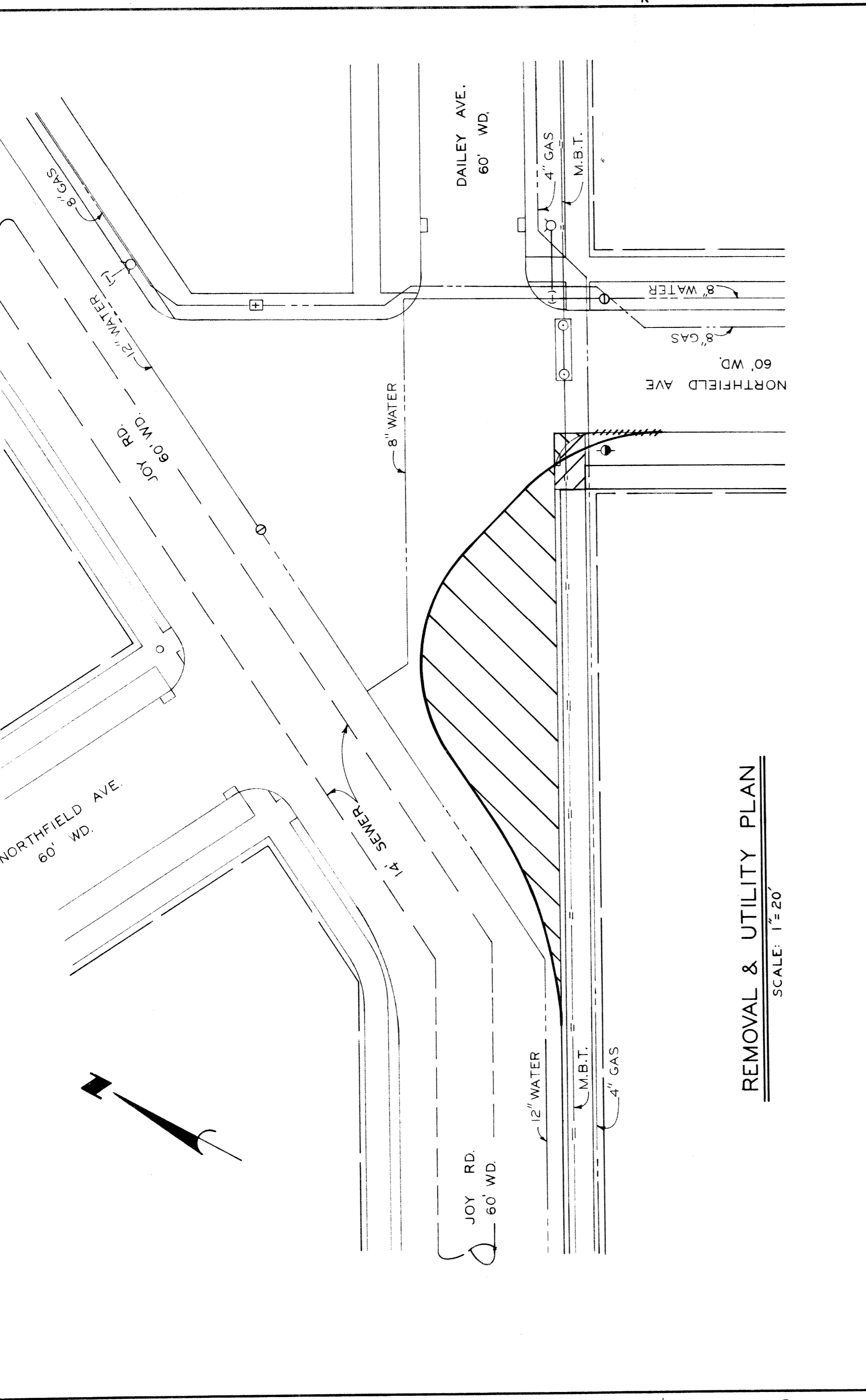


**SECTION A-A**  
No Scale

SHEET 2 OF 4 SHEETS		CONTRACT NO. PW. 6522		DATE DEC. 7, 1972	
CITY OF DETROIT DEPARTMENT OF PUBLIC WORKS CITY ENGINEERS OFFICE			EVERGREEN RD. RIGHT TURN LANE AT WEST EIGHT MILE RD.		
DESIGNED BY	J.D.	DESIGNED BY	J.D.	DESIGNED BY	J.D.
DRAWN BY	R.B.P.	DRAWN BY	R.B.P.	DRAWN BY	R.B.P.
TRACED BY		TRACED BY		TRACED BY	
CHECKED BY		CHECKED BY		CHECKED BY	
DESCRIPTION	Revised Alignment South of Alley	DESCRIPTION	Revised Alignment South of Alley	DESCRIPTION	Revised Alignment South of Alley
REVISED BY	J.D. R.B.P.	REVISED BY	J.D. R.B.P.	REVISED BY	J.D. R.B.P.
LOCATED BY		LOCATED BY		LOCATED BY	

C.B.M. Elev. 139.79 Arrow on Hydrant  
S.E. Corner of Northfield & Dailey.

P.B.M. #16-253 Elev. 139.057 C. of D. Monument  
4'S. of N. E. Joy & 4' M. of E. E. Northfield.



**NOTES:**

- Sewer - 12" (C-76-III) and Sewer - 12" (C-76-II) shall be paid for as Sewer - 12" Sewer Under Pavement - 12" (C-76-III) and Sewer Under Pavement - 12" (C-76-II) shall be paid for as Sewer Under Pavement - 12" for as Sewer Under Pavement - 12".
- Backfill under proposed sodded area shall be Selected Excavated Material as specified in City of Detroit Standard Specification 3.II.2A. It will be paid for in cubic yards of volume, compacted in place, at the Contract Unit Price for Selected Excavated Material.
- For Section AA, see Standard Drawing C-4390. This curb is included in the quantity for, and shall be paid for as Separate Curb - Reinforced - Type II Modified.

**CONCRETE ISLAND DETAIL**  
NO SCALE

**REVISIONS LOCATED BY COORDINATES ON SHEET**

NO.	DESCRIPTION	BY	DATE

**APPROVED:** *[Signature]*  
ENGINEER OF EXPRESSWAYS

**DESIGNED BY:** M.S./J.D.  
**DRAWN BY:** M.S./J.D.  
**TRACED BY:** R.B.P.  
**CHECKED BY:** R.B.P.

**CITY OF DETROIT**  
DEPARTMENT OF PUBLIC WORKS  
CITY ENGINEERS OFFICE

**JOY RD. - NORTHFIELD AVE. - DAILEY AVE.**  
INTERSECTION IMPROVEMENT

SHEET 3 OF 4 SHEETS  
CONTRACT NO. P.W. 6522  
DATE DEC. 7, 1972

ITEM NO.	DESCRIPTION OF ITEM	AS PER PLANS			AS CONSTRUCTED		
		SHEET #2	SHEET #3	TOTAL	PAY UNIT	SHEET #2	SHEET #3
1.	Sewer - 12"	---	122	122	L. Ft.	---	---
2.	Sewer Under Pav't - 12"	---	94	94	L. Ft.	---	---
3.	Catch Basin "A" - New	---	2	2	Each	---	---
4.	Catch Basin "B" - New	---	1	1	Each	---	---
5.	Catch Basin "B" with Trap - New	---	1	1	Each	---	---
6.	Manhole Adjustment	1	---	1	Each	---	---
7.	Excavation	226	24	250	Cu Yds.	---	---
8.	Selected Excavated Material	---	131	131	CL Yds.	---	---
9.	Street Pav't Removal - Unreinf.	11	270	281	Sq. Yds.	---	---
10.	Alley Pavement Removal	59	---	59	Sq. Yds.	---	---
11.	Separate Type Curb Removal - Unreinf.	16	16	32	L. Ft.	---	---
12.	Integral Type Curb Removal	82	---	82	L. Ft.	---	---
13.	Sidewalk Removal	198	83	281	Sq. Ft.	---	---
14.	Driveway Removal	1750	---	1750	Sq. Ft.	---	---
15.	Pav't - 9" Unif. - Non Reinf. with Integral Curb Type III	298	---	298	Sq. Yds.	---	---
16.	Conc. Base Pav't - Unreinf. - 9"	---	9	9	Sq. Yds.	---	---
17.	Strip and Adjust Asphalt Surface	---	81	81	Sq. Yds.	---	---
18.	Bituminous Bond Coat	---	2	2	Gal.	---	---
19.	Binder Course Mixture	---	0.5	0.5	Tons	---	---
20.	Nearing Surface Mixture	---	0.5	0.5	Tons	---	---
21.	Separate Curb - Unreinf. - Type II Mod.	---	191	191	L. Ft.	---	---
22.	Sidewalk - 4"	60	327	387	Sq. Ft.	---	---
23.	Sidewalk - 6"	72	---	72	Sq. Ft.	---	---
24.	Conc. Island	---	716	716	Sq. Ft.	---	---
25.	Driveways - 6" Unif. - Non Reinf.	200	---	200	Sq. Ft.	---	---
26.	Driveways - 8" Unif. - Non Reinf.	780	---	780	Sq. Ft.	---	---
27.	Sooiding	121	238	359	Sq. Yds.	---	---
28.	Maintaining Traffic (8 Mile - Evergreen)	Lump Sum	Lump Sum	Lump Sum	Lump Sum	---	---
29.	Maintaining Traffic (Joy - Northfield - Dailey)	Lump Sum	Lump Sum	Lump Sum	Lump Sum	---	---

APPROVED:		DESIGNED BY		DRAWN BY		TRACED BY		CHECKED BY	
		J.D.		R.B.P.					
ENGINEER OF EXPRESSWAYS									
CITY OF DETROIT		RIGHT TURN LANE - EVERGREEN AT 8 MILE		JOY - NORTHFIELD - DAILEY INTERSECTION IMPROVEMENT		QUANTITY		SHEET	
DEPARTMENT OF PUBLIC WORKS									
CITY ENGINEERS OFFICE									
								DATE DEC. 7, 1972	