

CITY OF DETROIT  
 DEPARTMENT OF PUBLIC WORKS  
 CITY ENGINEERS OFFICE

PLANS FOR PROPOSED

PAVING OF MACOMB  
 CHENE TO JOSEPH CAMPAU  
 AND

PAVEMENT REMOVAL

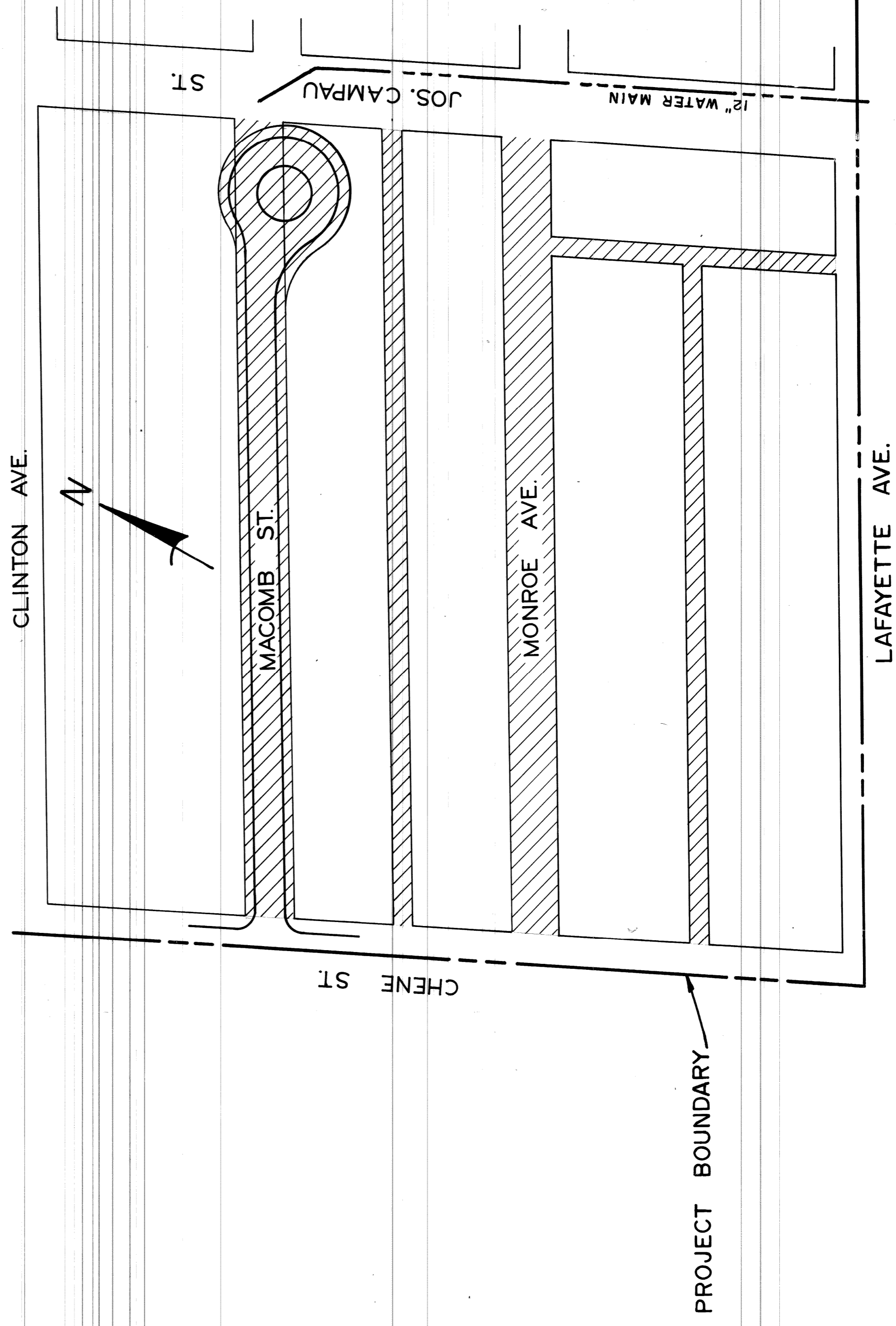
AREA BOUNDED BY CHENE

JOSEPH CAMPAU LAFAYETTE MACOMB  
 ELMWOOD PARK REHABILITATION PROJECT NO. 3  
 MICH R-123

FOR  
 COMMUNITY DEVELOPMENT COMMISSION

INDEX TO SHEETS

- |     |                                       |
|-----|---------------------------------------|
| 1   | TITLE SHEET                           |
| 2   | REMOVAL, UTILITY AND TYPICAL SECTIONS |
| 3   | PLAN AND PROFILE                      |
| 4   | PAVEMENT REMOVAL PLAN                 |
| 5   | P.L.C. PLAN                           |
| 6-9 | WATER ALTERATIONS                     |
| 10  | SEWER ALTERATIONS                     |
| 11  | QUANTITIES AND DETAILS                |
|     | P.L.C. STANDARDS                      |



A.O. 2097  
 A.O. 2098

PROJECT: PAVING OF MACOMB CHENE  
 TO JOSEPH CAMPAU AND PAVEMENT  
 REMOVAL, AREA BOUNDED BY CHENE  
 JOSEPH CAMPAU LAFAYETTE MACOMB  
 ELMWOOD PARK REHABILITATION  
 PROJECT NO. 3 MICH. R-123

CONTRACT  
 NO. PW-6518

PLANS PREPARED BY  
 DEPARTMENT OF PUBLIC WORKS  
 CITY ENGINEERS OFFICE

RECOMMENDED FOR APPROVAL	<i>R. C. Macomber</i> ENGINEER OF INSPECTION	DATE
RECOMMENDED FOR APPROVAL	<i>Alfred J. Pappas</i> HIGHWAY ENGINEER	DATE
APPROVED	<i>R. P. Kiehl</i> ASSOC. CITY ENGINEER	12-21-72 DATE
APPROVED	<i>[Signature]</i> CITY ENGINEER	12-21-72 DATE

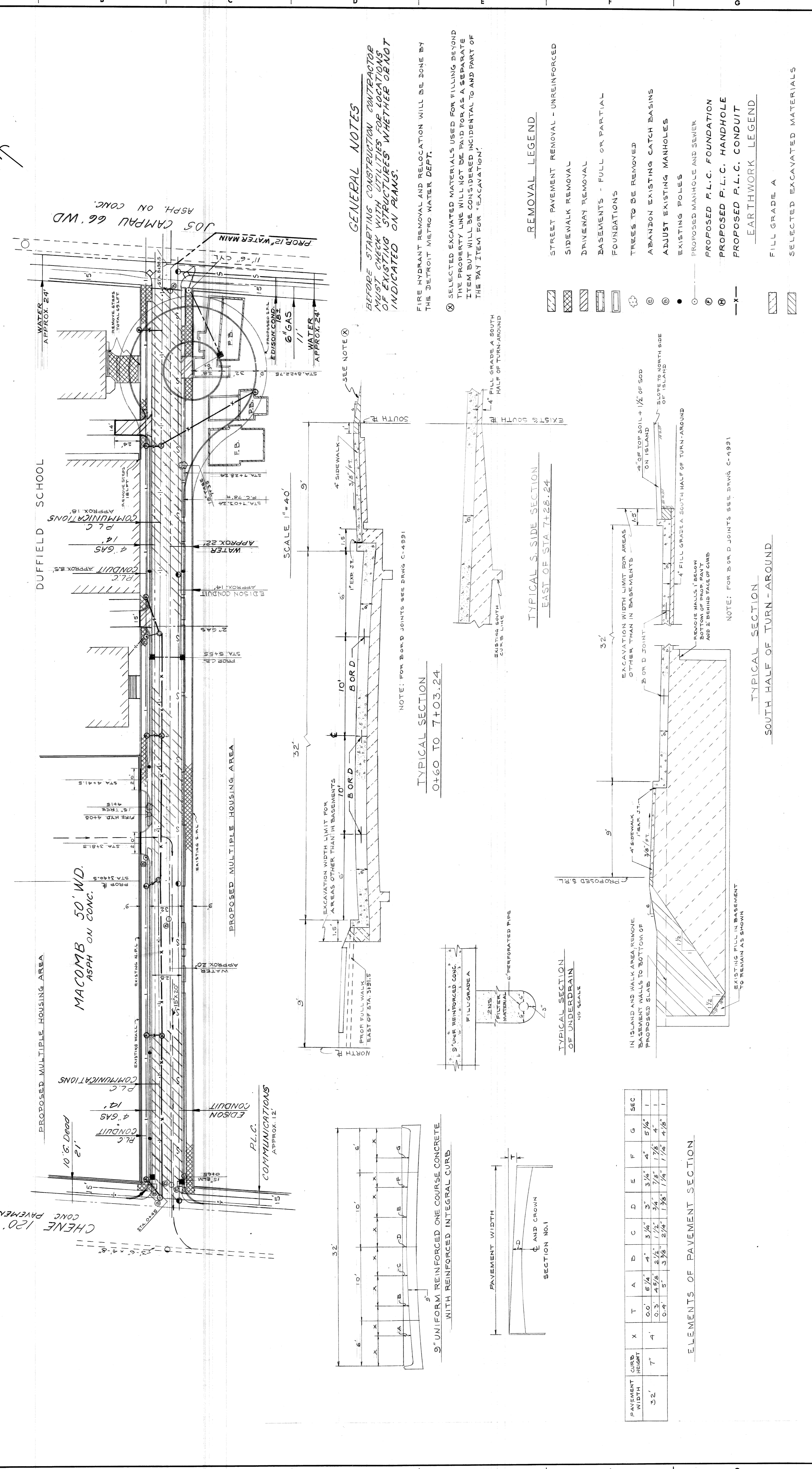
CONSTRUCTION AREA  
 PROPOSED WATER MAIN

MACOMB

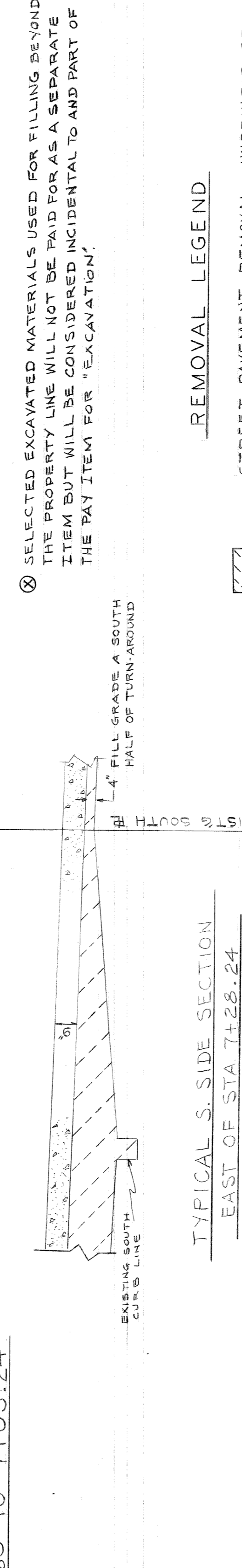
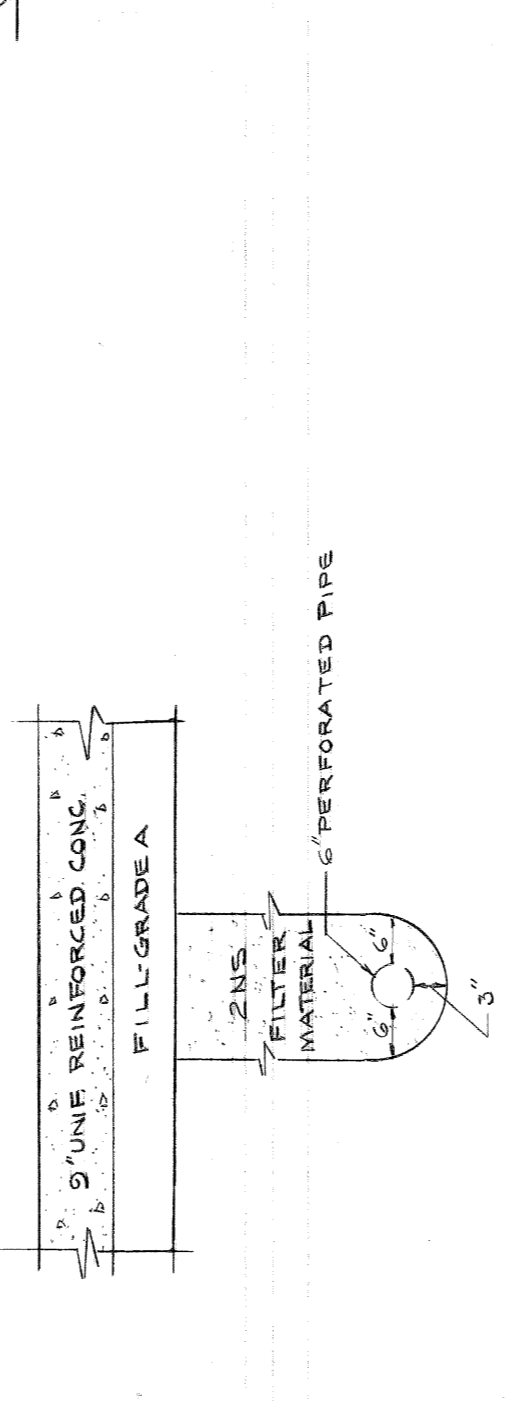
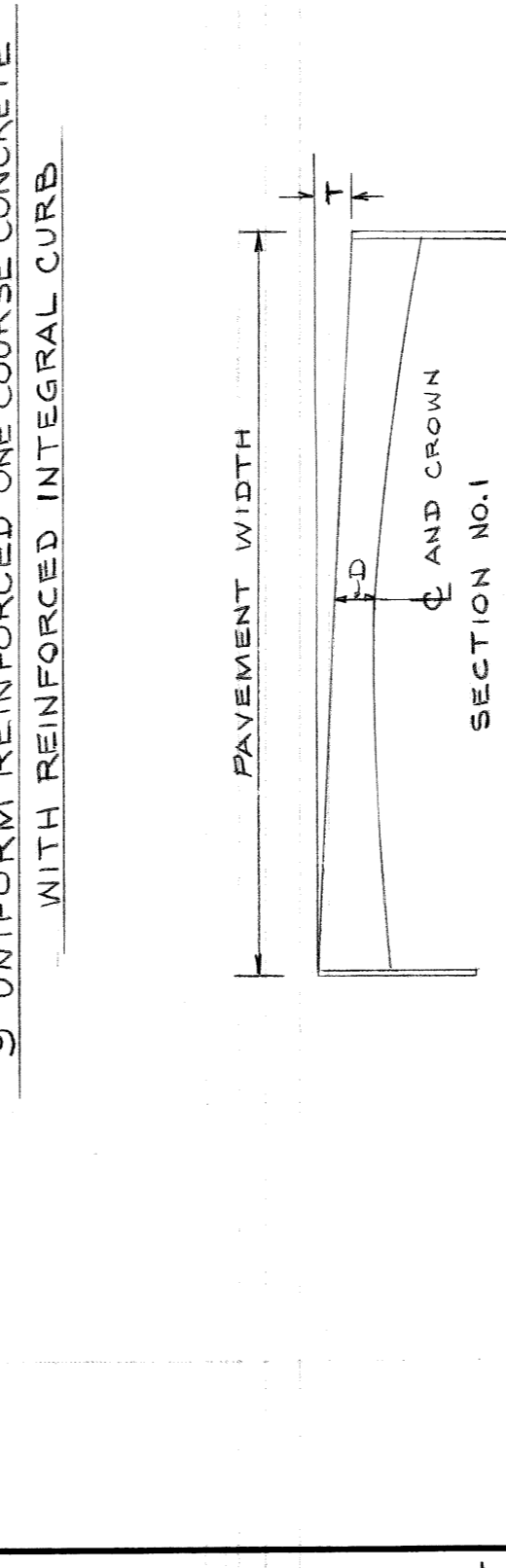
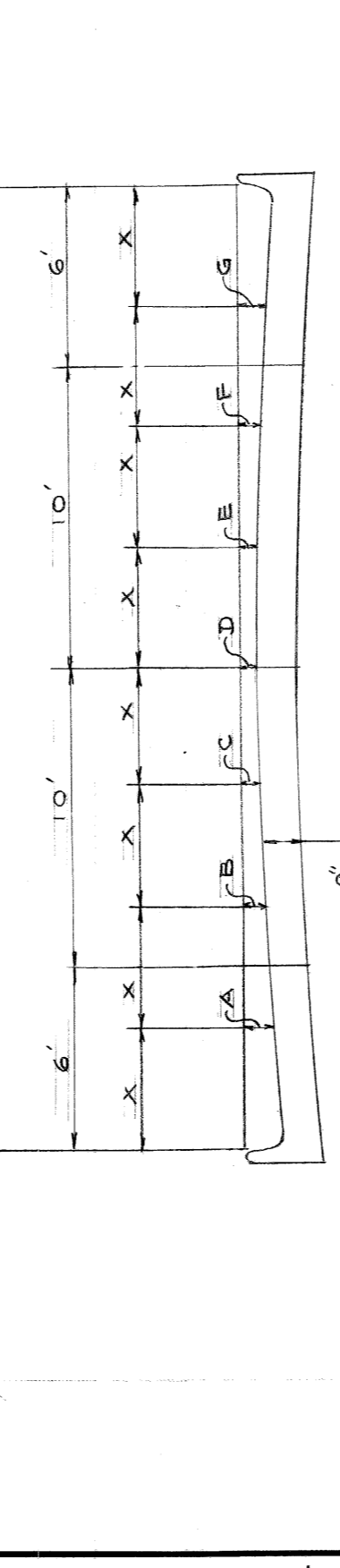
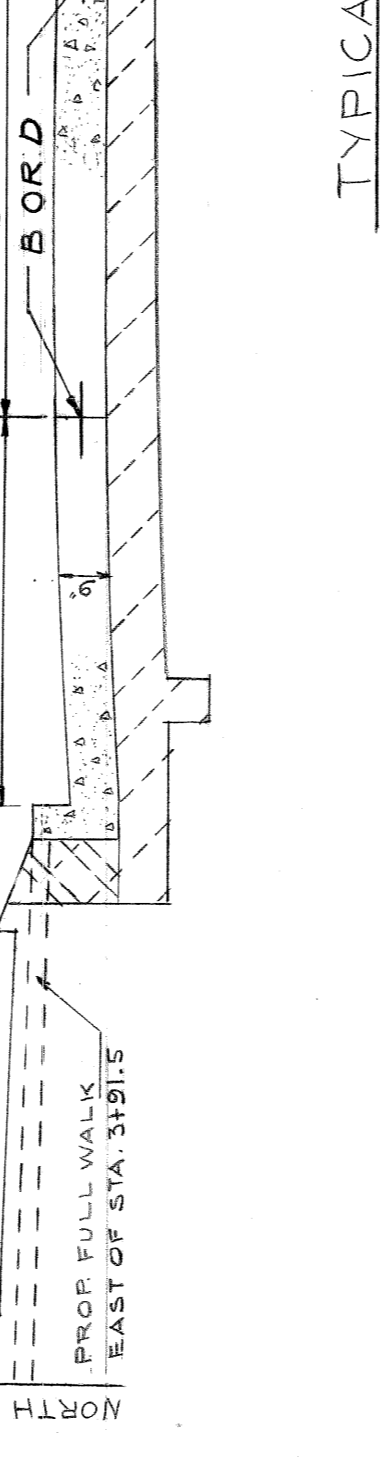
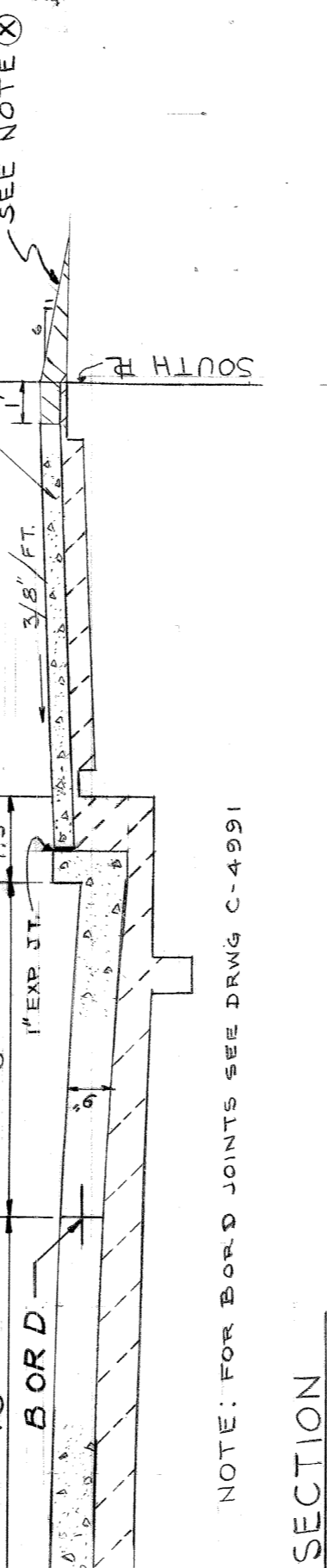
DATE 3-27-73

DRWG. NO. 1 OF 11



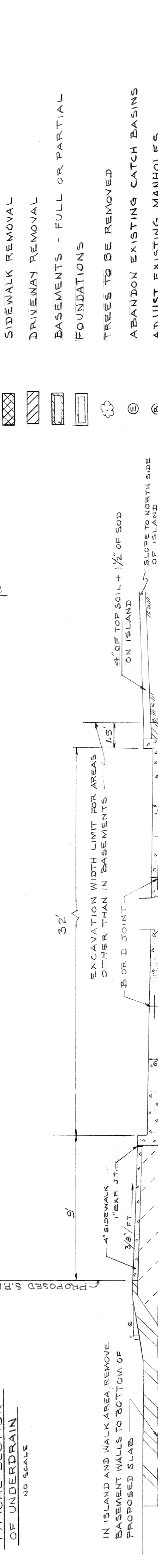


**GENERAL NOTES**  
 BEFORE STARTING CONSTRUCTION CONTRACTOR MUST CHECK WITH UTILITIES FOR LOCATIONS OF EXISTING STRUCTURES WHETHER OR NOT INDICATED ON PLANS.  
 FIRE HYDRANT REMOVAL AND RELOCATION WILL BE DONE BY THE DETROIT METRO WATER DEPT.  
 SELECTED EXCAVATED MATERIALS USED FOR FILLING BEYOND THE PROPERTY LINE WILL NOT BE PAID FOR AS A SEPARATE ITEM BUT WILL BE CONSIDERED INCIDENTAL TO AND PART OF THE PAY ITEM FOR "EXCAVATION".



**ELEMENTS OF PAVEMENT SECTION**

PAVEMENT WIDTH	CURB HEIGHT	X	T	A	B	C	D	E	F	G	SEC
32'	7"	4'	0.0'	6 1/4"	4"	3 1/4"	3"	3 1/4"	4"	5 1/4"	I
			0.3'	4 5/8"	2 1/2"	1 1/2"	3/4"	7/8"	1 7/8"	4"	I
			0.4'	5"	3 3/8"	2 1/4"	1 3/8"	1 1/4"	1 1/4"	4 1/8"	I



**REVISIONS LOCATED BY COORDINATES ON SHEET**

NO.	DESCRIPTION	DATE	BY

**APPROVED**  
 ENGINEER OF PROJECTS  
 CITY ENGINEERS OFFICE  
 FOR  
 COMMUNITY DEVELOPMENT COMMISSION

**PAVING OF MACOMB - CHENE TO JOSEPH CAMPAU**  
 PAVEMENT REMOVAL-AREA BOUNDED BY CHENE, JOSEPH CAMPAU, LAFAYETTE, MACOMB  
 ELMWOOD PARK REHABILITATION PROJECT NO. 3, MICH. R-123

**CITY OF DETROIT**  
 DEPARTMENT OF PUBLIC WORKS  
 CITY ENGINEERS OFFICE  
 FOR  
 COMMUNITY DEVELOPMENT COMMISSION

**REMOVAL, UTILITY AND TYPICAL SECTIONS**

SHEET 2 OF 11 SHEETS  
 CONTRACT PW 6518  
 ASSIGNMENT 2097  
 DATE 3-27-73







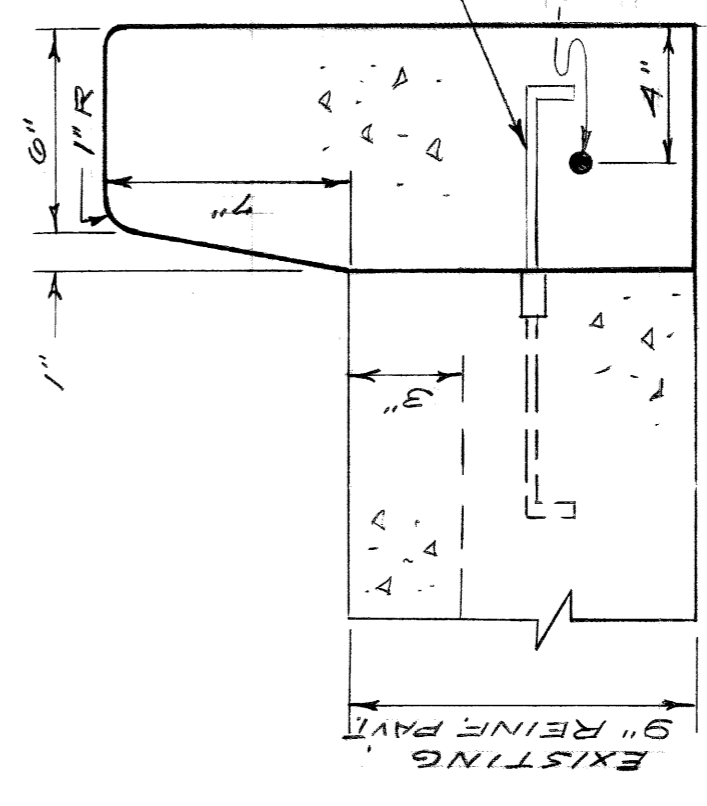
NO.	DESCRIPTION OF ITEM	QUANTITY
1	STREET PAVEMENT REMOVAL - UNREINFORCED	2016 SYDS
2	ALLEY PAVEMENT REMOVAL	919 SYDS
3	GRADING ABANDONED STREETS	4658 SYDS
4	GRADING ABANDONED ALLEYS	9119 SYDS
5	BERM GRADING	117 SYDS
6	SIDEWALK REMOVAL	10,158 SFT
7	DRIVEWAY REMOVAL	180 SFT
8	FILL (GRADE A)	17 CYDS
9	MANHOLE - (SEWER), ABANDONMENT	2 EA
10	MANHOLE - ADJUSTMENT	2 EA
11	CATCH BASIN - ABANDONMENT	8 EA
12	SIDEWALKS - 4" STD.	576 SFT
13	SEPARATE CURB - REINFORCED - TYPE II	281 FT
14	SEPARATE CURB - NON-REINFORCED - TYPE II MODIFIED	561 FT
15	SINGLE BEAM BARREL BARRICADE	62 LFT
16	CATCH BASIN - ADJUSTMENT	2 EA
17	STREETCAR RAIL REMOVAL	1077 LFT
18	STREETCAR TRACK BASE REMOVAL	621 SYDS

- LEGEND**
- STREET PAVEMENT REMOVAL
  - ALLEY PAVEMENT REMOVAL
  - SIDEWALK REMOVAL
  - CONSTRUCT STD. 4" CONCRETE WALK
  - ABANDON EXISTING CATCH BASIN
  - ADJUST EXISTING MANHOLE
  - ABANDON EXISTING MANHOLE
  - CONSTRUCT SEPARATE TYPE CURB - NON-REINFORCED SEE STD. DRWG. MC-C-381
  - CONSTRUCT SEPARATE TYPE CURB - REINFORCED
  - CONSTRUCT SINGLE BEAM BARREL BARRICADE
  - D.S.R. TRACK

**NOTES:**  
 SAWING AT ALLEY RETURNS WHERE INDICATED ON PLANS SHALL BE INCIDENTAL TO THE CONTRACT AND SHALL NOT BE PAID FOR. SEPARATE CURB - NON-REINFORCED - TYPE II.

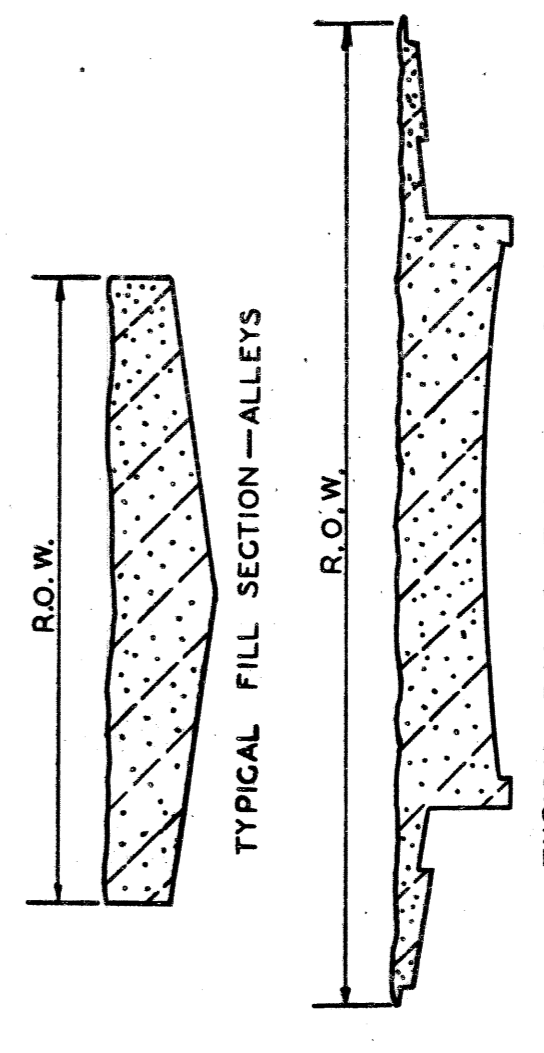


LAFAYETTE 120' WD.  
 CONC. PAVEMENT



DETAIL - SEPARATE CURB - REINFORCED

APPROXIMATELY 3300 CYDS OF FILL (SELECTED EXCAVATED MATERIAL) ARE REQUIRED FOR THIS SHEET.



TYPICAL SECTION - CURB & WALK CONSTRUCTION

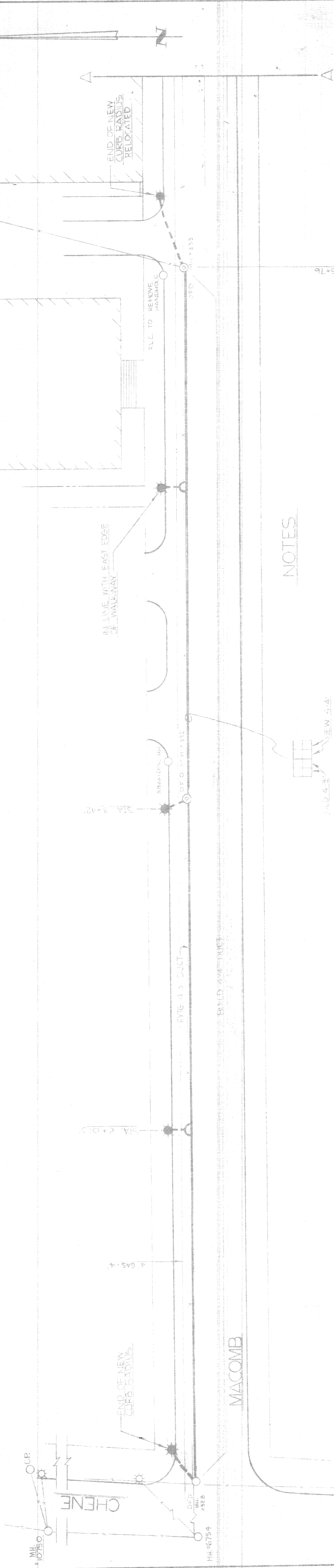
SCALE: 1" = 40'

CITY OF DETROIT DEPARTMENT OF PUBLIC WORKS CITY ENGINEERS OFFICE FOR COMMUNITY DEVELOPMENT COMMISSION		PAVING OF MACOMB - CHENE TO JOSEPH CAMPAU PAVEMENT REMOVAL - AREA BOUNDED BY CHENE, JOSEPH CAMPAU, LAFAYETTE, MACOMB ELMWOOD PARK REHABILITATION PROJECT NO. 3, MICH. R-123		SHEET 4 OF 11 SHEETS CONTRACT NO. PW 6518 ASSIGNMENT NO. 2098 DATE 3-27-73
DESIGNED BY C. SHARP	DRAWN BY C. SHARP	TRACED BY C. S. (M. Newman)	CHECKED BY C. S. (M. Newman)	APPROVED  ENGINEER OF STREETS
REVISIONS LOCATED BY COORDINATES ON SHEET	DESCRIPTION DATE DRAWN BY CHECKED BY	1 2 3 4 5 6 7 8 9 10 11	1 2 3 4 5 6 7 8 9 10 11	PAVEMENT REMOVAL PLAN



PUELFIELD SCHOOL

MH 6782



IN LINE WITH EAST EDGE OF WALKWAY

END OF NEW CURB RADIIUS RELOCATED

PLC TO REMOVE HANDHOLE

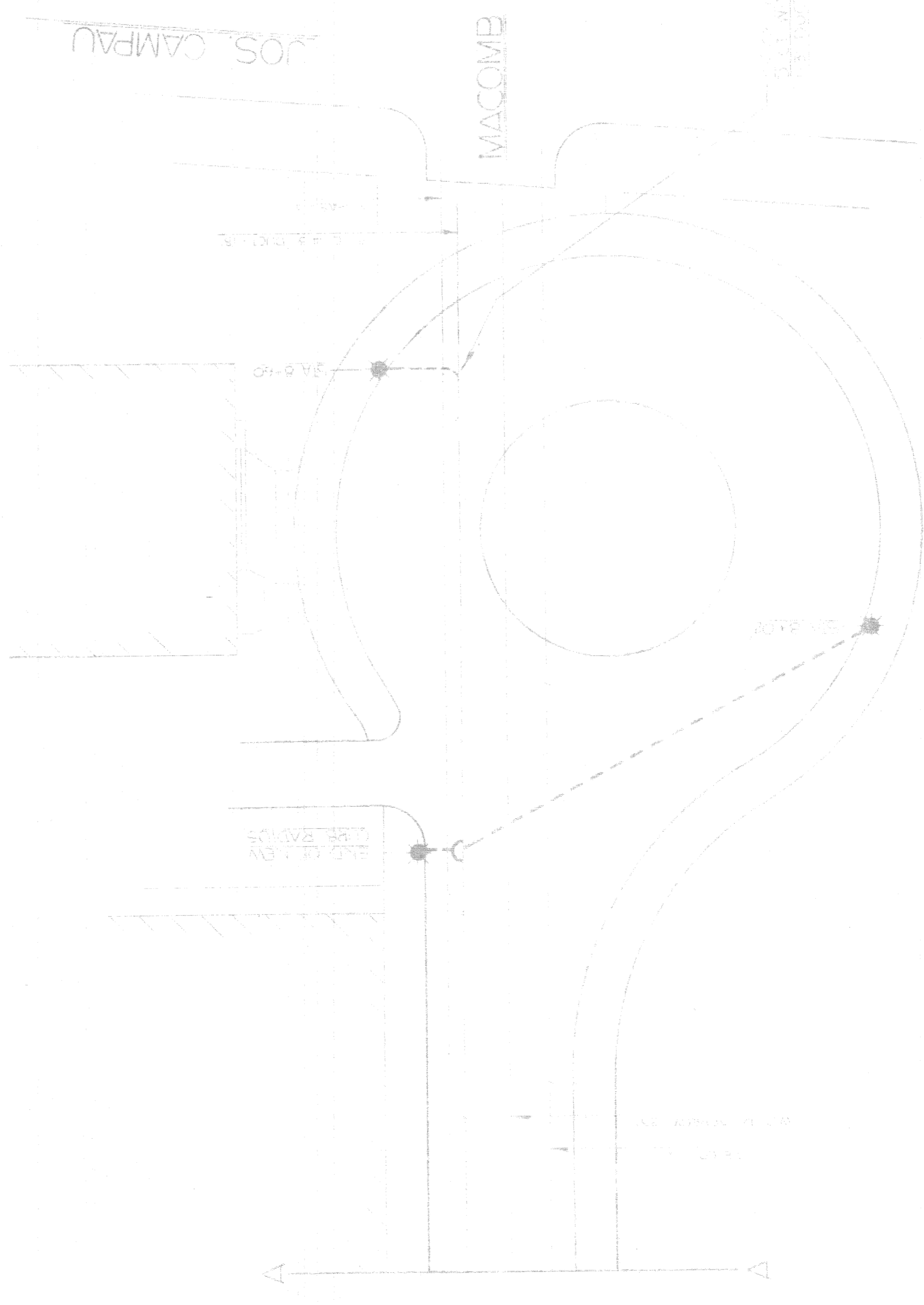
NOTES

IF DFD MANHOLE RING OR COVER IS CRACKED REPLACE WITH PLC HANDHOLE RING OR COVER

L.E.

LEGEND

- QUANTITY OF MANHOLE RINGS TO BE REPLACED WITH PLC HANDHOLE RING OR COVER
- QUANTITY OF MANHOLE RINGS TO BE REPLACED WITH DFD RING OR COVER
- QUANTITY OF MANHOLE RINGS TO BE REPLACED WITH NEW RING OR COVER
- QUANTITY OF MANHOLE RINGS TO BE REPLACED WITH NEW RING OR COVER
- QUANTITY OF MANHOLE RINGS TO BE REPLACED WITH NEW RING OR COVER



NO. 42-0275

BILL OF MATERIALS

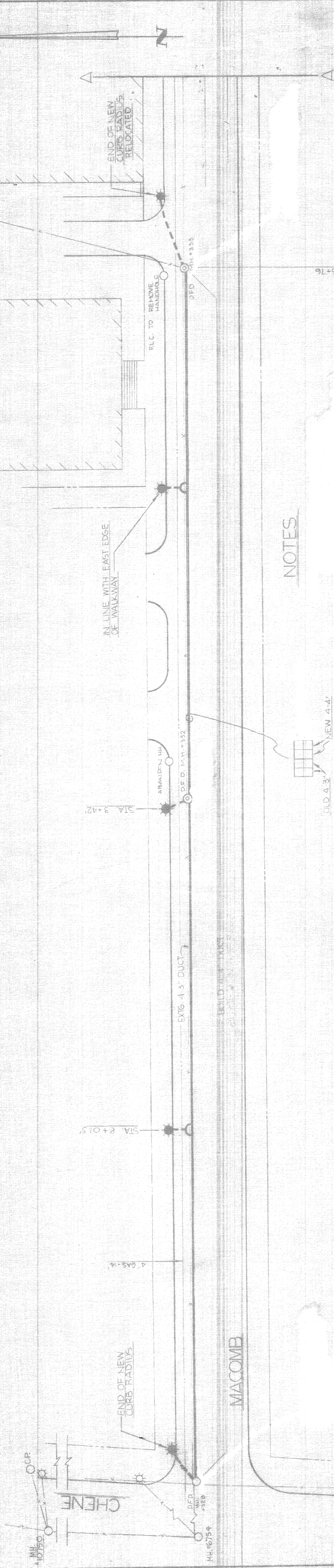
ITEM	QUANTITY	UNIT
PLC HANDHOLE RING OR COVER	1	EACH
DFD RING OR COVER	1	EACH
NEW RING OR COVER	1	EACH

DATE	DESCRIPTION



DUFFIELD SCHOOL

M.I. 42782



NOTES

IF DEF. MANHOLE RING OR COVER IS CRACKED REPLACE WITH P.C. MANHOLE RING OR COVER



LEGEND

- BUILD FOUNDATION FOR STREET LIGHTING STANDARD PER DRAWING NO. 42-0274
- BUILD 6" CONC. ENCASED CONDUIT PER DRAWING NO. 42-0274
- BUILD 3" CONC. ENCASED CONDUIT PER DRAWING NO. 42-0274
- ⊙ ADJUST MANHOLE OR MANHOLE TO NEW GRADE
- ⊖ ADJUST EXISTING MANHOLE OR MANHOLE
- BUILD STREET TYPE "D" MANHOLE PER DRAWING NO. 42-0274
- BUILD STREET FRAME AND COVER NO. 42-0275

BILL OF MATERIALS

DESCRIPTION	QUANTITY	UNIT
1.5" CONCRETE ENCASED CONDUIT	528	LINEAR FEET
3" CONCRETE ENCASED CONDUIT	201	LINEAR FEET
STREET LIGHTS (PC) FOUNDATION	6	EACH
ADJUST MANHOLE	7	EACH
ADJUST MANHOLE	3	EACH
STREET TYPE MANHOLE	3	EACH

SCALE 1" = 20'

DRAWN BY: **MESSANA**  
 CHECKED BY: **[Signature]**  
 APPROVED BY: **[Signature]**

**PAVING OF MACOMB — CHENE TO JOSEPH CAMPAU**  
**PAVEMENT REMOVAL — AREA BOUNDED BY CHENE, JOSEPH CAMPAU, LAFAYETTE, MACOMB**  
**ELMWOOD PARK REHABILITATION PROJECT NO. 3, MICH. R-123**  
**PW-6518**

**MACOMB STREET WIDENING EAST OF CHENE**  
**PLC ELECTRICAL UNDERGROUND FACILITIES**

DATE	DESCRIPTION	CHKD. BY

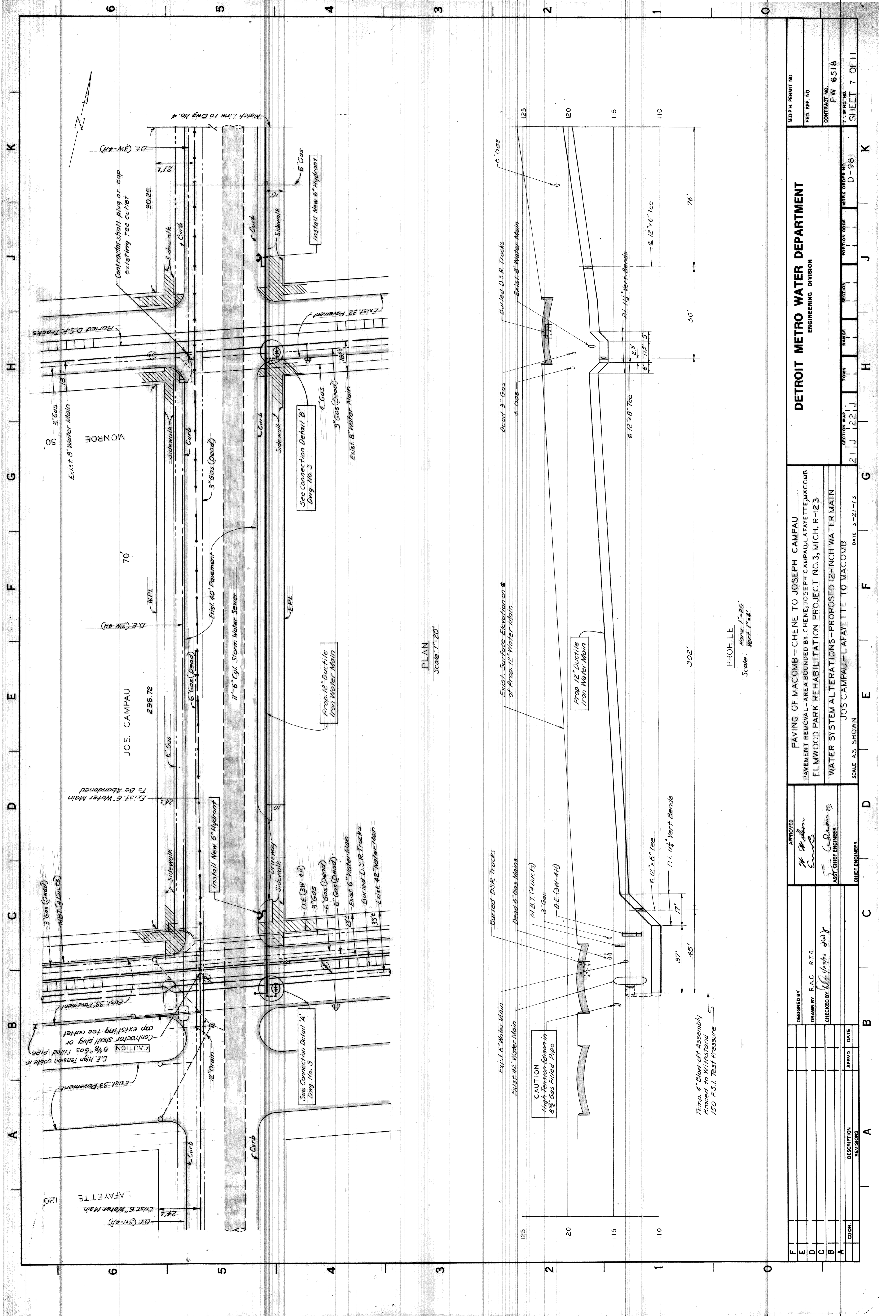
UNDERGROUND

DE CO.	X
M.B.T.	X
GAS	X
WATER	X
PLC	X







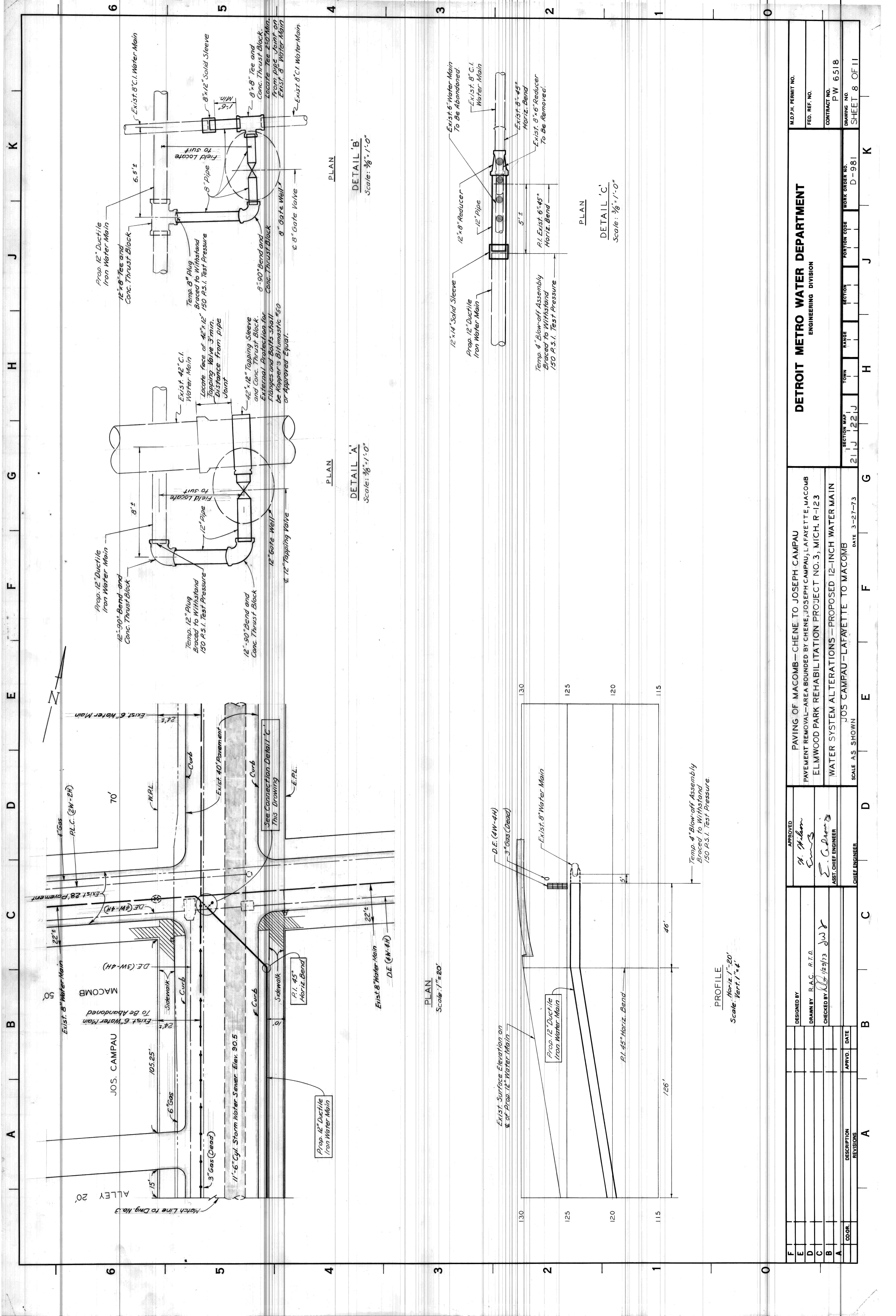


PLAN  
Scale: 1"=20'

PROFILE  
Scale: Horiz. 1"=20'  
Vert. 1"=4'

DESIGNED BY		APPROVED	
DRAWN BY R.A.C. R.T.D.		<i>[Signature]</i>	
CHECKED BY <i>[Signature]</i> 12/29/73		ASST. CHIEF ENGINEER	
DATE		CHIEF ENGINEER	
COOR.	DESCRIPTION REVISIONS	SCALE AS SHOWN	
		DATE 3-27-73	
		SECTION MAP TOWN RANGE SECTION PORTION CODE WORK ORDER NO. D-981	
		SECTION MAP TOWN RANGE SECTION PORTION CODE WORK ORDER NO. D-981	
<p style="text-align: center;"><b>DETROIT METRO WATER DEPARTMENT</b> ENGINEERING DIVISION</p>			
<p style="text-align: center;">PAVING OF MACOMB - CHENE TO JOSEPH CAMPAU PAVEMENT REMOVAL - AREA BOUNDED BY CHENE, JOSEPH CAMPAU, LA FAYETTE, MACOMB ELMWOOD PARK REHABILITATION PROJECT NO. 3, MICH. R-123</p>			
<p style="text-align: center;">WATER SYSTEM ALTERATIONS - PROPOSED 12-INCH WATER MAIN JOS CAMPAU - LA FAYETTE TO MACOMB</p>			
M.D.P.H. PERMIT NO.		CONTRACT NO. P.W. 6518	
FED. REF. NO.		SHEET 7 OF 11	





DETAIL 'A'  
Scale: 3/8" = 1'-0"

DETAIL 'B'  
Scale: 3/8" = 1'-0"

DETAIL 'C'  
Scale: 3/8" = 1'-0"

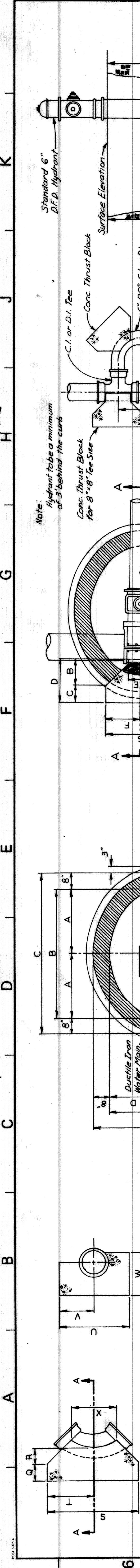
PLAN  
Scale: 1" = 20'

PLAN

PROFILE  
Horiz. 1" = 20'  
Vert. 1" = 4'

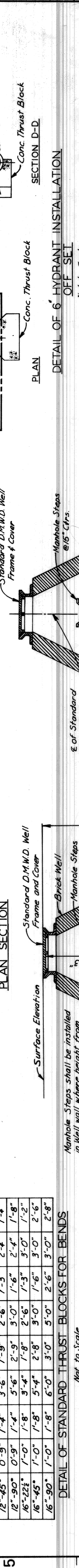
F	COORD.	DESCRIPTION	REVISIONS	APPRVD.	DATE
E					
D	DESIGNED BY				
C	DRAWN BY	R.A.C. R.T.D.			
B	CHECKED BY	[Signature] 12/29/73			
A					
		SCALE AS SHOWN	DATE 3-27-73		
		SECTION MAP	TOWN	RANGE	SECTION
		21 J	122 J		D-981
		WORK ORDER NO.			
		D-981			
		CONTRACT NO.	P.W. 6518		
		FED. REF. NO.			
		M.D.P.H. PERMIT NO.			
<b>DETROIT METRO WATER DEPARTMENT</b>					
ENGINEERING DIVISION					
PAVING OF MACOMB—CHENE TO JOSEPH CAMPAU PAVEMENT REMOVAL—AREA BOUNDED BY CHENE, JOSEPH CAMPAU, LAFAYETTE, MACOMB ELMWOOD PARK REHABILITATION PROJECT NO. 3, MICH. R-123 WATER SYSTEM ALTERATIONS—PROPOSED 12-INCH WATER MAIN JOS CAMPAU—LAFAYETTE TO MACOMB					
		SECTION	RANGE	TOWN	SECTION
		PORTION CODE			
		D-981			
		WORK ORDER NO.			
		D-981			
		CONTRACT NO.	P.W. 6518		
		FED. REF. NO.			
		M.D.P.H. PERMIT NO.			



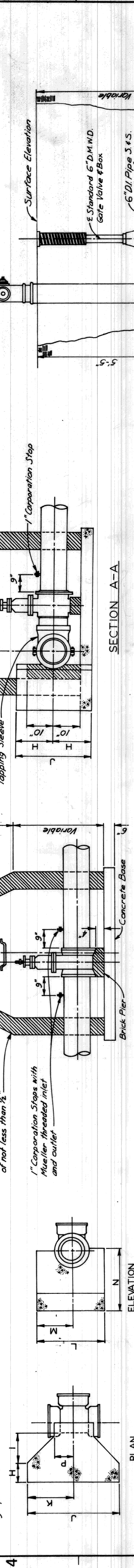


**SCHEDULE OF THRUST BLOCK DIMENSIONS**

BEND SIZE	Q	R	S	T	U	V	W	X
6"-22 1/2"	0'-9"	1'-0"	2'-0"	1'-0"	1'-6"	0'-9"	1'-11"	1'-4"
6"-90"	0'-9"	1'-0"	2'-0"	1'-6"	2'-0"	1'-0"	1'-11"	1'-2"
8"-22 1/2"	0'-9"	1'-0"	2'-4"	1'-2"	2'-0"	1'-0"	1'-11"	1'-4"
8"-90"	0'-9"	1'-0"	3'-4"	1'-8"	2'-6"	1'-3"	1'-11"	1'-2"
12"-22 1/2"	0'-9"	1'-0"	3'-6"	1'-3"	2'-0"	1'-0"	2'-0"	1'-4"
12"-45"	0'-9"	1'-4"	3'-6"	1'-9"	2'-6"	1'-3"	2'-4"	1'-4"
12"-90"	0'-9"	1'-4"	5'-6"	2'-9"	3'-0"	1'-6"	2'-4"	1'-8"
16"-22 1/2"	1'-0"	1'-8"	3'-4"	1'-8"	2'-6"	1'-3"	3'-0"	1'-2"
16"-45"	1'-0"	1'-8"	5'-4"	1'-8"	3'-0"	1'-6"	3'-0"	2'-6"
16"-90"	1'-0"	1'-8"	6'-0"	3'-0"	5'-0"	2'-6"	3'-0"	2'-8"

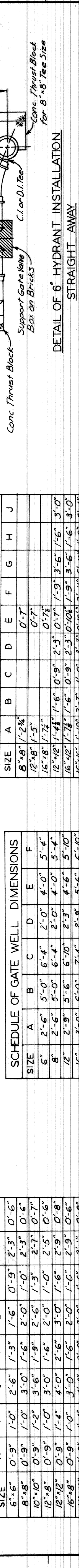


**NOTES:**  
The bearing face of all Thrust Blocks shall be poured against undisturbed earth. Thrust Blocks when required for vertical bends are shown by special details.



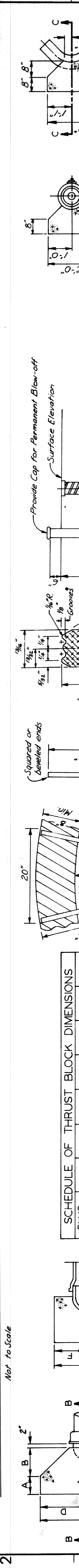
**SCHEDULE OF THRUST BLOCK DIMENSIONS**

TEE SIZE	H	I	J	K	L	M	N	P
6"-6"	0'-9"	1'-0"	2'-6"	1'-3"	1'-6"	0'-9"	2'-3"	0'-6"
8"-8"	0'-9"	1'-2"	3'-0"	1'-6"	2'-0"	1'-0"	2'-3"	0'-6"
10"-10"	0'-9"	1'-2"	3'-6"	1'-9"	2'-6"	1'-3"	2'-7"	0'-7"
12"-12"	0'-9"	1'-4"	4'-0"	1'-6"	2'-0"	1'-0"	2'-5"	0'-6"
16"-16"	0'-9"	1'-4"	4'-0"	1'-6"	2'-0"	1'-0"	2'-9"	0'-8"
16"-12"	0'-9"	1'-0"	3'-0"	1'-6"	2'-0"	1'-0"	2'-9"	0'-6"
16"-16"	1'-0"	1'-4"	4'-0"	2'-0"	3'-0"	1'-6"	3'-1"	0'-8"



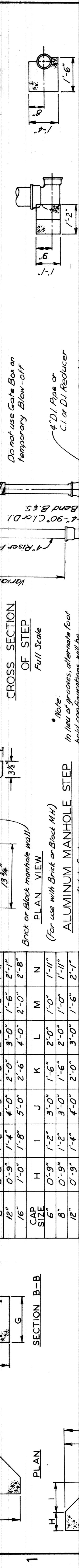
**SCHEDULE OF STANDARD THRUST BLOCK DIMENSIONS FOR TAPPING VALVE**

SIZE	A	B	C	D	E	F	G	H	J
8"-8"	1'-2 1/2"	1'-5"	0'-7"	0'-7"	0'-7"	0'-7"	0'-7"	0'-7"	0'-7"
12"-8"	1'-2 1/2"	1'-5"	0'-7"	0'-7"	0'-7"	0'-7"	0'-7"	0'-7"	0'-7"
16"-12"	1'-4 1/2"	1'-6"	0'-9"	0'-9"	0'-9"	0'-9"	0'-9"	0'-9"	0'-9"
16"-16"	1'-10"	2'-7"	1'-0"	1'-0"	1'-0"	1'-0"	1'-0"	1'-0"	1'-0"



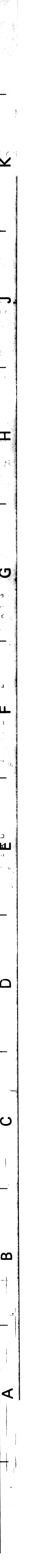
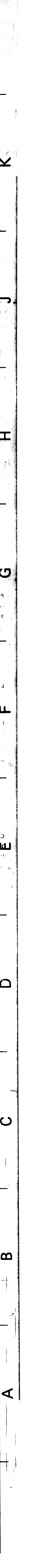
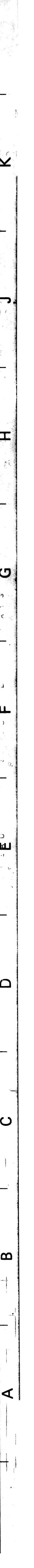
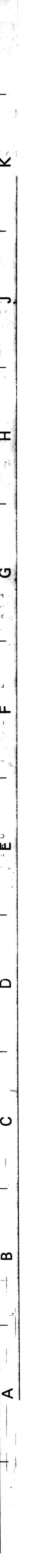
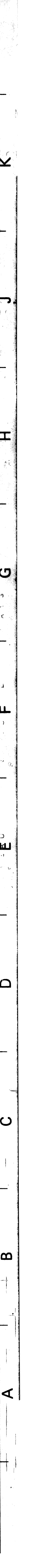
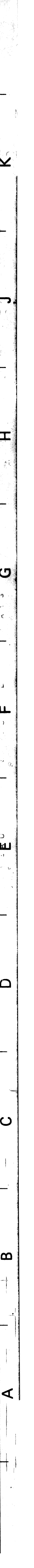
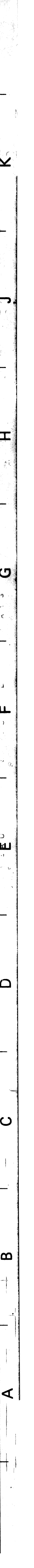
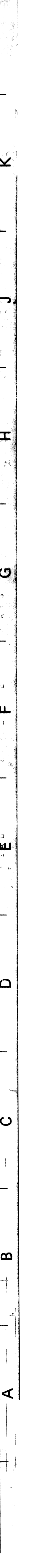
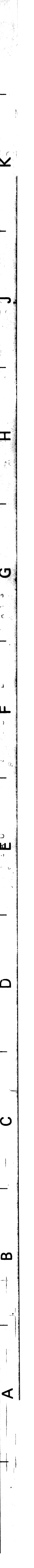
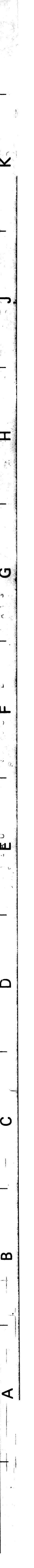
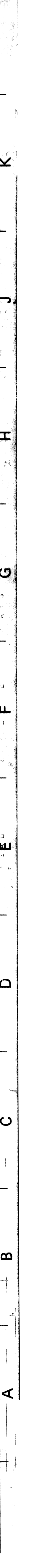
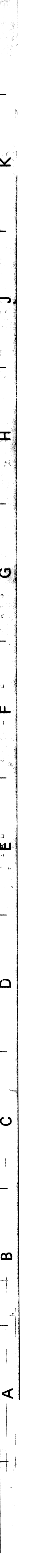
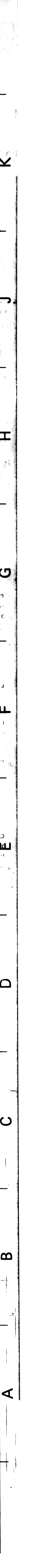
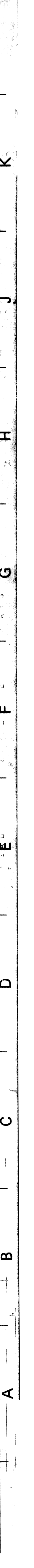
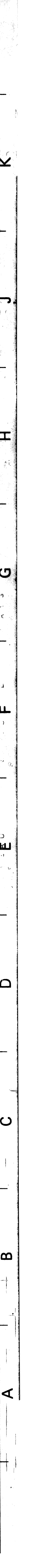
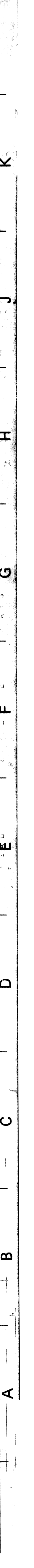
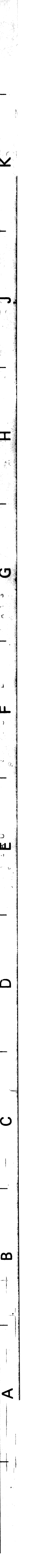
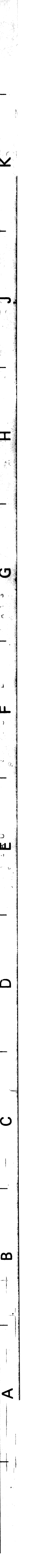
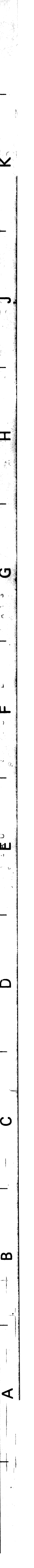
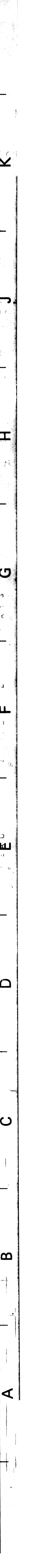
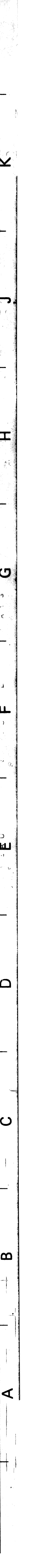
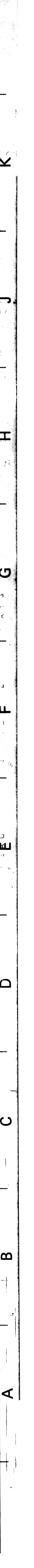
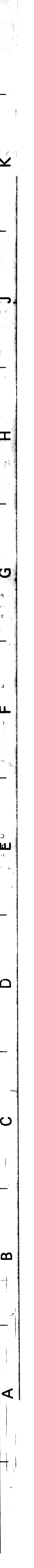
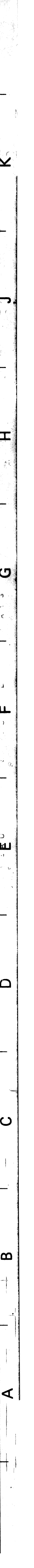
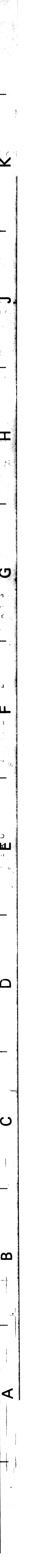
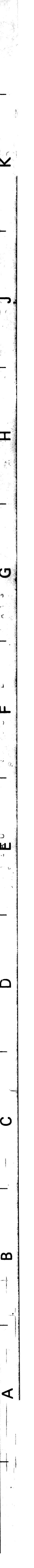
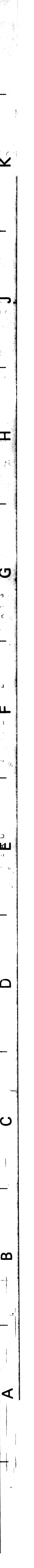
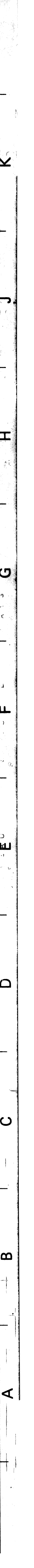
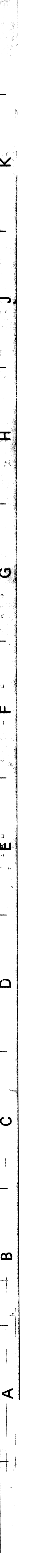
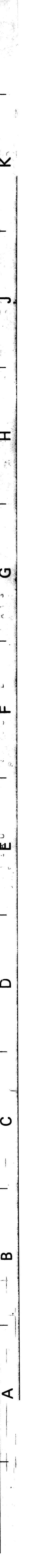
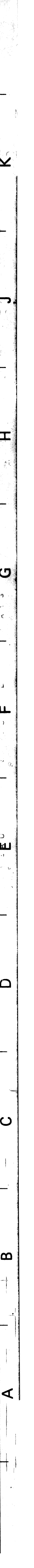
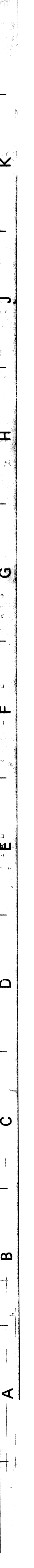
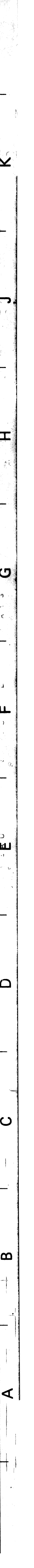
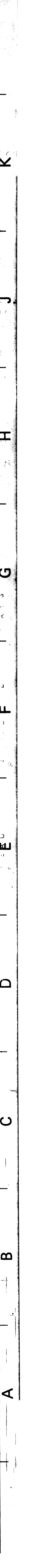
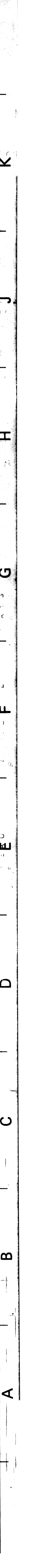
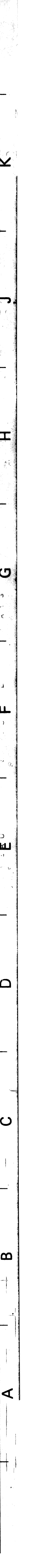
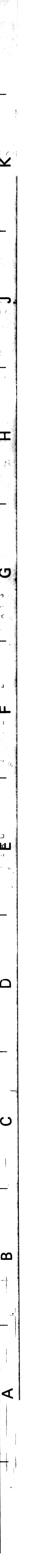
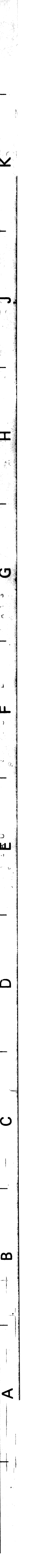
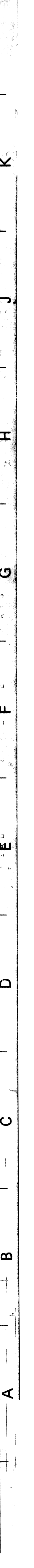
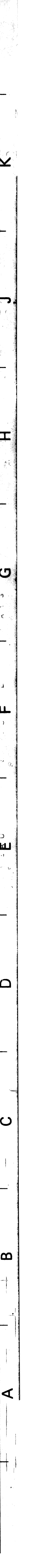
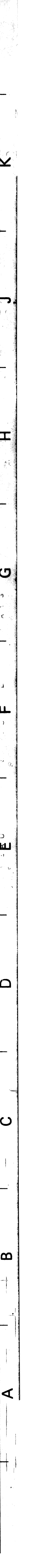
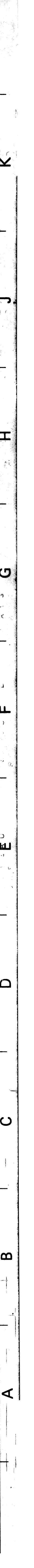
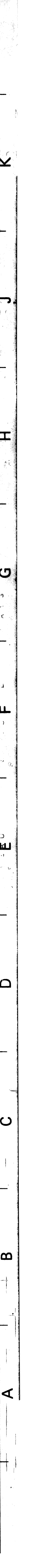
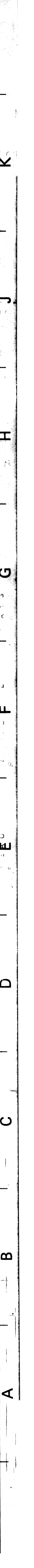
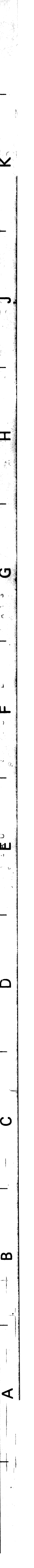
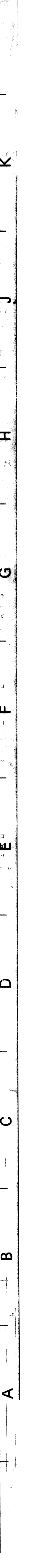
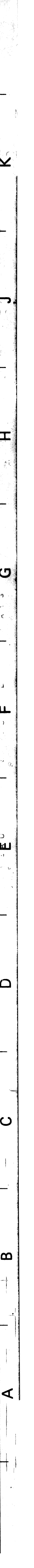
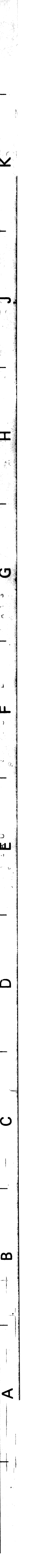
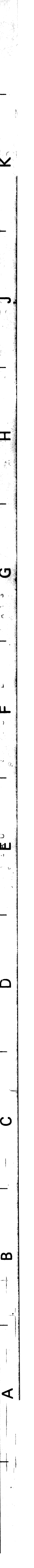
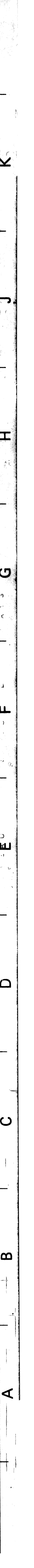
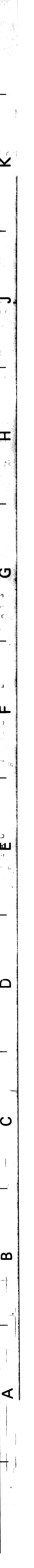
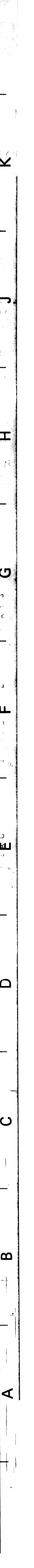
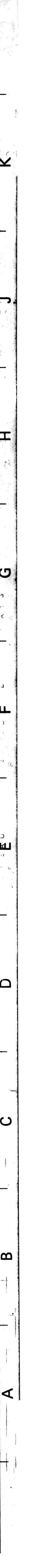
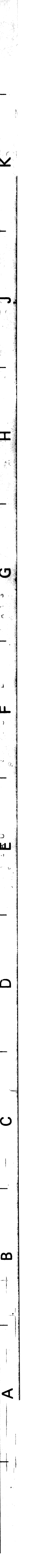
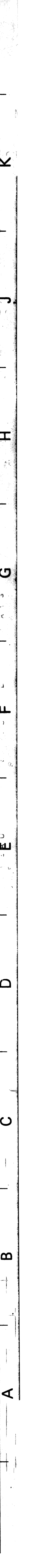
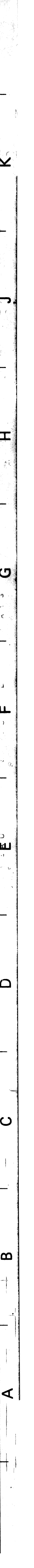
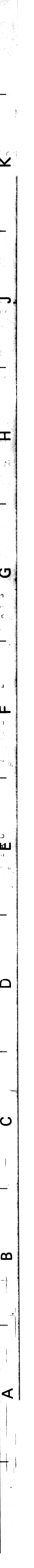
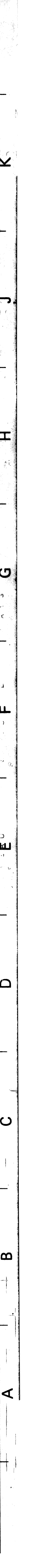
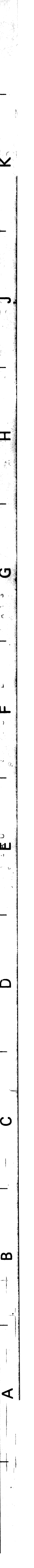
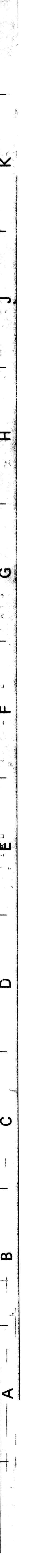
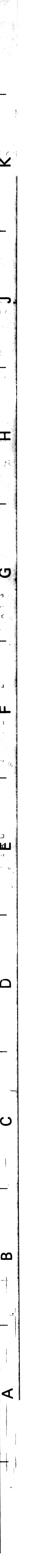
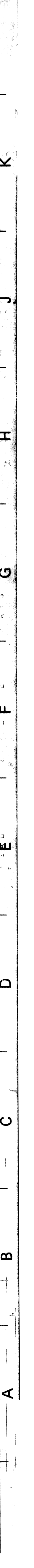
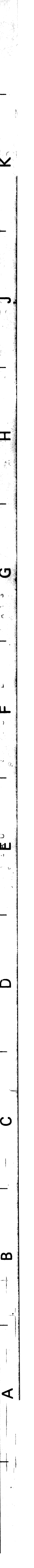
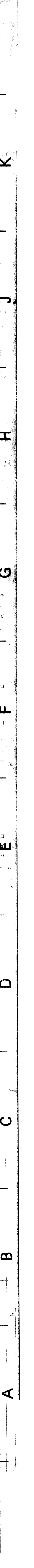
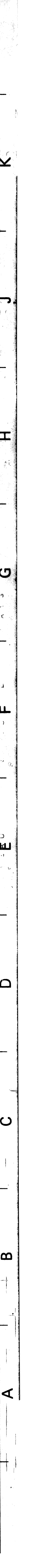
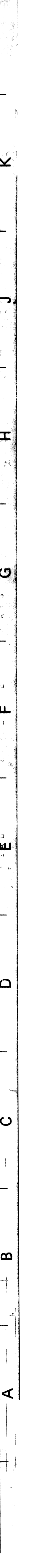
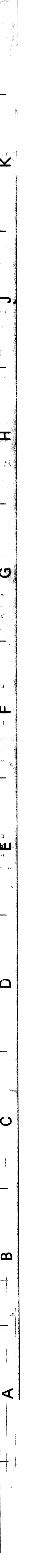
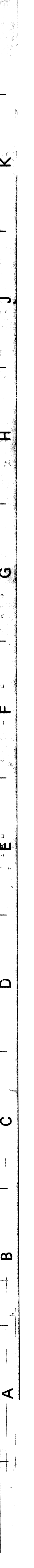
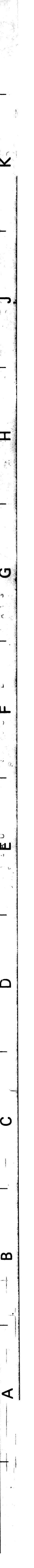
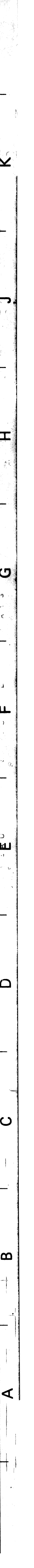
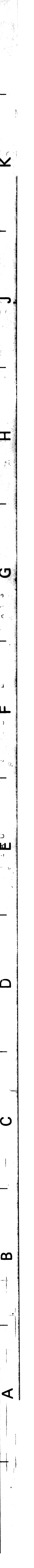
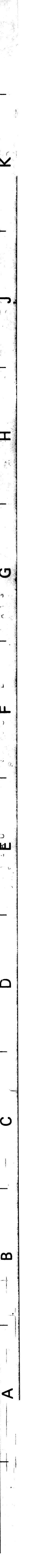
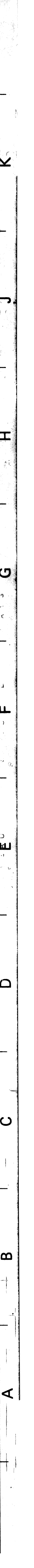
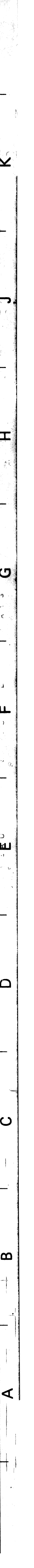
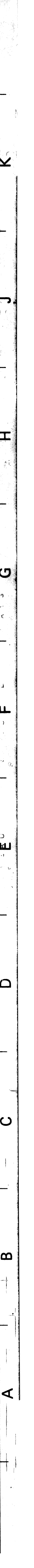
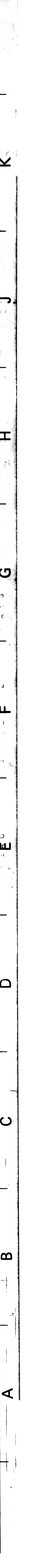
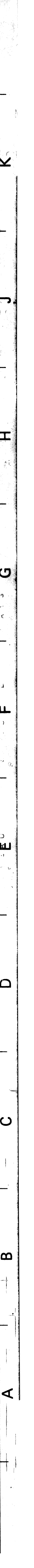
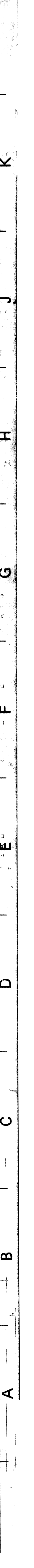
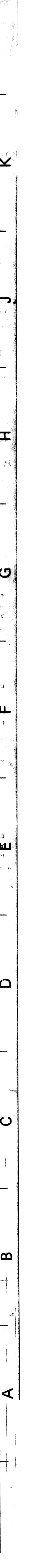
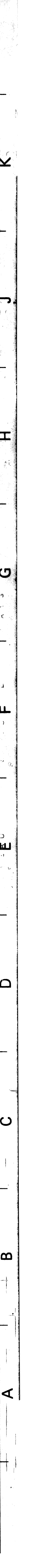
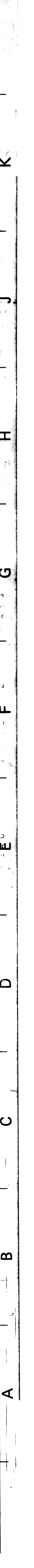
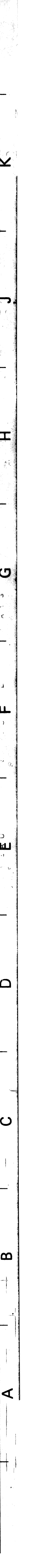
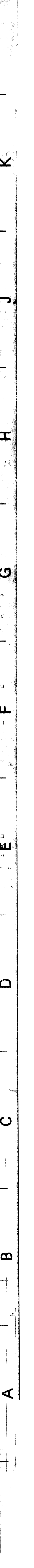
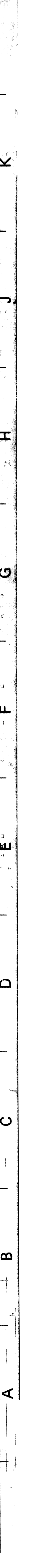
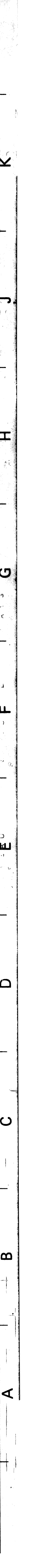
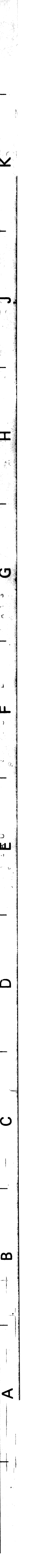
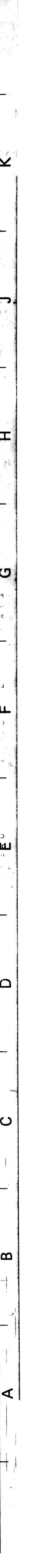
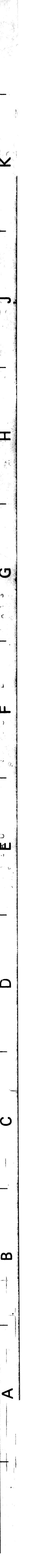
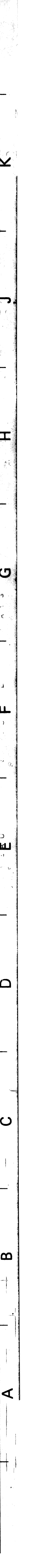
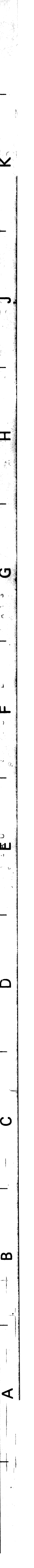
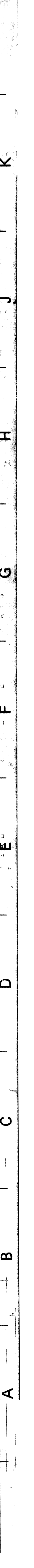
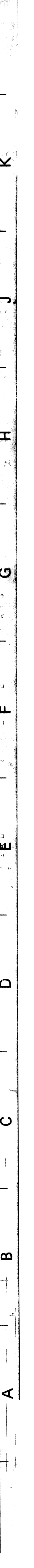
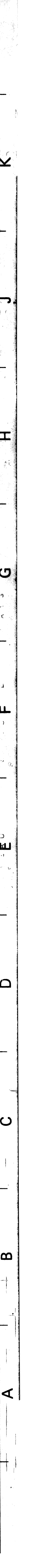
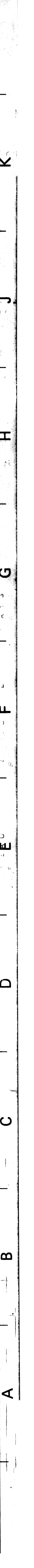
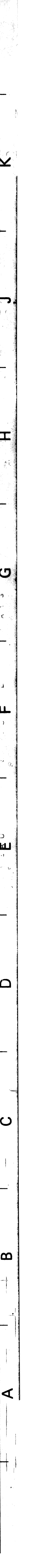
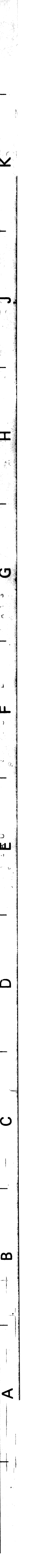
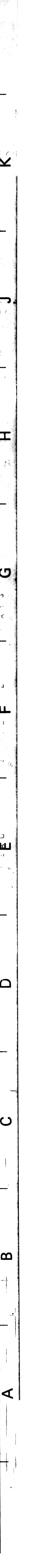
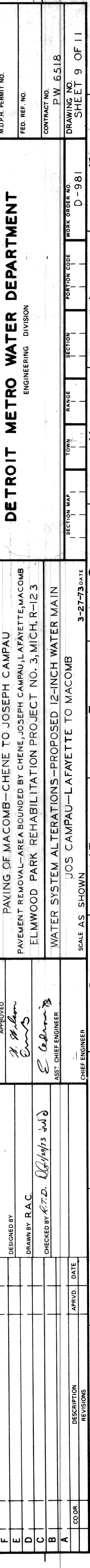
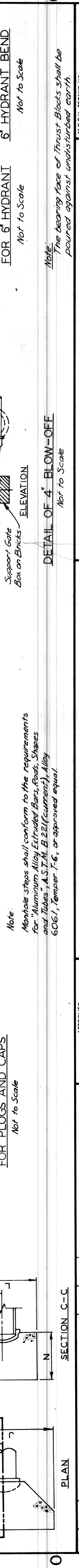
**SCHEDULE OF GATE WELL DIMENSIONS**

SIZE	A	B	C	D	E	F
6"	2'-6"	5'-0"	6'-4"	2'-0"	4'-0"	5'-4"
8"	2'-6"	5'-0"	6'-4"	2'-0"	4'-0"	5'-4"
12"	2'-9"	5'-6"	6'-10"	2'-3"	4'-6"	5'-10"
16"	3'-0"	6'-0"	7'-4"	2'-9"	5'-6"	6'-10"



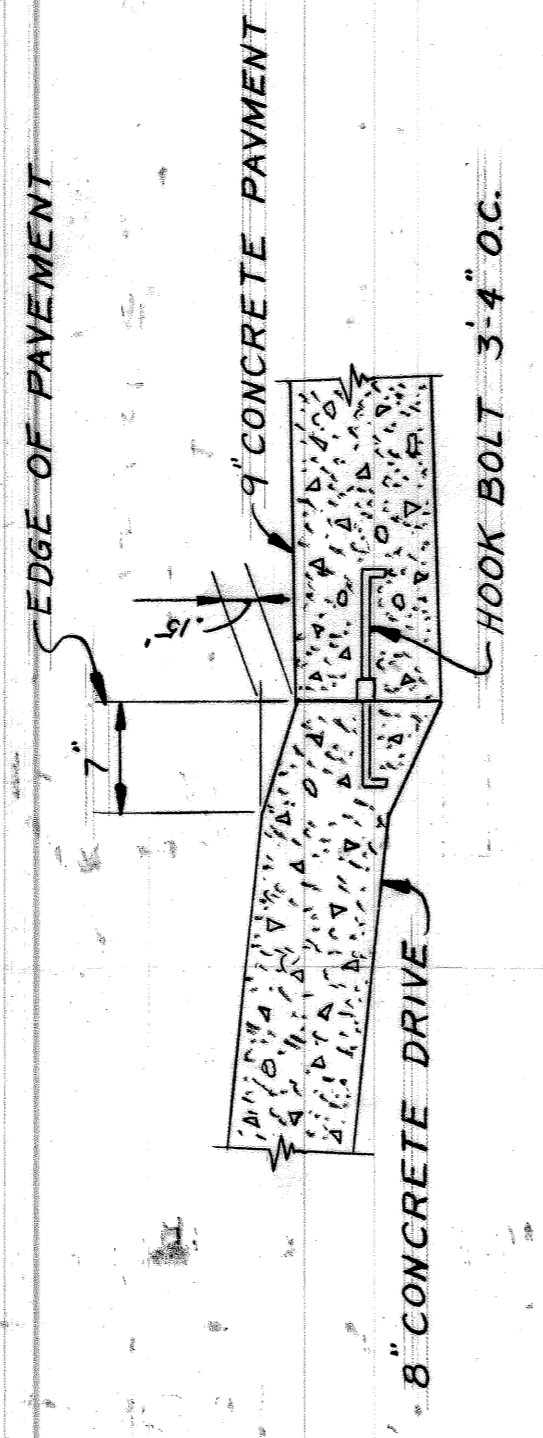
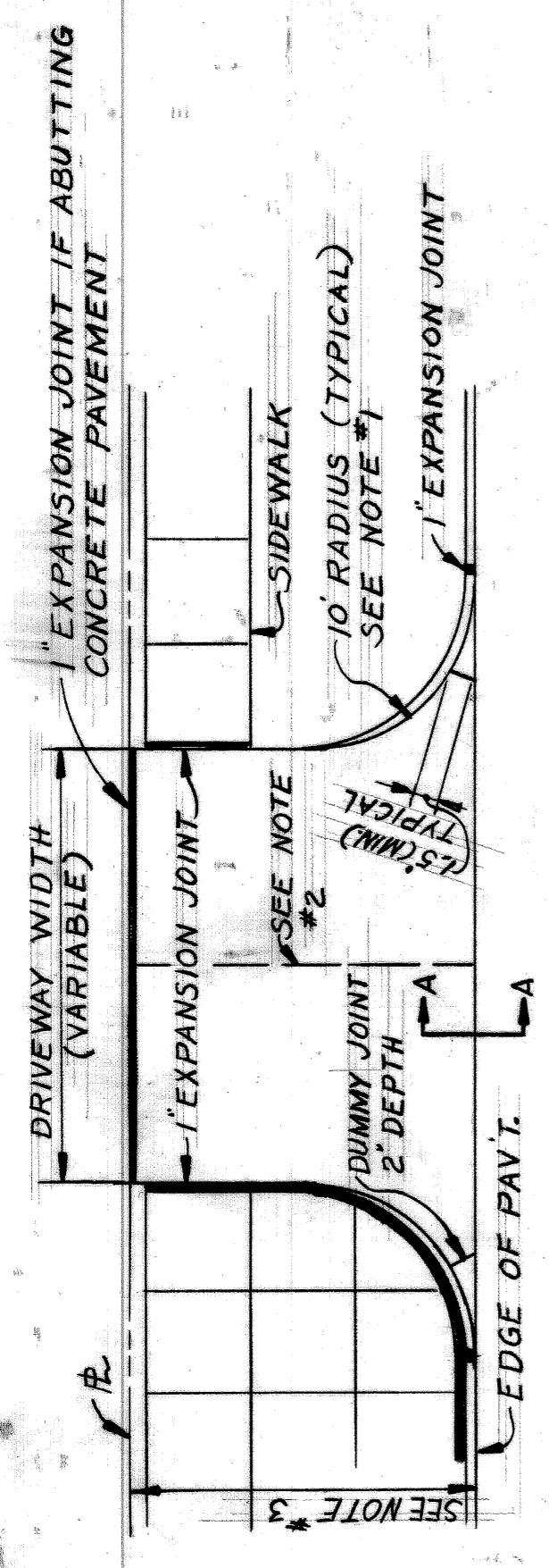
**SCHEDULE OF STANDARD THRUST BLOCKS FOR PLUGS AND CAPS**  
Not to Scale

PLUG SIZE	A	B	C	D	E	F	G
6"	0'-9"	1'-2"	3'-0"	1'-6"	2'-0"	1'-0"	1'-11"
8"	0'-9"	1'-2"	3'-0"	1'-6"	2'-0"	1'-0"	1'-11"
12"	0'-9"	1'-4"	4'-0"	2'-0"	3'-0"	1'-6"	2'-11"
16"	1'-0"	1'-8"	5'-0"	2'-6"	4'-0"	2'-0"	2'-8"





ITEM NO.	DESCRIPTION OF ITEM	UNIT	SHEET 2 OF 11	SHEET 3 OF 11	SHEET 4 OF 11	TOTAL
1	EXCAVATION	CYDS	1170			1170
2	BERM GRADING	SYDS		51	117	168
3	STREET PAVEMENT REMOVAL UNREINF.	SYDS	2790		2616	5406
4	STREET CAR RAIL REMOVAL	LFT			1677	1677
5	STREET CAR TRACK BASE REMOVAL	SYDS			621	621
6	ALLEY PAVEMENT REMOVAL	SYDS			4119	4119
7	GRADING ABANDONED STREETS	SYDS			4658	4658
8	GRADING ABANDONED ALLEYS	SYDS			4119	4119
9	STEP REMOVAL	LUMP SUM				
10	NON-REINFORCED CONCRETE REMOVAL	CYDS	11			11
11	TREE REMOVAL 13"-18" DIA.	EACH	3			3
12	SIDEWALK REMOVAL	SFT	9155		10,158	19313
13	DRIVEWAY REMOVAL	SFT	1181		180	1361
14	FILL-(GRADE A)	CYDS		1801	17	1818
15	STOP BOX ADJUSTMENT	EACH		1		1
16	MANHOLE-(SEWER) ABANDONMENT	EACH			2	2
17	MANHOLE ADJUSTMENT	EACH		6	2	8
18	MANHOLE-RECONSTRUCT CONE	EACH		11		11
19	CATCH BASIN-ABANDONMENT	EACH		2	8	10
20	CATCH BASIN ADJUSTMENT	EACH		1	2	3
21	CATCH BASIN "A"-NEW	EACH		4		4
22	CATCH BASIN "B" WITH TRAP-NEW	EACH		4		4
23	SEWERS-12" PIPE C-76-III	LFT		460		460
24	UNDERDRAINS-6"	LFT		92		92
25	PAVEMENT 9" UNIFORM-REINFORCED	SYDS		3758		3758
26	SEPARATE CURB-REINFORCED TYPE II	LFT			28	28
27	SEPARATE CURB-NON REINF TYPE II MOD.	LFT			56	56
28	SIDEWALKS 4" STANDARD	SFT		11,641	576	12,217
29	SIDEWALKS 6" STANDARD	SFT		390		390
30	DRIVEWAYS 8" STANDARD	SFT		937		937
31	TOP SOIL	CYDS		24		24
32	SODDING	SYDS		308		308
33	TEST CORES	EACH		4		4
34	SINGLE BEAM BARREL BARRICADE	LFT			62	62
35	MAINTAINING TRAFFIC	LUMP SUM				
				LUMP SUM		LUMP SUM



COMMERCIAL DRIVEWAY DETAILS

NOTES:

1. TRANSITION EDGE OF DRIVEWAY FROM CURB AT THE STREET TO NO CURB AT THE END OF DRIVEWAY RADIUS.
2. WHERE DRIVEWAY EXCEEDS 15' IN WIDTH A DUMMY JOINT SHALL BE PLACED LONGITUDINALLY ALONG THE CENTER LINE.
3. WHEN DISTANCE EXCEEDS 15', A TRANSVERSE CONTRACTION JOINT WILL BE REQUIRED.

NOTES:

- \* INCLUDES REINFORCED INTEGRAL CURB, SEE STANDARD DRAWING C-4943.
- \*\* CONSTRUCTION ONLY.
- FOR P.L.C. QUANTITIES SEE SH. \*5
- FOR WATER QUANTITIES SEE SH. \*6

DESIGNED BY <b>R Rosik</b>	APPROVED: <i>Joseph Campau</i> ENGINEER OF STREETS	CITY OF DETROIT DEPARTMENT OF PUBLIC WORKS CITY ENGINEERS OFFICE FOR COMMUNITY DEVELOPMENT COMMISSION	PAVING OF MACOMB -CHENE TO JOSEPH CAMPAU PAVEMENT REMOVAL-AREA BOUNDED BY CHENE, JOSEPH CAMPAU, LAFAYETTE, MACOMB ELMWOOD PARK REHABILITATION PROJECT NO. 3, MICH.-R123	SHEET 11 OF 11 SHEETS
DRAWN BY	ENGINEER OF STREETS		CONTRACT NO. PW 6518	CONTRACT
TRACED BY	ENGINEER OF EXPRESSWAYS		ASSIGNMENT NO. 2097 & 2098	ASSIGNMENT
CHECKED BY BRANTLEY W. Kowalski			DATE 3-27-73	DATE

QUANTITIES AND DETAILS