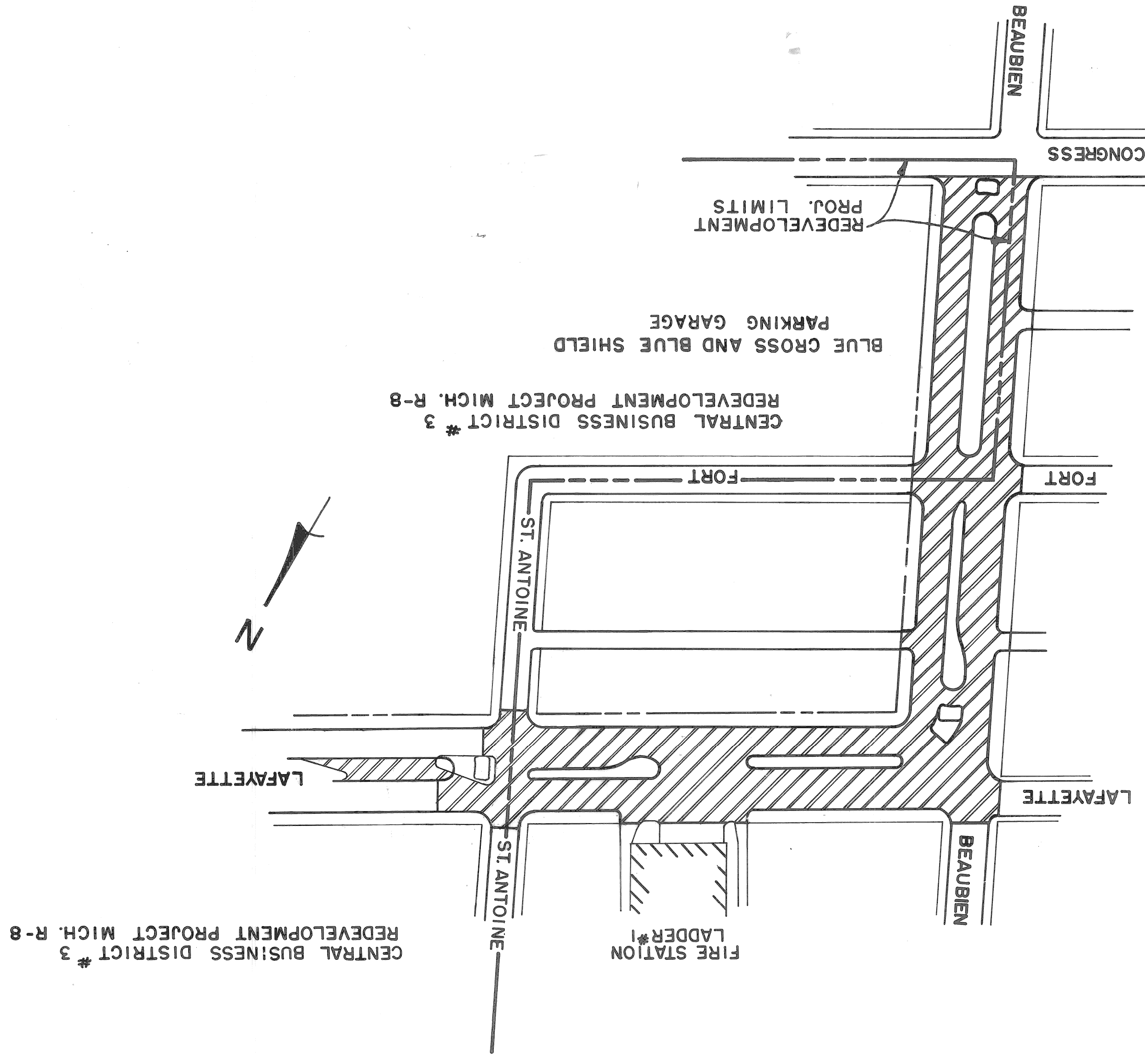


CITY OF DETROIT
 DEPARTMENT OF PUBLIC WORKS
 CITY ENGINEERS OFFICE

PLANS FOR PROPOSED

PAVING OF BEAUBIEN
 FROM CONGRESS TO LAFAYETTE
 AND
 PAVING OF LAFAYETTE
 FROM BEAUBIEN TO ST. ANTOINE



- INDEX OF SHEETS
- 1. TITLE SHEET
 - 2. TYPICAL PAVEMENT SECTIONS
 - 3. ALIGNMENT PLAN
 - 4. CONSTRUCTION SEQUENCE
 - 5. REMOVAL AND UTILITY PLAN
 - 6. BEAUBIEN - PLAN AND PROFILE
 - 7. LAFAYETTE - PLAN AND PROFILE
 - 8-10. INTERSECTION GRADE DETAILS
 - 11. LAWN WATERING SYSTEM
 - 12. QUANTITY SHEET
 - 13. P.L.C. PLAN
 - 13. P.L.C. STANDARDS ATTACHED

PROJECT: PAVING OF BEAUBIEN
 FROM CONGRESS TO LAFAYETTE
 AND
 PAVING OF LAFAYETTE
 FROM BEAUBIEN TO ST. ANTOINE
 CONTRACT NO. PW 6514

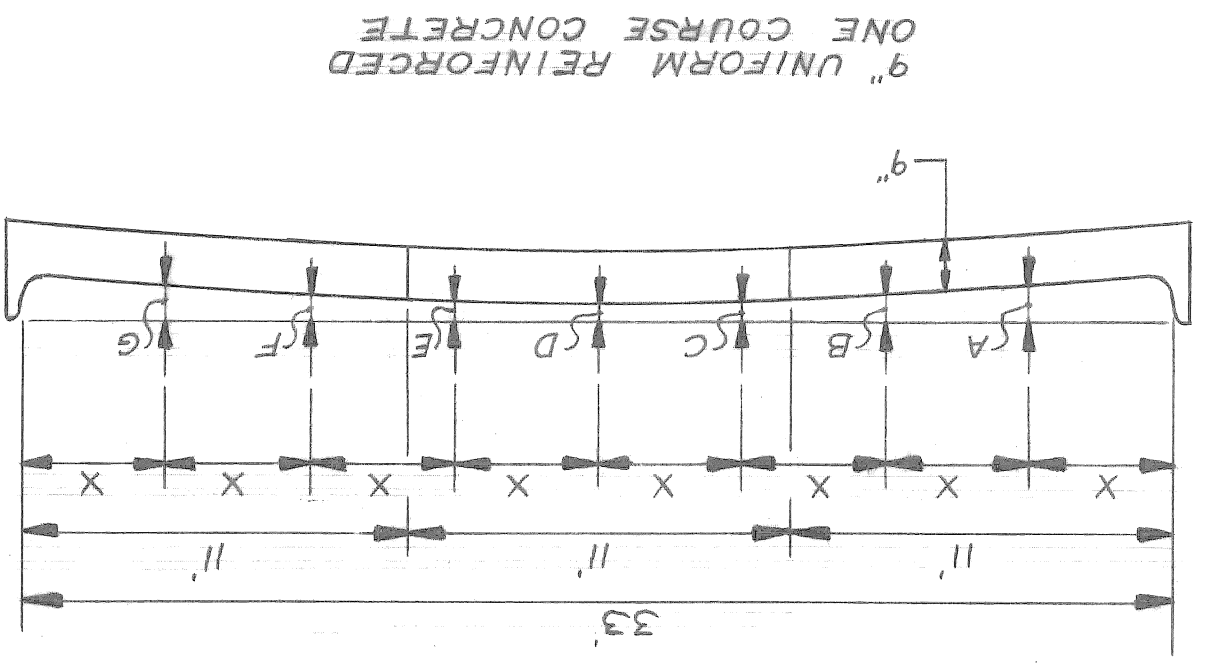
PLANS PREPARED BY
 DEPARTMENT OF PUBLIC WORKS
 CITY ENGINEERS OFFICE

RECOMMENDED FOR APPROVAL	DATE	7-13-72	<i>D.C. M... ..</i>	ENGINEER OF INSPECTION
RECOMMENDED FOR APPROVAL	DATE	7-13-72	<i>W. S.</i>	HIGHWAY ENGINEER
APPROVED	DATE	7-14-72	<i>R. T.</i>	ASSISTANT CITY ENGINEER
APPROVED	DATE	7-14-72	<i>[Signature]</i>	CITY ENGINEER

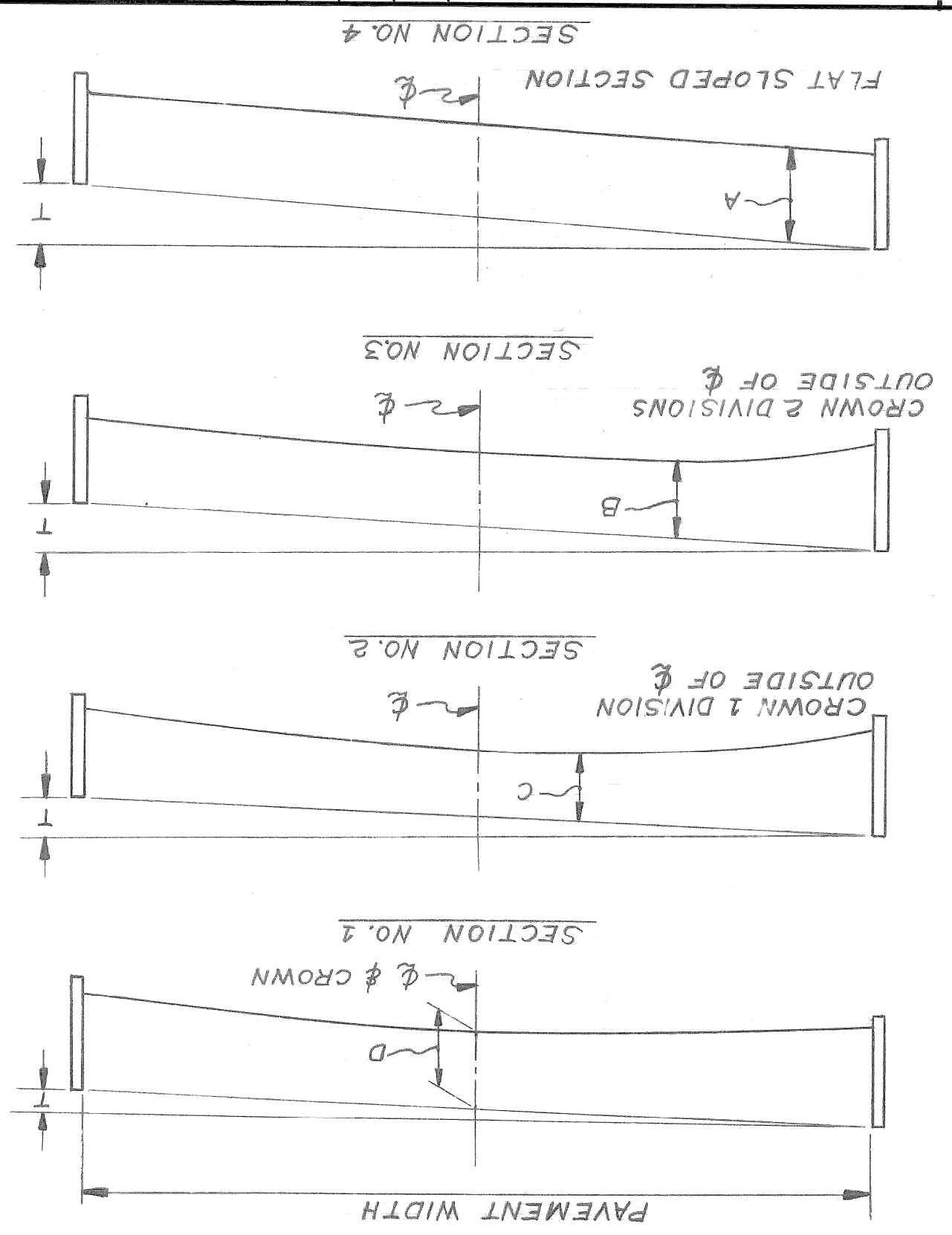
DATE JUNE 30, 1972
 DRWG. NO. 1 OF 13

ELEMENTS OF 33' PAVEMENT

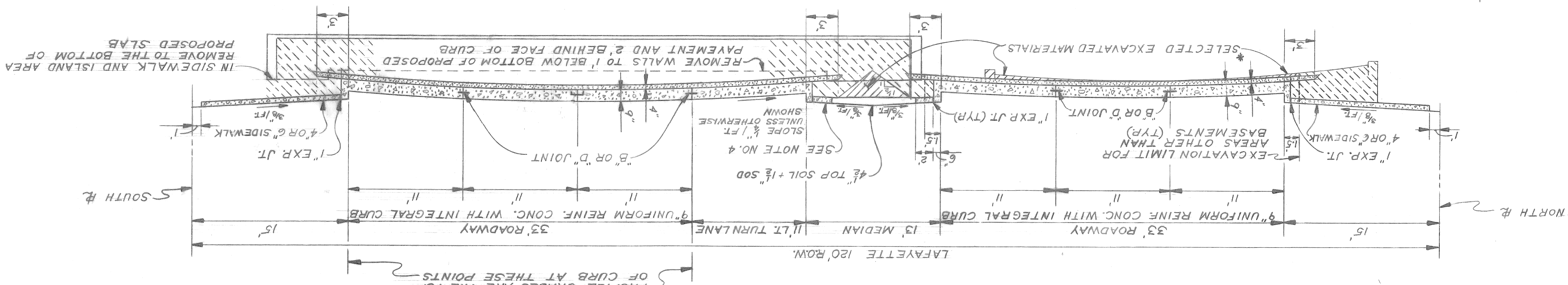
PAY'T. CURB WIDTH	X	T	A	B	C	D	E	F	G	6	5	4	3	2	1	0.0	0.3	0.4	0.5	0.6	0.7	0.8	0.9	1.0	7"	4-1 1/2"	33'
																											SEC.



- NOTES:**
1. CONCRETE PAVEMENT SHALL BE REINFORCED IN ACCORDANCE WITH STD. DET. DWG. C-4942
 2. FOR JOINTING PLAN & DETAILS SEE STD. DET. DWGS. C-4379, C-4943, C-4991, C-4992 & C-4993
 3. REINFORCED INTEGRAL CONCRETE CURB SHALL BE IN ACCORDANCE WITH STD. DET. DWG. C-4943
 4. CONSTRUCT 2' WIDE 4" STD. WALK ON THE PERIMETER OF THE ISLAND. SEE PAVING PLANS FOR LOCATION OF 6" STD. SIDEWALK.

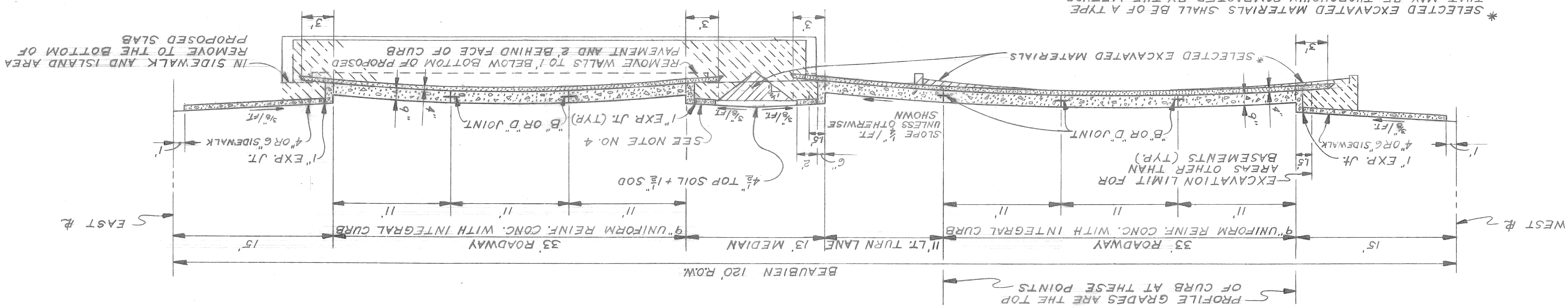


TYPICAL SECTION OF LAFAYETTE
FROM BEAUBIEN TO STANTOINE



- EARTHWORK LEGEND**
- FILL-GRADE A
 - FILL-22 A
 - SELECTED EXCAVATED MATERIALS
- JOINT LEGEND**
- D LONGITUDINAL LANE THE JOINT-ACCORDING TO STD. DET. DWG. C-4943 DETAIL NO.1
 - B LONGITUDINAL BULKHEAD CONSTRUCTION JOINT-ACCORDING TO STD. DET. DWG. C-4943 DETAIL NO.2

TYPICAL SECTION OF BEAUBIEN
FROM CONGRESS TO LAFAYETTE



* SELECTED EXCAVATED MATERIALS SHALL BE OF A TYPE THAT MAY BE THOROUGHLY COMPACTED BY THE METHOD SPECIFIED. SELECTED EXCAVATED MATERIAL SHALL BE RESTRICTED TO SAND OR GRAVEL OR CRUMBLY YELLOW OR BROWN CLAY.

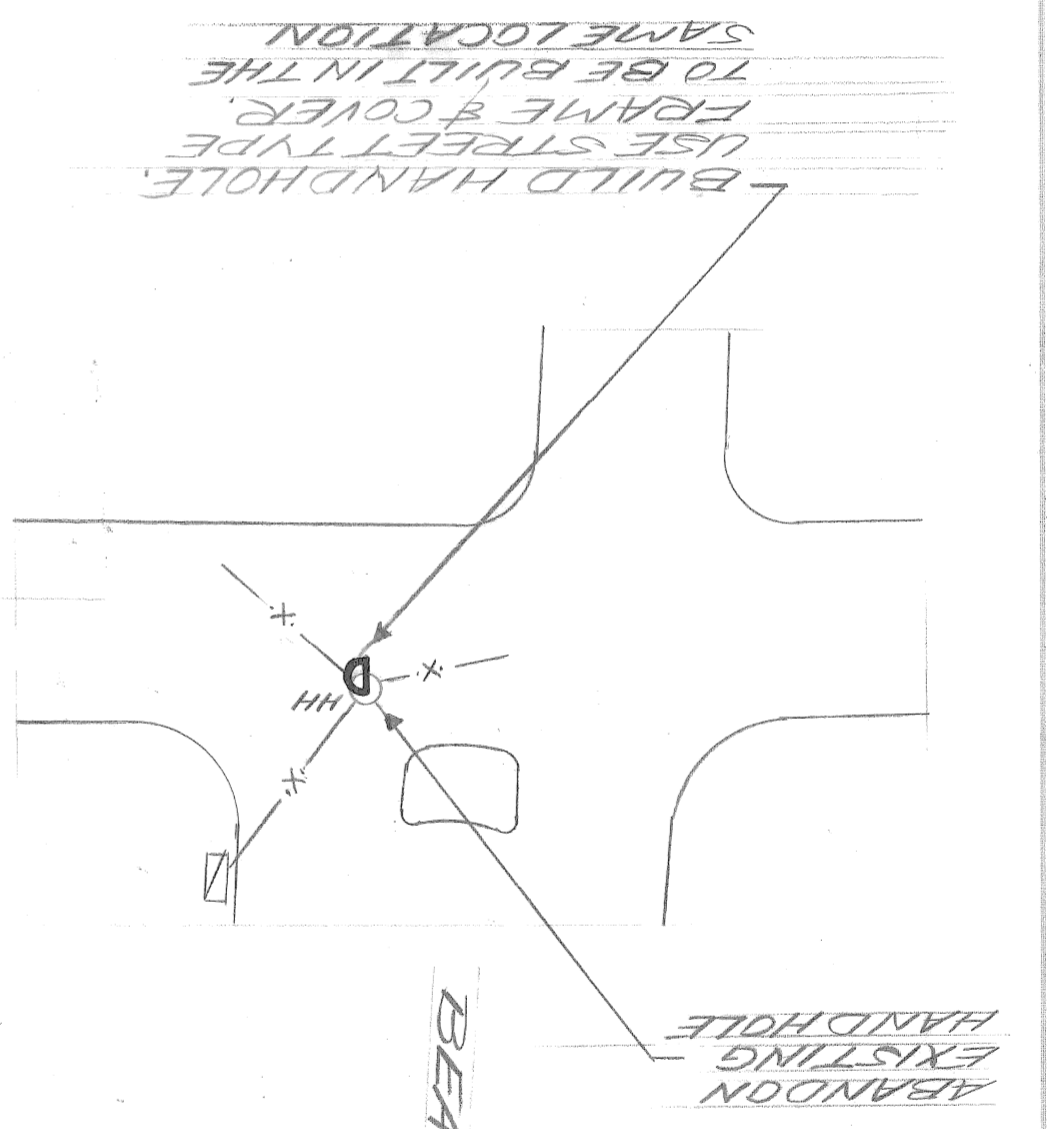
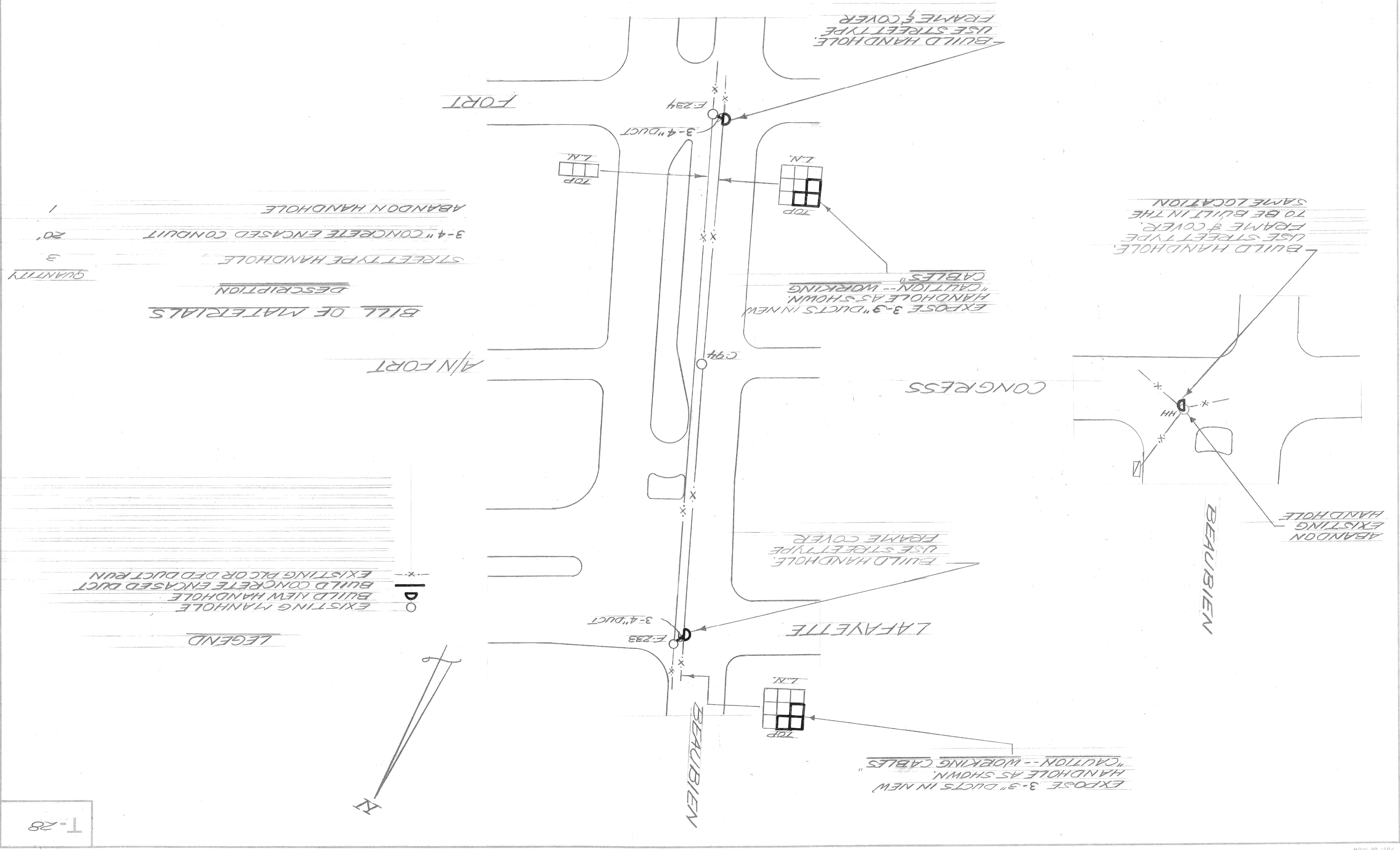
DATE	DESCRIPTION	CHKD. BY

RELIGHTING OF WIDENED BEAUBIEN-CONGRESS TO
LAFAYETTE AND WIDENED LAFAYETTE - BEAUBIEN TO
ST. ANTOINE
CONTRACT WORK

PUBLIC LIGHTING
COMMISSION
CITY OF DETROIT

DRAWN BY
A. DONNAN
CHECKED BY
B.L.K.
APPROVED BY
T.M. CH

FILE NO.
51-0963
SHEET NO.
1-A
DATE
10-4-73



BILL OF MATERIALS

DESCRIPTION	QUANTITY
STREET TYPE HANDHOLE	3
3-4" CONCRETE ENCASED CONDUIT	20'
ABANDON HANDHOLE	1

LEGEND

○	EXISTING MANHOLE
○	BUILD NEW HANDHOLE
○	BUILD CONCRETE ENCASED DUCT
○	EXISTING PLCOR DEF DUCT RUN

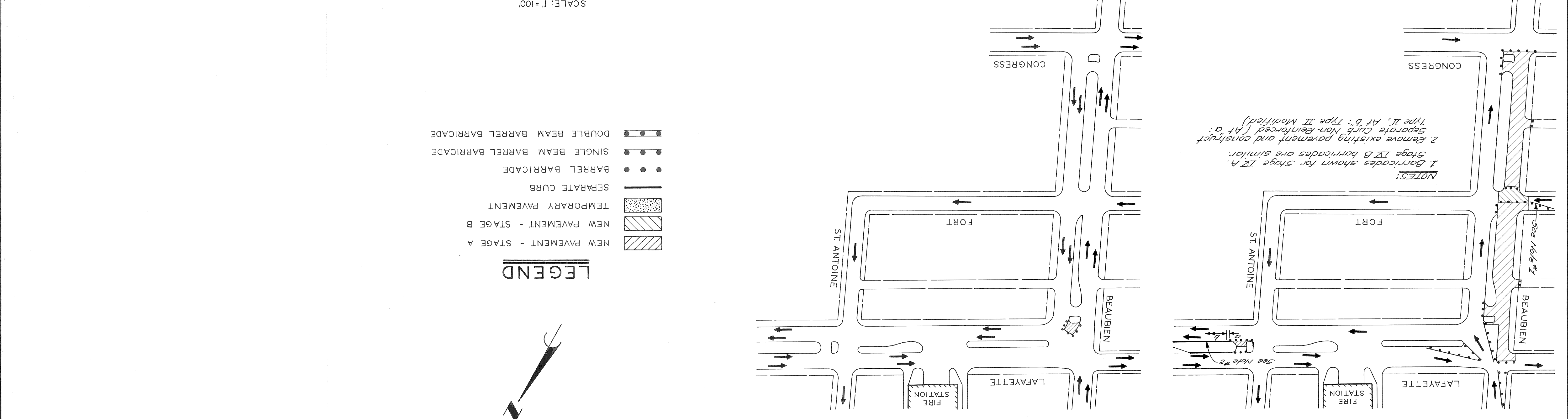
REVISIONS LOCATED BY COORDINATES ON SHEET	DESCRIPTION	DATE	BY
DESIGNED BY	REVISIONS		
DRAWN BY			
CHECKED BY			
APPROVED:			
ENGINEER OF STREETS			
ENGINEER OF EXPRESSWAYS			

DATE JUNE 30, 1972
 DRWG NO.
 CONTRACT NO. PW 6514
 SHEET 4 OF 13 SHEETS

CITY OF DETROIT
 DEPARTMENT OF PUBLIC WORKS
 CITY ENGINEERS OFFICE
 FOR
 CONSTRUCTION SEQUENCE

PAVING OF BEAUBIEN FROM CONGRESS TO LAFAYETTE AND FROM BEAUBIEN TO ST ANTOINE
 PAVING OF BEAUBIEN FROM CONGRESS TO LAFAYETTE AND FROM BEAUBIEN TO ST ANTOINE

SCALE: 1"=100'



LEGEND



PAVING OF BEAUBIEN FROM CONGRESS TO LAFAYETTE AND FROM BEAUBIEN TO ST ANTOINE

CONSTRUCTION SEQUENCE

DATE JUNE 30, 1972

DRWG NO.

CONTRACT NO. PW 6514

SHEET 4 OF 13 SHEETS

CITY OF DETROIT

DEPARTMENT OF PUBLIC WORKS

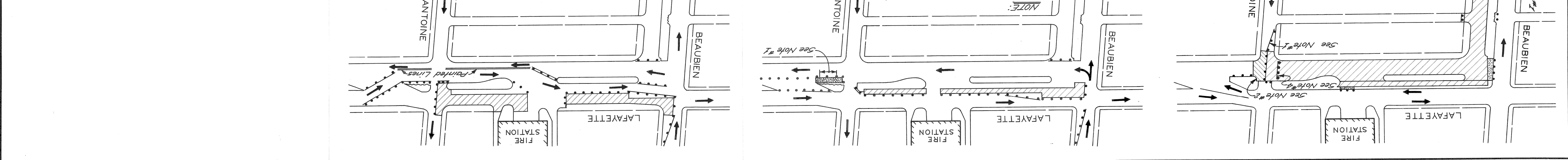
CITY ENGINEERS OFFICE

FOR

CONSTRUCTION SEQUENCE

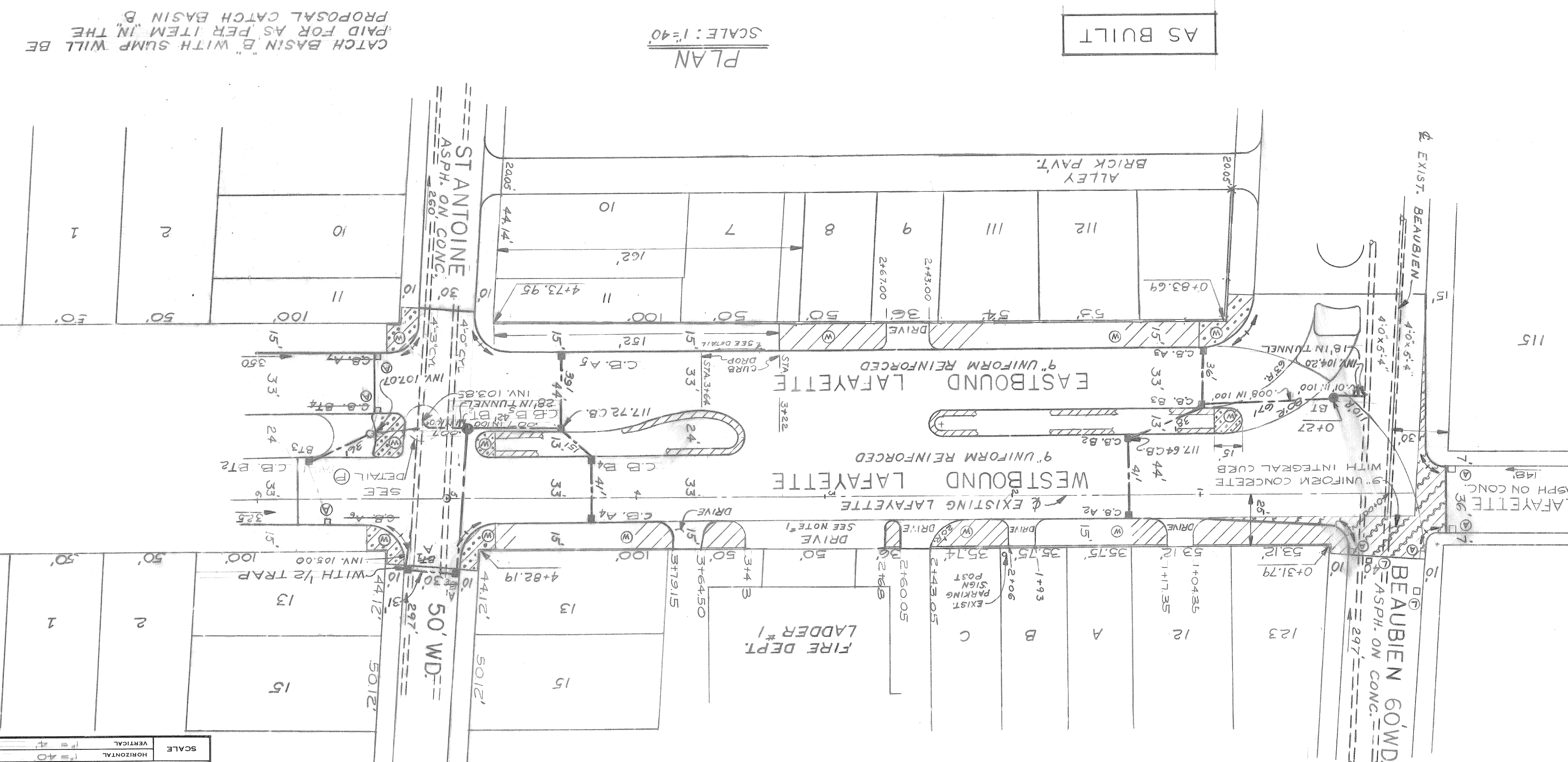
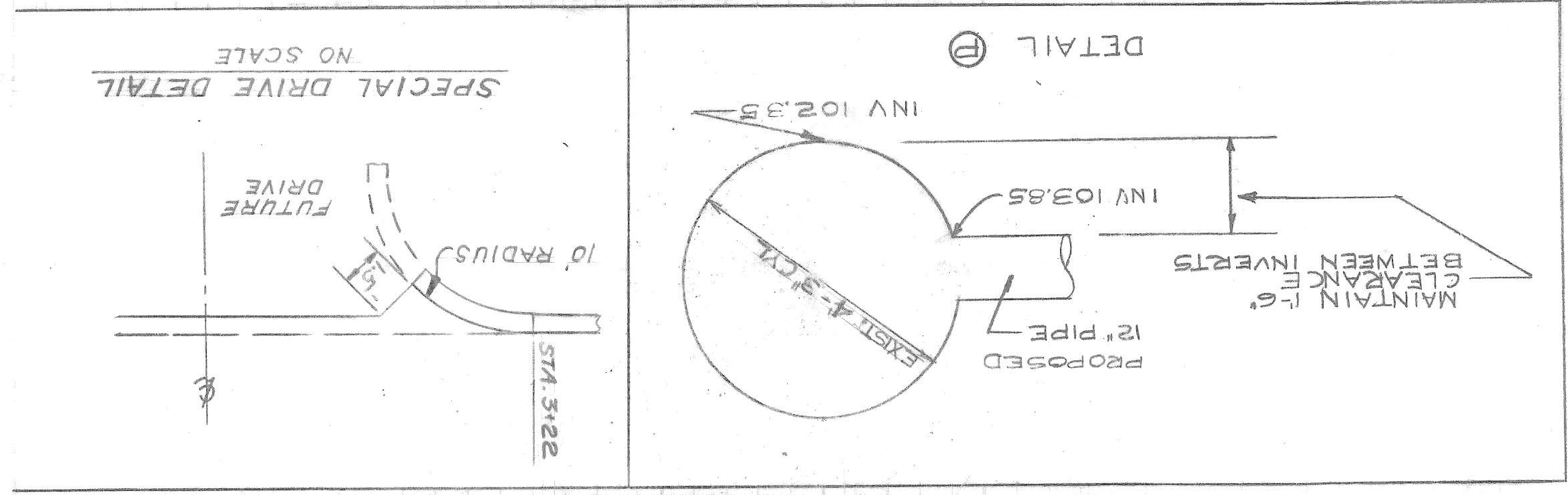
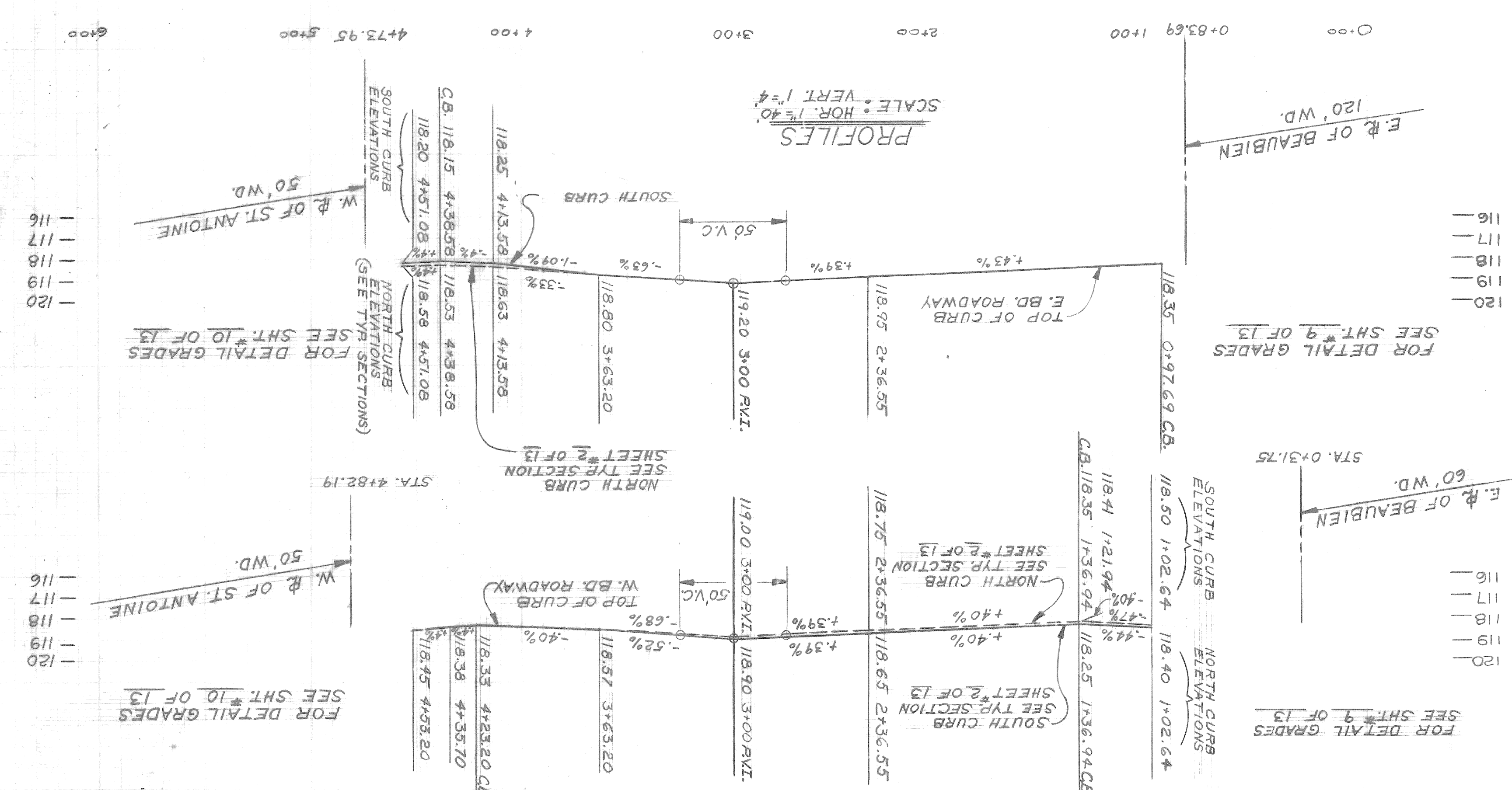
PAVING OF BEAUBIEN FROM CONGRESS TO LAFAYETTE AND FROM BEAUBIEN TO ST ANTOINE

SCALE: 1"=100'



Approved
[Signature]
 7/6/72

REVISIONS DESCRIPTION DELETED FENCE SPECIAL DRIVE DETAIL ADDED DELETED SDWK. & RELOCATED FENCE ON SW CORNER LAFAYETTE & ST. ANTOINE PROP. DRIVE ON SOUTH SIDE RELOCATED 4th BY BASIN ADDED. A BASIN CHANGED B.C.		FINAL DATE 7/6/72	CHECK C. SHARP M.C.C.	REVIEW M.C.C.	N.J.K.
APPROVED BY <i>[Signature]</i>		CHECKED BY M.C.C.	PLAN M.C.C.	GRADE M.C.C.	ESTIMATE M.C.C.
CITY OF DETROIT DEPARTMENT OF PUBLIC WORKS FOR CITY ENGINEERS OFFICE		PLAN AND PROFILE PAVING OF BEAUBIEN FROM BEAUBIEN TO ST. ANTOINE AND FROM CONGRESS TO LAFAYETTE			
SHEET 2 OF 13 SHEETS	CONTRACT NO. PW 6514	ASSIGNMENT NO. A01767B	INCHES 28	DATE JUNE 30, 1972	



CATCH BASIN OUTLET AND SEWER PIPE CLASS	CLASS *	STATIONING	INVERT	MANHOLE
A1	C 76-III	112.15	112.15	B1 WITH COVER
A2	C 76-II	113.65	113.65	A1
A3	C 76-III	112.75	112.75	A2
B1	C 76-III	107.70	106.90	B2
B2	C 76-III	106.90	106.50	B3 (SUMP)
B3 (SUMP)	C 76-III	106.50	104.35	A4
A4	C 76-II	113.75	112.55	B4
B4	C 76-III	109.80	108.50	B5 (SUMP)
B5 (SUMP)	C 76-III	108.50	112.90	A5
A5	C 76-II	112.55	112.55	A6
A6	C 76-III	112.90	112.90	A7
A7	C 76-III	112.75	112.75	B7
B7	C 76-III	104.05	104.05	B7 WITH MANHOLE

NOTES:

1. DRIVES TO BE 8" CONCRETE.
2. STATIONING IS ALONG CENTERLINE OF EXISTING LAFAYETTE.
3. FOR ALIGNMENT SEE SHEET 3 OF 13 AND 0.5% GRADE UNLESS SHOWN OTHERWISE.
4. ALL PROPOSED SEWER LINES ARE 12" DIA.

CONSTRUCTION LEGEND

- 4" SIDEWALK
- 6" SIDEWALK
- 9" UNIFORM CONC. NON-REINFORCED
- 48" CHAIN LINK FENCE
- STOP BOX ADJUSTMENT
- PROPOSED CATCH BASIN
- PROPOSED SEWER LINE
- CBA CATCH BASIN "A"
- CBB CATCH BASIN "B"
- CBB CATCH BASIN "B" WITH MANHOLE COVER
- CBB CATCH BASIN "B" WITH TRAP

MARKS

BENCH
 P.L.M. # 88-354A
 N.E. COR. JEFFERSON AND BRUSH, 120.898
 C.B.M. ARE ON HYD W.S. BEAUBIEN
 100'± SOUTH OF CONGRESS, 112.38
 C.B.M. ARE ON HYD S.W. COR.
 LAFAYETTE AND BEAUBIEN, 121.00
 C.B.M. @ FIRE STATION ON SILL
 @ SERVICE DOOR ENTRANCE, 120.59
 C.B.M. ARE ON HYD N.E. COR.
 LAFAYETTE AND ST. ANTOINE, 121.33

NOTE - FOR SYMBOLS (A) ETC. SEE STANDARD DETAIL DRAWING NO. C-473
 CONTRACTOR MUST CHECK WITH UTILITIES FOR LOCATIONS OF EXISTING STRUCTURES WHETHER OR NOT INDICATED ON PLANS.

BOOK NO. 11-13-69
 LEVEL
 DATE 11-13-69
 PAVING COMPLETED
 NO. 11-13-69
 SCALE
 HORIZONTAL 1"=40'
 VERTICAL 1"=4'