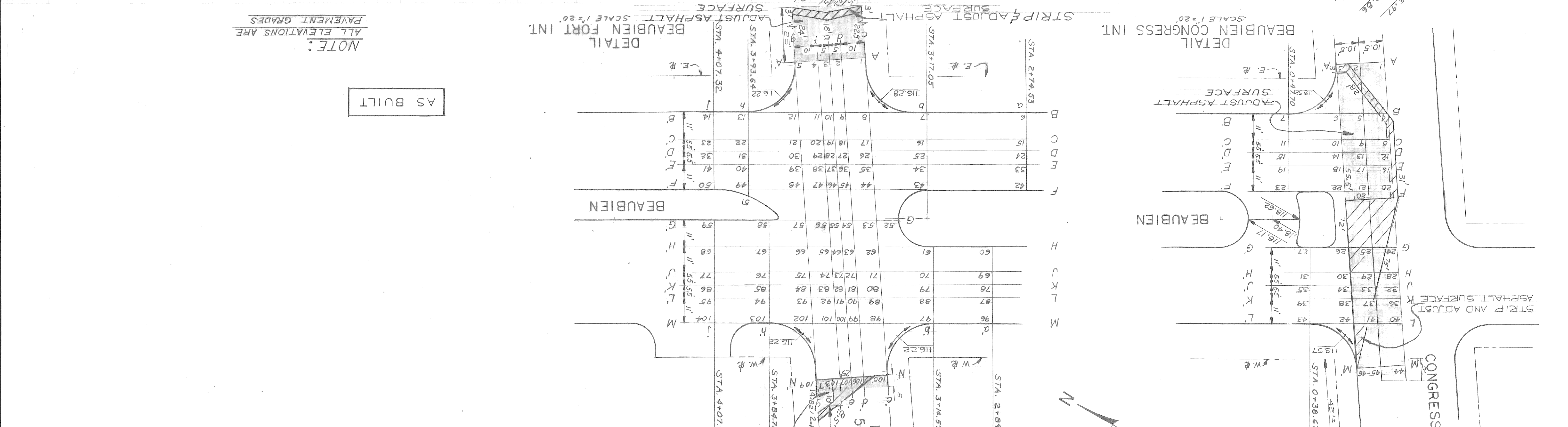


NO.	DATE	LEVEL	CONTRACTOR
PAVING COMPLETED			
BOOK			

NOTE - FOR SYMBOLS (A) ETC. SEE STANDARD DETAIL DRAWING NO. C-1778
 CHECK WITH UTILITIES FOR LOCATIONS OF EXISTING STRUCTURES WHETHER OR NOT INDICATED ON PLANS
 BEFORE STARTING CONSTRUCTION

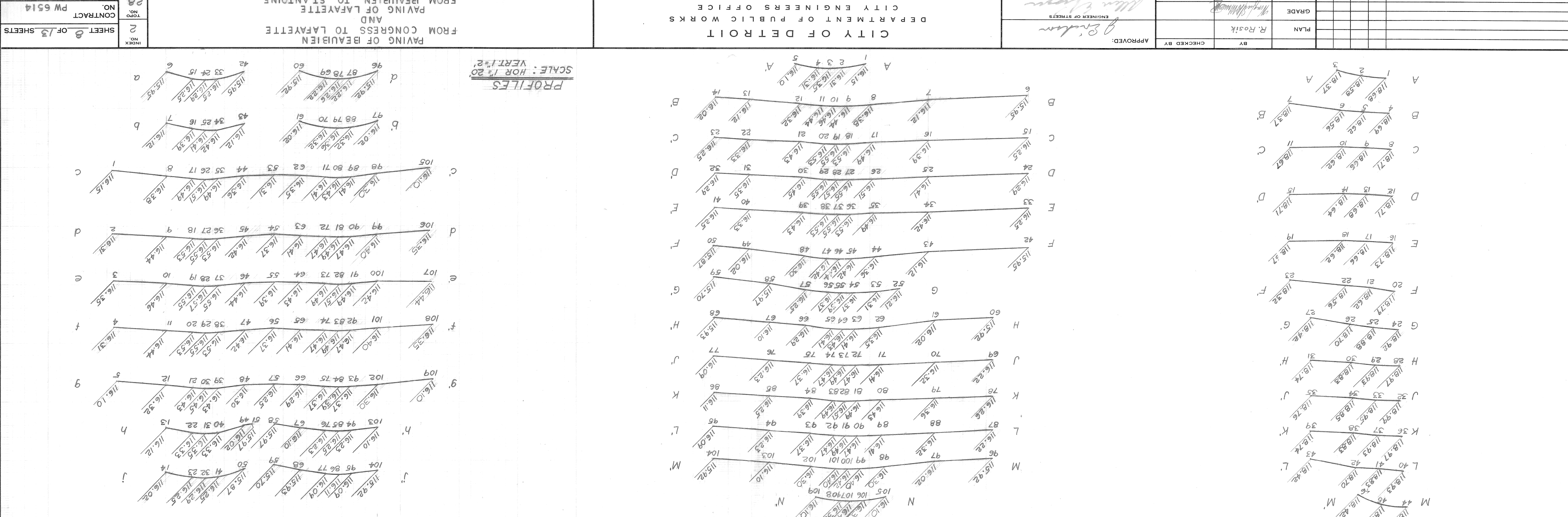
SCALE: HORIZONTAL 1"=20'
 VERTICAL 1"=20'

STRIP AND ADJUST ASPHALT SURFACE
 ADJUST ASPHALT SURFACE
 FORT 50' WD.
 ADJUST ASPHALT SURFACE



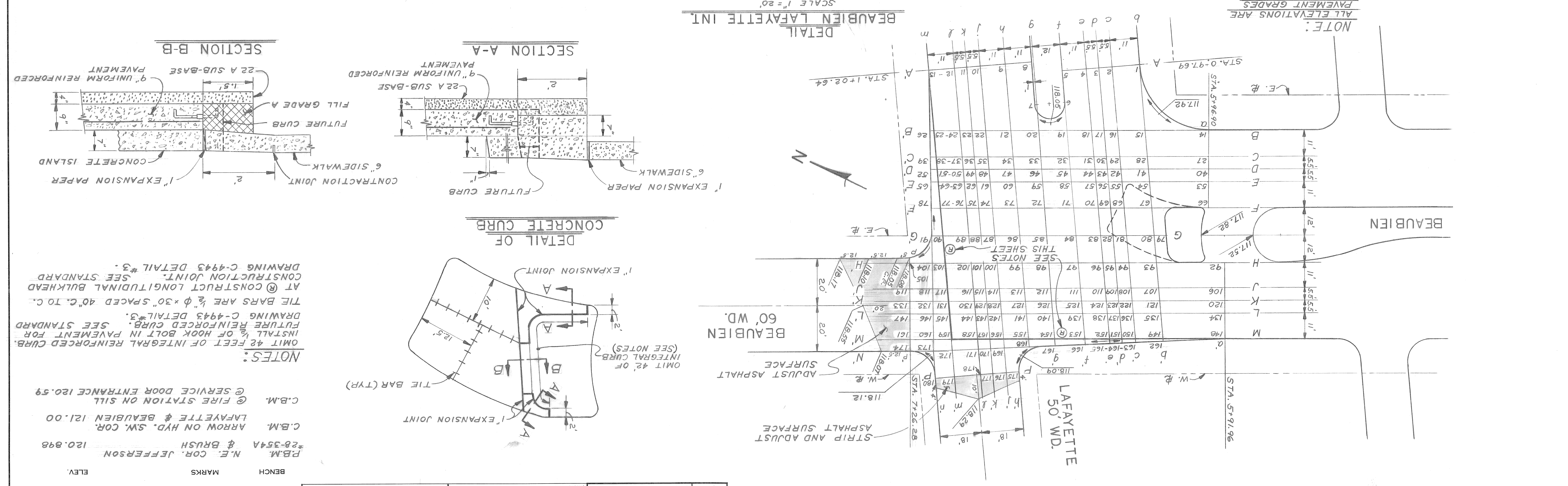
AS BUILT

NOTE:
 ALL ELEVATIONS ARE PAVEMENT GRADES



DATE	JUNE 30, 1972
ASSIGNMENT NO.	A01767A
CONTRACT NO.	PW 6514
SHEET NO.	8 OF 13 SHEETS

REVISIONS	DESCRIPTION	DATE	BY	CHECKED BY
GRADE QUANTITY CHANGED AT FORT				



NOTE: - FOR SYMBOLS (E, F, G, H, I, J, K, L, M, N, P, Q, R, S, T, U, V, W, X, Y, Z) SEE STANDARD DETAIL DRAWING NO. C-473.

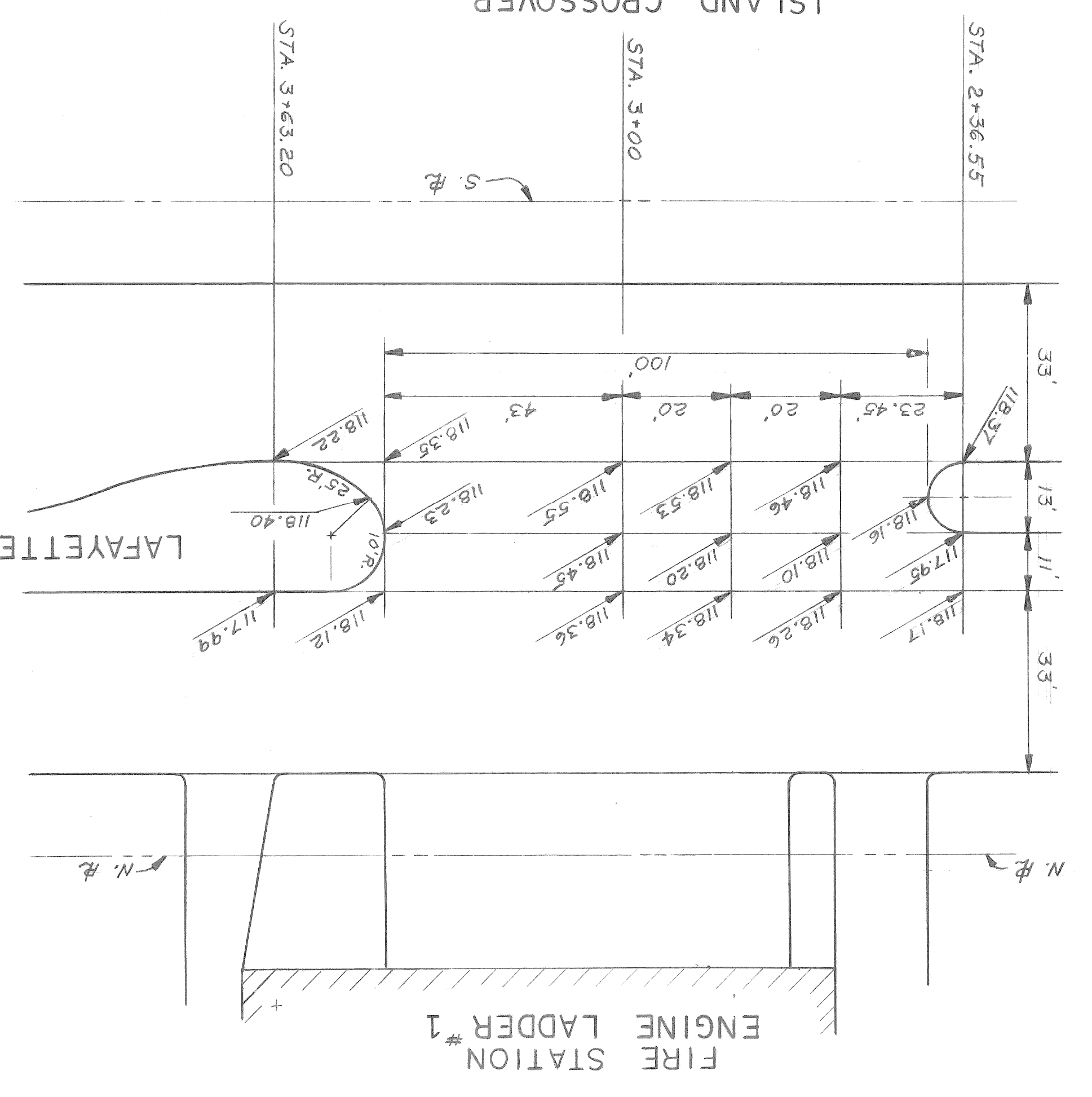
NOTE: BEFORE STARTING CONSTRUCTION, CHECK WITH UTILITIES FOR LOCATIONS OF EXISTING STRUCTURES WHETHER OR NOT INDICATED ON PLANS.

BOOK _____ **NO.** _____ **PG.** _____ **DATE** _____

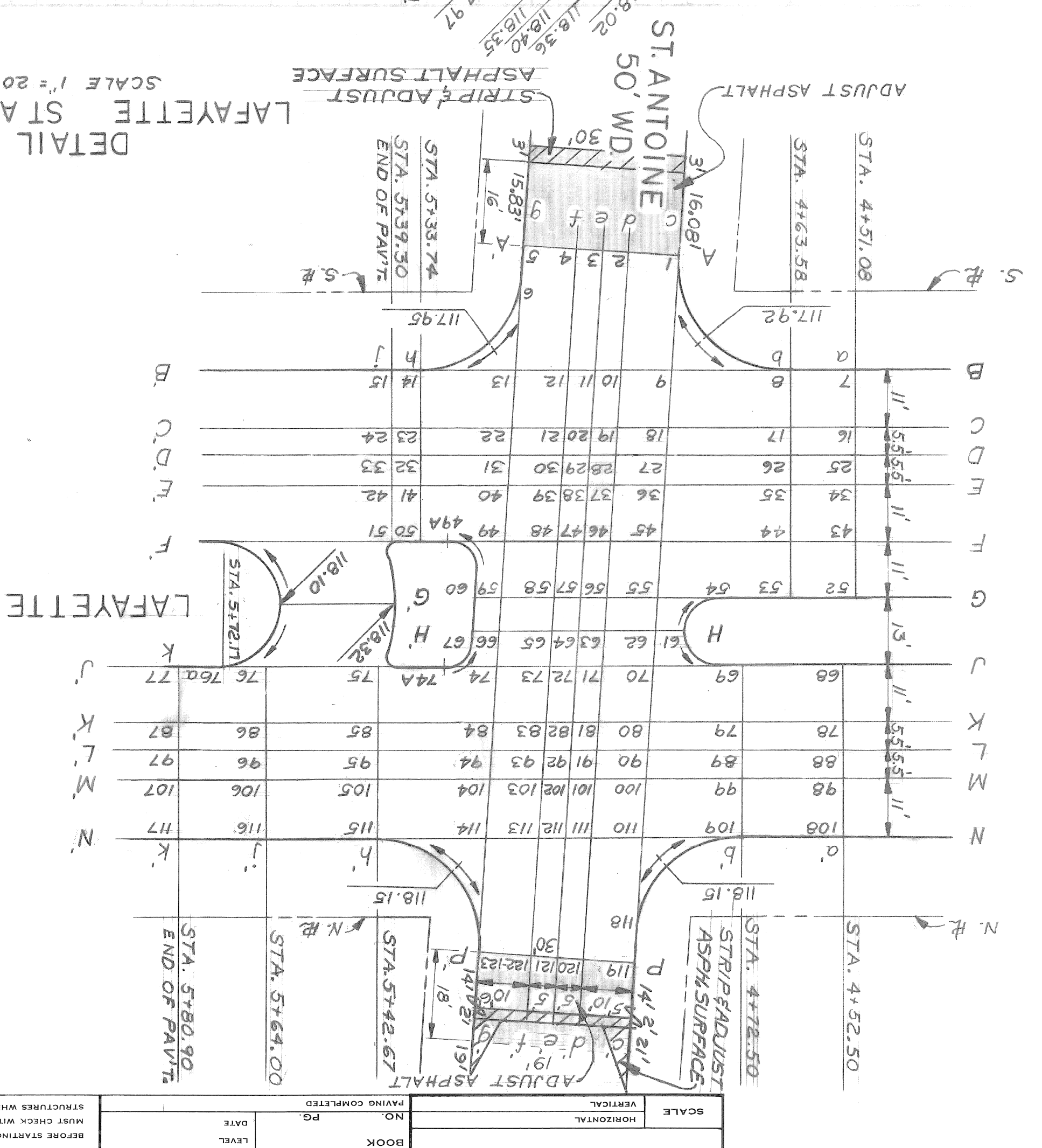
LEVEL _____ **PAVING COMPLETED** _____

BENCH _____ **MARKS** _____ **ELEV.** _____

NOTES:
 Omit 42 feet of integral reinforced curb.
 Install 1/2" of hook bolt in pavement for future reinforced curb. See standard drawing C-4943 detail #3.
 The bars are 1/2" φ x 30" spaced 40" c. to c. at construction longitudinal bulkhead construction joint. See standard drawing C-4943 detail #3.
 P.B.M. N.E. COR. JEFFERSON & BRUSH 120.898
 C.B.M. ARROW ON HYD. SW. COR. LAFAYETTE & BEAUBIEN 121.00
 C.B.M. @ FIRE STATION ON SILL @ SERVICE DOOR ENTRANCE 120.59



NOTE:
 ALL ELEVATIONS ARE
 PAVEMENT GRADES



DETAIL
 LAFAYETTE ST ANTOINE INT.
 ASPHALT SURFACE
 STRIP ADJUST

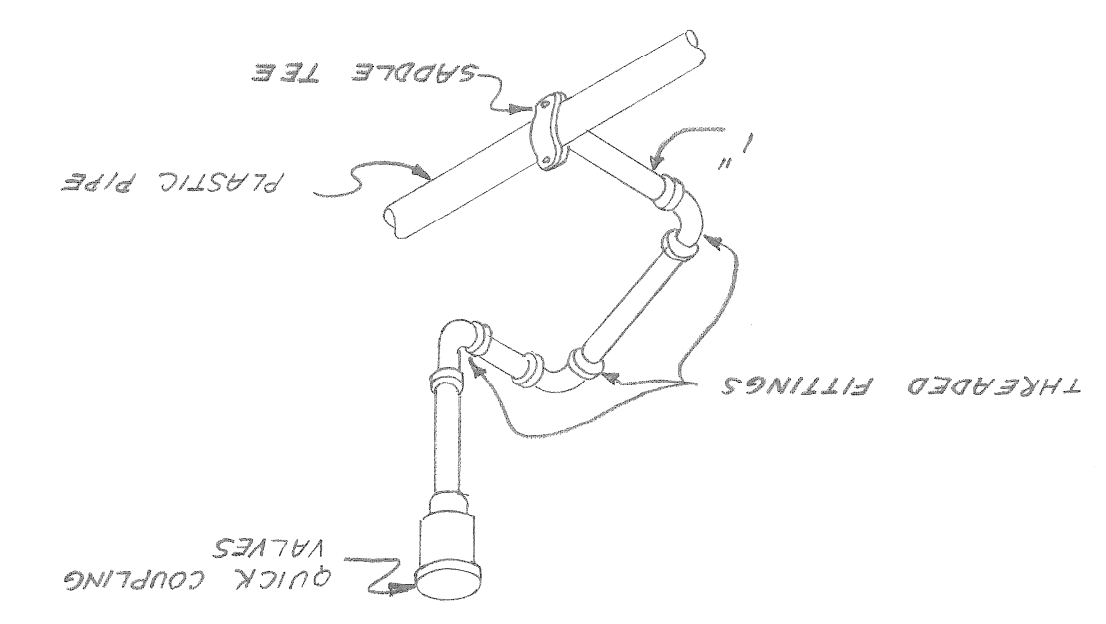
AS BUILT

NOTE - FOR SYMBOLS etc. SEE STANDARD DETAIL DRAWING NO. C-437E
 CONTRACTOR MUST CHECK WITH UTILITIES FOR LOCATIONS OF EXISTING STRUCTURES WHETHER OR NOT INDICATED ON PLANS.
 LEVEL PG. DATE
 BOOK NO. PAVING COMPLETED

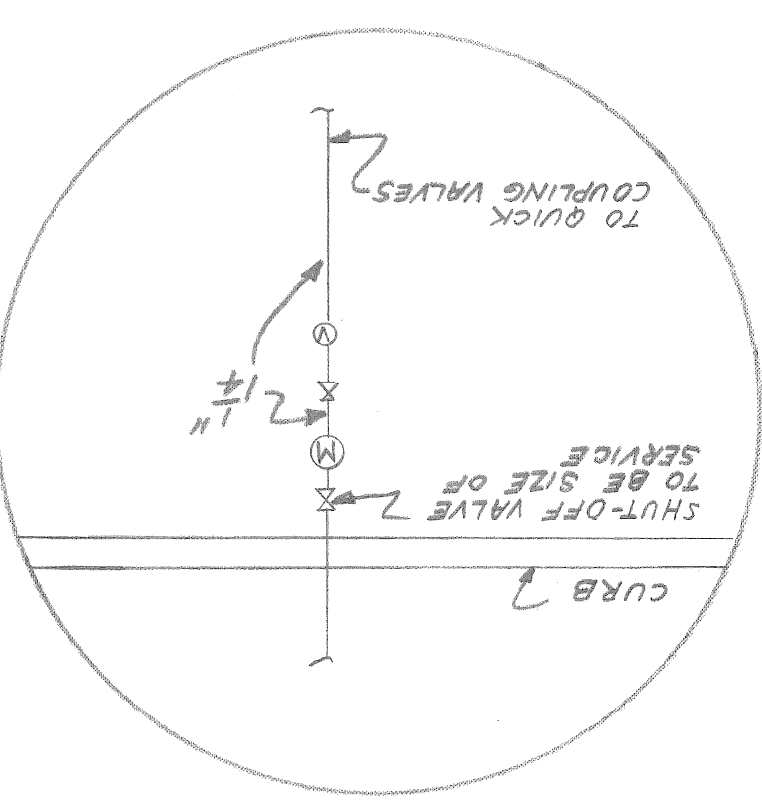
DATE JUNE 30, 1972	INDEXED NO. 28	ASSIGNMENT NO. A01767B	CONTRACT NO. PW 6514	SHEET 10 OF 13 SHEETS	INDEX NO. 2
INTERSECTION GRADE DETAILS LAFAYETTE AT FIRE STATION AND AT ST ANTOINE			PAVING OF BEAUBIEN AND FROM CONGRESS TO LAFAYETTE		
CITY OF DETROIT DEPARTMENT OF PUBLIC WORKS FOR CITY ENGINEERS OFFICE ENGINEER OF EXPRESSWAYS ENGINEER OF STREETS			APPROVED BY: <i>[Signature]</i> CHECKED BY: <i>[Signature]</i> BY: R. Rosik GRADE: C. SHARP ESTIMATE: <i>[Signature]</i> FINAL: <i>[Signature]</i>		
REVISIONS					
DESCRIPTION	DATE	BY	REVISIONS	DATE	BY

DATE	LAWN WATERING SYSTEM	CITY OF DETROIT DEPARTMENT OF PUBLIC WORKS CITY ENGINEERS OFFICE FOR	CITY ENGINEER	DESIGNED BY J. Meyer	APPROVED J. Meyer	MECHANICAL ENGINEER	DESIGNED BY J. Meyer	TRACED BY J. Meyer	CHECKED BY J. Meyer	REVISIONS LOCATED BY COORDINATES ON SHEET
DRWG NO.	PAVING OF LAFAYETTE FROM BEAUBIEN TO STANTOINE AND FROM CONGRESS TO LAFAYETTE									
CONTRACT NO. PW 6514										
SHEET 11 OF 13 SHEETS										

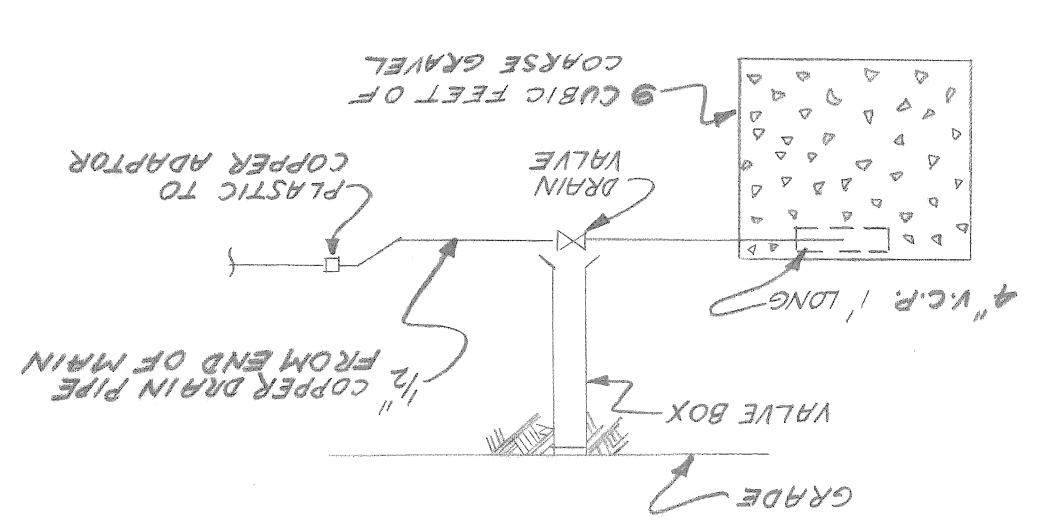
TYPICAL QUICK COUPLING VALVE
NO SCALE



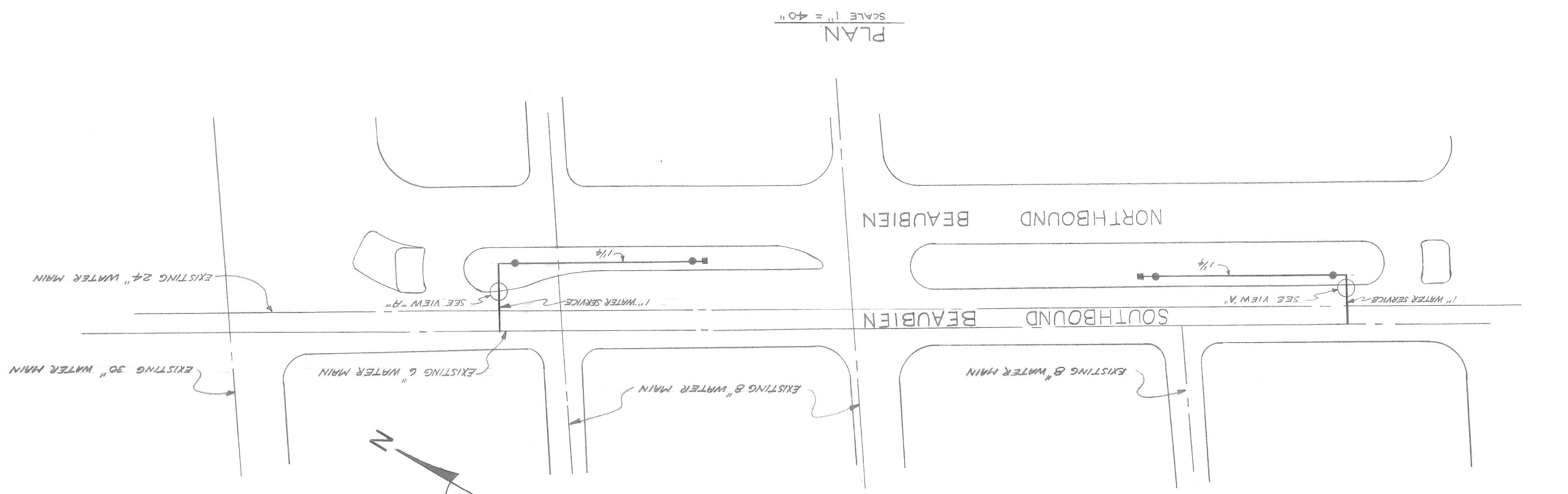
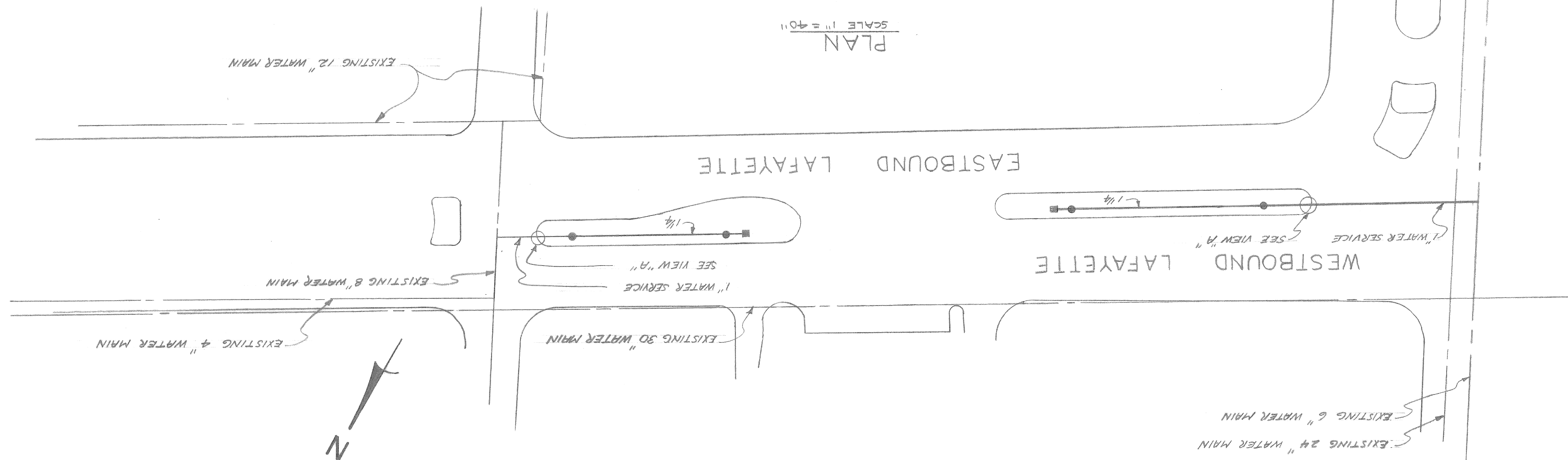
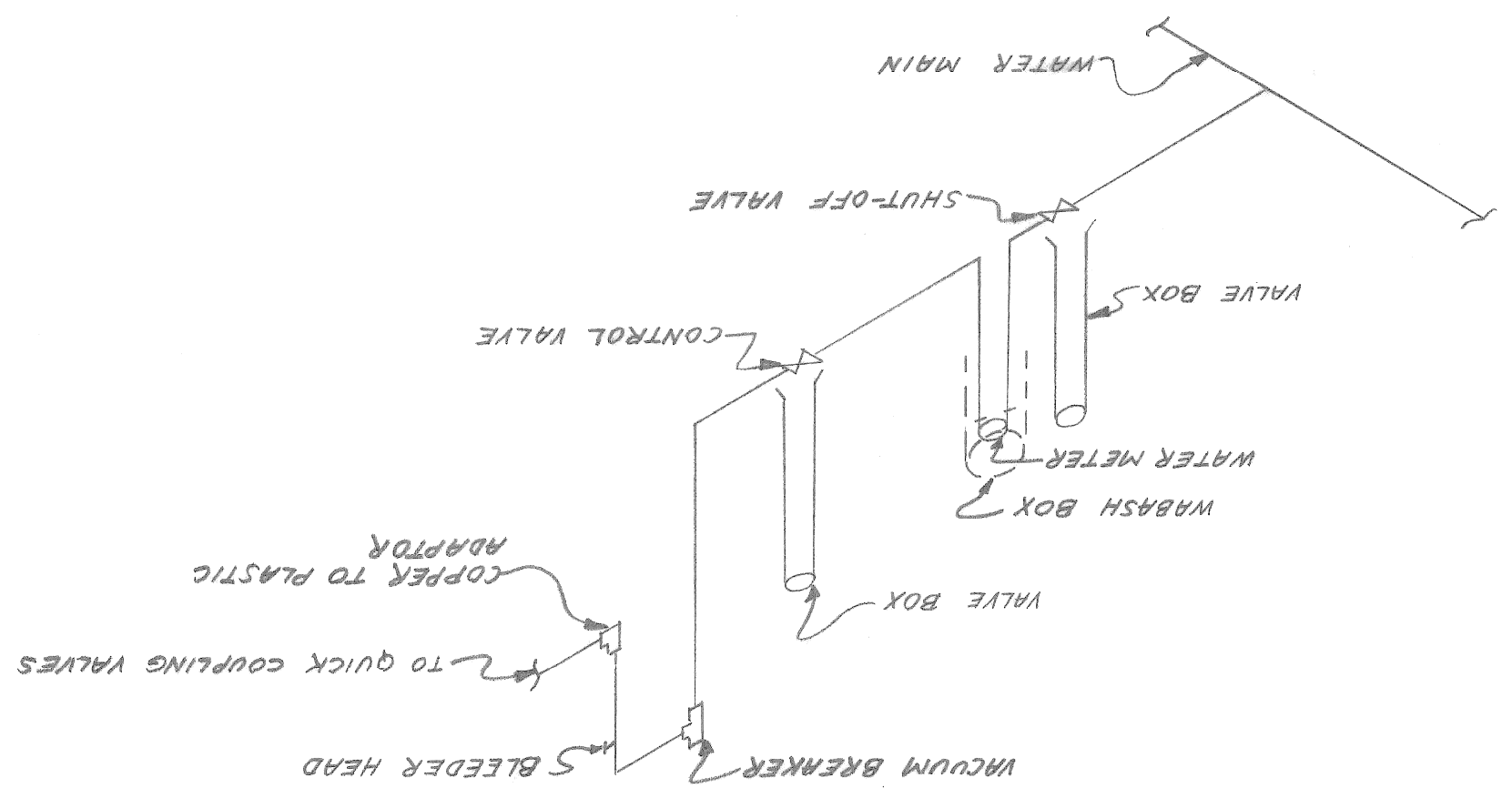
VIEW "A"
NO SCALE



DRAIN DETAIL
NO SCALE



WATER SUPPLY PIPING
NO SCALE



LEGEND

●	QUICK COUPLING VALVE
■	DRAIN VALVE
⊙	VACUUM BREAKER
⊗	WASH BOX & 1" METER
○	C.V. CONTROL VALVE

SHEET 12 OF 13 SHEETS CONTRACT NO. PW 6514 DRWG NO.	PAVING OF BEAUBIEN AND FROM CONGRESS TO LAFAYETTE PAVING OF LAFAYETTE FROM BEAUBIEN TO STANTOINE QUANTITY SHEET	CITY OF DETROIT DEPARTMENT OF PUBLIC WORKS FOR CITY ENGINEERS OFFICE	APPROVED: <i>[Signature]</i> ENGINEER OF STREETS ENGINEER OF EXPRESSWAYS	DESIGNED BY DRAWN BY R. Rosik TRACED BY CHECKED BY	REVISIONS LOCATED BY COORDINATES ON SHEET REFERENCE DRAWINGS
---	---	--	--	---	---

FOR PLC QUANTITIES SEE SHEET 13

* INCLUDES TYPE III CURBS, SEE STD. DRAWINGS C-4380 OR C-4381.
 * * CONSTRUCTION ONLY.
 * * * INCLUDED REINFORCED INTEGRAL CURBS, SEE STD. DRAWINGS C-4943.
 LEVELS WILL BE RETAKEN BEFORE CONSTRUCTION BEGINS AND
 QUANTITIES SHALL BE RECOMPUTED.

ITEM NO.	DESCRIPTION OF ITEM	SHEET 5	SHEET 6	SHEET 7	TOTAL	PAY UNIT
1	EXCAVATION	—	2916	35	9145	CYDS.
2	BERM GRADING	—	—	—	—	SYDS.
3	STREET PAVEMENT REMOVAL - UNREINFORCED	4658	—	—	4658	SYDS.
4	STREET CAR RAIL REMOVAL	260	—	—	260	LFT.
5	STREET CAR TRACK BASE REMOVAL	96	—	—	96	SYDS.
6	NON-REINFORCED CONCRETE REMOVAL	88	—	—	88	CYDS.
7	REINFORCED CONCRETE REMOVAL	36	—	—	36	CYDS.
8	CONCRETE SLAB REMOVAL	100	—	—	100	SYDS.
9	REINFORCED CONCRETE SLAB REMOVAL	1067	—	—	1067	SYDS.
10	INTEGRAL CURB AND WALK REMOVAL	481	—	—	481	LFT.
11	INTEGRAL TYPE CURB REMOVAL	40	—	—	40	LFT.
12	ALLEY PAVEMENT REMOVAL	133	—	—	133	SYDS.
13	SINGLE BEAM GUARD RAIL REMOVAL	290	—	—	290	LFT.
14	DRIVEWAY REMOVAL	2030	—	—	2030	SFT.
15	SIDEWALK REMOVAL	16590	—	—	16590	SFT.
16	FILL - (GRADE A)	—	4303	1381	5684	CYDS.
17	FILL (22A)	—	825	1219	2044	CYDS.
18	STRIP AND ADJUST ASPHALT SURFACE	—	441	41	482	SYDS.
19	ADJUST ASPHALT SURFACE	—	140	94	234	SYDS.
20	STOP BOX ADJUSTMENT	—	4	2	6	EA.
21	MANHOLE ADJUSTMENT	—	13	19	32	EA.
22	MANHOLE - RECONSTRUCT CONE	—	—	—	1	EA.
23	CATCH BASIN "A" - NEW	—	3	7	10	EA.
24	CATCH BASIN "B" - NEW	—	4	4	8	EA.
25	CATCH BASIN "B" WITH TRAP - NEW	—	3	5	8	EA.
26	CATCH BASIN - ADJUSTMENT	—	—	—	5	EA.
27	CATCH BASIN - ABANDONMENT	15	—	—	15	EA.
28	SEWERS - 12" PIPE	—	210	560	770	LFT.
29	SEWERS - 15" PIPE	—	40	—	40	LFT.
30	SEWERS UNDER PAVEMENT - 15" PIPE	—	10	—	10	LFT.
31	PAVEMENT - 9" UNIFORM NON-REINFORCED *	—	187	195	382	SYDS.
32	PAVEMENT - 9" UNIFORM REINFORCED ***	—	4930	5730	10660	SYDS.
33	TEMPORARY PAVEMENT - 8" AGGREGATE BASE + 2" ASPHALT	—	—	143	143	SYDS.
34	SEPARATE TYPE CURB - REINFORCED	—	—	24	24	LFT.
35	SEPARATE TYPE CURB - NON-REINFORCED	—	—	251	251	LFT.
36	TEST CORES	—	4	5	9	EA.
37	SIDEWALKS 4" STANDARD **	—	13316	12275	25591	SFT.
38	SIDEWALKS 6" STANDARD **	—	3040	2433	5473	SFT.
39	SODDING	—	693	539	1232	SYDS.
40	CHAIN LINK FENCE - 4 FEET	—	—	748	748	LFT.
41	TOP SOIL	—	87	87	154	CYDS.
42	DRIVEWAYS 8" STANDARD	—	507	2066	2573	SFT.
43	LAWN WATERING SYSTEM	—	—	—	—	LUMP SUM
44	CONCRETE ISLAND	—	—	475	475	SFT.
45	MAINTAINING TRAFFIC	—	—	—	—	LUMP SUM

PAVING OF BEAUBIEN AND FROM CONGRESS TO LAFAYETTE
 SHEET 12 OF 13 SHEETS

A
B
C
D
E
F
G

A
B
C
D
E
F
G