

SCALE	HORIZONTAL 1" = 40'	VERTICAL 1" = 4'
BOOK	LL 30 F (3)	LEVEL 9-1-70
DATE	9-1-70	CONTRACTOR
BY		PAVING COMPLETED

NOTE - FOR SYMBOLS (C) ETC. SEE STANDARD DETAIL DRAWING NO. C-173

WORK SHOWN CONSTRUCTION - CONTRACTOR

MARKS WHICH UTILIZE FOR LOCATION OF EXISTING STRUCTURES WHETHER OR NOT INDICATED ON PLANS.

CONTRACT NO. 30

DATE JUNE 11, 1973

CONSTRUCTION LEGEND

- ADJUST ASPHALT SURFACE
- STRIP AND ADJUST ASPHALT SURFACE
- SIDEWALK - STANDARD 6"
- SIDEWALK - STANDARD 4"
- UNIFORM UNREINFORCED PAVEMENT WITH INTEGRAL CURB.
- CONCRETE BASE PAVEMENT + 2" ASPHALT
- SEPARATE TYPE CURB - UNREINFORCED
- SEPARATE TYPE CURB - REINFORCED
- BITUMINOUS CONCRETE CURB
- CONSTRUCT CATCH BASIN 'A'
- CONSTRUCT CATCH BASIN 'B'
- CONSTRUCT CATCH BASIN 'B' WITH TRAP
- ADJUST EXISTING MANHOLE
- ADJUST EXISTING MANHOLE
- CONST. SIDEWALK RAMP - TYPE AS SHOWN

NOTE:

PAVEMENT TO BE 9" UNIFORM REINFORCED CONCRETE WITH REINFORCED INTEGRAL CURB, UNLESS OTHERWISE NOTED

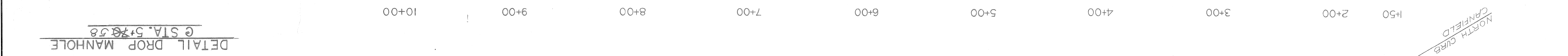
FOR HORIZONTAL CONTROL SEE SH. # 3.

FOR PLAN AND QUANTITIES SEE SHEET # 9.

CONSTRUCTION ON CANFIELD DRIVE IS ADDED TO THIS CONTRACT THROUGH CHANGE ORDER # 1.

RESURFACING AND INTEGRAL CURB & WALK

PLAN SCALE: 1" = 40'



DATE	JUNE 11, 1973
ASSIGNMENT NO.	AO 1976
CONTRACT NO.	PW 6510
SHEET NO.	40
TOTAL SHEETS	7 OF 37 SHEETS

PAVING OF BEAUBIEN - ST. ANTOINE BLVD.
CANFIELD TO WARREN
MEDICAL CENTER REHABILITATION PROJECT NO. 3 MICH. R-112

CITY OF DETROIT
DEPARTMENT OF PUBLIC WORKS
FOR CITY ENGINEERS OFFICE
COMMUNITY DEVELOPMENT COMMISSION

APPROVED BY	CLARK	CHECKED BY	
ENGINEER OF STREETS		ENGINEER OF HIGHWAYS	
ESTIMATE	M. S. SHARP	CHECK	C. S.
FINAL		REVIEW	

REVISIONS	
NO.	DESCRIPTION
1	ADDED NOTE - RECURRING CURB & WALK
2	ADDED NOTE - RECURRING CURB & WALK
3	ADDED NOTE - RECURRING CURB & WALK
4	ADDED NOTE - RECURRING CURB & WALK
5	ADDED NOTE - RECURRING CURB & WALK
6	ADDED NOTE - RECURRING CURB & WALK
7	ADDED NOTE - RECURRING CURB & WALK
8	ADDED NOTE - RECURRING CURB & WALK
9	ADDED NOTE - RECURRING CURB & WALK

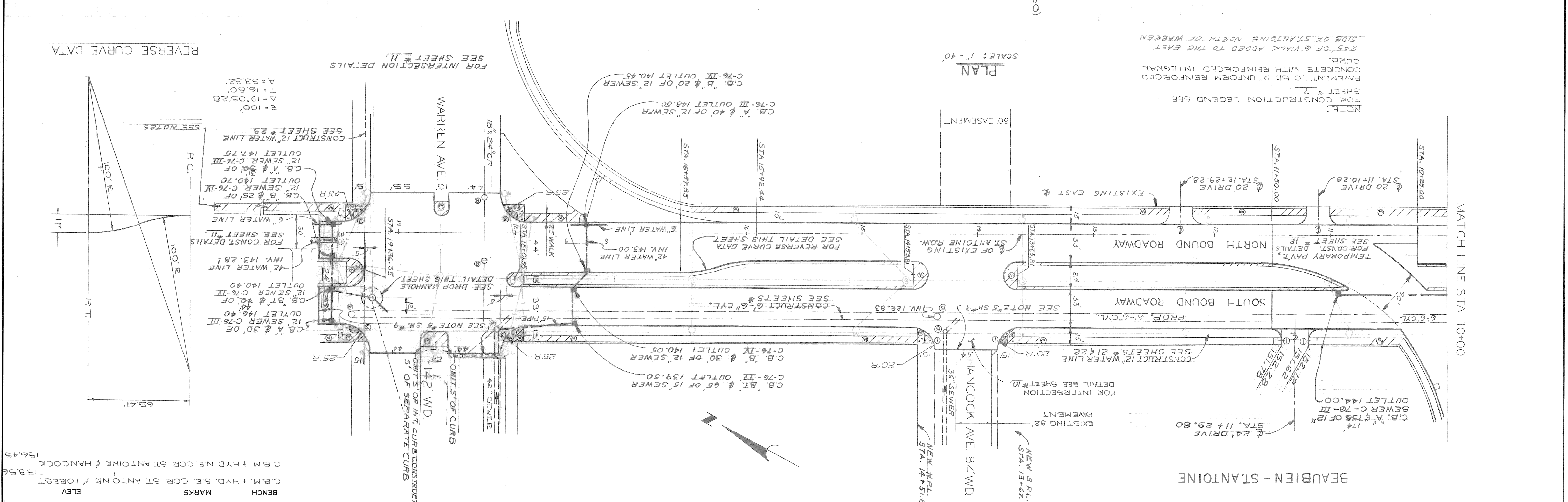
DATE JUNE 11, 1973
 INDEX NO. 30
 ASSIGNMENT NO. A.O. 1976
 CONTRACT NO. PW 6510
 SHEET 8 OF 37 SHEETS

PAVING OF BEAUBIEN-ST ANTOINE BLVD.
 CANFIELD TO WARREN
 MEDICAL CENTER REHABILITATION PROJECT NO. 3 MICH-R-112
 STA. 10+00 TO STA. 19+65
 PAVING PLAN

CITY OF DETROIT
 DEPARTMENT OF PUBLIC WORKS
 CITY ENGINEERS OFFICE
 FOR
 COMMUNITY DEVELOPMENT COMMISSION

REVISIONS		
NO.	DESCRIPTION	DATE
1	AS BUILT CHANGES ADDED	
2	245' OF SIDEWALK - SEE NOTES	
3	REVISIONS	
4	ADDED DRIVES, WHEEL CHAIR RAMPS	
5	ADDITION OF ELECTRIC DUCTS & STDS.	

BY	CHECKED BY	APPROVED BY
CLARK		
McGREGOR		
C. S. HARRIS		

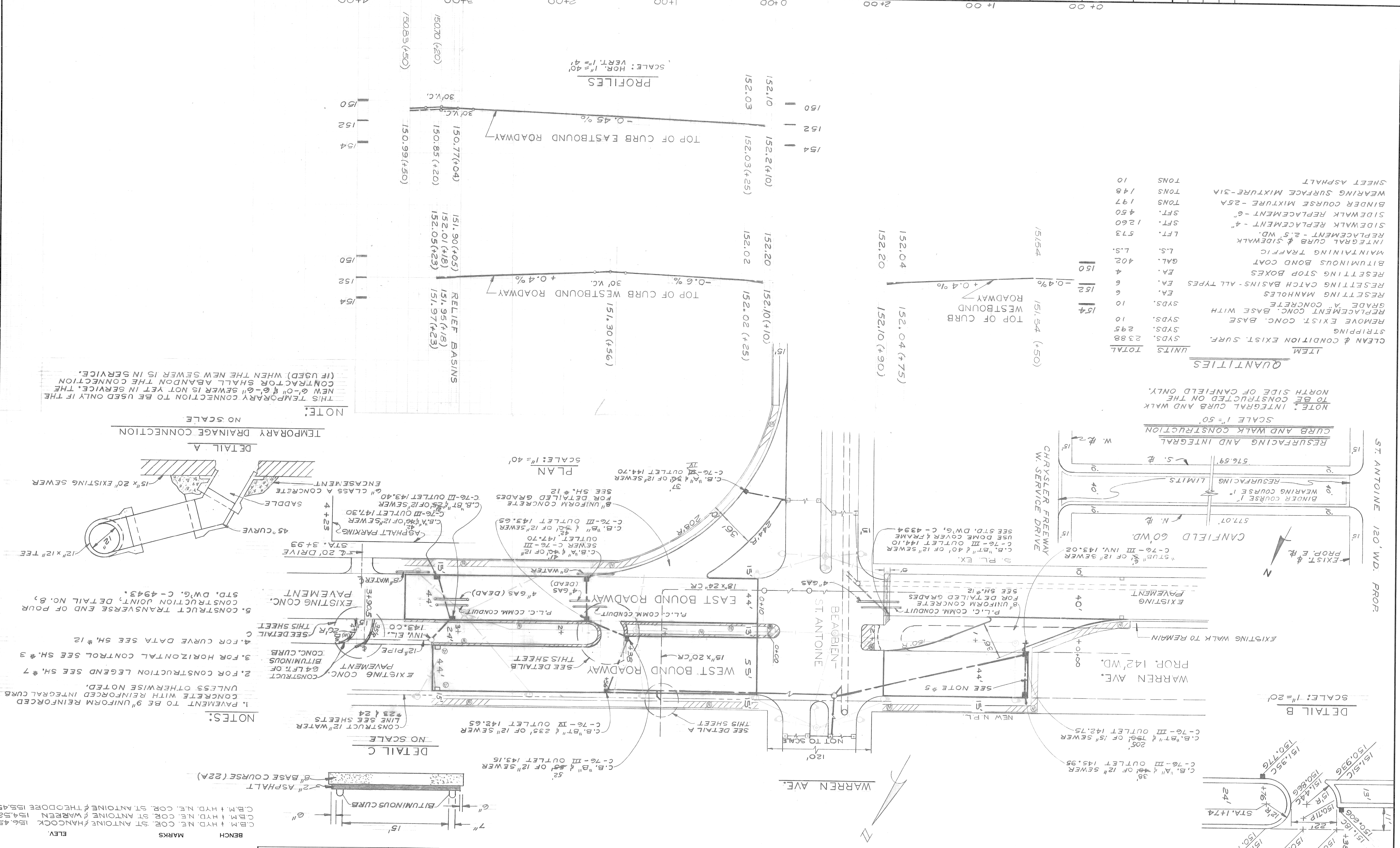


NOTE - FOR SYMBOLS (C) ETC. SEE STANDARD DETAIL DRAWING NO. C-173
 BEFORE STARTING CONSTRUCTION - CONTRACTOR MUST CHECK WITH UTILITIES FOR LOCATIONS OF EXISTING STRUCTURES WHETHER OR NOT INDICATED ON MAP.
 LEVEL 9-1-70
 BOOK 1 L 30 P (3)
 DATE 9-1-70
 SCALE: HORIZONTAL 1" = 40', VERTICAL 1" = 4'
 BENCH MARKS: C.B.M. # HYD. S.E. COR. ST. ANTOINE & FOREST 153.56, C.B.M. # HYD. N.E. COR. ST. ANTOINE & HANCOCK 156.45

PAVING OF BEAUBIEN-ST. ANTOINE BLVD.
 CANFIELD TO WARREN
 MEDICAL CENTER REHABILITATION PROJECT NO. 3 MICH. R-112
 PAVING PLAN - WARREN AVE.
 150' W. OF ST. ANTOINE TO 350' E. OF ST. ANTOINE

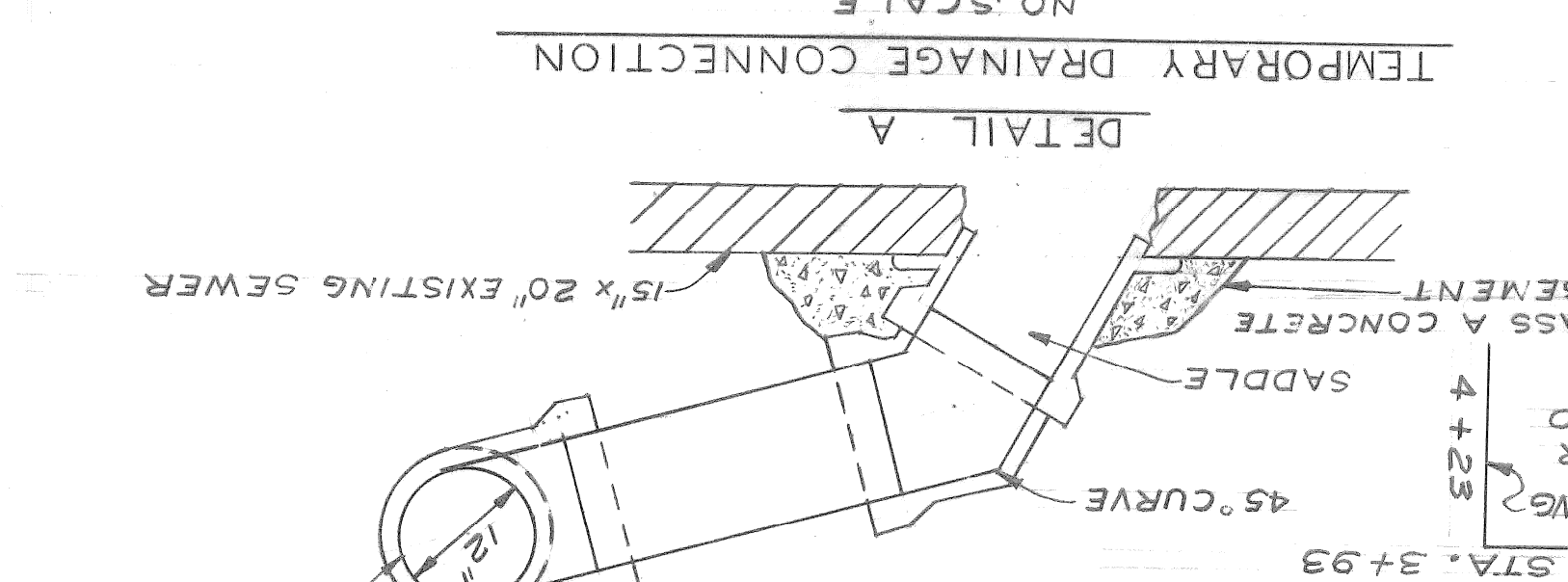
CITY OF DETROIT
 DEPARTMENT OF PUBLIC WORKS
 CITY ENGINEERS OFFICE
 FOR
 COMMUNITY DEVELOPMENT COMMISSION

REVISIONS		APPROVED BY	ENGINEER OF STREETS	ENGINEER OF EXPRESSWAYS
AS BUILT CHANGES ADDED	RR WT		C. SHARP	
TURNAROUNDS DRIVE-WARREN C.O.#3	MR			
ADDED RESURFACING CANFIELD	MR			
DESCRIPTION		BY	CHECKED BY	APPROVED BY
ESTIMATE	DRN	B. B. U.		
FINAL	CK'D			
DATE	MR			
NO.	DATE			

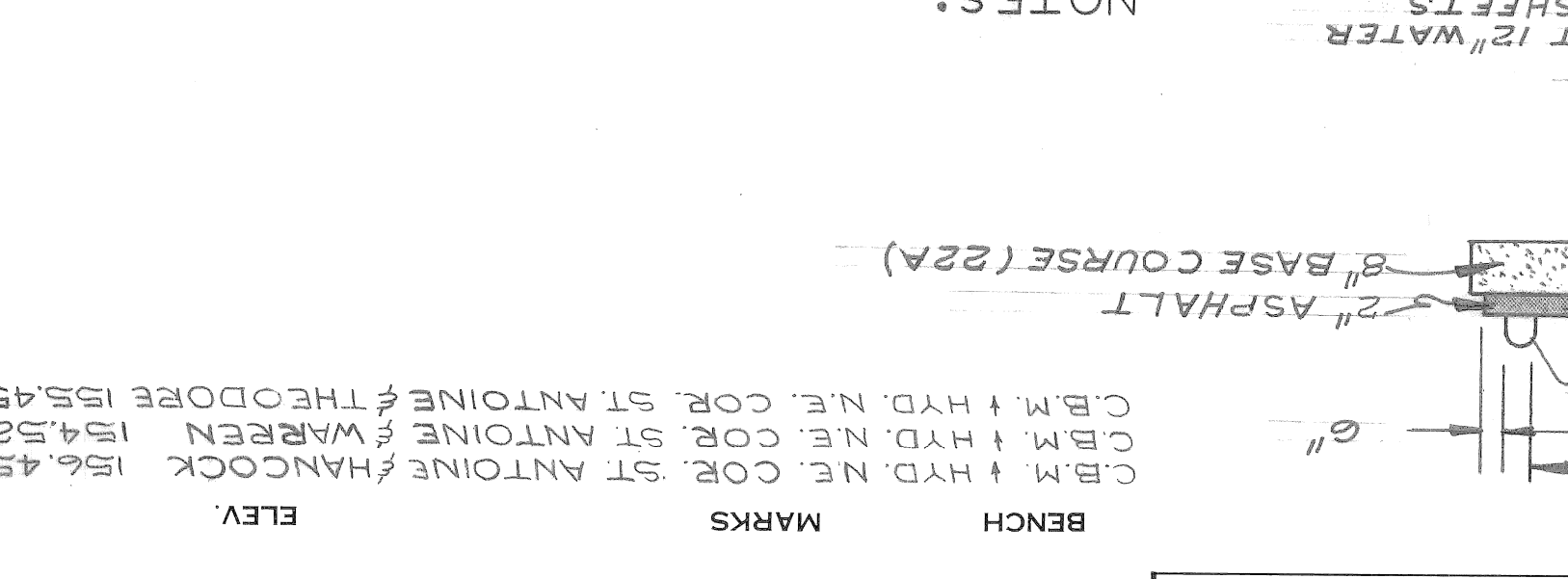


BOOK	REV.	DATE	BY	SCALE
LL 30 F (S)	9-24-71			HORIZONTAL 1" = 40'
NOTE - FOR SYMBOLS ETC. SEE STANDARD DETAIL DRAWING NO. C-137				

NOTE: INTEGRAL CURB AND WALK TO BE CONSTRUCTED ON THE NORTH SIDE OF CANFIELD ONLY.
 SCALE 1" = 50'



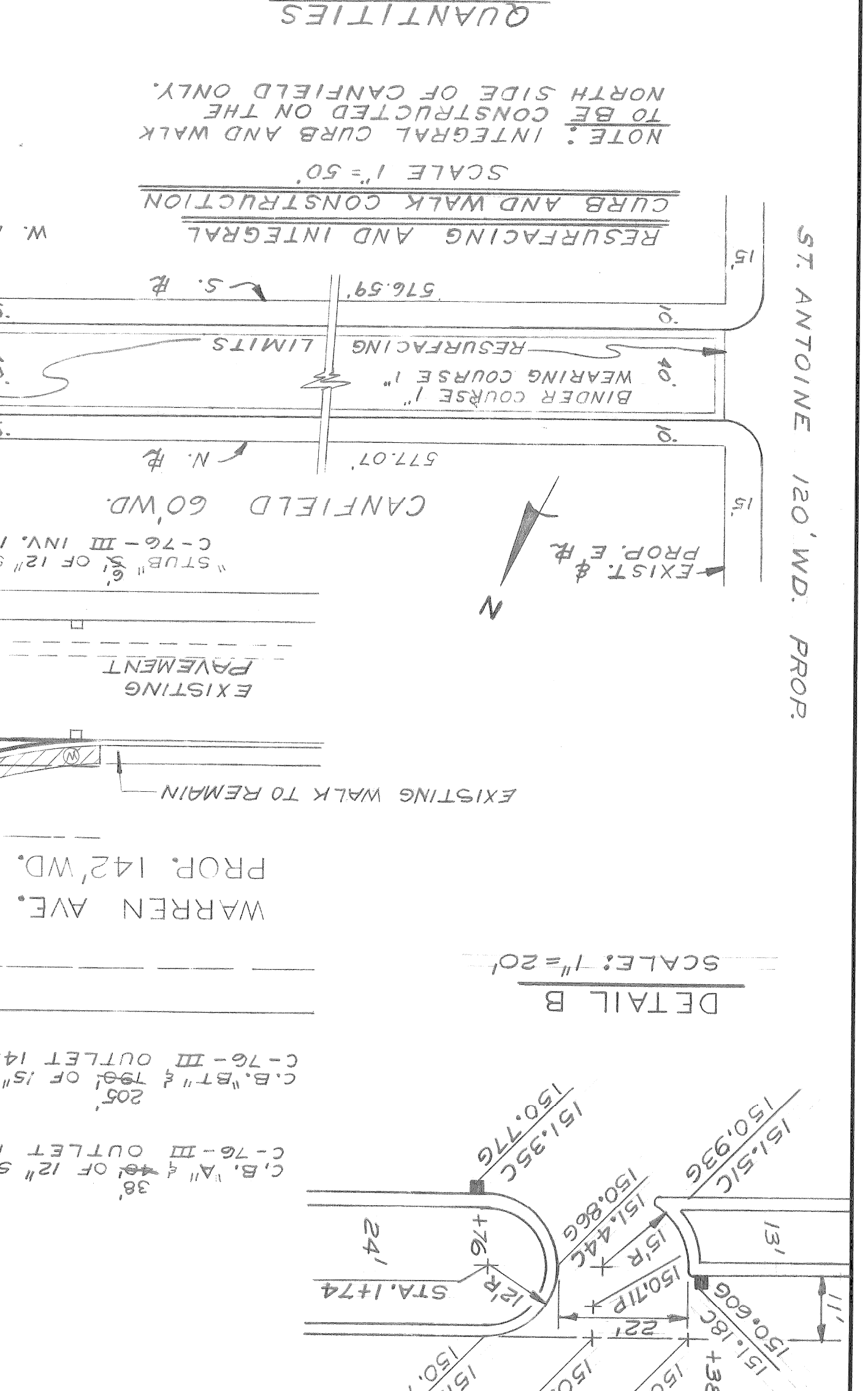
NOTE: 1. PAVEMENT TO BE 9" UNIFORM REINFORCED CONCRETE WITH REINFORCED INTEGRAL CURB UNLESS OTHERWISE NOTED.
 2. FOR CONSTRUCTION LEGEND SEE SH. # 7
 3. FOR HORIZONTAL CONTROL SEE SH. # 3
 4. FOR CURVE DATA SEE SH. # 12
 5. CONSTRUCT TRANSVERSE END OF POUR CONSTRUCTION JOINT, DETAIL NO. 8, STD. DWG. C-4943.



NOTE: 1. PAVEMENT TO BE 9" UNIFORM REINFORCED CONCRETE WITH REINFORCED INTEGRAL CURB UNLESS OTHERWISE NOTED.
 2. FOR CONSTRUCTION LEGEND SEE SH. # 7
 3. FOR HORIZONTAL CONTROL SEE SH. # 3
 4. FOR CURVE DATA SEE SH. # 12
 5. CONSTRUCT TRANSVERSE END OF POUR CONSTRUCTION JOINT, DETAIL NO. 8, STD. DWG. C-4943.

QUANTITIES

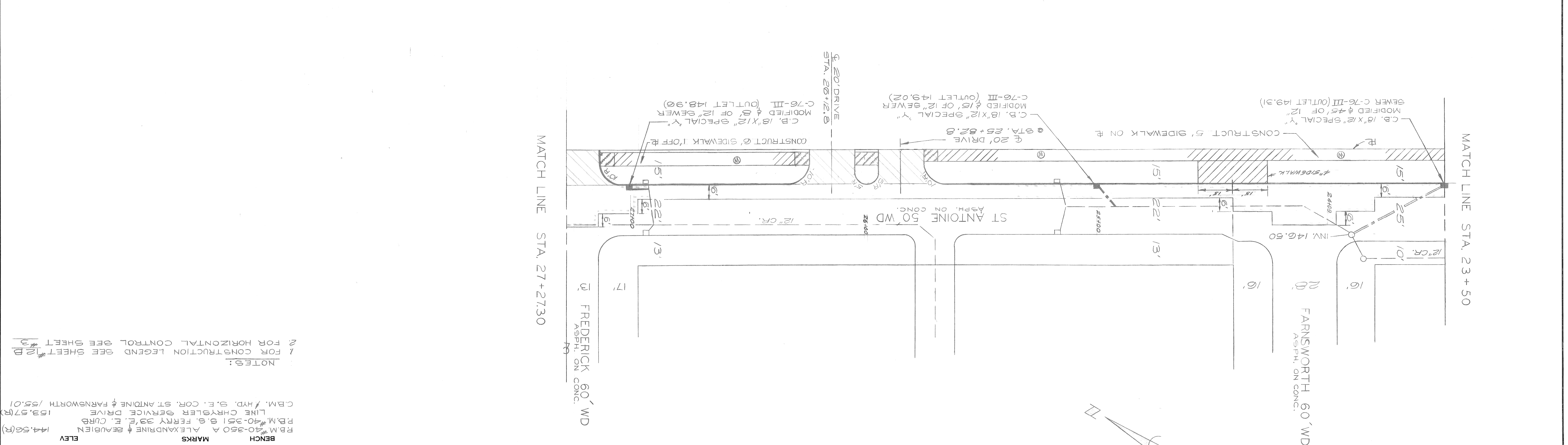
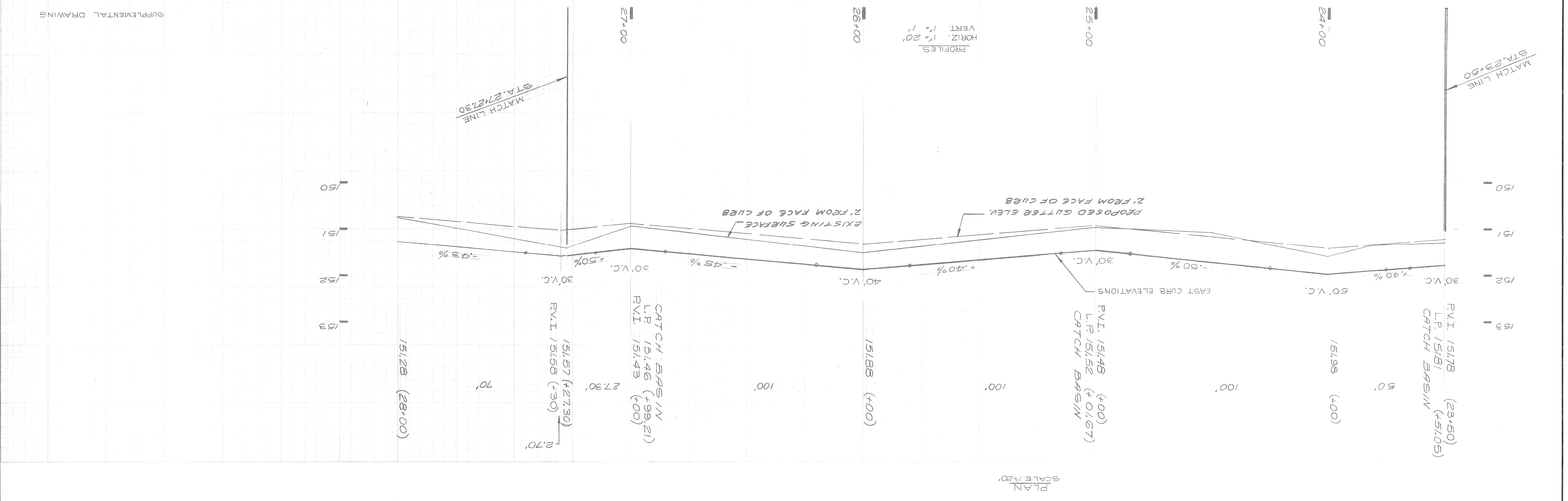
ITEM	UNITS	TOTAL
CLEAN & CONDITION EXIST. SURF.	SYDS.	23.88
STRIPPING	SYDS.	2.95
REMOVE EXIST. CONC. BASE	SYDS.	10
REPLACEMENT CONC. BASE WITH GRADE A CONCRETE	SYDS.	10
RESETTING MANHOLES	EA.	6
RESETTING CATCH BASINS - ALL TYPES	EA.	6
RESETTING STOP BOXES	EA.	4
BITUMINOUS BOND COAT	GAL.	402
MAINTAINING TRAFFIC	L.S.	573
INTEGRAL CURB & SIDEWALK REPLACEMENT - 2.5' WD.	LFT.	573
SIDEWALK REPLACEMENT - 4"	SFT.	1260
SIDEWALK REPLACEMENT - 6"	SFT.	450
BINDER COURSE MIXTURE - 25A	TONS	197
WEARING SURFACE MIXTURE - 31A	TONS	148
SHEET ASPHALT	TONS	10



NOTE: 1. PAVEMENT TO BE 9" UNIFORM REINFORCED CONCRETE WITH REINFORCED INTEGRAL CURB UNLESS OTHERWISE NOTED.
 2. FOR CONSTRUCTION LEGEND SEE SH. # 7
 3. FOR HORIZONTAL CONTROL SEE SH. # 3
 4. FOR CURVE DATA SEE SH. # 12
 5. CONSTRUCT TRANSVERSE END OF POUR CONSTRUCTION JOINT, DETAIL NO. 8, STD. DWG. C-4943.

Sewer Approved
Q. Gandy
 6/23/75

REVISED			REVISIONS		
NO.	DATE	DESCRIPTION	BY	DATE	DESCRIPTION
1	7-14-75	FINAL	W.L.T.		
2		ESTIMATE	W.L.T.		
3		GRADE	W.L.T.		
4		PLAN	W.L.T.		



BOOK NO. 150F(3)	DATE 4-11-75 R	SCALE HORIZONTAL 1" = 40'
REV. 1-52	DATE 4-11-75 R	SCALE VERTICAL 1" = 40'

NOTE - FOR SYMBOLS ETC. SEE STANDARD DETAIL DRAWING NO. C-178
 CONTRACTOR MUST CHECK WITH UTILITIES FOR LOCATIONS OF EXISTING STRUCTURES WHETHER OR NOT INDICATED ON PLANS.
 BEFORE STARTING CONSTRUCTION.
 BENCH MARKS
 14.56(R) P.B.M. #20-350 A ALEXANDRINE & BEAUBIEN
 14.56(R) P.B.M. #40-351 S. FERRY 33'E. E. CURB
 153.57(R) LINE CHRYSLER SERVICE DRIVE
 C.B.M. / HYD. S. E. COR. ST. ANTOINE & FARNSWORTH / 55.01

NOTES:
 1 FOR CONSTRUCTION LEGEND SEE SHEET #2 B
 2 FOR HORIZONTAL CONTROL SEE SHEET #3

SUPPLEMENTAL DRAWING

Sewer Approved 6/23/75
C. B. M. & F. E.

REVISIONS	
NO.	DESCRIPTION

PLAN	GRADE	ESTIMATE	FINAL

BY	CHECKED BY	APPROVED BY
W.L.T.	W.L.T.	W.L.T.
W.L.T.	W.L.T.	W.L.T.
W.L.T.	W.L.T.	W.L.T.

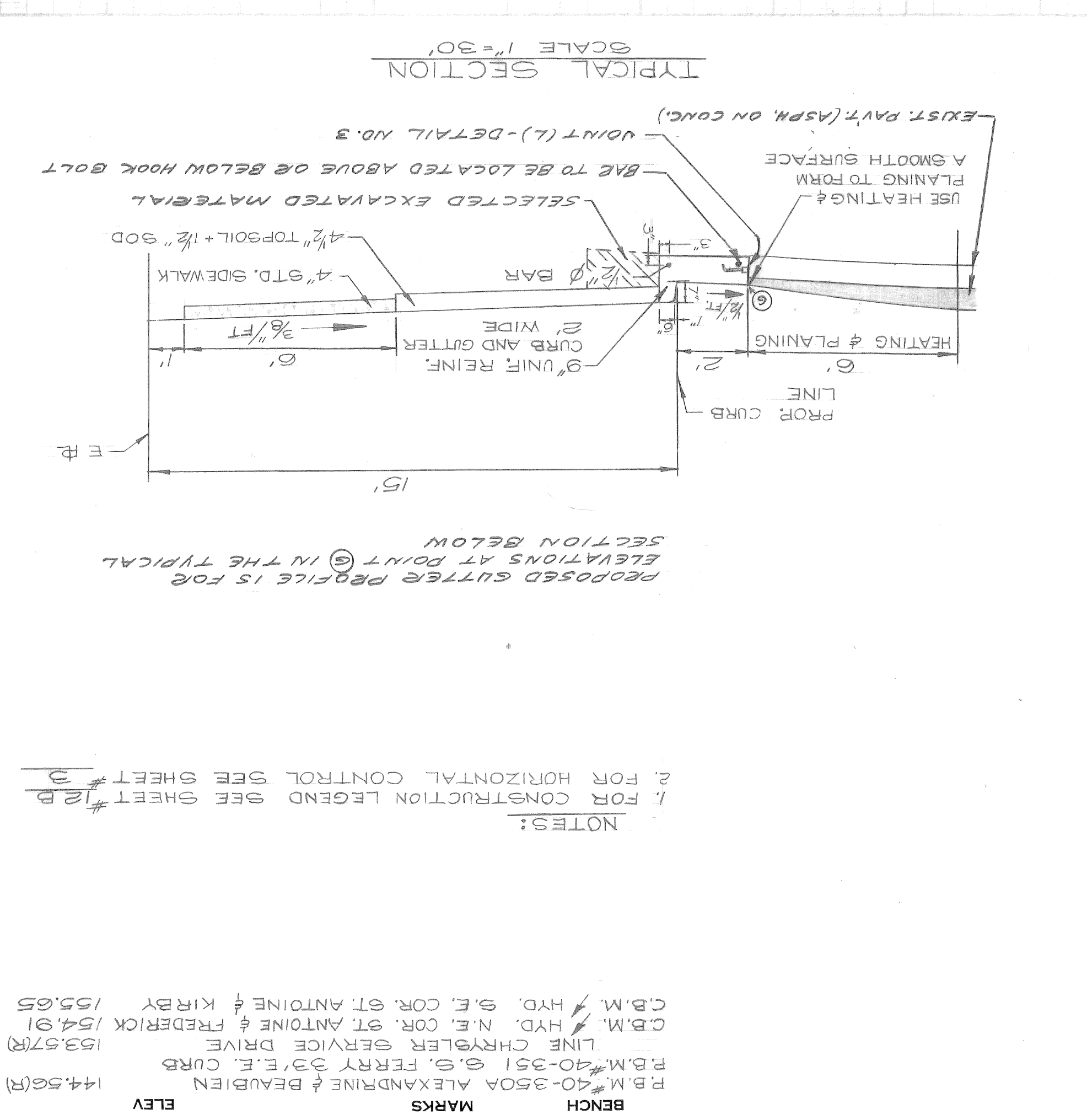
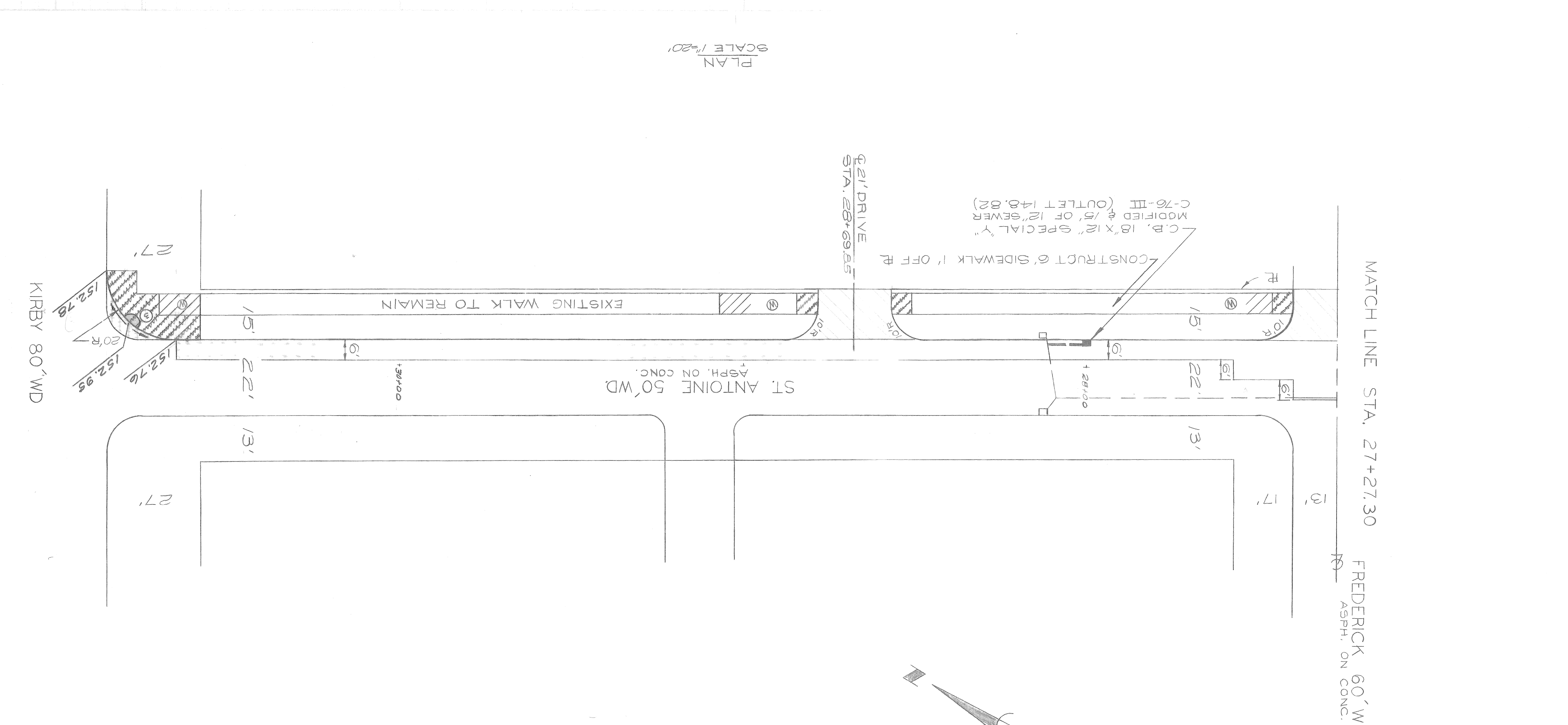
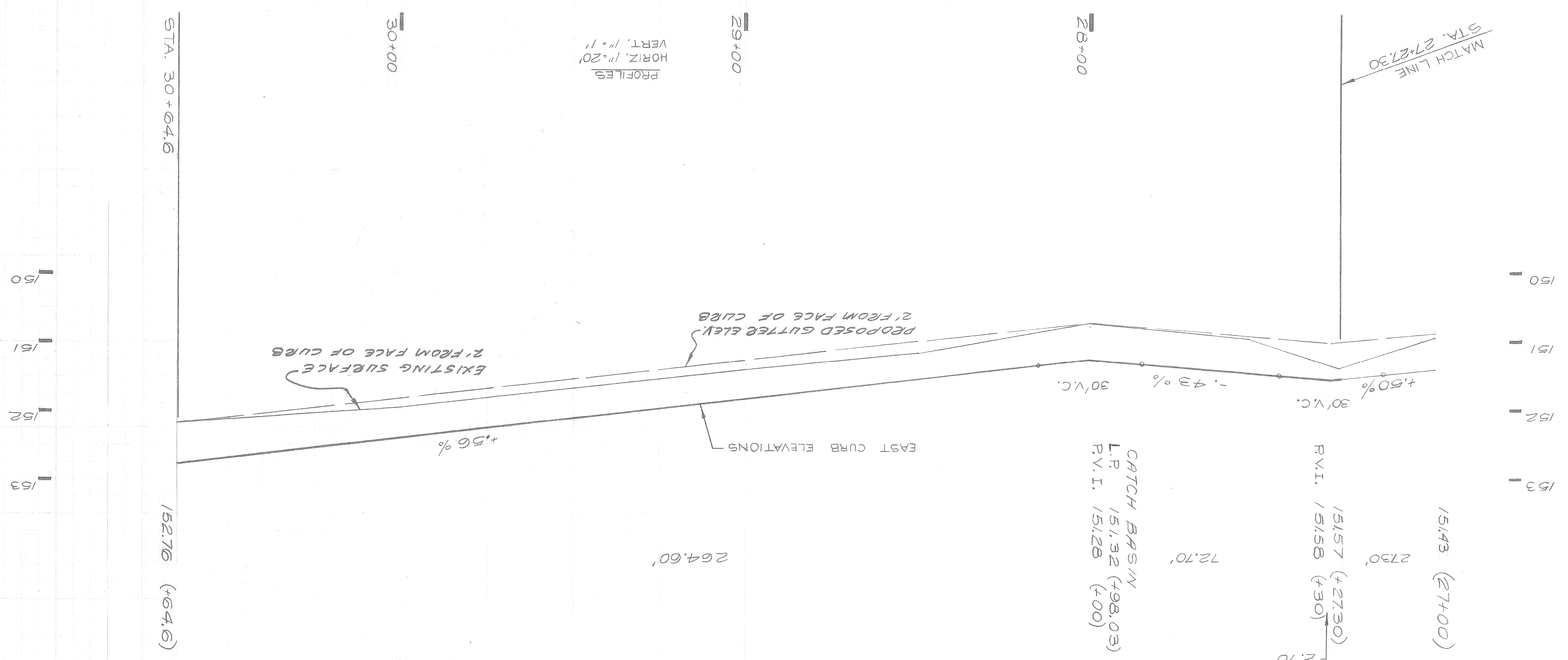
CITY OF DETROIT
FOR
COMMUNITY AND ECONOMIC DEVELOPMENT DEPARTMENT

CITY ENGINEERING DEPARTMENT

PAVING OF BEAUBIEN - ST. ANTOINE BLVD.
CANFIELD TO WARREN

MEDICAL CENTER REHABILITATION PROJECT NO. 3 MICH. R-112
WALK, CURB AND GUTTER CONSTRUCTION ON THE EAST SIDE
OF ST. ANTOINE FROM WARREN TO KIRBY

INDEX NO.	SHEET NO.	CONTRACT NO.	ASSIGNMENT NO.	DATE
6	27	PW 6510	AO 1976	7-14-75



NOTE - FOR SYMBOLS & ETC. SEE STANDARD DETAIL DRAWING NO. C-175

SCALE: HORIZONTAL 1"=20' VERTICAL 1"=20'

BOOK: 30 F (3) 1-52 DATE: 4-11-75 R

LEVEL: 152.76

CONTRACTOR: PAVING COMPANY

STRUCTURES WHETHER OR NOT INDICATED ON PLAN.

MUST CHECK WITH UTILITIES FOR LOCATIONS OF EXISTING

BEFORE STARTING CONSTRUCTION

CONTRACT NO. 153.57(R)

LINE: CHRYSLER SERVICE DRIVE

C.B.M. & F.E. COR. ST. ANTOINE & FREDERICK 154.91

C.B.M. & F.E. COR. ST. ANTOINE & KIRBY 155.65

R.B.M. & F.E. COR. ST. ANTOINE & BEAUBIEN 144.56(R)

R.B.M. & F.E. COR. ST. ANTOINE & KIRBY 155.65

MARKS: BENCH ELEV.

1. FOR CONSTRUCTION LEGEND SEE SHEET #27

2. FOR HORIZONTAL CONTROL SEE SHEET #27

REPOSED GUTTER PROFILE IS FOR ELEVATIONS AT POINT @ IN THE TYPICAL SECTION BELOW

PROF. CURB

HEATING & PLANING

9" UNIF. REINF.

2" WIDE CURB AND GUTTER

3/8" FT

4" STD. SIDEWALK

1/2" TOPSOIL + 1/2" 90D

SELECTED EXCAVATED MATERIAL

BAE TO BE LOCATED ABOVE OR BELOW HOOK BOLT

JOINT (L.) - DETAIL NO. 3

EXIST. PAVT. (ASPH. ON CONC.)

USE HEATING & PLANING TO FORM A SMOOTH SURFACE

SCALE 1"=30'

TYPICAL SECTION