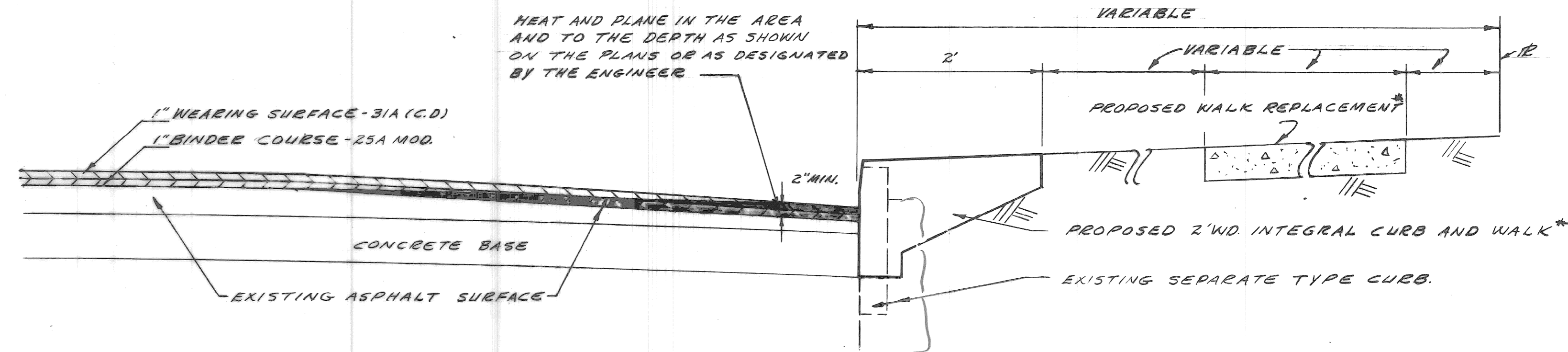
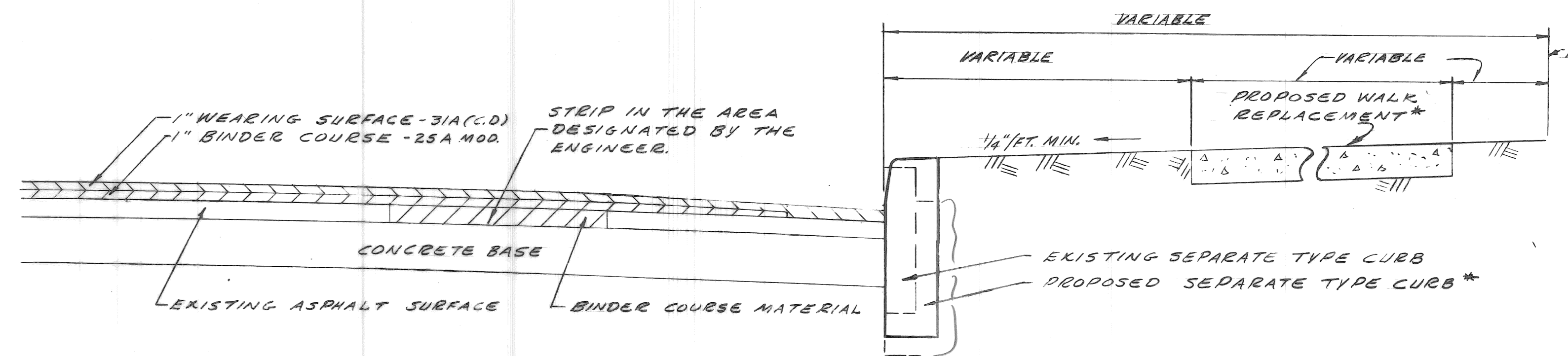


DESCRIPTION OF ITEM	UNIT	HANOVER QUANTITIES				TOTAL
		WEST GRAND BOULEVARD TO LESTER		LESTER TO LASALLE GARDENS		
		EAST SIDE	WEST SIDE	EAST SIDE	WEST SIDE	
SEPARATE TYPE CURB REPLACEMENT	L. FT.		12	48	5	65
SIDEWALK REPLACEMENT	4" S. FT.	625	425	2310	2340	6300
INTEGRAL CURB & SIDEWALK REPLACEMENT	2' W.D. L. FT.	420	390	891	949	2650
JOINT SAWING	L. FT.			60		60
DRIVEWAY REMOVAL	S. FT.	100				100
DRIVEWAY 6" STANDARD	S. FT.	100				100
SIDEWALK 4" STANDARD	S. FT.	47		47	6	100
STUMP REMOVAL	EACH			1	2	3
COLD PATCH	S. YDS.					
MAINTAINING TRAFFIC	LUMP SUM					
CLEAN & CONDITION EXISTING SURFACE	S. YDS.					
STEPPING	S. YDS.					
REMOVE EXISTING CONCRETE BASE	S. YDS.					
REPLACEMENT OF CONC. BASE WITH GRADE A CONCRETE	S. YDS.					
RESETTNG CATCH BASINS ALL TYPES	EACH					
RESETTNG MANHOLES	EACH					
RESETTNG STOP BOXES	EACH					
REBUILDING CATCH BASINS	EACH					
SEMI-REBUILDING CATCH BASIN	EACH					
HEATING AND PLANING	L. FT.					
SHEET ASPHALT WEARING SURFACE IN PLACE	TONS					
BERM GRADING	S. YDS.			91	89	180
RESURFACING MIXTURE IN PLACE (ALL NATURAL AGGREGATES)						
FINE BINDER COURSE MIXTURE	TONS					
WEARING SURFACE MIXTURE - 31A (C.D)	TONS					
RESURFACING MIXTURE IN PLACE (ALL SLAG AGGREGATES)						
FINE BINDER COURSE MIXTURE	TONS					
WEARING SURFACE MIXTURE - 31A (C.D)	TONS					



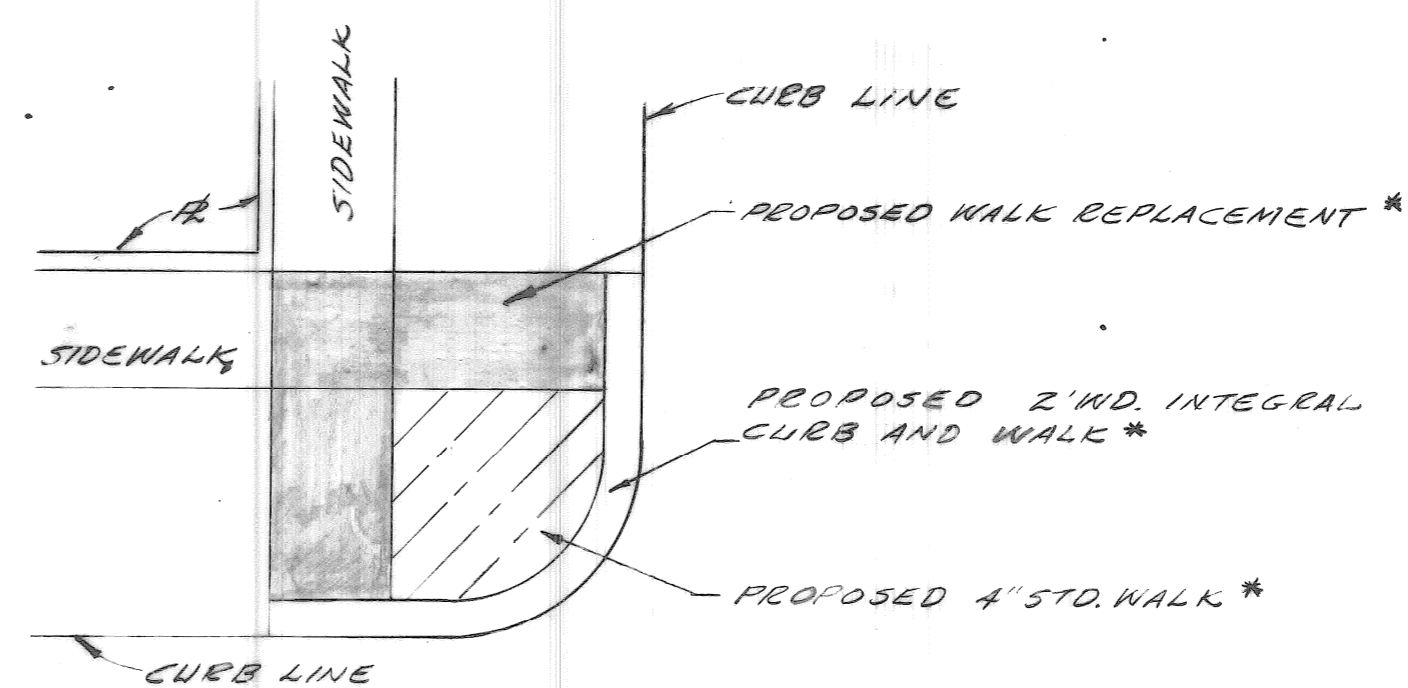
TYPICAL RESURFACING SECTIONS APPLY TO THE FOLLOWING CONTRACTS ONLY - PW 6501, PW 6502, PW 6505, PW 6506



TYPICAL RESURFACING, CURB AND WALK SECTIONS

NO SCALE

\*SEE NOTE #1



TYPICAL INTERSECTION

NO SCALE

LEGEND

- STUMP REMOVAL
- RESETTNG CATCH BASIN
- RESETTNG MANHOLE

NOTES

- 1- LOCATION OF PROPOSED NEW CONSTRUCTION OR REPLACEMENT INDICATED ON THE TYPICAL SECTIONS SHALL BE AS CALLED FOR ON THE PLANS OR AS DIRECTED BY THE ENGINEER.
- 2- WHERE SEPARATE TYPE CURB OR INTEGRAL TYPE CURB AND WALK ARE CALLED FOR, SEE STD. DET. DWGS. NO. C-4381 AND NO. C-4550.
- 3- CONSTRUCT INTEGRAL CURB AND SIDEWALK IN THIS CONTRACT EXCEPT AT TREE LOCATIONS - SEE DETAIL SHEET #3

DESIGNED BY	TALLEY	APPROVED:	<i>J. Erickson</i>
DRAWN BY	TALLEY	ENGINEER OF STREETS	
TRACED BY		ENGINEER OF EXPRESSWAYS	<i>Allen P. Poyner</i>
CHECKED BY	W.L.T. N.J.K.	CITY ENGINEER	

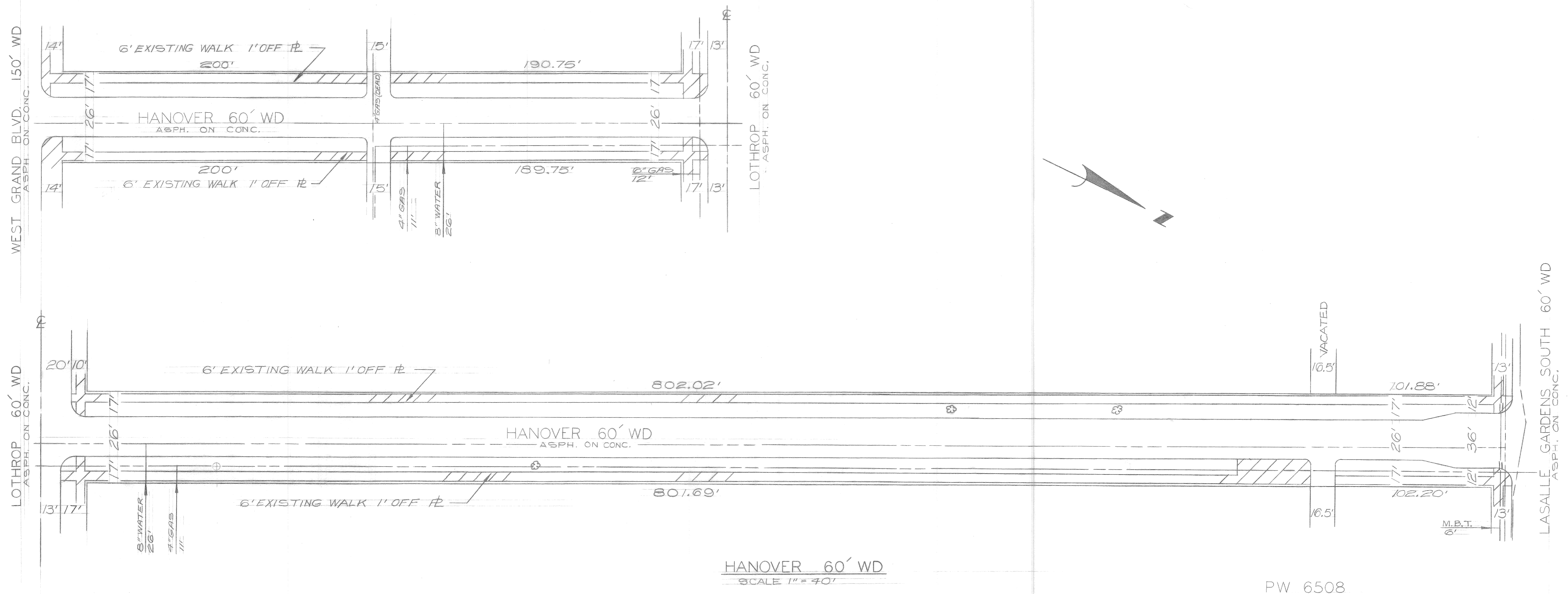
CITY OF DETROIT  
DEPARTMENT OF PUBLIC WORKS  
CITY ENGINEERS OFFICE  
FOR  
DETROIT HOUSING COMMISSION

CURB AND WALK REPLACEMENT ON HANOVER  
FROM WEST GRAND BOULEVARD TO LASALLE GARDENS SOUTH  
VIRGINIA PARK REHABILITATION PROJECT MICH. R-149

DETAILS, QUANTITIES AND LEGEND

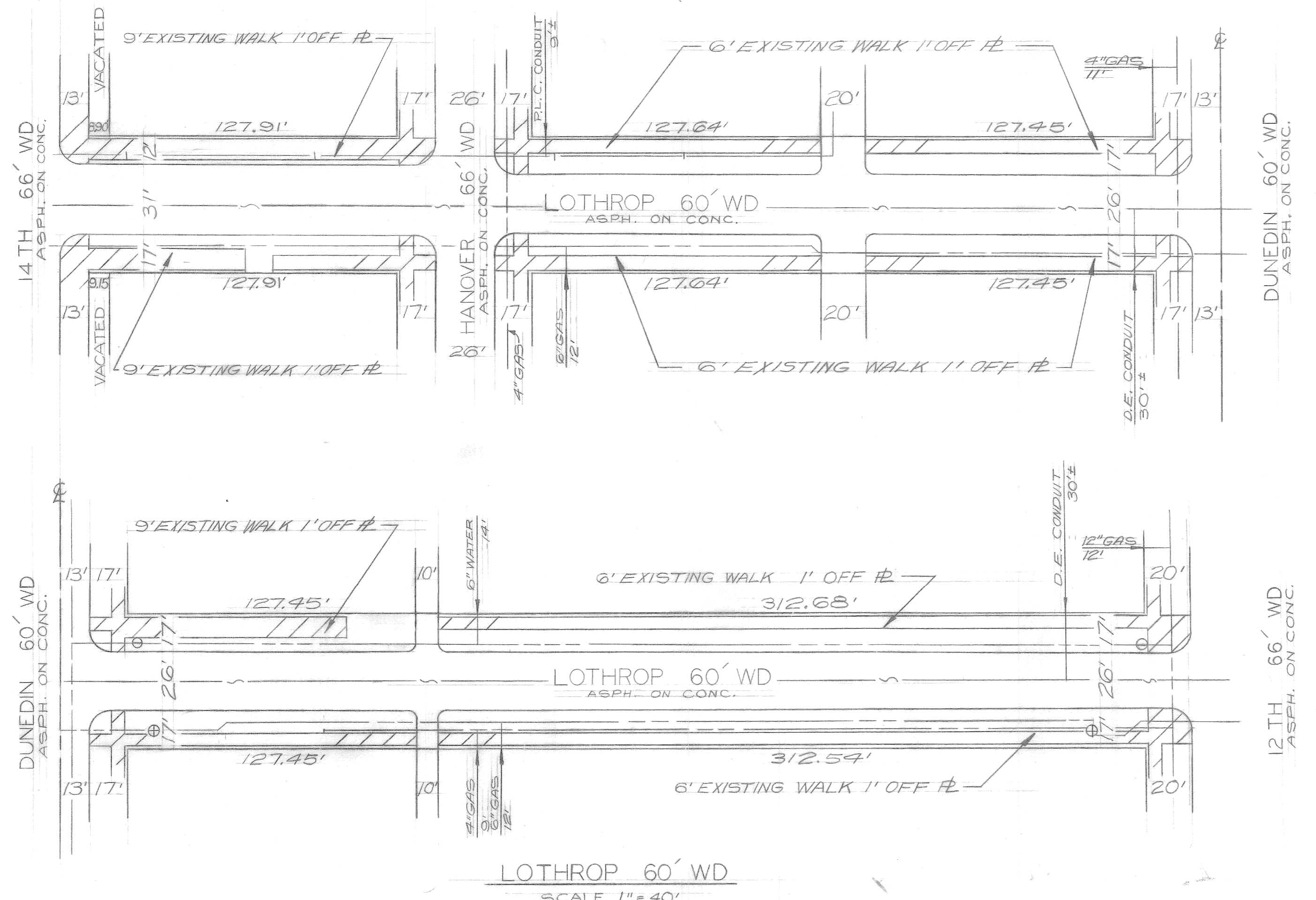
SHEET 2 OF 3 SHEETS
CONTRACT NO. PW 6508
ASSIGN. NO. AO. 2049
DATE 12-6-71





HANOVER 60' WD  
SCALE 1" = 40'

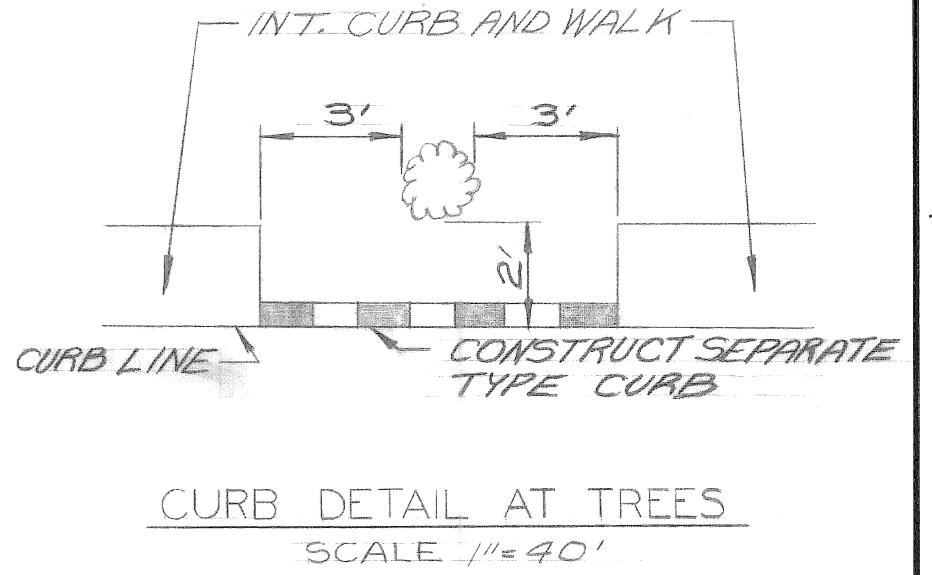
PW 6508



LOTHROP 60' WD  
SCALE 1" = 40'

PW 6509

- NOTES:
- BEFORE STARTING CONSTRUCTION-CONTRACTOR MUST CHECK WITH UTILITIES FOR LOCATIONS OF EXISTING STRUCTURES WHETHER OR NOT INDICATED ON PLANS
  - FOR DETAILED QUANTITIES, LEGEND AND CROSS-SECTIONS SEE SHEET #2
  - REPLACE ALL CURBS IN BOTH CONTRACTS ON THIS SHEET
  - THE REPLACEMENT OF WALKS AND DRIVES SHALL BE AT SUCH LOCATIONS AS DESIGNATED BY THE ENGINEER
  - CONSTRUCT INTEGRAL CURB AND SIDEWALK IN THIS CONTRACT EXCEPT AT TREE LOCATIONS - SEE DETAIL THIS SHEET
  - BACKFILLING OF THE BERM AREA WITH SELECTED EXCAVATED MATERIAL OR TOPSOIL SHALL BE INCIDENTAL TO THE COST OF BERM GRADING



446399

SCALE 1" = 40'

NOT IN THIS CONTRACT

DESIGNED BY	APPROVED:
DRAWN BY	ENGINEER OF STREETS
TRACED BY	ENGINEER OF EXPRESSWAYS
CHECKED BY	CITY ENGINEER

**CITY OF DETROIT**  
DEPARTMENT OF PUBLIC WORKS  
CITY ENGINEERS OFFICE  
FOR  
DETROIT HOUSING COMMISSION

CURB AND WALK REPLACEMENT ON HANOVER FROM WEST GRAND BLVD. TO LASALLE GARDENS SOUTH AND ON LOTHROP FROM FOURTEENTH TO TWELFTH VIRGINIA PARK REHABILITATION PROJECT MICH. R-149

SHEET 3 OF 3 SHEETS
CONTRACT PW 6508 No.
ASSIGN. NO. AO 2049
DATE 12-6-71

REVISIONS LOCATED BY COORDINATES ON SHEET