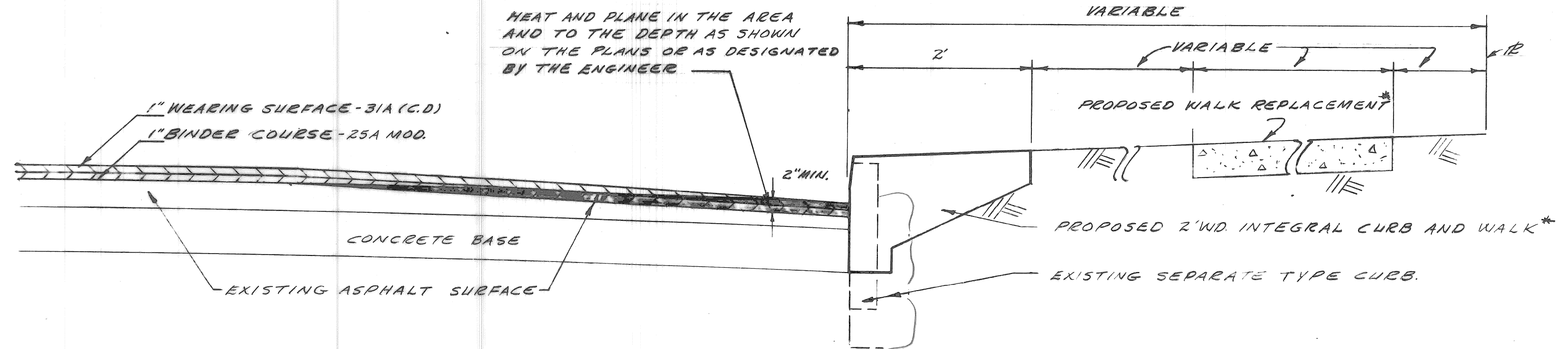
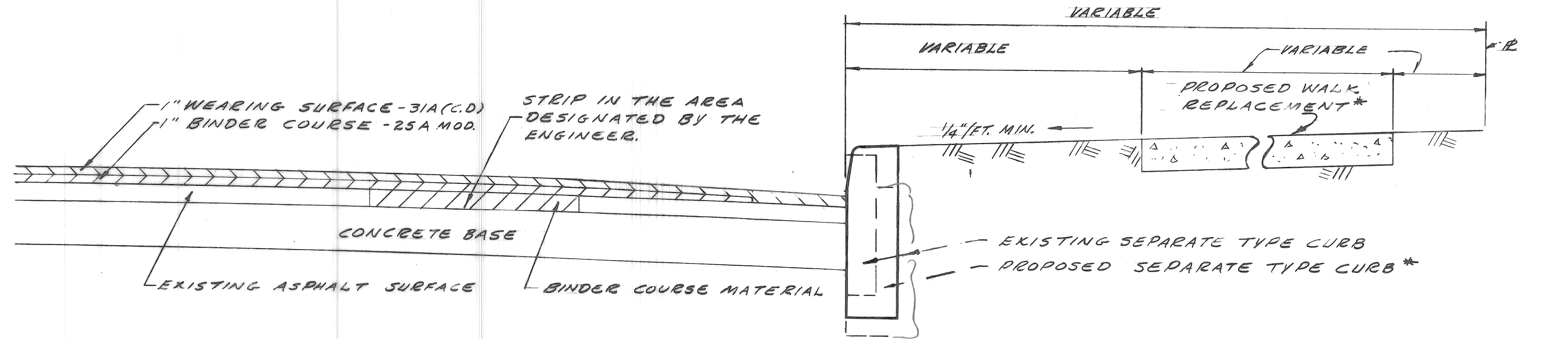


DESCRIPTION OF ITEM	UNIT	PINGREE QUANTITIES								TOTAL
		TWELFTH TO WOODROW WILSON		WOODROW WILSON TO BYRON		BYRON TO SERVICE DRIVE		NORTH SIDE	SOUTH SIDE	
		NORTH SIDE	SOUTH SIDE	NORTH SIDE	SOUTH SIDE	NORTH SIDE	SOUTH SIDE			
SEPARATE TYPE CURB REPLACEMENT	L. FT.	661	681	760	696	635	667			4100
SIDEWALK REPLACEMENT	4" S. FT.	1984	1438	1454	3120	2920	584			11,500
	6" S. FT.					276	174			450
INTEGRAL CURB & SIDEWALK REPLACEMENT	2 FT WID L. FT.	26	25	30	168	26	25			350
JOINT SAWING	L. FT.									
DEWEWAY REMOVAL	S. FT.					135				135
DEWEWAY 6" STANDARD	S. FT.					135				135
SIDEWALK 4" STANDARD	S. FT.				66		34			100
STUMP REMOVAL	EACH			1						1
COLD PATCH	S. YDS.									
MAINTAINING TRAFFIC	LUMP SUM									
CLEAN & CONDITION EXISTING SURFACE	S. YDS.									
STEPPING	S. YDS.									
REMOVE EXISTING CONCRETE BASE	S. YDS.									
REPLACEMENT OF CONC. BASE WITH GRADE A CONCRETE	S. YDS.									
RESETTNG CATCH BASINS ALL TYPES	EACH									
RESETTNG MANHOLES	EACH									
RESETTNG STOP BOXES	EACH									
REBUILDING CATCH BASINS	EACH									
SEMI-REBUILDING CATCH BASIN	EACH									
HEATING AND PLANING	L. FT.									
SHEET ASPHALT WEARING SURFACE IN PLACE	TONS									
BERM GRADING	S. YDS.			250	50					300
RESURFACING MIXTURE IN PLACE (ALL NATURAL AGGREGATES)										
FINE BINDER COURSE MIXTURE	TONS									
WEARING SURFACE MIXTURE - 31A (C.D.)	TONS									
RESURFACING MIXTURE IN PLACE (ALL SLAG AGGREGATES)										
FINE BINDER COURSE MIXTURE	TONS									
WEARING SURFACE MIXTURE - 31A (C.D.)	TONS									

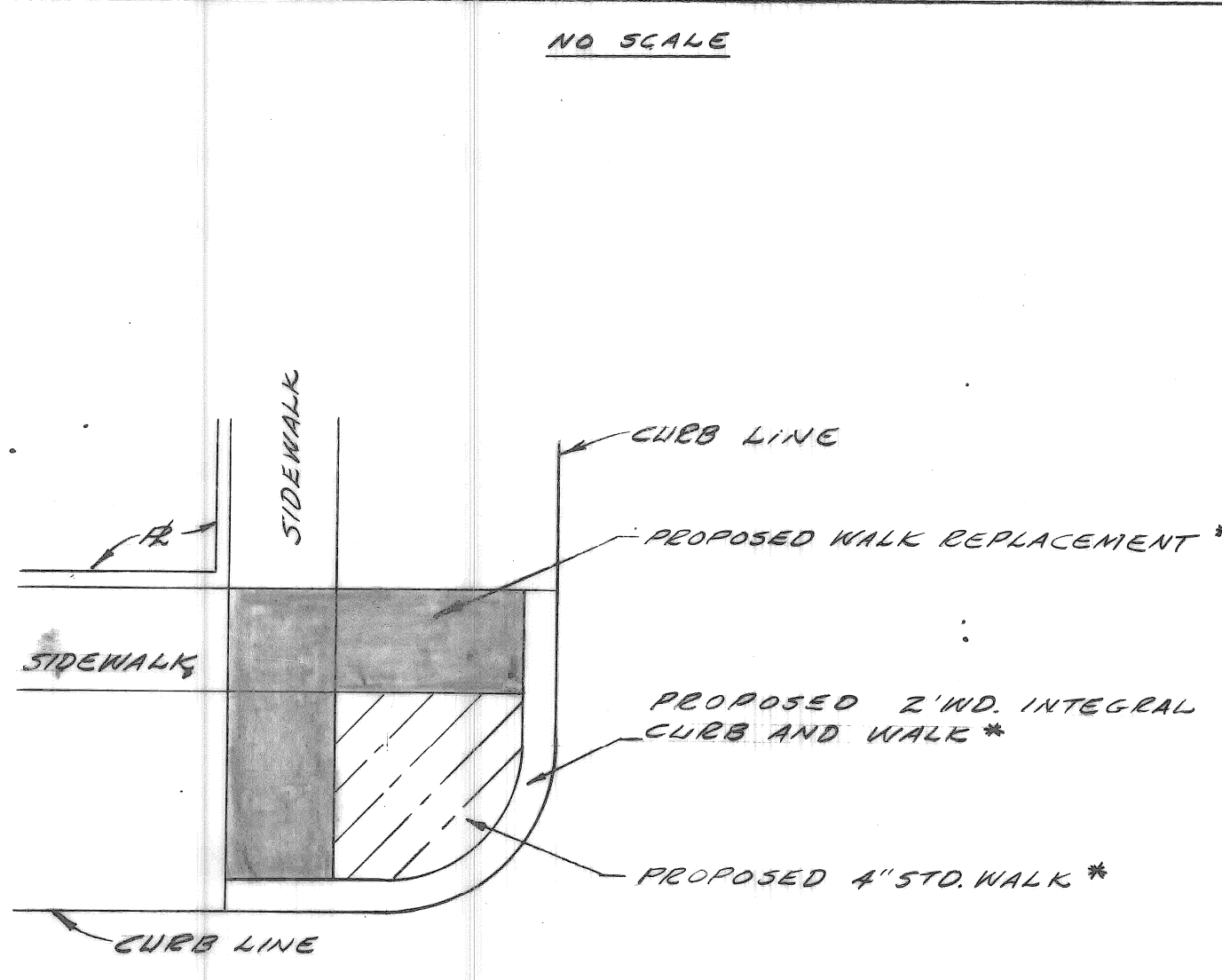


TYPICAL RESURFACING SECTIONS APPLY TO THE FOLLOWING CONTRACTS ONLY - PW 6501, PW 6502, PW 6503, PW 6506



TYPICAL RESURFACING, CURB AND WALK SECTIONS

SEE NOTE #1



TYPICAL INTERSECTION

LEGEND

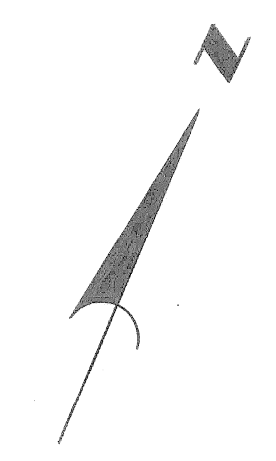
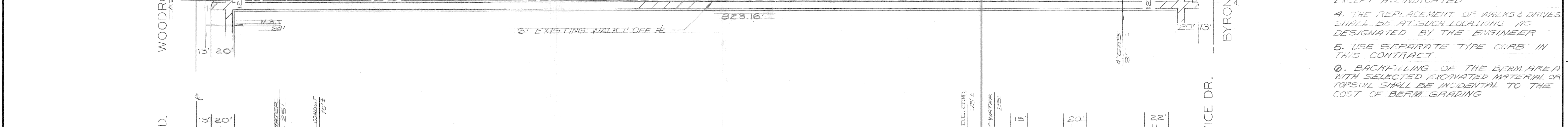
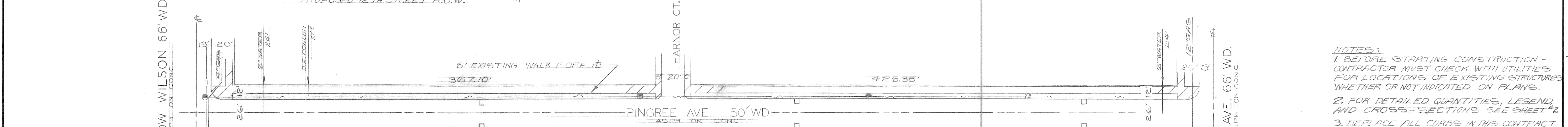
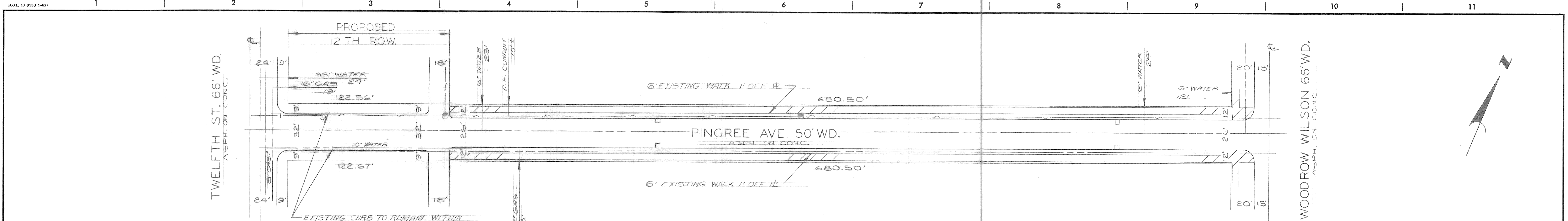
- ⊙ STUMP REMOVAL
- ⊙ RESETTNG CATCH BASIN
- ⊙ RESETTNG MANHOLE

NOTES

- 1- LOCATION OF PROPOSED NEW CONSTRUCTION OR REPLACEMENT INDICATED ON THE TYPICAL SECTIONS SHALL BE AS CALLED FOR ON THE PLANS OR AS DIRECTED BY THE ENGINEER.
- 2- WHERE SEPARATE TYPE CURB OR INTEGRAL TYPE CURB AND WALK ARE CALLED FOR, SEE STD. DET. DWGS. NO. C-4381 AND NO. C-4550.
- 3- USE SEPARATE TYPE CURB IN THIS CONTRACT
- 4- WHERE SIDEWALK REPLACEMENT IN DEWEWAY AREA IS DIRECTED BY THE ENGINEER CONSTRUCT 6" SIDEWALK

A.C.C. 8/1/72

DESIGNED BY TALLEY	APPROVED <i>J. Erickson</i> ENGINEER OF STREETS	CITY OF DETROIT DEPARTMENT OF PUBLIC WORKS CITY ENGINEERS OFFICE FOR DETROIT HOUSING COMMISSION	CURB AND WALK REPLACEMENT ON PINGREE FROM TWELFTH TO JOHN C. LODGE WEST SERVICE DRIVE VIRGINIA PARK REHABILITATION PROJECT MICH. R-149	SHEET <u>2</u> OF <u>3</u> SHEETS
DRAWN BY TALLEY	APPROVED <i>Allen Shapiro</i> ENGINEER OF EXPRESSWAYS			CONTRACT No. PW 6507
TRACED BY	CHECKED BY W.L.T. N.J.K.			ASSIGN. NO. AO. 2049
COORDS	DESCRIPTION			DATE 12-6-71



- NOTES:**
1. BEFORE STARTING CONSTRUCTION - CONTRACTOR MUST CHECK WITH UTILITIES FOR LOCATIONS OF EXISTING STRUCTURES WHETHER OR NOT INDICATED ON PLANS.
 2. FOR DETAILED QUANTITIES, LEGEND AND CROSS-SECTIONS SEE SHEET #2.
 3. REPLACE ALL CURBS IN THIS CONTRACT EXCEPT AS INDICATED.
 4. THE REPLACEMENT OF WALKS & DRIVES SHALL BE AT SUCH LOCATIONS AS DESIGNATED BY THE ENGINEER.
 5. USE SEPARATE TYPE CURB IN THIS CONTRACT.
 6. BACKFILLING OF THE BERM AREA WITH SELECTED EXCAVATED MATERIAL OR TOPSOIL SHALL BE INCIDENTAL TO THE COST OF BERM GRADING.

A.C.C. 8/1/72

446893

SCALE: 1"=40'

DESIGNED BY	APPROVED:
DRAWN BY	<i>J. Erickson</i>
TRACED BY	ENGINEER OF STREETS
CHECKED BY	<i>Allen E. Pagan</i>
	ENGINEER OF EXPRESSWAYS
	CITY ENGINEER

CITY OF DETROIT
 DEPARTMENT OF PUBLIC WORKS
 CITY ENGINEERS OFFICE
 FOR
 DETROIT HOUSING COMMISSION

CURB AND WALK REPLACEMENT ON PINGREE
 FROM TWELFTH TO JOHN C. LODGE WEST SERVICE DRIVE
 VIRGINIA PARK REHABILITATION PROJECT MICH. R-149

SHEET	3 OF 3 SHEETS
CONTRACT No.	PW 6507
ASSIGN. No.	AO 2049
DATE	12-6-71

PLAN