

DESCRIPTION OF ITEM	UNIT	FOUR SECTIONS				TWO SECTIONS				TOTAL
		NORTH SIDE	SOUTH SIDE	NORTH SIDE	SOUTH SIDE	NORTH SIDE	SOUTH SIDE	NORTH SIDE	SOUTH SIDE	
SEPARATE TYPE CURB REPLACEMENT	L. FT.		6	36	25	25	30	43		190
SIDEWALK REPLACEMENT	S. FT.	2094	2160	954	804	3188	2172	1386	1873	14,600
REPLACEMENT	S. FT.	120	128		36	120	36	60		800
INTEGRAL CURB & SIDEWALK REPLACEMENT	L. FT.	827	821	705	860	826	731	727		6,200
JOINT SAWING	L. FT.				75					75
DEWEAY REMOVAL	S. FT.	200	200		100	50				550
DEWEAY 6" STANDARD	S. FT.	200	200		100	50				550
SIDEWALK 4" STANDARD	S. FT.	91	91	91	24	3				300
STUMP REMOVAL	EACH			1		3	1			7
COLD PATCH	S. YDS									
MAINTAINING TRAFFIC	S. YDS									
CLEAN & CONDITION EXISTING SURFACE	S. YDS									7200
STRIPPING	S. YDS									25
REMOVE EXISTING CONCRETE BASE	S. YDS									100
REPLACEMENT OF CONC. BASE WITH GRADE A CONCRETE	S. YDS									100
RESETTING CATCH BASINS ALL TYPES	EACH									20
RESETTING MANHOLES	EACH									5
RESETTING STOP BOXES	EACH									1
REBUILDING CATCH BASINS	EACH									1
SEMI-REBUILDING CATCH BASIN	EACH									1
HEATING AND PLANING	S. YDS									4500
BITUMINOUS BOND COAT IN PLACE	GAL.									1761
SHEET ASPHALT WEARING SURFACE MIXTURE IN PLACE	TONS									10
BERM GRADING	S. YDS									490
RESURFACING MIXTURE IN PLACE (ALL NATURAL AGGREGATES)	TONS									650
WEARING SURFACE MIXTURE - 31A(C,D)	TONS									646
RESURFACING MIXTURE IN PLACE (ALL AGGREGATES)	TONS									596
WEARING SURFACE MIXTURE - 31A(C,D)	TONS									609

CITY OF DETROIT  
 DEPARTMENT OF PUBLIC WORKS  
 CITY ENGINEERS OFFICE  
 FOR  
 DETROIT HOUSING COMMISSION

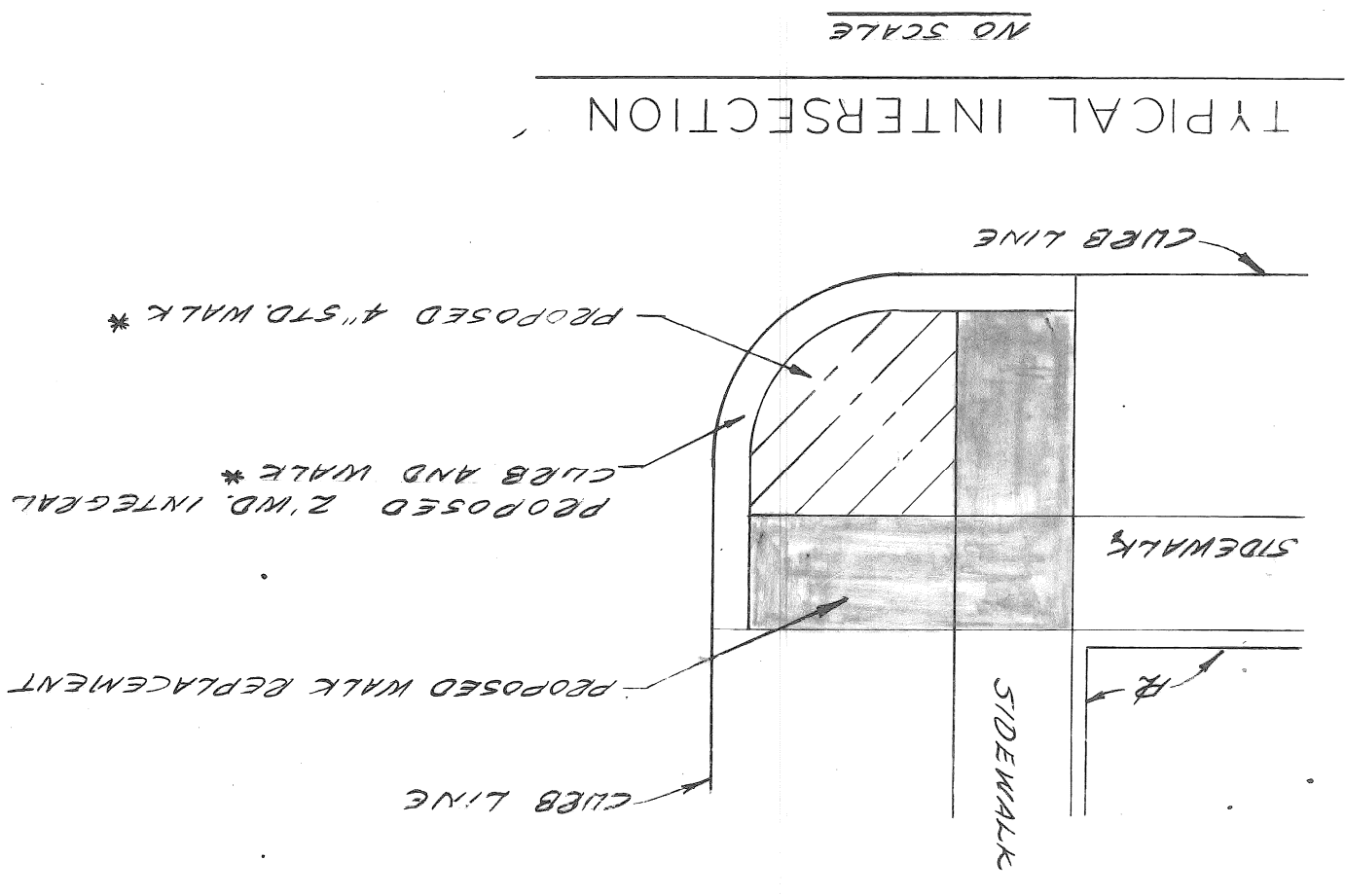
APPROVED: *[Signature]*  
 ENGINEER OF STREETS  
 ENGINEER OF EXPRESSWAYS  
 CITY ENGINEER

DESIGNED BY: TALLEY  
 DRAWN BY: TALLEY  
 CHECKED BY: W.L.T. N.J.K.

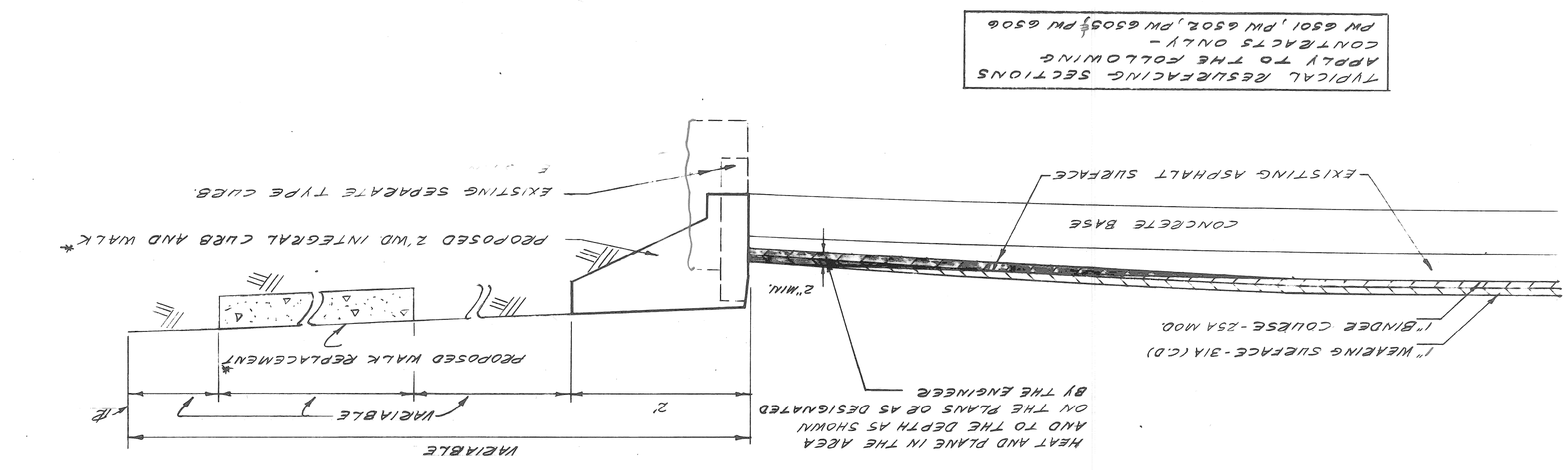
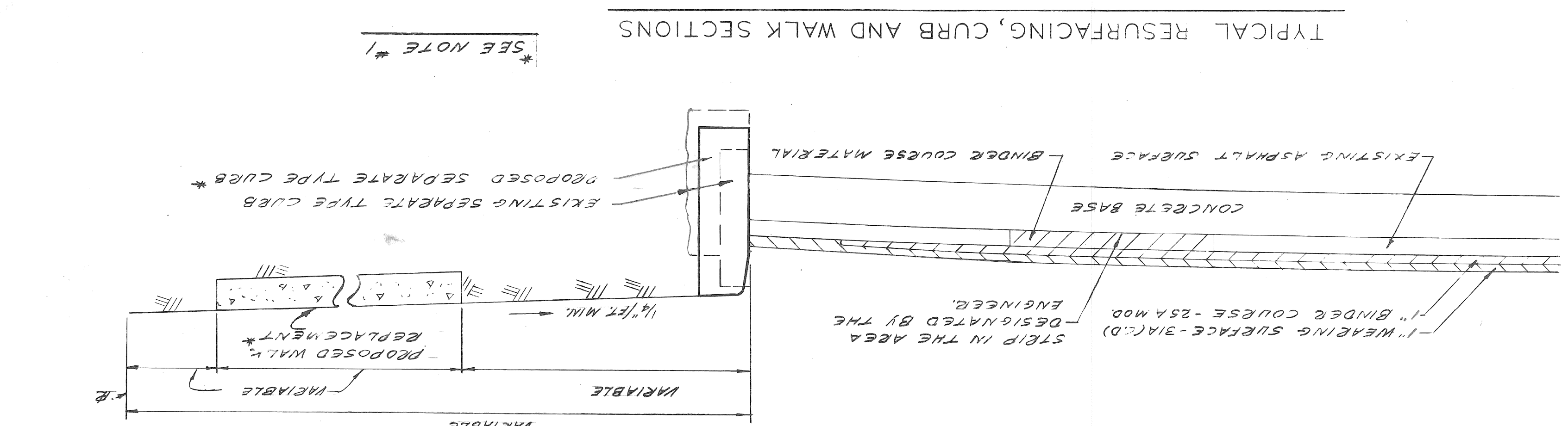
REVISIONS LOCATED BY COORDINATES ON SHEET

SHEET 2 OF 3 SHEETS  
 CONTRACT NO. PW 6502  
 ASSIGN. NO. AO 2049  
 DATE 12-6-71

1- LOCATION OF PROPOSED NEW CONSTRUCTION OR REPLACEMENT INDICATED ON THE TYPICAL PLANS OR AS DIRECTED BY THE ENGINEER.  
 2- WHERE SEPARATE TYPE CURB OR INTEGRAL TYPE CURB AND WALK ARE CALLED FOR, SEE STD. DET. DEMOS. NO. C-4381 AND NO. C-4550.  
 3- CONSTRUCT INTEGRAL CURB AND SIDEWALK IN THIS CONTACT EXCEPT AT THESE LOCATIONS SEE DETAIL SHEET #3.  
 4- WHERE SIDEWALK REPLACEMENT IN DRIVEWAY AREA IS DIRECTED BY THE ENGINEER, CONSTRUCT 6" SIDEWALK.



**LEGEND**  
 ○ STUMP REMOVAL  
 ○ RESETTING CATCH BASIN  
 ○ RESETTING MANHOLE  
 ○ HEATING AND PLANING



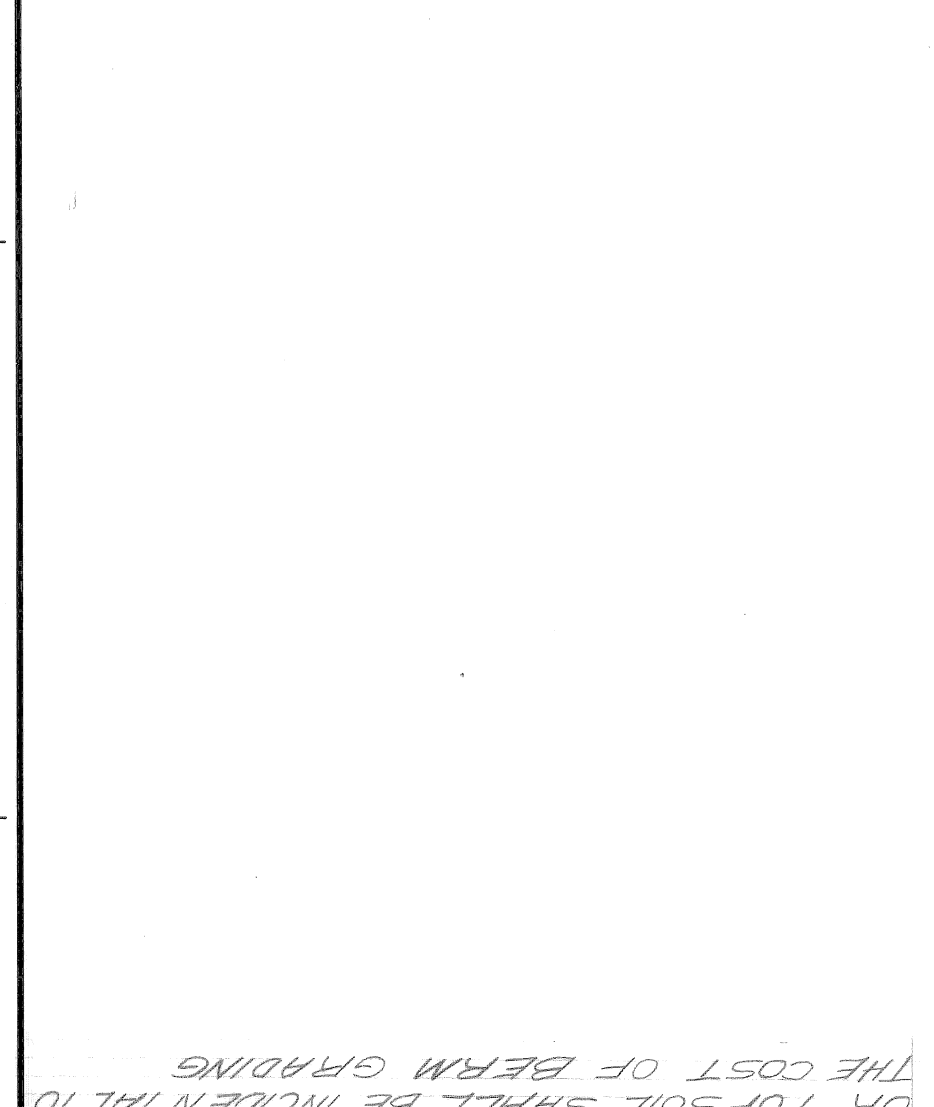
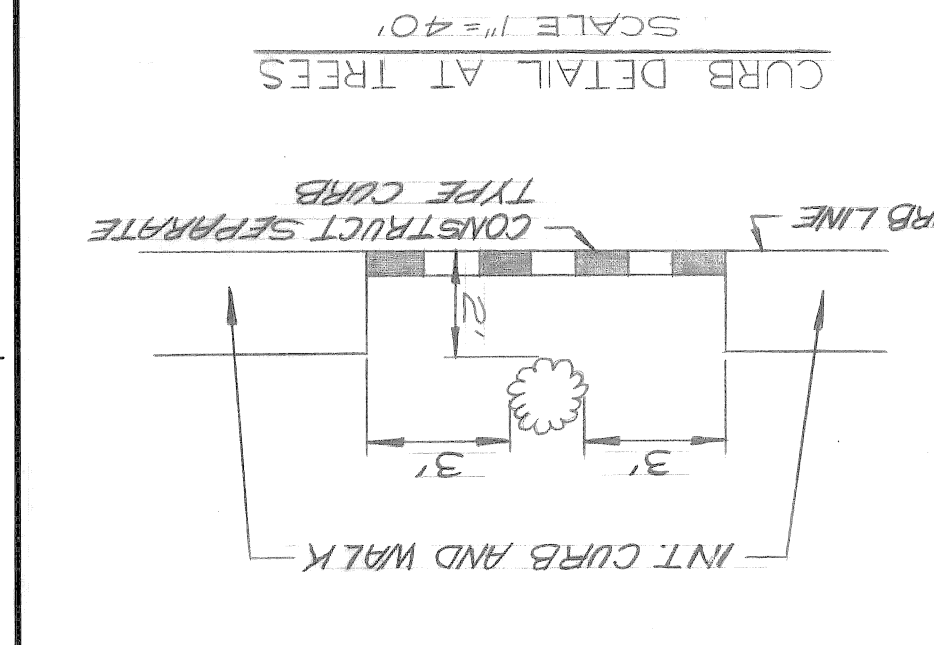
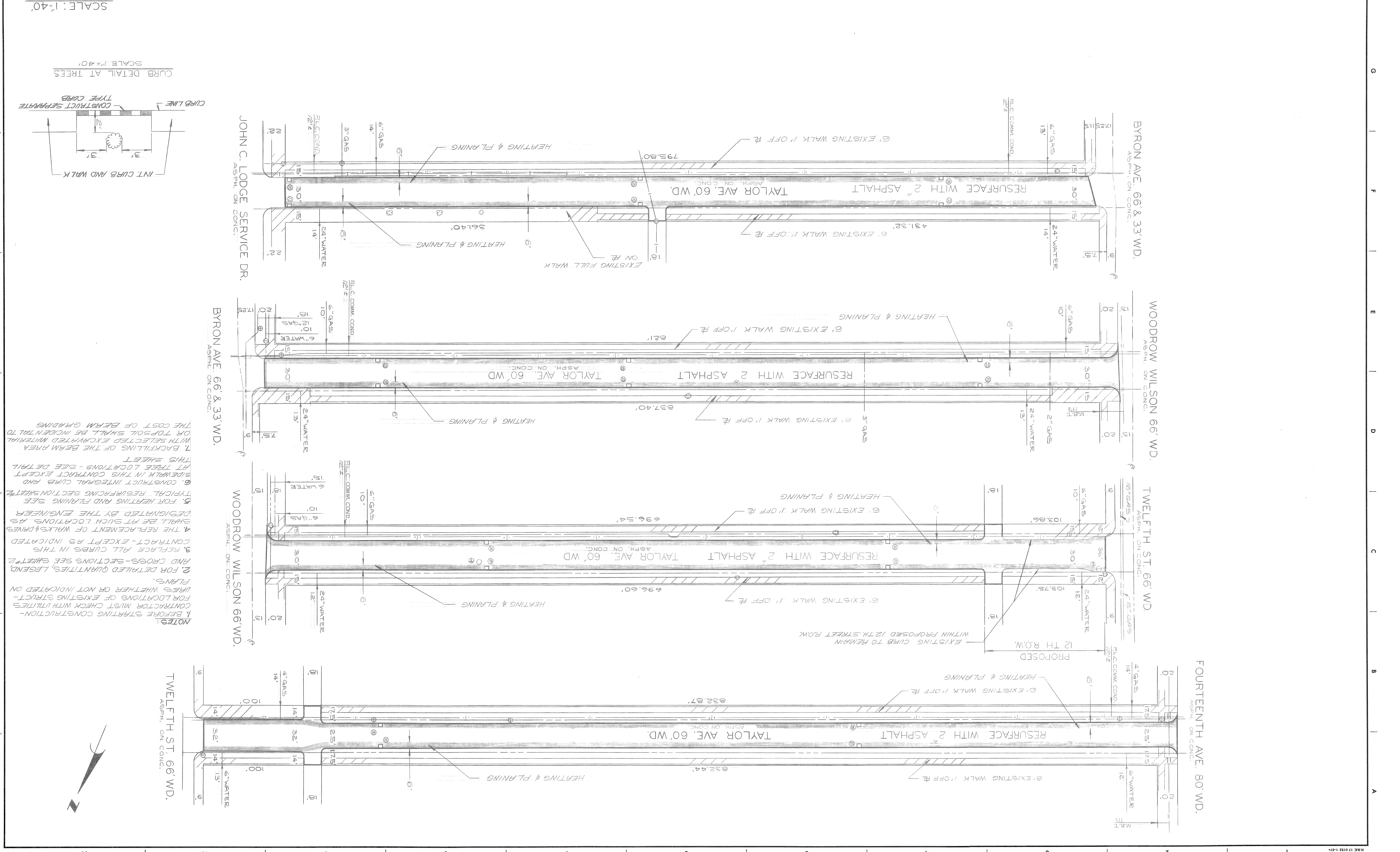
TYPICAL RESURFACING SECTIONS APPLY TO THE FOLLOWING CONTRACTS ONLY -  
 PW 6501, PW 6502, PW 6503, PW 6506

REVISIONS LOCATED BY COORDINATES ON SHEET	NO.	DATE	DESCRIPTION

APPROVED: <i>[Signature]</i>	ENGINEER OF STREETS	DESIGNED BY: J. CLARK	CHECKED BY: W.L.T. N.K.K.
CITY ENGINEER	ENGINEER OF EXPRESSWAYS	DRAWN BY:	TRACED BY:

**CITY OF DETROIT**  
DEPARTMENT OF PUBLIC WORKS  
CITY ENGINEERS OFFICE  
FOR  
DETROIT HOUSING COMMISSION

DATE: 12-6-71	PLAN
CONTRACT NO. PW 6502	CURB AND WALK REPLACEMENT AND RESURFACING ON TAYLOR FROM FOURTEENTH TO JOHN C. LODGE WEST SERVICE DRIVE VIRGINIA PARK REHABILITATION PROJECT MICH. R-149
SHEET 3 OF 3 SHEETS	



**NOTE 9:** BEFORE STARTING CONSTRUCTION CONTRACTOR MUST CHECK WITH UTILITIES FOR LOCATIONS OF EXISTING STRUCTURES WHETHER OR NOT INDICATED ON PLANS.  
**2.** FOR DETAILED QUANTITIES, LEGEND, AND CROSS-SECTIONS SEE SHEETS #2 & 3. REPLACE ALL CURBS IN THIS CONTRACT - EXCEPT AS INDICATED.  
**4.** THE REPLACEMENT OF WALKS & DRIVES SHALL BE AT SUCH LOCATIONS AS DESIGNATED BY THE ENGINEER.  
**5.** FOR HEATING AND PLANNING SEE TYPICAL RESURFACING SECTION SHEET #2.  
**6.** CONSTRUCT INTEGRAL CURB AND SIDEWALK IN THIS CONTRACT EXCEPT AT TREE LOCATIONS - SEE DETAIL THIS SHEET.  
**7.** BACKFILLING OF THE BERM AREA WITH SELECTED EXCAVATED MATERIAL OR TOPSOIL SHALL BE INCIDENTAL TO THE COST OF BERM GRADING.