

CITY OF DETROIT
 DEPARTMENT OF PUBLIC WORKS
 CITY ENGINEERS OFFICE

PLANS FOR PROPOSED

PAVEMENT REMOVAL AND MISCELLANEOUS CONSTRUCTION

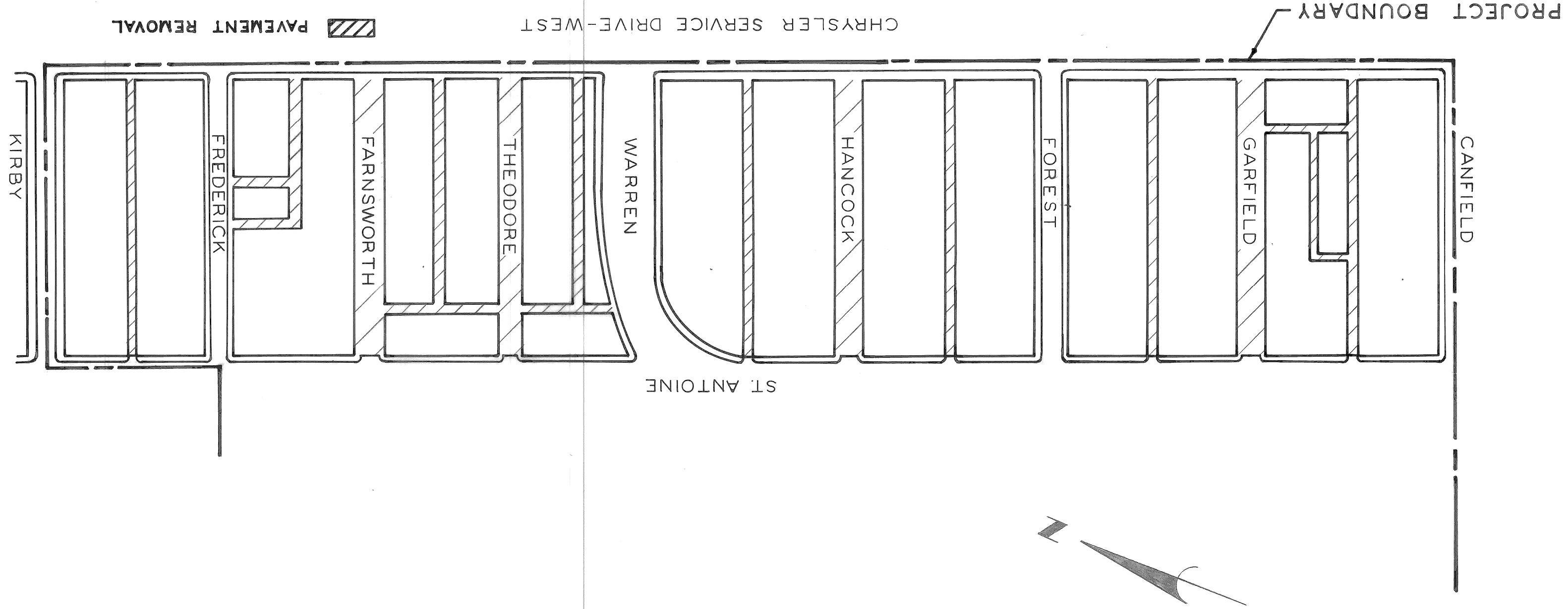
MEDICAL CENTER

REHABILITATION PROJECT NO. 3 MICH. R-112

BOUNDED BY: CANFIELD, ST. ANTOINE, KIRBY AND CHRYSLER W. SERVICE DRIVE

FOR

DETROIT HOUSING COMMISSION



1 TITLE SHEET

2-3 REMOVAL AND MISCELLANEOUS CONSTRUCTION SHEET

4 REMOVAL AND MISCELLANEOUS CONSTRUCTION,

DETAILS AND QUANTITIES

AO 1975

PROJECT: PAVEMENT REMOVAL AND MISCELLANEOUS CONSTRUCTION
 MEDICAL CENTER REHABILITATION PROJECT NO. 3 MICH. R-112
 CONTRACT NO. PW 5799

PLANS PREPARED BY
 DEPARTMENT OF PUBLIC WORKS
 CITY ENGINEERS OFFICE

RECOMMENDED FOR APPROVAL

ENGINEER OF INSPECTION

DATE

6-11-71

RECOMMENDED FOR APPROVAL

HEAD ENGINEER

DATE

6-17-71

APPROVED

ASSISTANT CITY ENGINEER

DATE

6-17-71

APPROVED

CITY ENGINEER

DATE

6-17-71

DRWG. NO. 1 OF 4

DATE JUNE 9 1971

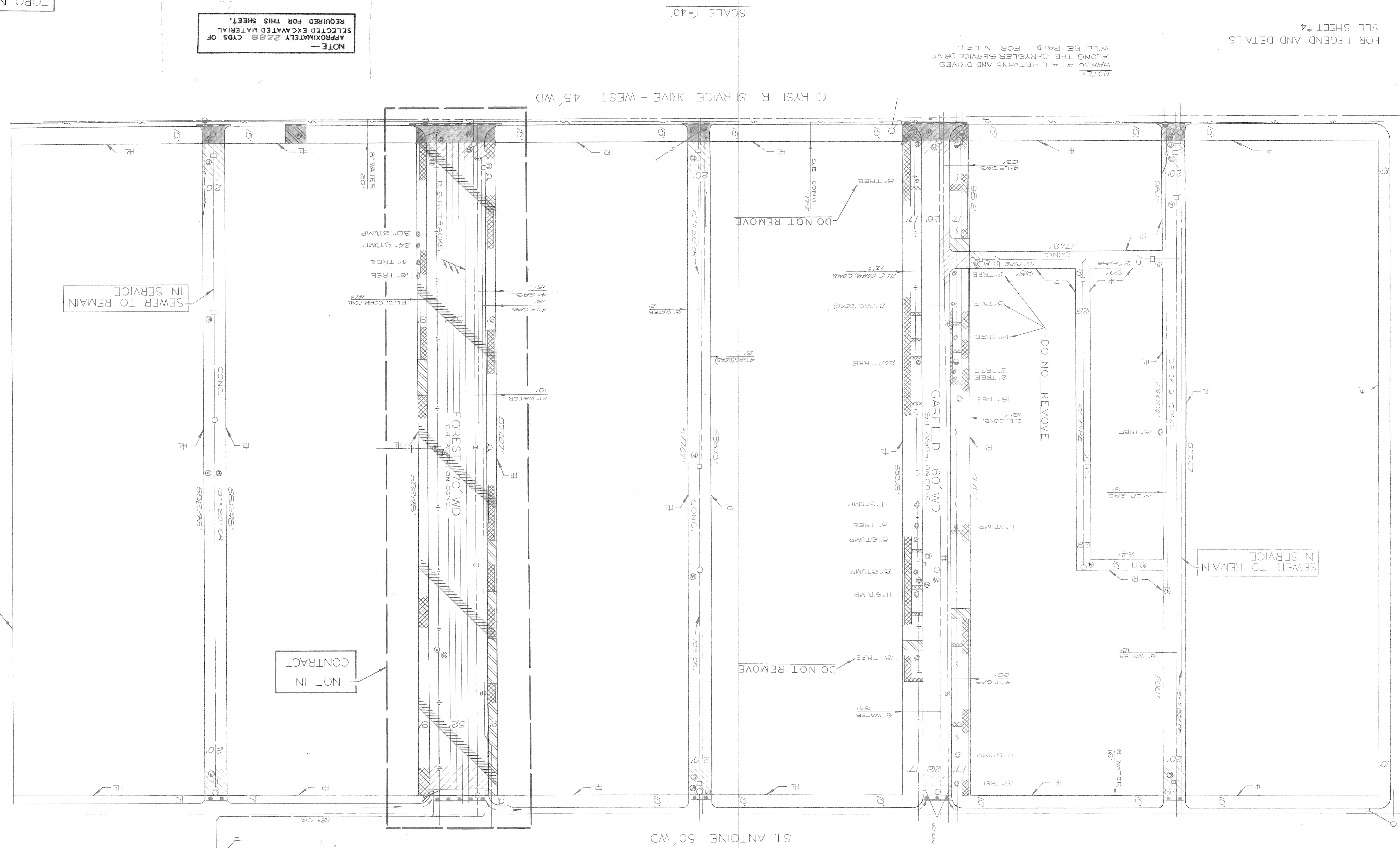
REVISIONS LOCATED BY COORDINATES ON SHEET	3	4	5	6	7	8	9	10	11
COORD. DESCRIPTION									
DATE	9/9/71								
DESIGNED BY	APPROVED: <i>W. J. ...</i>	DESIGNED BY: <i>B. C. ...</i>	TRACED BY: <i>TALLEY</i>	CHECKED BY: <i>M. Kawana</i>	CITY OF DETROIT DEPARTMENT OF PUBLIC WORKS CITY ENGINEERS OFFICE FOR DETROIT HOUSING COMMISSION				
DRAWN BY					PAVEMENT REMOVAL AND MISCELLANEOUS CONSTRUCTION MEDICAL CENTER REHABILITATION PROJECT NO. 3 MICH. R-112				
REVISIONS					REMOVAL AND MISCELLANEOUS CONSTRUCTION SHEET				
DATE					DATE: JUNE 9, 1971				
NO.					NO. AO 1975				
CONTRACT					CONTRACT NO. PW 5799				
SHEET					SHEET 2 OF 4 SHEETS				
INDEX NO.					INDEX NO. 6				
TOPO. NO.					TOPO. NO. 30				

FOR LEGEND AND DETAILS SEE SHEET #4

NOTE: SAWING AT ALL RETURNS AND DRIVES ALONG THE CHRYSLER SERVICE DRIVE WILL BE PAID FOR IN LFT.

SCALE 1"=40'

NOTE - APPROXIMATELY 2288 CYDS OF SELECTED EXCAVATED MATERIAL REQUIRED FOR THIS SHEET.



CANFIELD 60' WD NOT IN CONTRACT

S.P.L. HANCOCK MATCH LINE

NOT IN CONTRACT

SEWER TO REMAIN IN SERVICE

DO NOT REMOVE

DO NOT REMOVE

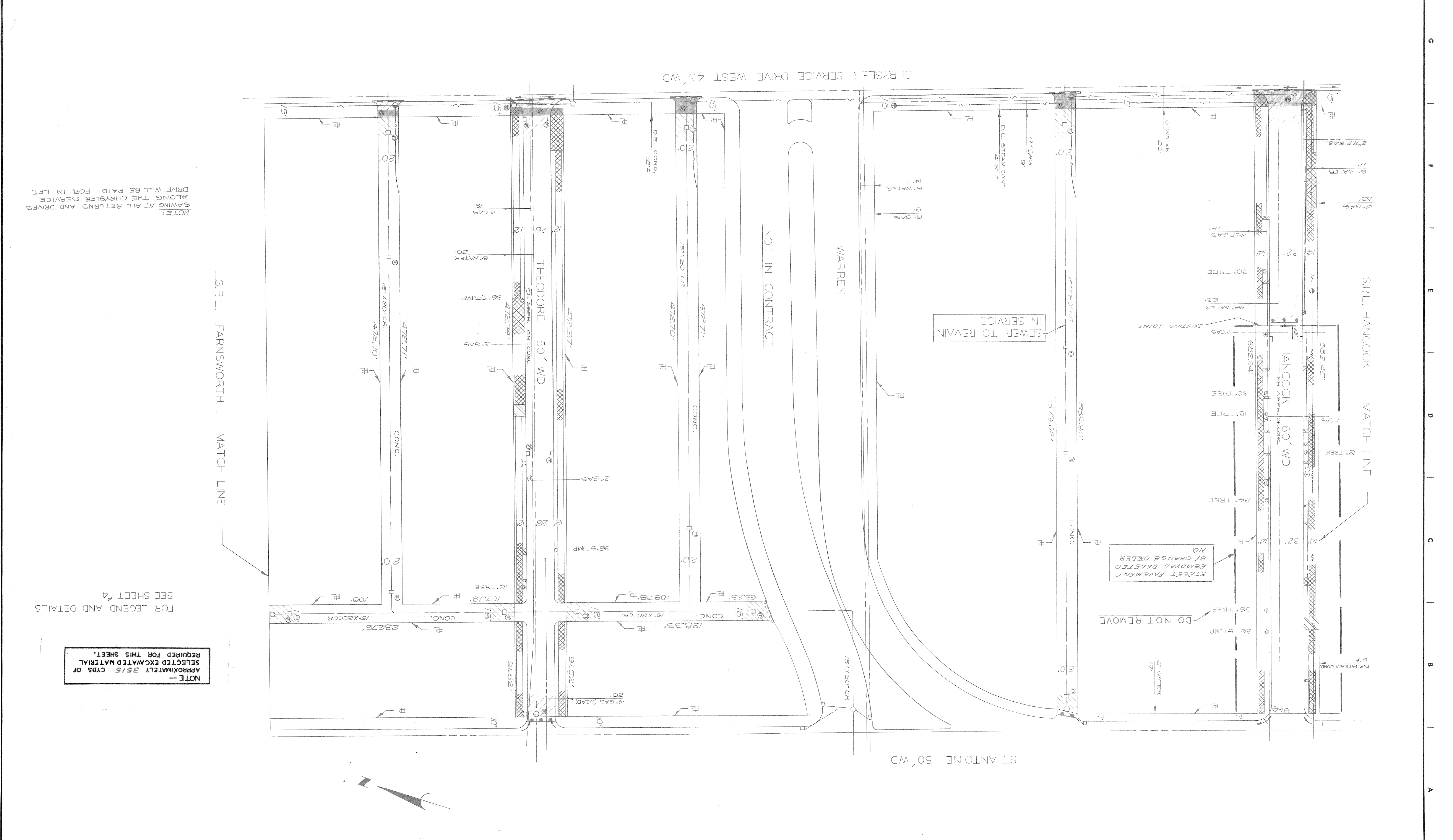
DO NOT REMOVE

NO.	DATE	DESCRIPTION
1	7/10/71	PAVEMENT B.M. ON HANCOCK REVISION
2	7/10/71	C.S. LOCATION REVISION ON HANCOCK
3	7/10/71	FINISH ELEVATIONS REVISION
4	7/10/71	UTILITY REVISIONS
5	7/10/71	GENERAL REVISIONS
6	7/10/71	GENERAL REVISIONS
7	7/10/71	GENERAL REVISIONS
8	7/10/71	GENERAL REVISIONS
9	7/10/71	GENERAL REVISIONS
10	7/10/71	GENERAL REVISIONS
11	7/10/71	GENERAL REVISIONS

CITY OF DETROIT
 DEPARTMENT OF PUBLIC WORKS
 CITY ENGINEERS OFFICE
 FOR
 DETROIT HOUSING COMMISSION

PAVEMENT REMOVAL AND MISCELLANEOUS CONSTRUCTION
 MEDICAL CENTER
 REHABILITATION PROJECT NO. 3 MICH. R-112
 REMOVAL AND MISCELLANEOUS CONSTRUCTION SHEET

TOPO NO. 30
 INDEX NO. 6



SEWER TO REMAIN IN SERVICE

STREET PAVEMENT REMOVAL DELETED BY CHANGE ORDER

DO NOT REMOVE

NOTE - APPROXIMATELY 3515 CYDS OF SELECTED EXCAVATED MATERIAL REQUIRED FOR THIS SHEET.

FOR LEGEND AND DETAILS SEE SHEET #4

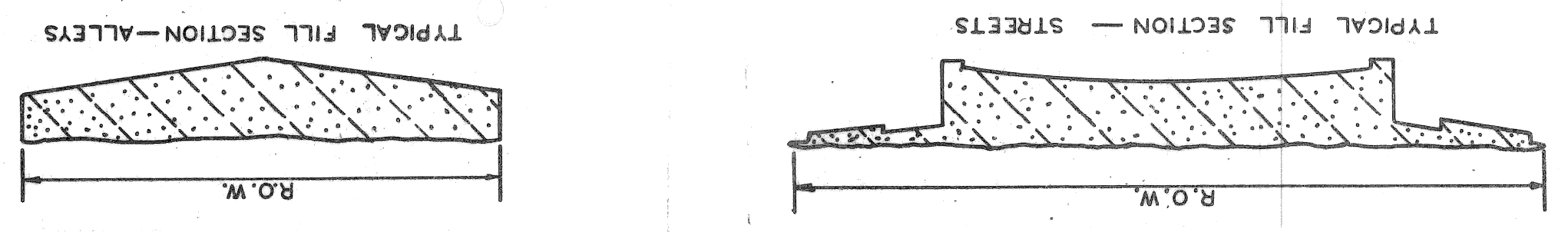
NOTE: SAWING AT ALL RETURNS AND DRIVES ALONG THE CHRYSLER SERVICE DRIVE WILL BE PAID FOR IN LFT.

SCALE 1"=40'

REVISIONS LOCATED BY COORDINATES ON SHEET NO. DESCRIPTION DATE 1 TREE REMOVAL REVISED 9/14/75 2 GAS LINE REVISED IN FARNSWORTH 9/17/75 3 MANHOLE ABANDONMENT & SEWER REVISED 10/17/75		CHECKED BY MALLEY, M. K. (initials)	TRACED BY (blank)	DRAWN BY P. G. N. (initials)	DESIGNED BY (blank)	APPROVED (Signature) HEAD CIVIL ENGINEER	ACTING ADMINISTRATIVE ENGINEER (Signature)	CITY ENGINEERS OFFICE DEPARTMENT OF PUBLIC WORKS FOR DETROIT HOUSING COMMISSION	PAVEMENT REMOVAL AND MISCELLANEOUS CONSTRUCTION MEDICAL CENTER REHABILITATION PROJECT NO. 3 MICH. R-112	DATE JUNE 9, 1971 ASSIGNMENT NO. AO 1975 CONTRACT NO. PW 5799 SHEET 4 OF 4 SHEETS
------------------------------------------------------------------------------------------------------------------------------------------------------------------------------------------------------------------------	--	----------------------------------------	----------------------	---------------------------------	------------------------	------------------------------------------------	-----------------------------------------------	------------------------------------------------------------------------------------------	---------------------------------------------------------------------------------------------------------------	--------------------------------------------------------------------------------------------

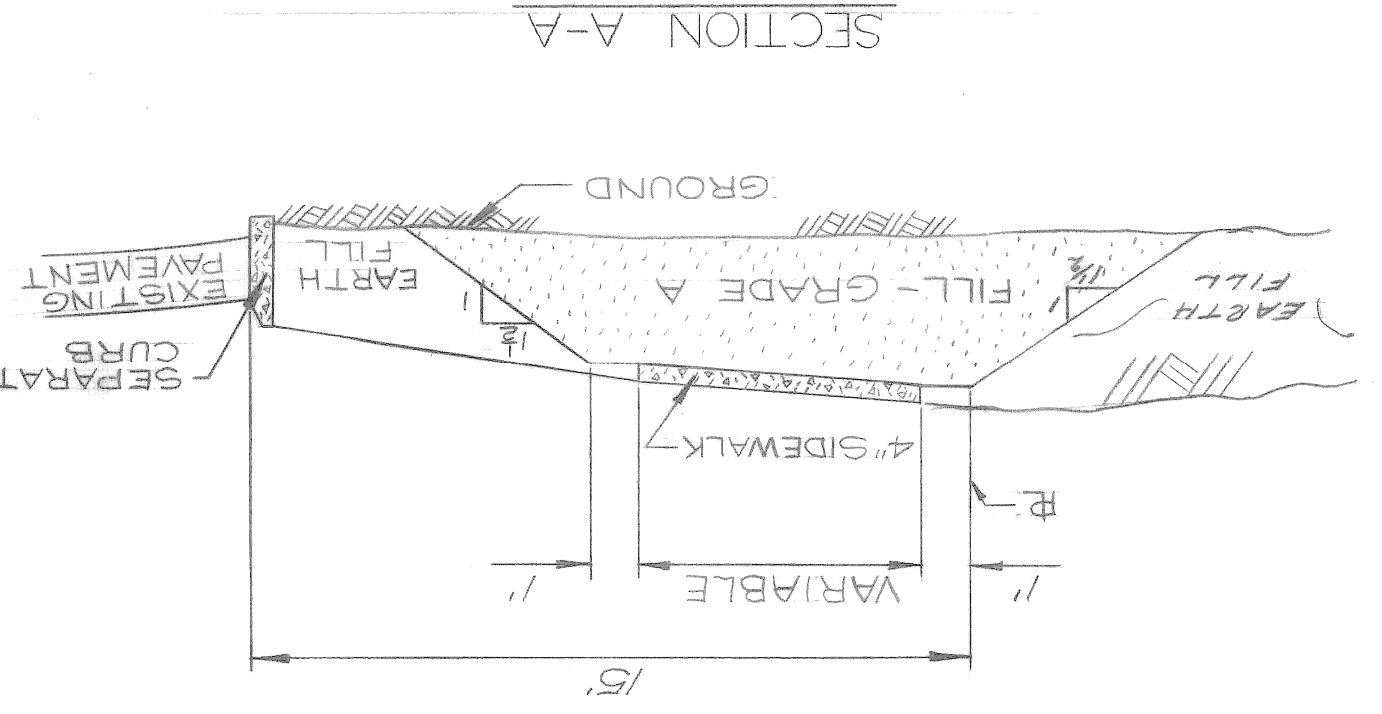
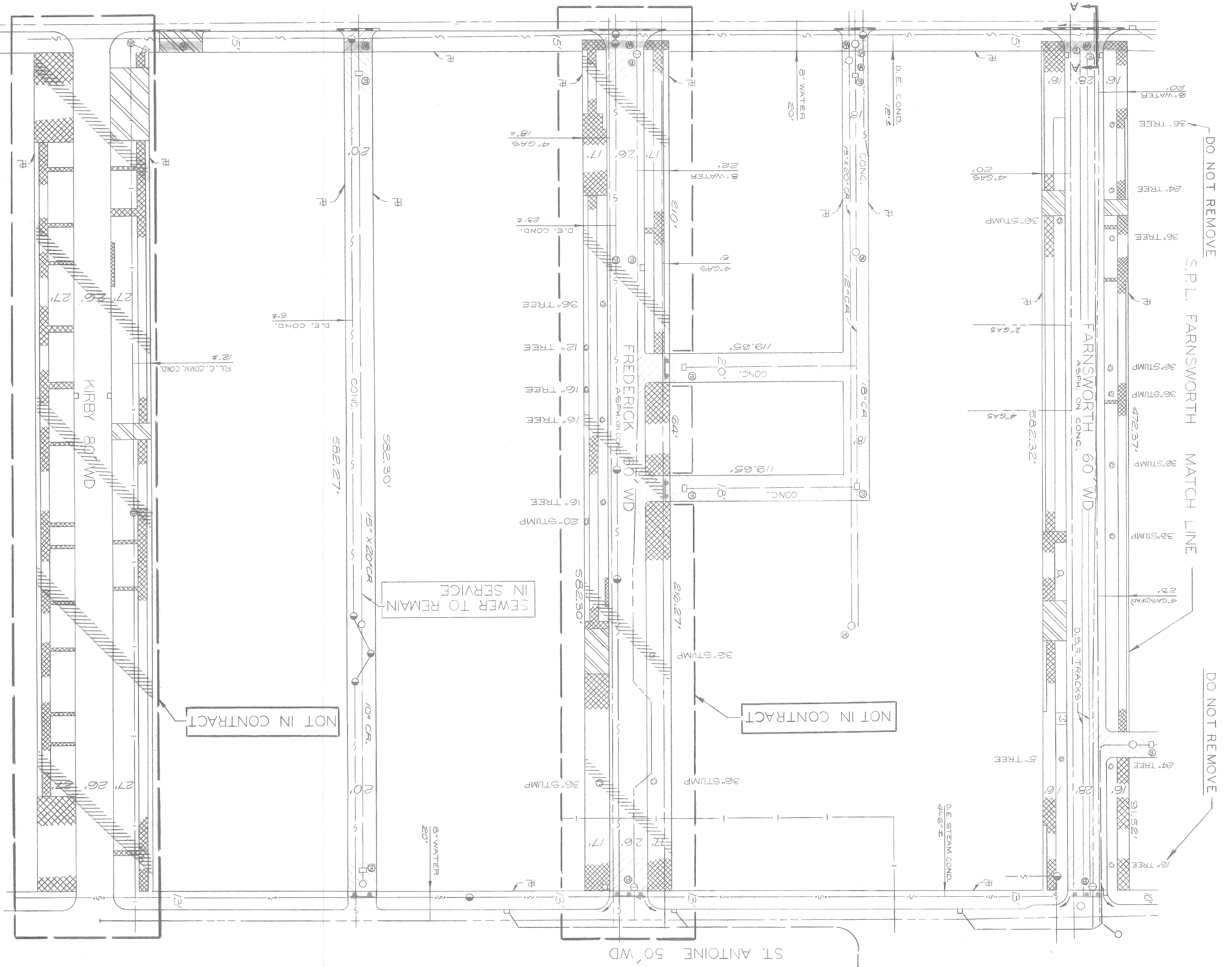
NOTE - APPROXIMATELY 1859 CYDS OF SELECTED EXCAVATED MATERIAL REQUIRED FOR THIS SHEET.

SCALE 1"=40'



BEFORE STARTING CONSTRUCTION CONTRACTOR MUST CHECK WITH UTILITIES FOR LOCATIONS OF EXISTING STRUCTURES WHETHER OR NOT INDICATED ON PLANS.

CHRYSLER SERVICE DRIVE - WEST 45' WD



NOTES:
 WHERE CALLED FOR ON THE PLANS, REMOVE THE EXISTING STREET PAVEMENT, CURBS, SIDEWALKS, DRIVEWAYS, TREES AND ALLEYS WITHIN THE RIGHT OF WAY UNLESS OTHERWISE NOTED.
 SAWING AT ALL RETURNS AND DEVICES ALONG THE CHRYSLER SERVICE DRIVE WILL BE PAID FOR IN L.F.T.
 ALL R.L.C. OVERHEAD AND UNDERGROUND LINES ARE TO REMAIN INTACT.

- LEGEND
- STREET PAVEMENT REMOVAL
 - ALLEY PAVEMENT REMOVAL
 - GIDEWALK REMOVAL
 - DRIVEWAY REMOVAL
 - CONSTRUCT STD. 4" CONC. WALK
 - ABANDON EXISTING CATCH BASIN
 - ADJUST EXISTING MANHOLE
 - ABANDON EXISTING SEWER MANHOLE
 - TREE OR STUMP REMOVAL
 - PROPOSED 25' SINGLE BEAM BARREL BARRICADE
 - PROPOSED 12.5' SINGLE BEAM BARREL BARRICADE
 - BARRICADE REMOVAL
 - CONSTRUCT SEPARATE TYPE CURB

ITEM NO.	DESCRIPTION OF ITEM	UNIT	AMOUNT	PRICE	TOTAL
1	SIDEWALK REMOVAL	SFT	7229	14844	7967
2	STREET PAVEMENT REMOVAL - UNREINFORCED	SYDS	4214	4214	7816
3	ALLEY PAVEMENT REMOVAL	SYDS	4617	4617	11298
4	DRIVEWAY REMOVAL	SFT	763	300	1346
5	TREE REMOVAL 4" DIA.	EA.	2	1	2
6	TREE REMOVAL 12" DIA.	EA.	4	1	6
7	TREE REMOVAL 24" DIA.	EA.	1	1	3
8	TREE REMOVAL 36" DIA.	EA.	1	1	1
9	TREE REMOVAL 30" DIA.	EA.	2	2	2
10	TREE REMOVAL 36" DIA.	EA.	1	1	3
11	STUMP REMOVAL	EA.	5	5	14
12	STREETCARE CURB REMOVAL	SFT	1165	1165	1165
13	STREETCARE TRACK BASE REMOVAL	SYDS	432	432	432
14	PERMANENT BARRICADE REMOVAL	EA.	1	1	1
15	SEPARATE TYPE CURB REMOVAL - REINFORCED	LF.	30	24	84
16	CATCH BASIN - ABANDONMENT	EA.	15	12	41
17	MANHOLE - ABANDONMENT	EA.	2	2	16
18	MANHOLE - ADJUSTMENT	EA.	6	6	11
19	SEWER ABANDONED ALLEYS	SYDS	4258	2223	11298
20	SEWER ABANDONED STREETS	SYDS	3888	719	1899
21	SIDEWALKS - 4" STD.	SFT	2499	2288	5787
22	SEWERAGE CURB - UNREINFORCED - TYPE II	LF.	164	208	510
23	FILL (GRADE A)	CYOS	52	59	134
24	SINGLE BEAM BARREL BARRICADE - 25' LENGTH	EA.	3	4	12
25	SINGLE BEAM BARREL BARRICADE - 12.5' LENGTH	EA.	1	2	4
26	SAWING - JOINTS	LF.	184	208	148
27	MAINTAINING TRAFFIC	LF.	520	148	520
TOTAL			54-3	300	2400
TOTAL			54-4	7967	30,040