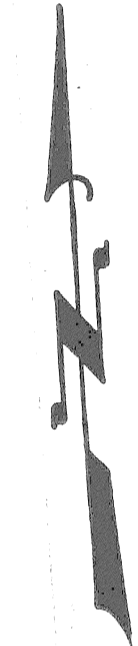
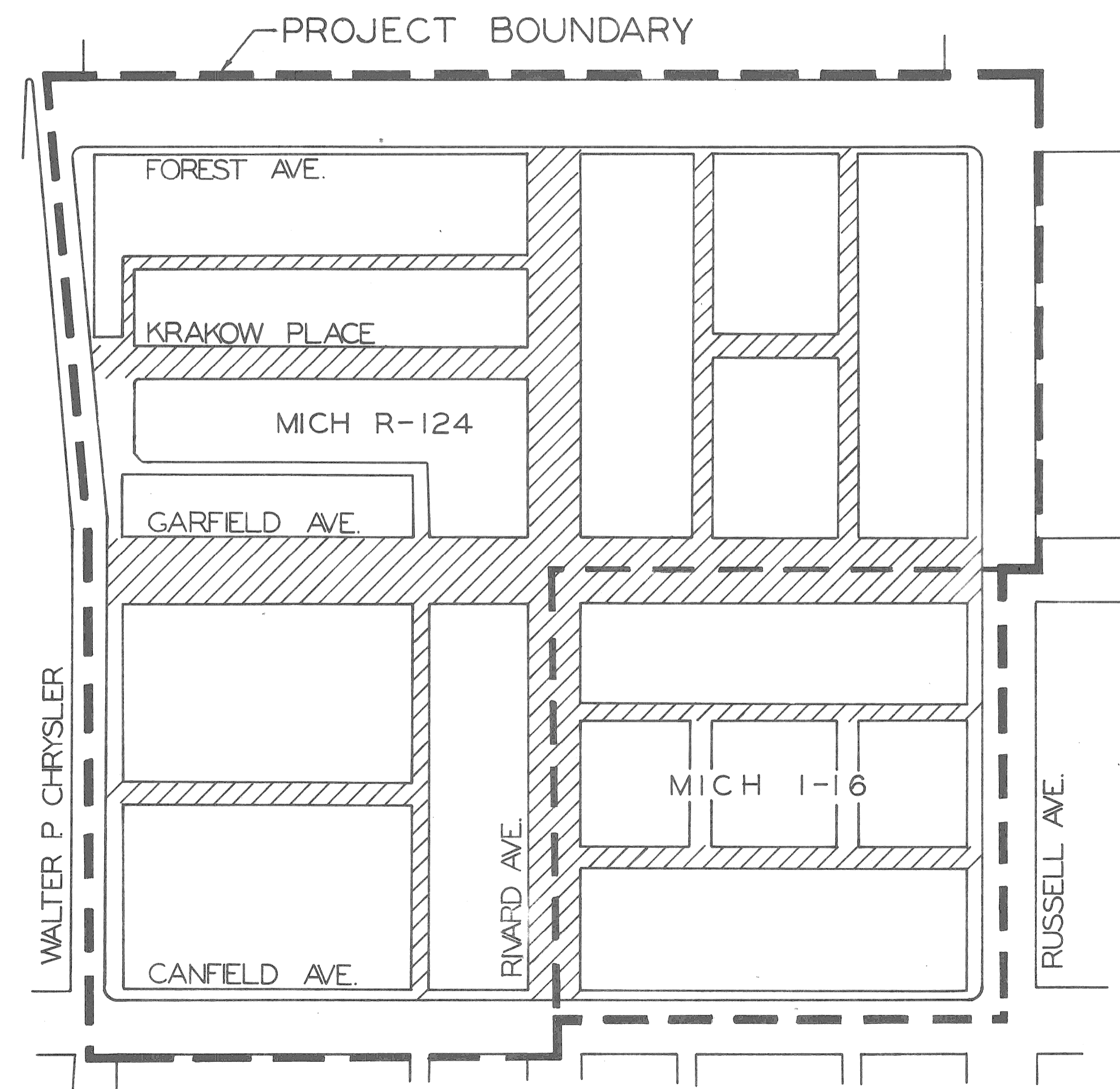


CITY OF DETROIT  
DEPARTMENT OF PUBLIC WORKS  
CITY ENGINEERS OFFICE

PLANS FOR PROPOSED  
**PAVEMENT REMOVAL &  
MISCELLANEOUS CONSTRUCTION**  
FOREST PARK REHABILITATION PROJECT NO.1  
MICH R-124 & MICH I-16  
FOR  
DETROIT HOUSING COMMISSION



PLAN INDEX

- 1. TITLE SHEET
- 2-3. REMOVAL & CONSTRUCTION PLANS  
STREET PAVING STANDARDS ATTACHED

AO 1722A  
AO 1722B

PROJECT: PAVEMENT REMOVAL AND MISCELLANEOUS CONSTRUCTION FOREST PARK REHABILITATION PROJECT NO.1 MICH. R-124 & MICH. I-16	CONTRACT NO. PW 5785
---	-------------------------

PLANS PREPARED BY  
DEPARTMENT OF PUBLIC WORKS  
CITY ENGINEERS OFFICE

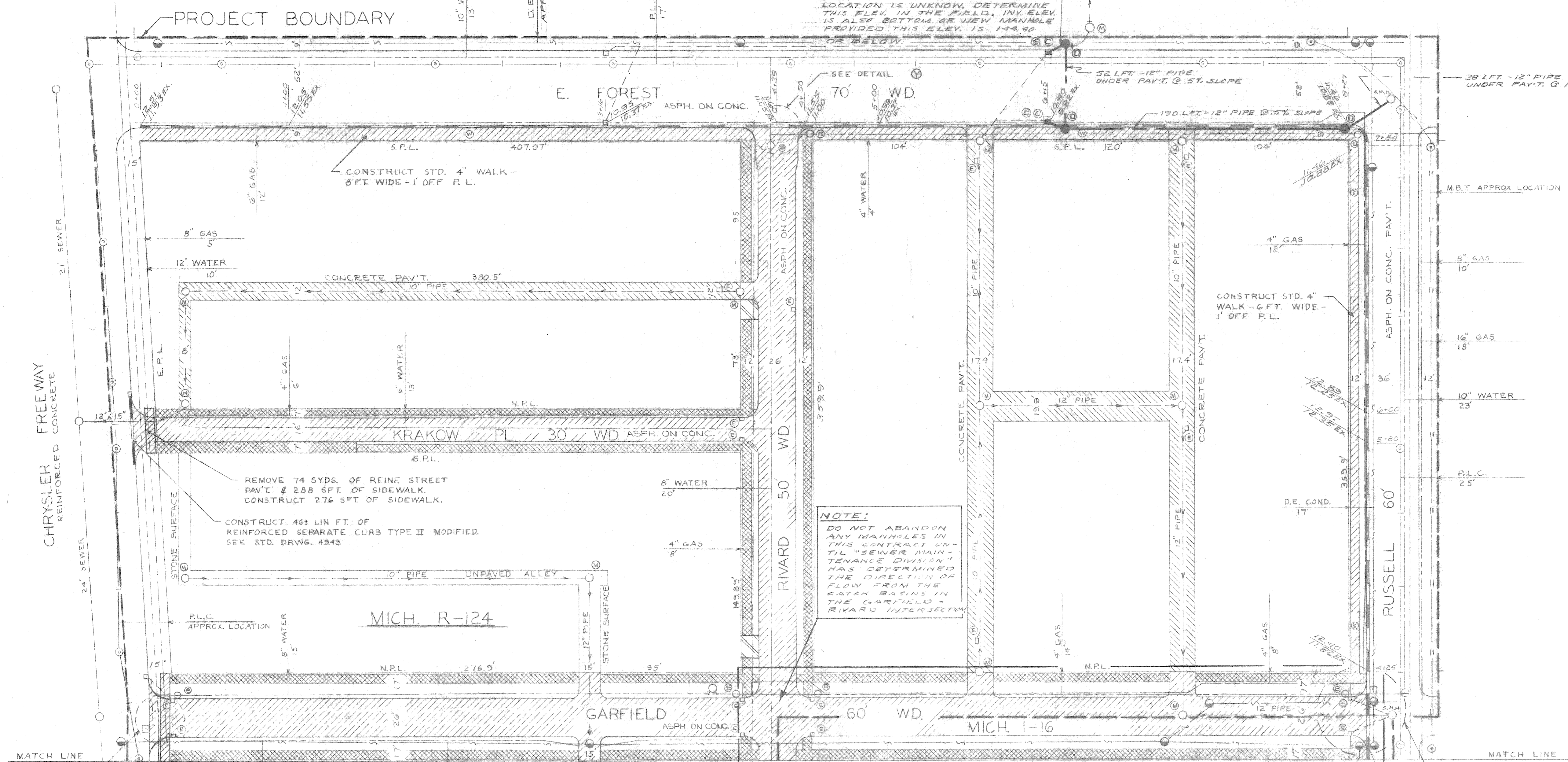
RECOMMENDED FOR APPROVAL	<i>[Signature]</i> ENGINEER OF INSPECTION	DATE
RECOMMENDED FOR APPROVAL	<i>[Signature]</i> HEAD ENGINEER	6-10-70 DATE
APPROVED	<i>[Signature]</i> ASSISTANT CITY ENGINEER	6-10-70 DATE
APPROVED	CITY ENGINEER	DATE
APPROVED	<i>[Signature]</i> COMMISSIONER OF PUBLIC WORKS	6-11-70 DATE

DATE MAY 18, 1970 DRWG. NO. 1 OF 3



**BENCH MARKS**

MARK	ELEV.
P.B.M. 40-250-A, N.E. COR. ALEXANDRINE & RIVARD	146.695
C.B.M. & HYD. N.E. COR. RUSSELL & GARFIELD	154.36
C.B.M. & HYD. N.W. COR. FOREST & RUSSELL	155.57
C.B.M. & HYD. N.E. COR. FOREST & CHRYSLER	154.03
P.B.M. 40-251-A, S.W. COR. FARNSWORTH & WARREN	153.545

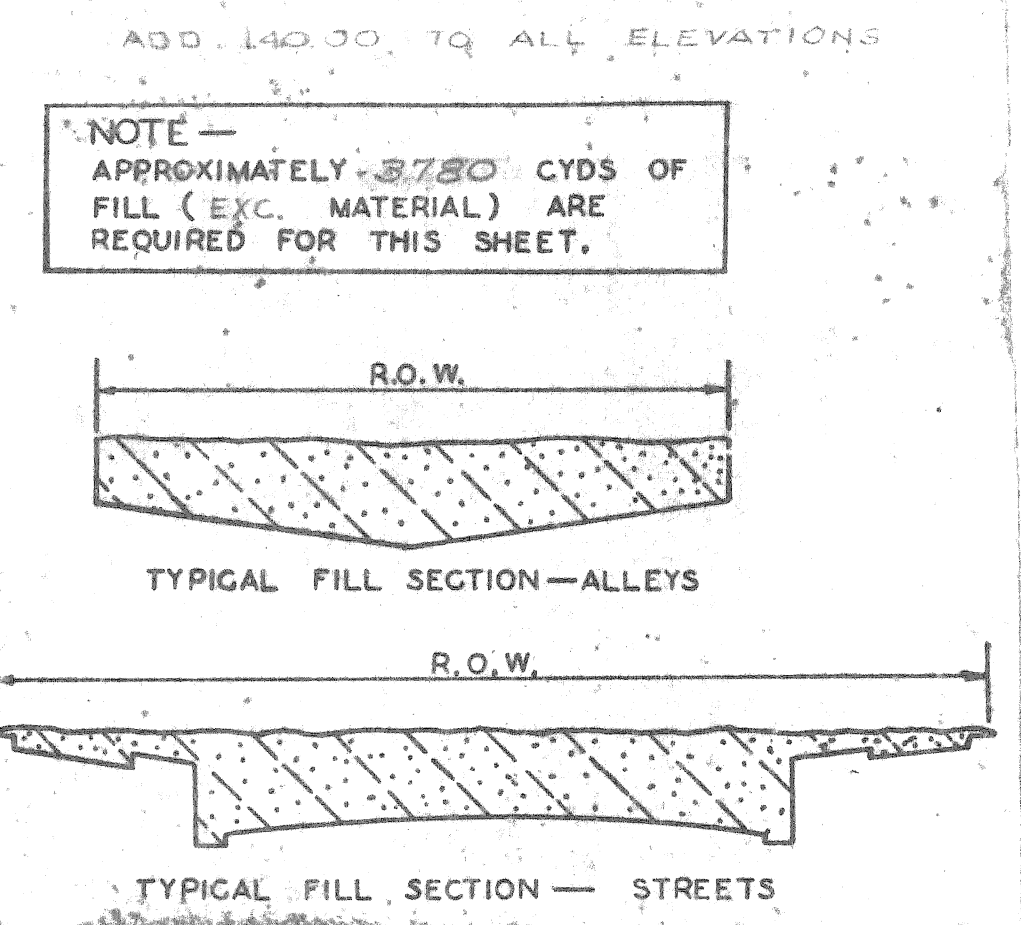


**LEGEND**

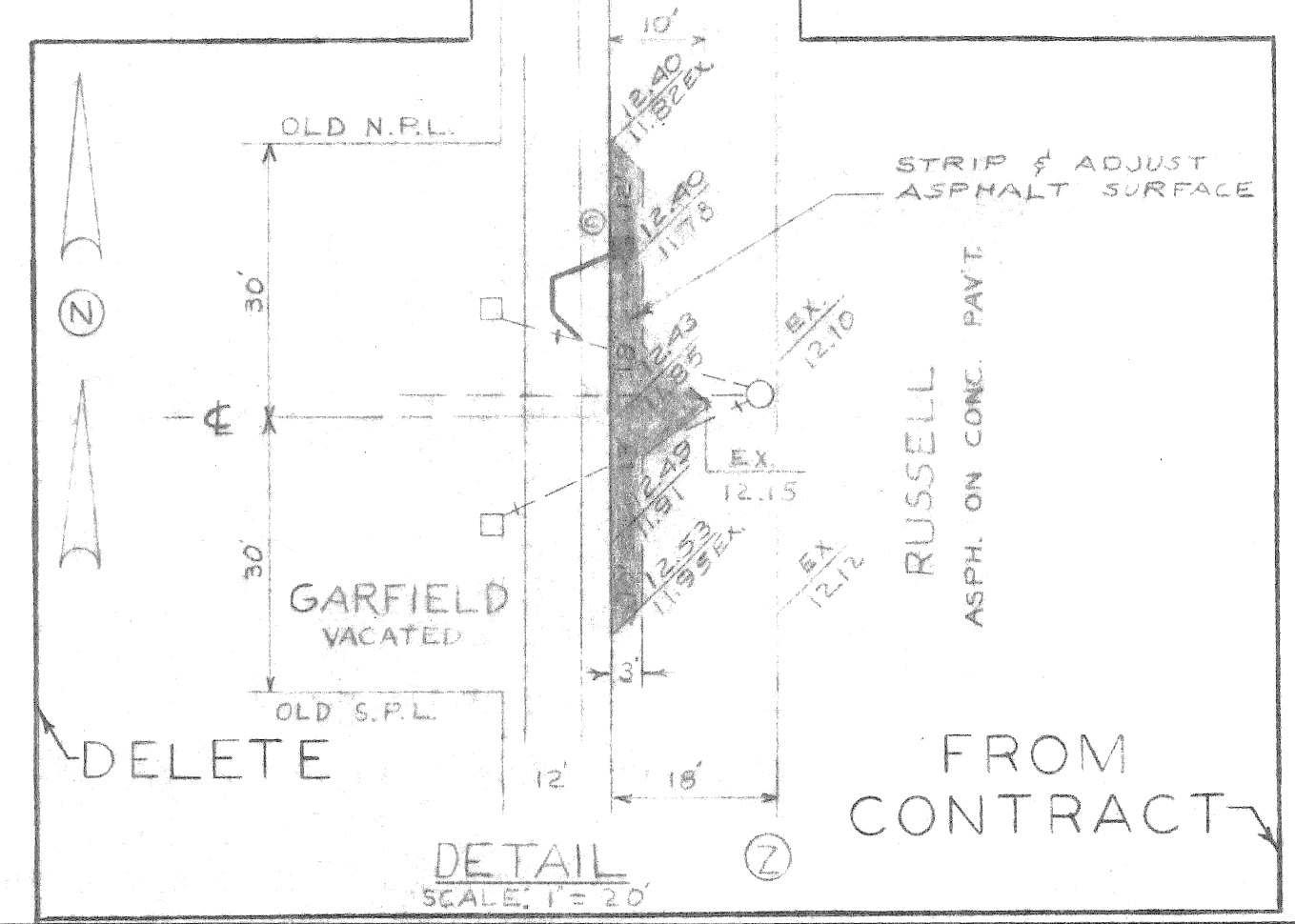
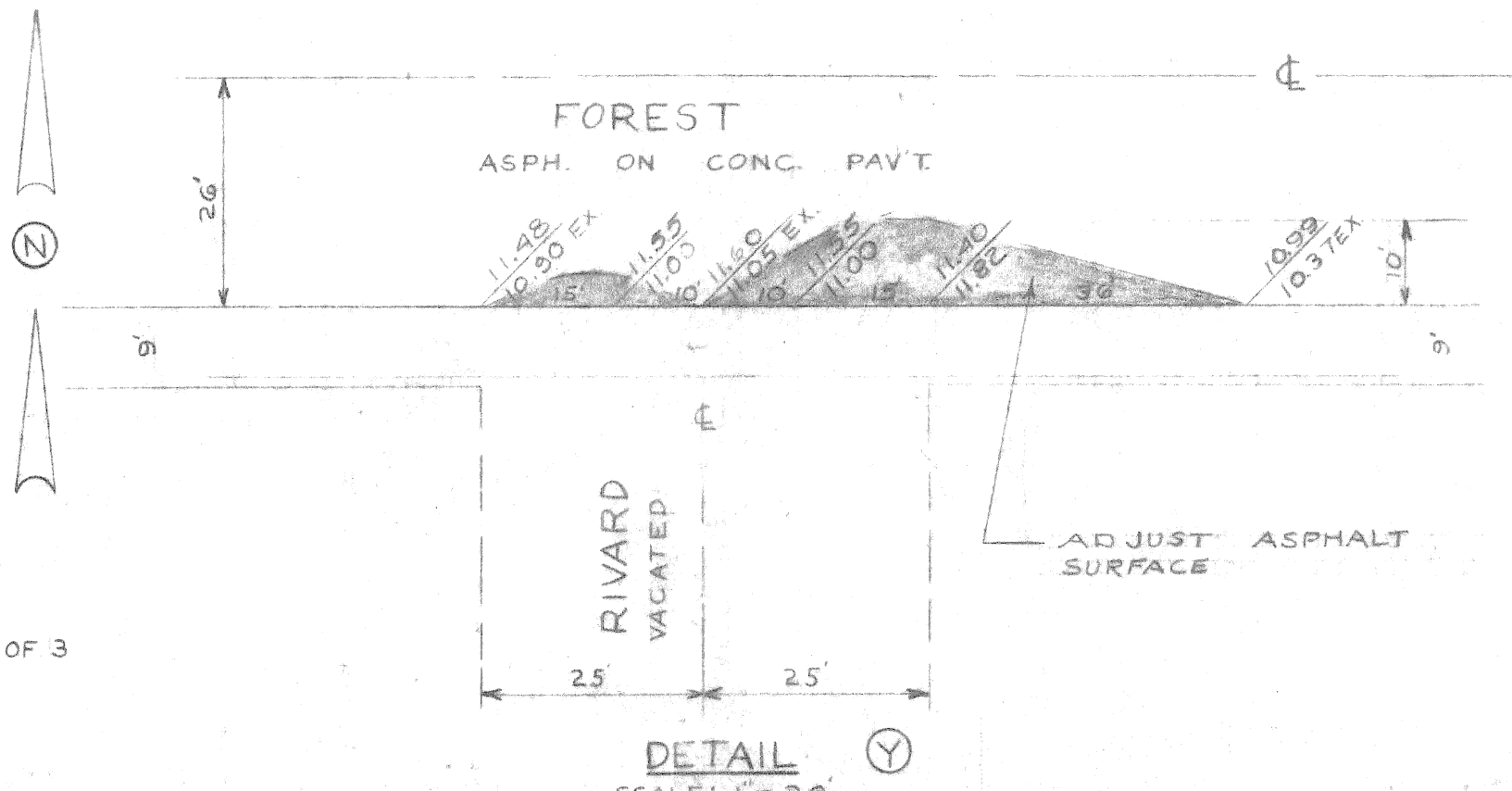
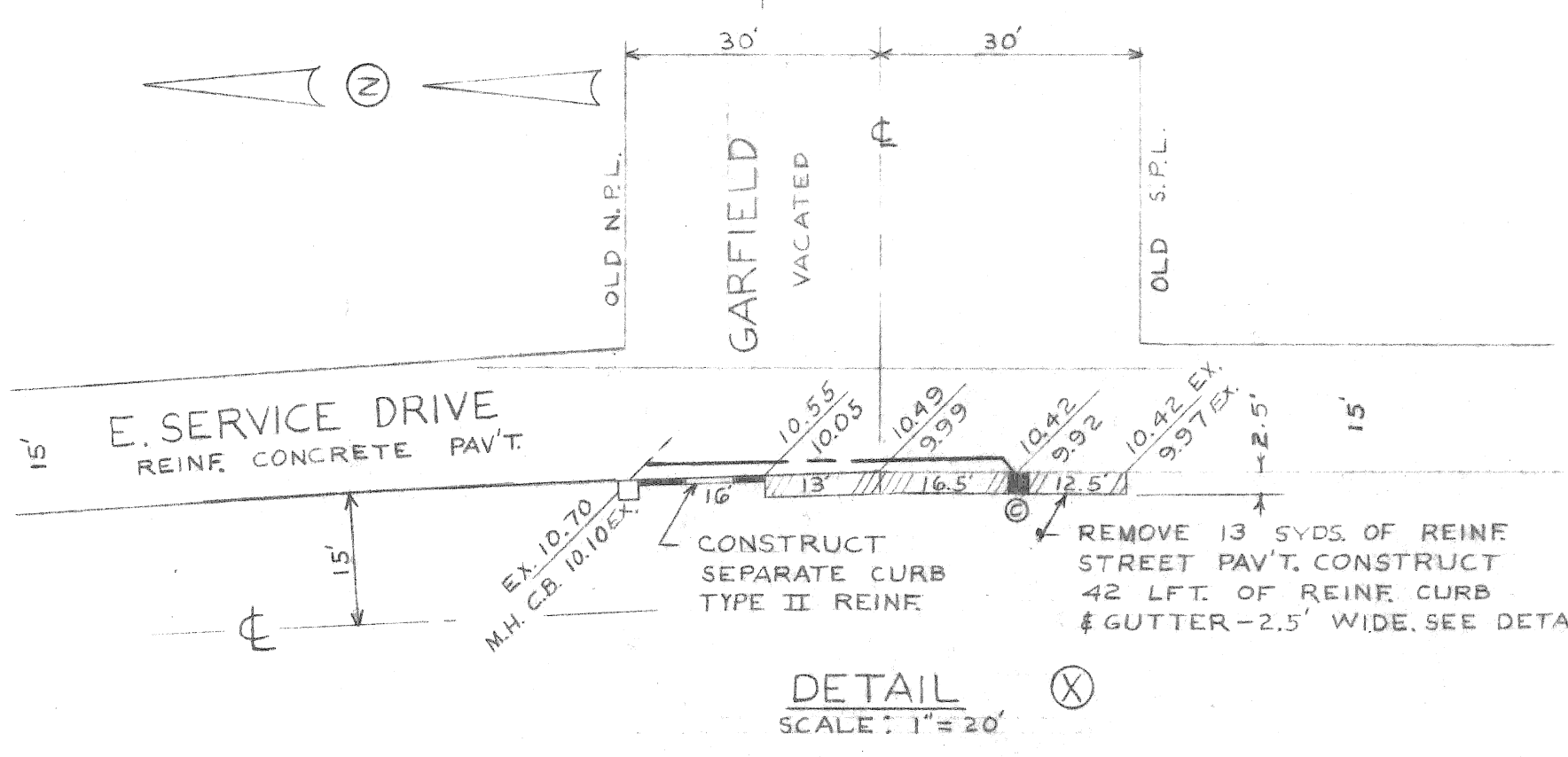
- STREET PAVEMENT REMOVAL (INCL. CURB)
- ALLEY PAVEMENT REMOVAL
- WALK REMOVAL
- DRIVE REMOVAL
- BUILDING REFERENCE NUMBERS (ESTIMATES)
- ABANDON MANHOLE
- FOR UTILITY SYMBOLS SEE STD. DWG. C-902A
- CONSTRUCT SEPARATE CURB

- ADJUST EXISTING CATCH BASINS
- ADJUST EXISTING MANHOLES & HANDHOLES
- CONSTRUCT STD. CATCH BASINS
- CONSTRUCT STD. SEWER MANHOLES
- ABANDON EXISTING CATCH BASINS
- CONSTRUCT STD. 4" CONCRETE WALK
- PROPOSED CURB ELEVATION
- PROPOSED GUTTER OR PAVEMENT ELEV.
- EXISTING ELEVATION TO REMAIN

**NOTE:**  
DO NOT ABANDON ANY MANHOLES IN THIS CONTRACT UNTIL "SEWER MAINTENANCE DIVISION" HAS DETERMINED THE DIRECTION OF FLOW FROM THE CATCH BASINS IN THE GARFIELD - RIVARD INTERSECTION.



**NOTE:**  
BEFORE STARTING CONSTRUCTION - CONTRACTOR MUST CHECK WITH UTILITIES FOR LOCATIONS OF EXISTING STRUCTURES WHETHER OR NOT INDICATED ON PLANS.



NO.	DESCRIPTION	DATE
1	AS SHOWN	1-17-70
2	REVISIONS LOCATED BY COORDINATES ON SHEET	

**APPROVED:** *J. Erickson*  
ENGINEER OF STREETS

**DESIGNED BY:** C. SHARP  
**DRAWN BY:** F. ALLGOOD  
**ESTIMATED BY:** R.C.M.  
**CHK'D:** C. SHARP  
**REVIEWED:** T. Kowalski  
**HEAD CIVIL ENGINEER**

**CITY OF DETROIT**  
DEPARTMENT OF PUBLIC WORKS  
CITY ENGINEERS OFFICE  
FOR  
DETROIT HOUSING COMMISSION

PAVEMENT REMOVAL & MISC. CONSTRUCTION  
FOREST PARK REHABILITATION PROJECT NO. 1  
MICH. R-124 & MICH. I-16

REMOVAL & CONSTRUCTION PLAN

A.O. 1722 A  
A.O. 1722 B

SHEET 2 OF 3 SHEETS  
CONTRACT PW. 5785  
DRWG No.  
DATE MAY 18, 1970

Sewer Approved 3/1/70



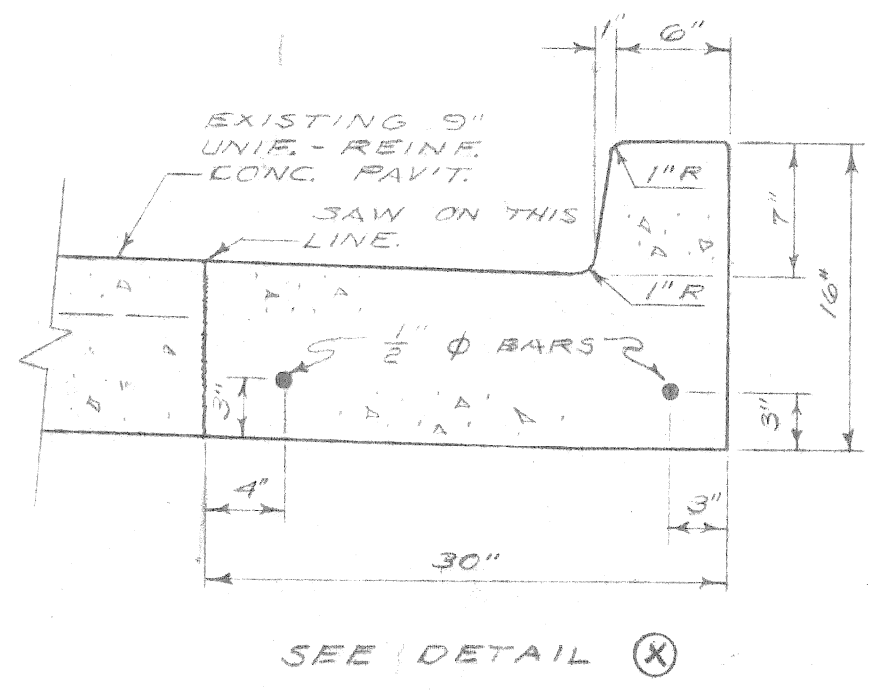
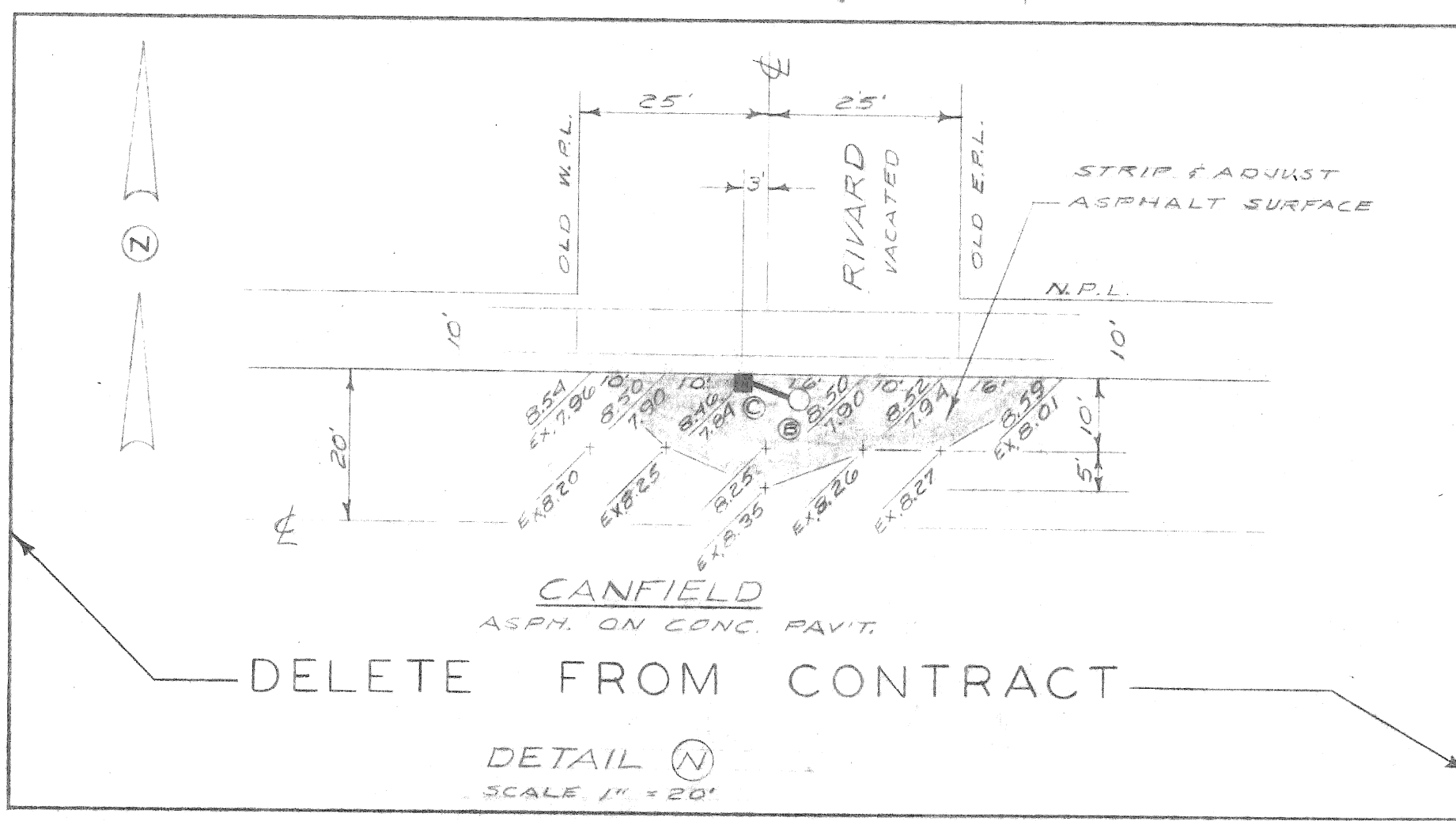
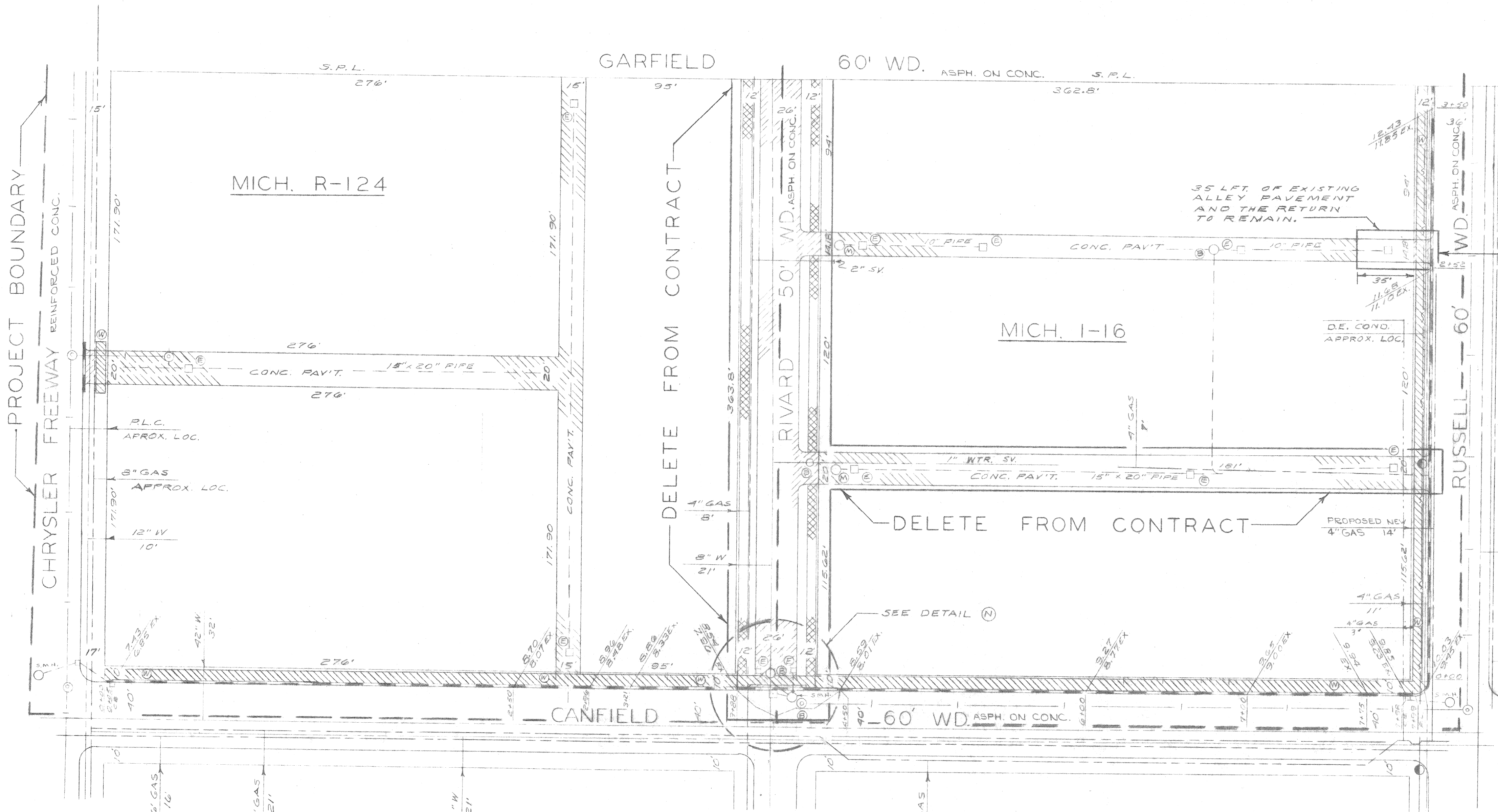
BENCH MARKS	ELEV.
P.B.M. 40-250-A N.E. COR. ALEXANDRINE & RIVARD	146.695
C.B.M. *HYD. N.E. COR. CHRYSLER & CANFIELD	152.75
C.B.M. *HYD. N.E. COR. RUSSELL & GARFIELD	154.36
C.B.M. *HYD. N.E. COR. RUSSELL & CANFIELD	155.36

REVISED C.O. NO. 1  
QUANTITIES

DELETE FROM CONTRACT

DELETE FROM CONTRACT

ITEM NO.	DESCRIPTION OF ITEM	UNIT	MICH. R-124	MICH. I-16	TOTAL
1	EXCAVATION	CYRS			90
2	BERM GRADING	SYRS	511	160	671
3	GRADING ABANDONED ALLEYS	SYRS	3439	532	3971
4	GRADING ABANDONED STREETS	SYRS	5859		5859
5	STREET PAVEMENT REMOVAL UNREINFORCED	SYRS	3251		3251
6	STREET PAVEMENT REMOVAL REINFORCED	SYRS	144		144
7	ALLEY PAVEMENT REMOVAL	SYRS	3459	532	3991
8	SEPARATE TYPE CURB REMOVAL UNREINFORCED	LFT	1462	711	2173
9	NON-REINFORCED CONCRETE REMOVAL	CYRS			
10	SIDEWALK REMOVAL	SYRS	21180	5505	26745
11	DRIVEWAY REMOVAL	SYRS	507	385	952
12	FILL - GRADE A	CYRS	65		65
13	CATCH BASIN ABANDONMENT	EA	18	3	21
14	MANHOLE SEWER ABANDONED	EA	12		12
15	MANHOLE ADJUSTMENT	EA	5	1	6
16	MANHOLE STD. NEW	EA	3		3
17	CATCH BASIN - NEW	EA	3		3
18	SEWERS - 12" PIPE	LFT	245		245
19	SEPARATE CURB - TYPE II MODIFIED - REINFORCED	LFT	90		90
20	SEPARATE CURB - TYPE II MODIFIED - UNREINFORCED	LFT	1542	625	2257
21	SIDEWALKS - 4" STANDARD	SYRS	11,453	5336	16,789
22	STRIP & ADJUST ASPHALT SURFACE	SYRS			
23	ADJUST ASPHALT SURFACE	SYRS	46		46
24	INTEGRAL CURB & GUTTER REINFORCED	LFT	42		42
25	SEWERS UNDER PAVEMENT - 12" PIPE	LFT	100		100
26	MANHOLE - RECONSTRUCT CONE	EA			1



NOTE - APPROXIMATELY 1-380 CYDS OF FILL (EXC. MATERIAL) ARE REQUIRED FOR THIS SHEET.

NOTES:  
FOR LEGEND SEE SHEET #2.  
ADD 140.00 TO ALL ELEVATIONS.

SCALE 1" = 40'

A.O. 1722 A  
A.O. 1722 B

SHEET 3 OF 3 SHEETS

CONTRACT No. PW 5785

DRWG No.

DATE MAY 18, 1970

CITY OF DETROIT  
DEPARTMENT OF PUBLIC WORKS  
CITY ENGINEERS OFFICE  
FOR  
DETROIT HOUSING COMMISSION

PAVEMENT - REMOVAL & MISC. CONSTRUCTION  
FOREST PARK REHABILITATION PROJECT NO. 1  
MICH. R-124 & MICH. I-16  
REMOVAL & CONSTRUCTION PLAN

DESIGNED BY	C. SHARP	APPROVED:	<i>J. Erickson</i> ENGINEER OF STREETS
DRAWN BY	C. SHARP	BY	<i>W. R. Bannell</i> ADMINISTRATIVE ENGINEER
ESTIMATED BY	E.C.M.	CHK'D.	C. SHARP
FINAL	C.S.	REVIEWED	<i>P. J. Stevens</i> HEAD CIVIL ENGINEER

REVISIONS LOCATED BY COORDINATES ON SHEET

Sewer Approved 5/18/70  
C. Sharp