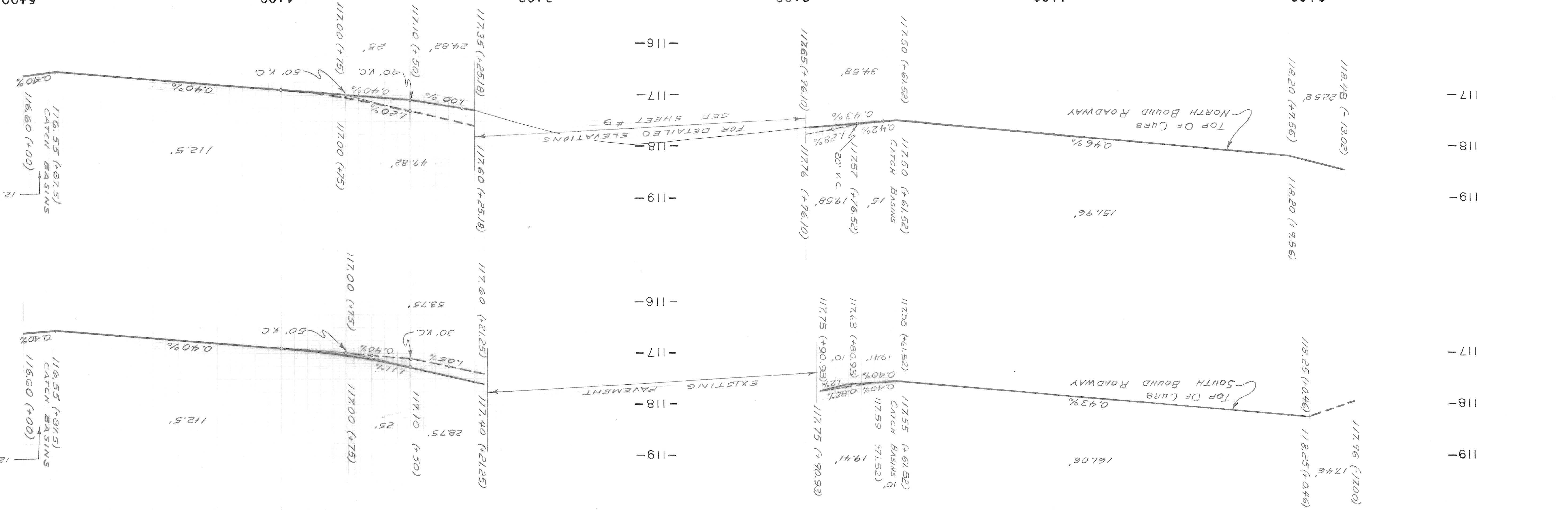
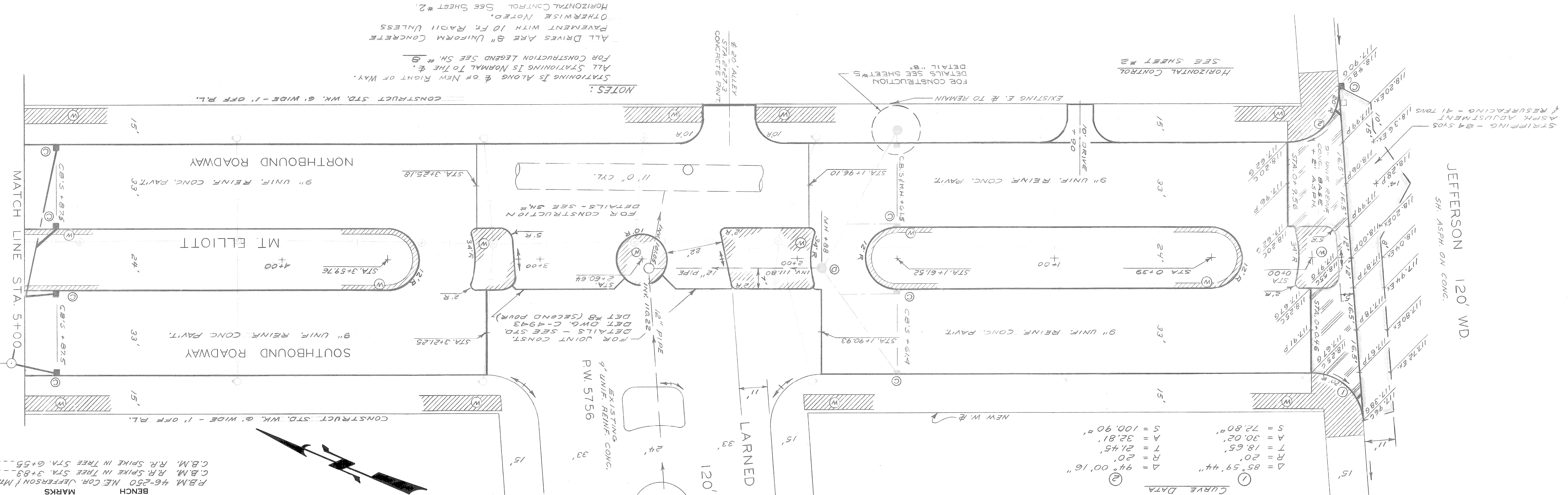


TYPE OF PAVEMENT - 9" UNIFORM REINFORCED CONCRETE WITH INTEGRAL CURB - EXCEPT AS NOTED

CURVE DATA
 Δ = 94° 00' 16"
 T = 20'
 S = 21.45'
 A = 18.65'
 S = 30.02'
 S = 72.80'
 S = 100.90'
 Δ = 85° 59' 44"

BOOK NO. LL 38 F (3)
 LEVEL DATE 12-8-67
 PAVING COMPLETED
 CONTRACTOR
 MARK CHECK WITH UNITS FOR LOCATIONS OF EXISTING STRUCTURES WHETHER OR NOT INDICATED ON PLANS.
 NOTE - FOR SYMBOLS (A) ETC. SEE STANDARD DETAIL DRAWING NO. C-4739

BENCH MARKS
 P.B.M. 46-250 NE COR. JEFFERSON & MT. ELLIOTT - 118.113
 C.B.M. R.R. SPIKE IN TREE STA. 3+82 - 118.89
 C.B.M. R.R. SPIKE IN TREE STA. 6+55 - 117.05
 ELEV.



REVISIONS		CITY OF DETROIT		DEPARTMENT OF PUBLIC WORKS		FOR		DETROIT HOUSING COMMISSION	
NO.	DATE	BY	CHECKED BY	APPROVED BY	ENGINEER OF STREETS	ADMINISTRATIVE ENGINEER	HEAD CIVIL ENGINEER	REVISIONS	DESCRIPTION
1		T. SEYMOUR							
2		C. SHARP							
3		W.D.M.							
4									
5									
6									
7									
8									
9									
10									
11									
12									
13									
14									
15									
16									
17									
18									
19									
20									
21									
22									
23									
24									
25									
26									
27									
28									
29									
30									
31									
32									
33									
34									
35									
36									
37									
38									
39									
40									
41									
42									
43									
44									
45									
46									
47									
48									
49									
50									
51									
52									
53									
54									
55									
56									
57									
58									
59									
60									
61									
62									
63									
64									
65									
66									
67									
68									
69									
70									
71									
72									
73									
74									
75									
76									
77									
78									
79									
80									
81									
82									
83									
84									
85									
86									
87									
88									
89									
90									
91									
92									
93									
94									
95									
96									
97									
98									
99									
100									

DATE JUNE 15, 1970
 ASSIGNMENT NO. A.O. 1821
 CONTRACT NO. PW 5775
 SHEET 6 OF 13 SHEETS

CITY OF DETROIT
 DEPARTMENT OF PUBLIC WORKS
 FOR
 DETROIT HOUSING COMMISSION

PAVING OF MT. ELLIOTT
 JEFFERSON TO MONROE
 ELWOOD PARK REHABILITATION PROJECT NO. 2 MICH. R-62
 PAVING PLAN
 JEFFERSON TO STA 5+00

BOOK NO. LL 38 F (3)
 LEVEL DATE 12-8-67
 PAVING COMPLETED

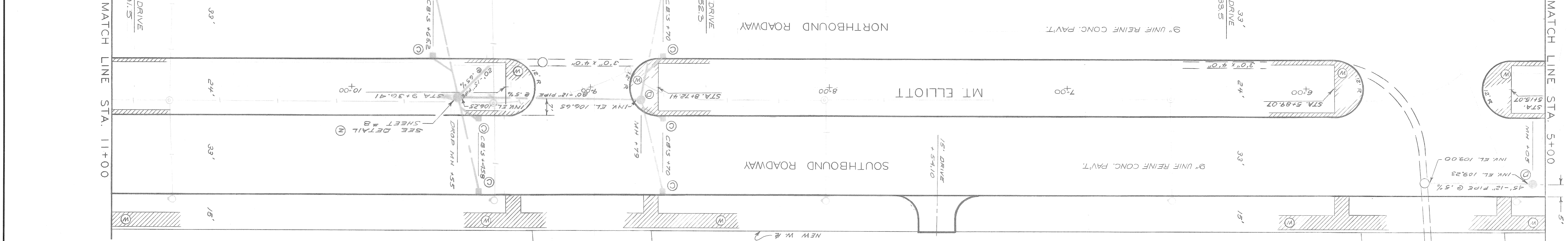
MARKS
 BENCH MARKS
 P.B.M. 46-250 NE COR. JEFFERSON & MT. ELLIOTT - 118.113
 C.B.M. R.R. SPIKE IN TREE STA. 3+82 - 118.89
 C.B.M. R.R. SPIKE IN TREE STA. 6+55 - 117.05
 ELEV.

TYPE OF PAVEMENT - 9" UNIFORM REINFORCED CONCRETE WITH INTEGRAL CURB - EXCEPT AS NOTED.		SCALE: HORIZONTAL 1"=20' VERTICAL 1"=2'
BOOK: LL 38 F (3)	DATE: 12-8-67	LEVEL: PG 2
NO. 3	DATE: 12-8-67	LEVEL: PG 2
NOTE - FOR SYMBOLS (A) ETC. SEE STANDARD DETAIL DRAWING NO. C-173		

MARKS
 BENCH: C.B.M. R.R. SPIKE IN TREE STA 6+55 - 117.05 ELEV.
 C.B.M. HYD. N.W. COR. FORT & MT ELLIOTT - 116.04
 P.B.M. 46-251 N.E. COR. LAFAYETTE & MT ELLIOTT - 114.89

CURVE DATA

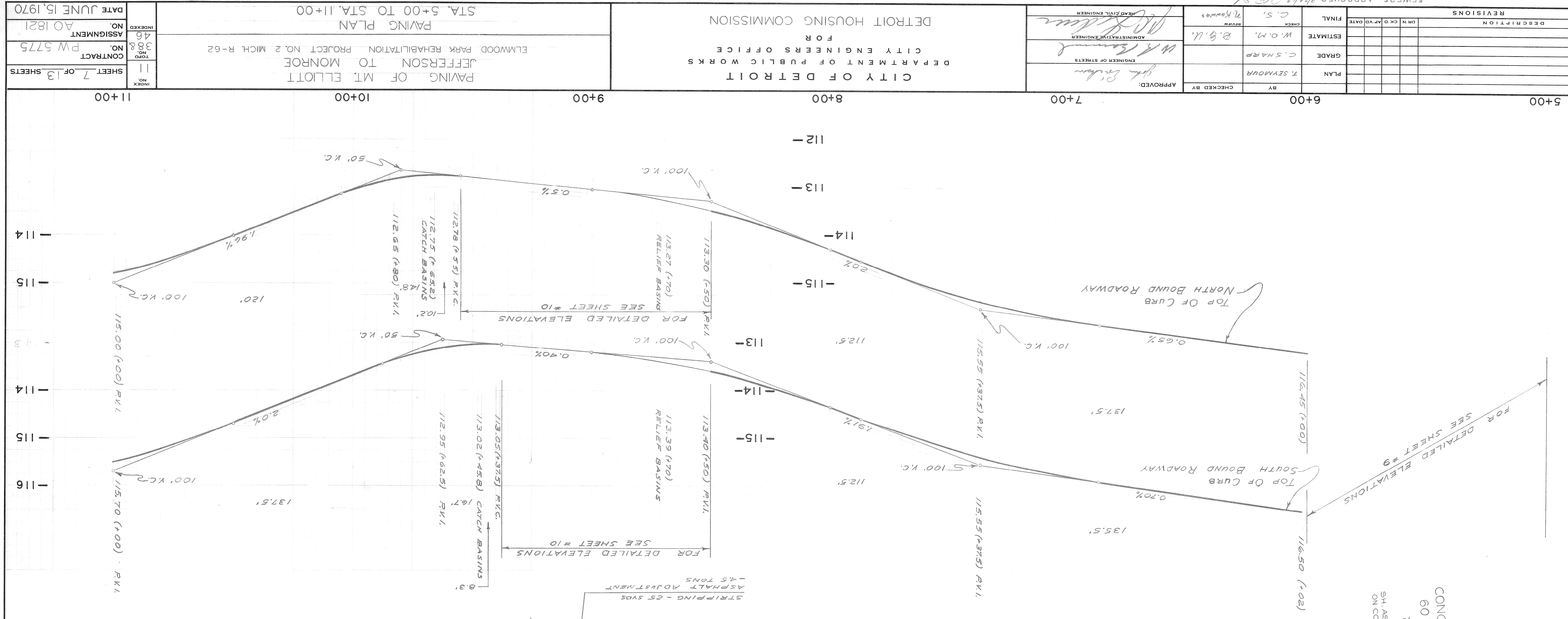
①	Δ = 93° 59' 39"	R = 20'	T = 21.44'	A = 32.81'	S = 100.90'
②	Δ = 86° 00' 21"	R = 15'	T = 14.00'	A = 22.52'	S = 40.95'
③	Δ = 93° 59' 39"	R = 15'	T = 16.08'	A = 24.61'	S = 56.76'
④	Δ = 93° 59' 39"	R = 15'	T = 16.08'	A = 24.61'	S = 56.76'



NOTES:
 ALL STATIONING IS NORMAL TO THE & OF NEW RIGHT OF WAY.
 FOR CONSTRUCTION LEGEND SEE SH. # 8.
 ALL DRIVES ARE 8" UNIFORM CONCRETE PAVEMENT WITH 10' FT. RADIUS UNLESS OTHERWISE NOTED.
 HORIZONTAL CONTROL SEE SHEET # 2.

STRIPING - 25 SYDS
 ASPHALT ADJUSTMENT - 4.5 TONS

STRIPING - 55 SYDS
 ASPHALT ADJUSTMENT - 9.5 TONS



DATE: JUNE 15, 1970	INDEXED: 46	ASSIGNMENT: PW 5775	CONTRACT NO.: 388	SHEET: 7 OF 13 SHEETS
PAVING PLAN STA. 5+00 TO STA. 11+00 JEFFERSON TO MONROE ELMWOOD PARK REHABILITATION PROJECT NO. 2 MICH. R-62				
CITY OF DETROIT DEPARTMENT OF PUBLIC WORKS CITY ENGINEERS OFFICE FOR DETROIT HOUSING COMMISSION				
APPROVED: [Signature]	ENGINEER OF STREETS	ADMINISTRATIVE ENGINEER	HEAD CIVIL ENGINEER	SEWERS APPROVED [Signature]
BY: [Signature]	CHECKED BY: [Signature]	PLAN: T. SEYMOUR	GRADE: C.S. HARP	ESTIMATE: W.O.M. B.G.U.
FINAL: [Signature]	C.S.	REVIEW: [Signature]	2. Kowals	REVISIONS:

SCALE: HORIZONTAL	VERTICAL
BOOK	LEVEL
NO. 12-8-67	DATE
NOTE - FOR SYMBOLS (A) ETC. SEE STANDARD DETAIL DRAWING NO. C-173	
CONTRACTOR'S NAME	
CONTRACT NO.	
DATE	

MARKS BENCH ELEV.

P.M. 40-250 N.E. COR. JEFFERSON & MT. ELLIOTT 118.13

C.B.M. R.R. SPIKE IN TREE STA 3+83 118.89

C.B.M. R.R. SPIKE IN TREE STA 4+55 117.05

EXIST. PAV'T

EXIST. PAV'T

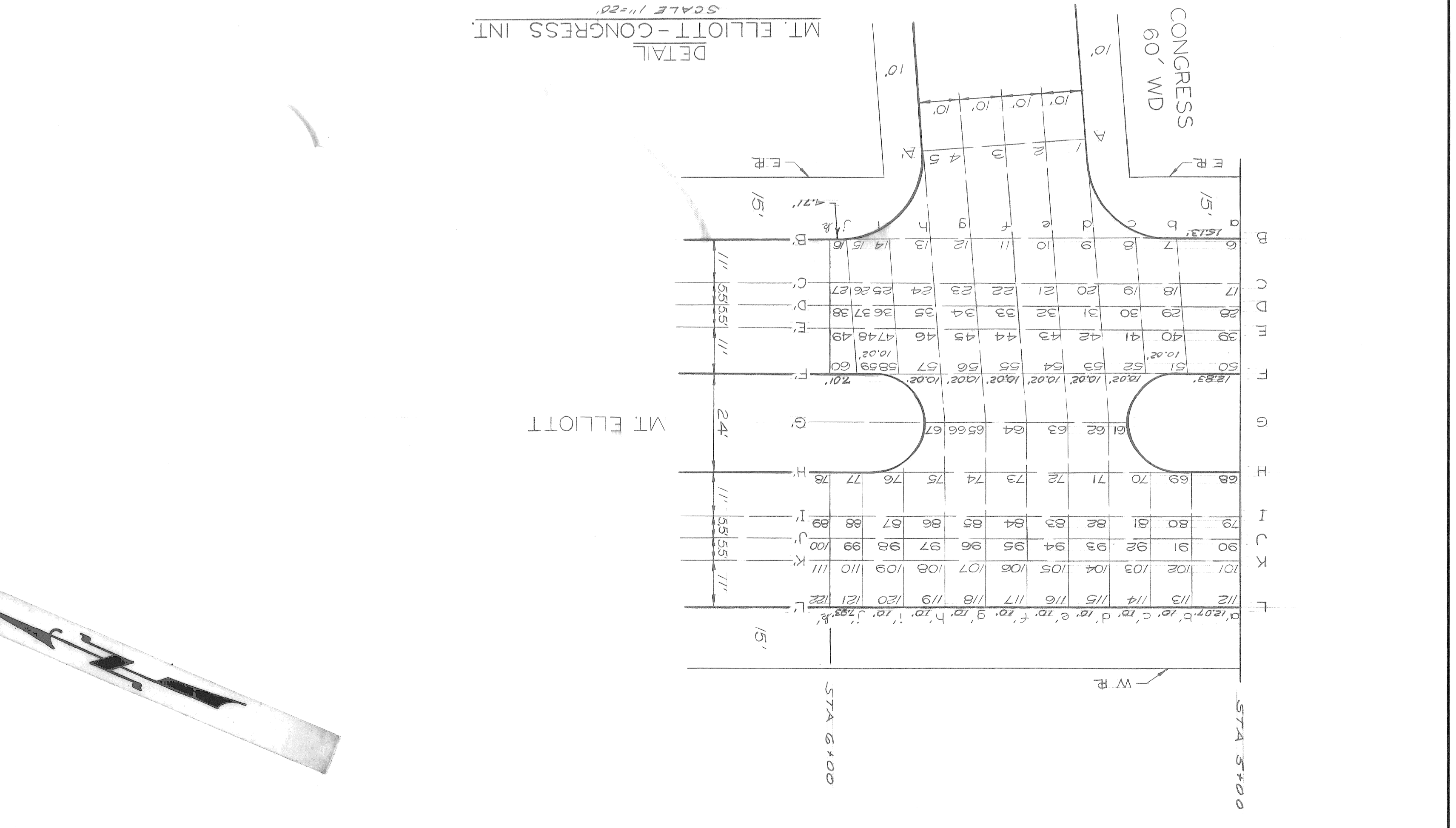
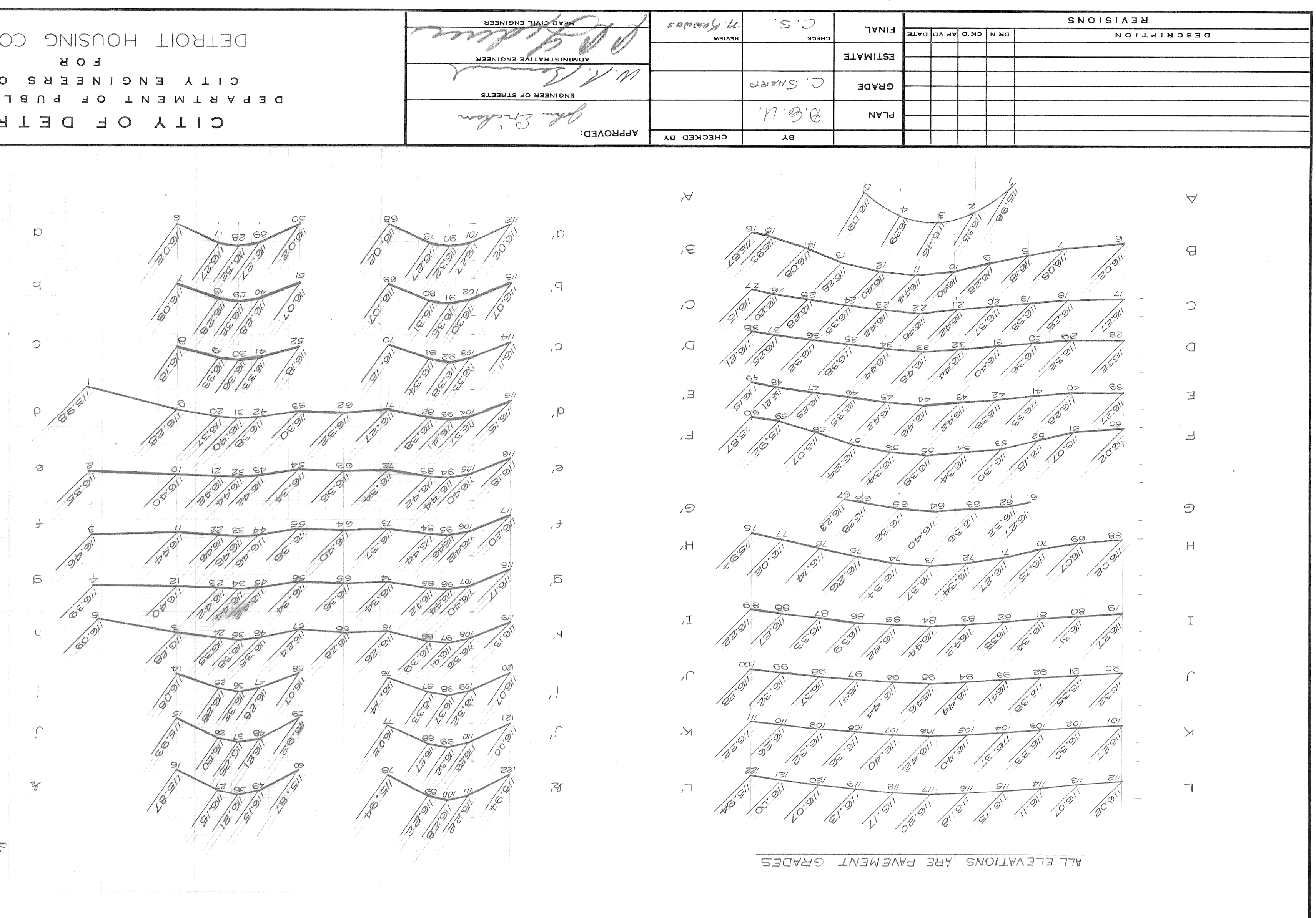
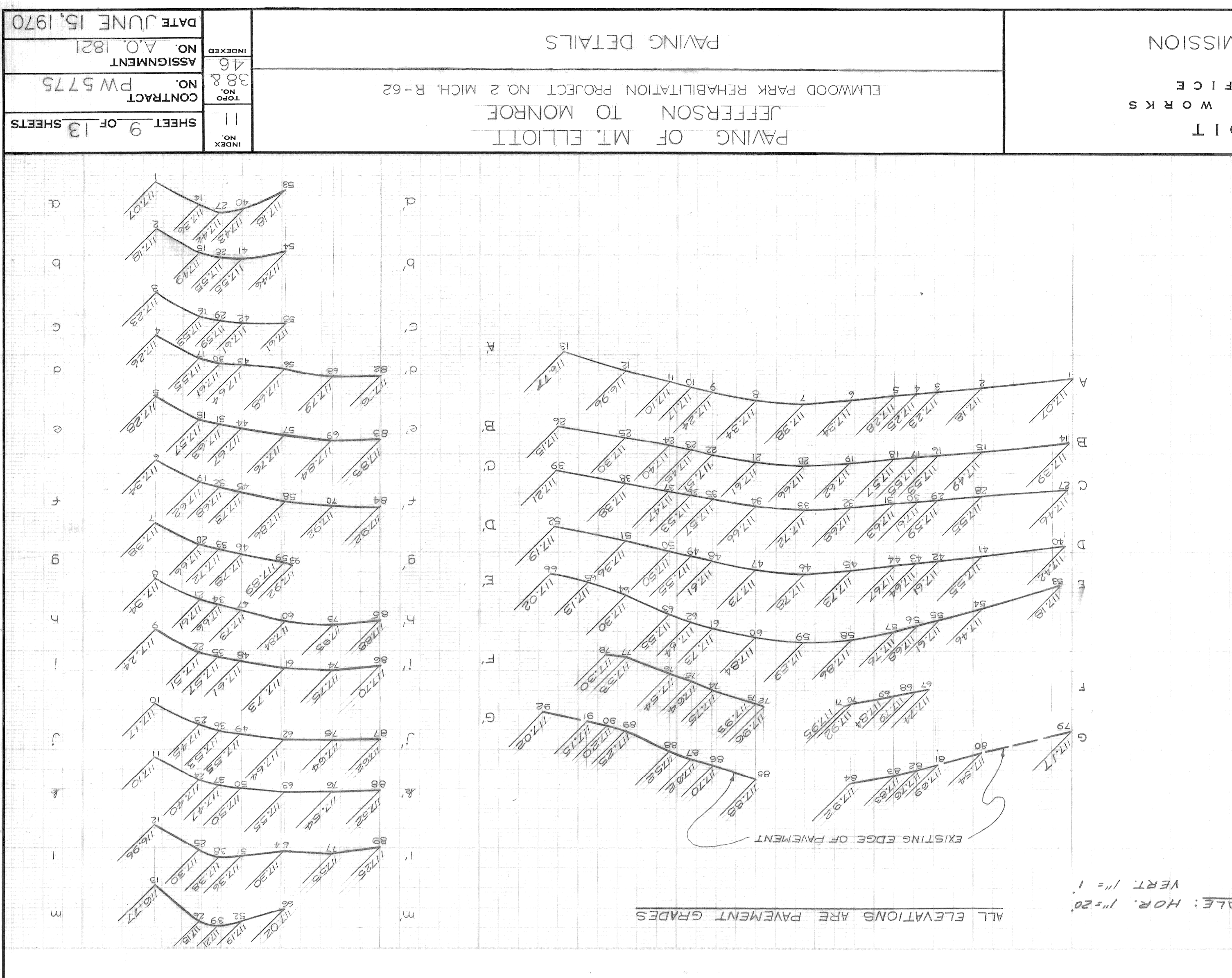
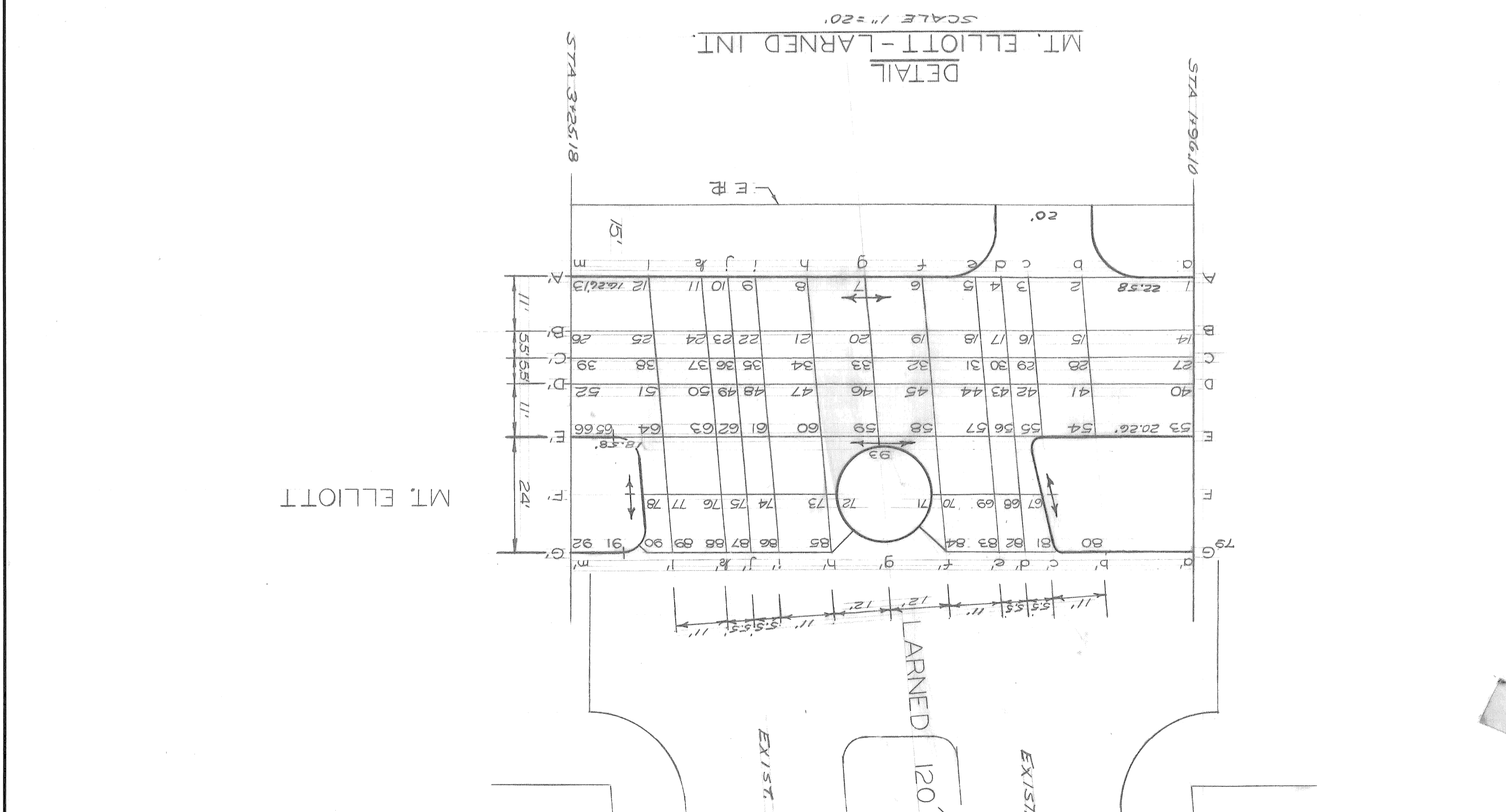
LARNED 120' WD

EXIST. PAV'T

MT. ELLIOTT

STA 3+25.18

STA 3+00



DATE	JUNE 15, 1970
INDEXED	NO. 46
ASSIGNMENT	NO. 388
CONTRACT	NO. PW 5775
SHEET	9 OF 13 SHEETS

PAVING OF MT. ELLIOTT

JEFFERSON TO MONROE

ELMWOOD PARK REHABILITATION PROJECT NO. 2 MICH. R-62

PAVING DETAILS

CITY OF DETROIT

DEPARTMENT OF PUBLIC WORKS

FOR

CITY ENGINEERS OFFICE

DETROIT HOUSING COMMISSION

APPROVED BY	BY	CHECKED BY	REVIEW	FINAL
<i>J. E. ...</i>	8 & U.	C. S.	71. Grades	C. S.
ENGINEER OF STREETS	GRADE	ESTIMATE	DESCRIPTION	REVISIONS
<i>W. A. ...</i>				
ADMINISTRATIVE ENGINEER				
<i>[Signature]</i>				
HEAD CIVIL ENGINEER				

SCALE	HORIZONTAL	VERTICAL
DATE	LEVEL	BOOK
12-2-67	LL 38 F	PG 3
DRAWING NO. C-417		
CONTRACTOR		
BROKE STARTING CONSTRUCTION		
MARK CHECK WITH UTILITIES FOR LOCATION OF EXISTING		
STRUCTURES WHETHER OR NOT INDICATED ON PLANS.		
NOTE - FOR SYMBOLS (A) ETC. SEE STANDARD DETAIL DRAWING NO. C-417		

BENCH MARKS

C.B.M. → HYD. N.W. COR. FORT # 116.04
 C.B.M. → HYD. N.W. COR. MONROE # 114.89
 C.B.M. → HYD. N.W. COR. MT. ELLIOTT # 120.36

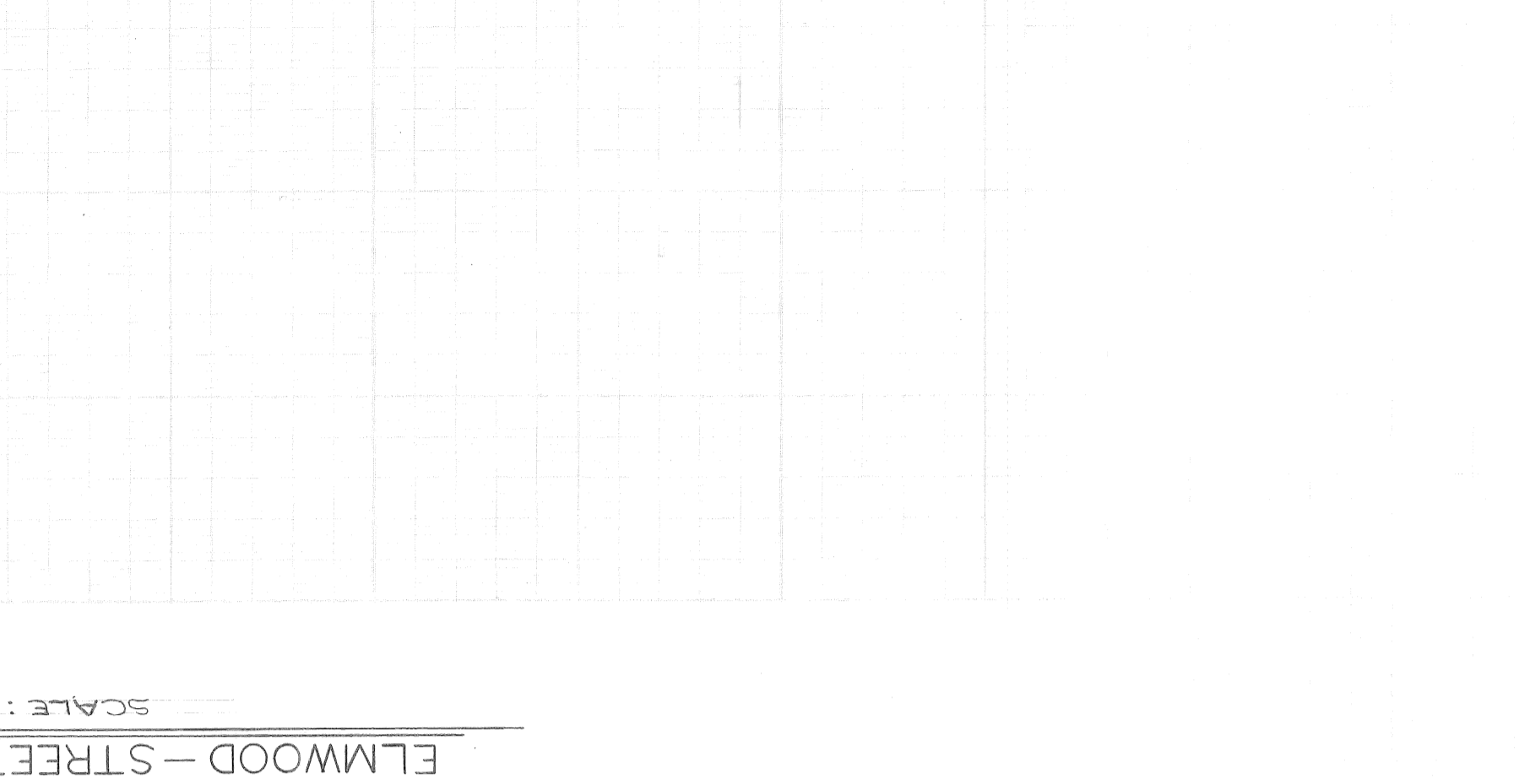
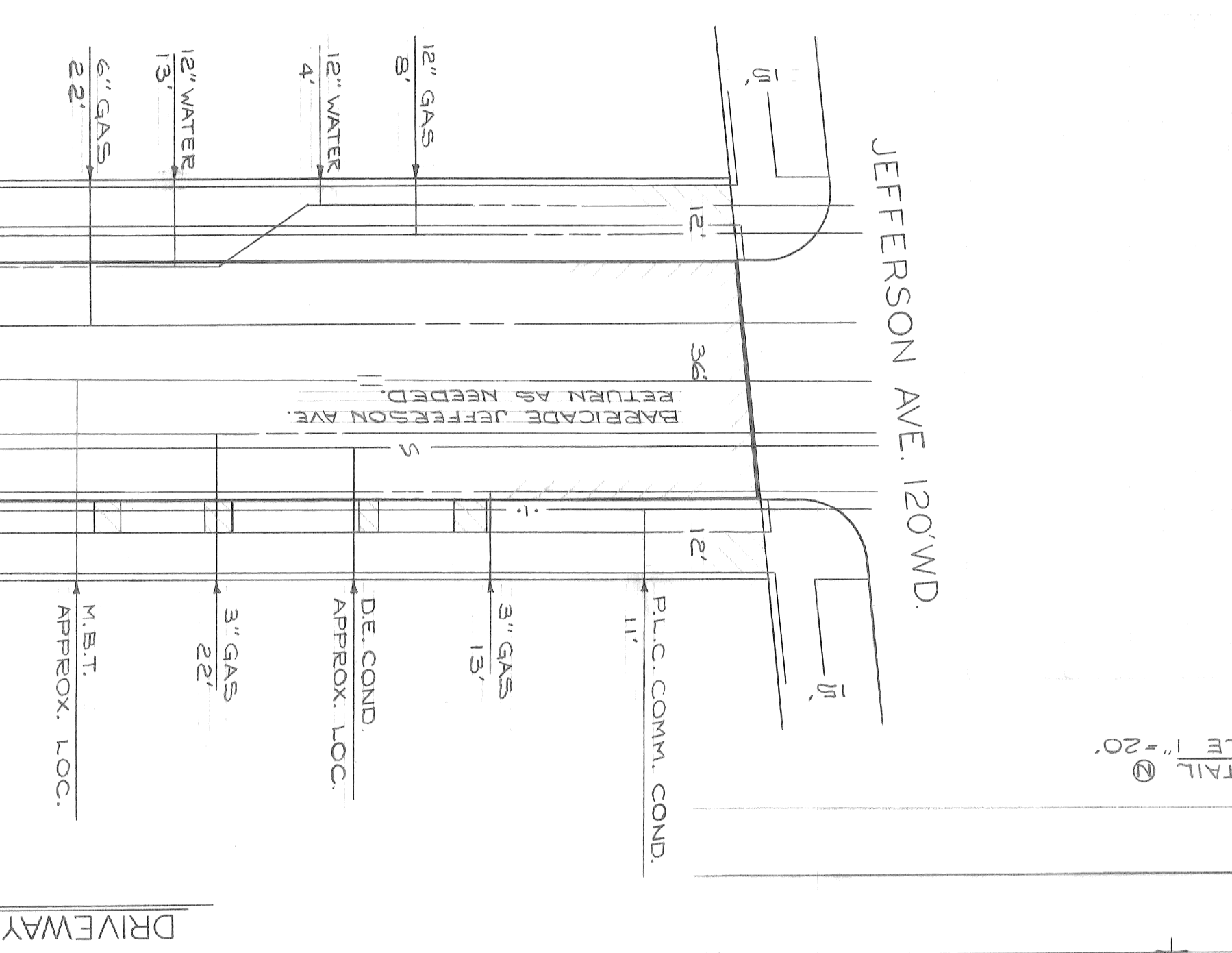
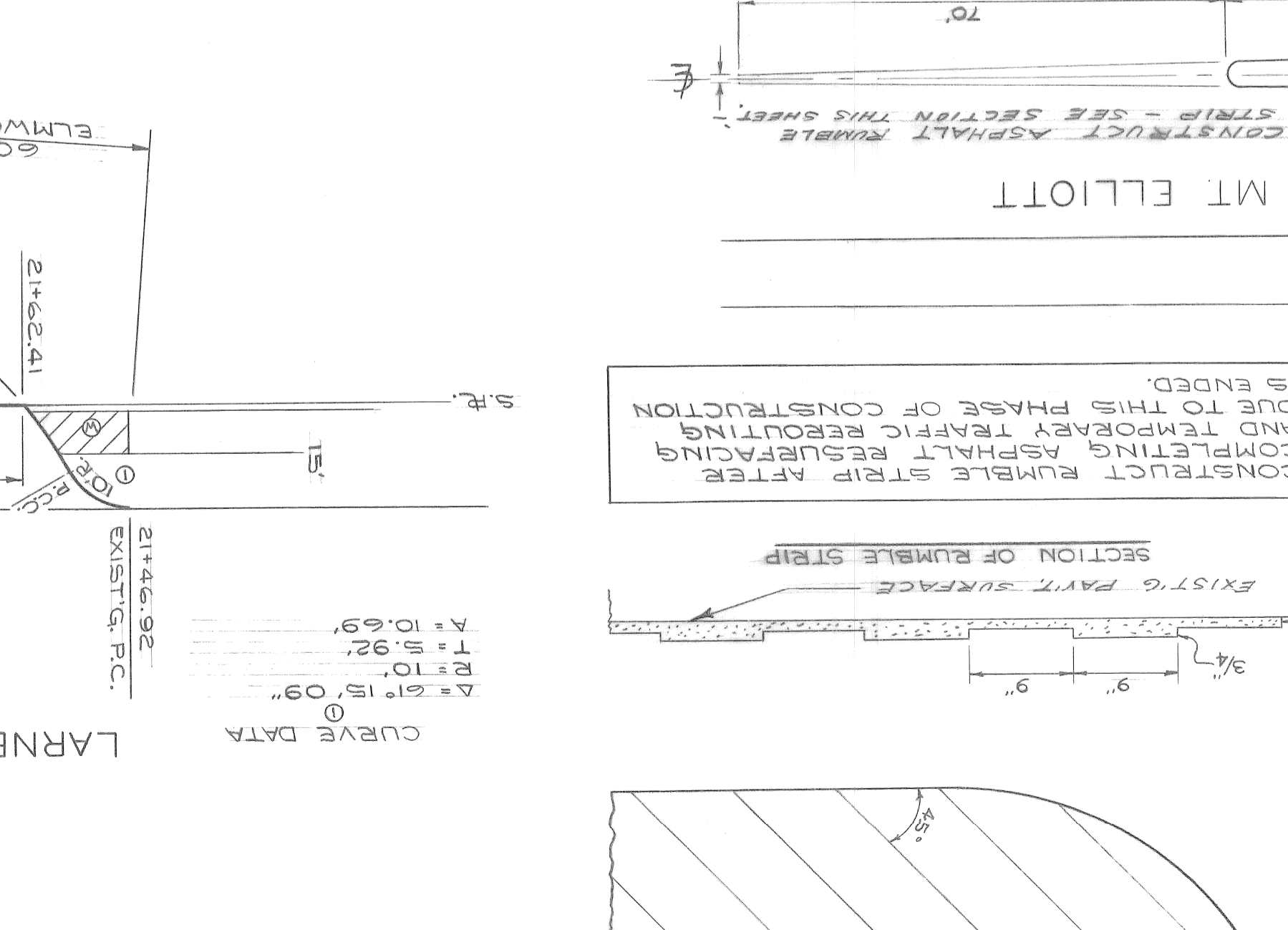
CONSTRUCT RUMBLE STRIP AFTER COMPLETING ASPHALT RESURFACING AND TEMPORARY TRAFFIC ROUTING DUE TO THIS PHASE OF CONSTRUCTION IS ENDED.

EXIST'G PAVT. SURFACE
 SECTION OF RUMBLE STRIP

MONROE

MT ELLIOTT

SCALE 1" = 20'



CITY OF DETROIT
 DEPARTMENT OF PUBLIC WORKS
 CITY ENGINEERS OFFICE
 FOR
 DETROIT HOUSING COMMISSION

REVISIONS

NO.	DATE	DESCRIPTION
1	11/17/70	APPROB. DRIVEWAY @ STA. 21+74.91
2	11/17/70	APPROB. DRIVEWAY @ STA. 21+74.91

BY: C. SHARP
 CHECKED BY: [Signature]
 APPROVED: [Signature]

ENGINEER OF STREETS
 ADMINISTRATIVE ENGINEER
 HEAD CIVIL ENGINEER

PAVING OF MT. ELLIOTT
 JEFFERSON TO MONROE
 ELMWOOD PARK REHABILITATION PROJECT NO. 2 MICH. R-62

PAVING DETAILS

DATE: JUNE 15, 1970
 SHEET 10 OF 13 SHEETS
 CONTRACT NO. PW 5775
 ASSIGNMENT NO. AO 1821
 INDEXED: 48
 TOP NO. 38

