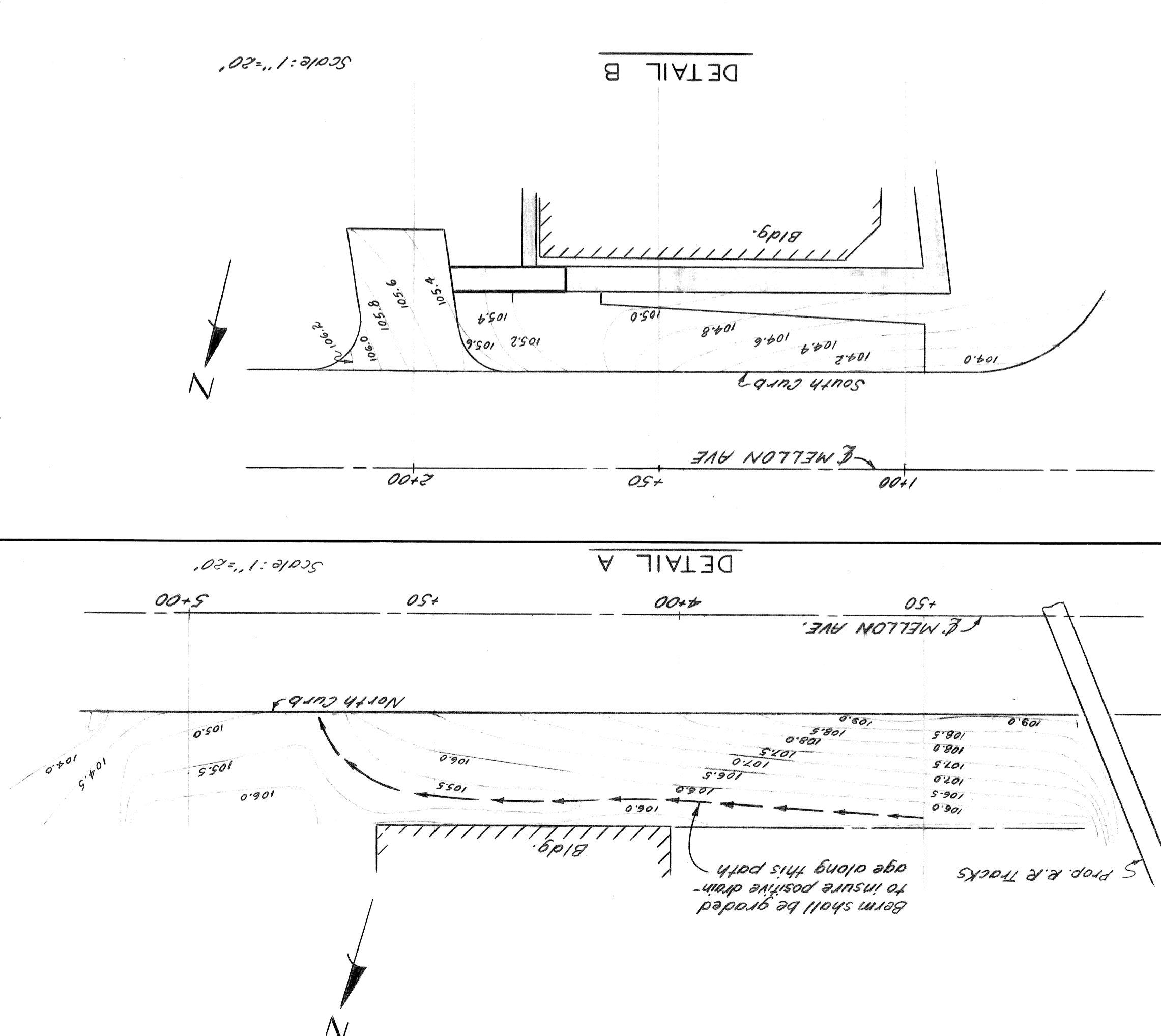
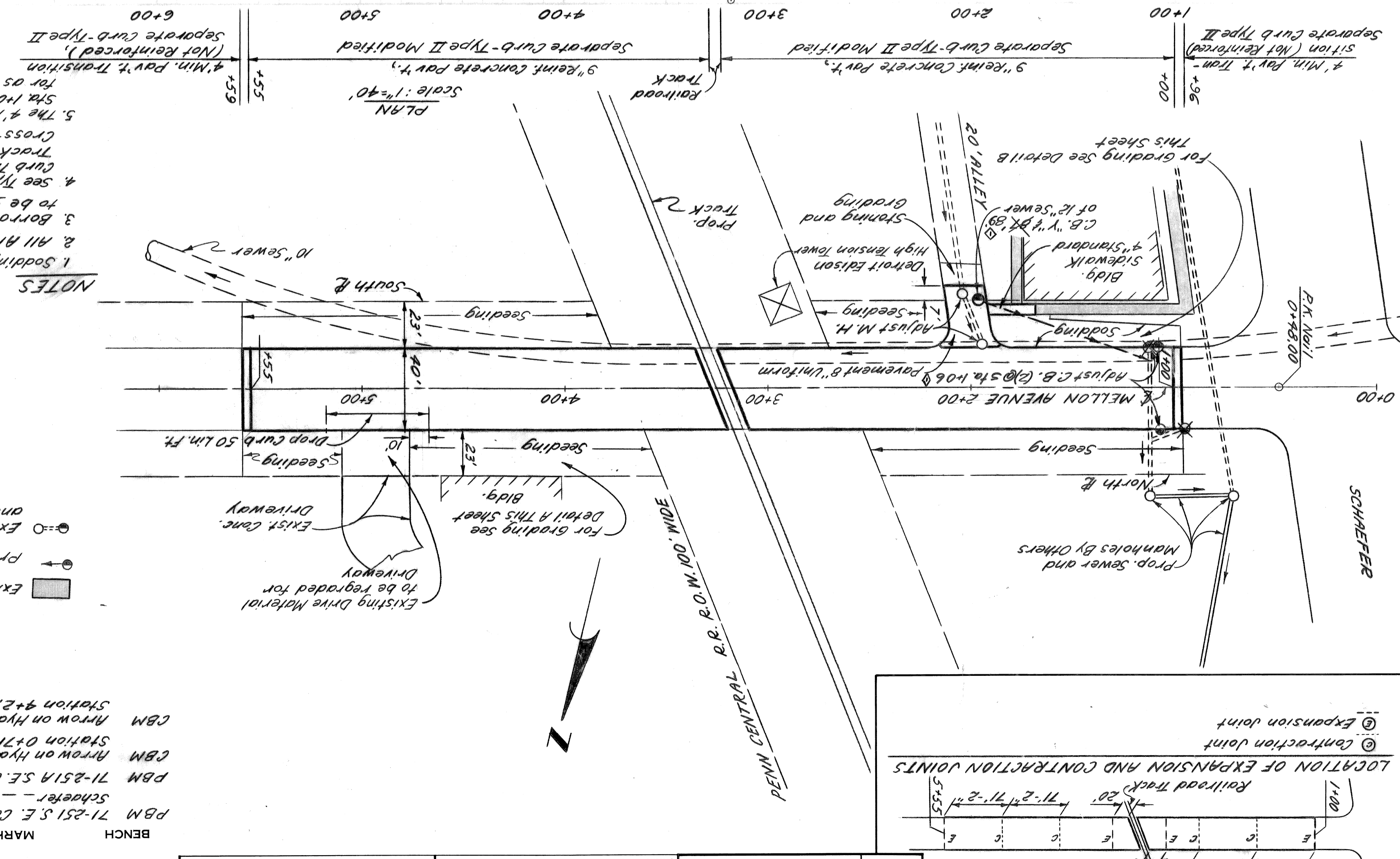
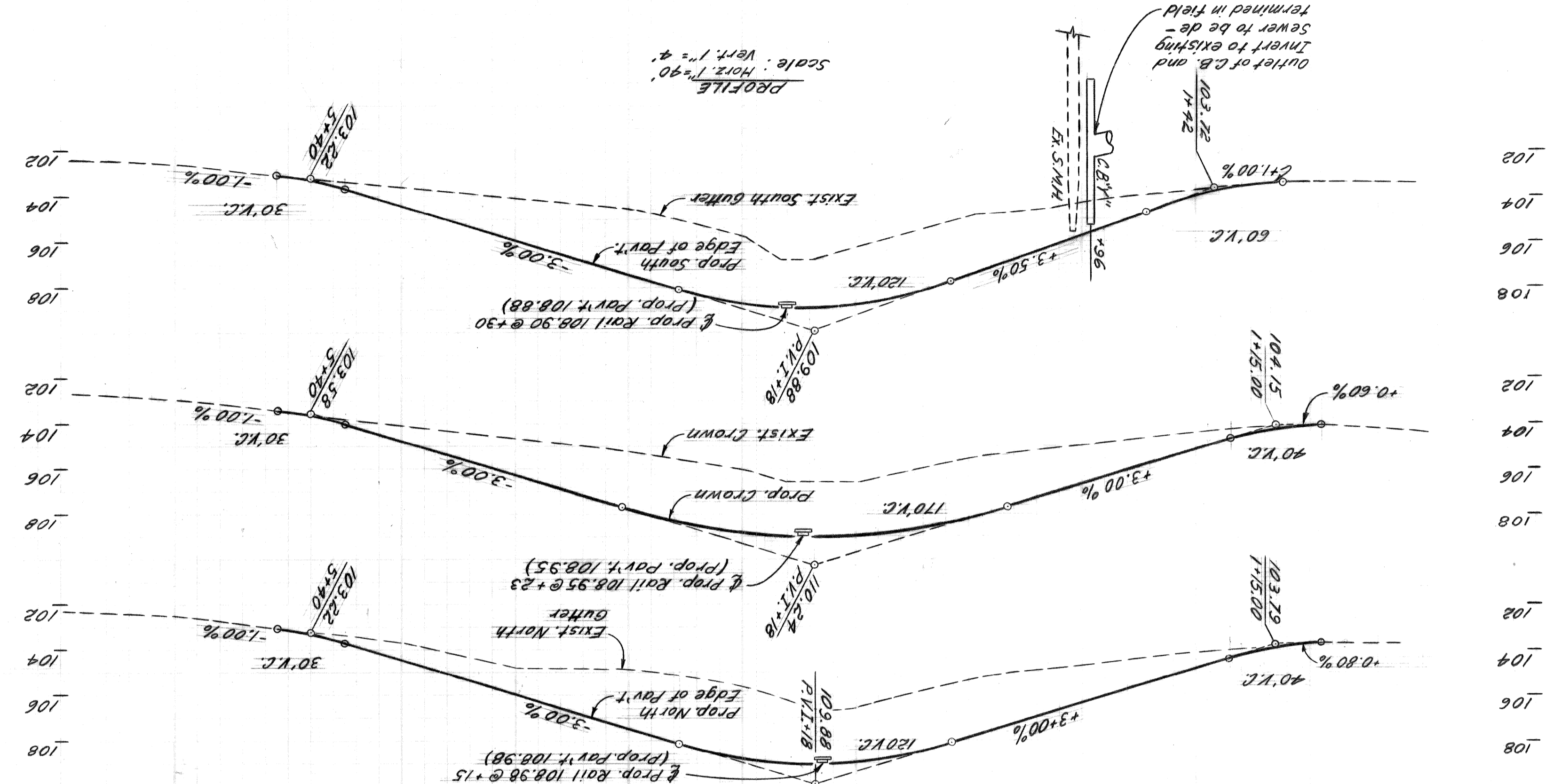


DATE	INDEXED
ASSIGNMENT NO. AO-1864	TOP
CONTR. NO. PW-5772	NO.
SHEET 4 OF 8 SHEETS	INDEX NO.

RECONSTRUCTION OF MELLON AVENUE  
PLAN AND PROFILES

CITY OF DETROIT  
DEPARTMENT OF PUBLIC WORKS  
FOR  
CITY ENGINEERS OFFICE

REVISIONS		DATE	BY	DESCRIPTION
1	Revised by "as built" information	11/28	ML	
2				
3				
4				
5				
6				
7				
8				
9				
10				
11				
12				
13				
14				
15				
16				
17				
18				
19				
20				
21				
22				
23				
24				
25				
26				
27				
28				
29				
30				
31				
32				
33				
34				
35				
36				
37				
38				
39				
40				
41				
42				
43				
44				
45				
46				
47				
48				
49				
50				
51				
52				
53				
54				
55				
56				
57				
58				
59				
60				
61				
62				
63				
64				
65				
66				
67				
68				
69				
70				
71				
72				
73				
74				
75				
76				
77				
78				
79				
80				
81				
82				
83				
84				
85				
86				
87				
88				
89				
90				
91				
92				
93				
94				
95				
96				
97				
98				
99				
100				



**NOTES**

- Sodding is to be placed on 4" of Topsoil
- All Alley Road is 10'
- Borrow Excavation estimated to be 577 cubic yards
- See Typical Cross-sections for Curb Transition at Railroad Track and Typical Track Cross-section
- The 4" Minimum Pav't Transitions at Sta 1+00 and 5+55 are to be paid for as Pav't & Uniform

**LEGEND**

- Existing Drive Material to be Regraded for Driveway
- Prop. Catch Basin & Sewer
- Exist. Catch Basin, Sewer and Manhole

**MARKS**

BENCH  
PBM 71-251 S.E. Corner Mellon and Schaefer 103.09  
PBM 71-251A S.E. Corner Mellon & Lang 101.87  
CBM Arrow on Hydrant South of Mellon 107.65  
CBM Arrow on Hydrant South of Mellon Station 4+27 107.46

**NOTE** - FOR SYMBOLS (A) ETC. SEE STANDARD DETAIL DRAWING NO. C-477  
BEFORE STARTING CONSTRUCTION  
MUST CHECK WITH UTILITIES FOR LOCATIONS OF EXISTING STRUCTURES WHETHER OR NOT INDICATED ON PLANS.  
NO. PG. DATE  
BOOK  
REVISIONS COMPLETED