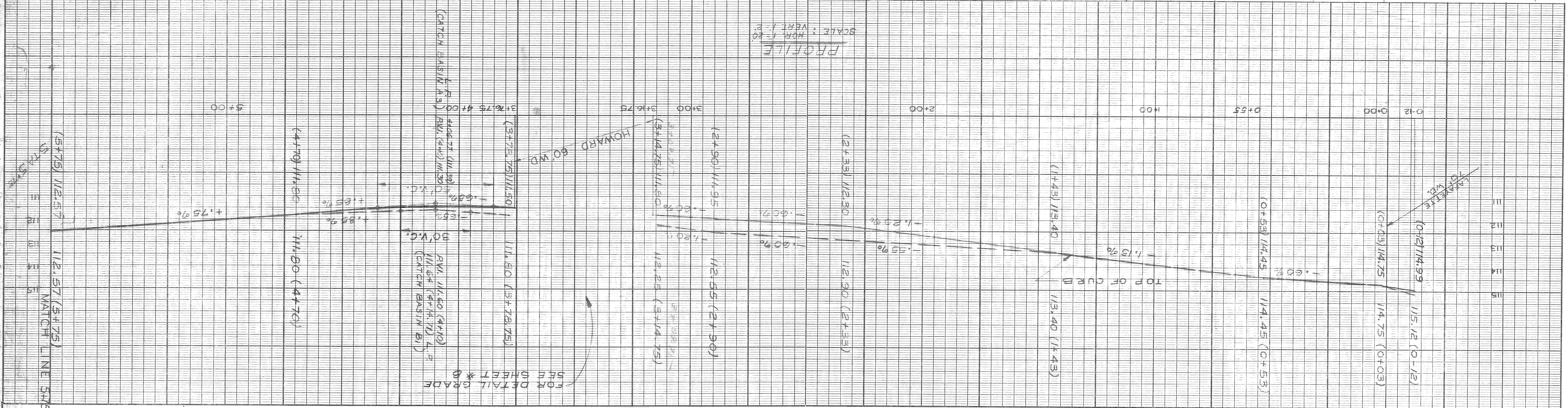


Samuel Harrison
12/12/1973

DESCRIPTION	REVISIONS
ENGINEER OF STREETS	APPROVED
ENGINEER OF EXPRESSWAYS	CHECKED
CITY ENGINEERS OFFICE	DATE
DEPARTMENT OF PUBLIC WORKS	BY
CITY OF DETROIT	DATE
COMMUNITY DEVELOPMENT COMMISSION	ESTIMATE
	GRADE
	PLAN
	REFERENCE
	DRAWING
	DATE

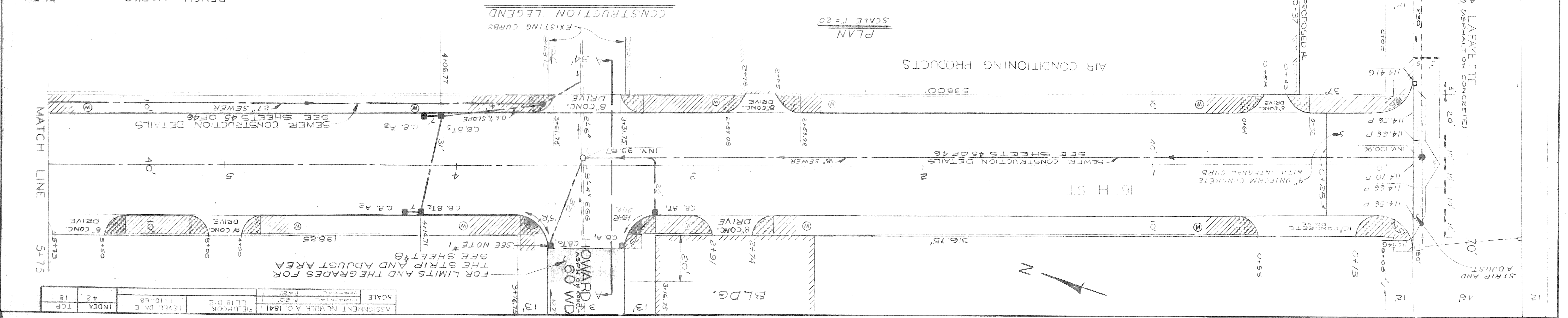
PAVING AND MISCELLANEOUS CONSTRUCTION
SIXTEENTH STREET-LAFAYETTE TO BAGLEY
WEST SIDE INDUSTRIAL REHABILITATION PROJECT NO.2 MICH-R-97
P. W. 5771
SHEET 5 OF 46 SHEETS
ASSIGNMENT NO. 1841
DATE JANUARY 11, 1974



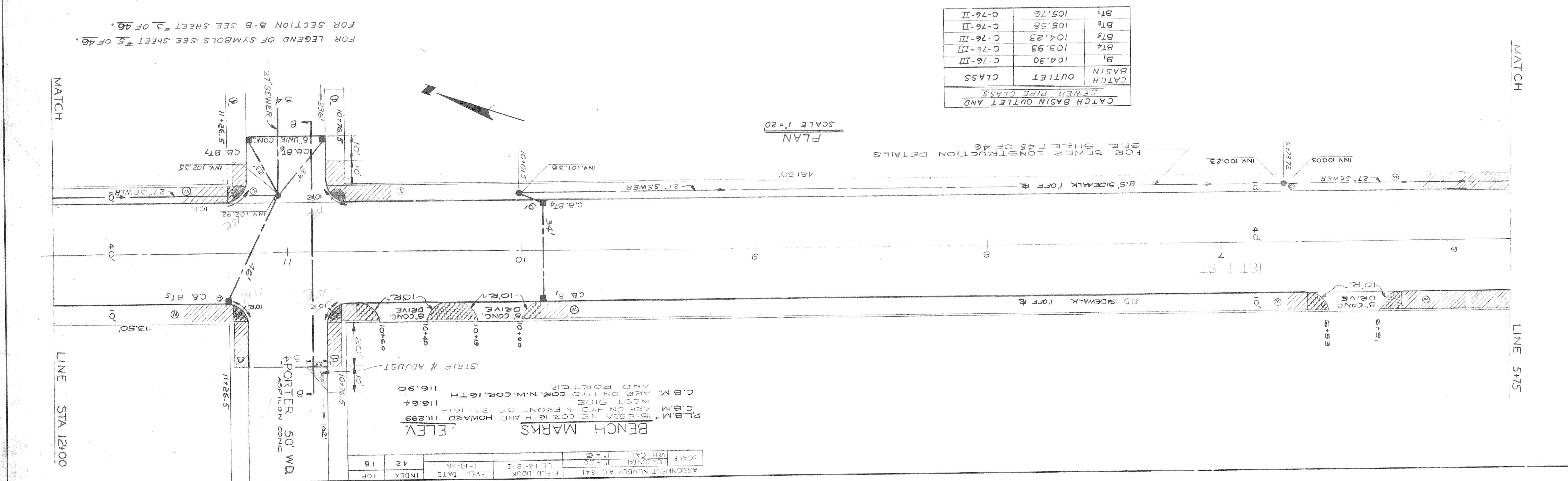
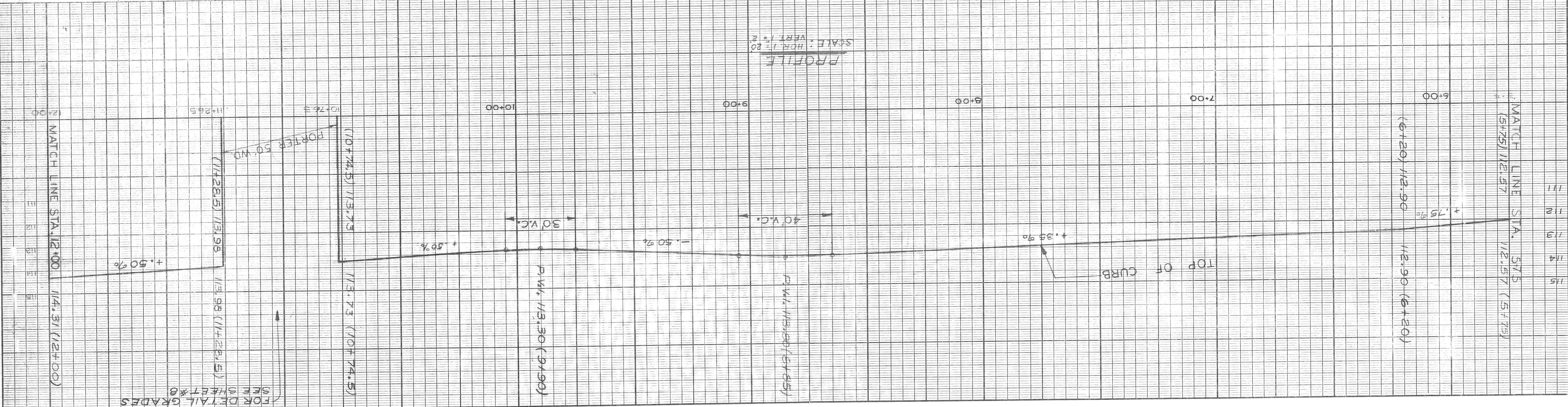
CATCH BASIN	OUTLET	CLASS
A1	107.00	C-76-II
A2	108.00	C-76-II
A3	108.00	C-76-II
B1	100.49	C-76-III
B2	107.70	C-76-II
B3	102.58	C-76-III

NOTES
1. CATCH BASIN "B1" TO BE CONSTRUCTED SO THAT ECCENTRIC CONNECTION TO BE PLACED WITH VERTICAL ON THE NORTH SIDE OF THE CATCH BASIN SO THAT CATCH BASIN MISSES THE DETROIT ELISION STEAM LINE.
2. ALL DRIVEWAY RADIARE 10'.
3. FOR SECTION A-A SEE SHEET # 2 OF 46.

- CONSTRUCTION LEGEND**
- CONSTRUCT STANDARD 4' SIDEWALK
 - CONSTRUCT STANDARD 6' SIDEWALK
 - STRIP AND ADJUST ASPHALT SURFACE
 - PL.B.M. #18-255A N.E. COR. 16TH AND HOWARD
 - C.B.M. ARR. ON HYD. N.W. COR. LAFAYETTE AND 16TH
 - C.B.M. ARR. ON HYD. N.W. COR. HOWARD AND 16TH
- BENCH MARKS**
- ELEV. 111.299
118.10
114.64



ASSIGNMENT NUMBER A.O. 1841	FIELD BOOK	LEVEL DATE	INDEX	TCP
LL 18-B-2	1-10-68	42	18	
SCALE	HORIZONTAL 1"=20'	VERTICAL 1"=8'		



DESCRIPTION REVISIONS

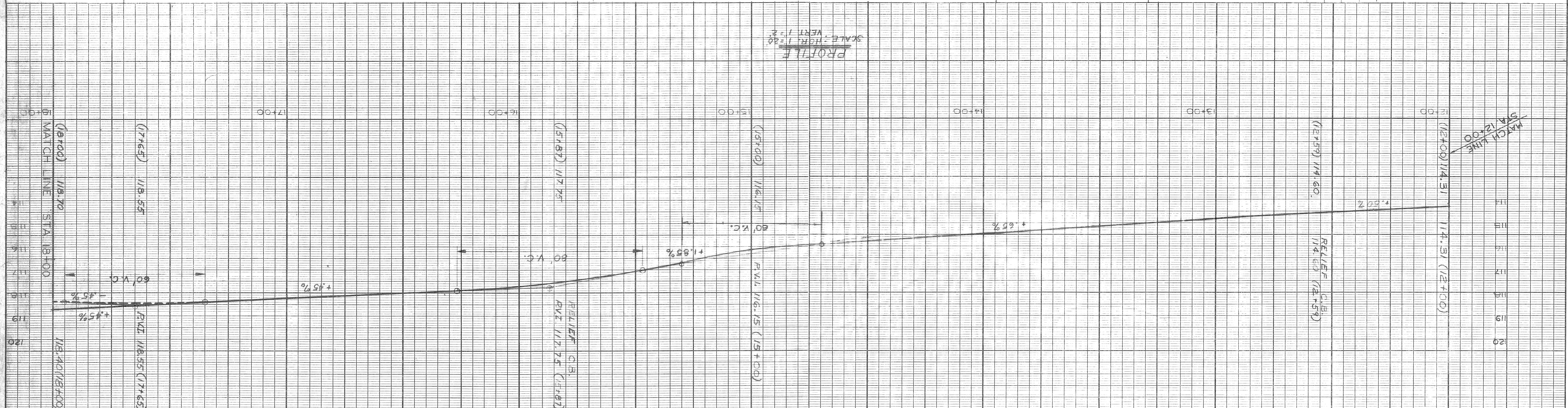
DATE	BY	REVISION
1/11/74	MM	REVISED
1/11/74	MM	REVISED
1/11/74	MM	REVISED
1/11/74	MM	REVISED
1/11/74	MM	REVISED
1/11/74	MM	REVISED
1/11/74	MM	REVISED
1/11/74	MM	REVISED
1/11/74	MM	REVISED

APPROVED: *[Signature]*
 ENGINEER OF STREETS
 CITY OF DETROIT
 ENGINEER OF EXPRESSWAYS
 REVIEW: *[Signature]*

CITY OF DETROIT
 DEPARTMENT OF PUBLIC WORKS
 COMMUNITY DEVELOPMENT COMMISSION

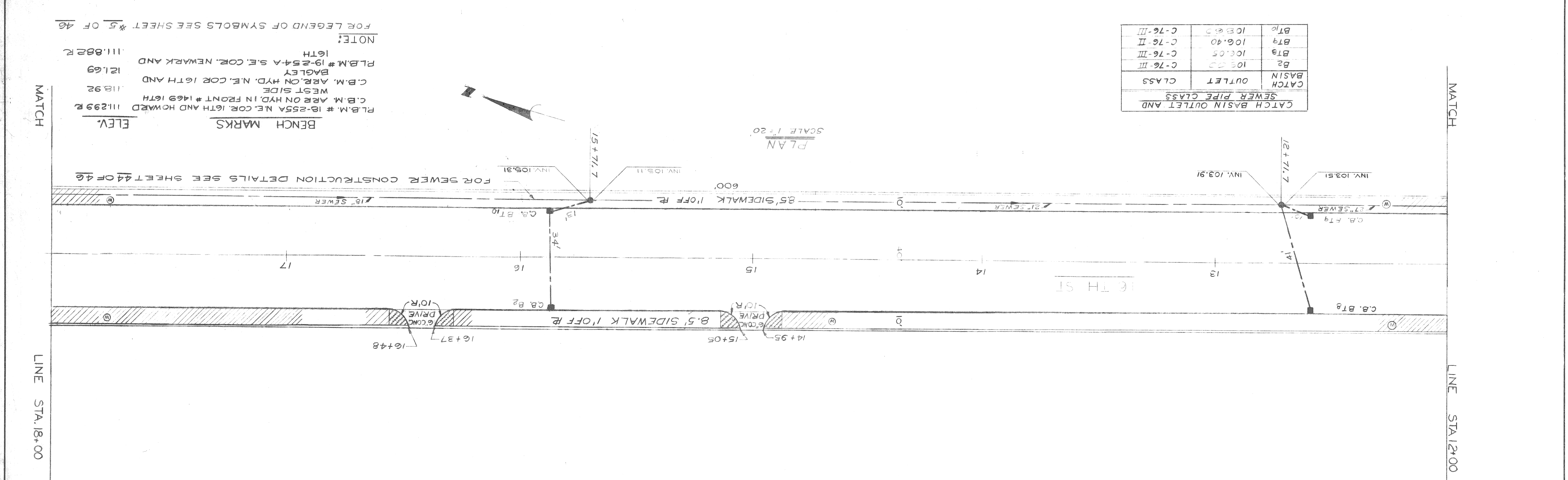
PAVING AND MISCELLANEOUS CONSTRUCTION
 SIXTEENTH STREET-LAFAYETTE TO BAGLEY
 WEST SIDE INDUSTRIAL REHABILITATION PROJECT NO.2 MICH-R-97
 PAVING PLAN FOR SIXTEENTH STREET

DATE JANUARY 11, 1974
 ASSIGNMENT NO. 1841
 P W 5771
 SHEET 7 OF 46 SHEETS



CATCH BASIN	OUTLET	CLASS
B2	103.05	C-76-III
BT9	106.40	C-76-II
BT10	108.05	C-76-III

CATCH BASIN OUTLET AND SEWER PIPE CLASS



BENCH MARKS
 P.L.B.M. # 18-255A NE COR. 16TH AND HOWARD 111299 R
 C.B.M. ARE ON HYD. IN FRONT # 1469 16TH 11892
 WEST SIDE
 C.B.M. ARE ON HYD. N.E. COR. 16TH AND BAGLEY 12169
 P.L.B.M. # 19-254-A S.E. COR. NEWARK AND 16TH 111882 R

ELEV.

NOTE:
 FOR LEGEND OF SYMBOLS SEE SHEET # 5 OF 46

