

CITY OF DETROIT
DEPARTMENT OF PUBLIC WORKS
CITY ENGINEERS OFFICE

PLANS FOR PROPOSED
WIDENING OF DEXTER BOULEVARD
LONGFELLOW TO MONTEREY
FOR



DEPARTMENT OF PUBLIC WORKS



INDEX OF SHEETS

- 1 TITLE SHEET
- 2 QUANTITY SHEET
- 3-5 TYPICAL SECTION & DETAIL
- 6-10 REMOVAL & UTILITY
- 11-18 PAVING PLANS
- 19-21 P.L.C. PLANS

STREET PAVING & P.L.C. STANDARDS ATTACHED

PROJECT: WIDENING OF DEXTER BOULEVARD LONGFELLOW TO MONTEREY	CONTRACT NO. PW 5767-A
PLANS PREPARED BY DEPARTMENT OF PUBLIC WORKS CITY ENGINEERS OFFICE	
RECOMMENDED FOR APPROVAL <i>R.C. Moreson</i> <small>ENGINEER OF INSPECTION</small>	DATE 4/12/68
RECOMMENDED FOR APPROVAL <i>Stephen L. Adams</i> <small>HEAD ENGINEER</small>	DATE 4/11/68
APPROVED <i>R. P. Hecker</i> <small>ASSISTANT CITY ENGINEER</small>	DATE 4-68
APPROVED <i>Edward B. Maranducci</i> <small>CITY ENGINEER</small>	DATE 4-12-68
DATE 3-29-68	DRWG. NO. 1 OF 21

D.C.C. 3-28-68

NO.	REVISIONS LOCATED BY COORDINATES ON SHEET	DESCRIPTION	CITY OF DETROIT		WIDENING OF DEXTER BOULEVARD		LONGFELLOW TO MONTEREY		SHEET 2 OF 2 SHEETS	
			DESIGNED BY	DRAWN BY	TRACED BY	CHECKED BY	CONTRACT NO.	DATE		
1										AO 1837A
2										3-29-68
3										
4										
5										
6										
7										
8										
9										
10										
11										

B. K. ELLIOTT CO.
1441 W. WABASH ST.
CHICAGO, ILL. 60604

APPROVED: *J. Erickson*
ENGINEER OF STREETS
W. J. Samuel
ADMINISTRATIVE ENGINEER
W. O. Krawinkel
HEAD CIVIL ENGINEER

DESIGNED BY: *E. J. Johnson*
DRAWN BY: *E. J. Johnson*
TRACED BY: *W. O. Krawinkel*
CHECKED BY: *W. O. Krawinkel*

40 C. 3-25-67

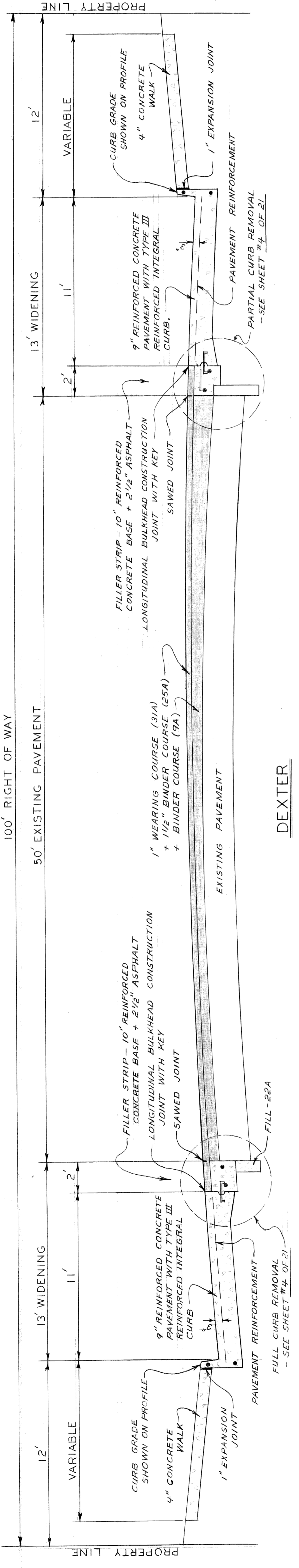
DESCRIPTION OF ITEM	PAY UNIT	QTY.	UNIT PRICE	TOTAL	QTY.	UNIT PRICE	TOTAL	QTY.	UNIT PRICE	TOTAL	QTY.	UNIT PRICE	TOTAL
Excavation	Cyds.	441	4.07	1,805	328	1.909	626	35	1.904	666	35	1.904	666
Street Pavement Removal	Syds.												
Cable and Wood Posts Removal	Lft.												
Relocate Pipe Rail Fence	Lft.												
Relocate 4 ft. Chain Link Fence	Lft.												
Driveway Removal	Sft.	2,713	3.45	9,360	4,535	11.68	52,900	15,412	1.5412	23,750	98,160	1.5412	151,910
Sidewalk Removal	Sft.	5,220	14.57	75,900	2,271	13.62	30,900	368	3.68	1,350	1,350	3.68	4,980
Fill - (Grade A)	Cyds.	61	3.7	227	41	3.5	143	153	1.53	234	153	1.53	234
Fill (25A)	Cyds.	8	9	72	10	1.0	10						
Tree Removal 4" - 12" Dia.	Bach.	1			4								
Tree Removal 13" - 18" Dia.	Bach.	1											
Tree Removal 21" Dia.	Bach.	1											
Tree Removal 24" Dia.	Bach.	1											
Tree Removal 30" Dia.	Bach.	1											
Tree Removal 36" Dia.	Bach.	1											
Separate Type Curb Removal	Lft.	413	4.84	2,000	803	4.82	3,870	3,891	3.891	15,100	3,891	3.891	15,100
Partial Curb Removal	Lft.	666	7.42	4,940	266	7.36	1,957	3,834	3.834	14,600	3,834	3.834	14,600
Reestling Manhole - Water	Bach.	1	2	2	2	2	4	9	9	20	9	20	20
Reestling Manhole - Sewer	Bach.	2	4	8	3	3	9	18	18	3	3	9	9
Reestling Stop Boxes	Bach.	2	2	4	2	2	4	15	15	1	1	1	1
Reestling Catch Basins - All Types	Bach.	1	3	3	3	3	9	15	15	1	1	1	1
Rebuild Catch Basin	Bach.	1	1	1	1	1	5	5	5	1	1	1	1
Manhole (Sewer) - Adjustment	Bach.	1	1	1	1	1	7	7	7	1	1	1	1
Manhole (Water) - Adjustment	Bach.	1	1	1	1	1	7	7	7	1	1	1	1
Manhole - Reconstruct Cone	Bach.	1	1	1	1	1	1	1	1	1	1	1	1
Manhole - Standard, New	Bach.	1	1	1	1	1	1	1	1	1	1	1	1
Manhole - Special, Type I (Trapped)	Bach.	1	1	1	1	1	1	1	1	1	1	1	1
Manhole - Special, Type II (Not Trapped)	Bach.	3	2	6	1	1	3	10	10	1	1	1	1
Catch Basin - New	Bach.	4	5	20	4	4	16	34	34	1	1	1	1
Catch Basin - Abandonment	Bach.	1	1	1	1	1	1	3	3	1	1	1	1
Catch Basin - Special Abandonment	Bach.	2	4	8	3	3	9	25	25	1,300	1,300	1,300	1,300
Sewers - 12" Extra Strength Concrete Pipe or Reinforced Concrete Pipe, C-76, IV	Lft.	90	1.5	135	100	1.40	140	1,300	1,300	360	360	360	360
Seewer Under Pavement - 12" Extra Strength Clay Pipe or Reinforced Concrete Pipe, C-76, IV	Lft.	40	4.0	160	50	5.0	250	360	360				
Pavement Base - 9" Uniform Reinforced* (HESC)	Syds.	579	1.14	659	1,033	989	1,015	2,120	2,120	6875	6875	6875	6875
Pavement Base - 10" Uniform Reinforced* (HESC)	Syds.	629	2.56	1,611	256	156	209	1,954	1,954				
Pavement Reinforced*** (HESC)	Syds.	101	1.84	186	172	184	202	1,986	1,986	4,248	4,248	4,248	4,248
Clean and Condition Existing Surface	Syds.	261	4.30	1,124	448	671	819	4,248	4,248	190	190	190	190
Striping	Syds.	20	70	1,400	20	20	280	280	280				
Separate Curb - Type II	Lft.	38	3.8	144	4	4	16	280	280				
Test Cores	Bach.	2	4	8	3	3	12	25	25				
Sidewalks 4" Standard**	Sft.	5,710	9.61	54,700	9,795	9,888	9,660	93,935	93,935	6,395	6,395	6,395	6,395
Top Soil	Cyds.	6	5	30	5	5	25	118	118	103	103	103	103
Soading	Syds.	99	63	6,237				192	192				
Driveways 6" Standard (HESC)	Sft.	1,243	1.66	2,063	958	801	2,264	740	740	1,500	1,500	1,500	1,500
Maintaining Traffic	Lump Sum	1	594	594	594	594	594	4,119	4,119				
Bond Coat in Place	Gals.	594	594	594	594	594	594	4,119	4,119				
Sawed Joint (IM Asphalt Surface)	Lft.	915	908	834	914	950	793	6,202	6,202				
Sheet Asphalt	Tons	2	1	2	1	1	1	10	10				
Resurfacing Mixtures in Place (All Natural Aggregates)	Tons	837	775	487	465	1,048	704	5,174	5,174				
a) Binder Course Mixture-9A	Tons	837	775	487	465	1,048	704	5,174	5,174				
b) Fine Binder Course Mixture	Tons	335	324	327	342	326	320	2,439	2,439				
c) Wearing Surface Mix 31A	Tons	223	216	226	195	219	213	1,626	1,626				
Resurfacing Mixtures in Place (All Sing Aggregates)	Tons	761	699	448	420	945	635	4,666	4,666				
a) Binder Course Mixture-9A	Tons	761	699	448	420	945	635	4,666	4,666				
b) Fine Binder Course Mixture	Tons	307	300	314	266	301	293	2,237	2,237				
c) Wearing Surface Mix 31A	Tons	210	204	215	184	207	201	1,535	1,535				

* Included Reinforced Integral Curbs, See Sta. Drawing C-1943
** Construction Only
*** No Curb

WIDENING OF DEXTER BOULEVARD
LONGFELLOW TO MONTEREY

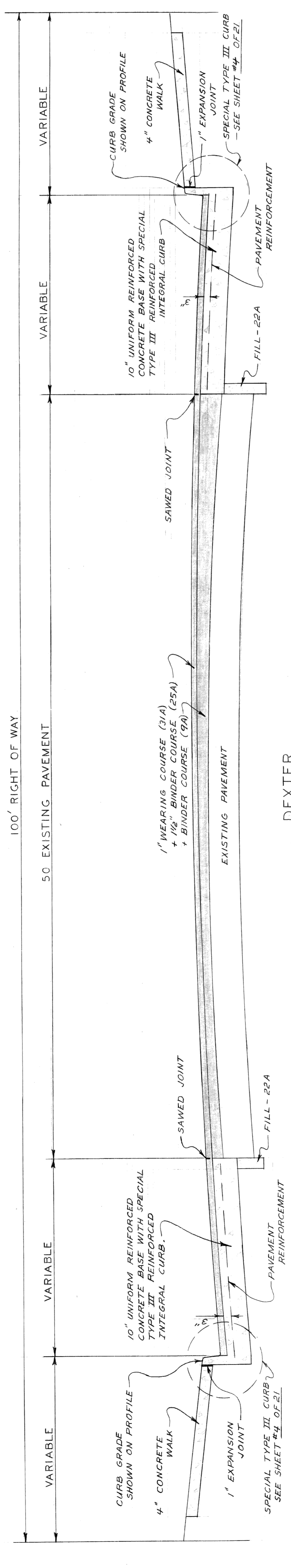
CITY OF DETROIT
DEPARTMENT OF PUBLIC WORKS
CITY ENGINEERS OFFICE

QUANTITY SHEET



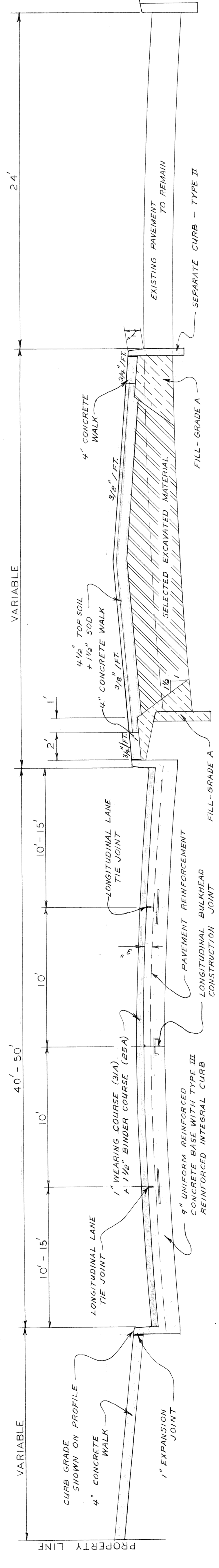
DEXTER

BETWEEN INTERSECTIONS



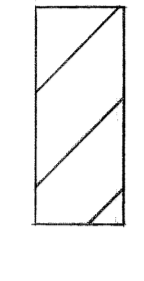
DEXTER

AT INTERSECTIONS AND FROM LONGFELLOW TO CHICAGO

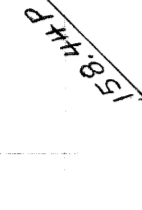


CHICAGO

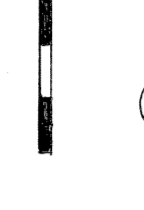
CONSTRUCTION LEGEND



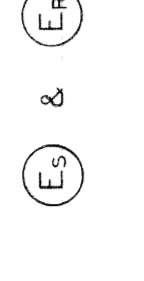
10" REINFORCED CONCRETE BASE + 2 1/2" ASPHALT



PROPOSED PAVEMENT ELEVATION



SEPARATE CURB - TYPE II



SPECIAL CATCH BASIN ABANDONMENTS - SEE SHEET #5.



SPECIAL MANHOLE - TYPE I - SEE SHEET #5.



SPECIAL MANHOLE - TYPE II - SEE SHEET #5.



RESET CATCH BASIN



RESET MANHOLE



MAINTAIN ONE-HALF OF DRIVEWAY FOR USE AT ALL TIMES



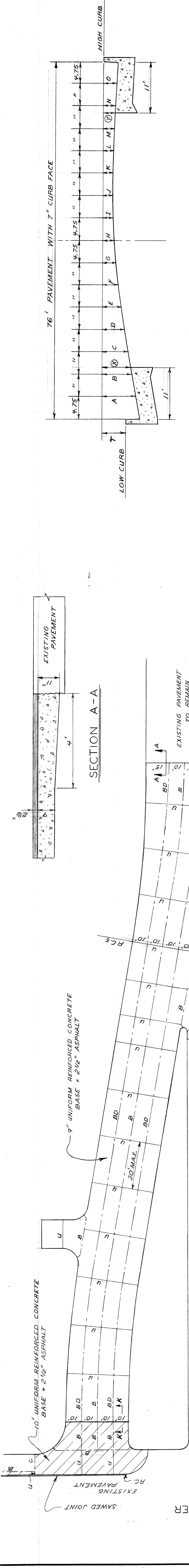
MAINTAIN THE FULL-WIDTH OF DRIVEWAY FOR USE AT ALL TIMES

FOR STANDARD SYMBOLS SEE STANDARD DETAIL DRAWINGS C-4378 & C-902-A

TYPICAL CROSS-SECTIONS

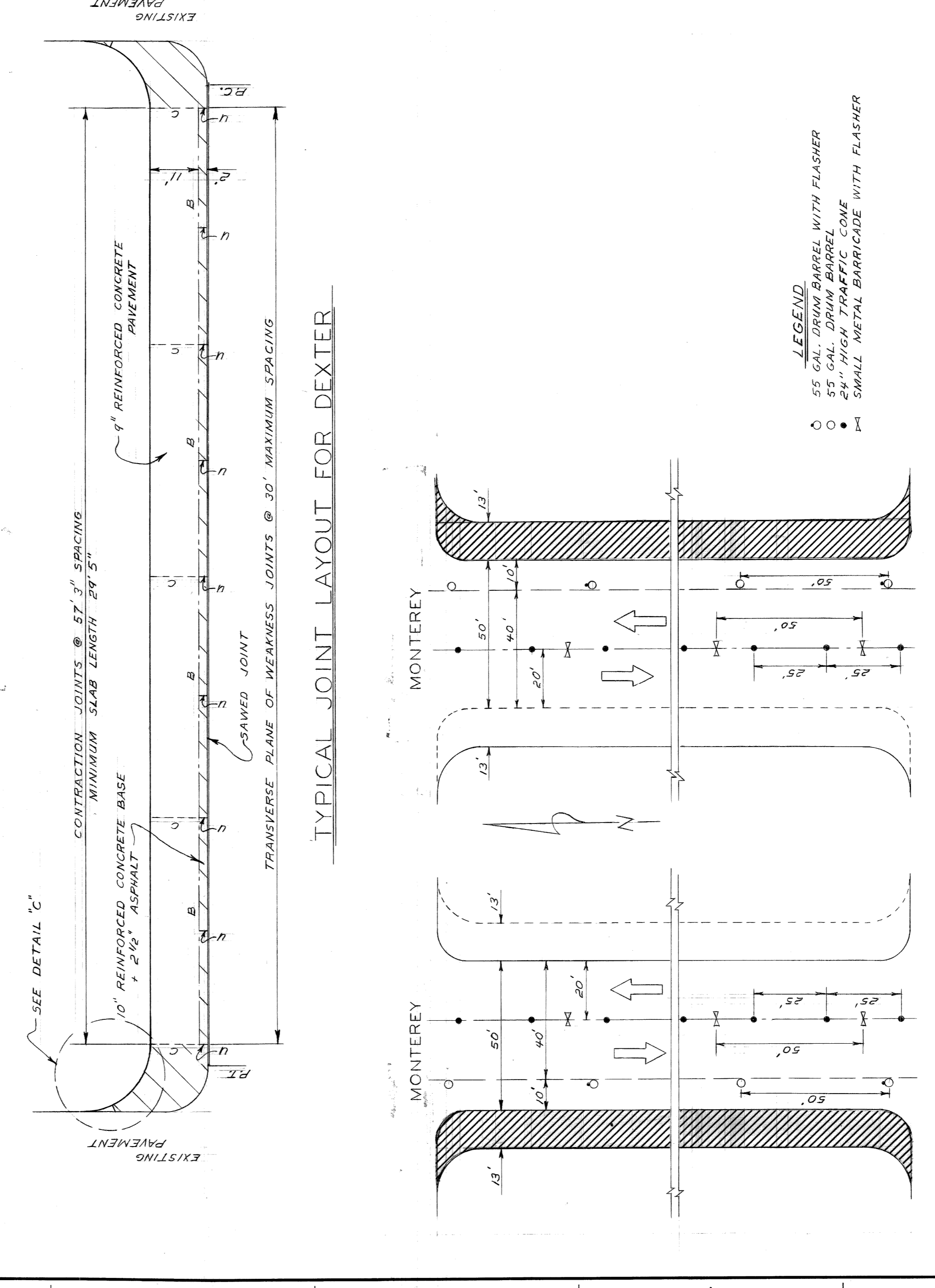
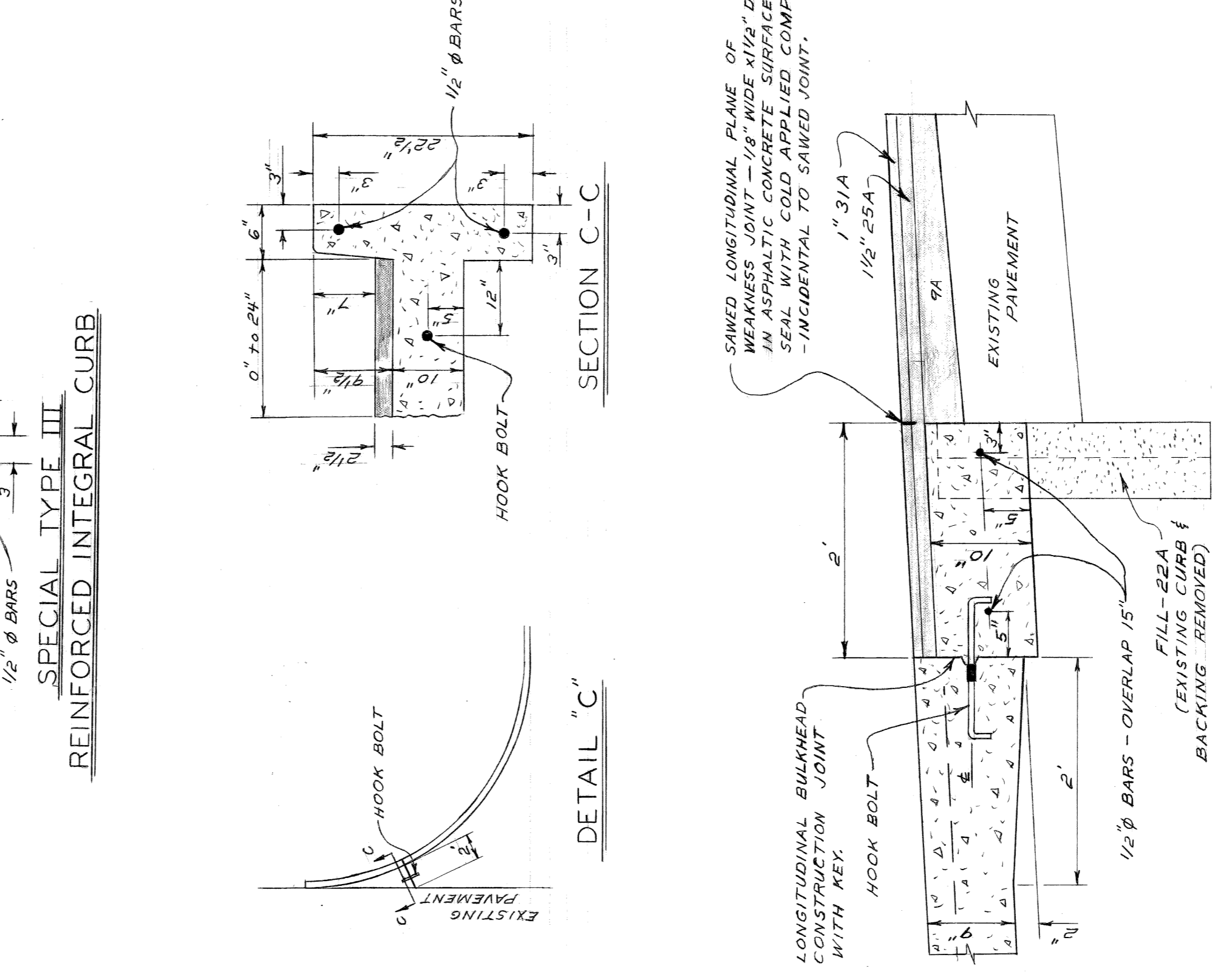
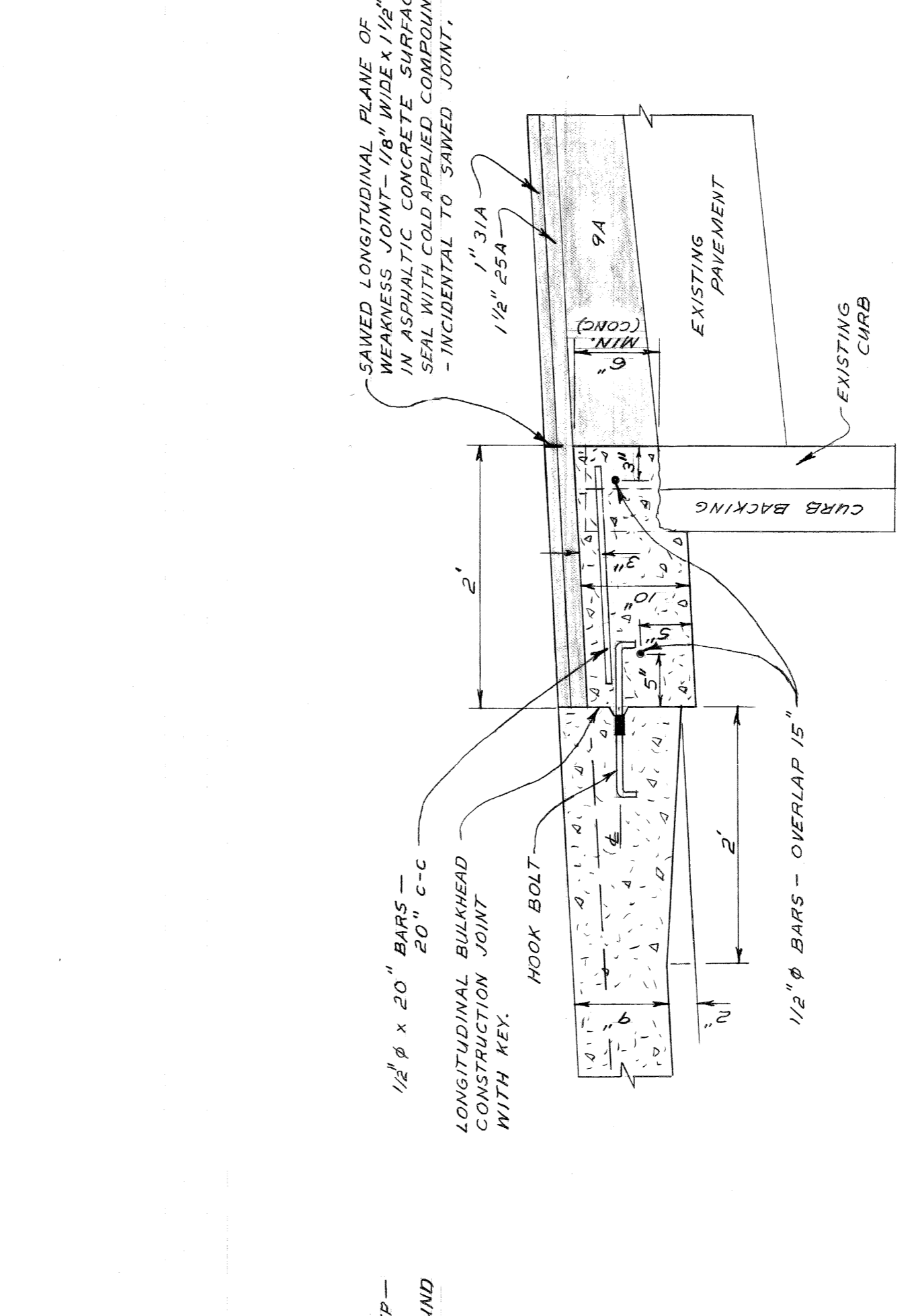
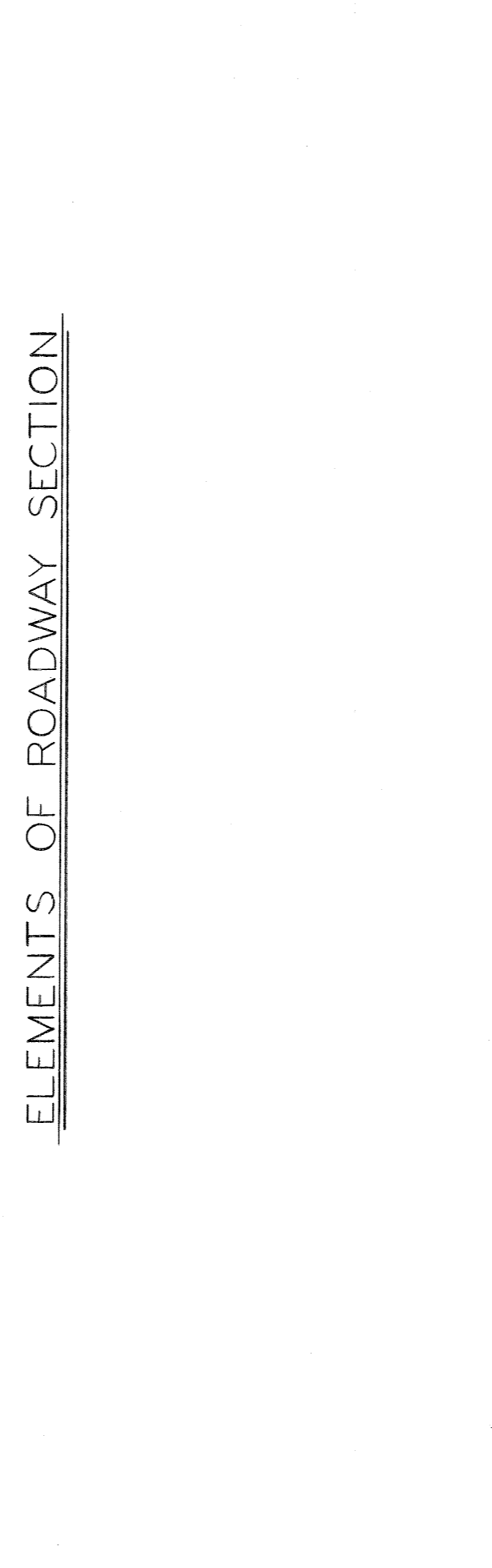
NO SCALE

DESIGNED BY W. OWENS		APPROVED: J. Erickson ENGINEER OF STREETS		SHEET 3 OF 21 SHEETS	
DRAWN BY SEWERS		W. R. Seay CONSULTATIVE ENGINEER		CONTRACT PW 5767-A	
APPROVED W. O. Seay HEAD CIVIL ENGINEER		FOR		A.O. 1837A	
CHECKED BY W. O. Seay		CITY OF DETROIT DEPARTMENT OF PUBLIC WORKS CITY ENGINEERS OFFICE		DATE 3-29-68	
DESCRIPTION REVISIONS		WIDENING OF DEXTER BOULEVARD LONGFELLOW TO MONTEREY		TYPICAL CROSS-SECTIONS & CONSTRUCTION LEGEND	



ELEMENTS OF ROADWAY SECTION

T	A	B	C	D	E	F	G	H	I	J	K	L	M	N	O	CROWN	
0	.44	.32	.29	.22	.14	.07	.03	.00	1.01	.00	.03	.07	.14	.22	.29	.32	.44
1	.53	.40	.36	.29	.20	.13	.08	.05	.04	.05	.07	.12	.18	.25	.31	.35	.46
2	.62	.48	.44	.36	.26	.19	.10	.09	.10	.12	.16	.21	.28	.34	.37	.47	.47
3	.71	.56	.52	.43	.33	.24	.19	.15	.14	.15	.17	.20	.25	.31	.36	.39	.48
4	.81	.67	.62	.54	.43	.34	.27	.22	.19	.18	.19	.21	.25	.31	.36	.39	.48
5	.92	.77	.72	.64	.52	.42	.35	.28	.24	.21	.20	.21	.25	.30	.35	.37	.47
6	1.01	.85	.80	.71	.59	.49	.40	.34	.29	.26	.25	.26	.29	.34	.38	.40	.48
7	1.11	.95	.90	.80	.68	.57	.47	.40	.34	.30	.27	.26	.28	.31	.36	.38	.47
8	1.20	1.04	.99	.89	.76	.65	.54	.46	.39	.34	.30	.28	.27	.29	.32	.34	.44
9	1.30	1.12	1.07	.97	.83	.71	.60	.51	.44	.38	.34	.32	.31	.33	.36	.38	.48
10	1.39	1.21	1.15	1.04	.90	.77	.66	.57	.49	.43	.39	.36	.35	.37	.37	.41	.48



CONSTRUCTION STAGES & PAVEMENT DETAILS

STAGE	DESCRIPTION	REVISIONS
1		
2		
3		
4		
5		
6		
7		
8		
9		
10		
11		

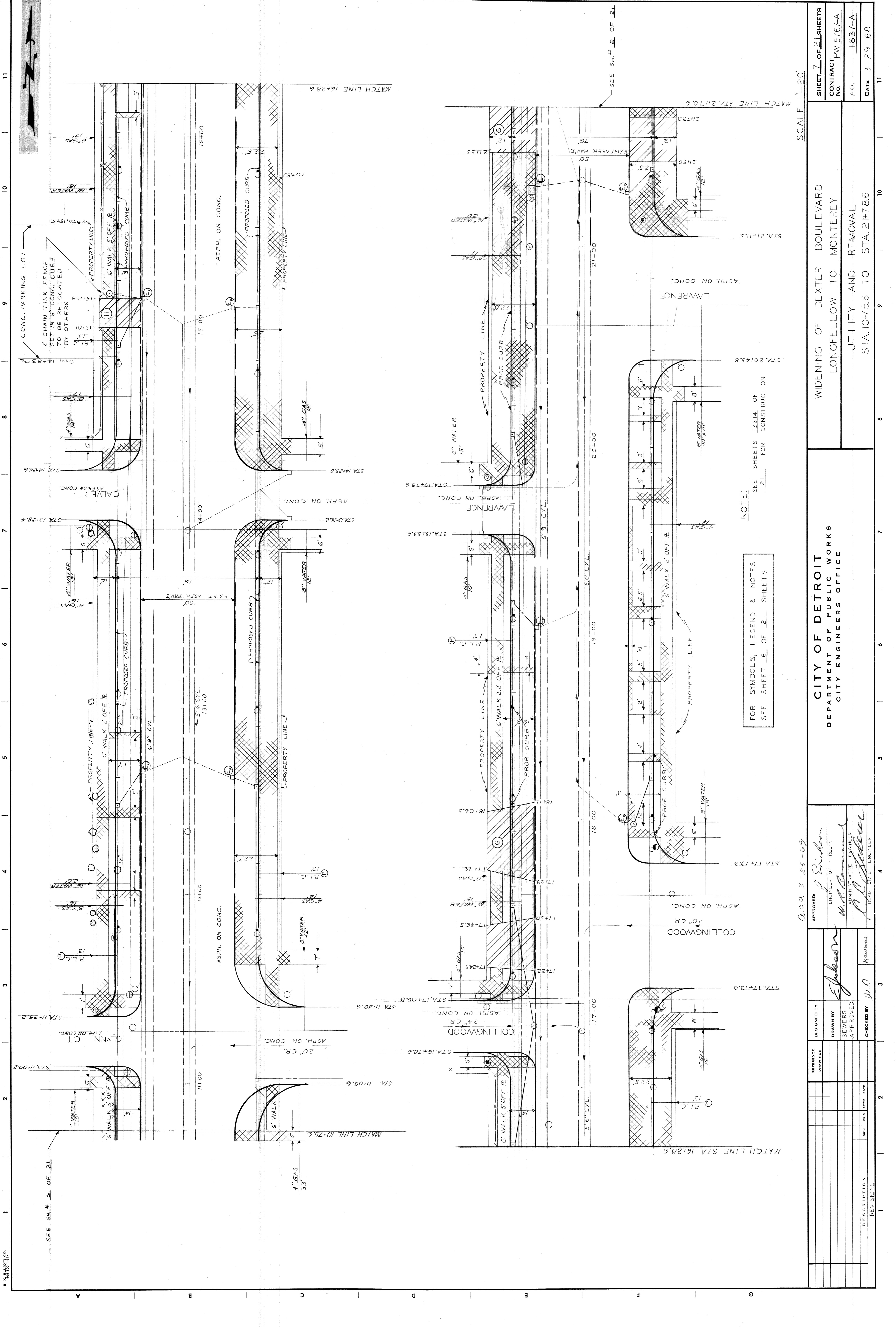
CITY OF DETROIT
 DEPARTMENT OF PUBLIC WORKS
 CITY ENGINEERS OFFICE

APPROVED: *W. O. Owens*
 ENGINEER OF STREETS

DESIGNED BY: *W. O. Owens*
 DRAWN BY: *T. Seymour*
 SEWERS APPROVED: *W. O. Owens*
 CHECKED BY: *W. O. Owens*

CONTRACT NO. PW 5767-A
 A.O. 1847A
 DATE 3-29-68

NO SCALE



SEE SH. # 2 OF 2L

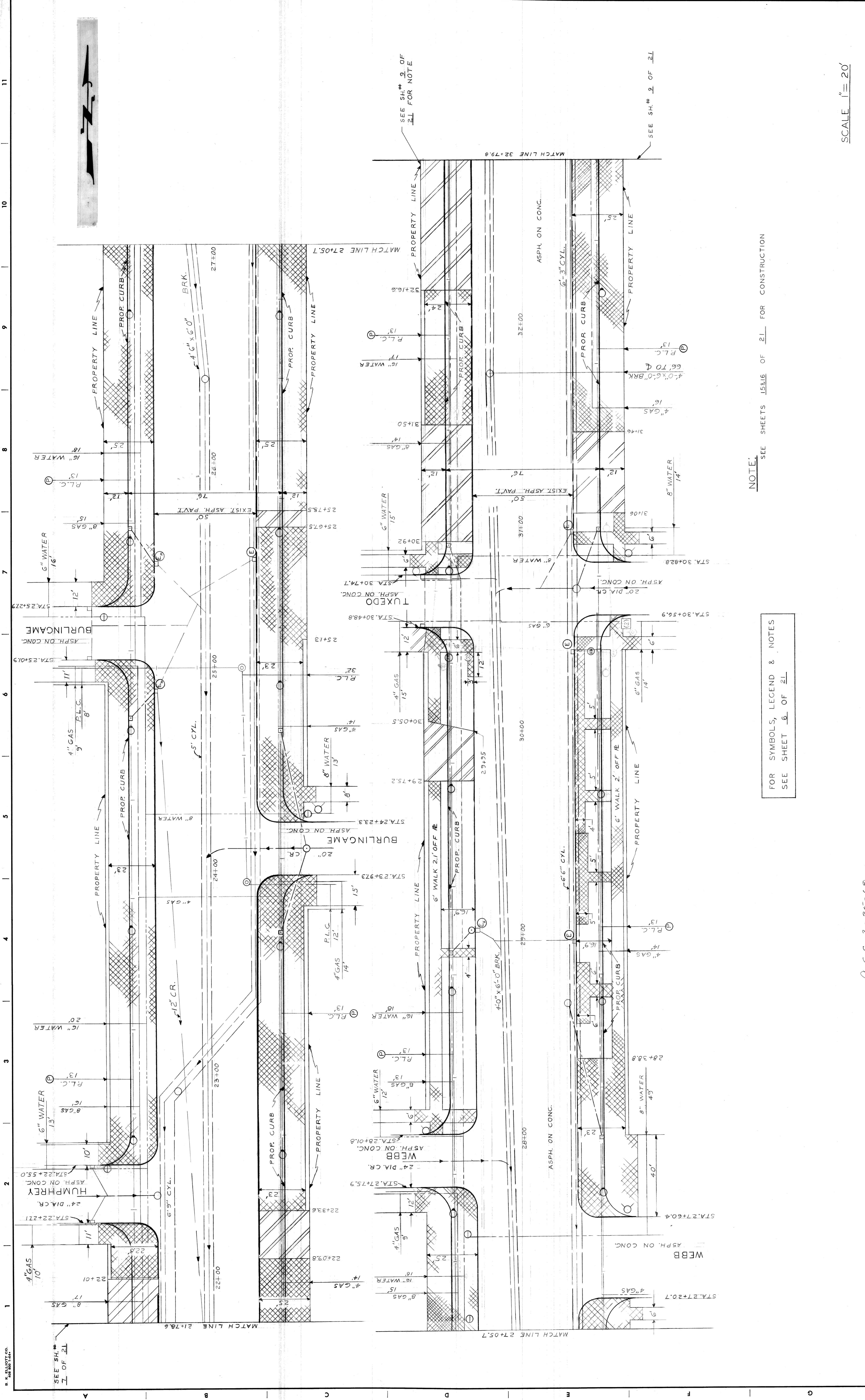
NOTE:
FOR SYMBOLS, LEGEND & NOTES
SEE SHEET 6 OF 2L SHEETS

NOTE:
SEE SHEETS 13&14 OF
2L FOR CONSTRUCTION

SCALE 1"=20'

CITY OF DETROIT DEPARTMENT OF PUBLIC WORKS CITY ENGINEERS OFFICE	WIDENING OF DEXTER BOULEVARD LONGFELLOW TO MONTEREY		SHEET 7 OF 2L SHEETS CONTRACT NO. PW 5767A A.O. 1837-A DATE 3-29-68
	APPROVED: <i>J. Dickson</i> ENGINEER OF STREETS ADMINISTRATIVE ENGINEER <i>W. O. Korman</i> HEAD CIVIL ENGINEER		UTILITY AND REMOVAL STA. 10+75.6 TO STA. 21+78.6
DESIGNED BY: <i>J. Dickson</i> DRAWN BY: <i>J. Dickson</i> SEWERS APPROVED: <i>J. Dickson</i> CHECKED BY: W.O. Korman	REFERENCE DRAWINGS:	REVISIONS:	DATE:

A.O. 3-25-69



SCALE 1" = 20'

NOTE: SEE SHEETS 15&16 OF 21 FOR CONSTRUCTION

FOR SYMBOLS, LEGEND & NOTES SEE SHEET 6 OF 21

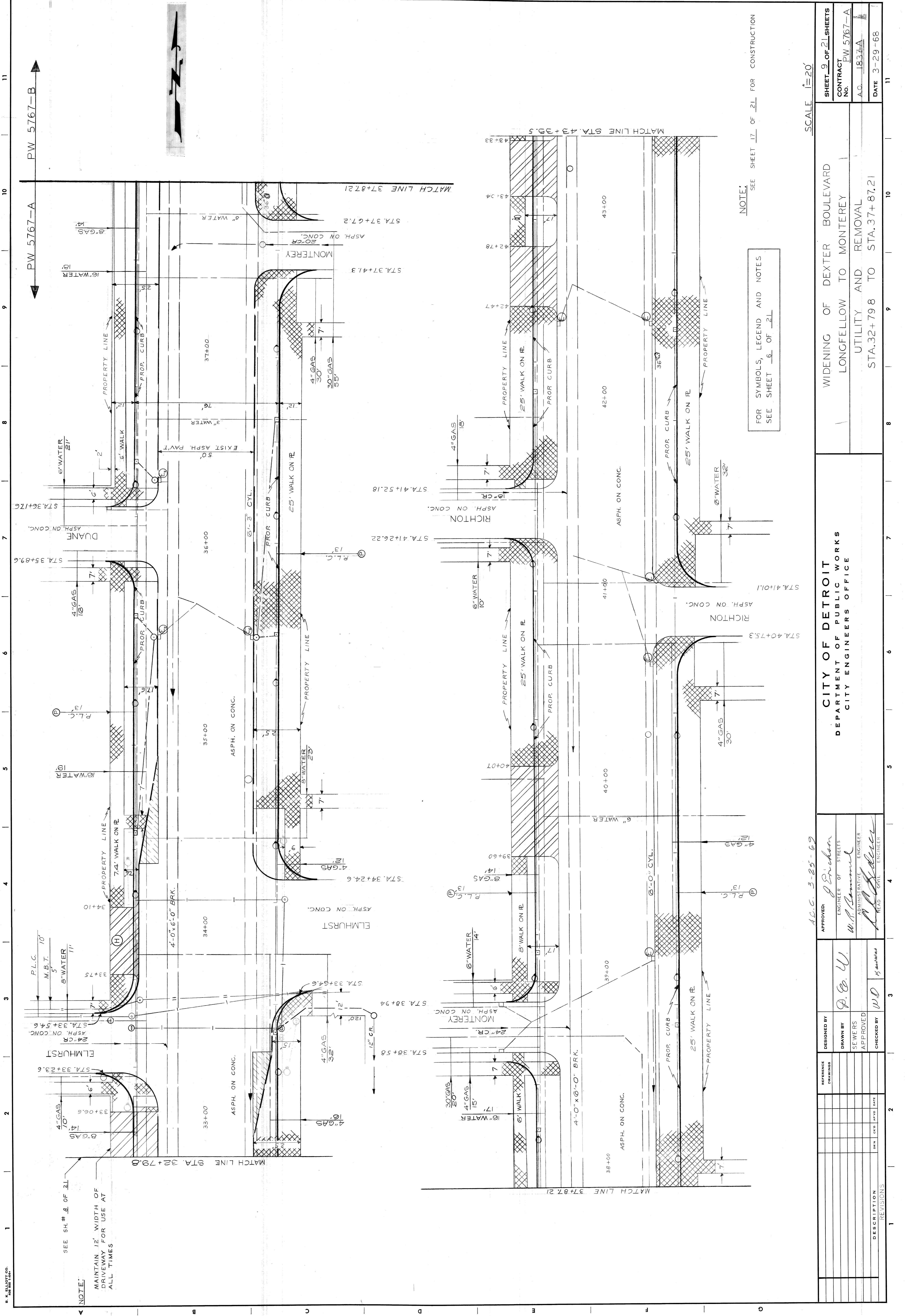
B. K. ELLIOTT CO.
 200 W. WASHINGTON ST.
 DETROIT, MICH. 48226

SEE SH. # 2 OF 21

SEE SH. # 2 OF 21 FOR NOTE

SEE SH. # 2 OF 21

SHEET 8 OF 21 SHEETS CONTRACT PW 5767-A NO. 1837-A DATE 3-29-68	
WIDENING OF DEXTER BOULEVARD LONGFELLOW TO MONTEREY UTILITY AND REMOVAL STA. 21+78.6 TO STA. 32+79.8	
CITY OF DETROIT DEPARTMENT OF PUBLIC WORKS CITY ENGINEERS OFFICE	
APPROVED: <i>W. H. Samuel</i> ENGINEER OF STREETS ADMINISTRATIVE ENGINEER	DESIGNED BY F. ALLGOOD
DRAWN BY SEWERS APPROVED CHECKED BY W.D. K...	REFERENCE DRAWINGS
DESCRIPTION REVISIONS	1 2 3 4 5 6 7 8 9 10 11



NOTE:
 SEE SH. # 6 OF 21
 MAINTAIN 12' WIDTH OF DRIVEWAY FOR USE AT ALL TIMES

NOTE:
 FOR SYMBOLS, LEGEND AND NOTES SEE SHEET 6 OF 21

NOTE:
 SEE SHEET 17 OF 21 FOR CONSTRUCTION

NO.	DATE	DESCRIPTION

DESIGNED BY
 DRAWN BY
 SEWERS APPROVED
 CHECKED BY

REFERENCE DRAWINGS

APPROVED:
 ENGINEER OF STREETS
 ADMINISTRATIVE ENGINEER
 READ CIVIL ENGINEER

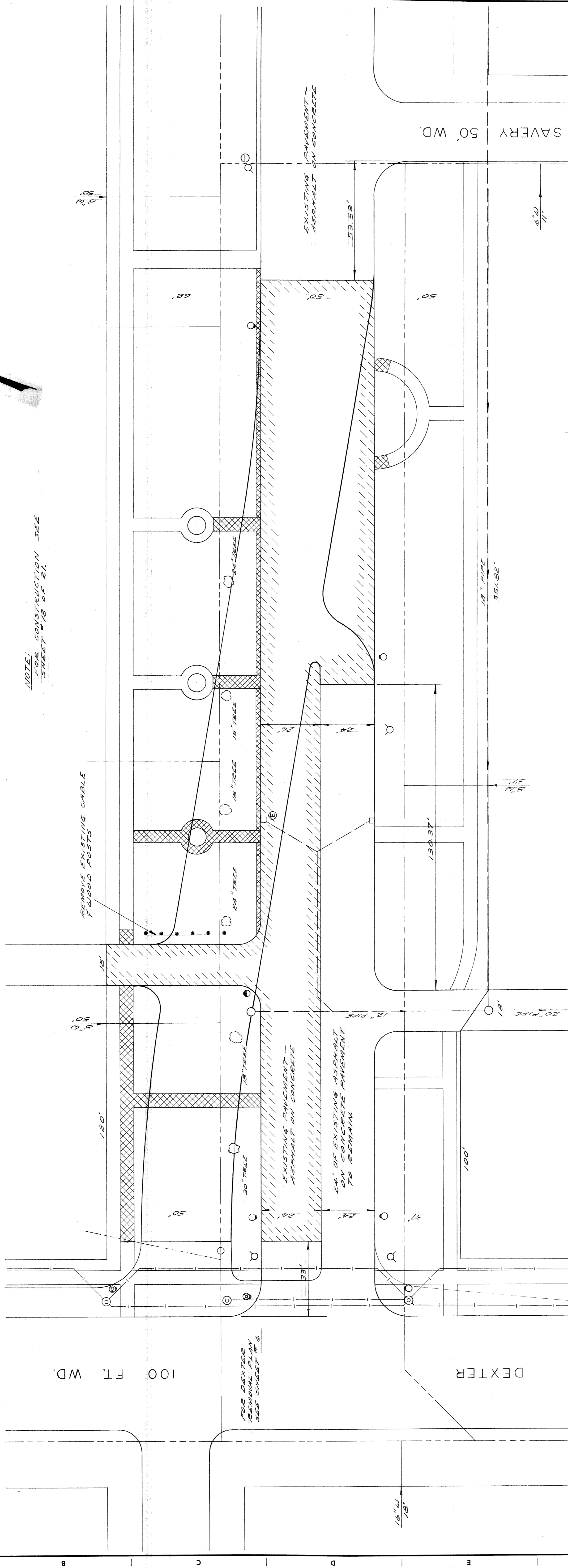
DATE: 3-25-69

PROJECT: WIDENING OF DEXTER BOULEVARD
 LONGFELLOW TO MONTEREY
 UTILITY AND REMOVAL
 STA. 32+79.8 TO STA. 37+87.21

CITY OF DETROIT
 DEPARTMENT OF PUBLIC WORKS
 CITY ENGINEERS OFFICE

SCALE: 1"=20'

SHEET 9 OF 21 SHEETS
 CONTRACT: PW 5767-A
 A.C. 1837A
 DATE: 3-29-68



NOTE:
FOR CONSTRUCTION SEE
SHEET #18 OF #1.

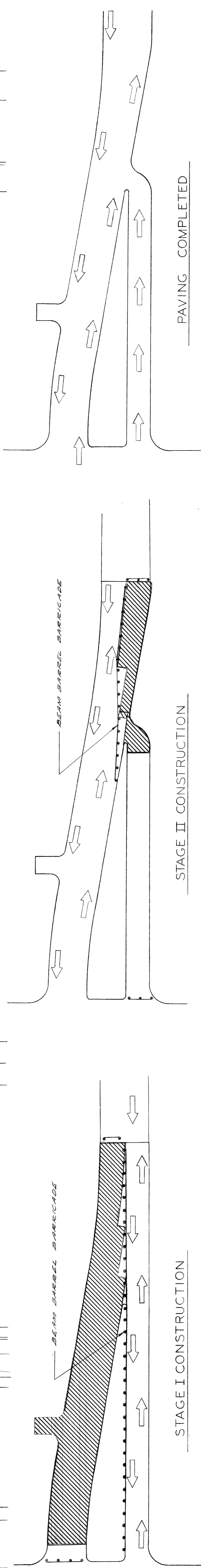
REMOVE EXISTING CABLE
F WOOD POSTS

FOR DEXTER
REMOVAL PLAN
SEE SHEET # 2

STAGE I CONSTRUCTION

STAGE II CONSTRUCTION

PAVING COMPLETED



CONSTRUCTION SEQUENCE

SCALE
HOR. 1" = 20'

SHEET 10 OF 21 SHEETS
CONTRACT
NO. P.W. 5767-A
A.O. 18.37A
DATE 3-29-68

WIDENING OF DEXTER BOULEVARD
LONGFELLOW TO MONTEREY
REMOVAL OF CHICAGO BOULEVARD
FROM DEXTER BOULEVARD TO SAVERLY

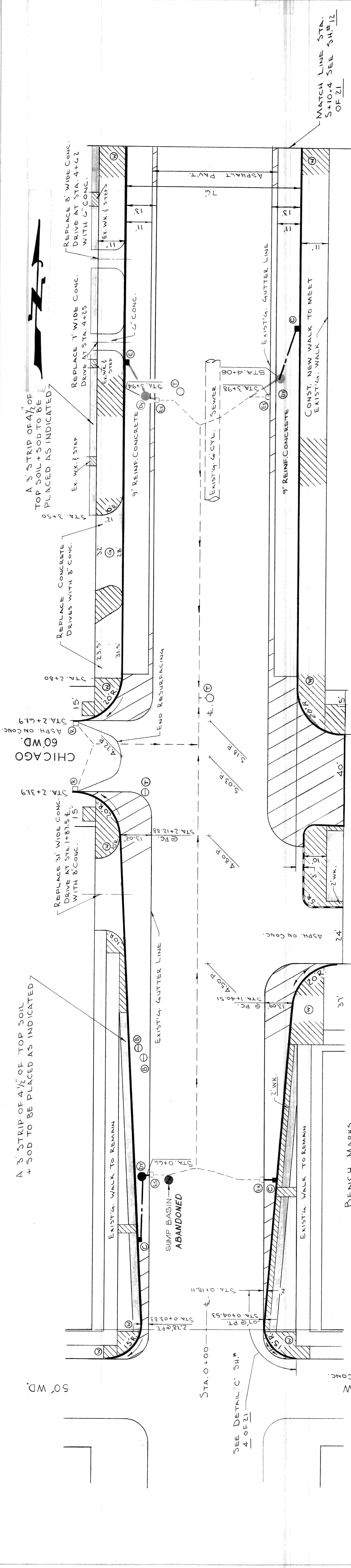
CITY OF DETROIT
DEPARTMENT OF PUBLIC WORKS
CITY ENGINEERS OFFICE

A.C.C. 3-25-68
APPROVED: *G. Erickson*
ENGINEER OF STREETS
W. K. Hamann
ADMINISTRATIVE ENGINEER
A. J. G. [Signature]
HEAD CIVIL ENGINEER

DESIGNED BY
DRAWN BY
SEWERS
APPROVED
CHECKED BY

REFERENCE
DRAWINGS

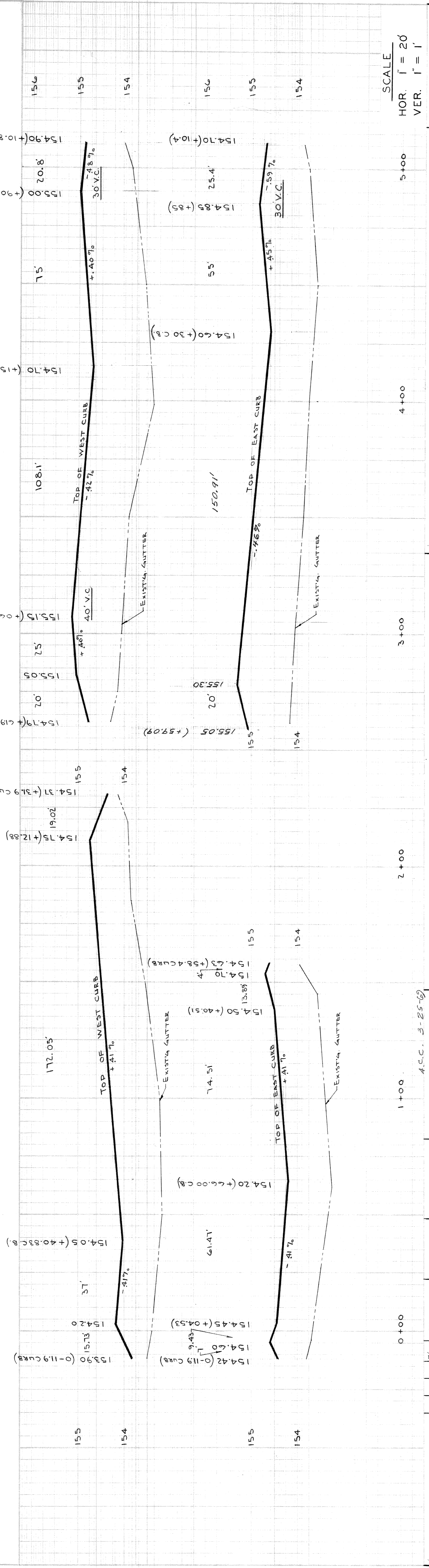
NO.	DESCRIPTION	BY	DATE
1	DELETE REMOVAL OF 30" TREE - SE W OF IN R DEXTER E 171.50' E CHICAGO T&E		
2			
3			
4			
5			
6			
7			
8			
9			
10			
11			



CHICAGO PLAN
 SEE CHICAGO PLAN SH. 18 OF 21

BENCH MARKS
 P.L.B.M. # 23-253 N.E. COR. COLLINGWOOD AND DEXTER EL. 155.837 R.
 C.B.M. # HYD. S.E. COR. LONGFELLOW AND DEXTER EL. 151.52
 C.B.M. # HYD. N.E. COR. CHICAGO AND DEXTER EL. 151.48
 C.B.M. # HYD. S.E. COR. ROCHESTER AND DEXTER EL. 151.69

NOTE:
 FOR CONSTRUCTION LEGEND, NOTES AND SYMBOLS SEE DETAIL SHEET 3 OF 21
 ADD 150 TO ALL PAV'T. ELEVATIONS
 MAKE ALL DRIVES 5' RADII UNLESS OTHERWISE NOTED



REALIGNMENT OF PROPOSED CHICAGO

DESIGNED BY	W. OWENS
DRAWN BY	L. CHAPMAN
SEWERS APPROVED	
CHECKED BY	J.P.O. Kansas

APPROVED: *J. Erickson*
 ENGINEER OF STREETS

APPROVED: *W.B. Hammond*
 ADMINISTRATIVE ENGINEER

APPROVED: *A. Sedore*
 HEAD CIVIL ENGINEER

CITY OF DETROIT
 DEPARTMENT OF PUBLIC WORKS
 CITY ENGINEERS OFFICE

WIDENING OF DEXTER BOULEVARD
 LONGFELLOW TO MONTEREY

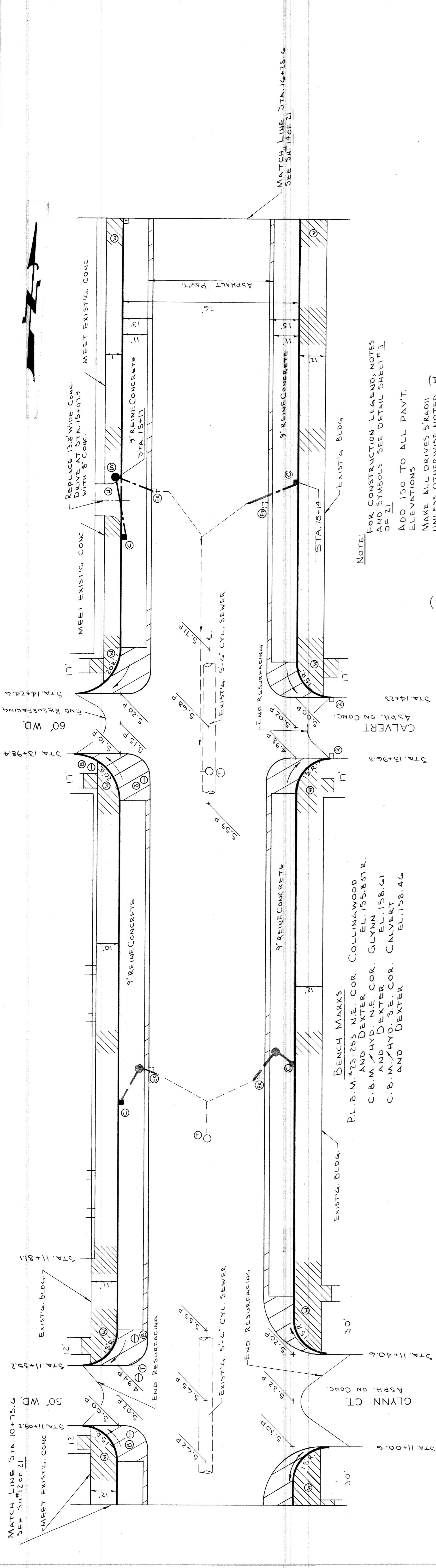
AS BUILT

DESCRIPTIONS REVISIONS

DRN. CND. DATE	
----------------	--

SCALE: HOR. 1" = 20', VER. 1" = 1'

SHEET 11 OF 21 SHEETS
 CONTRACT No. PW 5767-A
 A.O. 1837A
 DATE 3-29-68

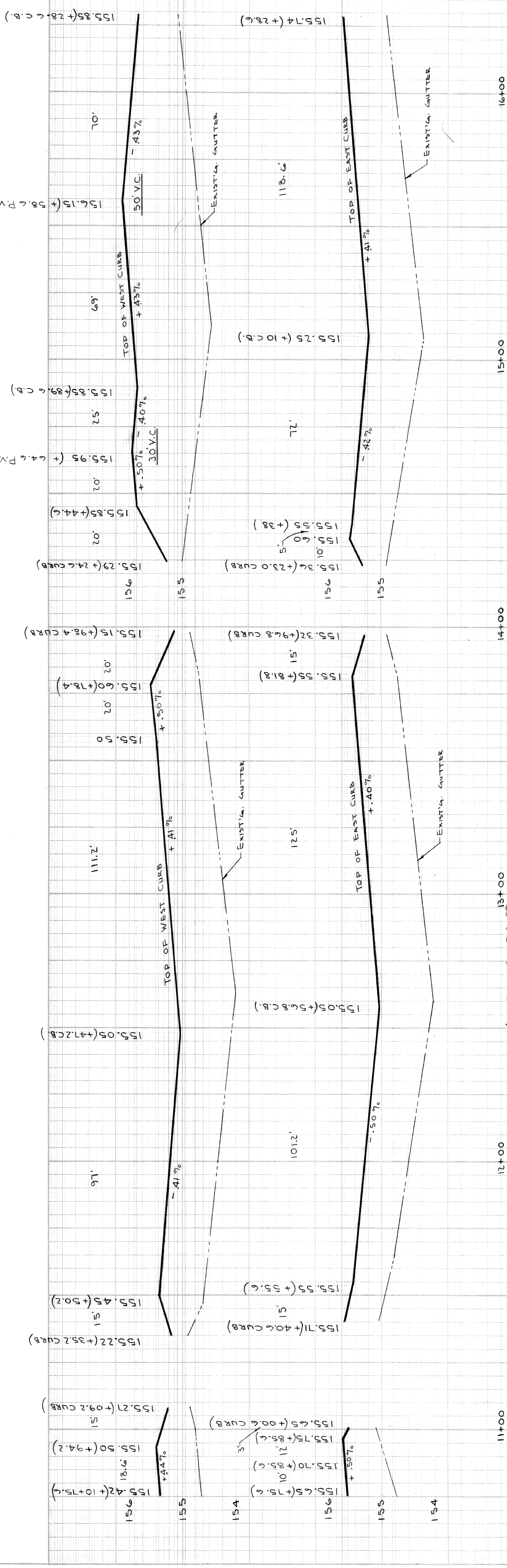


NOTE: FOR CONSTRUCTION LEGEND, NOTES AND SYMBOLS SEE DETAIL SHEET 3 OF 21

ADD 150 TO ALL PAVT. ELEVATIONS
MAKE ALL DRIVES 5' RADII UNLESS OTHERWISE NOTED

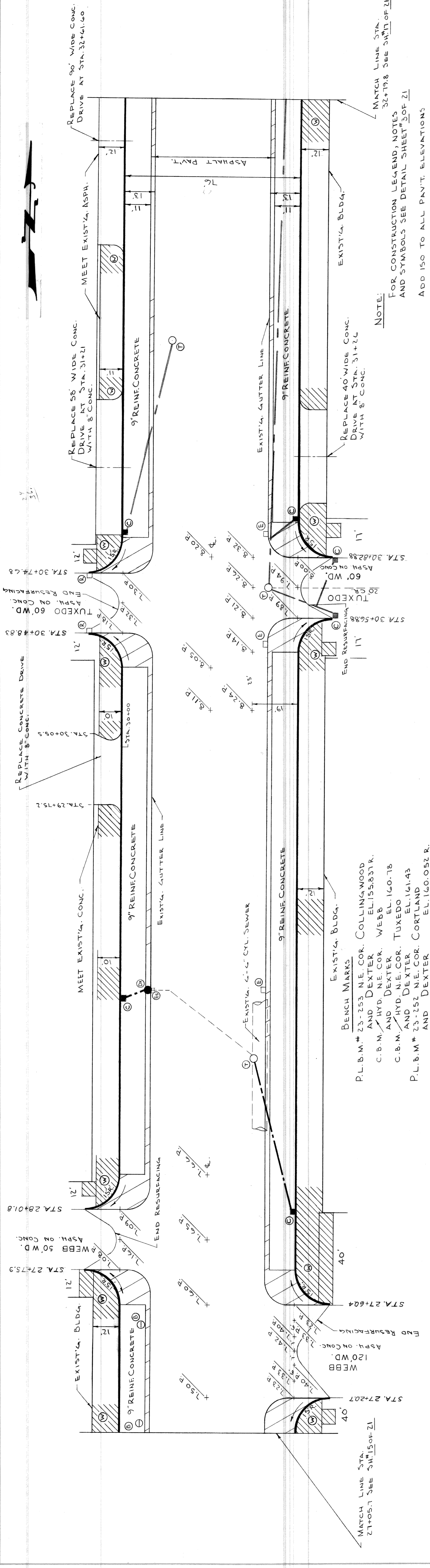
ASPH. ON CONC.
CALVERT
STA. 13+96.8
STA. 14+23

BENCH MARKS
P.L.B.M. #23-253 N.E. COR. COLLINGWOOD AND DEXTER EL. 155.831
C.B.M. #HYD. N.E. COR. GLYNN AND DEXTER EL. 158.61
C.B.M. #HYD. S.E. COR. CALVERT AND DEXTER EL. 158.46



SCALE
HOR. 1" = 20'
VER. 1" = 1'

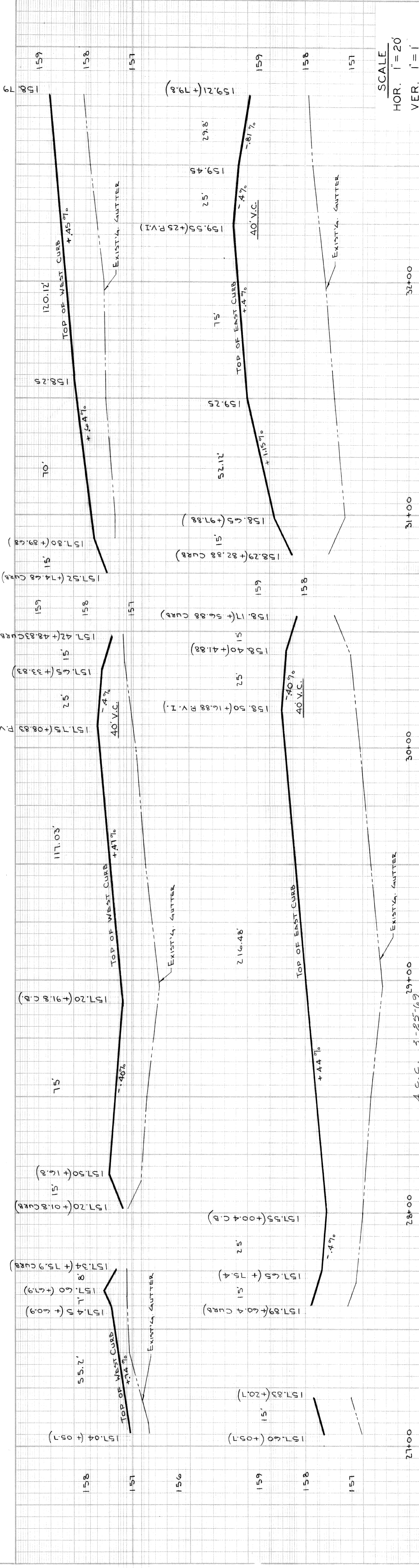
CHANGE RADI ON SE AND NE L.C. FROM 15' TO 10' IN CT. FROM EST. TO 15' ADJUSTED GRADE	5-9-64	REFERENCE DRAWINGS	DESIGNED BY W. OWENS	APPROVED: <i>J. Erickson</i> ENGINEER OF STREETS	CITY OF DETROIT DEPARTMENT OF PUBLIC WORKS CITY ENGINEERS OFFICE	WIDENING OF DEXTER BOULEVARD LONGFELLOW TO MONTEREY	SHEET 13 OF 21 SHEETS CONTRACT No. PW. 5767-A
AS BUILT	11/1/60	SEWERS APPROVED	DRAWN BY L. CHAPMAN	<i>W. B. Bannum</i> ADMINISTRATIVE ENGINEER	PAVING PLAN AND PROFILES STA. 10+75.6 TO STA. 16+28.6	AS BUILT	A.O. 1837A
DESCRIPTIONS	DRN. EX'D. M.P.D. DATE	CHECKED BY W.O.	HEAD CIVIL ENGINEER	DATE 3-29-68			



NOTE:
 FOR CONSTRUCTION LEGEND, NOTES AND SYMBOLS SEE DETAIL SHEET 30F 21
 ADD 150 TO ALL PAVT. ELEVATIONS
 MAKE ALL DRIVES 5' RADII UNLESS OTHERWISE NOTED

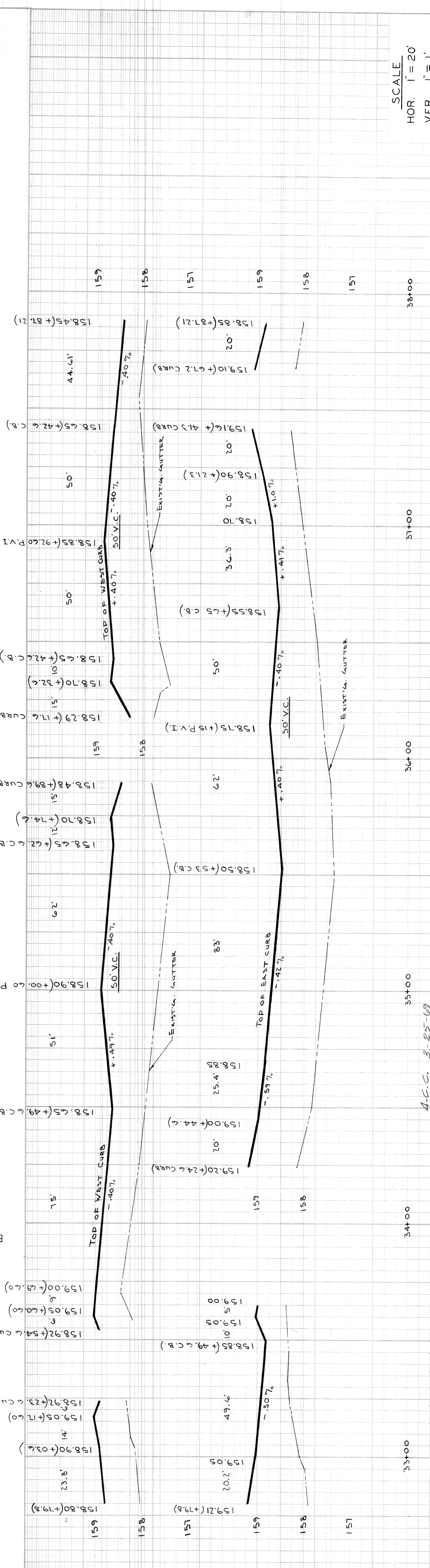
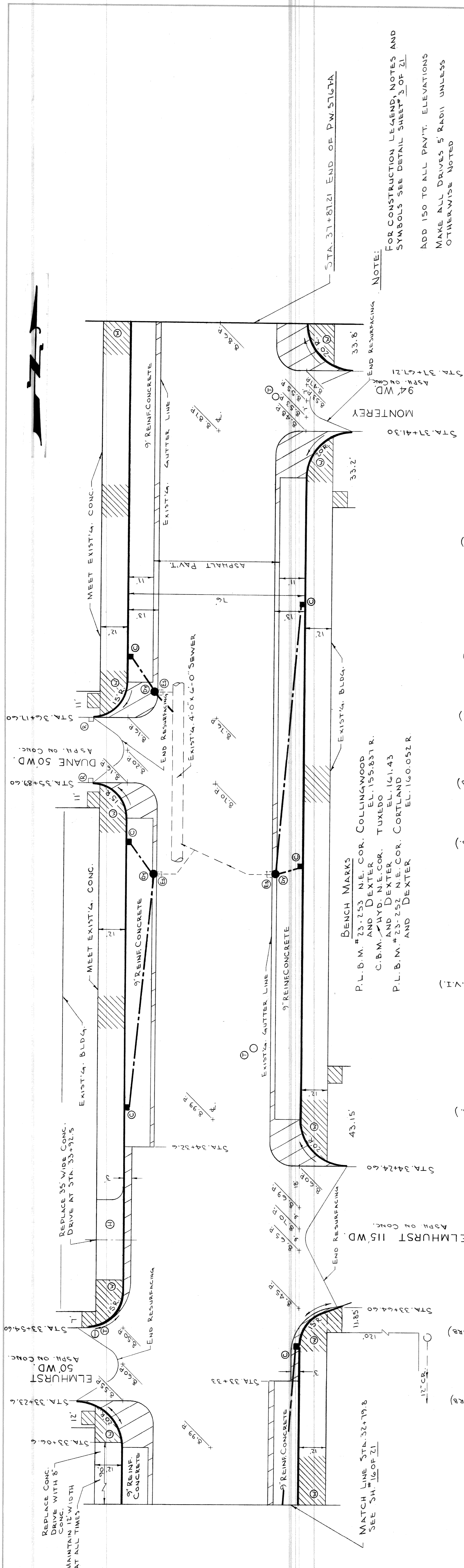
BENCH MARKS
 P.L.B.M.# 23-253 N.E. COR. COLLINGWOOD AND DEXTER EL.155.837R.
 C.B.M.# HYD. N.E. COR. WEBB AND DEXTER EL.160.78
 C.B.M.# HYD. N.E. COR. TUXEDO AND DEXTER EL.161.43
 P.L.B.M.# 23-252 N.E. COR. CORTLAND AND DEXTER EL.160.052 R.

MATCH LINE STA. 21+05.7 SEE SHEET 30F 21



AS BUILT	DESCRIPTIONS	DATE	BY
REVISIONS			
DESIGNED BY	W. OWENS	APPROVED:	<i>J. Eichen</i>
DRAWN BY	L. CHAPMAN	ENGINEER OF STREETS	<i>W. P. Samuel</i>
SEWERS APPROVED		ADMINISTRATIVE ENGINEER	<i>W. O. Owens</i>
CHECKED BY	W. O. Owens	HEAD CIVIL ENGINEER	
REFERENCE DRAWINGS			
CITY OF DETROIT	DEPARTMENT OF PUBLIC WORKS CITY ENGINEERS OFFICE		
WIDENING OF DEXTER BOULEVARD LONGFELLOW TO MONTEREY			
PAVING PLAN AND PROFILES STA. 27+05.7 TO STA. 32+79.8			
AS BUILT			
SHEET 16 OF 21 SHEETS			
CONTRACT No. PW. 5767-A			
A.O. 1837A			
DATE 3-29-68			

SCALE
 HOR. 1" = 20'
 VER. 1" = 1'



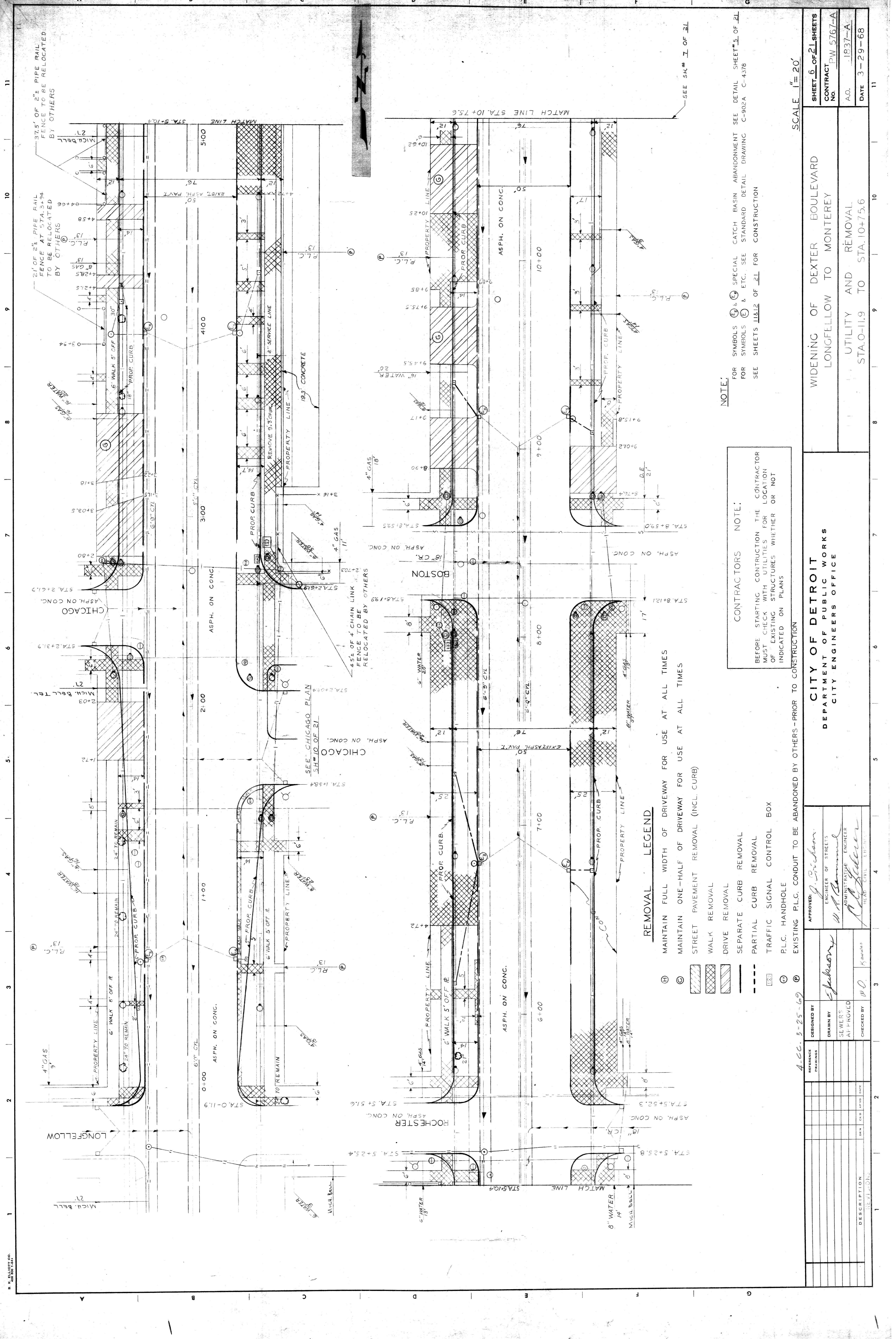
NOTE:
FOR CONSTRUCTION LEGEND, NOTES AND SYMBOLS SEE DETAIL SHEET # 3 OF 21

ADD 150 TO ALL PAV'T. ELEVATIONS
MAKE ALL DRIVES 5' RADII UNLESS OTHERWISE NOTED

BENCH MARKS
P.L.B.M. # 23-253 N.E. COR. COLLINGWOOD AND DEXTER. EL. 155.837 R.
C.B.M. # HYD. N.E. COR. TUXEDO AND DEXTER. EL. 141.43
P.L.B.M. # 23-252 N.E. COR. CORTLAND AND DEXTER. EL. 160.052 R.

SCALE
HOR. 1" = 20'
VER. 1" = 1'

CHANGE RADII ON WINDY SE CORNER OF ELMHURST FROM 10 TO 15' ADJUSTED GARBE	5948	REFERENCE DRAWINGS	DESIGNED BY W. OWENS	APPROVED: <i>J. Erickson</i>	CITY OF DETROIT DEPARTMENT OF PUBLIC WORKS CITY ENGINEERS OFFICE	WIDENING OF DEXTER BOULEVARD LONGFELLOW TO MONTEREY	SHEET 17 OF 21 SHEETS CONTRACT No. PW 5767-A A.O. 1837A DATE 3-29-68
				ENGINEER OF STREETS			
			DRAWN BY L. CHAPMAN	ADMINISTRATIVE ENGINEER	PAVING PLAN AND PROFILES STA. 32+79.8 TO STA. 37+87.21	AS BUILT	
			SEWERS APPROVED	HEAD CIVIL ENGINEER			
AS BUILT			CHECKED BY <i>W.C.</i>				
DESCRIPTIONS							
REVISIONS							



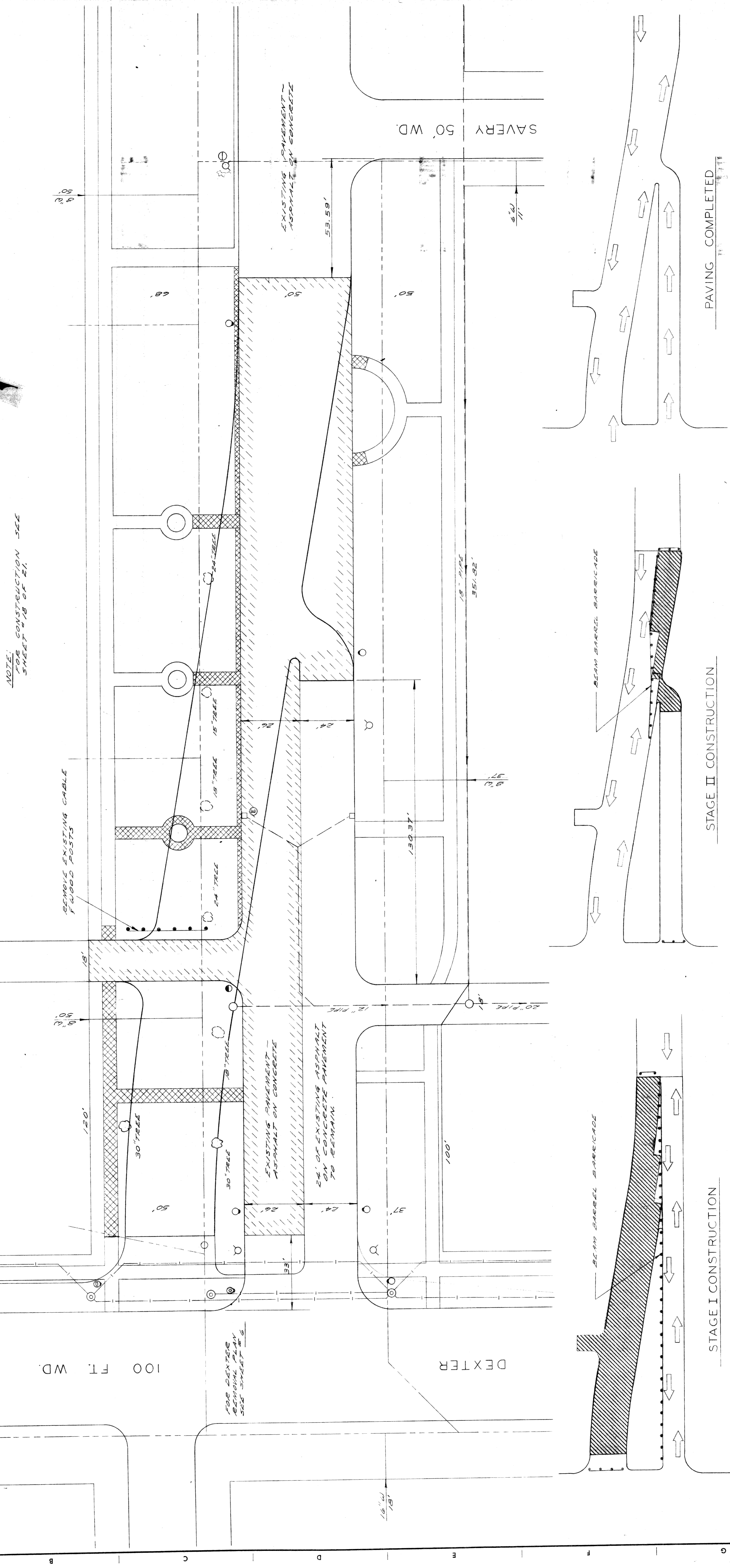
NOTE:
 FOR SYMBOLS (E) & (F) SPECIAL CATCH BASIN ABANDONMENT SEE DETAIL SHEET 'S' OF 'ZL'
 FOR SYMBOLS (E) & (F) ETC. SEE STANDARD DETAIL DRAWING C-902A C-437B
 SEE SHEETS 'L' & 'L2' OF 'ZL' FOR CONSTRUCTION

CONTRACTORS NOTE:
 BEFORE STARTING CONSTRUCTION THE CONTRACTOR
 MUST CHECK WITH UTILITIES FOR LOCATION
 OF EXISTING STRUCTURES WHETHER OR NOT
 INDICATED ON PLANS

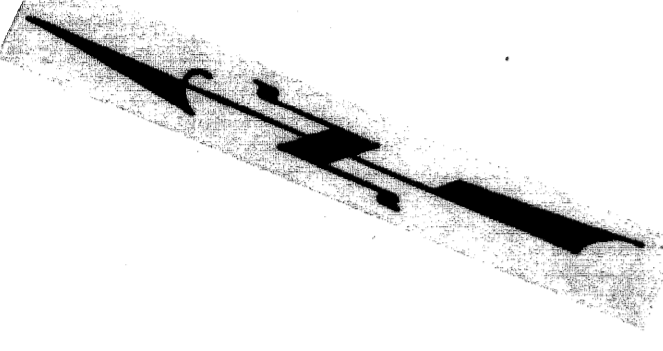
REMOVAL LEGEND

- (H) MAINTAIN FULL WIDTH OF DRIVEWAY FOR USE AT ALL TIMES
- (C) MAINTAIN ONE-HALF OF DRIVEWAY FOR USE AT ALL TIMES
- STREET PAVEMENT REMOVAL (INCL. CURB)
- WALK REMOVAL
- DRIVE REMOVAL
- SEPARATE CURB REMOVAL
- PARTIAL CURB REMOVAL
- TRAFFIC SIGNAL CONTROL BOX
- PL.C. HANDHOLE
- EXISTING P.L.C. CONDUIT TO BE ABANDONED BY OTHERS - PRIOR TO CONSTRUCTION

SHEET 6 OF 21 SHEETS CONTRACT NO. PW 5767-A A.O. 1837-A DATE 3-29-68	
WIDENING OF DEXTER BOULEVARD LONGFELLOW TO MONTEREY	
UTILITY AND REMOVAL STA. 0+11.9 TO STA. 10+75.6	
SCALE 1" = 20'	
APPROVED: <i>J. Pichon</i> ENGINEER OF STREETS	DESIGNED BY: <i>E. Johnson</i>
DRAWN BY: <i>W. H. Kamm</i> SEWER'S APPROVED: <i>W. O. Johnson</i> CHECKED BY: <i>W. O. Johnson</i>	DATE:
CITY OF DETROIT DEPARTMENT OF PUBLIC WORKS CITY ENGINEERS OFFICE	DESCRIPTION:



NOTE:
FOR CONSTRUCTION SEE
SHEET # 18 OF 21.



STAGE I CONSTRUCTION

STAGE II CONSTRUCTION

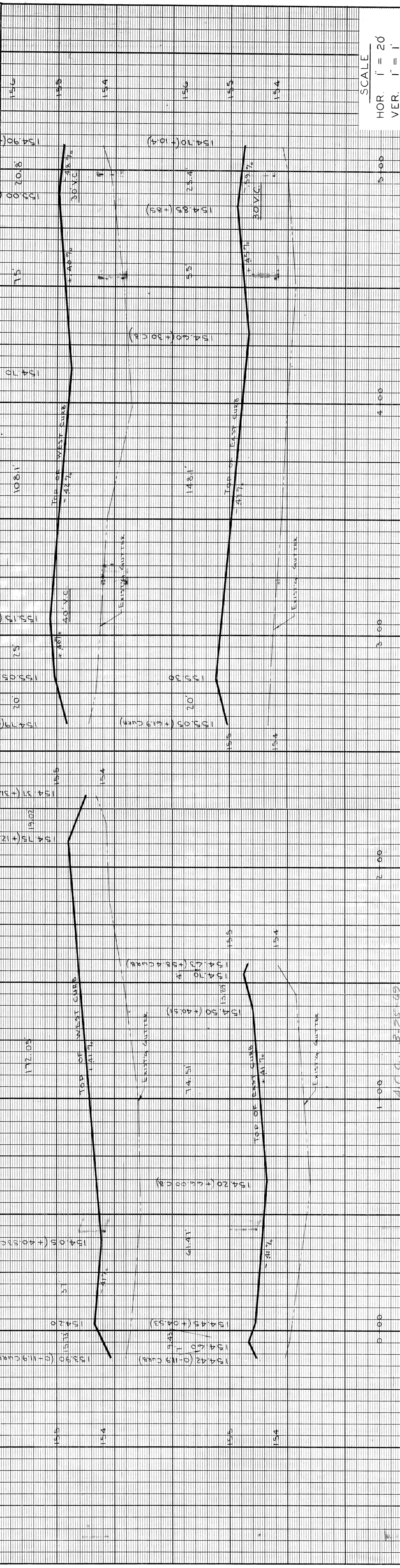
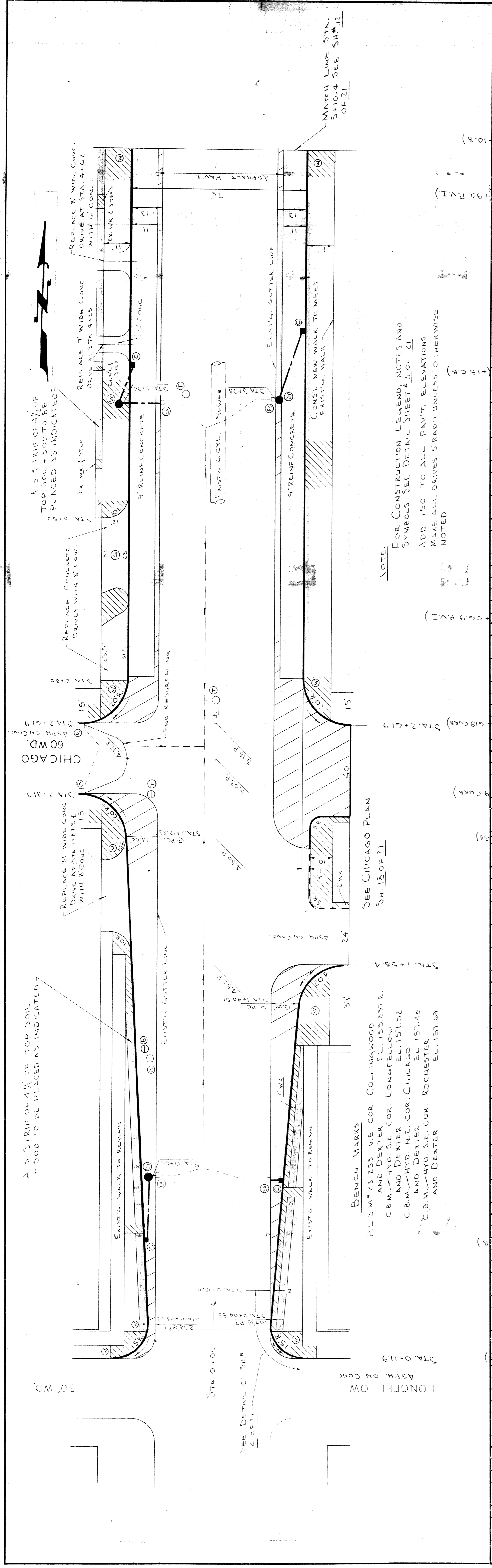
PAVING COMPLETED

CONSTRUCTION SEQUENCE

NOTE:
FOR LEGEND & NOTES SEE
SHEET # 2 OF 21.

SCALE
HOR. 1" = 20'

CITY OF DETROIT DEPARTMENT OF PUBLIC WORKS CITY ENGINEERS OFFICE	WIDENING OF DEXTER BOULEVARD LONGFELLOW TO MONTEREY		SHEET 10 OF 21 SHEETS
	REMOVAL OF CHICAGO BOULEVARD FROM DEXTER BOULEVARD TO SAVERY		CONTRACT No. P.W. 5767-A A.O. 1837A DATE 3-29-68
APPROVED: <i>G. Dickson</i> ENGINEER OF STREETS	DESIGNED BY E.C. McGEORGE	DRAWN BY W.R. Samuel ADMINISTRATIVE ENGINEER	A.C.C. 3-25-69
CHECKED BY W.O. K... HEAD CIVIL ENGINEER	SWEERS APPROVED	REVISIONS LOCATED BY COORDINATES ON SHEET	



NO.	DATE	DESCRIPTIONS	BY	CHKD	APPD

DESIGNED BY	W. OWENS
DRAWN BY	L. CHAPMAN
SEWERS APPROVED	W. B. ...
CHECKED BY	J. D. ...
APPROVED:	J. ...
ENGINEER OF STREETS	
ADMINISTRATIVE ENGINEER	
HEAD CIVIL ENGINEER	

CITY OF DETROIT DEPARTMENT OF PUBLIC WORKS CITY ENGINEERS OFFICE	WIDENING OF DEXTER BOULEVARD LONGFELLOW TO MONTEREY
PAVING PLAN AND PROFILES STA. 0-119 TO STA. 5+10.4	A.O. 1837A DATE 3-29-68

