

100
101
102
103
104
105
106
107
108
109
110
111
112
113
114
115
116
117
118
119
120
121
122
123
124
125
126
127
128
129
130
131
132
133
134
135
136
137
138
139
140
141
142
143
144
145
146
147
148
149
150
151
152
153
154
155
156
157
158
159
160
161
162
163
164
165
166
167
168
169
170
171
172
173
174
175
176
177
178
179
180
181
182
183
184
185
186
187
188
189
190
191
192
193
194
195
196
197
198
199
200

CONTRACTOR	
MUST CHECK WITH UTILITIES FOR LOCATIONS OF EXISTING STRUCTURES WHETHER OR NOT INDICATED ON PLANS.	
SCALE	
LOTS & ALLEYS NONE	
STREET WIDTH NONE	
VERTICAL NONE	
SUPPLEMENTARY DETAILS	
REVISIONS	
DATE	

EXCAVATION	CU.YDS.	ESTIMATED
PAYMENT REMOVAL	SQ. YDS.	
CURB REMOVAL	LFT.	
FILL		
ADJUST MANHOLES		
WAPES		
RE-CONSTRUCT CORNERS		
MANHOLES		
CATCH BASIN ADJUST		
CATCH BASIN STANDARD HEB		
12" SEWER PIPE	LFT.	
PAVING	SQ. YDS.	

QUANTITIES	ESTIMATED	
PAYMENT	SQ. YDS.	
BERM GRADING	SQ. YDS.	
CURB-TYPE H	LFT.	
TEST CORSE	EACH	
SIDEWALK 4" STANDARD	SQ. FT.	
CONCRETE DRIVE	SQ. FT.	
CONCRETE DRIVE	SQ. FT.	
3" TREE REMOVAL	4"-12" DIA.	
12" TREE REMOVAL	12"-18" DIA.	
DRIVEWAY REMOVAL	SQ. FT.	

ASSIGNMENT	NO.	LEVEL	DATE
BOOK	NO.	PG.	DATE
LOTS	NO.	LENGTH	LENGTH
CITY	NO.	LENGTH	LENGTH
TOTAL	DATE OF DRAWG.		
PAVING COMPLETED			
DRAINAGE COMPLETED			
PAVING COMPLETED			

INDEXED	38
NO.	11
TOPO	
MADE BY	McKeesok T.R.S.
CHECKED BY	
PLAN	
PROFILE	
GRADE	
SEWER APPROVED	
ESTIMATE	
FINAL CHECK	NJLC
APPROVED	
ENGINEER OF STREETS	
ADMINISTRATIVE ENGINEER	
HEAD CIVIL ENGINEER	

GROUP NO. _____ CONTRACT NO. P.W. 5758

STREET PAVING PLAN

CITY OF DETROIT

ELMWOOD PARK REHABILITATION PROJECT NO. 2 MICH R-62

DEPARTMENT OF PUBLIC WORKS-CITY ENGINEERS OFFICE

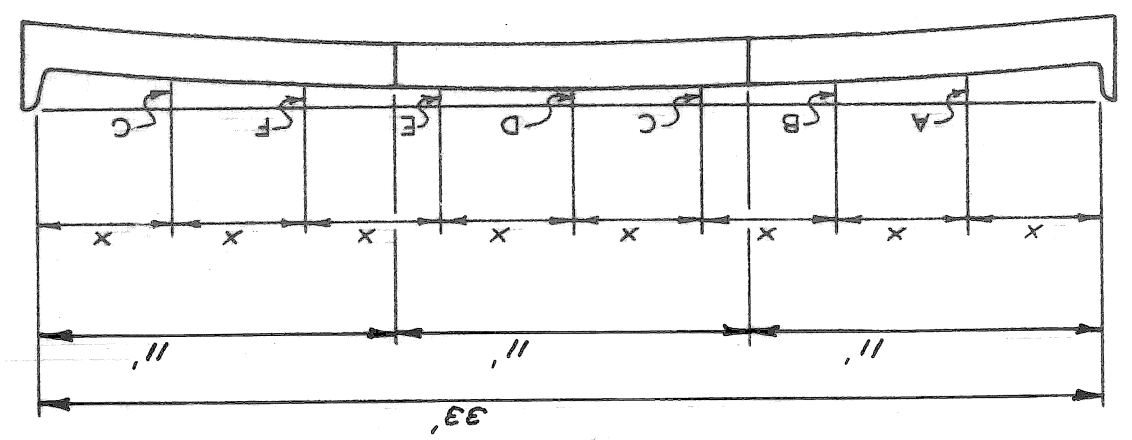
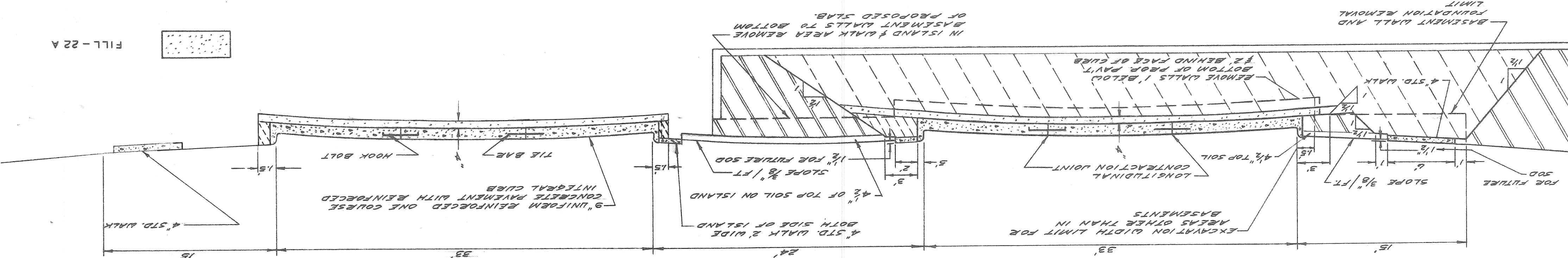
PAVING OF McDOUGALL

FROM JEFFERSON TO LAFAYETTE

8. REMOVAL OF MISC. PAVEMENT

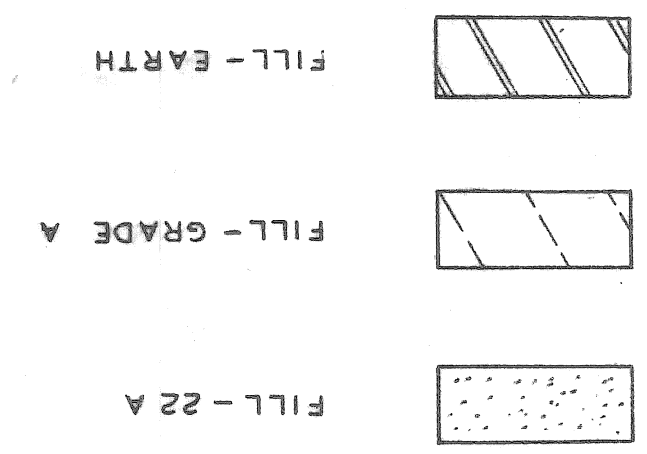
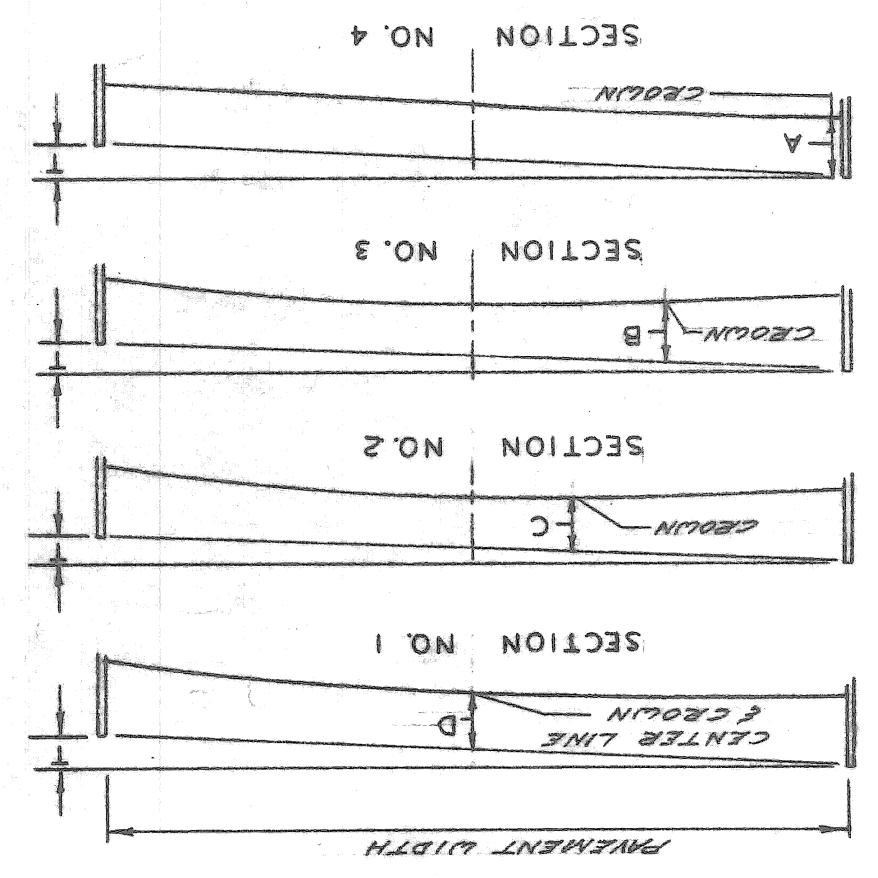
TYPICAL SECTION

SHEET 3 OF 15



PAYMENT	WIDTH	FACE	X	T	A	B	C	D	E	F	G	SEC.
0.0	5 1/4"	3 1/8"	3 1/8"	3 1/8"	2 1/8"	2 1/8"	3 1/8"	3 1/8"	3 1/8"	3 1/8"	5 1/4"	1
0.3	5 1/2"	4 3/8"	4 3/8"	3 1/2"	2 1/8"	2 3/4"	3 1/2"	3 1/2"	4 1/8"	5 3/8"	4 1/8"	1
0.4	5 1/2"	4 3/8"	4 3/8"	3 1/4"	2 3/8"	2 3/4"	3 1/4"	3 1/4"	4 1/8"	5 3/8"	5 3/8"	2
0.5	5 3/8"	4 1/8"	4 1/8"	3 1/4"	2 3/4"	2 3/4"	3 1/4"	3 1/4"	4 1/8"	5 3/8"	5 3/8"	2
0.6	5 1/4"	3 7/8"	3 7/8"	2 3/4"	2 1/4"	2 1/4"	2 3/4"	2 3/4"	3 1/4"	4 1/4"	4 1/4"	2
0.7	5 1/8"	3 7/8"	3 7/8"	2 3/4"	2 1/4"	2 1/4"	2 3/4"	2 3/4"	3 1/8"	4 1/8"	5 1/8"	3
0.8	5"	3 3/8"	3 3/8"	2 3/8"	2 1/8"	2 1/8"	2 3/8"	2 3/8"	3 1/8"	4 1/8"	5 1/8"	3
0.9	4 7/8"	3 1/4"	3 1/4"	2 1/4"	1 7/8"	1 7/8"	2 1/4"	2 1/4"	3 1/4"	4 3/4"	4 3/4"	3
1.0	7"	2 1/4"	2 1/4"	1 7/8"	1 1/8"	1 1/8"	2 1/4"	2 1/4"	3 1/4"	4 3/4"	4 3/4"	4

9" UNIFORM REINFORCED ONE COURSE CONCRETE



INDEX NO.	11
TOP NO.	38
INDXED	

PLAN	WAGNER W. OWENS
PROFILE	WAGNER W. OWENS
ESTIMATE	W. OWENS F. W.
FINAL CHECK	G. E. B. KAWWAS
APPROVED	<i>[Signature]</i> 5-16-69
ENGINEER OF STREETS	
ADMINISTRATIVE ENGINEER	
HEAD CIVIL ENGINEER	

ASSIGNMENT	A.O. 1706 (D)
BOOK NO.	LL 38 F @
LEVEL	2-21-66
DATE	
PAYING UNITS	SQ. YDS.
PAYING	
QUANTITIES	
ESTIMATED	

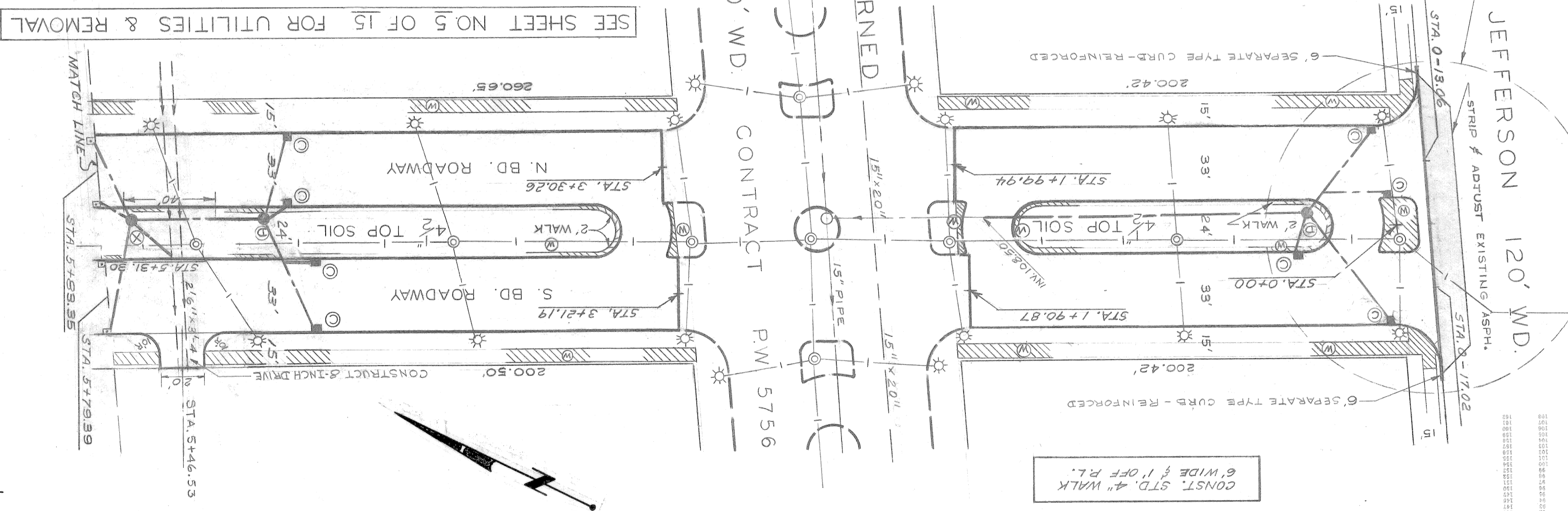
DATE OF DRAWING	4-25-69
TOTAL	
CITY 2L	LENGTH
CITY 2L	LENGTH
CITY 2L	LENGTH
CONCRETE DRIVE	STO. SQ. FT.
TREE REMOVAL	4"-12" DIA.
TREE REMOVAL	13"-18" DIA.
PAVING COMPLETED	
DRAINAGE COMPLETED	

EXCAVATION	CU. YDS.
PAYMENT REMOVAL	SQ. YDS.
CURB REMOVAL	LFT.
ADJUST MANHOLES	
MANHOLES	NEW
RECONSTRUCT CURB	
CATCH BASIN ADJUST	
CATCH BASIN STANDARD NEW	
12" SEWER PIPE	LFT.
PAVING	SQ. YDS.

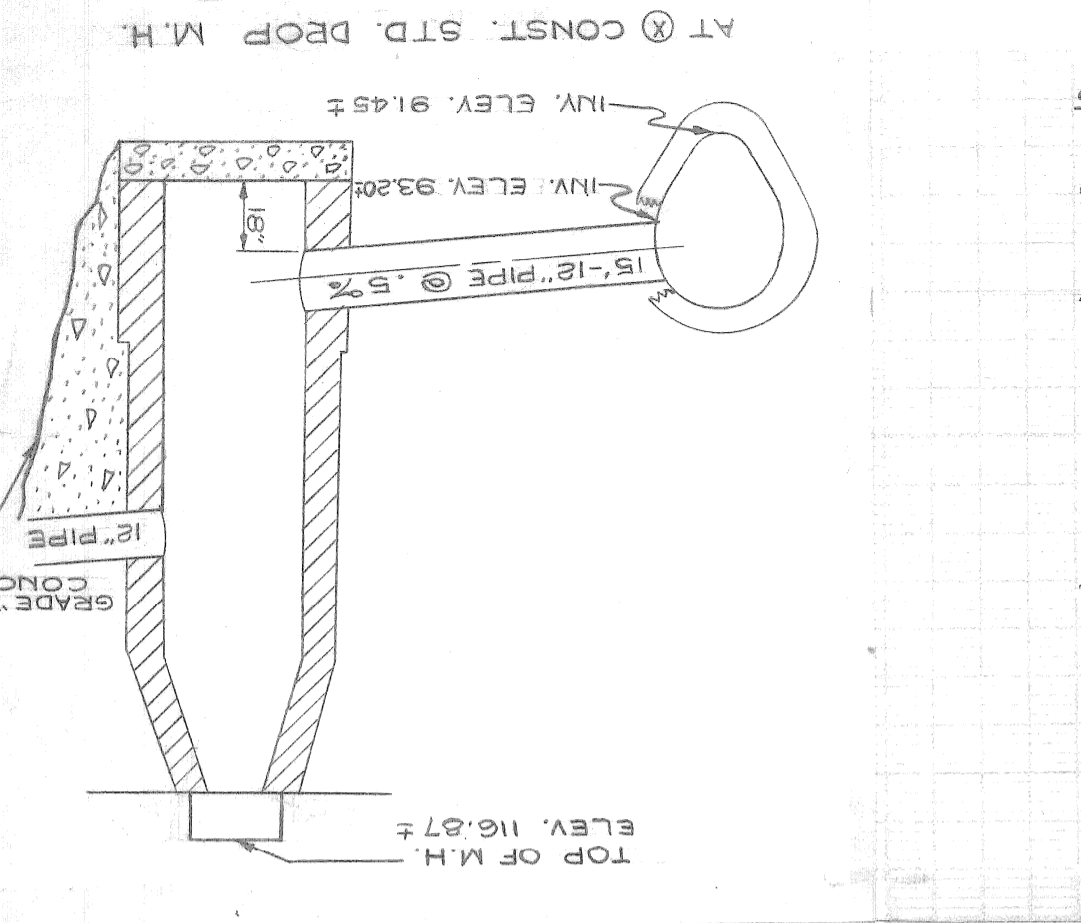
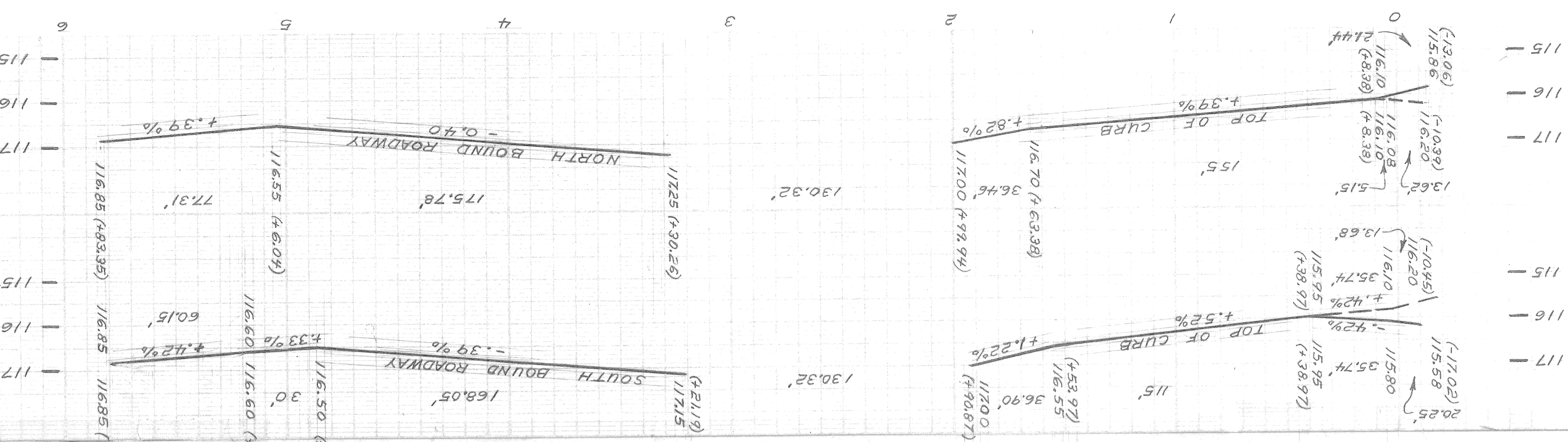
REVISIONS	
DATE	
9-24-70 P.L.B.M. 38-254A REMOVED	
C-4378 THROUGH C-4393	
SUPPLEMENTARY DETAILS	
VERTICAL	
STREET WIDTH	1" = 40'
LOTS & ALLEYS	1" = 40'
SCALE	1" = 20'
BEFORE STARTING CONSTRUCTION - CONTRACTOR MUST CHECK WITH UTILITIES FOR LOCATIONS OF EXISTING STRUCTURES WHETHER OR NOT INDICATED ON PLANS.	

TYPE OF PAVEMENT - 9" UNIFORM REINFORCED ONE COURSE CONCRETE
 REINFORCED INTEGRAL CURB
 - 9" UNIFORM REINFORCED AT STREET INTERSECTION EXCEPT AS NOTED.
 NOTE - FOR SYMBOLS () ETC., SEE STANDARD DETAIL DRAWING C-4378
 BENCH ELEV. MARKS

NOTE: STATIONING IS ALONG C. OF R.O.W.
 P.B.M. 38-254A N.E. COR. JEFFERSON & McDOUGALL 114.73
 C.B.M. 38-255A N.W. COR. LARNED & McDOUGALL 116.79
 C.B.M. 38-255A N.E. COR. LARNED & McDOUGALL 118.743
 C.B.M. 38-255A N.W. COR. LARNED & McDOUGALL 116.79
 C.B.M. R.R. SPIKE IN R.L.C. POLE IN 120.99
 N.W. COR. LAFAYETTE & ELWOOD 120.99
 N.W. COR. CONGRESS & McDOUGALL 118.31
 C.B.M. - HYD. S.E. COR. CONGRESS & McDOUGALL 118.31
 C.B.M. - HYD. N.W. COR. FORT & McDOUGALL 121.73



DETAIL OF DROP MANHOLE SEE STD. DWG. C-4387



AT (X) CONST. STD. DROP M.H.

