

PAVEMENT REMOVAL

DETROIT MEDICAL CENTER
 REHABILITATION PROJECT NO. 2
 MICH., R-52

FOR
 DEPARTMENT OF PUBLIC WORKS

PLAN INDEX

SHEET NO.	DESCRIPTION
1	TITLE SHEET
2	QUANTITY SHEET
3-6	PAVEMENT REMOVAL
7	DETAIL SHEET

Sewers - Withdrawn

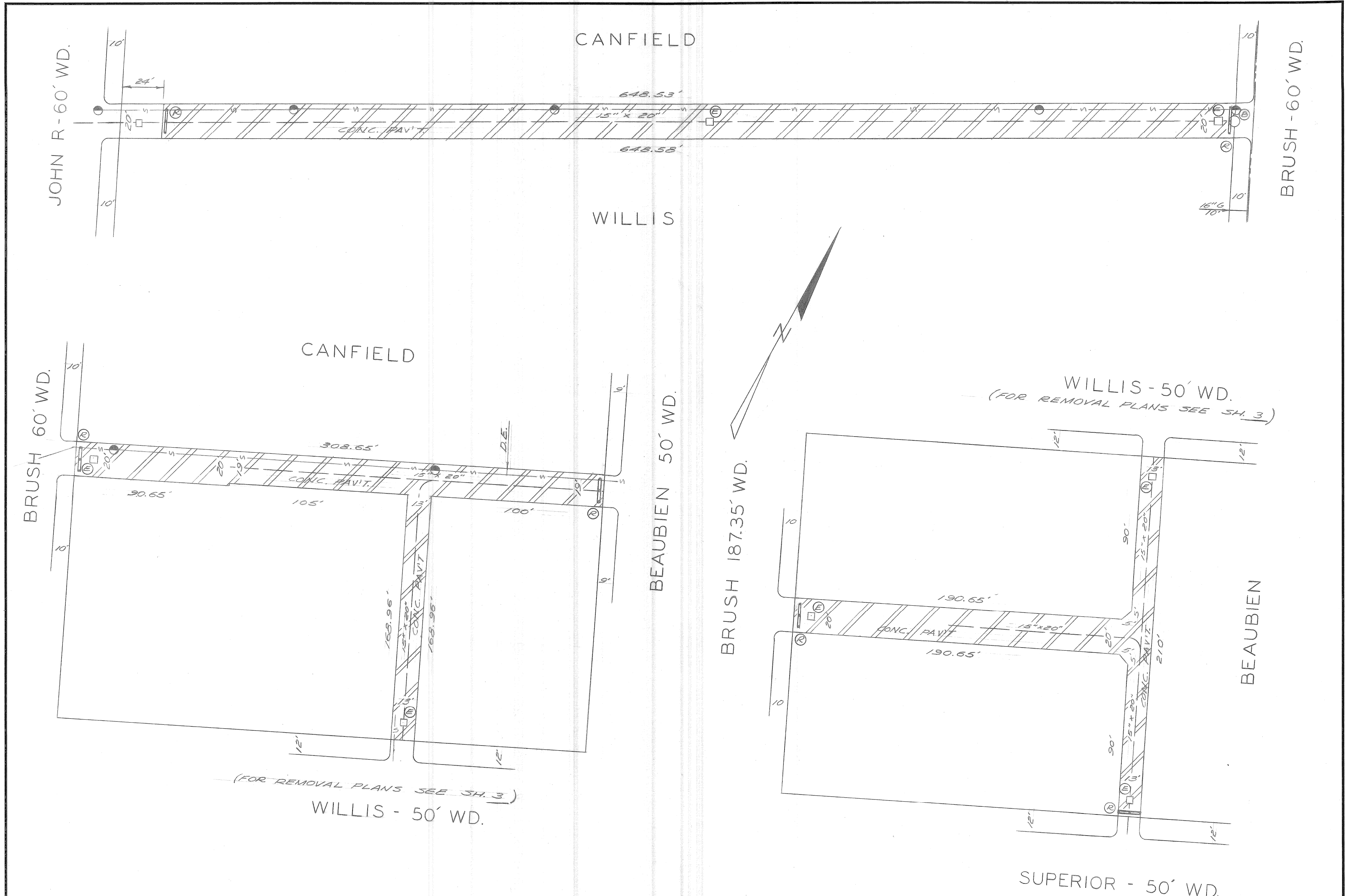
ACCEPTED BY C.C. 9-14-65

F E D C B A	DESIGNED BY	APPROVED	CITY OF DETROIT DEPARTMENT OF PUBLIC WORKS CITY ENGINEERS OFFICE	PAVEMENT REMOVAL		SHEET <u>1</u> OF <u>7</u> SHTS.	
	DRAWN BY <i>D. HAUER</i>	<i>Behr</i> ENGINEER OF STREETS		TITLE SHEET		CONTRACT NO. PW 4570	
	TRACED BY	<i>M. Kippen</i> ASSISTANT CITY ENGINEER		BOOK NO.	PG. NO.	SCALE	DATE 4-27-64
	DESCRIPTION REVISIONS	CHECKED BY <i>Kawwas</i>		CITY ENGINEER <i>Ericksen</i>	FILE NO. 11-18-P		

ITEM	QUANTITY	UNIT
STREET PAVEMENT REMOVAL	4147	SYDS.
ALLEY PAVEMENT REMOVAL	8852	SYDS.
WALK REMOVAL	14532	SFT.
4" STD. WALK - NEW	1560	SFT.
DRIVE REMOVAL	828	SFT.
SEPARATE TYPE CURB-NEW	144	LFT.
CATCH BASIN ABD.	33	EA.
MANHOLE (WATER) ADJ.	4	EA.
MANHOLE (SEWER) ADJ.	2	EA.
MANHOLE (SEWER) ABD.	1	EA.
MANHOLE RECONSTRUCT CONE	1	EA.
FILL - TYPE A	62	CYDS.
STREET & ALLEY GRADING	15839	SYDS.
SPECIAL WOOD BARRICADE	13	EA.
STEEL BEAM GUARD RAIL	26	LFT.
MAINTAIN TRAFFIC		L. SUM

Sewers - *SWP* drawn

F					DESIGNED BY	APPROVED	CITY OF DETROIT DEPARTMENT OF PUBLIC WORKS CITY ENGINEERS OFFICE	PAVEMENT REMOVAL MEDICAL CENTER PROJECT NO. 2, MICH. R-52	SHEET <u>2</u> OF <u>7</u> SHTS. CONTRACT NO. PW 4570 ASSIGNMENT NO. AO 1553 FILE NO. 11-18-P		
E				DRAWN BY	<i>Behm</i>						
D				<i>L. P. KING</i>	ENGINEER OF STREETS						
C				TRACED BY	<i>Indepere</i>						
B					ASSISTANT CITY ENGINEER						
A					<i>D. Hauer</i>	<i>Dejaun L. Palmer</i>					
	DESCRIPTION	DRW	CKD	APR	DATE	CHECKED BY		BOOK NO.	PG. NO.	SCALE	DATE
	REVISIONS					<i>D. Hauer</i>					<i>4-27-64</i>



FILL (EARTH MATERIAL) APPROX. 698 CYDS. THIS SHEET.
 NOTE - FOR LEGEND SEE SH. 7

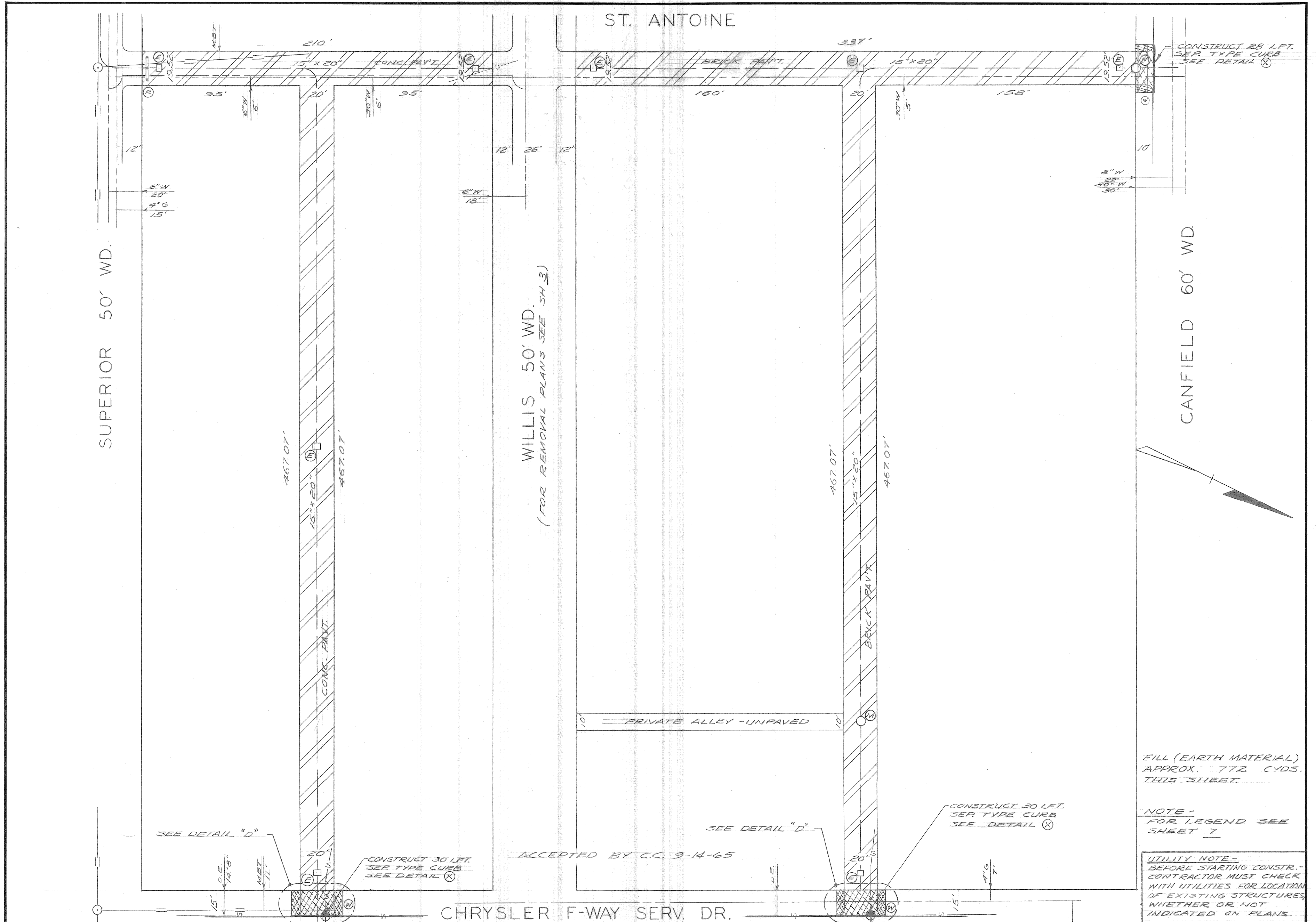
UTILITY NOTE - BEFORE STARTING CONSTRUCTION - CONTR. MUST CHECK WITH UTILITIES FOR LOCATION OF EXISTING STRUCTURES, WHETHER OR NOT INDICATED ON PLANS.

ACCEPTED BY C.C. 9-14-65

F					DESIGNED BY D. HAUER	APPROVED <i>Behm</i>
E					DRAWN BY D. HAUER	ENGINEER OF STREETS
D					SEWER APPROVED 4/29/64 <i>J. Brown</i>	ASSISTANT CITY ENGINEER
C					CHECKED BY L.P.K.	CITY ENGINEER
B					<i>Ericson</i>	
A					<i>Kawwas</i>	
	DESCRIPTION	DRW	CKD	APR	DATE	
	REVISIONS					

CITY OF DETROIT
 DEPARTMENT OF PUBLIC WORKS
 CITY ENGINEERS OFFICE

PAVEMENT REMOVAL			
MEDICAL CENTER PROJ. #2, MICH. R-52			
IN ALLEYS BOUNDED BY -			
W- JOHN R.	E- BRUSH	S- WILLIS	N- CANFIELD
W- BRUSH	E- BEAUBIEN	S- WILLIS	N- CANFIELD
W- BRUSH	E- BEAUBIEN	S- SUPERIOR	N- WILLIS
BOOK NO.	PG. NO.	SCALE 1"=40'	DATE 4-27-64
SHEET 4 OF 7 SHTS.		CONTRACT NO. PW 4570	
ASSIGNMENT NO. AO 1553		FILE NO. 11-18-P	



FILL (EARTH MATERIAL)
APPROX. 772 CYDS.
THIS SHEET.

NOTE -
FOR LEGEND SEE
SHEET 7

UTILITY NOTE -
BEFORE STARTING CONSTR. -
CONTRACTOR MUST CHECK
WITH UTILITIES FOR LOCATION
OF EXISTING STRUCTURES
WHETHER OR NOT
INDICATED ON PLANS.

ACCEPTED BY C.C. 9-14-65

F					
E					
D					
C					
B					
A	CHANGED ADJUST MANHOLE IN CANFIELD TO ABANDON	LPR	NJK	9-11-64	10/2/64
	DESCRIPTION	DRW	CKD	APR	DATE
	REVISIONS				

DESIGNED BY
D. HAUER

DRAWN BY
D. HAUER

SEWER APPROVED
[Signature]

CHECKED BY
L.P.K.

APPROVED
[Signature]

ENGINEER OF STREETS

ASSISTANT CITY ENGINEER
[Signature]

CITY ENGINEER
[Signature]

CITY OF DETROIT
DEPARTMENT OF PUBLIC WORKS
CITY ENGINEERS OFFICE

PAVEMENT REMOVAL
MEDICAL CENTER PROJECT #2, MICH. R-52

ALLEYS BOUNDED BY -
W-ST.ANTOINE, E- CHRYSLER SERV. DR. S- WILLIS N-CANFIELD
W-ST.ANTOINE, E- CHRYSLER SERV. DR. S- SUPERIOR N-WILLIS

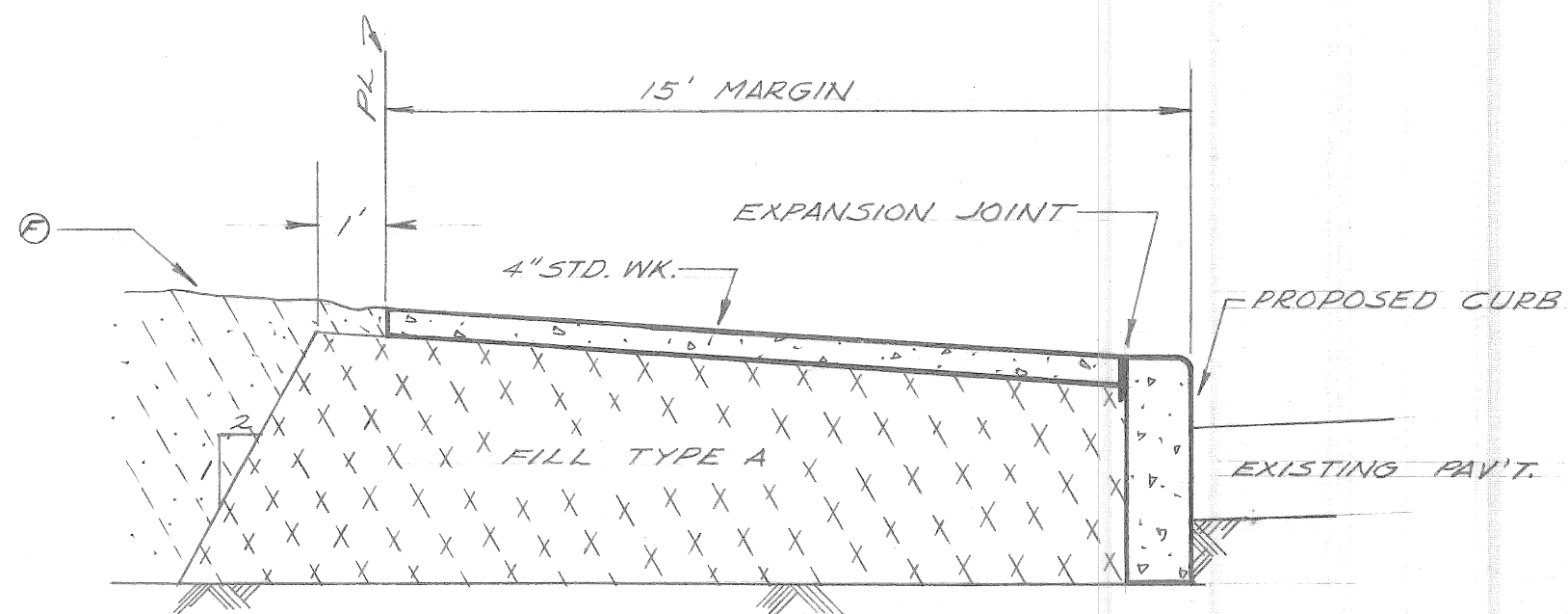
BOOK NO. PG. NO. SCALE 1" = 40' DATE 4-27-64

SHEET 6 OF 7 SHTS.

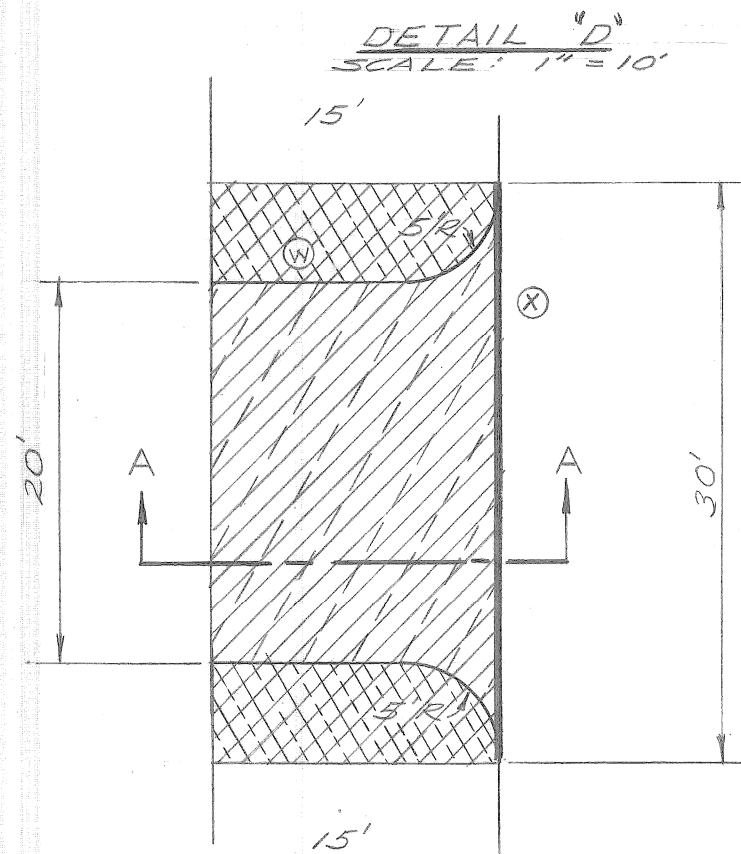
CONTRACT NO. PW 4570

ASSIGNMENT NO. AO 1553

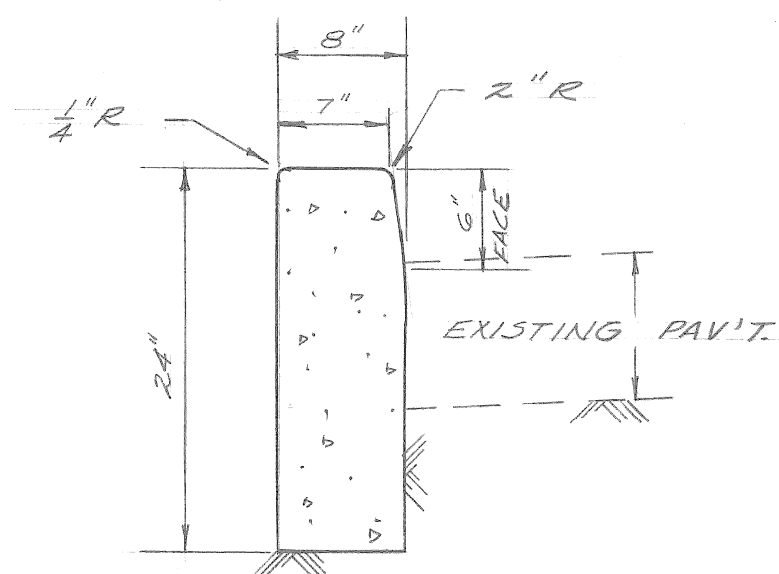
FILE NO. 11-18-P



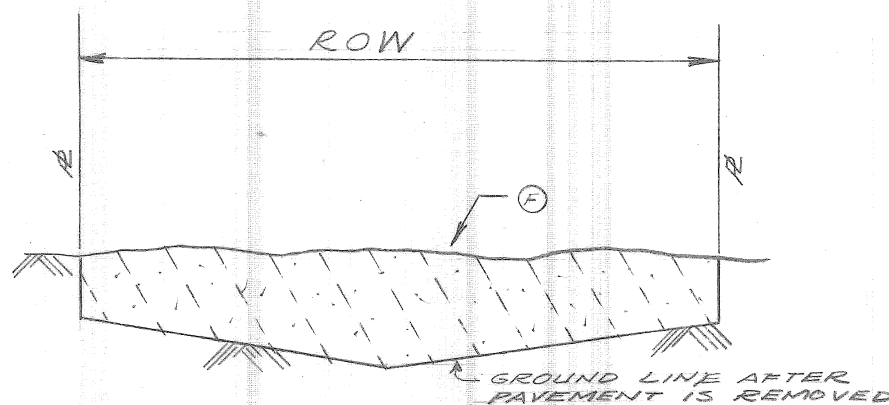
SECTION A-A
NO SCALE



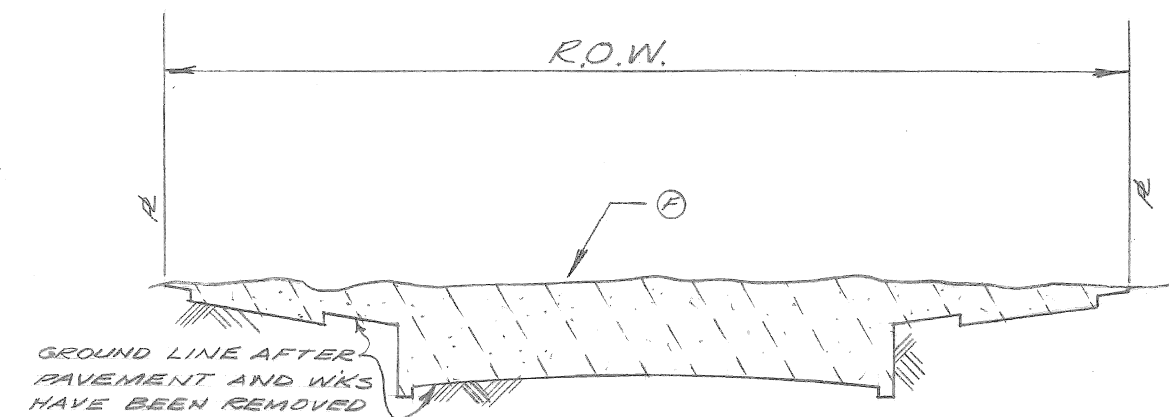
W. SERVICE DRIVE
W.P. CHRYSLER F'WAY



SEPARATE TYPE CURB DETAIL
NO SCALE

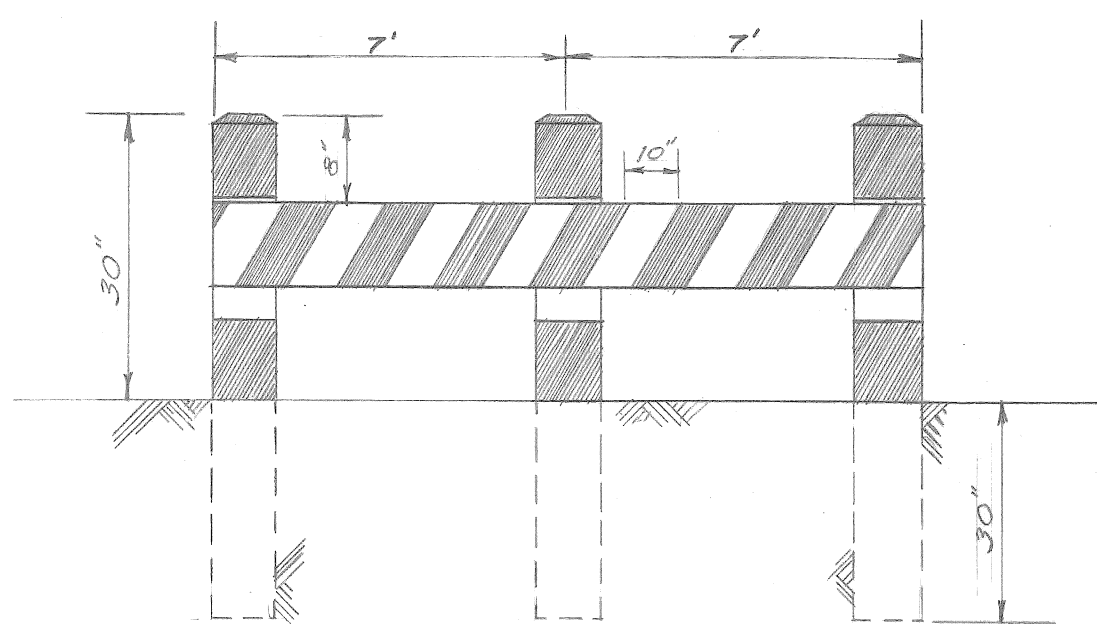


TYPICAL FILL SECTION - ALLEYS
NO SCALE



TYPICAL FILL SECTION - STREETS
NO SCALE

Ⓢ FILL WITH EARTH MATERIAL TO SURROUNDING GROUND ELEVATIONS

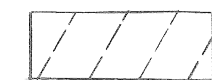
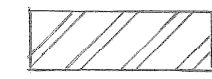
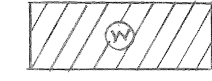










SPECIAL WOOD BARRICADE DETAIL
NO SCALE

NOTE:
FOR ADDITIONAL DETAILS SEE
CITY ENGINEER'S STANDARD
DRAWING C-4386

ACCEPTED BY C.C. 9-14-65

LEGEND

-  STREET PAV'T REMOVAL INCL. CURBS
-  ALLEY PAV'T REMOVAL
-  4" STD. WALK - NEW
-  WALK REMOVAL
-  REMOVE EXISTING DRIVE
-  CONSTRUCT SEPARATE TYPE CURB
-  ABANDON EXISTING CATCH BASIN
-  ADJUST EXISTING MANHOLE
-  ABANDON EXISTING MANHOLE
-  CONSTRUCT SPECIAL WOOD BARRICADE (SEE DETAIL)
-  CONSTRUCT 26' STEEL BEAM GUARD RAIL (NO END SHOES REQ.)

F					DESIGNED BY	L. P. KING	APPROVED	<i>Behm</i>
E					DRAWN BY	L. P. KING	ENGINEER OF STREETS	
D					TRACED BY		ASSISTANT CITY ENGINEER	
C					CHECKED BY	<i>Epichon</i>	CITY ENGINEER	
B						<i>D. HAUER</i>		
A						<i>Kawwas</i>		
	DESCRIPTION	DRW	CKD	APR	DATE			
	REVISIONS							

APPROVED
Behm
ENGINEER OF STREETS
Epichon
ASSISTANT CITY ENGINEER
D. HAUER
CITY ENGINEER
Kawwas

CITY OF DETROIT
DEPARTMENT OF PUBLIC WORKS
CITY ENGINEERS OFFICE

PAVEMENT REMOVAL			
MEDICAL CENTER PROJECT NO. 2, MICH. R-52			
DETAIL SHEET			
BOOK NO.	PG. NO.	SCALE	DATE
		NO SCALE UNLESS NOTED	4-27-64

SHEET 7 OF 7 SHTS.
CONTRACT NO. PW 4570
ASSIGNMENT NO. AO 1553
FILE NO. 11-18-P