





DATE	
BY	
SURVEYED	
PLANNED	
NOTED	
STRUCTURE	
NOTATIONS	
CHK	

DATE	
BY	
SURVEYED	
PLANNED	
NOTED	
STRUCTURE	
NOTATIONS	
CHK	

DATE	REVISIONS
2/21/58	DRAINAGE CHANGED

BEFORE STARTING CONSTRUCTION	
CONTRACTOR MUST CHECK WITH UTILITIES FOR LOCATIONS OF EXISTING STRUCTURES WHETHER OR NOT INDICATED ON PLANS.	
SCALE	
LOTS & ALLEYS	1" = 50'
STREET WIDTH	1" = 50'
VERTICAL	1" = 1'
DRAINAGE COMPLETED	
PAVING COMPLETED	C. C. 1-13-59

QUANTITIES		ESTIMATED	
EXCAVATION	CU. YDS.	LOTS	CITY
NEW CURB	LIN. FT.		
PAVING	SQ. YDS.		
TEST CORES			
SIDEWALK	SQ. FT.		
MANHOLES			
BASINS			
SEWER-12"	LIN. FT.		

PETITION NO. F.C.C.	4-8-58
ASSIGNMENT NO. 325-CO-25	GROUP NO. 58-9
BOOK NO. PD.	LEVEL DATE
LOTS 2L	LENGTH
CITY 2L	LENGTH
TOTAL	LENGTH
DATE OF DRAWG.	18 JUN 58

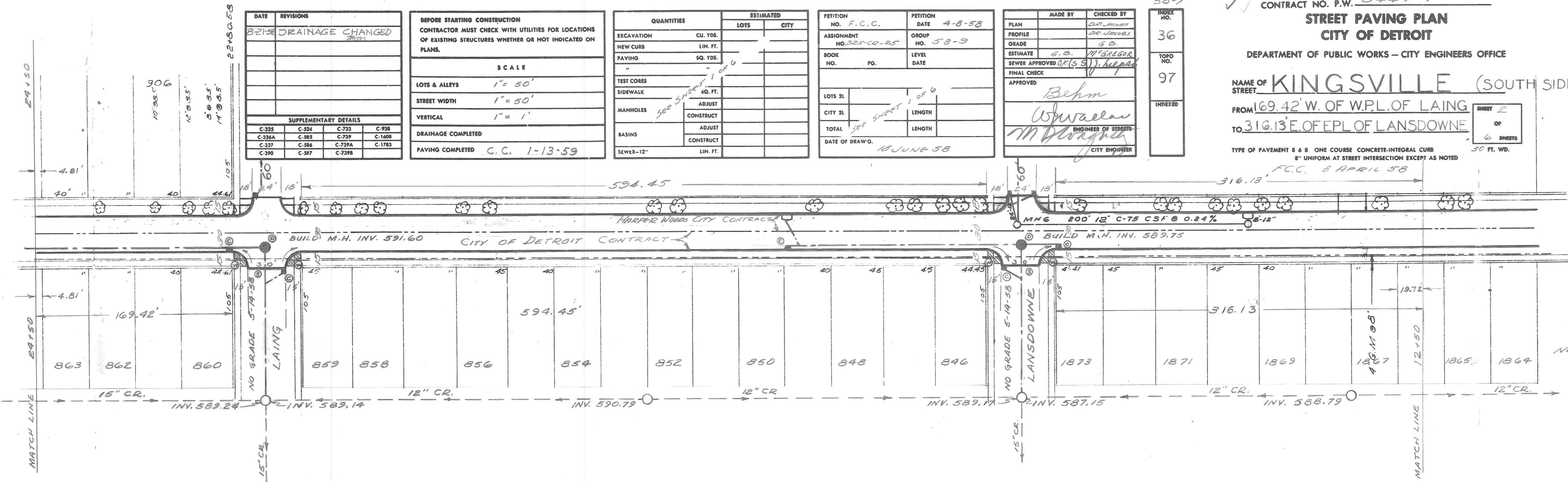
MADE BY	BEHN
CHECKED BY	W. W. WEAVER
ESTIMATE	G. D. MCGREGOR
SEWER APPROVED BY	(S. J. HEPBURN)
FINAL CHECK	
APPROVED	
ENGINEER OF STREETS	
CITY ENGINEER	

INDEX NO.	36
TOP NO.	97
INDEXED	

CONTRACT NO. P.W. 5447-F  
**STREET PAVING PLAN**  
**CITY OF DETROIT**  
 DEPARTMENT OF PUBLIC WORKS - CITY ENGINEERS OFFICE  
 NAME OF STREET **KINGSVILLE (SOUTH SIDE ONLY)**  
 FROM 169.42' W. OF W.P.L. OF LAING  
 TO 316.13' E. OF E.P.L. OF LANSDOWNE  
 TYPE OF PAVEMENT 8 & 8 ONE COURSE CONCRETE-INTEGRAL CURB  
 8" UNIFORM AT STREET INTERSECTION EXCEPT AS NOTED

SCALES  
 Horizontal 1" = 50'  
 Vertical 1" = 1' Part.  
 1" = 2' Sewer

BENCH MARKS  
 SW Cor of porch at 19139  
 Kingsville Approx 13+50 600.48  
 SW Cor of porch at 18923  
 Kingsville Approx 21+00 600.72



NOTE  
 HARPER WOODS STANDARD TO BE USED ON HARPER WOODS SIDE,  
 DETROIT BASIN STANDARD TO BE USED ON DETROIT SIDE.

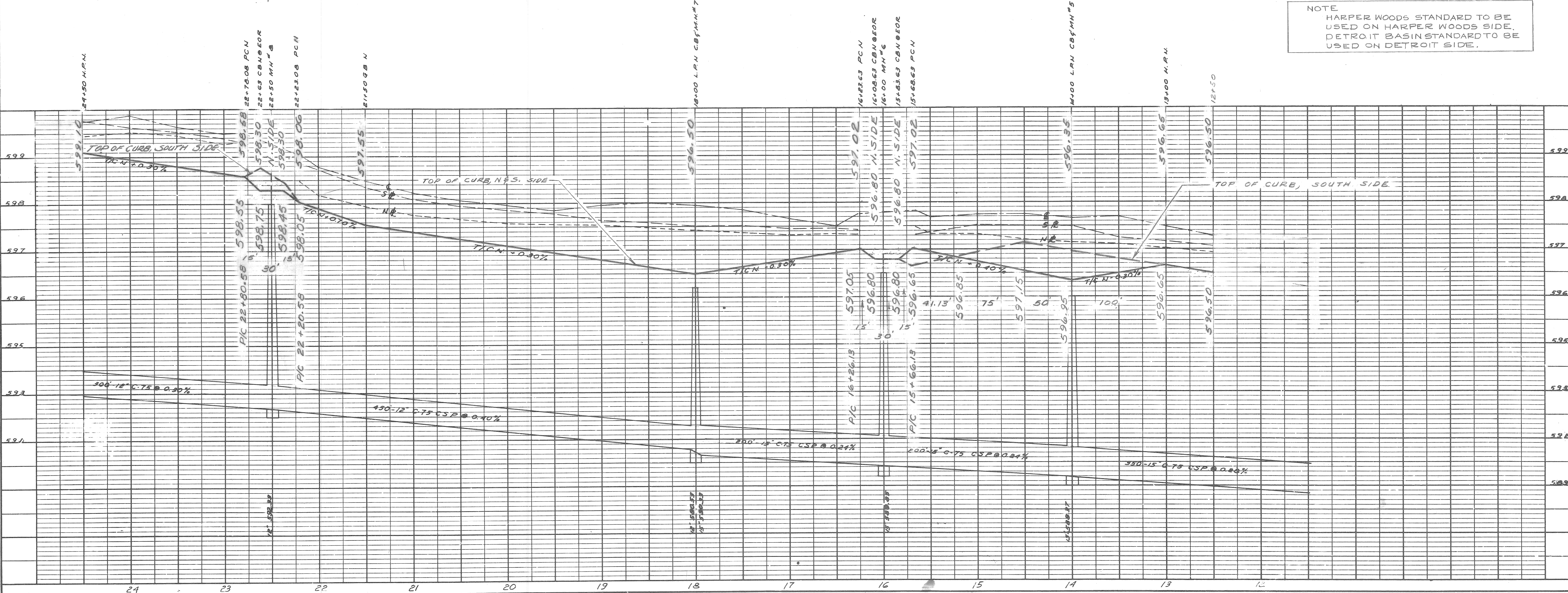


PLATE 1-PLAN-PROFILE O. P. R. & R. E.  
 100% HAS PARTICIPATED AND PRINTED IN U. S. A.  
 CHARLES BRUNING COMPANY, INC.



DATE	REVISIONS
8-12-58	GAS LINE ADDED
8-21-58	DRAINAGE CHANGED

BEFORE STARTING CONSTRUCTION CONTRACTOR MUST CHECK WITH UTILITIES FOR LOCATIONS OF EXISTING STRUCTURES WHETHER OR NOT INDICATED ON PLANS.

SCALE  
 LOTS & ALLEYS 1" = 50'  
 STREET WIDTH 1" = 50'  
 VERTICAL 1" = 1'

DRAINAGE COMPLETED  
 PAVING COMPLETED C. C. 1-13-59

QUANTITIES	ESTIMATED	
	LOYS	CITY
EXCAVATION CU. YDS.		
NEW CURB LIN. FT.		
PAVING SQ. YDS.		
TEST CORER		
SIDEWALK		
MANHOLES		
BASINS		
SEWER-12"		

PETITION NO. F.C.C.		PETITION DATE 4-8-58	
ASSIGNMENT NO. 325-CR-28	GROUP NO. 58-9	MADE BY	CHECKED BY
BOOK NO.	LEVEL DATE	ESTIMATE	SEWER APPROVED
LOTS 21	LENG.	APPROVED	
CITY 21	LENGTH		
TOTAL			
DATE OF DRAW'G. 6-18-58			

PLAN	MADE BY	CHECKED BY
PROFILE		
GRADE		
ESTIMATE		
SEWER APPROVED		
FINAL CHECK		
APPROVED		

58-9  
 INDEX NO. 36  
 TOP NO. 97  
 INDEXED

CONTRACT NO. P.W. 3447-F  
**STREET PAVING PLAN**  
**CITY OF DETROIT**  
 DEPARTMENT OF PUBLIC WORKS - CITY ENGINEERS OFFICE

NAME OF STREET **KINGSVILLE (SOUTH SIDE ONLY)**  
 FROM 276.69' W OF W.P.L. ROSSITER  
 TO W.P.L. OF BEACONSFIELD

TYPE OF PAVEMENT 8 & 8 ONE COURSE CONCRETE-INTEGRAL CURB 8" UNIFORM AT STREET INTERSECTION EXCEPT AS NOTED  
 F.C.C. 4-8-58

SCALES  
 Horizontal 1" = 50'  
 Vertical 1" = 1' Pavt.  
 1" = 2' Sewer

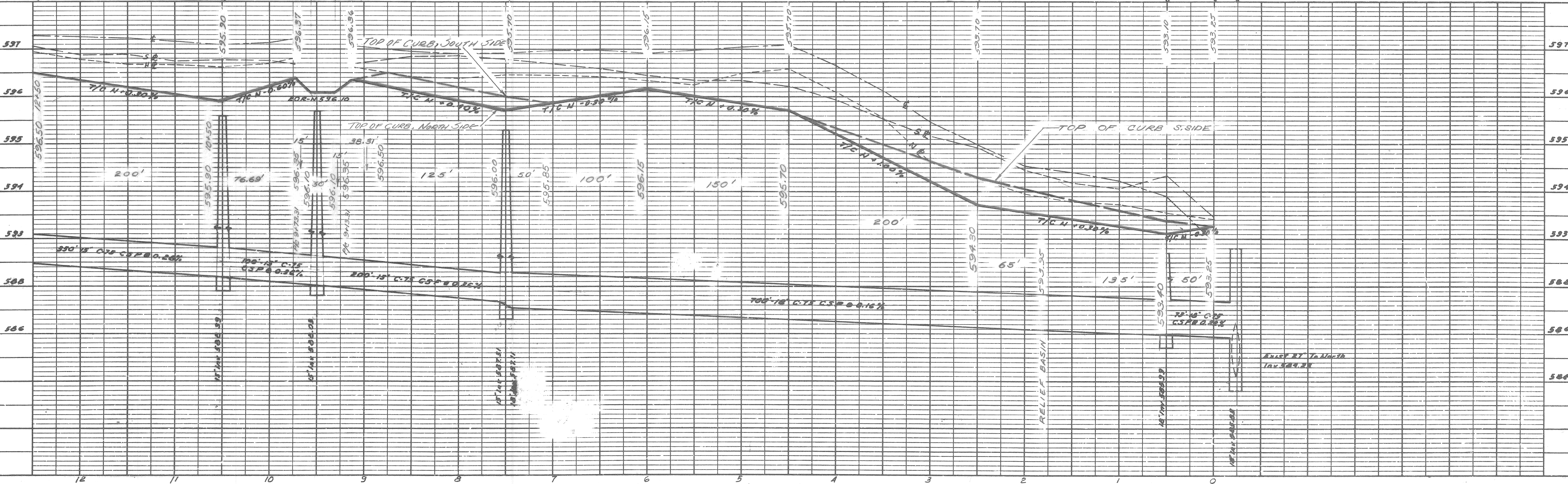
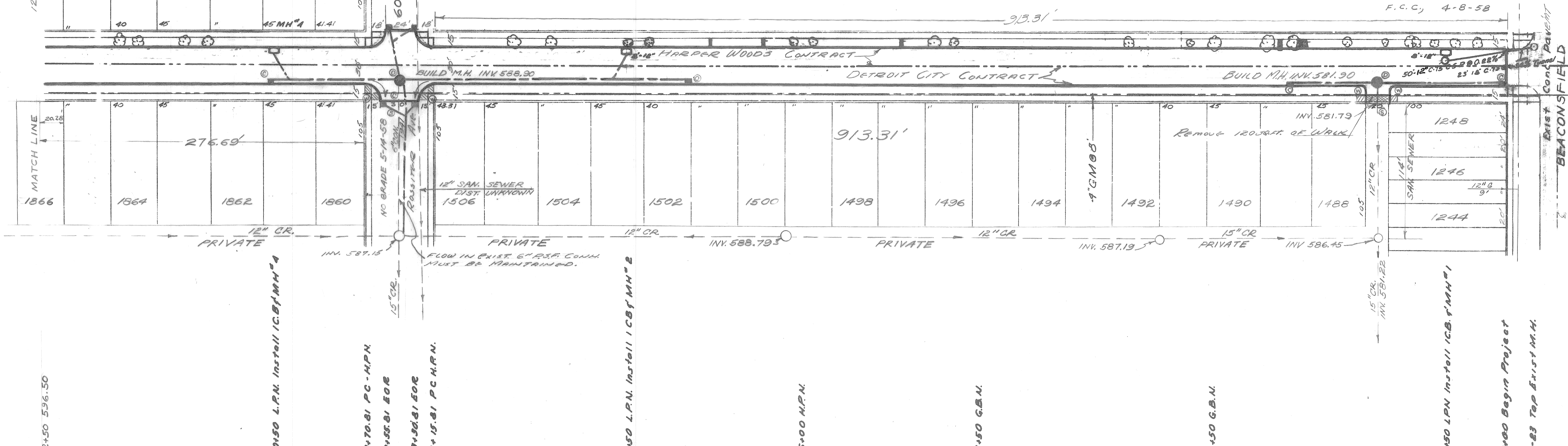
BENCH MARKS  
 1 On Hyd on NE Cor. Beaconsfield and Kingsville 596.08  
 5-W. Cor of Burch at 19331 Kingsville approx Sta 1+50 599.44

NOTE:  
 FOR CITY DATUM, SUBTRACT 479.79

NOTE:  
 FOR SYMBOLS @, ETC., SEE STD. DET. DWG C-327.

PLAN  
 DRAWING NO. 58-9  
 DATE 6-18-58  
 BY [Signature]  
 CHECKED [Signature]  
 IN CHARGE [Signature]

PROFILE  
 DRAWING NO. 58-9  
 DATE 6-18-58  
 BY [Signature]  
 CHECKED [Signature]  
 IN CHARGE [Signature]





**STREET PAVING PLAN**  
**CITY OF DETROIT**  
 DEPARTMENT OF PUBLIC WORKS - CITY ENGINEERS OFFICE

NAME OF STREET: **KINGSVILLE (SOUTH SIDE ONLY)**  
 FROM: **E.P.L. OF BEACONSFIELD**  
 TO: **431.59' E. OF E.P.L. OF BALFOUR**

TYPE OF PAVEMENT: **6" ONE COURSE CONCRETE-INTTEGRAL CURB**  
**8" UNIFORM AT STREET INTERSECTION EXCEPT AS NOTED**  
 F.C.C. 8 APRIL 58

SCALES  
 Horizontal 1"=50'  
 Vertical 1"=2' Sewer

BENCH MARKS  
 SOUTHWEST CORNER OF PORCH AT 18737 KINGSVILLE ELEV. 102.44 582.22  
 SOUTHWEST CORNER OF PORCH AT 18557 KINGSVILLE ELEV. 102.97 582.76

DATE	REVISIONS
8-21-58	DRAINAGE CHANGED

BEFORE STARTING CONSTRUCTION CONTRACTOR MUST CHECK WITH UTILITIES FOR LOCATIONS OF EXISTING STRUCTURES WHETHER OR NOT INDICATED ON PLANS.

SCALE

LOTS & ALLEYS 1"=50'  
 STREET WIDTH 1"=50'  
 VERTICAL 1"=2'

DRAINAGE COMPLETED  
 PAVING COMPLETED C.C. 1-13-59

QUANTITIES	ESTIMATED	LOTS	CITY
EXCAVATION CU. YDS.			
NEW CURB LIN. FT.			
PAVING SQ. YDS.			
TEST CORES			
SIDWALK SQ. FT.			
MANHOLES			
BASINS			
SEWER-12" LIN. FT.			

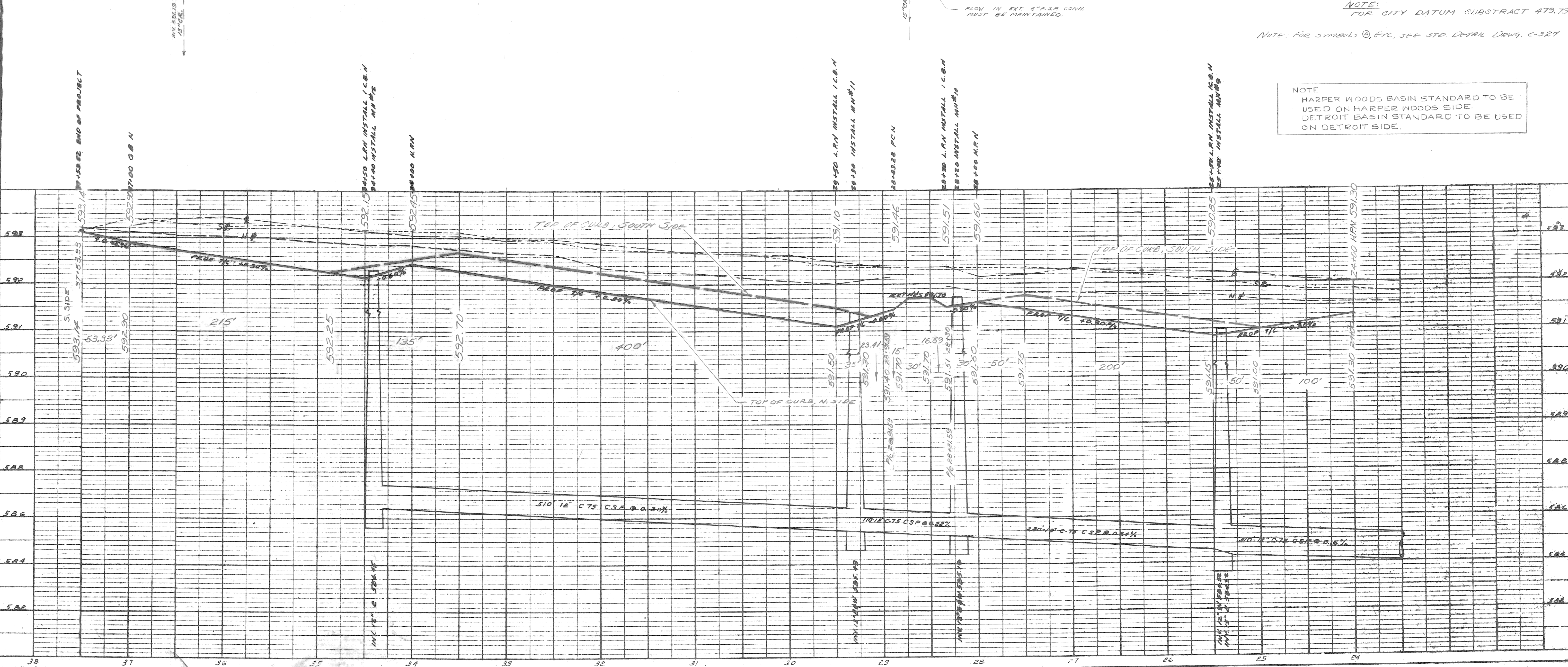
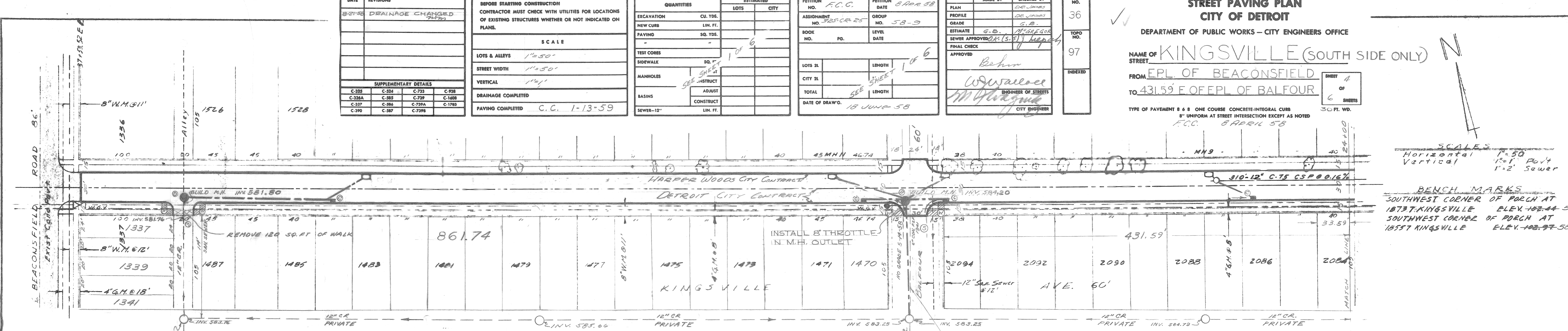
ASSIGNMENT NO.	GROUP NO.	LEVEL	DATE
F.C.C.	58-9		8 APR 58
325-CR-25	58-9		

PLAN	MADE BY	CHECKED BY
PROFILE	DE JAMES	DE JAMES
GRADE	DE JAMES	G.B.
ESTIMATE	G.B.	MEYERSON
SEWER APPROVED	(S.S.) REPORT	
FINAL CHECK		
APPROVED	Behr	
	W. Wallace	
	M. G. Grogan	

INDEX NO.	TOPO NO.	INDEXED
36	97	

DATE	BY	NO.

DATE	BY	NO.





# STREET PAVING PLAN CITY OF DETROIT

DEPARTMENT OF PUBLIC WORKS - CITY ENGINEERS OFFICE

NAME OF **KINGSVILLE (SOUTH SIDE ONLY)**

FROM **444.4' W. OF W.P.L. OF PEEERLESS**  
TO **83.62' E. OF E.P.L. OF DUPREY**

TYPE OF PAVEMENT **8" B. ONE COURSE CONCRETE-INTTEGRAL CURB**  
BY UNIFORM AT STREET INTERSECTION EXCEPT AS NOTED

F.C.C. 4-8-58

DATE	REVISIONS
3-25-58	DRAINAGE CHANGED

BEFORE STARTING CONSTRUCTION  
CONTRACTOR MUST CHECK WITH UTILITIES FOR LOCATIONS  
OF EXISTING STRUCTURES WHETHER OR NOT INDICATED ON  
PLANS.

SCALE  
LOTS & ALLEYS 1" = 50'  
STREET WIDTH 1" = 50'  
VERTICAL 1" = 1'

DRAINAGE COMPLETED  
PAVING COMPLETED C.C. 1-13-59

QUANTITIES	ESTIMATED
EXCAVATION CU. YDS.	
NEW CURB LIN. FT.	
PAVING SQ. YDS.	
TEST CORES	
SIDEWALK	
MANHOLES	
BASINS	
SEWER-12" LIN. FT.	

SECTION NO.	F.C.C.	DATE	4-8-58
ASSIGNMENT NO.	325-CR-55	GROUP	JONES
BOOK NO.		LEVEL	S.B.
NO.		DATE	12-29-58

PLAN	MADE BY	CHECKED BY
PROFILE	JONES	JONES
GRADE	JONES	JONES
ESTIMATE	S.B.	12-29-58
SEWER APPROVED	12-29-58	12-29-58
FINAL CHECK		
APPROVED	Belton	
	W.D. Wallace	
	M.S. Wagner	

36  
97  
106  
INDEXED

SCALES  
Horizontal 1" = 50'  
Vertical 1" = 2' SEWER

BENCH MARKS  
SOUTHWEST CORNER OF PORCH  
AT 20269 KINGSVILLE ELEK 59454

NOTE:  
FOR CITY DATUM, SUBTRACT 479.79

NOTE:  
FOR SYMBOLS @, ETC., SEE STD. DET. DWG. C-327

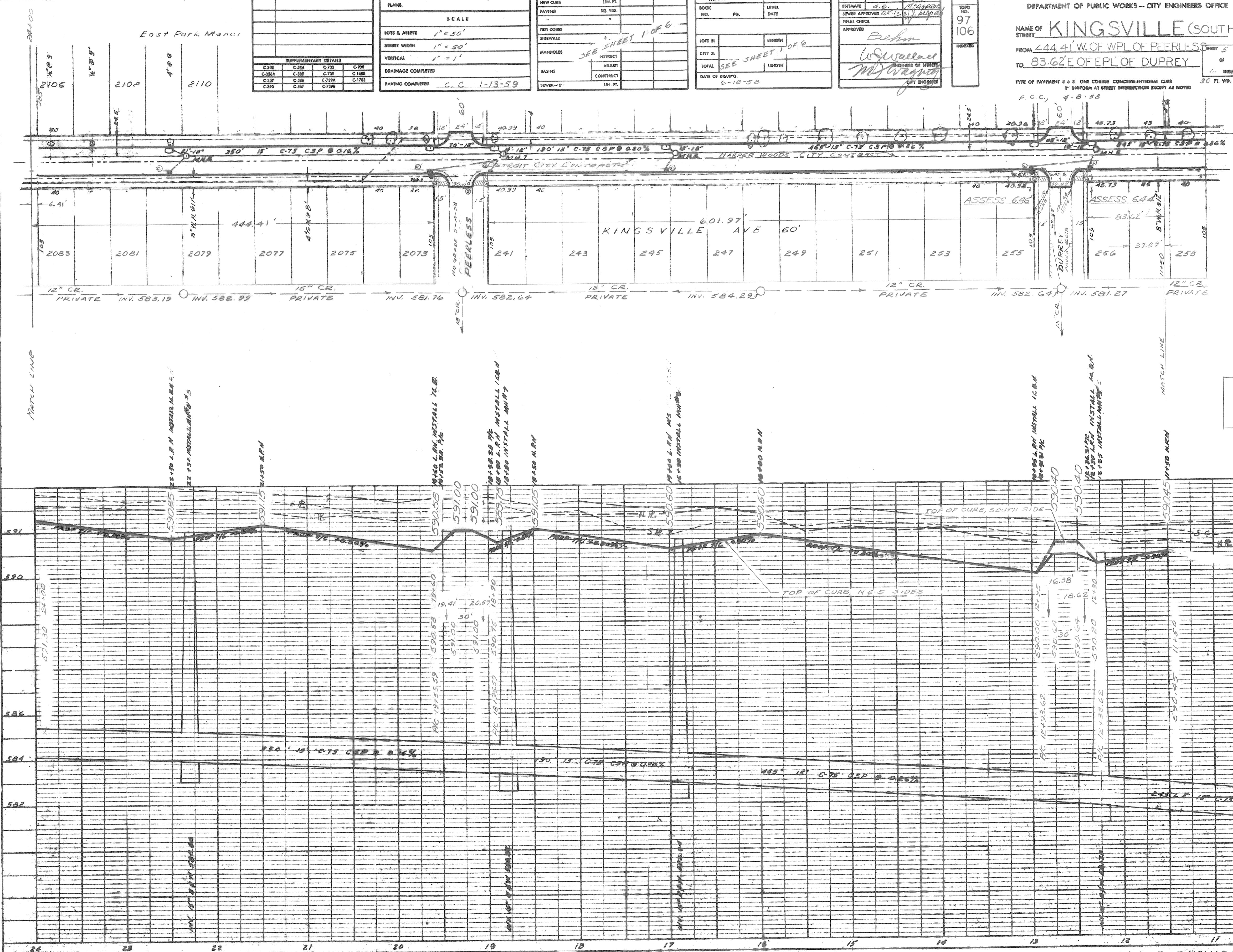
NOTE  
HARPER WOODS BASIN STANDARD TO BE  
USED ON HARPER WOODS SIDE,  
DETROIT BASIN STANDARD TO BE USED  
ON DETROIT SIDE.

DATE	BY

PLAN  
SURVEYED  
PLOTTED  
CHECKED  
NOTE BOOK NO. 106  
REL. OF WAY CHECKED

DATE	BY

PROFILE  
SURVEYED  
PLOTTED  
CHECKED  
NOTE BOOK NO. 106  
STRUCTURE NOTATIONS CHECK





DATE	REVISIONS
8-21-58	DRAINAGE CHANGED

SUPPLEMENTARY DETAILS			
C-325	C-324	C-732	C-928
C-326A	C-385	C-739	C-1409
C-327	C-386	C-739A	C-1783
C-330	C-387	C-739B	

**BEFORE STARTING CONSTRUCTION**  
CONTRACTOR MUST CHECK WITH UTILITIES FOR LOCATIONS OF EXISTING STRUCTURES WHETHER OR NOT INDICATED ON PLANS.

**SCALE**

LOTS & ALLEYS 1" = 50'  
STREET WIDTH 1" = 50'  
VERTICAL 1" = 1'

DRAINAGE COMPLETED  
PAYING COMPLETED C.C. 1-13-59

QUANTITIES		ESTIMATED	
EXCAVATION	CU. YDS.	LOTS	CITY
NEW CURB	LN. FT.		
PAVING	SQ. YDS.		
TEST CORES			
SIDEWALK			
MANHOLES			
BASINS			
SEWER-12"	LN. FT.		

PETITION NO. 7 C.C.		PETITION DATE 4-8-58	
ASSIGNMENT NO. 325-CR-25	GROUP NO. 50-9		
BOOK NO.	PG.	LEVEL	DATE
LOTS 2L	LENGTH	1 OF 6	
CITY 2L	LENGTH	1 OF 6	
TOTAL	LENGTH		
DATE OF DRAWG.	6-18-58		

MADE BY	CHECKED BY
JONES	JONES
ESTIMATE 4 B. M. P. GREGG	
SEWER APPROVED (S. J. J. J. J.)	
FINAL CHECK APPROVED	
APPROVED	
ENGINEER OF STREETS	
CITY ENGINEER	

INDEX NO. 36  
TOP NO. 106  
INDEXED

CONTRACT NO. P.W. 3447-K  
**STREET PAVING PLAN**  
**CITY OF DETROIT**  
DEPARTMENT OF PUBLIC WORKS - CITY ENGINEERS OFFICE

NAME OF STREET **KINGSVILLE (SOUTH SIDE ONLY)**  
FROM 537.83' W. OF W.P.L. OF SANILAC  
TO W.P.L. OF EDEL FORD EXP.

TYPE OF PAVEMENT 8 & 8 ONE COURSE CONCRETE-INTTEGRAL CURB  
8" UNIFORM AT STREET INTERSECTION EXCEPT AS NOTED

Horizontal Scale 1" = 50'  
Vertical Scale 1" = 1'

**BENCH MARKS**  
ON N.W. CORNER OF SANILAC AT STA. 530  
ELEV. 592.73  
ON N.E. CORNER OF SANILAC AT STA. 530  
ELEV. 592.73  
ON N.W. CORNER OF EDSEL FORD EXP. AT STA. 530  
ELEV. 590.96

NOTE:  
FOR CITY DATUM, SUBTRACT 479.79  
FOR SYMBOLS (A), ETC., SEE STD. DET. DWG. C-327

DATE	BY	REVISIONS

DATE	BY	REVISIONS

