

DATE	REVISIONS
7-24-58	RETAINING WALL CHANGES D. BOEHM

BEFORE STARTING CONSTRUCTION CONTRACTOR MUST CHECK WITH UTILITIES FOR LOCATIONS OF EXISTING STRUCTURES WHETHER OR NOT INDICATED ON PLANS.

SCALE

LOTS & ALLEYS

STREET WIDTH

VERTICAL

DRAINAGE COMPLETED

PAVING COMPLETED **C.C. - 12-16-58**

QUANTITIES		ESTIMATED	
		LOTS	CITY
EXCAVATION	CUB YDS		
NEW CURB	LINE FT		
PAVING	SQ YDS		
REINFORC			
CONCRETE	SQ FT		
MANHOLE	ADJUST		
CONSTRUCT			
ADJUST			
CONSTRUCT			
LINE FT			

PETITION NO.	PETITION DATE
ASSIGNMENT NO. <td>GROUP NO.</td>	GROUP NO.
BOOK NO.	PG.
LEVEL DATE	
LOT 21	LENGTH
CITY 21	LENGTH
TOTAL	LENGTH
DATE OF DRAWING	

MADE BY: **BOEHM**

CHECKED BY:

PLAN

PROFILE

GRADE

ESTIMATE

SEWER APPROVED

FINAL CHECK

APPROVED: *[Signature]*

ENGINEER OF STREETS

CITY ENGINEER

INDEX NO.	1
TOPO NO.	28
INDEXED	

CONTRACT NO. P.W. 3426F

STREET PAVING PLAN

CITY OF DETROIT

REVISED AS PER BULLETIN No 4

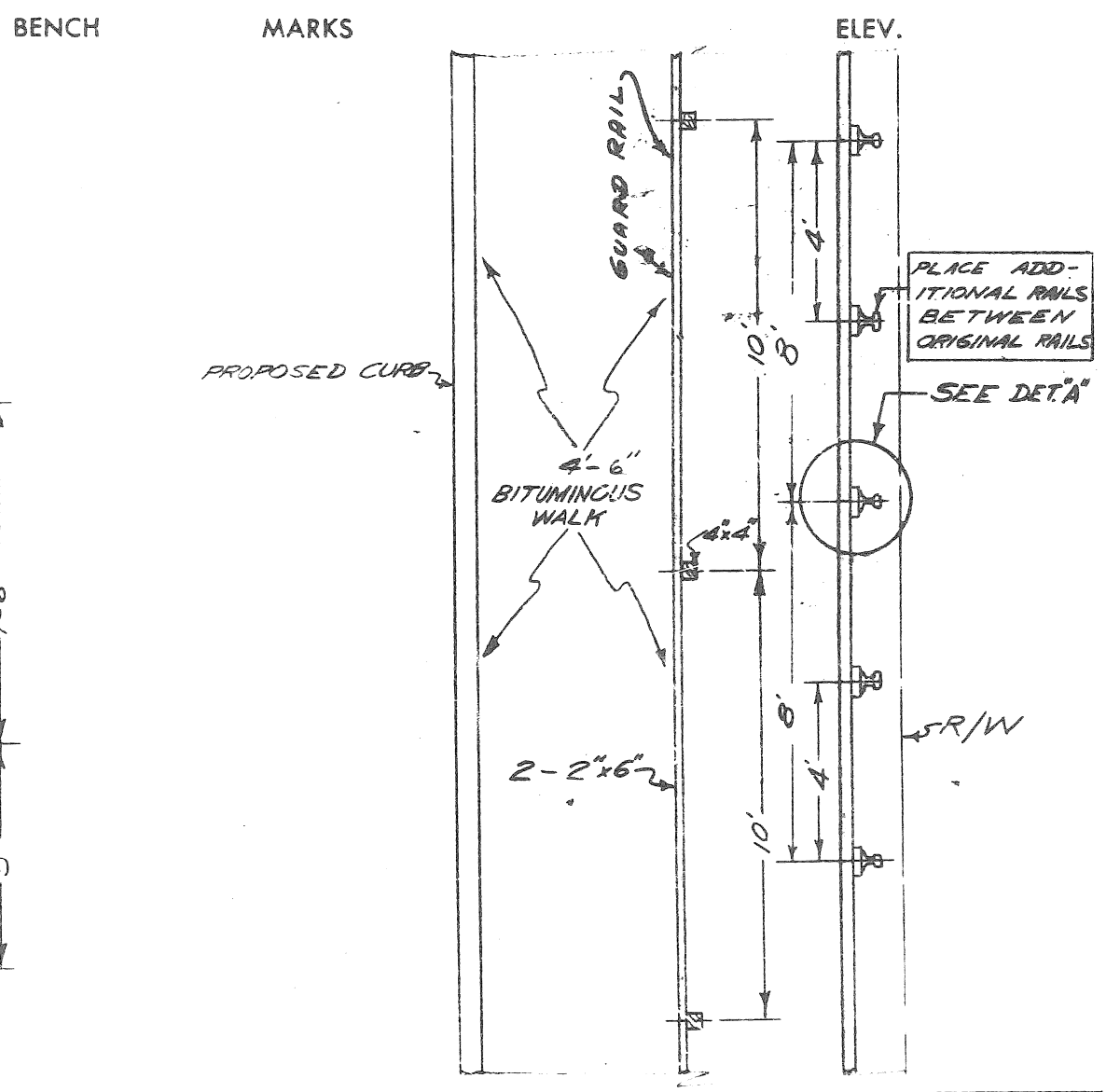
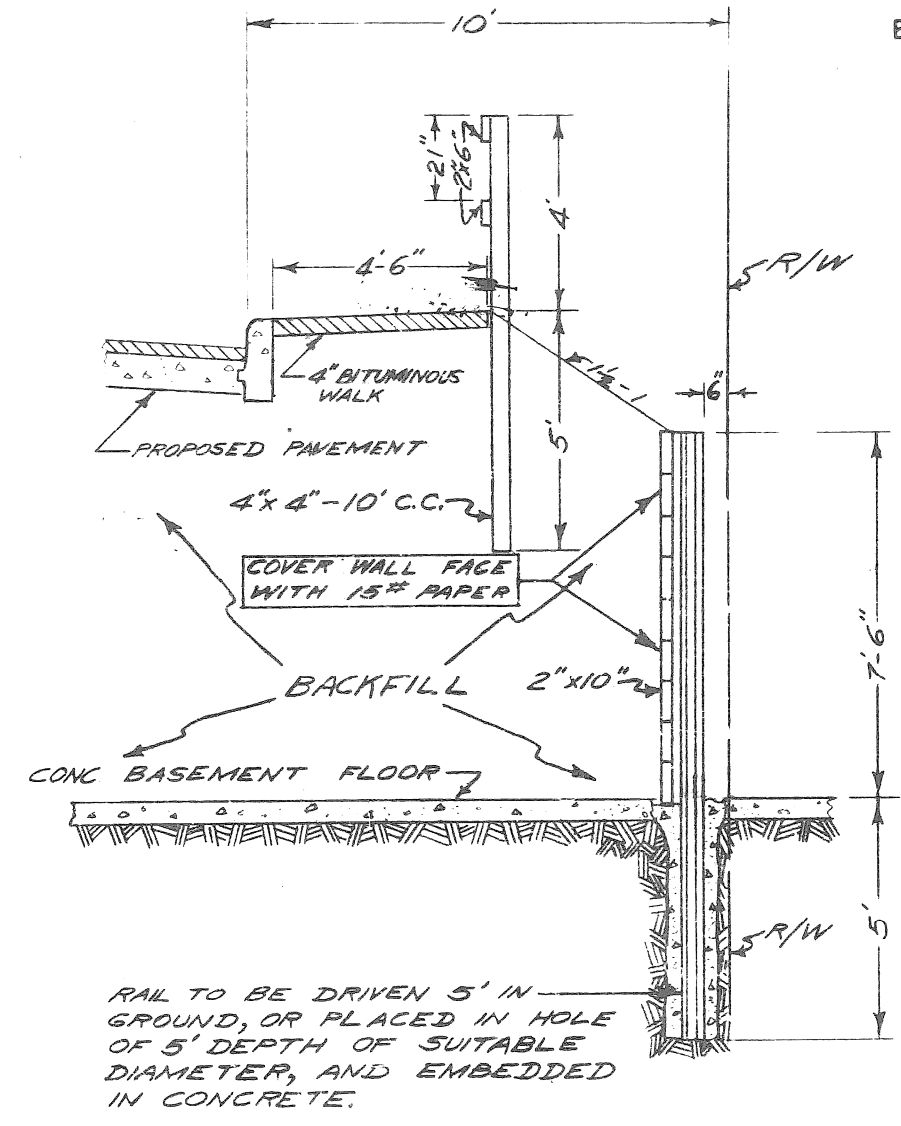
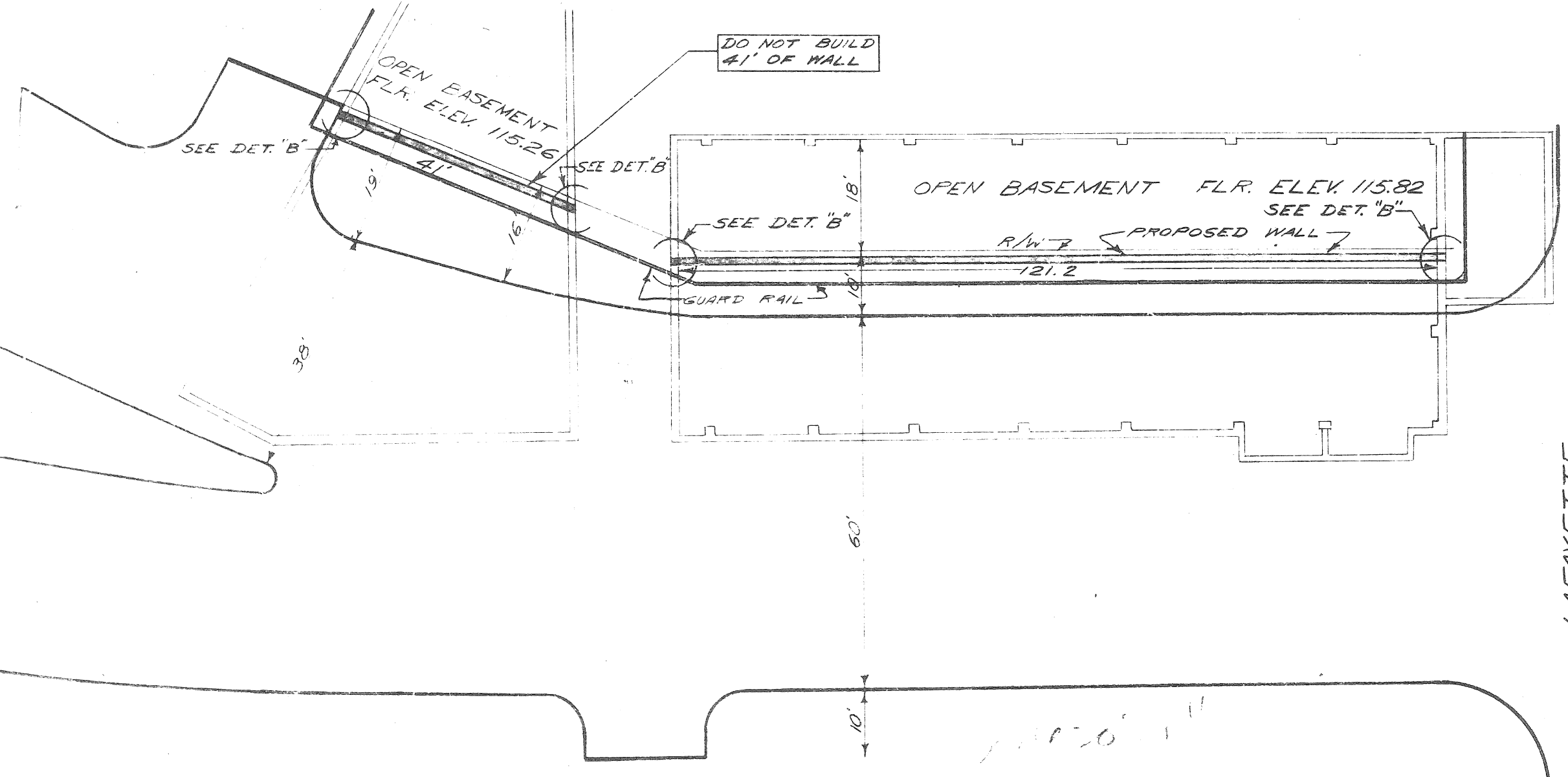
DEPARTMENT OF PUBLIC WORKS - CITY ENGINEERS OFFICE

NAME OF STREET: **WASHINGTON BLVD.**
WAYNE ST.

FROM: **RETAINING WALL**

SHEET **3**
OF
3 SHEETS

TYPE OF PAVEMENT: **ONE COURSE CONCRETE-INTegral CURB**
UNIFORM AT STREET INTERSECTION EXCEPT AS NOTED



RAIL TO BE DRIVEN 5' IN GROUND, OR PLACED IN HOLE OF 5' DEPTH OF SUITABLE DIAMETER, AND EMBEDDED IN CONCRETE.

TOTAL LENGTH OF RETAINING WALL = **162.2'**
TOTAL LENGTH OF GUARD RAIL = **240'**

