

PW-2266W

CONTRACT NO. PW 2266 W [INTERSECTI

SEWER			
REVISIONS			
SUPPLEMENTARY DETAILS			
C-324A	C-390	C-507	C-739B
C-325	C-524	C-733	C-938
C-325A	C-585	C-735	C-1608
C-327	C-536	C-739A	

NOTE:
BEFORE STARTING CONSTRUCTION CONTRACTOR MUST CHECK WITH UTILITIES FOR LOCATIONS OF EXISTING STRUCTURES WHETHER OR NOT INDICATED ON PLANS.

PLAN SCALE DISTORTED

LOTS & ALLEYS 1" = 100'
STREET WIDTHS 1" = 100'

DRAINAGE COMPLETED

PAVING COMPLETED 12/15/53

QUANTITIES	ESTIMATED		FINAL	
	LOTS	CITY	LOTS	CITY
EXCAVATION CU. YDS.		2 19 ✓		
NEW CURB II LIN. FT.		1 20 ✓		
PAVING 8" UNIF. G. YDS.		7 99 ✓		
CURB REMOVAL		1 30 ✓		
SIDEWALK 4" SQ. FT.		1 634 ✓		
MANHOLES	ADJUST	1 ✓		
	RE-CONSTRUCT	1 ✓		
BASINS	ADJUST	2 ✓		
	CONSTRUCT	1 ✓		
SEWERS-12" LIN. FT.		10 ✓		

HOR. SCALE	BOOK 1744 PAGE 54
VER. SCALE	DATE LEVELS 3-25-53 DRAWING 4-29-53
PLAN N.K.	PROFILL G.B.
CHECKED	GRADE CHECKED M.C.
LOTS 2L	LENGTH
CITY 2L	299 60 ✓ LENGTH 149 80 ✓
TOTAL 2L	299 60 ✓ LENGTH 149 80 ✓
COST ADVERTISING	
COST INSPECTION	

DESIGNED BY	
DRAWN BY	N. KAWWAS
TRACED BY	
CHECKED BY	BENM
APPROVED	
ENGINEER OF STREETS	
CITY ENGINEER	

CARD NO. 6188

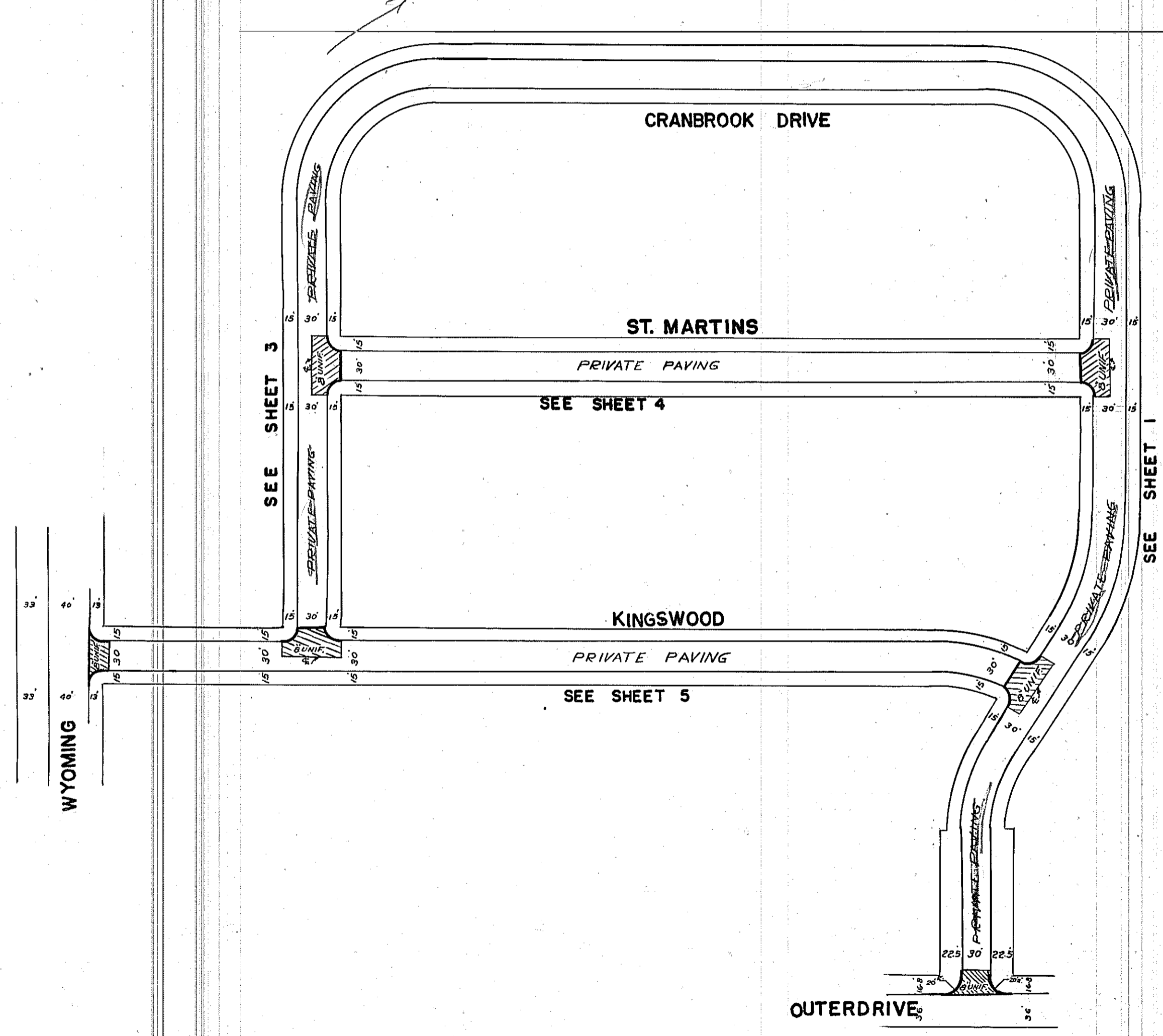
RECORD NO.

DEPARTMENT of PUBLIC WORKS
CITY ENGINEER'S OFFICE --- DIVISION OF PAVING DESIGN

STREET PAVING PLAN

INTERSECTIONS OF CRANBROOK DRIVE WITH OUTERDRIVE, KINGSWOOD & ST. MARTINS; ALSO WYOMING & KINGSWOOD INTERSECTION

TYPE OF PAVEMENT 8" UNIF. ONE COURSE CONCRETE - INTEGRAL CURB
8" UNIFORM AT STREET INTERSECTIONS EXCEPT AS NOTED



NOTE:
FOR DETAILS OF INTERSECTIONS TO BE COMPLETED ON # PW 2266W SEE MAPS OF CRANBROOK DRIVE, ST. MARTINS & KINGSWOOD.

94572