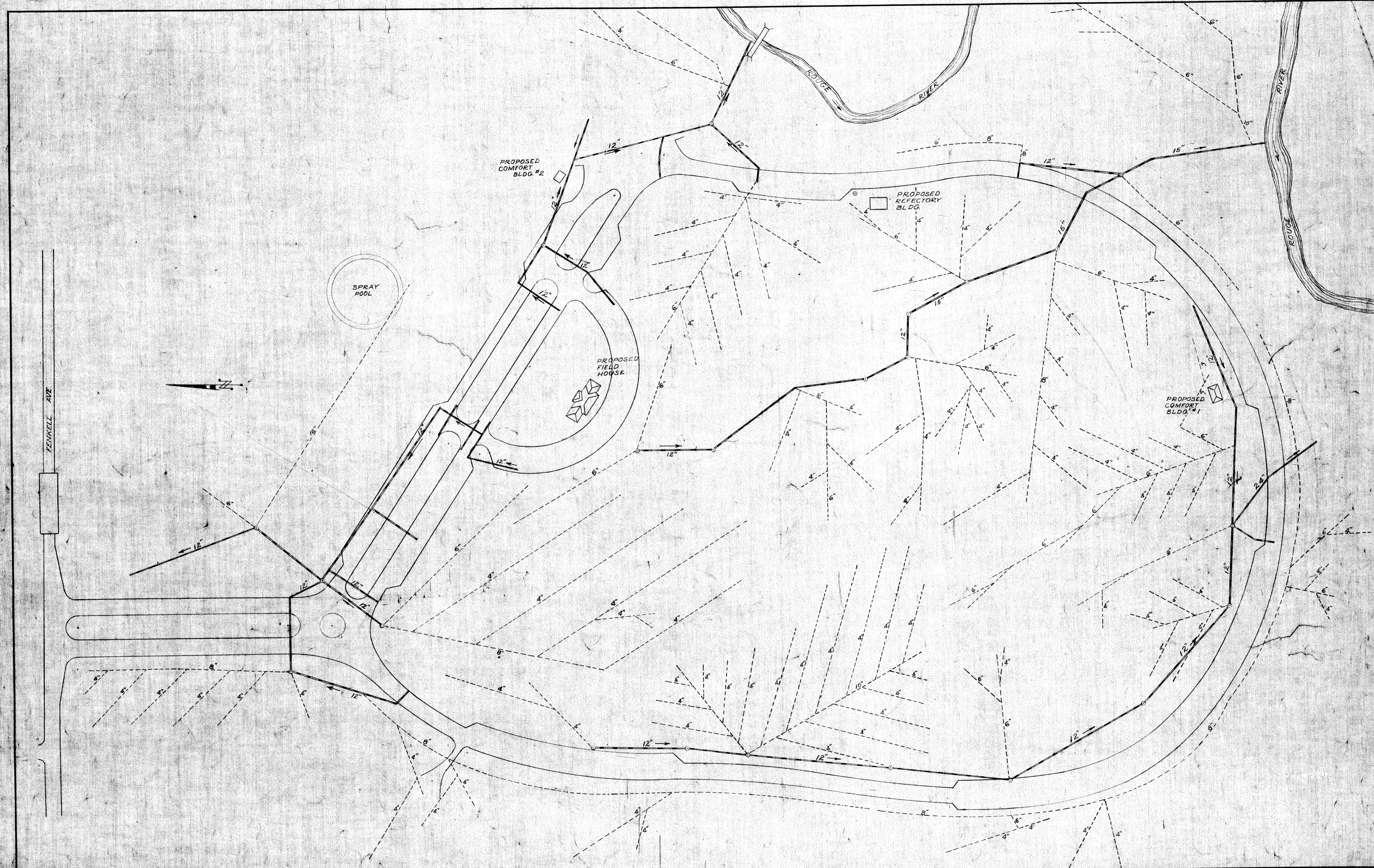


18 3-12-47
 18 4-9-47
 18 10/10/47



NOTED BY	DESCRIPTION	DATE	APPROVED DATE

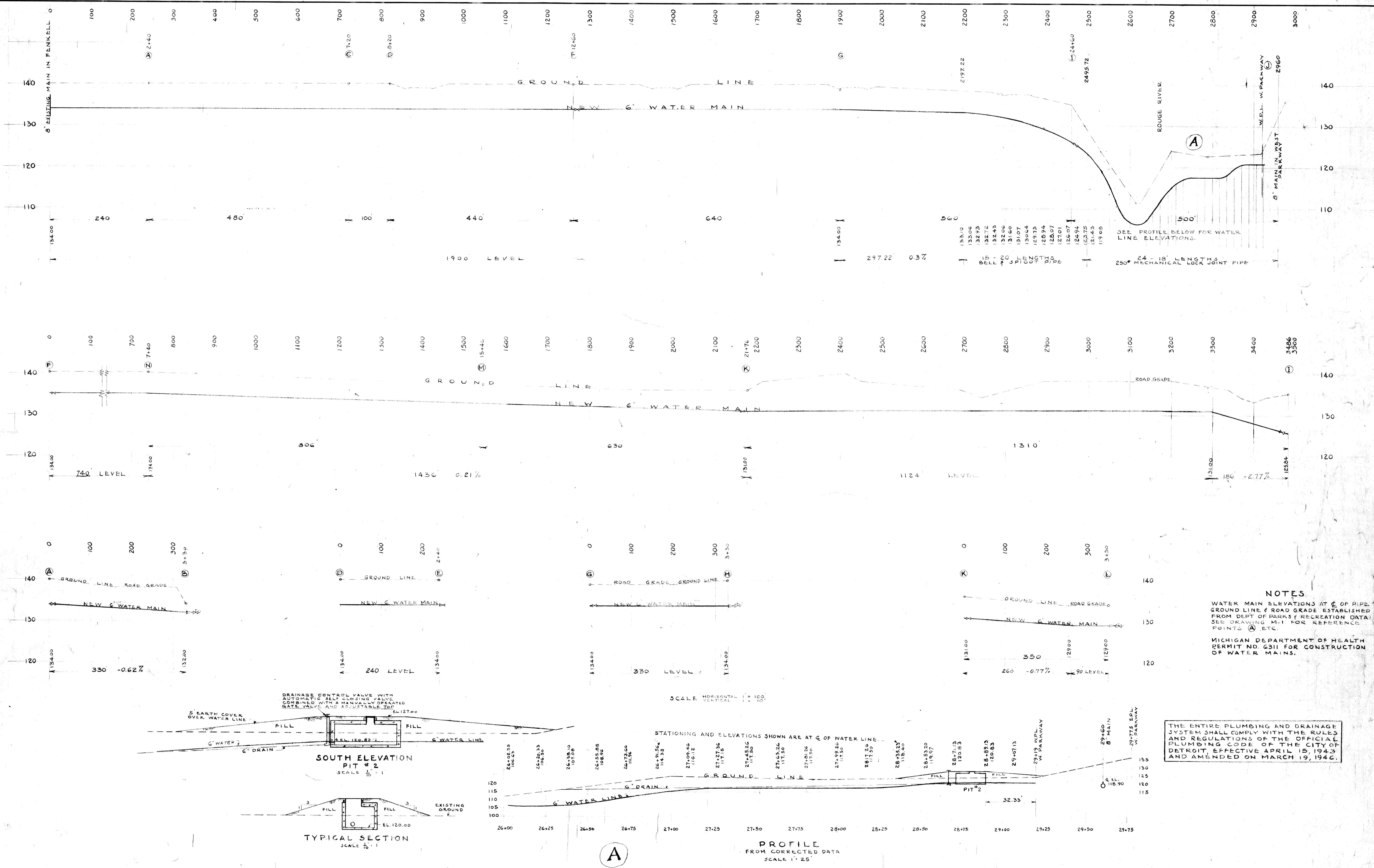
DESIGNED BY	APPROVED
DRAWN BY	<i>Wm. L. Palmer</i>
TRACED BY	SR. ASSOC. CIVIL ENG.
CHECKED BY	ENG. OF PUBLIC STRUCTURES
	CITY ENGINEER

CITY OF DETROIT
 DEPARTMENT OF PUBLIC WORKS
 CITY ENGINEERS OFFICE
 THE DEPARTMENT OF PARKS & RECREATION
 SURVEY BOOK 1388

WATER MAINS AND SEWERS
 ELIZA HOWELL PARK
 LOCATION OF EXISTING SEWERS AND TILE DRAINS

SHEET 4 OF 4 SHEETS
 JOB NO. RR-51 (AP)
 DRWG No. M-4
 DATE FEB. 12, 1947

180
 6000 3-10-47
 1P 3-12-47
 1186 4-8-47
 JBP 12/10/47



NOTES
 WATER MAIN ELEVATIONS AT C. OF PIPE, GROUND LINE & ROAD GRADE ESTABLISHED FROM DEPT. OF PARKS & RECREATION DATA. SEE DRAWING M-1 FOR REFERENCE POINTS A, ETC.
 MICHIGAN DEPARTMENT OF HEALTH PERMIT NO. 6311 FOR CONSTRUCTION OF WATER MAINS.

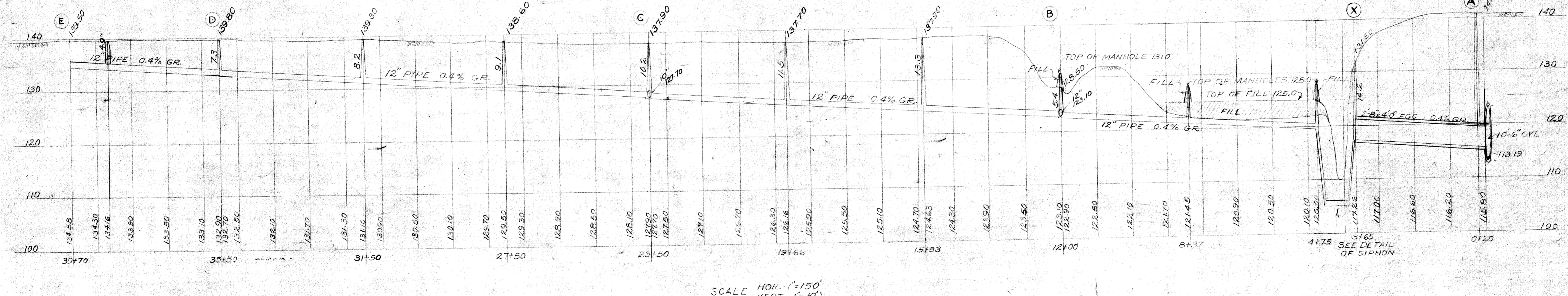
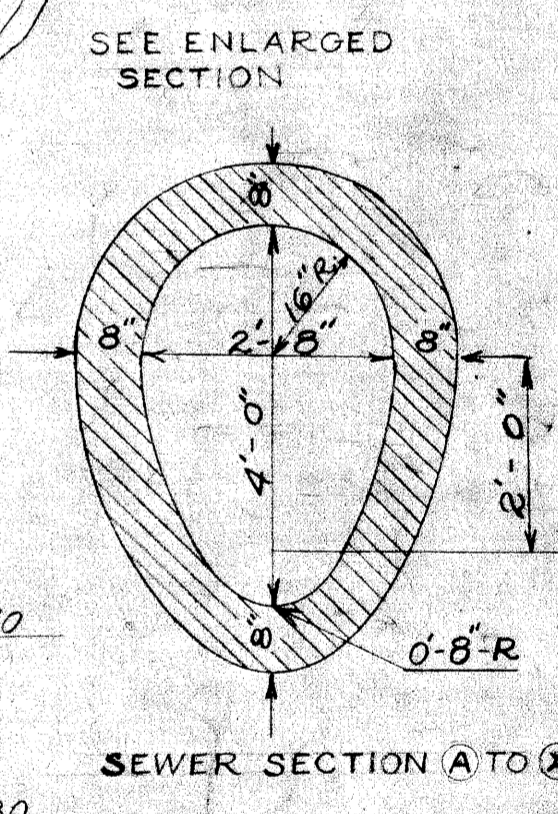
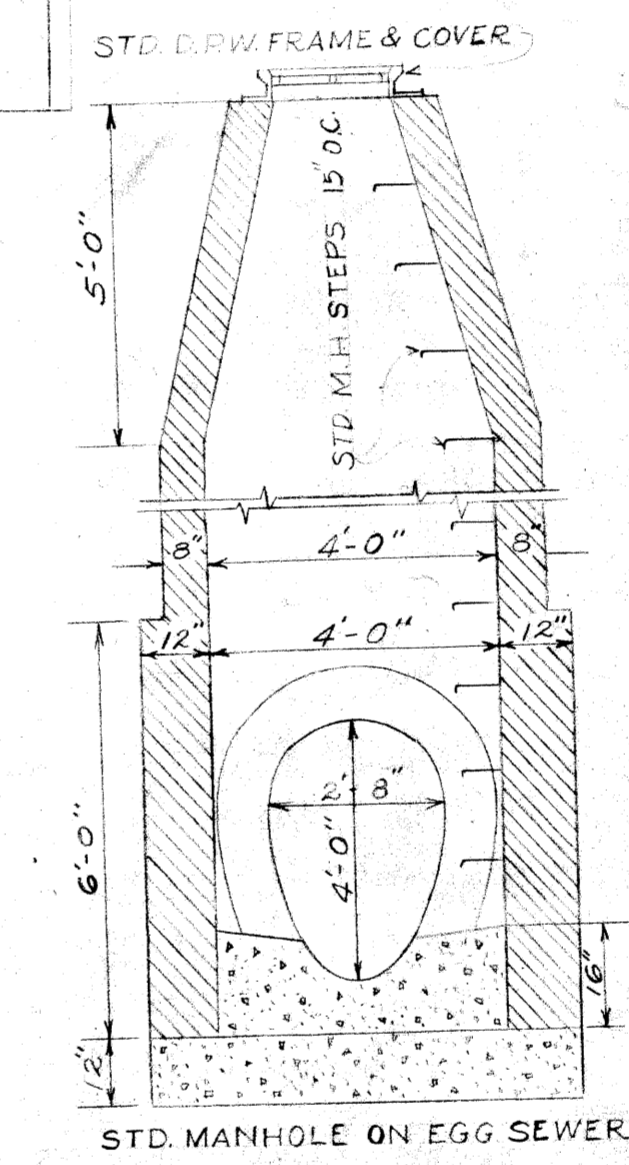
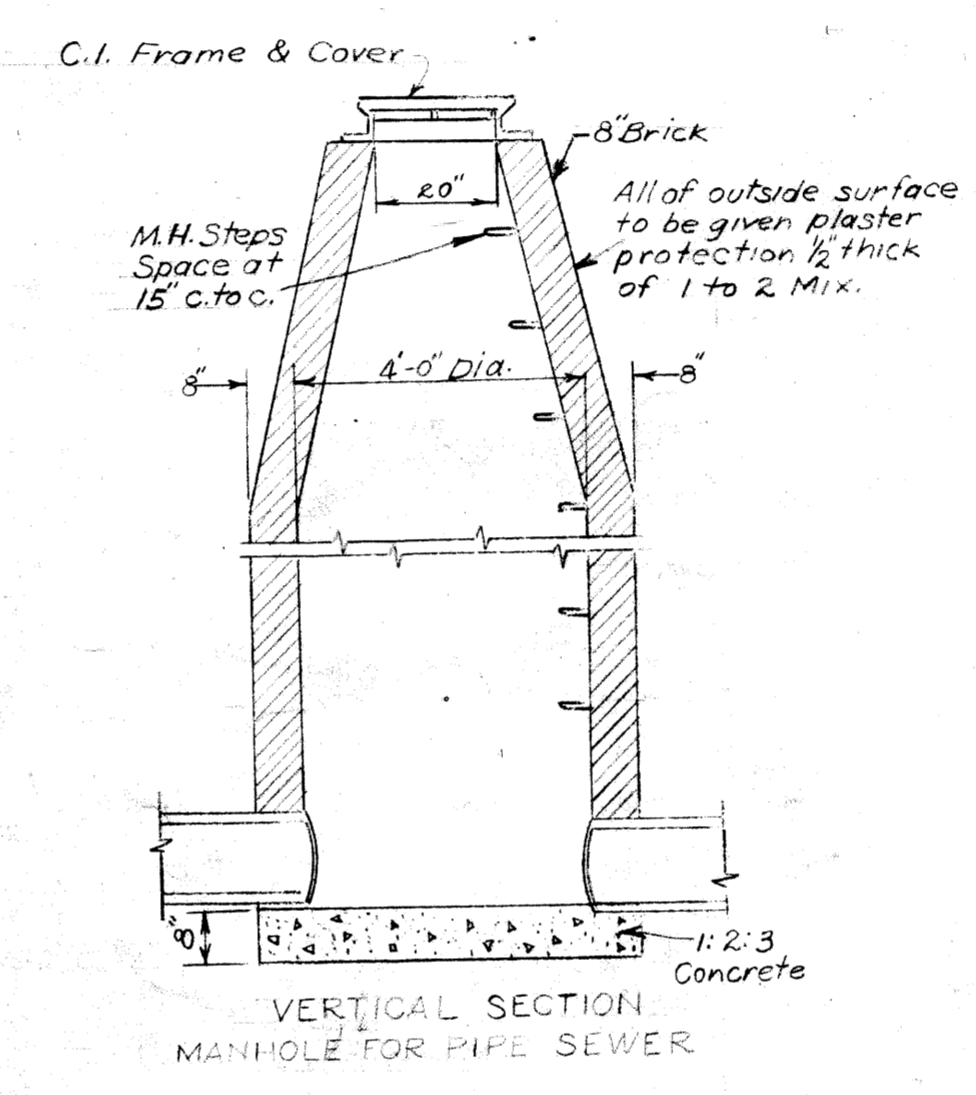
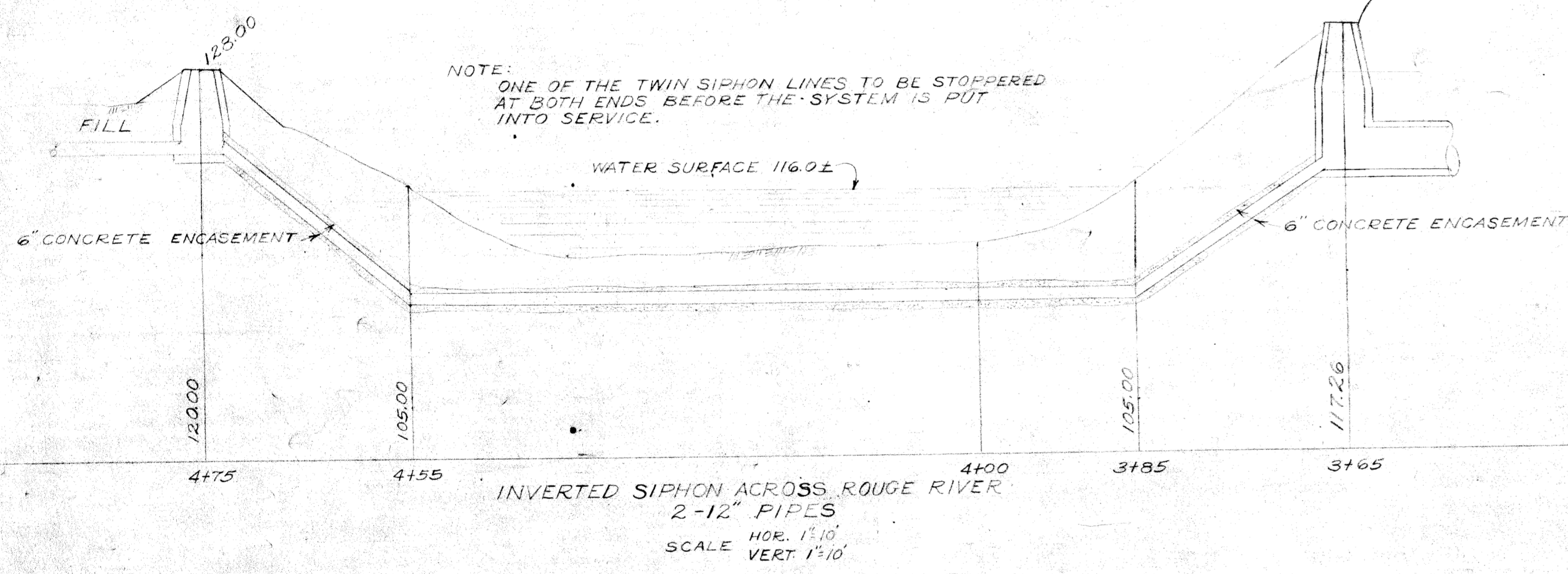
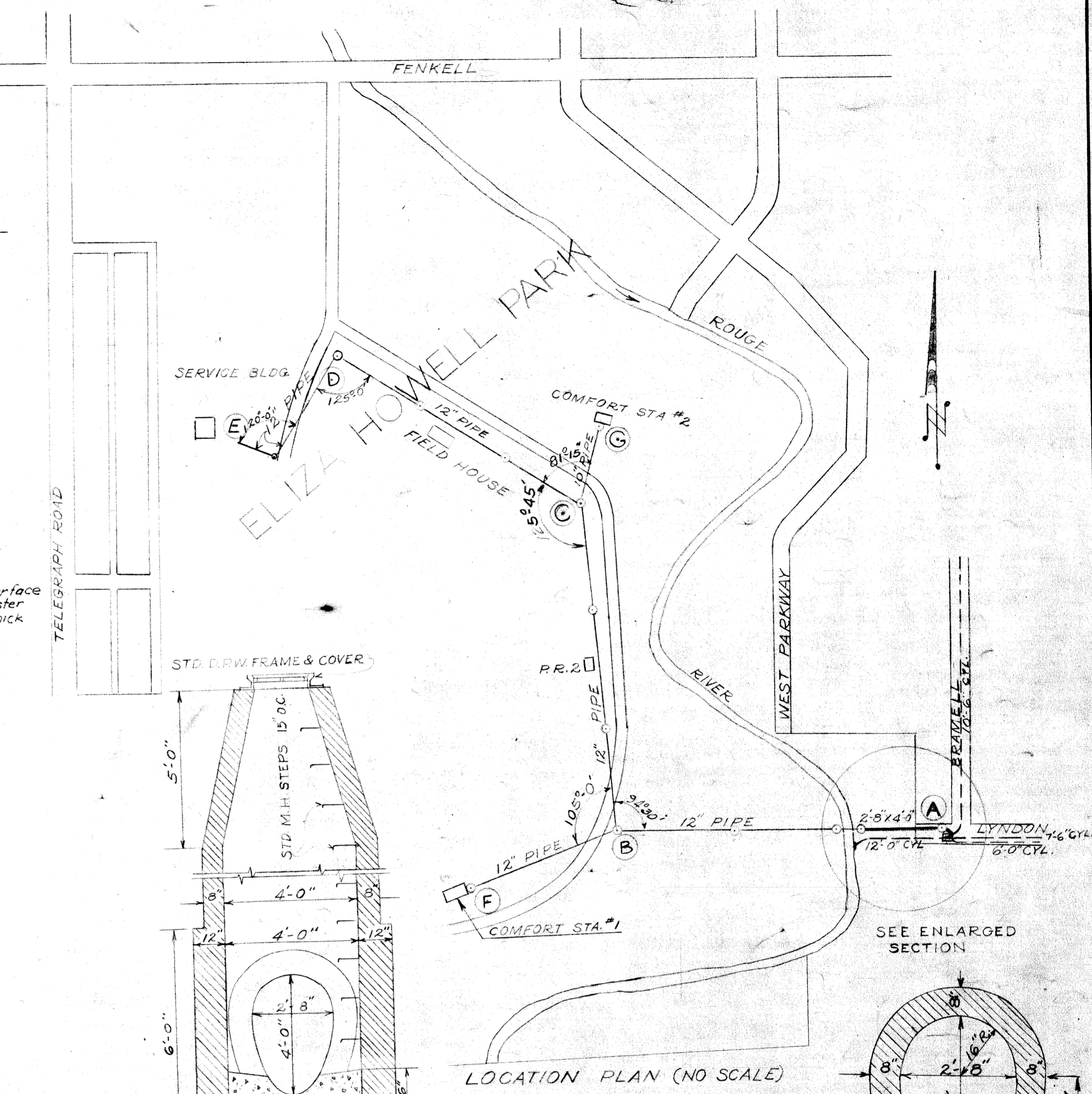
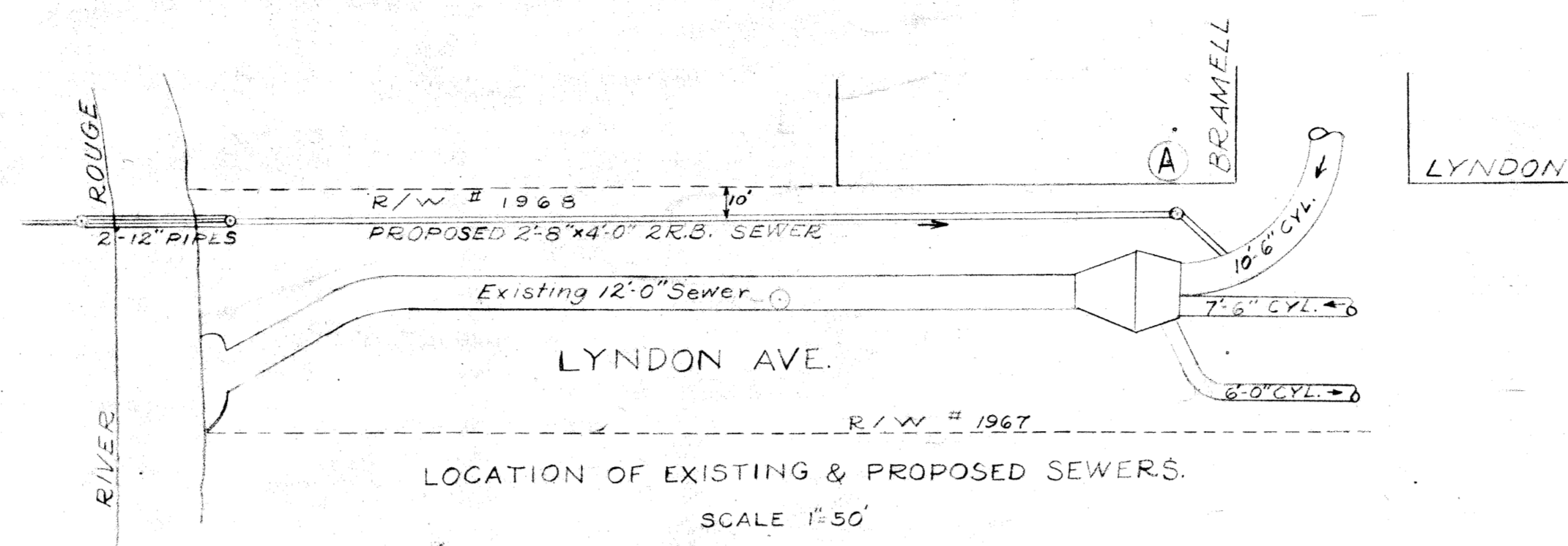
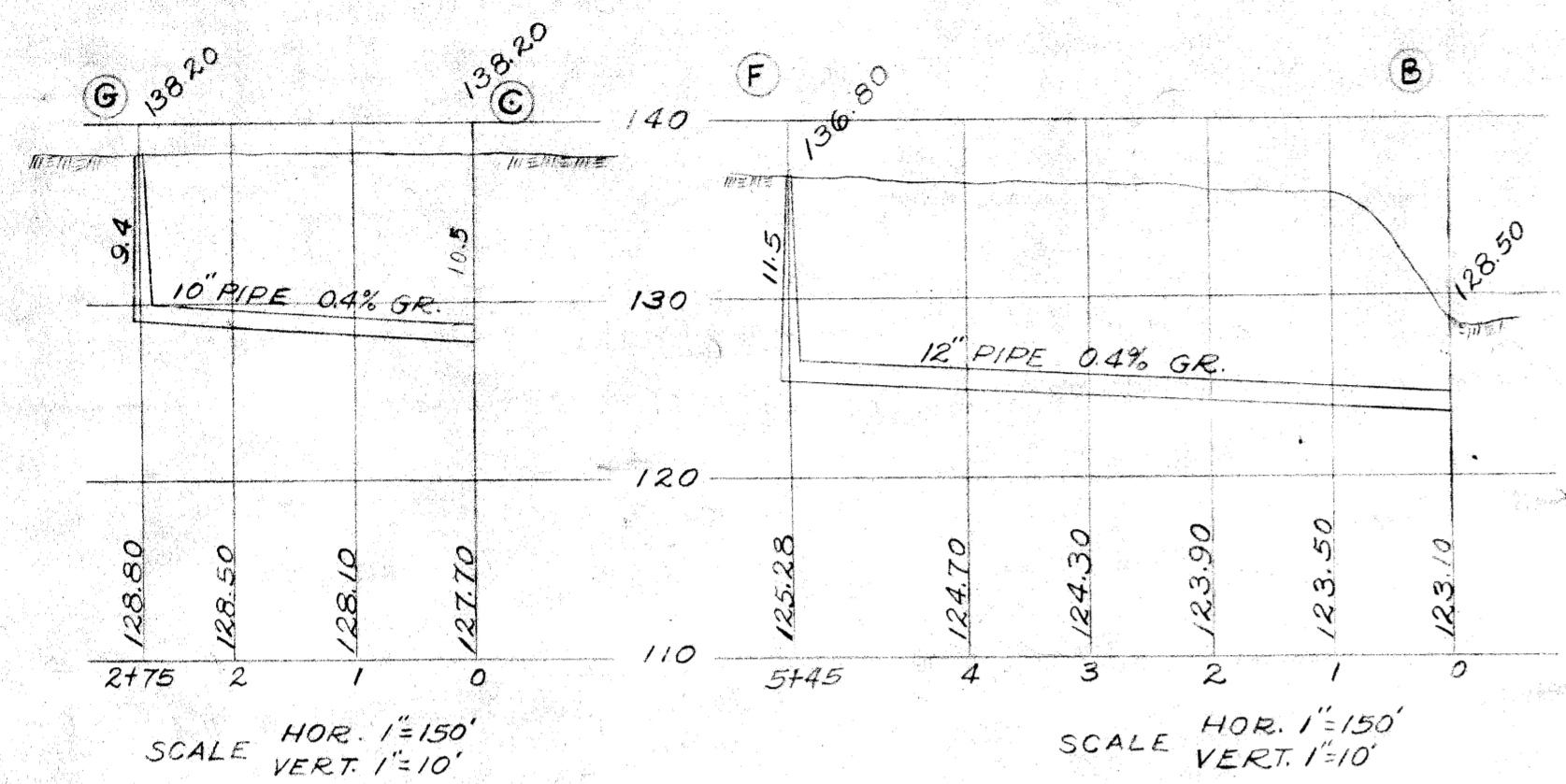
THE ENTIRE PLUMBING AND DRAINAGE SYSTEM SHALL COMPLY WITH THE RULES AND REGULATIONS OF THE OFFICIAL PLUMBING CODE OF THE CITY OF DETROIT, EFFECTIVE APRIL 15, 1943 AND AMENDED ON MARCH 19, 1944.

DESIGNED BY	<i>M. Perkins</i>	APPROVED	<i>W. Reed</i>
DRAWN BY	<i>Ben Amos</i>	OR ASSOC. MECH. ENGINEER	<i>M. J. Maguire</i>
TRACED BY	<i>Ben Amos</i>	ENGINEER OF PUBLIC STRUCTURES	<i>J. P. B. [Signature]</i>
CHECKED BY	<i>A. Lutzke</i>	CITY ENGINEER	

CITY OF DETROIT
 DEPARTMENT OF PUBLIC WORKS
 CITY ENGINEERS OFFICE
 FOR
 THE DEPARTMENT OF PARKS & RECREATION

WATER MAINS AND SEWERS		SHEET 2 OF 4 SHEETS
ELIZA HOWELL PARK		JOB NO. PR-51(AP)
PROFILE OF WATER MAIN		DRWG. NO. M-2
SCALE AS INDICATED		DATE FEB. 12, 1947

2-10-47
 3-12-47
 4-9-47
 12/10/47



NOTE: DISTANCES AND GROUND ELEVATIONS ARE SCALED FROM TOPOGRAPHICAL MAP OF DEPARTMENT OF PARKS AND RECREATION, OCT. 1944. SEWER LINES TO BE LOCATED FROM PARKS AND RECREATION DEPARTMENT PROPOSED BUILDING LOCATIONS AND THE LYNDON AVE. SEWER CONNECTION.

SCALE HOR. 1"=150' VERT. 1"=10'

NOTE: MICHIGAN DEPARTMENT OF HEALTH PERMIT NO. G326 FOR CONSTRUCTION OF SEWER SYSTEM

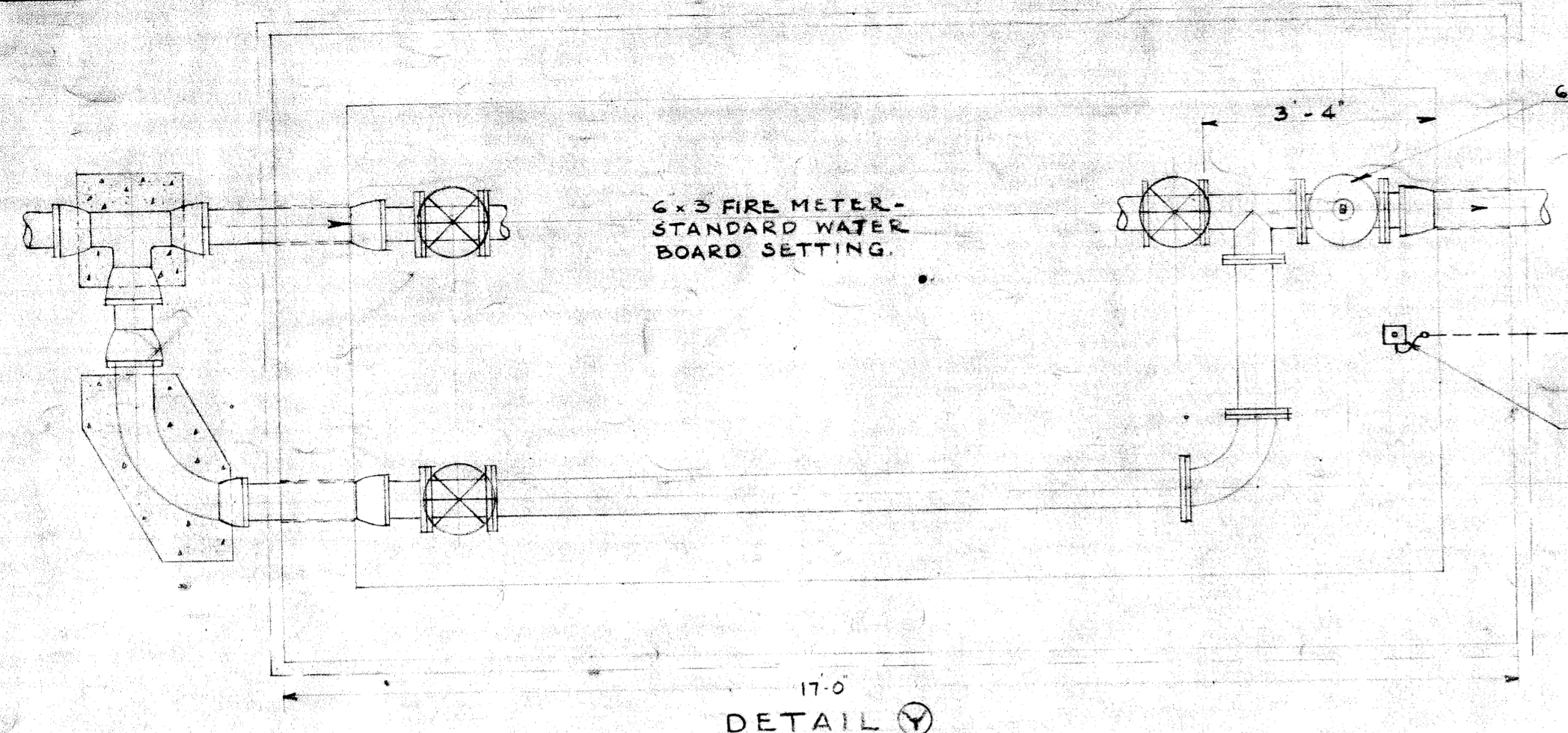
DESIGNED BY	APPROVED	CITY OF DETROIT DEPARTMENT OF PUBLIC WORKS CITY ENGINEERS OFFICE FOR THE DEPARTMENT OF PARKS AND RECREATION
DRAWN BY	SK. ASSESSOR	
TRACED BY	ENGINEER OF PUBLIC STRUCTURES	
CHECKED BY	CITY ENGINEER	
NOTED BY		
REFERENCE DRAWINGS		
DESCRIPTION	DRN. CHD. APVD. DATE	
REVISIONS		

APPROVED: *Charles L. Palmer*
 SK. ASSESSOR: *M. Maguire*
 ENGINEER OF PUBLIC STRUCTURES: *J. P. ...*
 CITY ENGINEER: *J. P. ...*

WATER MAINS AND SEWERS
 ELIZA HOWELL PARK
 SANITARY SEWER
 PLAN AND PROFILE
 SCALE AS INDICATED

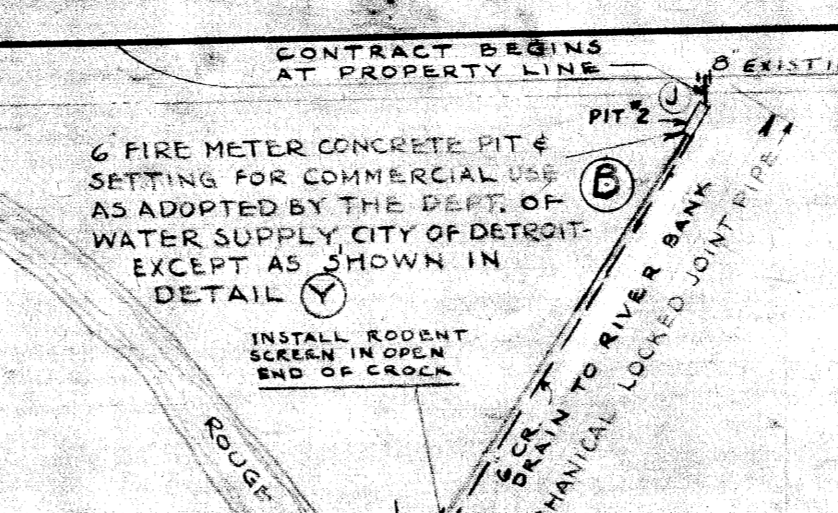
SHEET 3 OF 4 SHEETS
 JOB NO. P.R. 51 (AP)
 DRWG. NO. M-3
 DATE FEB. 12, 1947

2-10-47
 3-22-47
 4-8-47
 MAY 22 1947
 12/10/47



FLOOR DRAIN WITH
 BACK WATER VALVE
 AND TRAP IN PIT #1
 DRAINAGE CONTROL
 VALVE WITH AUTOMATIC SELF-
 CLOSING VALVE COMBINED
 WITH A MANUALLY OPERATED
 GATE VALVE AND ADJUSTABLE
 TOP AT PIT #2.

IF CONTRACT ENDS AT
 STA. 2495.72 END OF
 BELL # SP. GOT PIPE
 SEE DRAWING M-2



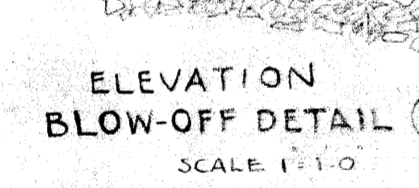
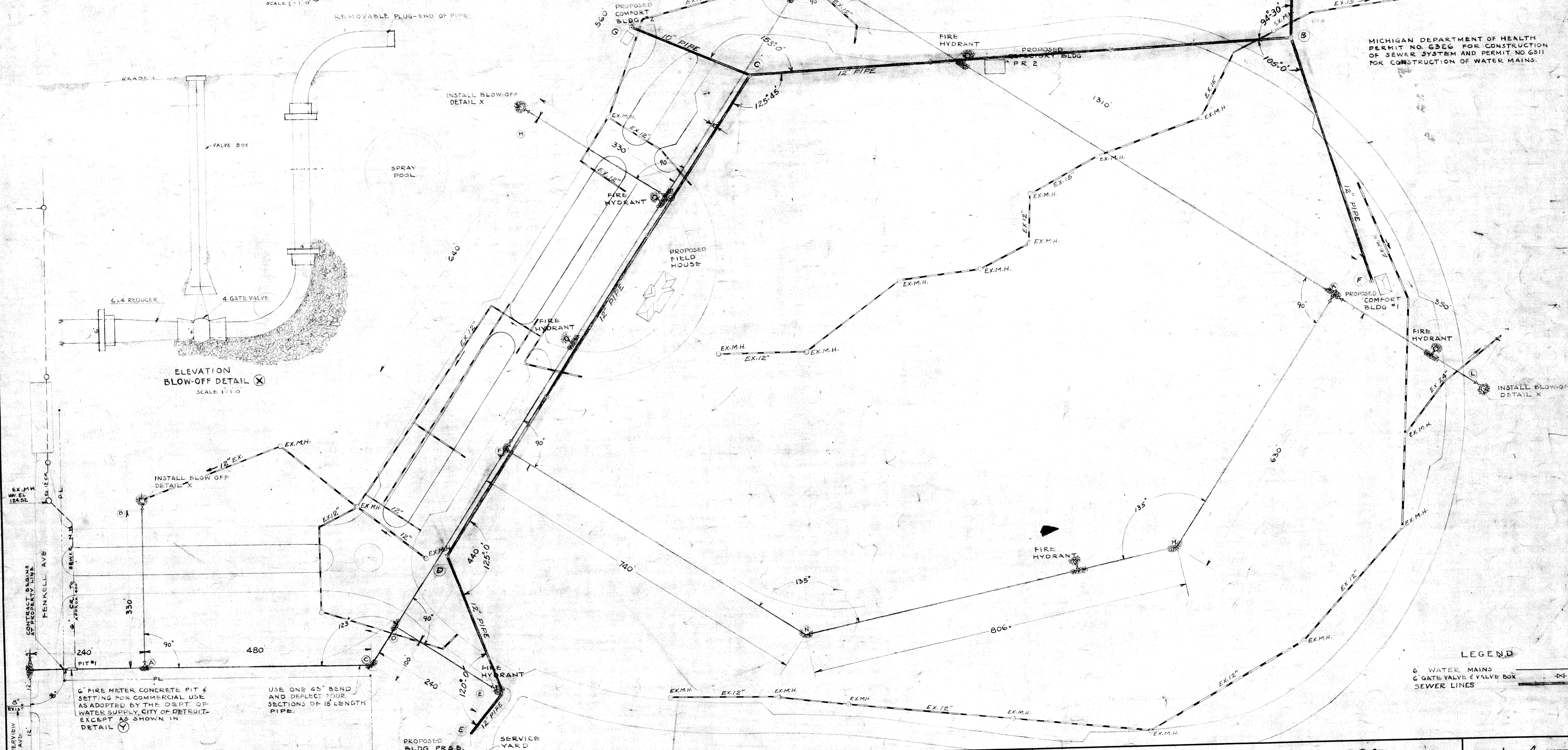
FOR REMAINDER OF
 THIS SEWER LINE SEE
 DRAWING NO. M-3.

THE ENTIRE PLUMBING AND DRAINAGE
 SYSTEM SHALL COMPLY WITH THE RULES
 AND REGULATIONS OF THE OFFICIAL
 PLUMBING CODE OF THE CITY OF
 DETROIT, EFFECTIVE APRIL 15, 1943
 AND AMENDED ON MARCH 19, 1946.

NOTES

BACKFILL WITH CRUSHED STONE,
 RUBBLE OR BRICK AND TAMP
 WELL AT FITTINGS, BLOW-OFFS,
 AND FIRE HYDRANTS.

MICHIGAN DEPARTMENT OF HEALTH
 PERMIT NO. 6326 FOR CONSTRUCTION
 OF SEWER SYSTEM AND PERMIT NO. 6311
 FOR CONSTRUCTION OF WATER MAINS.



USE ONE 45° BEND
 AND DEFLECT FOUR
 SECTIONS OF 15' LENGTH
 PIPE.

LEGEND

6 WATER MAINS
 G GATE VALVE & VALVE BOX
 SEWER LINES

NOTED BY	DESCRIPTION	DATE	DRN	CHKD	APVD	DATE
	A EX-SEWER LINES ADDED	5-22-47	OK			
	B BACK WATER VALVE CHANGED AND DRAINAGE PIPE EXTENDED AT PIT #2	5-22-47	OK			

DESIGNED BY *W. Markin*
 DRAWN BY *R. W. Simon*
 TRACED BY *R. W. Simon*
 CHECKED BY *D. J. S. Lewis*
 APPROVED: *W. C. Ladd*
 SR. ASST. MCH. ENGINEER
M. W. Haggerty
 ENGINEER OF PUBLIC STRUCTURES
J. P. Thompson
 CITY ENGINEER

CITY OF DETROIT
 DEPARTMENT OF PUBLIC WORKS
 CITY ENGINEERS OFFICE
 FOR
 THE DEPARTMENT OF PARKS & RECREATION

WATER MAINS AND SEWERS
 ELIZA HOWELL PARK
 WATER MAINS AND SEWER LAYOUT

SHEET 1 OF 4 SHEETS
 JOB NO. PR-51 (AP)
 DRWG NO. M-1
 DATE FEB. 12, 1947
 JOB 225