

Sewer Approved
7/30/76
D. J. [Signature]

DATE 8-5-76		DRAWING NO. 7400303D		CONTRACT NO. PC 406A		SHEET 1 OF 3 SHEETS	
INDEX NO. 49-50		TOP NO. 1		CONTRACT NO. PC 406A		SHEET 1 OF 3 SHEETS	
INDEX NO. 49-50		TOP NO. 1		CONTRACT NO. PC 406A		SHEET 1 OF 3 SHEETS	

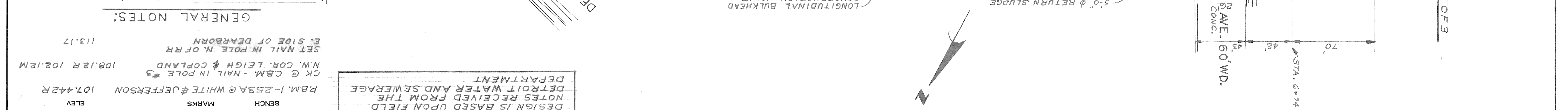
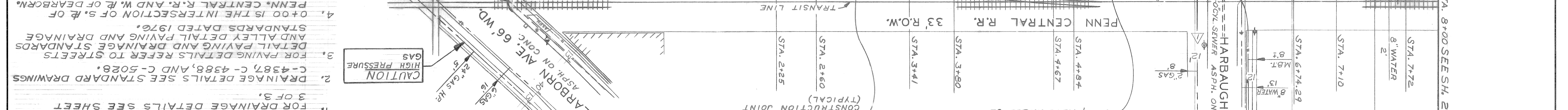
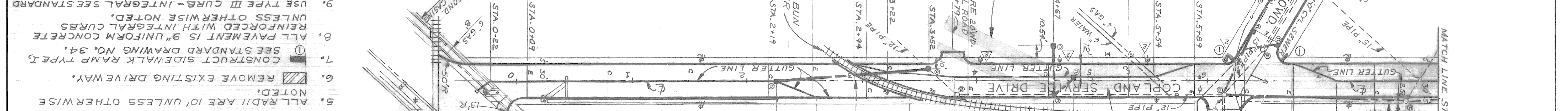
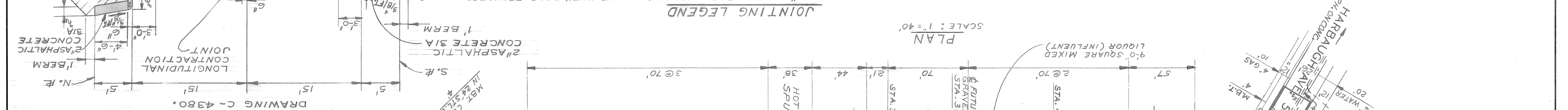
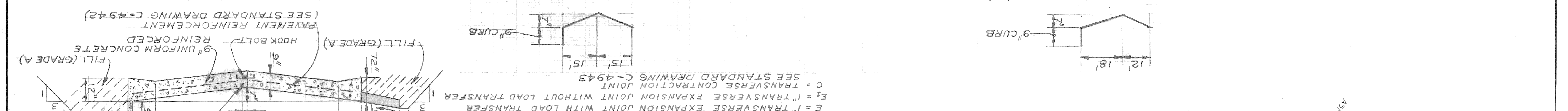
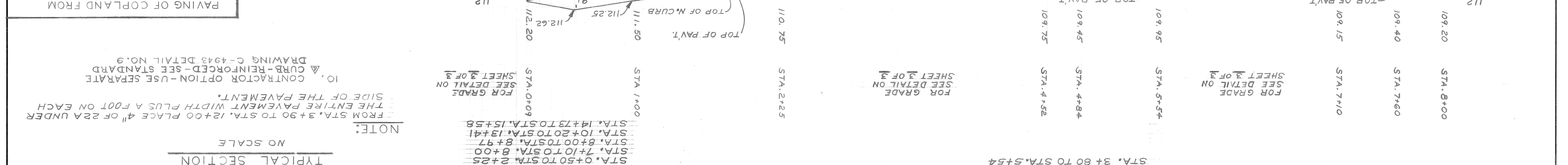
CITY OF DETROIT
CITY ENGINEERING DIVISION (E.M.D.)
FOR WATER AND SEWERAGE DEPARTMENT

PROPOSED CHANGE ORDER "K" NO. 10
COPLAND SERVICE DRIVE FROM LEIGH ST. TO DEARBORN AVE.
PAVING, DRAINAGE AND DRAINAGE STRUCTURES

NO.	DATE	DESCRIPTION
1	8-5-76	ADDED GAS LINE HARBAGH N. OF COPLAND
2	8-5-76	ADDED NOTE NO. 10
3	8-5-76	CHANGED TITLE FROM C.O."K" TO C.O."10"
4	8-5-76	CHANGED EDISON SYM. TO R.D. SYM. ON HARBAGH
5	8-5-76	AND ADDED R.D., M.B.T. & EDISON SYM. ON COPLAND

APPROVED BY: [Signature] R. ROSIK
CHECKED BY: [Signature]
ENGINEER OF STREETS

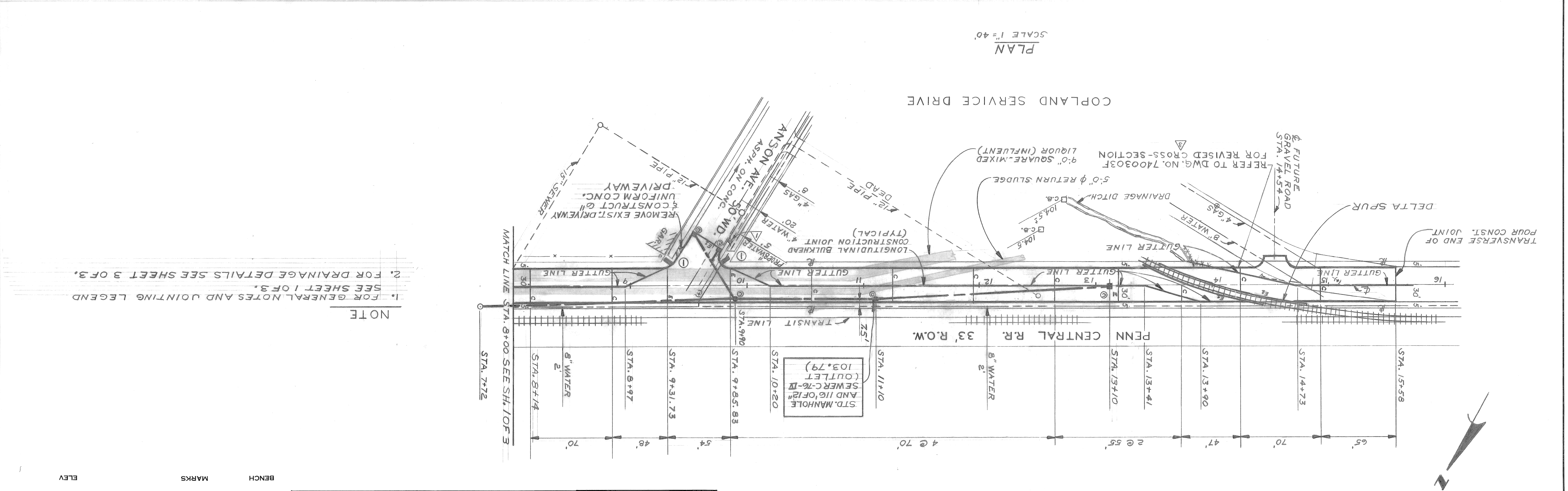
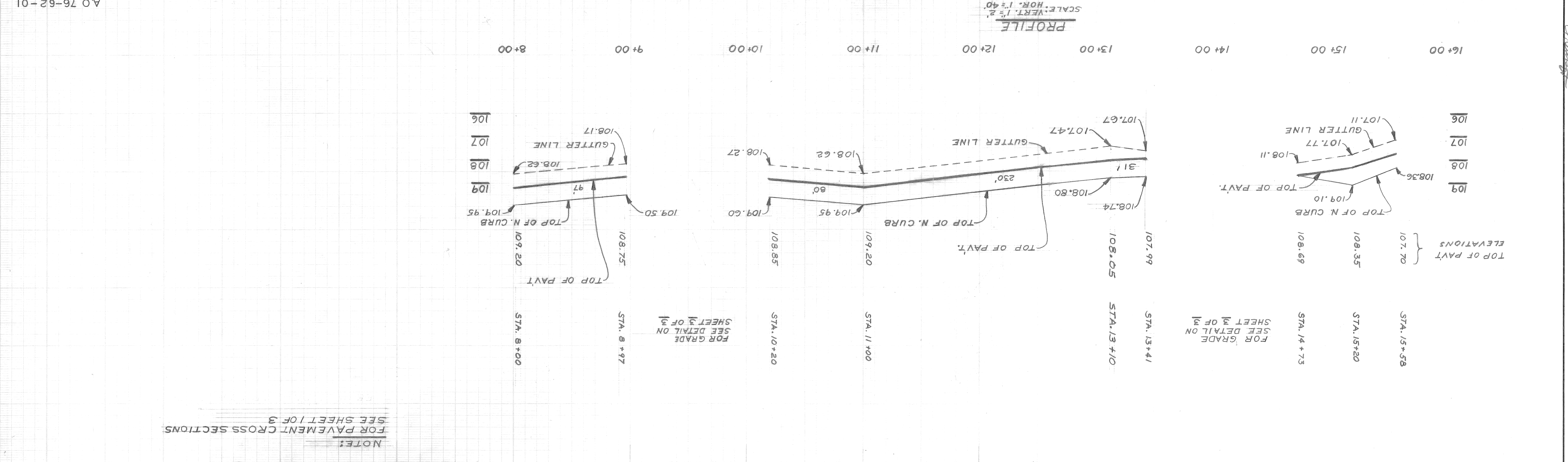
SCALE: VERT. 1" = 2'
SCALE: HOR. 1" = 40'



NO.	DATE	REVISIONS
1	8-5-76	ADDED GAS LINE HARBAGH N. OF COPLAND
2	8-5-76	ADDED NOTE NO. 10
3	8-5-76	CHANGED TITLE FROM C.O."K" TO C.O."10"
4	8-5-76	CHANGED EDISON SYM. TO R.D. SYM. ON HARBAGH
5	8-5-76	AND ADDED R.D., M.B.T. & EDISON SYM. ON COPLAND

Sewer Approved
7/30/76
B. G. ...

REVISIONS CHANGED EDISON POLE SYM. TO P.D. SYM. ON ANSON CHANGED TITLE FROM C.O.K. TO C.O. "10" ADDED NOTE		PLAN R. Rosik	GRADE ESTIMATE	CHECKED BY APPROVED BY ENGINEER OF STREETS	CITY OF DETROIT CITY ENGINEERING DIVISION (E.M.D.) FOR WATER AND SEWERAGE DEPARTMENT	PROPOSED CHANGE ORDER "K" NO. 10 COPLAND SERVICE DRIVE FROM LEIGH ST TO DEARBORN AVE. PAVING, DRAINAGE, AND DRAINAGE STRUCTURES	INDEX NO. SHEET 2 OF 3 SHEETS CONTRACT NO. PC 406A DRAWING NO. 7400303E DATE 8-5-76
---	--	------------------	-------------------	--	---	---	---



NOTE - FOR SYMBOLS ETC. SEE STANDARD DETAIL DRAWING NO. C-177 CONTRACTOR DATE LEVEL BOOK PG. NO.	SCALE HORIZONTAL 1" = 40' VERTICAL 1" = 2' DATE NO.	BENCH MARKS ELEV.
--	---	----------------------

Sewer Approved
7/20/16
C. Rosik

BRUNING 00731

NO.	DATE	DESCRIPTION
1	7/20/16	Added 1' of road elevation
2	7/20/16	CHANGED TITLE FROM C.O.R. TO C.O.P.
3	7/20/16	CHANGED PAVEMENT DETAILS & SECTION
4	7/20/16	CHANGED TITLE FROM C.O.R. TO C.O.P.
5	7/20/16	CHANGED TITLE FROM C.O.R. TO C.O.P.
6	7/20/16	CHANGED TITLE FROM C.O.R. TO C.O.P.
7	7/20/16	CHANGED TITLE FROM C.O.R. TO C.O.P.
8	7/20/16	CHANGED TITLE FROM C.O.R. TO C.O.P.
9	7/20/16	CHANGED TITLE FROM C.O.R. TO C.O.P.
10	7/20/16	CHANGED TITLE FROM C.O.R. TO C.O.P.
11	7/20/16	CHANGED TITLE FROM C.O.R. TO C.O.P.

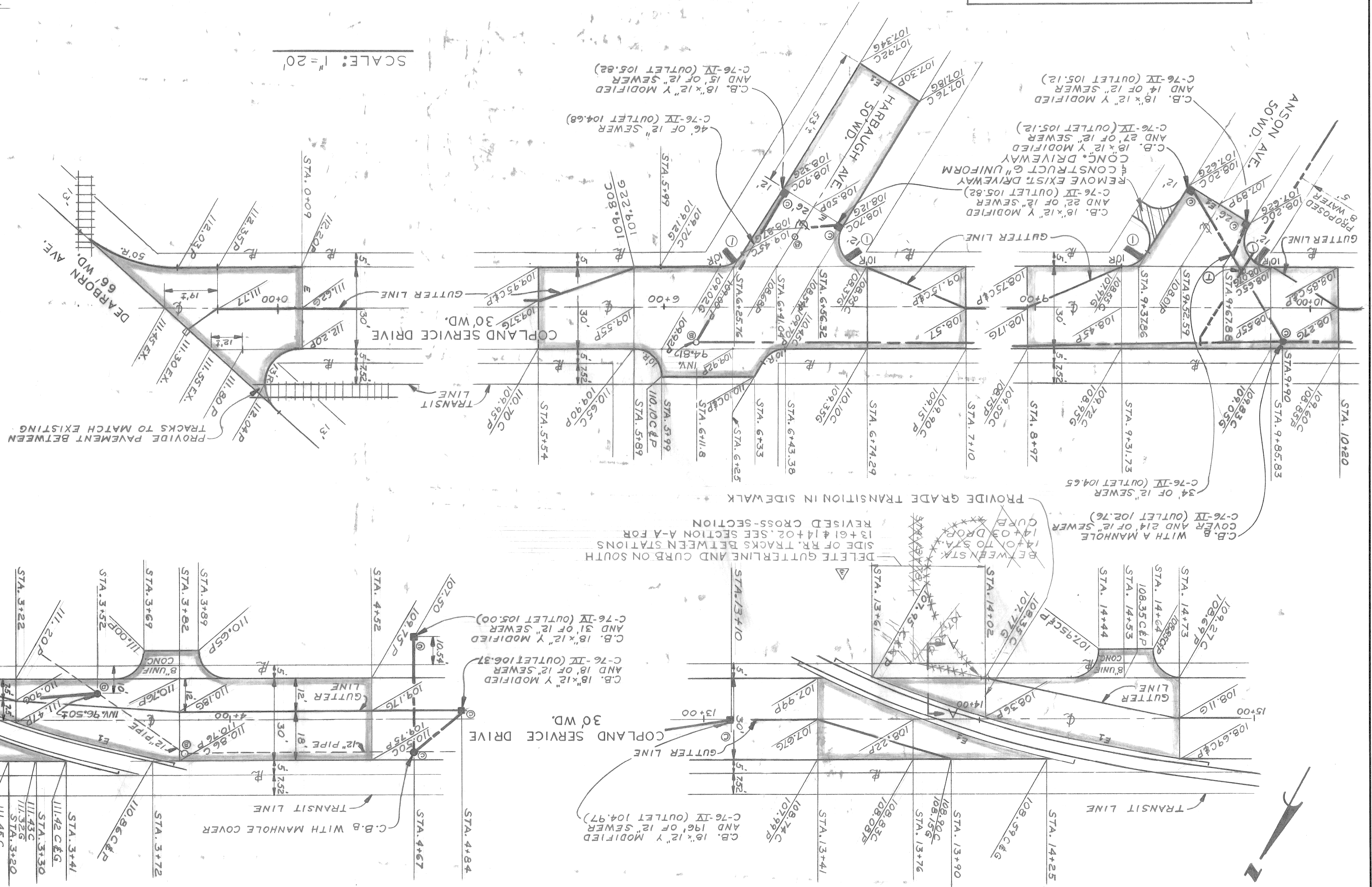
DESIGNED BY	DRAWN BY	CHECKED BY	APPROVED
M. Rosik	M. Rosik	M. Rosik	M. Rosik

CITY OF DETROIT
CITY ENGINEERING DIVISION (E.M.D.)
FOR
WATER AND SEWERAGE DEPARTMENT

DATE	DRWG NO.	CONTRACT NO.	SHEET NO.
8-5-76	7400303F	PC 406A	3 OF 3 SHEETS

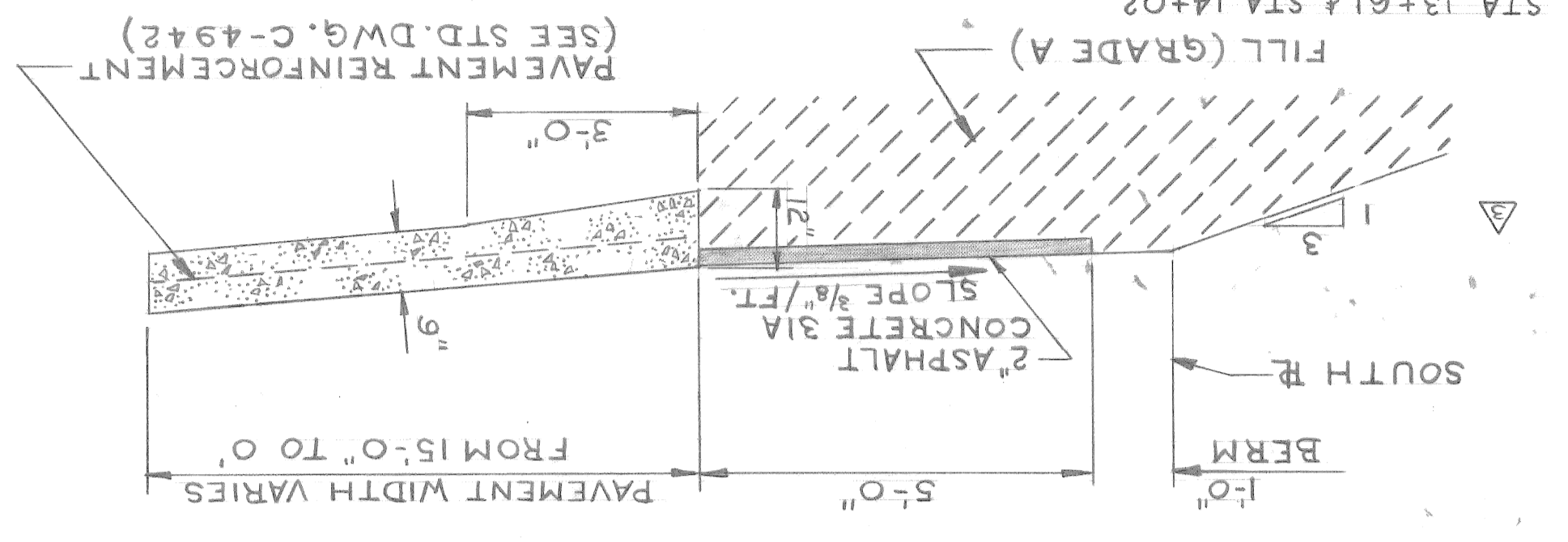
PROPOSED CHANGE ORDER NO. 10
COPLAND SERVICE DRIVE FROM LEIGH ST TO DEARBORN AVE.
PAVING, DRAINAGE AND DRAINAGE STRUCTURES

① = WHERE 12" SEWER LINE CROSSES OVER THE PROPOSED 8" WATER LINE, ENCASE THE 12" SEWER LINE WITH CLASS A CONCRETE FOR A DISTANCE OF 3' ON EACH SIDE OF THE 8" WATER LINE FOR A TOTAL OF 6'.



SCALE: 1" = 20'

SECTION A-A
SCALE 1/2" = 1'-0"



- NOTES:
- FOR GENERAL NOTES AND JOINTING LEGEND SEE SHEET 1 OF 3.
 - UNLESS OTHERWISE NOTED, ALL DRAINAGE LINES ARE 0.5% SLOPE.

FORM NO. 399-318