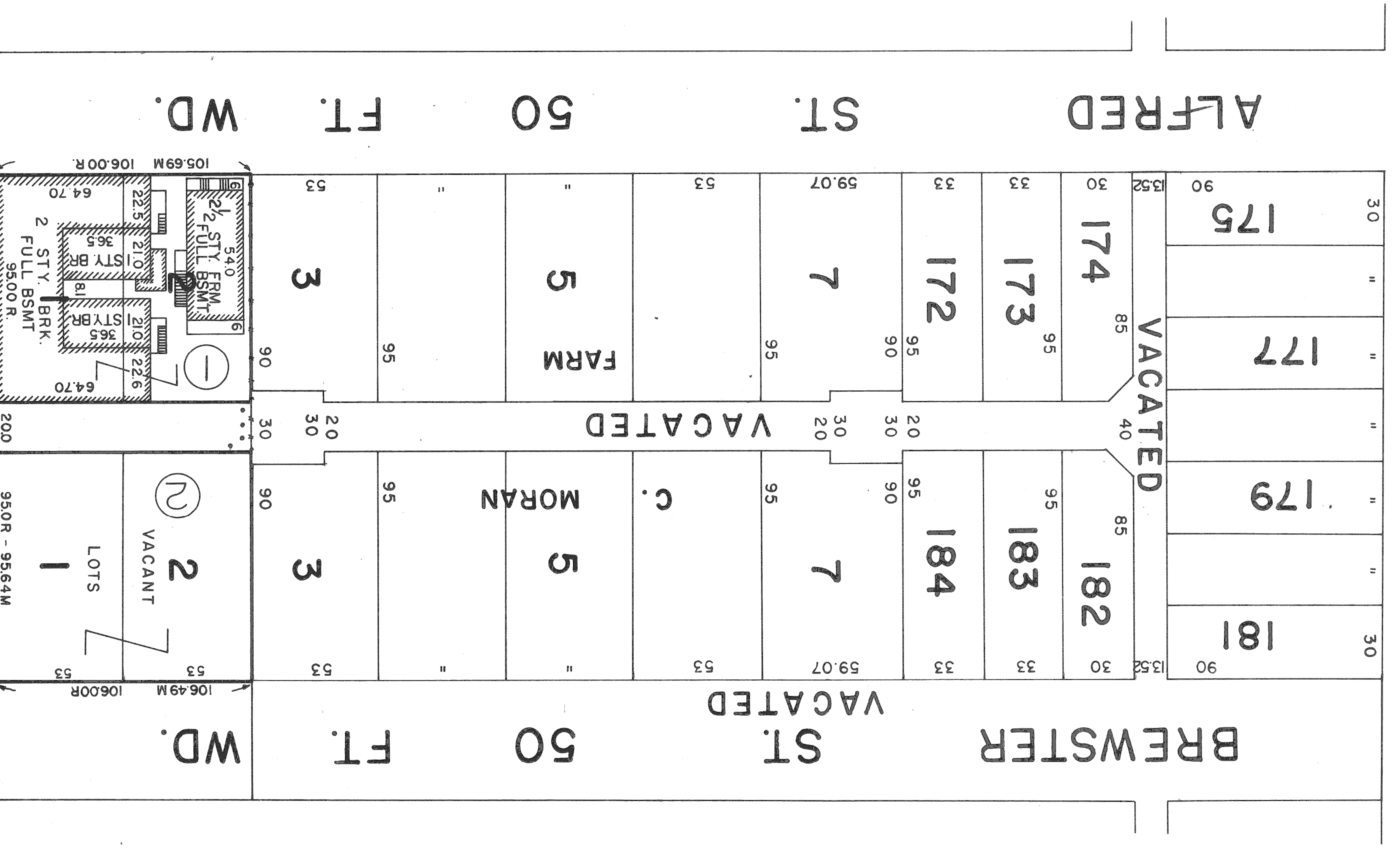


ST. ANTOINE ST. 50 FT. WD.



I HEREBY CERTIFY THAT THE PORTION OF THIS PLAT IN HEAVY OUTLINE SHOWS PROPERTY TO BE ACQUIRED BY THE CITY OF DETROIT FOR THE EXTENSION OF BREWSTER RECREATION CENTER IN ACCORDANCE WITH A RESOLUTION OF THE COMMON COUNCIL ON MARCH 12, 1968 J.C.C. PGS. 459 - 460.

Agnes Bonardine
CITY ENGINEER

CONDEMNATION DRAWING FOR THE EXTENSION OF THE BREWSTER PLAYGROUND IN THE AREA BOUNDED BY ST. ANTOINE, BREWSTER, CHRYSLER FREEWAY & ALFRED.

CITY OF DETROIT
DEPARTMENT OF PUBLIC WORKS
CITY ENGINEERS OFFICE

REVISIONS LOCATED BY COORDINATES ON SHEET	NO.	DATE	DESCRIPTION

DESIGNED BY	Walter Williams
DRAWN BY	DJP
TRACED BY	
CHECKED BY	E. Robbins

APPROVED:	<i>Walter Williams</i>	ENGINEER OF SURVEY
	<i>R. R. Hicks</i>	ASSISTANT CITY ENGINEER
	<i>Agnes Bonardine</i>	CITY ENGINEER

SHEET OF SHEETS	
CONTRACT NO.	MO2 27-330
DRWG NO.	S-439
DATE	7-19-68