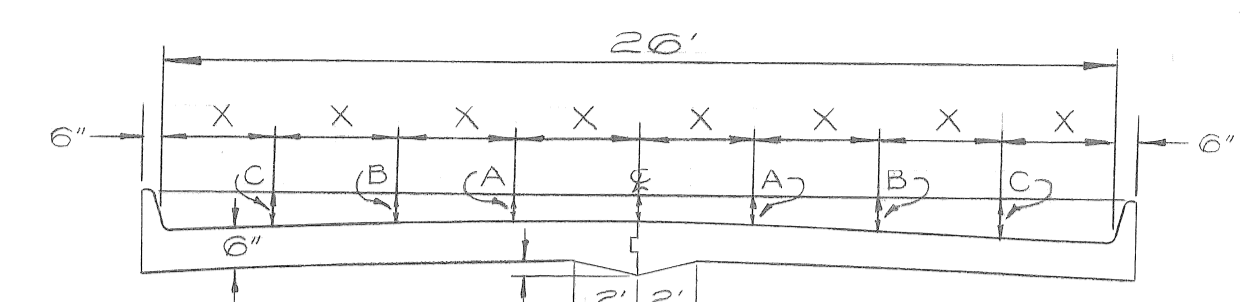
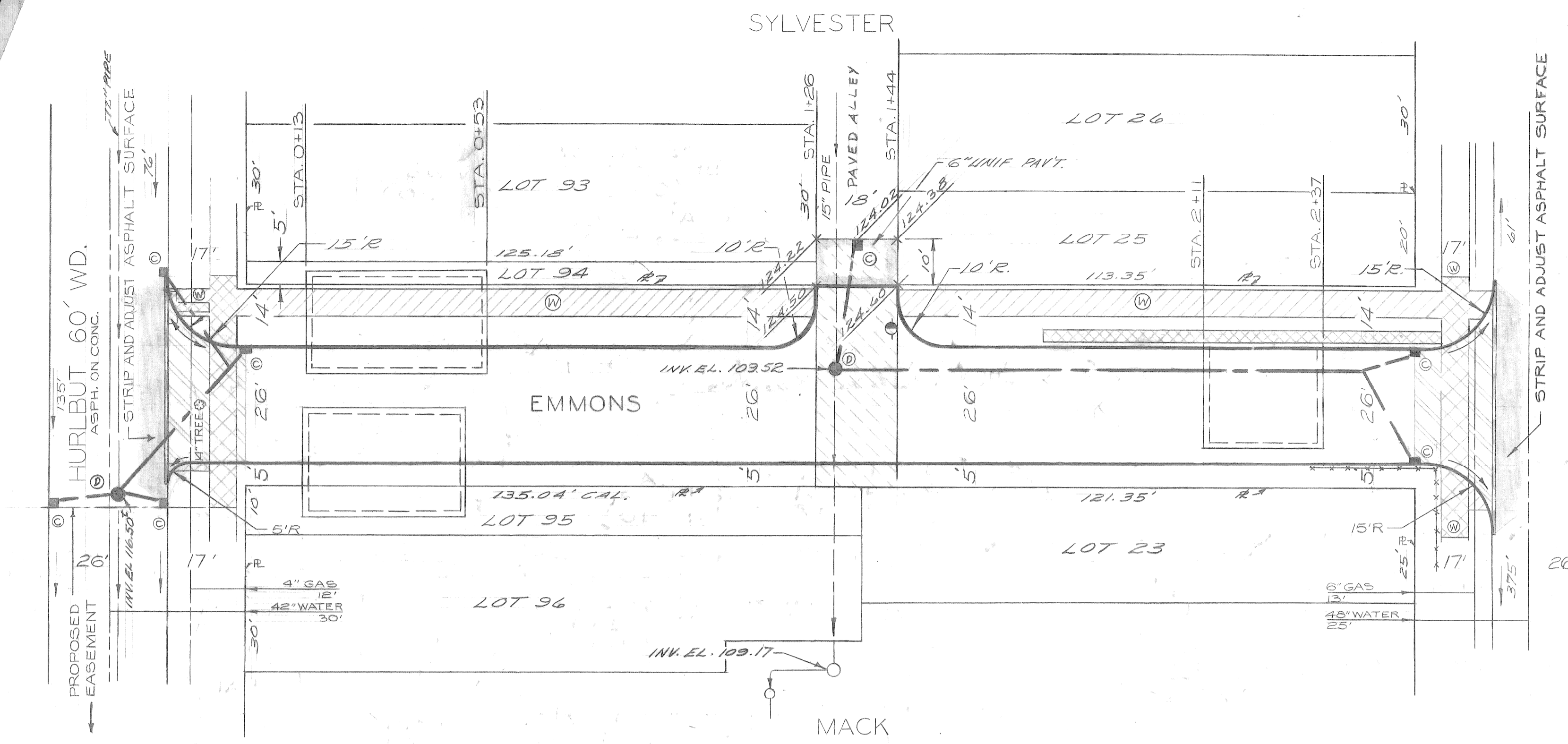


BENCH MARKS

BENCH MARKS	ELEV.
R.B.M. 55-256A N.E. COR. MACK & ST. CLAIR	120.358
R.B.M. 55-256 N.E. COR. MACK & BEWICK	121.093
C.B.M. HYD. E.S. BEWICK OPP. HO. NO. 3786	125.16
C.B.M. SPK. IN D.E. GUY POLE W/5 HURLBUT 35' S. OF S.P.L. EMMONS	123.42

HORIZONTAL CONTROL

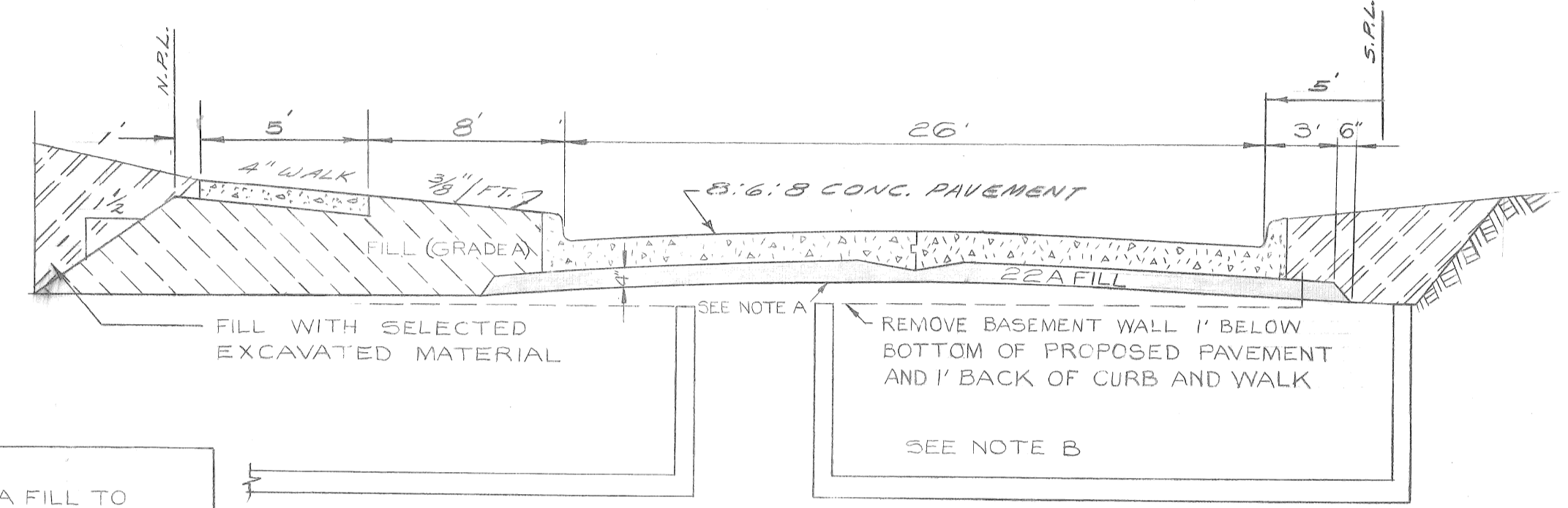
WEST END: + ON WALK 5' N. N.P.L. LOT 24 EXTENDED
 EAST END: + ON WALK 5' N. N.P.L. LOT 24



ELEMENTS OF 26' PAVEMENT

X	Y	Z	A	B	C	D	E	F
3'-3"	7"	5'-8"	4'-1/2"	4"	3'-3/4"			

- LEGEND**
- BUILDINGS WITH BASEMENTS
 - ALLEY PAVEMENT REMOVAL
 - SIDEWALK REMOVAL
 - SIDEWALK CONSTRUCTION
 - 8" UNIFORM PAVEMENT
 - CONSTRUCT STD. CATCH BASIN
 - CONSTRUCT STD. MANHOLE
 - CONSTRUCT STD. 4" CONC. WALK
 - EDISON POLE
 - PROPOSED CATCH BASIN & LINE
 - PROPOSED SEWER MANHOLE
 - TREE REMOVAL
 - FENCE REMOVAL
 - SEPARATE TYPE CURB REMOVAL
 - PROPOSED ELEVATIONS ALLEY PAVEMENT



TYPICAL SECTION
NO SCALE

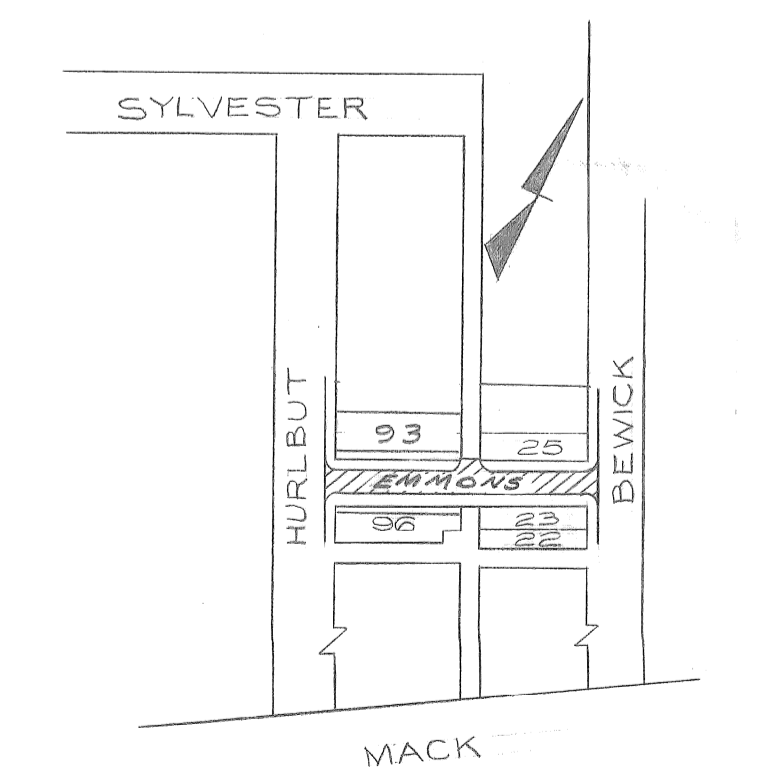
NOTE
USE TYPE 'B' THROTTLED CATCH BASIN COVERS AT STA. 2+56.6 - SEE STD. DET. DW'G. C-4393

NOTE A
USE 4" OF 22A FILL UNDER PAVEMENT OVER BASEMENTS ONLY STA. 0+3 TO STA. 0+53 & STA. 2+1 TO STA. 2+37

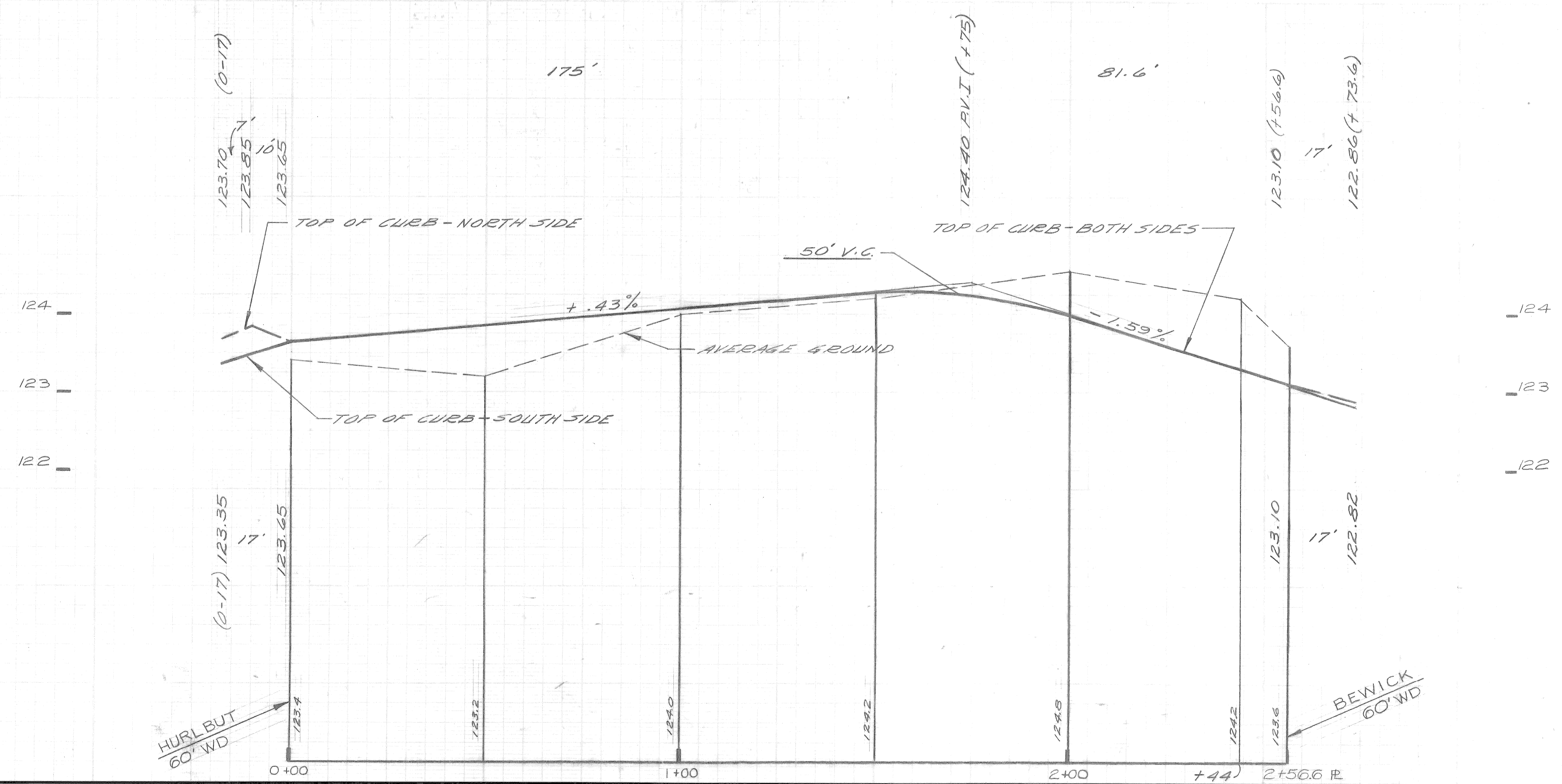
NOTE B:
BASEMENT AREAS PREVIOUSLY FILLED WITH GRADE A FILL TO THE APPROX. BOTTOM OF PROPOSED 22A FILL - EXCAVATE AS NECESSARY TO OBTAIN GRADE.

QUANTITIES

NO.	DESCRIPTION OF ITEM	UNIT	QUANTITY
1	EXCAVATION	CYDS	365
2	BERM GRADING	SYDS	327
3	ALLEY PAVEMENT REMOVAL	SYDS	110
4	FOUNDATION REMOVAL	CYDS	5
5	SIDEWALK REMOVAL	SFT	849
6	FILL - (22A)	CYDS	22
7	TREE REMOVAL 13" DIA.	EA.	1
8	SEPARATE TYPE CURB REMOVAL	LFT.	102
9	FENCE REMOVAL	LFT.	43
10	MANHOLE - STANDARD, NEW	EA.	2
11	CATCH BASIN - NEW	EA.	7
12	SEWER - 12" PIPE	LFT.	250
13	SEWERS UNDER PAVT - 12" PIPE	LFT.	50
14	PAVT - 8" 6:8 - TYPE IV INT. CURB	SYDS	795
15	PAVT - 8" UNIF - TYPE IV INT. CURB	SYDS	121
16	PAVT - 6" UNIF - NO CURB	SYDS	20
17	STRIP & ADJUST ASPHALT SURFACE	SYDS	75
18	LONG DL. DUMMY-GROVE CONTR. JT.	LFT.	10
19	TEST CORES	EA.	1
20	SIDEWALKS - 4" STANDARD	SFT.	1852



LOCATION PLAN
NO SCALE



Sewer Approved 7/28/69 [Signature]

NO.	DESCRIPTION	BY	CHECKED BY	DATE
1	PLAN	D.E.U.		
2	GRADE	TALLEY		
3	ESTIMATE	TALLEY	D.E.U.	
4	FINAL	TALLEY	TALLEY	

CITY OF DETROIT
 DEPARTMENT OF PUBLIC WORKS
 CITY ENGINEERS OFFICE
 FOR

APPROVED: *John Erickson*
 ENGINEER OF STREETS

R. R. Hicks
 ASSISTANT CITY ENGINEER

Alfred Buzzaducci
 CITY ENGINEER

PAVING OF EMMONS
 FROM HURLBUT TO BEWICK

INDEX NO. 28	SHEET 1 OF 1 SHEETS
CONTRACT NO. 55	CONTRACT NO. PRIVATE PAVING
ASSIGNMENT NO. MO 13E (174)	ASSIGNMENT NO. MO 13E (174)
DATE 7-28-69	DATE 7-28-69