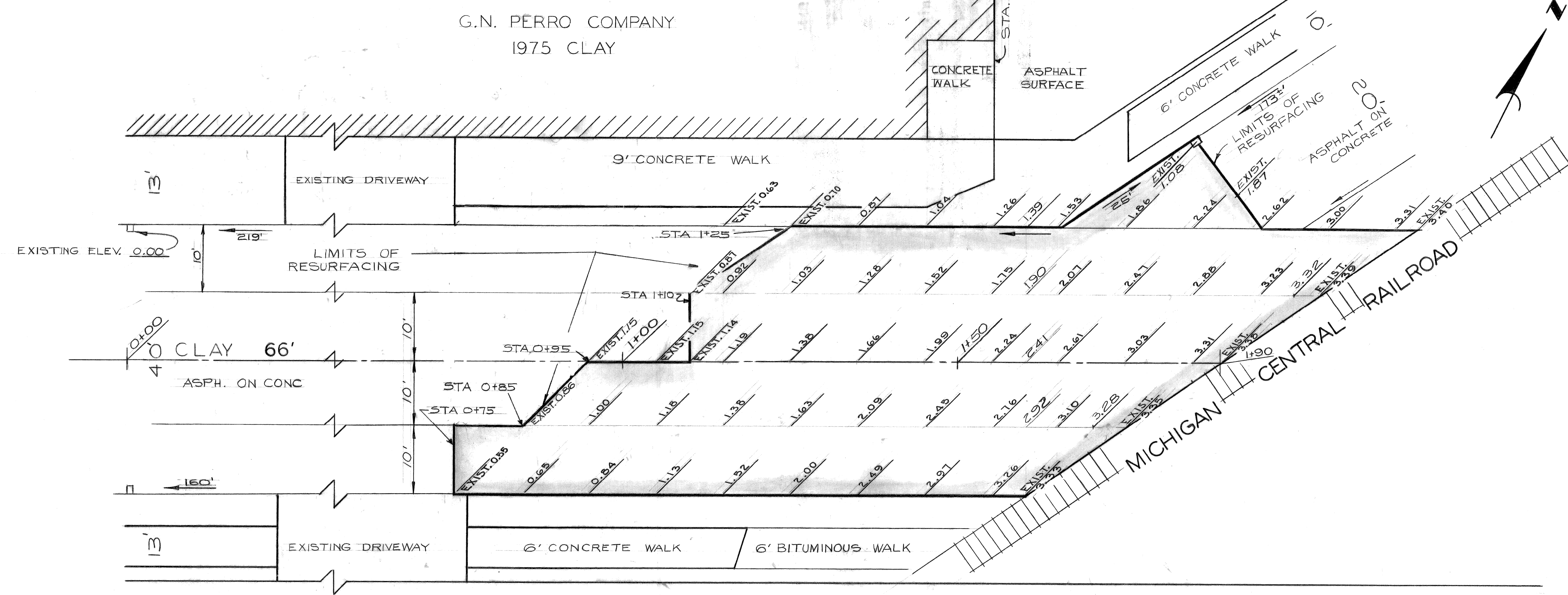
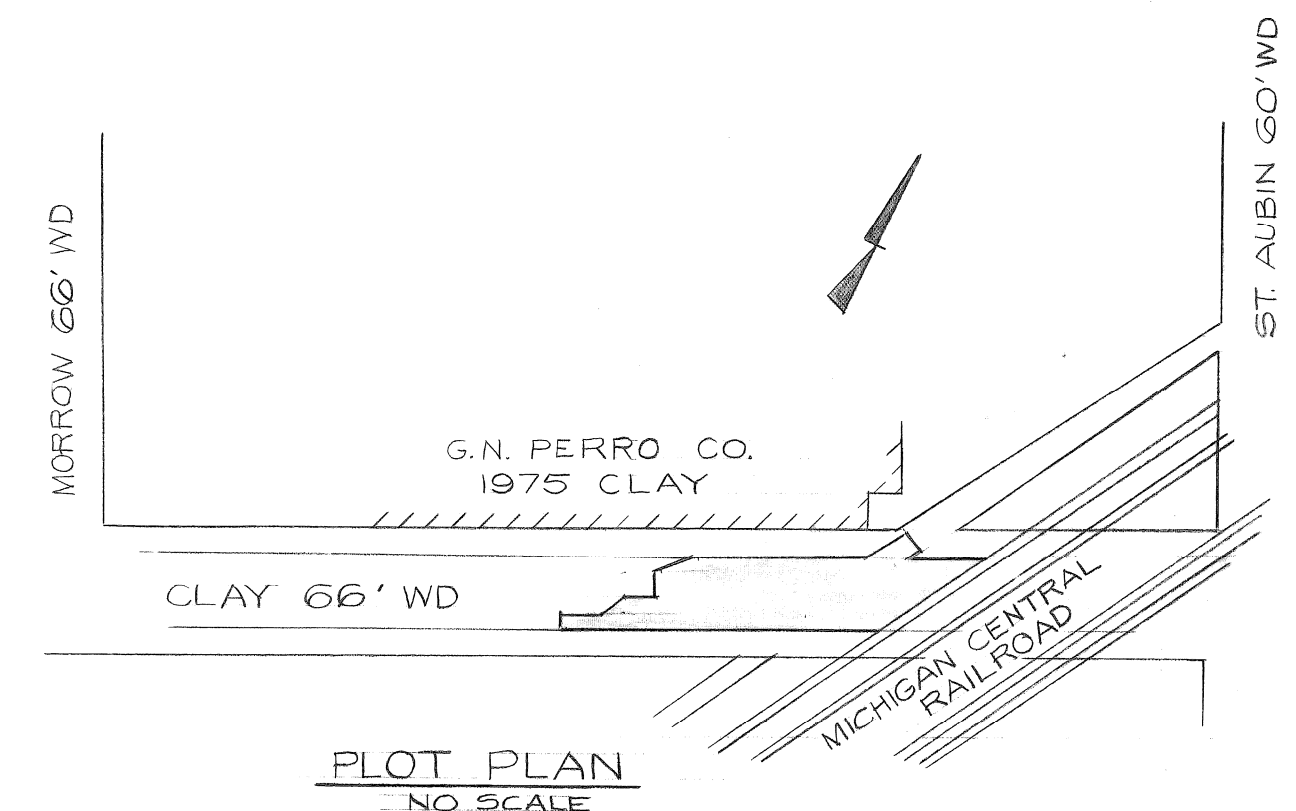


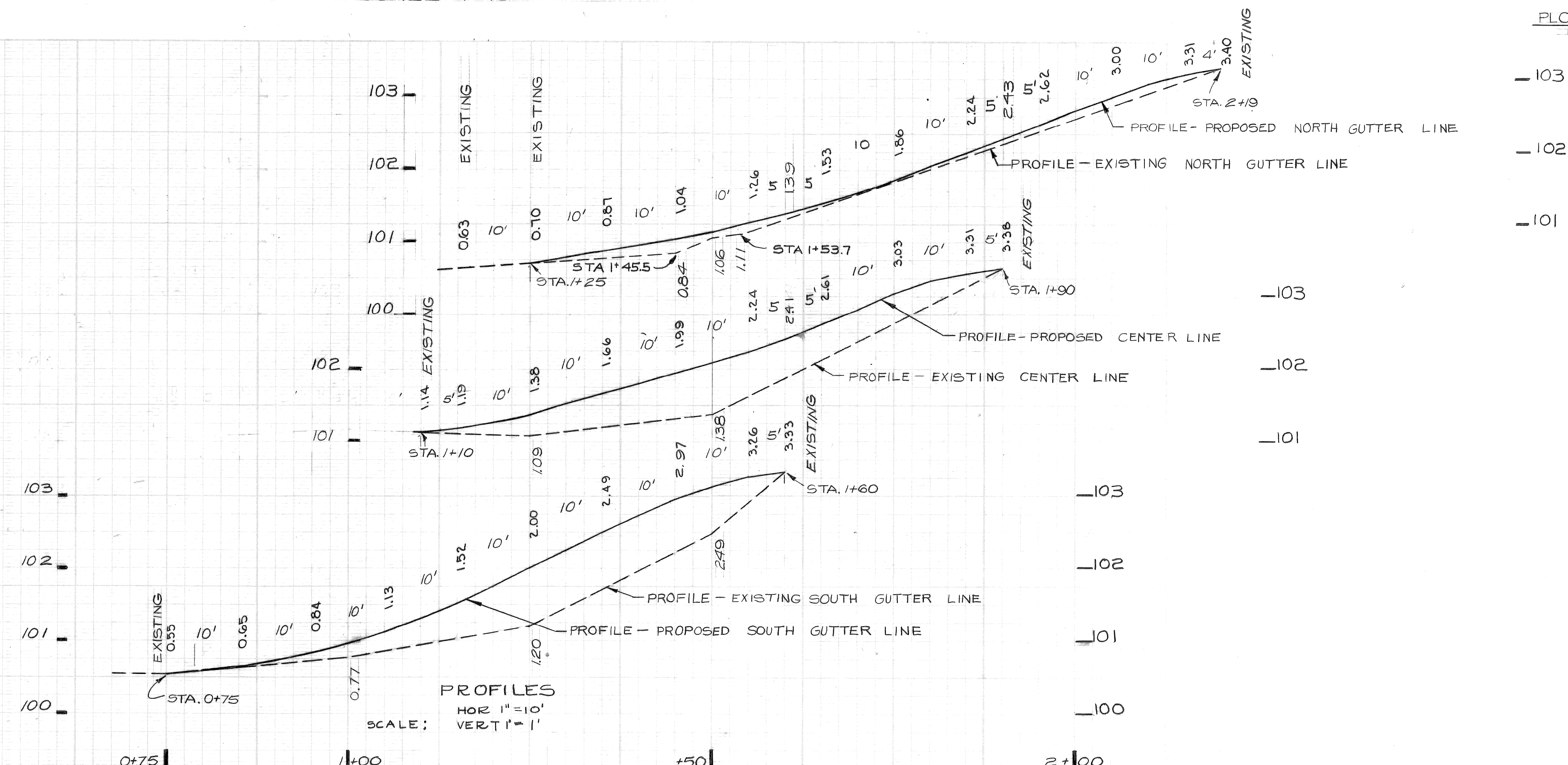
NOTE - FOR SYMBOLS @ ETC. SEE STANDARD DETAIL DRAWING NO. C-4378
 REQUESTED BY STREET MAINTENANCE
 BENCH MARKS ELEV.
 THE EXISTING CATCH BASIN ON THE NORTH GUTTER LINE OF CLAY AT STATION 0+00 IS ASSUMED ELEVATION 0.00 (SEE PLAN)



LEGEND
 □ EXISTING CATCH BASIN



SCALE 1"=10'



PLAN	BY: [Signature]	CHECKED BY: [Signature]	APPROVED: [Signature]
GRADE	[Signature]	[Signature]	ENGINEER OF STREETS
ESTIMATE	[Signature]	[Signature]	ENGINEER OF EXPRESSWAY
REVISIONS	DR N	CK'D	AP'VD
FINAL	CHECK	REVIEW	N.J.K.

CITY OF DETROIT
 DEPARTMENT OF PUBLIC WORKS
 CITY ENGINEERS OFFICE
 FOR
 STREET MAINTENANCE AND CONSTRUCTION

C LAY
 FROM 190' WEST OF MICHIGAN CENTRAL RAILROAD
 TO MICHIGAN CENTRAL RAILROAD
 PROPOSED RESURFACING GRADES

INDEX NO.	14	SHEET 1 OF 1 SHEETS
CONTRACT NO.		
ASSIGNMENT NO.	MO 13 E	
DATE	12-20-71	