

# CITY OF DETROIT CITY ENGINEERING DIVISION - E.P.M.D.

IN CO-OPERATION WITH

MICHIGAN DEPARTMENT OF STATE HIGHWAYS AND TRANSPORTATION

AND

FEDERAL HIGHWAY ADMINISTRATION

PLAN AND PROFILE OF PROPOSED

## FEDERAL AID URBAN PROJECT NO. MICHIGAN M 2000 (113)

B.P.R. DIV. NO.	STATE	PROJECT NO.	FISCAL YEAR	SHEET NO.	TOTAL SHEETS
4	MICH.				
STREET	CITY	COUNTY	TWP.	SHEET NO.	TOTAL SHEETS
	DETROIT	WAYNE		1	

THE IMPROVEMENTS COVERED BY THESE PLANS SHALL BE IN ACCORDANCE WITH THE MICHIGAN DEPARTMENT OF STATE HIGHWAYS CURRENT STANDARD SPECIFICATIONS AND SUPPLEMENTAL SPECIFICATIONS.

*Printed 12-17-79*



ITEM NO. \_\_\_\_\_

CONTRACT FOR RIGHT OF WAY

LOCAL AUTHORITY APPROVAL  
CITY OF DETROIT  
CITY ENGINEERING DIVISION  
ENVIRONMENTAL PROTECTION & MAINTENANCE DEPARTMENT

APPROVED BY \_\_\_\_\_ DATE \_\_\_\_\_  
ASSISTANT CITY ENGINEER

APPROVED BY \_\_\_\_\_ DATE \_\_\_\_\_  
CITY ENGINEER

RECOMMENDED FOR APPROVAL

BY \_\_\_\_\_ DATE \_\_\_\_\_  
F.A.U. ENGINEER

PLANS CHECKED BY \_\_\_\_\_ DATE \_\_\_\_\_

DEPARTMENT OF STATE HIGHWAYS APPROVAL  
APPROVED FOR COMMISSION

BY \_\_\_\_\_ DATE \_\_\_\_\_  
DEPUTY DIRECTOR - HIGHWAYS

PREPARED UNDER SUPERVISION OF

\_\_\_\_\_  
REGISTERED PROFESSIONAL ENGINEER REGISTRATION NO. \_\_\_\_\_

CITY OF DETROIT  
ORGANIZATION

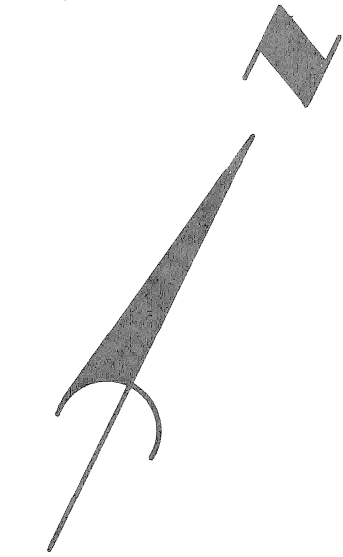
DETROIT MICHIGAN  
ADDRESS

( SEAL )

U. S. DEPARTMENT OF TRANSPORTATION  
FEDERAL HIGHWAY ADMINISTRATION

APPROVED \_\_\_\_\_ DATE \_\_\_\_\_  
DISTRICT ENGINEER

FILE NO. (USE NO. 350 STENCIL)	STATE PROJECT	FEDERAL PROJECT	SHEET NO.
			1



PLAN  
Scale: 1"=880'

DESIGNED BY	APPROVED:
DRAWN BY	ENGINEER OF STREETS
TRACED BY	HIGHWAY ENGINEER
CHECKED BY	

CITY OF DETROIT  
CITY ENGINEERING DIVISION - EPMD  
BUREAU OF STREETS AND HIGHWAYS

JEFFERSON AVE. - R.O.W.  
VICINITY PLAN

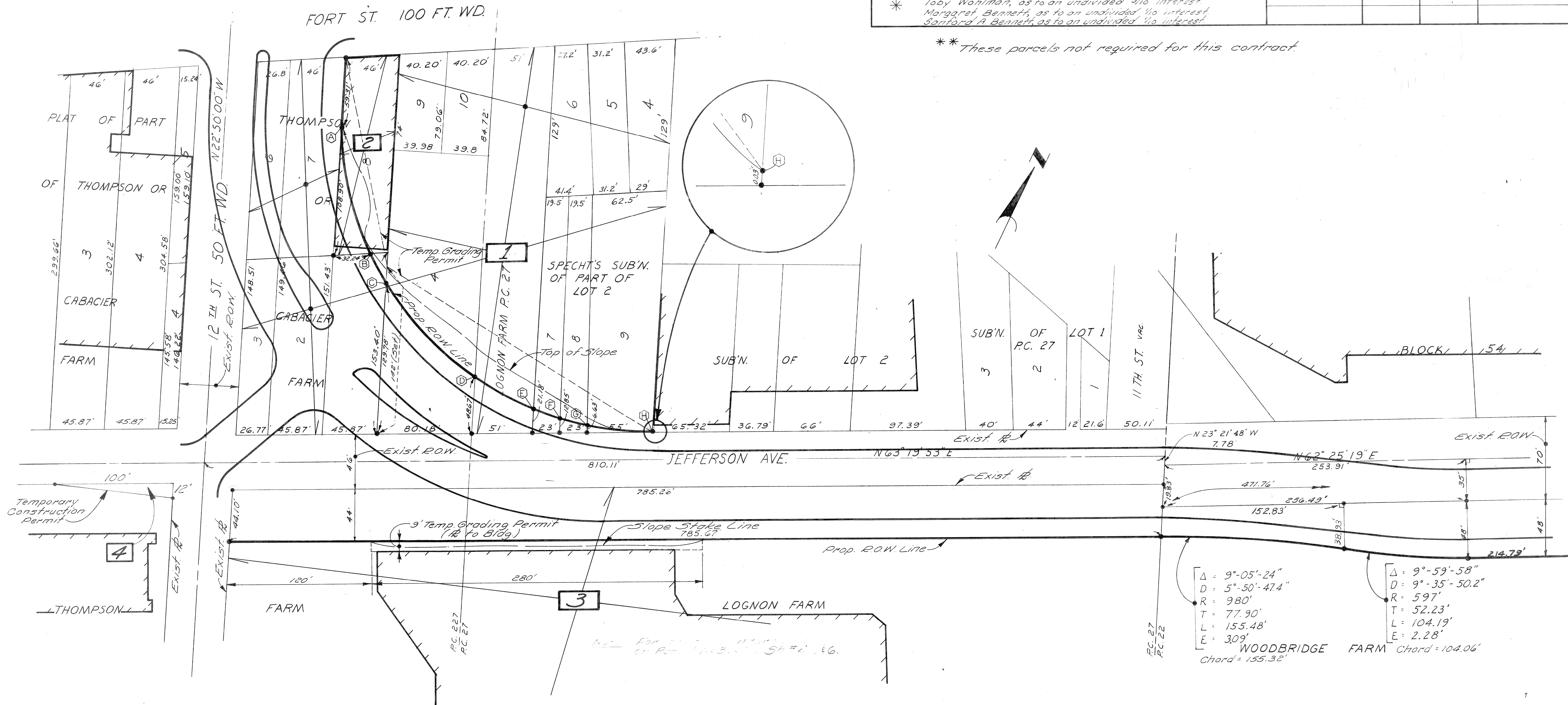
SHEET 2 OF 12 SHEETS
CONTRACT NO.
ASSIGNMENT NO.
DATE

CURVE DATA		
RADIUS = 265'		
LOCATION	ARC LENGTH	CHORD LENGTH
A - B	110.97'	110.16'
B - C	26.02'	26.01'
C - D	111.03'	110.22'
D - E	56.43'	56.33'
E - F	23.74'	23.73'
F - G	23.44'	23.43'
G - H	55.31'	55.21'

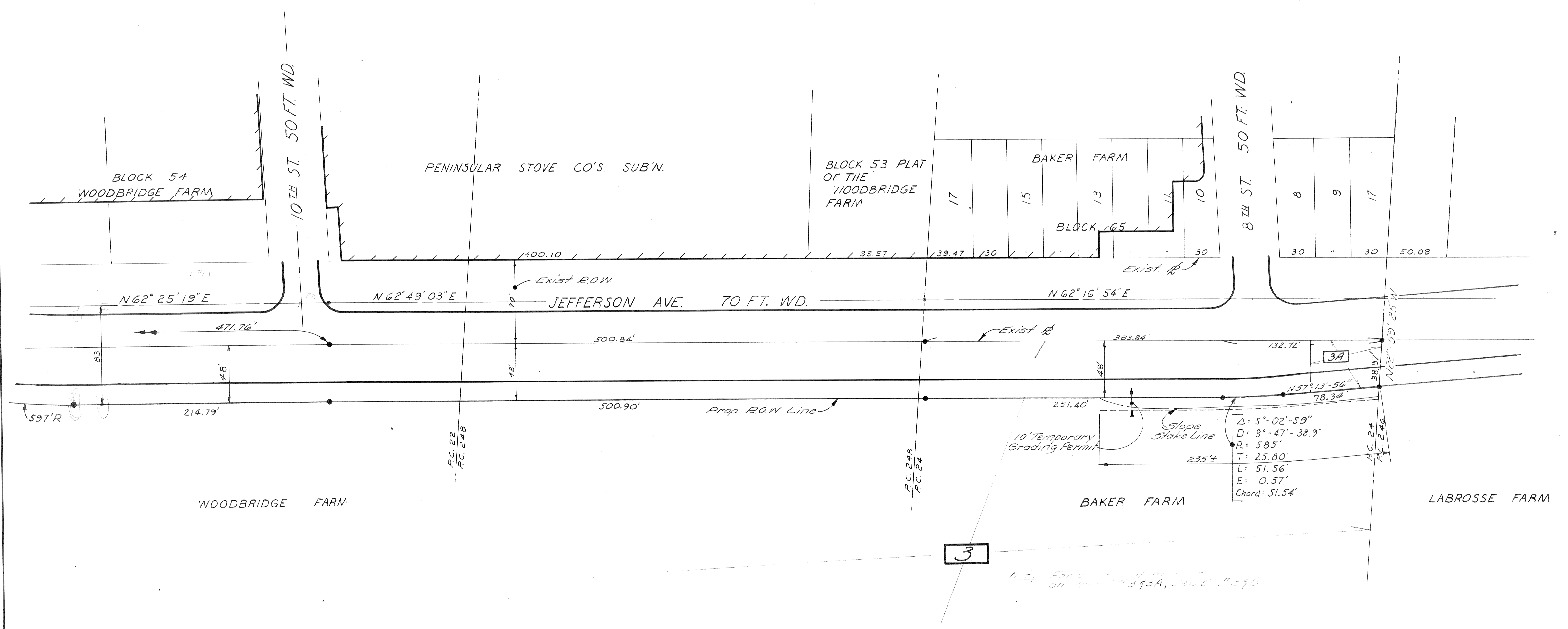
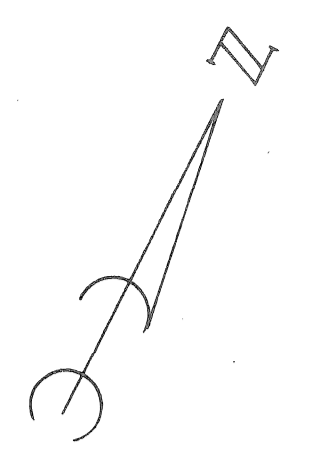
PARCEL	OWNER(S)	TOTAL OWNERSHIP	TO BE ACQUIRED		REMAINDER		REMARKS
			IN FEE INCL. EX. ESMT. (PORTION IN EX. ESMT.)	OTHER INCL. EX. ESMT. (PORTION IN EX. ESMT.)	LEFT	RIGHT	
1	See * Below	106,132 Sq. Ft.	38,952 Sq. Ft.			67,180 Sq. Ft.	7,439 Sq. Ft. - Temp. Grading Permit
2	Mel Company	7,699 Sq. Ft.	7,319 Sq. Ft.			380 Sq. Ft.	2,282 Sq. Ft. - Temp. Grading Permit
3	Detroit Free Press	1,248,012 Sq. Ft.	93,560 Sq. Ft.			1,154,452 Sq. Ft.	487 Sq. Ft. - Temp. Grading Permit
**3A	Detroit Free Press	1,248,012 Sq. Ft.	2,410 Sq. Ft.				
4	260 Railroad						600 Sq. Ft. - Temporary Construction Permit
**5	Wayne County Community College	462,624 Sq. Ft.	838 Sq. Ft.		468,786		

\* Minnie Convasser, as to an undivided 1/2 interest  
 Toby Wohlman, as to an undivided 3/10 interest  
 Margaret Bennett, as to an undivided 1/10 interest  
 Sanford A. Bennett, as to an undivided 1/10 interest

\*\* These parcels not required for this contract.

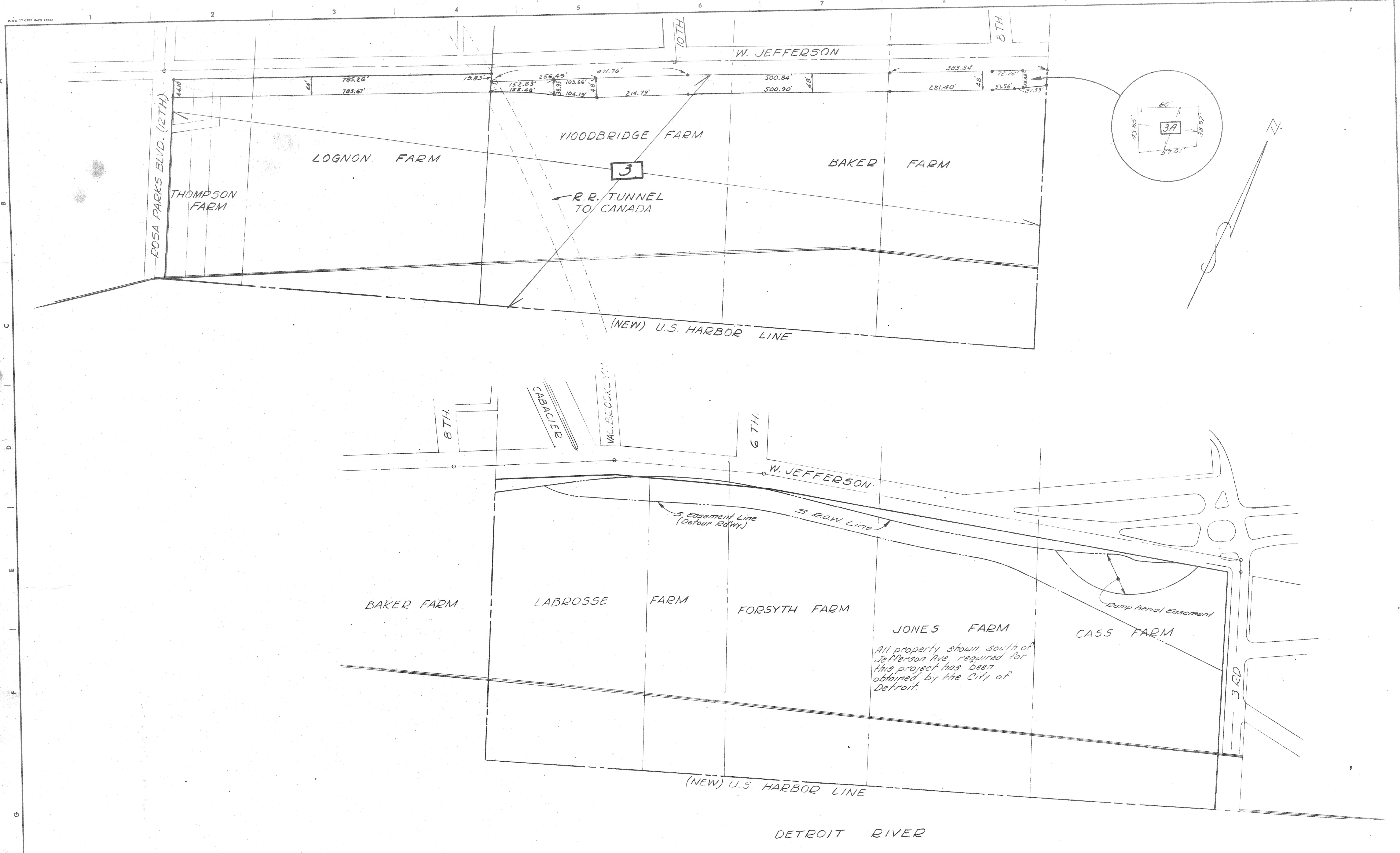


REFERENCE DRAWINGS				DESIGNED BY	APPROVED:				CITY OF DETROIT			JEFFERSON AVE. - R.O.W.			SHEET 3 OF 12 SHEETS	
DRAWN BY				TRACED BY				PLAN			CONTRACT No.		DRWG. No.			
CHECKED BY				DATE				NOV 9, 1953			DATE		NOV 9, 1953			



				CITY OF DETROIT				JEFFERSON AVE. - R.O.W.				SHEET 4 OF 12 SHEETS	
												CONTRACT No.	
												DRWG No.	
												DATE NOV. 9 1976	
								PLAN					

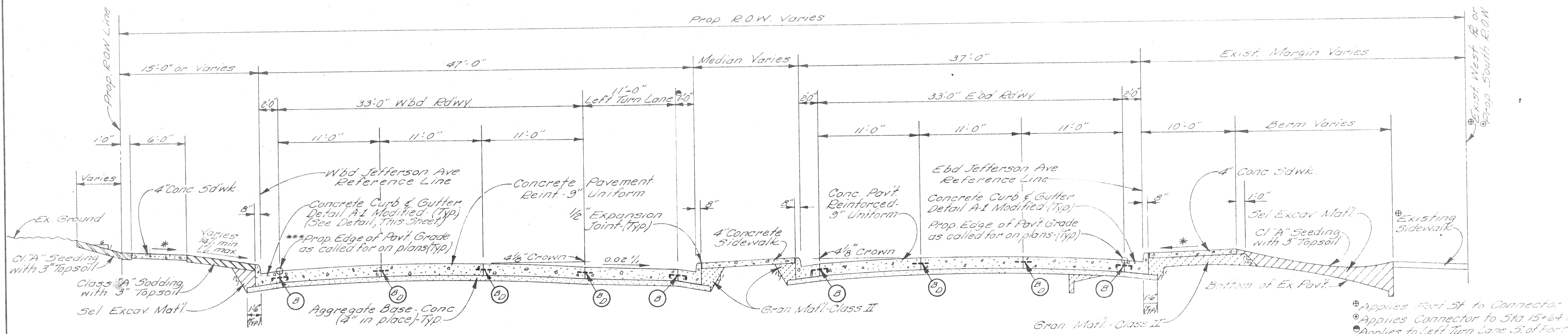




All property shown south of Jefferson Ave. required for this project has been obtained by the City of Detroit.

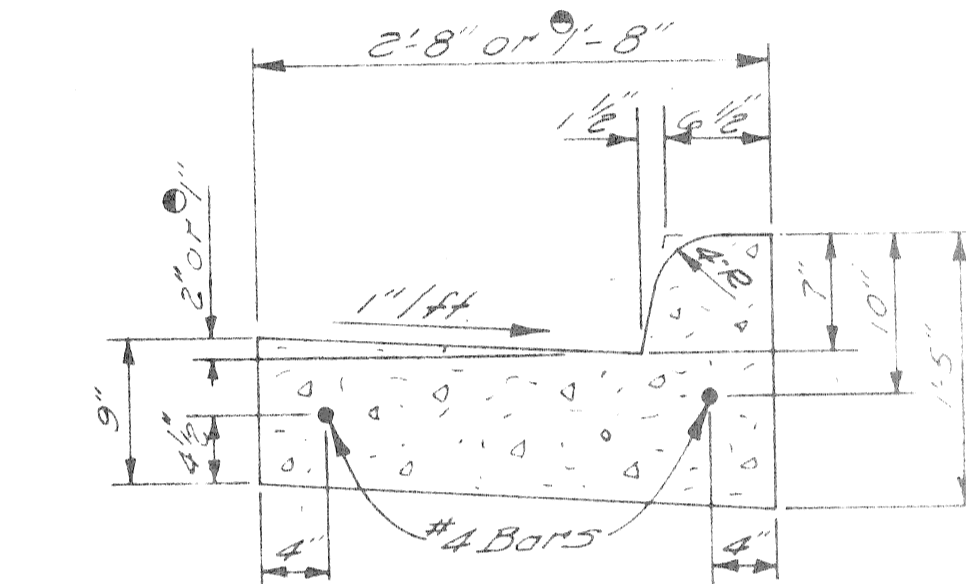
SCALE: 1" = 100'

CITY OF DETROIT CITY ENGINEERING DIVISION C. P. M. D.				JEFFERSON AVE. - R.O.W.				SHEET <u>6</u> OF <u>12</u> SHEETS	
DESIGNED BY J. KNOX				APPROVED:				CONTRACT No.	
DRAWN BY				TRACED BY				DRWG No.	
CHECKED BY				CITY ENGINEER				DATE NOV. 9, 1911	
REVISIONS LOCATED BY COORDINATES ON SHEET									



**TYPICAL CROSS-SECTION JEFFERSON AVE. RECONSTRUCTION**  
 FORT ST. TO STA. 15+64.17  
 NO SCALE

- ⊕ Applies Fort St to Connector
- ⊙ Applies Connector to Sta 15+64.17
- ⊙ Applies to Left Turn Lane 3' of Fort

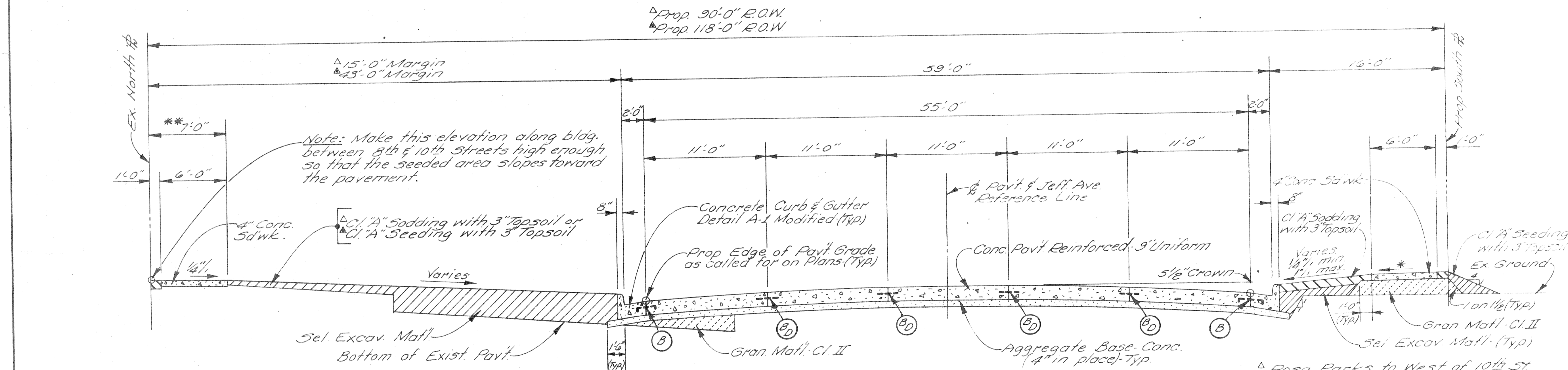


**CONCRETE CURB & GUTTER DETAIL A-1 MODIFIED**  
 NO SCALE

- JOINT LEGEND**
- ⊙ or ⊕ Longitudinal Pavt. Jt according to M.O.S.H. Std Dwg. II-41-3
  - ⊙ Optional, B or D

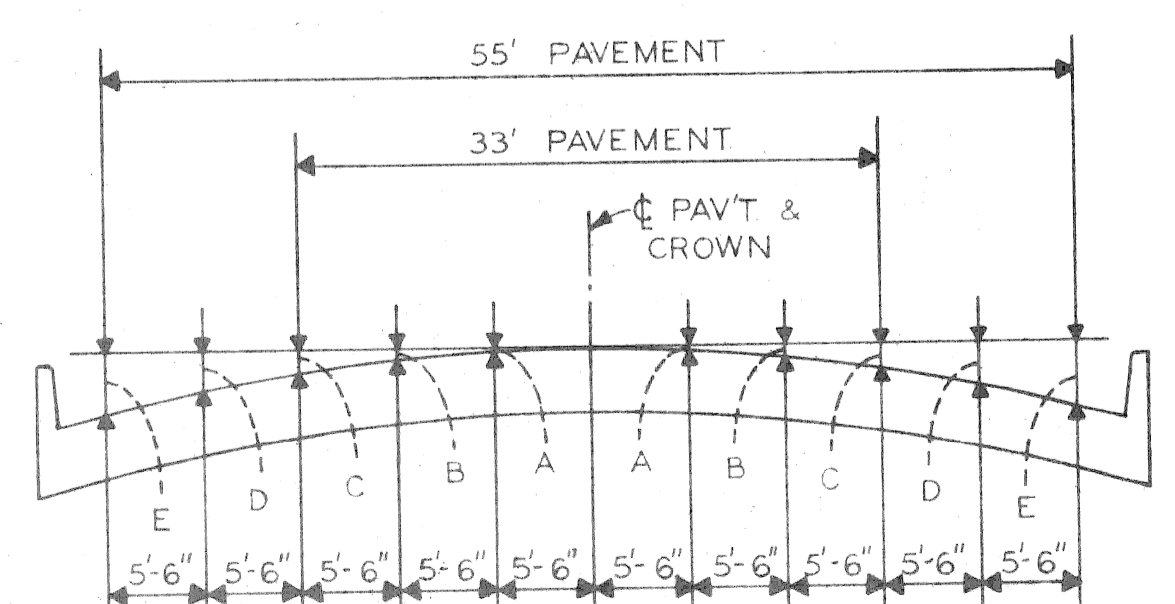
- EARTHWORK LEGEND**
- ▨ Granular Material - Class II
  - ▨ Selected Excavated Matl., See Note #2
  - ▨ Conc. Pavement or Conc. Sidewalk
  - ▨ Aggregate Base Concrete (4" in Place)
  - ▨ Class "A" Sodding with 3" Topsoil
  - ▨ Class "A" Seeding with 3" Topsoil

- GENERAL NOTES**
- 1 Backfill if req'd under prop. sd'wk and/or pavt. shall be Gran Matl. Class II
  - 2 Sel. Excav. Matl. is incidental to "Earth Excavation."
  - 3 see Sta. 15+64.17 for tables noting quantities which are to be billed for this sheet.



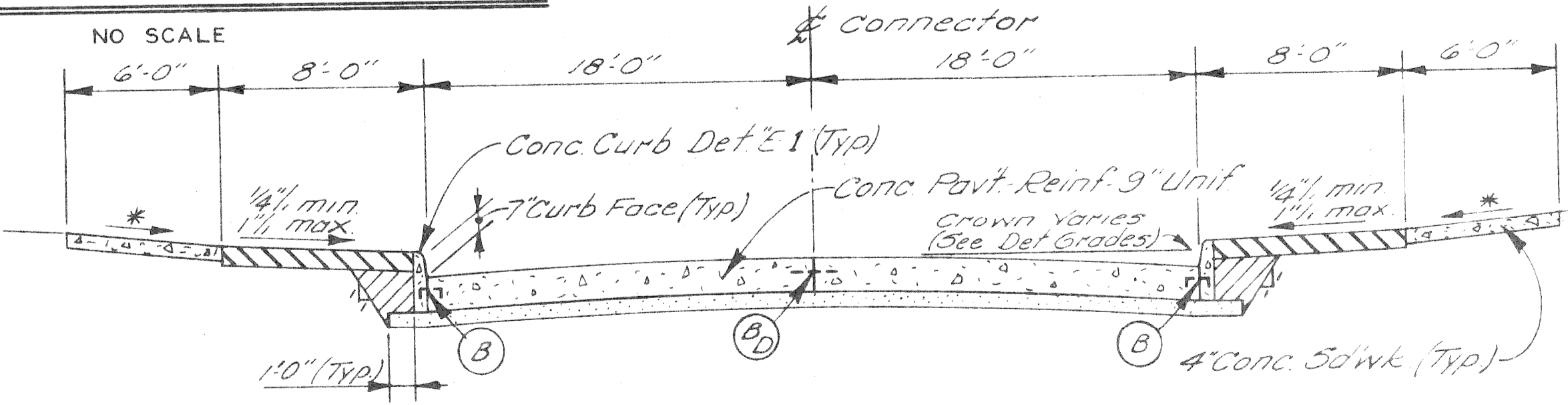
**TYPICAL CROSS-SECTION JEFFERSON AVE. RECONSTRUCTION**  
 BETWEEN ROSA PARKS BLVD. & 8TH ST.  
 NO SCALE

\*\* Place 4" Conc. Sidewalk to face of building where building fronts on property line.



**ELEMENTS OF 33' & 55' PAVEMENT**  
 NO SCALE

PAVEMENT WIDTH	A	B	C	D	E
33'	1 1/2"	1 7/8"	4 1/8"	-	-
55'	1/4"	7/8"	2"	3 1/2"	5 1/2"



**TYPICAL CROSS-SECTION CONNECTOR**  
 NO SCALE

CITY OF DETROIT CITY ENGINEERING DIVISION - EPMD BUREAUS OF STREETS AND HIGHWAYS		JEFFERSON AVENUE RECONSTRUCTION ROSA PARKS BLVD. TO EIGHTH ST.		SHEET 7 OF 12 SHEETS
DESIGNED BY: [Signature] DRAWN BY: [Signature] TRACED BY: [Signature] CHECKED BY: [Signature]		APPROVED: [Signature] ENGINEER OF STREETS HIGHWAY ENGINEER		CONTRACT NO. ASSIGNMENT NO. DATE
REVISIONS LOCATED BY COORDINATES ON SHEET		TYPICAL CROSS-SECTIONS		3 4 5 6 7 8 9 10 11

C.B.M Arrow on Hydrant E. of 12th - N. Side Jefferson Elev 106.41  
 C.B.M Arrow on Hydrant N. Side Fort - 50'± E. of 12th Elev 117.43

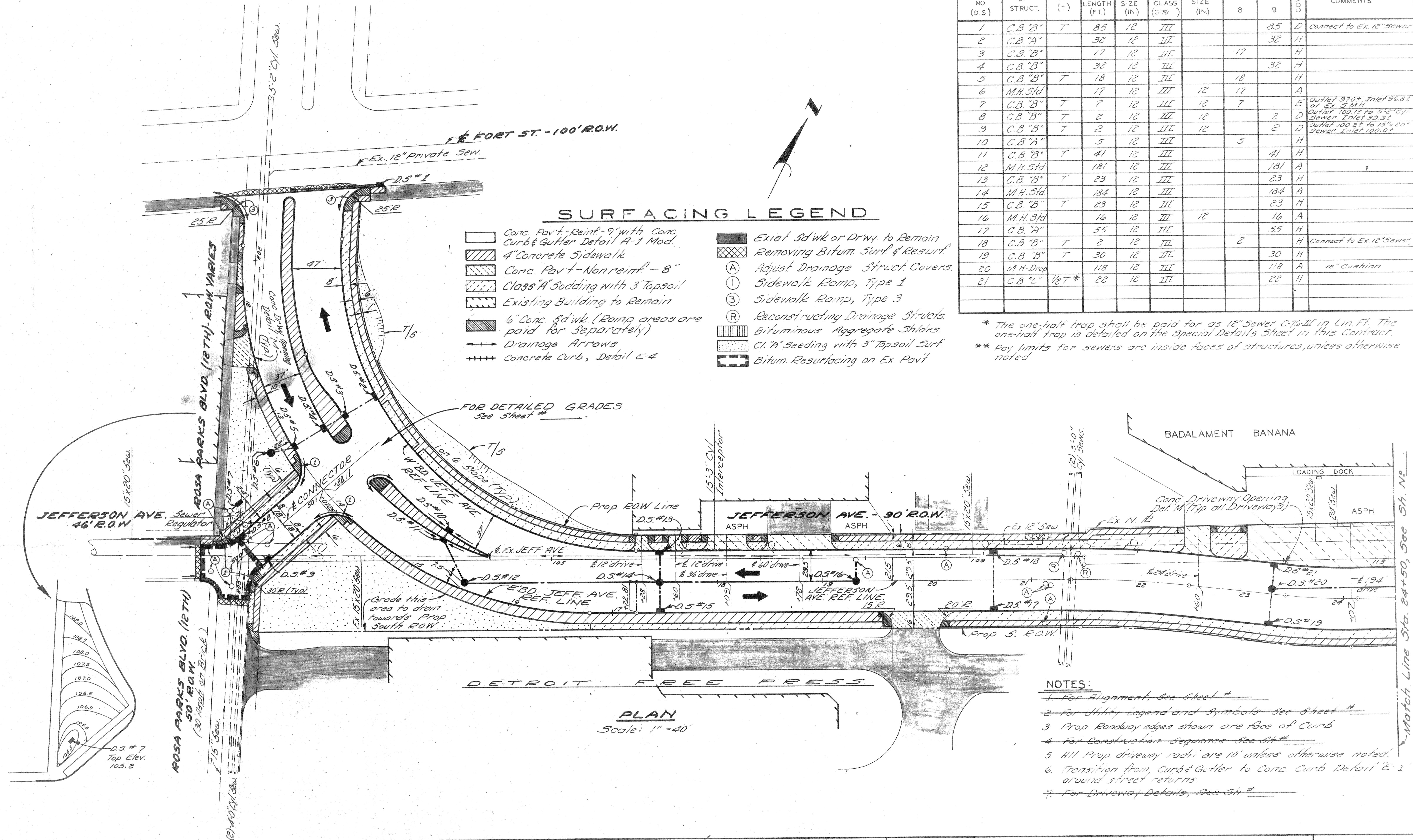
DRAINAGE STRUCTURE TABLE

DRAINAGE STRUCTURE NO (D.S.)	TYPE OF STRUCT.	WITH TRAP (T)	**SEWER LENGTH & TYPE LEAVING (D.S.)			SEWER TAP SIZE (IN)	TRENCH DETAIL (L.F.)		COVER	COMMENTS
			LENGTH (FT.)	SIZE (IN)	CLASS (C-76)		8	9		
1	C.B."B"	T	85	12	III		85	D	Connect to Ex. 12" Sewer	
2	C.B."A"		32	12	III		32	H		
3	C.B."B"		17	12	III		17	H		
4	C.B."B"		32	12	III		32	H		
5	C.B."B"	T	18	12	III		18	H		
6	M.H. Std		17	12	III	12	17	A		
7	C.B."B"	T	7	12	III	12	7	E	Outlet 370± Inlet 368± of Ex. 5" M.H.	
8	C.B."B"	T	2	12	III	12	2	D	Outlet 100± to 5" Cyl. Sewer. Inlet 99.9±	
9	C.B."B"	T	2	12	III	12	2	D	Outlet 100± to 15" 20" Sewer. Inlet 100.0±	
10	C.B."A"		5	12	III		5	H		
11	C.B."B"	T	41	12	III		41	H		
12	M.H. Std		181	12	III		181	A		
13	C.B."B"	T	23	12	III		23	H		
14	M.H. Std		184	12	III		184	A		
15	C.B."B"	T	23	12	III		23	H		
16	M.H. Std		16	12	III	12	16	A		
17	C.B."A"		55	12	III		55	H		
18	C.B."B"	T	2	12	III		2	H	Connect to Ex 12" Sewer	
19	C.B."B"	T	30	12	III		30	H		
20	M.H. Drop		118	12	III		118	A	12" Cushion	
21	C.B."L"	1/2 T*	22	12	III		22	H		

\* The one-half trap shall be paid for as 12" Sewer C-76-III in Lin. Ft. The one-half trap is detailed on the Special Details Sheet in this Contract.  
 \*\* Pay limits for sewers are inside faces of structures, unless otherwise noted.

SURFACING LEGEND

- Conc. Pav't - Reinf. - 9" with Conc. Curb & Gutter Detail A-1 Mod.
- 4" Concrete Sidewalk
- Conc. Pav't - Non reinf. - 8"
- Class "A" Sodding with 3" Topsoil
- Existing Building to Remain
- 6" Conc. Sidewalk (Ramp areas are paid for separately)
- Drainage Arrows
- Concrete Curb, Detail E-4
- Exist. Sidewalk or Drwy. to Remain
- Removing Bitum. Surf. & Resurf.
- Adjust Drainage Struct. Covers
- Sidewalk Ramp, Type 1
- Sidewalk Ramp, Type 3
- Reconstructing Drainage Structs.
- Bituminous Aggregate Shldrs.
- Cl. "A" Seeding with 3" Topsoil Surf.
- Bitum. Resurfacing on Ex. Pav't.



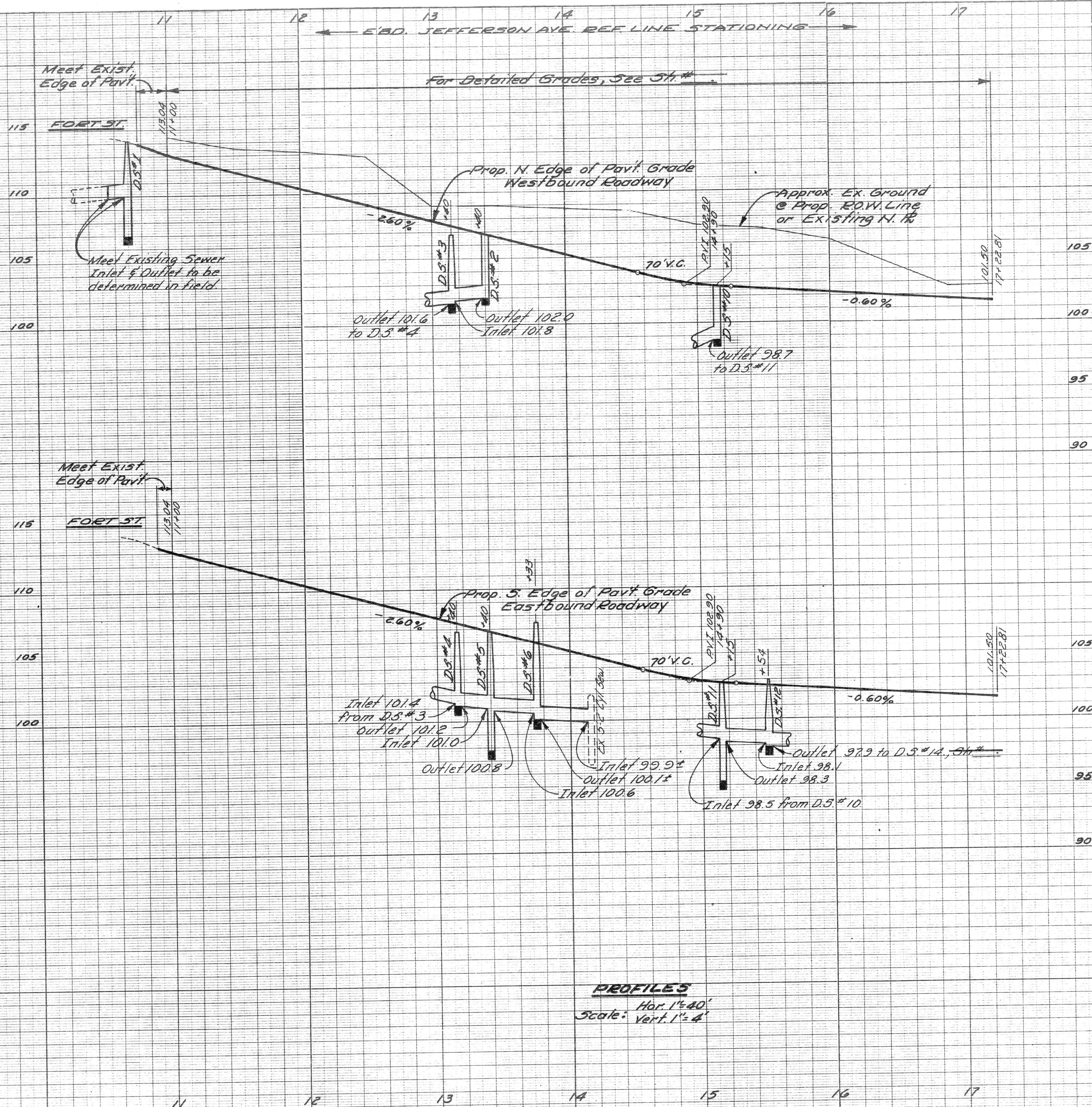
- NOTES:
- 1 For Alignment, See Sheet #
  - 2 For Utility Legend and Symbols See Sheet #
  - 3 Prop Roadway edges shown are face of Curb
  - 4 For Construction Sequence See Sh. #
  - 5 All Prop driveway radii are 10' unless otherwise noted.
  - 6 Transition from Curb & Gutter to Conc. Curb Detail 'E-1' around street returns.
  - 7 For Driveway Details, See Sh. #

CITY OF DETROIT CITY ENGINEERING DIVISION - EPMD BUREAUS OF STREETS AND HIGHWAYS		JEFFERSON AVENUE RECONSTRUCTION ROSA PARKS BLVD. TO EIGHTH ST.		SHEET 8 OF 12 SHEETS
DESIGNED BY DRAWN BY <i>Sucech</i> TRACED BY CHECKED BY		APPROVED: ENGINEER OF STREETS HIGHWAY ENGINEER		CONTRACT NO. ASSIGNMENT NO. DATE
COORD. DESCRIPTION REVISIONS LOCATED BY COORDINATES ON SHEET		PLAN, JEFFERSON AVE. FORT ST. TO STA. 24+50		





FINAL R.O.W.



**PROFILES**  
 Hor. 1"=40'  
 Scale: Vert. 1"=4'

APPROVED BY

DWN BY *[Signature]*

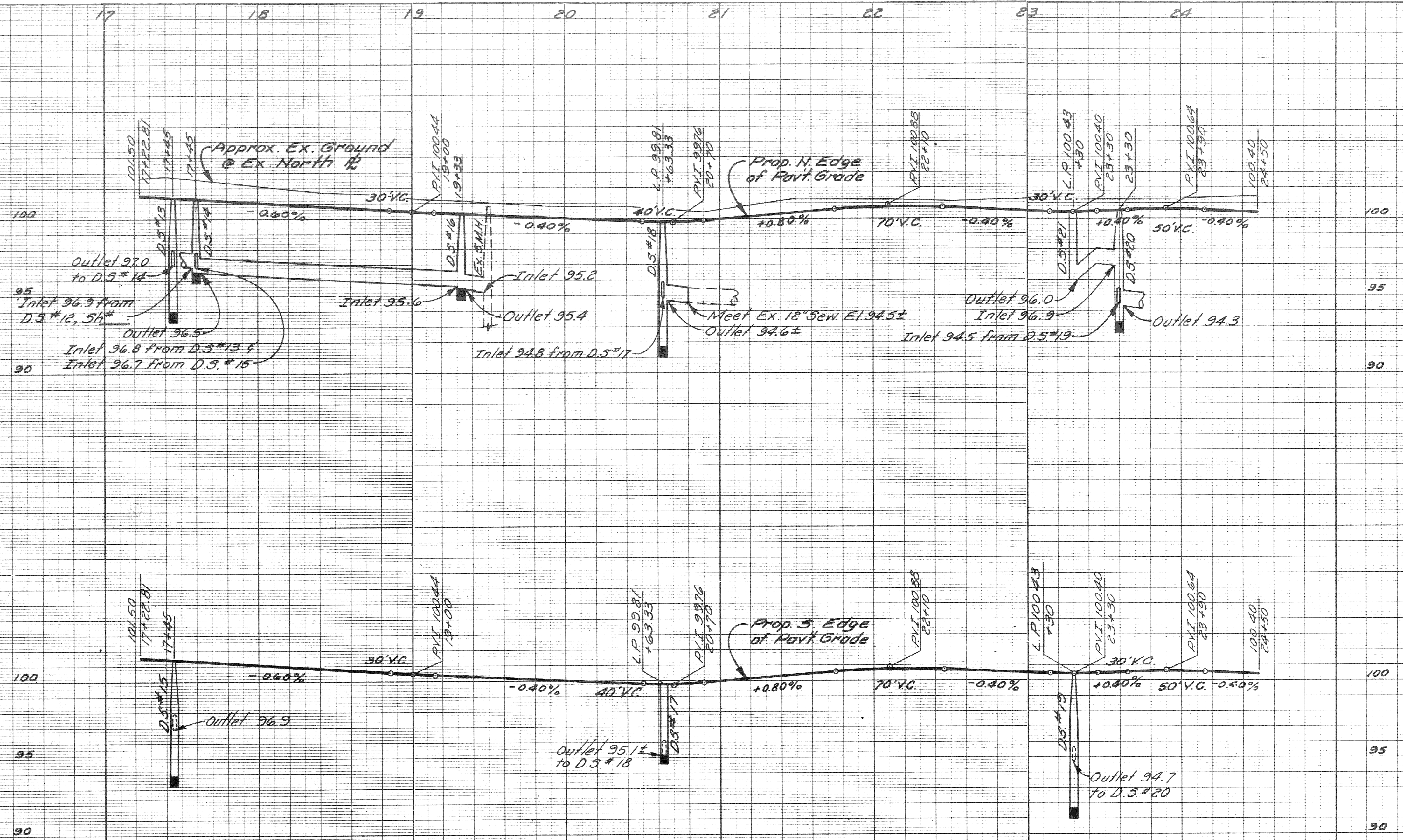
CKD BY

CITY OF DETROIT  
 CITY ENGINEERING DEPARTMENT  
 BUREAUS OF STREETS AND HIGHWAYS

JEFFERSON AVE. RECONSTRUCTION  
 ROSA PARKS BLVD. TO EIGHTH ST.  
 JEFFERSON AVE. PROFILES  
 FORT ST. TO STA. 17+22.81

SHEET 9 OF 12 SHEETS  
 CONTRACT NO.  
 DATE

FINAL R.O.W.



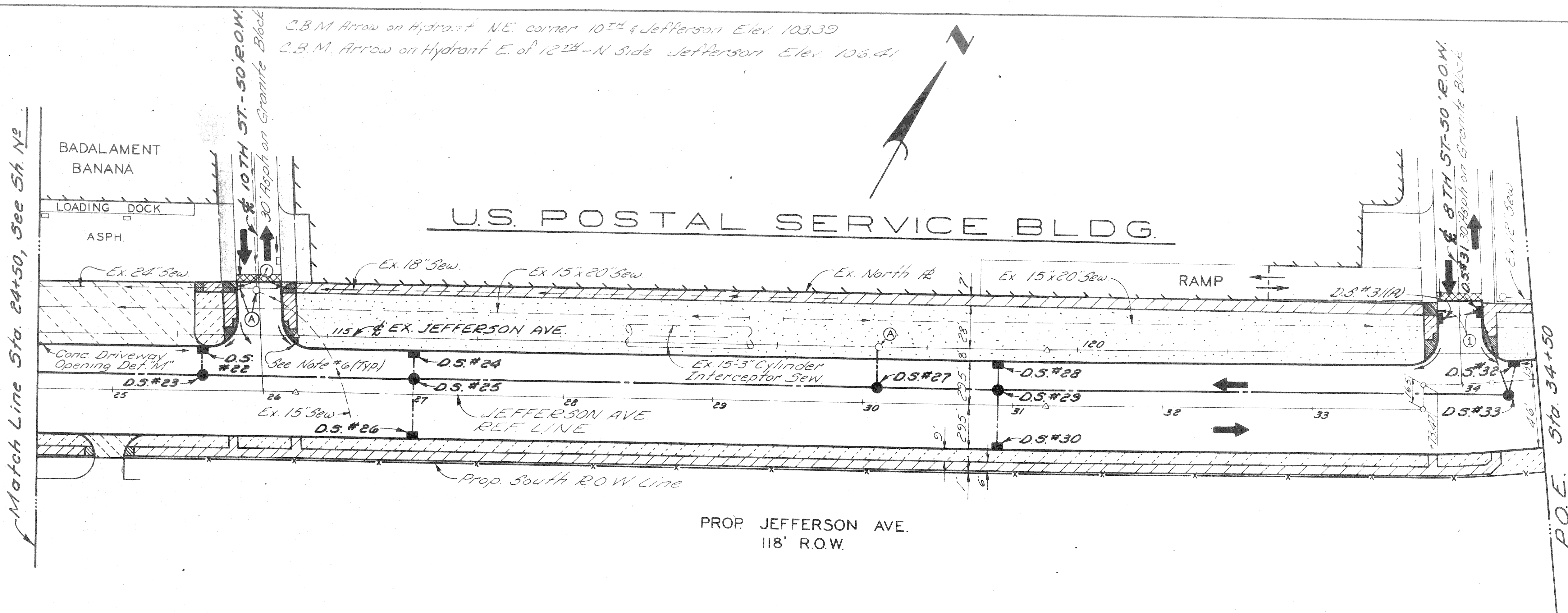
**PROFILES**  
 Hor. 1"=40'  
 Vert. 1"=4'

DWN BY: *WHP*  
 CKD BY:  
 APPROVED BY:

CITY OF DETROIT  
 CITY ENGINEERING DEPARTMENT  
 BUREAUS OF STREETS AND HIGHWAYS

JEFFERSON AVE. RECONSTRUCTION  
 ROSA PARKS BLVD TO EIGHTH ST.  
 JEFFERSON AVE. PROFILES  
 STA. 17+22.81 TO STA. 24+50

SHEET 10 OF 12 SHEETS  
 CONTRACT NO.  
 DATE



**PLAN**  
Scale: 1" = 40'

The following information is provided only as an aid to the Contractor.

Drainage Structure Cover Type	Contract Total
Type A	10 Each
Type D	5 Each
Type E	1 Each
Type H	18 Each

**SURFACING LEGEND**

- Conc. Pav't Reinf. - 9" with Conc. Curb & Gutter Detail A-1 Mod.
- 4" Conc. Sidewalk (Ramp areas are paid for separately)
- Conc. Pav't Nonreinf. - 8"
- Class "A" Sodding with 3" Topsoil
- Exist. Building to Remain
- 6" Conc. Sidewalk (Ramp areas are paid for separately)
- Drainage Arrows
- Existing Sidewalk or Driveway to Remain
- Removing Bitum Surf. & Resurface
- Class "A" Seeding with 3" Topsoil Surface
- (A) Adjust Drainage Structure Covers
- (I) Sidewalk Ramp, Type 1
- (R) Reconstructing Drainage Structure

**Miscellaneous Quantities for Jefferson Ave. Reconstruction Rosa Parks Blvd. to Eighth St**

Mobilization.....1 Lump Sum  
On the Job Training.....2 Each

**The following are estimated quantities for the job which may be used at the discretion of the Engineer.**

Subgrade Undercutting, Type II.....	500 Cu Yds.
4" Concrete Sidewalk.....	180 Sq. Ft.
Removing Sidewalk.....	20 Sq. Yds.
Cleaning Existing Storm Drainage Structures.....	7 Each
Class "A" Sodding.....	40 Sq. Yds.
Class "A" Seeding.....	1 Lb.
Topsoil Surface - 3".....	80 Sq. Yds.
Water.....	1 Unit
Excelsior Mulch Blankets.....	40 Sq. Yds.
Chemical Fertilizer Nutrient.....	2 Lbs.
Basement Cleanout.....	50 Cu. Yds.
Sewer Cleanout.....	100 Lin. Ft.
Cement.....	13 Tons

The quantities listed herein are billed to the Typ. X-Sections 5th.

DRAINAGE STRUCTURE NO (D.S.)	TYPE OF STRUCT	WITH TRAP (T)	** SEWER LENGTH & TYPE LEAVING (D.S.)			SEWER TAP SIZE (IN)	TRENCH DETAIL (L.F.)		COVER	COMMENTS
			LENGTH (FT)	SIZE (IN)	CLASS C-76"		8	9		
22	C.B. "L"	1/2 T *	15	12	III		15	H		
23	Drop MH		136	12	III		136	A	12" Cushion	
24	C.B. "L"	1/2 T *	15	12	III		15	H		
25	Drop MH		305	15	III		305	A	18" Cushion	
26	C.B. "B"	T	33	12	III		33	H		
27	Drop MH		24	18	IV	18	24	A	12" Cushion	
28	C.B. "L"	1/2 T *	15	12	III		15	H		
29	M.H. Sid.		77	12	III		77	A		
30	C.B. "B"	T	33	12	III		33	H		
31	C.B. "B"	T	52	12	III		52	D		
31(A)	C.B. "A"		26	12	III		26	D		
32	C.B. "L"	1/2 T *	19	12	III		19	H		
33	M.H. Sid.		336	12	III		336	A		
Sta. 24+50 to D.S.#23			108	12	III		108			

\* The one-half trap shall be paid for as 12" sewer C-76 III in Lin. Ft. The one-half trap is detailed on the Special Details sheet in the contract drawings.

\*\* Pay Limits for sewers are inside faces of structures, unless otherwise noted.

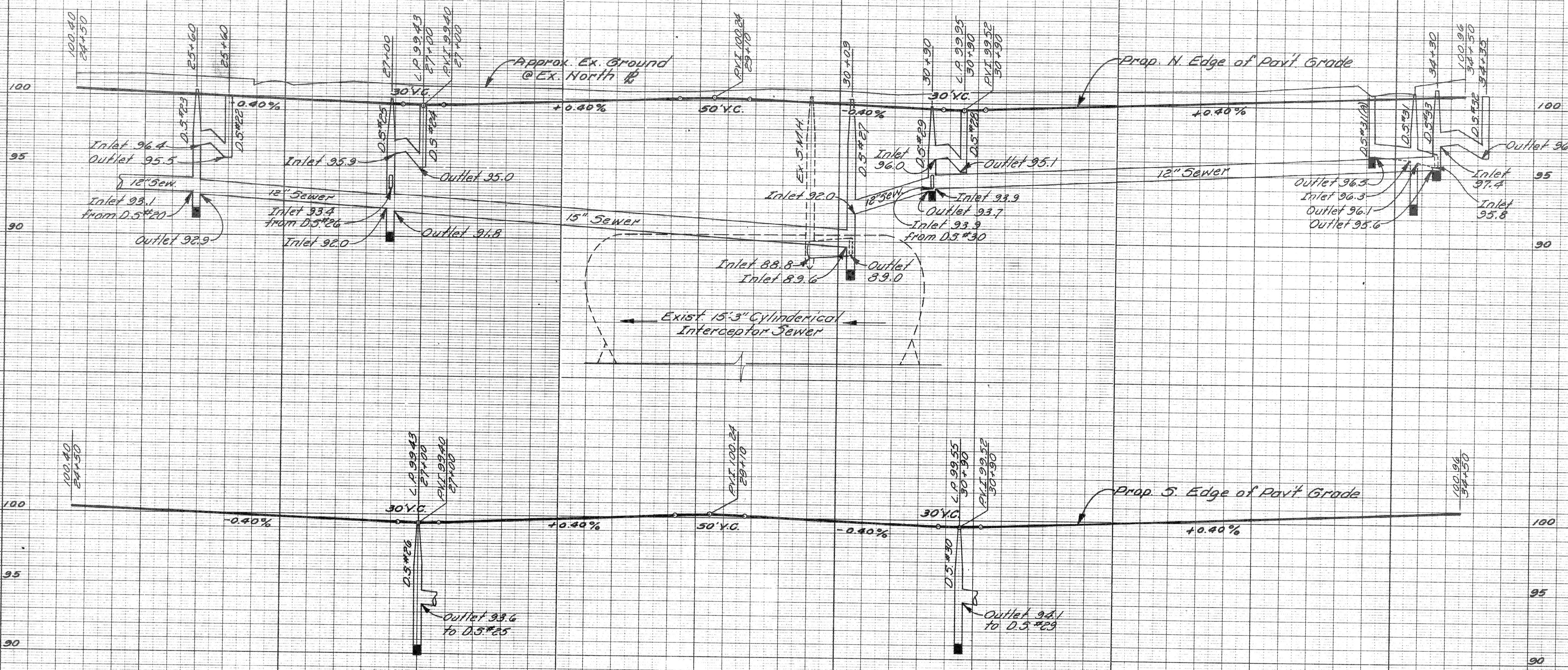
**NOTES**

- 1 For Alignment, See 5th.
- 2 For Utility Legend and Symbols See 5th.
- 3 Receiver ends shall be face of curb.
- 4 For construction sequence, See 5th.
- 5 All prop. driveway return are 10' unless otherwise noted.
- 6 Transition from curb and gutter to Conc. Curb Detail E-1 around street returns.
- 7 All prop. street return road are 20' of face of curb.
- 8 For Driveway Details, See 5th.

REFERENCE DRAWINGS DESIGNED BY DRAWN BY <i>Sucech</i> TRACED BY CHECKED BY		APPROVED ENGINEER OF STREETS HIGHWAY ENGINEER		CITY OF DETROIT CITY ENGINEERING DIVISION - EPMD BUREAUS OF STREETS AND HIGHWAYS			JEFFERSON AVE. RECONSTRUCTION ROSA PARKS BLVD TO EIGHTH ST.  PLAN STA. 24+50 TO STA. 34+50			SHEET 11 OF 12 SHEETS CONTRACT NO. ASSIGNMENT NO. DATE	
--	--	---	--	--	--	--	--	--	--	---	--

FINAL R.O.W.

24 25 26 27 28 29 30 31 32 33 34



**PROFILES**  
 Hor. 1"=40'  
 Vert. 1"=4'

24 25 26 27 28 29 30 31 32 33 34

APPROVED \_\_\_\_\_

DWN BY *TH*

CKD BY \_\_\_\_\_

CITY OF DETROIT  
 CITY ENGINEERING DEPARTMENT  
 BUREAU OF STREETS AND HIGHWAYS

JEFFERSON AVE. RECONSTRUCTION  
 ROSA PARKS BLVD. TO EIGHTH ST.

JEFFERSON AVE. PROFILES  
 STA. 24+50 TO STA. 34+50

SHEET 12 OF 12 SHEETS

CONTRACT NO. \_\_\_\_\_

DATE \_\_\_\_\_