

**MICHIGAN
STATE HIGHWAY DEPARTMENT
LANSING**

PLAN AND PROFILE OF PROPOSED

**GRAND RIVER ROAD
REDFORD-LIVONIA TWP'S
T.I.S. R.9.E & R10.E.**

INDEX OF SHEETS

Sec. A Sheet #1 Title sheet
 Sheet #2,3 Typical Cross-sections
 Sheets #4,7 Special Details
 Sheet #6,9 Plan & Profile
 Sheet #15 Quantity sheet

SEC. B - SURFACING

Sheet #1 Title sheet
 Sheet #4 Typical cross-section
 Sheet #5-7 Special Details
 Sheet #9-11 Plan & Profile
 Sheet #18 Quantity sheet.

Sec. B Sheet #1 Title Sheet
 Sheet #2 - Special Details
 Sheet #4 - Typical Cross-sections
 Sheets #5,7 Special Details
 Sheets #9,11 Plan & Profile
 Sheets #16,17 - Quantity sheets
 Sheet #19 Special Details
 Sheet #20 Mass Diagram

STANDARD PLANS

Sec. A E-7-C-12
 E-7-C-11C
 E-12-B-1

Sec. B E-7-C-12
 E-7-C-11D
 E-12-B-1
 E-7-C-13

Sec. C. E-7-C-12
 E-7-C-11E
 E-7-C-13

Sec. D. E-7-C-12
 E-7-C-11F
 E-7-C-13

INDEX OF SHEETS Sec. C

Sheet #1 Title Sheet
 Sheet #2 Special Details
 Sheet #4 Typical Cross Sections
 Sheets #6,7 Special Details
 Sheets #11,12 Plan & Profile
 Sheets #20 Mass Diagram
 Sheets #21,22 Quantity Sheets.

Index of Sheets Sec. D

Sheet #1 Title Sheet
 #2 Special Details
 #4 Typical Cross Sections
 #6,6,7 Special Details
 #13,14 Plan & Profile
 #20 Mass Diagram
 #23,24 Quantity Sheets.

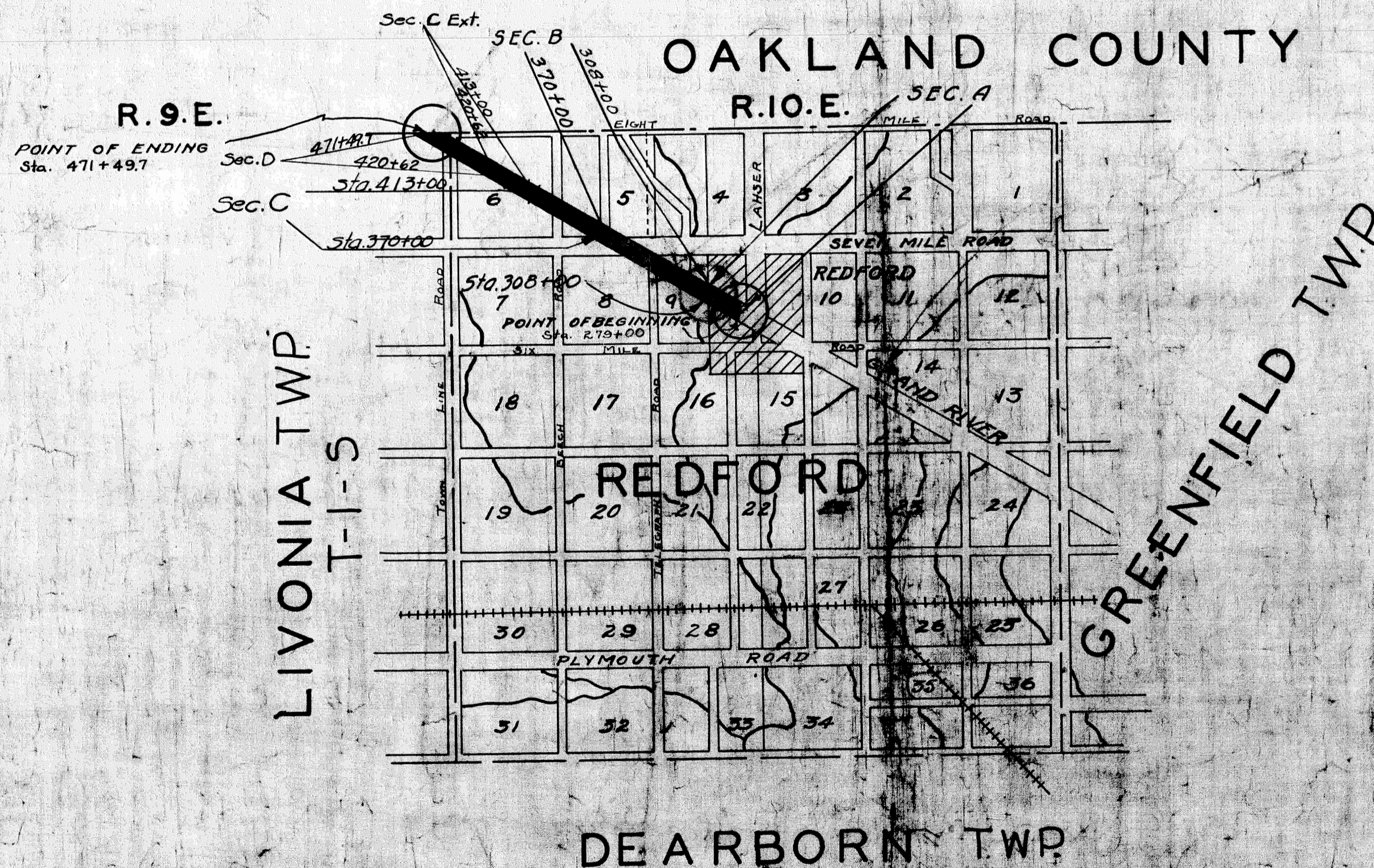
TRUNK LINE NO. 16.

Section 16-24 A Sta. 279 to Sta 308 .544
 Section 16-24 B Sta. 308 to Sta. 370+00 1.174
 Section 16-24 C Sta. 370 to Sta. 413+00 0.814
 Section 16-24 D Sta. 420+62 to 471+49.7 0.944

Sec. A
 This work to be done in accordance with Michigan State Highway Specifications of March, 1924.

Sec. B
 This work to be done in accordance with the Michigan State Highway Department's Specifications of 1926

Sec. C & D.
 The improvement covered by these plans shall be done in accordance with the Michigan State Highway Department 1926 Standard road and Bridge Specifications.



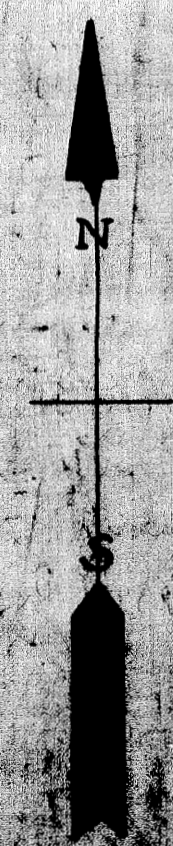
GRAND RIVER
5 POINTS-TELEGRAPH

CONVENTIONAL SIGNS

- COUNTY LINE _____
- CITY OR VILLAGE _____
- TOWNSHIP LINE _____
- SECTION LINE _____
- FENCE LINE _____
- RAILROADS _____
- Electric _____
- Steam _____
- SURVEY LINE _____
- CULVERT _____
- POLE _____
- GROUND ELEV. _____
- GRADE ELEV. _____

**GRAND RIVER
TELEGRAPH-5PTS.**

CHECKED BY *R. P. Nelson*
 Chief Draftsman



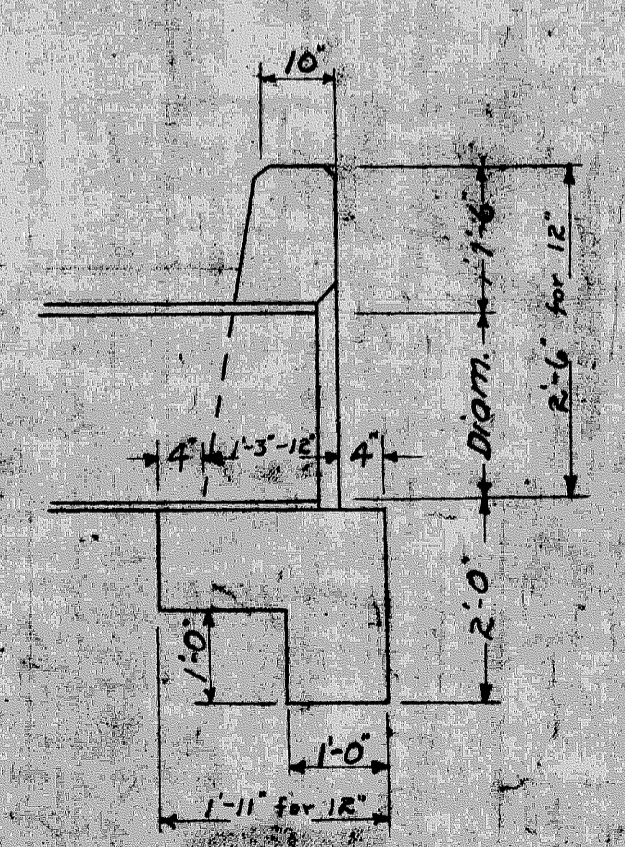
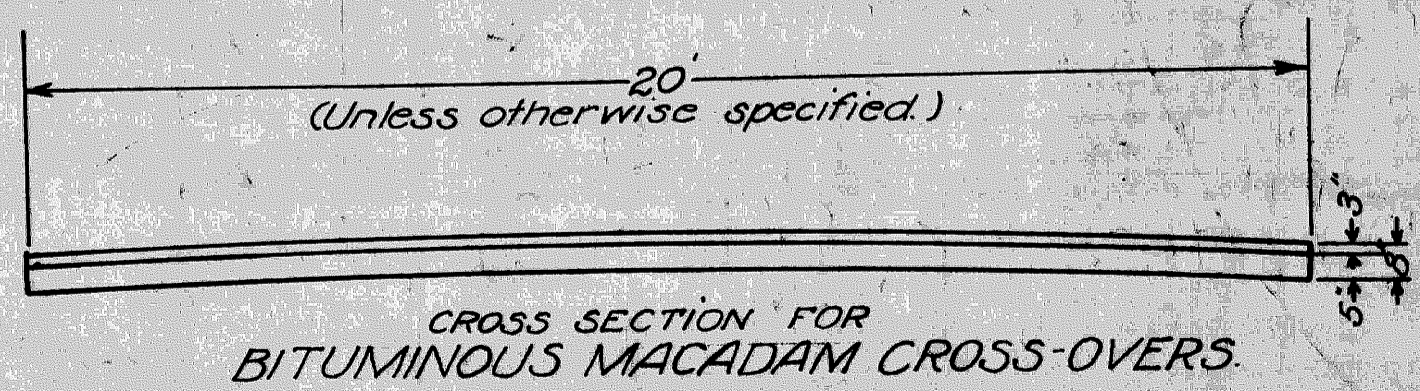
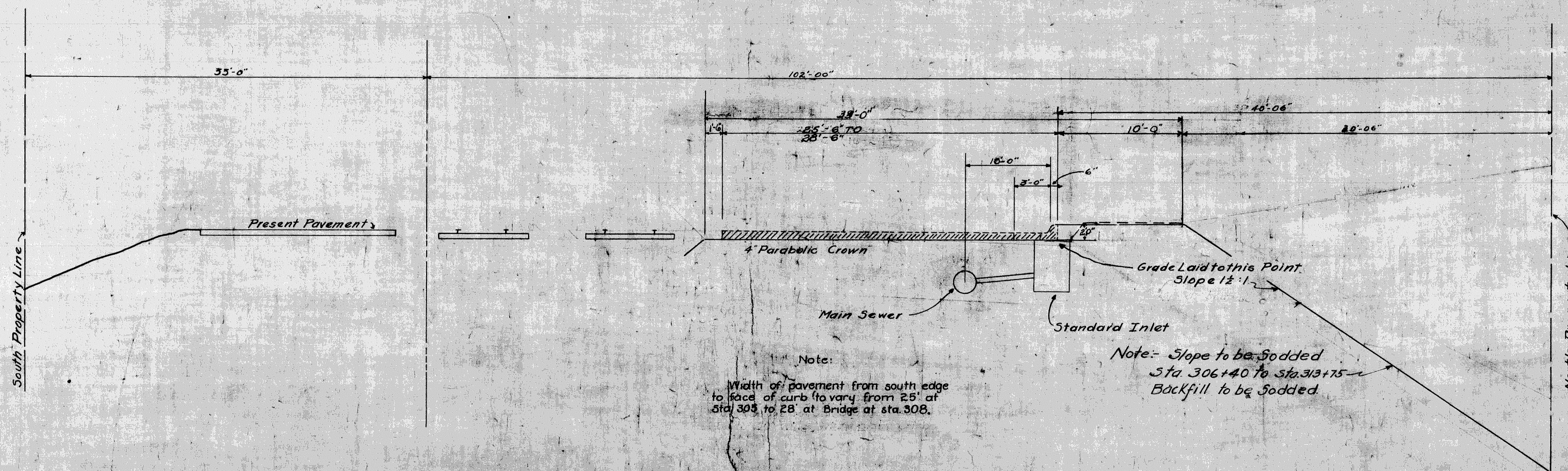
COUNTY	TRUNK LINE	SECTION	YEAR	SHEET NO.	TOTAL SHEETS
WAYNE	16-24	A	1925	3	20

082-0

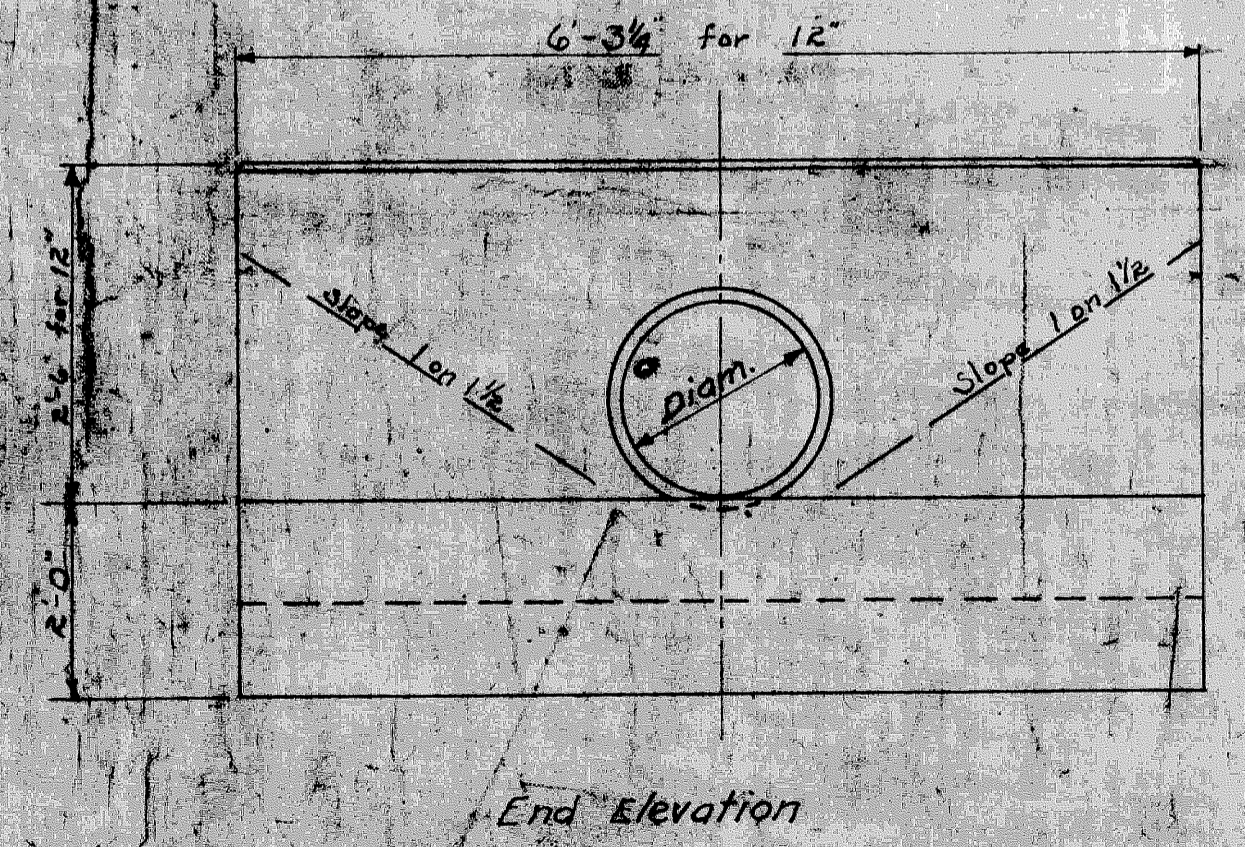
TYPICAL CROSS-SECTION

GRAND RIVER ROAD CONSTRUCTION

FROM STA. 305+00 TO STA. 308+00



Detail of Headwalls at Sta. 305+00 and 308+80.
1.3 cu. yds. Req. for 12" Tile.
One Headwall required on each side of River Rouge.

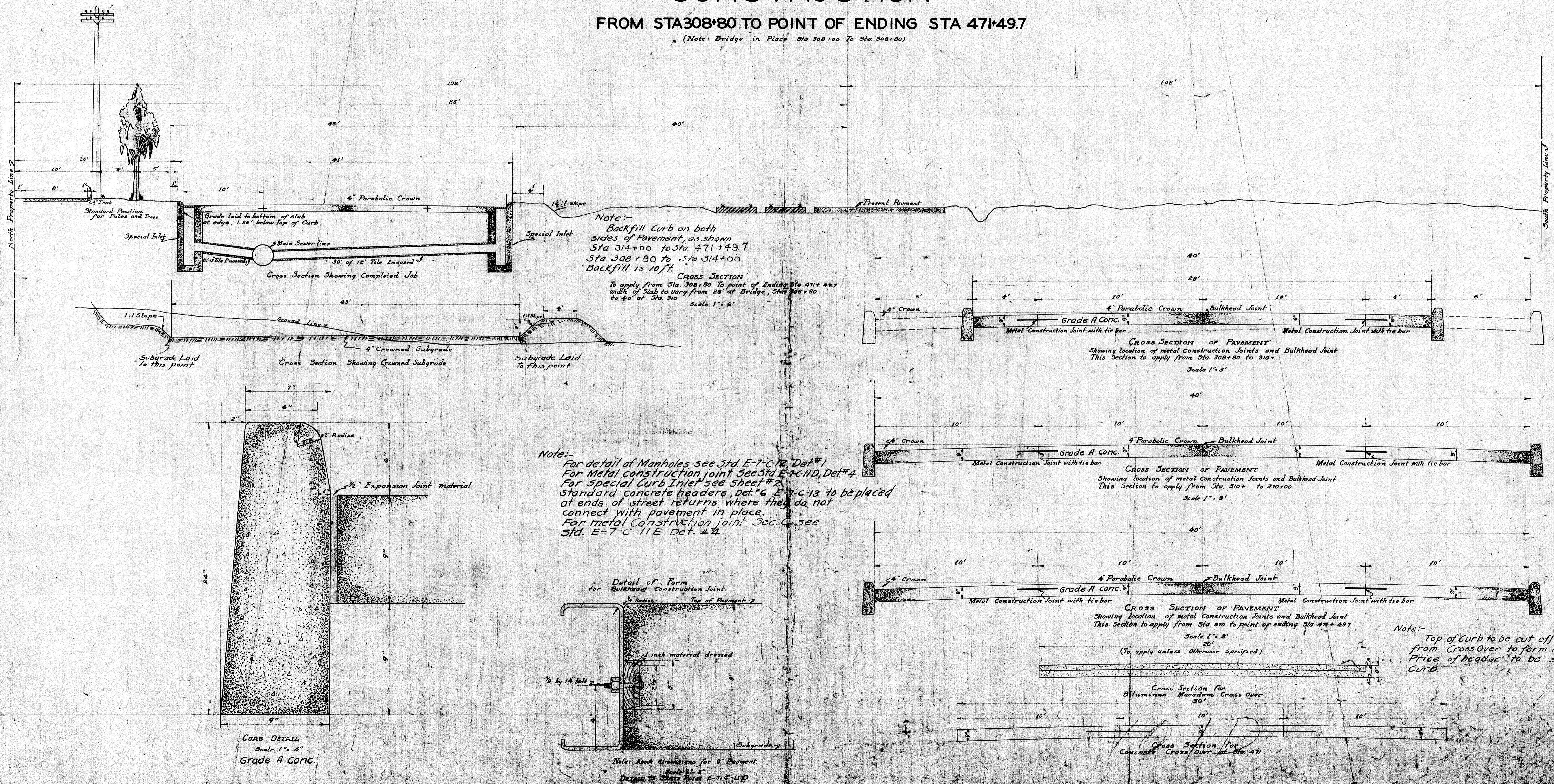


111 082-60

TYPICAL CROSS-SECTION GRAND RIVER CONSTRUCTION

FROM STA 308+80 TO POINT OF ENDING STA 471+49.7

(Note: Bridge in Place Sta 308+00 To Sta 308+80)



COUNTY	TRUNK LINE	SECTION	YEAR	SHEET NO.	TOTAL SHEETS
WAYNE	16-24	B	1925	10	20

M082-6

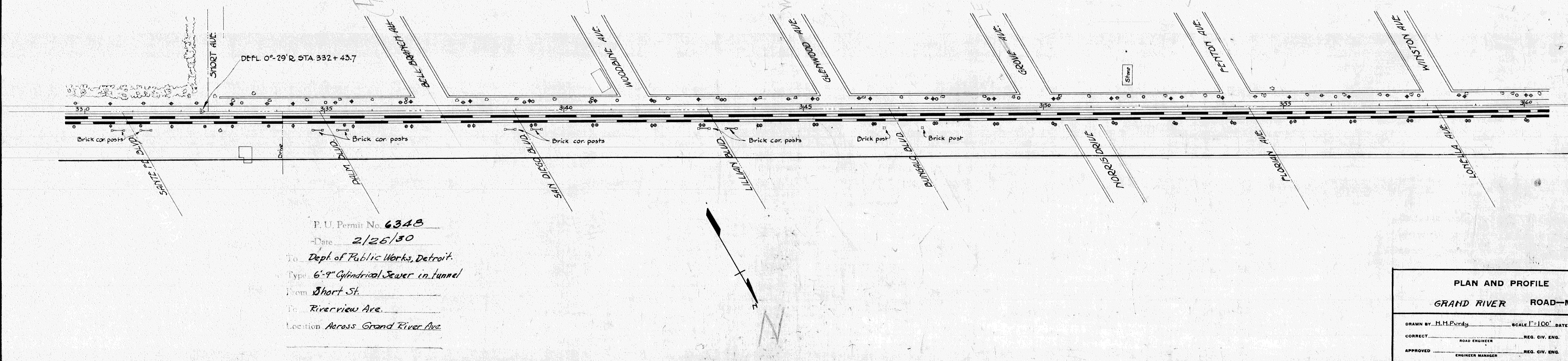
B.M. #33 Elev 631.14
Top of Fire Hydrant
110'L Sta. 338+00

B.M. #34 Elev 630.47
Top of Fire Hydrant
155'R Sta. 347+75

B.M. #35 Elev 630.55
Nail in 30" Elm
33'L Sta. 355+20

PLAN	DATE
SURVEYED BY J.L.W. J.W. P.D.W. H.H.P. P.C.S.	8-21-33
PLOTTED BY H.H.P. P.C.S.	2-4-32
NOTE BOOK NO. T. 302	2-4-32
ALIGNMENT CHECKED BY H.H.P. P.C.S.	
NO. T. 302	

PROFILE	DATE
SURVEYED BY J.L.W. J.W. P.D.W. H.H.P. P.C.S.	8-21-33
PLOTTED BY H.H.P. P.C.S.	2-4-32
NOTE BOOK NO. T. 302	2-4-32
GRADES CHECKED BY H.H.P. P.C.S.	
NO. T. 302	



P.U. Permit No. 6348
Date 2/26/30
To Dept. of Public Works, Detroit.
Type 6"-9" Cylindrical Sewer in tunnel
From Short St.
To Riverview Ave.
Location Across Grand River Ave.

PLAN AND PROFILE
GRAND RIVER ROAD—MILE:

DRAWN BY H.H.P. P.C.S. SCALE 1"=100' DATE Sept. 26, 23

CORRECT BY ROAD ENGINEER REG. CIV. ENG. CHECKED BY FILE NO.

APPROVED BY ENGINEER MANAGER REG. CIV. ENG.

