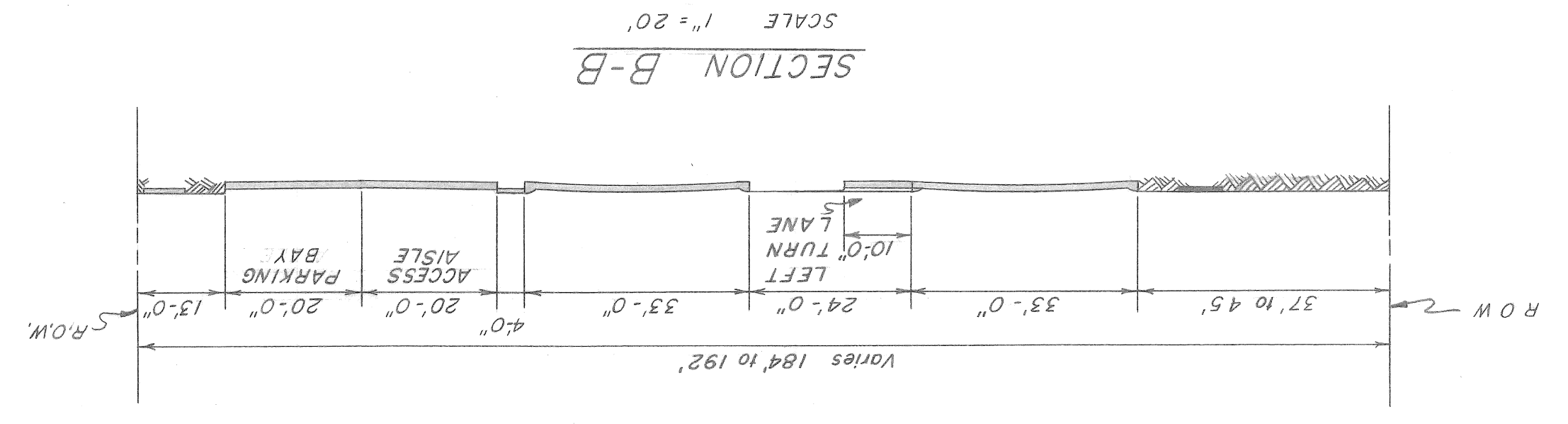
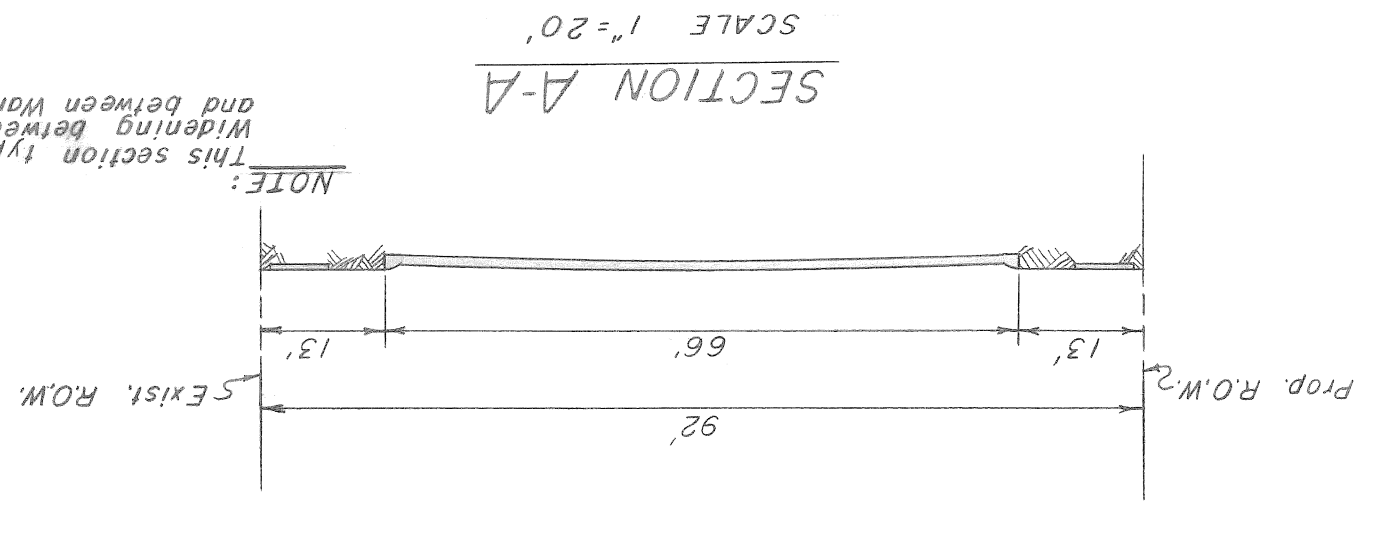
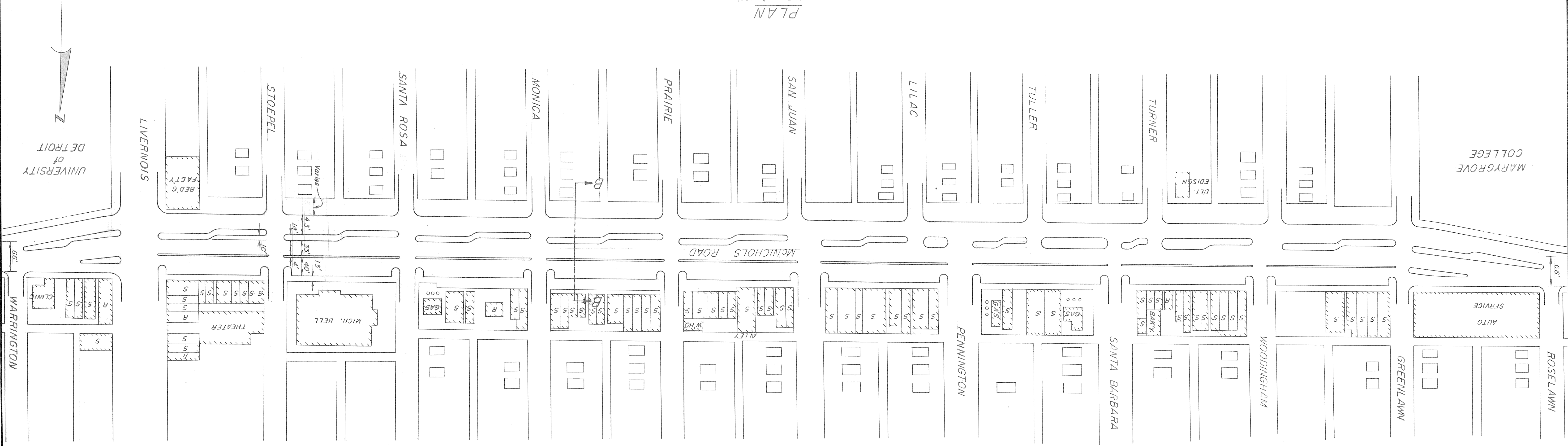


SHEET 3 OF 3 SHEETS JOB No. H 8 S 3 DRWG No. C-3 DATE 11-20-56	PROPOSED McNICHOLS ROAD WIDENING ROSELAWN TO WARRINGTON	CITY OF DETROIT DEPARTMENT OF PUBLIC WORKS HIGHWAY & EXPRESSWAY DIVISION HIGHWAYS AND STREETS	HIGHWAY & EXPRESSWAY ENGINEER APPROVED:	DESIGNED BY D. MILZ J. KNOX	CHECKED BY TRACED BY DRAWN BY	DESCRIPTION IONS LOCATED BY COORDINATES ON SHEET
---	--	--	--	-----------------------------------	-------------------------------------	---



PLAN
SCALE 1" = 100'



NOTE: See sheets C1 & C2 for balance of widening plan

REVISIONS LOCATED BY COORDINATES ON SHEET	CHECKED BY A. Proger	HIGHWAY & EXPRESSWAY ENGINEER
DESCRIPTION	TRACED BY J. KNOX	
DATE	DRAWN BY J. KNOX	
	DESIGNED BY	APPROVED:
	REFERENCES	

PROPOSED McNICHOLS ROAD WIDENING
WYOMING TO HAMILTON

CITY OF DETROIT
DEPARTMENT OF PUBLIC WORKS
HIGHWAY & EXPRESSWAY DIVISION
HIGHWAYS AND STREETS

LAYOUT NO. IV
WYOMING TO LIVERNOIS

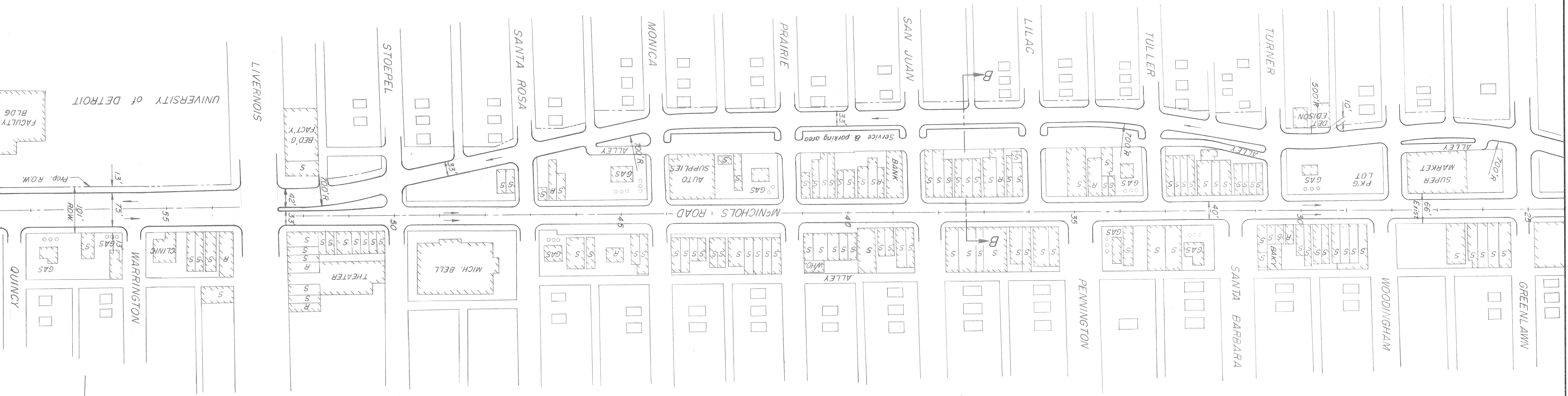
SHEET **OF** SHEETS

JOB No. HAS - 3

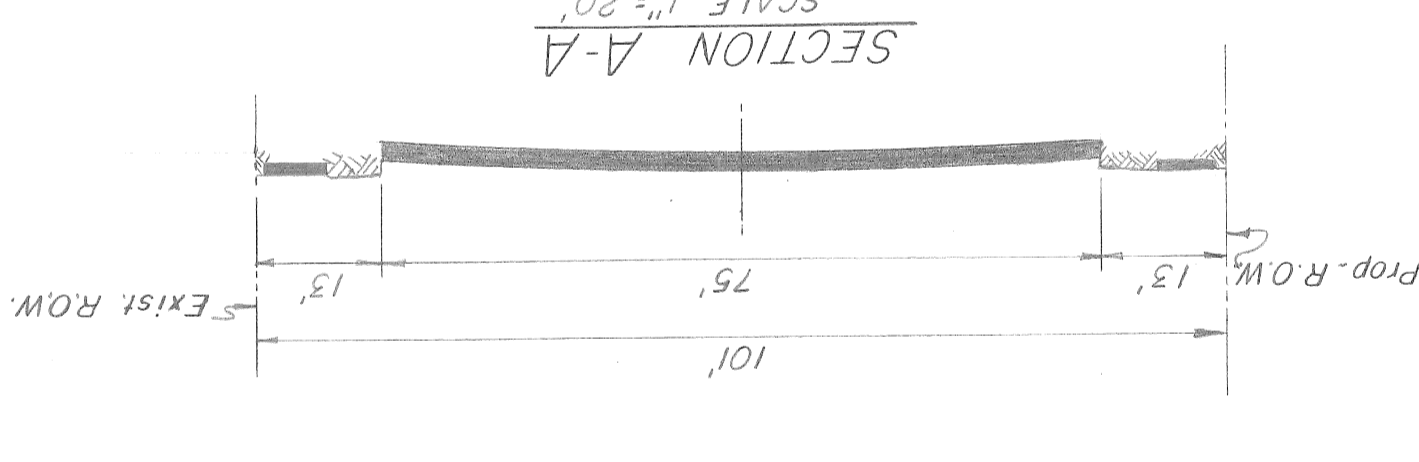
DRWG No. C-4

DATE 12-17-56

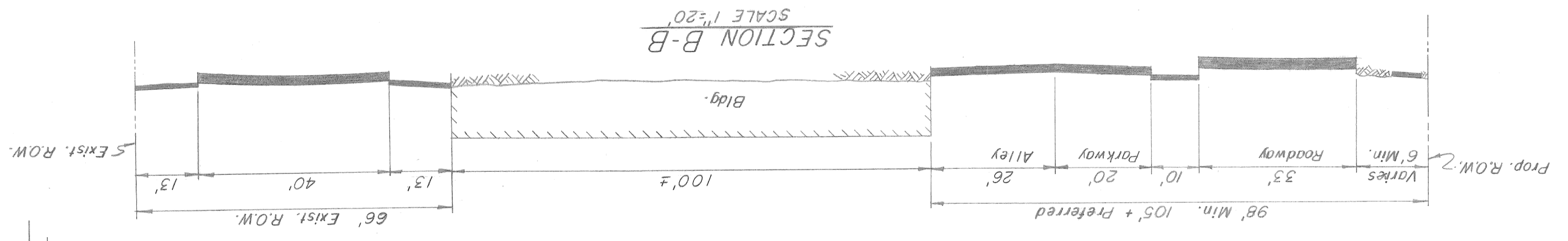
PLAN
GREENLAWN TO LIVERNOIS
SCALE 1"=100



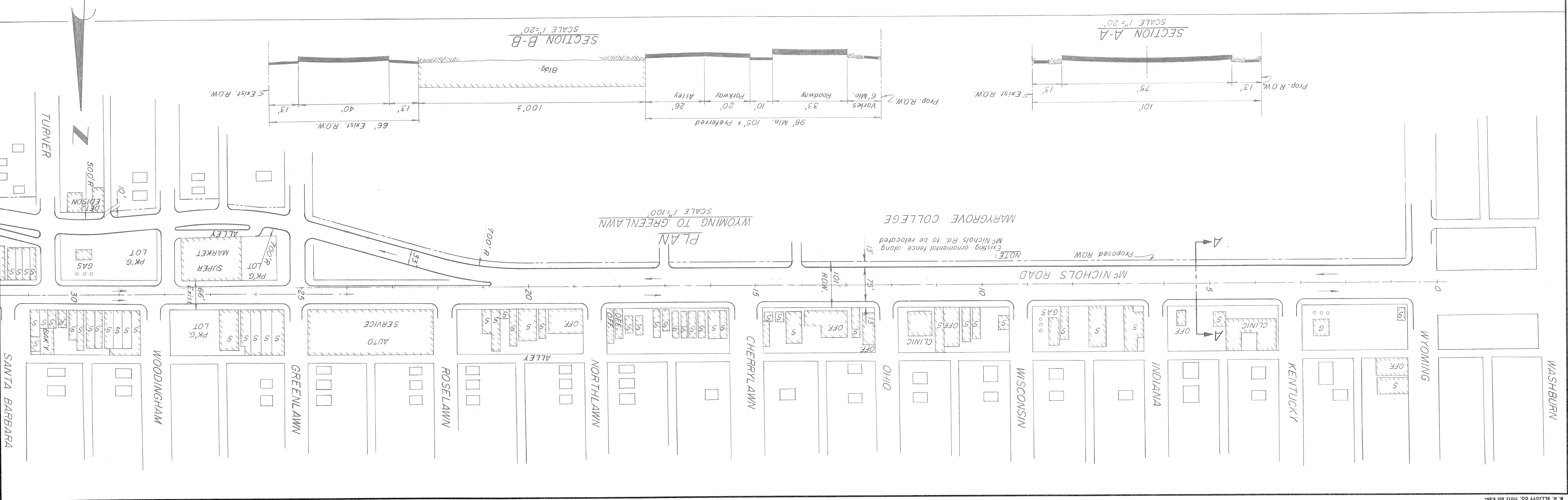
SECTION A-A
SCALE 1"=20



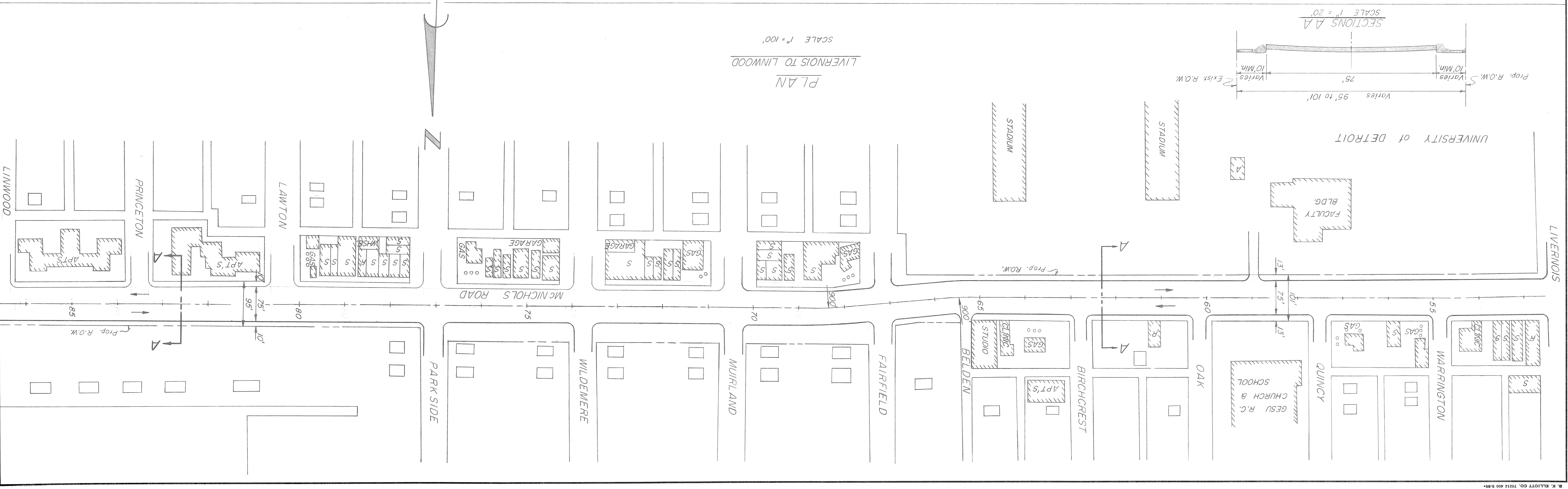
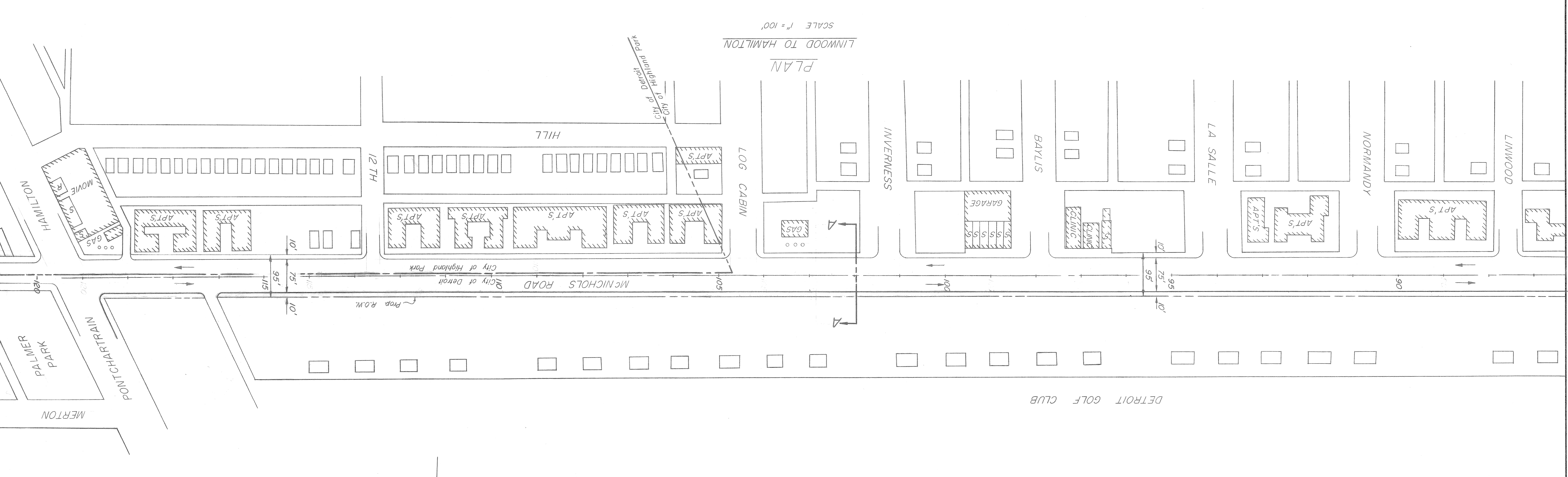
SECTION B-B
SCALE 1"=20



PLAN
WYOMING TO GREENLAWN
SCALE 1"=100



REVISIONS LOCATED BY COORDINATES ON SHEET		HIGHWAY & EXPRESSWAY ENGINEER	
COORD.	DESCRIPTION	CHECKED BY	A. Prager
		TRACED BY	H. C. KOWALSKI
		DRAWN BY	J. KNOX
REFERENCE	DRAWINGS	DESIGNED BY	
		APPROVED:	



REVISIONS LOCATED BY COORDINATES ON SHEET	DESIGNED BY	APPROVED:	HIGHWAY & EXPRESSWAY ENGINEER
DESCRIPTION	DRAWN BY		
DATE	TRACED BY		
	U. KNOX		
	G.D. MILZ		
	A. PAGER		
COORDINATES	CHECKED BY		

CITY OF DETROIT
 DEPARTMENT OF PUBLIC WORKS
 HIGHWAY & EXPRESSWAY DIVISION
 HIGHWAYS AND STREETS

LAYOUT NO. **WY**
 WYOMING TO LIVERNOIS

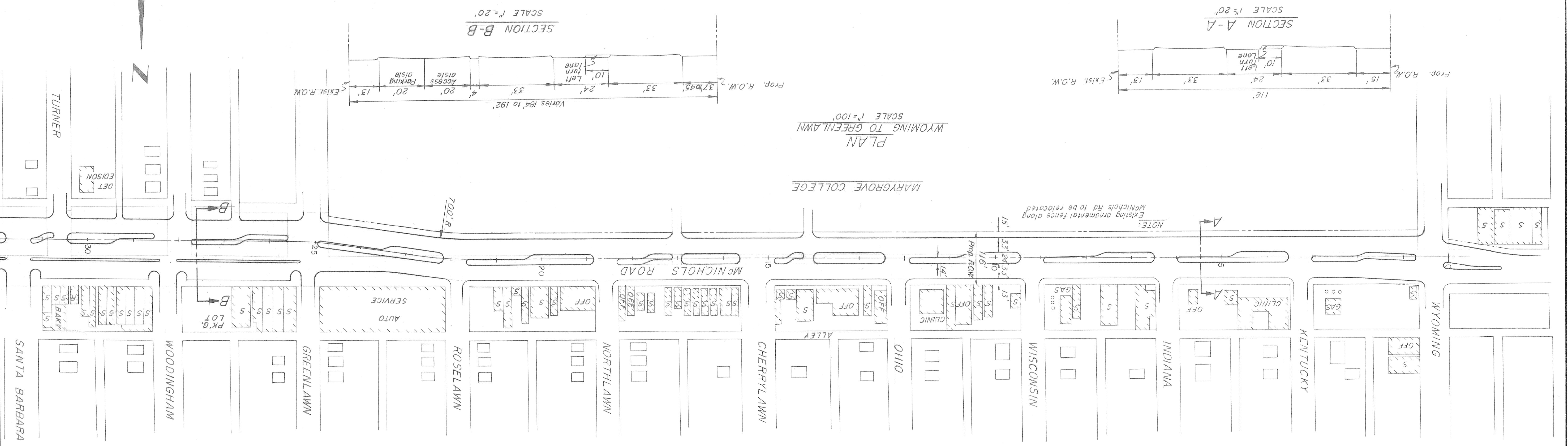
PROPOSED McNICHOLS ROAD WIDENING
 WYOMING TO HAMILTON

SHEET **OF** SHEETS
 JOB No. H.B.S-3
 DRWG No. C-6
 DATE 12-27-56

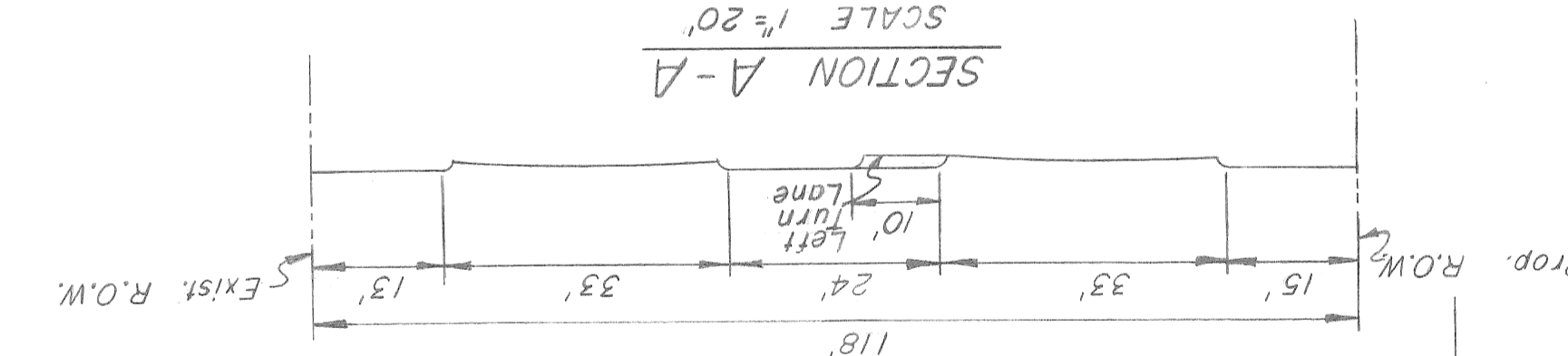
PLAN
 GREENLAWN TO LIVERNOIS
 SCALE 1"=100'



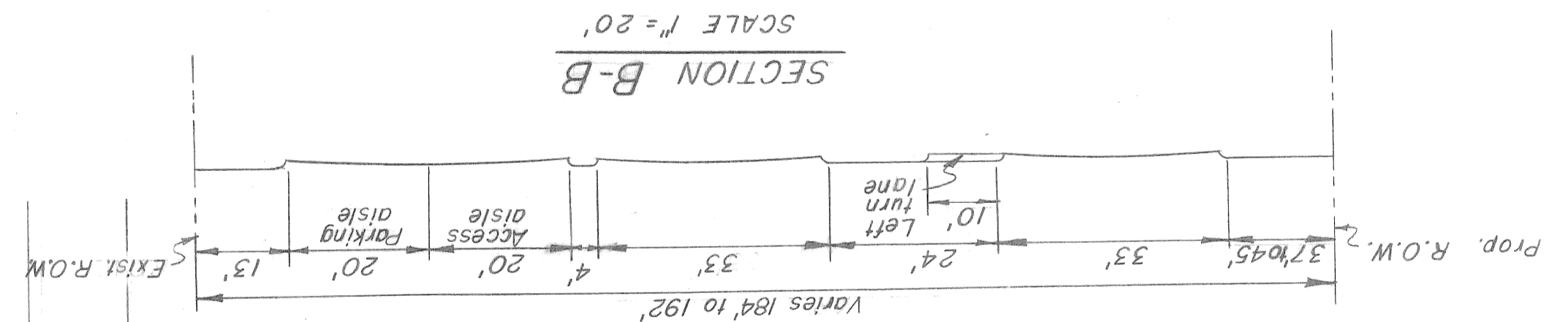
PLAN
 WYOMING TO GREENLAWN
 SCALE 1"=100'



SECTION A-A
 SCALE 1"=20'

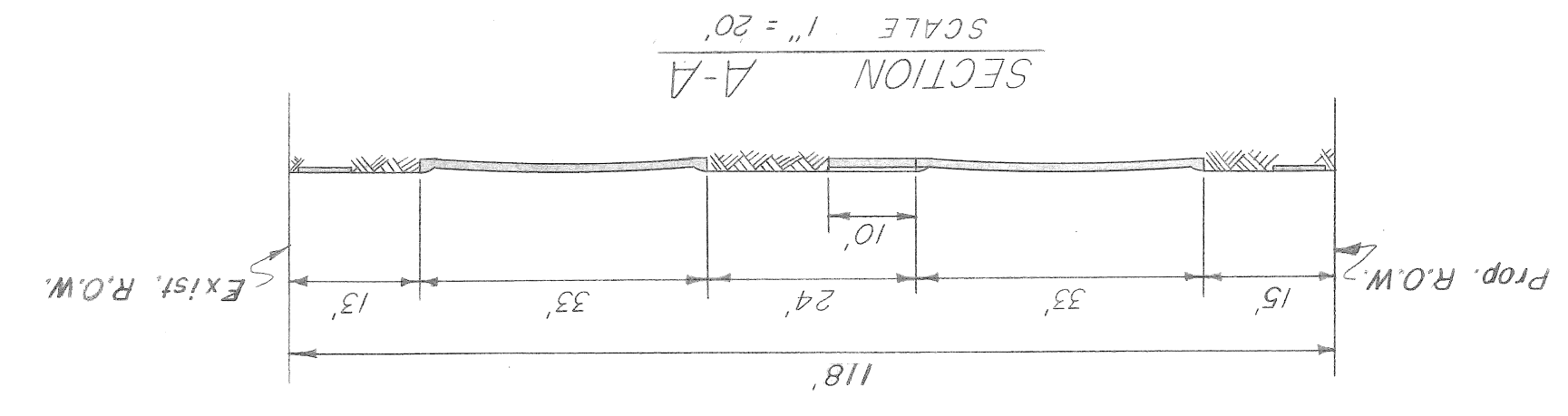
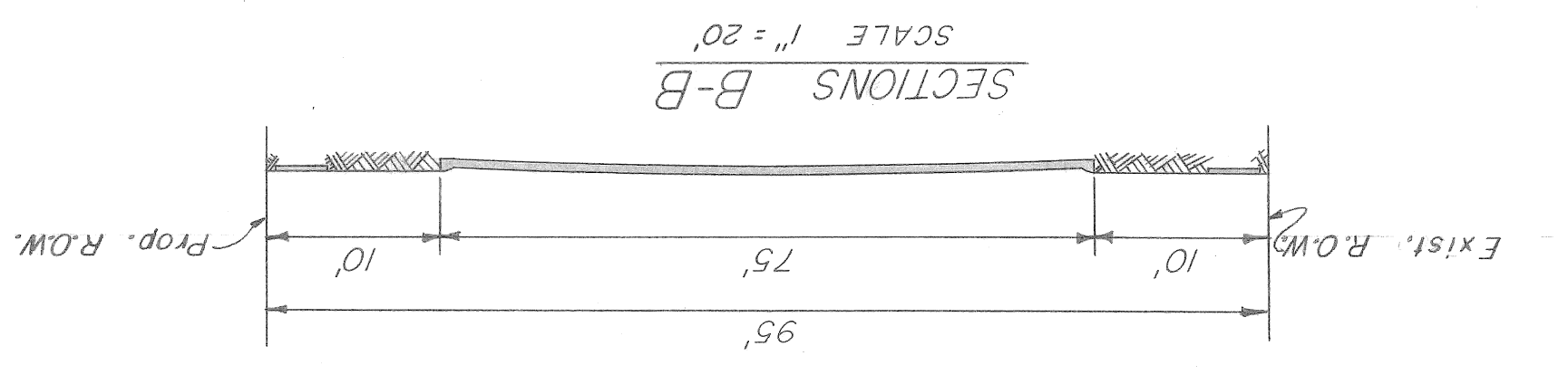
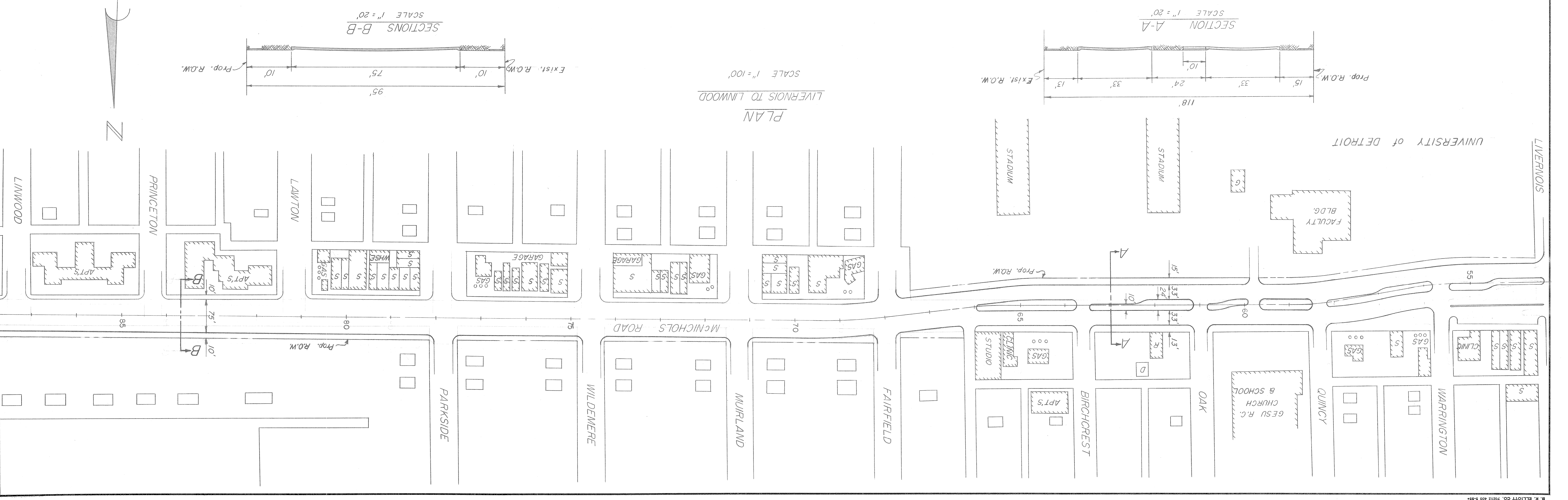
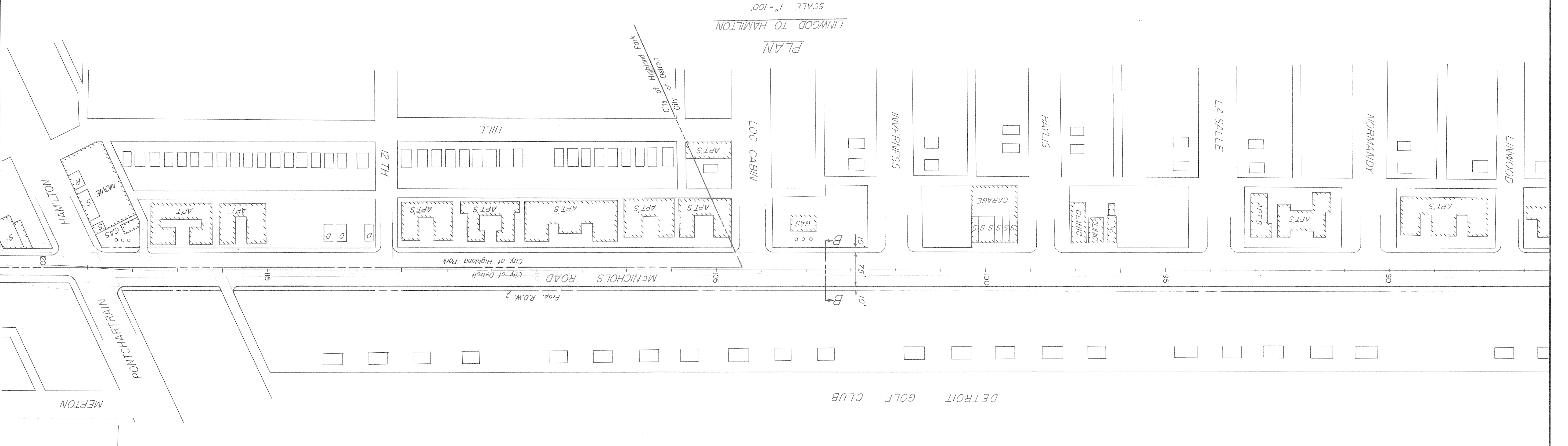


SECTION B-B
 SCALE 1"=20'



NOTE:
 Existing ornamental fence along
 McNichols Rd to be relocated

COORD. REGIONS LOCATED BY COORDINATES ON SHEET DESCRIPTION DATE APPROVED BY DRAWINGS	CHECKED BY A. PRAGER	HIGHWAY & EXPRESSWAY ENGINEER
CITY OF DETROIT DEPARTMENT OF PUBLIC WORKS HIGHWAY & EXPRESSWAY DIVISION HIGHWAYS AND STREETS	DRAWN BY G.D. MILZ	APPROVED
LAYOUT NO. V LIVERNOIS TO HAMILTON	JOB NO. HBS-3 SHEETS OF SHEETS	PROPOSED M NICHOLS ROAD WIDENING WYOMING TO HAMILTON
DATE 12-27-56 DRWG NO. C-7		



REVISIONS LOCATED BY COORDINATES ON SHEET	NO.	DATE	DESCRIPTION

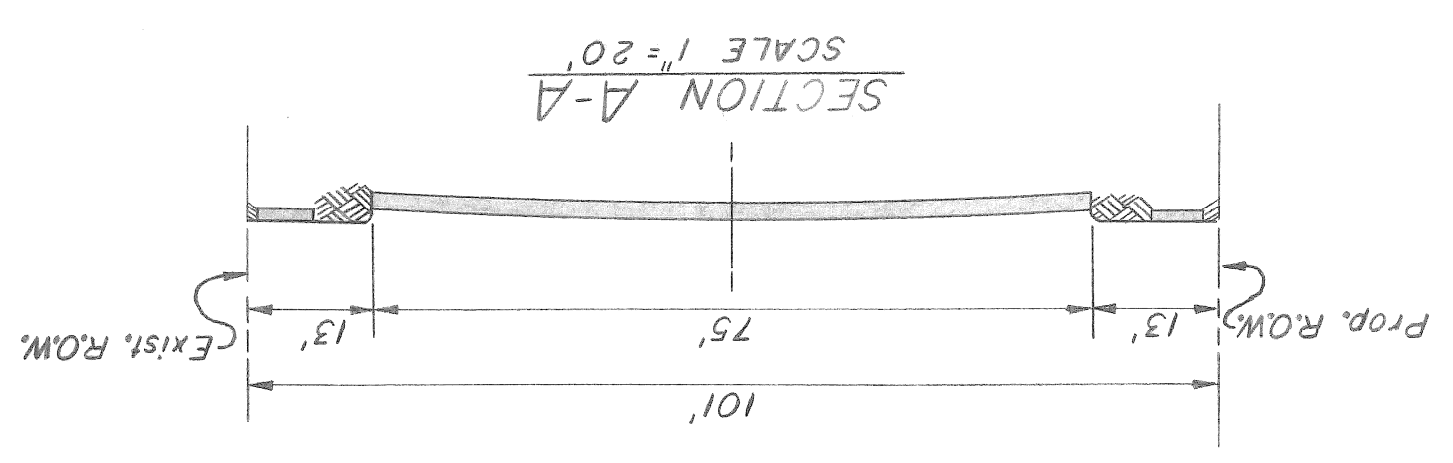
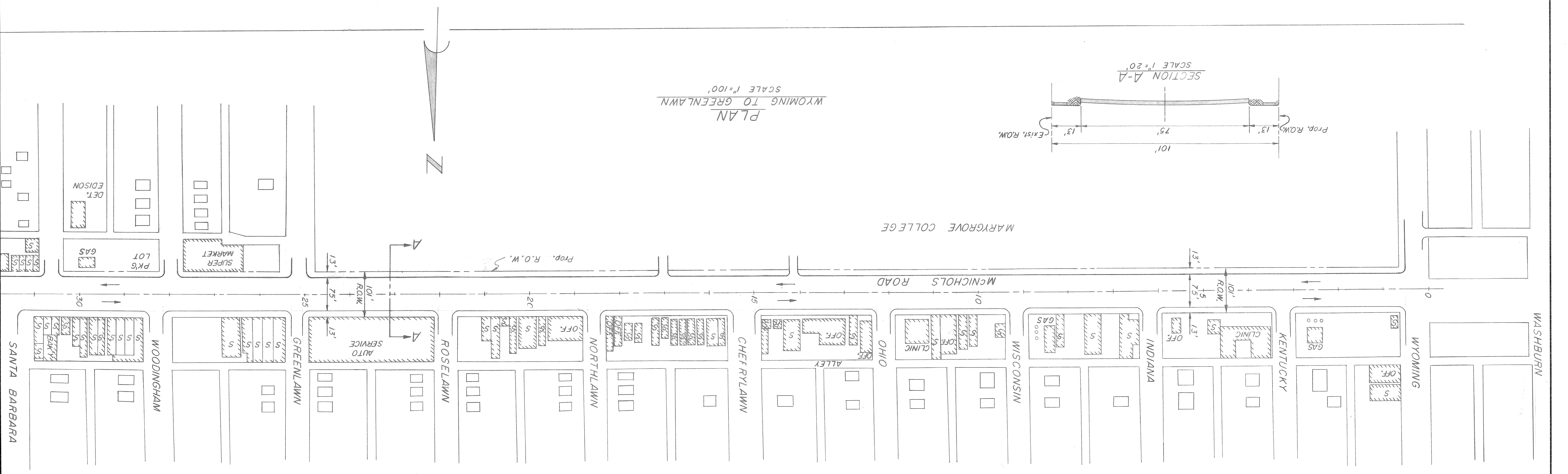
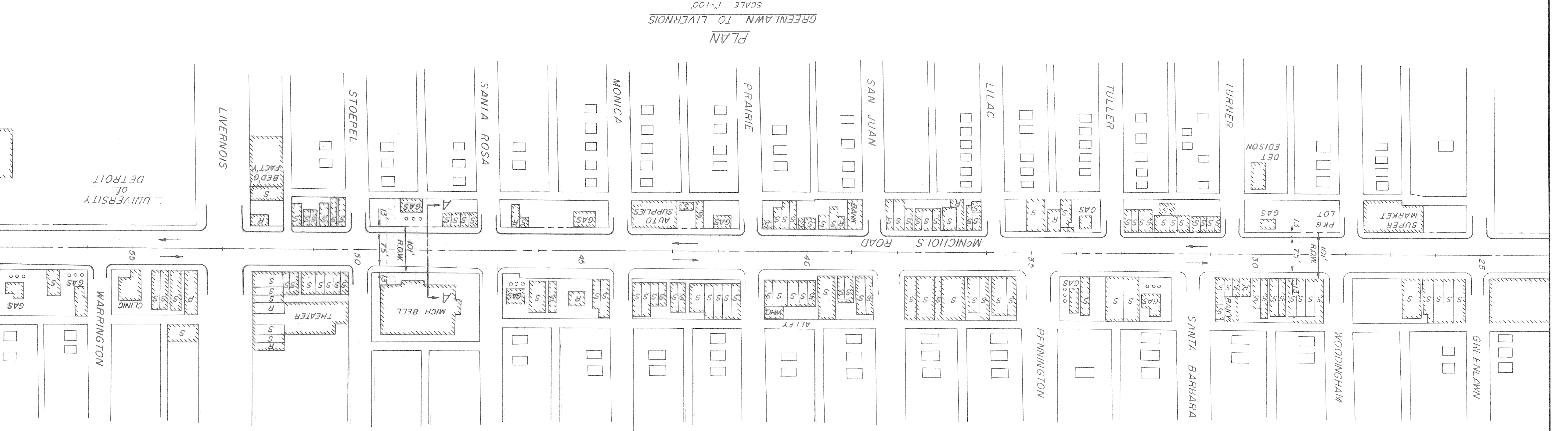
DESIGNED BY	J. KNOX
TRACED BY	H.C. KOMALSKI
CHECKED BY	A. Proger

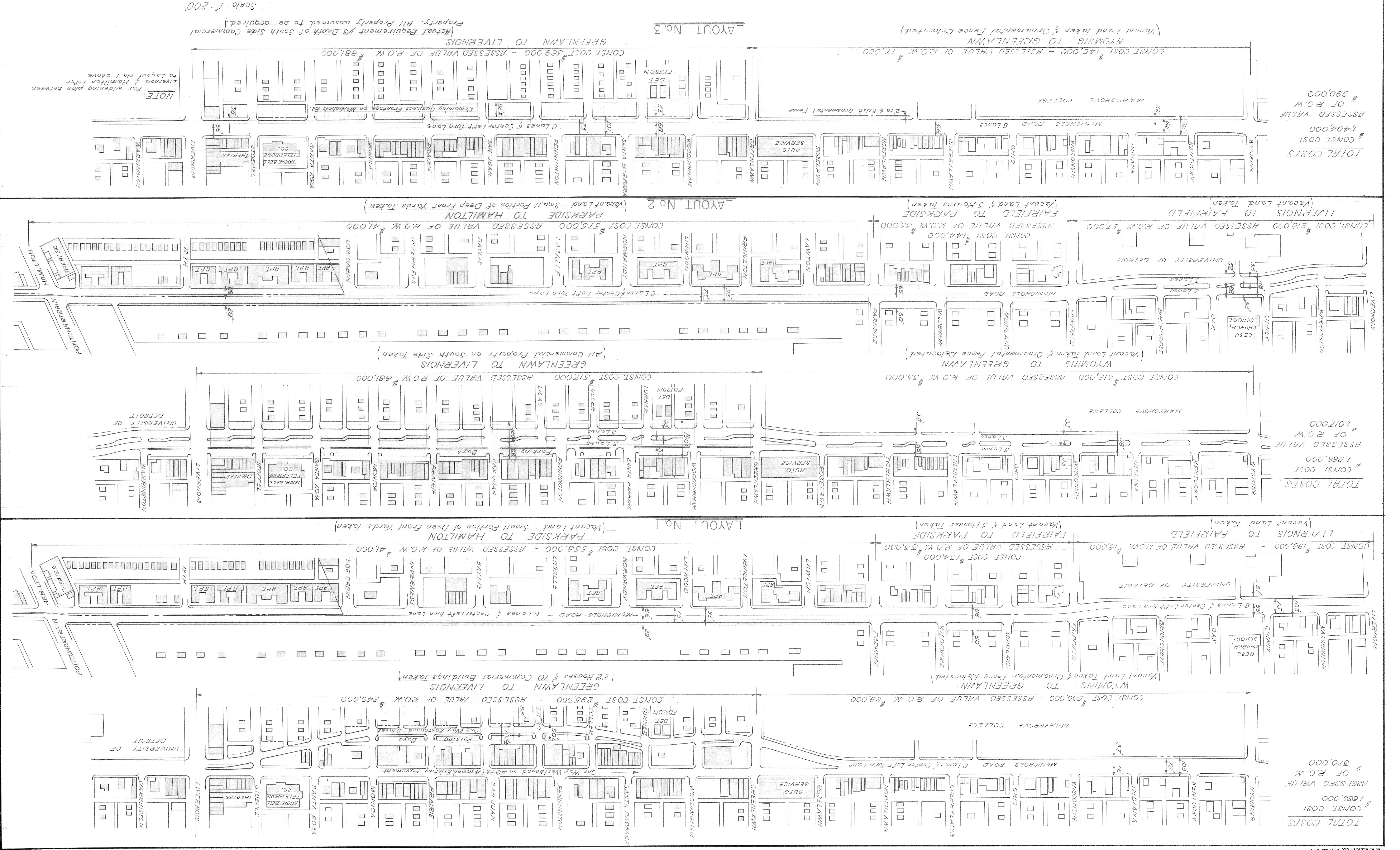
APPROVED: _____
 HIGHWAY & EXPRESSWAY ENGINEER

CITY OF DETROIT
 DEPARTMENT OF PUBLIC WORKS
 HIGHWAY & EXPRESSWAY DIVISION
 HIGHWAYS AND STREETS

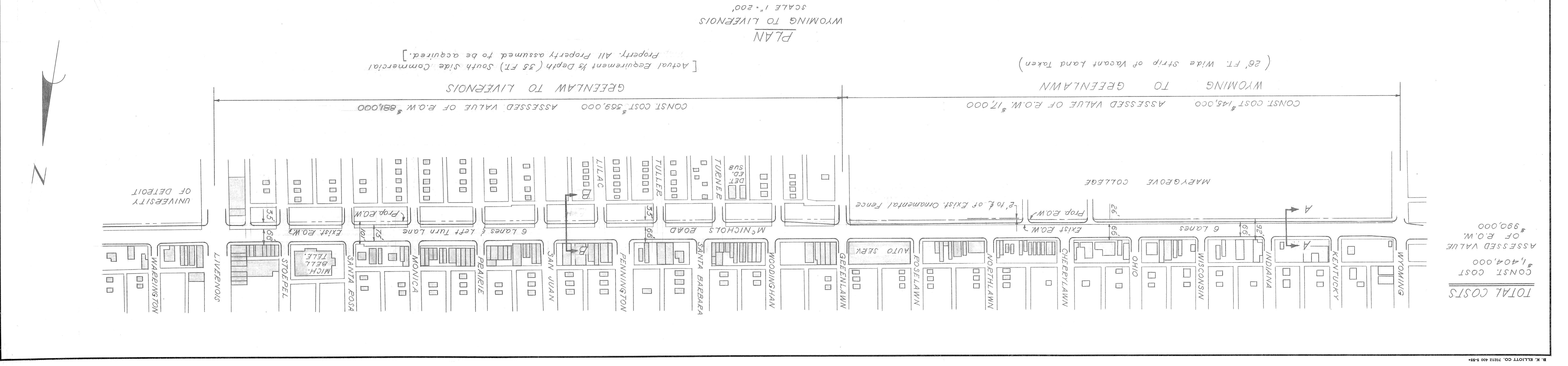
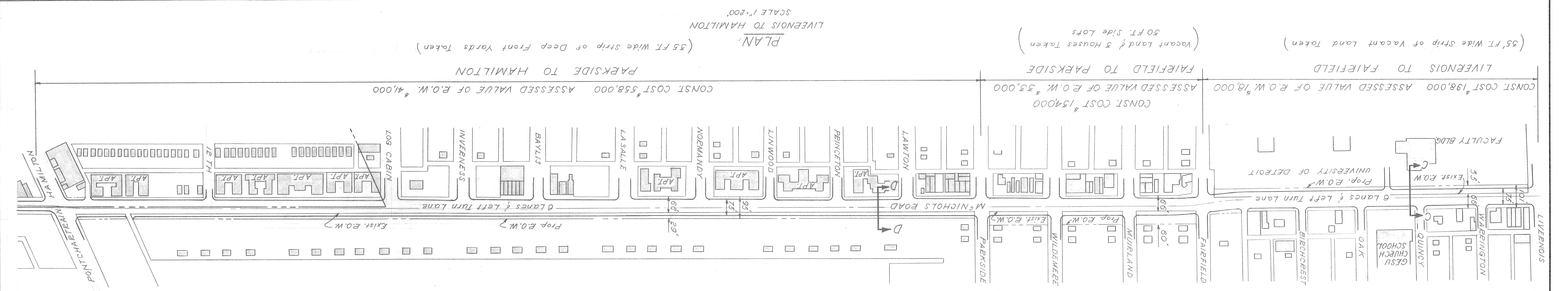
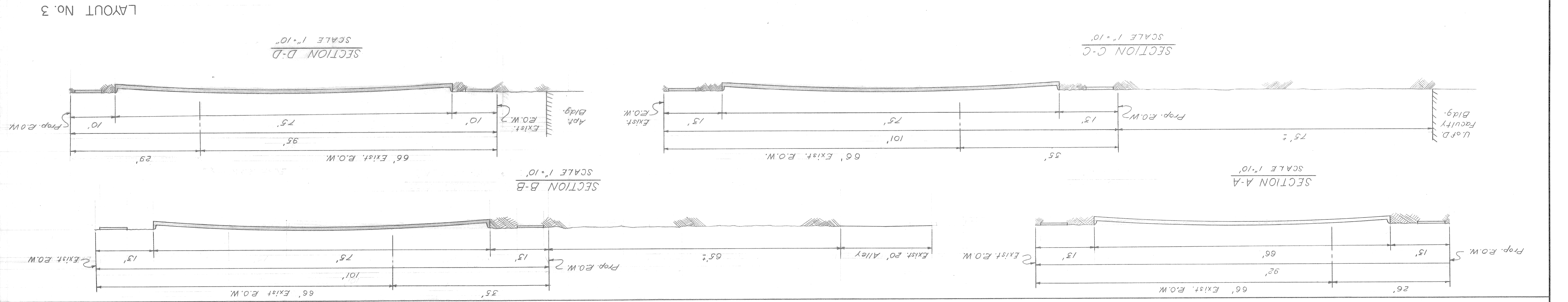
PROPOSED McNICHOLS ROAD WIDENING
 WYOMING TO HAMILTON

SHEET _____ OF _____ SHEETS
 JOB No. H.A.S.-3
 DRWG No. C-8
 DATE 12-26-56

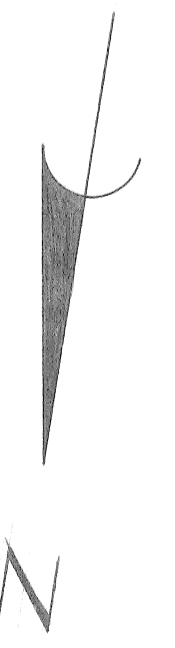




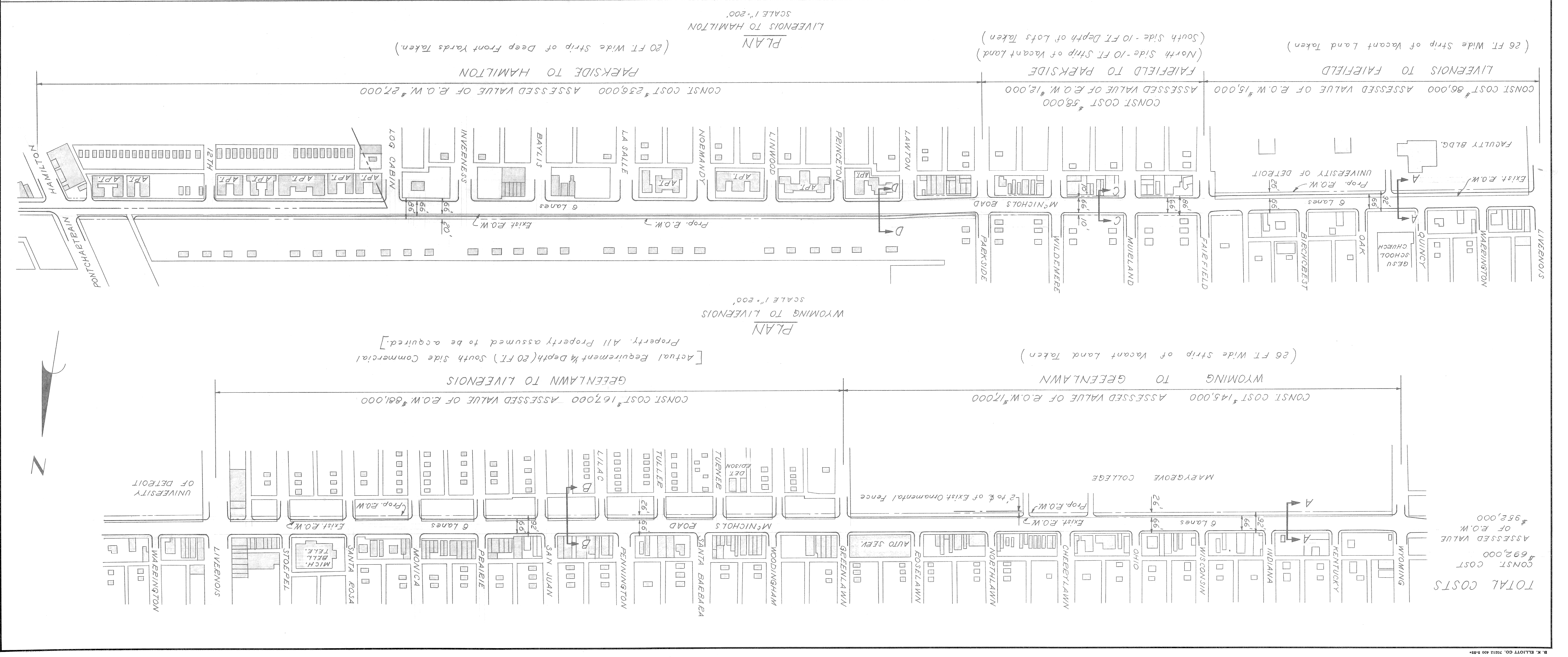
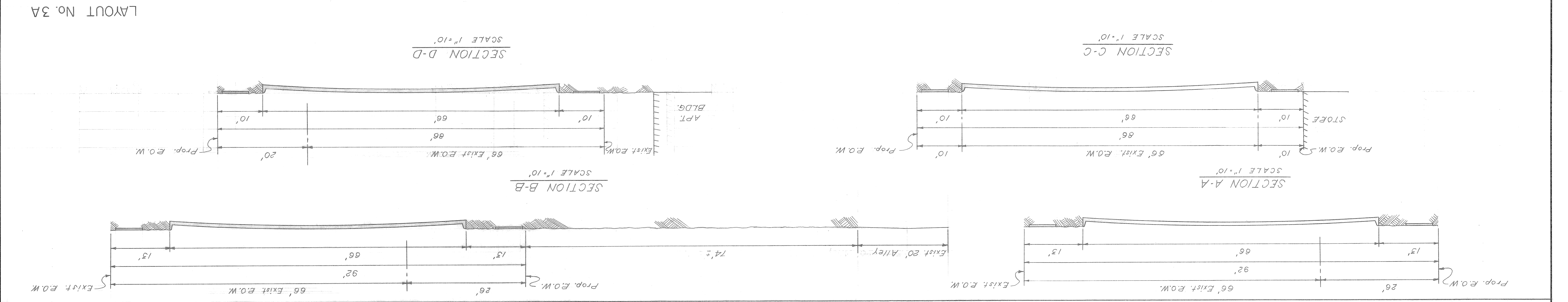
REVISIONS LOCATED BY COORDINATES ON SHEET	DESIGNED BY	APPROVED:	CITY OF DETROIT DEPARTMENT OF PUBLIC WORKS CITY ENGINEER'S OFFICE BUREAU OF HIGHWAYS AND EXPRESSWAYS	DATE	2-3-58
DESCRIPTION	DRAWN BY	HIGHWAY & EXPRESSWAY ENGINEER		JOB NO.	H.S.-3
NO.	DATE	BY	PROPOSED HIGHWAYS AND STREETS	DRWG NO.	C-10
			PROPOSED M'NICHOLS ROAD WIDENING	SHEET	OF SHEETS
			WYOMING TO HAMILTON		
			LEFT TURN LANE - GREENLAWN TO HAMILTON		



TOTAL COSTS
 CONST COST \$1,404,000
 ASSESSED VALUE \$990,000



CITY OF DETROIT DEPARTMENT OF PUBLIC WORKS CITY ENGINEERS' OFFICE BUREAU OF HIGHWAYS AND EXPRESSWAYS		HIGHWAY & EXPRESSWAY ENGINEER		CHECKED BY A. E. Prager		REVISIONS LOCATED BY COORDINATES ON SHEET	
HIGHWAYS AND STREETS PROPOSED McNICHOLS ROAD WIDENING WYOMING LANE TO HAMILTON SIX LANES TO UNDIVIDED		APPROVED:		DRAWN BY D. M. MEYERS		DESCRIPTION	
JOB No. H.B.S-3				TRACED BY		DATE	
SHEET OF SHEETS				DESIGNED BY		NO. DATE	
DATE 2-15-58						REVISED BY	



TOTAL COSTS
 CONST. COST \$62,000
 ASSESSED VALUE OF R.O.W. \$92,000
 \$92,000 + \$62,000 = \$154,000